

Data Path : Z:\pestpcbsrv\HPCHEM1\ECD_P\Data\PP031822\
 Data File : PP044853.D
 Signal(s) : Signal #1: ECD1A.ch Signal #2: ECD2B.ch
 Acq On : 17 Mar 2022 13:43
 Operator : YP\AJ
 Sample : PB143410BS
 Misc :
 ALS Vial : 9 Sample Multiplier: 1

Instrument :
 ECD_P
 ClientSampleId :
 PB143410BS

Integration File signal 1: autoint1.e
 Integration File signal 2: autoint2.e
 Quant Time: Mar 18 00:21:51 2022
 Quant Method : Z:\pestpcbsrv\HPCHEM1\ECD_P\methods\PP031722.M
 Quant Title : GC EXTRACTABLES
 QLast Update : Thu Mar 17 04:32:40 2022
 Response via : Initial Calibration
 Integrator: ChemStation

Volume Inj. : 2 µl
 Signal #1 Phase : ZB-MR1 Signal #2 Phase: ZB-MR2
 Signal #1 Info : 30Mx0.32mmx 0.50µ Signal #2 Info : 30M x 0.32mm x 0.25µm

Compound	RT#1	RT#2	Resp#1	Resp#2	ng/ml	ng/ml

System Monitoring Compounds						
1) SA Tetrachlo...	3.898	3.155	37759237	26363892	20.723	20.005
2) SA Decachlor...	10.021	8.514	27569423	30298477	21.417	23.318
Target Compounds						
3) L1 AR-1016-1	5.149	4.298	26721264	22939980	455.375	452.865
4) L1 AR-1016-2	5.172	4.317	39518875	31950605	442.067	443.215
5) L1 AR-1016-3	5.238	4.502	23515304	17656236	451.842	448.754
6) L1 AR-1016-4	5.344	4.551	19449873	14031064	454.543	445.664
7) L1 AR-1016-5	5.664	4.774	19214099	18112385	437.827	453.771
31) L7 AR-1260-1	6.893	5.883	33828257	34501219	491.363	489.998
32) L7 AR-1260-2	7.176	6.090	37577631	44353633	484.002	495.965
33) L7 AR-1260-3	7.570	6.252	25693142	39462318	408.306	463.340
34) L7 AR-1260-4	7.818	6.764	32021684	28716377	436.525	427.282
35) L7 AR-1260-5	8.160	7.032	57942746	66926560	413.778	428.311

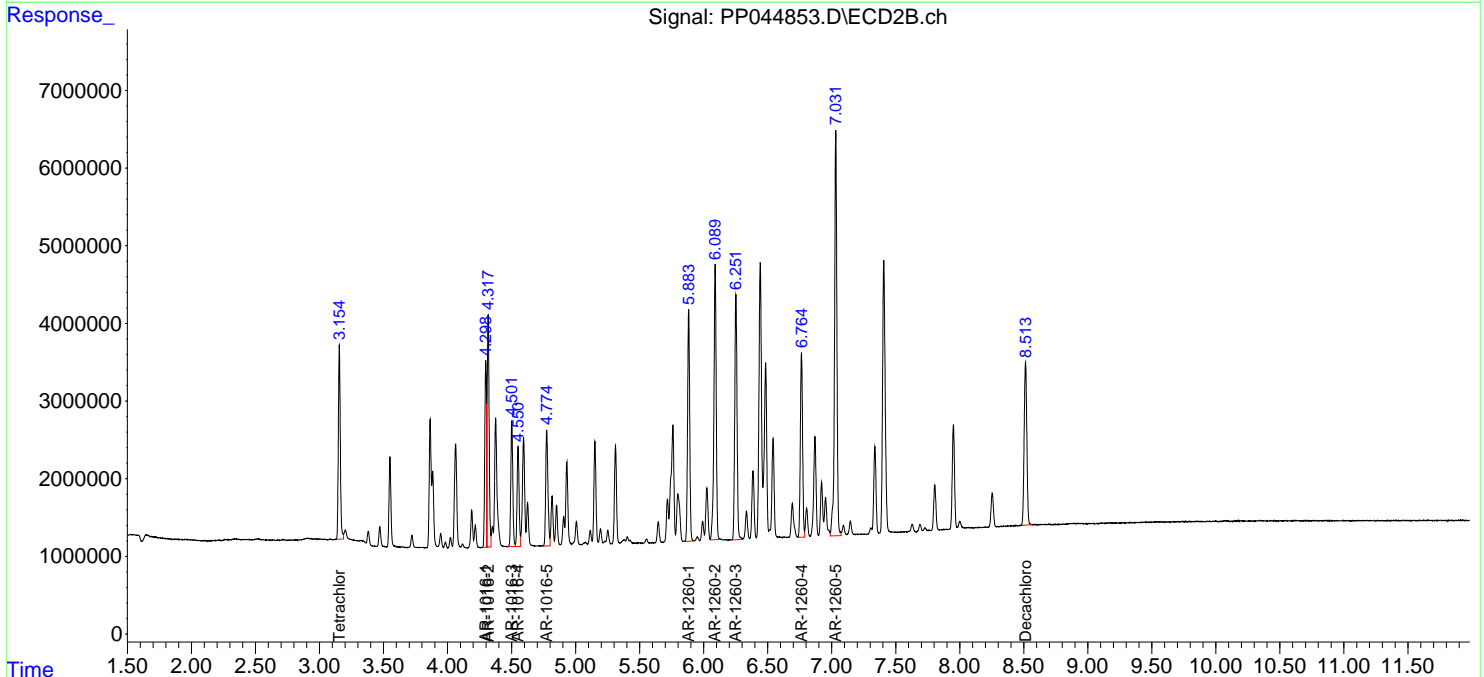
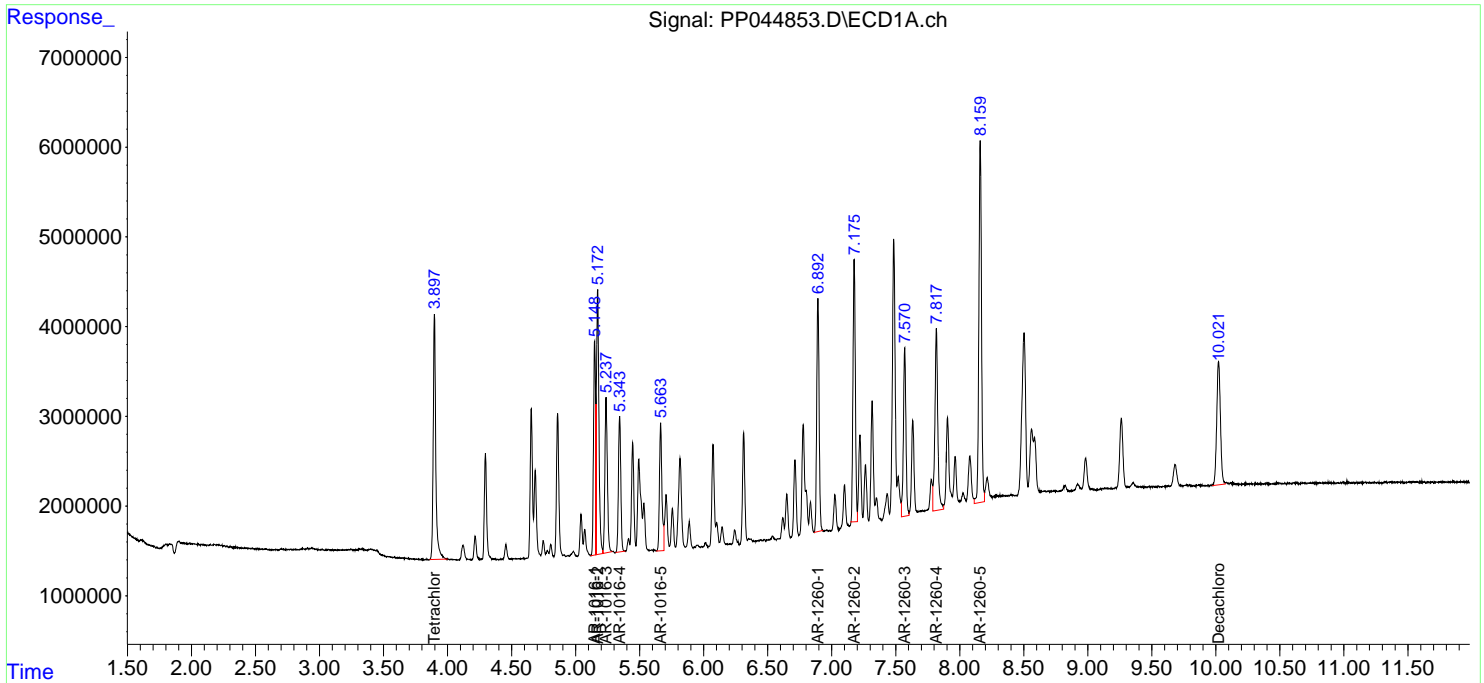
(f)=RT Delta > 1/2 Window (#)=Amounts differ by > 25% (m)=manual int.

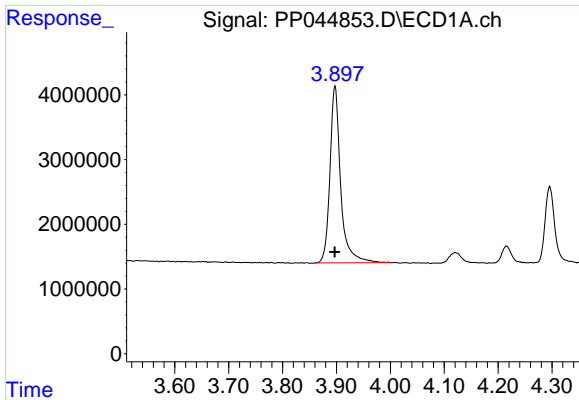
Data Path : Z:\pestpcbsrv\HPCHEM1\ECD_P\Data\PP031822\
 Data File : PP044853.D
 Signal(s) : Signal #1: ECD1A.ch Signal #2: ECD2B.ch
 Acq On : 17 Mar 2022 13:43
 Operator : YP\AJ
 Sample : PB143410BS
 Misc :
 ALS Vial : 9 Sample Multiplier: 1

Instrument :
 ECD_P
 ClientSampleId :
 PB143410BS

Integration File signal 1: autoint1.e
 Integration File signal 2: autoint2.e
 Quant Time: Mar 18 00:21:51 2022
 Quant Method : Z:\pestpcbsrv\HPCHEM1\ECD_P\methods\PP031722.M
 Quant Title : GC EXTRACTABLES
 QLast Update : Thu Mar 17 04:32:40 2022
 Response via : Initial Calibration
 Integrator: ChemStation

Volume Inj. : 2 µl
 Signal #1 Phase : ZB-MR1 Signal #2 Phase: ZB-MR2
 Signal #1 Info : 30Mx0.32mmx 0.50µ Signal #2 Info : 30M x 0.32mm x 0.25µm

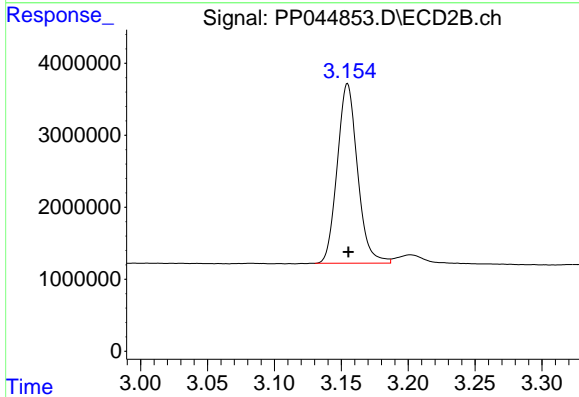




#1 Tetrachloro-m-xylene

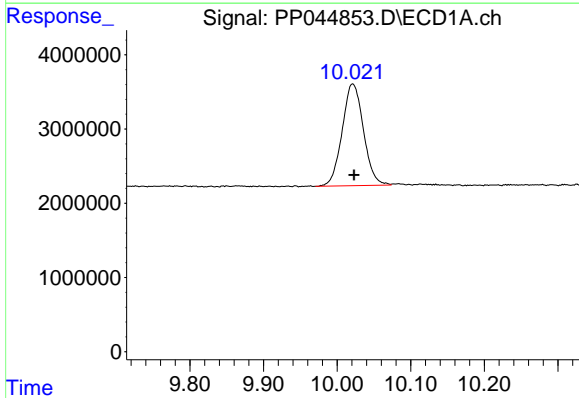
R.T.: 3.898 min
 Delta R.T.: 0.000 min
 Response: 37759237
 Conc: 20.72 ng/ml

Instrument :
 ECD_P
 ClientSampleId :
 PB143410BS



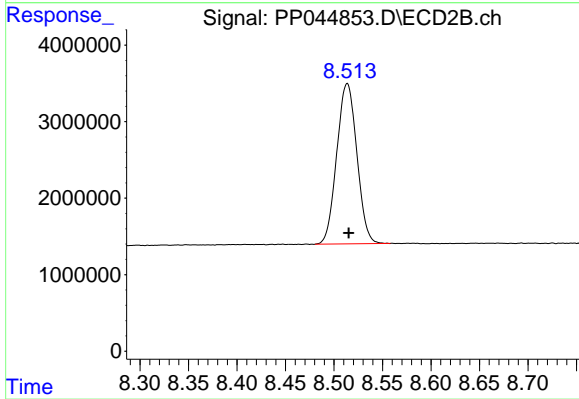
#1 Tetrachloro-m-xylene

R.T.: 3.155 min
 Delta R.T.: 0.000 min
 Response: 26363892
 Conc: 20.01 ng/ml



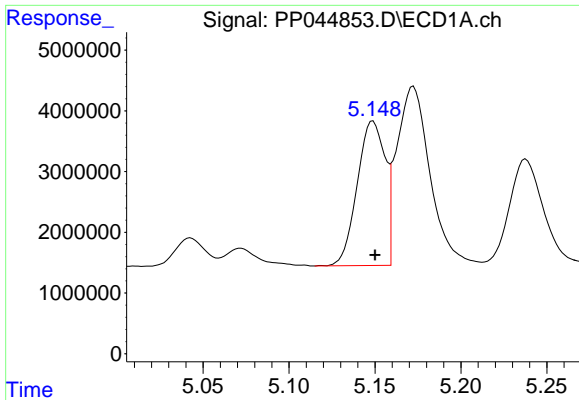
#2 Decachlorobiphenyl

R.T.: 10.021 min
 Delta R.T.: -0.002 min
 Response: 27569423
 Conc: 21.42 ng/ml



#2 Decachlorobiphenyl

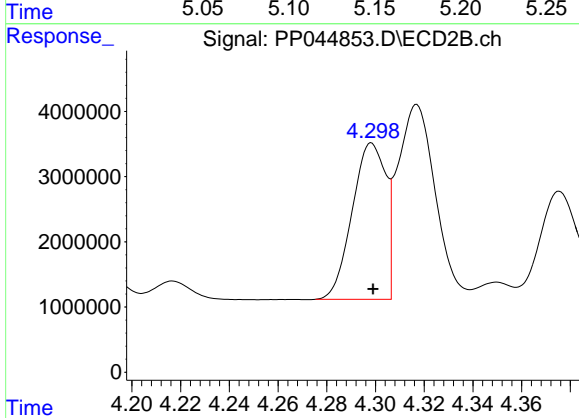
R.T.: 8.514 min
 Delta R.T.: -0.002 min
 Response: 30298477
 Conc: 23.32 ng/ml



#3 AR-1016-1

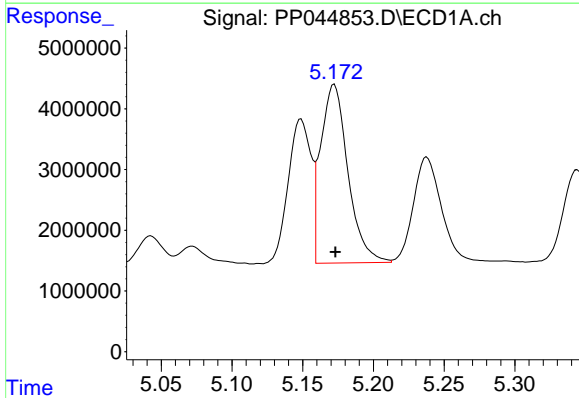
R.T.: 5.149 min
 Delta R.T.: -0.001 min
 Response: 26721264
 Conc: 455.38 ng/ml

Instrument :
 ECD_P
 ClientSampleId :
 PB143410BS



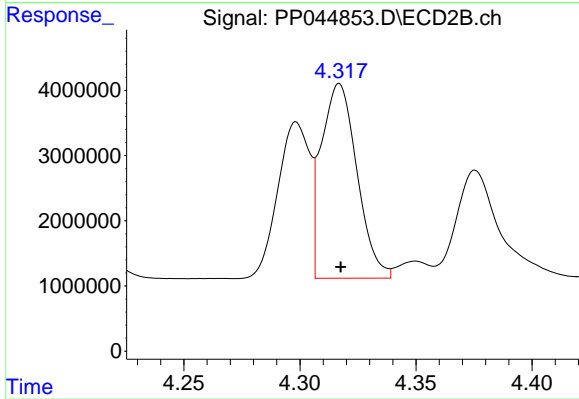
#3 AR-1016-1

R.T.: 4.298 min
 Delta R.T.: 0.000 min
 Response: 22939980
 Conc: 452.86 ng/ml



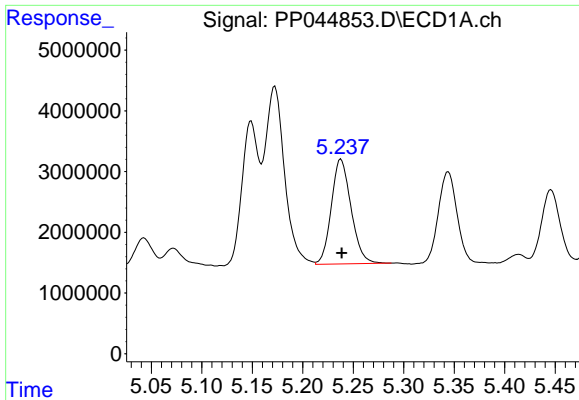
#4 AR-1016-2

R.T.: 5.172 min
 Delta R.T.: 0.000 min
 Response: 39518875
 Conc: 442.07 ng/ml



#4 AR-1016-2

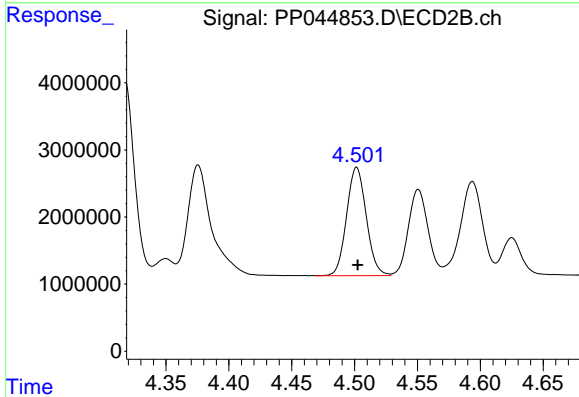
R.T.: 4.317 min
 Delta R.T.: 0.000 min
 Response: 31950605
 Conc: 443.21 ng/ml



#5 AR-1016-3

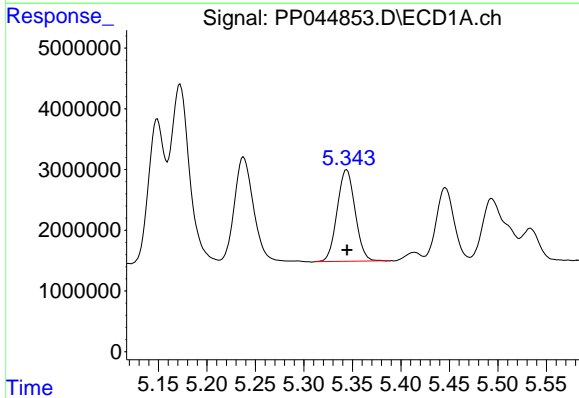
R.T.: 5.238 min
 Delta R.T.: 0.000 min
 Response: 23515304
 Conc: 451.84 ng/ml

Instrument :
 ECD_P
 ClientSampleId :
 PB143410BS



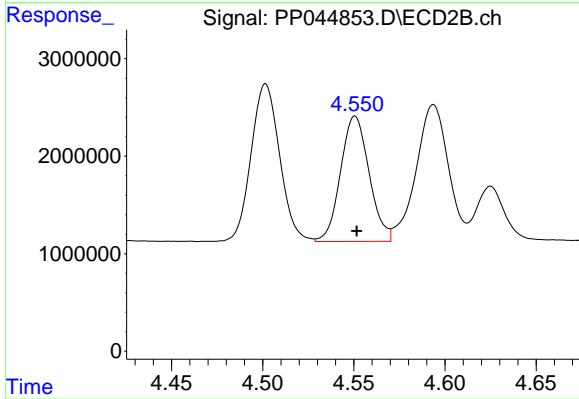
#5 AR-1016-3

R.T.: 4.502 min
 Delta R.T.: 0.000 min
 Response: 17656236
 Conc: 448.75 ng/ml



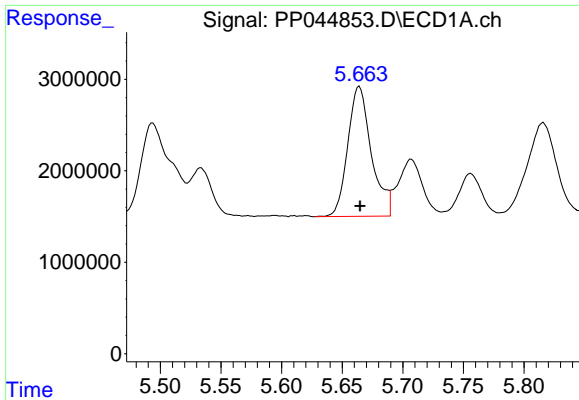
#6 AR-1016-4

R.T.: 5.344 min
 Delta R.T.: 0.000 min
 Response: 19449873
 Conc: 454.54 ng/ml



#6 AR-1016-4

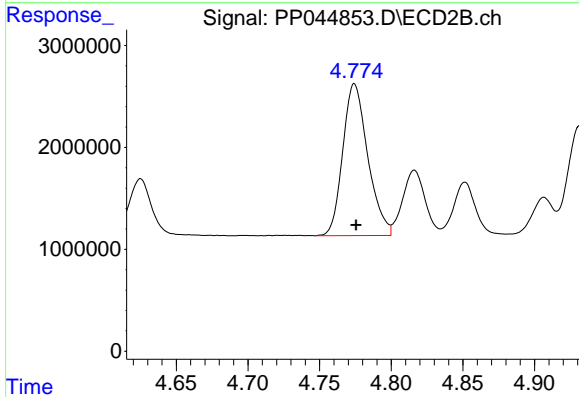
R.T.: 4.551 min
 Delta R.T.: 0.000 min
 Response: 14031064
 Conc: 445.66 ng/ml



#7 AR-1016-5

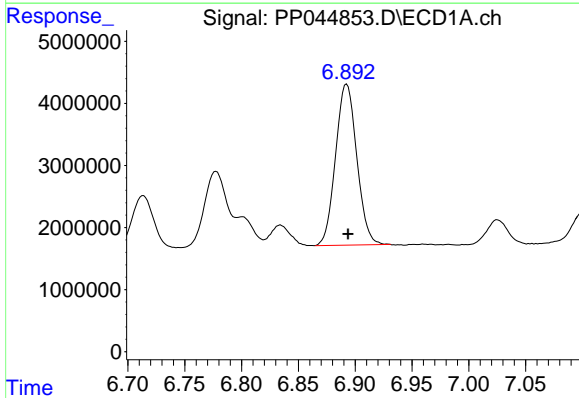
R.T.: 5.664 min
 Delta R.T.: 0.000 min
 Response: 19214099
 Conc: 437.83 ng/ml

Instrument :
 ECD_P
 ClientSampleId :
 PB143410BS



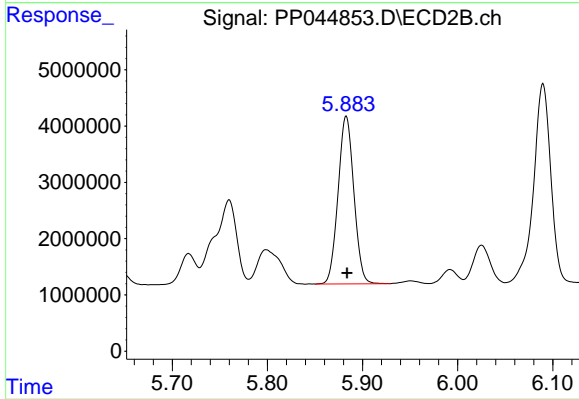
#7 AR-1016-5

R.T.: 4.774 min
 Delta R.T.: -0.001 min
 Response: 18112385
 Conc: 453.77 ng/ml



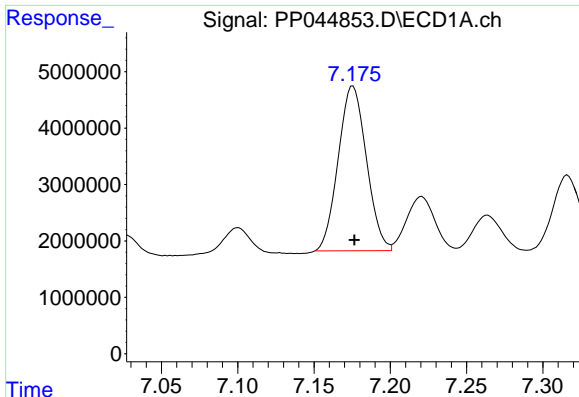
#31 AR-1260-1

R.T.: 6.893 min
 Delta R.T.: 0.000 min
 Response: 33828257
 Conc: 491.36 ng/ml



#31 AR-1260-1

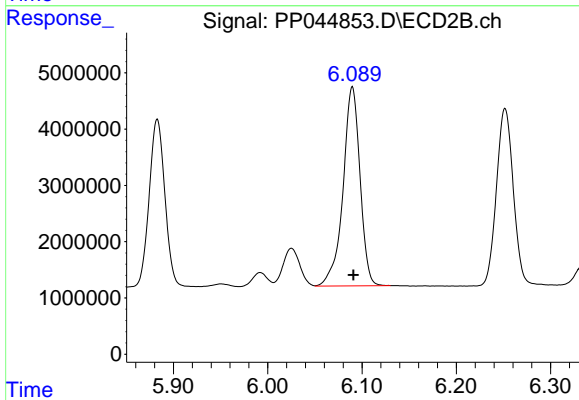
R.T.: 5.883 min
 Delta R.T.: 0.000 min
 Response: 34501219
 Conc: 490.00 ng/ml



#32 AR-1260-2

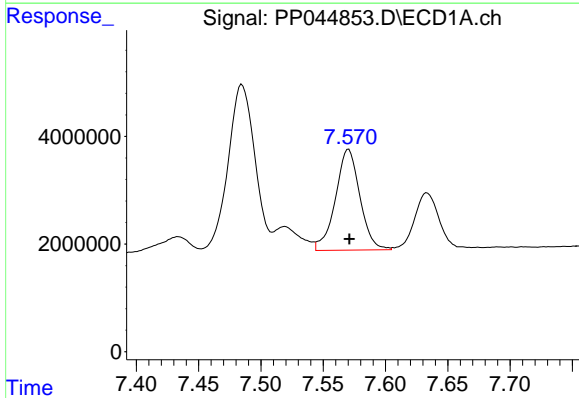
R.T.: 7.176 min
Delta R.T.: -0.001 min
Response: 37577631
Conc: 484.00 ng/ml

Instrument :
ECD_P
ClientSampleId :
PB143410BS



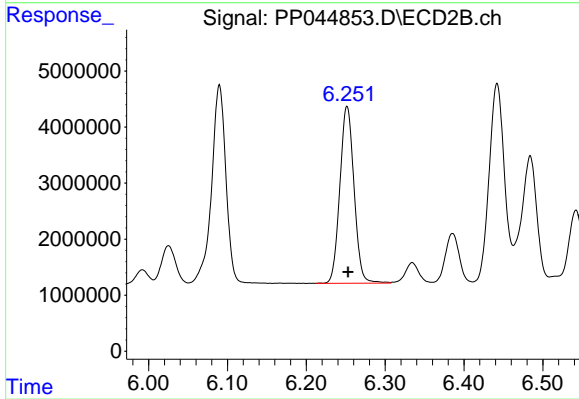
#32 AR-1260-2

R.T.: 6.090 min
Delta R.T.: -0.001 min
Response: 44353633
Conc: 495.96 ng/ml



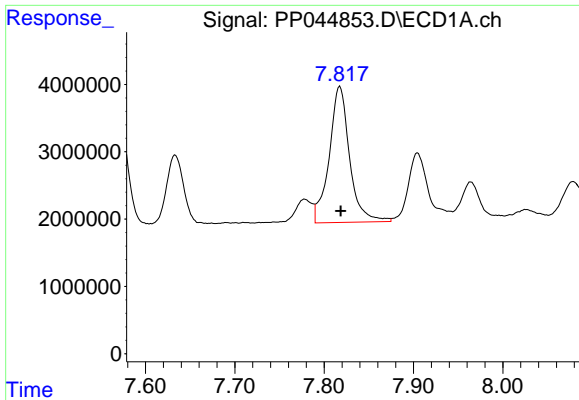
#33 AR-1260-3

R.T.: 7.570 min
Delta R.T.: 0.000 min
Response: 25693142
Conc: 408.31 ng/ml



#33 AR-1260-3

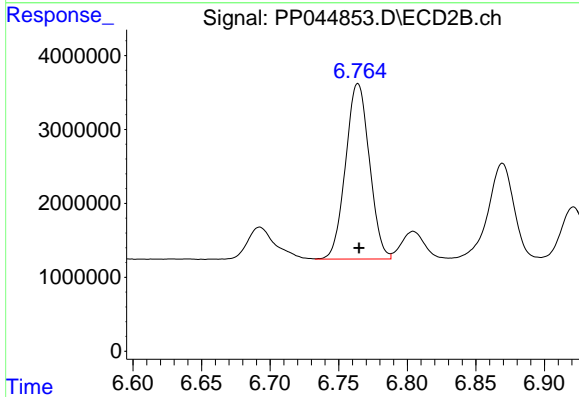
R.T.: 6.252 min
Delta R.T.: -0.001 min
Response: 39462318
Conc: 463.34 ng/ml



#34 AR-1260-4

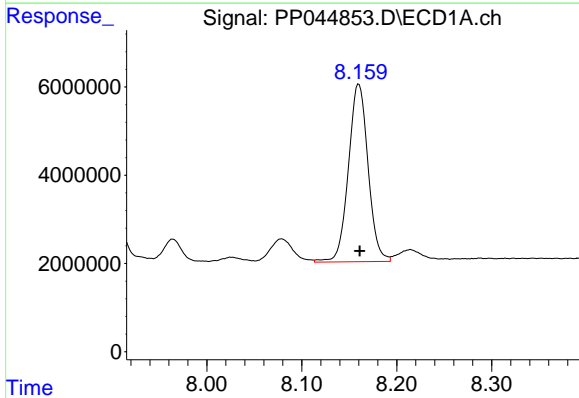
R.T.: 7.818 min
 Delta R.T.: 0.000 min
 Response: 32021684
 Conc: 436.53 ng/ml

Instrument :
 ECD_P
 ClientSampleId :
 PB143410BS



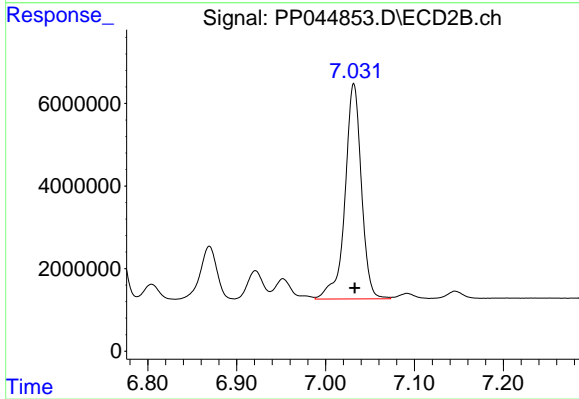
#34 AR-1260-4

R.T.: 6.764 min
 Delta R.T.: 0.000 min
 Response: 28716377
 Conc: 427.28 ng/ml



#35 AR-1260-5

R.T.: 8.160 min
 Delta R.T.: 0.000 min
 Response: 57942746
 Conc: 413.78 ng/ml



#35 AR-1260-5

R.T.: 7.032 min
 Delta R.T.: -0.001 min
 Response: 66926560
 Conc: 428.31 ng/ml