

Data Path : Z:\pestpcbsrv\HPCHEM1\ECD_P\Data\PP031822\
 Data File : PP044854.D
 Signal(s) : Signal #1: ECD1A.ch Signal #2: ECD2B.ch
 Acq On : 17 Mar 2022 13:58
 Operator : YP\AJ
 Sample : N1979-01
 Misc :
 ALS Vial : 10 Sample Multiplier: 1

Instrument :
 ECD_P
ClientSampleId :
 RT4743

Manual Integrations
APPROVED

Reviewed By :Yogesh Patel 03/18/2022
 Supervised By :Ankita Jodhani 03/18/2022

Integration File signal 1: autoint1.e
 Integration File signal 2: autoint2.e
 Quant Time: Mar 18 00:23:58 2022
 Quant Method : Z:\pestpcbsrv\HPCHEM1\ECD_P\methods\PP031722.M
 Quant Title : GC EXTRACTABLES
 QLast Update : Thu Mar 17 04:32:40 2022
 Response via : Initial Calibration
 Integrator: ChemStation

Volume Inj. : 2 µl
 Signal #1 Phase : ZB-MR1 Signal #2 Phase: ZB-MR2
 Signal #1 Info : 30Mx0.32mmx 0.50µ Signal #2 Info : 30M x 0.32mm x 0.25µm

Compound	RT#1	RT#2	Resp#1	Resp#2	ng/ml	ng/ml

System Monitoring Compounds						
1) SA Tetrachlo...	3.896	3.155	25501922	25602969	13.996m	19.428m#
2) SA Decachlor...	10.023	8.514	19255095	20913169	14.958	16.095m

Target Compounds

 (f)=RT Delta > 1/2 Window (#)=Amounts differ by > 25% (m)=manual int.

Data Path : Z:\pestpcbsrv\HPCHEM1\ECD_P\Data\PP031822\
Data File : PP044854.D
Signal(s) : Signal #1: ECD1A.ch Signal #2: ECD2B.ch
Acq On : 17 Mar 2022 13:58
Operator : YP\AJ
Sample : N1979-01
Misc :
ALS Vial : 10 Sample Multiplier: 1

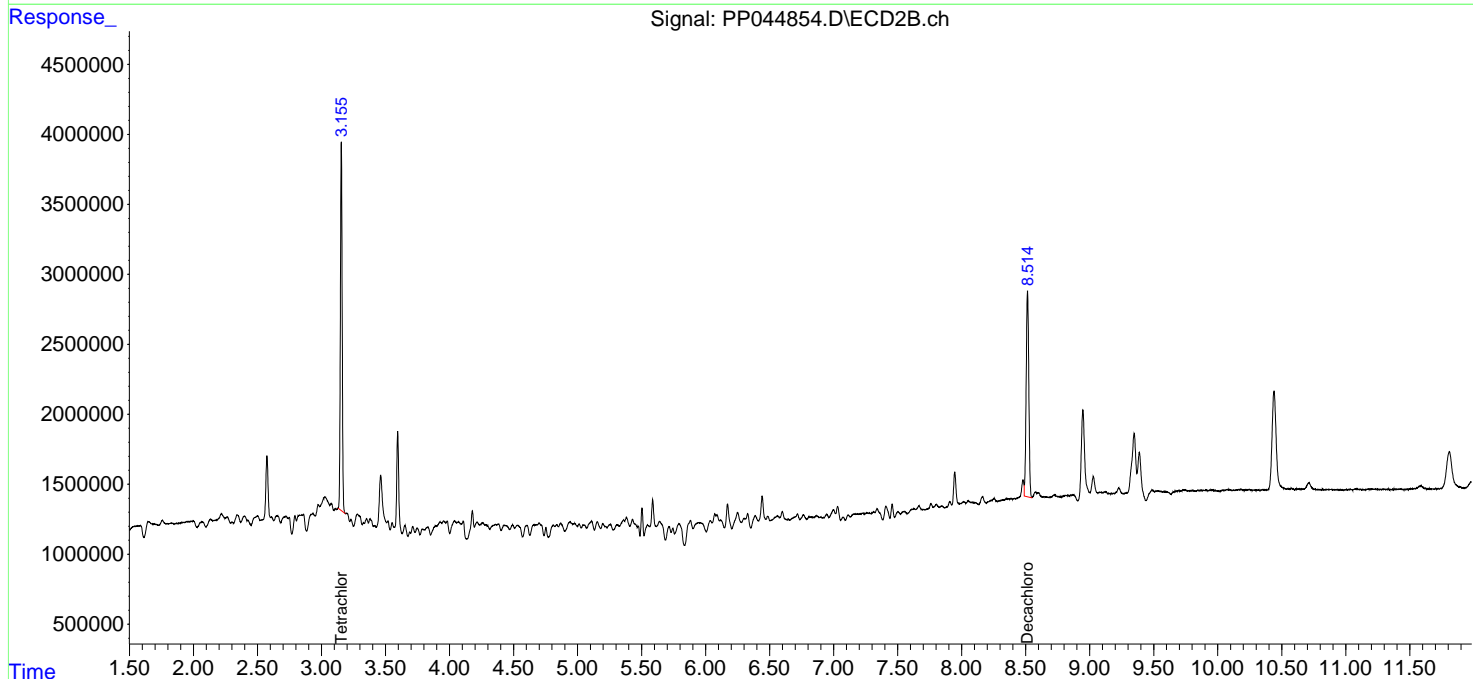
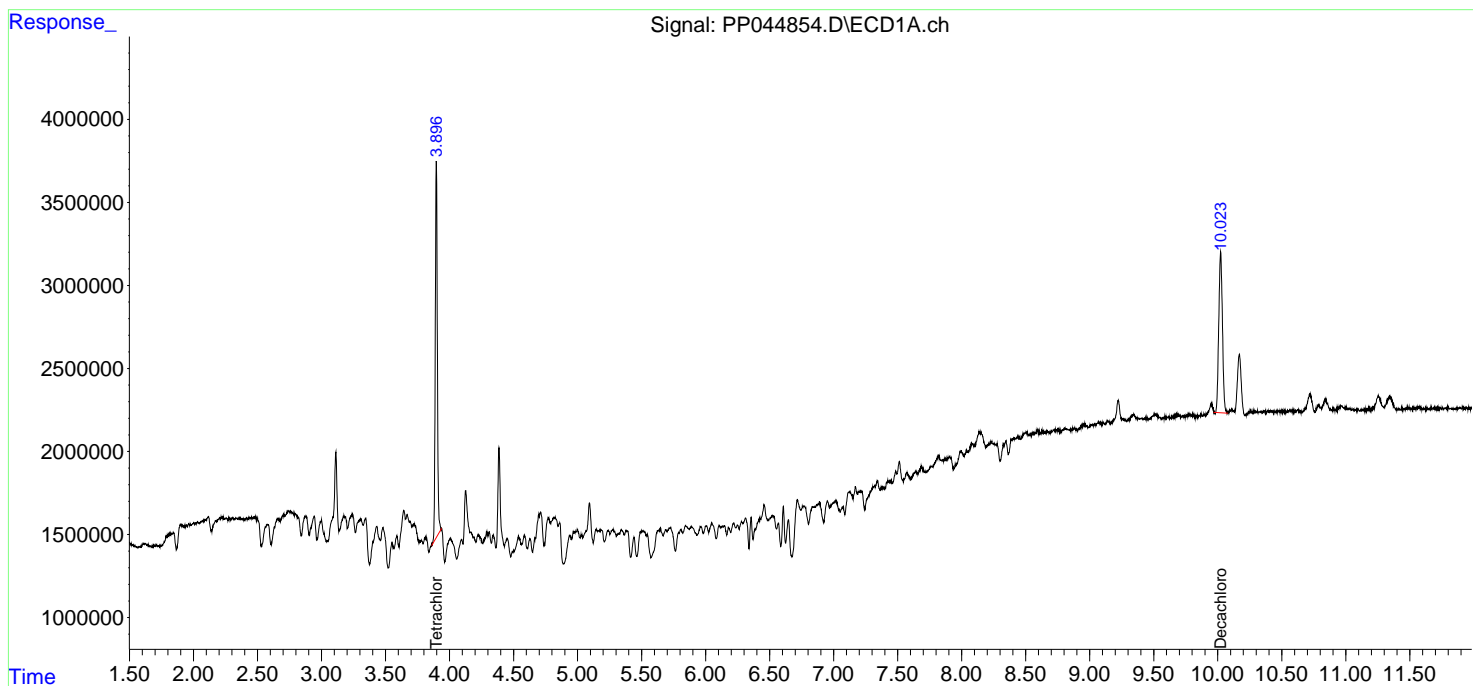
Instrument :
ECD_P
ClientSampleId :
RT4743

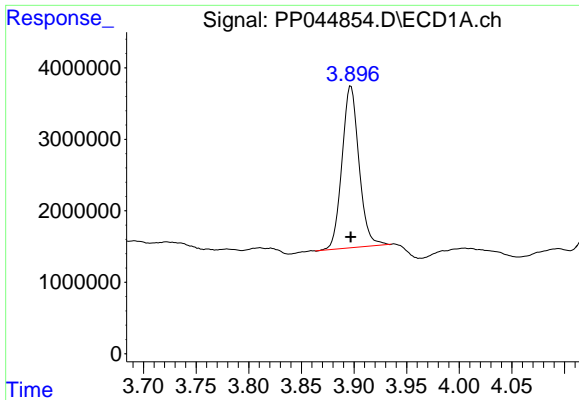
Manual Integrations
APPROVED

Reviewed By :Yogesh Patel 03/18/2022
Supervised By :Ankita Jodhani 03/18/2022

Integration File signal 1: autoint1.e
Integration File signal 2: autoint2.e
Quant Time: Mar 18 00:23:58 2022
Quant Method : Z:\pestpcbsrv\HPCHEM1\ECD_P\methods\PP031722.M
Quant Title : GC EXTRACTABLES
QLast Update : Thu Mar 17 04:32:40 2022
Response via : Initial Calibration
Integrator: ChemStation

Volume Inj. : 2 µl
Signal #1 Phase : ZB-MR1 Signal #2 Phase: ZB-MR2
Signal #1 Info : 30Mx0.32mmx 0.50µ Signal #2 Info : 30M x 0.32mm x 0.25µm

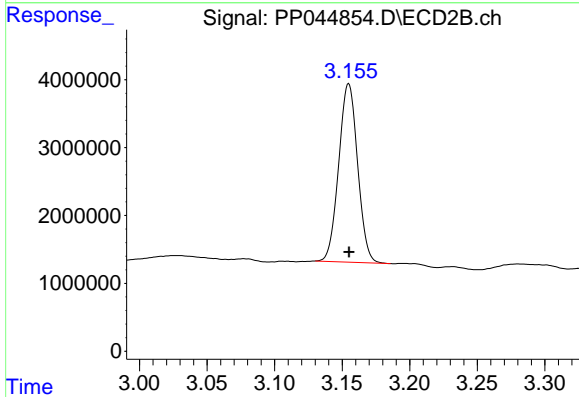




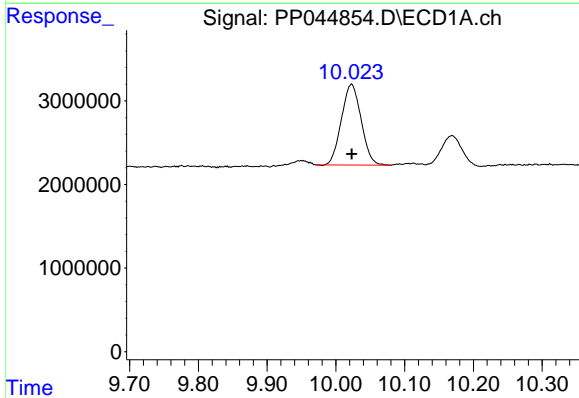
#1 Tetrachloro-m-xylene
 R.T.: 3.896 min
 Delta R.T.: 0.000 min
 Response: 25501922
 Conc: 14.00 ng/ml

Instrument :
 ECD_P
 ClientSampleId :
 RT4743

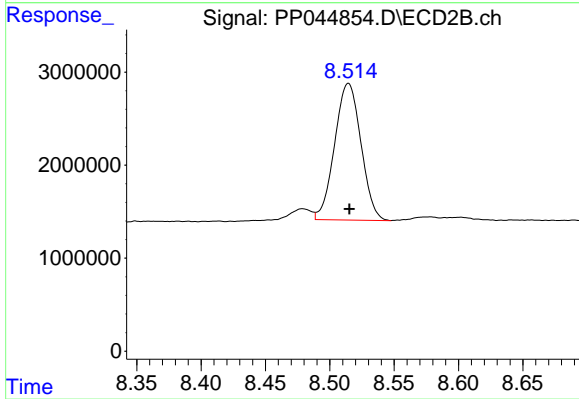
Manual Integrations
APPROVED
 Reviewed By :Yogesh Patel 03/18/2022
 Supervised By :Ankita Jodhani 03/18/2022



#1 Tetrachloro-m-xylene
 R.T.: 3.155 min
 Delta R.T.: 0.000 min
 Response: 25602969
 Conc: 19.43 ng/ml m



#2 Decachlorobiphenyl
 R.T.: 10.023 min
 Delta R.T.: 0.000 min
 Response: 19255095
 Conc: 14.96 ng/ml



#2 Decachlorobiphenyl
 R.T.: 8.514 min
 Delta R.T.: -0.001 min
 Response: 20913169
 Conc: 16.09 ng/ml m