

Data Path : Z:\pestpcbsrv\HPCHEM1\ECD_P\Data\PP031919\
 Data File : PP029429.D
 Signal(s) : Signal #1: ECD1A.CH Signal #2: ECD2B.CH
 Acq On : 20 Mar 2019 3:16
 Operator : EI\MA
 Sample : K1951-03
 Misc : hexane
 ALS Vial : 37 Sample Multiplier: 1

Instrument :
 ECD_P
ClientSampleId :
 FK-GF-03-006-B

Manual Integrations
APPROVED
 Sohil
 3/20/2019 4:06:31 PM

Integration File signal 1: autoint1.e
 Integration File signal 2: autoint2.e
 Quant Time: Mar 20 03:39:03 2019
 Quant Method : Z:\pestpcbsrv\HPCHEM1\ECD_P\methods\PP022119.M
 Quant Title : 8080.M
 QLast Update : Fri Feb 22 02:24:04 2019
 Response via : Initial Calibration
 Integrator: ChemStation 6890 Scale Mode: Large solvent peaks clipped

Volume Inj. : 2 µl
 Signal #1 Phase : ZB-CLPesticides-1 Signal #2 Phase: ZB-CLPesticides-2
 Signal #1 Info : 30M x 0.32mm x0.5 Signal #2 Info : 30M x 0.32mm x 0.25µm

Compound	RT#1	RT#2	Resp#1	Resp#2	ng/ml	ng/ml

System Monitoring Compounds						
4) S 2,4-DCAA	11.926	12.123	11694410	12917873	389.083m	340.369m

Target Compounds

(f)=RT Delta > 1/2 Window (#)=Amounts differ by > 25% (m)=manual int.

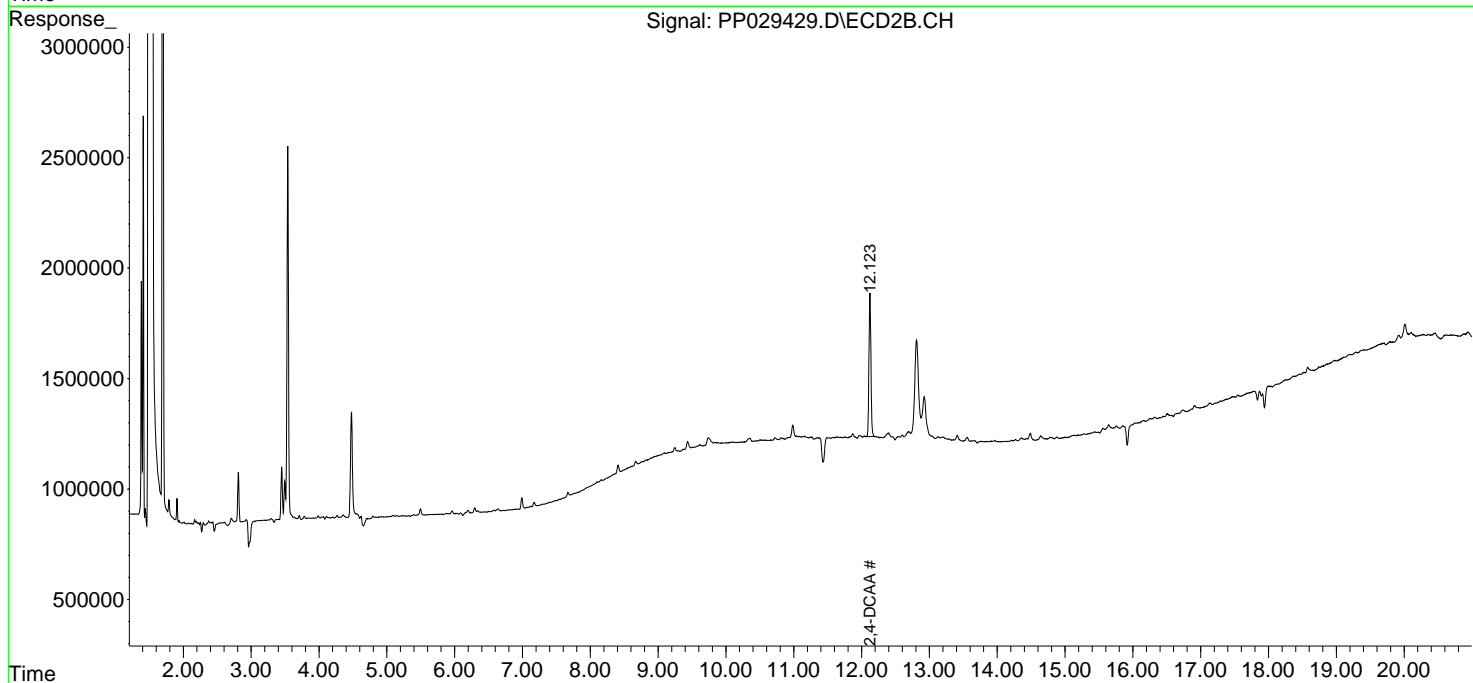
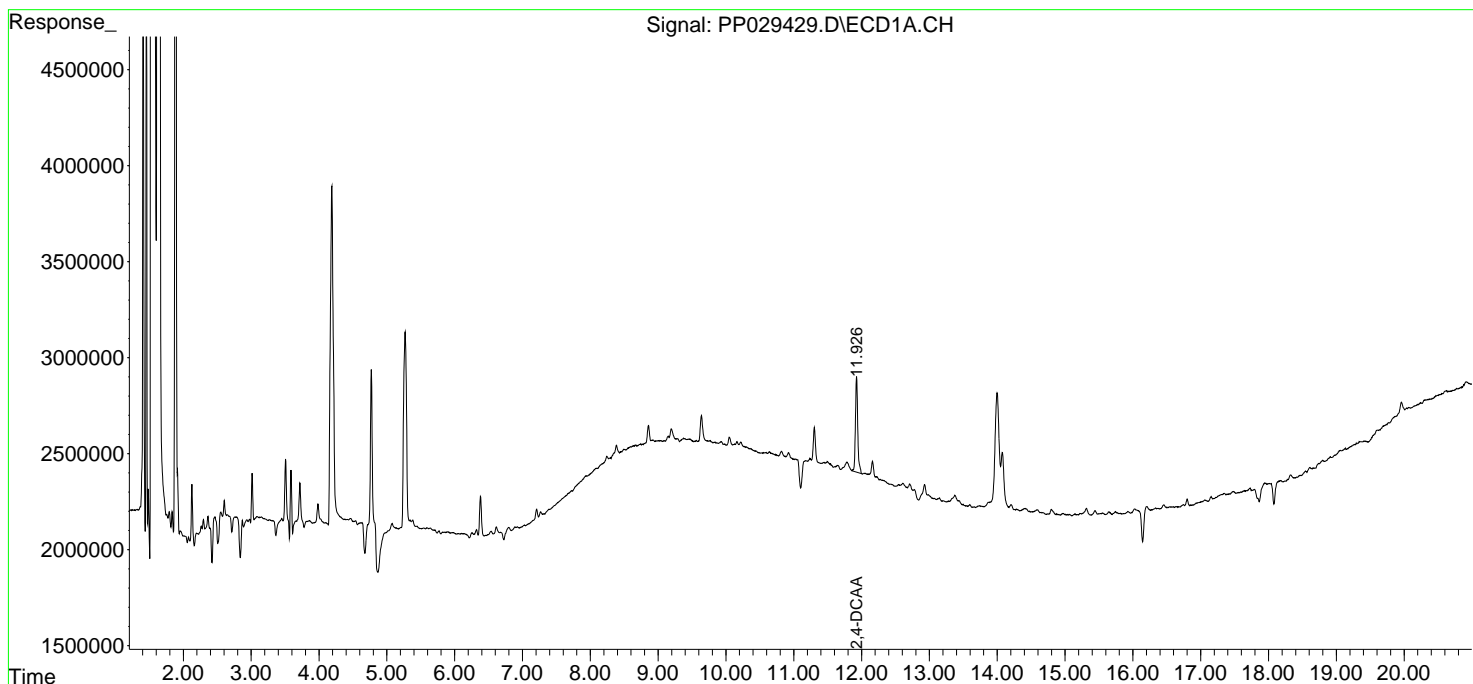
Data Path : Z:\pestpcbsrv\HPCHEM1\ECD_P\Data\PP031919\
 Data File : PP029429.D
 Signal(s) : Signal #1: ECD1A.CH Signal #2: ECD2B.CH
 Acq On : 20 Mar 2019 3:16
 Operator : EI\MA
 Sample : K1951-03
 Misc : hexane
 ALS Vial : 37 Sample Multiplier: 1

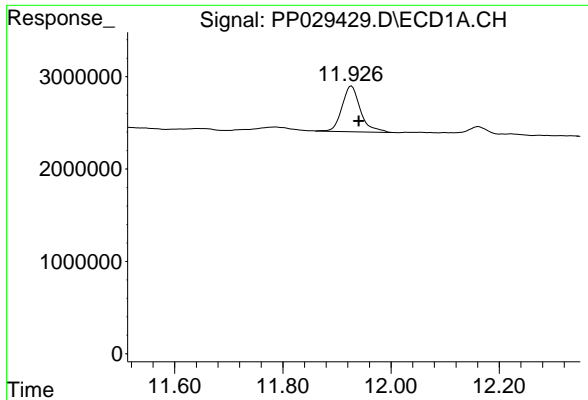
Instrument :
 ECD_P
 ClientSampled :
 FK-GF-03-006-B

Manual Integrations
APPROVED
 Sohil
 3/20/2019 4:06:31 PM

Integration File signal 1: autoint1.e
 Integration File signal 2: autoint2.e
 Quant Time: Mar 20 03:39:03 2019
 Quant Method : Z:\pestpcbsrv\HPCHEM1\ECD_P\methods\PP022119.M
 Quant Title : 8080.M
 QLast Update : Fri Feb 22 02:24:04 2019
 Response via : Initial Calibration
 Integrator: ChemStation 6890 Scale Mode: Large solvent peaks clipped

Volume Inj. : 2 µl
 Signal #1 Phase : ZB-CLPesticides-1 Signal #2 Phase: ZB-CLPesticides-2
 Signal #1 Info : 30M x 0.32mm x0.5 Signal #2 Info : 30M x 0.32mm x 0.25µm



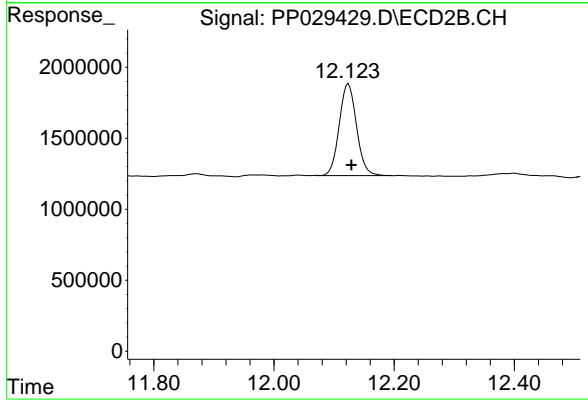


#4 2,4-DCAA

R.T.: 11.926 min
Delta R.T.: -0.015 min
Response: 11694410
Conc: 389.08 ng/ml m

Instrument :
ECD_P
ClientSampled :
FK-GF-03-006-B

Manual Integrations
APPROVED
Sohil
3/20/2019 4:06:31 PM



#4 2,4-DCAA

R.T.: 12.123 min
Delta R.T.: -0.006 min
Response: 12917873
Conc: 340.37 ng/ml m