

Data Path : Z:\pestpcbsrv\HPCHEM1\ECD_P\Data\PP031922\
 Data File : PP044877.D
 Signal(s) : Signal #1: ECD1A.ch Signal #2: ECD2B.ch
 Acq On : 18 Mar 2022 09:48
 Operator : YP\AJ
 Sample : AR1660CCC500
 Misc :
 ALS Vial : 3 Sample Multiplier: 1

Instrument :
 ECD_P
 ClientSampleId :
 AR1660CCC500

Integration File signal 1: autoint1.e
 Integration File signal 2: autoint2.e
 Quant Time: Mar 18 13:50:04 2022
 Quant Method : Z:\pestpcbsrv\HPCHEM1\ECD_P\methods\PP031722.M
 Quant Title : GC EXTRACTABLES
 QLast Update : Thu Mar 17 04:32:40 2022
 Response via : Initial Calibration
 Integrator: ChemStation

Volume Inj. : 2 µl
 Signal #1 Phase : ZB-MR2 Signal #2 Phase: ZB-MR2
 Signal #1 Info : 30Mx0.32mmx 0.50µ Signal #2 Info : 30M x 0.32mm x 0.25µm

Compound	RT#1	RT#2	Resp#1	Resp#2	ng/ml	ng/ml

System Monitoring Compounds						
1) SA Tetrachlo...	3.897	3.156	104.6E6	74988657	57.391	56.903
2) SA Decachlor...	10.022	8.514	66882950	68283926	51.957	52.551
Target Compounds						
3) L1 AR-1016-1	5.149	4.298	34101182	29201163	581.142	576.468
4) L1 AR-1016-2	5.172	4.317	49942468	40683971	558.667	564.363
5) L1 AR-1016-3	5.238	4.502	30103892	22694720	578.441	576.813
6) L1 AR-1016-4	5.343	4.551	24916053	18556550	582.288	589.406
7) L1 AR-1016-5	5.664	4.775	24472719	23207341	557.654	581.416
31) L7 AR-1260-1	6.893	5.883	36647278	40003748	532.310	568.147
32) L7 AR-1260-2	7.176	6.090	40861903	47550130	526.304	531.708
33) L7 AR-1260-3	7.571	6.252	32680696	44495410	519.350	522.435
34) L7 AR-1260-4	7.818	6.764	38160235	36738857	520.207	546.652
35) L7 AR-1260-5	8.160	7.032	71126086	86462080	507.923	553.333

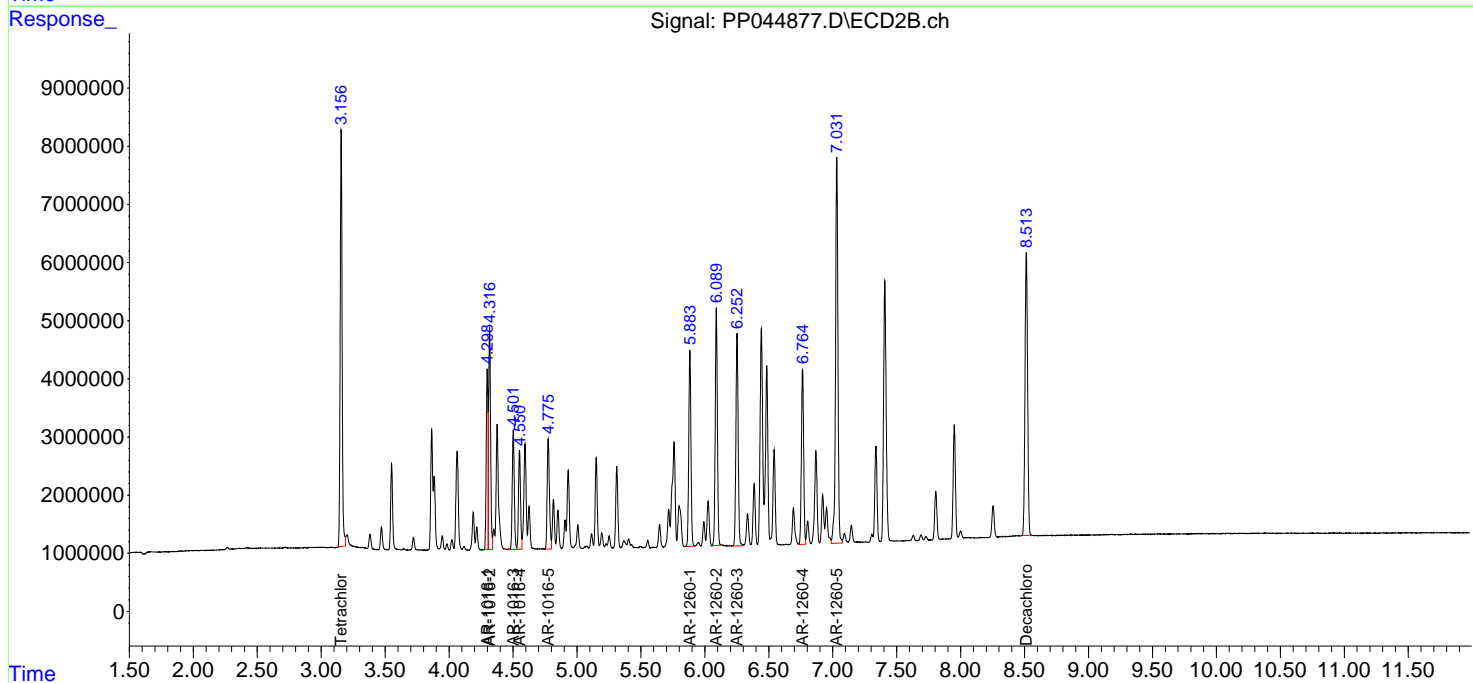
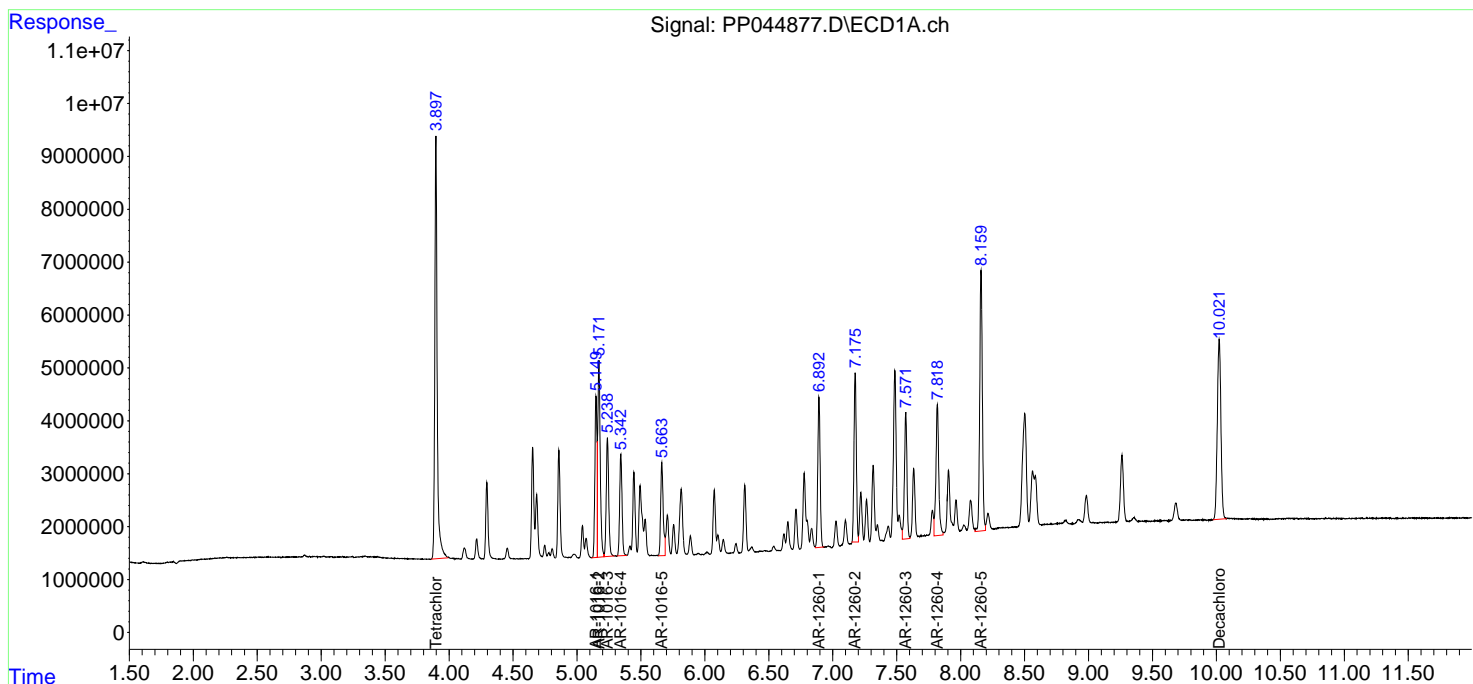
(f)=RT Delta > 1/2 Window (#)=Amounts differ by > 25% (m)=manual int.

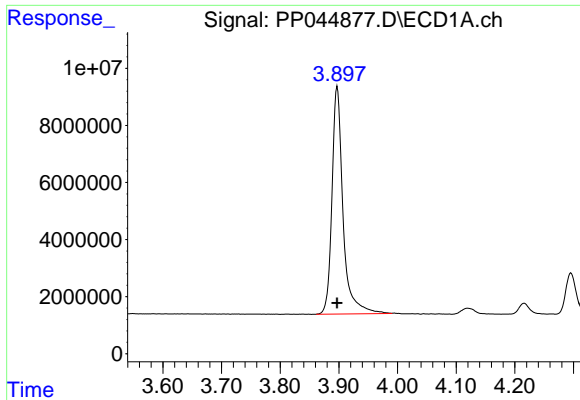
Data Path : Z:\pestpcbsrv\HPCHEM1\ECD_P\Data\PP031922\
 Data File : PP044877.D
 Signal(s) : Signal #1: ECD1A.ch Signal #2: ECD2B.ch
 Acq On : 18 Mar 2022 09:48
 Operator : YP\AJ
 Sample : AR1660CCC500
 Misc :
 ALS Vial : 3 Sample Multiplier: 1

Instrument :
 ECD_P
 ClientSampleId :
 AR1660CCC500

Integration File signal 1: autoint1.e
 Integration File signal 2: autoint2.e
 Quant Time: Mar 18 13:50:04 2022
 Quant Method : Z:\pestpcbsrv\HPCHEM1\ECD_P\methods\PP031722.M
 Quant Title : GC EXTRACTABLES
 QLast Update : Thu Mar 17 04:32:40 2022
 Response via : Initial Calibration
 Integrator: ChemStation

Volume Inj. : 2 µl
 Signal #1 Phase : ZB-MR1 Signal #2 Phase: ZB-MR2
 Signal #1 Info : 30Mx0.32mmx 0.50µ Signal #2 Info : 30M x 0.32mm x 0.25µm

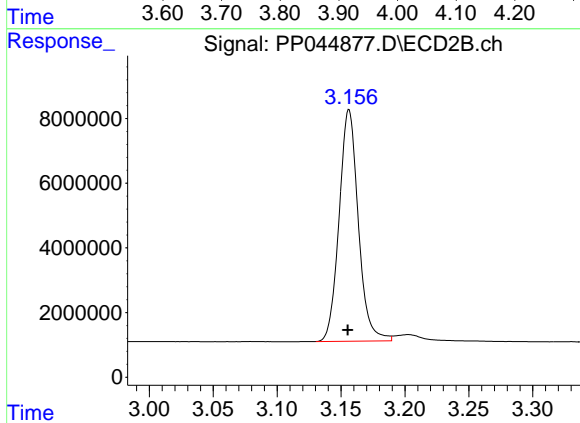




#1 Tetrachloro-m-xylene

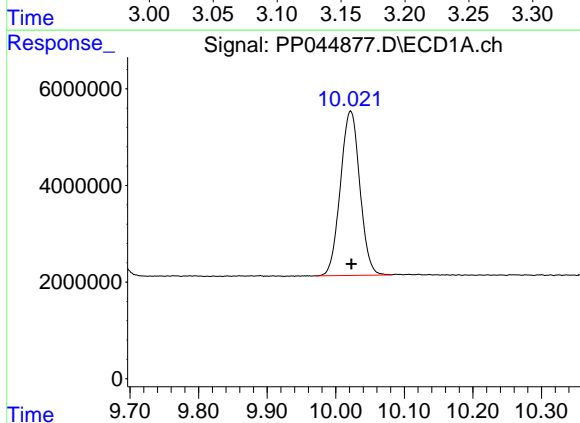
R.T.: 3.897 min
 Delta R.T.: 0.000 min
 Response: 104569365
 Conc: 57.39 ng/ml

Instrument :
 ECD_P
 ClientSampleId :
 AR1660CCC500



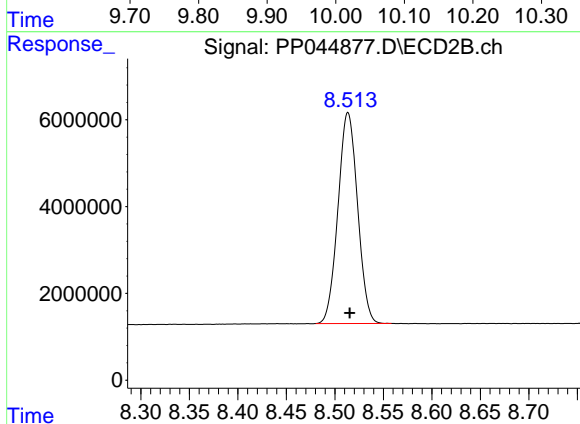
#1 Tetrachloro-m-xylene

R.T.: 3.156 min
 Delta R.T.: 0.001 min
 Response: 74988657
 Conc: 56.90 ng/ml



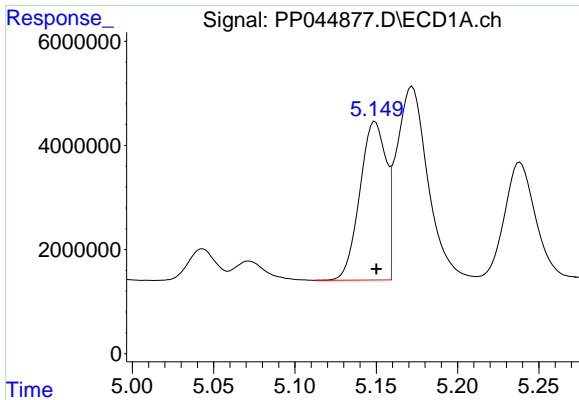
#2 Decachlorobiphenyl

R.T.: 10.022 min
 Delta R.T.: -0.001 min
 Response: 66882950
 Conc: 51.96 ng/ml



#2 Decachlorobiphenyl

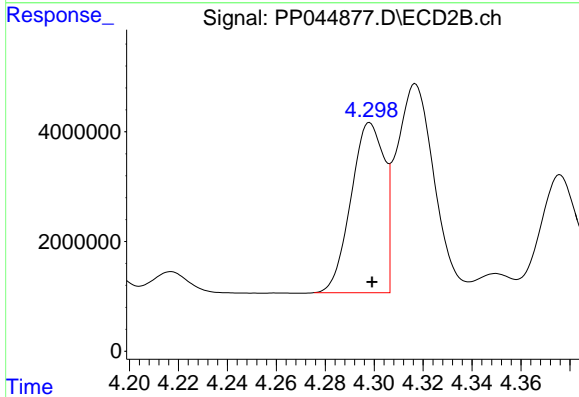
R.T.: 8.514 min
 Delta R.T.: -0.002 min
 Response: 68283926
 Conc: 52.55 ng/ml



#3 AR-1016-1

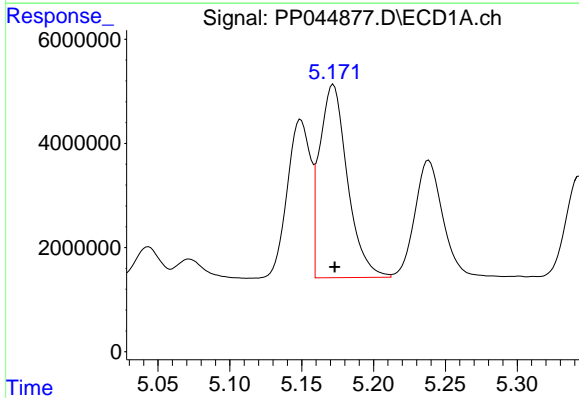
R.T.: 5.149 min
 Delta R.T.: 0.000 min
 Response: 34101182
 Conc: 581.14 ng/ml

Instrument :
 ECD_P
 ClientSampleId :
 AR1660CCC500



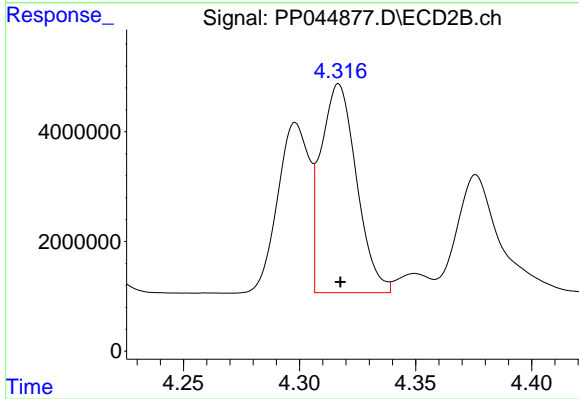
#3 AR-1016-1

R.T.: 4.298 min
 Delta R.T.: 0.000 min
 Response: 29201163
 Conc: 576.47 ng/ml



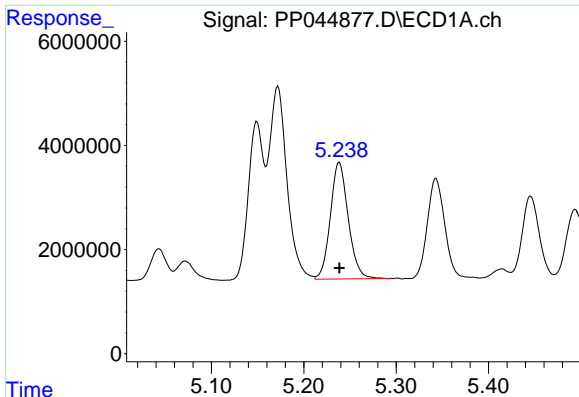
#4 AR-1016-2

R.T.: 5.172 min
 Delta R.T.: 0.000 min
 Response: 49942468
 Conc: 558.67 ng/ml



#4 AR-1016-2

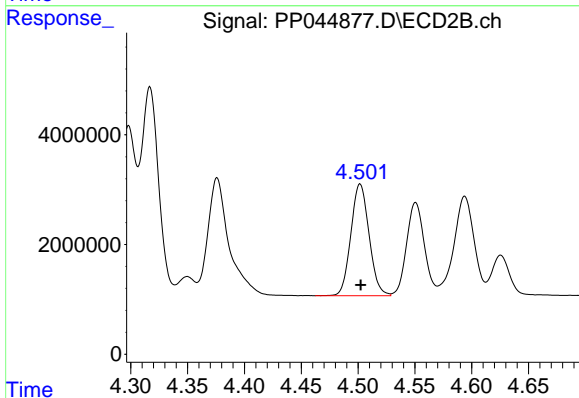
R.T.: 4.317 min
 Delta R.T.: 0.000 min
 Response: 40683971
 Conc: 564.36 ng/ml



#5 AR-1016-3

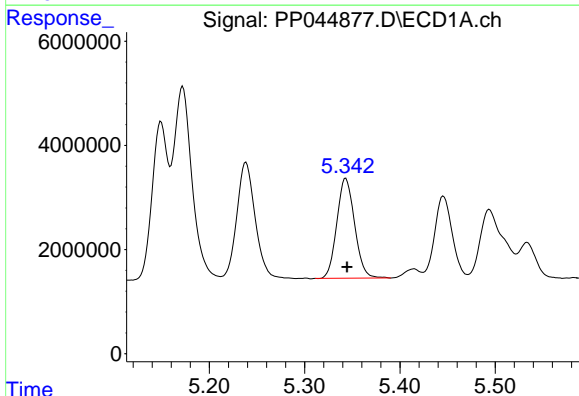
R.T.: 5.238 min
 Delta R.T.: 0.000 min
 Response: 30103892
 Conc: 578.44 ng/ml

Instrument :
 ECD_P
 ClientSampleId :
 AR1660CCC500



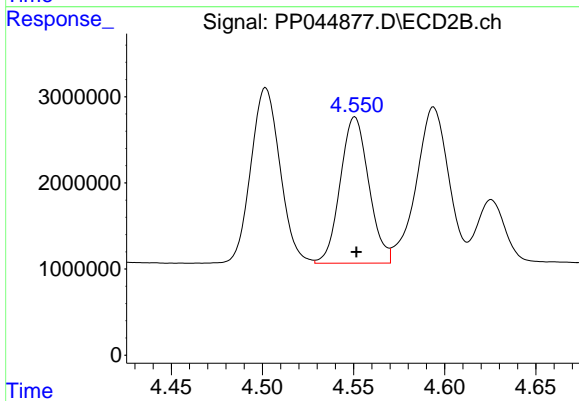
#5 AR-1016-3

R.T.: 4.502 min
 Delta R.T.: 0.000 min
 Response: 22694720
 Conc: 576.81 ng/ml



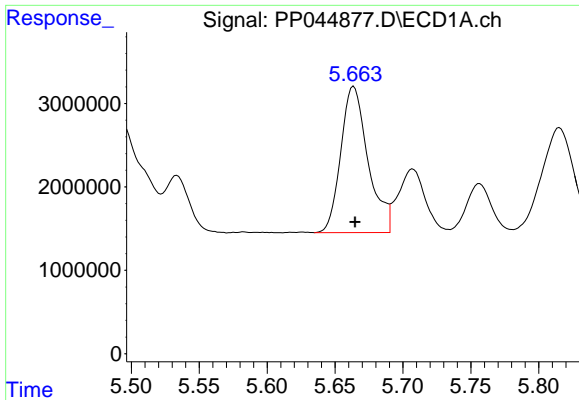
#6 AR-1016-4

R.T.: 5.343 min
 Delta R.T.: -0.001 min
 Response: 24916053
 Conc: 582.29 ng/ml



#6 AR-1016-4

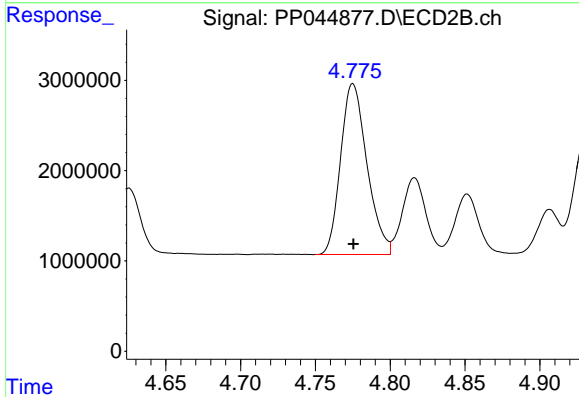
R.T.: 4.551 min
 Delta R.T.: 0.000 min
 Response: 18556550
 Conc: 589.41 ng/ml



#7 AR-1016-5

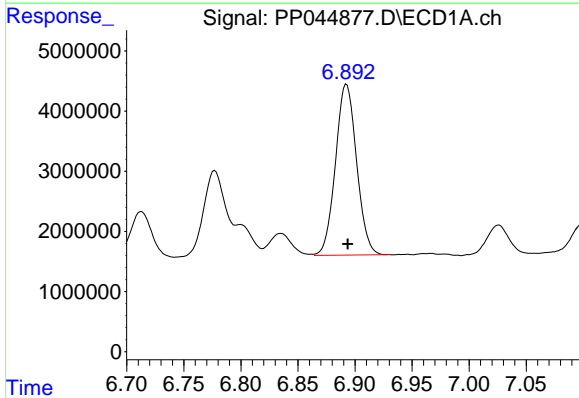
R.T.: 5.664 min
 Delta R.T.: 0.000 min
 Response: 24472719
 Conc: 557.65 ng/ml

Instrument :
 ECD_P
 ClientSampleId :
 AR1660CCC500



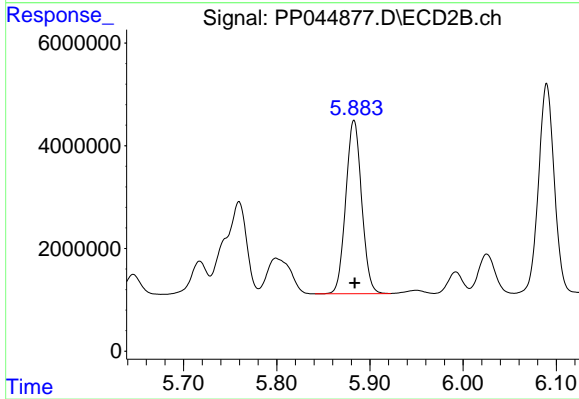
#7 AR-1016-5

R.T.: 4.775 min
 Delta R.T.: 0.000 min
 Response: 23207341
 Conc: 581.42 ng/ml



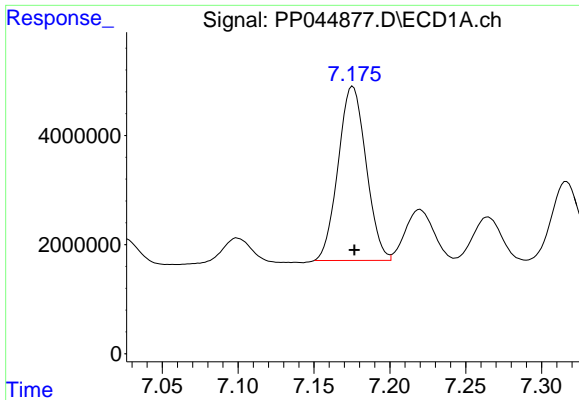
#31 AR-1260-1

R.T.: 6.893 min
 Delta R.T.: -0.001 min
 Response: 36647278
 Conc: 532.31 ng/ml



#31 AR-1260-1

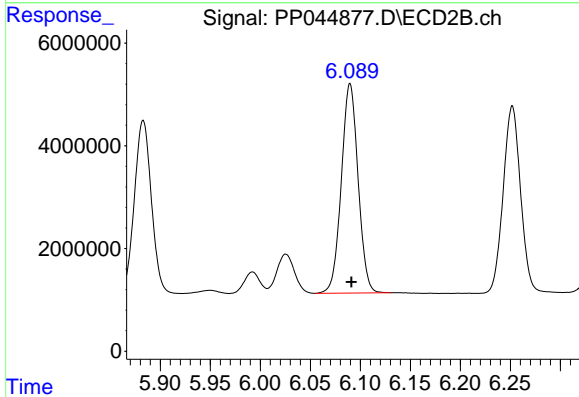
R.T.: 5.883 min
 Delta R.T.: 0.000 min
 Response: 40003748
 Conc: 568.15 ng/ml



#32 AR-1260-2

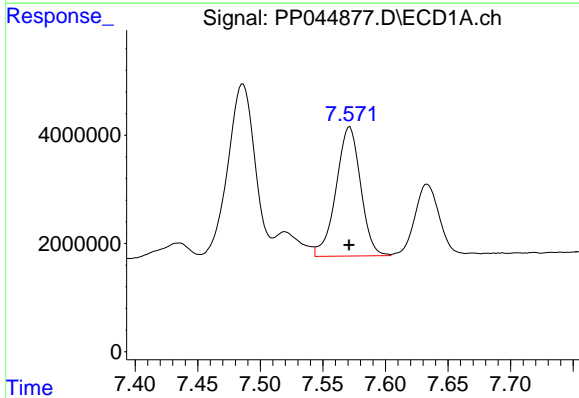
R.T.: 7.176 min
 Delta R.T.: 0.000 min
 Response: 40861903
 Conc: 526.30 ng/ml

Instrument :
 ECD_P
 ClientSampleId :
 AR1660CCC500



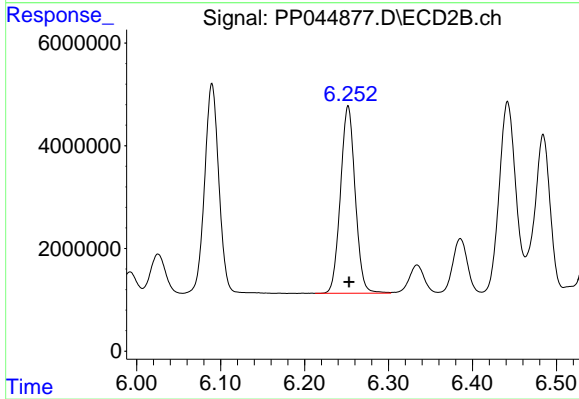
#32 AR-1260-2

R.T.: 6.090 min
 Delta R.T.: -0.001 min
 Response: 47550130
 Conc: 531.71 ng/ml



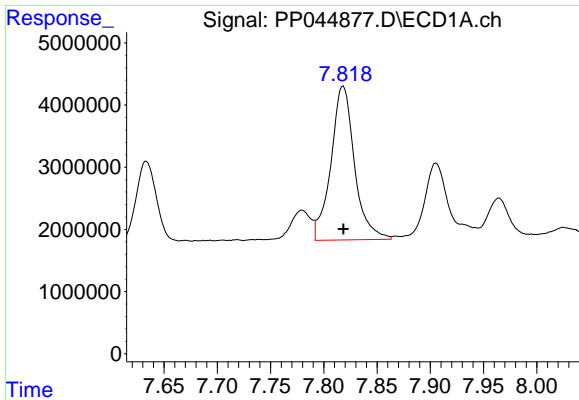
#33 AR-1260-3

R.T.: 7.571 min
 Delta R.T.: 0.000 min
 Response: 32680696
 Conc: 519.35 ng/ml



#33 AR-1260-3

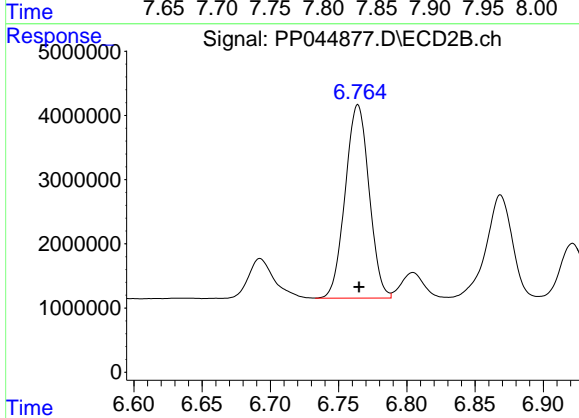
R.T.: 6.252 min
 Delta R.T.: 0.000 min
 Response: 44495410
 Conc: 522.44 ng/ml



#34 AR-1260-4

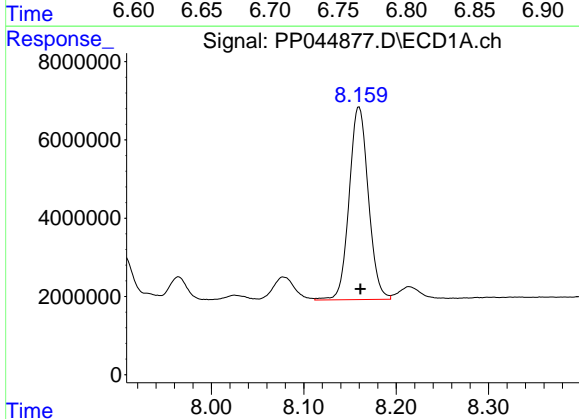
R.T.: 7.818 min
 Delta R.T.: 0.000 min
 Response: 38160235
 Conc: 520.21 ng/ml

Instrument :
 ECD_P
 ClientSampleId :
 AR1660CCC500



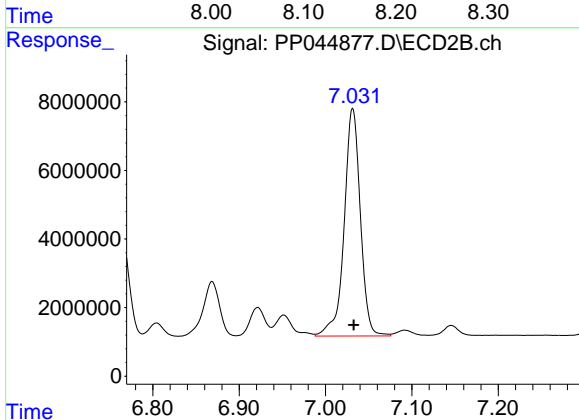
#34 AR-1260-4

R.T.: 6.764 min
 Delta R.T.: 0.000 min
 Response: 36738857
 Conc: 546.65 ng/ml



#35 AR-1260-5

R.T.: 8.160 min
 Delta R.T.: -0.001 min
 Response: 71126086
 Conc: 507.92 ng/ml



#35 AR-1260-5

R.T.: 7.032 min
 Delta R.T.: -0.001 min
 Response: 86462080
 Conc: 553.33 ng/ml