

Data Path : Z:\pestpcbsrv\HPCHEM1\ECD_P\Data\PP031925\
 Data File : PP070711.D
 Signal(s) : Signal #1: ECD1A.ch Signal #2: ECD2B.ch
 Acq On : 19 Mar 2025 18:52
 Operator : YP\AJ
 Sample : Q1597-05
 Misc :
 ALS Vial : 25 Sample Multiplier: 1

Instrument :
 ECD_P
ClientSampleId :
 3-CONCRETE-SLAB

Manual Integrations
APPROVED
 Reviewed By :Yogesh Patel 03/20/2025
 Supervised By :mohammad ahmed 03/24/2025

Integration File signal 1: autoint1.e
 Integration File signal 2: autoint2.e
 Quant Time: Mar 20 01:27:32 2025
 Quant Method : Z:\pestpcbsrv\HPCHEM1\ECD_P\methods\PP031125.M
 Quant Title : GC EXTRACTABLES
 QLast Update : Wed Mar 19 05:25:31 2025
 Response via : Initial Calibration
 Integrator: ChemStation

Volume Inj. : 2 µl
 Signal #1 Phase : ZB-MR1 Signal #2 Phase: ZB-MR2
 Signal #1 Info : 30Mx0.32mmx 0.50µ Signal #2 Info : 30M x 0.32mm x 0.25µm

Compound	RT#1	RT#2	Resp#1	Resp#2	ng/ml	ng/ml

System Monitoring Compounds						
1) SA Tetrachlo...	4.519	3.822	35880717	25213012	23.069m	25.156m
2) SA Decachlor...	10.239	8.869	24684903	19698119	23.236	20.134

Target Compounds

(f)=RT Delta > 1/2 Window (#)=Amounts differ by > 25% (m)=manual int.

Data Path : Z:\pestpcbsrv\HPCHEM1\ECD_P\Data\PP031925\
Data File : PP070711.D
Signal(s) : Signal #1: ECD1A.ch Signal #2: ECD2B.ch
Acq On : 19 Mar 2025 18:52
Operator : YP\AJ
Sample : Q1597-05
Misc :
ALS Vial : 25 Sample Multiplier: 1

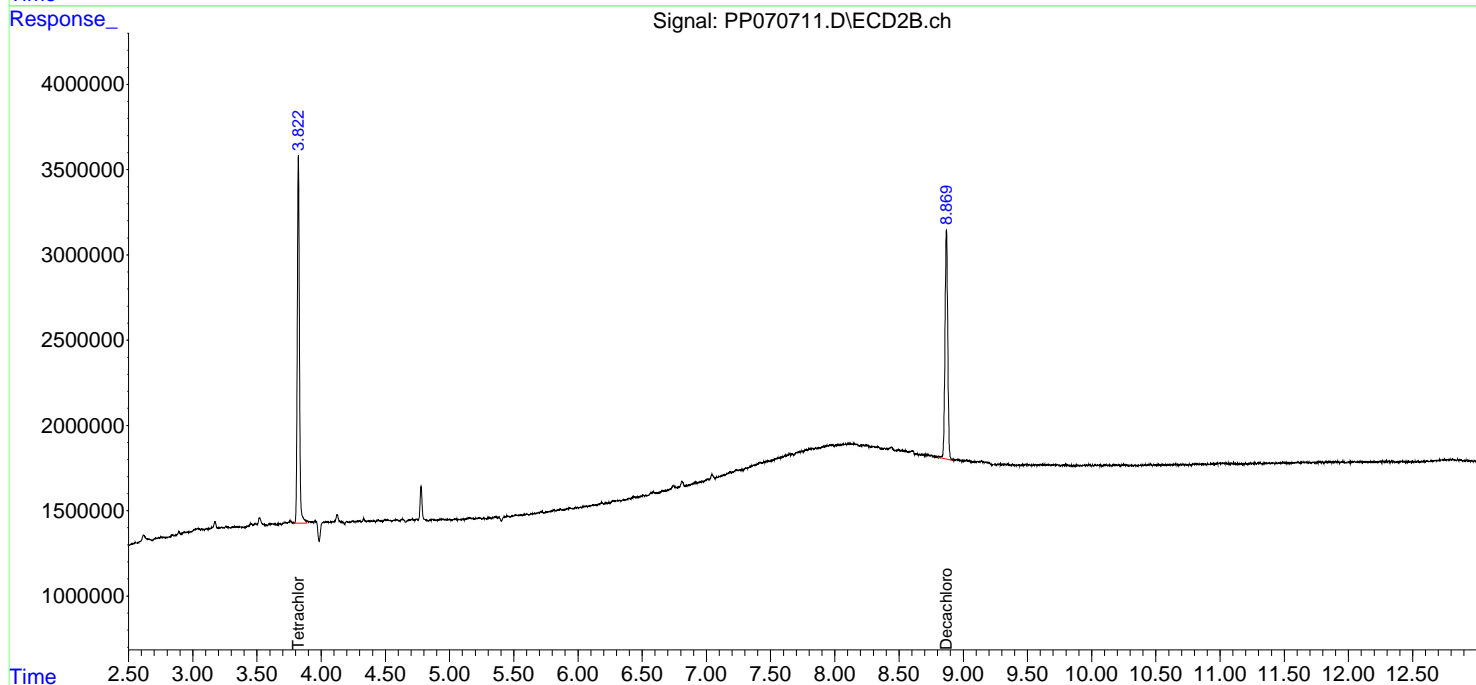
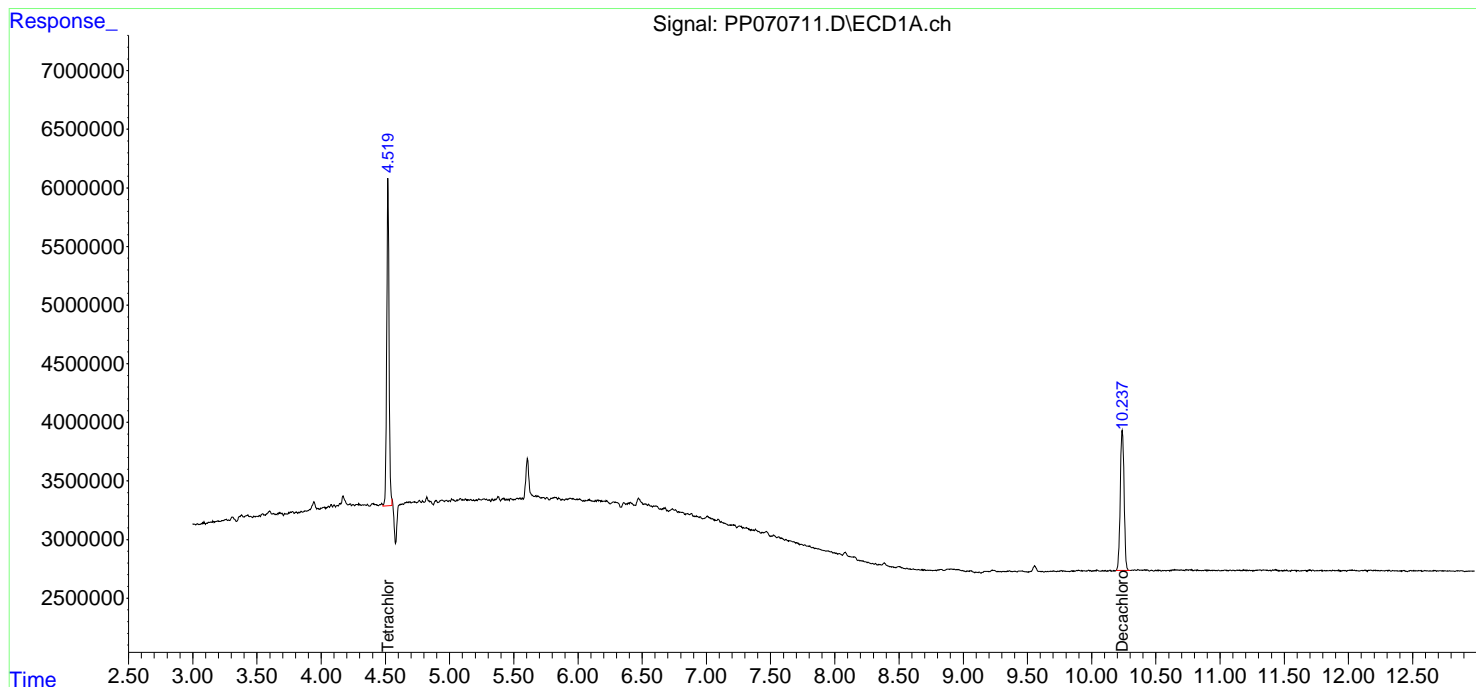
Instrument :
ECD_P
ClientSampleId :
3-CONCRETE-SLAB

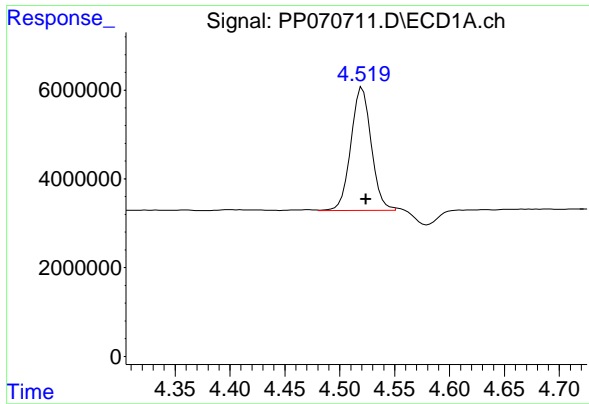
Manual Integrations
APPROVED

Reviewed By :Yogesh Patel 03/20/2025
Supervised By :mohammad ahmed 03/24/2025

Integration File signal 1: autoint1.e
Integration File signal 2: autoint2.e
Quant Time: Mar 20 01:27:32 2025
Quant Method : Z:\pestpcbsrv\HPCHEM1\ECD_P\methods\PP031125.M
Quant Title : GC EXTRACTABLES
QLast Update : Wed Mar 19 05:25:31 2025
Response via : Initial Calibration
Integrator: ChemStation

Volume Inj. : 2 µl
Signal #1 Phase : ZB-MR1 Signal #2 Phase: ZB-MR2
Signal #1 Info : 30Mx0.32mmx 0.50µm Signal #2 Info : 30M x 0.32mm x 0.25µm





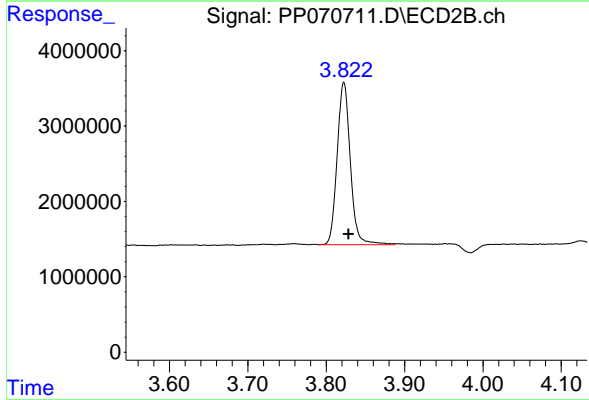
#1 Tetrachloro-m-xylene

R.T.: 4.519 min
 Delta R.T.: -0.005 min
 Response: 35880717
 Conc: 23.07 ng/ml

Instrument : ECD_P
 Client Sample Id : 3-CONCRETE-SLAB

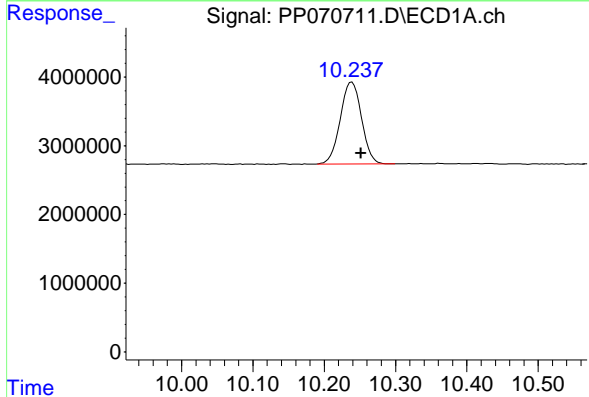
Manual Integrations
 APPROVED

Reviewed By :Yogesh Patel 03/20/2025
 Supervised By :mohammad ahmed 03/24/2025



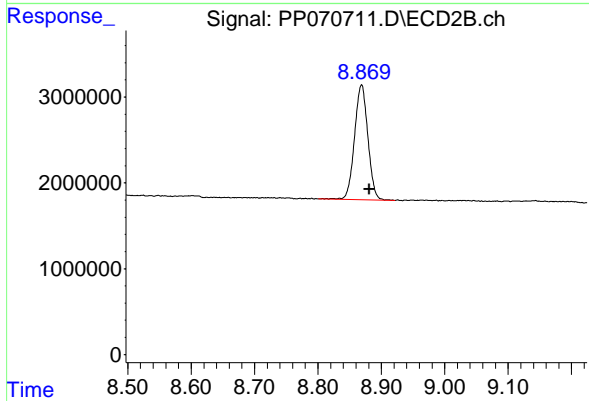
#1 Tetrachloro-m-xylene

R.T.: 3.822 min
 Delta R.T.: -0.007 min
 Response: 25213012
 Conc: 25.16 ng/ml m



#2 Decachlorobiphenyl

R.T.: 10.239 min
 Delta R.T.: -0.013 min
 Response: 24684903
 Conc: 23.24 ng/ml



#2 Decachlorobiphenyl

R.T.: 8.869 min
 Delta R.T.: -0.012 min
 Response: 19698119
 Conc: 20.13 ng/ml