

Data Path : Z:\pestpcbsrv\HPCHEM1\ECD_P\Data\PP032019\
 Data File : PP029440.D
 Signal(s) : Signal #1: ECD1A.CH Signal #2: ECD2B.CH
 Acq On : 20 Mar 2019 16:44
 Operator : EI\MA
 Sample : PB117994BS
 Misc : hexane
 ALS Vial : 5 Sample Multiplier: 1

Instrument :
 ECD_P
ClientSampleId :
 PB117994BS

Manual Integrations
APPROVED
 Sohil
 3/21/2019 2:18:14 PM

Integration File signal 1: autoint1.e
 Integration File signal 2: autoint2.e
 Quant Time: Mar 21 13:05:42 2019
 Quant Method : Z:\pestpcbsrv\HPCHEM1\ECD_P\methods\PP022119.M
 Quant Title : 8080.M
 QLast Update : Fri Feb 22 02:24:04 2019
 Response via : Initial Calibration
 Integrator: ChemStation 6890 Scale Mode: Large solvent peaks clipped

Volume Inj. : 2 µl
 Signal #1 Phase : ZB-CLPesticides-1 Signal #2 Phase: ZB-CLPesticides-2
 Signal #1 Info : 30M x 0.32mm x0.5 Signal #2 Info : 30M x 0.32mm x 0.25µm

	Compound	RT#1	RT#2	Resp#1	Resp#2	ng/ml	ng/ml

System Monitoring Compounds							
4) S	2,4-DCAA	11.928	12.124	17031725	22696760	566.660	598.031
Target Compounds							
1) T	Dalapon	3.240	2.955	27182065	21569539	464.028m	416.817m
2) T	3,5-DICHL...	10.337	10.210	29944464	24067944	485.443	474.873
3) T	4-Nitroph...	11.492	11.267	27330656	9280285	398.966	387.521m
5) T	DICAMBA	12.250	12.434	67773891	61368020	509.698	479.437m
8) T	DICHLORPROP	13.440	13.547	16846686	19806013	545.985	585.824
9) T	2,4-D	13.788	14.034	21385188	24381157	545.440	537.698
10) T	Pentachlo...	14.208	14.641	328.0E6	248.0E6	503.369	481.908
11) T	2,4,5-TP ...	15.064	15.212	121.7E6	100.5E6	512.793	494.136
12) T	2,4,5-T	15.452	15.861	107.4E6	78840485	508.705	476.168
13) T	2,4-DB	16.208	16.456	10890378	13100042	570.107m	581.537
14) T	DINOSEB	17.674	16.847	81088774	67386300	556.811	514.116
15) T	Picloram	17.462	18.242	145.7E6	108.6E6	523.916	482.423m
16) T	DCPA	18.056	18.116	110.8E6	89206333	392.411	383.854m

(f)=RT Delta > 1/2 Window (#)=Amounts differ by > 25% (m)=manual int.

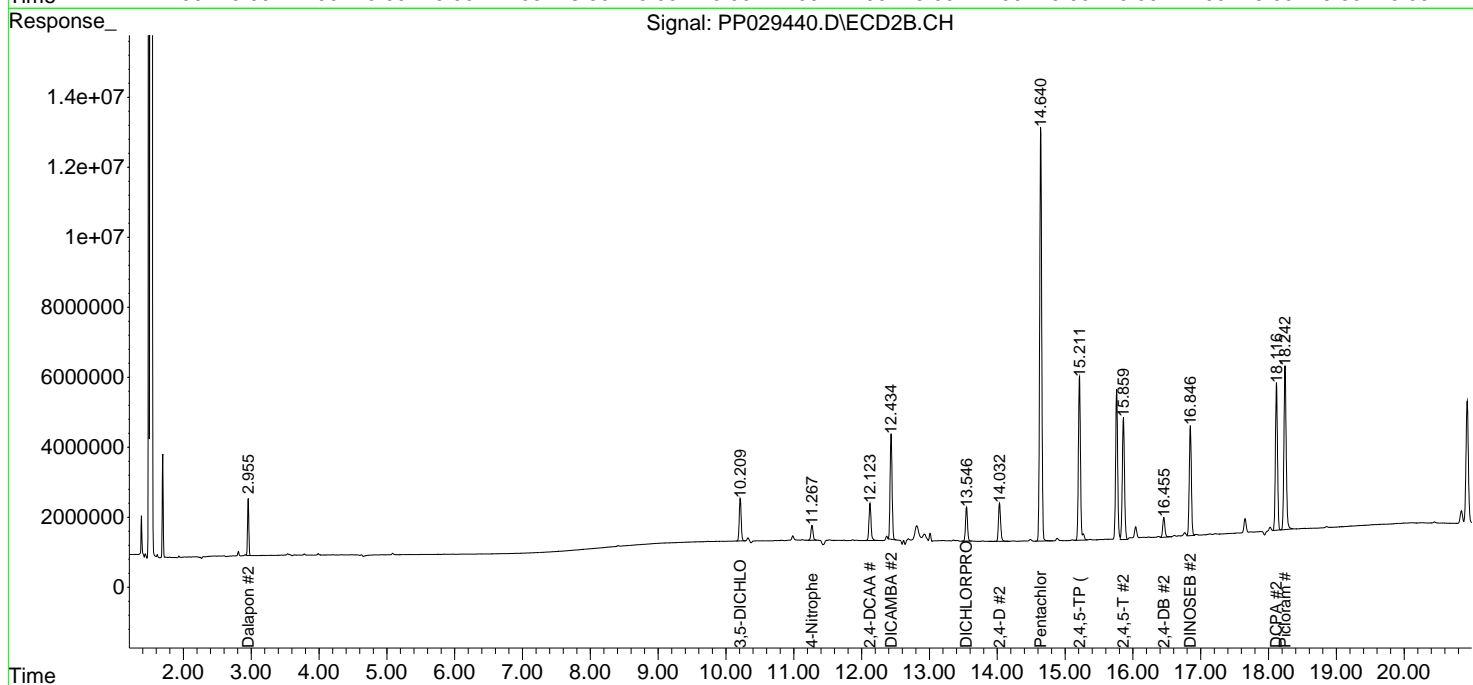
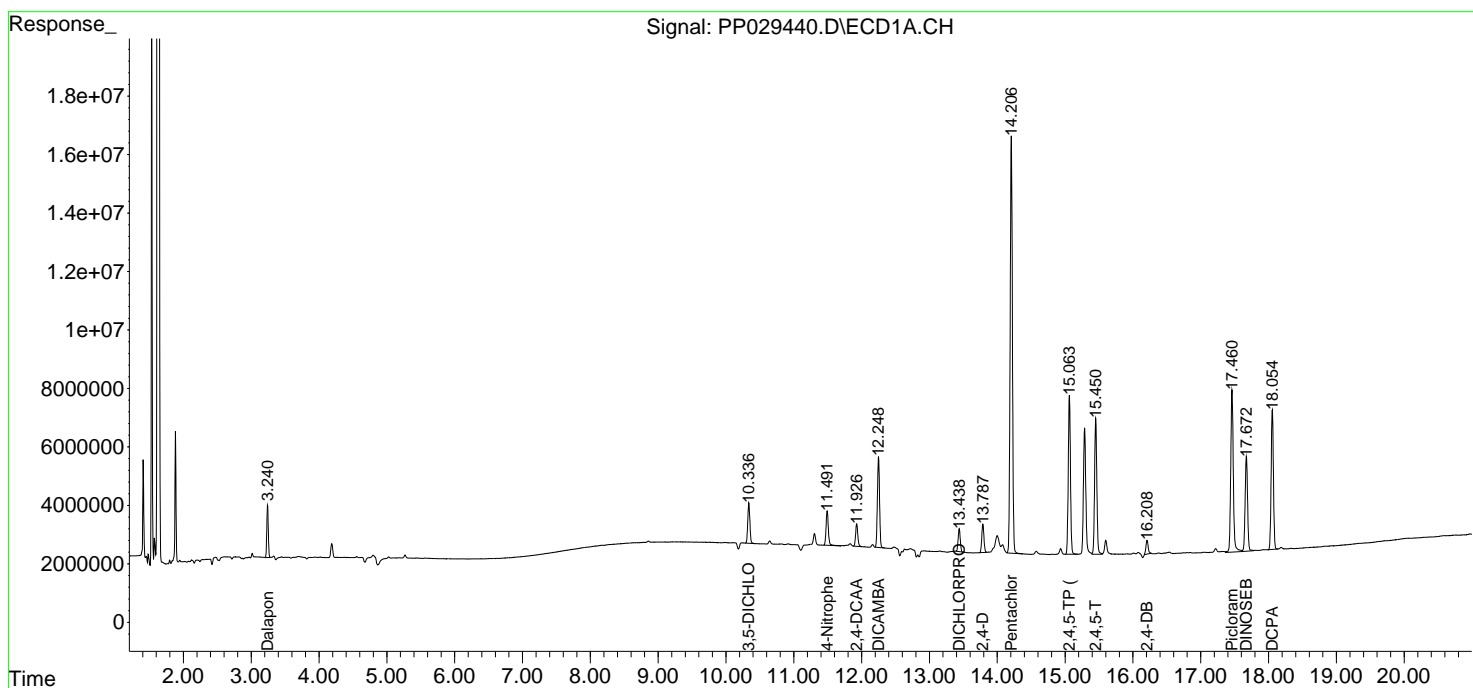
Data Path : Z:\pestpcbsrv\HPCHEM1\ECD_P\Data\PP032019\
 Data File : PP029440.D
 Signal(s) : Signal #1: ECD1A.CH Signal #2: ECD2B.CH
 Acq On : 20 Mar 2019 16:44
 Operator : EI\MA
 Sample : PB117994BS
 Misc : hexane
 ALS Vial : 5 Sample Multiplier: 1

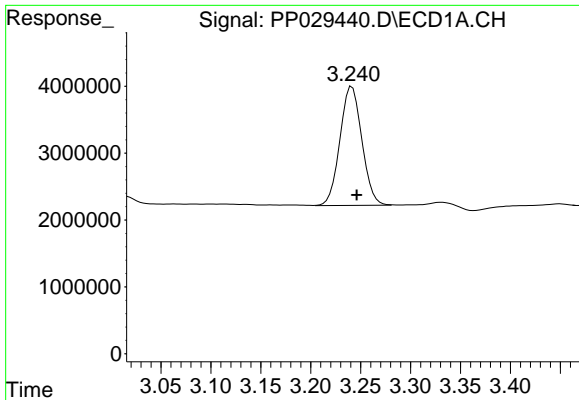
Instrument :
 ECD_P
Client Sampled :
 PB117994BS

Manual Integrations
APPROVED
 Sohil
 3/21/2019 2:18:14 PM

Integration File signal 1: autoint1.e
 Integration File signal 2: autoint2.e
 Quant Time: Mar 21 13:05:42 2019
 Quant Method : Z:\pestpcbsrv\HPCHEM1\ECD_P\methods\PP022119.M
 Quant Title : 8080.M
 QLast Update : Fri Feb 22 02:24:04 2019
 Response via : Initial Calibration
 Integrator: ChemStation 6890 Scale Mode: Large solvent peaks clipped

Volume Inj. : 2 µl
 Signal #1 Phase : ZB-CLPesticides-1 Signal #2 Phase: ZB-CLPesticides-2
 Signal #1 Info : 30M x 0.32mm x0.5 Signal #2 Info : 30M x 0.32mm x 0.25µm

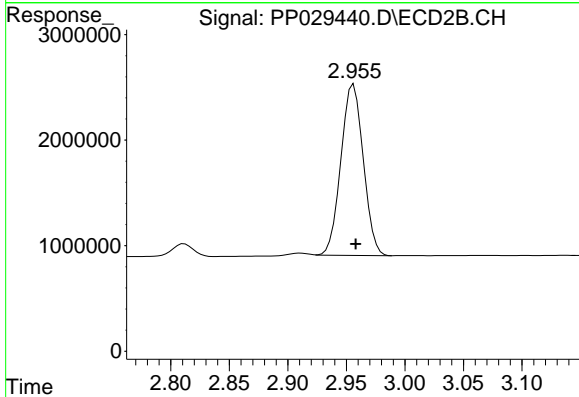




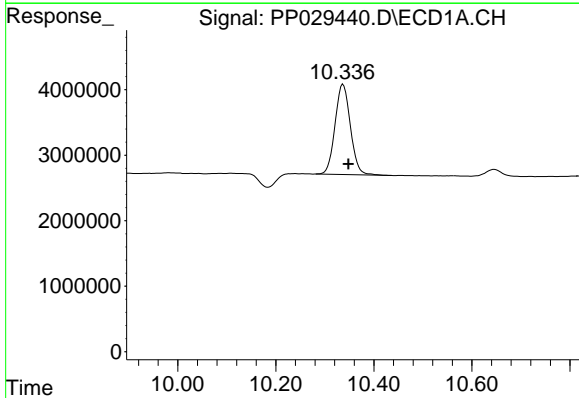
#1 Dalapon
 R.T.: 3.240 min
 Delta R.T.: -0.006 min
 Response: 27182065
 Conc: 464.03 ng/ml m

Instrument :
 ECD_P
 ClientSampled :
 PB117994BS

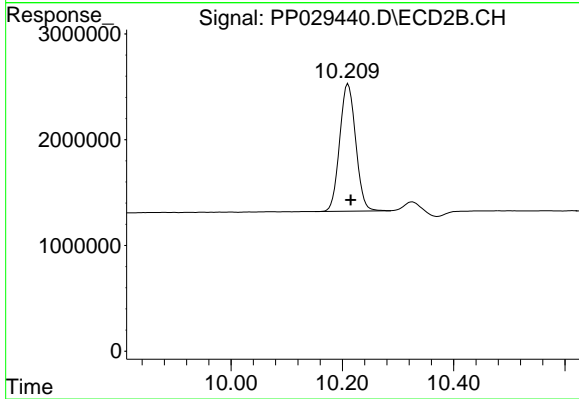
Manual Integrations
 APPROVED
 Sohil
 3/21/2019 2:18:14 PM



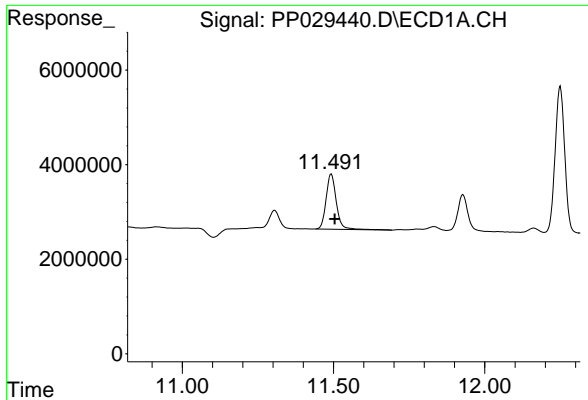
#1 Dalapon
 R.T.: 2.955 min
 Delta R.T.: -0.003 min
 Response: 21569539
 Conc: 416.82 ng/ml m



#2 3,5-DICHLOROBENZOIC ACID
 R.T.: 10.337 min
 Delta R.T.: -0.011 min
 Response: 29944464
 Conc: 485.44 ng/ml



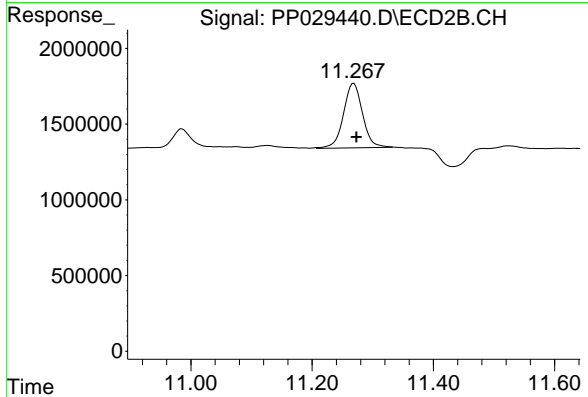
#2 3,5-DICHLOROBENZOIC ACID
 R.T.: 10.210 min
 Delta R.T.: -0.005 min
 Response: 24067944
 Conc: 474.87 ng/ml



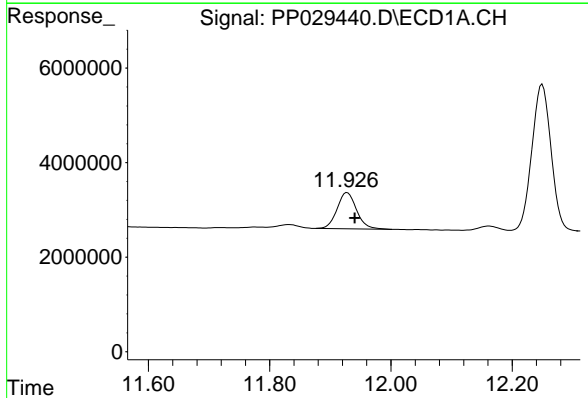
#3 4-Nitrophenol
 R.T.: 11.492 min
 Delta R.T.: -0.011 min
 Response: 27330656
 Conc: 398.97 ng/ml

Instrument :
 ECD_P
 ClientSampleId :
 PB117994BS

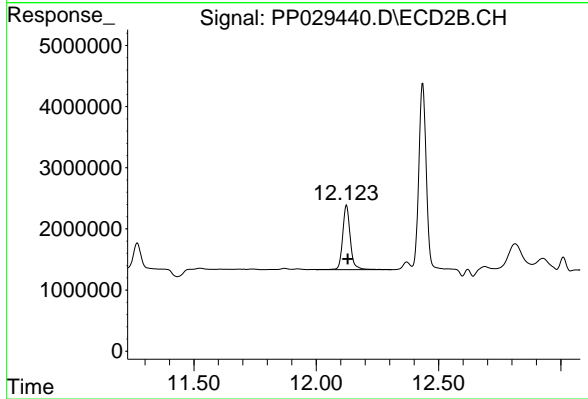
Manual Integrations
APPROVED
 Sohil
 3/21/2019 2:18:14 PM



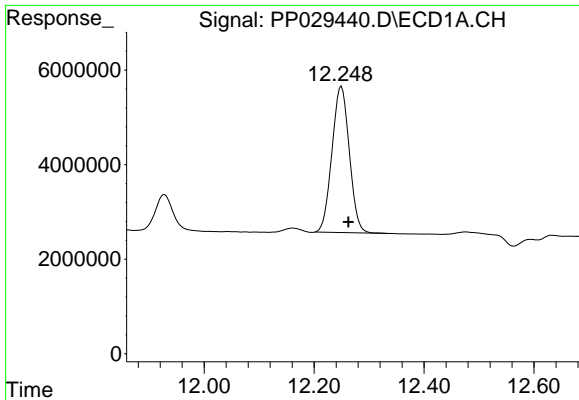
#3 4-Nitrophenol
 R.T.: 11.267 min
 Delta R.T.: -0.006 min
 Response: 9280285
 Conc: 387.52 ng/ml m



#4 2,4-DCAA
 R.T.: 11.928 min
 Delta R.T.: -0.012 min
 Response: 17031725
 Conc: 566.66 ng/ml



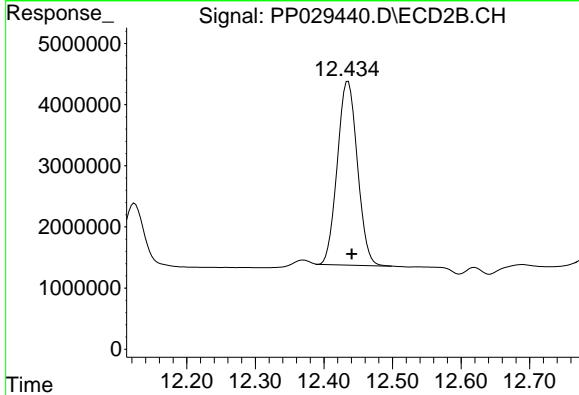
#4 2,4-DCAA
 R.T.: 12.124 min
 Delta R.T.: -0.005 min
 Response: 22696760
 Conc: 598.03 ng/ml



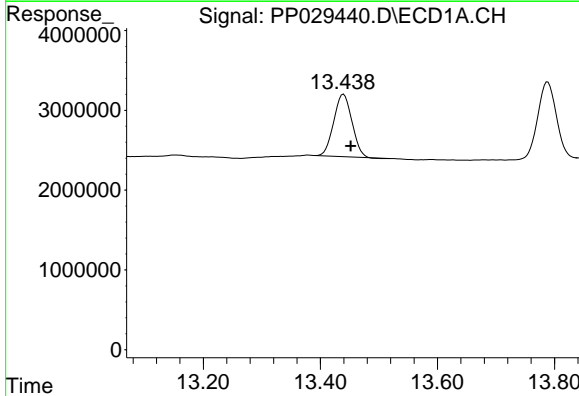
#5 DICAMBA
 R.T.: 12.250 min
 Delta R.T.: -0.013 min
 Response: 67773891
 Conc: 509.70 ng/ml

Instrument :
 ECD_P
 ClientSampled :
 PB117994BS

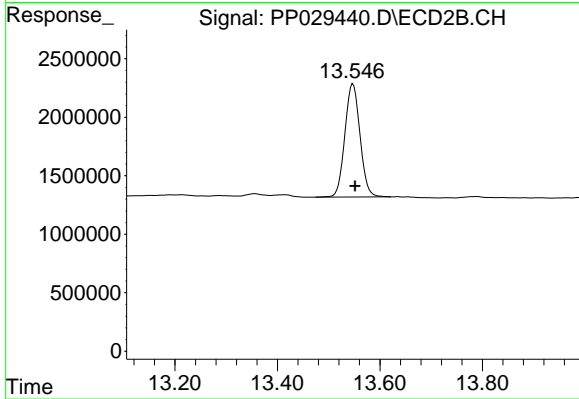
Manual Integrations
 APPROVED
 Sohil
 3/21/2019 2:18:14 PM



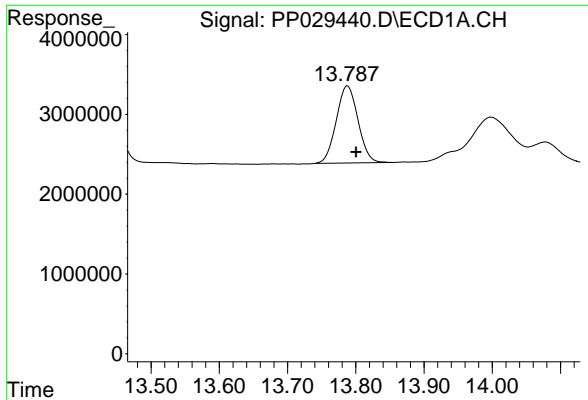
#5 DICAMBA
 R.T.: 12.434 min
 Delta R.T.: -0.007 min
 Response: 61368020
 Conc: 479.44 ng/ml m



#8 DICHLORPROP
 R.T.: 13.440 min
 Delta R.T.: -0.012 min
 Response: 16846686
 Conc: 545.99 ng/ml



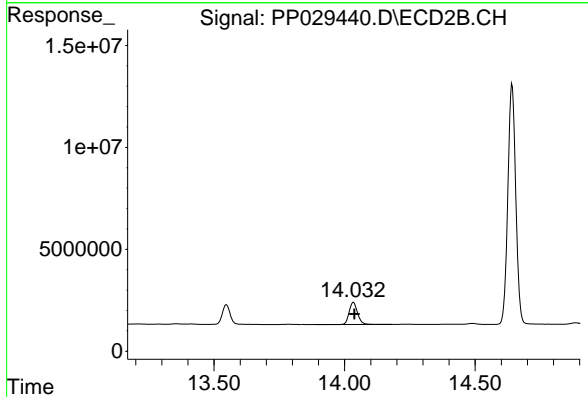
#8 DICHLORPROP
 R.T.: 13.547 min
 Delta R.T.: -0.004 min
 Response: 19806013
 Conc: 585.82 ng/ml



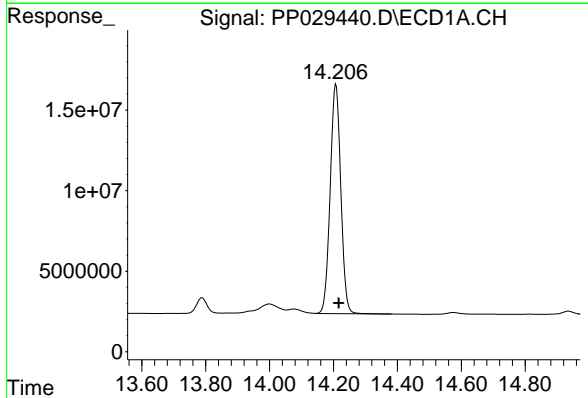
#9 2,4-D
 R.T.: 13.788 min
 Delta R.T.: -0.012 min
 Response: 21385188
 Conc: 545.44 ng/ml

Instrument :
 ECD_P
ClientSampled :
 PB117994BS

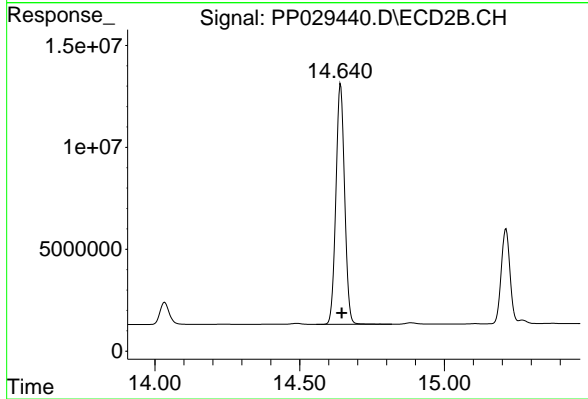
Manual Integrations
APPROVED
 Sohil
 3/21/2019 2:18:14 PM



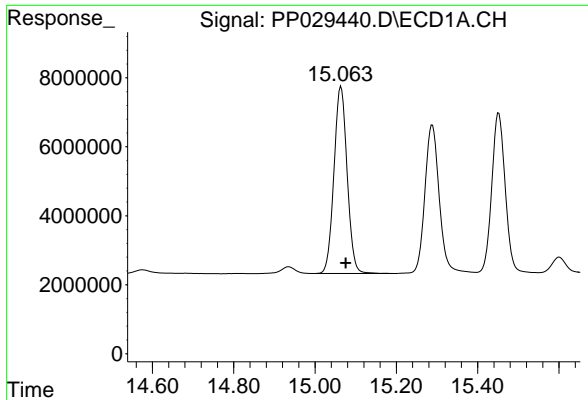
#9 2,4-D
 R.T.: 14.034 min
 Delta R.T.: -0.005 min
 Response: 24381157
 Conc: 537.70 ng/ml



#10 Pentachlorophenol
 R.T.: 14.208 min
 Delta R.T.: -0.009 min
 Response: 328011798
 Conc: 503.37 ng/ml



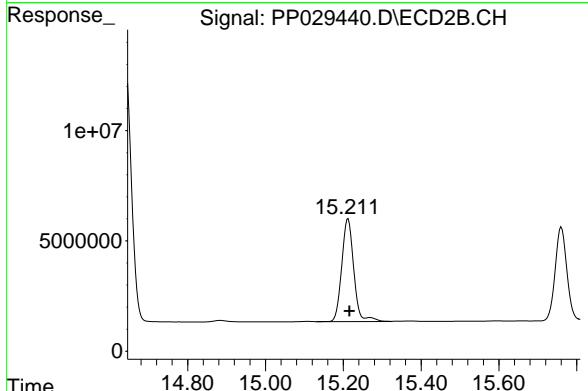
#10 Pentachlorophenol
 R.T.: 14.641 min
 Delta R.T.: -0.004 min
 Response: 248021953
 Conc: 481.91 ng/ml



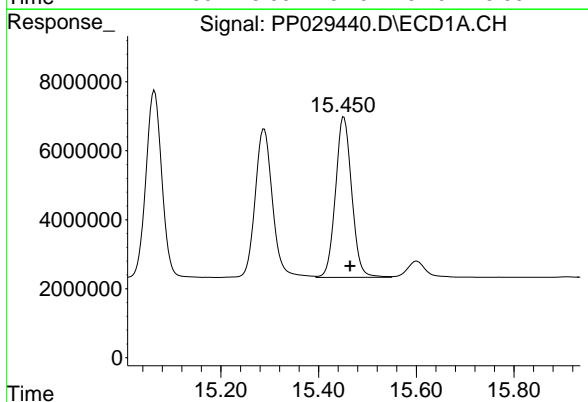
#11 2,4,5-TP (SILVEX)
 R.T.: 15.064 min
 Delta R.T.: -0.011 min
 Response: 121656022
 Conc: 512.79 ng/ml

Instrument :
 ECD_P
ClientSampled :
 PB117994BS

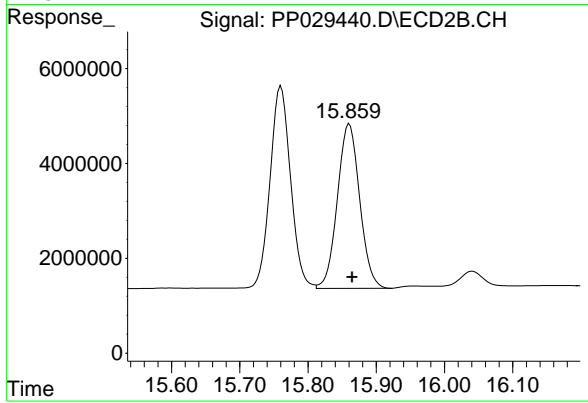
Manual Integrations
APPROVED
 Sohil
 3/21/2019 2:18:14 PM



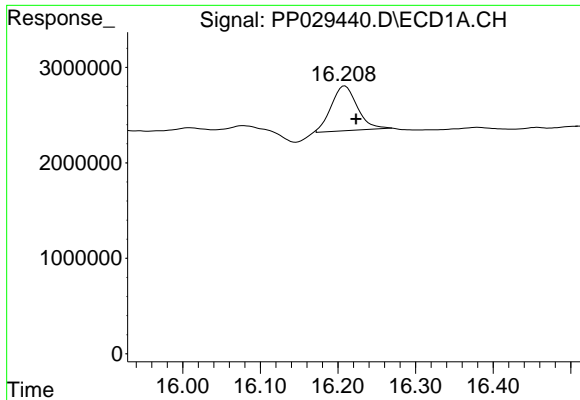
#11 2,4,5-TP (SILVEX)
 R.T.: 15.212 min
 Delta R.T.: -0.003 min
 Response: 100510650
 Conc: 494.14 ng/ml



#12 2,4,5-T
 R.T.: 15.452 min
 Delta R.T.: -0.012 min
 Response: 107394867
 Conc: 508.70 ng/ml



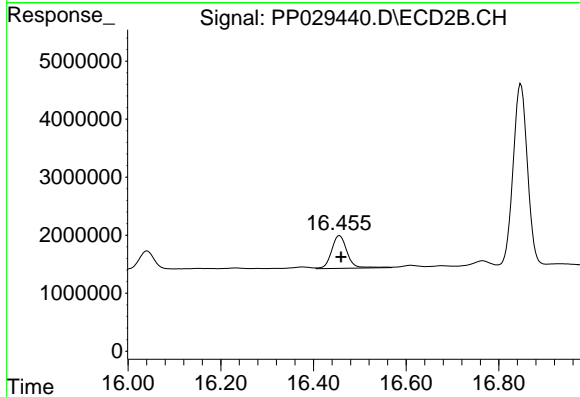
#12 2,4,5-T
 R.T.: 15.861 min
 Delta R.T.: -0.004 min
 Response: 78840485
 Conc: 476.17 ng/ml



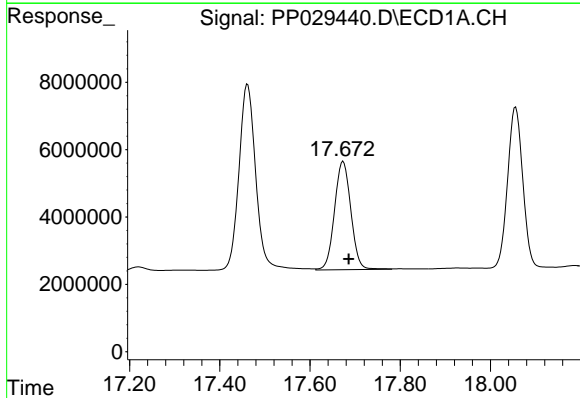
#13 2,4-DB
 R.T.: 16.208 min
 Delta R.T.: -0.016 min
 Response: 10890378
 Conc: 570.11 ng/ml m

Instrument :
 ECD_P
ClientSampled :
 PB117994BS

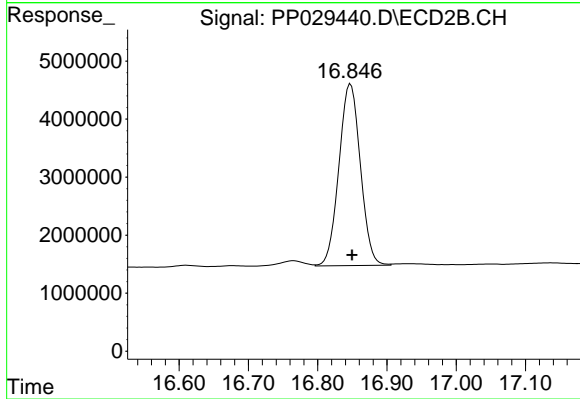
Manual Integrations
APPROVED
 Sohil
 3/21/2019 2:18:14 PM



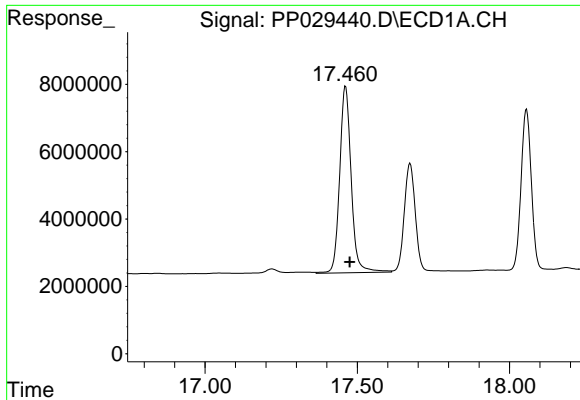
#13 2,4-DB
 R.T.: 16.456 min
 Delta R.T.: -0.003 min
 Response: 13100042
 Conc: 581.54 ng/ml



#14 DINOSEB
 R.T.: 17.674 min
 Delta R.T.: -0.012 min
 Response: 81088774
 Conc: 556.81 ng/ml



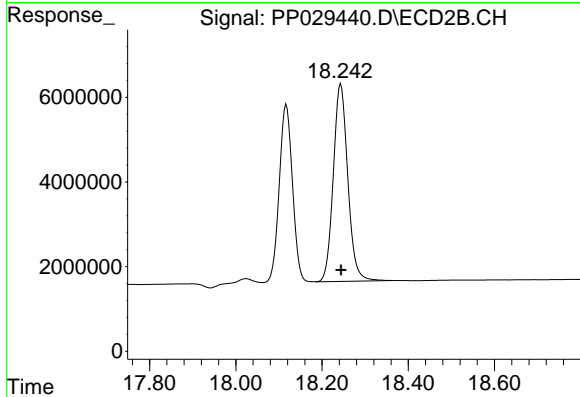
#14 DINOSEB
 R.T.: 16.847 min
 Delta R.T.: -0.002 min
 Response: 67386300
 Conc: 514.12 ng/ml



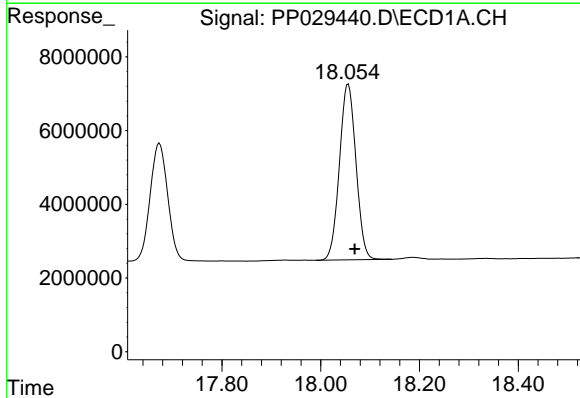
#15 Picloram
 R.T.: 17.462 min
 Delta R.T.: -0.014 min
 Response: 145674828
 Conc: 523.92 ng/ml

Instrument :
 ECD_P
 ClientSampled :
 PB117994BS

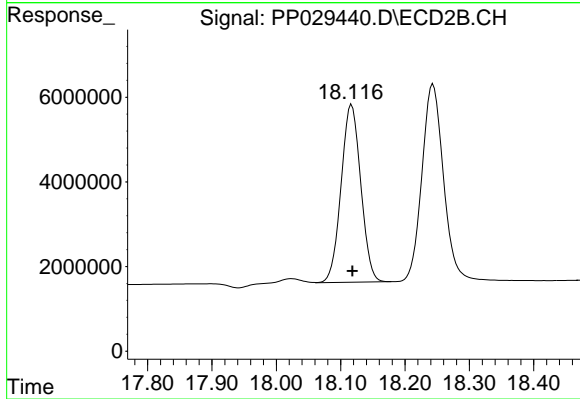
Manual Integrations
 APPROVED
 Sohil
 3/21/2019 2:18:14 PM



#15 Picloram
 R.T.: 18.242 min
 Delta R.T.: -0.003 min
 Response: 108556254
 Conc: 482.42 ng/ml m



#16 DCPA
 R.T.: 18.056 min
 Delta R.T.: -0.013 min
 Response: 110847402
 Conc: 392.41 ng/ml



#16 DCPA
 R.T.: 18.116 min
 Delta R.T.: -0.003 min
 Response: 89206333
 Conc: 383.85 ng/ml m