

Data Path : Z:\pestpcbsrv\HPCHEM1\ECD_P\Data\PP032025\
 Data File : PP070771.D
 Signal(s) : Signal #1: ECD1A.ch Signal #2: ECD2B.ch
 Acq On : 20 Mar 2025 22:27
 Operator : YP\AJ
 Sample : AR1660CCC500
 Misc :
 ALS Vial : 3 Sample Multiplier: 1

Instrument :
 ECD_P
ClientSampleId :
 AR1660CCC500

Manual Integrations
APPROVED

Reviewed By :Yogesh Patel 03/21/2025
 Supervised By :mohammad ahmed 03/24/2025

Integration File signal 1: autoint1.e
 Integration File signal 2: autoint2.e
 Quant Time: Mar 21 04:20:41 2025
 Quant Method : Z:\pestpcbsrv\HPCHEM1\ECD_P\methods\PP031125.M
 Quant Title : GC EXTRACTABLES
 QLast Update : Wed Mar 19 05:25:31 2025
 Response via : Initial Calibration
 Integrator: ChemStation

Volume Inj. : 2 µl
 Signal #1 Phase : ZB-MR1 Signal #2 Phase: ZB-MR2
 Signal #1 Info : 30Mx0.32mmx 0.50µ Signal #2 Info : 30M x 0.32mm x 0.25µm

Compound	RT#1	RT#2	Resp#1	Resp#2	ng/ml	ng/ml

System Monitoring Compounds						
1) SA Tetrachlo...	4.521	3.823	79186777	54643870	50.911	54.520
2) SA Decachlor...	10.244	8.870	54921469	46266320	51.698	47.290
Target Compounds						
3) L1 AR-1016-1	5.673	4.909	24941519	18843971	481.021	524.135
4) L1 AR-1016-2	5.695	4.928	37502765	26641705	524.186	512.669
5) L1 AR-1016-3	5.758	5.105	22218049	14858977	487.902	522.222
6) L1 AR-1016-4	5.855	5.147	18489057	11468249	473.620	512.206
7) L1 AR-1016-5	6.148	5.362	17044743	16844322	492.309	566.789
31) L7 AR-1260-1	7.265	6.399	33794354	25719590	575.339m	516.620
32) L7 AR-1260-2	7.519	6.587	47308439	32897731	576.630m	497.791
33) L7 AR-1260-3	7.879	6.741	38145343	28586454	580.090	499.786
34) L7 AR-1260-4	8.103	7.213	35138545	24225911	537.757	473.500
35) L7 AR-1260-5	8.423	7.454	72902905	60492678	533.393	469.717

(f)=RT Delta > 1/2 Window (#)=Amounts differ by > 25% (m)=manual int.

Data Path : Z:\pestpcbsrv\HPCHEM1\ECD_P\Data\PP032025\
 Data File : PP070771.D
 Signal(s) : Signal #1: ECD1A.ch Signal #2: ECD2B.ch
 Acq On : 20 Mar 2025 22:27
 Operator : YP\AJ
 Sample : AR1660CCC500
 Misc :
 ALS Vial : 3 Sample Multiplier: 1

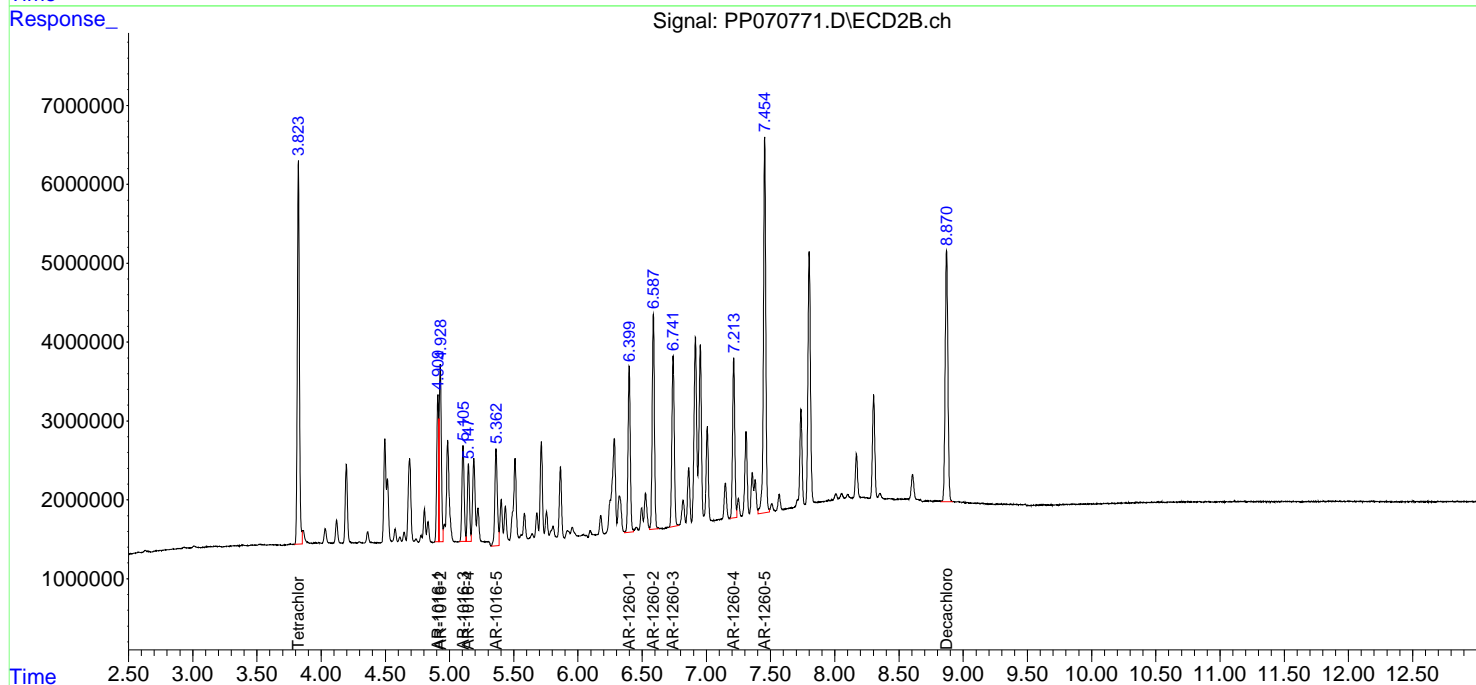
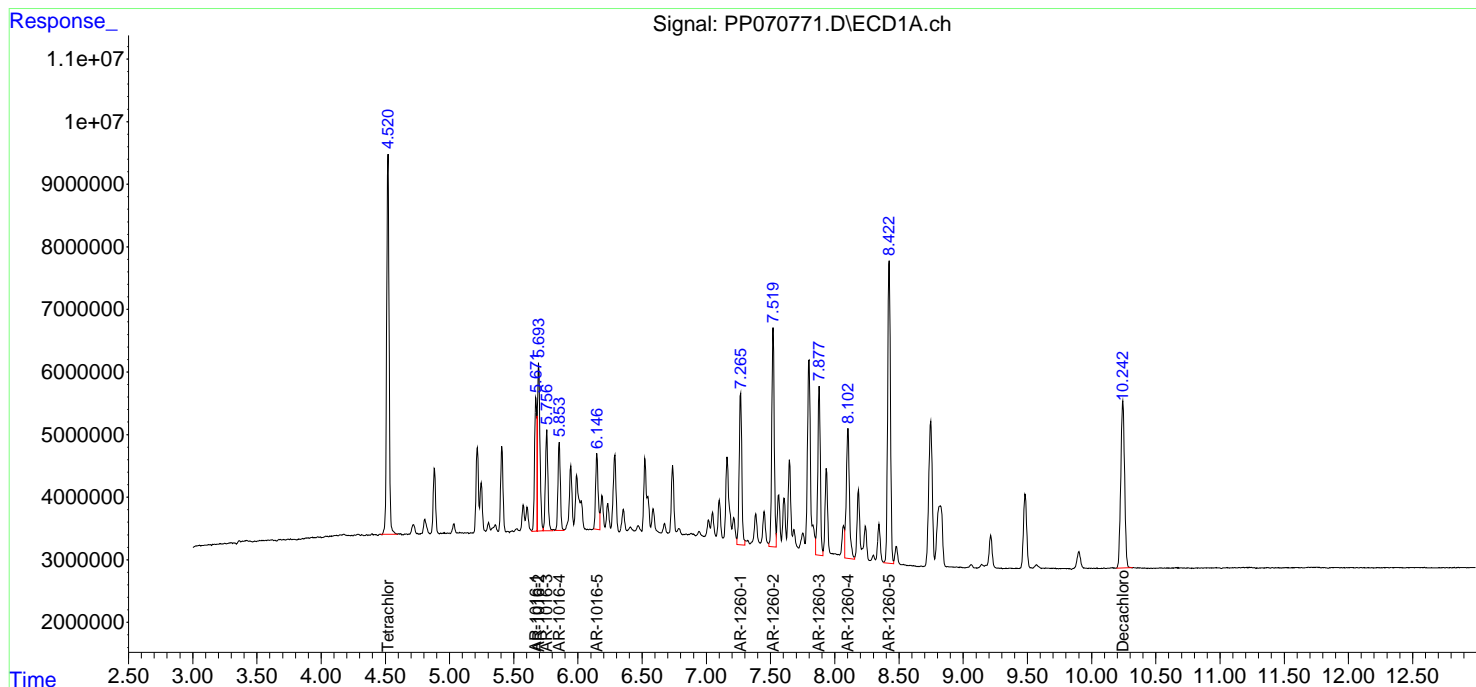
Instrument :
 ECD_P
ClientSampleId :
 AR1660CCC500

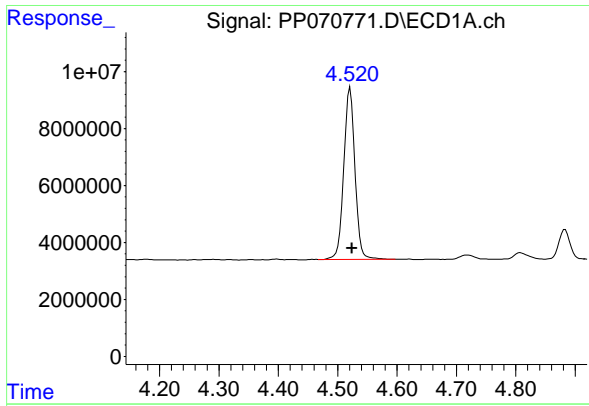
Manual Integrations
APPROVED

Reviewed By :Yogesh Patel 03/21/2025
 Supervised By :mohammad ahmed 03/24/2025

Integration File signal 1: autoint1.e
 Integration File signal 2: autoint2.e
 Quant Time: Mar 21 04:20:41 2025
 Quant Method : Z:\pestpcbsrv\HPCHEM1\ECD_P\methods\PP031125.M
 Quant Title : GC EXTRACTABLES
 QLast Update : Wed Mar 19 05:25:31 2025
 Response via : Initial Calibration
 Integrator: ChemStation

Volume Inj. : 2 µl
 Signal #1 Phase : ZB-MR1 Signal #2 Phase: ZB-MR2
 Signal #1 Info : 30Mx0.32mmx 0.50µ Signal #2 Info : 30M x 0.32mm x 0.25µm





#1 Tetrachloro-m-xylene

R.T.: 4.521 min
 Delta R.T.: -0.003 min
 Response: 79186777
 Conc: 50.91 ng/ml

Instrument :

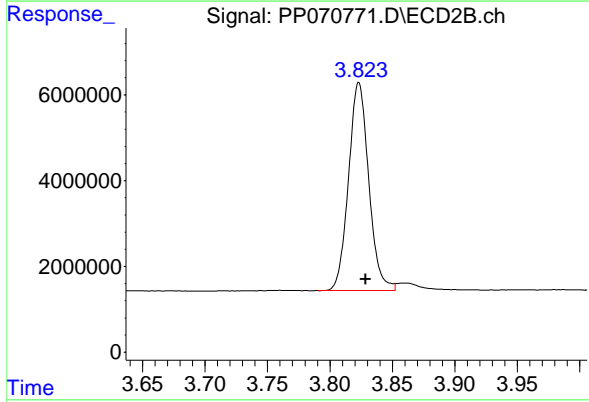
ECD_P

ClientSampleId :

AR1660CCC500

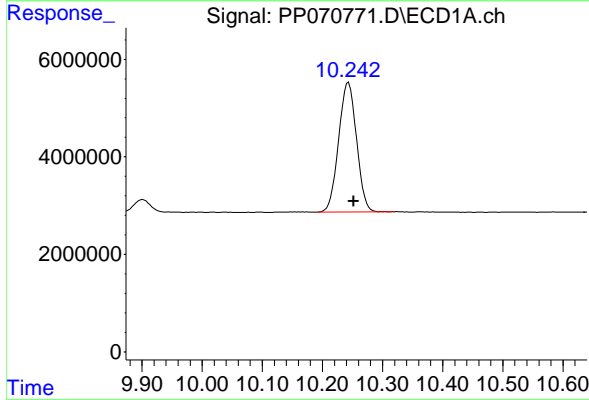
Manual Integrations
 APPROVED

Reviewed By :Yogesh Patel 03/21/2025
 Supervised By :mohammad ahmed 03/24/2025



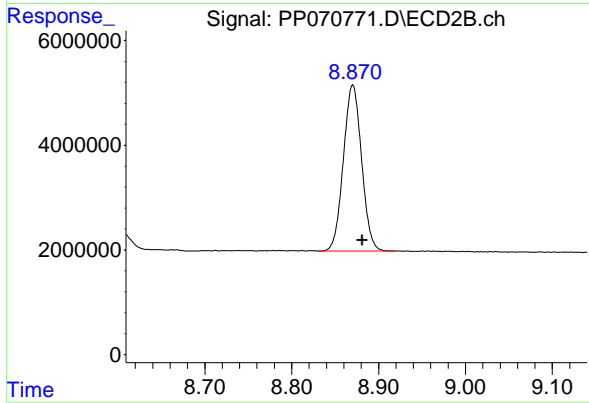
#1 Tetrachloro-m-xylene

R.T.: 3.823 min
 Delta R.T.: -0.006 min
 Response: 54643870
 Conc: 54.52 ng/ml



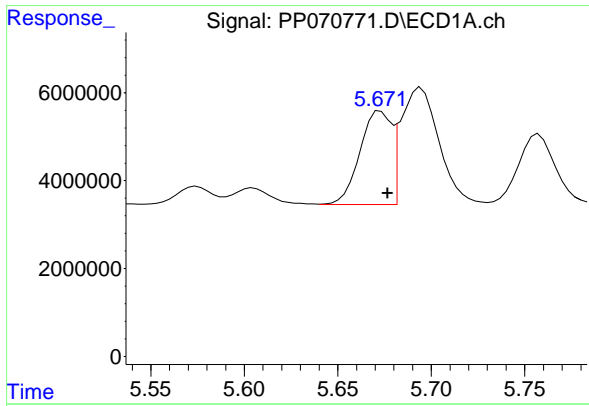
#2 Decachlorobiphenyl

R.T.: 10.244 min
 Delta R.T.: -0.008 min
 Response: 54921469
 Conc: 51.70 ng/ml



#2 Decachlorobiphenyl

R.T.: 8.870 min
 Delta R.T.: -0.011 min
 Response: 46266320
 Conc: 47.29 ng/ml



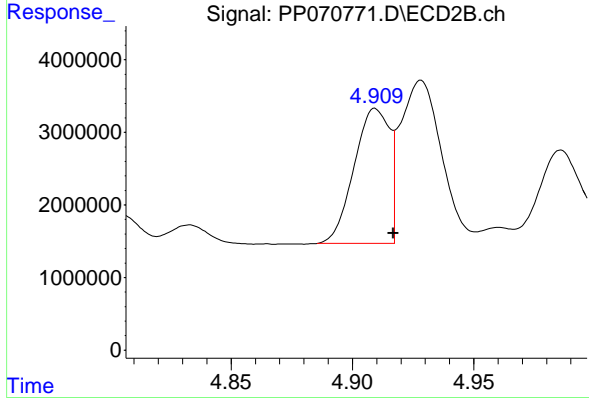
#3 AR-1016-1

R.T.: 5.673 min
 Delta R.T.: -0.004 min
 Response: 24941519
 Conc: 481.02 ng/ml

Instrument : ECD_P
 ClientSampleId : AR1660CCC500

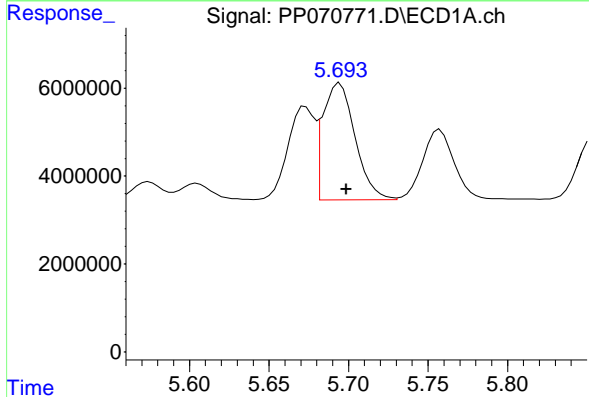
Manual Integrations
 APPROVED

Reviewed By :Yogesh Patel 03/21/2025
 Supervised By :mohammad ahmed 03/24/2025



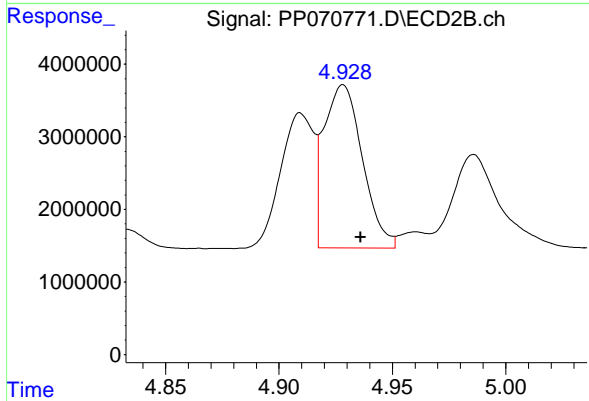
#3 AR-1016-1

R.T.: 4.909 min
 Delta R.T.: -0.007 min
 Response: 18843971
 Conc: 524.13 ng/ml



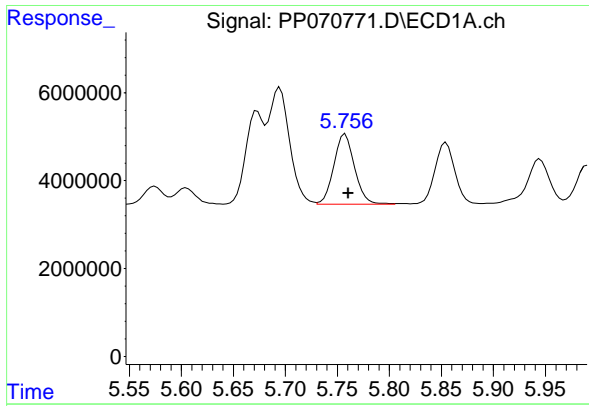
#4 AR-1016-2

R.T.: 5.695 min
 Delta R.T.: -0.004 min
 Response: 37502765
 Conc: 524.19 ng/ml



#4 AR-1016-2

R.T.: 4.928 min
 Delta R.T.: -0.008 min
 Response: 26641705
 Conc: 512.67 ng/ml



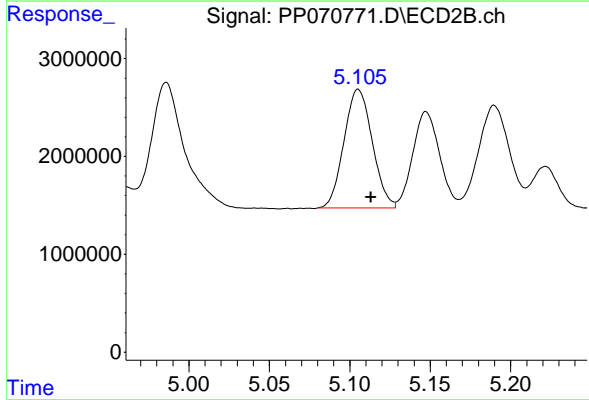
#5 AR-1016-3

R.T.: 5.758 min
 Delta R.T.: -0.003 min
 Response: 22218049
 Conc: 487.90 ng/ml

Instrument : ECD_P
 ClientSampleId : AR1660CCC500

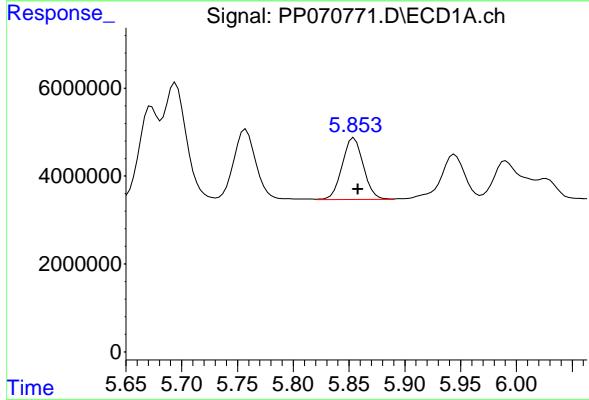
Manual Integrations
 APPROVED

Reviewed By :Yogesh Patel 03/21/2025
 Supervised By :mohammad ahmed 03/24/2025



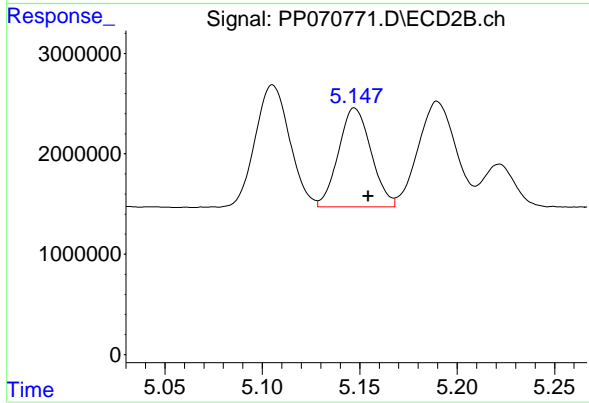
#5 AR-1016-3

R.T.: 5.105 min
 Delta R.T.: -0.008 min
 Response: 14858977
 Conc: 522.22 ng/ml



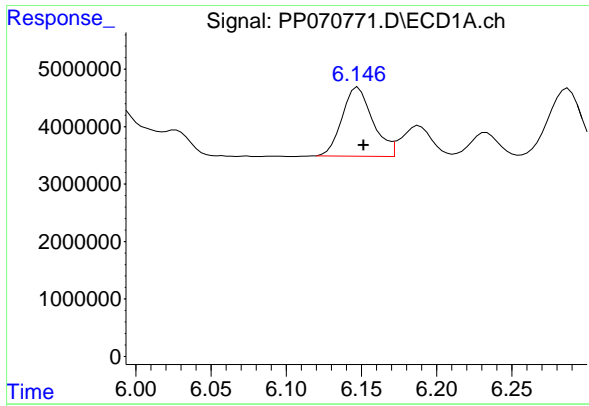
#6 AR-1016-4

R.T.: 5.855 min
 Delta R.T.: -0.003 min
 Response: 18489057
 Conc: 473.62 ng/ml



#6 AR-1016-4

R.T.: 5.147 min
 Delta R.T.: -0.007 min
 Response: 11468249
 Conc: 512.21 ng/ml



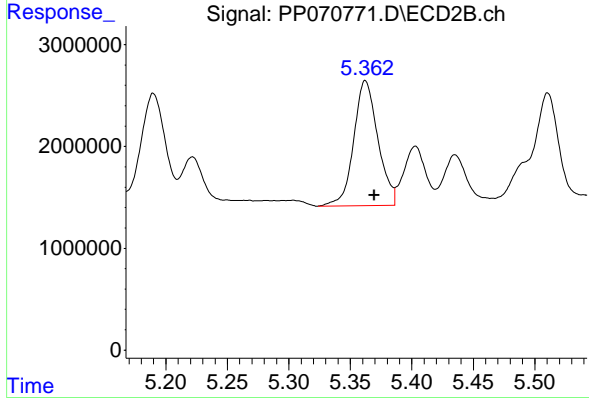
#7 AR-1016-5

R.T.: 6.148 min
 Delta R.T.: -0.004 min
 Response: 17044743
 Conc: 492.31 ng/ml

Instrument : ECD_P
 ClientSampleId : AR1660CCC500

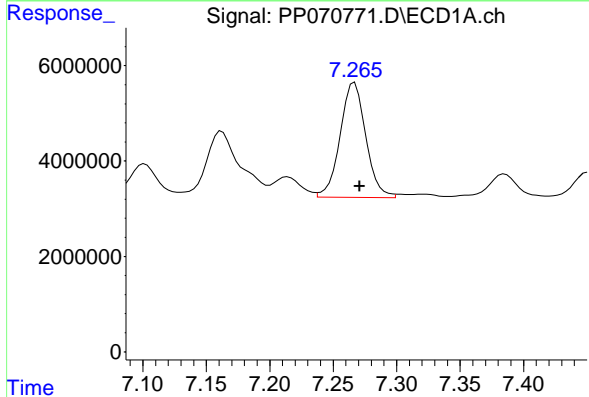
Manual Integrations
 APPROVED

Reviewed By :Yogesh Patel 03/21/2025
 Supervised By :mohammad ahmed 03/24/2025



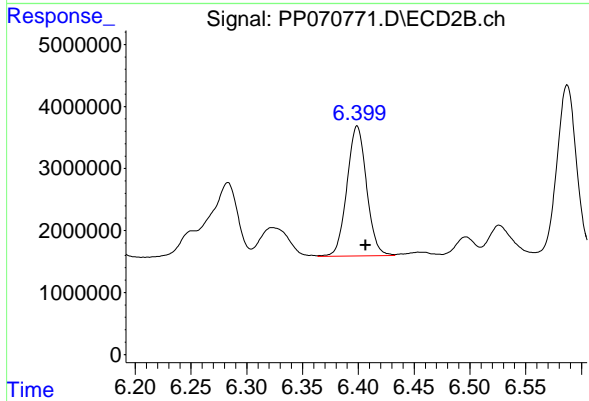
#7 AR-1016-5

R.T.: 5.362 min
 Delta R.T.: -0.007 min
 Response: 16844322
 Conc: 566.79 ng/ml



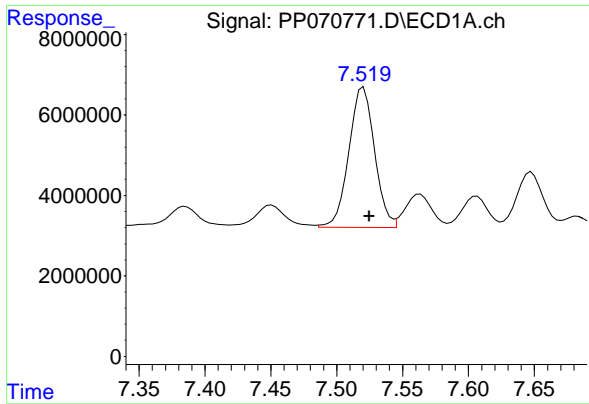
#31 AR-1260-1

R.T.: 7.265 min
 Delta R.T.: -0.005 min
 Response: 33794354
 Conc: 575.34 ng/ml m



#31 AR-1260-1

R.T.: 6.399 min
 Delta R.T.: -0.008 min
 Response: 25719590
 Conc: 516.62 ng/ml



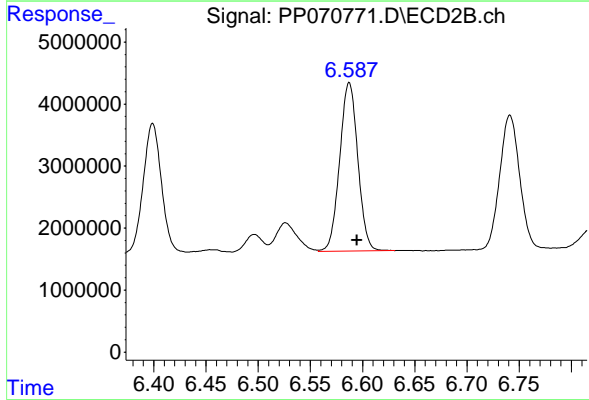
#32 AR-1260-2

R.T.: 7.519 min
 Delta R.T.: -0.006 min
 Response: 47308439
 Conc: 576.63 ng/ml

Instrument :
 ECD_P
 ClientSampleId :
 AR1660CCC500

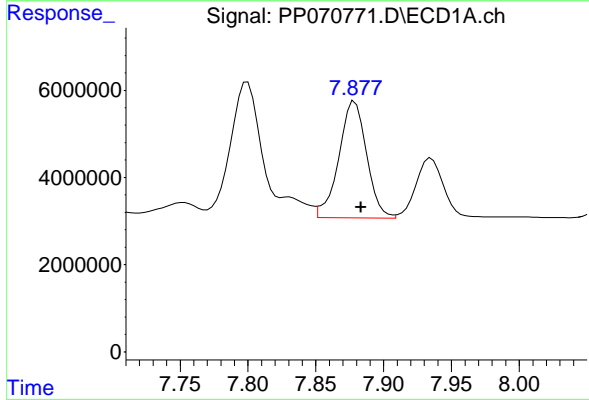
Manual Integrations
 APPROVED

Reviewed By :Yogesh Patel 03/21/2025
 Supervised By :mohammad ahmed 03/24/2025



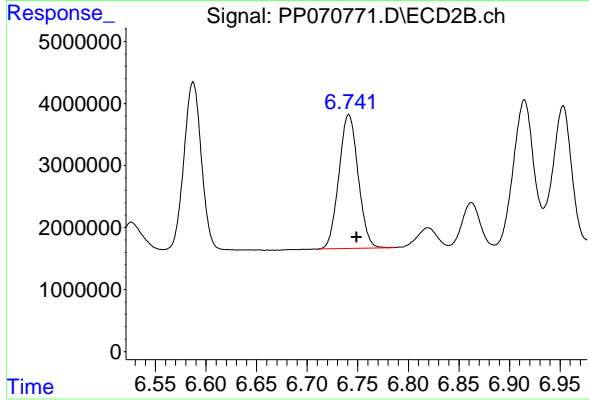
#32 AR-1260-2

R.T.: 6.587 min
 Delta R.T.: -0.008 min
 Response: 32897731
 Conc: 497.79 ng/ml



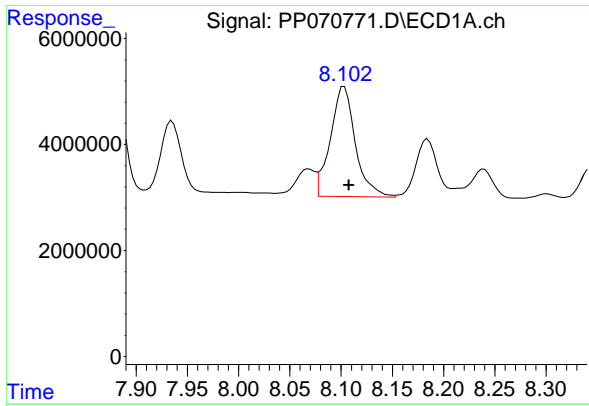
#33 AR-1260-3

R.T.: 7.879 min
 Delta R.T.: -0.004 min
 Response: 38145343
 Conc: 580.09 ng/ml



#33 AR-1260-3

R.T.: 6.741 min
 Delta R.T.: -0.008 min
 Response: 28586454
 Conc: 499.79 ng/ml



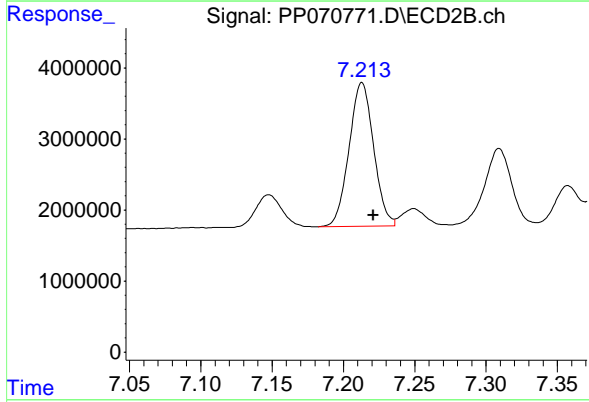
#34 AR-1260-4

R.T.: 8.103 min
 Delta R.T.: -0.005 min
 Response: 35138545
 Conc: 537.76 ng/ml

Instrument : ECD_P
 Client Sample Id : AR1660CCC500

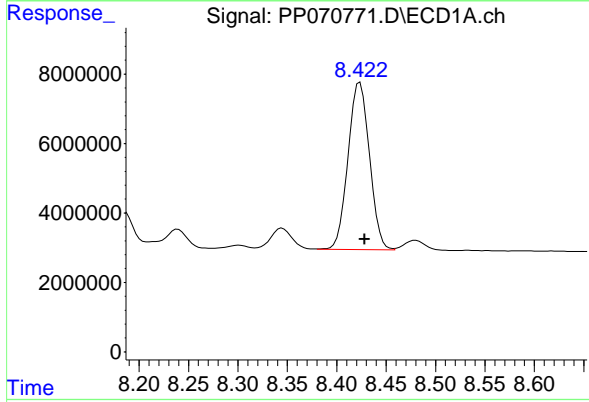
Manual Integrations
 APPROVED

Reviewed By :Yogesh Patel 03/21/2025
 Supervised By :mohammad ahmed 03/24/2025



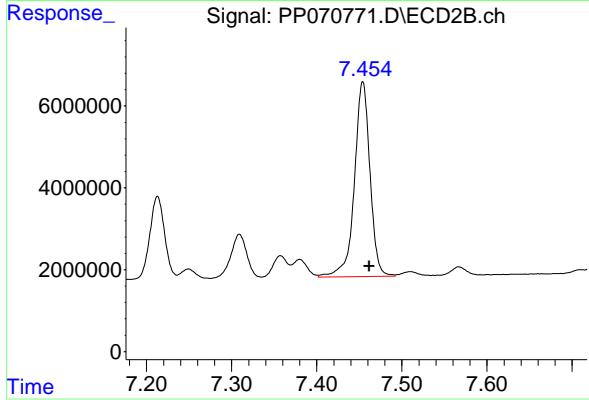
#34 AR-1260-4

R.T.: 7.213 min
 Delta R.T.: -0.008 min
 Response: 24225911
 Conc: 473.50 ng/ml



#35 AR-1260-5

R.T.: 8.423 min
 Delta R.T.: -0.005 min
 Response: 72902905
 Conc: 533.39 ng/ml



#35 AR-1260-5

R.T.: 7.454 min
 Delta R.T.: -0.008 min
 Response: 60492678
 Conc: 469.72 ng/ml