

Data Path : Z:\pestpcbsrv\HPCHEM1\ECD\_P\Data\PP032025\  
 Data File : PP070773.D  
 Signal(s) : Signal #1: ECD1A.ch Signal #2: ECD2B.ch  
 Acq On : 20 Mar 2025 23:00  
 Operator : YP\AJ  
 Sample : AR1248CCC500  
 Misc :  
 ALS Vial : 5 Sample Multiplier: 1

Instrument :  
 ECD\_P  
 ClientSampleId :  
 AR1248CCC500

Integration File signal 1: autoint1.e  
 Integration File signal 2: autoint2.e  
 Quant Time: Mar 21 04:21:58 2025  
 Quant Method : Z:\pestpcbsrv\HPCHEM1\ECD\_P\methods\PP031125.M  
 Quant Title : GC EXTRACTABLES  
 QLast Update : Wed Mar 19 05:25:31 2025  
 Response via : Initial Calibration  
 Integrator: ChemStation

Volume Inj. : 2 µl  
 Signal #1 Phase : ZB-MR1 Signal #2 Phase: ZB-MR2  
 Signal #1 Info : 30Mx0.32mmx 0.50µ Signal #2 Info : 30M x 0.32mm x 0.25µm

Compound	RT#1	RT#2	Resp#1	Resp#2	ng/ml	ng/ml
-----						
System Monitoring Compounds						
1) SA Tetrachlo...	4.519	3.822	81145964	55838613	52.171	55.712
2) SA Decachlor...	10.240	8.867	57444930	48273242	54.074	49.341
Target Compounds						
21) L5 AR-1248-1	5.671	4.908	16247895	12427883	475.697	529.397
22) L5 AR-1248-2	5.943	5.145	21978037	15968600	517.773	510.123
23) L5 AR-1248-3	6.145	5.188	23847929	17062685	516.763	537.889
24) L5 AR-1248-4	6.544	5.360	31514367	21353543	543.433	547.904
25) L5 AR-1248-5	6.584	5.754	30950116	20673641	576.488	542.805
-----						

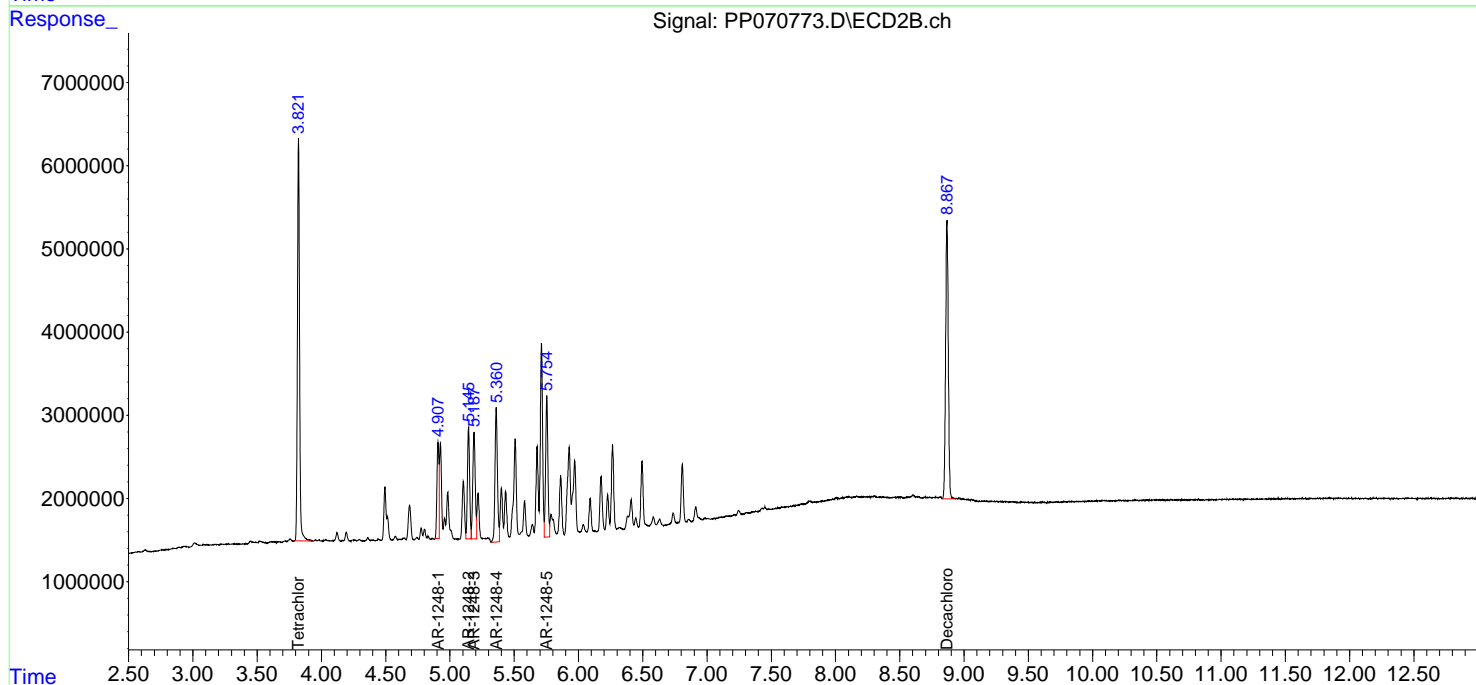
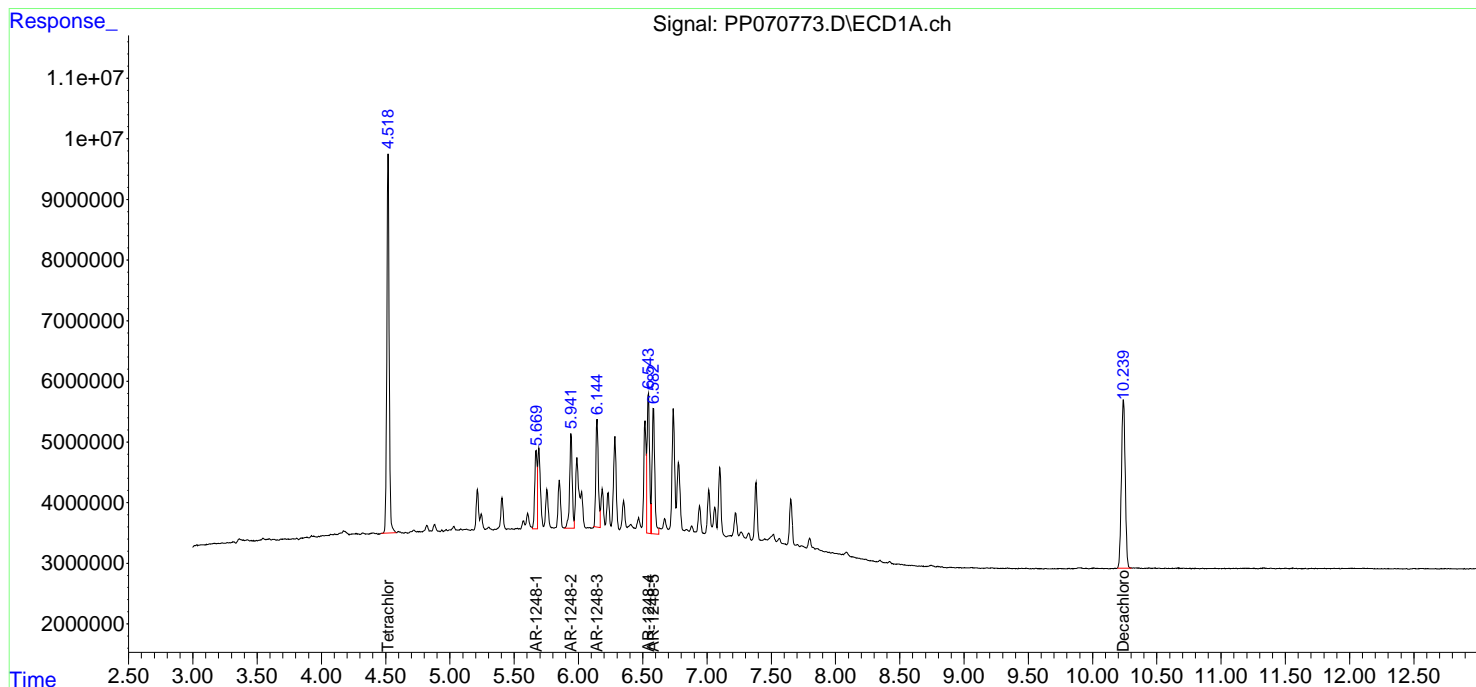
(f)=RT Delta > 1/2 Window (#)=Amounts differ by > 25% (m)=manual int.

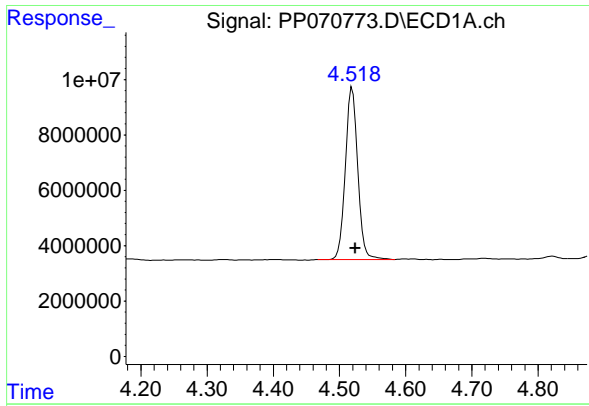
Data Path : Z:\pestpcbsrv\HPCHEM1\ECD\_P\Data\PP032025\  
 Data File : PP070773.D  
 Signal(s) : Signal #1: ECD1A.ch Signal #2: ECD2B.ch  
 Acq On : 20 Mar 2025 23:00  
 Operator : YP\AJ  
 Sample : AR1248CCC500  
 Misc :  
 ALS Vial : 5 Sample Multiplier: 1

Instrument :  
 ECD\_P  
 ClientSampleId :  
 AR1248CCC500

Integration File signal 1: autoint1.e  
 Integration File signal 2: autoint2.e  
 Quant Time: Mar 21 04:21:58 2025  
 Quant Method : Z:\pestpcbsrv\HPCHEM1\ECD\_P\methods\PP031125.M  
 Quant Title : GC EXTRACTABLES  
 QLast Update : Wed Mar 19 05:25:31 2025  
 Response via : Initial Calibration  
 Integrator: ChemStation

Volume Inj. : 2 µl  
 Signal #1 Phase : ZB-MR1 Signal #2 Phase: ZB-MR2  
 Signal #1 Info : 30Mx0.32mmx 0.50µm Signal #2 Info : 30M x 0.32mm x 0.25µm

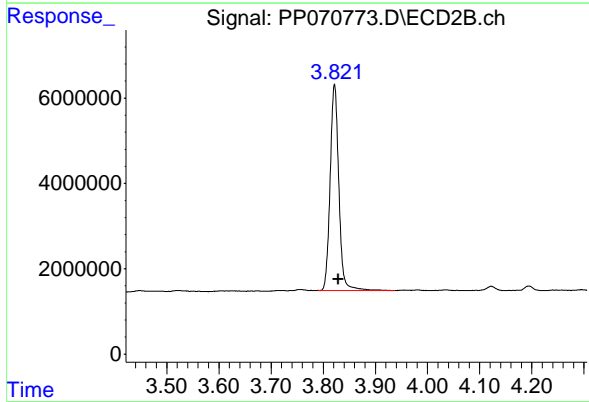




#1 Tetrachloro-m-xylene

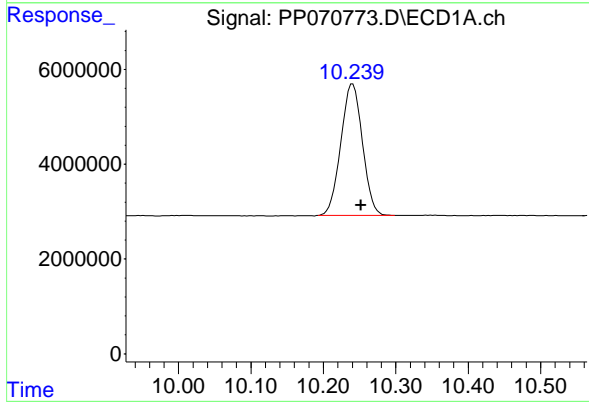
R.T.: 4.519 min  
 Delta R.T.: -0.005 min  
 Response: 81145964  
 Conc: 52.17 ng/ml

Instrument :  
 ECD\_P  
 ClientSampleId :  
 AR1248CCC500



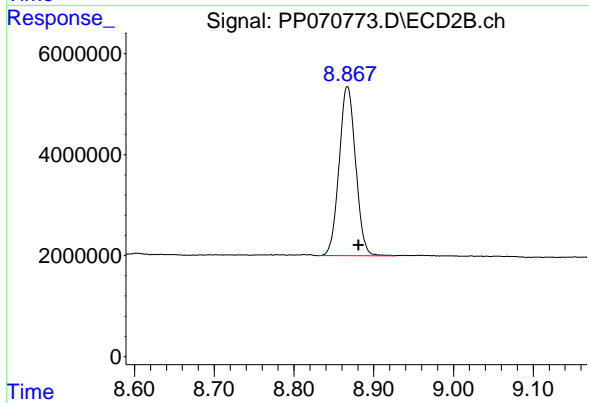
#1 Tetrachloro-m-xylene

R.T.: 3.822 min  
 Delta R.T.: -0.007 min  
 Response: 55838613  
 Conc: 55.71 ng/ml



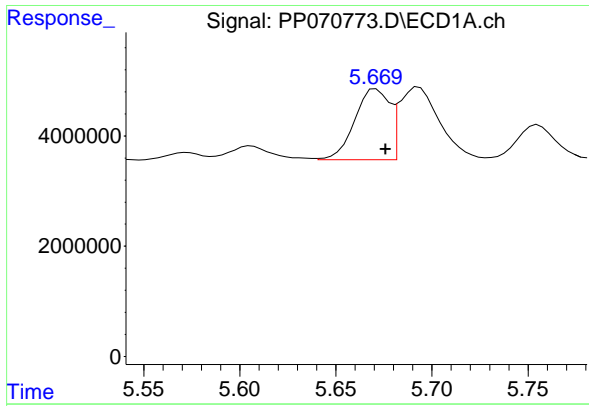
#2 Decachlorobiphenyl

R.T.: 10.240 min  
 Delta R.T.: -0.011 min  
 Response: 57444930  
 Conc: 54.07 ng/ml



#2 Decachlorobiphenyl

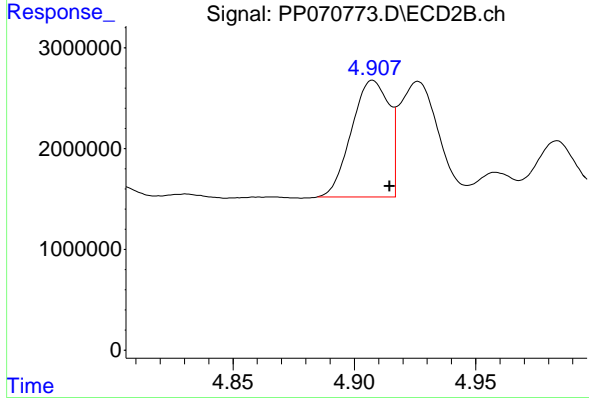
R.T.: 8.867 min  
 Delta R.T.: -0.014 min  
 Response: 48273242  
 Conc: 49.34 ng/ml



#21 AR-1248-1

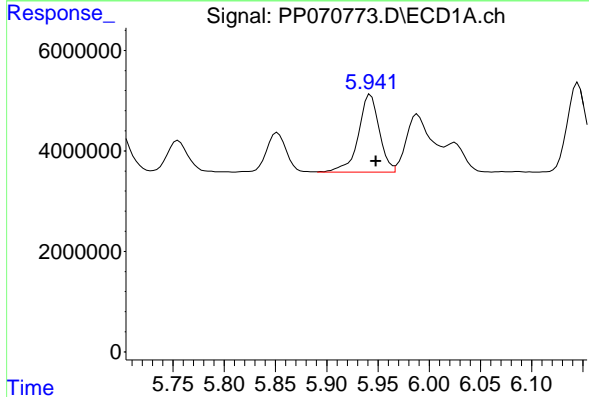
R.T.: 5.671 min  
 Delta R.T.: -0.005 min  
 Response: 16247895  
 Conc: 475.70 ng/ml

Instrument :  
 ECD\_P  
 ClientSampleId :  
 AR1248CCC500



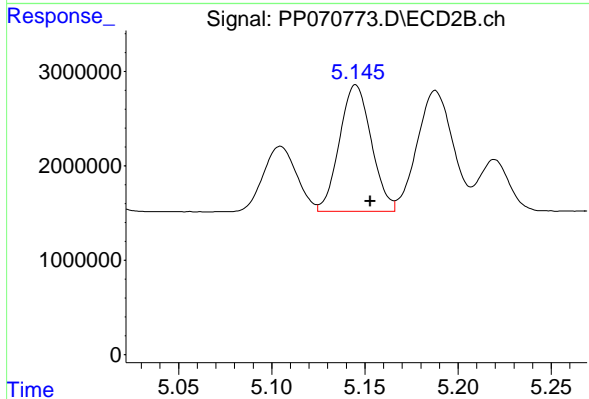
#21 AR-1248-1

R.T.: 4.908 min  
 Delta R.T.: -0.007 min  
 Response: 12427883  
 Conc: 529.40 ng/ml



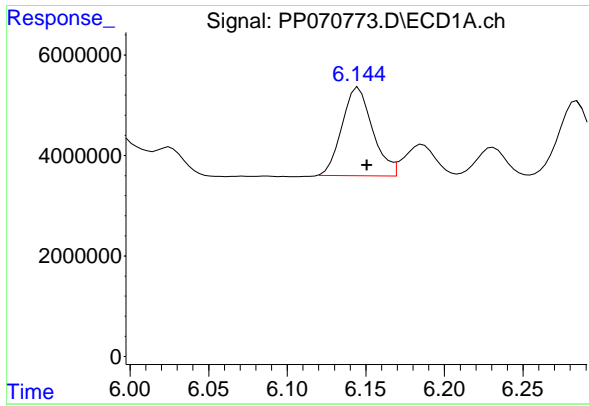
#22 AR-1248-2

R.T.: 5.943 min  
 Delta R.T.: -0.005 min  
 Response: 21978037  
 Conc: 517.77 ng/ml



#22 AR-1248-2

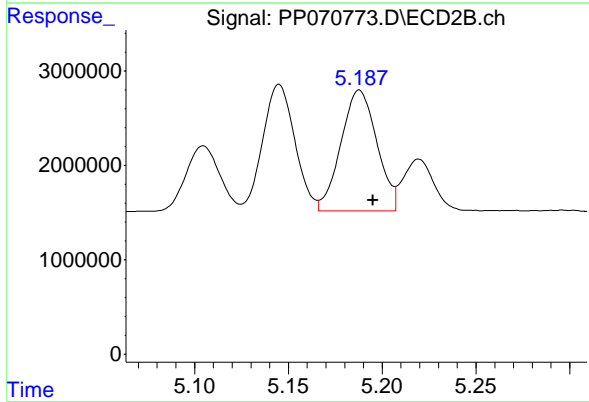
R.T.: 5.145 min  
 Delta R.T.: -0.008 min  
 Response: 15968600  
 Conc: 510.12 ng/ml



#23 AR-1248-3

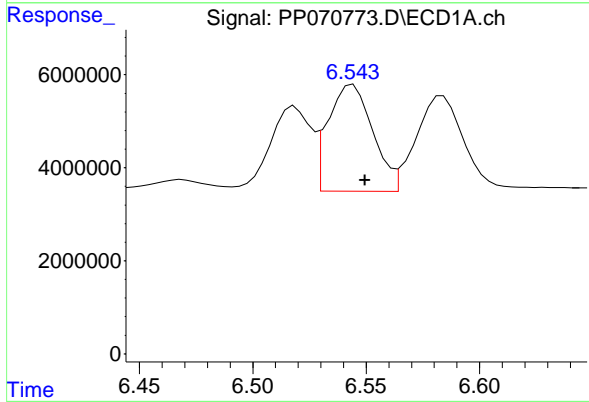
R.T.: 6.145 min  
 Delta R.T.: -0.005 min  
 Response: 23847929  
 Conc: 516.76 ng/ml

Instrument :  
 ECD\_P  
 ClientSampleId :  
 AR1248CCC500



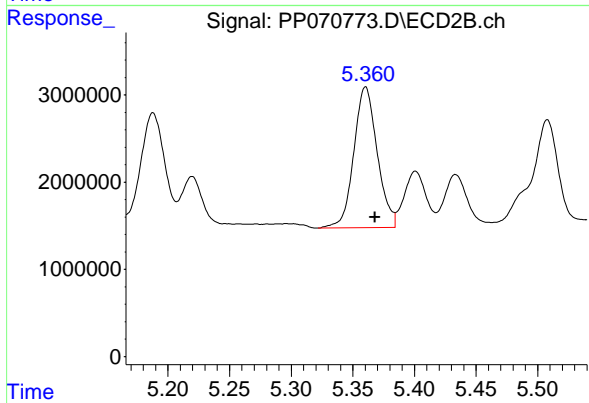
#23 AR-1248-3

R.T.: 5.188 min  
 Delta R.T.: -0.007 min  
 Response: 17062685  
 Conc: 537.89 ng/ml



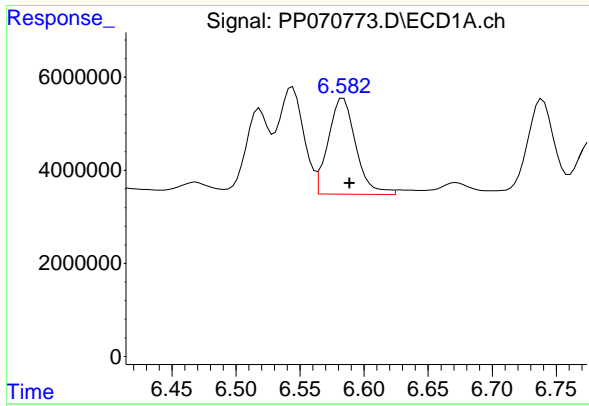
#24 AR-1248-4

R.T.: 6.544 min  
 Delta R.T.: -0.005 min  
 Response: 31514367  
 Conc: 543.43 ng/ml



#24 AR-1248-4

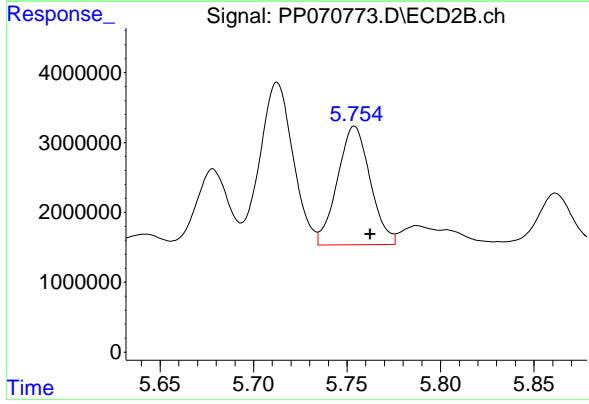
R.T.: 5.360 min  
 Delta R.T.: -0.008 min  
 Response: 21353543  
 Conc: 547.90 ng/ml



#25 AR-1248-5

R.T.: 6.584 min  
Delta R.T.: -0.005 min  
Response: 30950116  
Conc: 576.49 ng/ml

Instrument :  
ECD\_P  
ClientSampleId :  
AR1248CCC500



#25 AR-1248-5

R.T.: 5.754 min  
Delta R.T.: -0.008 min  
Response: 20673641  
Conc: 542.81 ng/ml