

Data Path : Z:\pestpcbsrv\HPCHEM1\ECD_P\Data\PP032124\
 Data File : PP063621.D
 Signal(s) : Signal #1: ECD1A.ch Signal #2: ECD2B.ch
 Acq On : 20 Mar 2024 09:59
 Operator : YP\AJ
 Sample : AR1254CCC500
 Misc :
 ALS Vial : 6 Sample Multiplier: 1

Instrument :
 ECD_P
ClientSampleId :
 AR1254CCC500

Integration File signal 1: autoint1.e
 Integration File signal 2: autoint2.e
 Quant Time: Mar 20 13:54:10 2024
 Quant Method : Z:\pestpcbsrv\HPCHEM1\ECD_P\methods\PP031924.M
 Quant Title : GC EXTRACTABLES
 QLast Update : Tue Mar 19 06:23:02 2024
 Response via : Initial Calibration
 Integrator: ChemStation

Volume Inj. : 2 µl
 Signal #1 Phase : ZB-MR1 Signal #2 Phase: ZB-MR2
 Signal #1 Info : 30Mx0.32mmx 0.50µ Signal #2 Info : 30M x 0.32mm x 0.25µm

Compound	RT#1	RT#2	Resp#1	Resp#2	ng/ml	ng/ml

System Monitoring Compounds						
1) SA Tetrachlo...	4.489	3.638	113.9E6	118.4E6	47.713	49.591
2) SA Decachlor...	10.366	8.681	123.2E6	133.3E6	48.541	49.326
Target Compounds						
26) L6 AR-1254-1	6.537	5.539	44717261	61240050	491.845	495.579
27) L6 AR-1254-2	6.758	5.688	66959329	56644535	488.429	493.505
28) L6 AR-1254-3	7.127	6.093	69030340	90232024	493.265	501.456
29) L6 AR-1254-4	7.416	6.323	46428548	48548887	509.599	526.848
30) L6 AR-1254-5	7.836	6.743	60528809	85725965	514.801	513.572

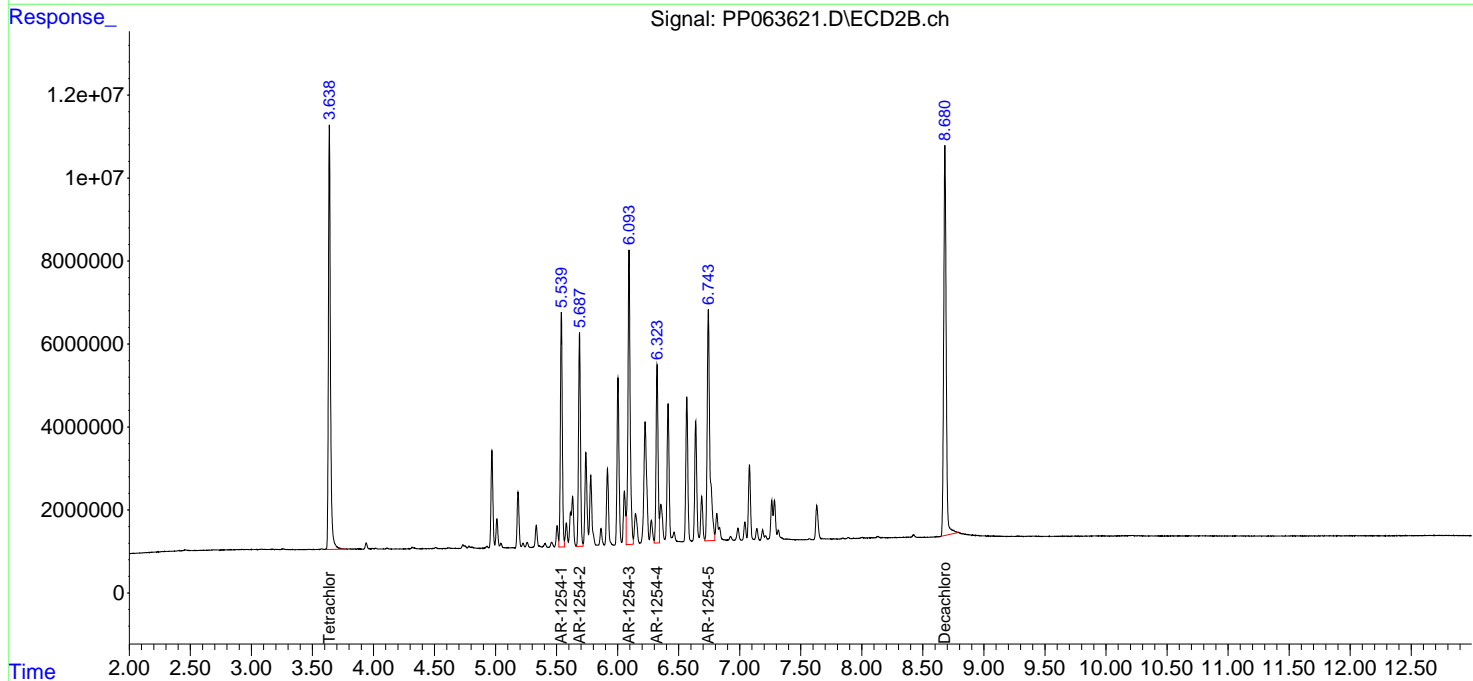
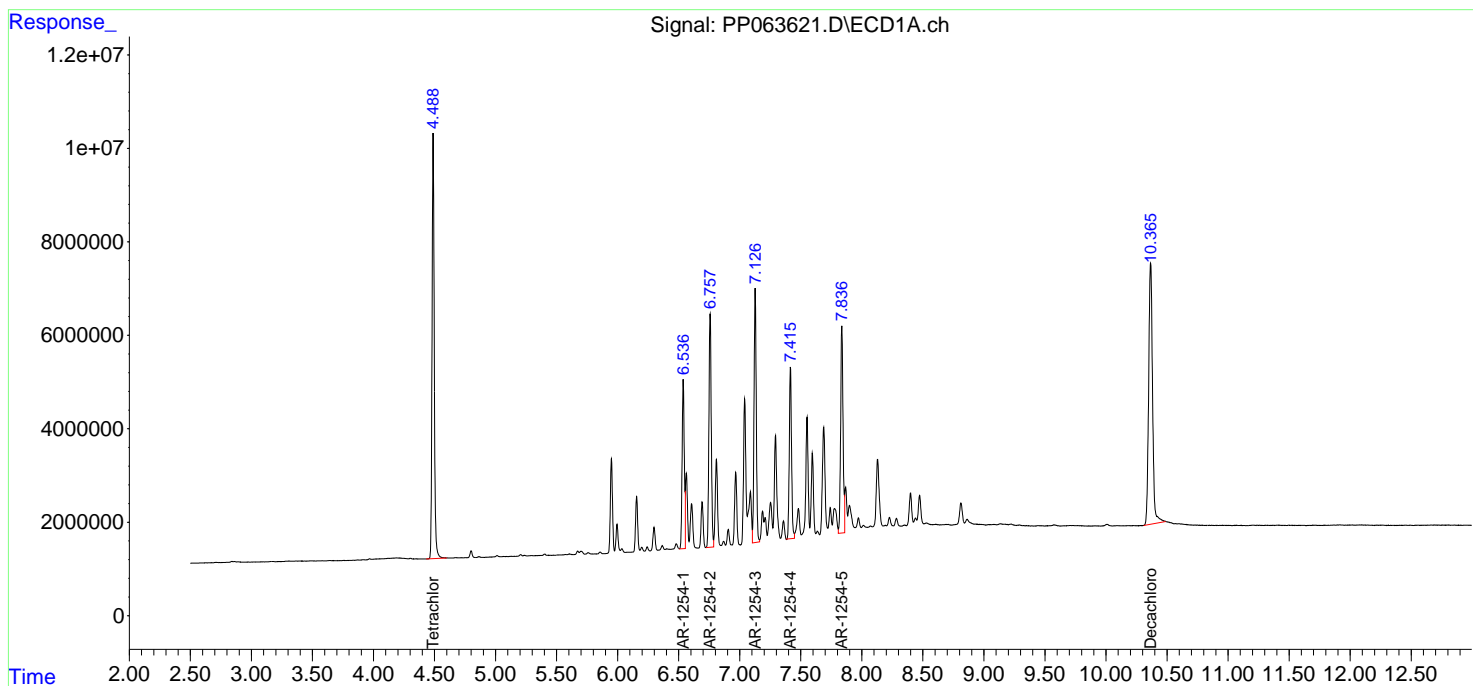
(f)=RT Delta > 1/2 Window (#)=Amounts differ by > 25% (m)=manual int.

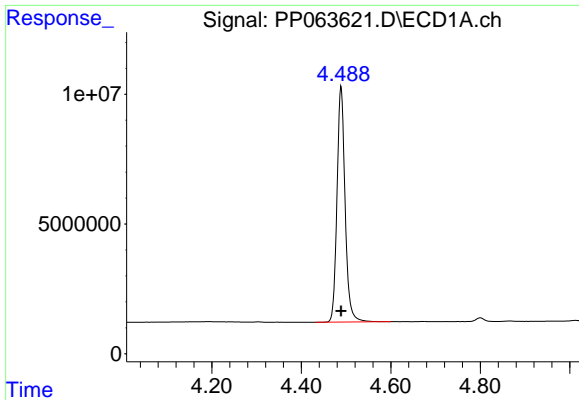
Data Path : Z:\pestpcbsrv\HPCHEM1\ECD_P\Data\PP032124\
 Data File : PP063621.D
 Signal(s) : Signal #1: ECD1A.ch Signal #2: ECD2B.ch
 Acq On : 20 Mar 2024 09:59
 Operator : YP\AJ
 Sample : AR1254CCC500
 Misc :
 ALS Vial : 6 Sample Multiplier: 1

Instrument :
 ECD_P
 ClientSampleId :
 AR1254CCC500

Integration File signal 1: autoint1.e
 Integration File signal 2: autoint2.e
 Quant Time: Mar 20 13:54:10 2024
 Quant Method : Z:\pestpcbsrv\HPCHEM1\ECD_P\methods\PP031924.M
 Quant Title : GC EXTRACTABLES
 QLast Update : Tue Mar 19 06:23:02 2024
 Response via : Initial Calibration
 Integrator: ChemStation

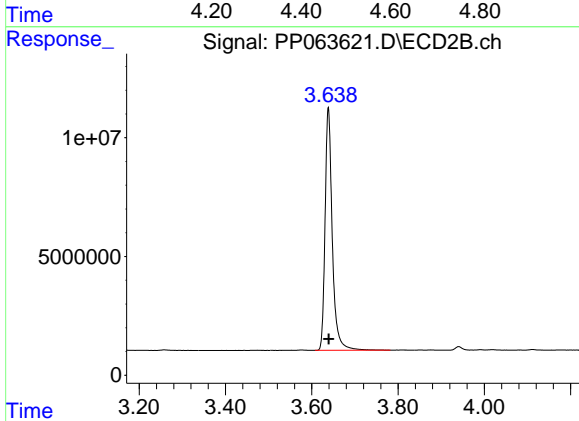
Volume Inj. : 2 µl
 Signal #1 Phase : ZB-MR1 Signal #2 Phase: ZB-MR2
 Signal #1 Info : 30Mx0.32mmx 0.50µ Signal #2 Info : 30M x 0.32mm x 0.25µm



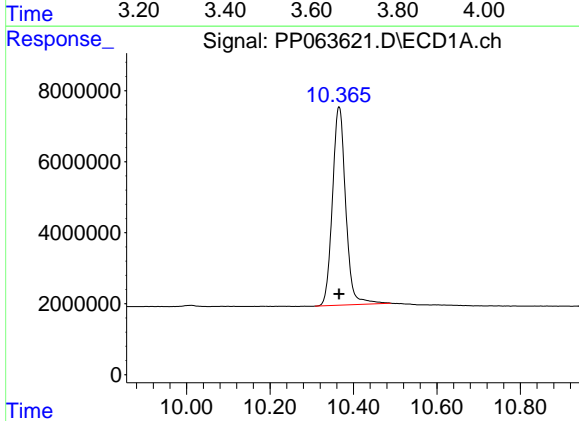


#1 Tetrachloro-m-xylene
R.T.: 4.489 min
Delta R.T.: 0.000 min
Response: 113851970
Conc: 47.71 ng/ml

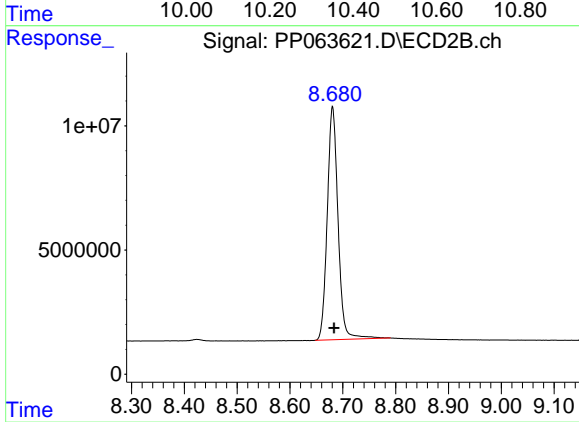
Instrument :
ECD_P
ClientSampleId :
AR1254CCC500



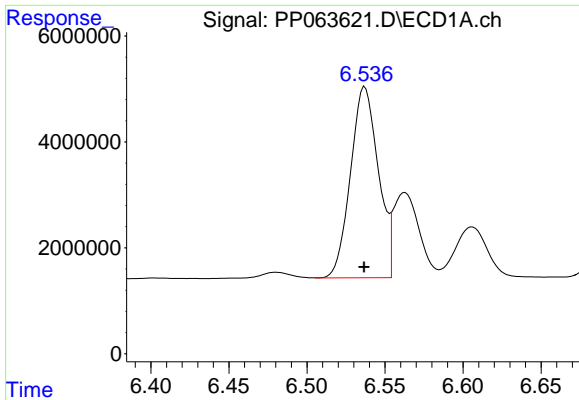
#1 Tetrachloro-m-xylene
R.T.: 3.638 min
Delta R.T.: 0.000 min
Response: 118400132
Conc: 49.59 ng/ml



#2 Decachlorobiphenyl
R.T.: 10.366 min
Delta R.T.: 0.000 min
Response: 123244629
Conc: 48.54 ng/ml



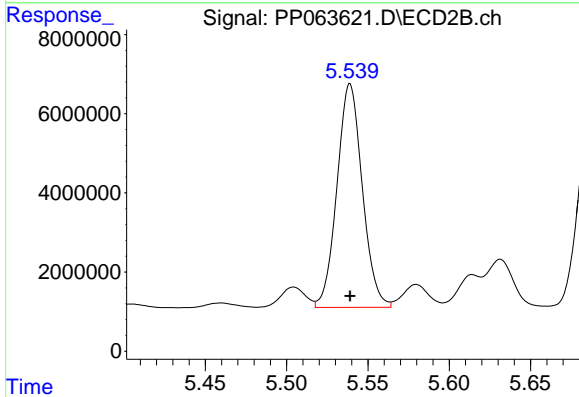
#2 Decachlorobiphenyl
R.T.: 8.681 min
Delta R.T.: -0.003 min
Response: 133304855
Conc: 49.33 ng/ml



#26 AR-1254-1

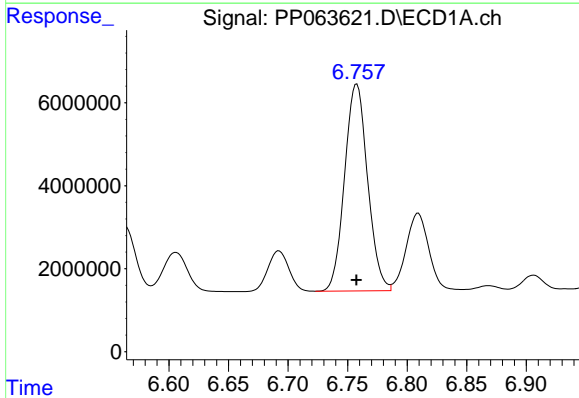
R.T.: 6.537 min
 Delta R.T.: 0.000 min
 Response: 44717261
 Conc: 491.84 ng/ml

Instrument :
 ECD_P
 ClientSampleId :
 AR1254CCC500



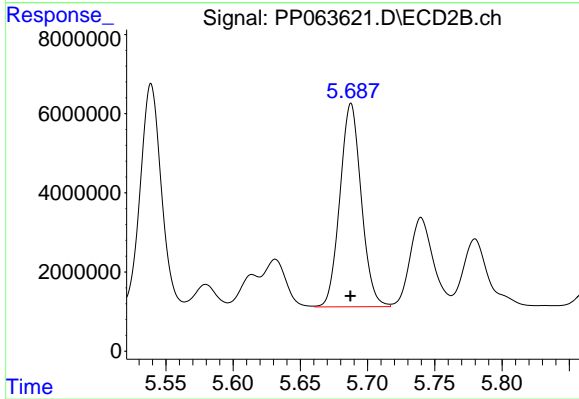
#26 AR-1254-1

R.T.: 5.539 min
 Delta R.T.: 0.000 min
 Response: 61240050
 Conc: 495.58 ng/ml



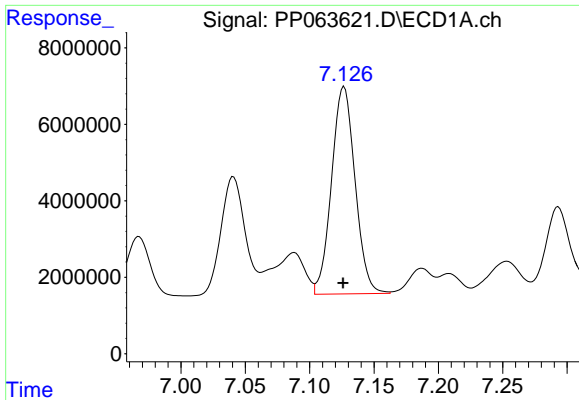
#27 AR-1254-2

R.T.: 6.758 min
 Delta R.T.: 0.000 min
 Response: 66959329
 Conc: 488.43 ng/ml



#27 AR-1254-2

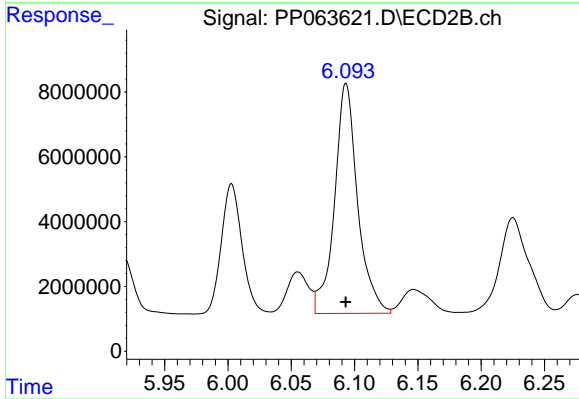
R.T.: 5.688 min
 Delta R.T.: 0.000 min
 Response: 56644535
 Conc: 493.50 ng/ml



#28 AR-1254-3

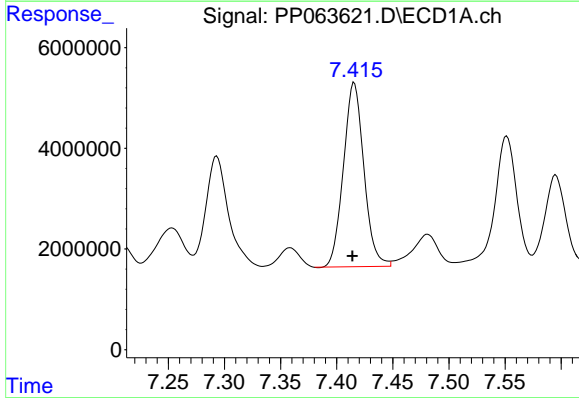
R.T.: 7.127 min
 Delta R.T.: 0.000 min
 Response: 69030340
 Conc: 493.27 ng/ml

Instrument :
 ECD_P
 ClientSampleId :
 AR1254CCC500



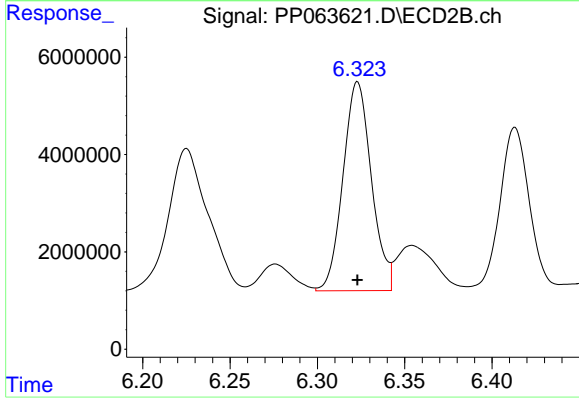
#28 AR-1254-3

R.T.: 6.093 min
 Delta R.T.: 0.000 min
 Response: 90232024
 Conc: 501.46 ng/ml



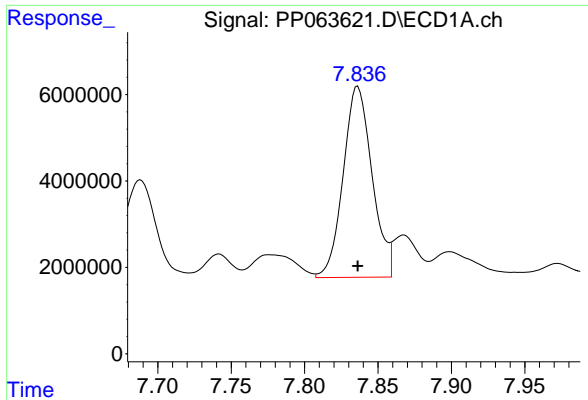
#29 AR-1254-4

R.T.: 7.416 min
 Delta R.T.: 0.002 min
 Response: 46428548
 Conc: 509.60 ng/ml



#29 AR-1254-4

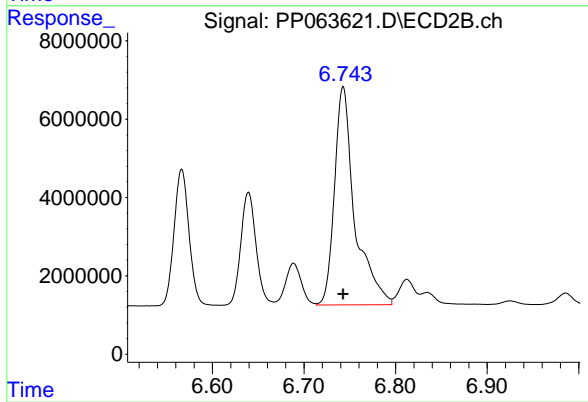
R.T.: 6.323 min
 Delta R.T.: 0.000 min
 Response: 48548887
 Conc: 526.85 ng/ml



#30 AR-1254-5

R.T.: 7.836 min
Delta R.T.: 0.000 min
Response: 60528809
Conc: 514.80 ng/ml

Instrument :
ECD_P
ClientSampleId :
AR1254CCC500



#30 AR-1254-5

R.T.: 6.743 min
Delta R.T.: 0.000 min
Response: 85725965
Conc: 513.57 ng/ml