

Data Path : Z:\pestpcbsrv\HPCHEM1\ECD_P\Data\PP032124\
 Data File : PP063651.D
 Signal(s) : Signal #1: ECD1A.ch Signal #2: ECD2B.ch
 Acq On : 20 Mar 2024 21:25
 Operator : YP\AJ
 Sample : AR1254CCC500
 Misc :
 ALS Vial : 6 Sample Multiplier: 1

Instrument :
 ECD_P
 ClientSampleId :
 AR1254CCC500

Integration File signal 1: autoint1.e
 Integration File signal 2: autoint2.e
 Quant Time: Mar 20 22:55:26 2024
 Quant Method : Z:\pestpcbsrv\HPCHEM1\ECD_P\methods\PP031924.M
 Quant Title : GC EXTRACTABLES
 QLast Update : Tue Mar 19 06:23:02 2024
 Response via : Initial Calibration
 Integrator: ChemStation

Volume Inj. : 2 µl
 Signal #1 Phase : ZB-MR1 Signal #2 Phase: ZB-MR2
 Signal #1 Info : 30Mx0.32mmx 0.50µ Signal #2 Info : 30M x 0.32mm x 0.25µm

Compound	RT#1	RT#2	Resp#1	Resp#2	ng/ml	ng/ml

System Monitoring Compounds						
1) SA Tetrachlo...	4.489	3.639	111.5E6	118.8E6	46.723	49.759
2) SA Decachlor...	10.361	8.679	117.3E6	111.1E6	46.195	41.123
Target Compounds						
26) L6 AR-1254-1	6.536	5.538	43215224	59956536	475.324	485.192
27) L6 AR-1254-2	6.756	5.686	65171173	55692213	475.385	485.208
28) L6 AR-1254-3	7.125	6.092	65563212	82290483	468.491	457.322
29) L6 AR-1254-4	7.413	6.321	43682953	44311517	479.463	480.865
30) L6 AR-1254-5	7.835	6.742	55020038	72889460	467.949	436.671

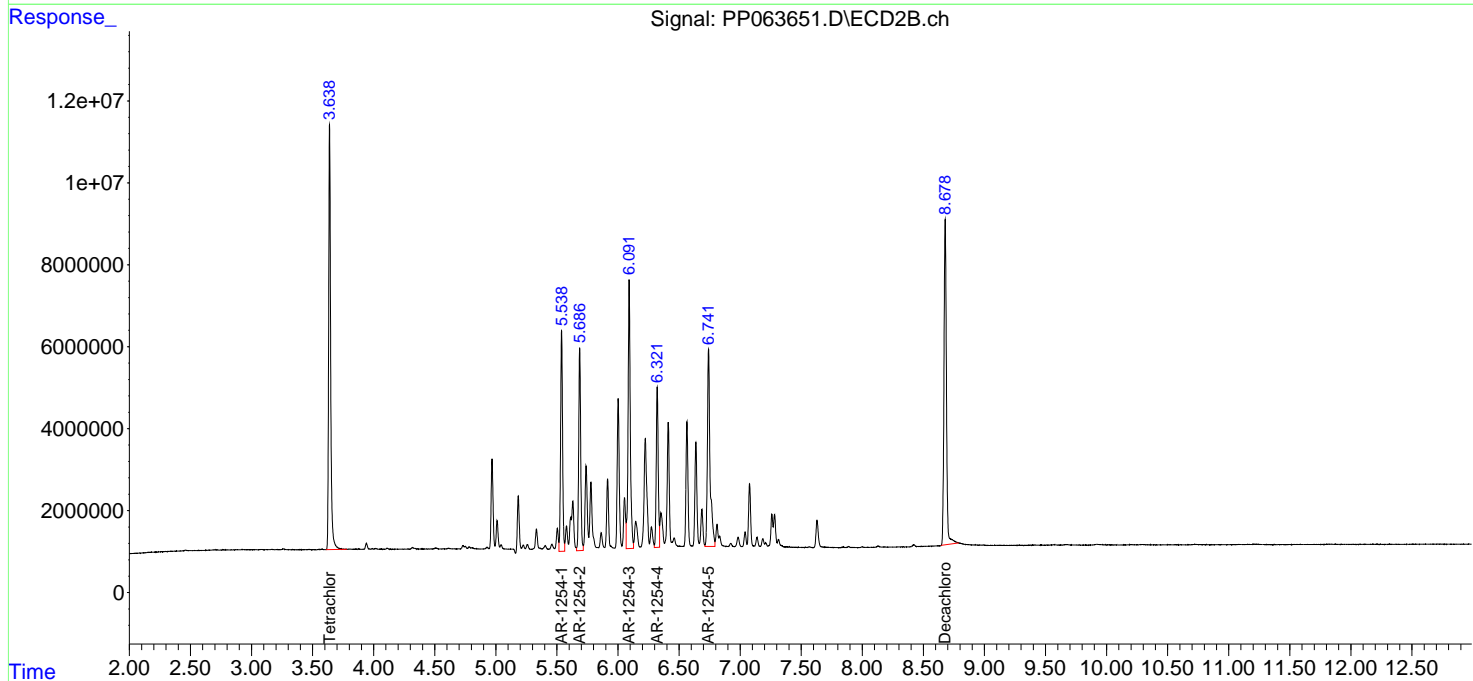
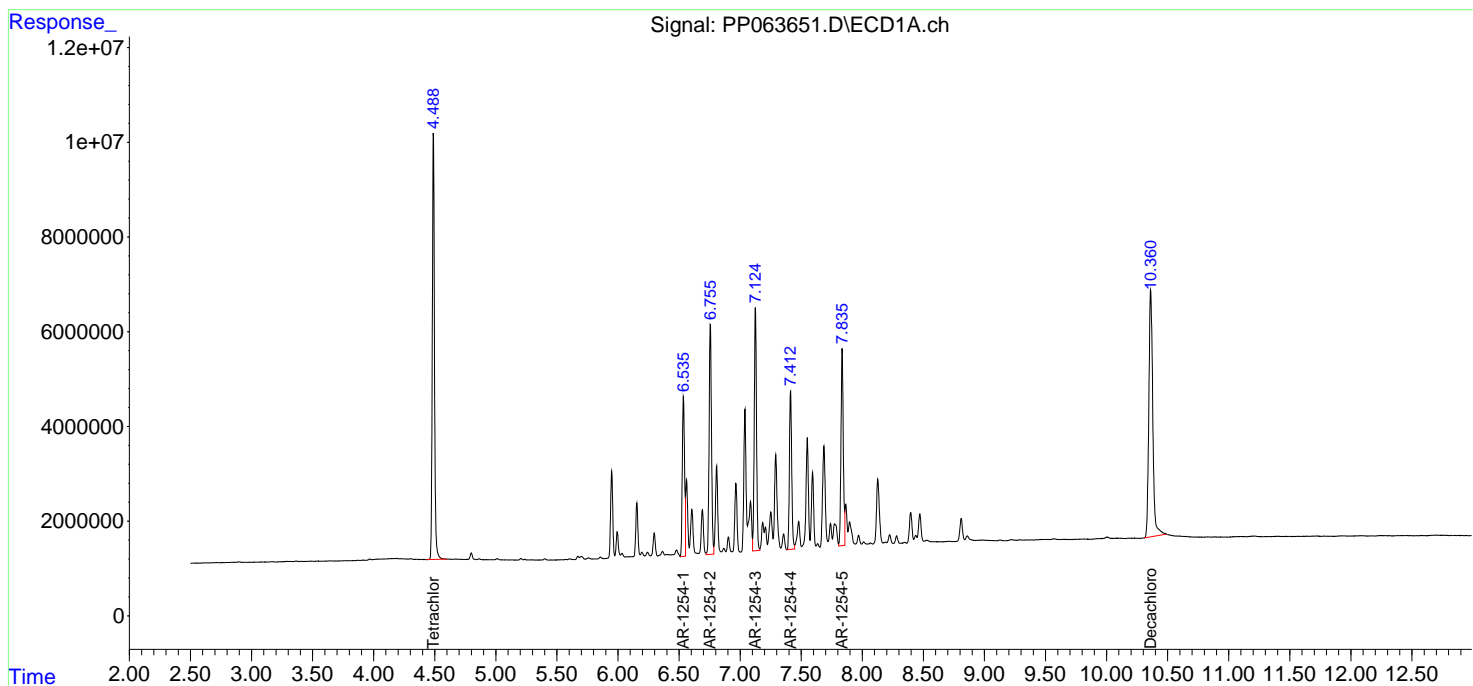
(f)=RT Delta > 1/2 Window (#)=Amounts differ by > 25% (m)=manual int.

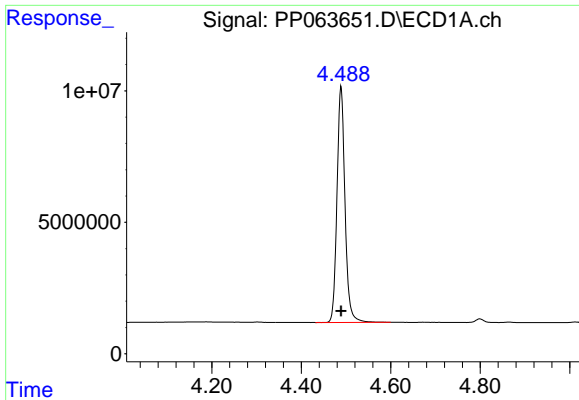
Data Path : Z:\pestpcbsrv\HPCHEM1\ECD_P\Data\PP032124\
 Data File : PP063651.D
 Signal(s) : Signal #1: ECD1A.ch Signal #2: ECD2B.ch
 Acq On : 20 Mar 2024 21:25
 Operator : YP\AJ
 Sample : AR1254CCC500
 Misc :
 ALS Vial : 6 Sample Multiplier: 1

Instrument :
 ECD_P
 ClientSampleId :
 AR1254CCC500

Integration File signal 1: autoint1.e
 Integration File signal 2: autoint2.e
 Quant Time: Mar 20 22:55:26 2024
 Quant Method : Z:\pestpcbsrv\HPCHEM1\ECD_P\methods\PP031924.M
 Quant Title : GC EXTRACTABLES
 QLast Update : Tue Mar 19 06:23:02 2024
 Response via : Initial Calibration
 Integrator: ChemStation

Volume Inj. : 2 µl
 Signal #1 Phase : ZB-MR1 Signal #2 Phase: ZB-MR2
 Signal #1 Info : 30Mx0.32mmx 0.50µ Signal #2 Info : 30M x 0.32mm x 0.25µm

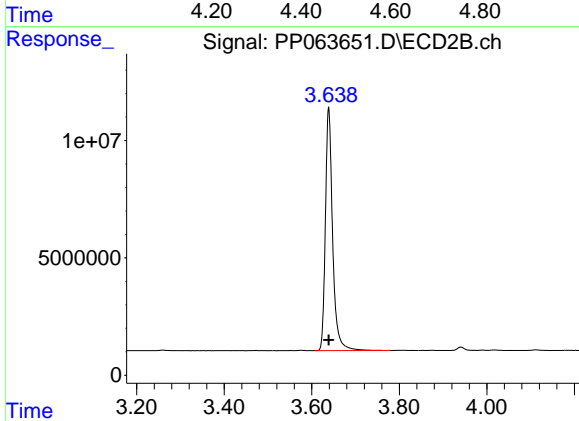




#1 Tetrachloro-m-xylene

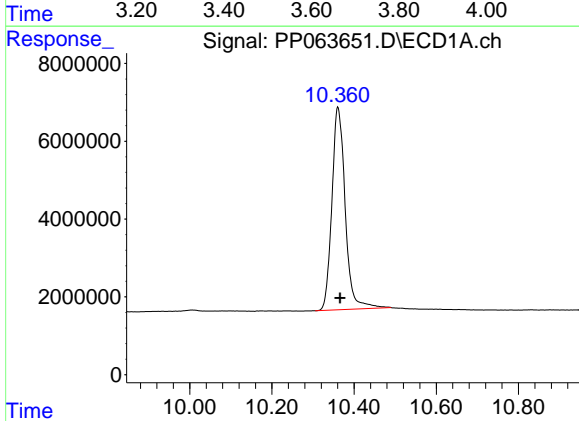
R.T.: 4.489 min
 Delta R.T.: 0.000 min
 Response: 111489368
 Conc: 46.72 ng/ml

Instrument :
 ECD_P
 ClientSampleId :
 AR1254CCC500



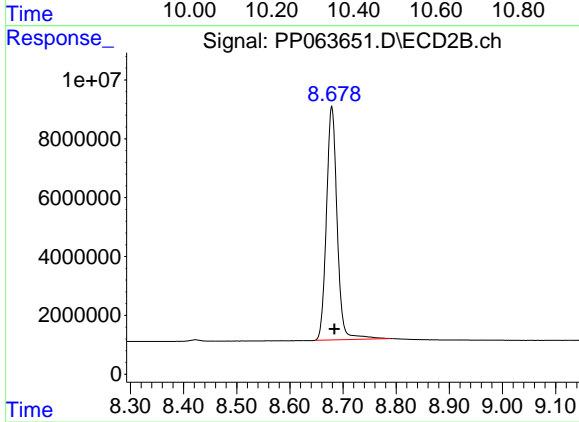
#1 Tetrachloro-m-xylene

R.T.: 3.639 min
 Delta R.T.: 0.000 min
 Response: 118801776
 Conc: 49.76 ng/ml



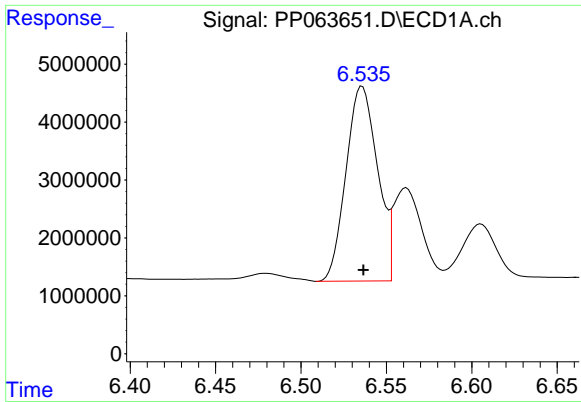
#2 Decachlorobiphenyl

R.T.: 10.361 min
 Delta R.T.: -0.005 min
 Response: 117290503
 Conc: 46.20 ng/ml



#2 Decachlorobiphenyl

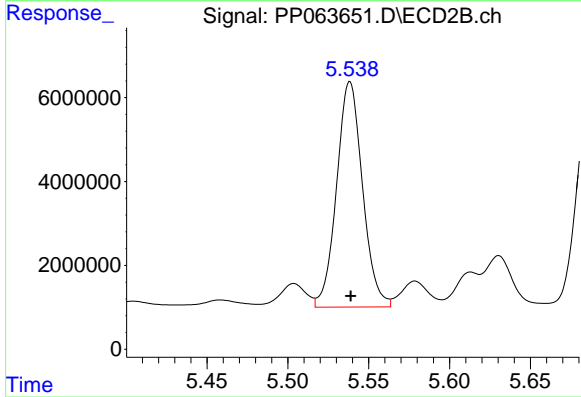
R.T.: 8.679 min
 Delta R.T.: -0.005 min
 Response: 111135930
 Conc: 41.12 ng/ml



#26 AR-1254-1

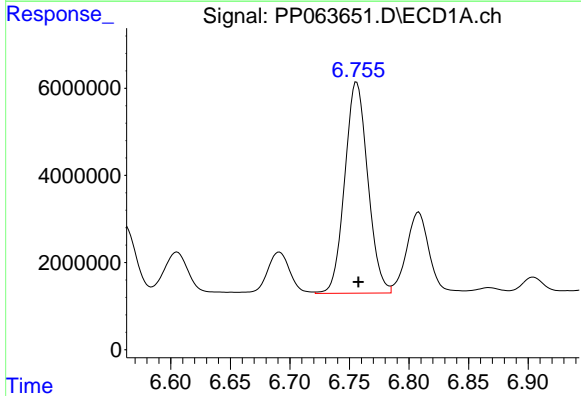
R.T.: 6.536 min
Delta R.T.: 0.000 min
Response: 43215224
Conc: 475.32 ng/ml

Instrument :
ECD_P
ClientSampleId :
AR1254CCC500



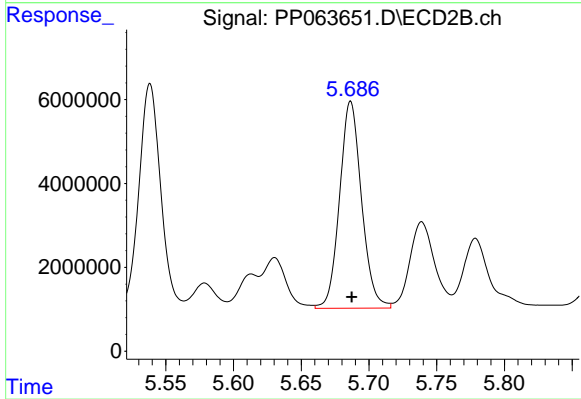
#26 AR-1254-1

R.T.: 5.538 min
Delta R.T.: 0.000 min
Response: 59956536
Conc: 485.19 ng/ml



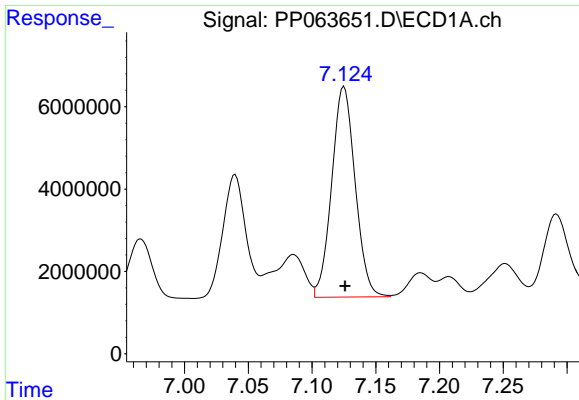
#27 AR-1254-2

R.T.: 6.756 min
Delta R.T.: -0.001 min
Response: 65171173
Conc: 475.39 ng/ml



#27 AR-1254-2

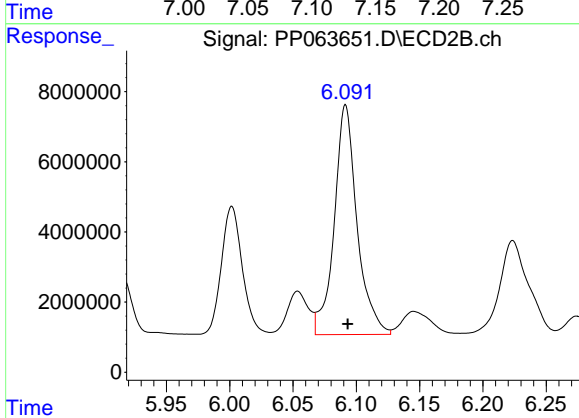
R.T.: 5.686 min
Delta R.T.: 0.000 min
Response: 55692213
Conc: 485.21 ng/ml



#28 AR-1254-3

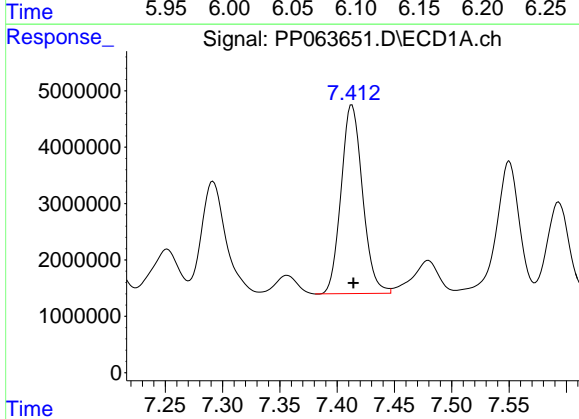
R.T.: 7.125 min
 Delta R.T.: 0.000 min
 Response: 65563212
 Conc: 468.49 ng/ml

Instrument :
 ECD_P
 ClientSampleId :
 AR1254CCC500



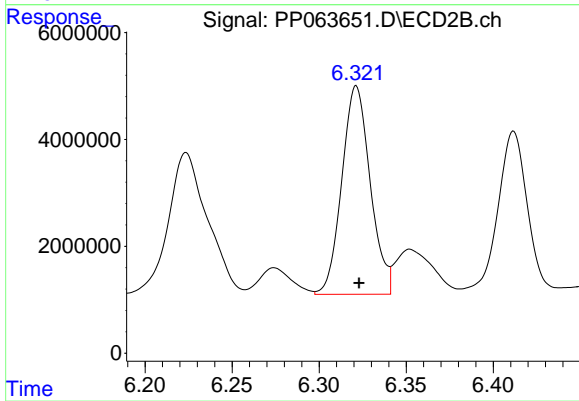
#28 AR-1254-3

R.T.: 6.092 min
 Delta R.T.: -0.002 min
 Response: 82290483
 Conc: 457.32 ng/ml



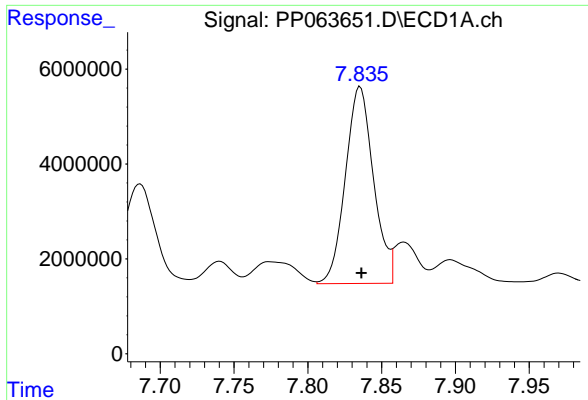
#29 AR-1254-4

R.T.: 7.413 min
 Delta R.T.: -0.001 min
 Response: 43682953
 Conc: 479.46 ng/ml



#29 AR-1254-4

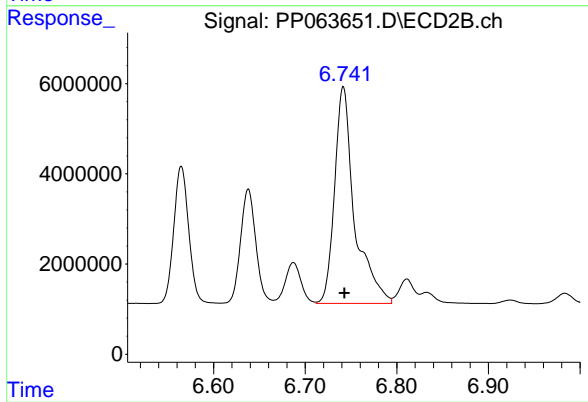
R.T.: 6.321 min
 Delta R.T.: -0.002 min
 Response: 44311517
 Conc: 480.86 ng/ml



#30 AR-1254-5

R.T.: 7.835 min
Delta R.T.: 0.000 min
Response: 55020038
Conc: 467.95 ng/ml

Instrument :
ECD_P
ClientSampleId :
AR1254CCC500



#30 AR-1254-5

R.T.: 6.742 min
Delta R.T.: -0.001 min
Response: 72889460
Conc: 436.67 ng/ml