

Data Path : Z:\pestpcbsrv\HPCHEM1\ECD\_P\Data\PP032221\  
 Data File : PP034204.D  
 Signal(s) : Signal #1: ECD1A.CH Signal #2: ECD2B.CH  
 Acq On : 22 Mar 2021 10:00  
 Operator : DD\AJ  
 Sample : AR1254CCC500  
 Misc :  
 ALS Vial : 5 Sample Multiplier: 1

Instrument :  
 ECD\_P  
 ClientSampleId :  
 AR1254CCC500

Integration File signal 1: autoint1.e  
 Integration File signal 2: autoint2.e  
 Quant Time: Mar 23 01:54:03 2021  
 Quant Method : Z:\pestpcbsrv\HPCHEM1\ECD\_P\methods\PP031821.M  
 Quant Title : GC EXTRACTABLES  
 QLast Update : Sat Mar 20 01:42:16 2021  
 Response via : Initial Calibration  
 Integrator: ChemStation 6890 Scale Mode: Small noise peaks clipped

Volume Inj. : 2 µl  
 Signal #1 Phase : ZB-MR1 Signal #2 Phase: ZB-MR2  
 Signal #1 Info : 30Mx0.32mmx 0.50µ Signal #2 Info : 30M x 0.32mm x 0.25µm

Compound	RT#1	RT#2	Resp#1	Resp#2	ng/ml	ng/ml
-----						
System Monitoring Compounds						
1) SA Tetrachlo...	4.849	4.260	3932666	1964811	46.814	44.400
2) SA Decachlor...	10.771	9.576	3664635	1155061	46.697	43.771
Target Compounds						
26) L6 AR-1254-1	7.067	6.386	1283974	746728	469.122	445.306
27) L6 AR-1254-2	7.296	6.543	1946570	649704	467.471	448.016
28) L6 AR-1254-3	7.676	6.963	2072271	1020781	477.129	445.732
29) L6 AR-1254-4	7.972	7.199	1354581	526022	466.592	439.908
30) L6 AR-1254-5	8.398	7.627	1611464	832095	482.727	450.644
-----						

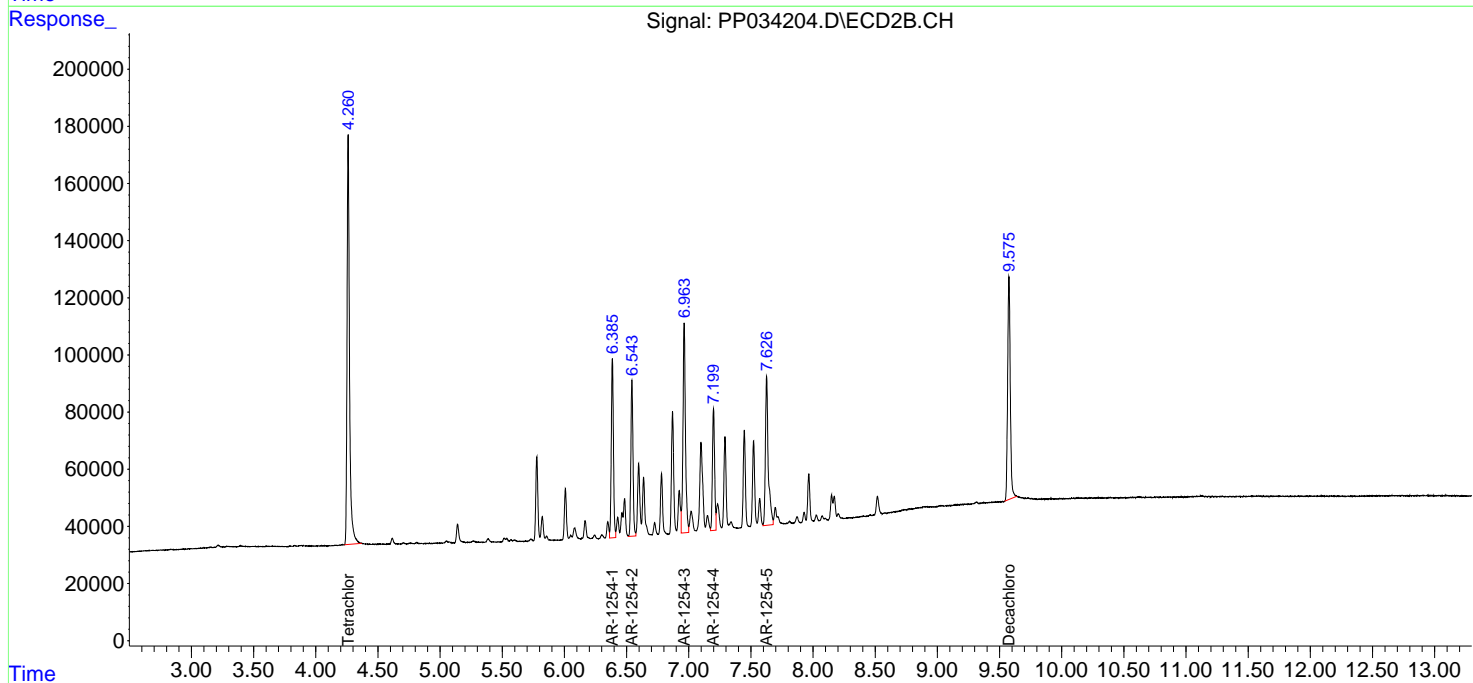
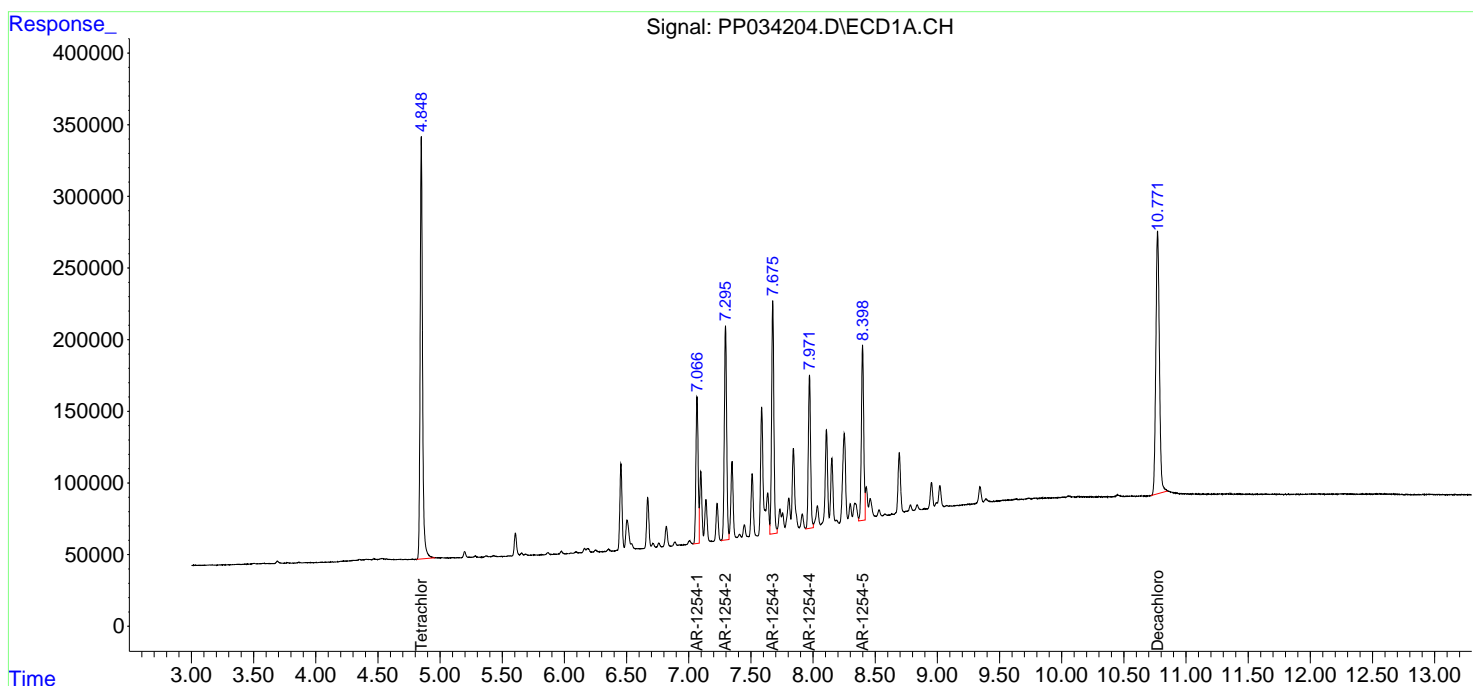
(f)=RT Delta > 1/2 Window (#)=Amounts differ by > 25% (m)=manual int.

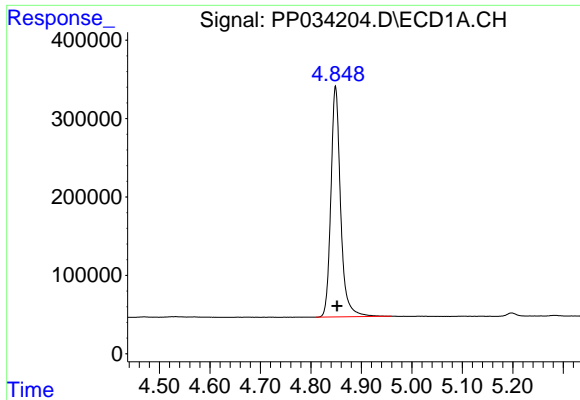
Data Path : Z:\pestpcbsrv\HPCHEM1\ECD\_P\Data\PP032221\  
 Data File : PP034204.D  
 Signal(s) : Signal #1: ECD1A.CH Signal #2: ECD2B.CH  
 Acq On : 22 Mar 2021 10:00  
 Operator : DD\AJ  
 Sample : AR1254CCC500  
 Misc :  
 ALS Vial : 5 Sample Multiplier: 1

Instrument :  
 ECD\_P  
 ClientSampled :  
 AR1254CCC500

Integration File signal 1: autoint1.e  
 Integration File signal 2: autoint2.e  
 Quant Time: Mar 23 01:54:03 2021  
 Quant Method : Z:\pestpcbsrv\HPCHEM1\ECD\_P\methods\PP031821.M  
 Quant Title : GC EXTRACTABLES  
 QLast Update : Sat Mar 20 01:42:16 2021  
 Response via : Initial Calibration  
 Integrator: ChemStation 6890 Scale Mode: Small noise peaks clipped

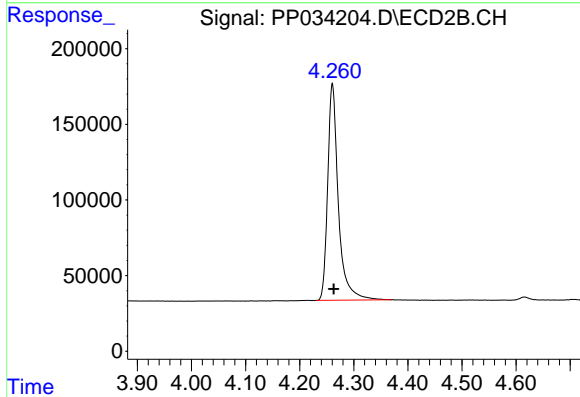
Volume Inj. : 2 µl  
 Signal #1 Phase : ZB-MR1 Signal #2 Phase: ZB-MR2  
 Signal #1 Info : 30Mx0.32mmx 0.50µ Signal #2 Info : 30M x 0.32mm x 0.25µm



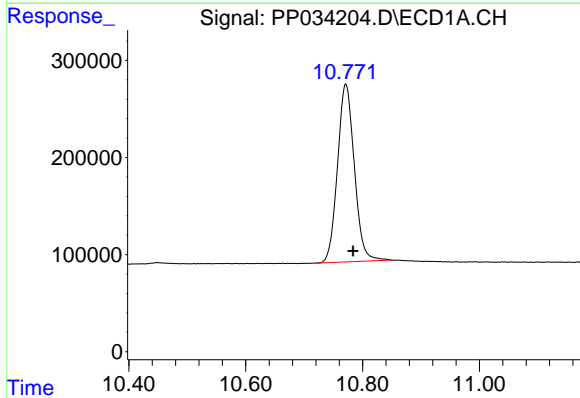


#1 Tetrachloro-m-xylene  
 R.T.: 4.849 min  
 Delta R.T.: -0.003 min  
 Response: 3932666  
 Conc: 46.81 ng/ml

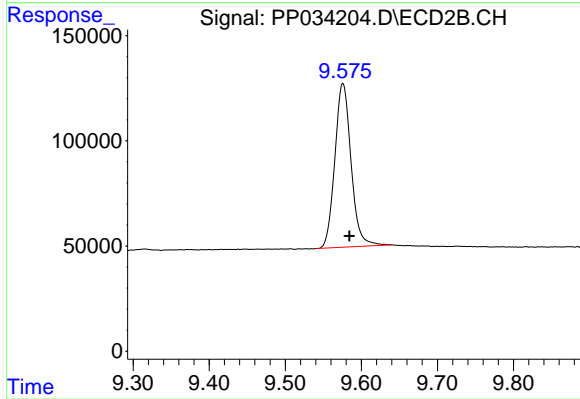
Instrument :  
 ECD\_P  
 ClientSampleId :  
 AR1254CCC500



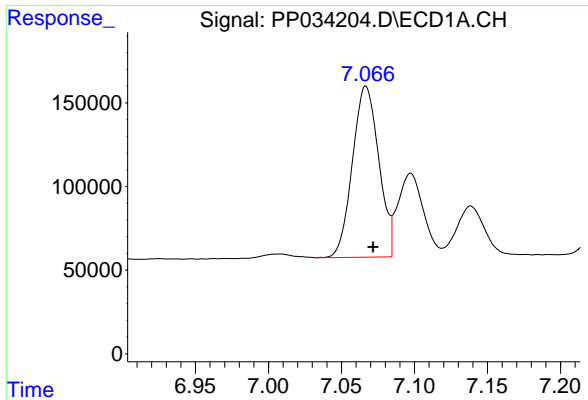
#1 Tetrachloro-m-xylene  
 R.T.: 4.260 min  
 Delta R.T.: -0.002 min  
 Response: 1964811  
 Conc: 44.40 ng/ml



#2 Decachlorobiphenyl  
 R.T.: 10.771 min  
 Delta R.T.: -0.013 min  
 Response: 3664635  
 Conc: 46.70 ng/ml



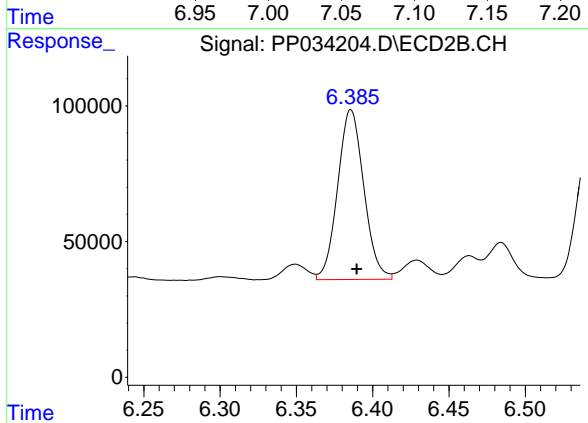
#2 Decachlorobiphenyl  
 R.T.: 9.576 min  
 Delta R.T.: -0.009 min  
 Response: 1155061  
 Conc: 43.77 ng/ml



#26 AR-1254-1

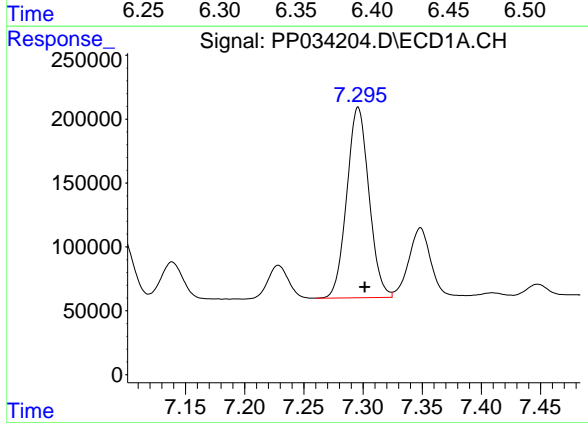
R.T.: 7.067 min  
 Delta R.T.: -0.005 min  
 Response: 1283974  
 Conc: 469.12 ng/ml

Instrument :  
 ECD\_P  
 ClientSampleId :  
 AR1254CCC500



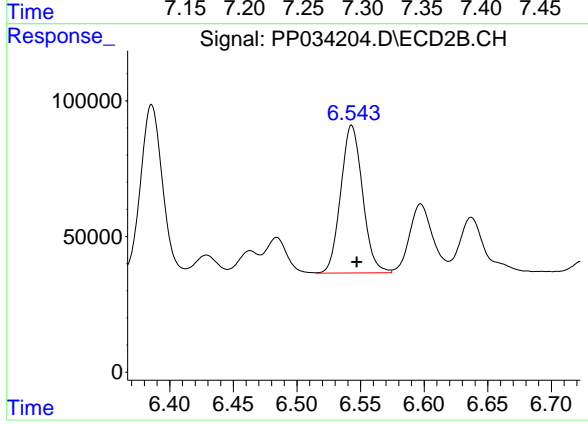
#26 AR-1254-1

R.T.: 6.386 min  
 Delta R.T.: -0.004 min  
 Response: 746728  
 Conc: 445.31 ng/ml



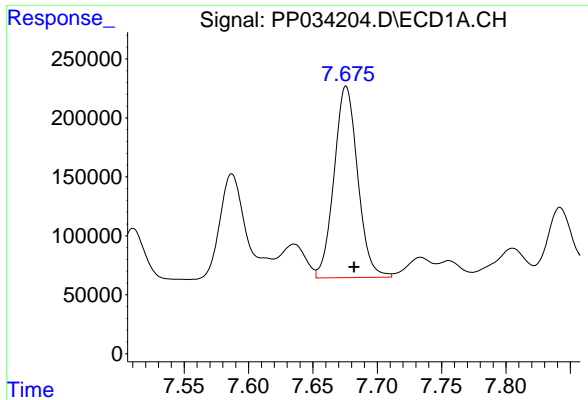
#27 AR-1254-2

R.T.: 7.296 min  
 Delta R.T.: -0.005 min  
 Response: 1946570  
 Conc: 467.47 ng/ml



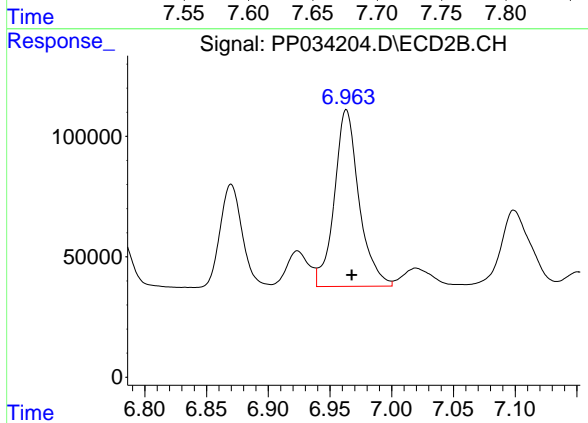
#27 AR-1254-2

R.T.: 6.543 min  
 Delta R.T.: -0.004 min  
 Response: 649704  
 Conc: 448.02 ng/ml

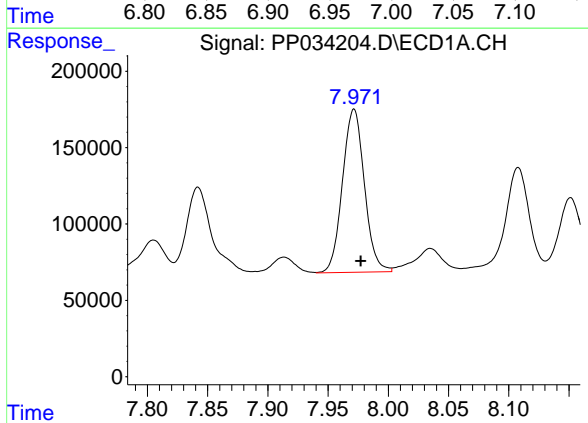


#28 AR-1254-3  
 R.T.: 7.676 min  
 Delta R.T.: -0.006 min  
 Response: 2072271  
 Conc: 477.13 ng/ml

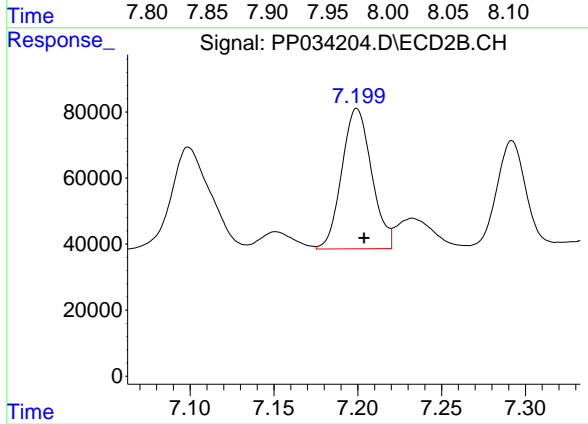
Instrument :  
 ECD\_P  
 ClientSampleId :  
 AR1254CCC500



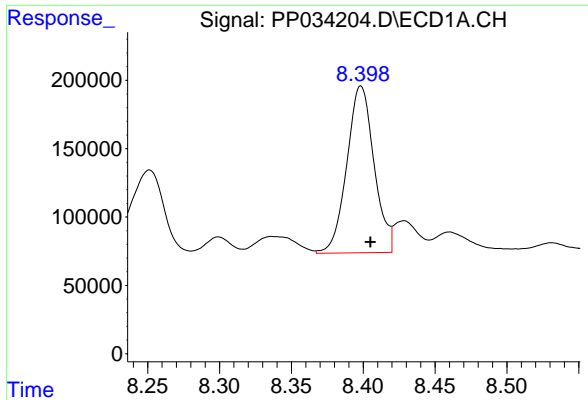
#28 AR-1254-3  
 R.T.: 6.963 min  
 Delta R.T.: -0.004 min  
 Response: 1020781  
 Conc: 445.73 ng/ml



#29 AR-1254-4  
 R.T.: 7.972 min  
 Delta R.T.: -0.006 min  
 Response: 1354581  
 Conc: 466.59 ng/ml



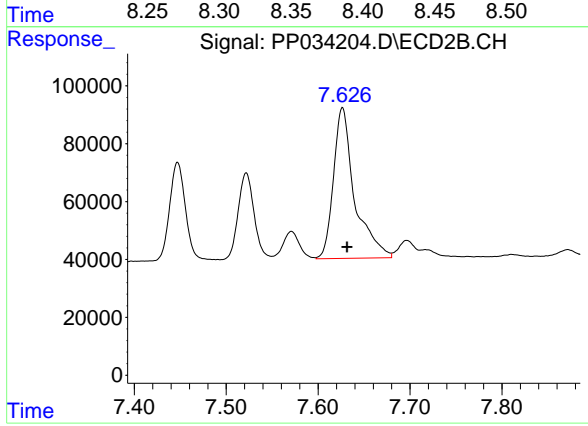
#29 AR-1254-4  
 R.T.: 7.199 min  
 Delta R.T.: -0.004 min  
 Response: 526022  
 Conc: 439.91 ng/ml



#30 AR-1254-5

R.T.: 8.398 min  
Delta R.T.: -0.007 min  
Response: 1611464  
Conc: 482.73 ng/ml

Instrument :  
ECD\_P  
ClientSampleId :  
AR1254CCC500



#30 AR-1254-5

R.T.: 7.627 min  
Delta R.T.: -0.005 min  
Response: 832095  
Conc: 450.64 ng/ml