

Data Path : Z:\pestpcbsrv\HPCHEM1\ECD_P\Data\PP032221\
 Data File : PP034209.D
 Signal(s) : Signal #1: ECD1A.CH Signal #2: ECD2B.CH
 Acq On : 22 Mar 2021 13:34
 Operator : DD\AJ
 Sample : M1727-02 10X
 Misc :
 ALS Vial : 9 Sample Multiplier: 1

Instrument :
 ECD_P
 ClientSampleId :
 KZZ30P-END-2

Integration File signal 1: autoint1.e
 Integration File signal 2: autoint2.e
 Quant Time: Mar 23 01:56:09 2021
 Quant Method : Z:\pestpcbsrv\HPCHEM1\ECD_P\methods\PP031821.M
 Quant Title : GC EXTRACTABLES
 QLast Update : Sat Mar 20 01:42:16 2021
 Response via : Initial Calibration
 Integrator: ChemStation 6890 Scale Mode: Small noise peaks clipped

Volume Inj. : 2 µl
 Signal #1 Phase : ZB-MR1 Signal #2 Phase: ZB-MR2
 Signal #1 Info : 30Mx0.32mmx 0.50µ Signal #2 Info : 30M x 0.32mm x 0.25µm

Compound	RT#1	RT#2	Resp#1	Resp#2	ng/ml	ng/ml

System Monitoring Compounds						
1) SA Tetrachlo...	4.848	4.260	167414	93926	1.993	2.122
2) SA Decachlor...	10.775	9.578	202134	59741	2.576	2.264
Target Compounds						
26) L6 AR-1254-1	7.067	6.386	2035009	1221452	743.525	728.405
27) L6 AR-1254-2	7.296	6.542	3133325	1043812	752.472	719.781
28) L6 AR-1254-3	7.676	6.963	3360187	1591311	773.664	694.858
29) L6 AR-1254-4	7.972	7.199	2023403	787250	696.970	658.371
30) L6 AR-1254-5	8.400	7.626	2225085	1101699	666.542	596.656

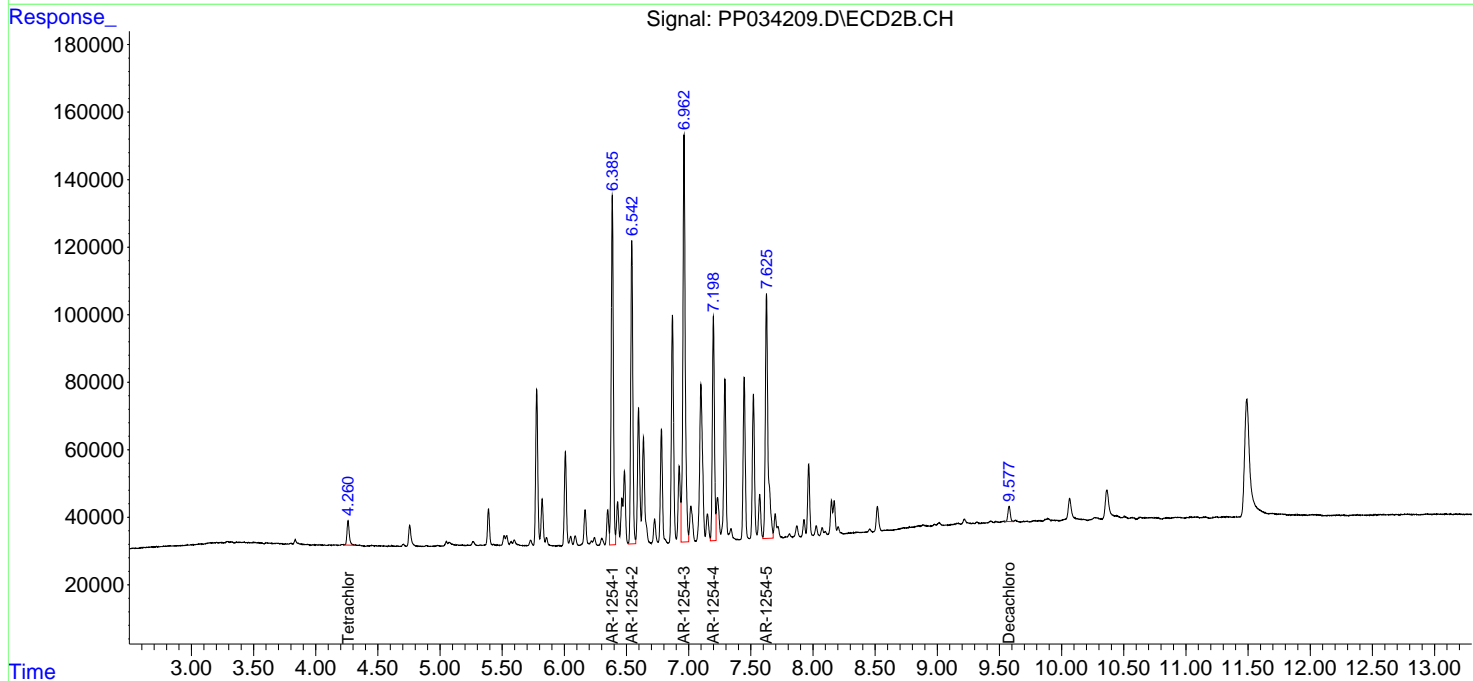
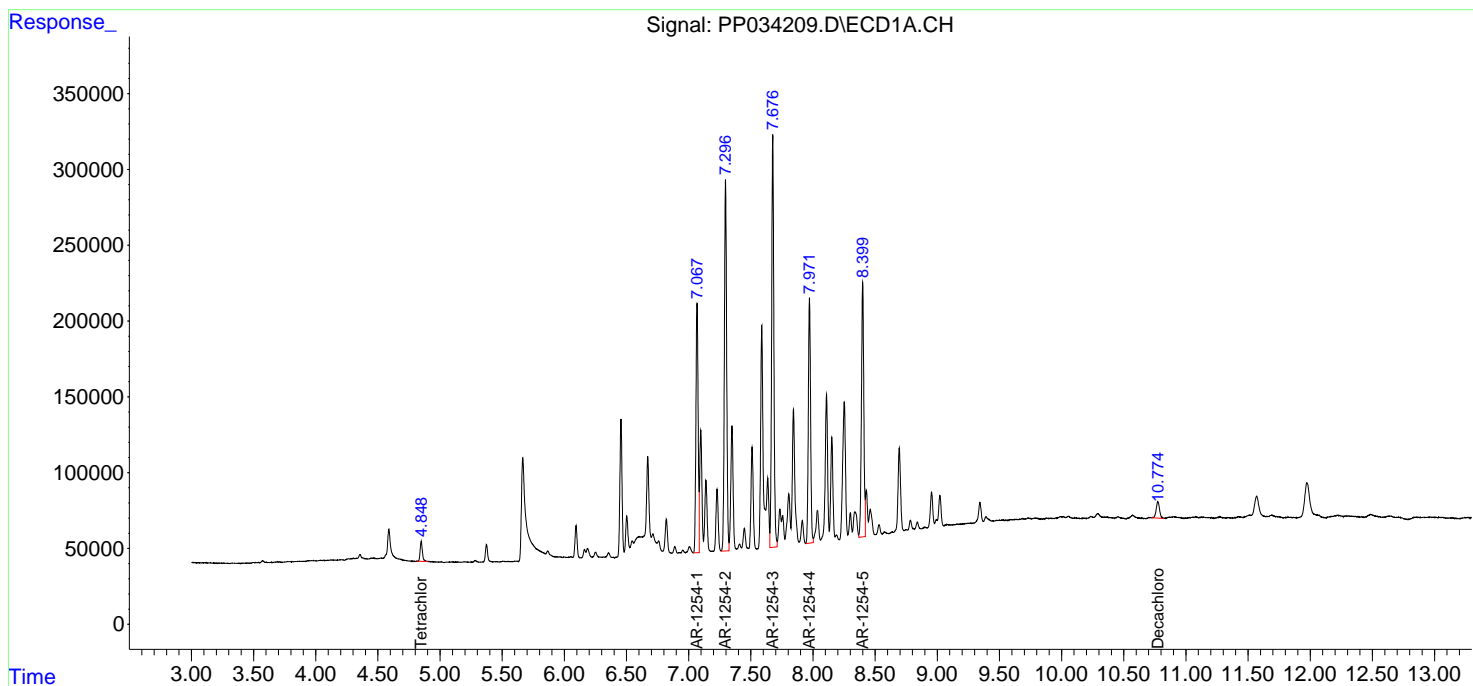
(f)=RT Delta > 1/2 Window (#)=Amounts differ by > 25% (m)=manual int.

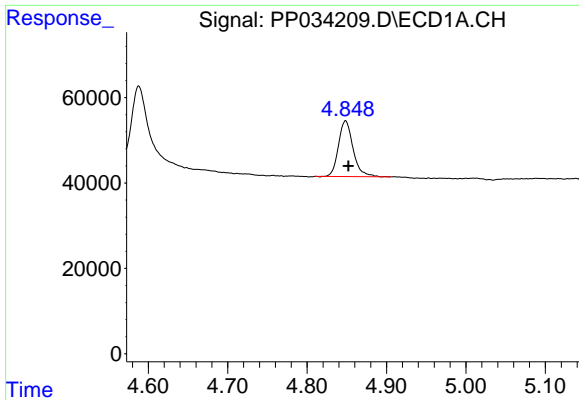
Data Path : Z:\pestpcbsrv\HPCHEM1\ECD_P\Data\PP032221\
 Data File : PP034209.D
 Signal(s) : Signal #1: ECD1A.CH Signal #2: ECD2B.CH
 Acq On : 22 Mar 2021 13:34
 Operator : DD\AJ
 Sample : M1727-02 10X
 Misc :
 ALS Vial : 9 Sample Multiplier: 1

Instrument :
 ECD_P
 ClientSampled :
 KZZ30P-END-2

Integration File signal 1: autoint1.e
 Integration File signal 2: autoint2.e
 Quant Time: Mar 23 01:56:09 2021
 Quant Method : Z:\pestpcbsrv\HPCHEM1\ECD_P\methods\PP031821.M
 Quant Title : GC EXTRACTABLES
 QLast Update : Sat Mar 20 01:42:16 2021
 Response via : Initial Calibration
 Integrator: ChemStation 6890 Scale Mode: Small noise peaks clipped

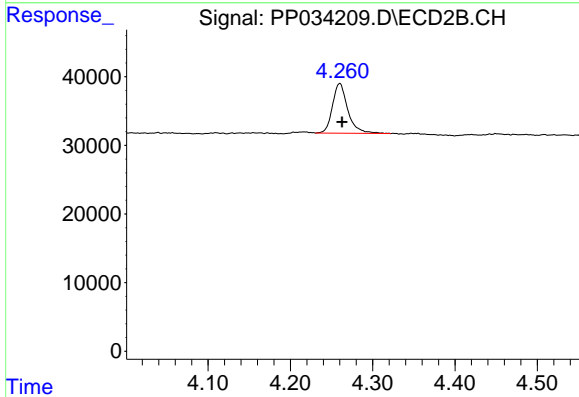
Volume Inj. : 2 µl
 Signal #1 Phase : ZB-MR1 Signal #2 Phase: ZB-MR2
 Signal #1 Info : 30Mx0.32mmx 0.50µ Signal #2 Info : 30M x 0.32mm x 0.25µm



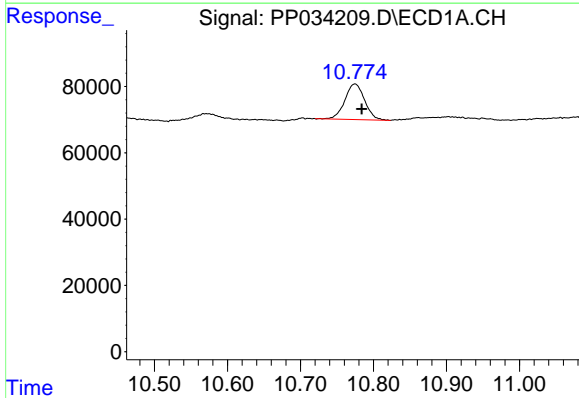


#1 Tetrachloro-m-xylene
 R.T.: 4.848 min
 Delta R.T.: -0.004 min
 Response: 167414
 Conc: 1.99 ng/ml

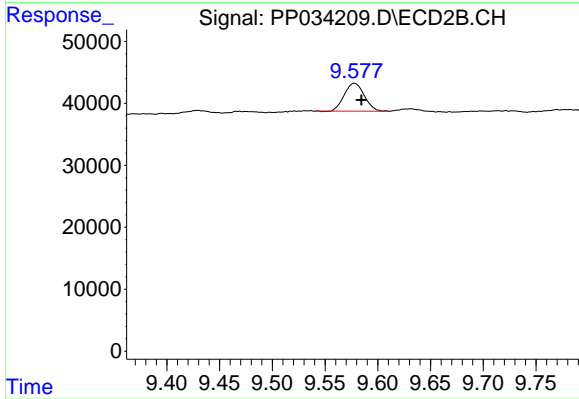
Instrument :
 ECD_P
 ClientSampleId :
 KZZ30P-END-2



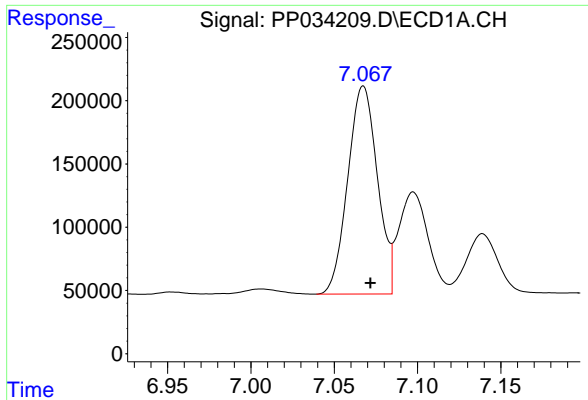
#1 Tetrachloro-m-xylene
 R.T.: 4.260 min
 Delta R.T.: -0.003 min
 Response: 93926
 Conc: 2.12 ng/ml



#2 Decachlorobiphenyl
 R.T.: 10.775 min
 Delta R.T.: -0.009 min
 Response: 202134
 Conc: 2.58 ng/ml



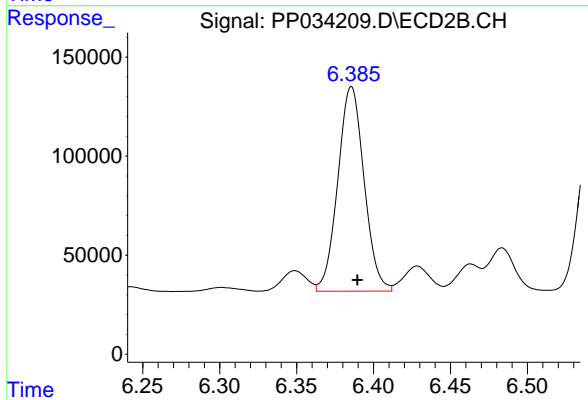
#2 Decachlorobiphenyl
 R.T.: 9.578 min
 Delta R.T.: -0.007 min
 Response: 59741
 Conc: 2.26 ng/ml



#26 AR-1254-1

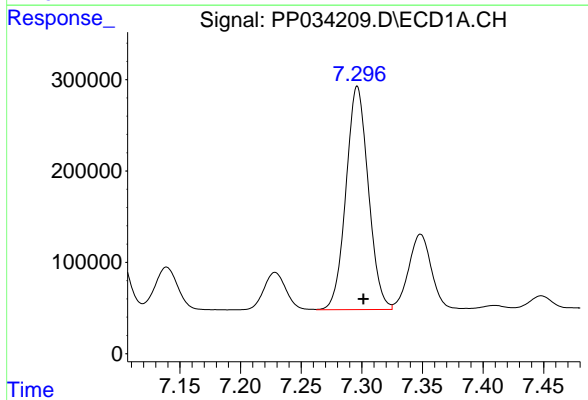
R.T.: 7.067 min
 Delta R.T.: -0.004 min
 Response: 2035009
 Conc: 743.53 ng/ml

Instrument :
 ECD_P
 ClientSampleId :
 KZZ30P-END-2



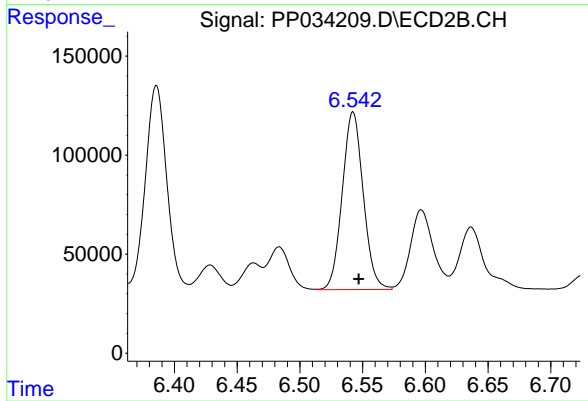
#26 AR-1254-1

R.T.: 6.386 min
 Delta R.T.: -0.004 min
 Response: 1221452
 Conc: 728.40 ng/ml



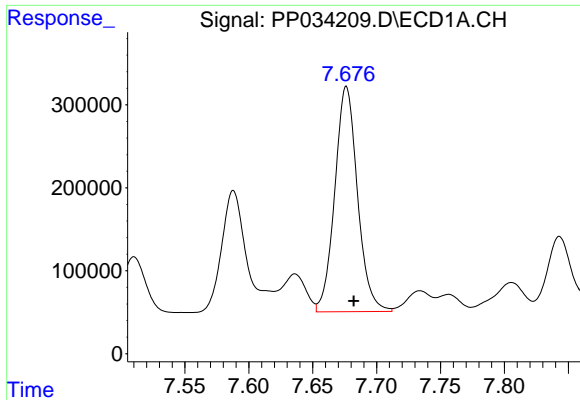
#27 AR-1254-2

R.T.: 7.296 min
 Delta R.T.: -0.005 min
 Response: 3133325
 Conc: 752.47 ng/ml



#27 AR-1254-2

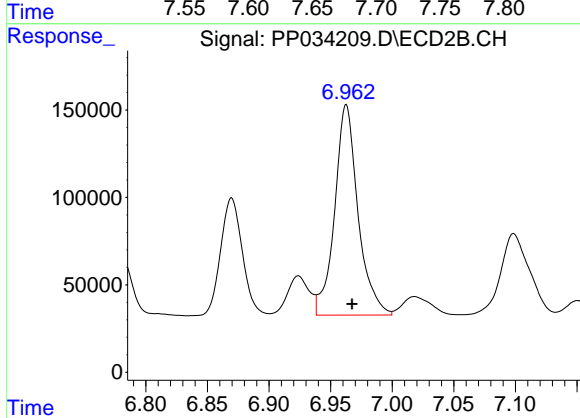
R.T.: 6.542 min
 Delta R.T.: -0.005 min
 Response: 1043812
 Conc: 719.78 ng/ml



#28 AR-1254-3

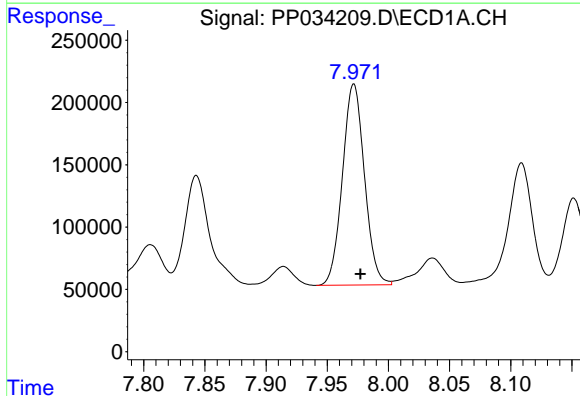
R.T.: 7.676 min
 Delta R.T.: -0.006 min
 Response: 3360187
 Conc: 773.66 ng/ml

Instrument :
 ECD_P
 ClientSampleId :
 KZZ30P-END-2



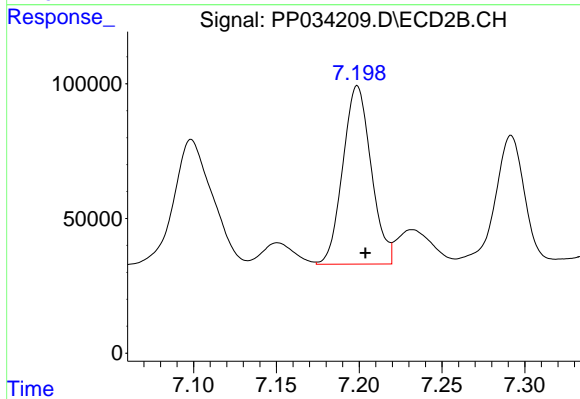
#28 AR-1254-3

R.T.: 6.963 min
 Delta R.T.: -0.005 min
 Response: 1591311
 Conc: 694.86 ng/ml



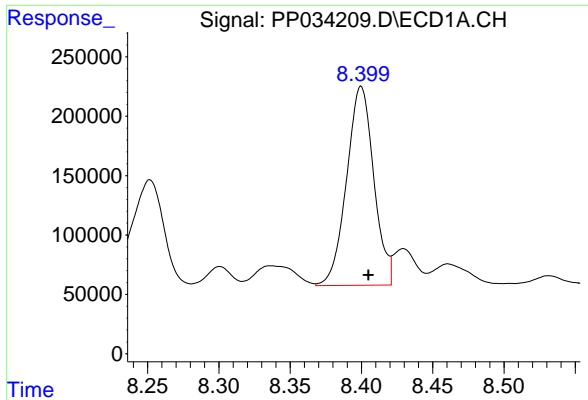
#29 AR-1254-4

R.T.: 7.972 min
 Delta R.T.: -0.005 min
 Response: 2023403
 Conc: 696.97 ng/ml



#29 AR-1254-4

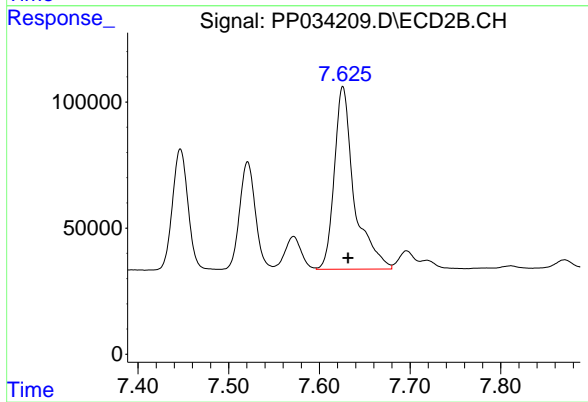
R.T.: 7.199 min
 Delta R.T.: -0.005 min
 Response: 787250
 Conc: 658.37 ng/ml



#30 AR-1254-5

R.T.: 8.400 min
Delta R.T.: -0.005 min
Response: 2225085
Conc: 666.54 ng/ml

Instrument :
ECD_P
ClientSampleId :
KZZ30P-END-2



#30 AR-1254-5

R.T.: 7.626 min
Delta R.T.: -0.006 min
Response: 1101699
Conc: 596.66 ng/ml