

Data Path : Z:\pestpcbsrv\HPCHEM1\ECD\_P\Data\PP032221\  
 Data File : PP034210.D  
 Signal(s) : Signal #1: ECD1A.CH Signal #2: ECD2B.CH  
 Acq On : 22 Mar 2021 13:51  
 Operator : DD\AJ  
 Sample : M1727-03 10X  
 Misc :  
 ALS Vial : 10 Sample Multiplier: 1

Instrument :  
 ECD\_P  
 ClientSampleId :  
 KZZ30P-END-3

Integration File signal 1: autoint1.e  
 Integration File signal 2: autoint2.e  
 Quant Time: Mar 23 01:56:38 2021  
 Quant Method : Z:\pestpcbsrv\HPCHEM1\ECD\_P\methods\PP031821.M  
 Quant Title : GC EXTRACTABLES  
 QLast Update : Sat Mar 20 01:42:16 2021  
 Response via : Initial Calibration  
 Integrator: ChemStation 6890 Scale Mode: Small noise peaks clipped

Volume Inj. : 2 µl  
 Signal #1 Phase : ZB-MR1 Signal #2 Phase: ZB-MR2  
 Signal #1 Info : 30Mx0.32mmx 0.50µ Signal #2 Info : 30M x 0.32mm x 0.25µm

Compound	RT#1	RT#2	Resp#1	Resp#2	ng/ml	ng/ml
-----						
System Monitoring Compounds						
1) SA Tetrachlo...	4.849	4.260	150546	94964	1.792	2.146
2) SA Decachlor...	10.776	9.578	183114	62256	2.333	2.359
Target Compounds						
26) L6 AR-1254-1	7.068	6.386	1249896	800464	456.671	477.352
27) L6 AR-1254-2	7.297	6.543	1910544	688665	458.819	474.883
28) L6 AR-1254-3	7.677	6.964	1952455	1029027	449.542	449.332
29) L6 AR-1254-4	7.972	7.200	1227295	514819	422.747	430.539
30) L6 AR-1254-5	8.399	7.626	1334913	708177	399.884	383.533
-----						

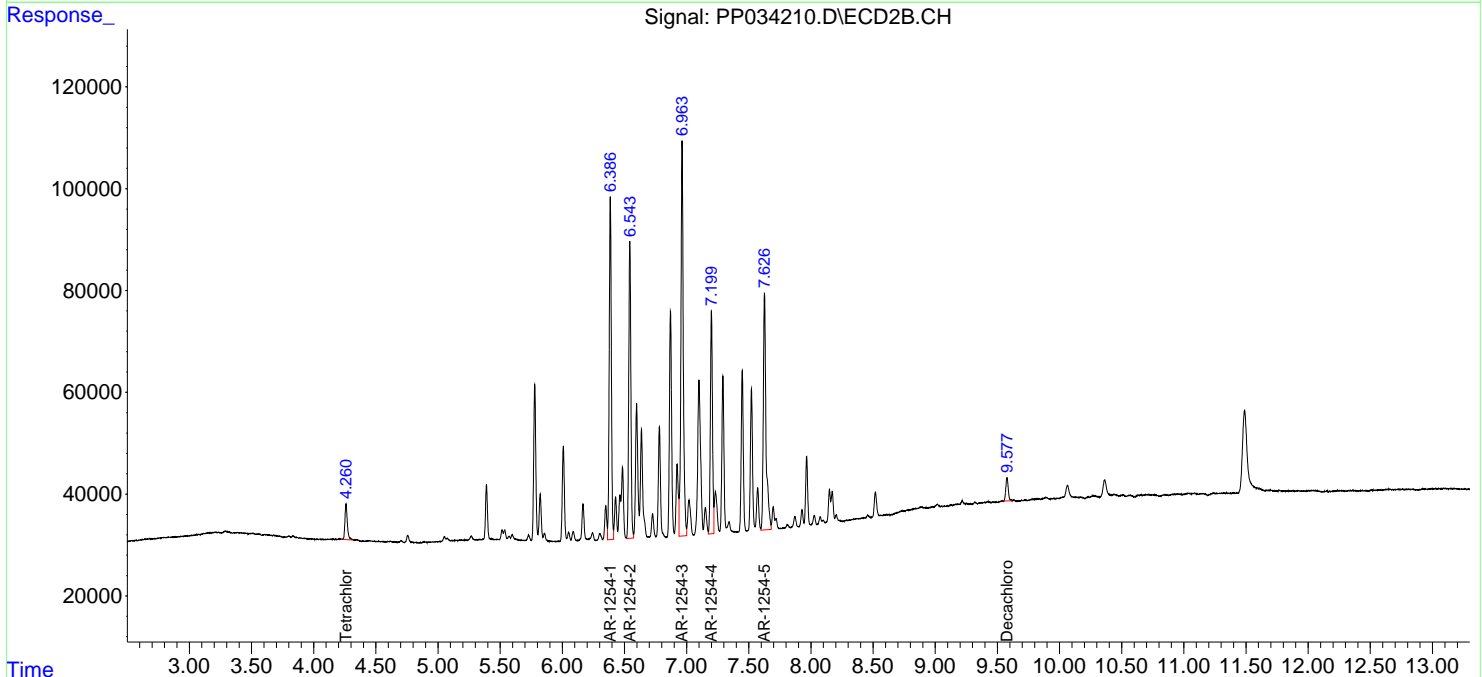
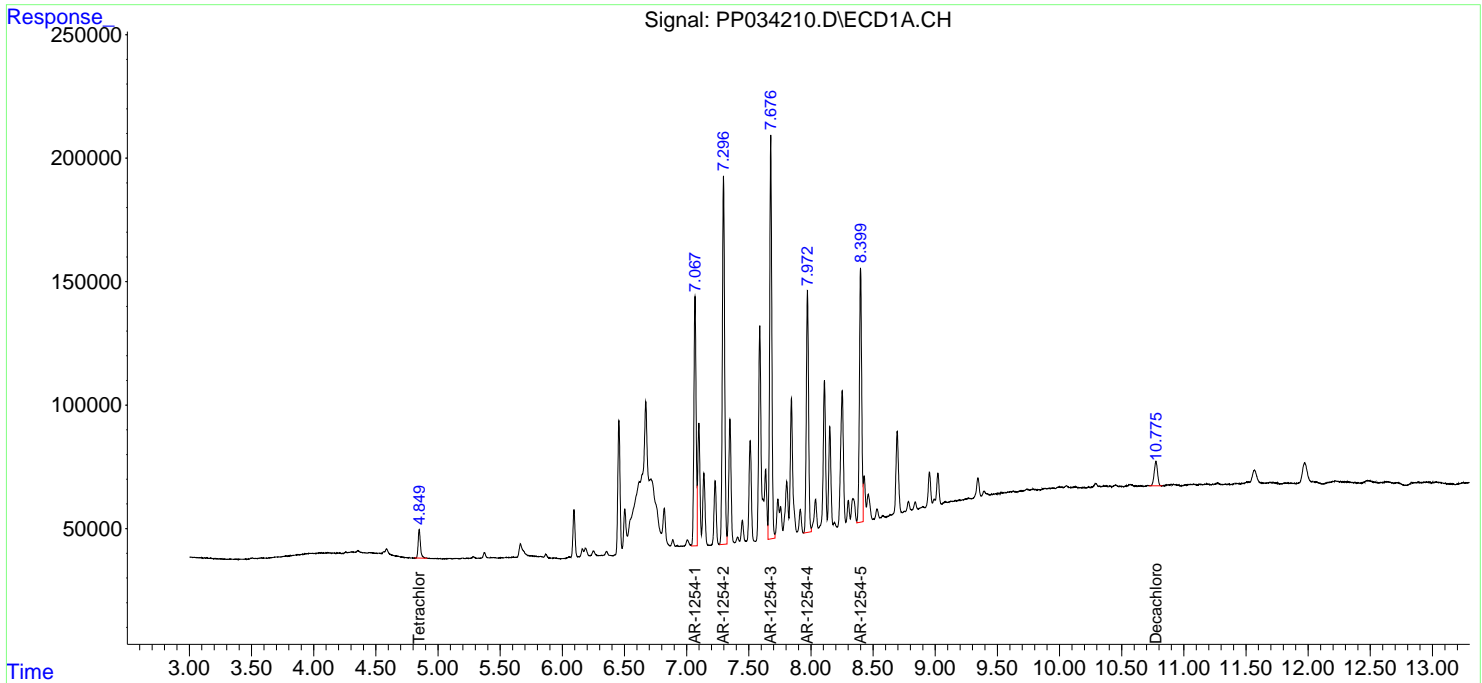
(f)=RT Delta > 1/2 Window (#)=Amounts differ by > 25% (m)=manual int.

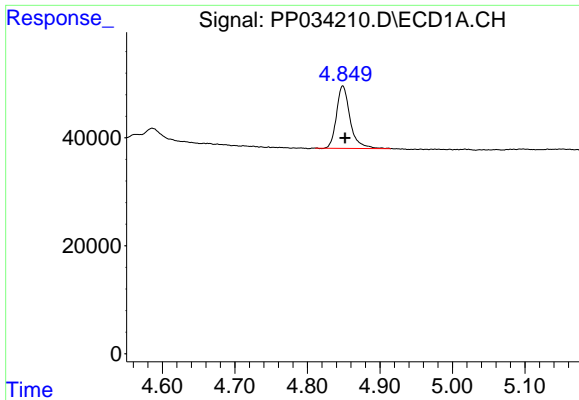
Data Path : Z:\pestpcbsrv\HPCHEM1\ECD\_P\Data\PP032221\  
 Data File : PP034210.D  
 Signal(s) : Signal #1: ECD1A.CH Signal #2: ECD2B.CH  
 Acq On : 22 Mar 2021 13:51  
 Operator : DD\AJ  
 Sample : M1727-03 10X  
 Misc :  
 ALS Vial : 10 Sample Multiplier: 1

Instrument :  
 ECD\_P  
 ClientSampled :  
 KZZ30P-END-3

Integration File signal 1: autoint1.e  
 Integration File signal 2: autoint2.e  
 Quant Time: Mar 23 01:56:38 2021  
 Quant Method : Z:\pestpcbsrv\HPCHEM1\ECD\_P\methods\PP031821.M  
 Quant Title : GC EXTRACTABLES  
 QLast Update : Sat Mar 20 01:42:16 2021  
 Response via : Initial Calibration  
 Integrator: ChemStation 6890 Scale Mode: Small noise peaks clipped

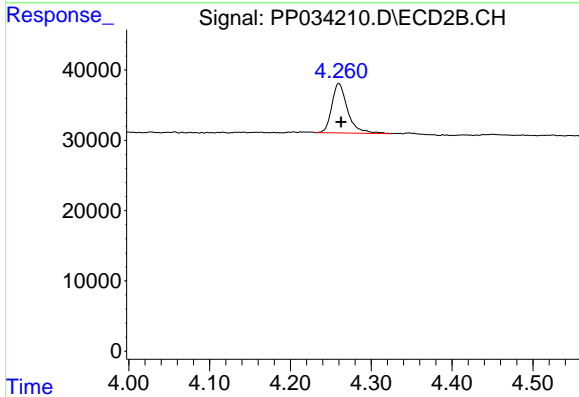
Volume Inj. : 2 µl  
 Signal #1 Phase : ZB-MR1 Signal #2 Phase: ZB-MR2  
 Signal #1 Info : 30Mx0.32mmx 0.50µ Signal #2 Info : 30M x 0.32mm x 0.25µm



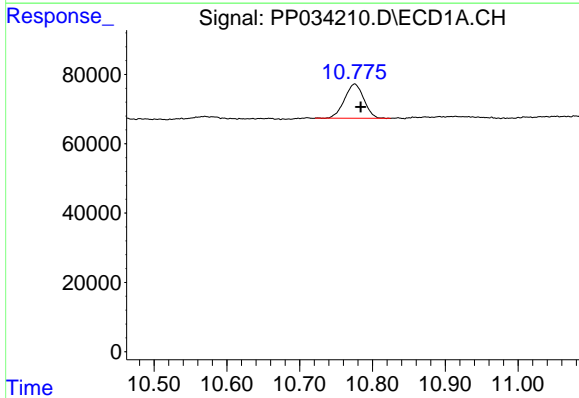


#1 Tetrachloro-m-xylene  
 R.T.: 4.849 min  
 Delta R.T.: -0.003 min  
 Response: 150546  
 Conc: 1.79 ng/ml

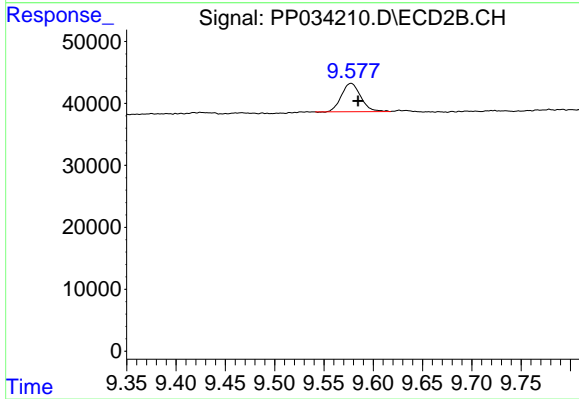
Instrument :  
 ECD\_P  
 ClientSampleId :  
 KZZ30P-END-3



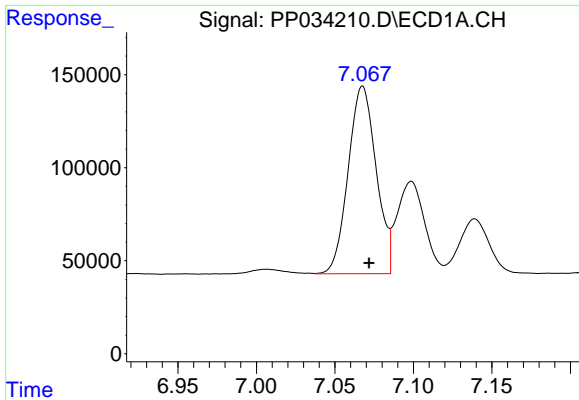
#1 Tetrachloro-m-xylene  
 R.T.: 4.260 min  
 Delta R.T.: -0.003 min  
 Response: 94964  
 Conc: 2.15 ng/ml



#2 Decachlorobiphenyl  
 R.T.: 10.776 min  
 Delta R.T.: -0.009 min  
 Response: 183114  
 Conc: 2.33 ng/ml



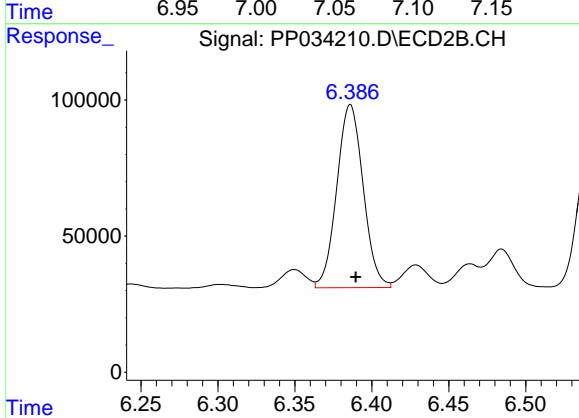
#2 Decachlorobiphenyl  
 R.T.: 9.578 min  
 Delta R.T.: -0.007 min  
 Response: 62256  
 Conc: 2.36 ng/ml



#26 AR-1254-1

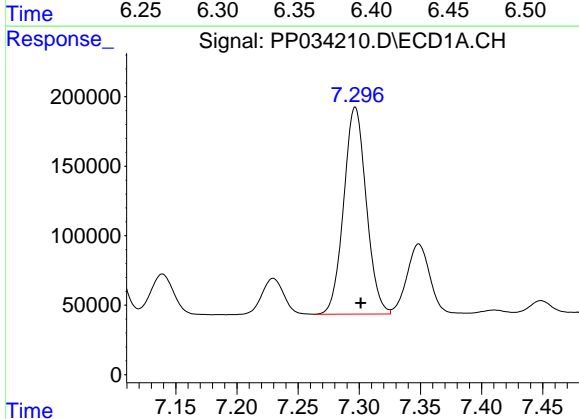
R.T.: 7.068 min  
 Delta R.T.: -0.004 min  
 Response: 1249896  
 Conc: 456.67 ng/ml

Instrument :  
 ECD\_P  
 ClientSampleId :  
 KZZ30P-END-3



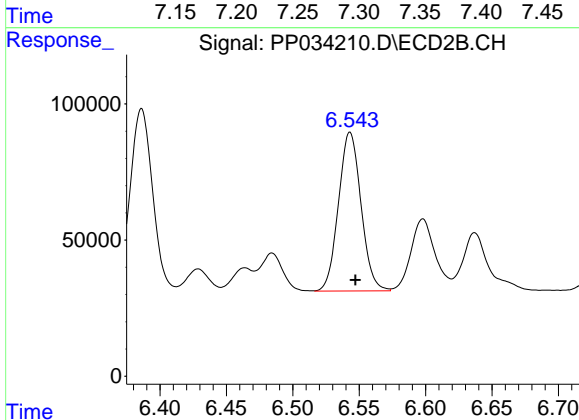
#26 AR-1254-1

R.T.: 6.386 min  
 Delta R.T.: -0.003 min  
 Response: 800464  
 Conc: 477.35 ng/ml



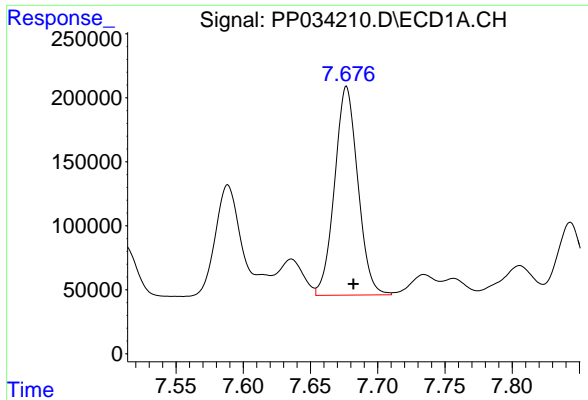
#27 AR-1254-2

R.T.: 7.297 min  
 Delta R.T.: -0.005 min  
 Response: 1910544  
 Conc: 458.82 ng/ml



#27 AR-1254-2

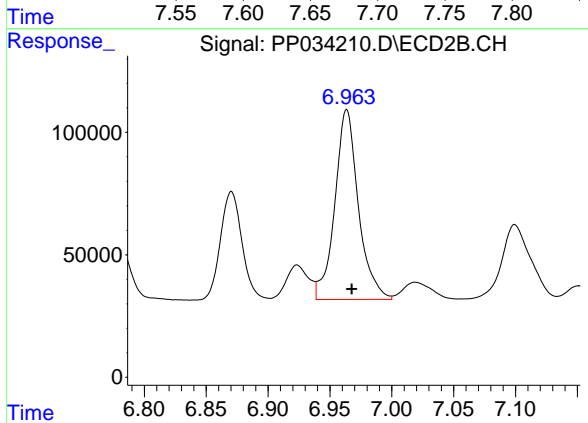
R.T.: 6.543 min  
 Delta R.T.: -0.004 min  
 Response: 688665  
 Conc: 474.88 ng/ml



#28 AR-1254-3

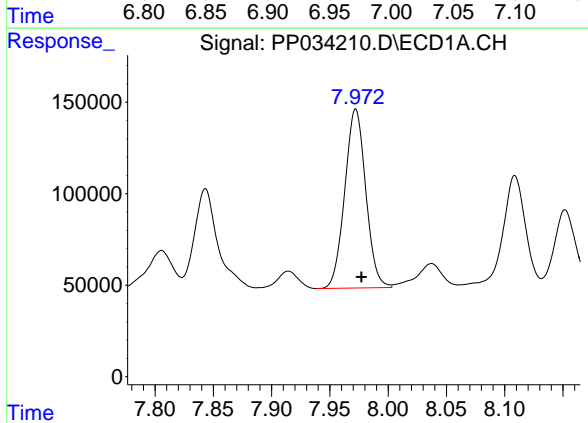
R.T.: 7.677 min  
 Delta R.T.: -0.005 min  
 Response: 1952455  
 Conc: 449.54 ng/ml

Instrument :  
 ECD\_P  
 ClientSampleId :  
 KZZ30P-END-3



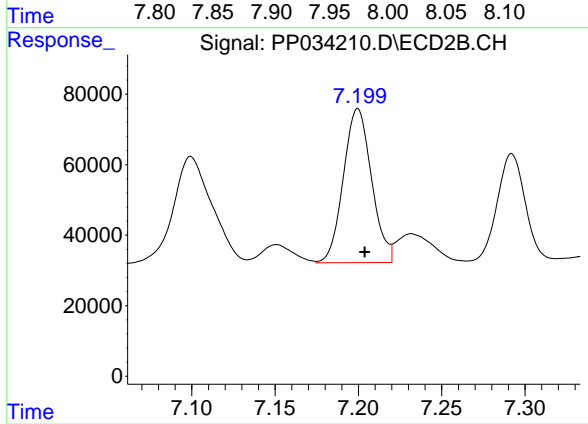
#28 AR-1254-3

R.T.: 6.964 min  
 Delta R.T.: -0.004 min  
 Response: 1029027  
 Conc: 449.33 ng/ml



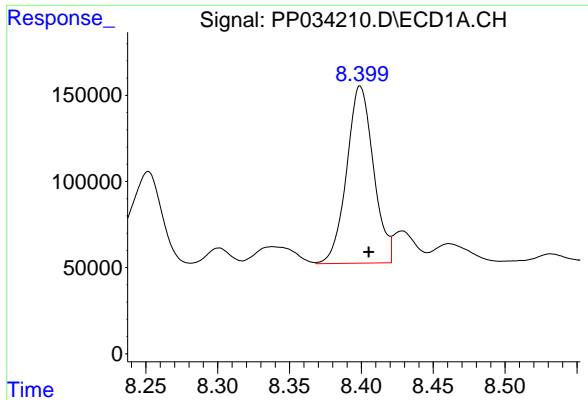
#29 AR-1254-4

R.T.: 7.972 min  
 Delta R.T.: -0.005 min  
 Response: 1227295  
 Conc: 422.75 ng/ml



#29 AR-1254-4

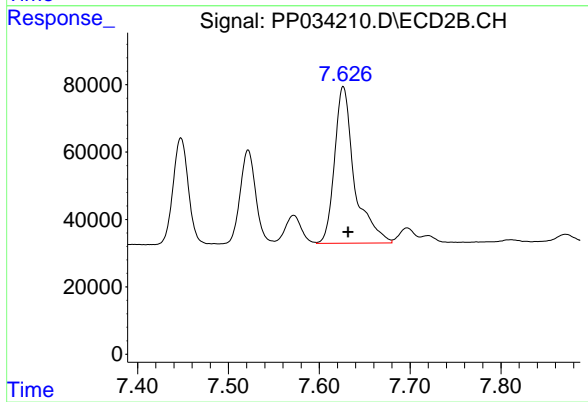
R.T.: 7.200 min  
 Delta R.T.: -0.004 min  
 Response: 514819  
 Conc: 430.54 ng/ml



#30 AR-1254-5

R.T.: 8.399 min  
Delta R.T.: -0.006 min  
Response: 1334913  
Conc: 399.88 ng/ml

Instrument :  
ECD\_P  
ClientSampleId :  
KZZ30P-END-3



#30 AR-1254-5

R.T.: 7.626 min  
Delta R.T.: -0.005 min  
Response: 708177  
Conc: 383.53 ng/ml