

Data Path : Z:\pestpcbsrv\HPCHEM1\ECD_P\Data\PP032221\
 Data File : PP034230.D
 Signal(s) : Signal #1: ECD1A.CH Signal #2: ECD2B.CH
 Acq On : 22 Mar 2021 19:28
 Operator : DD\AJ
 Sample : M1660-13
 Misc :
 ALS Vial : 26 Sample Multiplier: 1

Instrument :
 ECD_P
 ClientSampleId :
 X127-4C

Integration File signal 1: autoint1.e
 Integration File signal 2: autoint2.e
 Quant Time: Mar 23 02:05:41 2021
 Quant Method : Z:\pestpcbsrv\HPCHEM1\ECD_P\methods\PP031821.M
 Quant Title : GC EXTRACTABLES
 QLast Update : Sat Mar 20 01:42:16 2021
 Response via : Initial Calibration
 Integrator: ChemStation 6890 Scale Mode: Small noise peaks clipped

Volume Inj. : 2 µl
 Signal #1 Phase : ZB-MR1 Signal #2 Phase: ZB-MR2
 Signal #1 Info : 30Mx0.32mmx 0.50µ Signal #2 Info : 30M x 0.32mm x 0.25µm

Compound	RT#1	RT#2	Resp#1	Resp#2	ng/ml	ng/ml

System Monitoring Compounds						
1) SA Tetrachlo...	4.849	4.261	1177471	693227	14.016	15.665
2) SA Decachlor...	10.772	9.574	1019363	464201	12.989	17.591 #
Target Compounds						
26) L6 AR-1254-1	7.067	6.387	798012	409179	291.567	244.011
27) L6 AR-1254-2	7.296	6.544	1204995	515122	289.381	355.212
28) L6 AR-1254-3	7.677	6.964	2701164	1624775	621.928	709.470
29) L6 AR-1254-4	7.971	7.200	1254822	502833	432.229	420.515
30) L6 AR-1254-5	8.399	7.627	5464611	5745699	1636.969	3111.744 #

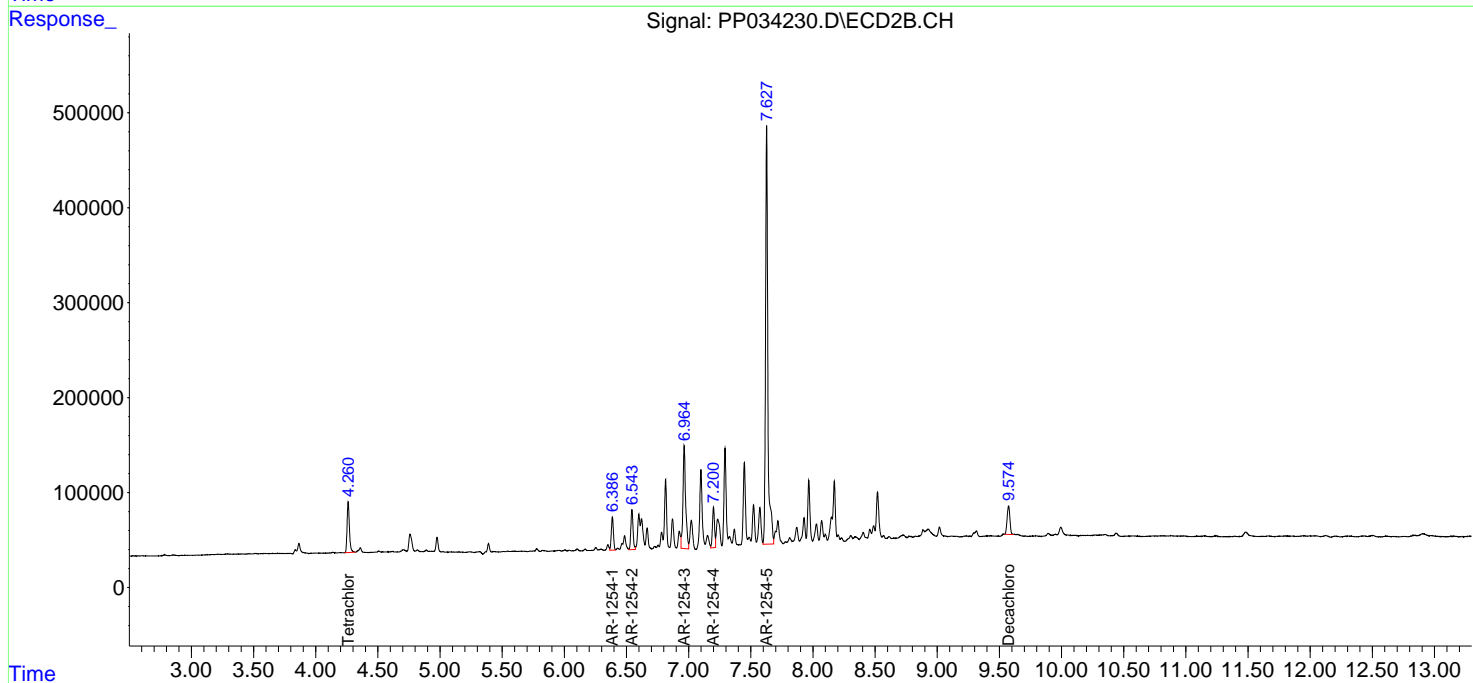
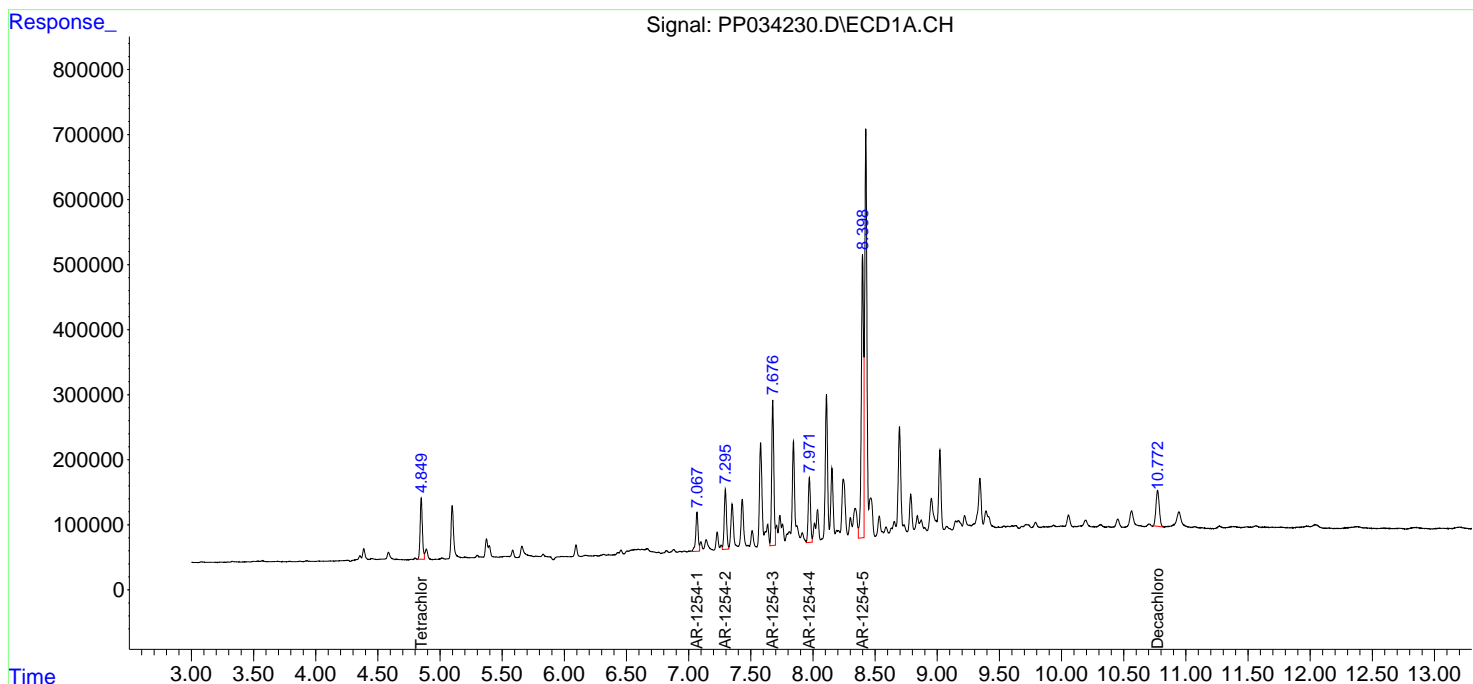
(f)=RT Delta > 1/2 Window (#)=Amounts differ by > 25% (m)=manual int.

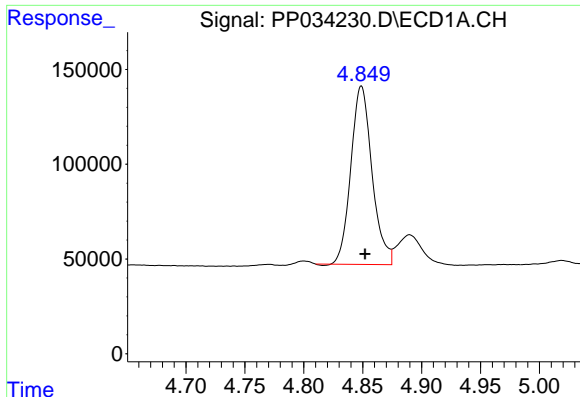
Data Path : Z:\pestpcbsrv\HPCHEM1\ECD_P\Data\PP032221\
 Data File : PP034230.D
 Signal(s) : Signal #1: ECD1A.CH Signal #2: ECD2B.CH
 Acq On : 22 Mar 2021 19:28
 Operator : DD\AJ
 Sample : M1660-13
 Misc :
 ALS Vial : 26 Sample Multiplier: 1

Instrument :
 ECD_P
 ClientSampled :
 X127-4C

Integration File signal 1: autoint1.e
 Integration File signal 2: autoint2.e
 Quant Time: Mar 23 02:05:41 2021
 Quant Method : Z:\pestpcbsrv\HPCHEM1\ECD_P\methods\PP031821.M
 Quant Title : GC EXTRACTABLES
 QLast Update : Sat Mar 20 01:42:16 2021
 Response via : Initial Calibration
 Integrator: ChemStation 6890 Scale Mode: Small noise peaks clipped

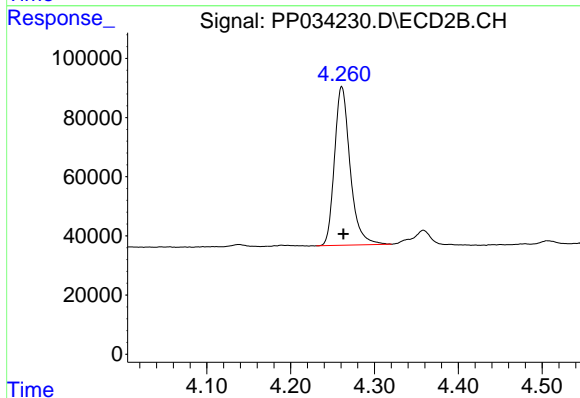
Volume Inj. : 2 µl
 Signal #1 Phase : ZB-MR1 Signal #2 Phase: ZB-MR2
 Signal #1 Info : 30Mx0.32mmx 0.50µ Signal #2 Info : 30M x 0.32mm x 0.25µm



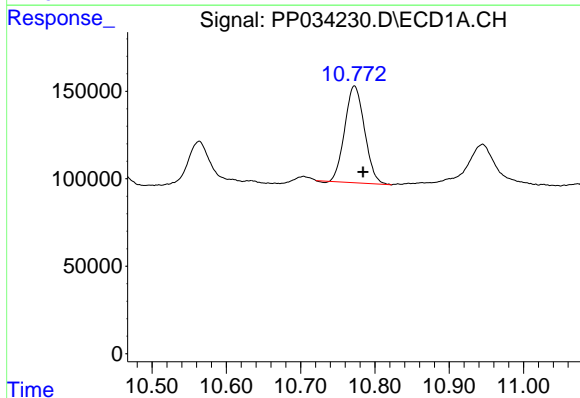


#1 Tetrachloro-m-xylene
 R.T.: 4.849 min
 Delta R.T.: -0.003 min
 Response: 1177471
 Conc: 14.02 ng/ml

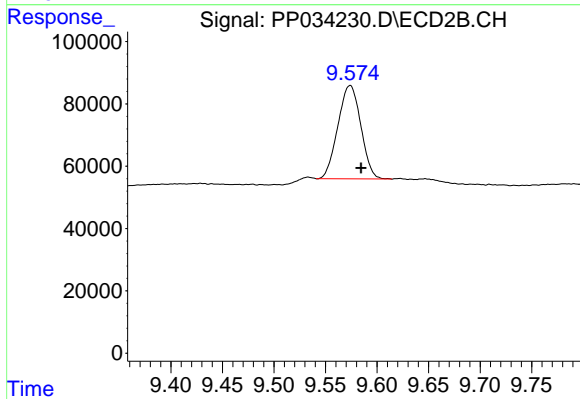
Instrument :
 ECD_P
 ClientSampleId :
 X127-4C



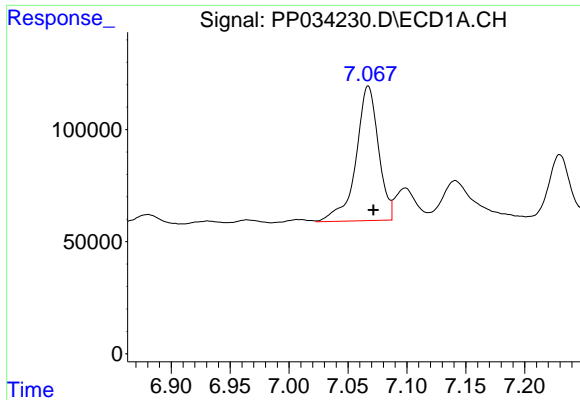
#1 Tetrachloro-m-xylene
 R.T.: 4.261 min
 Delta R.T.: -0.002 min
 Response: 693227
 Conc: 15.67 ng/ml



#2 Decachlorobiphenyl
 R.T.: 10.772 min
 Delta R.T.: -0.012 min
 Response: 1019363
 Conc: 12.99 ng/ml



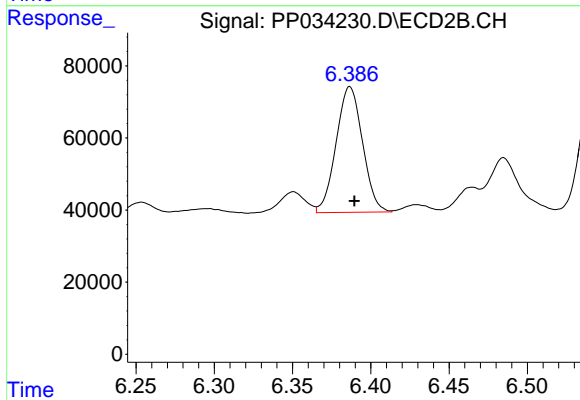
#2 Decachlorobiphenyl
 R.T.: 9.574 min
 Delta R.T.: -0.011 min
 Response: 464201
 Conc: 17.59 ng/ml



#26 AR-1254-1

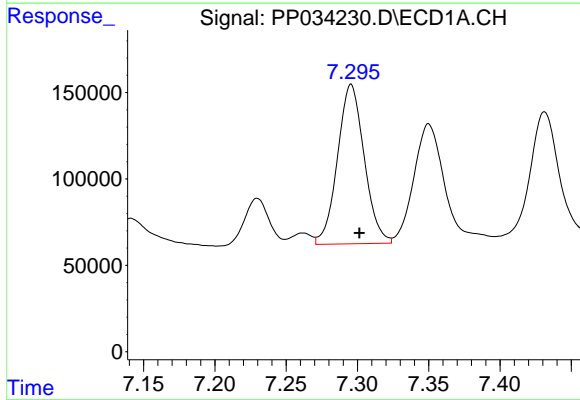
R.T.: 7.067 min
 Delta R.T.: -0.005 min
 Response: 798012
 Conc: 291.57 ng/ml

Instrument :
 ECD_P
 ClientSampleId :
 X127-4C



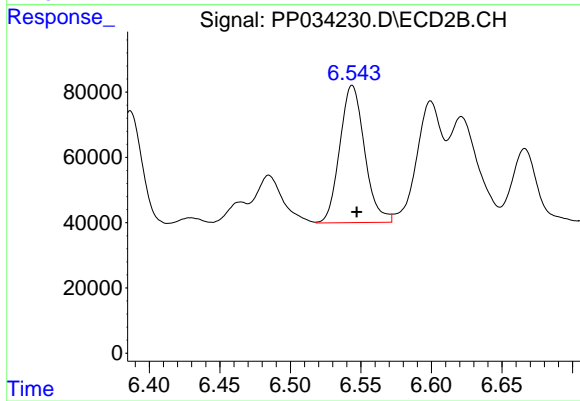
#26 AR-1254-1

R.T.: 6.387 min
 Delta R.T.: -0.003 min
 Response: 409179
 Conc: 244.01 ng/ml



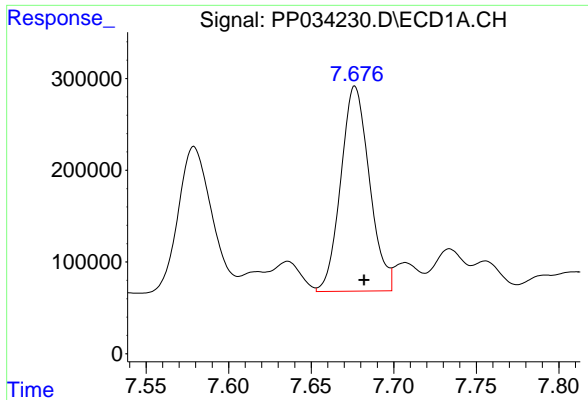
#27 AR-1254-2

R.T.: 7.296 min
 Delta R.T.: -0.006 min
 Response: 1204995
 Conc: 289.38 ng/ml



#27 AR-1254-2

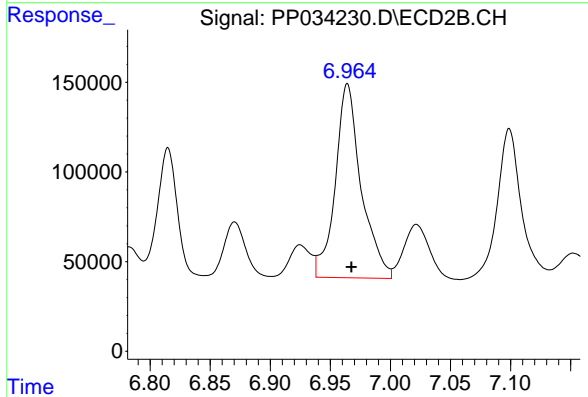
R.T.: 6.544 min
 Delta R.T.: -0.003 min
 Response: 515122
 Conc: 355.21 ng/ml



#28 AR-1254-3

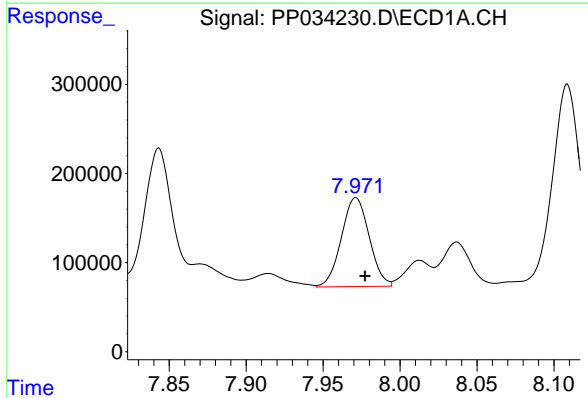
R.T.: 7.677 min
 Delta R.T.: -0.006 min
 Response: 2701164
 Conc: 621.93 ng/ml

Instrument :
 ECD_P
 ClientSampled :
 X127-4C



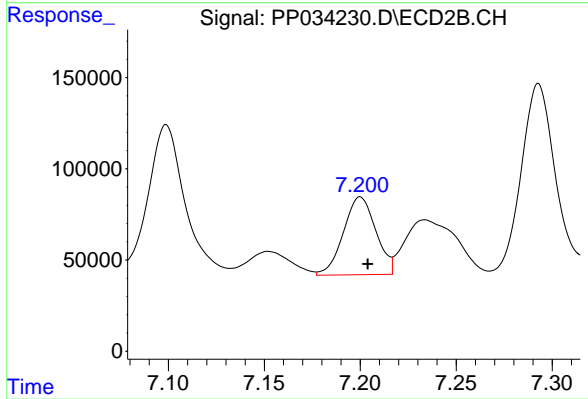
#28 AR-1254-3

R.T.: 6.964 min
 Delta R.T.: -0.003 min
 Response: 1624775
 Conc: 709.47 ng/ml



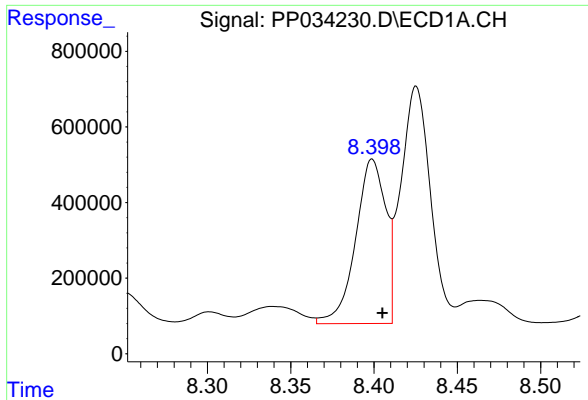
#29 AR-1254-4

R.T.: 7.971 min
 Delta R.T.: -0.006 min
 Response: 1254822
 Conc: 432.23 ng/ml



#29 AR-1254-4

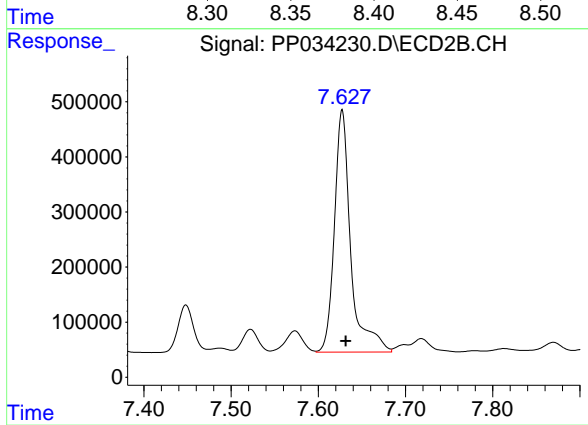
R.T.: 7.200 min
 Delta R.T.: -0.004 min
 Response: 502833
 Conc: 420.52 ng/ml



#30 AR-1254-5

R.T.: 8.399 min
Delta R.T.: -0.006 min
Response: 5464611
Conc: 1636.97 ng/ml

Instrument :
ECD_P
ClientSampleId :
X127-4C



#30 AR-1254-5

R.T.: 7.627 min
Delta R.T.: -0.004 min
Response: 5745699
Conc: 3111.74 ng/ml