

Data Path : Z:\pestpcbsrv\HPCHEM1\ECD_P\Data\PP032221\
 Data File : PP034236.D
 Signal(s) : Signal #1: ECD1A.CH Signal #2: ECD2B.CH
 Acq On : 22 Mar 2021 21:09
 Operator : DD\AJ
 Sample : M1661-03
 Misc :
 ALS Vial : 32 Sample Multiplier: 1

Instrument :
 ECD_P
 ClientSampleId :
 X127-7C

Integration File signal 1: autoint1.e
 Integration File signal 2: autoint2.e
 Quant Time: Mar 23 02:08:27 2021
 Quant Method : Z:\pestpcbsrv\HPCHEM1\ECD_P\methods\PP031821.M
 Quant Title : GC EXTRACTABLES
 QLast Update : Sat Mar 20 01:42:16 2021
 Response via : Initial Calibration
 Integrator: ChemStation 6890 Scale Mode: Small noise peaks clipped

Volume Inj. : 2 µl
 Signal #1 Phase : ZB-MR1 Signal #2 Phase: ZB-MR2
 Signal #1 Info : 30Mx0.32mmx 0.50µ Signal #2 Info : 30M x 0.32mm x 0.25µm

Compound	RT#1	RT#2	Resp#1	Resp#2	ng/ml	ng/ml

System Monitoring Compounds						
1) SA Tetrachlo...	4.849	4.260	1550579	873922	18.458	19.749
2) SA Decachlor...	10.772	9.575	1575018	606723	20.070	22.991
Target Compounds						
26) L6 AR-1254-1	7.067	6.386	214909	118968	78.521	70.946
27) L6 AR-1254-2	7.296	6.542	467968	187284	112.383	129.145
28) L6 AR-1254-3	7.676	6.963	762658	510476	175.598	222.903 #
29) L6 AR-1254-4	7.971	7.199	440249	219865	151.646	183.871
30) L6 AR-1254-5	8.399	7.626	1482778	2532942	444.178	1371.786 #

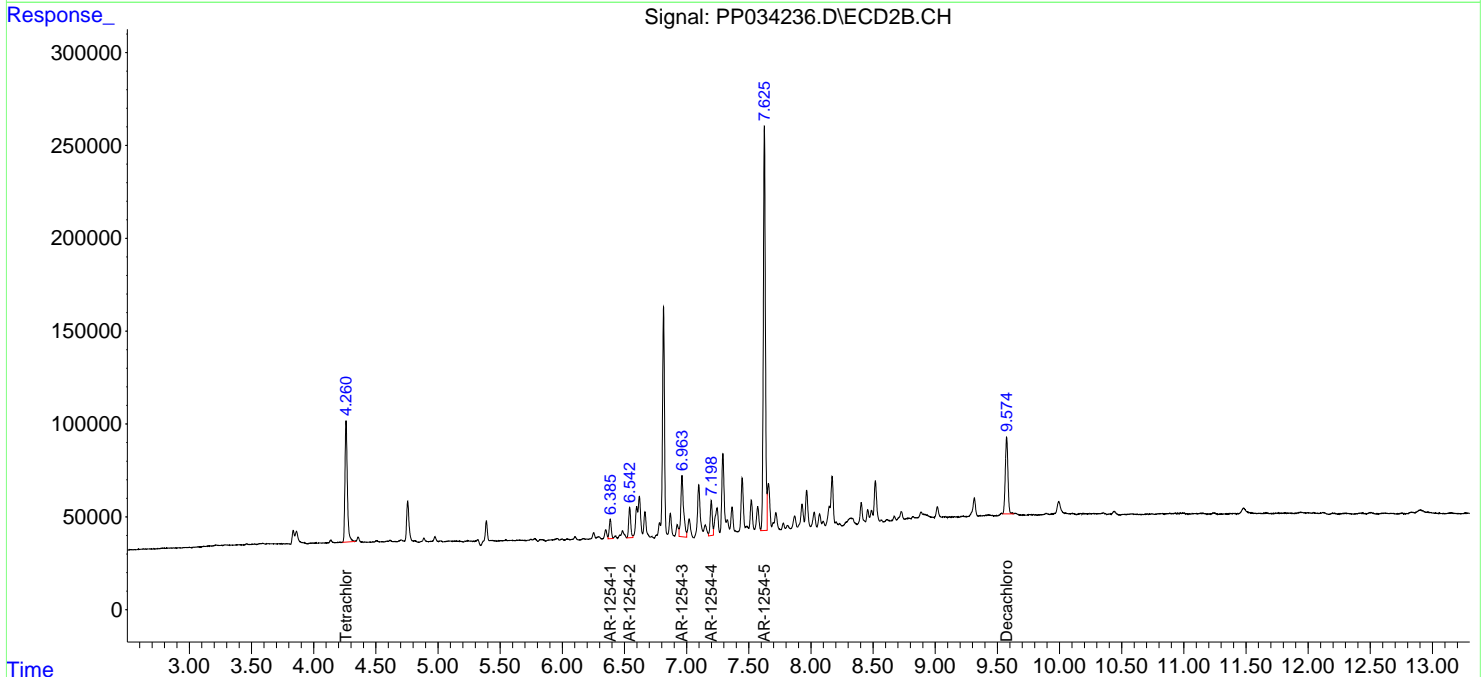
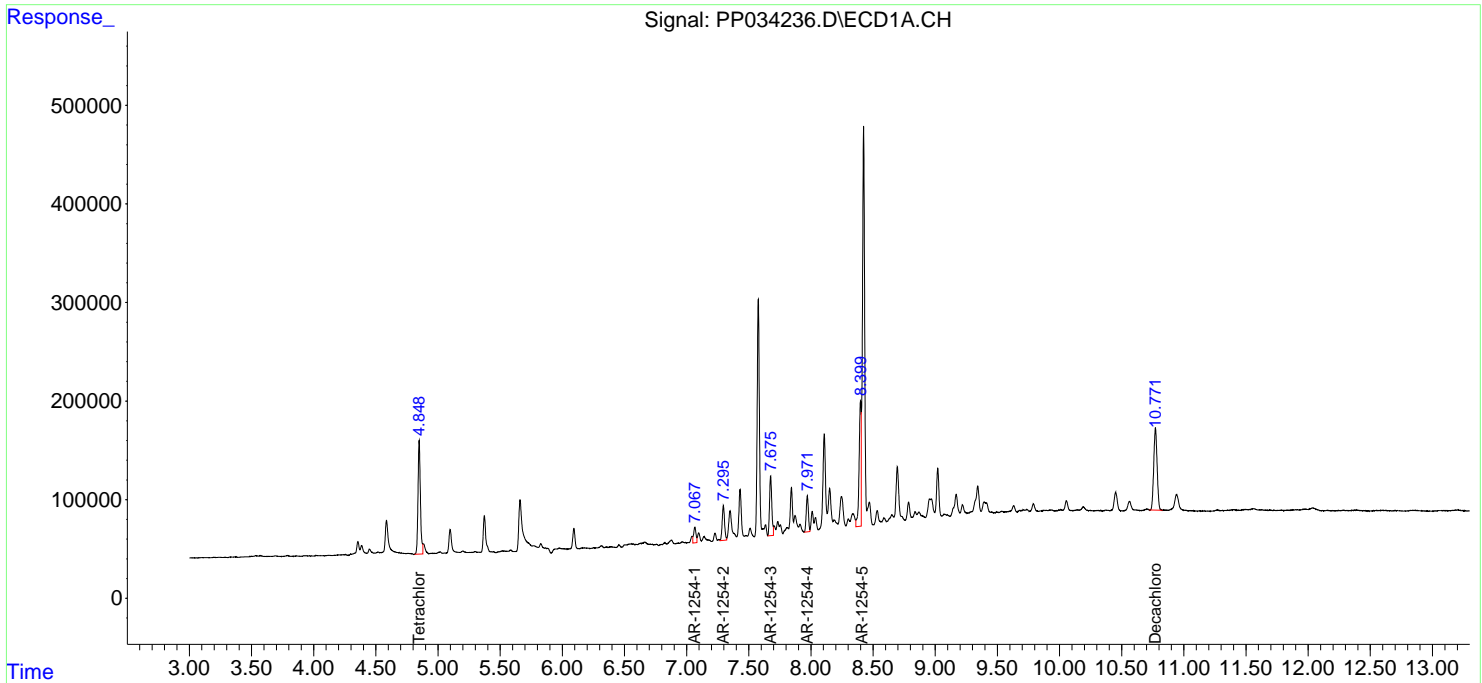
(f)=RT Delta > 1/2 Window (#)=Amounts differ by > 25% (m)=manual int.

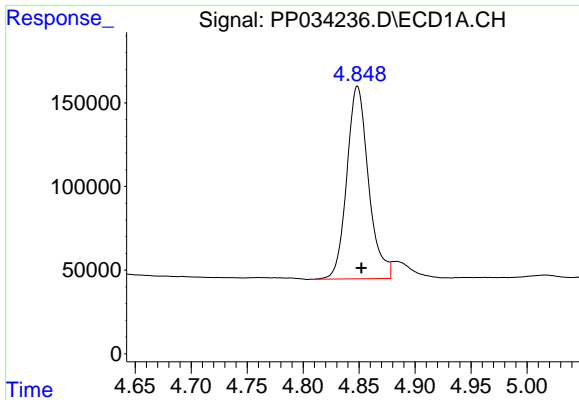
Data Path : Z:\pestpcbsrv\HPCHEM1\ECD_P\Data\PP032221\
 Data File : PP034236.D
 Signal(s) : Signal #1: ECD1A.CH Signal #2: ECD2B.CH
 Acq On : 22 Mar 2021 21:09
 Operator : DD\AJ
 Sample : M1661-03
 Misc :
 ALS Vial : 32 Sample Multiplier: 1

Instrument :
 ECD_P
 ClientSampled :
 X127-7C

Integration File signal 1: autoint1.e
 Integration File signal 2: autoint2.e
 Quant Time: Mar 23 02:08:27 2021
 Quant Method : Z:\pestpcbsrv\HPCHEM1\ECD_P\methods\PP031821.M
 Quant Title : GC EXTRACTABLES
 QLast Update : Sat Mar 20 01:42:16 2021
 Response via : Initial Calibration
 Integrator: ChemStation 6890 Scale Mode: Small noise peaks clipped

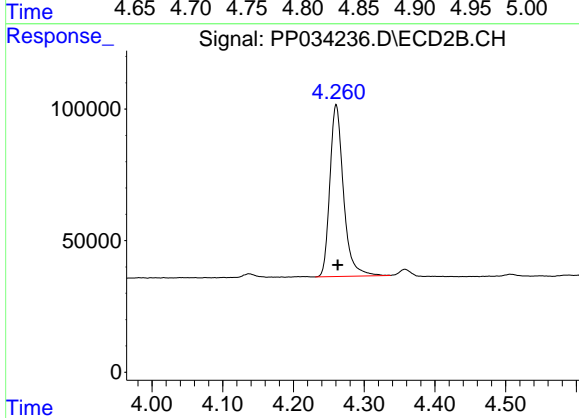
Volume Inj. : 2 µl
 Signal #1 Phase : ZB-MR1 Signal #2 Phase: ZB-MR2
 Signal #1 Info : 30Mx0.32mmx 0.50µ Signal #2 Info : 30M x 0.32mm x 0.25µm



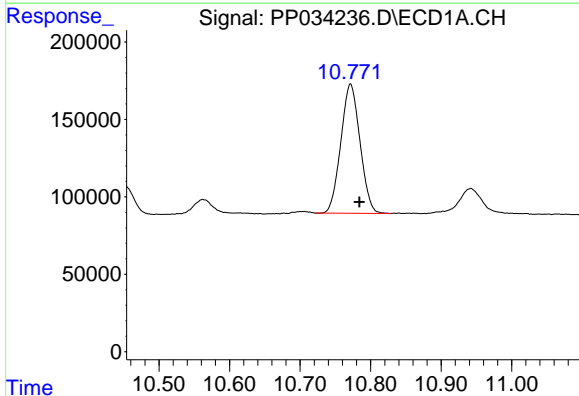


#1 Tetrachloro-m-xylene
 R.T.: 4.849 min
 Delta R.T.: -0.003 min
 Response: 1550579
 Conc: 18.46 ng/ml

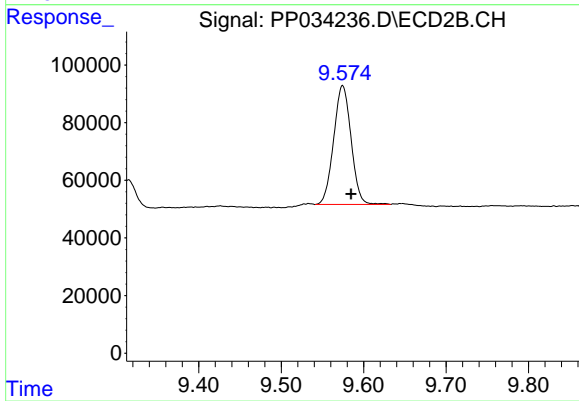
Instrument :
 ECD_P
 ClientSampled :
 X127-7C



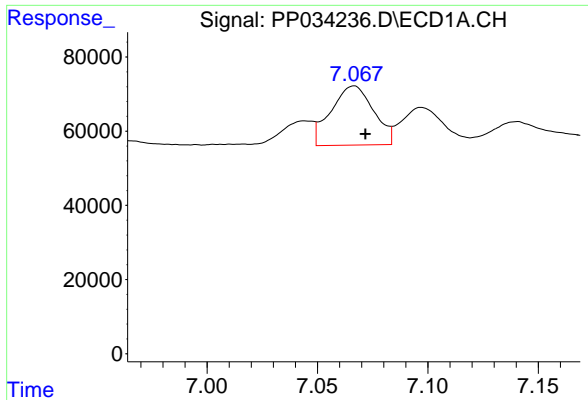
#1 Tetrachloro-m-xylene
 R.T.: 4.260 min
 Delta R.T.: -0.002 min
 Response: 873922
 Conc: 19.75 ng/ml



#2 Decachlorobiphenyl
 R.T.: 10.772 min
 Delta R.T.: -0.013 min
 Response: 1575018
 Conc: 20.07 ng/ml



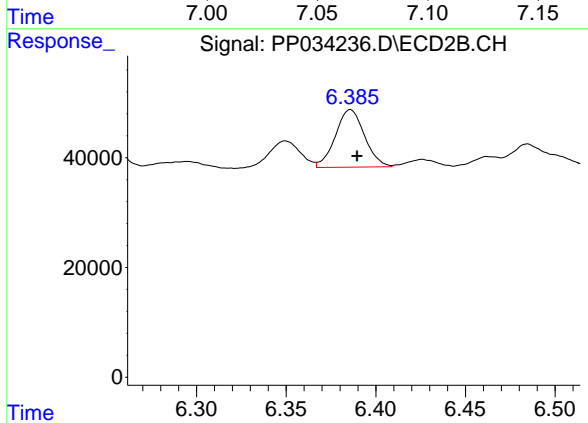
#2 Decachlorobiphenyl
 R.T.: 9.575 min
 Delta R.T.: -0.010 min
 Response: 606723
 Conc: 22.99 ng/ml



#26 AR-1254-1

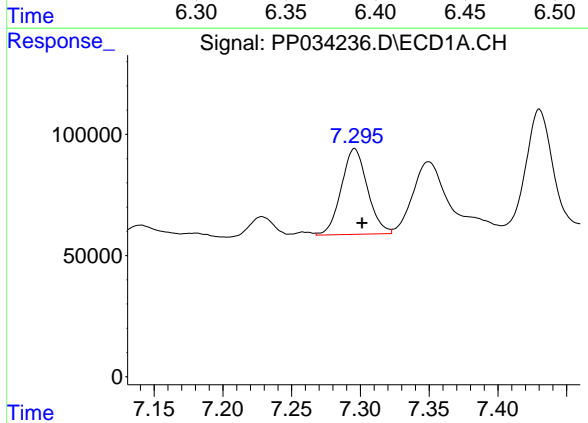
R.T.: 7.067 min
 Delta R.T.: -0.005 min
 Response: 214909
 Conc: 78.52 ng/ml

Instrument :
 ECD_P
 ClientSampled :
 X127-7C



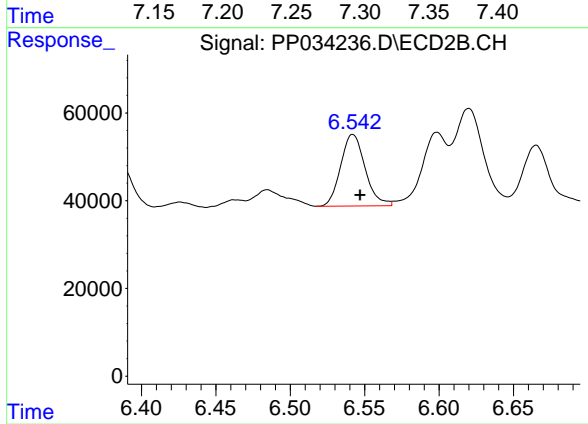
#26 AR-1254-1

R.T.: 6.386 min
 Delta R.T.: -0.004 min
 Response: 118968
 Conc: 70.95 ng/ml



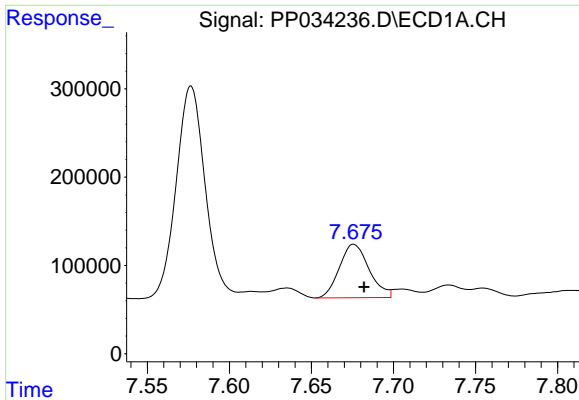
#27 AR-1254-2

R.T.: 7.296 min
 Delta R.T.: -0.006 min
 Response: 467968
 Conc: 112.38 ng/ml



#27 AR-1254-2

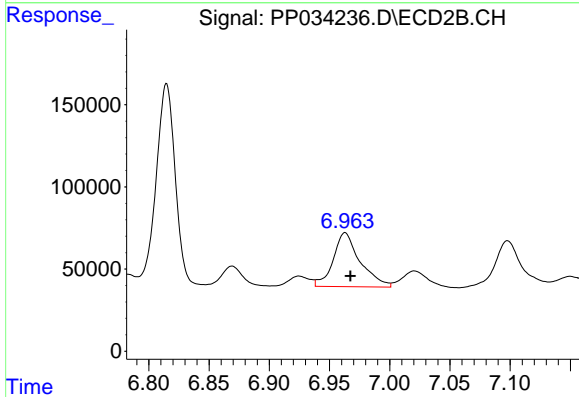
R.T.: 6.542 min
 Delta R.T.: -0.005 min
 Response: 187284
 Conc: 129.15 ng/ml



#28 AR-1254-3

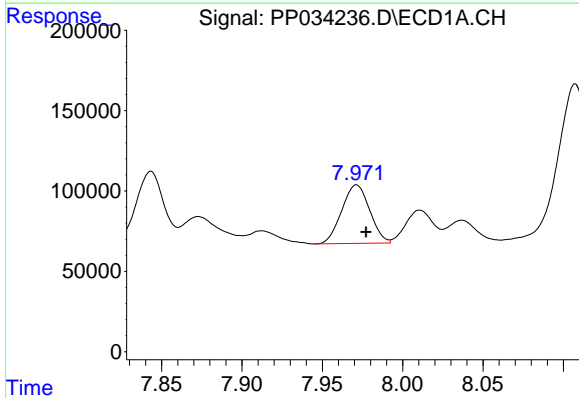
R.T.: 7.676 min
 Delta R.T.: -0.006 min
 Response: 762658
 Conc: 175.60 ng/ml

Instrument :
 ECD_P
 ClientSampled :
 X127-7C



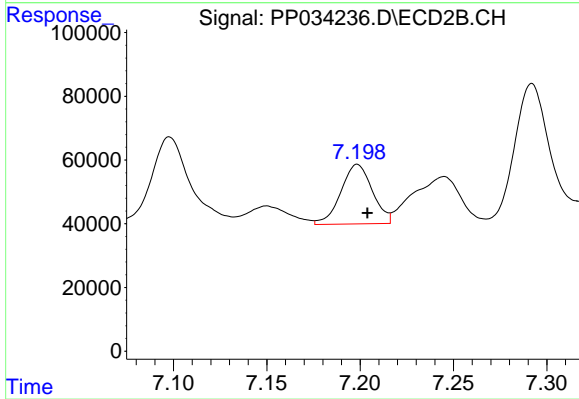
#28 AR-1254-3

R.T.: 6.963 min
 Delta R.T.: -0.005 min
 Response: 510476
 Conc: 222.90 ng/ml



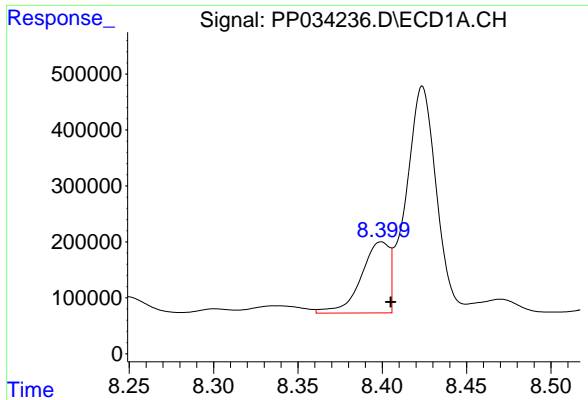
#29 AR-1254-4

R.T.: 7.971 min
 Delta R.T.: -0.006 min
 Response: 440249
 Conc: 151.65 ng/ml



#29 AR-1254-4

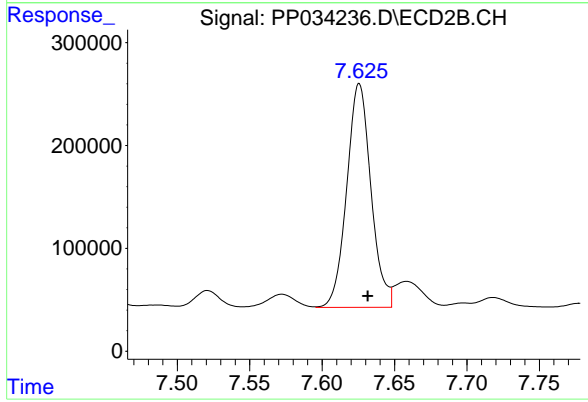
R.T.: 7.199 min
 Delta R.T.: -0.005 min
 Response: 219865
 Conc: 183.87 ng/ml



#30 AR-1254-5

R.T.: 8.399 min
Delta R.T.: -0.006 min
Response: 1482778
Conc: 444.18 ng/ml

Instrument :
ECD_P
ClientSampleId :
X127-7C



#30 AR-1254-5

R.T.: 7.626 min
Delta R.T.: -0.006 min
Response: 2532942
Conc: 1371.79 ng/ml