

Data Path : Z:\pestpcbsrv\HPCHEM1\ECD\_P\Data\PP032221\  
 Data File : PP034250.D  
 Signal(s) : Signal #1: ECD1A.CH Signal #2: ECD2B.CH  
 Acq On : 23 Mar 2021 2:47  
 Operator : DD\AJ  
 Sample : I.BLK  
 Misc :  
 ALS Vial : 2 Sample Multiplier: 1

Instrument :  
 ECD\_P  
 ClientSampleId :  
 I.BLK

Integration File signal 1: autoint1.e  
 Integration File signal 2: autoint2.e  
 Quant Time: Mar 23 04:45:45 2021  
 Quant Method : Z:\pestpcbsrv\HPCHEM1\ECD\_P\methods\PP031821.M  
 Quant Title : GC EXTRACTABLES  
 QLast Update : Sat Mar 20 01:42:16 2021  
 Response via : Initial Calibration  
 Integrator: ChemStation 6890 Scale Mode: Small noise peaks clipped

Volume Inj. : 2 µl  
 Signal #1 Phase : ZB-MR1 Signal #2 Phase: ZB-MR2  
 Signal #1 Info : 30Mx0.32mmx 0.50µ Signal #2 Info : 30M x 0.32mm x 0.25µm

Compound	RT#1	RT#2	Resp#1	Resp#2	ng/ml	ng/ml
-----						
System Monitoring Compounds						
1) SA Tetrachlo...	4.849	4.261	1835108	1034863	21.845	23.385
2) SA Decachlor...	10.771	9.575	1905381	694203	24.280	26.307

Target Compounds

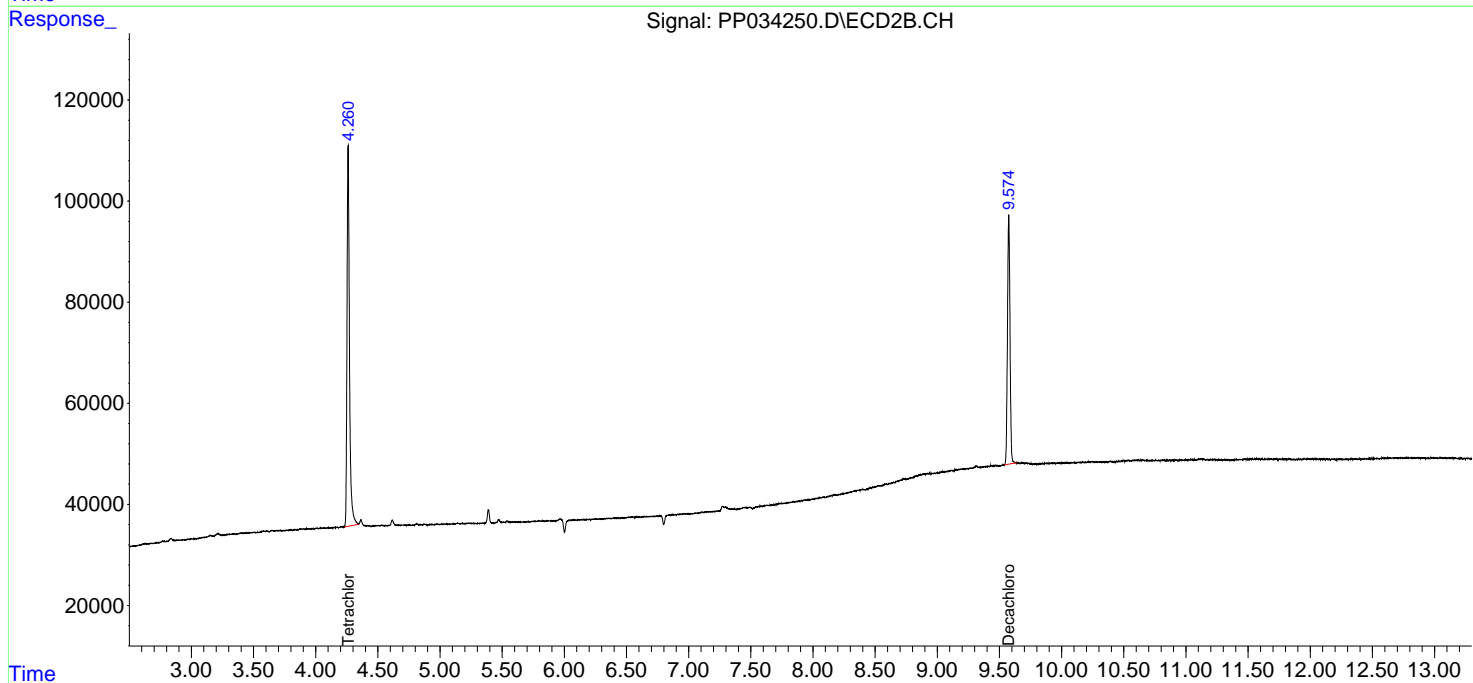
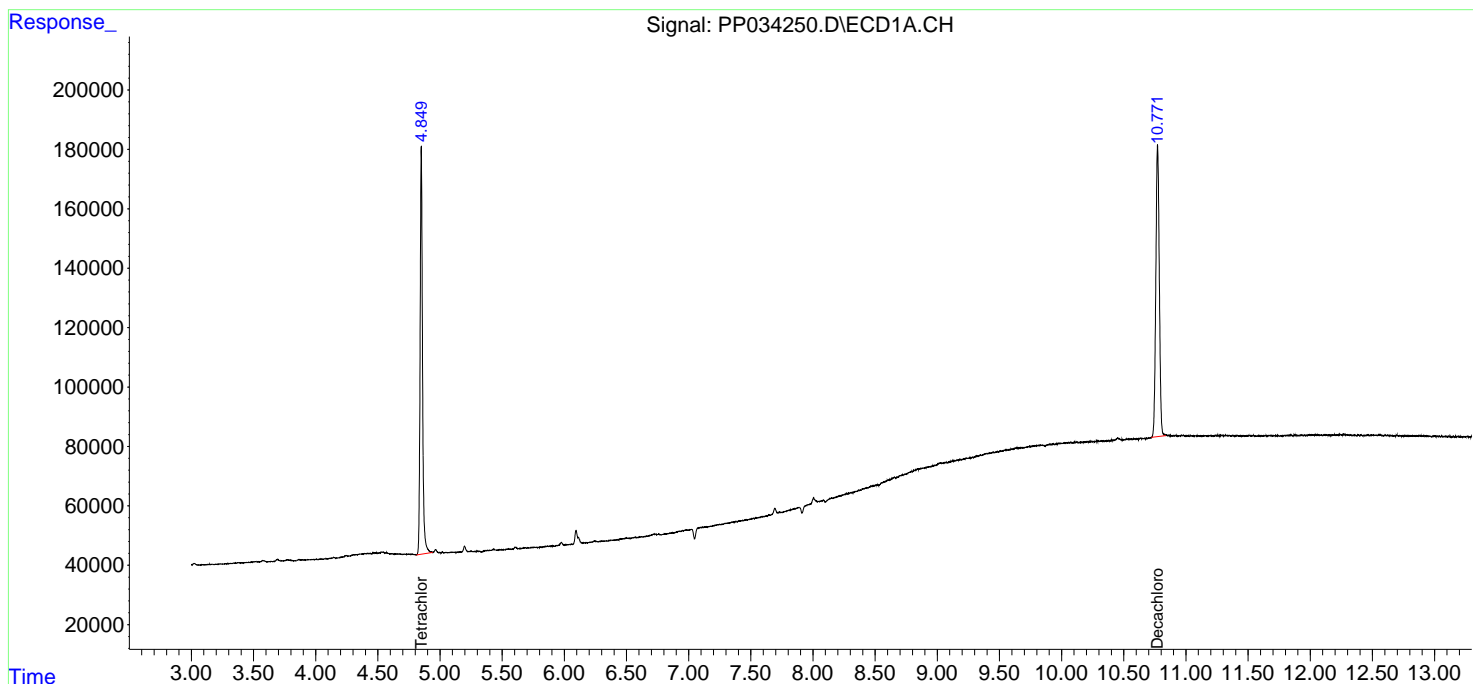
(f)=RT Delta > 1/2 Window (#)=Amounts differ by > 25% (m)=manual int.

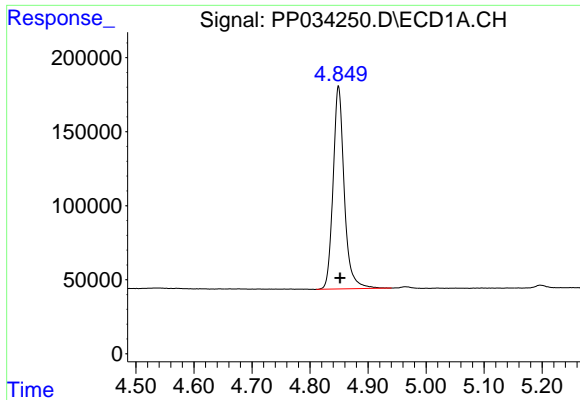
Data Path : Z:\pestpcbsrv\HPCHEM1\ECD\_P\Data\PP032221\  
 Data File : PP034250.D  
 Signal(s) : Signal #1: ECD1A.CH Signal #2: ECD2B.CH  
 Acq On : 23 Mar 2021 2:47  
 Operator : DD\AJ  
 Sample : I.BLK  
 Misc :  
 ALS Vial : 2 Sample Multiplier: 1

Instrument :  
 ECD\_P  
 ClientSampleId :  
 I.BLK

Integration File signal 1: autoint1.e  
 Integration File signal 2: autoint2.e  
 Quant Time: Mar 23 04:45:45 2021  
 Quant Method : Z:\pestpcbsrv\HPCHEM1\ECD\_P\methods\PP031821.M  
 Quant Title : GC EXTRACTABLES  
 QLast Update : Sat Mar 20 01:42:16 2021  
 Response via : Initial Calibration  
 Integrator: ChemStation 6890 Scale Mode: Small noise peaks clipped

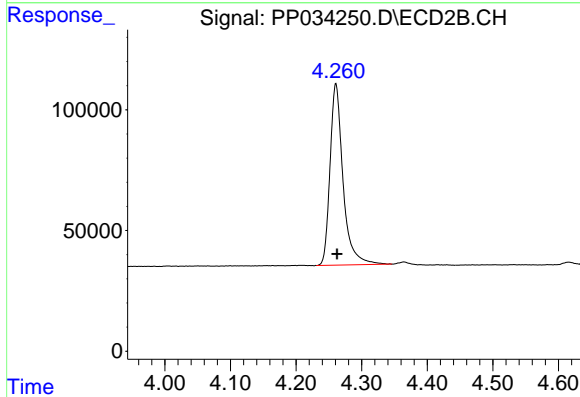
Volume Inj. : 2 µl  
 Signal #1 Phase : ZB-MR1 Signal #2 Phase: ZB-MR2  
 Signal #1 Info : 30Mx0.32mmx 0.50µ Signal #2 Info : 30M x 0.32mm x 0.25µm



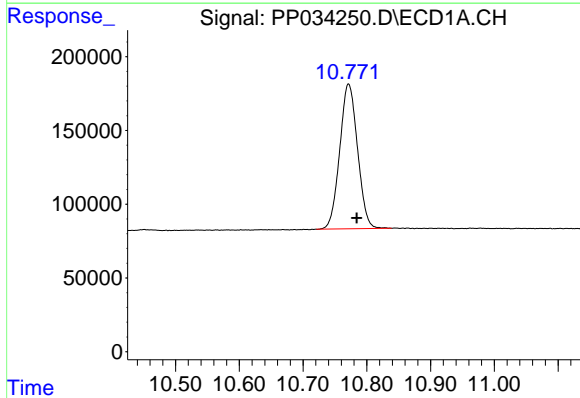


#1 Tetrachloro-m-xylene  
 R.T.: 4.849 min  
 Delta R.T.: -0.003 min  
 Response: 1835108  
 Conc: 21.84 ng/ml

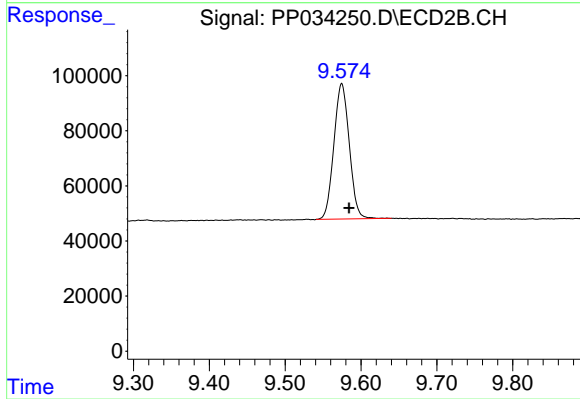
Instrument :  
 ECD\_P  
 ClientSampled :  
 I.BLK



#1 Tetrachloro-m-xylene  
 R.T.: 4.261 min  
 Delta R.T.: -0.002 min  
 Response: 1034863  
 Conc: 23.39 ng/ml



#2 Decachlorobiphenyl  
 R.T.: 10.771 min  
 Delta R.T.: -0.013 min  
 Response: 1905381  
 Conc: 24.28 ng/ml



#2 Decachlorobiphenyl  
 R.T.: 9.575 min  
 Delta R.T.: -0.010 min  
 Response: 694203  
 Conc: 26.31 ng/ml