

Data Path : Z:\pestpcbsrv\HPCHEM1\ECD_P\Data\PP032221\
 Data File : PP034254.D
 Signal(s) : Signal #1: ECD1A.CH Signal #2: ECD2B.CH
 Acq On : 23 Mar 2021 3:54
 Operator : DD\AJ
 Sample : M1753-01
 Misc :
 ALS Vial : 44 Sample Multiplier: 1

Instrument :
 ECD_P
ClientSampled :
 33027

Manual Integrations
APPROVED
 Ankita
 3/23/2021 1:39:07 PM

Integration File signal 1: autoint1.e
 Integration File signal 2: autoint2.e
 Quant Time: Mar 23 04:48:22 2021
 Quant Method : Z:\pestpcbsrv\HPCHEM1\ECD_P\methods\PP031821.M
 Quant Title : GC EXTRACTABLES
 QLast Update : Sat Mar 20 01:42:16 2021
 Response via : Initial Calibration
 Integrator: ChemStation 6890 Scale Mode: Small noise peaks clipped

Volume Inj. : 2 µl
 Signal #1 Phase : ZB-MR1 Signal #2 Phase: ZB-MR2
 Signal #1 Info : 30Mx0.32mmx 0.50µ Signal #2 Info : 30M x 0.32mm x 0.25µm

Compound	RT#1	RT#2	Resp#1	Resp#2	ng/ml	ng/ml

System Monitoring Compounds						
1) SA Tetrachlo...	4.850	4.264	1161714	699836	13.829m	15.815
2) SA Decachlor...	10.769	9.574	672924	205815	8.575m	7.799m

Target Compounds

(f)=RT Delta > 1/2 Window (#)=Amounts differ by > 25% (m)=manual int.

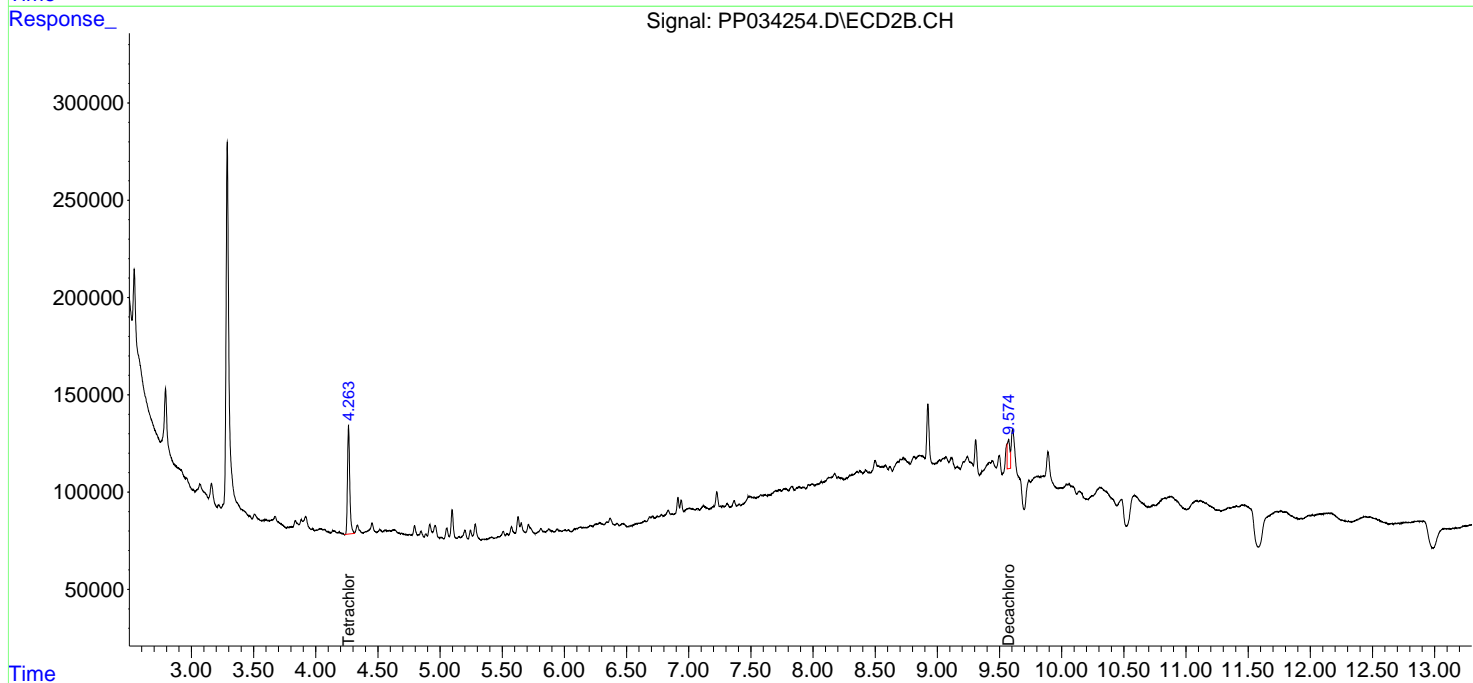
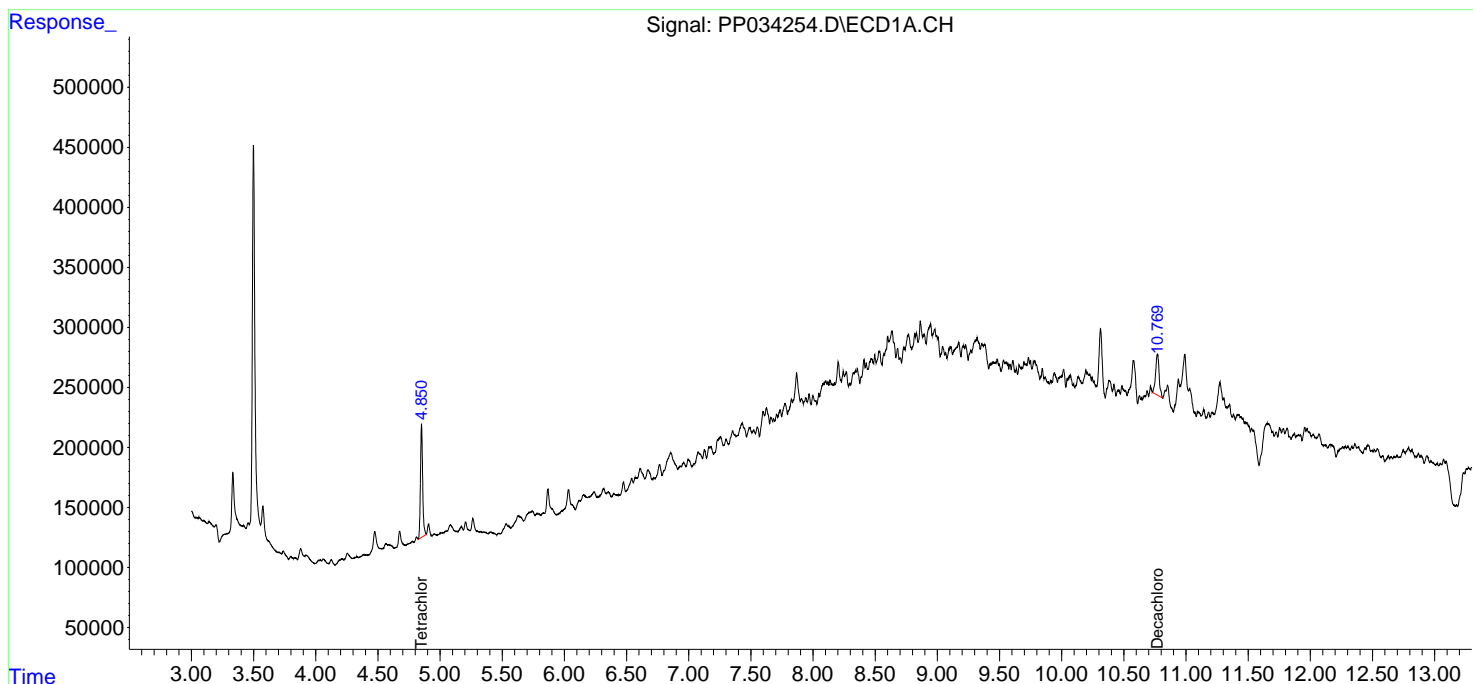
Data Path : Z:\pestpcbsrv\HPCHEM1\ECD_P\Data\PP032221\
 Data File : PP034254.D
 Signal(s) : Signal #1: ECD1A.CH Signal #2: ECD2B.CH
 Acq On : 23 Mar 2021 3:54
 Operator : DD\AJ
 Sample : M1753-01
 Misc :
 ALS Vial : 44 Sample Multiplier: 1

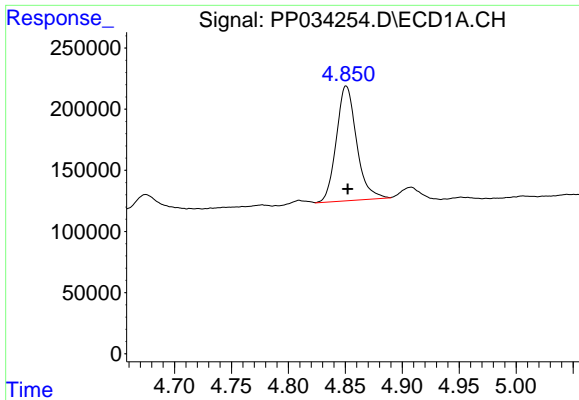
Instrument :
 ECD_P
ClientSampled :
 33027

Manual Integrations
APPROVED
 Ankita
 3/23/2021 1:39:07 PM

Integration File signal 1: autoint1.e
 Integration File signal 2: autoint2.e
 Quant Time: Mar 23 04:48:22 2021
 Quant Method : Z:\pestpcbsrv\HPCHEM1\ECD_P\methods\PP031821.M
 Quant Title : GC EXTRACTABLES
 QLast Update : Sat Mar 20 01:42:16 2021
 Response via : Initial Calibration
 Integrator: ChemStation 6890 Scale Mode: Small noise peaks clipped

Volume Inj. : 2 µl
 Signal #1 Phase : ZB-MR1 Signal #2 Phase: ZB-MR2
 Signal #1 Info : 30Mx0.32mmx 0.50µ Signal #2 Info : 30M x 0.32mm x 0.25µm

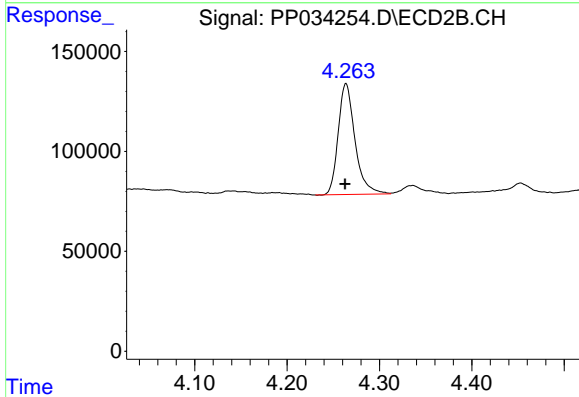




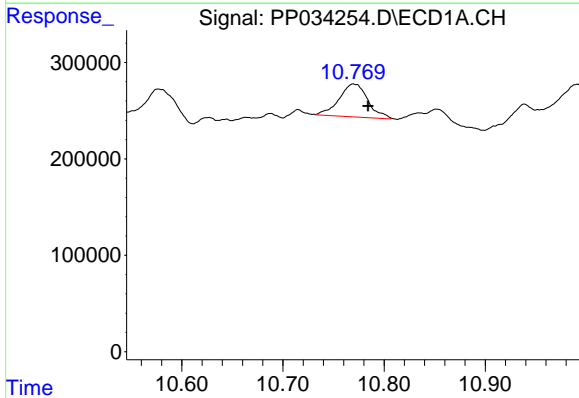
#1 Tetrachloro-m-xylene
 R.T.: 4.850 min
 Delta R.T.: -0.002 min
 Response: 1161714
 Conc: 13.83 ng/ml m

Instrument :
 ECD_P
 ClientSampled :
 33027

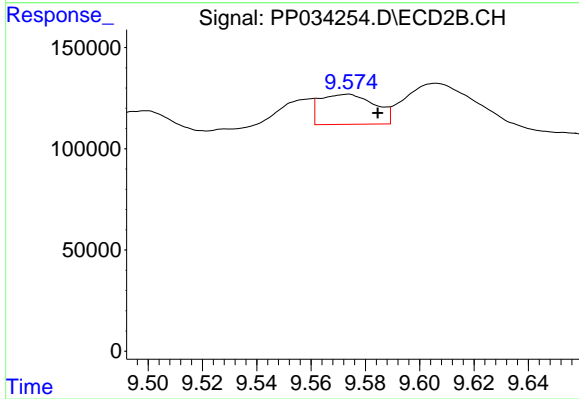
Manual Integrations
 APPROVED
 Ankita
 3/23/2021 1:39:07 PM



#1 Tetrachloro-m-xylene
 R.T.: 4.264 min
 Delta R.T.: 0.001 min
 Response: 699836
 Conc: 15.81 ng/ml



#2 Decachlorobiphenyl
 R.T.: 10.769 min
 Delta R.T.: -0.015 min
 Response: 672924
 Conc: 8.57 ng/ml m



#2 Decachlorobiphenyl
 R.T.: 9.574 min
 Delta R.T.: -0.011 min
 Response: 205815
 Conc: 7.80 ng/ml m