

Data Path : Z:\pestpcbsrv\HPCHEM1\ECD_P\Data\PP032221\
 Data File : PP034256.D
 Signal(s) : Signal #1: ECD1A.CH Signal #2: ECD2B.CH
 Acq On : 23 Mar 2021 4:28
 Operator : DD\AJ
 Sample : M1750-01
 Misc :
 ALS Vial : 46 Sample Multiplier: 1

Instrument :
 ECD_P
 ClientSampleId :
 TRE-1019

Integration File signal 1: autoint1.e
 Integration File signal 2: autoint2.e
 Quant Time: Mar 23 05:59:05 2021
 Quant Method : Z:\pestpcbsrv\HPCHEM1\ECD_P\methods\PP031821.M
 Quant Title : GC EXTRACTABLES
 QLast Update : Sat Mar 20 01:42:16 2021
 Response via : Initial Calibration
 Integrator: ChemStation 6890 Scale Mode: Small noise peaks clipped

Volume Inj. : 2 µl
 Signal #1 Phase : ZB-MR1 Signal #2 Phase: ZB-MR2
 Signal #1 Info : 30Mx0.32mmx 0.50µ Signal #2 Info : 30M x 0.32mm x 0.25µm

Compound	RT#1	RT#2	Resp#1	Resp#2	ng/ml	ng/ml

System Monitoring Compounds						
1) SA Tetrachlo...	4.850	4.261	1818867	1099942	21.651	24.856
2) SA Decachlor...	10.774	9.574	2192942	699623	27.944	26.512

Target Compounds

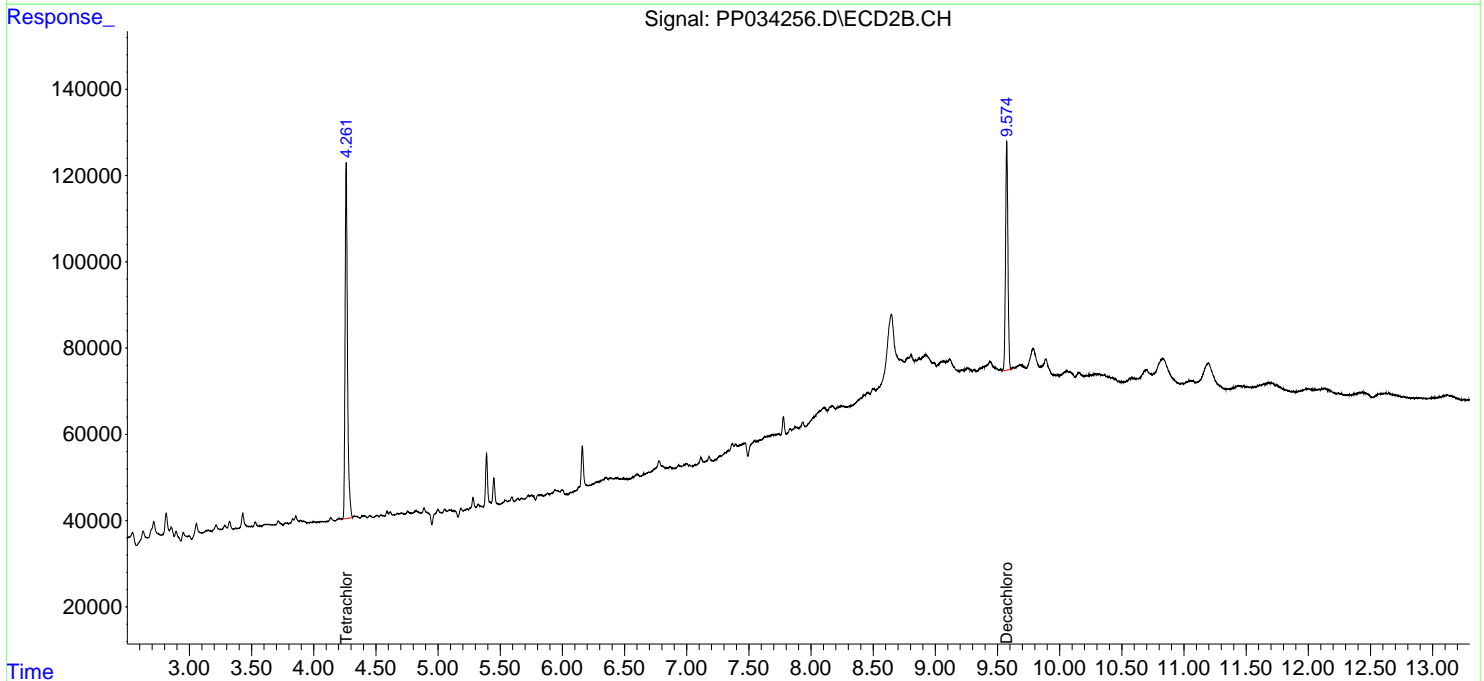
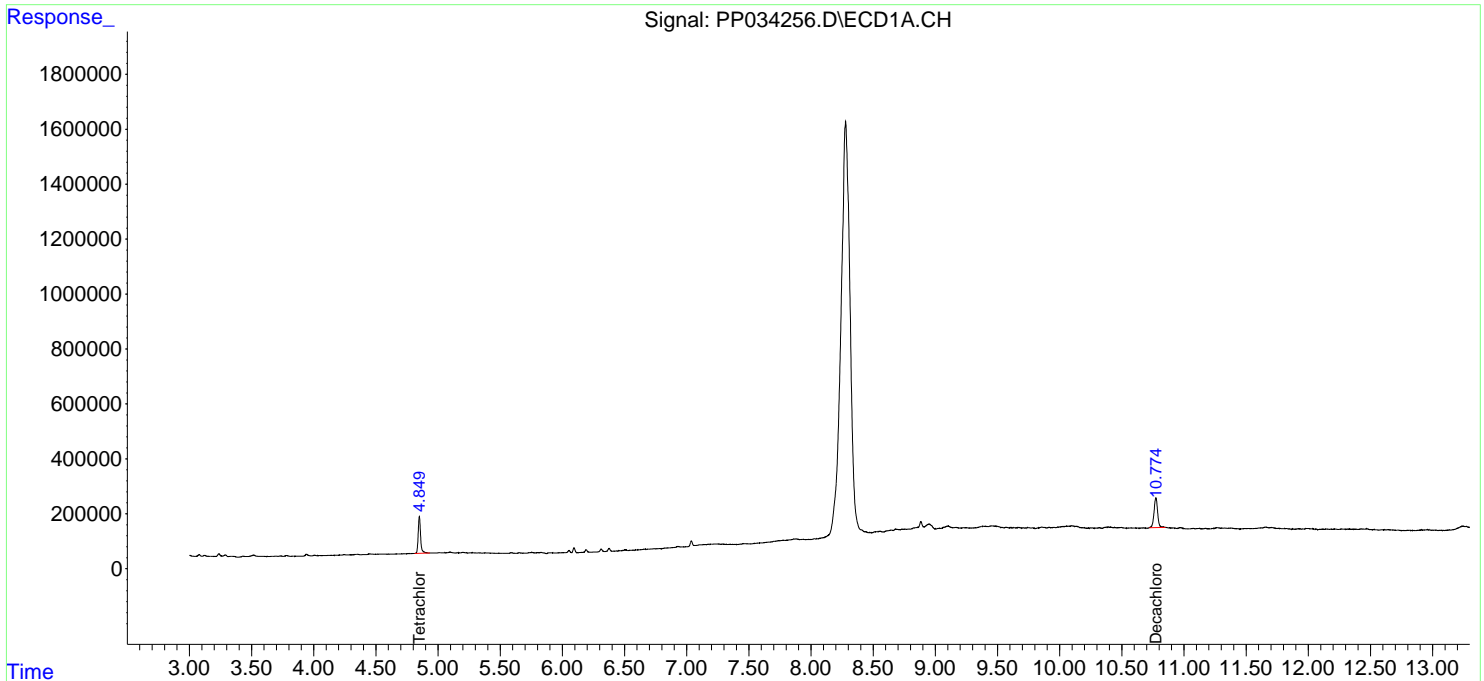
(f)=RT Delta > 1/2 Window (#)=Amounts differ by > 25% (m)=manual int.

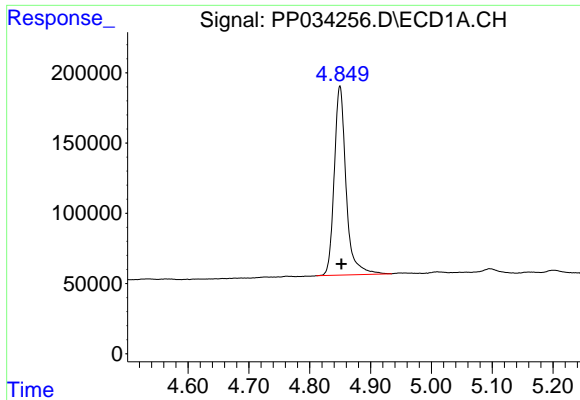
Data Path : Z:\pestpcbsrv\HPCHEM1\ECD_P\Data\PP032221\
 Data File : PP034256.D
 Signal(s) : Signal #1: ECD1A.CH Signal #2: ECD2B.CH
 Acq On : 23 Mar 2021 4:28
 Operator : DD\AJ
 Sample : M1750-01
 Misc :
 ALS Vial : 46 Sample Multiplier: 1

Instrument :
 ECD_P
 ClientSampleId :
 TRE-1019

Integration File signal 1: autoint1.e
 Integration File signal 2: autoint2.e
 Quant Time: Mar 23 05:59:05 2021
 Quant Method : Z:\pestpcbsrv\HPCHEM1\ECD_P\methods\PP031821.M
 Quant Title : GC EXTRACTABLES
 QLast Update : Sat Mar 20 01:42:16 2021
 Response via : Initial Calibration
 Integrator: ChemStation 6890 Scale Mode: Small noise peaks clipped

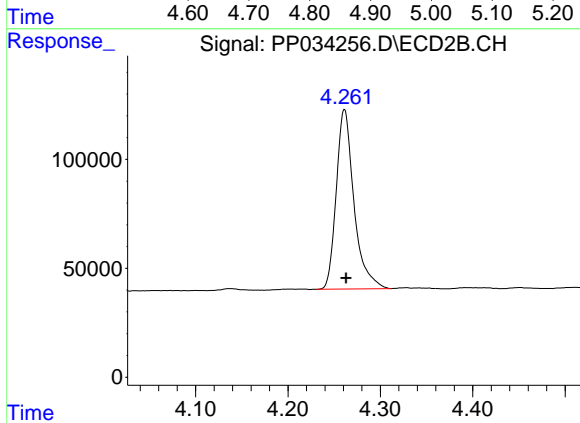
Volume Inj. : 2 µl
 Signal #1 Phase : ZB-MR1 Signal #2 Phase: ZB-MR2
 Signal #1 Info : 30Mx0.32mmx 0.50µ Signal #2 Info : 30M x 0.32mm x 0.25µm



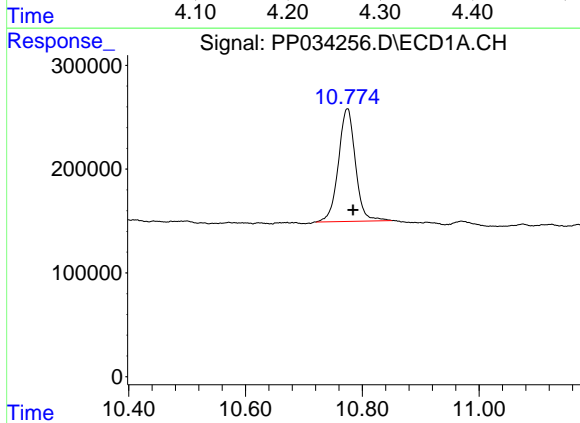


#1 Tetrachloro-m-xylene
 R.T.: 4.850 min
 Delta R.T.: -0.002 min
 Response: 1818867
 Conc: 21.65 ng/ml

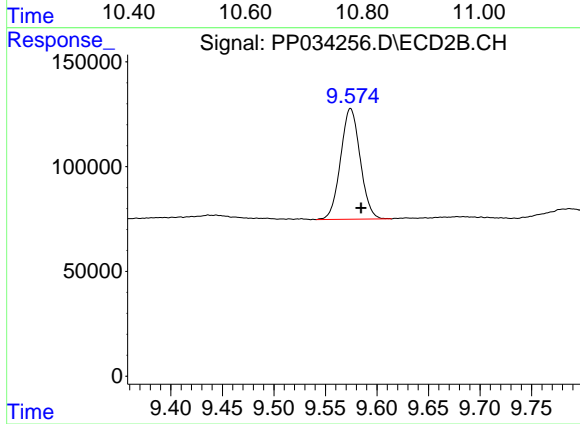
Instrument :
 ECD_P
 ClientSampled :
 TRE-1019



#1 Tetrachloro-m-xylene
 R.T.: 4.261 min
 Delta R.T.: -0.002 min
 Response: 1099942
 Conc: 24.86 ng/ml



#2 Decachlorobiphenyl
 R.T.: 10.774 min
 Delta R.T.: -0.010 min
 Response: 2192942
 Conc: 27.94 ng/ml



#2 Decachlorobiphenyl
 R.T.: 9.574 min
 Delta R.T.: -0.010 min
 Response: 699623
 Conc: 26.51 ng/ml