

Data Path : Z:\pestpcbsrv\HPCHEM1\ECD_P\Data\PP032221\
 Data File : PP034258.D
 Signal(s) : Signal #1: ECD1A.CH Signal #2: ECD2B.CH
 Acq On : 23 Mar 2021 5:36
 Operator : DD\AJ
 Sample : AR1248CCC500
 Misc :
 ALS Vial : 4 Sample Multiplier: 1

Instrument :
 ECD_P
 ClientSampleId :
 AR1248CCC500

Integration File signal 1: autoint1.e
 Integration File signal 2: autoint2.e
 Quant Time: Mar 23 06:00:17 2021
 Quant Method : Z:\pestpcbsrv\HPCHEM1\ECD_P\methods\PP031821.M
 Quant Title : GC EXTRACTABLES
 QLast Update : Sat Mar 20 01:42:16 2021
 Response via : Initial Calibration
 Integrator: ChemStation 6890 Scale Mode: Small noise peaks clipped

Volume Inj. : 2 µl
 Signal #1 Phase : ZB-MR2 Signal #2 Phase: ZB-MR2
 Signal #1 Info : 30Mx0.32mmx 0.50µ Signal #2 Info : 30M x 0.32mm x 0.25µm

Compound	RT#1	RT#2	Resp#1	Resp#2	ng/ml	ng/ml

System Monitoring Compounds						
1) SA Tetrachlo...	4.849	4.261	3861098	2192076	45.962	49.536
2) SA Decachlor...	10.771	9.575	3803816	1385645	48.471	52.508
Target Compounds						
21) L5 AR-1248-1	6.161	5.516	666875	366873	446.031	533.329
22) L5 AR-1248-2	6.455	5.778	916982	499803	436.983	500.508
23) L5 AR-1248-3	6.670	5.823	1120235	534314	439.883	506.666
24) L5 AR-1248-4	7.097	6.008	1241013	607495	480.322	495.033
25) L5 AR-1248-5	7.136	6.428	1228420	564998	473.366	559.597

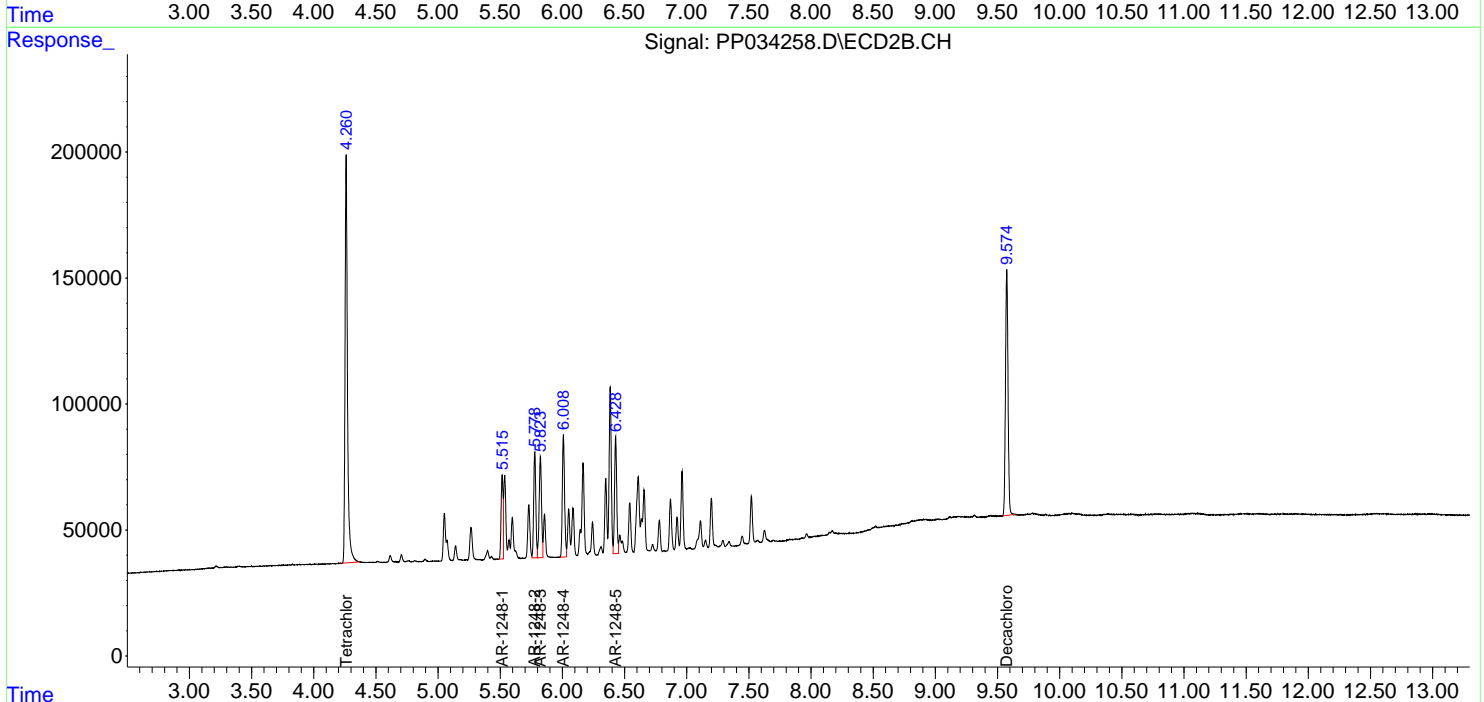
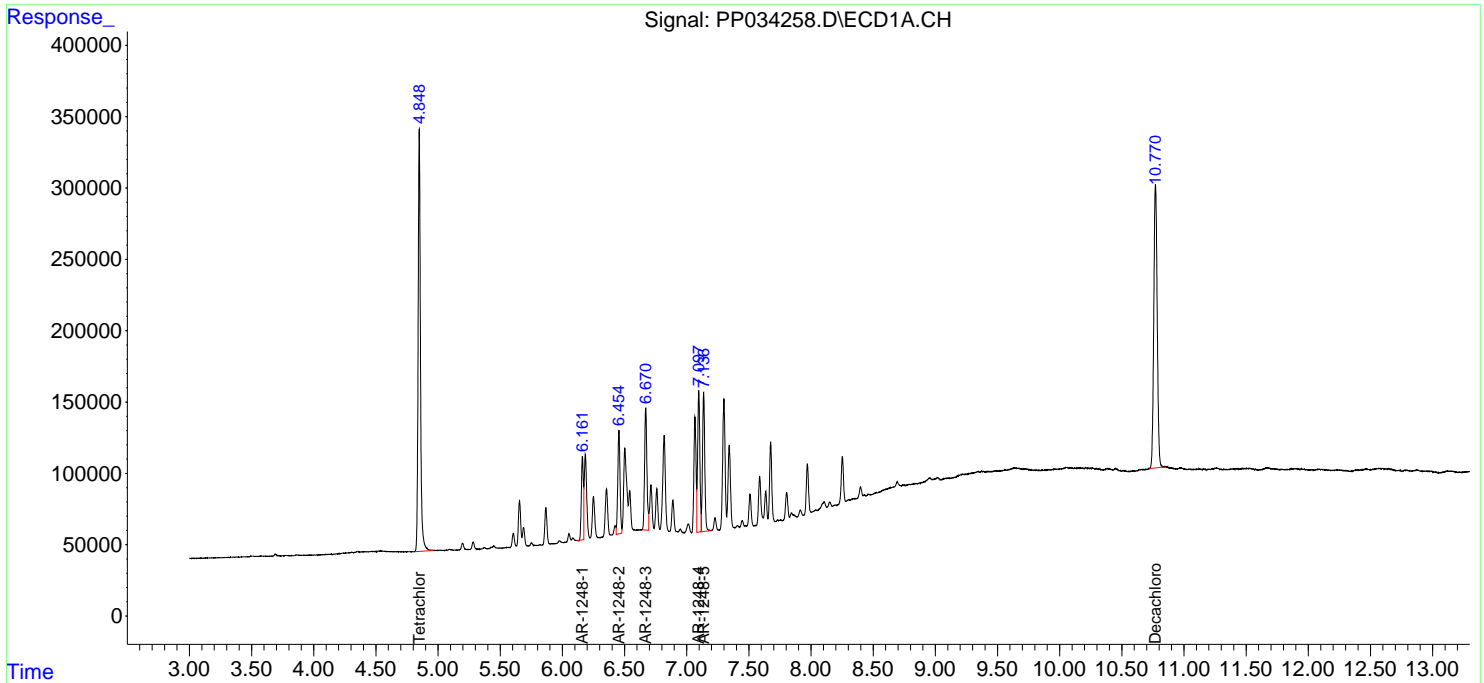
(f)=RT Delta > 1/2 Window (#)=Amounts differ by > 25% (m)=manual int.

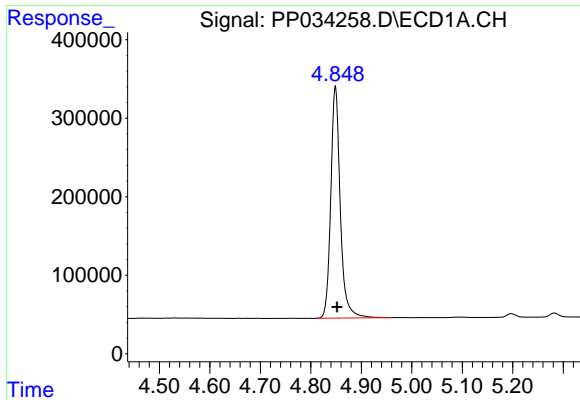
Data Path : Z:\pestpcbsrv\HPCHEM1\ECD_P\Data\PP032221\
 Data File : PP034258.D
 Signal(s) : Signal #1: ECD1A.CH Signal #2: ECD2B.CH
 Acq On : 23 Mar 2021 5:36
 Operator : DD\AJ
 Sample : AR1248CCC500
 Misc :
 ALS Vial : 4 Sample Multiplier: 1

Instrument :
 ECD_P
 ClientSampleId :
 AR1248CCC500

Integration File signal 1: autoint1.e
 Integration File signal 2: autoint2.e
 Quant Time: Mar 23 06:00:17 2021
 Quant Method : Z:\pestpcbsrv\HPCHEM1\ECD_P\methods\PP031821.M
 Quant Title : GC EXTRACTABLES
 QLast Update : Sat Mar 20 01:42:16 2021
 Response via : Initial Calibration
 Integrator: ChemStation 6890 Scale Mode: Small noise peaks clipped

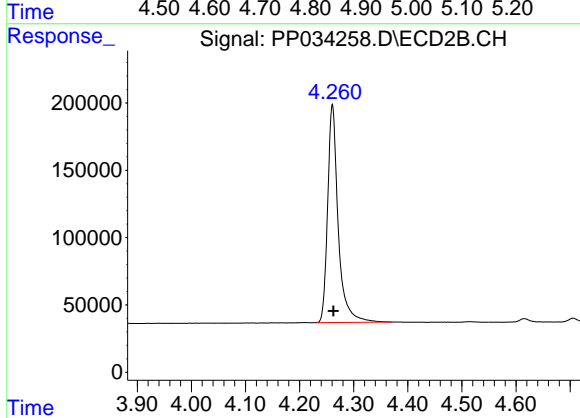
Volume Inj. : 2 µl
 Signal #1 Phase : ZB-MR1 Signal #2 Phase: ZB-MR2
 Signal #1 Info : 30Mx0.32mmx 0.50µ Signal #2 Info : 30M x 0.32mm x 0.25µm



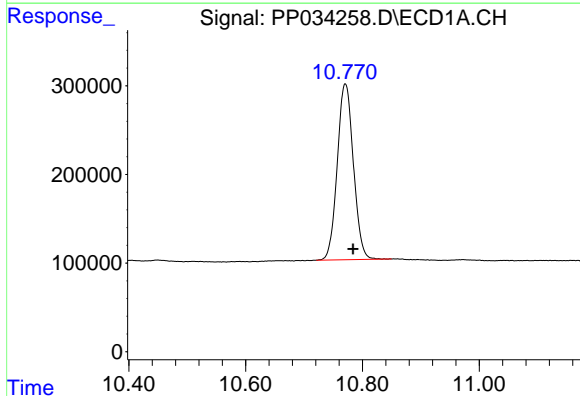


#1 Tetrachloro-m-xylene
 R.T.: 4.849 min
 Delta R.T.: -0.003 min
 Response: 3861098
 Conc: 45.96 ng/ml

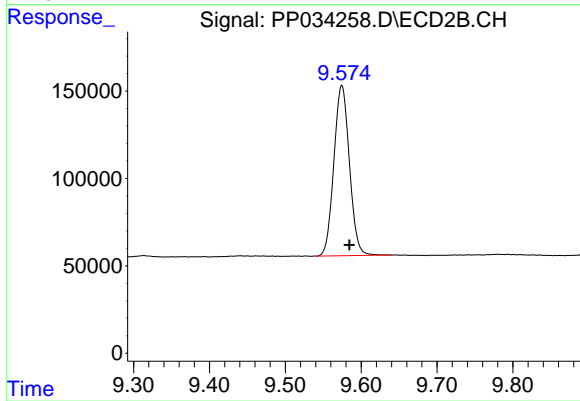
Instrument :
 ECD_P
 ClientSampleId :
 AR1248CCC500



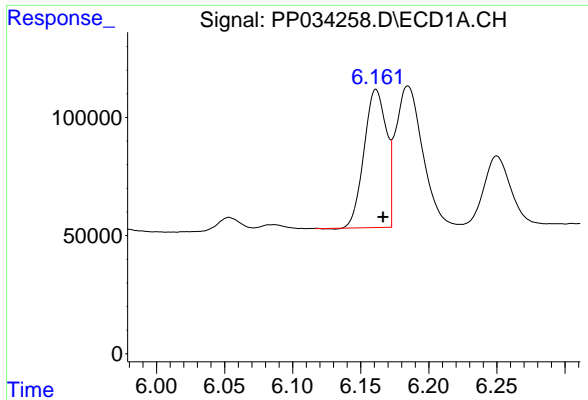
#1 Tetrachloro-m-xylene
 R.T.: 4.261 min
 Delta R.T.: -0.002 min
 Response: 2192076
 Conc: 49.54 ng/ml



#2 Decachlorobiphenyl
 R.T.: 10.771 min
 Delta R.T.: -0.013 min
 Response: 3803816
 Conc: 48.47 ng/ml



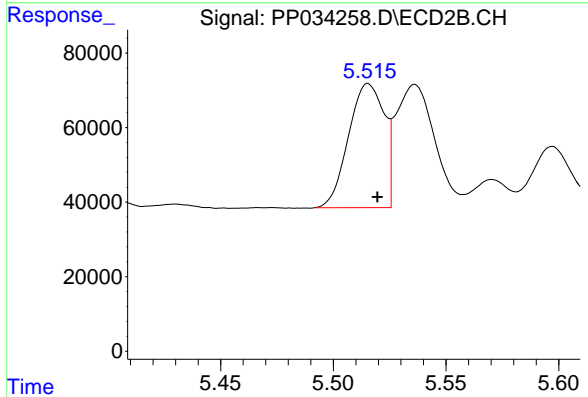
#2 Decachlorobiphenyl
 R.T.: 9.575 min
 Delta R.T.: -0.010 min
 Response: 1385645
 Conc: 52.51 ng/ml



#21 AR-1248-1

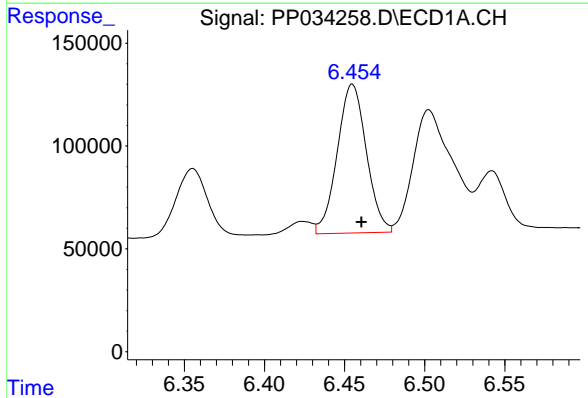
R.T.: 6.161 min
 Delta R.T.: -0.005 min
 Response: 666875
 Conc: 446.03 ng/ml

Instrument :
 ECD_P
 ClientSampleId :
 AR1248CCC500



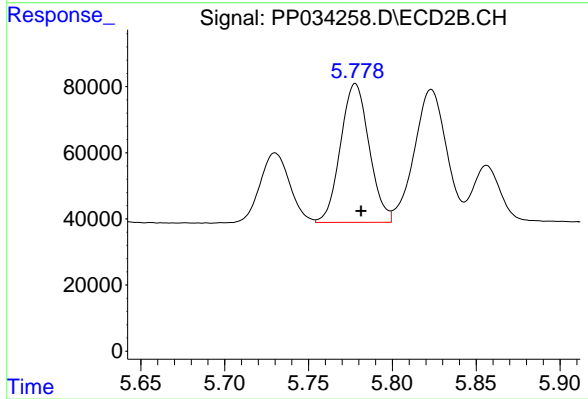
#21 AR-1248-1

R.T.: 5.516 min
 Delta R.T.: -0.004 min
 Response: 366873
 Conc: 533.33 ng/ml



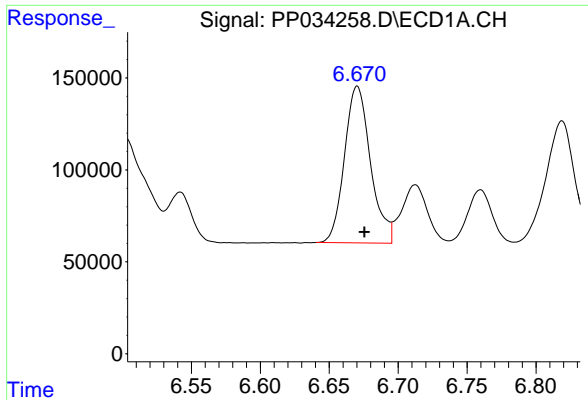
#22 AR-1248-2

R.T.: 6.455 min
 Delta R.T.: -0.006 min
 Response: 916982
 Conc: 436.98 ng/ml



#22 AR-1248-2

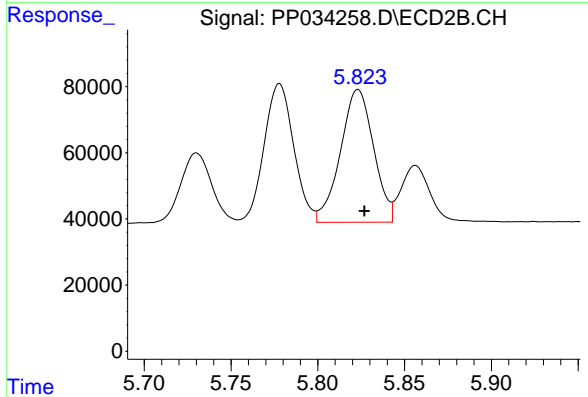
R.T.: 5.778 min
 Delta R.T.: -0.004 min
 Response: 499803
 Conc: 500.51 ng/ml



#23 AR-1248-3

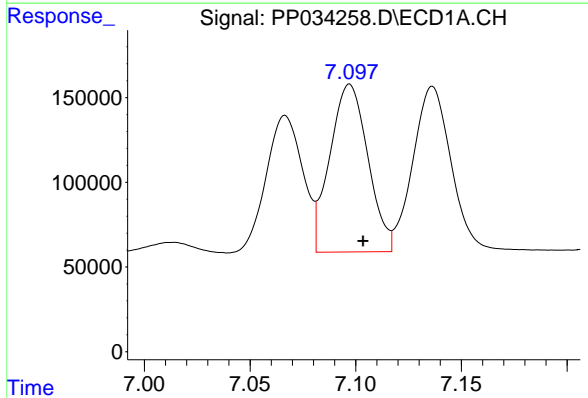
R.T.: 6.670 min
 Delta R.T.: -0.005 min
 Response: 1120235
 Conc: 439.88 ng/ml

Instrument :
 ECD_P
 ClientSampleId :
 AR1248CCC500



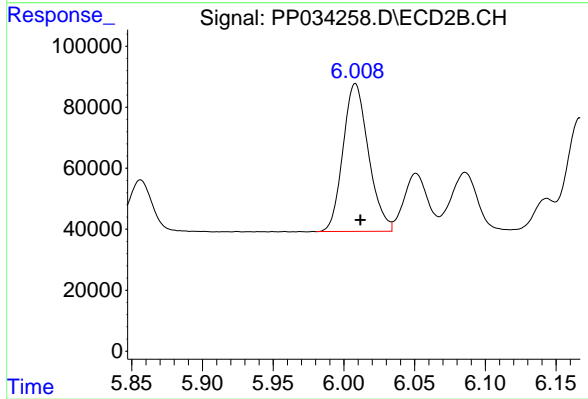
#23 AR-1248-3

R.T.: 5.823 min
 Delta R.T.: -0.004 min
 Response: 534314
 Conc: 506.67 ng/ml



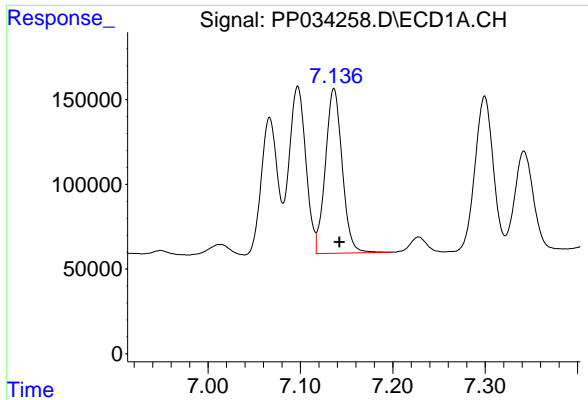
#24 AR-1248-4

R.T.: 7.097 min
 Delta R.T.: -0.006 min
 Response: 1241013
 Conc: 480.32 ng/ml



#24 AR-1248-4

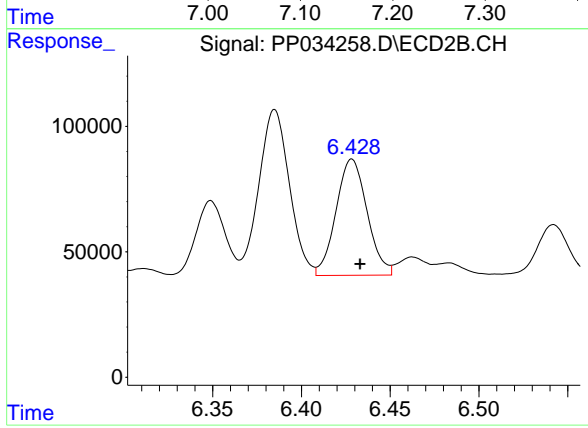
R.T.: 6.008 min
 Delta R.T.: -0.004 min
 Response: 607495
 Conc: 495.03 ng/ml



#25 AR-1248-5

R.T.: 7.136 min
Delta R.T.: -0.006 min
Response: 1228420
Conc: 473.37 ng/ml

Instrument :
ECD_P
ClientSampleId :
AR1248CCC500



#25 AR-1248-5

R.T.: 6.428 min
Delta R.T.: -0.005 min
Response: 564998
Conc: 559.60 ng/ml