

Data Path : Z:\pestpcbsrv\HPCHEM1\ECD_P\Data\PP032222\
 Data File : PP044974.D
 Signal(s) : Signal #1: ECD1A.ch Signal #2: ECD2B.ch
 Acq On : 22 Mar 2022 11:56
 Operator : YP\AJ
 Sample : AR1660CCC500
 Misc :
 ALS Vial : 3 Sample Multiplier: 1

Instrument :
 ECD_P
 ClientSampleId :

Integration File signal 1: autoint1.e
 Integration File signal 2: autoint2.e
 Quant Time: Mar 23 04:54:10 2022
 Quant Method : Z:\pestpcbsrv\HPCHEM1\ECD_P\methods\PP031722.M
 Quant Title : GC EXTRACTABLES
 QLast Update : Thu Mar 17 04:32:40 2022
 Response via : Initial Calibration
 Integrator: ChemStation

Volume Inj. : 2 µl
 Signal #1 Phase : ZB-MR1 Signal #2 Phase: ZB-MR2
 Signal #1 Info : 30Mx0.32mmx 0.50µ Signal #2 Info : 30M x 0.32mm x 0.25µm

| Compound | RT#1 | RT#2 | Resp#1 | Resp#2 | ng/ml | ng/ml |
|-----------------------------|--------|-------|----------|----------|----------|-----------|
| ----- | | | | | | |
| System Monitoring Compounds | | | | | | |
| 1) SA Tetrachlo... | 3.898 | 3.156 | 97865588 | 75544256 | 53.712 | 57.324 |
| 2) SA Decachlor... | 10.024 | 8.512 | 65649916 | 69036710 | 50.999 | 53.131 |
| Target Compounds | | | | | | |
| 3) L1 AR-1016-1 | 5.149 | 4.297 | 30847482 | 29363294 | 525.693 | 579.669 |
| 4) L1 AR-1016-2 | 5.172 | 4.316 | 45392265 | 41055855 | 507.768 | 569.522 |
| 5) L1 AR-1016-3 | 5.238 | 4.500 | 27289329 | 22869567 | 524.360 | 581.257 |
| 6) L1 AR-1016-4 | 5.344 | 4.550 | 22562328 | 18746752 | 527.281 | 595.447 |
| 7) L1 AR-1016-5 | 5.664 | 4.773 | 22335008 | 23850706 | 508.943 | 597.534 |
| 8) L2 AR-1221-1 | 4.163f | 3.381 | 130417 | 3012554 | 6.354 | 202.958 # |
| 9) L2 AR-1221-2 | 4.216f | 3.471 | 4855277 | 4337177 | 317.595 | 350.087 |
| 10) L2 AR-1221-3 | 4.296f | 3.550 | 17597945 | 16068789 | 364.458 | 413.972 |
| 11) L3 AR-1232-1 | 4.296 | 3.550 | 17597945 | 16068789 | 391.090 | 447.081 |
| 12) L3 AR-1232-2 | 4.859 | 4.316 | 23360585 | 41055855 | 1111.711 | 1187.189 |
| 13) L3 AR-1232-3 | 5.172 | 4.500 | 45392265 | 22869567 | 1088.066 | 1221.050 |
| 14) L3 AR-1232-4 | 5.344 | 4.592 | 22562328 | 22600895 | 1128.163 | 1365.248 |
| 15) L3 AR-1232-5 | 5.446 | 4.773 | 18342570 | 23850706 | 1298.058 | 1289.916 |
| 16) L4 AR-1242-1 | 5.149 | 4.297 | 30847482 | 29363294 | 672.261 | 735.055 |
| 17) L4 AR-1242-2 | 5.172 | 4.316 | 45392265 | 41055855 | 648.193 | 723.327 |
| 18) L4 AR-1242-3 | 5.238 | 4.500 | 27289329 | 22869567 | 664.433 | 733.393 |
| 19) L4 AR-1242-4 | 5.344 | 4.592 | 22562328 | 22600895 | 655.956 | 745.907 |
| 20) L4 AR-1242-5 | 6.145 | 5.149 | 3465223 | 18002091 | 94.761 | 452.539 # |
| 21) L5 AR-1248-1 | 5.149 | 4.297 | 30847482 | 29363294 | 877.066 | 929.780 |
| 22) L5 AR-1248-2 | 5.446 | 4.550 | 18342570 | 18746752 | 387.754 | 428.662 |
| 23) L5 AR-1248-3 | 5.664 | 4.592 | 22335008 | 22600895 | 378.007 | 494.610 # |
| 24) L5 AR-1248-4 | 6.104 | 4.773 | 3971976 | 23850706 | 62.590 | 441.502 # |
| 25) L5 AR-1248-5 | 6.145 | 5.193 | 3465223 | 3303736 | 55.537 | 58.845 |
| 26) L6 AR-1254-1 | 6.074 | 5.149 | 14907842 | 18002091 | 224.518 | 208.174 |
| 27) L6 AR-1254-2 | 6.313 | 5.310 | 15713274 | 16489259 | 157.272 | 221.589 # |
| 28) L6 AR-1254-3 | 6.713 | 5.758 | 8841774 | 30504938 | 86.447 | 265.492 # |
| 29) L6 AR-1254-4 | 7.027 | 5.990 | 5990892 | 4667958 | 82.366 | 62.610 |
| 30) L6 AR-1254-5 | 7.486 | 6.441 | 44935811 | 52403806 | 580.991 | 508.915 |
| 31) L7 AR-1260-1 | 6.893 | 5.882 | 34133437 | 40857082 | 495.796 | 580.267 |
| 32) L7 AR-1260-2 | 7.176 | 6.088 | 38476392 | 47926142 | 495.578 | 535.913 |
| 33) L7 AR-1260-3 | 7.571 | 6.250 | 30785692 | 45217147 | 489.235 | 530.909 |
| 34) L7 AR-1260-4 | 7.819 | 6.762 | 35471385 | 38072538 | 483.552 | 566.496 |
| 35) L7 AR-1260-5 | 8.161 | 7.030 | 66981900 | 85923304 | 478.328 | 549.885 |
| 36) L8 AR-1262-1 | 7.571 | 6.482 | 30785692 | 41222914 | 324.707 | 400.404 |
| 37) L8 AR-1262-2 | 8.161 | 6.762 | 66981900 | 38072538 | 416.226 | 412.477 |
| 38) L8 AR-1262-3 | 8.503 | 7.336 | 42376506 | 21036038 | 392.853 | 289.057 # |
| 39) L8 AR-1262-4 | 8.584 | 7.406 | 11905980 | 64011283 | 232.782 | 476.247 # |
| 40) L8 AR-1262-5 | 9.264 | 7.949 | 19667871 | 24971168 | 351.849 | 379.291 |
| 41) L9 AR-1268-1 | 8.503 | 7.336 | 42376506 | 21036038 | 220.137 | 97.483 # |

Data Path : Z:\pestpcbsrv\HPCHEM1\ECD_P\Data\PP032222\
 Data File : PP044974.D
 Signal(s) : Signal #1: ECD1A.ch Signal #2: ECD2B.ch
 Acq On : 22 Mar 2022 11:56
 Operator : YP\AJ
 Sample : AR1660CCC500
 Misc :
 ALS Vial : 3 Sample Multiplier: 1

Instrument :
 ECD_P
 ClientSampleId :

Integration File signal 1: autoint1.e
 Integration File signal 2: autoint2.e
 Quant Time: Mar 23 04:54:10 2022
 Quant Method : Z:\pestpcbsrv\HPCHEM1\ECD_P\methods\PP031722.M
 Quant Title : GC EXTRACTABLES
 QLast Update : Thu Mar 17 04:32:40 2022
 Response via : Initial Calibration
 Integrator: ChemStation

Volume Inj. : 2 µl
 Signal #1 Phase : ZB-MR1 Signal #2 Phase: ZB-MR2
 Signal #1 Info : 30Mx0.32mmx 0.50µ Signal #2 Info : 30M x 0.32mm x 0.25µm

| | Compound | RT#1 | RT#2 | Resp#1 | Resp#2 | ng/ml | ng/ml |
|-----|--------------|-------|-------|----------|----------|---------|-----------|
| 42) | L9 AR-1268-2 | 8.584 | 7.406 | 11905980 | 64011283 | 68.196 | 327.335 # |
| 43) | L9 AR-1268-3 | 8.822 | 7.627 | 957741 | 1143637 | 6.271 | 6.943 |
| 44) | L9 AR-1268-4 | 9.264 | 7.949 | 19667871 | 24971168 | 314.235 | 326.042 |
| 45) | L9 AR-1268-5 | 9.685 | 8.253 | 5873678 | 7096756 | 12.190 | 13.772 |

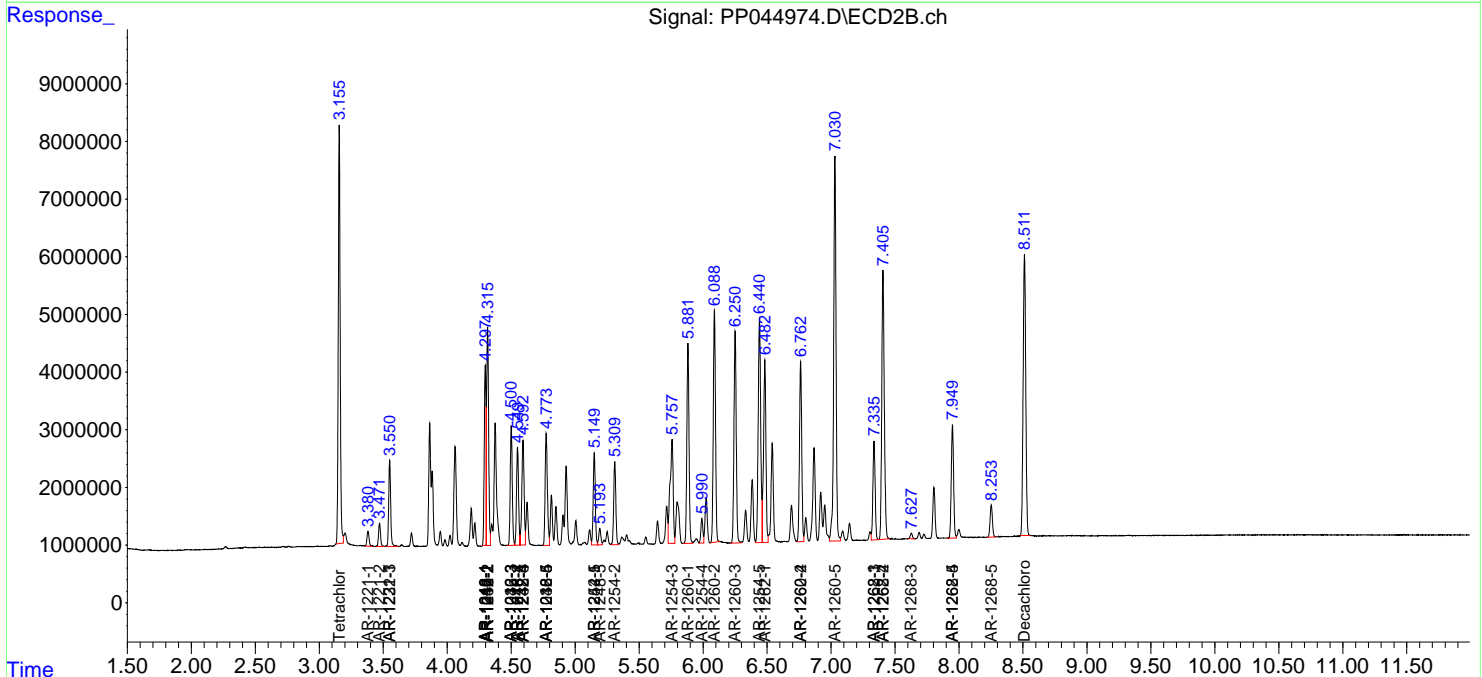
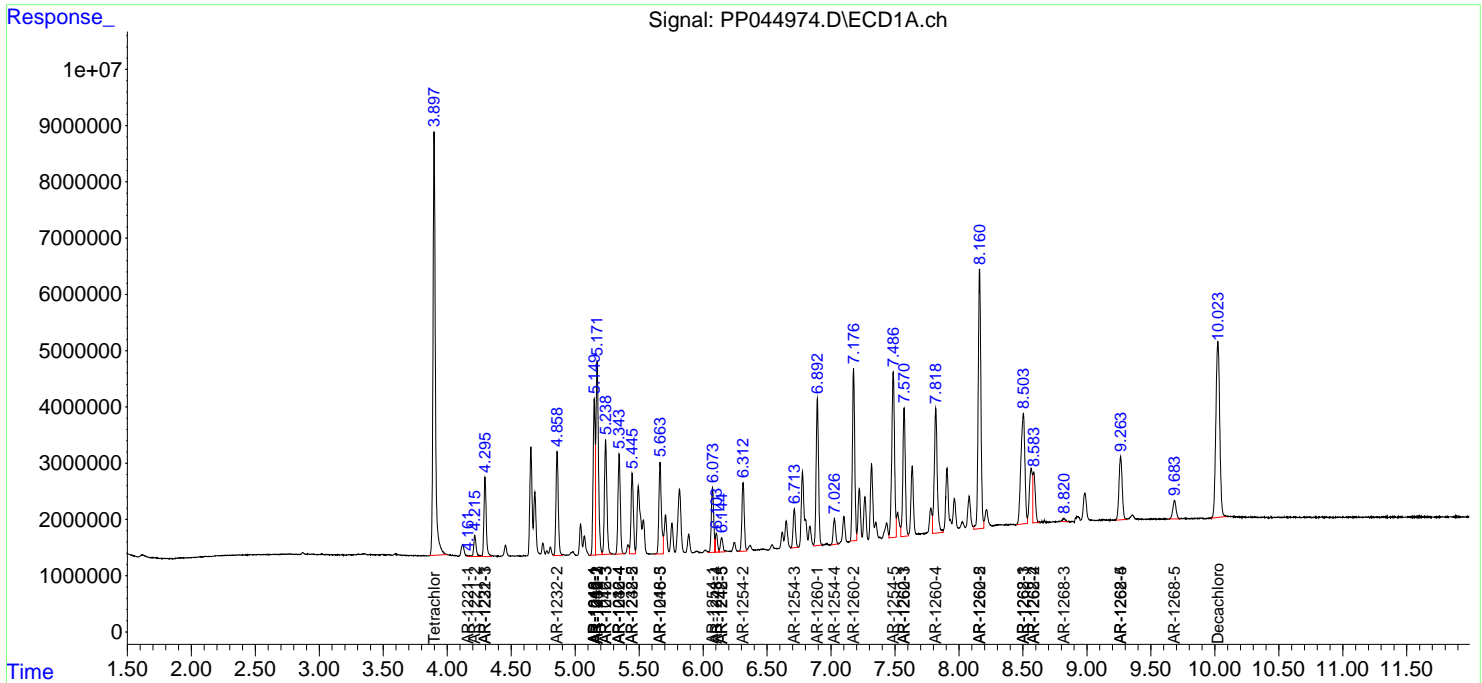
(f)=RT Delta > 1/2 Window (#)=Amounts differ by > 25% (m)=manual int.

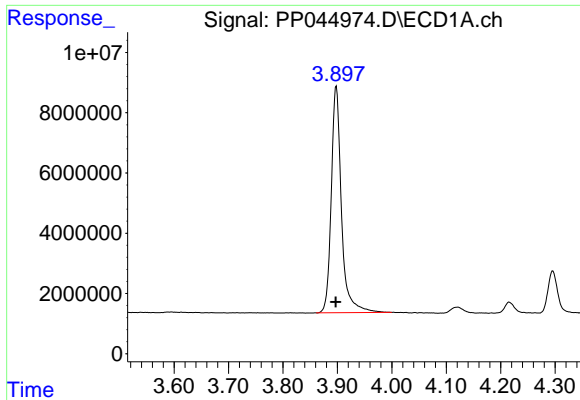
Data Path : Z:\pestpcbsrv\HPCHEM1\ECD_P\Data\PP032222\
 Data File : PP044974.D
 Signal(s) : Signal #1: ECD1A.ch Signal #2: ECD2B.ch
 Acq On : 22 Mar 2022 11:56
 Operator : YP\AJ
 Sample : AR1660CCC500
 Misc :
 ALS Vial : 3 Sample Multiplier: 1

Instrument :
 ECD_P
 ClientSampleId :

Integration File signal 1: autoint1.e
 Integration File signal 2: autoint2.e
 Quant Time: Mar 23 04:54:10 2022
 Quant Method : Z:\pestpcbsrv\HPCHEM1\ECD_P\methods\PP031722.M
 Quant Title : GC EXTRACTABLES
 QLast Update : Thu Mar 17 04:32:40 2022
 Response via : Initial Calibration
 Integrator: ChemStation

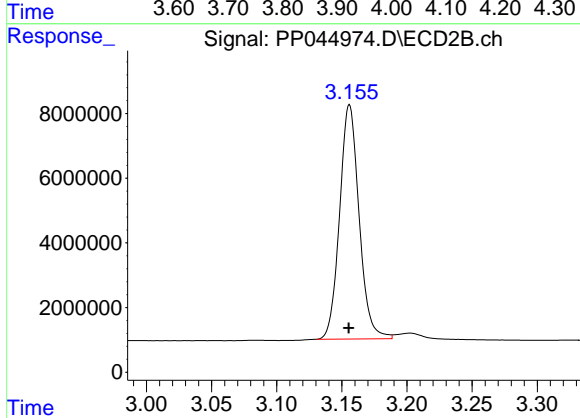
Volume Inj. : 2 µl
 Signal #1 Phase : ZB-MR1 Signal #2 Phase: ZB-MR2
 Signal #1 Info : 30Mx0.32mmx 0.50µ Signal #2 Info : 30M x 0.32mm x 0.25µm



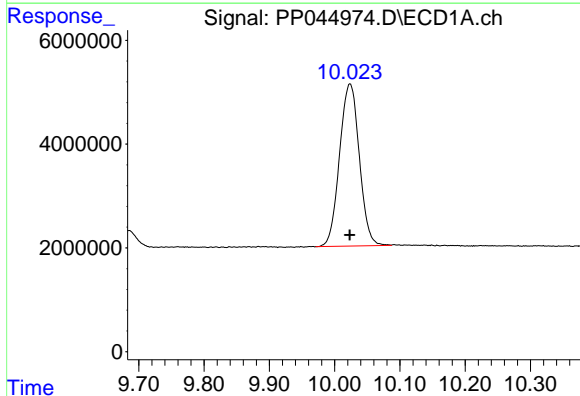


#1 Tetrachloro-m-xylene
 R.T.: 3.898 min
 Delta R.T.: 0.000 min
 Response: 97865588
 Conc: 53.71 ng/ml

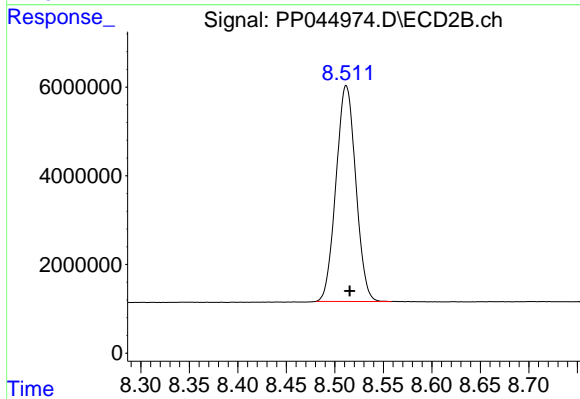
Instrument :
 ECD_P
 ClientSampleId :



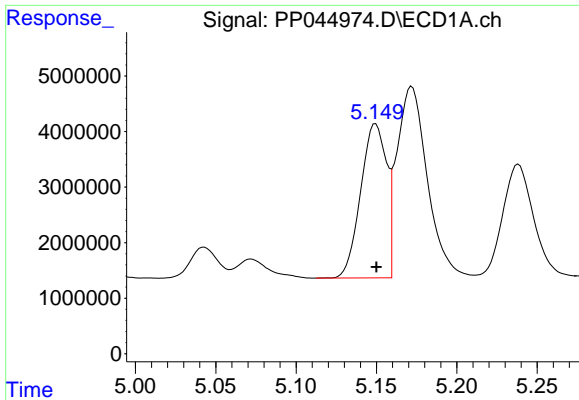
#1 Tetrachloro-m-xylene
 R.T.: 3.156 min
 Delta R.T.: 0.000 min
 Response: 75544256
 Conc: 57.32 ng/ml



#2 Decachlorobiphenyl
 R.T.: 10.024 min
 Delta R.T.: 0.000 min
 Response: 65649916
 Conc: 51.00 ng/ml



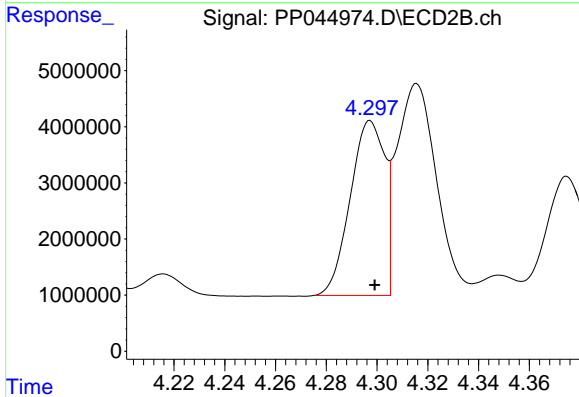
#2 Decachlorobiphenyl
 R.T.: 8.512 min
 Delta R.T.: -0.004 min
 Response: 69036710
 Conc: 53.13 ng/ml



#3 AR-1016-1

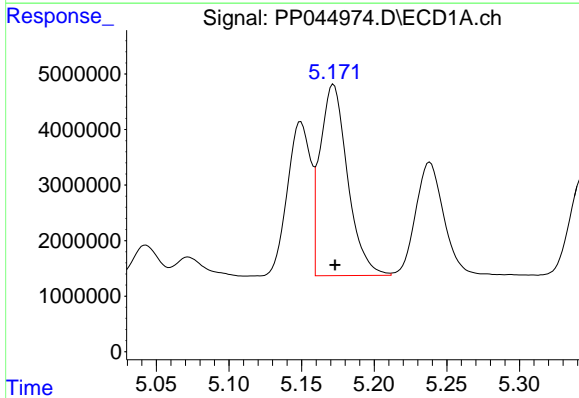
R.T.: 5.149 min
 Delta R.T.: 0.000 min
 Response: 30847482
 Conc: 525.69 ng/ml

Instrument :
 ECD_P
 ClientSampleId :



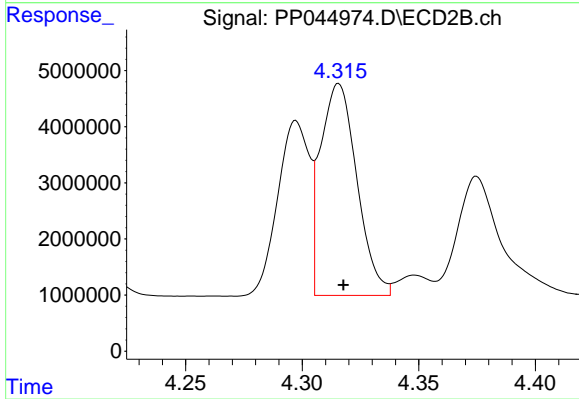
#3 AR-1016-1

R.T.: 4.297 min
 Delta R.T.: -0.002 min
 Response: 29363294
 Conc: 579.67 ng/ml



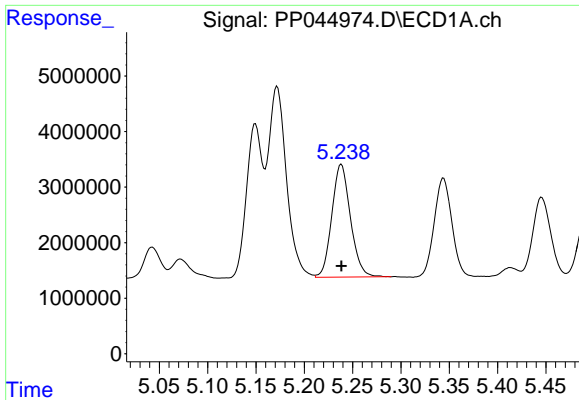
#4 AR-1016-2

R.T.: 5.172 min
 Delta R.T.: 0.000 min
 Response: 45392265
 Conc: 507.77 ng/ml



#4 AR-1016-2

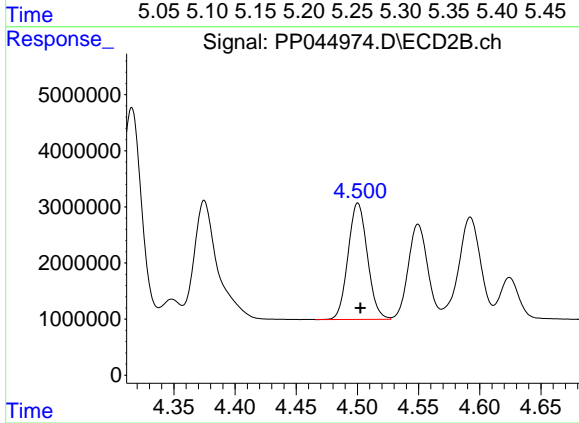
R.T.: 4.316 min
 Delta R.T.: -0.002 min
 Response: 41055855
 Conc: 569.52 ng/ml



#5 AR-1016-3

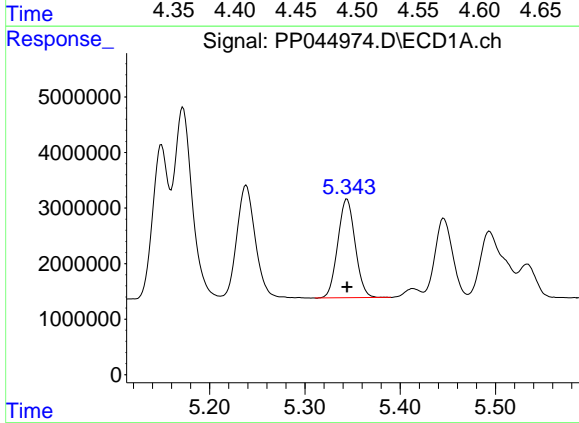
R.T.: 5.238 min
 Delta R.T.: 0.000 min
 Response: 27289329
 Conc: 524.36 ng/ml

Instrument :
 ECD_P
 ClientSampleId :



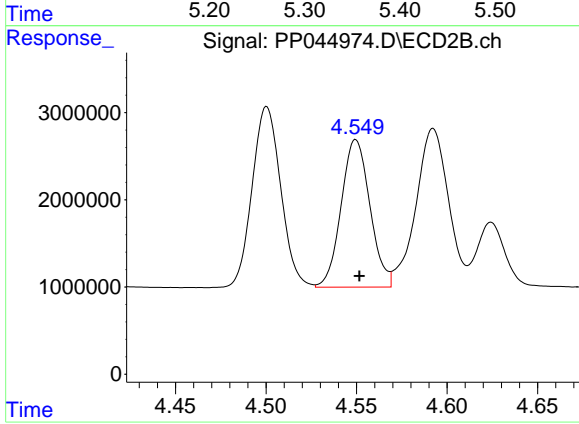
#5 AR-1016-3

R.T.: 4.500 min
 Delta R.T.: -0.002 min
 Response: 22869567
 Conc: 581.26 ng/ml



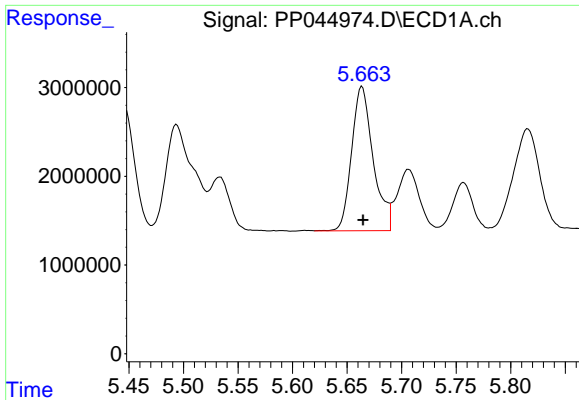
#6 AR-1016-4

R.T.: 5.344 min
 Delta R.T.: 0.000 min
 Response: 22562328
 Conc: 527.28 ng/ml



#6 AR-1016-4

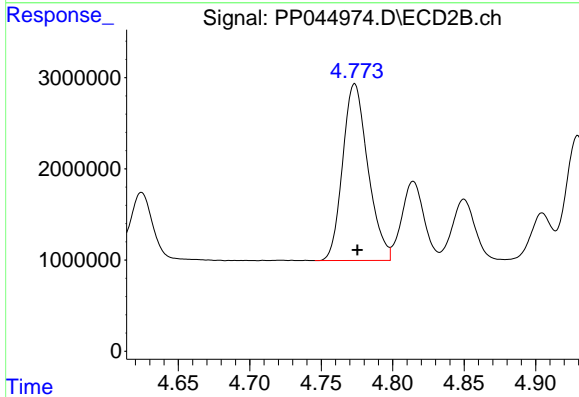
R.T.: 4.550 min
 Delta R.T.: -0.002 min
 Response: 18746752
 Conc: 595.45 ng/ml



#7 AR-1016-5

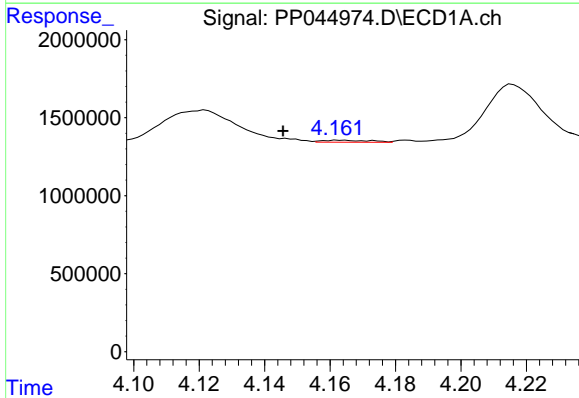
R.T.: 5.664 min
 Delta R.T.: 0.000 min
 Response: 22335008
 Conc: 508.94 ng/ml

Instrument :
 ECD_P
 ClientSampleId :



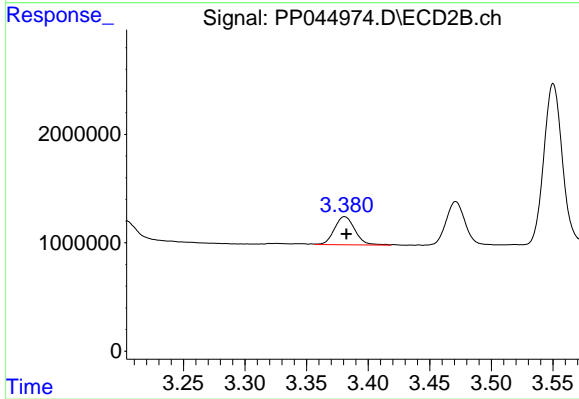
#7 AR-1016-5

R.T.: 4.773 min
 Delta R.T.: -0.002 min
 Response: 23850706
 Conc: 597.53 ng/ml



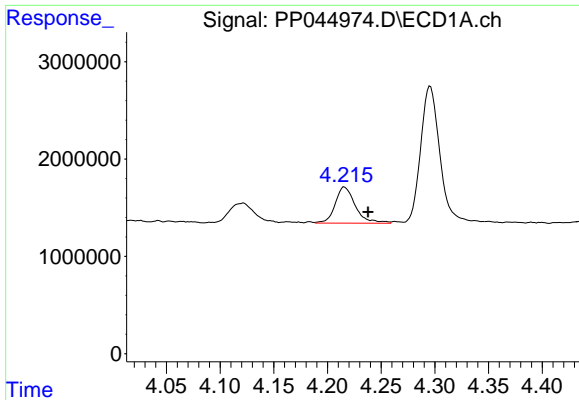
#8 AR-1221-1

R.T.: 4.163 min
 Delta R.T.: 0.017 min
 Response: 130417
 Conc: 6.35 ng/ml



#8 AR-1221-1

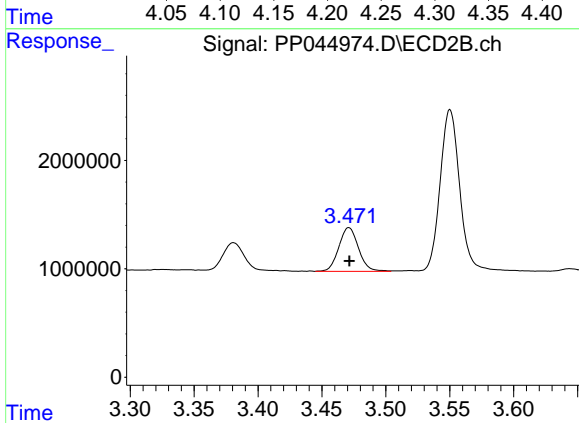
R.T.: 3.381 min
 Delta R.T.: -0.002 min
 Response: 3012554
 Conc: 202.96 ng/ml



#9 AR-1221-2

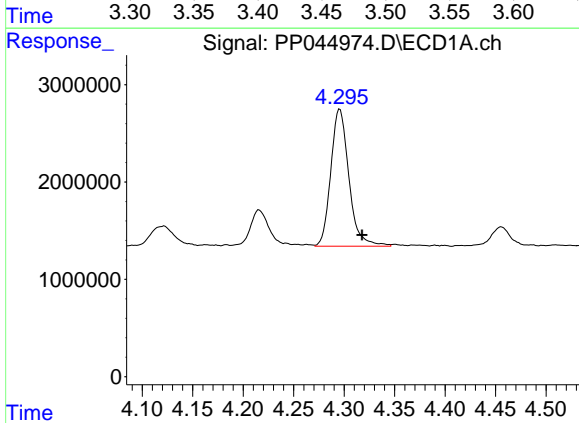
R.T.: 4.216 min
 Delta R.T.: -0.022 min
 Response: 4855277
 Conc: 317.59 ng/ml

Instrument :
 ECD_P
 ClientSampleId :



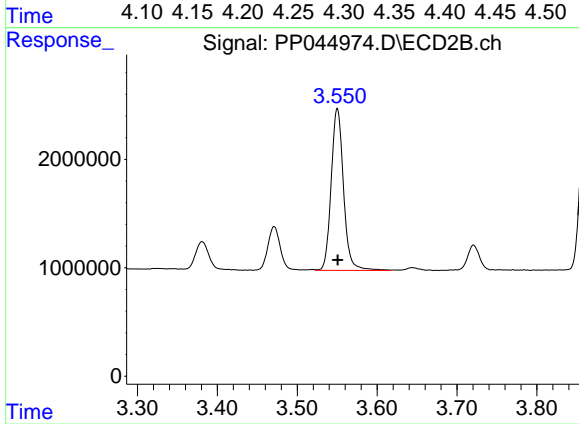
#9 AR-1221-2

R.T.: 3.471 min
 Delta R.T.: 0.000 min
 Response: 4337177
 Conc: 350.09 ng/ml



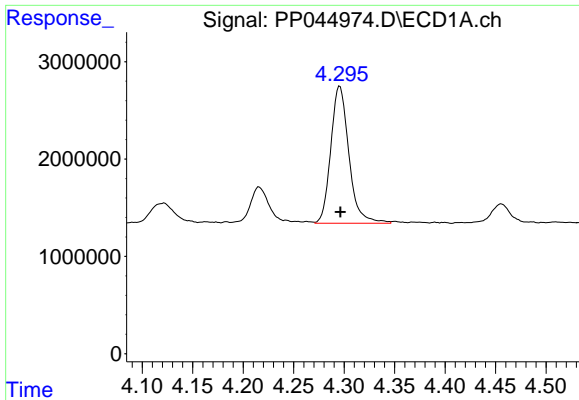
#10 AR-1221-3

R.T.: 4.296 min
 Delta R.T.: -0.022 min
 Response: 17597945
 Conc: 364.46 ng/ml



#10 AR-1221-3

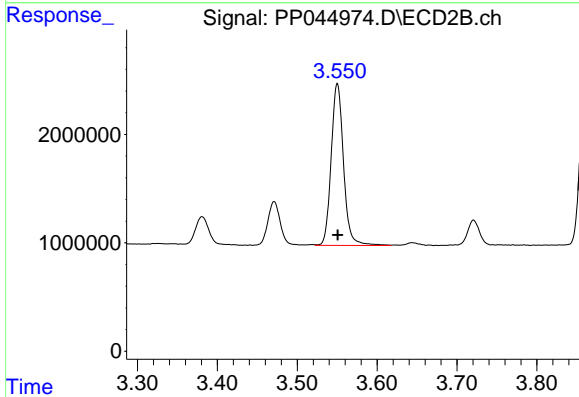
R.T.: 3.550 min
 Delta R.T.: 0.000 min
 Response: 16068789
 Conc: 413.97 ng/ml



#11 AR-1232-1

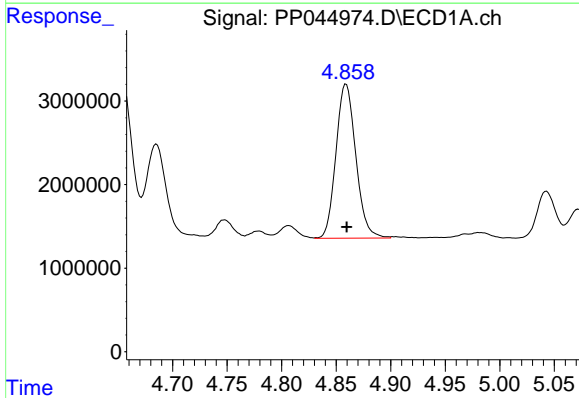
R.T.: 4.296 min
 Delta R.T.: 0.000 min
 Response: 17597945
 Conc: 391.09 ng/ml

Instrument :
 ECD_P
 ClientSampleId :



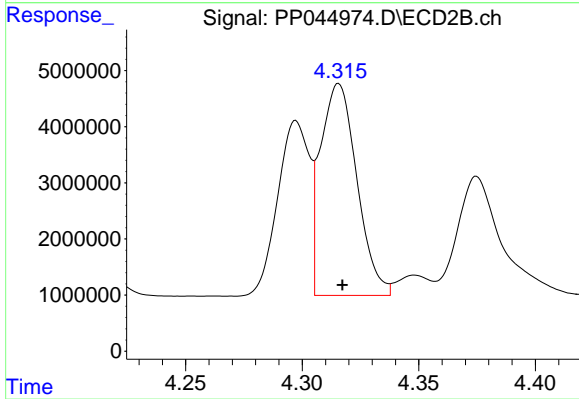
#11 AR-1232-1

R.T.: 3.550 min
 Delta R.T.: 0.000 min
 Response: 16068789
 Conc: 447.08 ng/ml



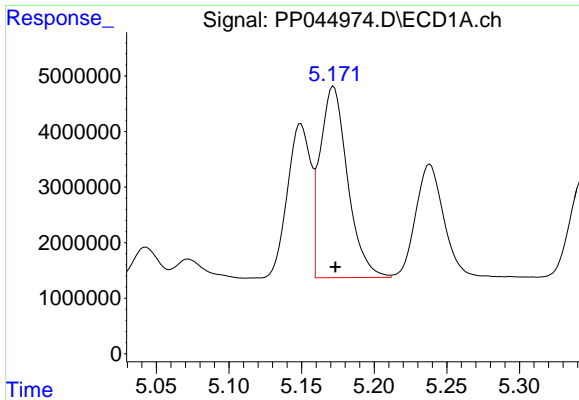
#12 AR-1232-2

R.T.: 4.859 min
 Delta R.T.: 0.000 min
 Response: 23360585
 Conc: 1111.71 ng/ml



#12 AR-1232-2

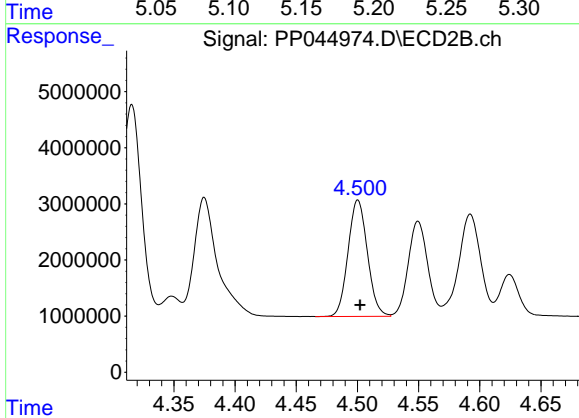
R.T.: 4.316 min
 Delta R.T.: -0.002 min
 Response: 41055855
 Conc: 1187.19 ng/ml



#13 AR-1232-3

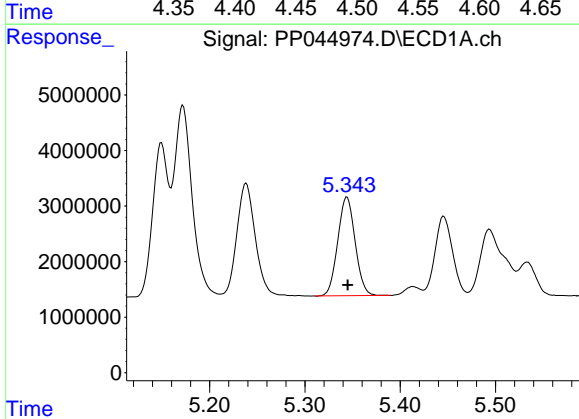
R.T.: 5.172 min
 Delta R.T.: -0.001 min
 Response: 45392265
 Conc: 1088.07 ng/m

Instrument :
 ECD_P
 ClientSampleId :



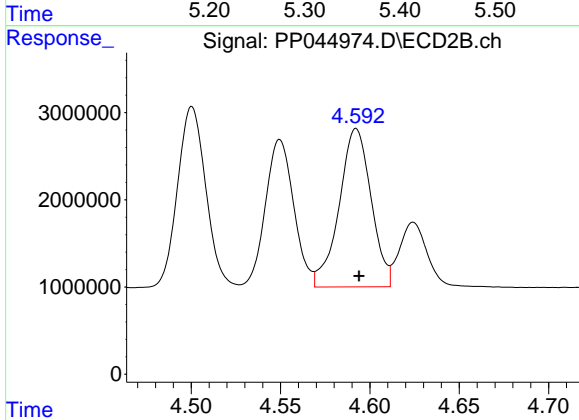
#13 AR-1232-3

R.T.: 4.500 min
 Delta R.T.: -0.002 min
 Response: 22869567
 Conc: 1221.05 ng/ml



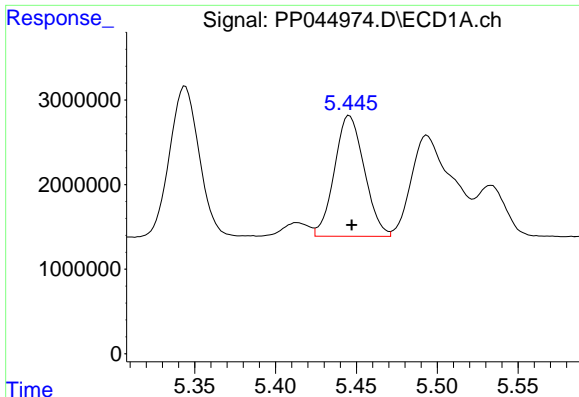
#14 AR-1232-4

R.T.: 5.344 min
 Delta R.T.: 0.000 min
 Response: 22562328
 Conc: 1128.16 ng/ml



#14 AR-1232-4

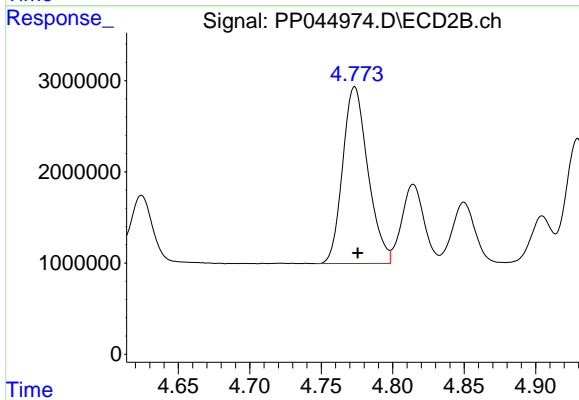
R.T.: 4.592 min
 Delta R.T.: -0.002 min
 Response: 22600895
 Conc: 1365.25 ng/ml



#15 AR-1232-5

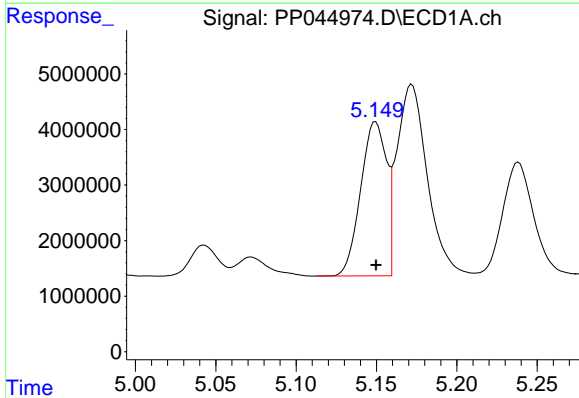
R.T.: 5.446 min
 Delta R.T.: -0.001 min
 Response: 18342570
 Conc: 1298.06 ng/ml

Instrument :
 ECD_P
 ClientSampleId :



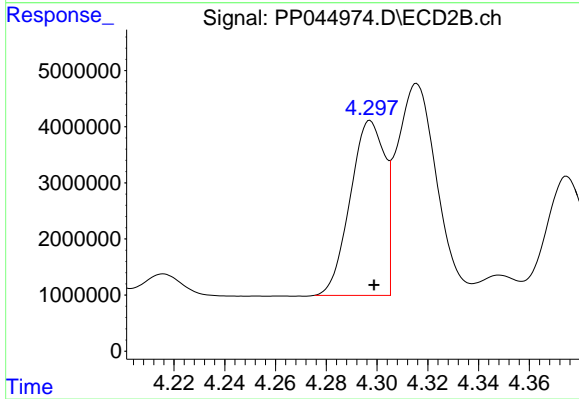
#15 AR-1232-5

R.T.: 4.773 min
 Delta R.T.: -0.002 min
 Response: 23850706
 Conc: 1289.92 ng/ml



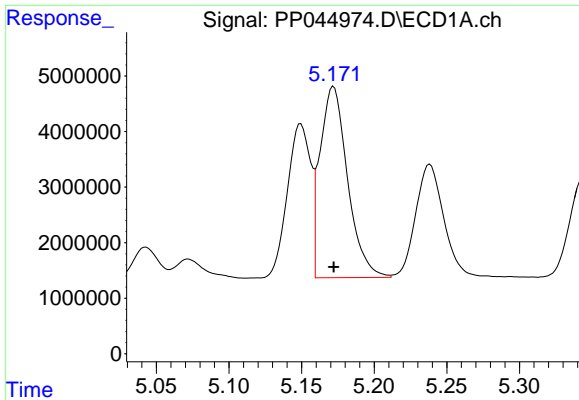
#16 AR-1242-1

R.T.: 5.149 min
 Delta R.T.: 0.000 min
 Response: 30847482
 Conc: 672.26 ng/ml



#16 AR-1242-1

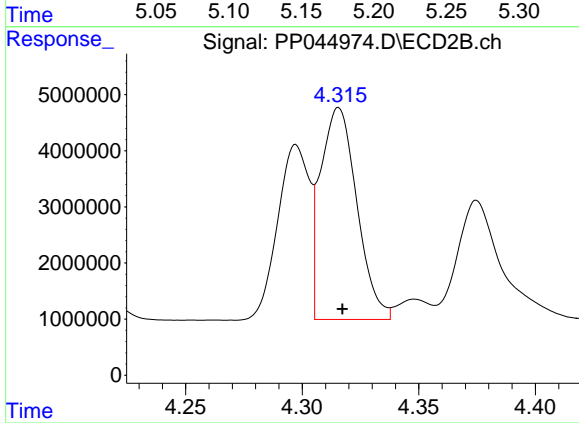
R.T.: 4.297 min
 Delta R.T.: -0.002 min
 Response: 29363294
 Conc: 735.05 ng/ml



#17 AR-1242-2

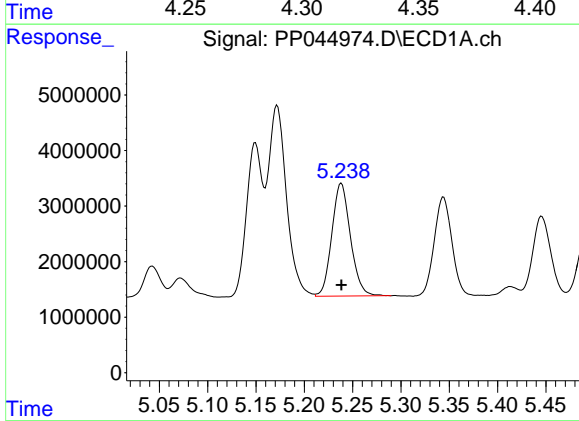
R.T.: 5.172 min
 Delta R.T.: 0.000 min
 Response: 45392265
 Conc: 648.19 ng/ml

Instrument :
 ECD_P
 ClientSampleId :



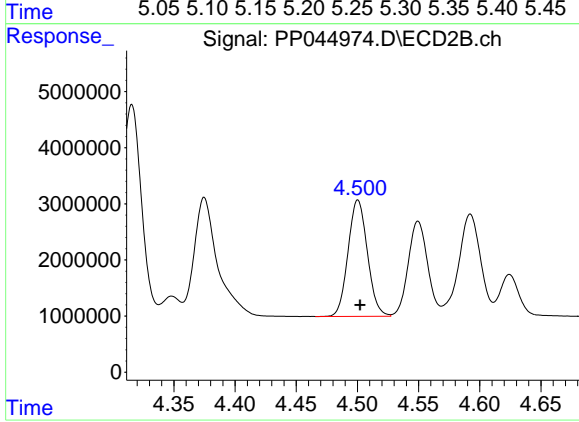
#17 AR-1242-2

R.T.: 4.316 min
 Delta R.T.: -0.002 min
 Response: 41055855
 Conc: 723.33 ng/ml



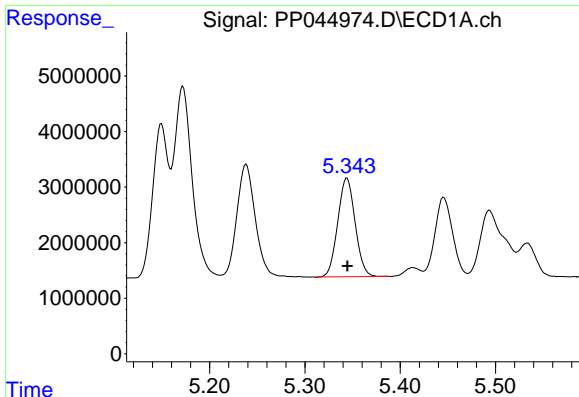
#18 AR-1242-3

R.T.: 5.238 min
 Delta R.T.: 0.000 min
 Response: 27289329
 Conc: 664.43 ng/ml



#18 AR-1242-3

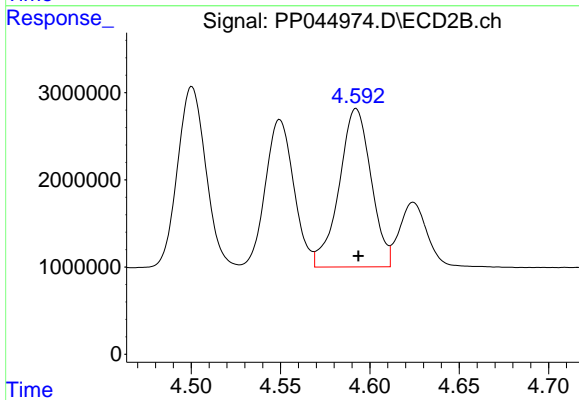
R.T.: 4.500 min
 Delta R.T.: -0.002 min
 Response: 22869567
 Conc: 733.39 ng/ml



#19 AR-1242-4

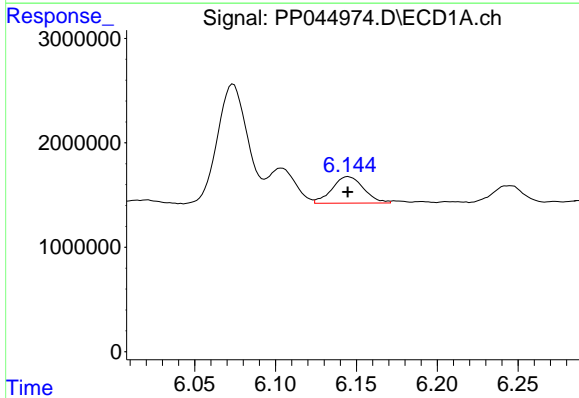
R.T.: 5.344 min
 Delta R.T.: 0.000 min
 Response: 22562328
 Conc: 655.96 ng/ml

Instrument :
 ECD_P
 ClientSampleId :



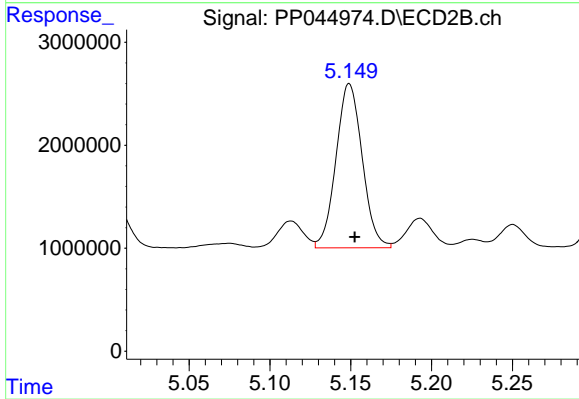
#19 AR-1242-4

R.T.: 4.592 min
 Delta R.T.: -0.001 min
 Response: 22600895
 Conc: 745.91 ng/ml



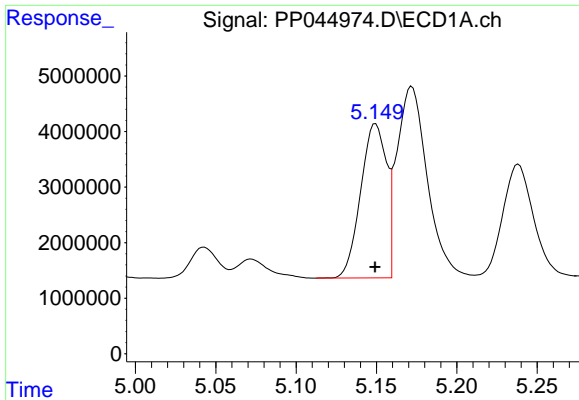
#20 AR-1242-5

R.T.: 6.145 min
 Delta R.T.: 0.000 min
 Response: 3465223
 Conc: 94.76 ng/ml



#20 AR-1242-5

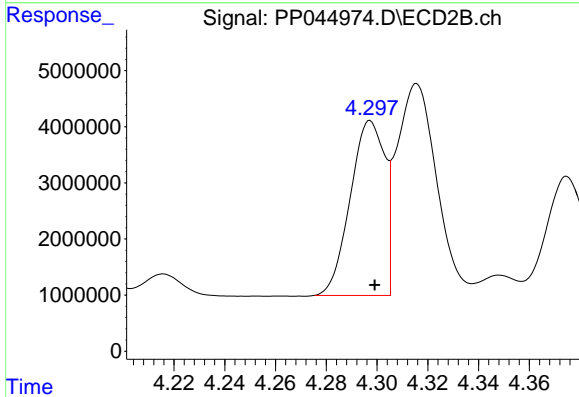
R.T.: 5.149 min
 Delta R.T.: -0.003 min
 Response: 18002091
 Conc: 452.54 ng/ml



#21 AR-1248-1

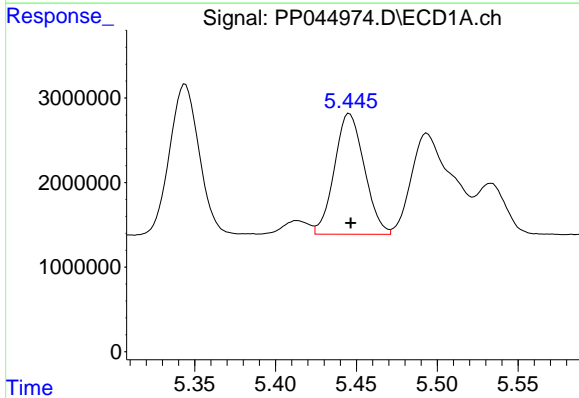
R.T.: 5.149 min
 Delta R.T.: 0.000 min
 Response: 30847482
 Conc: 877.07 ng/ml

Instrument :
 ECD_P
 ClientSampleId :



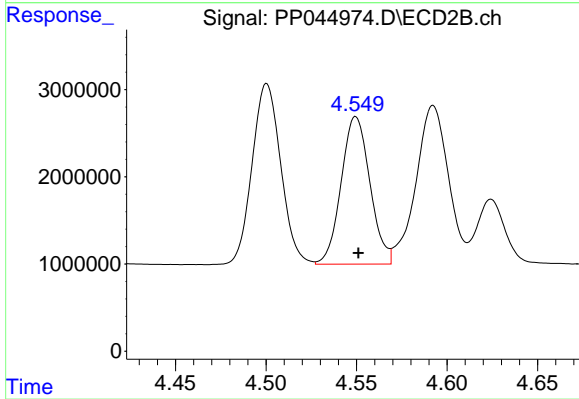
#21 AR-1248-1

R.T.: 4.297 min
 Delta R.T.: -0.002 min
 Response: 29363294
 Conc: 929.78 ng/ml



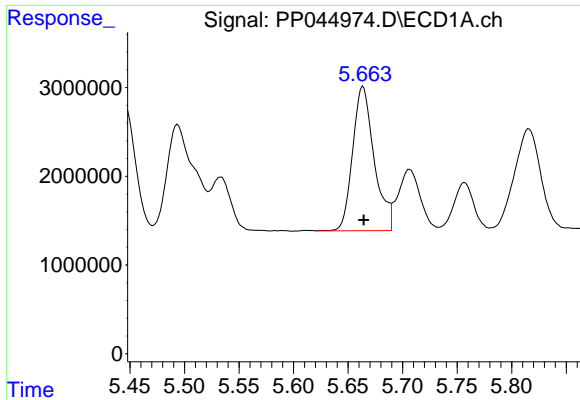
#22 AR-1248-2

R.T.: 5.446 min
 Delta R.T.: 0.000 min
 Response: 18342570
 Conc: 387.75 ng/ml



#22 AR-1248-2

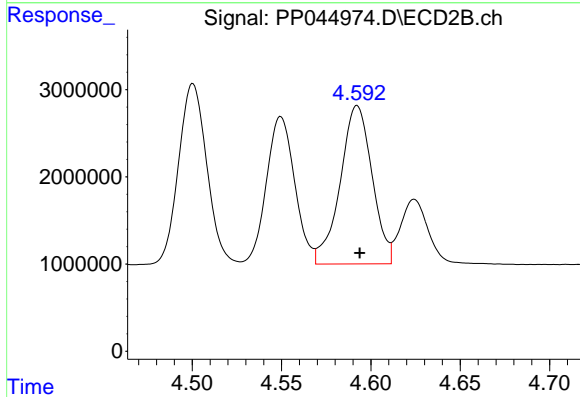
R.T.: 4.550 min
 Delta R.T.: -0.001 min
 Response: 18746752
 Conc: 428.66 ng/ml



#23 AR-1248-3

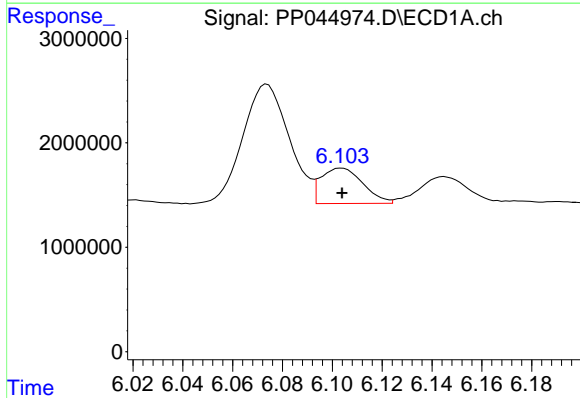
R.T.: 5.664 min
 Delta R.T.: 0.000 min
 Response: 22335008
 Conc: 378.01 ng/ml

Instrument :
 ECD_P
 ClientSampleId :



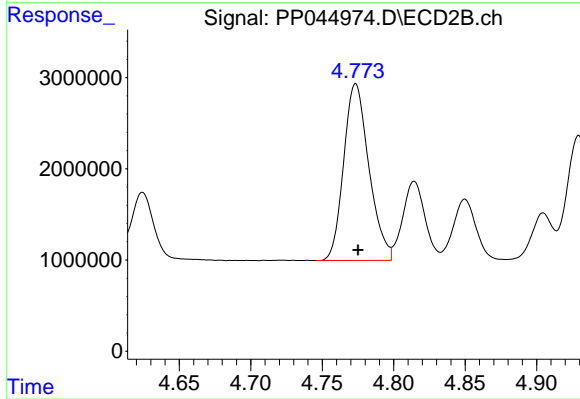
#23 AR-1248-3

R.T.: 4.592 min
 Delta R.T.: -0.001 min
 Response: 22600895
 Conc: 494.61 ng/ml



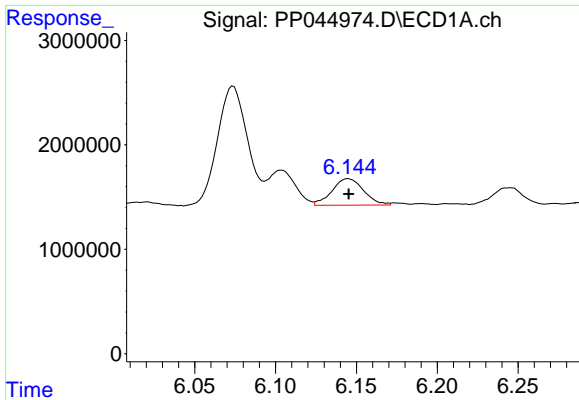
#24 AR-1248-4

R.T.: 6.104 min
 Delta R.T.: 0.000 min
 Response: 3971976
 Conc: 62.59 ng/ml



#24 AR-1248-4

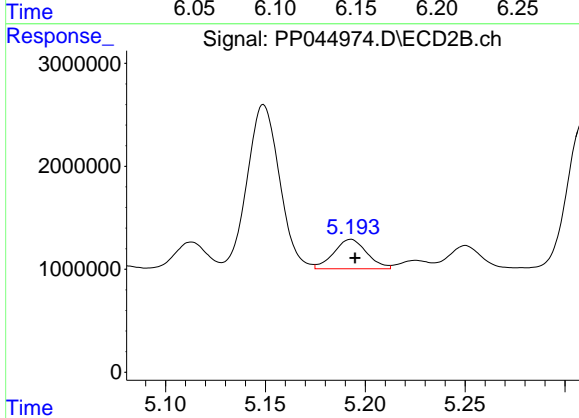
R.T.: 4.773 min
 Delta R.T.: -0.002 min
 Response: 23850706
 Conc: 441.50 ng/ml



#25 AR-1248-5

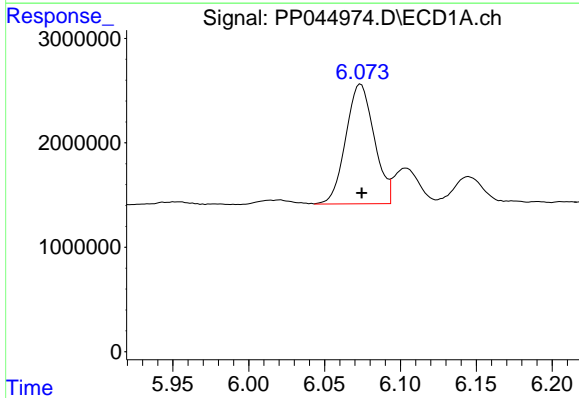
R.T.: 6.145 min
 Delta R.T.: 0.000 min
 Response: 3465223
 Conc: 55.54 ng/ml

Instrument :
 ECD_P
 ClientSampleId :



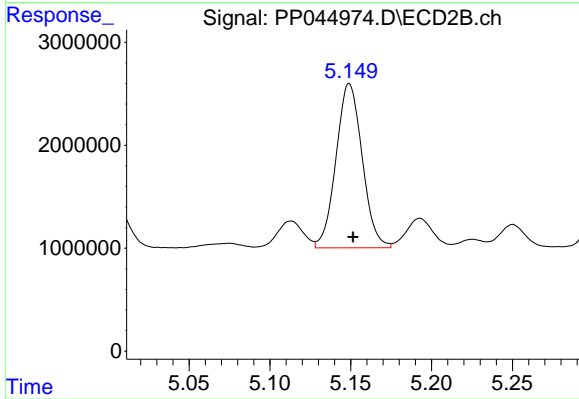
#25 AR-1248-5

R.T.: 5.193 min
 Delta R.T.: -0.002 min
 Response: 3303736
 Conc: 58.84 ng/ml



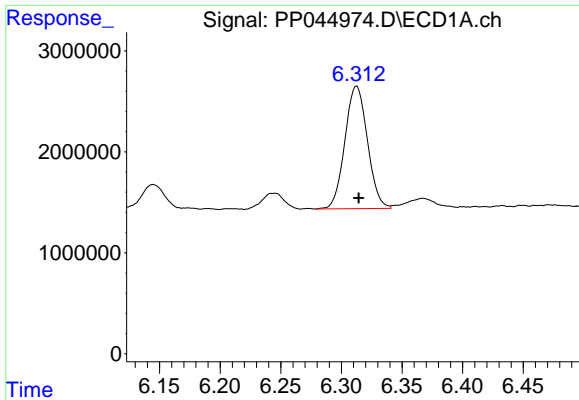
#26 AR-1254-1

R.T.: 6.074 min
 Delta R.T.: 0.000 min
 Response: 14907842
 Conc: 224.52 ng/ml



#26 AR-1254-1

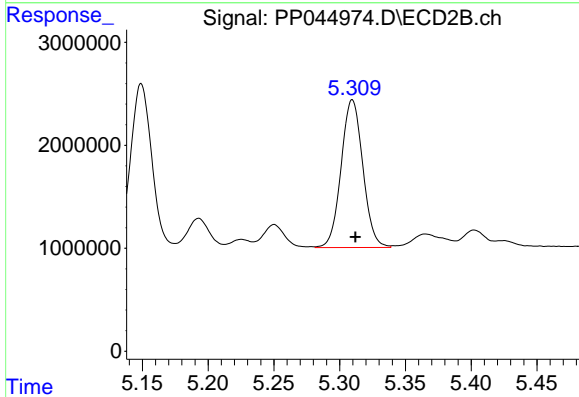
R.T.: 5.149 min
 Delta R.T.: -0.002 min
 Response: 18002091
 Conc: 208.17 ng/ml



#27 AR-1254-2

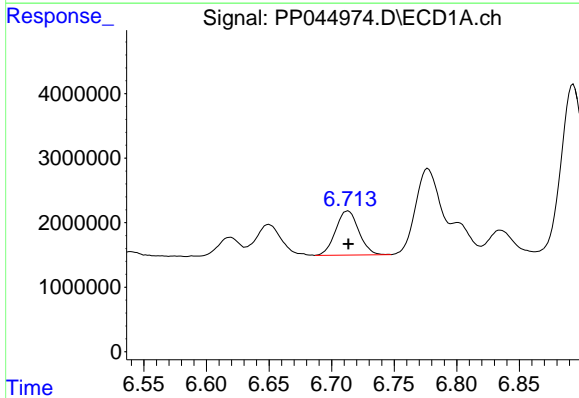
R.T.: 6.313 min
 Delta R.T.: -0.001 min
 Response: 15713274
 Conc: 157.27 ng/ml

Instrument :
 ECD_P
 ClientSampleId :



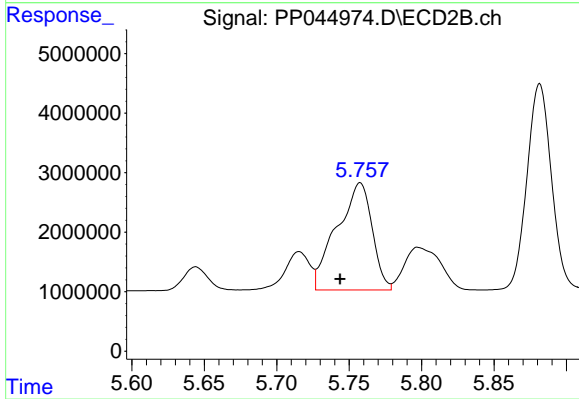
#27 AR-1254-2

R.T.: 5.310 min
 Delta R.T.: -0.002 min
 Response: 16489259
 Conc: 221.59 ng/ml



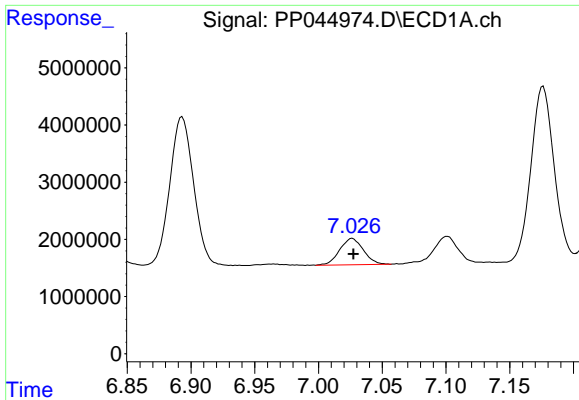
#28 AR-1254-3

R.T.: 6.713 min
 Delta R.T.: 0.000 min
 Response: 8841774
 Conc: 86.45 ng/ml



#28 AR-1254-3

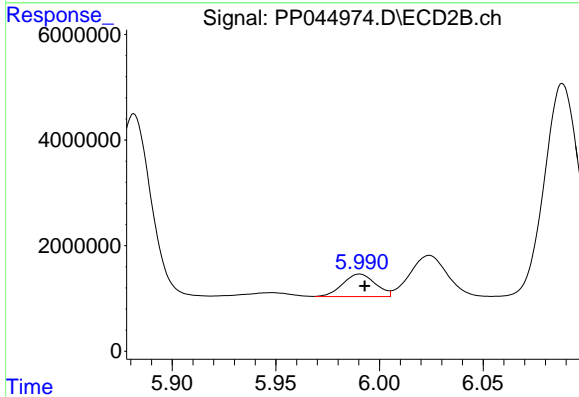
R.T.: 5.758 min
 Delta R.T.: 0.014 min
 Response: 30504938
 Conc: 265.49 ng/ml



#29 AR-1254-4

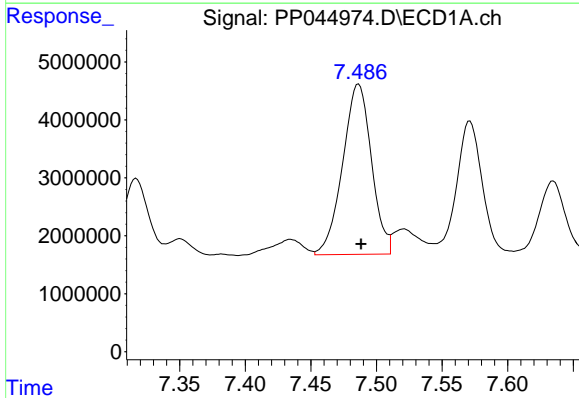
R.T.: 7.027 min
 Delta R.T.: 0.000 min
 Response: 5990892
 Conc: 82.37 ng/ml

Instrument :
 ECD_P
 ClientSampleId :



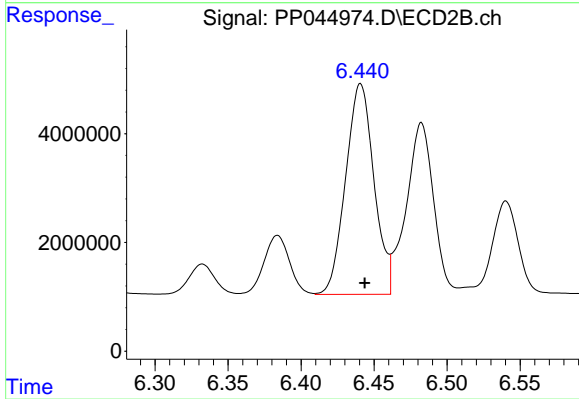
#29 AR-1254-4

R.T.: 5.990 min
 Delta R.T.: -0.002 min
 Response: 4667958
 Conc: 62.61 ng/ml



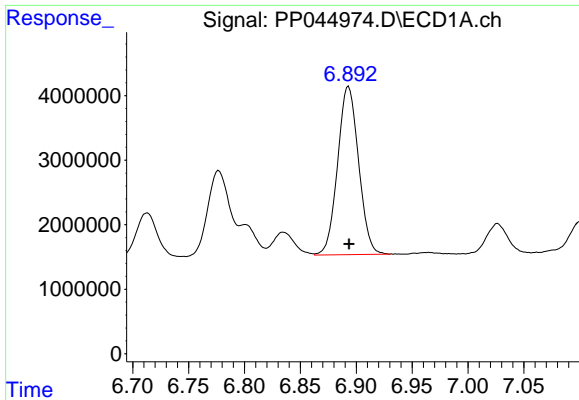
#30 AR-1254-5

R.T.: 7.486 min
 Delta R.T.: -0.002 min
 Response: 44935811
 Conc: 580.99 ng/ml



#30 AR-1254-5

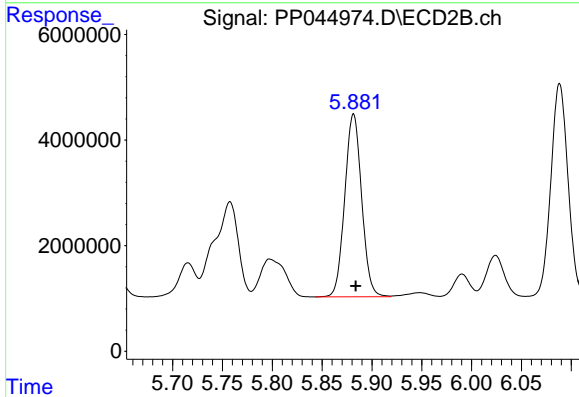
R.T.: 6.441 min
 Delta R.T.: -0.003 min
 Response: 52403806
 Conc: 508.91 ng/ml



#31 AR-1260-1

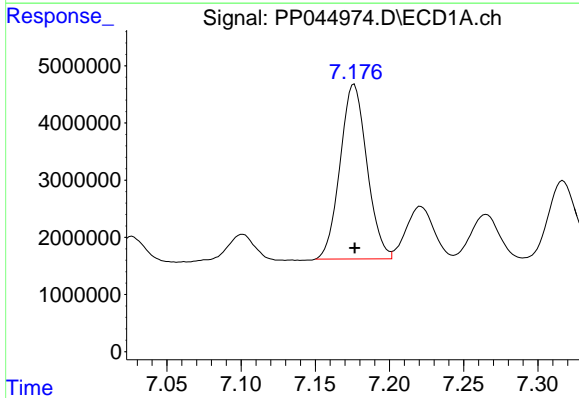
R.T.: 6.893 min
 Delta R.T.: 0.000 min
 Response: 34133437
 Conc: 495.80 ng/ml

Instrument :
 ECD_P
 ClientSampleId :



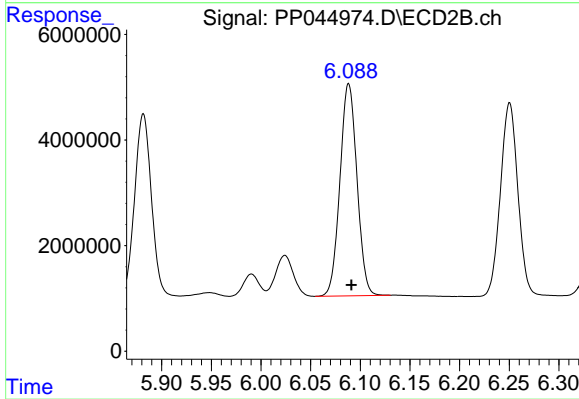
#31 AR-1260-1

R.T.: 5.882 min
 Delta R.T.: -0.002 min
 Response: 40857082
 Conc: 580.27 ng/ml



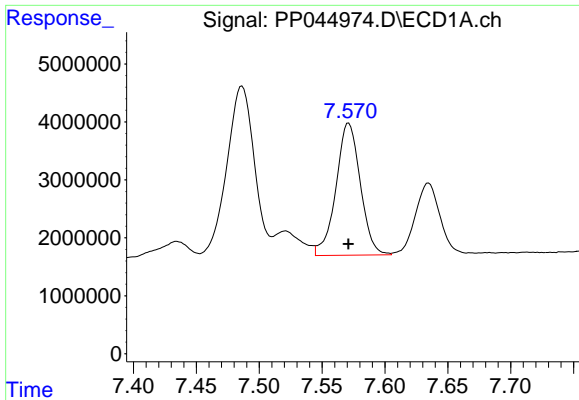
#32 AR-1260-2

R.T.: 7.176 min
 Delta R.T.: 0.000 min
 Response: 38476392
 Conc: 495.58 ng/ml



#32 AR-1260-2

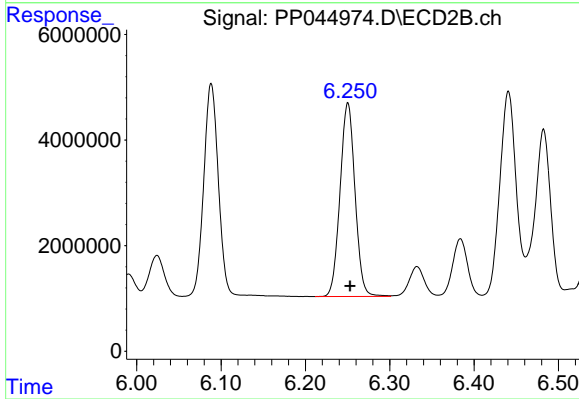
R.T.: 6.088 min
 Delta R.T.: -0.003 min
 Response: 47926142
 Conc: 535.91 ng/ml



#33 AR-1260-3

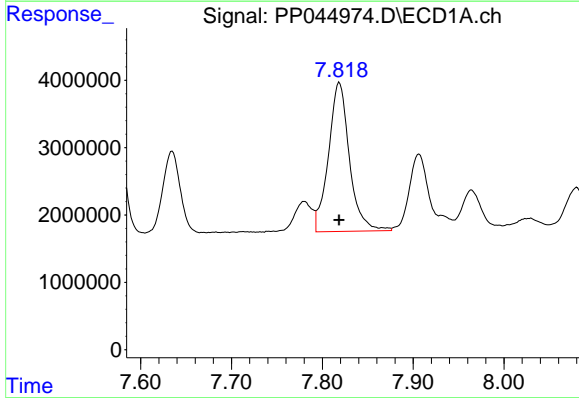
R.T.: 7.571 min
Delta R.T.: 0.000 min
Response: 30785692
Conc: 489.23 ng/ml

Instrument :
ECD_P
ClientSampleId :



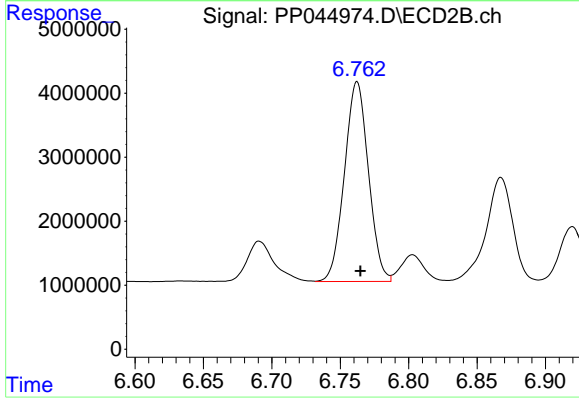
#33 AR-1260-3

R.T.: 6.250 min
Delta R.T.: -0.002 min
Response: 45217147
Conc: 530.91 ng/ml



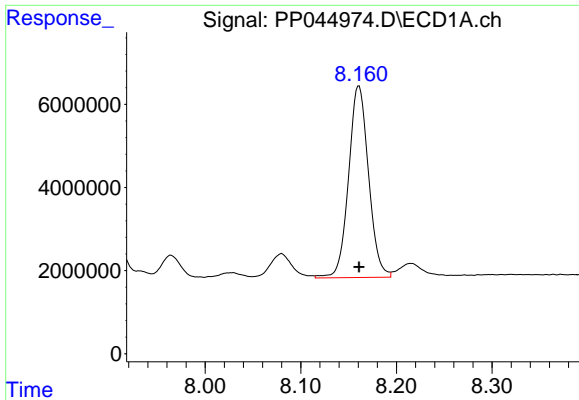
#34 AR-1260-4

R.T.: 7.819 min
Delta R.T.: 0.000 min
Response: 35471385
Conc: 483.55 ng/ml



#34 AR-1260-4

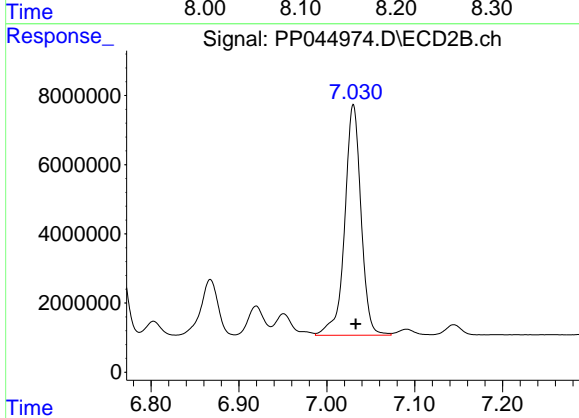
R.T.: 6.762 min
Delta R.T.: -0.003 min
Response: 38072538
Conc: 566.50 ng/ml



#35 AR-1260-5

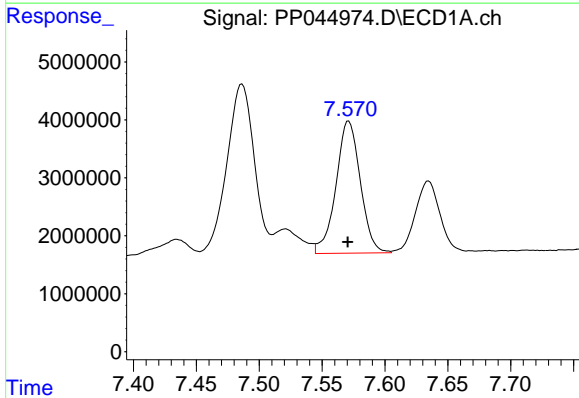
R.T.: 8.161 min
 Delta R.T.: 0.000 min
 Response: 66981900
 Conc: 478.33 ng/ml

Instrument :
 ECD_P
 ClientSampleId :



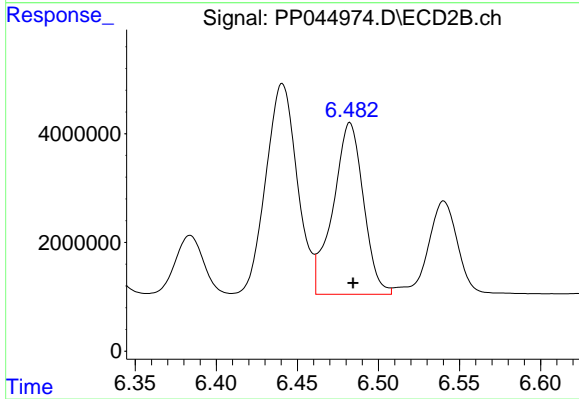
#35 AR-1260-5

R.T.: 7.030 min
 Delta R.T.: -0.003 min
 Response: 85923304
 Conc: 549.89 ng/ml



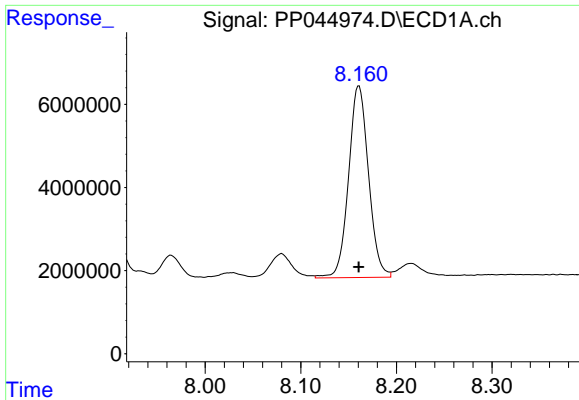
#36 AR-1262-1

R.T.: 7.571 min
 Delta R.T.: 0.000 min
 Response: 30785692
 Conc: 324.71 ng/ml



#36 AR-1262-1

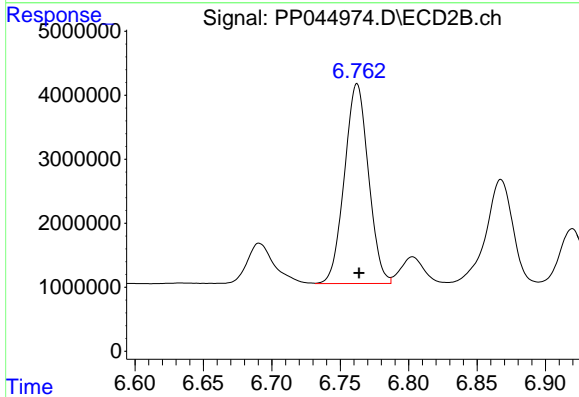
R.T.: 6.482 min
 Delta R.T.: -0.002 min
 Response: 41222914
 Conc: 400.40 ng/ml



#37 AR-1262-2

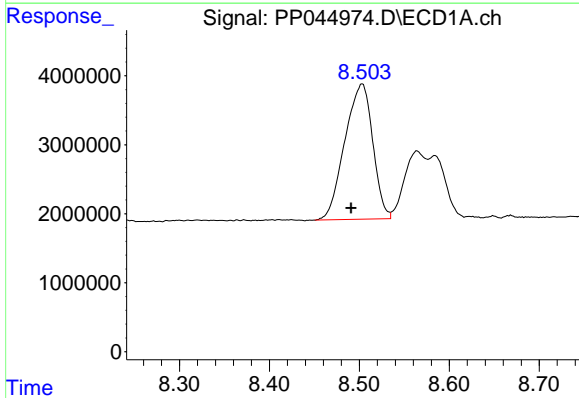
R.T.: 8.161 min
 Delta R.T.: 0.000 min
 Response: 66981900
 Conc: 416.23 ng/ml

Instrument :
 ECD_P
 ClientSampleId :



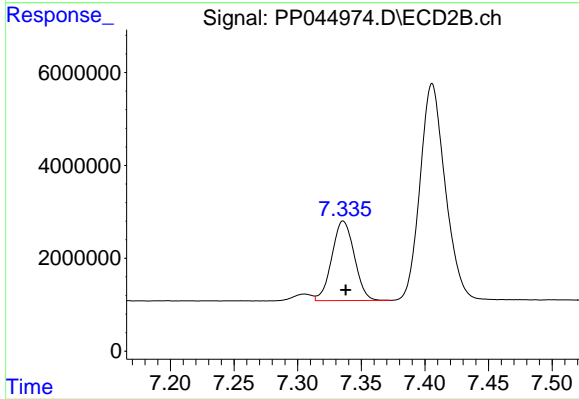
#37 AR-1262-2

R.T.: 6.762 min
 Delta R.T.: -0.001 min
 Response: 38072538
 Conc: 412.48 ng/ml



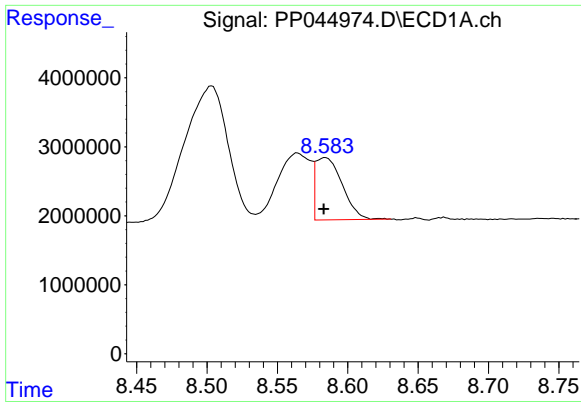
#38 AR-1262-3

R.T.: 8.503 min
 Delta R.T.: 0.013 min
 Response: 42376506
 Conc: 392.85 ng/ml



#38 AR-1262-3

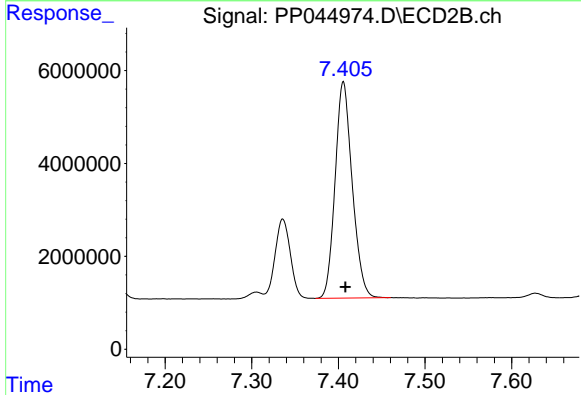
R.T.: 7.336 min
 Delta R.T.: -0.002 min
 Response: 21036038
 Conc: 289.06 ng/ml



#39 AR-1262-4

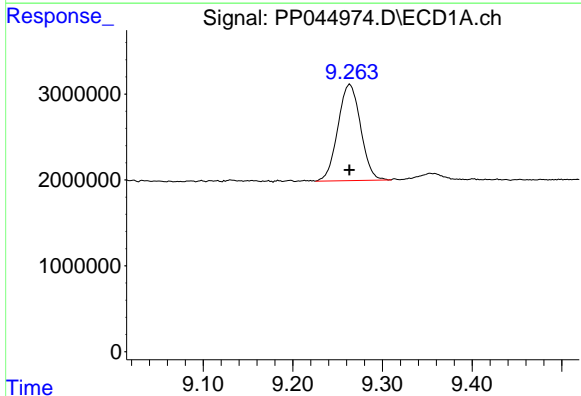
R.T.: 8.584 min
 Delta R.T.: 0.001 min
 Response: 11905980
 Conc: 232.78 ng/ml

Instrument :
 ECD_P
 ClientSampleId :



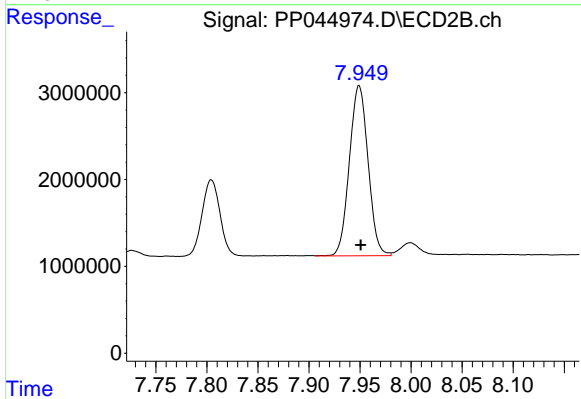
#39 AR-1262-4

R.T.: 7.406 min
 Delta R.T.: -0.002 min
 Response: 64011283
 Conc: 476.25 ng/ml



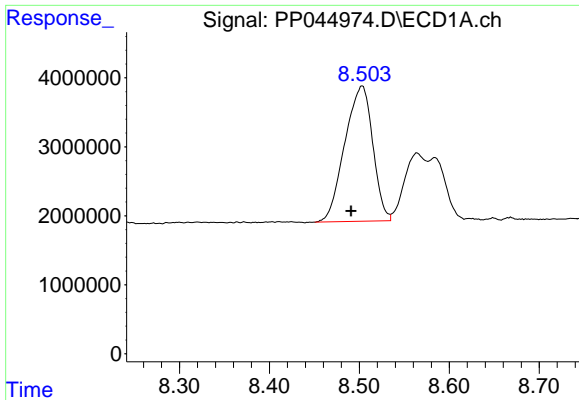
#40 AR-1262-5

R.T.: 9.264 min
 Delta R.T.: 0.000 min
 Response: 19667871
 Conc: 351.85 ng/ml



#40 AR-1262-5

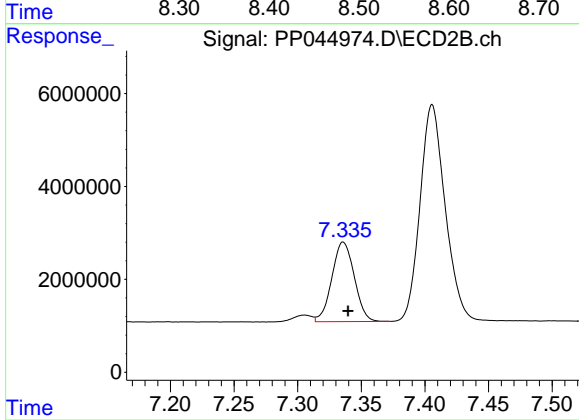
R.T.: 7.949 min
 Delta R.T.: -0.002 min
 Response: 24971168
 Conc: 379.29 ng/ml



#41 AR-1268-1

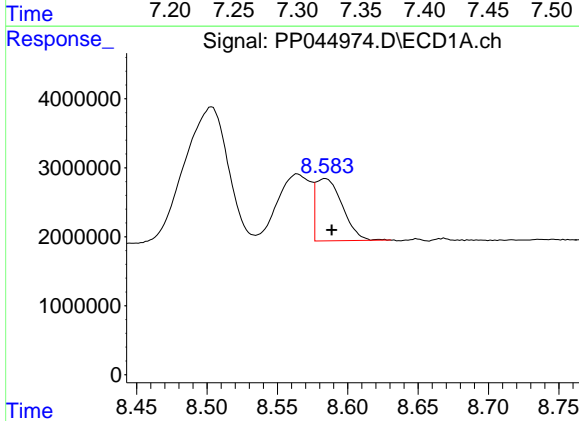
R.T.: 8.503 min
 Delta R.T.: 0.013 min
 Response: 42376506
 Conc: 220.14 ng/ml

Instrument :
 ECD_P
 ClientSampleId :



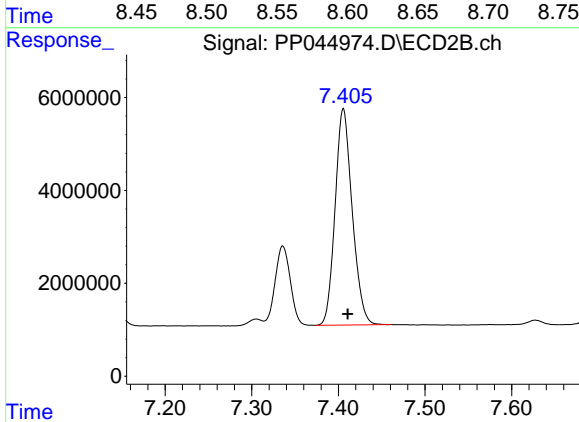
#41 AR-1268-1

R.T.: 7.336 min
 Delta R.T.: -0.004 min
 Response: 21036038
 Conc: 97.48 ng/ml



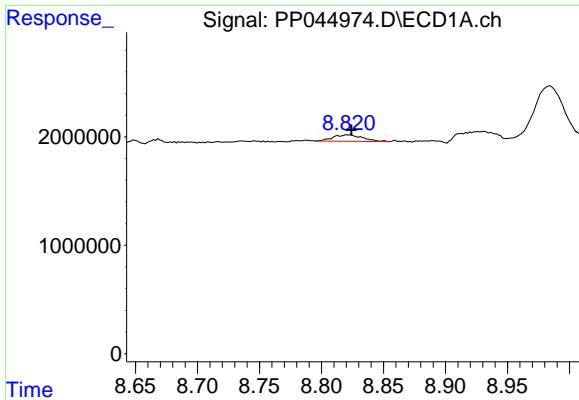
#42 AR-1268-2

R.T.: 8.584 min
 Delta R.T.: -0.004 min
 Response: 11905980
 Conc: 68.20 ng/ml



#42 AR-1268-2

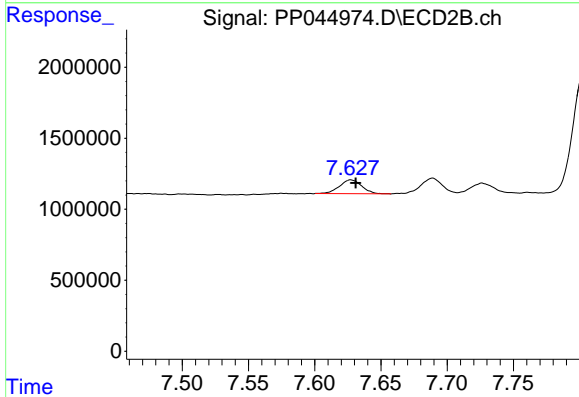
R.T.: 7.406 min
 Delta R.T.: -0.005 min
 Response: 64011283
 Conc: 327.34 ng/ml



#43 AR-1268-3

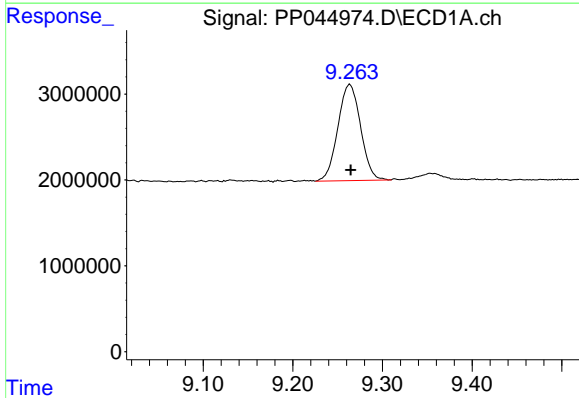
R.T.: 8.822 min
 Delta R.T.: -0.002 min
 Response: 957741
 Conc: 6.27 ng/ml

Instrument :
 ECD_P
 ClientSampleId :



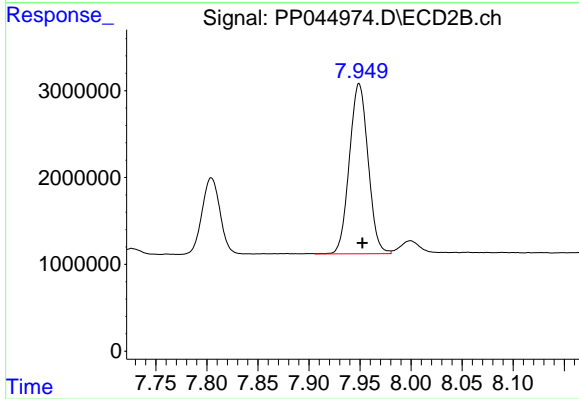
#43 AR-1268-3

R.T.: 7.627 min
 Delta R.T.: -0.004 min
 Response: 1143637
 Conc: 6.94 ng/ml



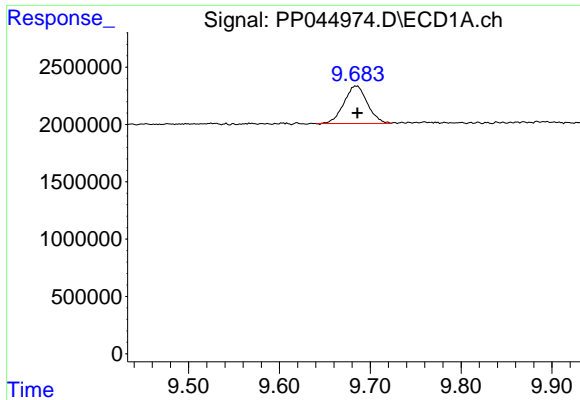
#44 AR-1268-4

R.T.: 9.264 min
 Delta R.T.: 0.000 min
 Response: 19667871
 Conc: 314.23 ng/ml



#44 AR-1268-4

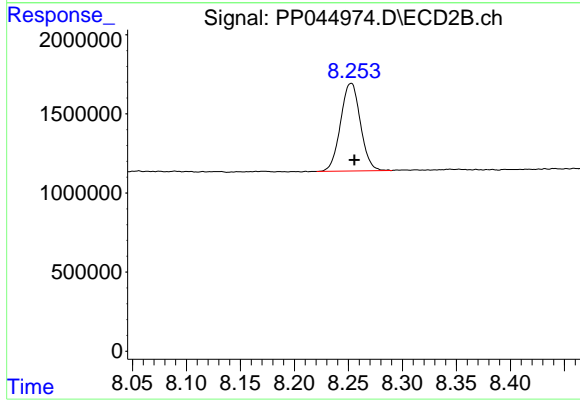
R.T.: 7.949 min
 Delta R.T.: -0.003 min
 Response: 24971168
 Conc: 326.04 ng/ml



#45 AR-1268-5

R.T.: 9.685 min
Delta R.T.: -0.001 min
Response: 5873678
Conc: 12.19 ng/ml

Instrument :
ECD_P
ClientSampleId :



#45 AR-1268-5

R.T.: 8.253 min
Delta R.T.: -0.003 min
Response: 7096756
Conc: 13.77 ng/ml