

Data Path : Z:\pestpcbsrv\HPCHEM1\ECD_P\Data\PP032222\
 Data File : PP044975.D
 Signal(s) : Signal #1: ECD1A.ch Signal #2: ECD2B.ch
 Acq On : 22 Mar 2022 13:07
 Operator : YP\AJ
 Sample : AR1242CCC500
 Misc :
 ALS Vial : 4 Sample Multiplier: 1

Instrument :
 ECD_P
 ClientSampleId :

Integration File signal 1: autoint1.e
 Integration File signal 2: autoint2.e
 Quant Time: Mar 23 04:54:35 2022
 Quant Method : Z:\pestpcbsrv\HPCHEM1\ECD_P\methods\PP031722.M
 Quant Title : GC EXTRACTABLES
 QLast Update : Thu Mar 17 04:32:40 2022
 Response via : Initial Calibration
 Integrator: ChemStation

Volume Inj. : 2 µl
 Signal #1 Phase : ZB-MR1 Signal #2 Phase: ZB-MR2
 Signal #1 Info : 30Mx0.32mmx 0.50µ Signal #2 Info : 30M x 0.32mm x 0.25µm

Compound	RT#1	RT#2	Resp#1	Resp#2	ng/ml	ng/ml
System Monitoring Compounds						
1) SA Tetrachlo...	3.903	3.157	100.1E6	78083056	54.959	59.251
2) SA Decachlor...	10.027	8.514	67049129	71873865	52.086	55.314
Target Compounds						
3) L1 AR-1016-1	5.154	4.299	24026752	23175568	409.456	457.515
4) L1 AR-1016-2	5.177	4.317	35037175	32129167	391.933	445.692
5) L1 AR-1016-3	5.243	4.502	21233548	18143409	407.999	461.136
6) L1 AR-1016-4	5.349	4.551	17408155	14157208	406.828	449.671
7) L1 AR-1016-5	5.669	4.775	18165541	19278004	413.934	482.974
8) L2 AR-1221-1	4.166f	3.381	146111	2667471	7.119	179.710 #
9) L2 AR-1221-2	4.250	3.472	83493	3941516	5.461	318.150 #
10) L2 AR-1221-3	4.301f	3.551	14316980	13478341	296.508	347.235
11) L3 AR-1232-1	4.301	3.551	14316980	13478341	318.175	375.007
12) L3 AR-1232-2	4.865	4.317	18308535	32129167	871.288	929.061
13) L3 AR-1232-3	5.177	4.502	35037175	18143409	839.851	968.711
14) L3 AR-1232-4	5.349	4.594	17408155	17958314	870.444	1084.804
15) L3 AR-1232-5	5.451	4.775	13580411	19278004	961.052	1042.611
16) L4 AR-1242-1	5.154	4.299	24026752	23175568	523.616	580.157
17) L4 AR-1242-2	5.177	4.317	35037175	32129167	500.324	566.056
18) L4 AR-1242-3	5.243	4.502	21233548	18143409	516.989	581.832
19) L4 AR-1242-4	5.349	4.594	17408155	17958314	506.109	592.686
20) L4 AR-1242-5	6.149	5.151	18204596	22933211	497.827	576.498
21) L5 AR-1248-1	5.154	4.299	24026752	23175568	683.137	733.848
22) L5 AR-1248-2	5.451	4.551	13580411	14157208	287.084	323.717
23) L5 AR-1248-3	5.669	4.594	18165541	17958314	307.441	393.009 #
24) L5 AR-1248-4	6.108	4.775	17079053	19278004	269.130	356.856 #
25) L5 AR-1248-5	6.149	5.195	18204596	19518715	291.764	347.660
26) L6 AR-1254-1	6.077	5.151	13324179	22933211	200.667	265.197 #
27) L6 AR-1254-2	6.320	5.311	15068664	6042335	150.820	81.199 #
28) L6 AR-1254-3	6.718	5.742	6268217	7384055	61.285	64.265
29) L6 AR-1254-4	7.031	5.992	4437874	5836797	61.015	78.288 #
30) L6 AR-1254-5	7.492	6.443	2391182	1672254	30.916	16.240 #
31) L7 AR-1260-1	6.900	5.872	349617	1798055	5.078	25.537 #
32) L7 AR-1260-2	7.173	6.088	166456	845729	2.144	9.457 #
33) L7 AR-1260-3	7.577	6.249	281937	1636422	4.480	19.214 #
34) L7 AR-1260-4	7.816	6.760	1394005	49370	19.003	0.735 #
35) L7 AR-1260-5	8.159	7.030	1262599	145009	9.016	0.928 #
36) L8 AR-1262-1	7.577	6.467f	281937	272881	2.974	2.651
37) L8 AR-1262-2	8.159	6.760	1262599	49370	7.846	0.535 #
38) L8 AR-1262-3	8.504	7.353f	455744	65833	4.225	0.905 #
39) L8 AR-1262-4	8.585	7.411	96337	205532	1.884	1.529
40) L8 AR-1262-5	9.269	7.953	122370	201557	2.189	3.061 #
41) L9 AR-1268-1	8.504	7.353	455744	65833	2.367	0.305 #

Data Path : Z:\pestpcbsrv\HPCHEM1\ECD_P\Data\PP032222\
 Data File : PP044975.D
 Signal(s) : Signal #1: ECD1A.ch Signal #2: ECD2B.ch
 Acq On : 22 Mar 2022 13:07
 Operator : YP\AJ
 Sample : AR1242CCC500
 Misc :
 ALS Vial : 4 Sample Multiplier: 1

Instrument :
 ECD_P
 ClientSampleId :

Integration File signal 1: autoint1.e
 Integration File signal 2: autoint2.e
 Quant Time: Mar 23 04:54:35 2022
 Quant Method : Z:\pestpcbsrv\HPCHEM1\ECD_P\methods\PP031722.M
 Quant Title : GC EXTRACTABLES
 QLast Update : Thu Mar 17 04:32:40 2022
 Response via : Initial Calibration
 Integrator: ChemStation

Volume Inj. : 2 µl
 Signal #1 Phase : ZB-MR1 Signal #2 Phase: ZB-MR2
 Signal #1 Info : 30Mx0.32mmx 0.50µ Signal #2 Info : 30M x 0.32mm x 0.25µm

	Compound	RT#1	RT#2	Resp#1	Resp#2	ng/ml	ng/ml
42)	L9 AR-1268-2	8.585	7.411	96337	205532	0.552	1.051 #
43)	L9 AR-1268-3	8.827	7.627	127590	147266	0.835	0.894
44)	L9 AR-1268-4	9.269	7.953	122370	201557	1.955	2.632 #
45)	L9 AR-1268-5	9.684	8.254	171852	448048	0.357	0.869 #

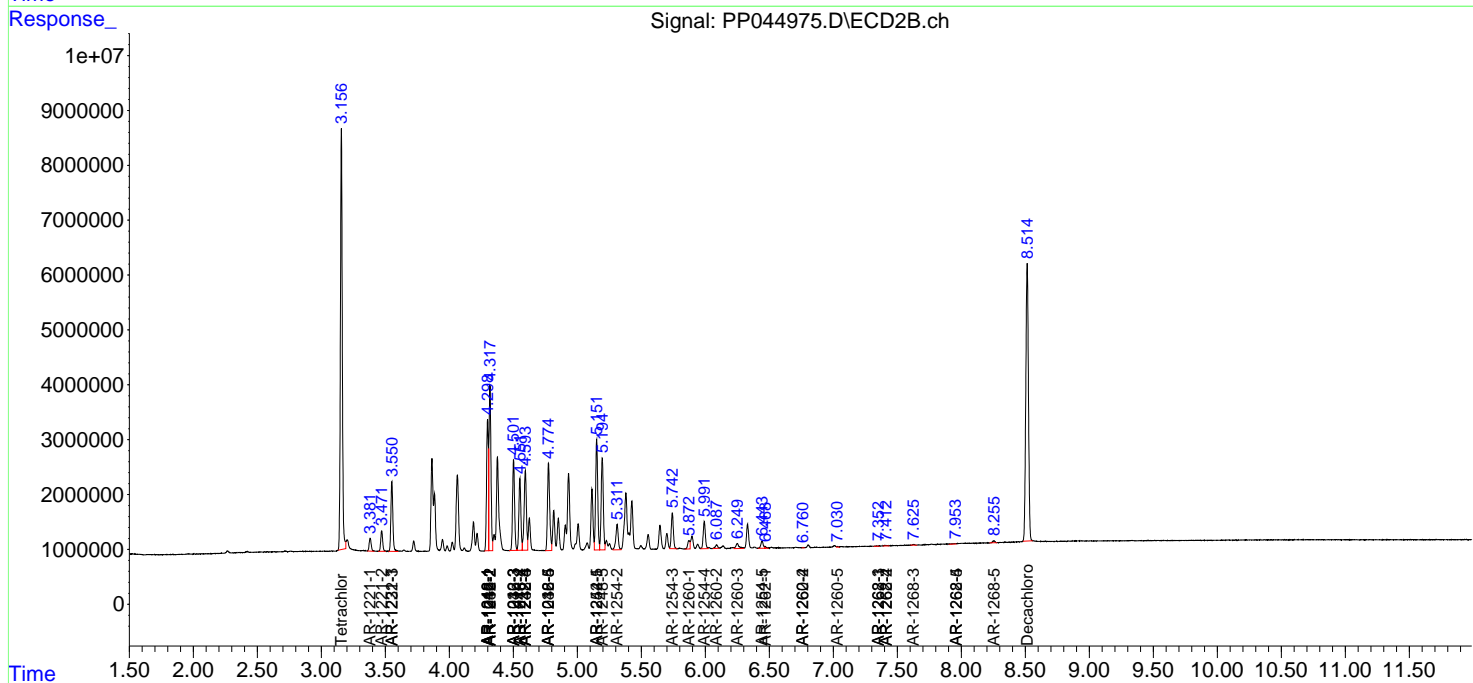
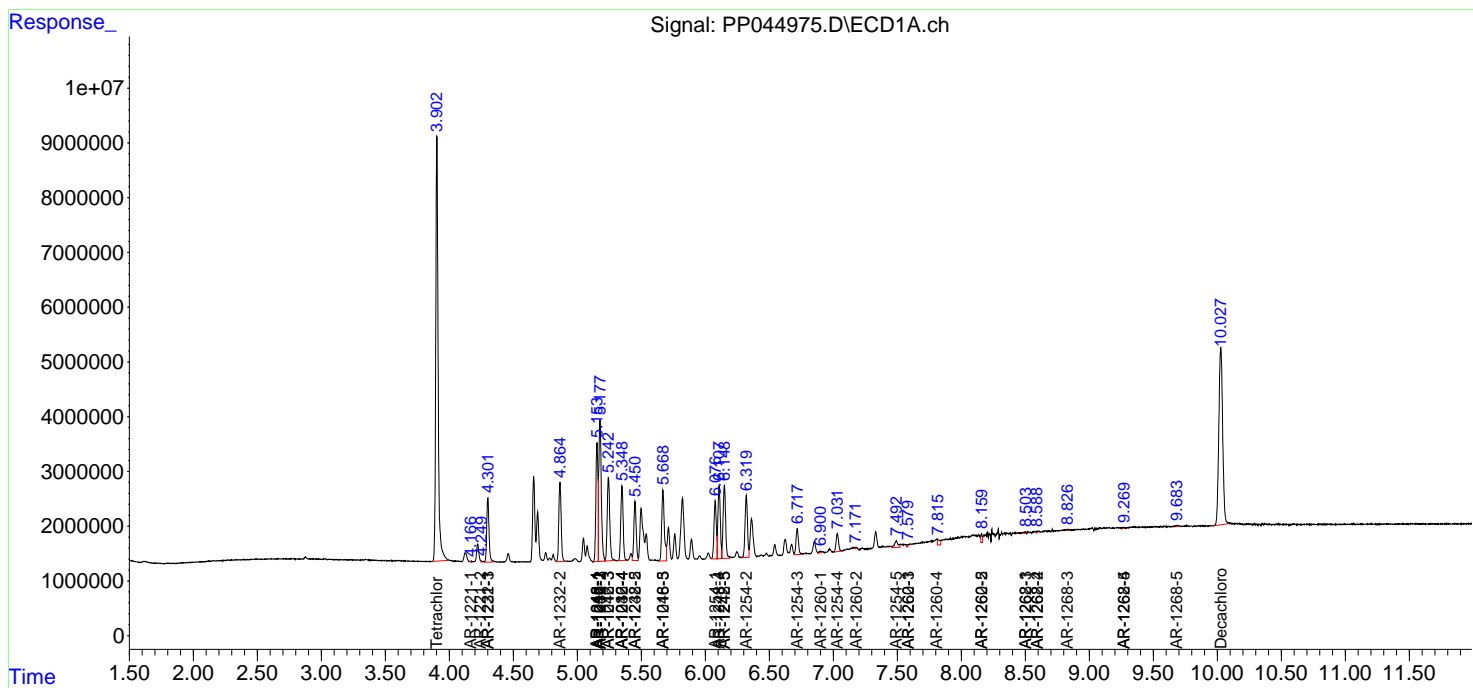
(f)=RT Delta > 1/2 Window (#)=Amounts differ by > 25% (m)=manual int.

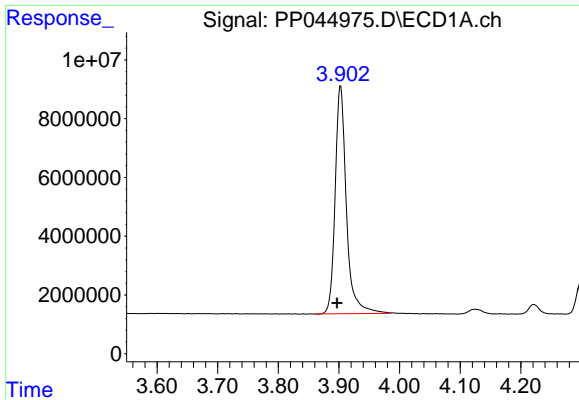
Data Path : Z:\pestpcbsrv\HPCHEM1\ECD_P\Data\PP032222\
 Data File : PP044975.D
 Signal(s) : Signal #1: ECD1A.ch Signal #2: ECD2B.ch
 Acq On : 22 Mar 2022 13:07
 Operator : YP\AJ
 Sample : AR1242CCC500
 Misc :
 ALS Vial : 4 Sample Multiplier: 1

Instrument :
 ECD_P
 ClientSampleId :

Integration File signal 1: autoint1.e
 Integration File signal 2: autoint2.e
 Quant Time: Mar 23 04:54:35 2022
 Quant Method : Z:\pestpcbsrv\HPCHEM1\ECD_P\methods\PP031722.M
 Quant Title : GC EXTRACTABLES
 QLast Update : Thu Mar 17 04:32:40 2022
 Response via : Initial Calibration
 Integrator: ChemStation

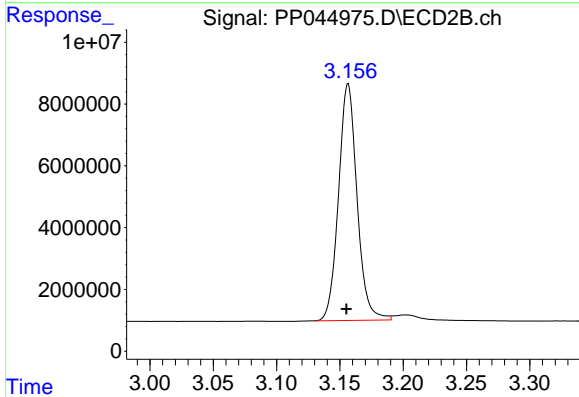
Volume Inj. : 2 µl
 Signal #1 Phase : ZB-MR1 Signal #2 Phase: ZB-MR2
 Signal #1 Info : 30Mx0.32mmx 0.50µ Signal #2 Info : 30M x 0.32mm x 0.25µm



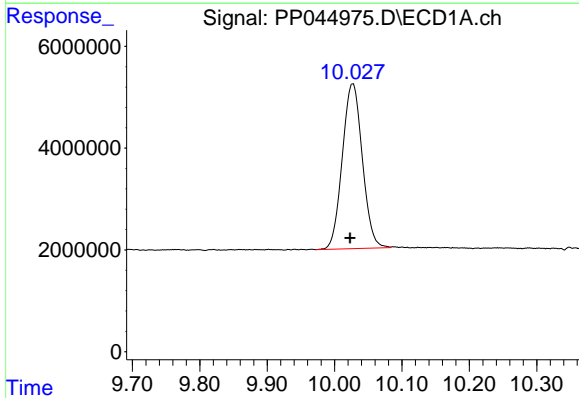


#1 Tetrachloro-m-xylene
 R.T.: 3.903 min
 Delta R.T.: 0.006 min
 Response: 100138434
 Conc: 54.96 ng/ml

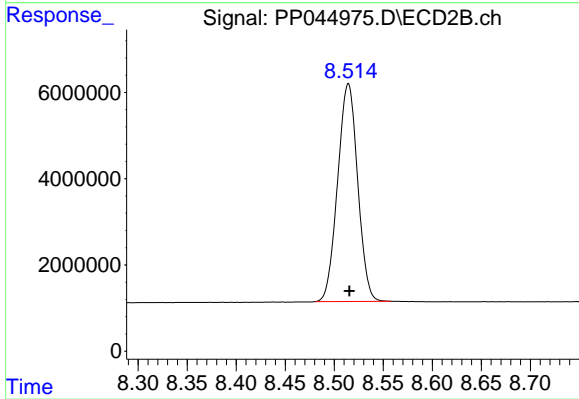
Instrument :
 ECD_P
 ClientSampleId :



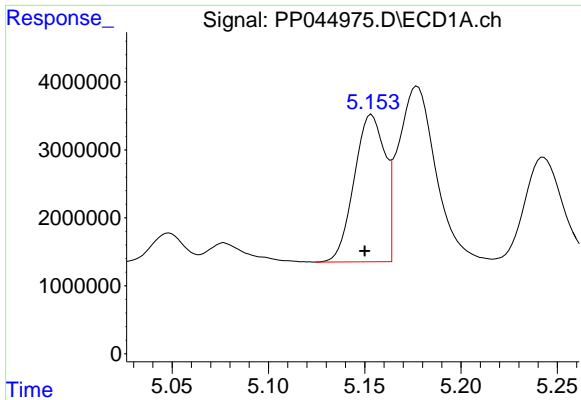
#1 Tetrachloro-m-xylene
 R.T.: 3.157 min
 Delta R.T.: 0.001 min
 Response: 78083056
 Conc: 59.25 ng/ml



#2 Decachlorobiphenyl
 R.T.: 10.027 min
 Delta R.T.: 0.004 min
 Response: 67049129
 Conc: 52.09 ng/ml



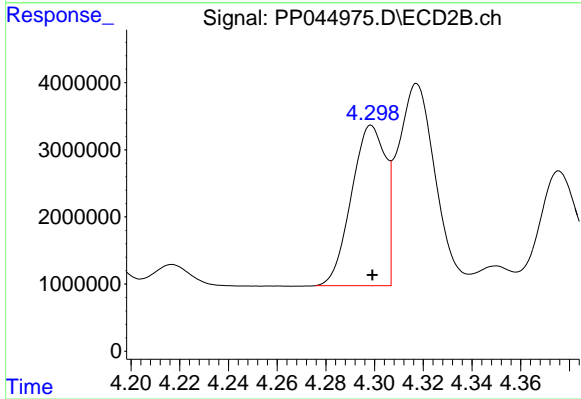
#2 Decachlorobiphenyl
 R.T.: 8.514 min
 Delta R.T.: 0.000 min
 Response: 71873865
 Conc: 55.31 ng/ml



#3 AR-1016-1

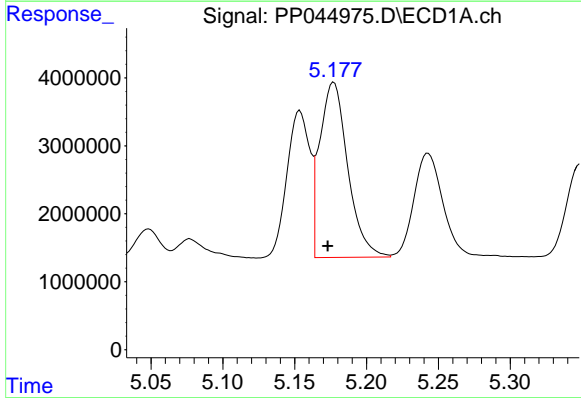
R.T.: 5.154 min
 Delta R.T.: 0.003 min
 Response: 24026752
 Conc: 409.46 ng/ml

Instrument :
 ECD_P
 ClientSampleId :



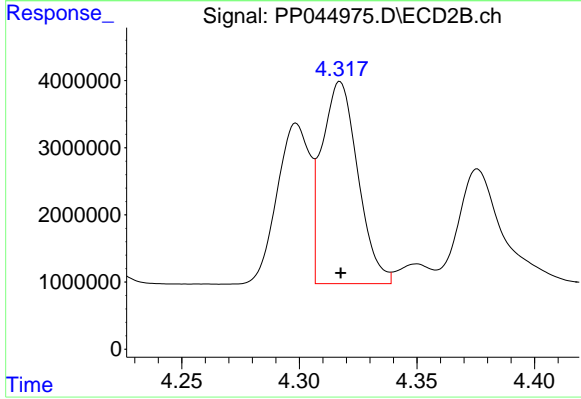
#3 AR-1016-1

R.T.: 4.299 min
 Delta R.T.: 0.000 min
 Response: 23175568
 Conc: 457.52 ng/ml



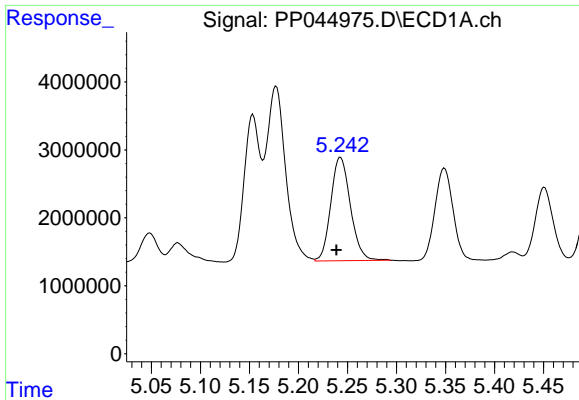
#4 AR-1016-2

R.T.: 5.177 min
 Delta R.T.: 0.004 min
 Response: 35037175
 Conc: 391.93 ng/ml



#4 AR-1016-2

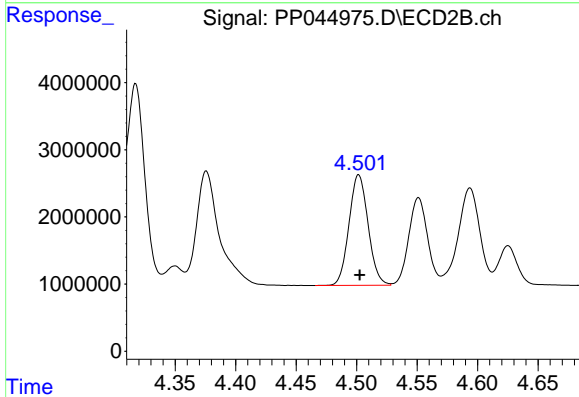
R.T.: 4.317 min
 Delta R.T.: 0.000 min
 Response: 32129167
 Conc: 445.69 ng/ml



#5 AR-1016-3

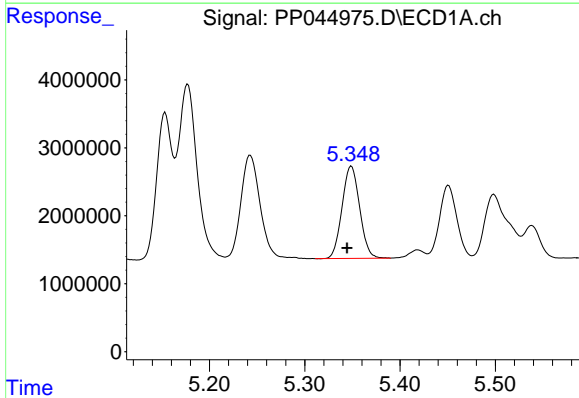
R.T.: 5.243 min
 Delta R.T.: 0.004 min
 Response: 21233548
 Conc: 408.00 ng/ml

Instrument :
 ECD_P
 ClientSampleId :



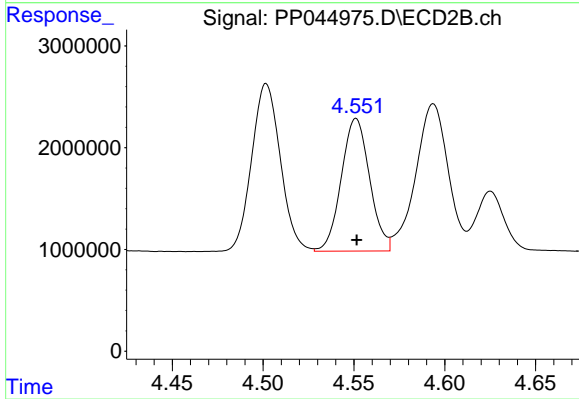
#5 AR-1016-3

R.T.: 4.502 min
 Delta R.T.: 0.000 min
 Response: 18143409
 Conc: 461.14 ng/ml



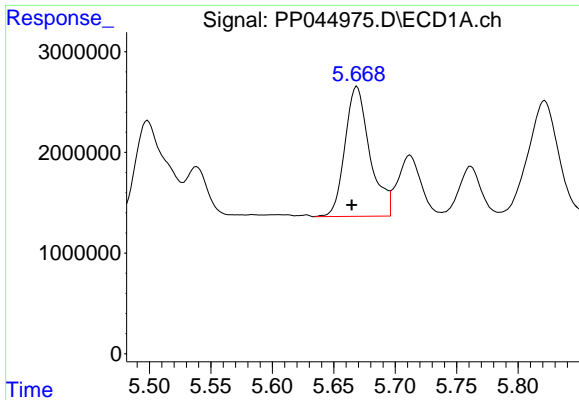
#6 AR-1016-4

R.T.: 5.349 min
 Delta R.T.: 0.005 min
 Response: 17408155
 Conc: 406.83 ng/ml



#6 AR-1016-4

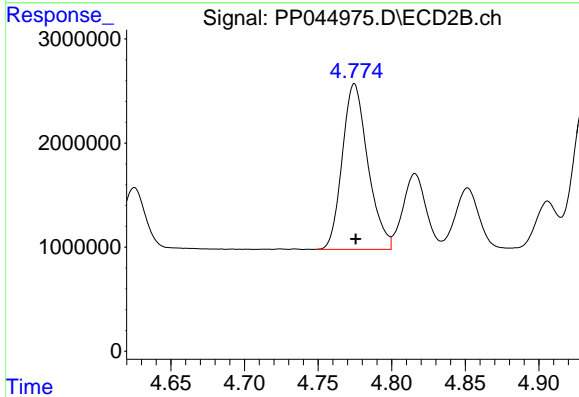
R.T.: 4.551 min
 Delta R.T.: 0.000 min
 Response: 14157208
 Conc: 449.67 ng/ml



#7 AR-1016-5

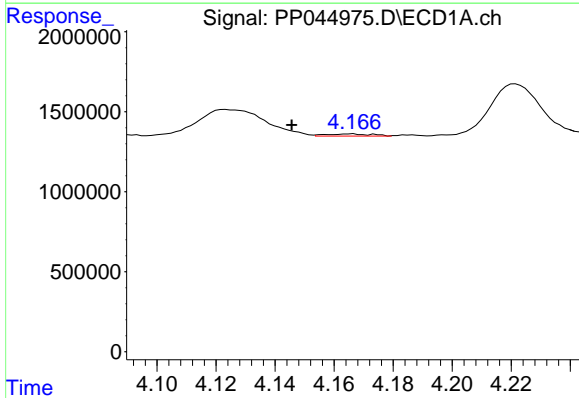
R.T.: 5.669 min
 Delta R.T.: 0.004 min
 Response: 18165541
 Conc: 413.93 ng/ml

Instrument :
 ECD_P
 ClientSampleId :



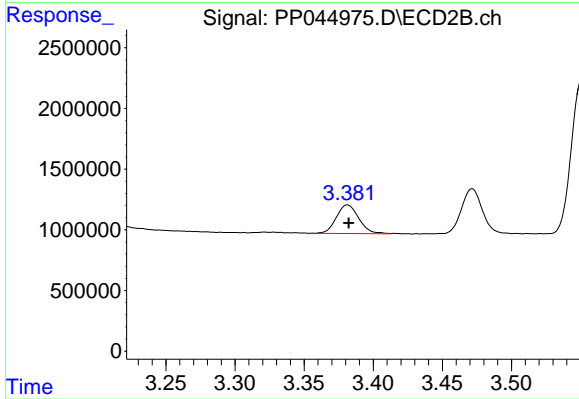
#7 AR-1016-5

R.T.: 4.775 min
 Delta R.T.: 0.000 min
 Response: 19278004
 Conc: 482.97 ng/ml



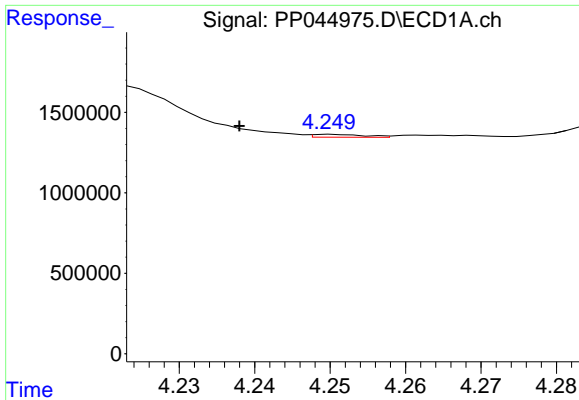
#8 AR-1221-1

R.T.: 4.166 min
 Delta R.T.: 0.021 min
 Response: 146111
 Conc: 7.12 ng/ml



#8 AR-1221-1

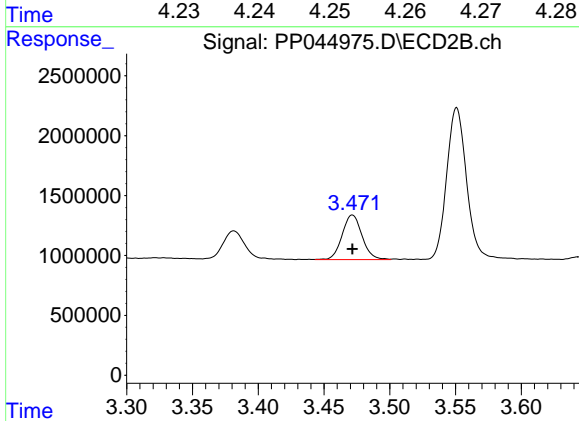
R.T.: 3.381 min
 Delta R.T.: 0.000 min
 Response: 2667471
 Conc: 179.71 ng/ml



#9 AR-1221-2

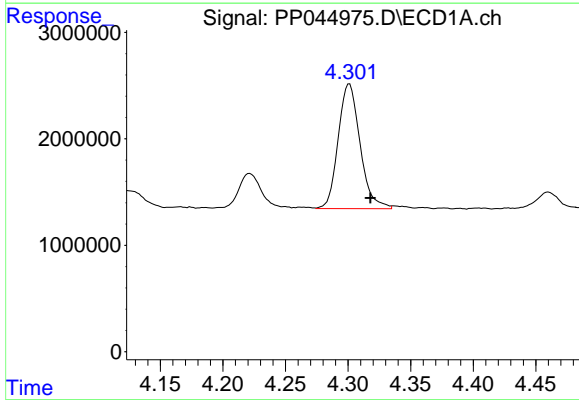
R.T.: 4.250 min
 Delta R.T.: 0.012 min
 Response: 83493
 Conc: 5.46 ng/ml

Instrument :
 ECD_P
 ClientSampleId :



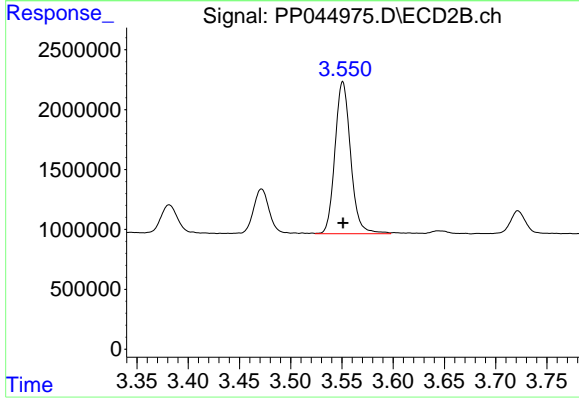
#9 AR-1221-2

R.T.: 3.472 min
 Delta R.T.: 0.000 min
 Response: 3941516
 Conc: 318.15 ng/ml



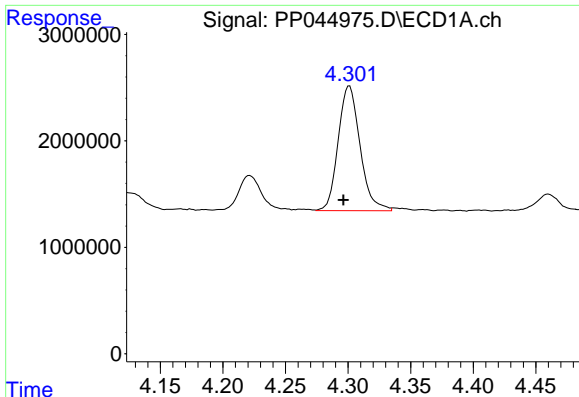
#10 AR-1221-3

R.T.: 4.301 min
 Delta R.T.: -0.017 min
 Response: 14316980
 Conc: 296.51 ng/ml



#10 AR-1221-3

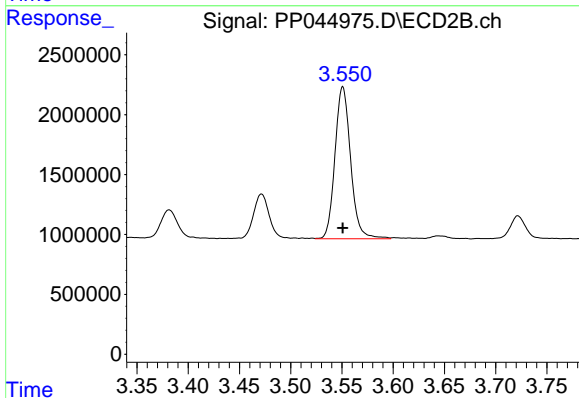
R.T.: 3.551 min
 Delta R.T.: 0.000 min
 Response: 13478341
 Conc: 347.24 ng/ml



#11 AR-1232-1

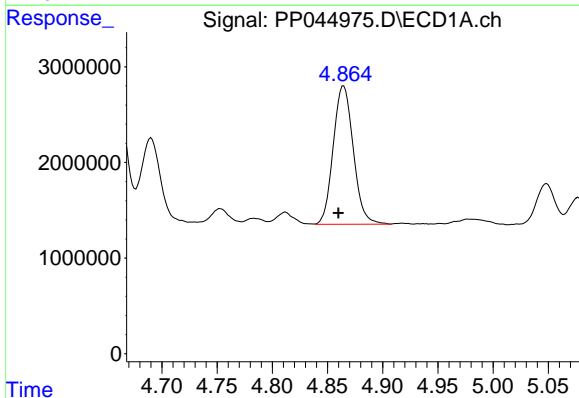
R.T.: 4.301 min
 Delta R.T.: 0.005 min
 Response: 14316980
 Conc: 318.18 ng/ml

Instrument :
 ECD_P
 ClientSampleId :



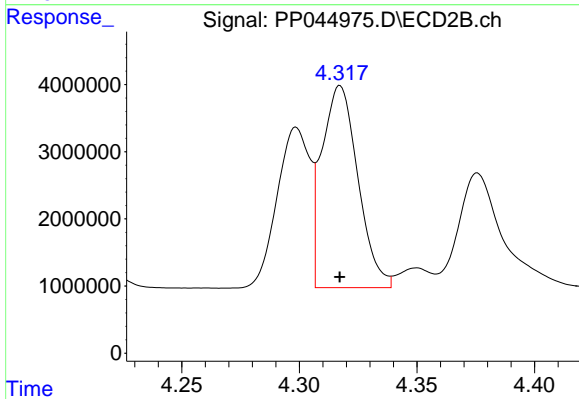
#11 AR-1232-1

R.T.: 3.551 min
 Delta R.T.: 0.000 min
 Response: 13478341
 Conc: 375.01 ng/ml



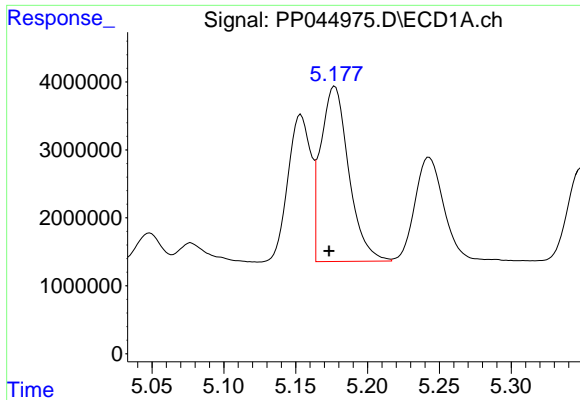
#12 AR-1232-2

R.T.: 4.865 min
 Delta R.T.: 0.005 min
 Response: 18308535
 Conc: 871.29 ng/ml



#12 AR-1232-2

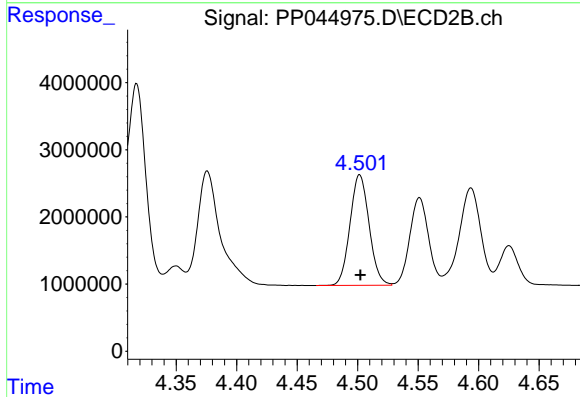
R.T.: 4.317 min
 Delta R.T.: 0.000 min
 Response: 32129167
 Conc: 929.06 ng/ml



#13 AR-1232-3

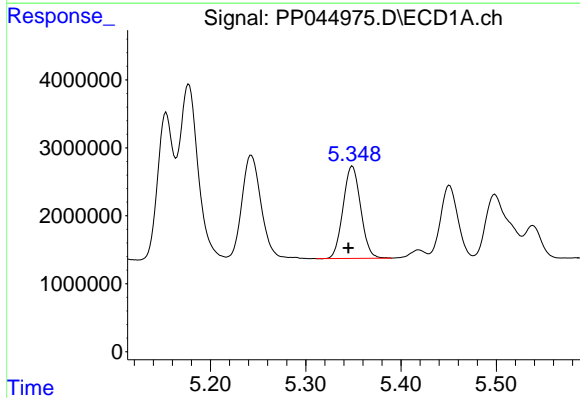
R.T.: 5.177 min
 Delta R.T.: 0.004 min
 Response: 35037175
 Conc: 839.85 ng/ml

Instrument :
 ECD_P
 ClientSampleId :



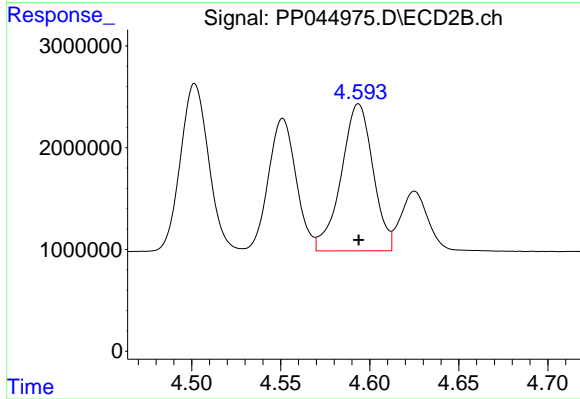
#13 AR-1232-3

R.T.: 4.502 min
 Delta R.T.: 0.000 min
 Response: 18143409
 Conc: 968.71 ng/ml



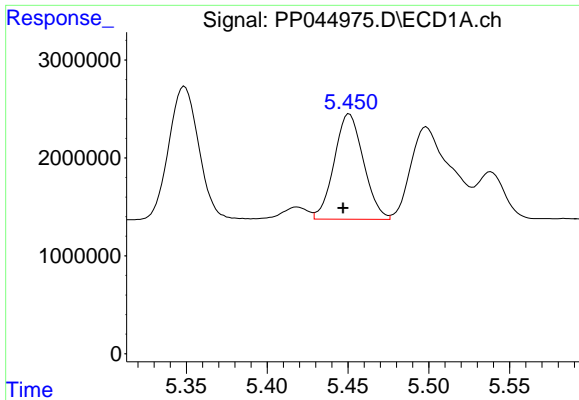
#14 AR-1232-4

R.T.: 5.349 min
 Delta R.T.: 0.004 min
 Response: 17408155
 Conc: 870.44 ng/ml



#14 AR-1232-4

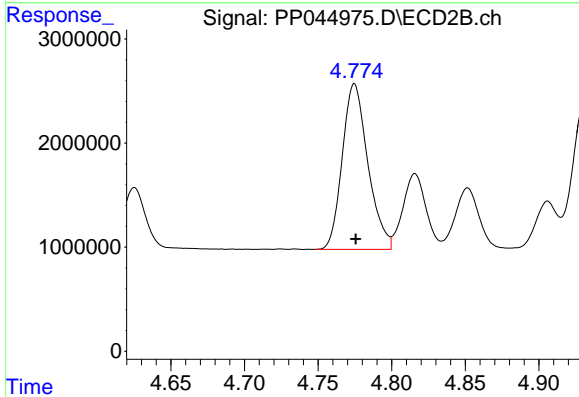
R.T.: 4.594 min
 Delta R.T.: 0.000 min
 Response: 17958314
 Conc: 1084.80 ng/ml



#15 AR-1232-5

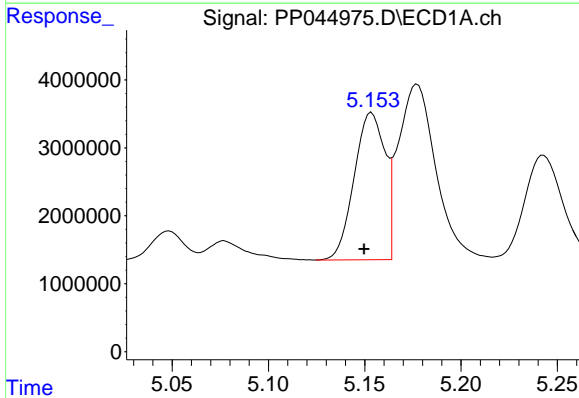
R.T.: 5.451 min
 Delta R.T.: 0.004 min
 Response: 13580411
 Conc: 961.05 ng/ml

Instrument :
 ECD_P
 ClientSampleId :



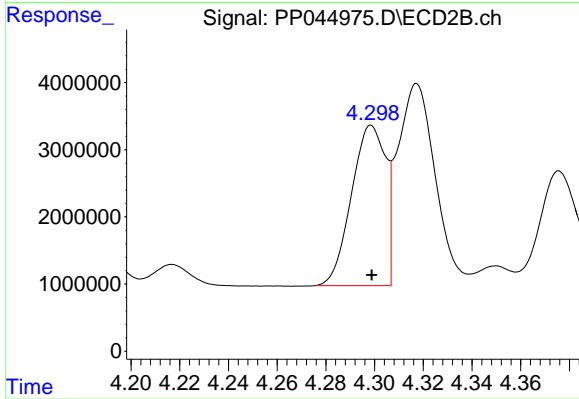
#15 AR-1232-5

R.T.: 4.775 min
 Delta R.T.: 0.000 min
 Response: 19278004
 Conc: 1042.61 ng/ml



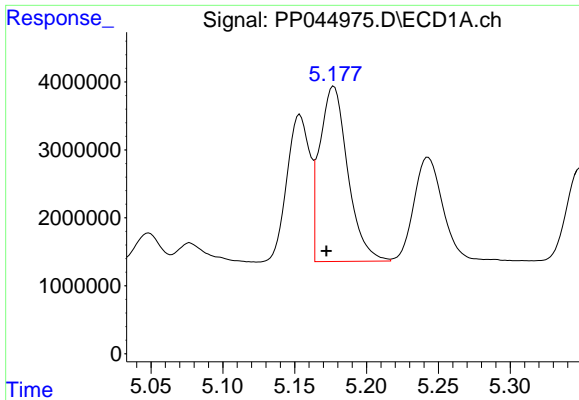
#16 AR-1242-1

R.T.: 5.154 min
 Delta R.T.: 0.004 min
 Response: 24026752
 Conc: 523.62 ng/ml



#16 AR-1242-1

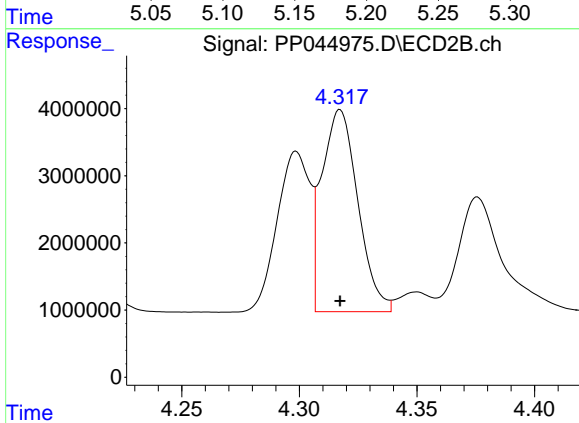
R.T.: 4.299 min
 Delta R.T.: 0.000 min
 Response: 23175568
 Conc: 580.16 ng/ml



#17 AR-1242-2

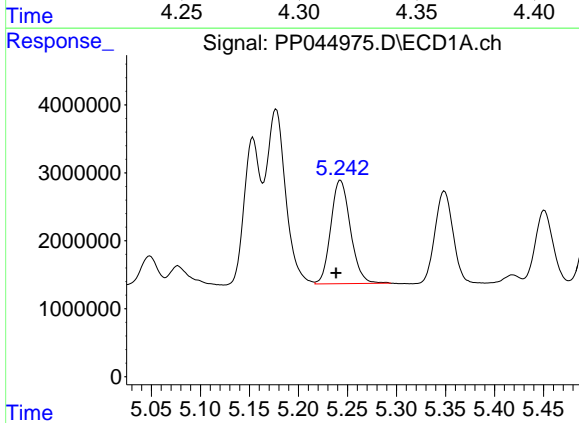
R.T.: 5.177 min
Delta R.T.: 0.005 min
Response: 35037175
Conc: 500.32 ng/ml

Instrument :
ECD_P
ClientSampleId :



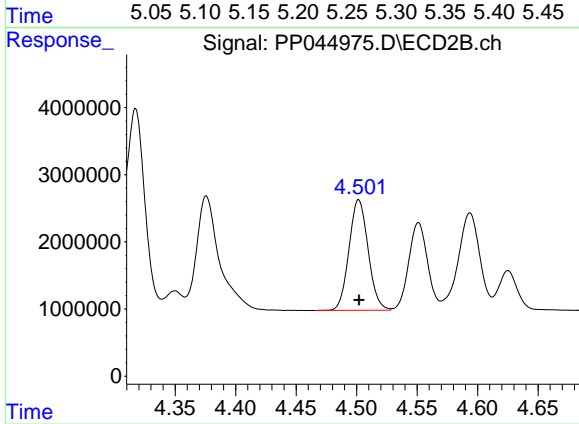
#17 AR-1242-2

R.T.: 4.317 min
Delta R.T.: 0.000 min
Response: 32129167
Conc: 566.06 ng/ml



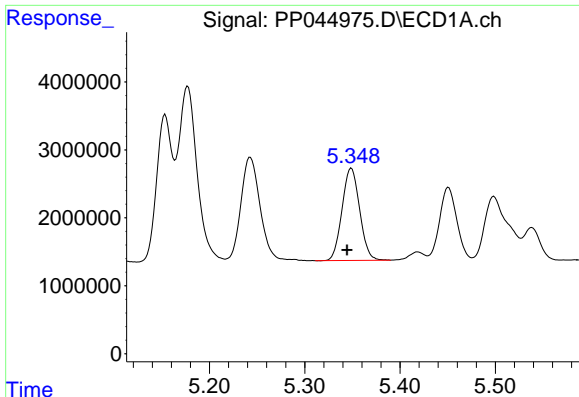
#18 AR-1242-3

R.T.: 5.243 min
Delta R.T.: 0.005 min
Response: 21233548
Conc: 516.99 ng/ml



#18 AR-1242-3

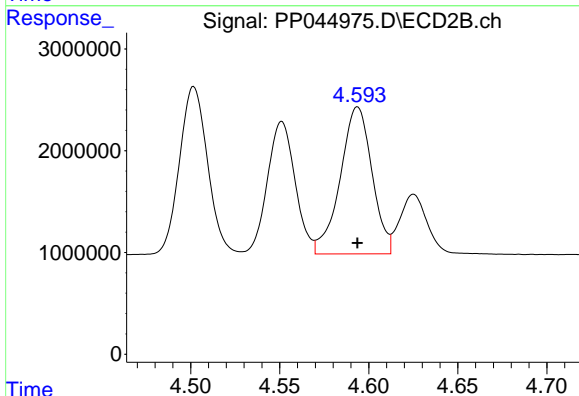
R.T.: 4.502 min
Delta R.T.: 0.000 min
Response: 18143409
Conc: 581.83 ng/ml



#19 AR-1242-4

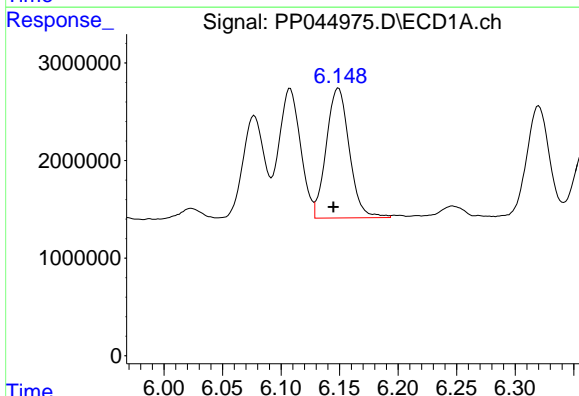
R.T.: 5.349 min
 Delta R.T.: 0.004 min
 Response: 17408155
 Conc: 506.11 ng/ml

Instrument :
 ECD_P
 ClientSampleId :



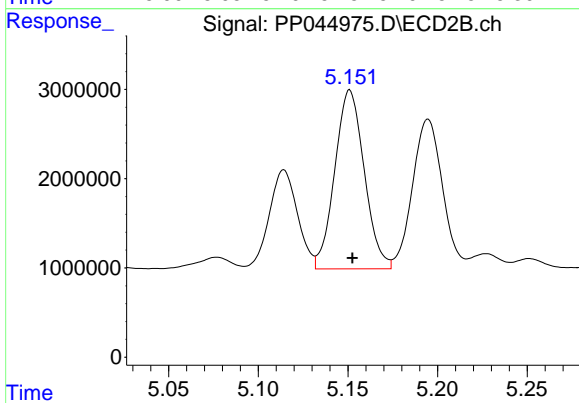
#19 AR-1242-4

R.T.: 4.594 min
 Delta R.T.: 0.000 min
 Response: 17958314
 Conc: 592.69 ng/ml



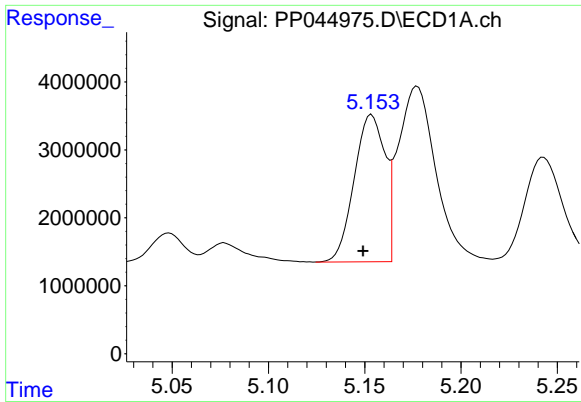
#20 AR-1242-5

R.T.: 6.149 min
 Delta R.T.: 0.004 min
 Response: 18204596
 Conc: 497.83 ng/ml



#20 AR-1242-5

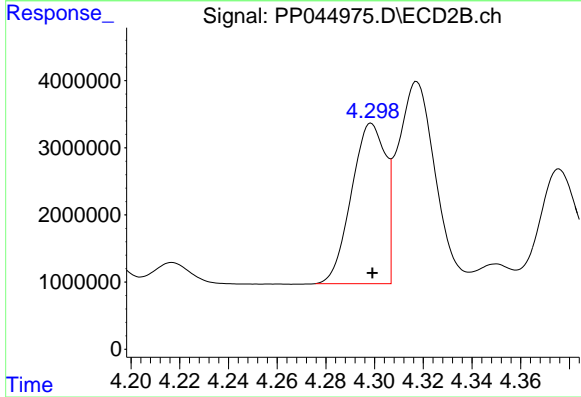
R.T.: 5.151 min
 Delta R.T.: -0.001 min
 Response: 22933211
 Conc: 576.50 ng/ml



#21 AR-1248-1

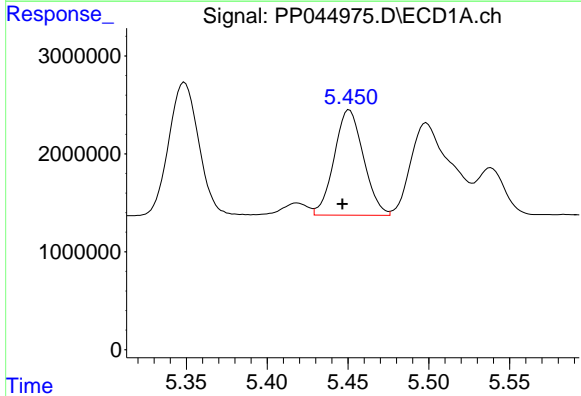
R.T.: 5.154 min
 Delta R.T.: 0.004 min
 Response: 24026752
 Conc: 683.14 ng/ml

Instrument :
 ECD_P
 ClientSampleId :



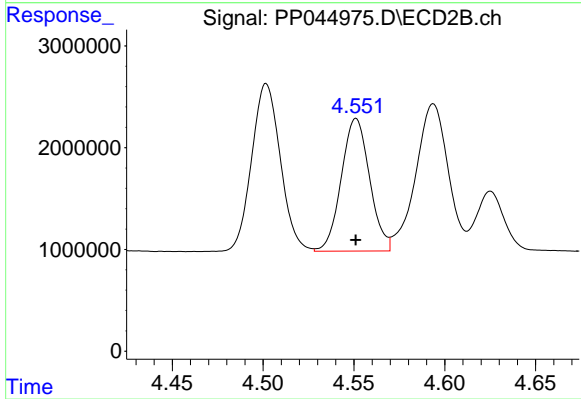
#21 AR-1248-1

R.T.: 4.299 min
 Delta R.T.: 0.000 min
 Response: 23175568
 Conc: 733.85 ng/ml



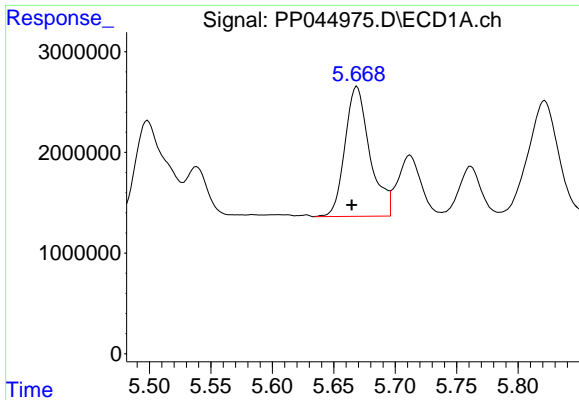
#22 AR-1248-2

R.T.: 5.451 min
 Delta R.T.: 0.004 min
 Response: 13580411
 Conc: 287.08 ng/ml



#22 AR-1248-2

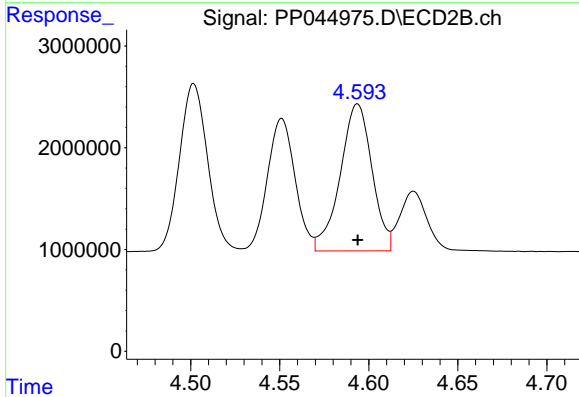
R.T.: 4.551 min
 Delta R.T.: 0.000 min
 Response: 14157208
 Conc: 323.72 ng/ml



#23 AR-1248-3

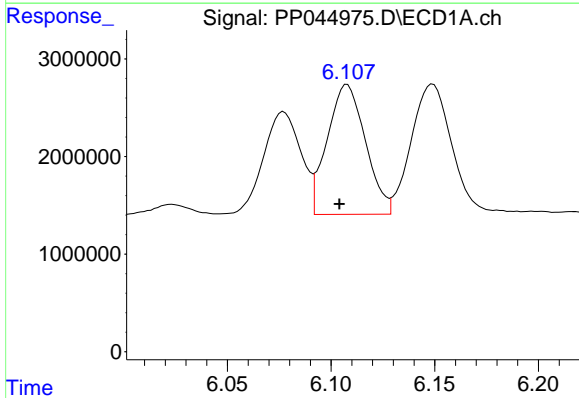
R.T.: 5.669 min
 Delta R.T.: 0.004 min
 Response: 18165541
 Conc: 307.44 ng/ml

Instrument :
 ECD_P
 ClientSampleId :



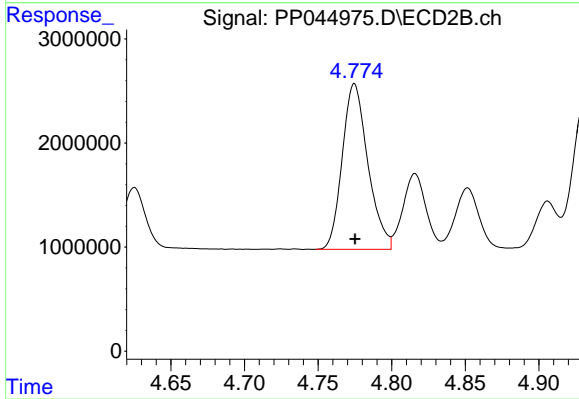
#23 AR-1248-3

R.T.: 4.594 min
 Delta R.T.: 0.000 min
 Response: 17958314
 Conc: 393.01 ng/ml



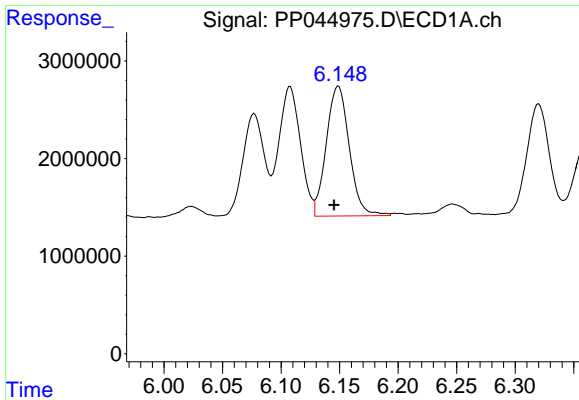
#24 AR-1248-4

R.T.: 6.108 min
 Delta R.T.: 0.004 min
 Response: 17079053
 Conc: 269.13 ng/ml



#24 AR-1248-4

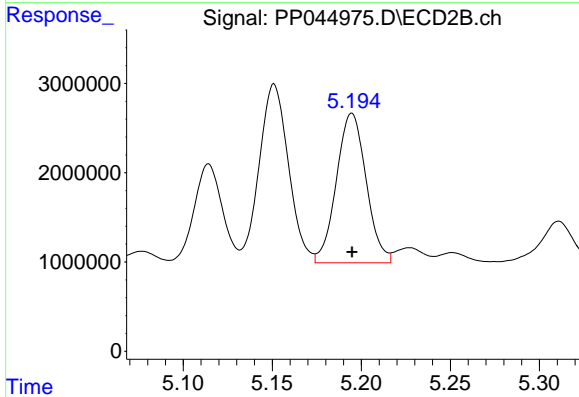
R.T.: 4.775 min
 Delta R.T.: 0.000 min
 Response: 19278004
 Conc: 356.86 ng/ml



#25 AR-1248-5

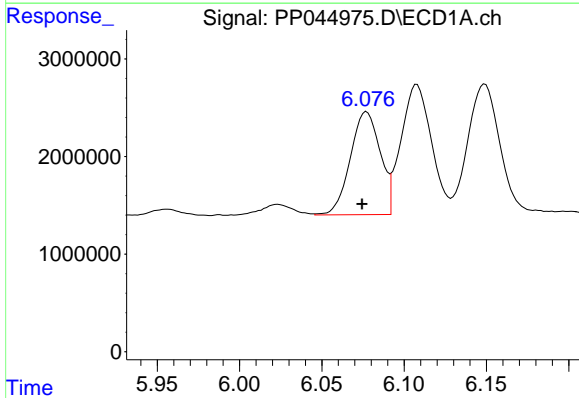
R.T.: 6.149 min
 Delta R.T.: 0.004 min
 Response: 18204596
 Conc: 291.76 ng/ml

Instrument :
 ECD_P
 ClientSampleId :



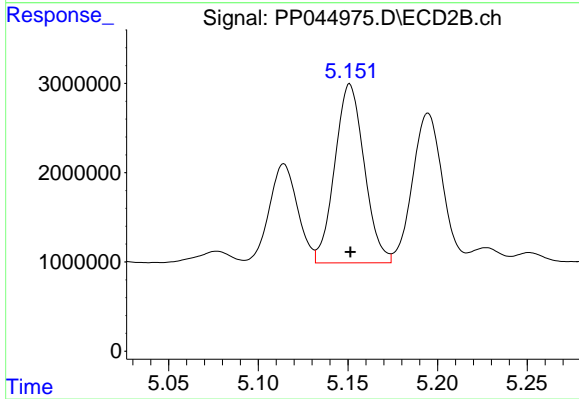
#25 AR-1248-5

R.T.: 5.195 min
 Delta R.T.: 0.000 min
 Response: 19518715
 Conc: 347.66 ng/ml



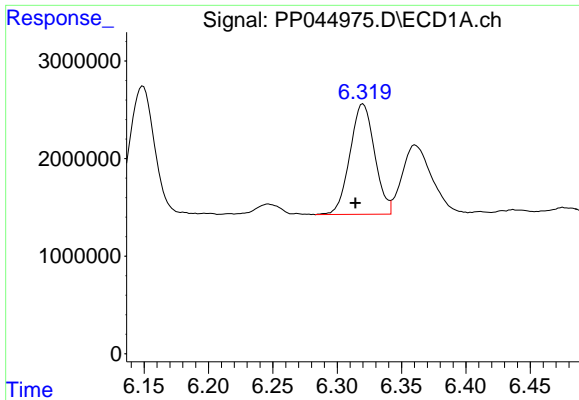
#26 AR-1254-1

R.T.: 6.077 min
 Delta R.T.: 0.003 min
 Response: 13324179
 Conc: 200.67 ng/ml



#26 AR-1254-1

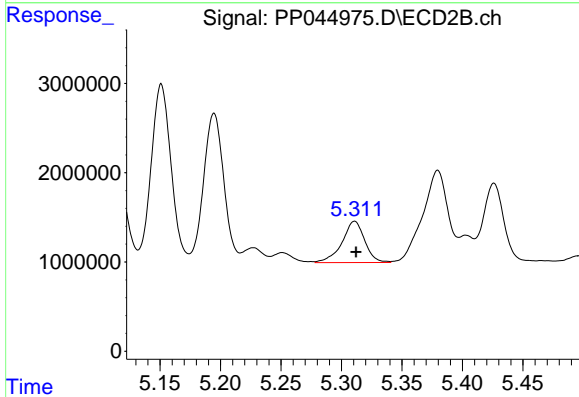
R.T.: 5.151 min
 Delta R.T.: 0.000 min
 Response: 22933211
 Conc: 265.20 ng/ml



#27 AR-1254-2

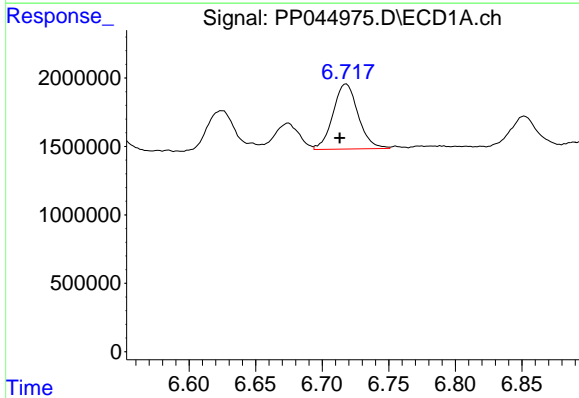
R.T.: 6.320 min
 Delta R.T.: 0.006 min
 Response: 15068664
 Conc: 150.82 ng/ml

Instrument :
 ECD_P
 ClientSampleId :



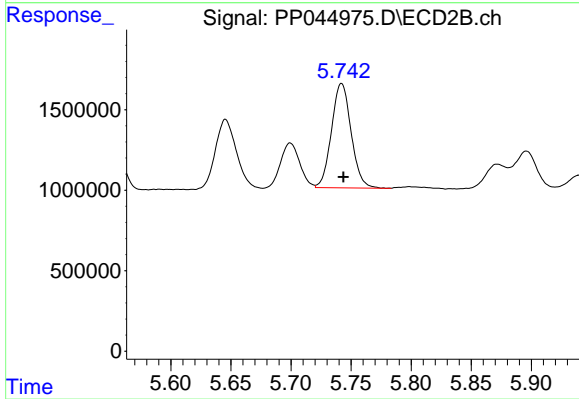
#27 AR-1254-2

R.T.: 5.311 min
 Delta R.T.: 0.000 min
 Response: 6042335
 Conc: 81.20 ng/ml



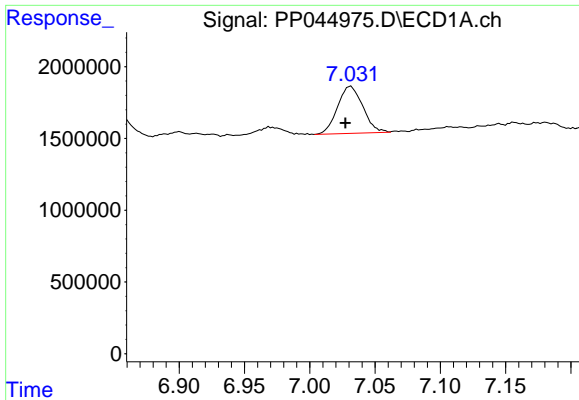
#28 AR-1254-3

R.T.: 6.718 min
 Delta R.T.: 0.005 min
 Response: 6268217
 Conc: 61.29 ng/ml



#28 AR-1254-3

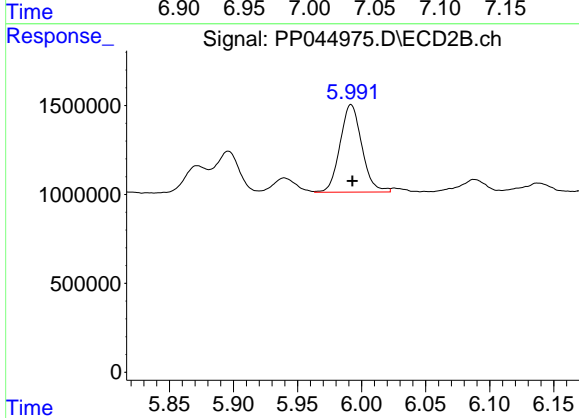
R.T.: 5.742 min
 Delta R.T.: -0.001 min
 Response: 7384055
 Conc: 64.27 ng/ml



#29 AR-1254-4

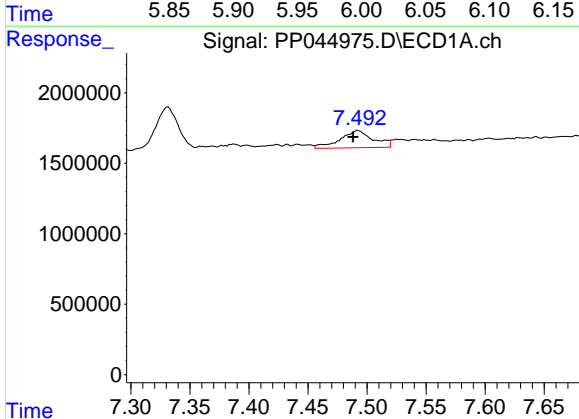
R.T.: 7.031 min
 Delta R.T.: 0.004 min
 Response: 4437874
 Conc: 61.01 ng/ml

Instrument :
 ECD_P
 ClientSampleId :



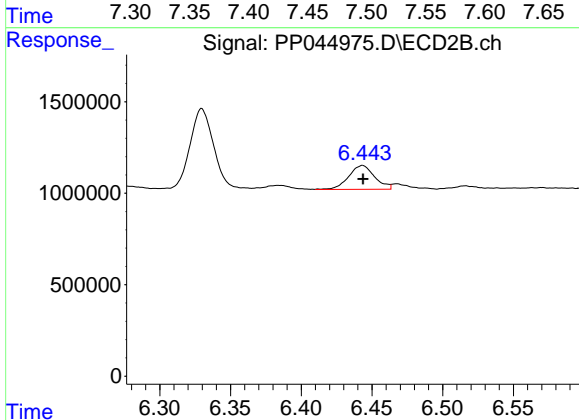
#29 AR-1254-4

R.T.: 5.992 min
 Delta R.T.: -0.001 min
 Response: 5836797
 Conc: 78.29 ng/ml



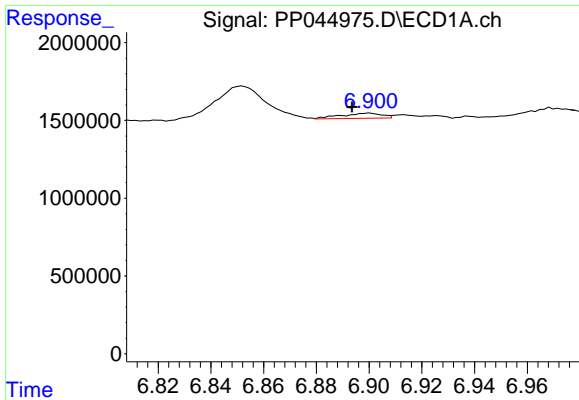
#30 AR-1254-5

R.T.: 7.492 min
 Delta R.T.: 0.004 min
 Response: 2391182
 Conc: 30.92 ng/ml



#30 AR-1254-5

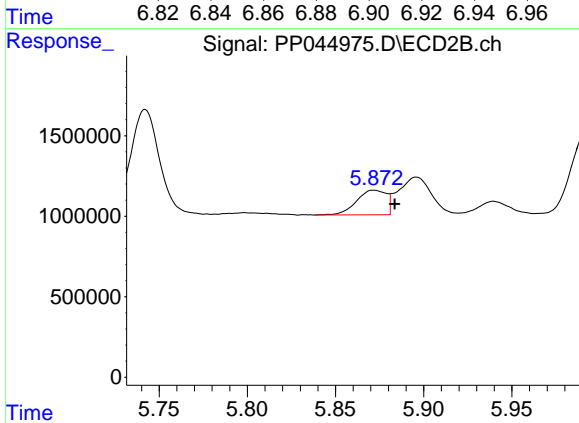
R.T.: 6.443 min
 Delta R.T.: 0.000 min
 Response: 1672254
 Conc: 16.24 ng/ml



#31 AR-1260-1

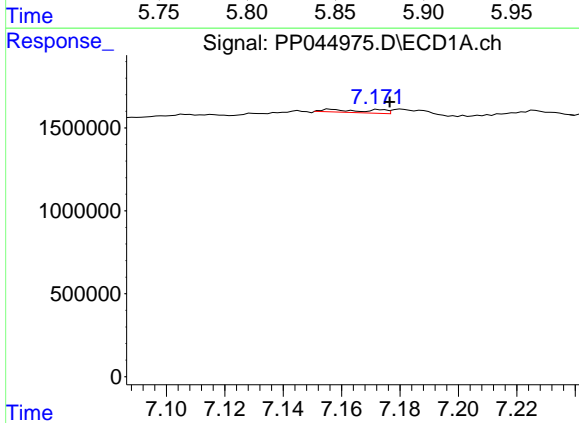
R.T.: 6.900 min
 Delta R.T.: 0.007 min
 Response: 349617
 Conc: 5.08 ng/ml

Instrument :
 ECD_P
 ClientSampleId :



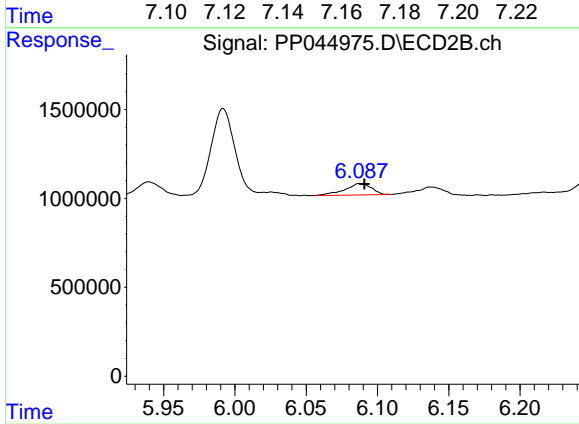
#31 AR-1260-1

R.T.: 5.872 min
 Delta R.T.: -0.012 min
 Response: 1798055
 Conc: 25.54 ng/ml



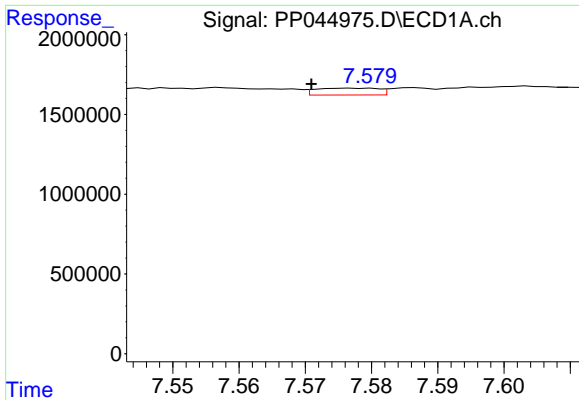
#32 AR-1260-2

R.T.: 7.173 min
 Delta R.T.: -0.003 min
 Response: 166456
 Conc: 2.14 ng/ml



#32 AR-1260-2

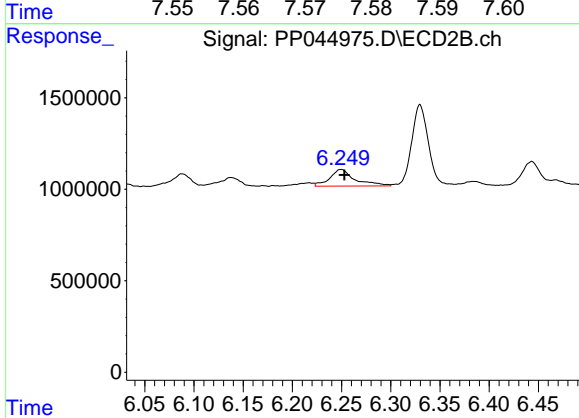
R.T.: 6.088 min
 Delta R.T.: -0.003 min
 Response: 845729
 Conc: 9.46 ng/ml



#33 AR-1260-3

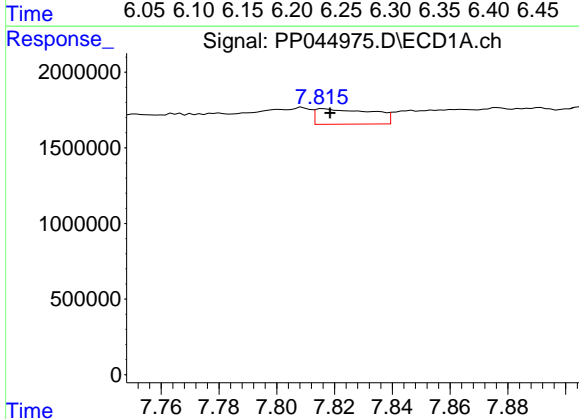
R.T.: 7.577 min
 Delta R.T.: 0.006 min
 Response: 281937
 Conc: 4.48 ng/ml

Instrument :
 ECD_P
 ClientSampleId :



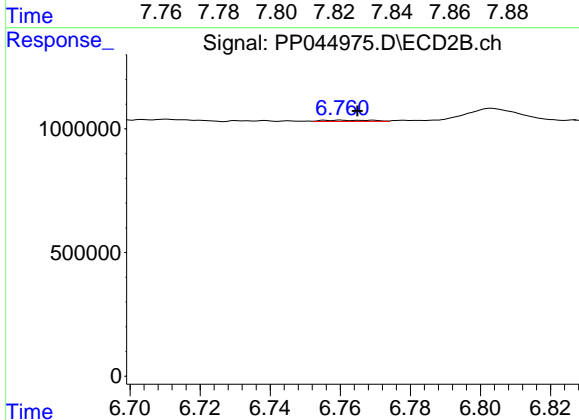
#33 AR-1260-3

R.T.: 6.249 min
 Delta R.T.: -0.004 min
 Response: 1636422
 Conc: 19.21 ng/ml



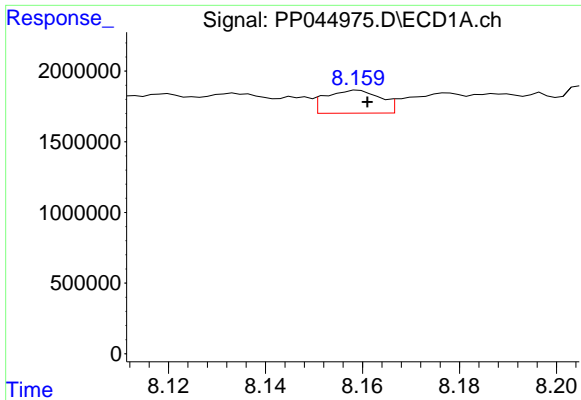
#34 AR-1260-4

R.T.: 7.816 min
 Delta R.T.: -0.002 min
 Response: 1394005
 Conc: 19.00 ng/ml



#34 AR-1260-4

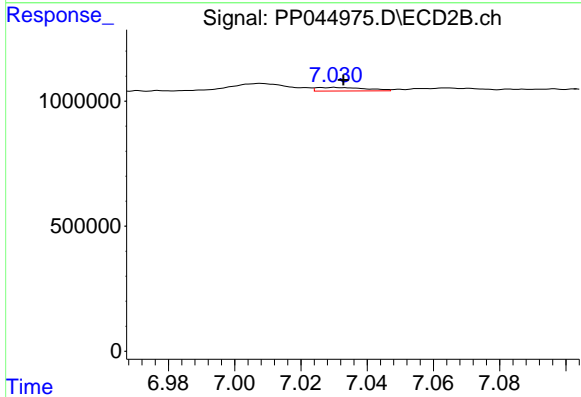
R.T.: 6.760 min
 Delta R.T.: -0.005 min
 Response: 49370
 Conc: 0.73 ng/ml



#35 AR-1260-5

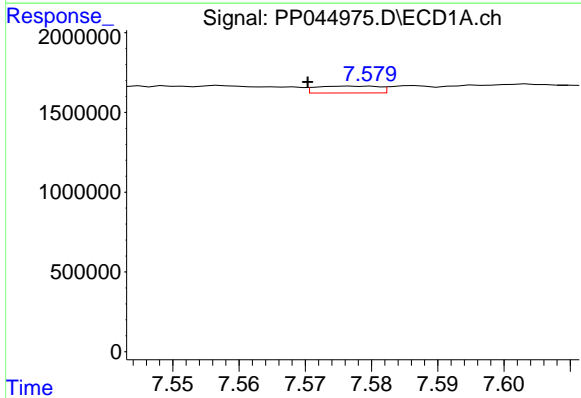
R.T.: 8.159 min
 Delta R.T.: -0.002 min
 Response: 1262599
 Conc: 9.02 ng/ml

Instrument :
 ECD_P
 ClientSampleId :



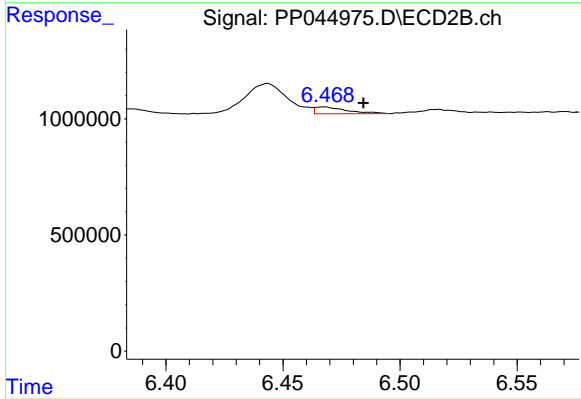
#35 AR-1260-5

R.T.: 7.030 min
 Delta R.T.: -0.003 min
 Response: 145009
 Conc: 0.93 ng/ml



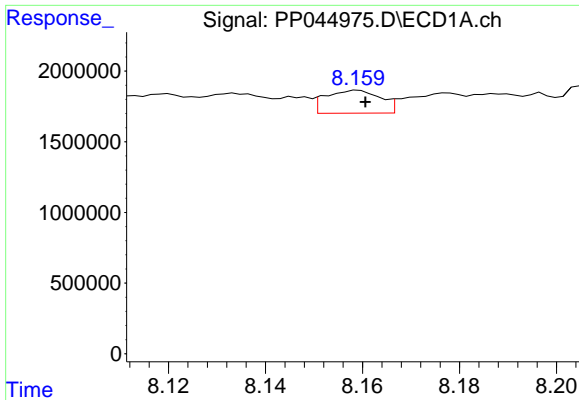
#36 AR-1262-1

R.T.: 7.577 min
 Delta R.T.: 0.007 min
 Response: 281937
 Conc: 2.97 ng/ml



#36 AR-1262-1

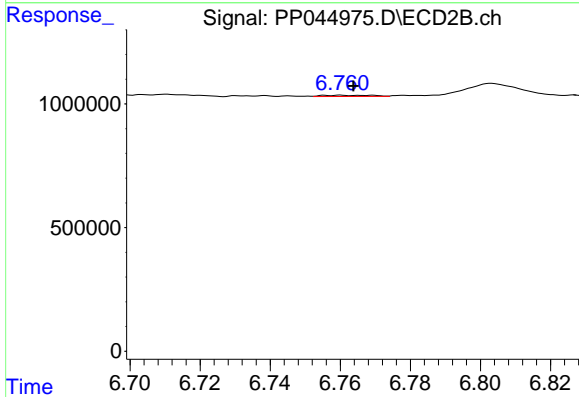
R.T.: 6.467 min
 Delta R.T.: -0.017 min
 Response: 272881
 Conc: 2.65 ng/ml



#37 AR-1262-2

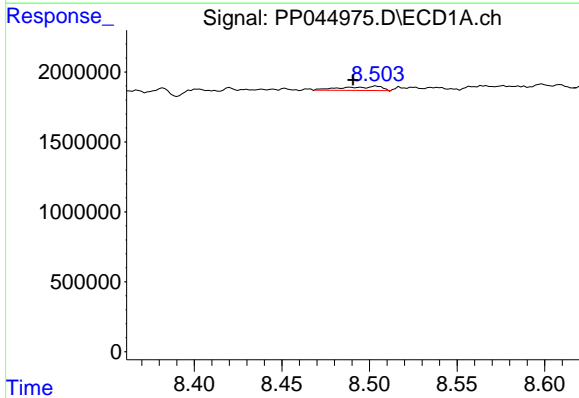
R.T.: 8.159 min
 Delta R.T.: -0.002 min
 Response: 1262599
 Conc: 7.85 ng/ml

Instrument :
 ECD_P
 ClientSampleId :



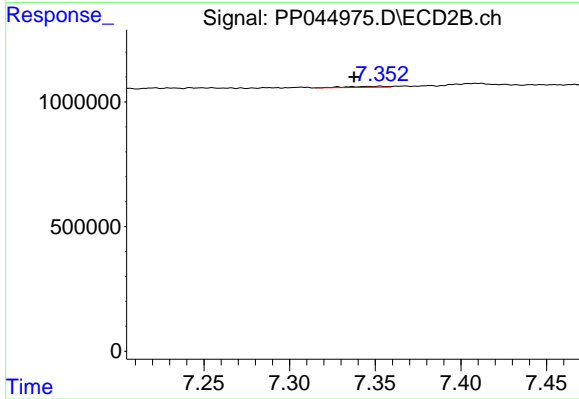
#37 AR-1262-2

R.T.: 6.760 min
 Delta R.T.: -0.003 min
 Response: 49370
 Conc: 0.53 ng/ml



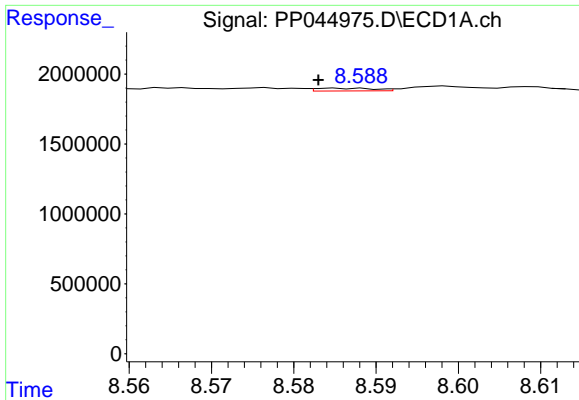
#38 AR-1262-3

R.T.: 8.504 min
 Delta R.T.: 0.013 min
 Response: 455744
 Conc: 4.22 ng/ml



#38 AR-1262-3

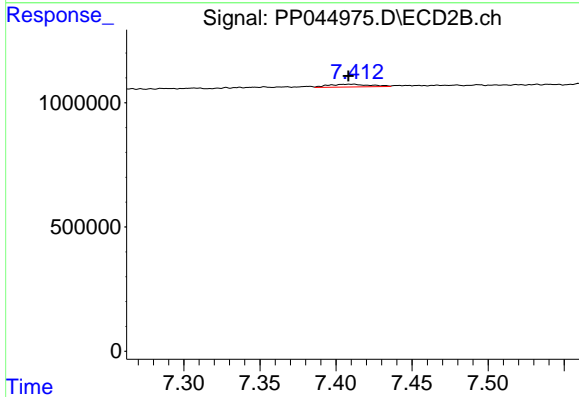
R.T.: 7.353 min
 Delta R.T.: 0.015 min
 Response: 65833
 Conc: 0.90 ng/ml



#39 AR-1262-4

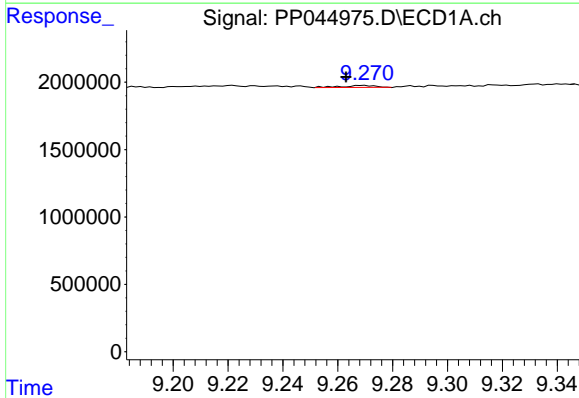
R.T.: 8.585 min
 Delta R.T.: 0.002 min
 Response: 96337
 Conc: 1.88 ng/ml

Instrument :
 ECD_P
 ClientSampleId :



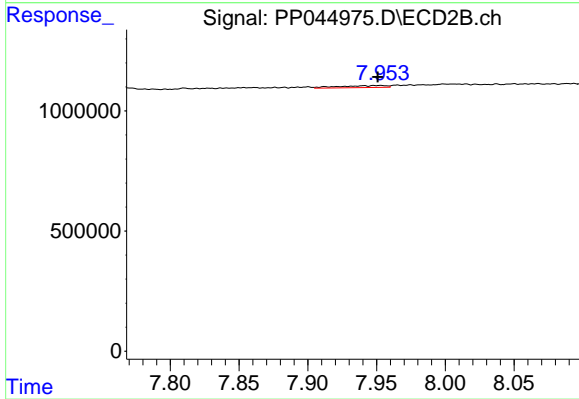
#39 AR-1262-4

R.T.: 7.411 min
 Delta R.T.: 0.003 min
 Response: 205532
 Conc: 1.53 ng/ml



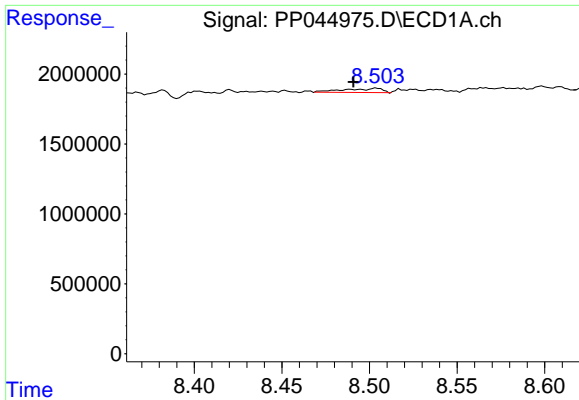
#40 AR-1262-5

R.T.: 9.269 min
 Delta R.T.: 0.006 min
 Response: 122370
 Conc: 2.19 ng/ml



#40 AR-1262-5

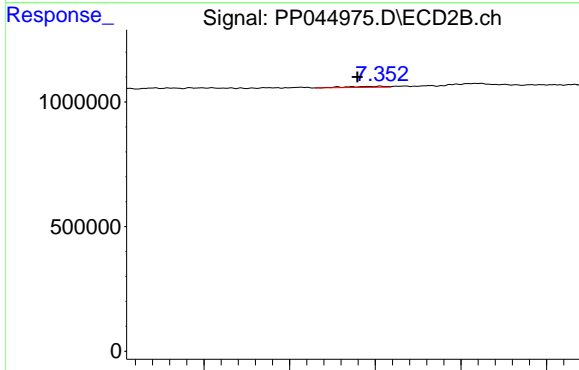
R.T.: 7.953 min
 Delta R.T.: 0.002 min
 Response: 201557
 Conc: 3.06 ng/ml



#41 AR-1268-1

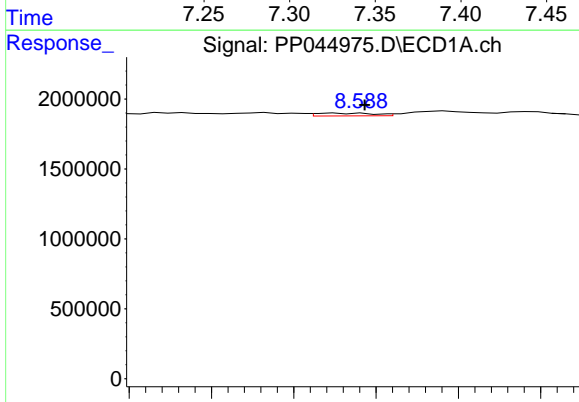
R.T.: 8.504 min
 Delta R.T.: 0.013 min
 Response: 455744
 Conc: 2.37 ng/ml

Instrument :
 ECD_P
 ClientSampleId :



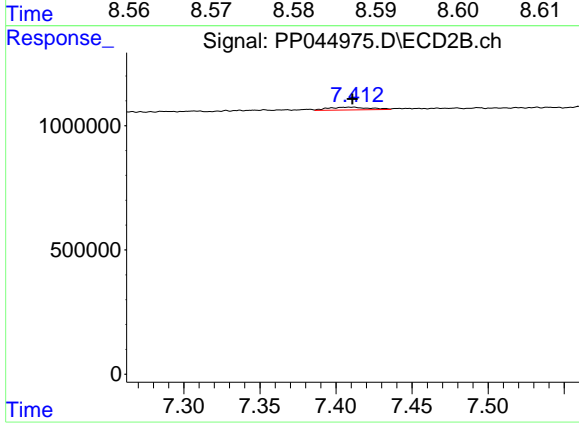
#41 AR-1268-1

R.T.: 7.353 min
 Delta R.T.: 0.013 min
 Response: 65833
 Conc: 0.31 ng/ml



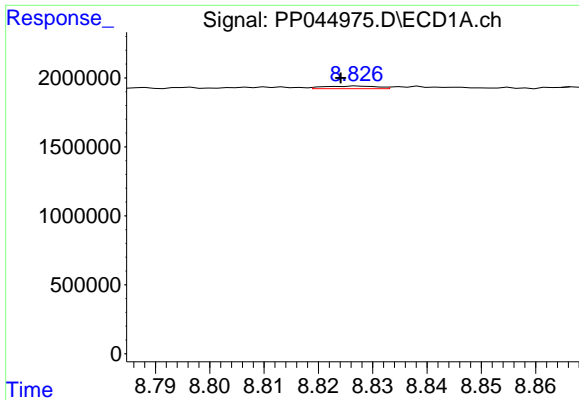
#42 AR-1268-2

R.T.: 8.585 min
 Delta R.T.: -0.004 min
 Response: 96337
 Conc: 0.55 ng/ml



#42 AR-1268-2

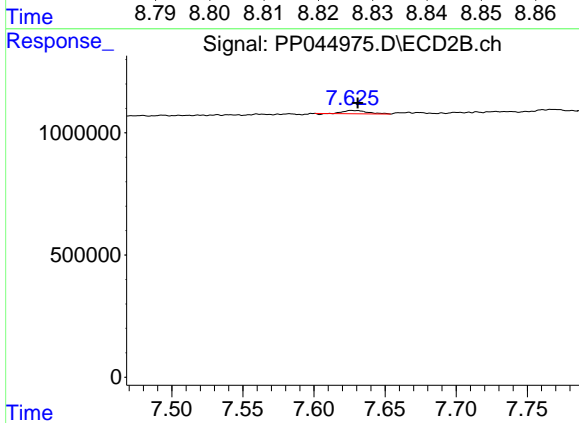
R.T.: 7.411 min
 Delta R.T.: 0.000 min
 Response: 205532
 Conc: 1.05 ng/ml



#43 AR-1268-3

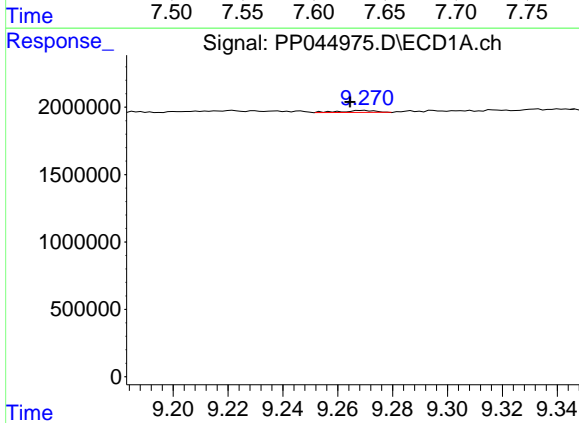
R.T.: 8.827 min
 Delta R.T.: 0.003 min
 Response: 127590
 Conc: 0.84 ng/ml

Instrument :
 ECD_P
 ClientSampleId :



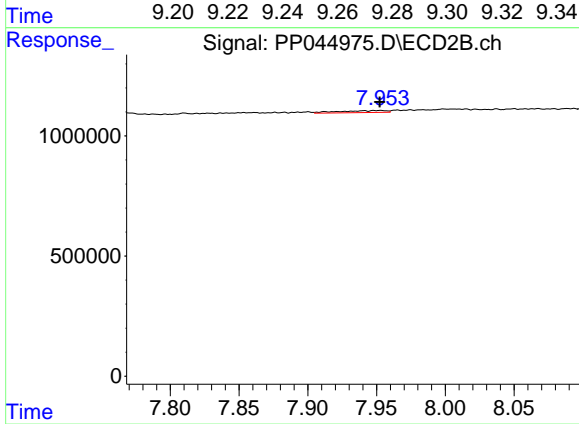
#43 AR-1268-3

R.T.: 7.627 min
 Delta R.T.: -0.004 min
 Response: 147266
 Conc: 0.89 ng/ml



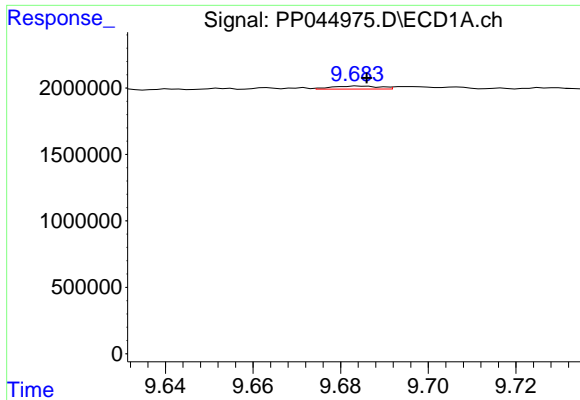
#44 AR-1268-4

R.T.: 9.269 min
 Delta R.T.: 0.005 min
 Response: 122370
 Conc: 1.96 ng/ml



#44 AR-1268-4

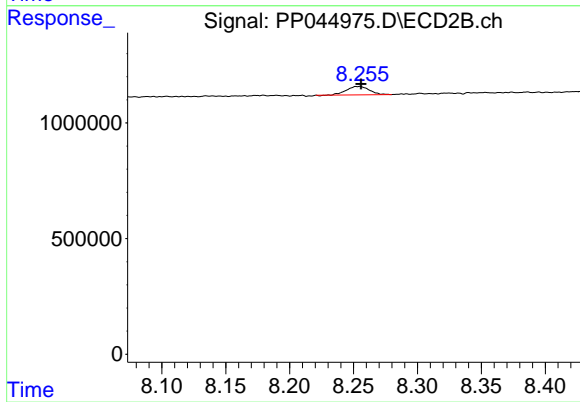
R.T.: 7.953 min
 Delta R.T.: 0.000 min
 Response: 201557
 Conc: 2.63 ng/ml



#45 AR-1268-5

R.T.: 9.684 min
 Delta R.T.: -0.002 min
 Response: 171852
 Conc: 0.36 ng/ml

Instrument :
 ECD_P
 ClientSampleId :



#45 AR-1268-5

R.T.: 8.254 min
 Delta R.T.: -0.001 min
 Response: 448048
 Conc: 0.87 ng/ml