

Data Path : Z:\pestpcbsrv\HPCHEM1\ECD_P\Data\PP032222\
 Data File : PP044990.D
 Signal(s) : Signal #1: ECD1A.ch Signal #2: ECD2B.ch
 Acq On : 22 Mar 2022 18:22
 Operator : YP\AJ
 Sample : N2058-01
 Misc :
 ALS Vial : 13 Sample Multiplier: 1

Instrument :
 ECD_P
 ClientSampleId :

Integration File signal 1: autoint1.e
 Integration File signal 2: autoint2.e
 Quant Time: Mar 23 05:00:47 2022
 Quant Method : Z:\pestpcbsrv\HPCHEM1\ECD_P\methods\PP031722.M
 Quant Title : GC EXTRACTABLES
 QLast Update : Thu Mar 17 04:32:40 2022
 Response via : Initial Calibration
 Integrator: ChemStation

Volume Inj. : 2 µl
 Signal #1 Phase : ZB-MR1 Signal #2 Phase: ZB-MR2
 Signal #1 Info : 30Mx0.32mmx 0.50µ Signal #2 Info : 30M x 0.32mm x 0.25µm

Compound	RT#1	RT#2	Resp#1	Resp#2	ng/ml	ng/ml

System Monitoring Compounds						
1) SA Tetrachlo...	3.895	3.155	43372739	34904909	23.804	26.487
2) SA Decachlor...	10.015	8.510	29269926	30660937	22.738	23.597
Target Compounds						
3) L1 AR-1016-1	5.156	4.297	77531	21578	1.321	0.426 #
4) L1 AR-1016-2	5.175	4.317	115234	211262	1.289	2.931 #
5) L1 AR-1016-3	5.234	4.507	82197	31030	1.579	0.789 #
6) L1 AR-1016-4	5.335	4.551	-4371	18666	N.D.	0.593 #
7) L1 AR-1016-5	5.671	4.781	182383	22847	4.156	0.572 #
8) L2 AR-1221-1	4.126f	3.375	1224897	10894	59.680	0.734 #
9) L2 AR-1221-2	4.220f	3.467	757369	1213349	49.541	97.939 #
10) L2 AR-1221-3	4.311	3.550	69423	91155	1.438	2.348 #
11) L3 AR-1232-1	4.290	3.550	89099	91155	1.980	2.536 #
12) L3 AR-1232-2	4.867	4.317	218808	211262	10.413	6.109 #
13) L3 AR-1232-3	5.175	4.507	115234	31030	2.762	1.657 #
14) L3 AR-1232-4	5.335	4.593	-4371	11781	N.D.	0.712 #
15) L3 AR-1232-5	5.444	4.781	27125	22847	1.920	1.236 #
16) L4 AR-1242-1	5.156	4.297	77531	21578	1.690	0.540 #
17) L4 AR-1242-2	5.175	4.317	115234	211262	1.646	3.722 #
18) L4 AR-1242-3	5.234	4.497	82197	56706	2.001	1.818
19) L4 AR-1242-4	5.335	4.593	-4371	11781	N.D.	0.389 #
20) L4 AR-1242-5	6.135	5.147	321983	361229	8.805	9.081
21) L5 AR-1248-1	5.156	4.297	77531	21578	2.204	0.683 #
22) L5 AR-1248-2	5.444	4.551	27125	18666	0.573	0.427 #
23) L5 AR-1248-3	5.671	4.593	182383	11781	3.087	0.258 #
24) L5 AR-1248-4	6.107	4.781	60504	22847	0.953	0.423 #
25) L5 AR-1248-5	6.135	5.195	321983	165562	5.160	2.949 #
26) L6 AR-1254-1	6.072	5.147	86346	361229	1.300	4.177 #
27) L6 AR-1254-2	6.308	5.314	154918	30455	1.551	0.409 #
28) L6 AR-1254-3	6.717	5.746	379669	26795	3.712	0.233 #
29) L6 AR-1254-4	7.029	5.990	84818	53637	1.166	0.719 #
30) L6 AR-1254-5	7.499	6.438	64464	180135	0.833	1.749 #
31) L7 AR-1260-1	6.891	5.879	52426	93801	0.761	1.332 #
32) L7 AR-1260-2	7.169	6.087	77520	47875	0.998	0.535 #
33) L7 AR-1260-3	7.576	6.264	165513	1063895	2.630	12.492 #
34) L7 AR-1260-4	7.823	6.753	212743	284272	2.900	4.230 #
35) L7 AR-1260-5	8.163	7.030	266897	144401	1.906	0.924 #
36) L8 AR-1262-1	7.576	6.492	165513	14614	1.746	0.142 #
37) L8 AR-1262-2	8.163	6.753	266897	284272	1.659	3.080 #
38) L8 AR-1262-3	8.485	7.338	86380	178037	0.801	2.446 #
39) L8 AR-1262-4	8.582	7.396	219731	284423	4.296	2.116 #
40) L8 AR-1262-5	9.268	7.952	62361	118873	1.116	1.806 #
41) L9 AR-1268-1	8.485	7.338	86380	178037	0.449	0.825 #

Data Path : Z:\pestpcbsrv\HPCHEM1\ECD_P\Data\PP032222\
 Data File : PP044990.D
 Signal(s) : Signal #1: ECD1A.ch Signal #2: ECD2B.ch
 Acq On : 22 Mar 2022 18:22
 Operator : YP\AJ
 Sample : N2058-01
 Misc :
 ALS Vial : 13 Sample Multiplier: 1

Instrument :
 ECD_P
 ClientSampleId :

Integration File signal 1: autoint1.e
 Integration File signal 2: autoint2.e
 Quant Time: Mar 23 05:00:47 2022
 Quant Method : Z:\pestpcbsrv\HPCHEM1\ECD_P\methods\PP031722.M
 Quant Title : GC EXTRACTABLES
 QLast Update : Thu Mar 17 04:32:40 2022
 Response via : Initial Calibration
 Integrator: ChemStation

Volume Inj. : 2 µl
 Signal #1 Phase : ZB-MR1 Signal #2 Phase: ZB-MR2
 Signal #1 Info : 30Mx0.32mmx 0.50µ Signal #2 Info : 30M x 0.32mm x 0.25µm

	Compound	RT#1	RT#2	Resp#1	Resp#2	ng/ml	ng/ml
42)	L9 AR-1268-2	8.590	7.421	130254	62443	0.746	0.319 #
43)	L9 AR-1268-3	8.821	7.626	161577	320148	1.058	1.944 #
44)	L9 AR-1268-4	9.268	7.952	62361	118873	0.996	1.552 #
45)	L9 AR-1268-5	9.678	8.250	576906	782655	1.197	1.519 #

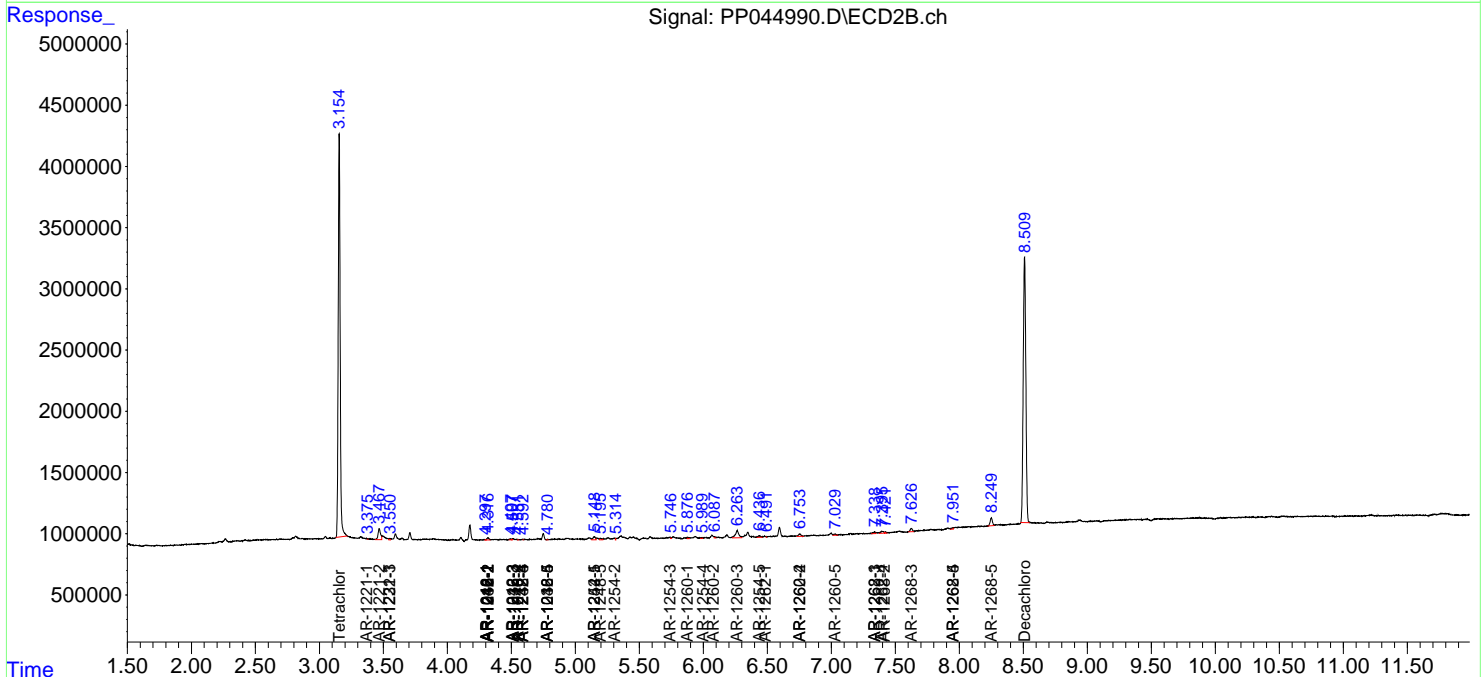
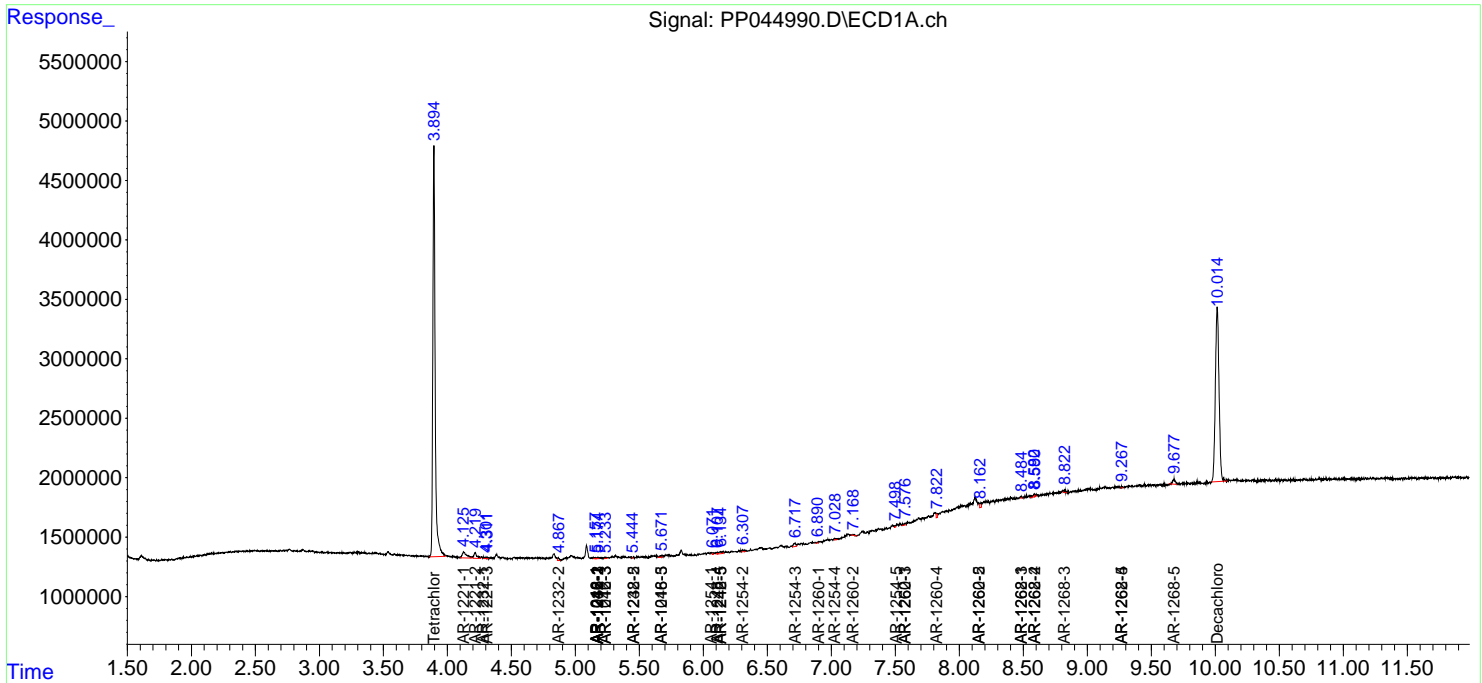
(f)=RT Delta > 1/2 Window (#)=Amounts differ by > 25% (m)=manual int.

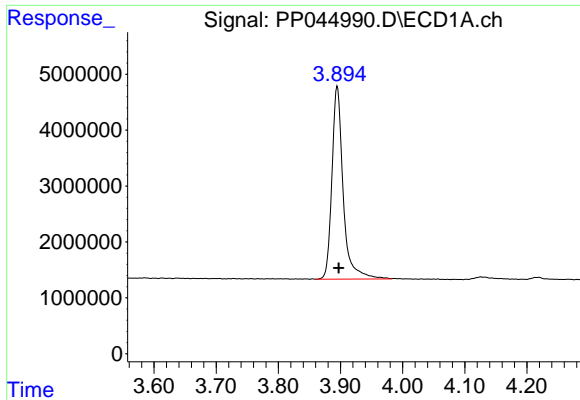
Data Path : Z:\pestpcbsrv\HPCHEM1\ECD_P\Data\PP032222\
 Data File : PP044990.D
 Signal(s) : Signal #1: ECD1A.ch Signal #2: ECD2B.ch
 Acq On : 22 Mar 2022 18:22
 Operator : YP\AJ
 Sample : N2058-01
 Misc :
 ALS Vial : 13 Sample Multiplier: 1

Instrument :
 ECD_P
 ClientSampleId :

Integration File signal 1: autoint1.e
 Integration File signal 2: autoint2.e
 Quant Time: Mar 23 05:00:47 2022
 Quant Method : Z:\pestpcbsrv\HPCHEM1\ECD_P\methods\PP031722.M
 Quant Title : GC EXTRACTABLES
 QLast Update : Thu Mar 17 04:32:40 2022
 Response via : Initial Calibration
 Integrator: ChemStation

Volume Inj. : 2 µl
 Signal #1 Phase : ZB-MR1 Signal #2 Phase: ZB-MR2
 Signal #1 Info : 30Mx0.32mmx 0.50µ Signal #2 Info : 30M x 0.32mm x 0.25µm

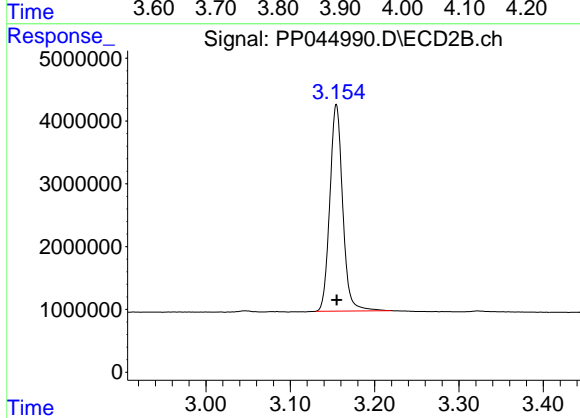




#1 Tetrachloro-m-xylene

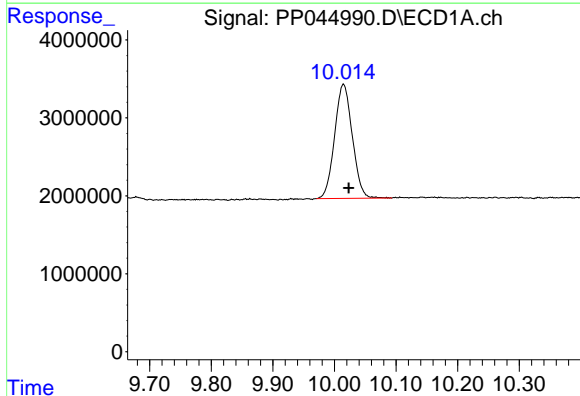
R.T.: 3.895 min
 Delta R.T.: -0.002 min
 Response: 43372739
 Conc: 23.80 ng/ml

Instrument :
 ECD_P
 ClientSampleId :



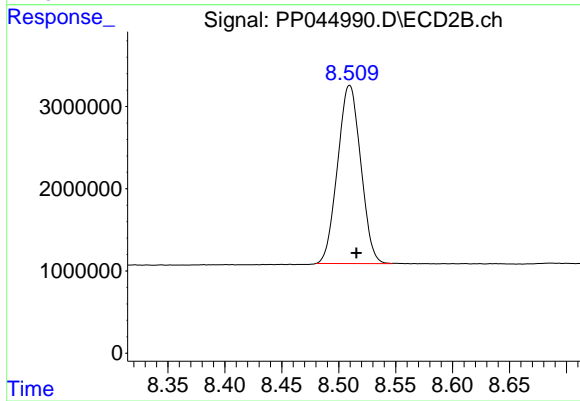
#1 Tetrachloro-m-xylene

R.T.: 3.155 min
 Delta R.T.: 0.000 min
 Response: 34904909
 Conc: 26.49 ng/ml



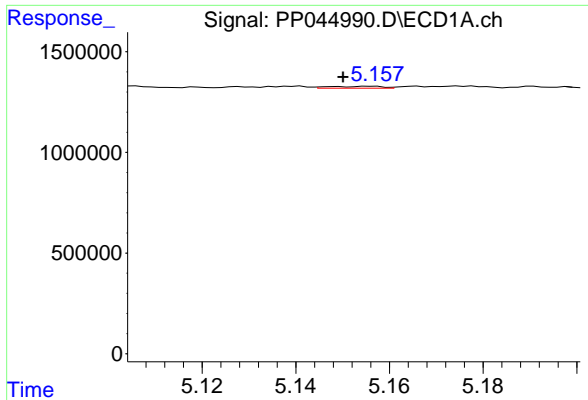
#2 Decachlorobiphenyl

R.T.: 10.015 min
 Delta R.T.: -0.008 min
 Response: 29269926
 Conc: 22.74 ng/ml



#2 Decachlorobiphenyl

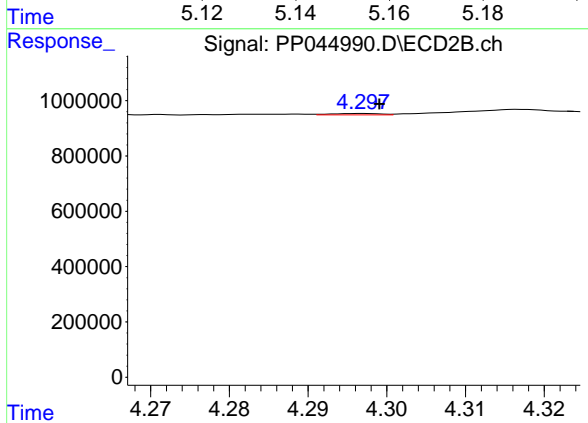
R.T.: 8.510 min
 Delta R.T.: -0.006 min
 Response: 30660937
 Conc: 23.60 ng/ml



#3 AR-1016-1

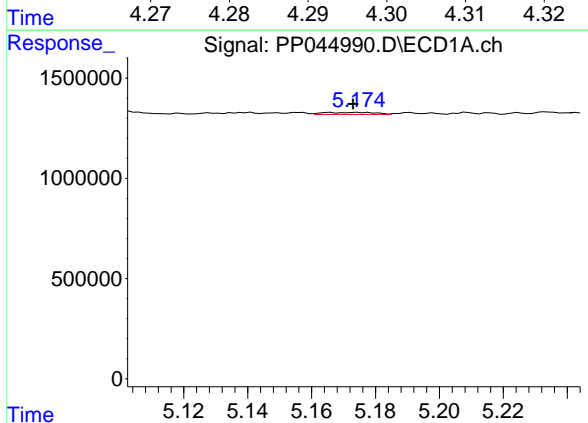
R.T.: 5.156 min
 Delta R.T.: 0.006 min
 Response: 77531
 Conc: 1.32 ng/ml

Instrument :
 ECD_P
 ClientSampleId :



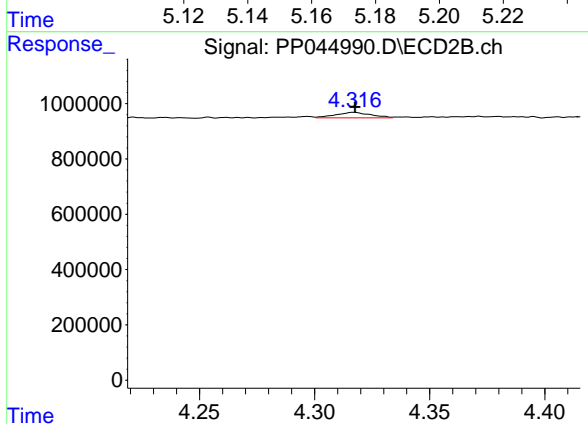
#3 AR-1016-1

R.T.: 4.297 min
 Delta R.T.: -0.002 min
 Response: 21578
 Conc: 0.43 ng/ml



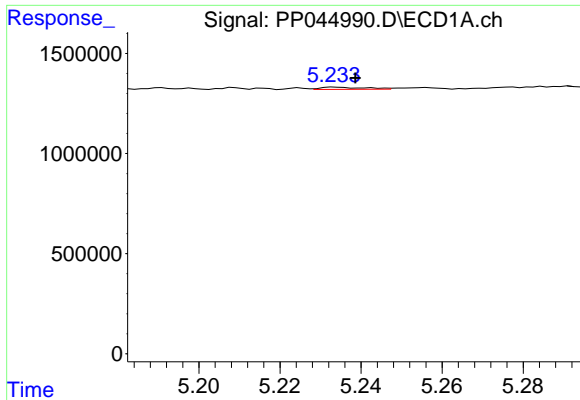
#4 AR-1016-2

R.T.: 5.175 min
 Delta R.T.: 0.002 min
 Response: 115234
 Conc: 1.29 ng/ml



#4 AR-1016-2

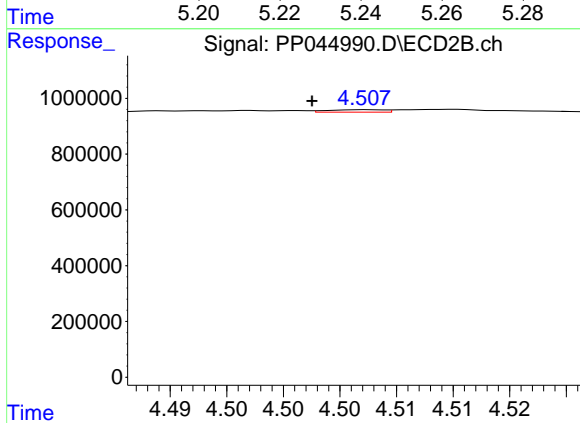
R.T.: 4.317 min
 Delta R.T.: 0.000 min
 Response: 211262
 Conc: 2.93 ng/ml



#5 AR-1016-3

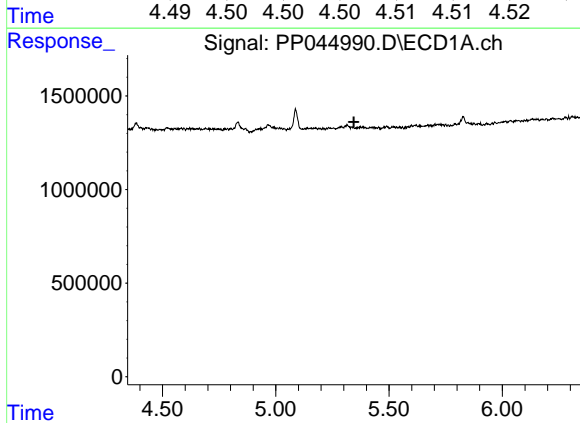
R.T.: 5.234 min
 Delta R.T.: -0.005 min
 Response: 82197
 Conc: 1.58 ng/ml

Instrument :
 ECD_P
 ClientSampleId :



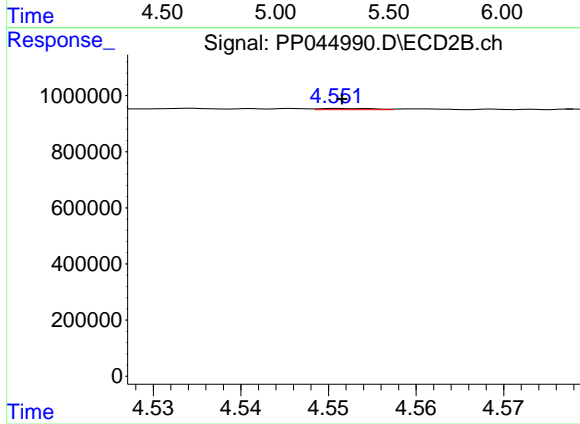
#5 AR-1016-3

R.T.: 4.507 min
 Delta R.T.: 0.005 min
 Response: 31030
 Conc: 0.79 ng/ml



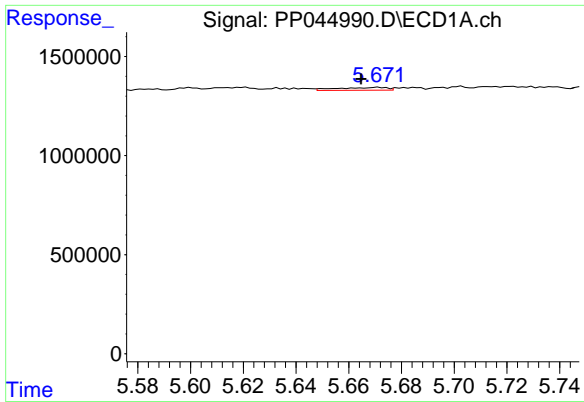
#6 AR-1016-4

R.T.: 5.335 min
 Delta R.T.: -0.010 min
 Response: -4371
 Conc: N.D.



#6 AR-1016-4

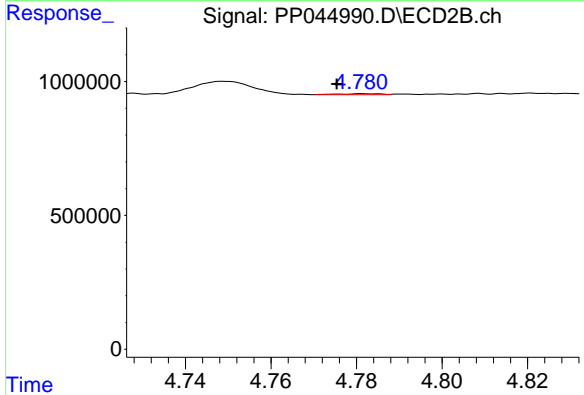
R.T.: 4.551 min
 Delta R.T.: 0.000 min
 Response: 18666
 Conc: 0.59 ng/ml



#7 AR-1016-5

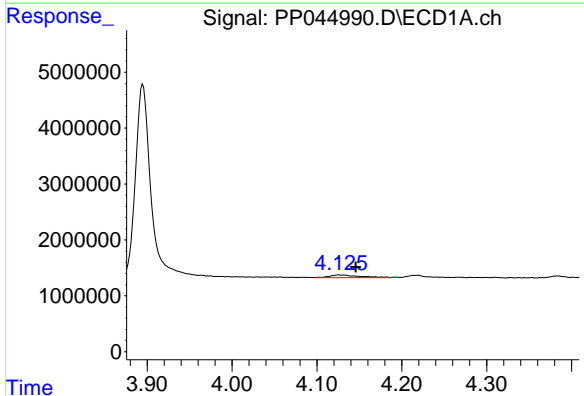
R.T.: 5.671 min
 Delta R.T.: 0.007 min
 Response: 182383
 Conc: 4.16 ng/ml

Instrument :
 ECD_P
 ClientSampleId :



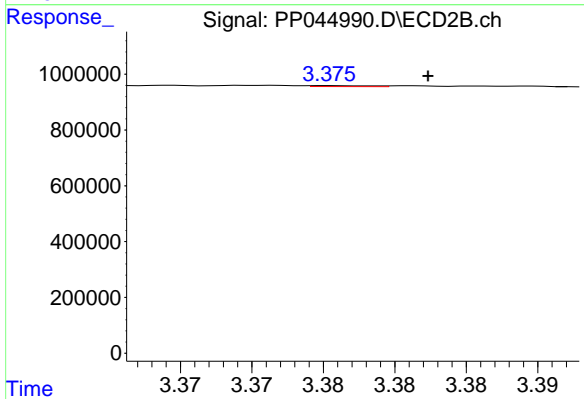
#7 AR-1016-5

R.T.: 4.781 min
 Delta R.T.: 0.006 min
 Response: 22847
 Conc: 0.57 ng/ml



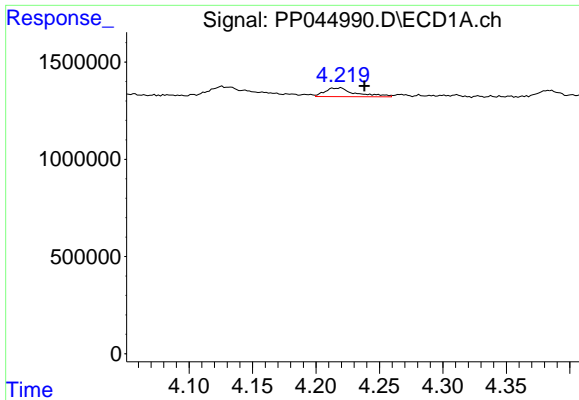
#8 AR-1221-1

R.T.: 4.126 min
 Delta R.T.: -0.020 min
 Response: 1224897
 Conc: 59.68 ng/ml



#8 AR-1221-1

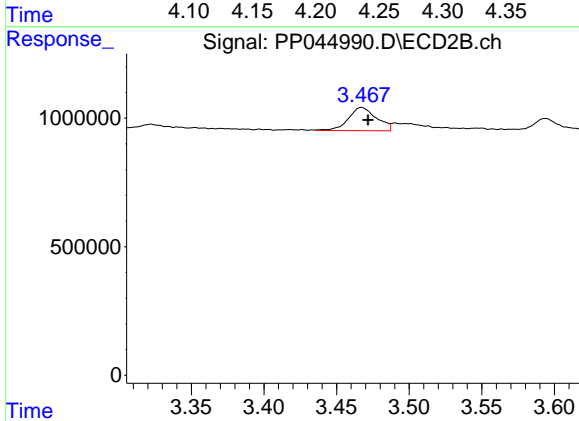
R.T.: 3.375 min
 Delta R.T.: -0.007 min
 Response: 10894
 Conc: 0.73 ng/ml



#9 AR-1221-2

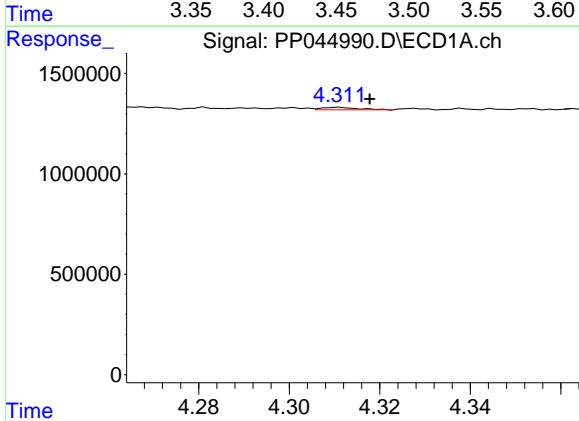
R.T.: 4.220 min
 Delta R.T.: -0.018 min
 Response: 757369
 Conc: 49.54 ng/ml

Instrument :
 ECD_P
 ClientSampleId :



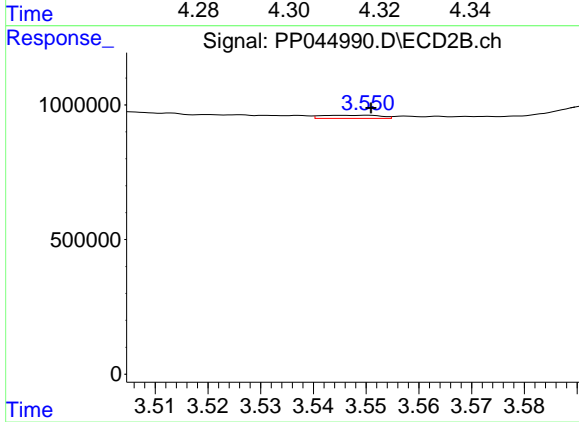
#9 AR-1221-2

R.T.: 3.467 min
 Delta R.T.: -0.004 min
 Response: 1213349
 Conc: 97.94 ng/ml



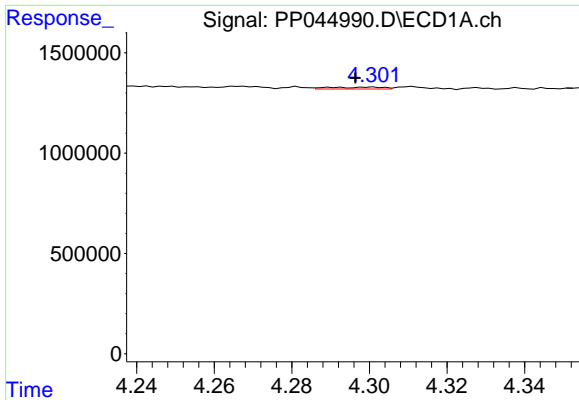
#10 AR-1221-3

R.T.: 4.311 min
 Delta R.T.: -0.007 min
 Response: 69423
 Conc: 1.44 ng/ml



#10 AR-1221-3

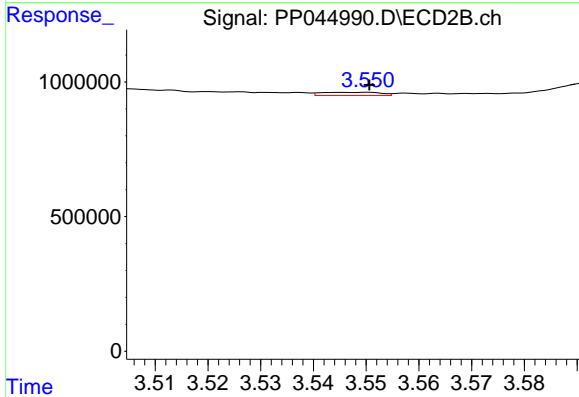
R.T.: 3.550 min
 Delta R.T.: 0.000 min
 Response: 91155
 Conc: 2.35 ng/ml



#11 AR-1232-1

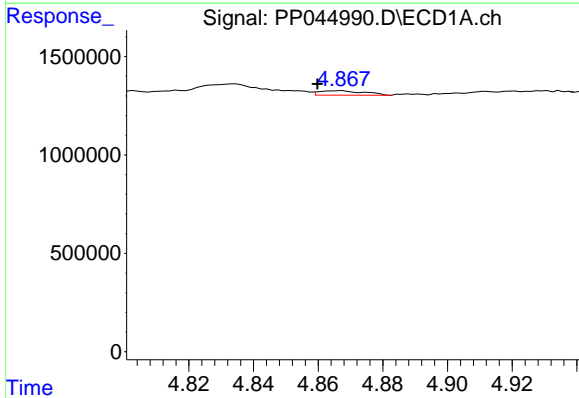
R.T.: 4.290 min
 Delta R.T.: -0.006 min
 Response: 89099
 Conc: 1.98 ng/ml

Instrument :
 ECD_P
 ClientSampleId :



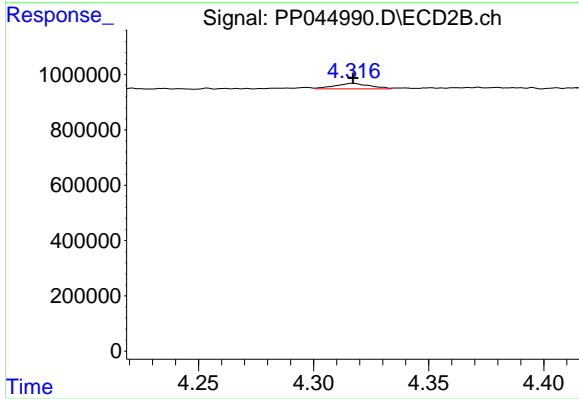
#11 AR-1232-1

R.T.: 3.550 min
 Delta R.T.: 0.000 min
 Response: 91155
 Conc: 2.54 ng/ml



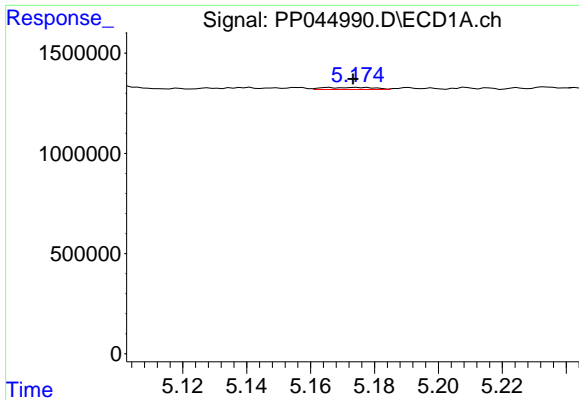
#12 AR-1232-2

R.T.: 4.867 min
 Delta R.T.: 0.007 min
 Response: 218808
 Conc: 10.41 ng/ml



#12 AR-1232-2

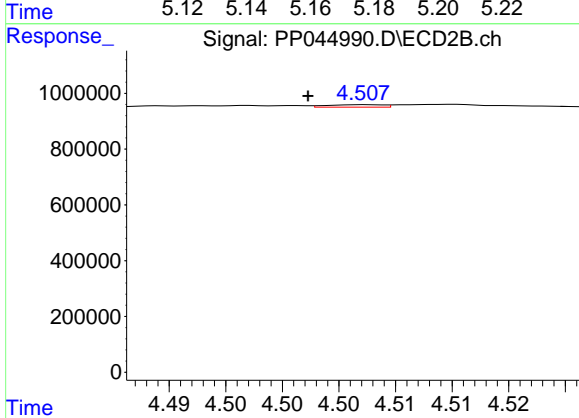
R.T.: 4.317 min
 Delta R.T.: 0.000 min
 Response: 211262
 Conc: 6.11 ng/ml



#13 AR-1232-3

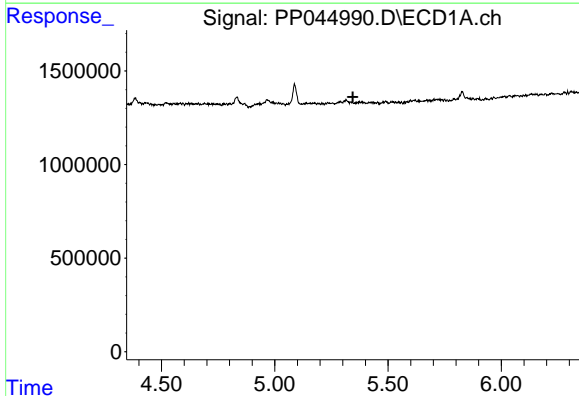
R.T.: 5.175 min
 Delta R.T.: 0.002 min
 Response: 115234
 Conc: 2.76 ng/ml

Instrument :
 ECD_P
 ClientSampleId :



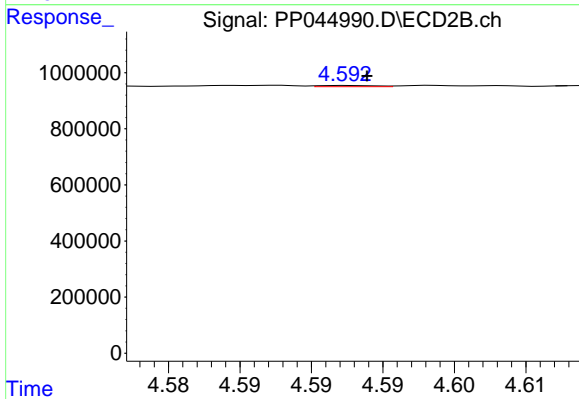
#13 AR-1232-3

R.T.: 4.507 min
 Delta R.T.: 0.005 min
 Response: 31030
 Conc: 1.66 ng/ml



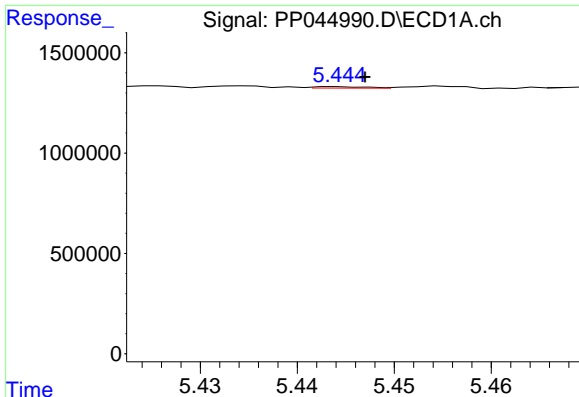
#14 AR-1232-4

R.T.: 5.335 min
 Delta R.T.: -0.010 min
 Response: -4371
 Conc: N.D.



#14 AR-1232-4

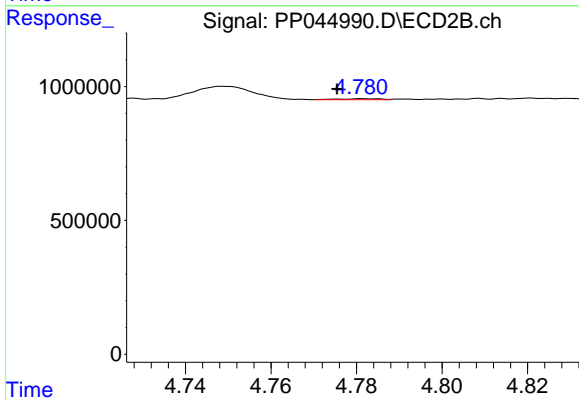
R.T.: 4.593 min
 Delta R.T.: -0.001 min
 Response: 11781
 Conc: 0.71 ng/ml



#15 AR-1232-5

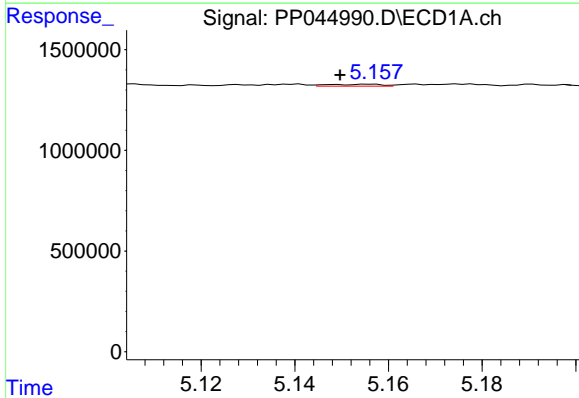
R.T.: 5.444 min
 Delta R.T.: -0.003 min
 Response: 27125
 Conc: 1.92 ng/ml

Instrument :
 ECD_P
 ClientSampleId :



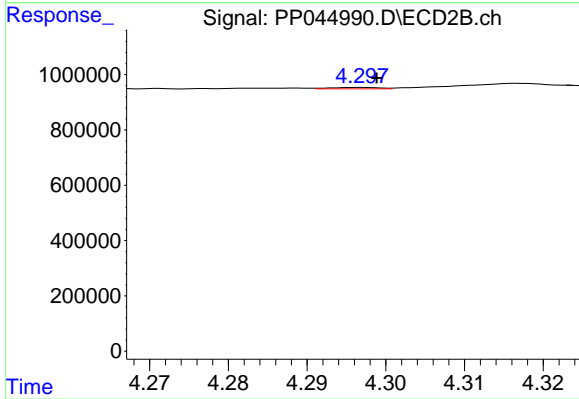
#15 AR-1232-5

R.T.: 4.781 min
 Delta R.T.: 0.006 min
 Response: 22847
 Conc: 1.24 ng/ml



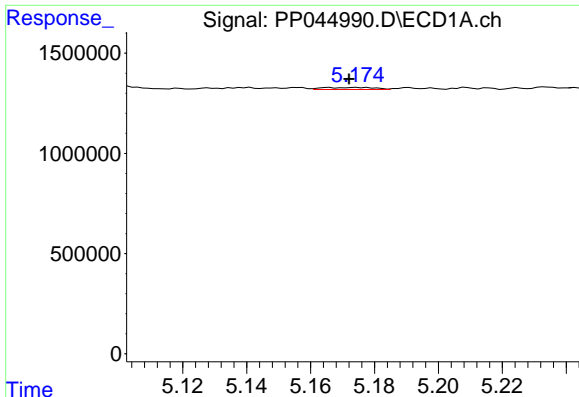
#16 AR-1242-1

R.T.: 5.156 min
 Delta R.T.: 0.007 min
 Response: 77531
 Conc: 1.69 ng/ml



#16 AR-1242-1

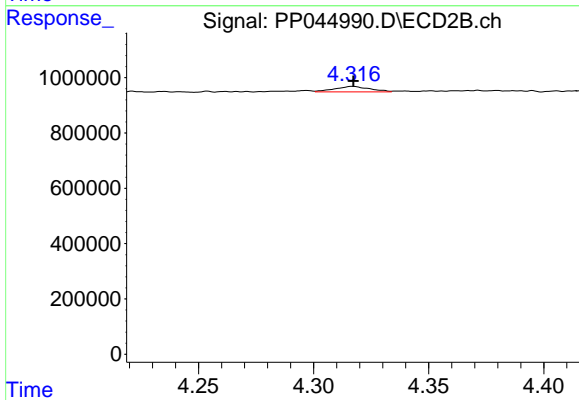
R.T.: 4.297 min
 Delta R.T.: -0.002 min
 Response: 21578
 Conc: 0.54 ng/ml



#17 AR-1242-2

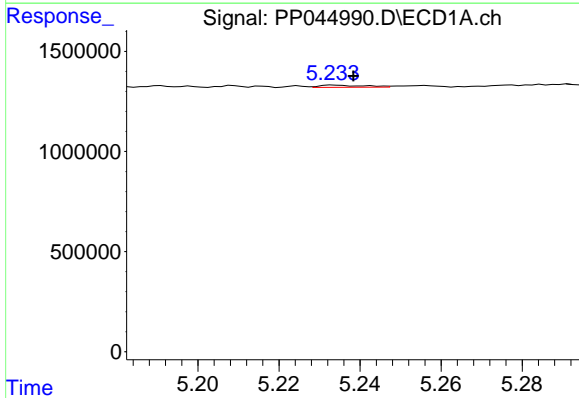
R.T.: 5.175 min
 Delta R.T.: 0.003 min
 Response: 115234
 Conc: 1.65 ng/ml

Instrument :
 ECD_P
 ClientSampleId :



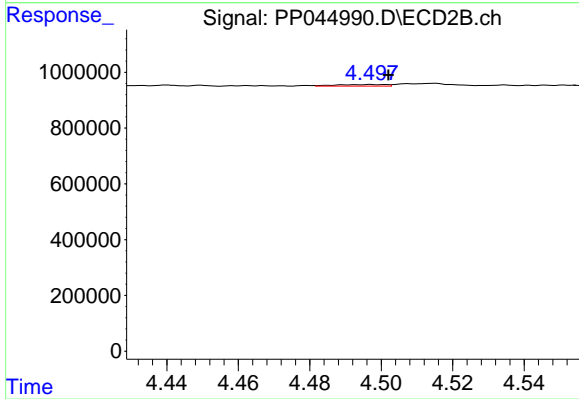
#17 AR-1242-2

R.T.: 4.317 min
 Delta R.T.: 0.000 min
 Response: 211262
 Conc: 3.72 ng/ml



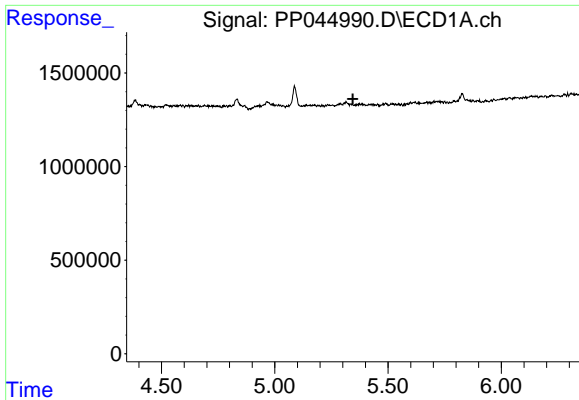
#18 AR-1242-3

R.T.: 5.234 min
 Delta R.T.: -0.005 min
 Response: 82197
 Conc: 2.00 ng/ml



#18 AR-1242-3

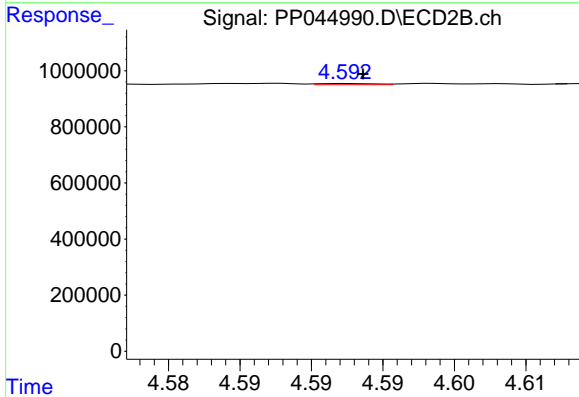
R.T.: 4.497 min
 Delta R.T.: -0.005 min
 Response: 56706
 Conc: 1.82 ng/ml



#19 AR-1242-4

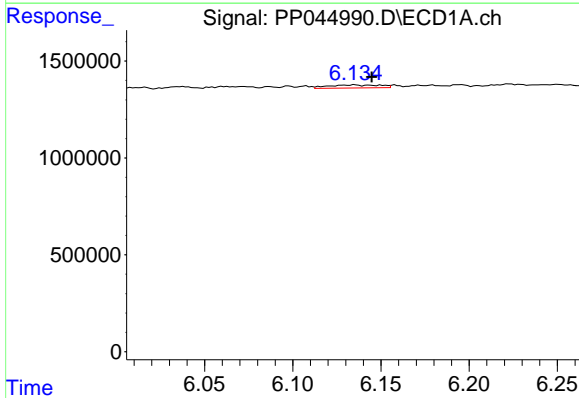
R.T.: 5.335 min
 Delta R.T.: -0.010 min
 Response: -4371
 Conc: N.D.

Instrument :
 ECD_P
 ClientSampleId :



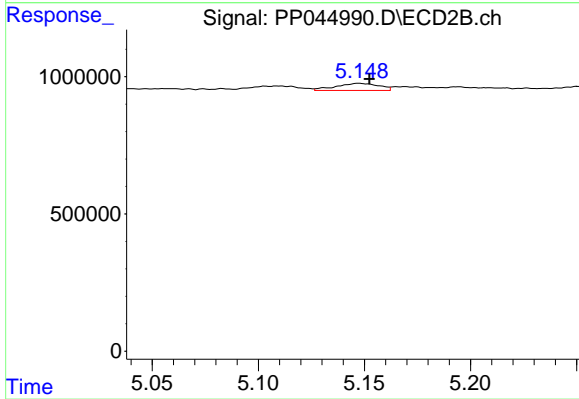
#19 AR-1242-4

R.T.: 4.593 min
 Delta R.T.: 0.000 min
 Response: 11781
 Conc: 0.39 ng/ml



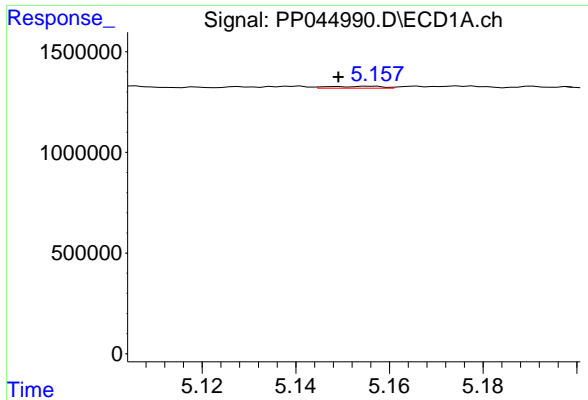
#20 AR-1242-5

R.T.: 6.135 min
 Delta R.T.: -0.009 min
 Response: 321983
 Conc: 8.81 ng/ml



#20 AR-1242-5

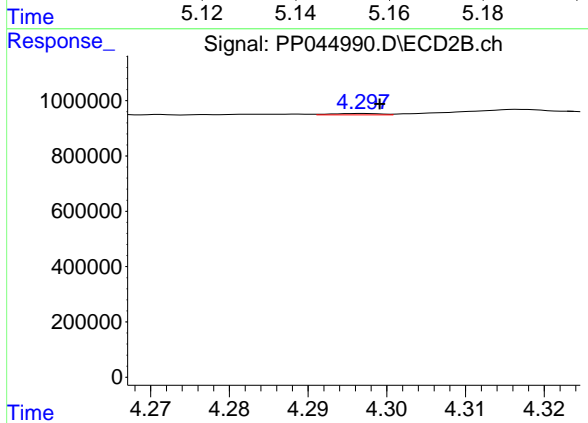
R.T.: 5.147 min
 Delta R.T.: -0.005 min
 Response: 361229
 Conc: 9.08 ng/ml



#21 AR-1248-1

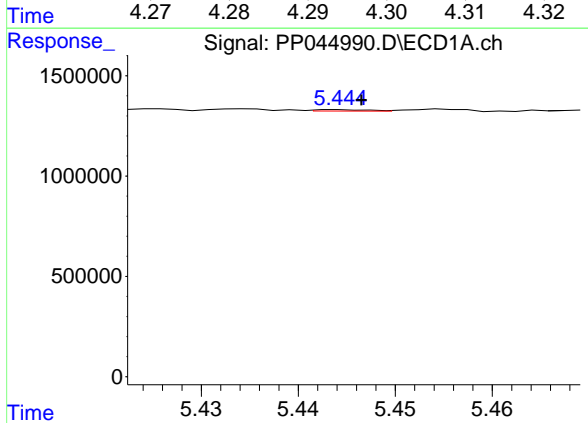
R.T.: 5.156 min
 Delta R.T.: 0.007 min
 Response: 77531
 Conc: 2.20 ng/ml

Instrument :
 ECD_P
 ClientSampleId :



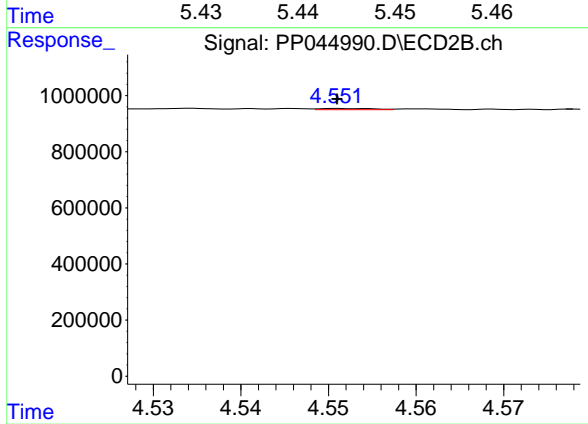
#21 AR-1248-1

R.T.: 4.297 min
 Delta R.T.: -0.002 min
 Response: 21578
 Conc: 0.68 ng/ml



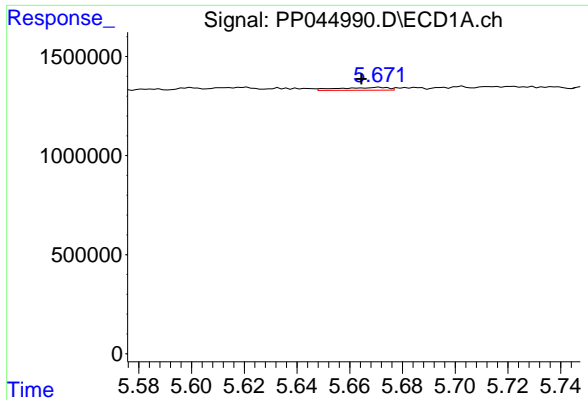
#22 AR-1248-2

R.T.: 5.444 min
 Delta R.T.: -0.002 min
 Response: 27125
 Conc: 0.57 ng/ml



#22 AR-1248-2

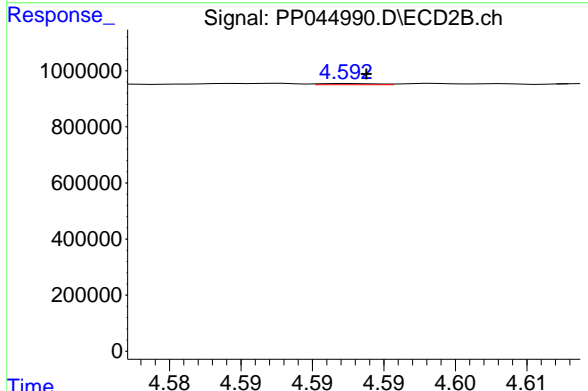
R.T.: 4.551 min
 Delta R.T.: 0.000 min
 Response: 18666
 Conc: 0.43 ng/ml



#23 AR-1248-3

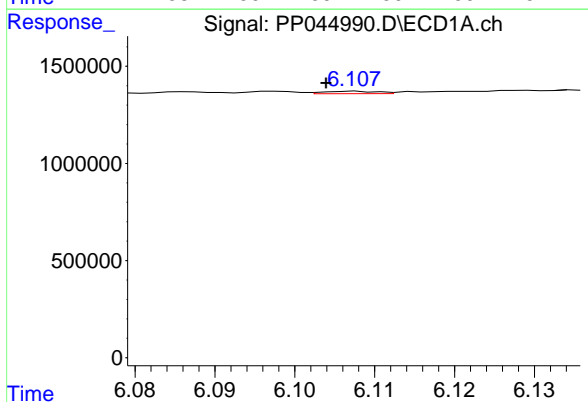
R.T.: 5.671 min
 Delta R.T.: 0.007 min
 Response: 182383
 Conc: 3.09 ng/ml

Instrument :
 ECD_P
 ClientSampleId :



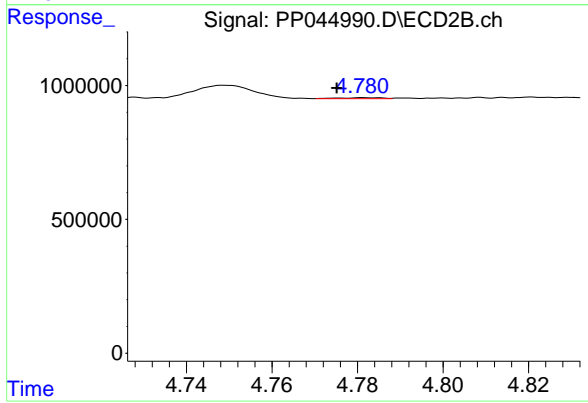
#23 AR-1248-3

R.T.: 4.593 min
 Delta R.T.: -0.001 min
 Response: 11781
 Conc: 0.26 ng/ml



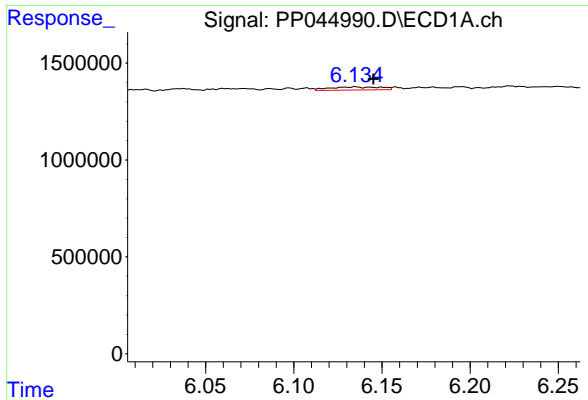
#24 AR-1248-4

R.T.: 6.107 min
 Delta R.T.: 0.004 min
 Response: 60504
 Conc: 0.95 ng/ml



#24 AR-1248-4

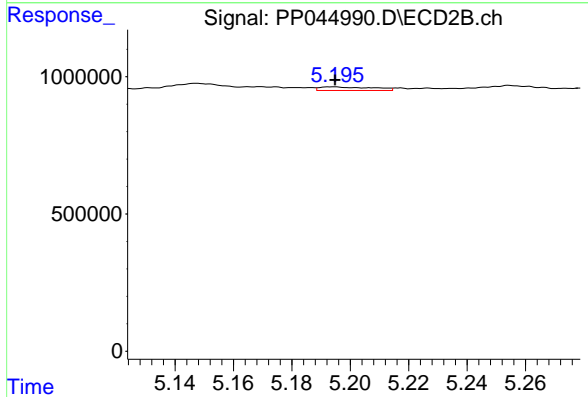
R.T.: 4.781 min
 Delta R.T.: 0.006 min
 Response: 22847
 Conc: 0.42 ng/ml



#25 AR-1248-5

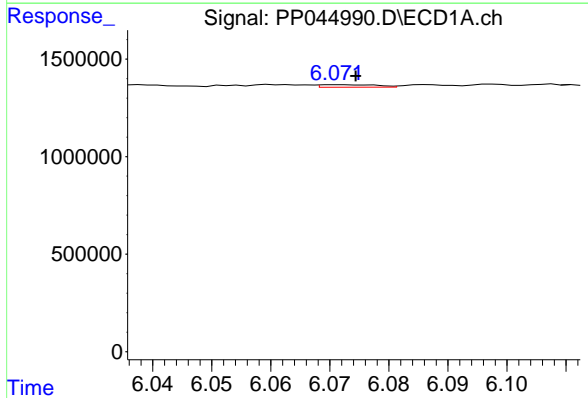
R.T.: 6.135 min
 Delta R.T.: -0.010 min
 Response: 321983
 Conc: 5.16 ng/ml

Instrument :
 ECD_P
 ClientSampleId :



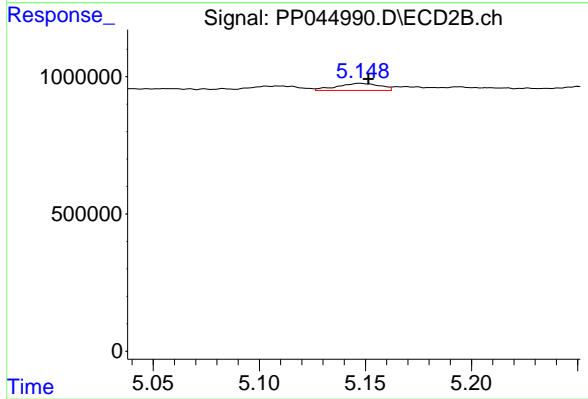
#25 AR-1248-5

R.T.: 5.195 min
 Delta R.T.: 0.000 min
 Response: 165562
 Conc: 2.95 ng/ml



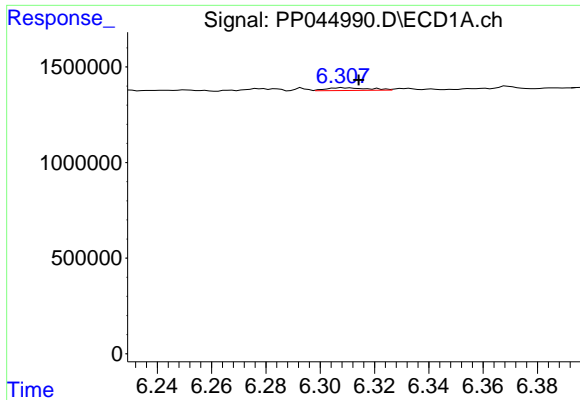
#26 AR-1254-1

R.T.: 6.072 min
 Delta R.T.: -0.003 min
 Response: 86346
 Conc: 1.30 ng/ml



#26 AR-1254-1

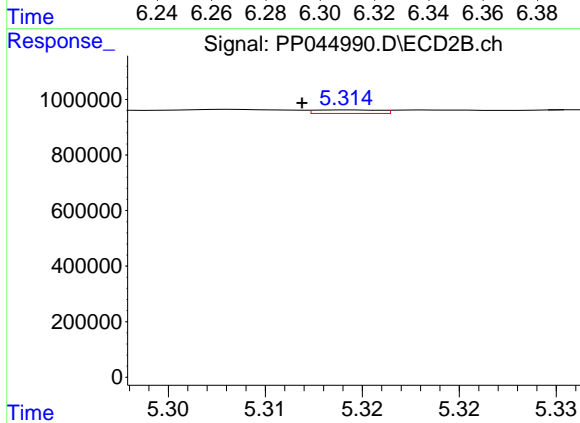
R.T.: 5.147 min
 Delta R.T.: -0.004 min
 Response: 361229
 Conc: 4.18 ng/ml



#27 AR-1254-2

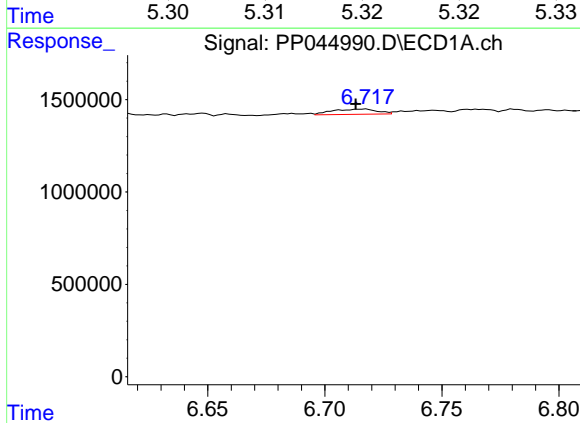
R.T.: 6.308 min
 Delta R.T.: -0.006 min
 Response: 154918
 Conc: 1.55 ng/ml

Instrument :
 ECD_P
 ClientSampleId :



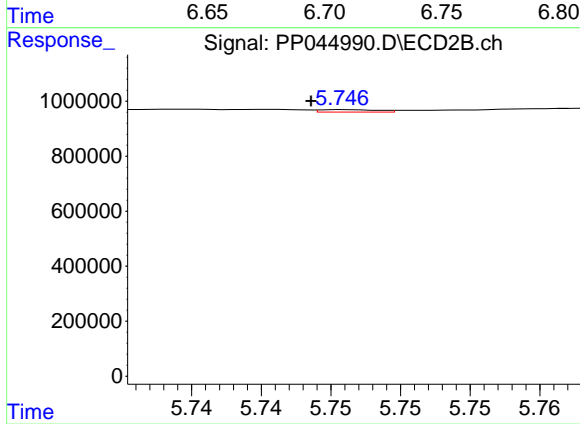
#27 AR-1254-2

R.T.: 5.314 min
 Delta R.T.: 0.003 min
 Response: 30455
 Conc: 0.41 ng/ml



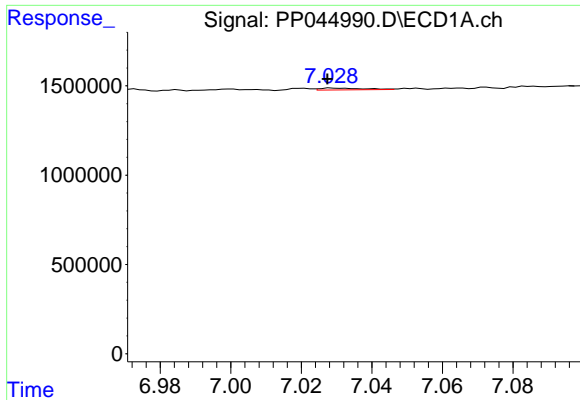
#28 AR-1254-3

R.T.: 6.717 min
 Delta R.T.: 0.004 min
 Response: 379669
 Conc: 3.71 ng/ml



#28 AR-1254-3

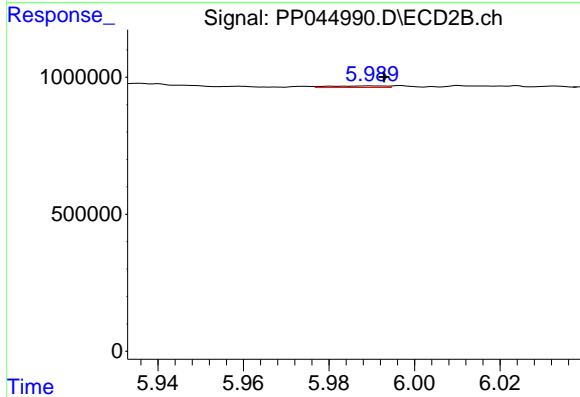
R.T.: 5.746 min
 Delta R.T.: 0.002 min
 Response: 26795
 Conc: 0.23 ng/ml



#29 AR-1254-4

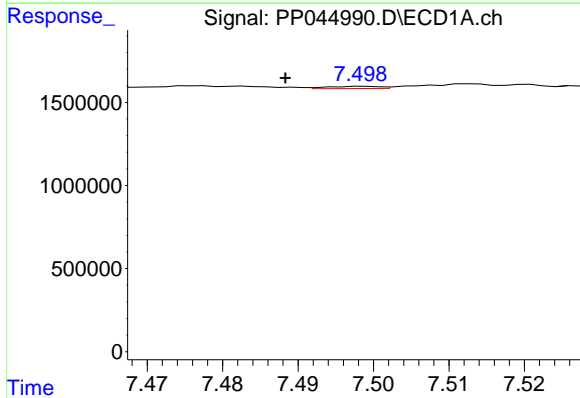
R.T.: 7.029 min
 Delta R.T.: 0.001 min
 Response: 84818
 Conc: 1.17 ng/ml

Instrument :
 ECD_P
 ClientSampleId :



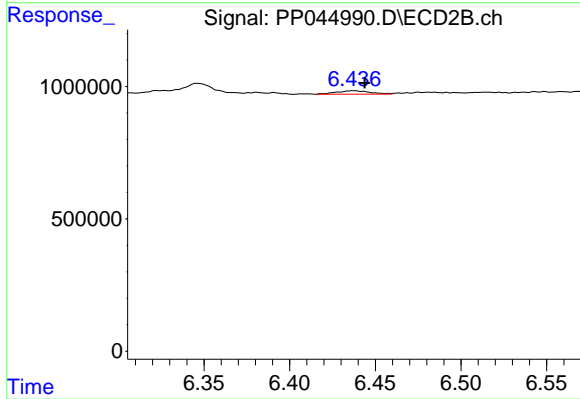
#29 AR-1254-4

R.T.: 5.990 min
 Delta R.T.: -0.003 min
 Response: 53637
 Conc: 0.72 ng/ml



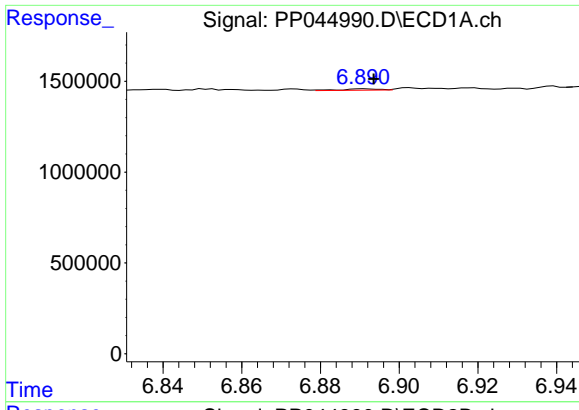
#30 AR-1254-5

R.T.: 7.499 min
 Delta R.T.: 0.011 min
 Response: 64464
 Conc: 0.83 ng/ml



#30 AR-1254-5

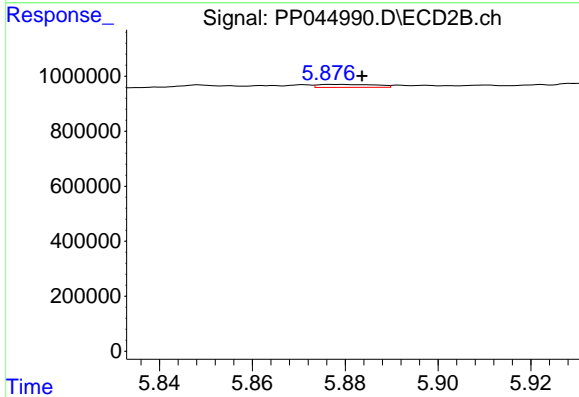
R.T.: 6.438 min
 Delta R.T.: -0.005 min
 Response: 180135
 Conc: 1.75 ng/ml



#31 AR-1260-1

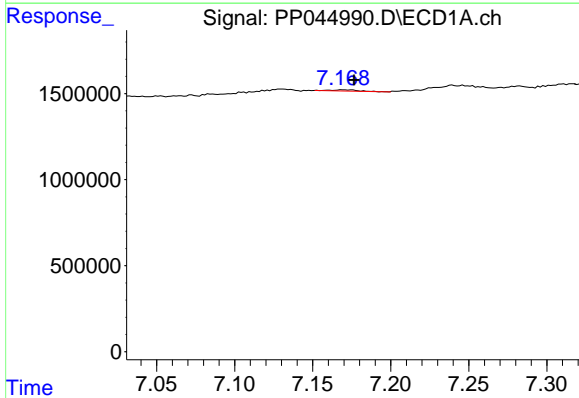
R.T.: 6.891 min
 Delta R.T.: -0.003 min
 Response: 52426
 Conc: 0.76 ng/ml

Instrument :
 ECD_P
 ClientSampleId :



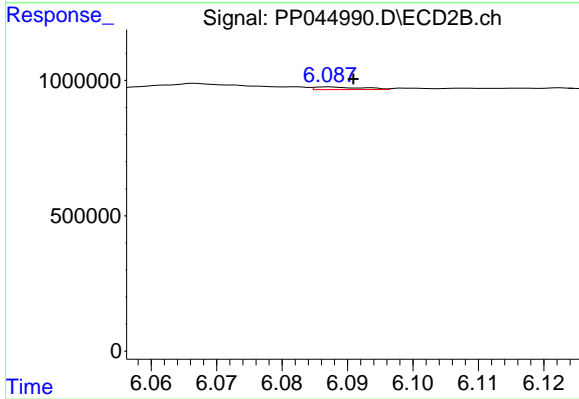
#31 AR-1260-1

R.T.: 5.879 min
 Delta R.T.: -0.004 min
 Response: 93801
 Conc: 1.33 ng/ml



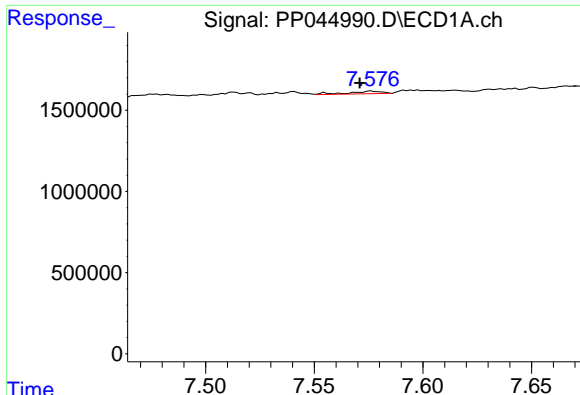
#32 AR-1260-2

R.T.: 7.169 min
 Delta R.T.: -0.008 min
 Response: 77520
 Conc: 1.00 ng/ml



#32 AR-1260-2

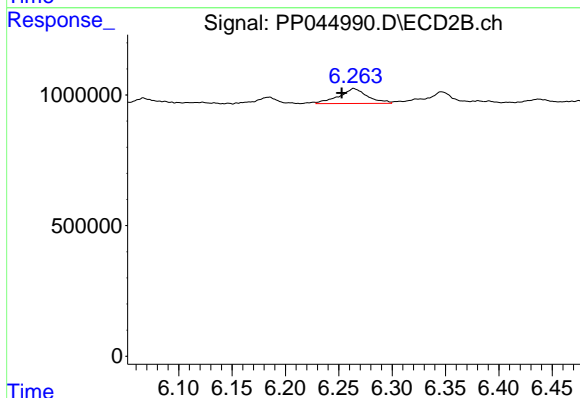
R.T.: 6.087 min
 Delta R.T.: -0.004 min
 Response: 47875
 Conc: 0.54 ng/ml



#33 AR-1260-3

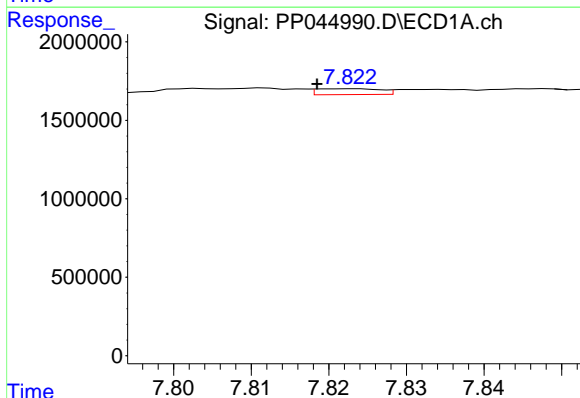
R.T.: 7.576 min
 Delta R.T.: 0.005 min
 Response: 165513
 Conc: 2.63 ng/ml

Instrument :
 ECD_P
 ClientSampleId :



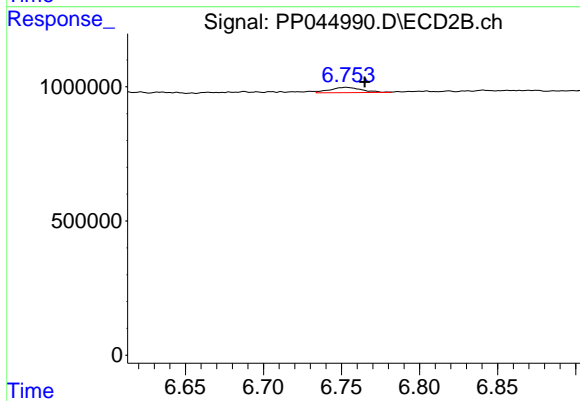
#33 AR-1260-3

R.T.: 6.264 min
 Delta R.T.: 0.011 min
 Response: 1063895
 Conc: 12.49 ng/ml



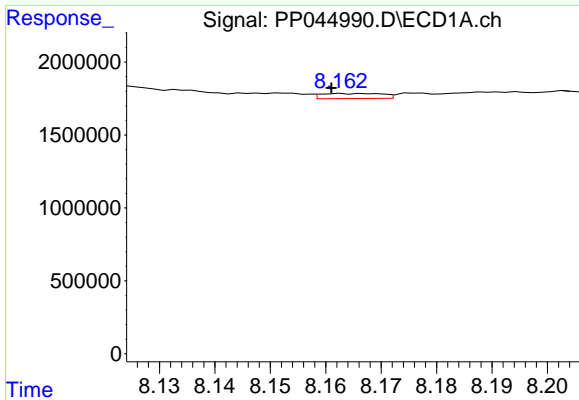
#34 AR-1260-4

R.T.: 7.823 min
 Delta R.T.: 0.005 min
 Response: 212743
 Conc: 2.90 ng/ml



#34 AR-1260-4

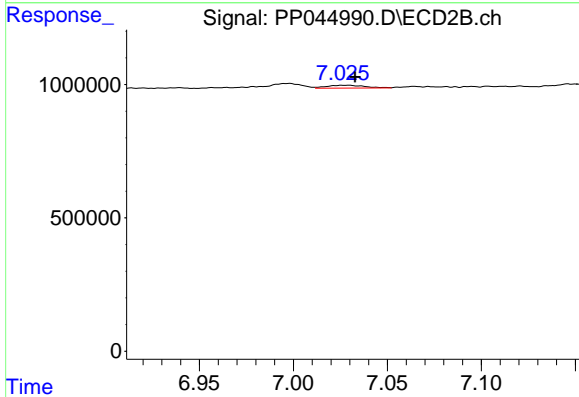
R.T.: 6.753 min
 Delta R.T.: -0.012 min
 Response: 284272
 Conc: 4.23 ng/ml



#35 AR-1260-5

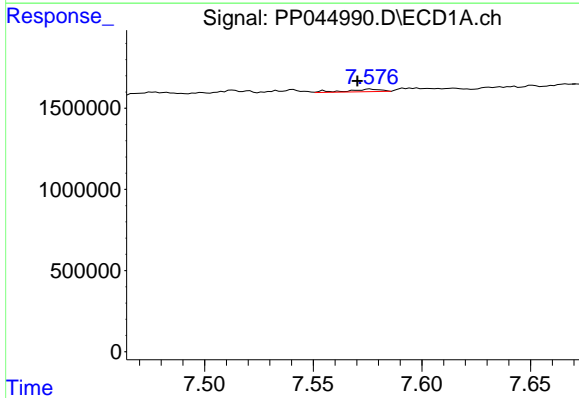
R.T.: 8.163 min
 Delta R.T.: 0.002 min
 Response: 266897
 Conc: 1.91 ng/ml

Instrument :
 ECD_P
 ClientSampleId :



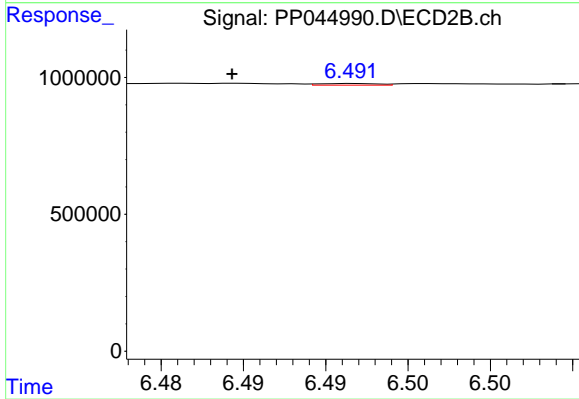
#35 AR-1260-5

R.T.: 7.030 min
 Delta R.T.: -0.003 min
 Response: 144401
 Conc: 0.92 ng/ml



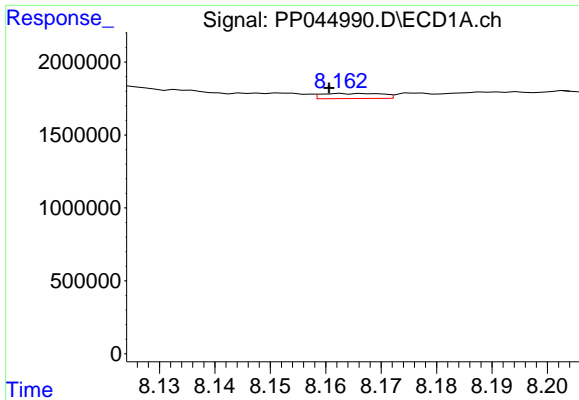
#36 AR-1262-1

R.T.: 7.576 min
 Delta R.T.: 0.006 min
 Response: 165513
 Conc: 1.75 ng/ml



#36 AR-1262-1

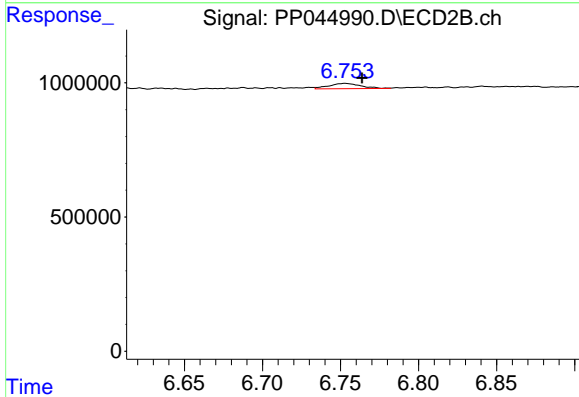
R.T.: 6.492 min
 Delta R.T.: 0.007 min
 Response: 14614
 Conc: 0.14 ng/ml



#37 AR-1262-2

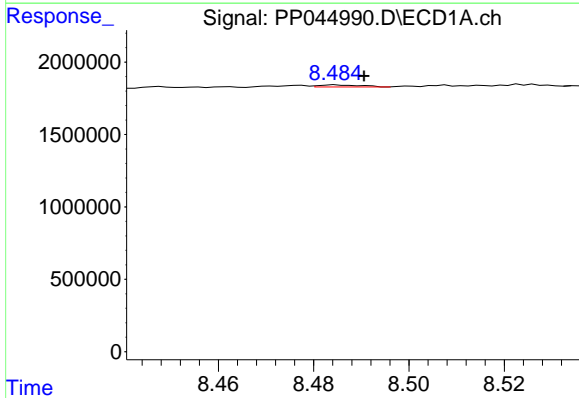
R.T.: 8.163 min
 Delta R.T.: 0.002 min
 Response: 266897
 Conc: 1.66 ng/ml

Instrument :
 ECD_P
 ClientSampleId :



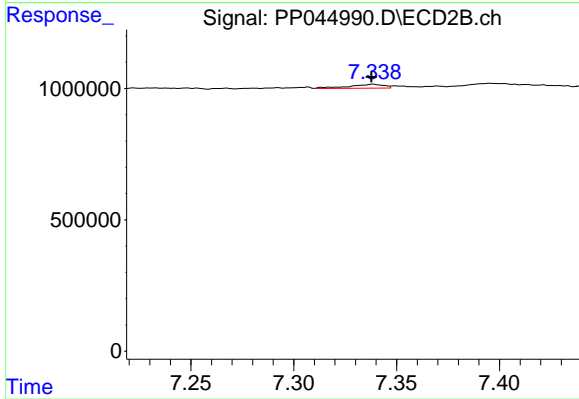
#37 AR-1262-2

R.T.: 6.753 min
 Delta R.T.: -0.011 min
 Response: 284272
 Conc: 3.08 ng/ml



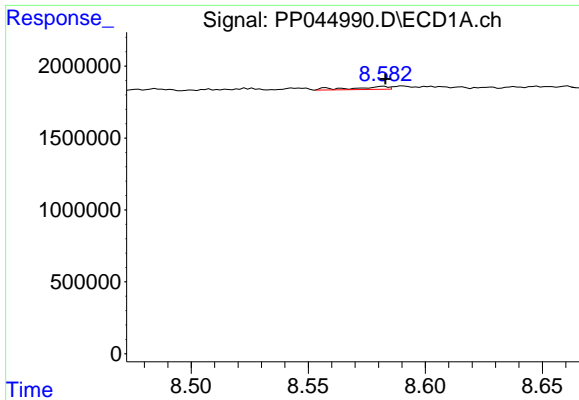
#38 AR-1262-3

R.T.: 8.485 min
 Delta R.T.: -0.006 min
 Response: 86380
 Conc: 0.80 ng/ml



#38 AR-1262-3

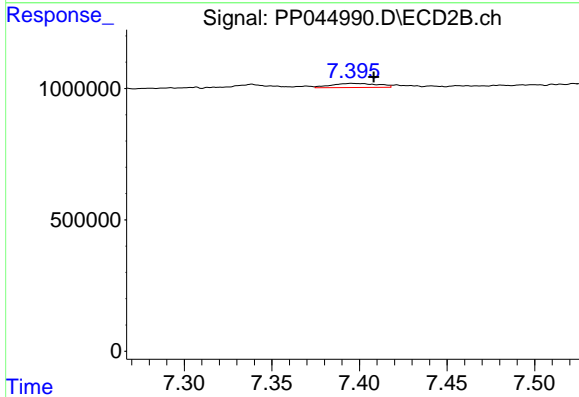
R.T.: 7.338 min
 Delta R.T.: 0.000 min
 Response: 178037
 Conc: 2.45 ng/ml



#39 AR-1262-4

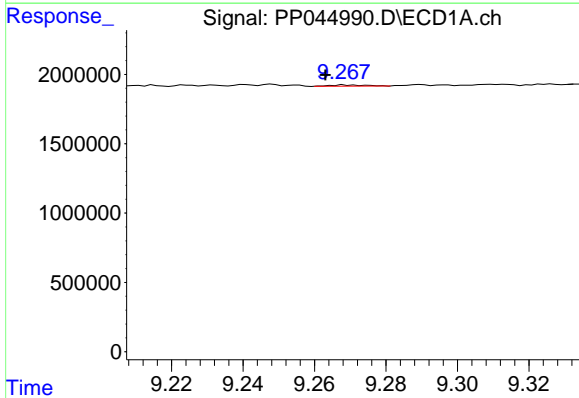
R.T.: 8.582 min
 Delta R.T.: 0.000 min
 Response: 219731
 Conc: 4.30 ng/ml

Instrument :
 ECD_P
 ClientSampleId :



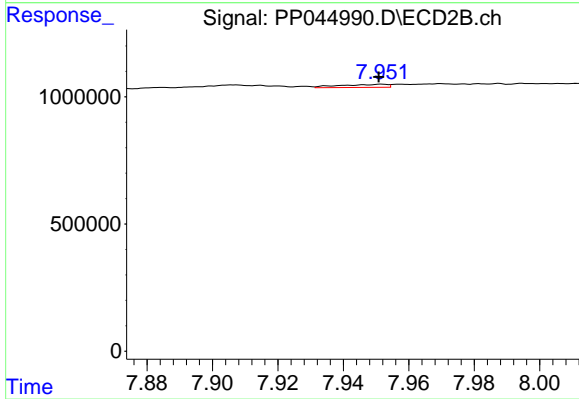
#39 AR-1262-4

R.T.: 7.396 min
 Delta R.T.: -0.013 min
 Response: 284423
 Conc: 2.12 ng/ml



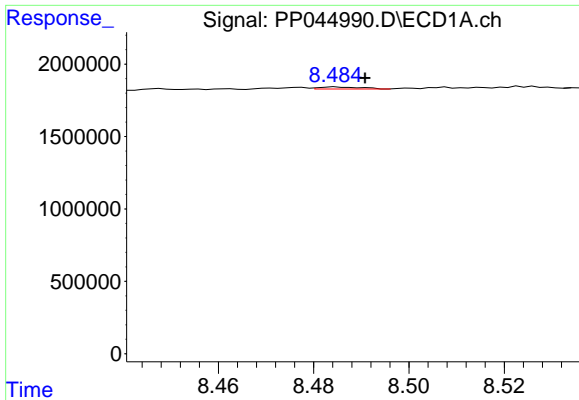
#40 AR-1262-5

R.T.: 9.268 min
 Delta R.T.: 0.005 min
 Response: 62361
 Conc: 1.12 ng/ml



#40 AR-1262-5

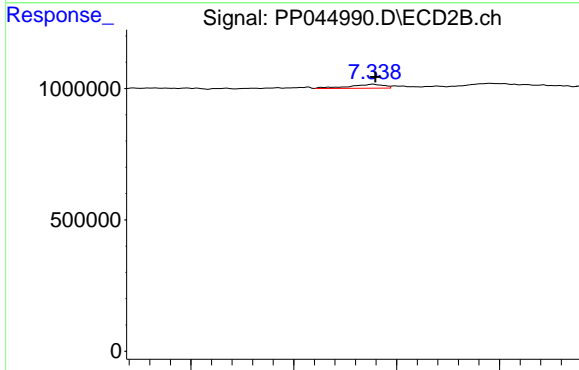
R.T.: 7.952 min
 Delta R.T.: 0.000 min
 Response: 118873
 Conc: 1.81 ng/ml



#41 AR-1268-1

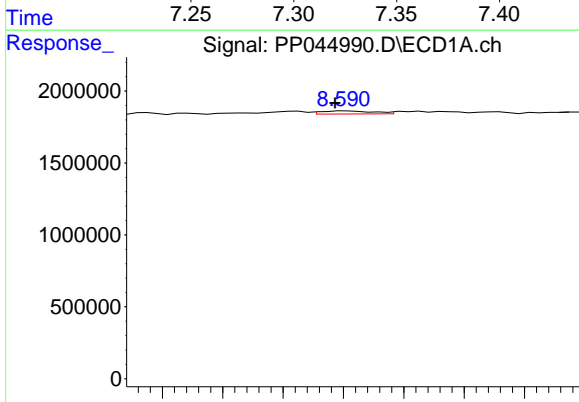
R.T.: 8.485 min
 Delta R.T.: -0.006 min
 Response: 86380
 Conc: 0.45 ng/ml

Instrument :
 ECD_P
 ClientSampleId :



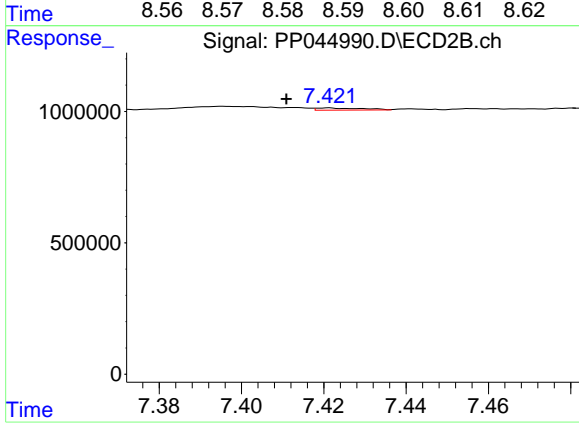
#41 AR-1268-1

R.T.: 7.338 min
 Delta R.T.: -0.001 min
 Response: 178037
 Conc: 0.83 ng/ml



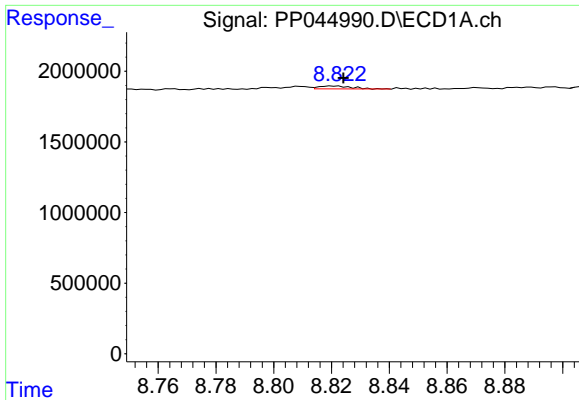
#42 AR-1268-2

R.T.: 8.590 min
 Delta R.T.: 0.002 min
 Response: 130254
 Conc: 0.75 ng/ml



#42 AR-1268-2

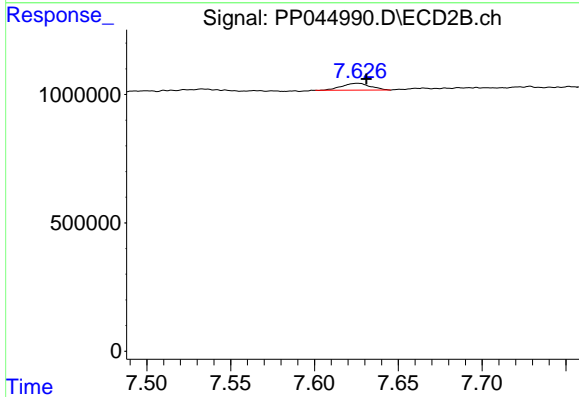
R.T.: 7.421 min
 Delta R.T.: 0.010 min
 Response: 62443
 Conc: 0.32 ng/ml



#43 AR-1268-3

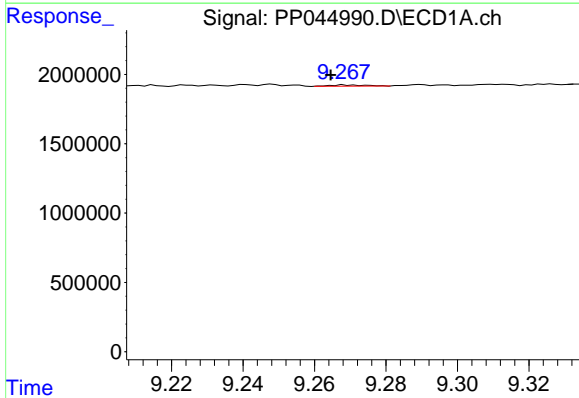
R.T.: 8.821 min
 Delta R.T.: -0.003 min
 Response: 161577
 Conc: 1.06 ng/ml

Instrument :
 ECD_P
 ClientSampleId :



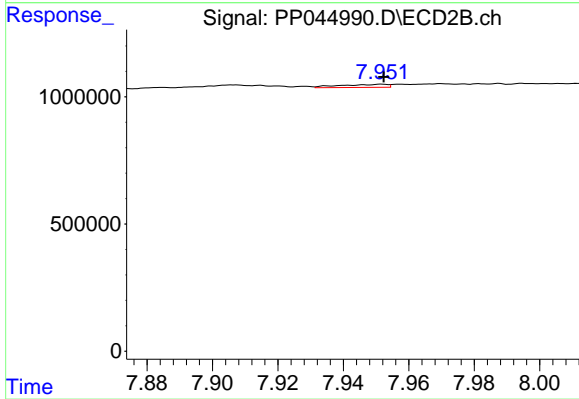
#43 AR-1268-3

R.T.: 7.626 min
 Delta R.T.: -0.005 min
 Response: 320148
 Conc: 1.94 ng/ml



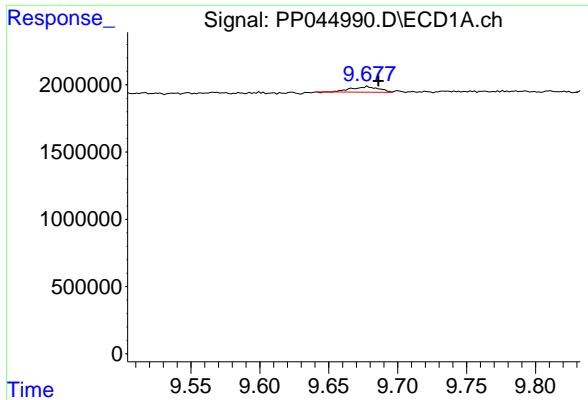
#44 AR-1268-4

R.T.: 9.268 min
 Delta R.T.: 0.004 min
 Response: 62361
 Conc: 1.00 ng/ml



#44 AR-1268-4

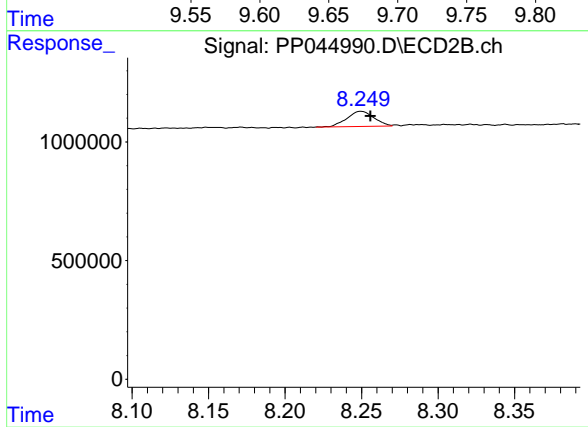
R.T.: 7.952 min
 Delta R.T.: 0.000 min
 Response: 118873
 Conc: 1.55 ng/ml



#45 AR-1268-5

R.T.: 9.678 min
Delta R.T.: -0.008 min
Response: 576906
Conc: 1.20 ng/ml

Instrument :
ECD_P
ClientSampleId :



#45 AR-1268-5

R.T.: 8.250 min
Delta R.T.: -0.006 min
Response: 782655
Conc: 1.52 ng/ml