

Data Path : Z:\pestpcbsrv\HPCHEM1\ECD_P\Data\PP032222\
 Data File : PP045008.D
 Signal(s) : Signal #1: ECD1A.ch Signal #2: ECD2B.ch
 Acq On : 23 Mar 2022 00:41
 Operator : YP\AJ
 Sample : N2031-04
 Misc :
 ALS Vial : 26 Sample Multiplier: 1

Instrument :
 ECD_P
 ClientSampleId :

Integration File signal 1: autoint1.e
 Integration File signal 2: autoint2.e
 Quant Time: Mar 23 05:09:26 2022
 Quant Method : Z:\pestpcbsrv\HPCHEM1\ECD_P\methods\PP031722.M
 Quant Title : GC EXTRACTABLES
 QLast Update : Thu Mar 17 04:32:40 2022
 Response via : Initial Calibration
 Integrator: ChemStation

Volume Inj. : 2 µl
 Signal #1 Phase : ZB-MR1 Signal #2 Phase: ZB-MR2
 Signal #1 Info : 30Mx0.32mmx 0.50µ Signal #2 Info : 30M x 0.32mm x 0.25µm

| Compound | RT#1 | RT#2 | Resp#1 | Resp#2 | ng/ml | ng/ml |
|-----------------------------|--------|-------|----------|----------|--------|----------|
| ----- | | | | | | |
| System Monitoring Compounds | | | | | | |
| 1) SA Tetrachlo... | 3.894 | 3.154 | 37017874 | 29712536 | 20.317 | 22.546 |
| 2) SA Decachlor... | 10.015 | 8.509 | 25802602 | 23728598 | 20.045 | 18.262 |
| Target Compounds | | | | | | |
| 3) L1 AR-1016-1 | 5.150 | 4.297 | 43121 | 7416 | 0.735 | 0.146 # |
| 4) L1 AR-1016-2 | 5.176 | 4.317 | 106533 | 213714 | 1.192 | 2.965 # |
| 5) L1 AR-1016-3 | 5.245 | 4.494 | 128000 | 42894 | 2.460 | 1.090 # |
| 7) L1 AR-1016-5 | 5.661 | 4.772 | 68062 | 74093 | 1.551 | 1.856 |
| 8) L2 AR-1221-1 | 4.142 | 3.376 | 79687 | 13983 | 3.883 | 0.942 # |
| 9) L2 AR-1221-2 | 4.237 | 3.466 | 76715 | 698573 | 5.018 | 56.387 # |
| 10) L2 AR-1221-3 | 4.310 | 3.553 | 58478 | 43838 | 1.211 | 1.129 |
| 11) L3 AR-1232-1 | 4.301 | 3.553 | 68993 | 43838 | 1.533 | 1.220 |
| 12) L3 AR-1232-2 | 4.867 | 4.317 | 189847 | 213714 | 9.035 | 6.180 # |
| 13) L3 AR-1232-3 | 5.176 | 4.494 | 106533 | 42894 | 2.554 | 2.290 |
| 15) L3 AR-1232-5 | 5.452 | 4.772 | 86204 | 74093 | 6.100 | 4.007 # |
| 16) L4 AR-1242-1 | 5.150 | 4.297 | 43121 | 7416 | 0.940 | 0.186 # |
| 17) L4 AR-1242-2 | 5.176 | 4.317 | 106533 | 213714 | 1.521 | 3.765 # |
| 18) L4 AR-1242-3 | 5.245 | 4.494 | 128000 | 42894 | 3.117 | 1.376 # |
| 20) L4 AR-1242-5 | 6.152 | 5.149 | 309506 | 615464 | 8.464 | 15.472 # |
| 21) L5 AR-1248-1 | 5.150 | 4.297 | 43121 | 7416 | 1.226 | 0.235 # |
| 22) L5 AR-1248-2 | 5.452 | 4.556 | 86204 | 11956 | 1.822 | 0.273 # |
| 23) L5 AR-1248-3 | 5.661 | 4.596 | 68062 | 22232 | 1.152 | 0.487 # |
| 24) L5 AR-1248-4 | 6.100 | 4.772 | 121701 | 74093 | 1.918 | 1.372 # |
| 25) L5 AR-1248-5 | 6.152 | 5.194 | 309506 | 171333 | 4.960 | 3.052 # |
| 26) L6 AR-1254-1 | 6.068 | 5.149 | 200054 | 615464 | 3.013 | 7.117 # |
| 27) L6 AR-1254-2 | 6.316 | 5.305 | 118977 | 470086 | 1.191 | 6.317 # |
| 28) L6 AR-1254-3 | 6.709 | 5.739 | 212687 | 217754 | 2.079 | 1.895 |
| 29) L6 AR-1254-4 | 0.000 | 5.997 | 0 | 13142 | N.D. | 0.176 # |
| 30) L6 AR-1254-5 | 7.483 | 6.438 | 722023 | 1087392 | 9.335 | 10.560 |
| 31) L7 AR-1260-1 | 6.902 | 5.879 | 57922 | 605054 | 0.841 | 8.593 # |
| 32) L7 AR-1260-2 | 7.165 | 6.087 | 519636 | 524549 | 6.693 | 5.866 |
| 33) L7 AR-1260-3 | 7.566 | 6.249 | 257162 | 601601 | 4.087 | 7.064 # |
| 34) L7 AR-1260-4 | 7.813 | 6.758 | 1074089 | 641595 | 14.642 | 9.547 # |
| 35) L7 AR-1260-5 | 8.155 | 7.028 | 1481751 | 1580167 | 10.581 | 10.113 |
| 36) L8 AR-1262-1 | 7.566 | 6.479 | 257162 | 539246 | 2.712 | 5.238 # |
| 37) L8 AR-1262-2 | 8.155 | 6.758 | 1481751 | 641595 | 9.208 | 6.951 |
| 38) L8 AR-1262-3 | 8.492 | 7.334 | 511478 | 457104 | 4.742 | 6.281 # |
| 39) L8 AR-1262-4 | 8.590 | 7.402 | 674480 | 818101 | 13.187 | 6.087 # |
| 40) L8 AR-1262-5 | 9.256 | 7.946 | 313513 | 530942 | 5.609 | 8.065 # |
| 41) L9 AR-1268-1 | 8.492 | 7.334 | 511478 | 457104 | 2.657 | 2.118 |
| 42) L9 AR-1268-2 | 8.590 | 7.402 | 674480 | 818101 | 3.863 | 4.184 |
| 43) L9 AR-1268-3 | 8.819 | 7.624 | 244242 | 452033 | 1.599 | 2.744 # |
| 44) L9 AR-1268-4 | 9.256 | 7.946 | 313513 | 530942 | 5.009 | 6.932 # |

Data Path : Z:\pestpcbsrv\HPCHEM1\ECD_P\Data\PP032222\
 Data File : PP045008.D
 Signal(s) : Signal #1: ECD1A.ch Signal #2: ECD2B.ch
 Acq On : 23 Mar 2022 00:41
 Operator : YP\AJ
 Sample : N2031-04
 Misc :
 ALS Vial : 26 Sample Multiplier: 1

Instrument :
 ECD_P
 ClientSampleId :

Integration File signal 1: autoint1.e
 Integration File signal 2: autoint2.e
 Quant Time: Mar 23 05:09:26 2022
 Quant Method : Z:\pestpcbsrv\HPCHEM1\ECD_P\methods\PP031722.M
 Quant Title : GC EXTRACTABLES
 QLast Update : Thu Mar 17 04:32:40 2022
 Response via : Initial Calibration
 Integrator: ChemStation

Volume Inj. : 2 µl
 Signal #1 Phase : ZB-MR1 Signal #2 Phase: ZB-MR2
 Signal #1 Info : 30Mx0.32mmx 0.50µ Signal #2 Info : 30M x 0.32mm x 0.25µm

| | Compound | RT#1 | RT#2 | Resp#1 | Resp#2 | ng/ml | ng/ml |
|-----|--------------|-------|-------|---------|--------|-------|---------|
| 45) | L9 AR-1268-5 | 9.677 | 8.250 | 1239818 | 804040 | 2.573 | 1.560 # |

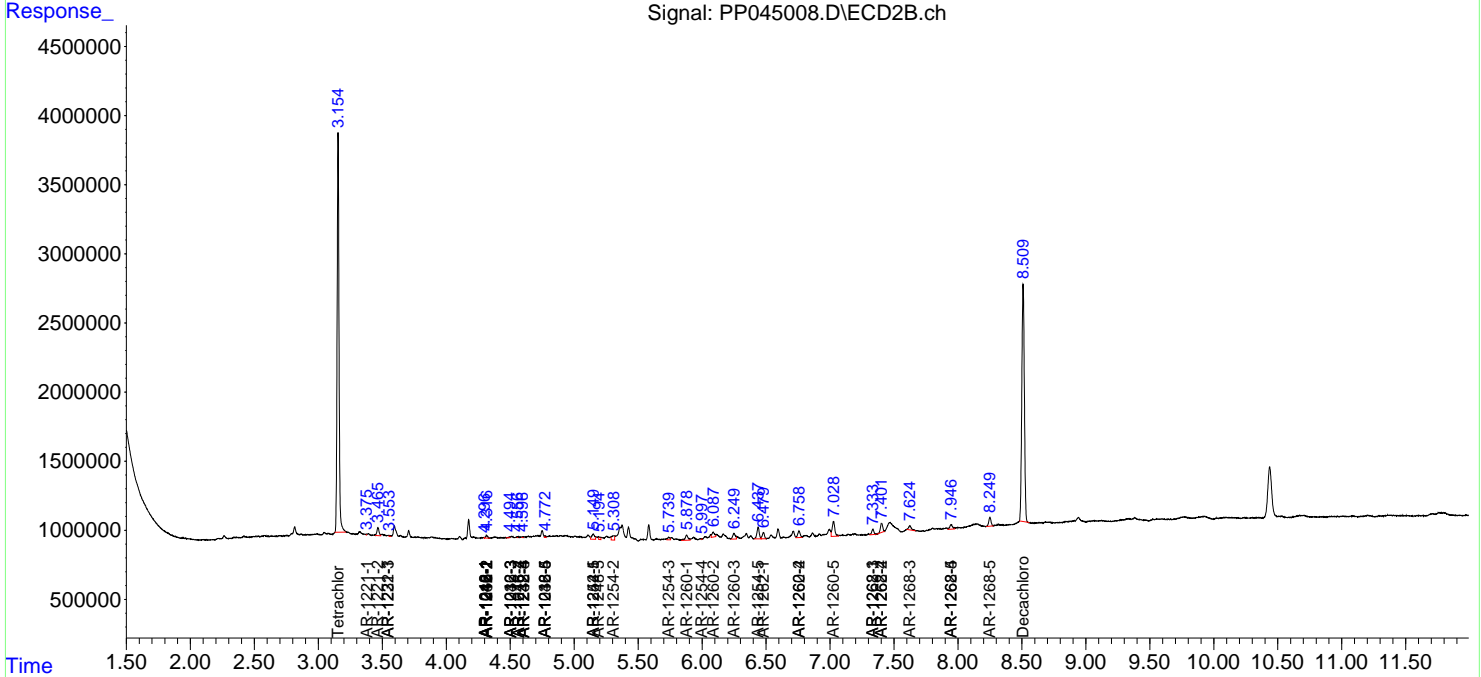
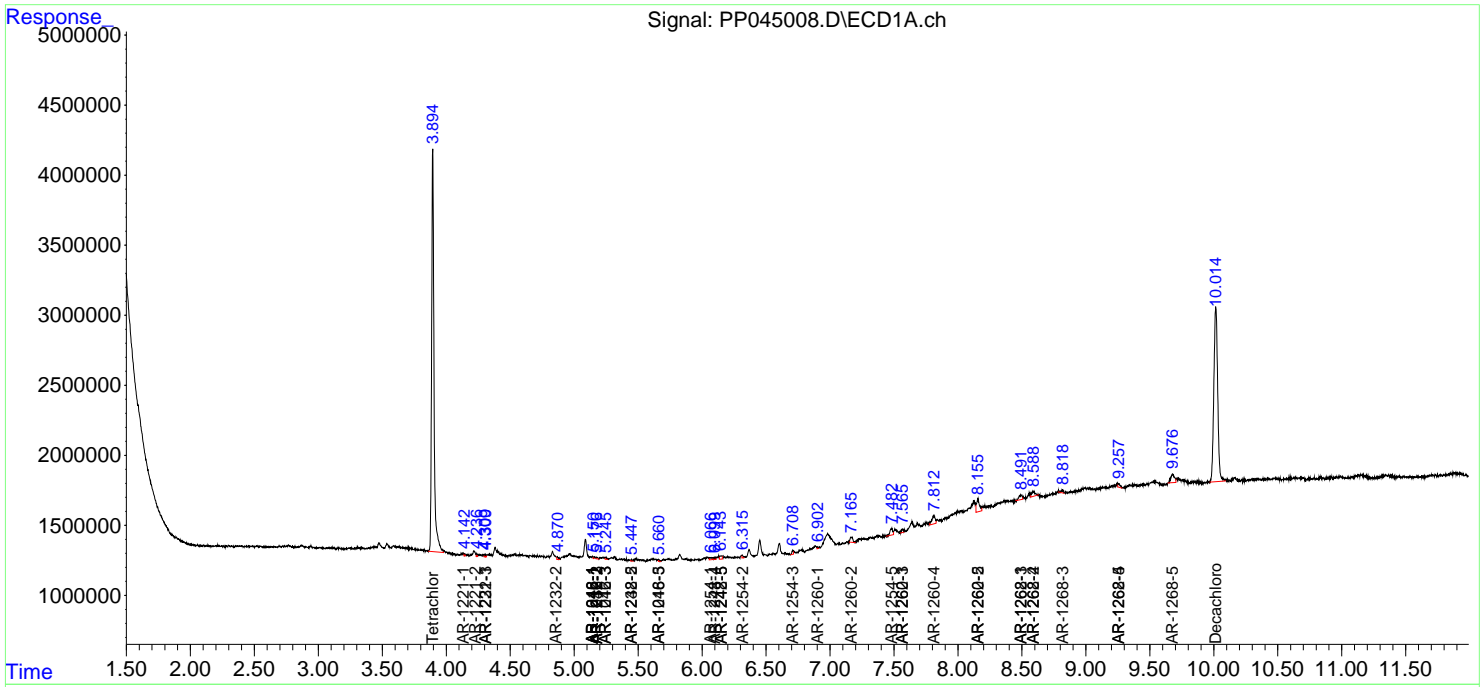
(f)=RT Delta > 1/2 Window (#)=Amounts differ by > 25% (m)=manual int.

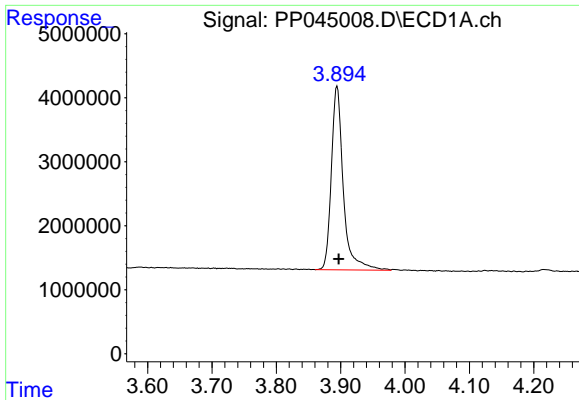
Data Path : Z:\pestpcbsrv\HPCHEM1\ECD_P\Data\PP032222\
 Data File : PP045008.D
 Signal(s) : Signal #1: ECD1A.ch Signal #2: ECD2B.ch
 Acq On : 23 Mar 2022 00:41
 Operator : YP\AJ
 Sample : N2031-04
 Misc :
 ALS Vial : 26 Sample Multiplier: 1

Instrument :
 ECD_P
 ClientSampleId :

Integration File signal 1: autoint1.e
 Integration File signal 2: autoint2.e
 Quant Time: Mar 23 05:09:26 2022
 Quant Method : Z:\pestpcbsrv\HPCHEM1\ECD_P\methods\PP031722.M
 Quant Title : GC EXTRACTABLES
 QLast Update : Thu Mar 17 04:32:40 2022
 Response via : Initial Calibration
 Integrator: ChemStation

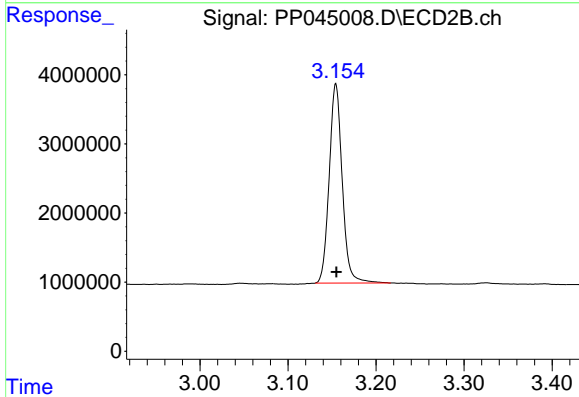
Volume Inj. : 2 µl
 Signal #1 Phase : ZB-MR1 Signal #2 Phase: ZB-MR2
 Signal #1 Info : 30Mx0.32mmx 0.50µ Signal #2 Info : 30M x 0.32mm x 0.25µm



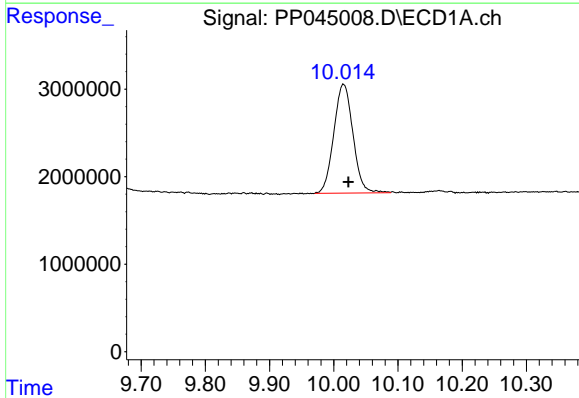


#1 Tetrachloro-m-xylene
 R.T.: 3.894 min
 Delta R.T.: -0.003 min
 Response: 37017874
 Conc: 20.32 ng/ml

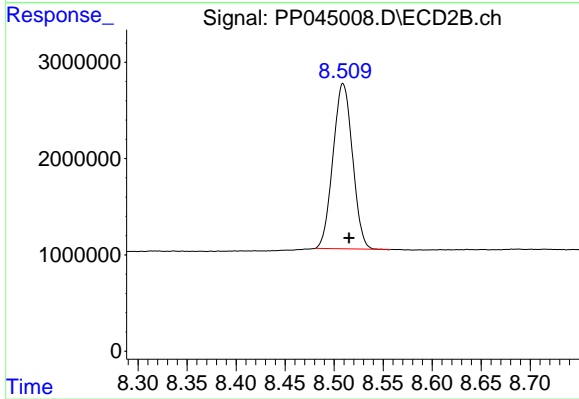
Instrument :
 ECD_P
 ClientSampleId :



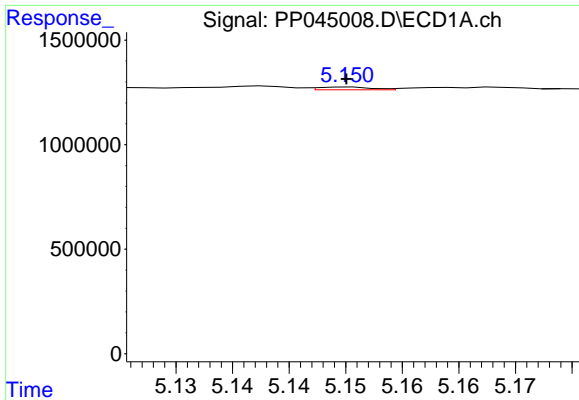
#1 Tetrachloro-m-xylene
 R.T.: 3.154 min
 Delta R.T.: 0.000 min
 Response: 29712536
 Conc: 22.55 ng/ml



#2 Decachlorobiphenyl
 R.T.: 10.015 min
 Delta R.T.: -0.008 min
 Response: 25802602
 Conc: 20.04 ng/ml



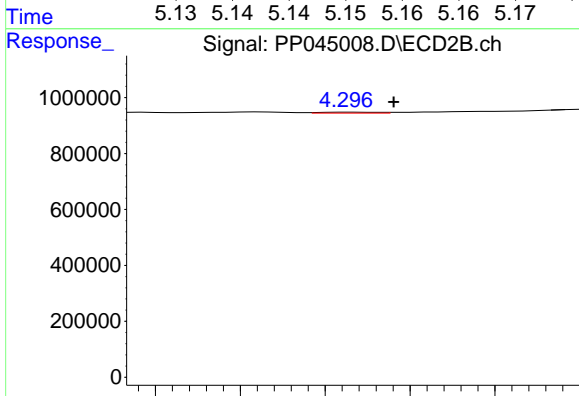
#2 Decachlorobiphenyl
 R.T.: 8.509 min
 Delta R.T.: -0.006 min
 Response: 23728598
 Conc: 18.26 ng/ml



#3 AR-1016-1

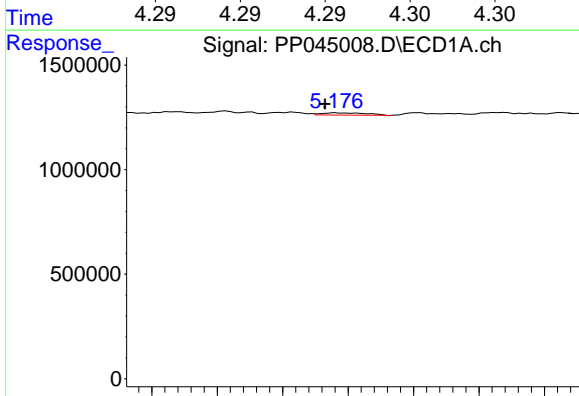
R.T.: 5.150 min
 Delta R.T.: 0.000 min
 Response: 43121
 Conc: 0.73 ng/ml

Instrument :
 ECD_P
 ClientSampleId :



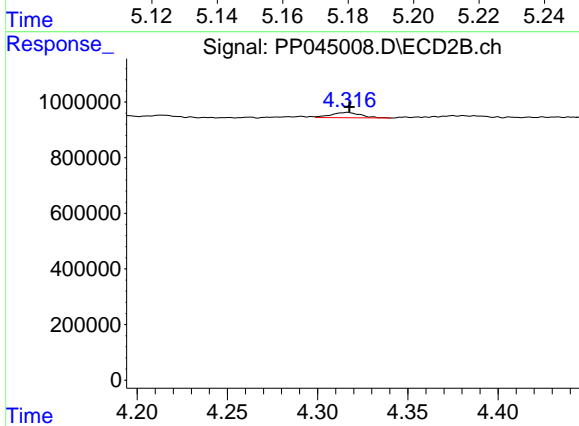
#3 AR-1016-1

R.T.: 4.297 min
 Delta R.T.: -0.002 min
 Response: 7416
 Conc: 0.15 ng/ml



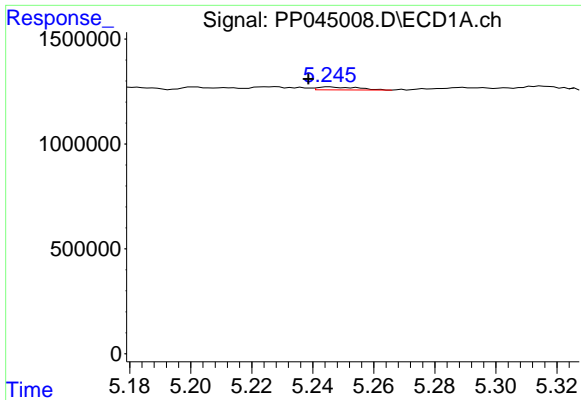
#4 AR-1016-2

R.T.: 5.176 min
 Delta R.T.: 0.003 min
 Response: 106533
 Conc: 1.19 ng/ml



#4 AR-1016-2

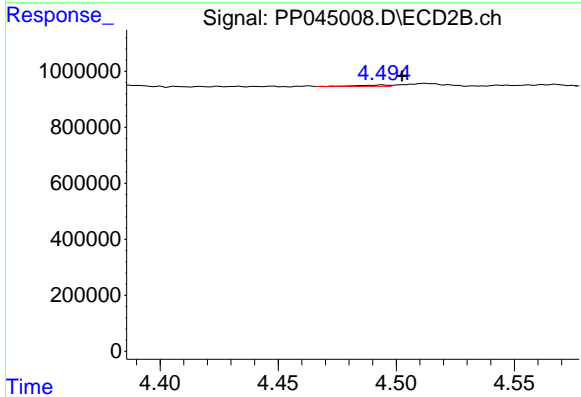
R.T.: 4.317 min
 Delta R.T.: 0.000 min
 Response: 213714
 Conc: 2.96 ng/ml



#5 AR-1016-3

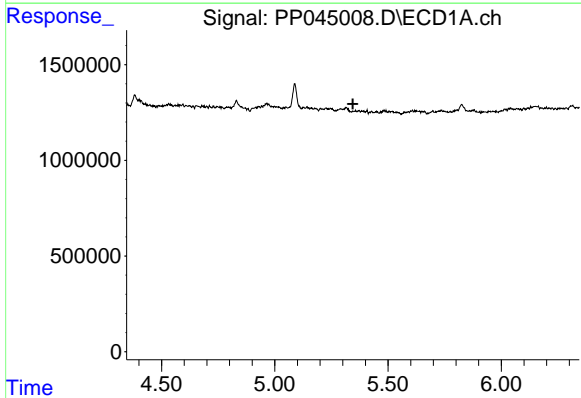
R.T.: 5.245 min
 Delta R.T.: 0.007 min
 Response: 128000
 Conc: 2.46 ng/ml

Instrument :
 ECD_P
 ClientSampleId :



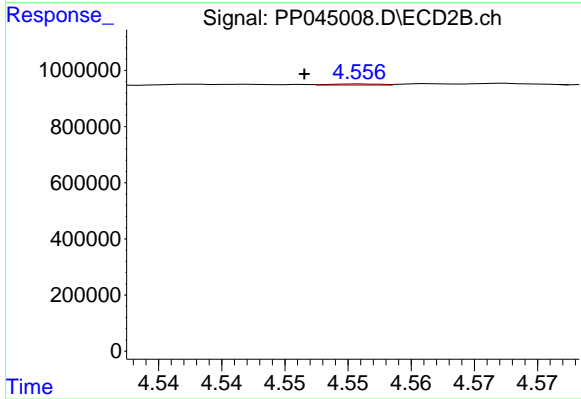
#5 AR-1016-3

R.T.: 4.494 min
 Delta R.T.: -0.009 min
 Response: 42894
 Conc: 1.09 ng/ml



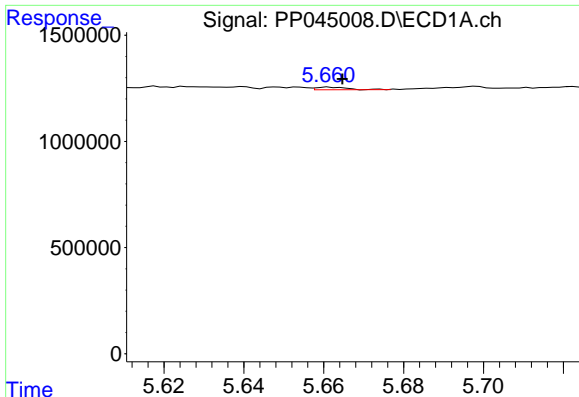
#6 AR-1016-4

R.T.: 5.357 min
 Delta R.T.: 0.013 min
 Response: -63218
 Conc: N.D.



#6 AR-1016-4

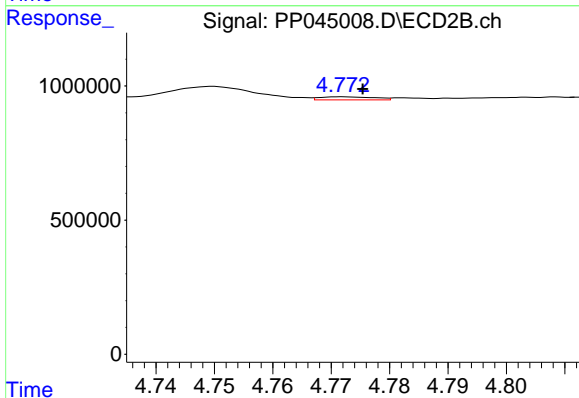
R.T.: 4.556 min
 Delta R.T.: 0.004 min
 Response: 11956
 Conc: 0.38 ng/ml



#7 AR-1016-5

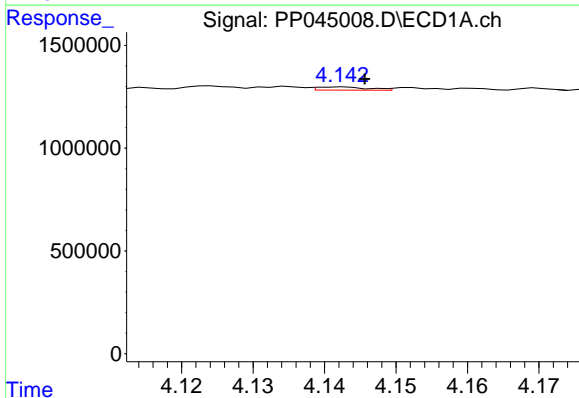
R.T.: 5.661 min
 Delta R.T.: -0.003 min
 Response: 68062
 Conc: 1.55 ng/ml

Instrument :
 ECD_P
 ClientSampleId :



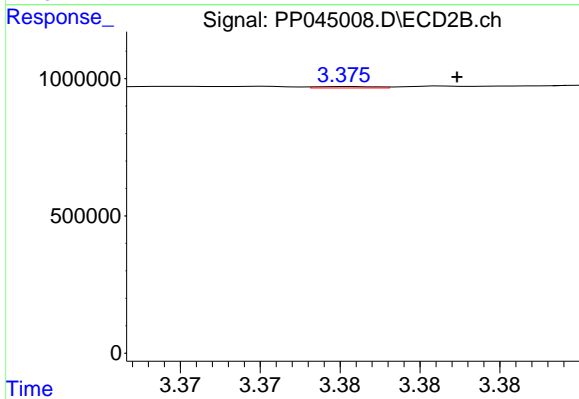
#7 AR-1016-5

R.T.: 4.772 min
 Delta R.T.: -0.004 min
 Response: 74093
 Conc: 1.86 ng/ml



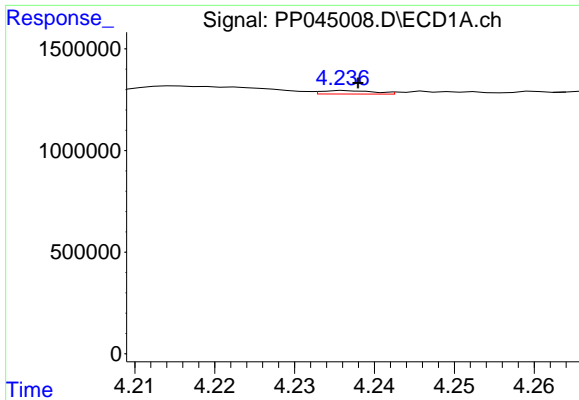
#8 AR-1221-1

R.T.: 4.142 min
 Delta R.T.: -0.004 min
 Response: 79687
 Conc: 3.88 ng/ml



#8 AR-1221-1

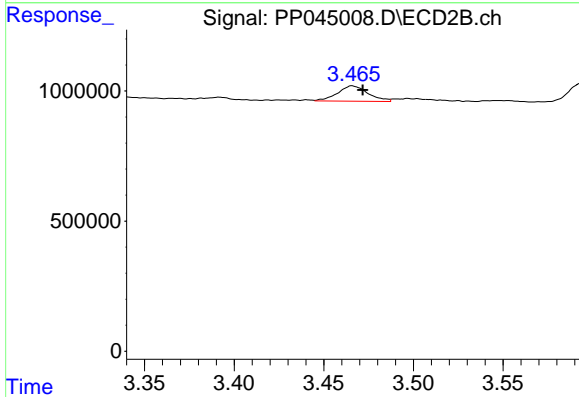
R.T.: 3.376 min
 Delta R.T.: -0.007 min
 Response: 13983
 Conc: 0.94 ng/ml



#9 AR-1221-2

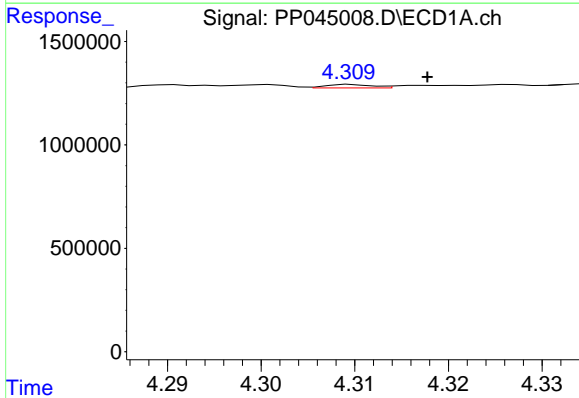
R.T.: 4.237 min
 Delta R.T.: -0.001 min
 Response: 76715
 Conc: 5.02 ng/ml

Instrument :
 ECD_P
 ClientSampleId :



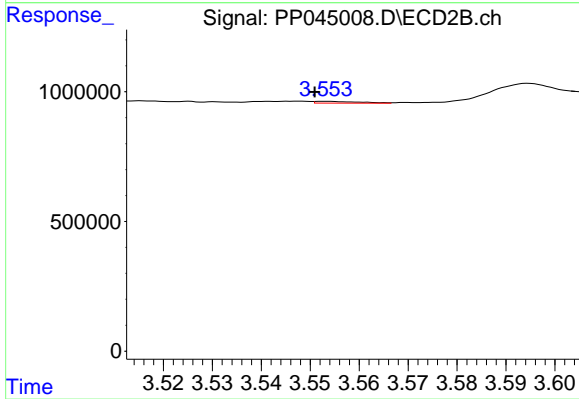
#9 AR-1221-2

R.T.: 3.466 min
 Delta R.T.: -0.006 min
 Response: 698573
 Conc: 56.39 ng/ml



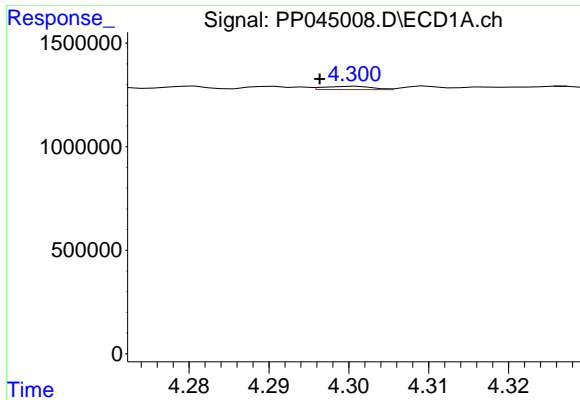
#10 AR-1221-3

R.T.: 4.310 min
 Delta R.T.: -0.008 min
 Response: 58478
 Conc: 1.21 ng/ml



#10 AR-1221-3

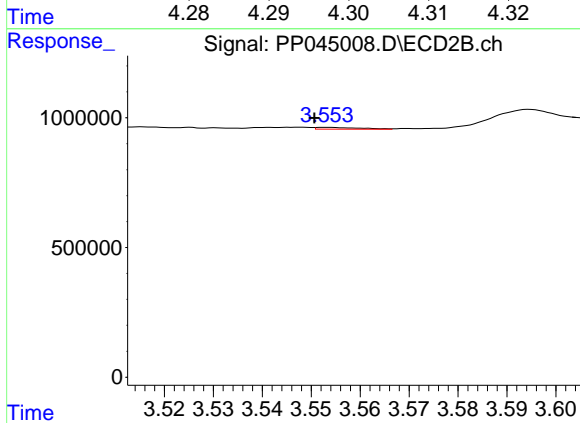
R.T.: 3.553 min
 Delta R.T.: 0.002 min
 Response: 43838
 Conc: 1.13 ng/ml



#11 AR-1232-1

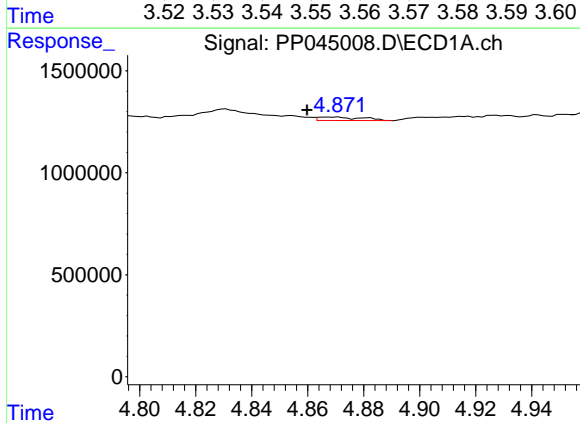
R.T.: 4.301 min
 Delta R.T.: 0.004 min
 Response: 68993
 Conc: 1.53 ng/ml

Instrument :
 ECD_P
 ClientSampleId :



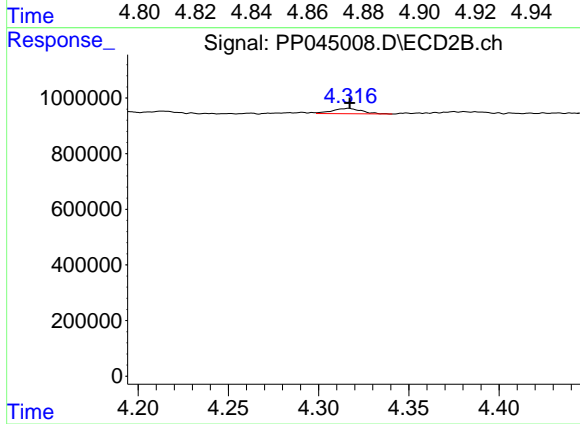
#11 AR-1232-1

R.T.: 3.553 min
 Delta R.T.: 0.003 min
 Response: 43838
 Conc: 1.22 ng/ml



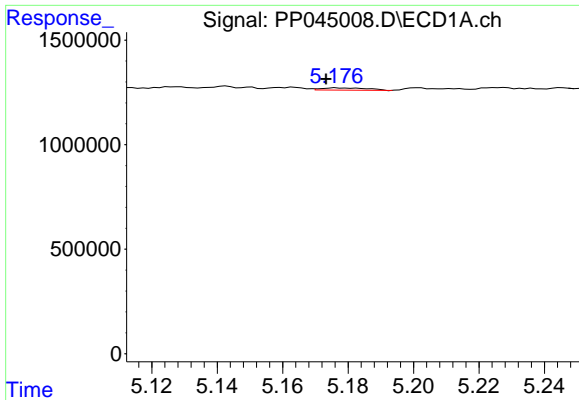
#12 AR-1232-2

R.T.: 4.867 min
 Delta R.T.: 0.007 min
 Response: 189847
 Conc: 9.03 ng/ml



#12 AR-1232-2

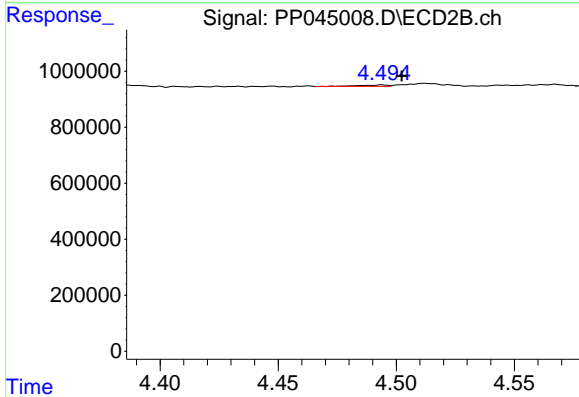
R.T.: 4.317 min
 Delta R.T.: 0.000 min
 Response: 213714
 Conc: 6.18 ng/ml



#13 AR-1232-3

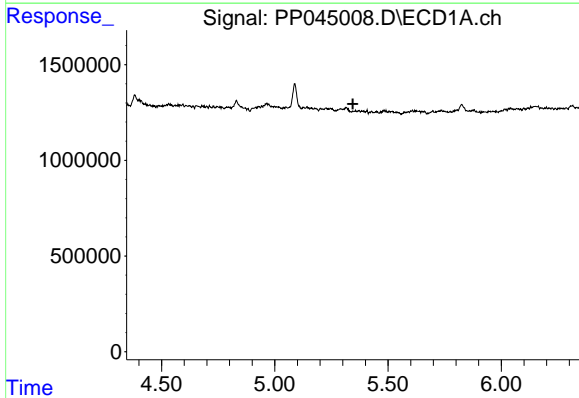
R.T.: 5.176 min
 Delta R.T.: 0.003 min
 Response: 106533
 Conc: 2.55 ng/ml

Instrument :
 ECD_P
 ClientSampleId :



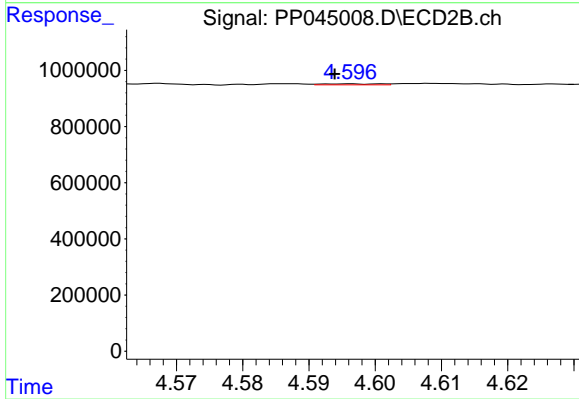
#13 AR-1232-3

R.T.: 4.494 min
 Delta R.T.: -0.008 min
 Response: 42894
 Conc: 2.29 ng/ml



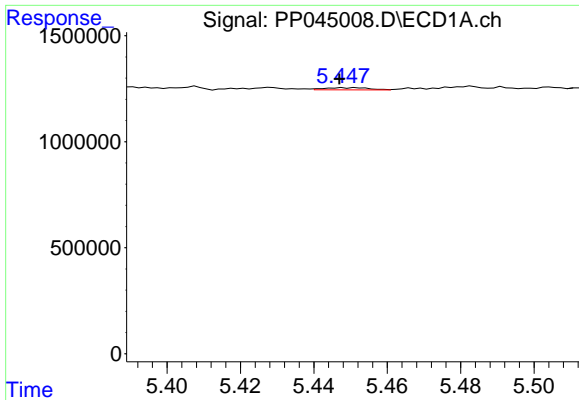
#14 AR-1232-4

R.T.: 5.357 min
 Delta R.T.: 0.012 min
 Response: -63218
 Conc: N.D.



#14 AR-1232-4

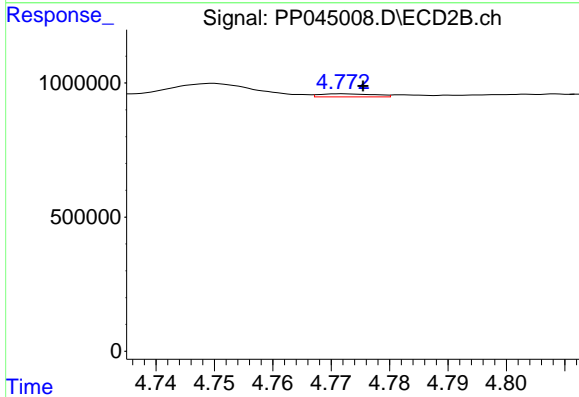
R.T.: 4.596 min
 Delta R.T.: 0.002 min
 Response: 22232
 Conc: 1.34 ng/ml



#15 AR-1232-5

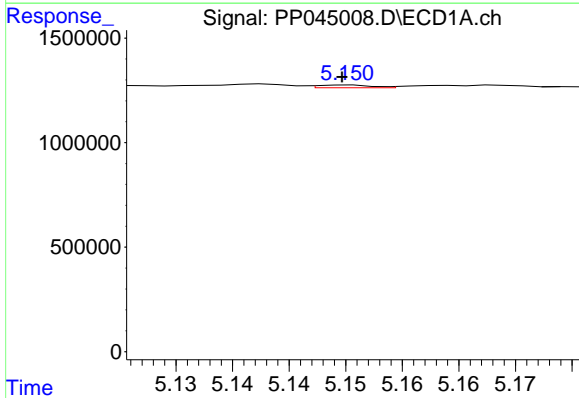
R.T.: 5.452 min
 Delta R.T.: 0.005 min
 Response: 86204
 Conc: 6.10 ng/ml

Instrument :
 ECD_P
 ClientSampleId :



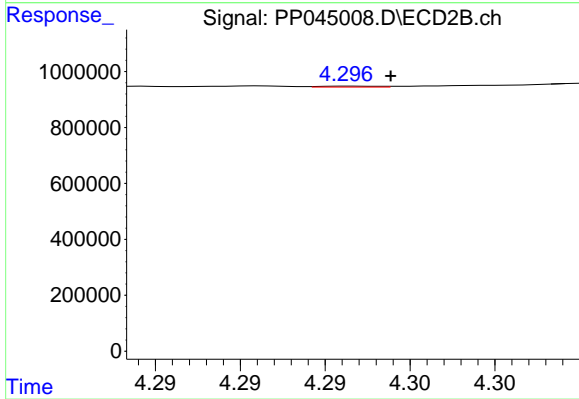
#15 AR-1232-5

R.T.: 4.772 min
 Delta R.T.: -0.004 min
 Response: 74093
 Conc: 4.01 ng/ml



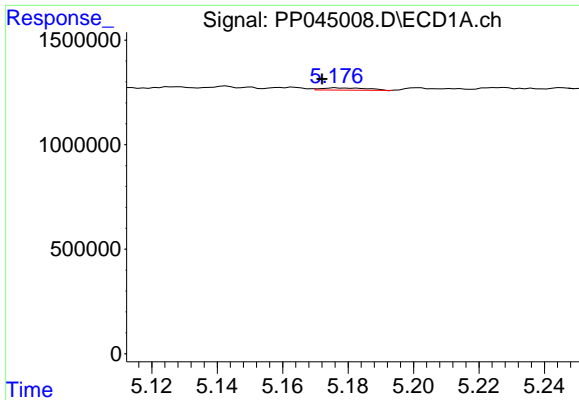
#16 AR-1242-1

R.T.: 5.150 min
 Delta R.T.: 0.000 min
 Response: 43121
 Conc: 0.94 ng/ml



#16 AR-1242-1

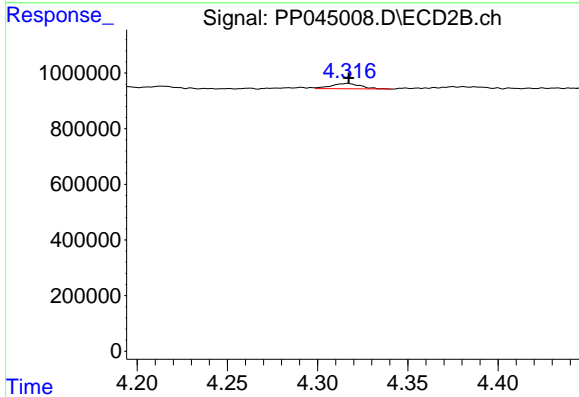
R.T.: 4.297 min
 Delta R.T.: -0.002 min
 Response: 7416
 Conc: 0.19 ng/ml



#17 AR-1242-2

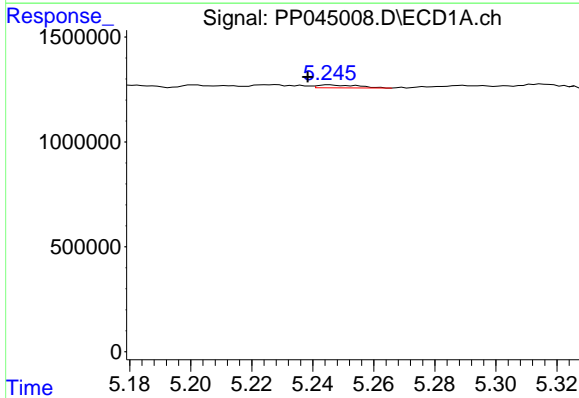
R.T.: 5.176 min
 Delta R.T.: 0.004 min
 Response: 106533
 Conc: 1.52 ng/ml

Instrument :
 ECD_P
 ClientSampleId :



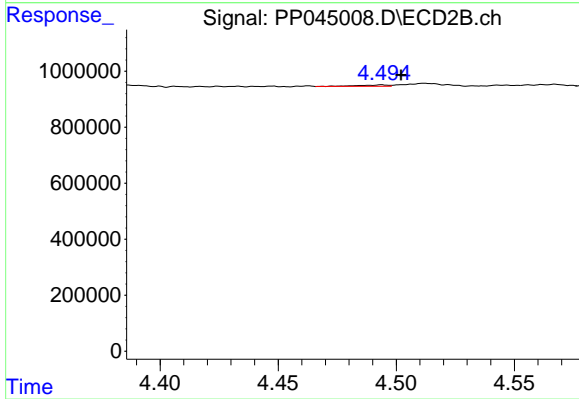
#17 AR-1242-2

R.T.: 4.317 min
 Delta R.T.: 0.000 min
 Response: 213714
 Conc: 3.77 ng/ml



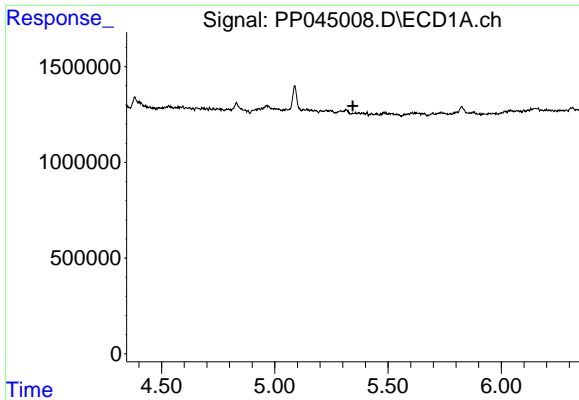
#18 AR-1242-3

R.T.: 5.245 min
 Delta R.T.: 0.007 min
 Response: 128000
 Conc: 3.12 ng/ml



#18 AR-1242-3

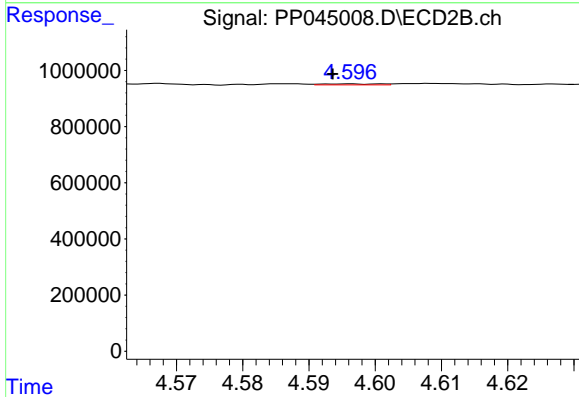
R.T.: 4.494 min
 Delta R.T.: -0.008 min
 Response: 42894
 Conc: 1.38 ng/ml



#19 AR-1242-4

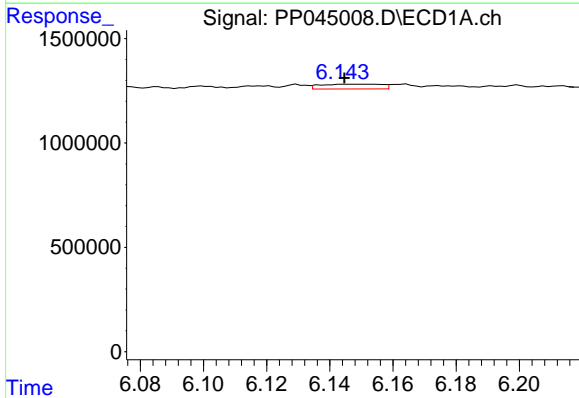
R.T.: 5.357 min
 Delta R.T.: 0.012 min
 Response: -63218
 Conc: N.D.

Instrument :
 ECD_P
 ClientSampleId :



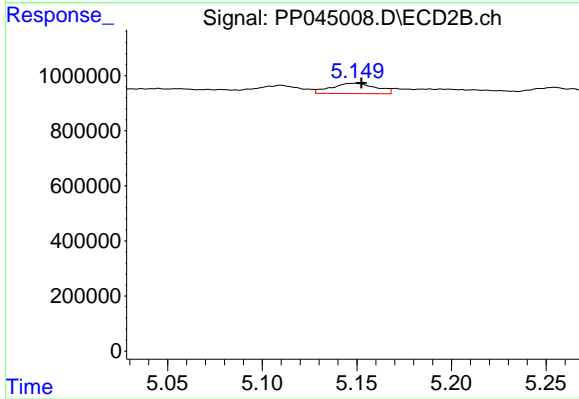
#19 AR-1242-4

R.T.: 4.596 min
 Delta R.T.: 0.003 min
 Response: 22232
 Conc: 0.73 ng/ml



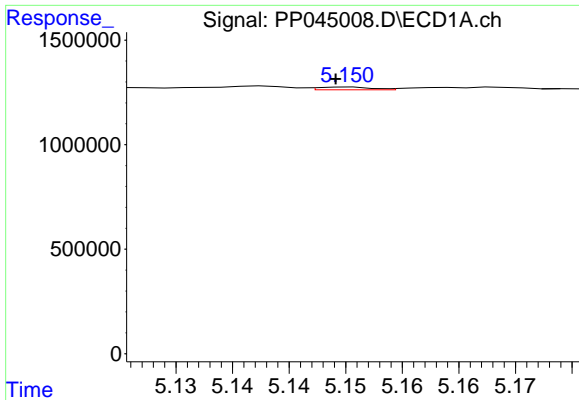
#20 AR-1242-5

R.T.: 6.152 min
 Delta R.T.: 0.007 min
 Response: 309506
 Conc: 8.46 ng/ml



#20 AR-1242-5

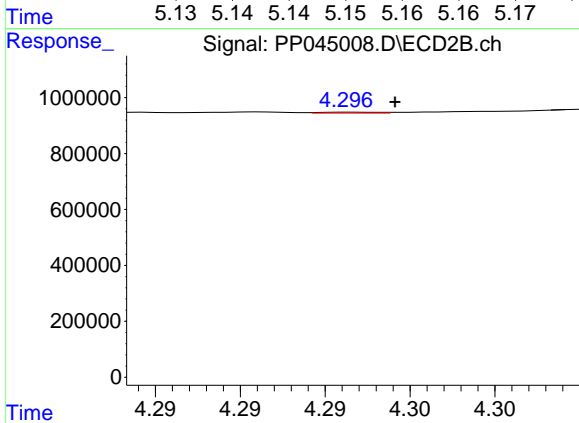
R.T.: 5.149 min
 Delta R.T.: -0.004 min
 Response: 615464
 Conc: 15.47 ng/ml



#21 AR-1248-1

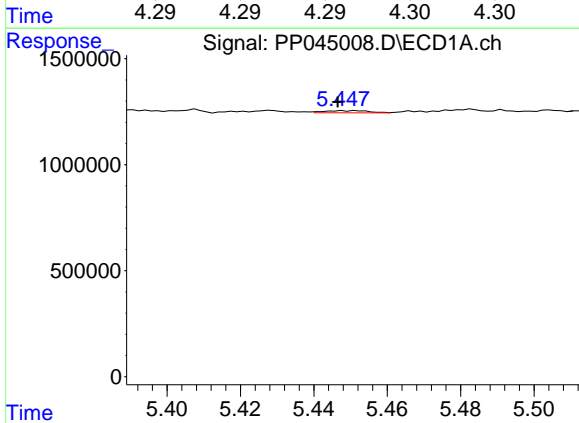
R.T.: 5.150 min
 Delta R.T.: 0.000 min
 Response: 43121
 Conc: 1.23 ng/ml

Instrument :
 ECD_P
 ClientSampleId :



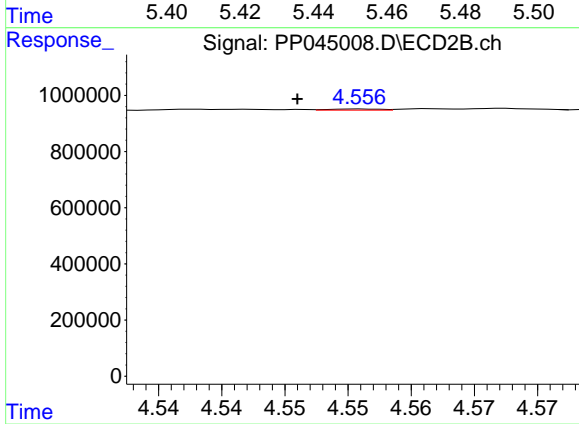
#21 AR-1248-1

R.T.: 4.297 min
 Delta R.T.: -0.002 min
 Response: 7416
 Conc: 0.23 ng/ml



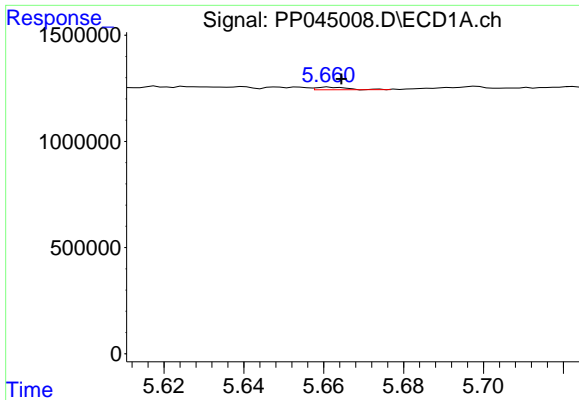
#22 AR-1248-2

R.T.: 5.452 min
 Delta R.T.: 0.005 min
 Response: 86204
 Conc: 1.82 ng/ml



#22 AR-1248-2

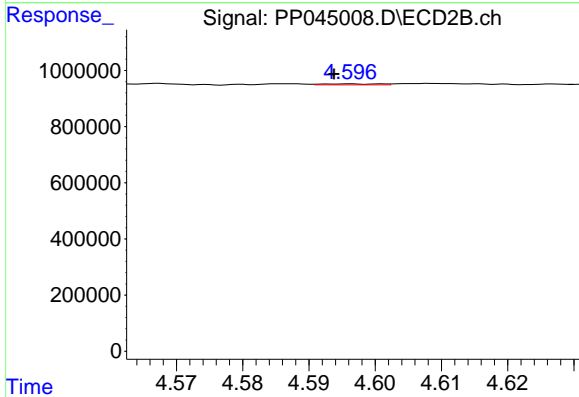
R.T.: 4.556 min
 Delta R.T.: 0.005 min
 Response: 11956
 Conc: 0.27 ng/ml



#23 AR-1248-3

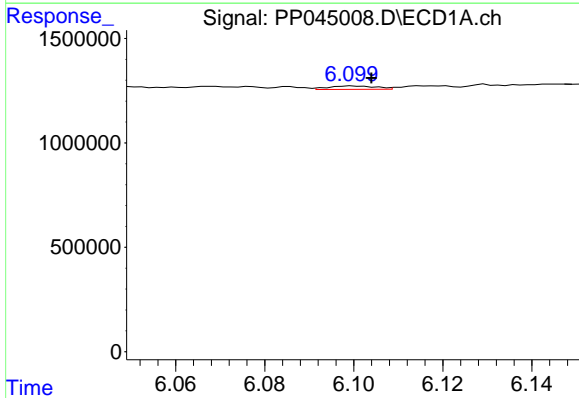
R.T.: 5.661 min
 Delta R.T.: -0.003 min
 Response: 68062
 Conc: 1.15 ng/ml

Instrument :
 ECD_P
 ClientSampleId :



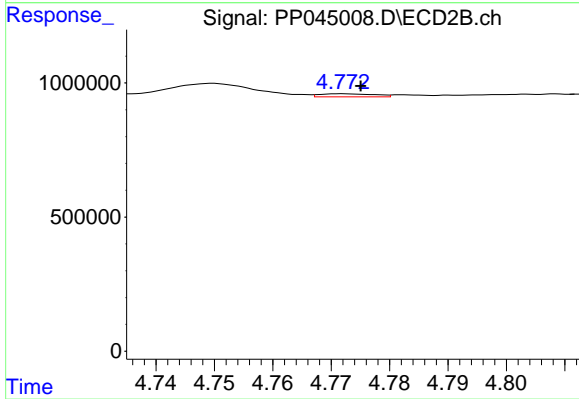
#23 AR-1248-3

R.T.: 4.596 min
 Delta R.T.: 0.003 min
 Response: 22232
 Conc: 0.49 ng/ml



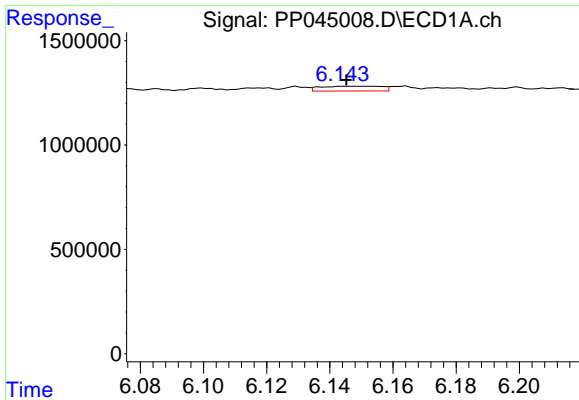
#24 AR-1248-4

R.T.: 6.100 min
 Delta R.T.: -0.004 min
 Response: 121701
 Conc: 1.92 ng/ml



#24 AR-1248-4

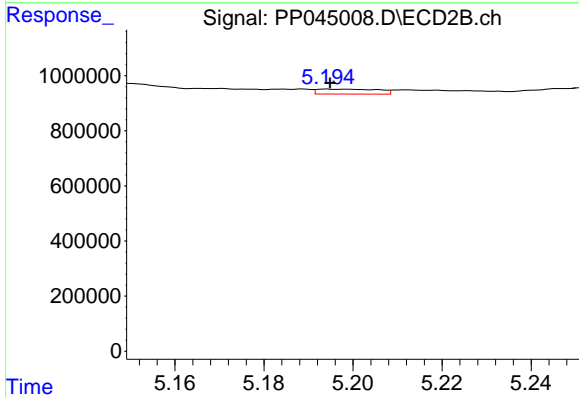
R.T.: 4.772 min
 Delta R.T.: -0.003 min
 Response: 74093
 Conc: 1.37 ng/ml



#25 AR-1248-5

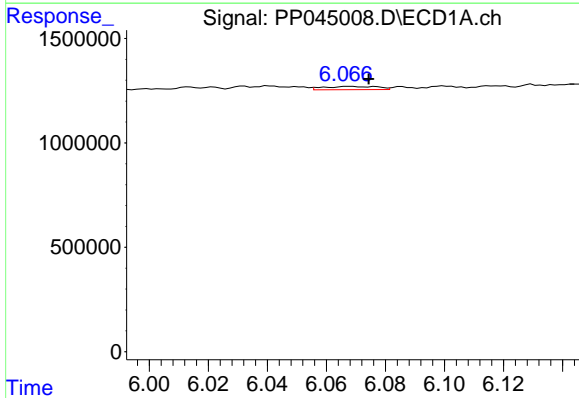
R.T.: 6.152 min
 Delta R.T.: 0.007 min
 Response: 309506
 Conc: 4.96 ng/ml

Instrument :
 ECD_P
 ClientSampleId :



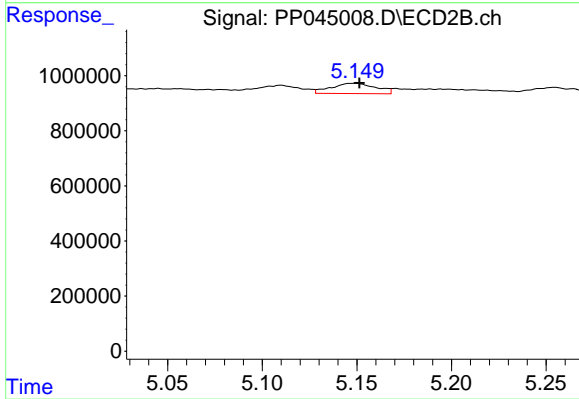
#25 AR-1248-5

R.T.: 5.194 min
 Delta R.T.: 0.000 min
 Response: 171333
 Conc: 3.05 ng/ml



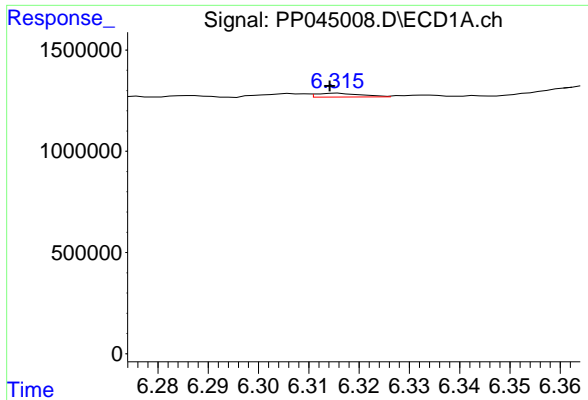
#26 AR-1254-1

R.T.: 6.068 min
 Delta R.T.: -0.007 min
 Response: 200054
 Conc: 3.01 ng/ml



#26 AR-1254-1

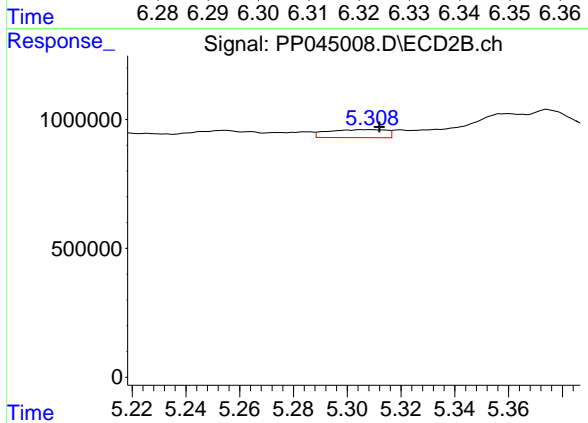
R.T.: 5.149 min
 Delta R.T.: -0.003 min
 Response: 615464
 Conc: 7.12 ng/ml



#27 AR-1254-2

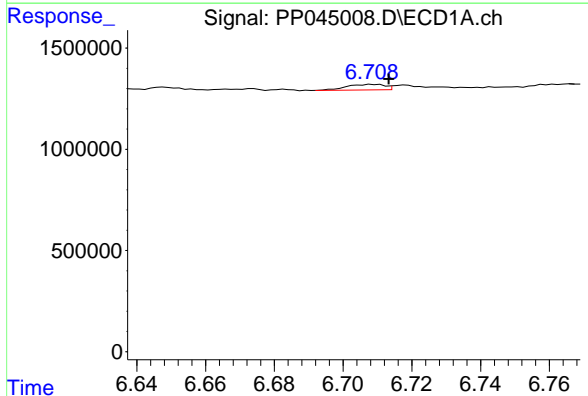
R.T.: 6.316 min
 Delta R.T.: 0.001 min
 Response: 118977
 Conc: 1.19 ng/ml

Instrument :
 ECD_P
 ClientSampleId :



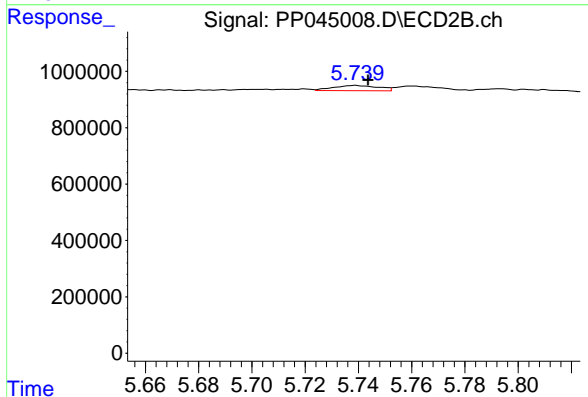
#27 AR-1254-2

R.T.: 5.305 min
 Delta R.T.: -0.007 min
 Response: 470086
 Conc: 6.32 ng/ml



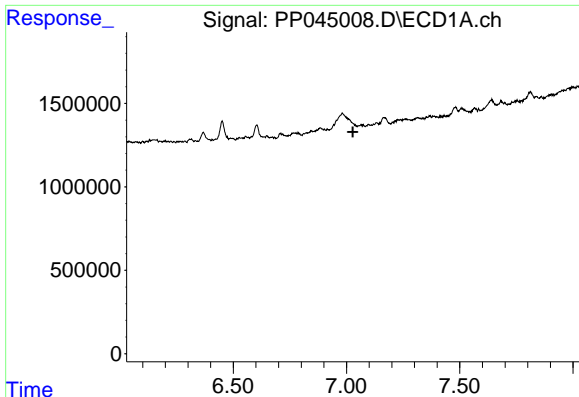
#28 AR-1254-3

R.T.: 6.709 min
 Delta R.T.: -0.004 min
 Response: 212687
 Conc: 2.08 ng/ml



#28 AR-1254-3

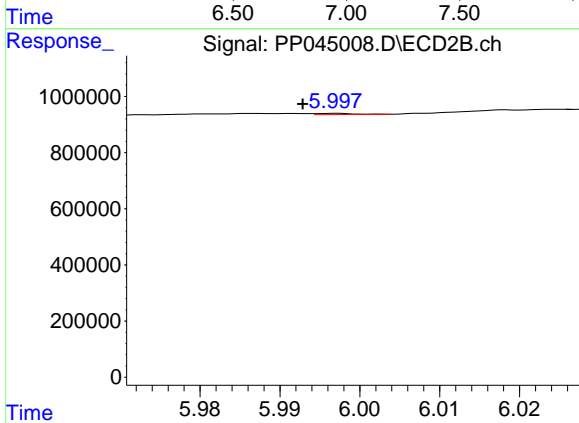
R.T.: 5.739 min
 Delta R.T.: -0.005 min
 Response: 217754
 Conc: 1.90 ng/ml



#29 AR-1254-4

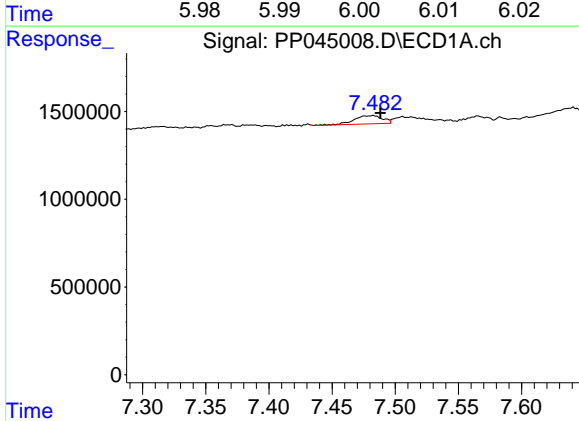
R.T.: 0.000 min
 Exp R.T.: 7.027 min
 Response: 0
 Conc: N.D.

Instrument :
 ECD_P
 ClientSampleId :



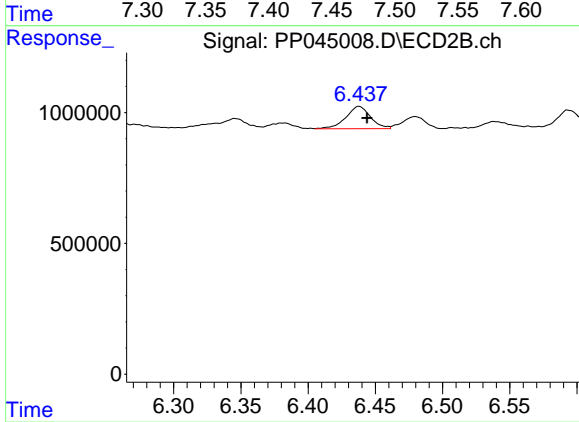
#29 AR-1254-4

R.T.: 5.997 min
 Delta R.T.: 0.004 min
 Response: 13142
 Conc: 0.18 ng/ml



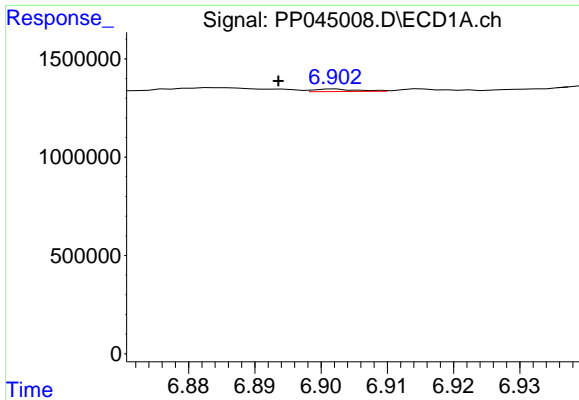
#30 AR-1254-5

R.T.: 7.483 min
 Delta R.T.: -0.006 min
 Response: 722023
 Conc: 9.34 ng/ml



#30 AR-1254-5

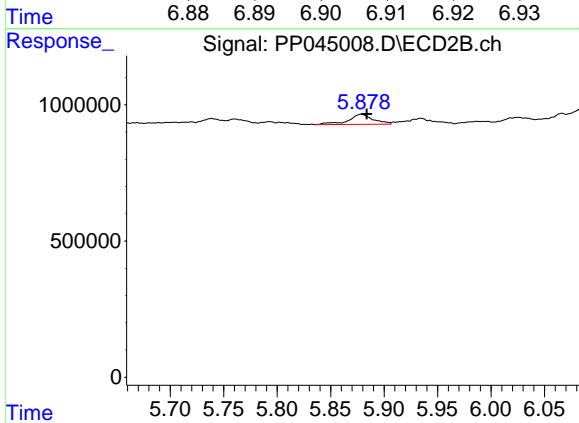
R.T.: 6.438 min
 Delta R.T.: -0.006 min
 Response: 1087392
 Conc: 10.56 ng/ml



#31 AR-1260-1

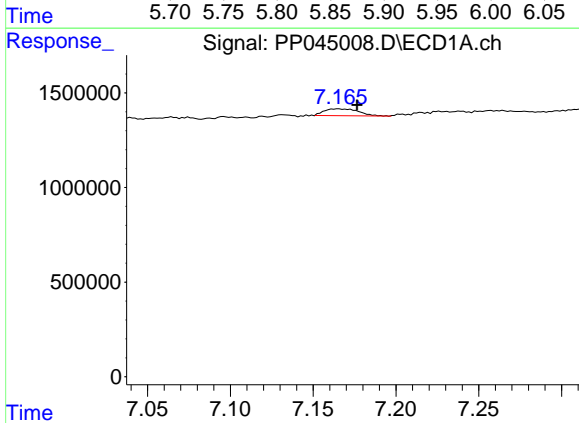
R.T.: 6.902 min
 Delta R.T.: 0.009 min
 Response: 57922
 Conc: 0.84 ng/ml

Instrument :
 ECD_P
 ClientSampleId :



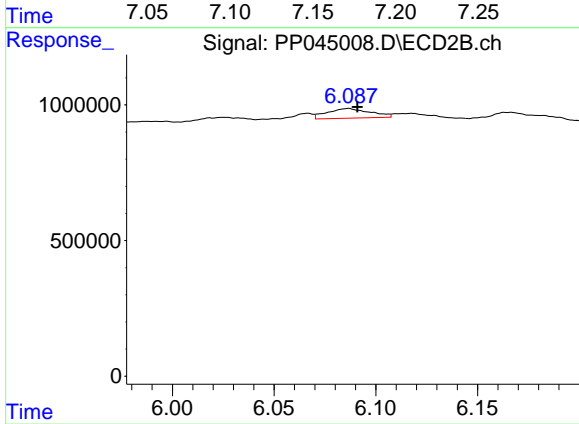
#31 AR-1260-1

R.T.: 5.879 min
 Delta R.T.: -0.005 min
 Response: 605054
 Conc: 8.59 ng/ml



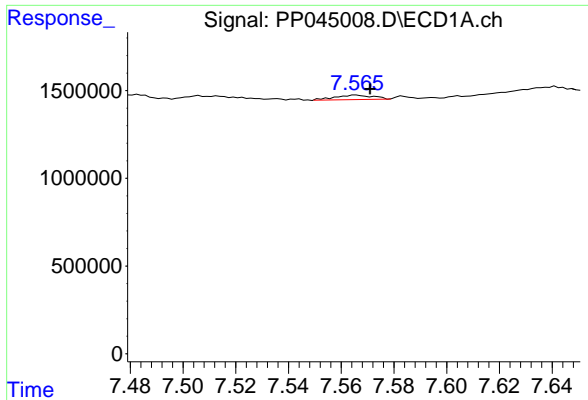
#32 AR-1260-2

R.T.: 7.165 min
 Delta R.T.: -0.011 min
 Response: 519636
 Conc: 6.69 ng/ml



#32 AR-1260-2

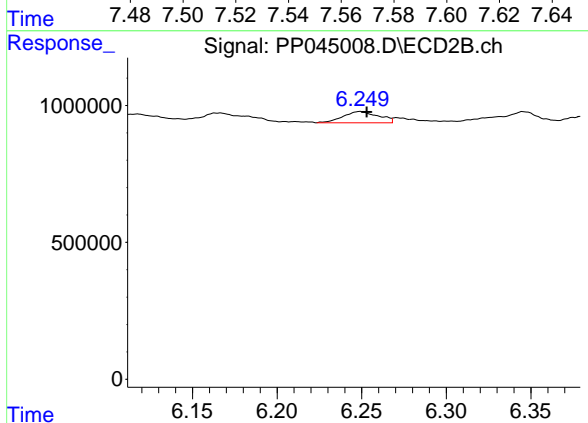
R.T.: 6.087 min
 Delta R.T.: -0.004 min
 Response: 524549
 Conc: 5.87 ng/ml



#33 AR-1260-3

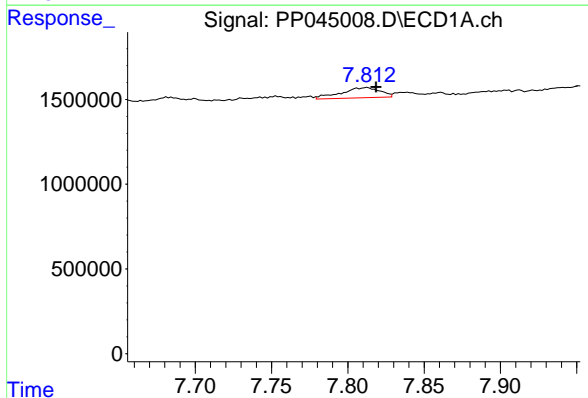
R.T.: 7.566 min
 Delta R.T.: -0.005 min
 Response: 257162
 Conc: 4.09 ng/ml

Instrument :
 ECD_P
 ClientSampleId :



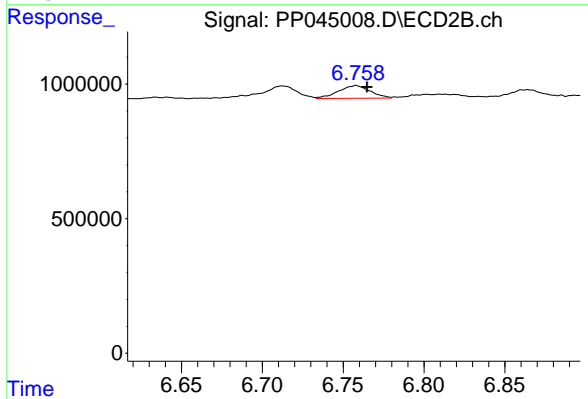
#33 AR-1260-3

R.T.: 6.249 min
 Delta R.T.: -0.004 min
 Response: 601601
 Conc: 7.06 ng/ml



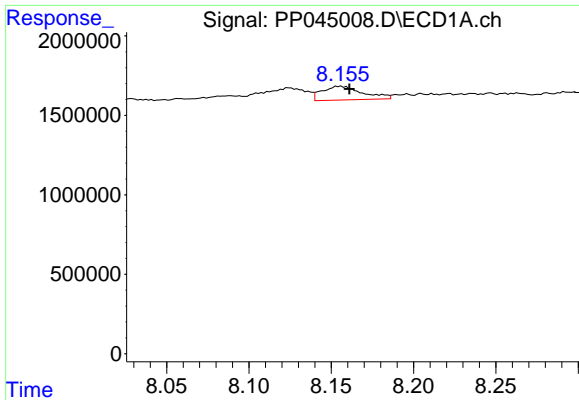
#34 AR-1260-4

R.T.: 7.813 min
 Delta R.T.: -0.006 min
 Response: 1074089
 Conc: 14.64 ng/ml



#34 AR-1260-4

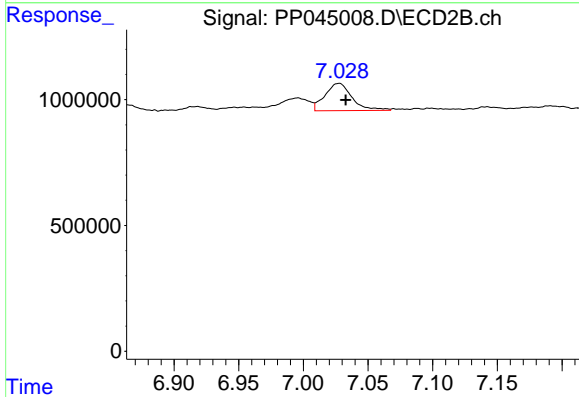
R.T.: 6.758 min
 Delta R.T.: -0.007 min
 Response: 641595
 Conc: 9.55 ng/ml



#35 AR-1260-5

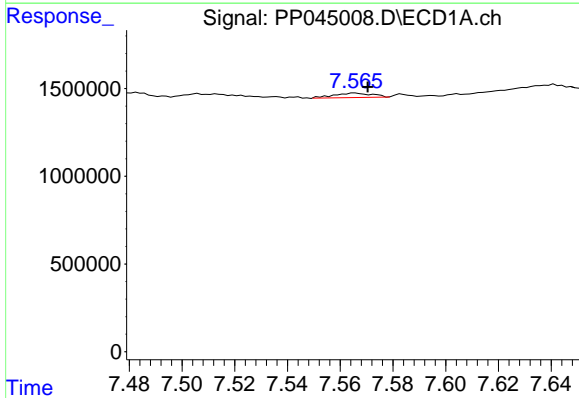
R.T.: 8.155 min
 Delta R.T.: -0.006 min
 Response: 1481751
 Conc: 10.58 ng/ml

Instrument :
 ECD_P
 ClientSampleId :



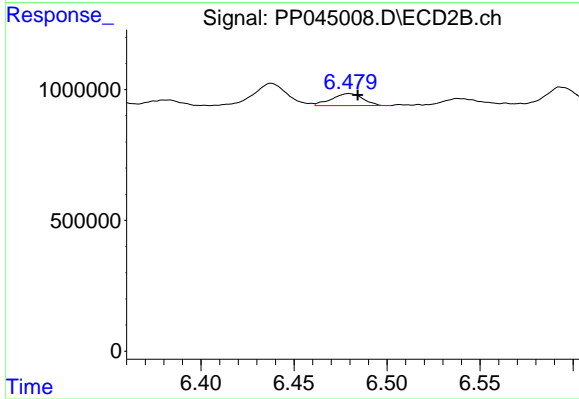
#35 AR-1260-5

R.T.: 7.028 min
 Delta R.T.: -0.005 min
 Response: 1580167
 Conc: 10.11 ng/ml



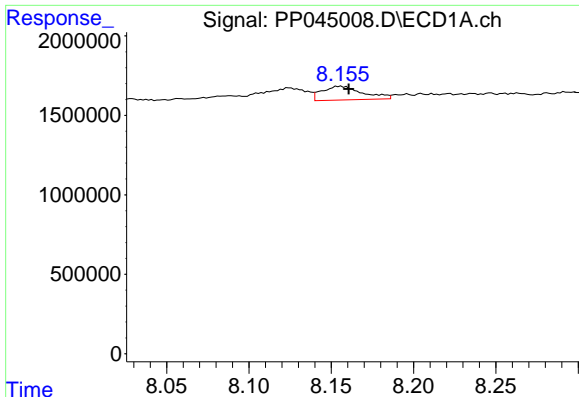
#36 AR-1262-1

R.T.: 7.566 min
 Delta R.T.: -0.005 min
 Response: 257162
 Conc: 2.71 ng/ml



#36 AR-1262-1

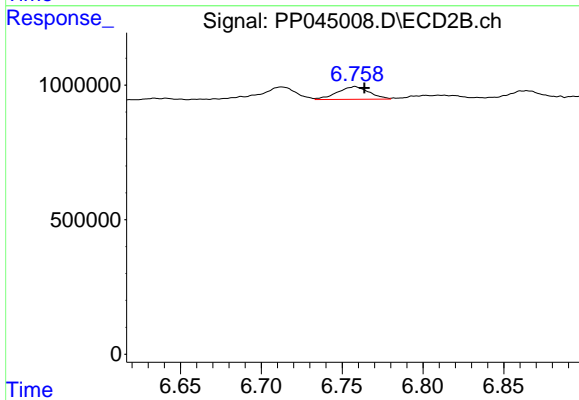
R.T.: 6.479 min
 Delta R.T.: -0.005 min
 Response: 539246
 Conc: 5.24 ng/ml



#37 AR-1262-2

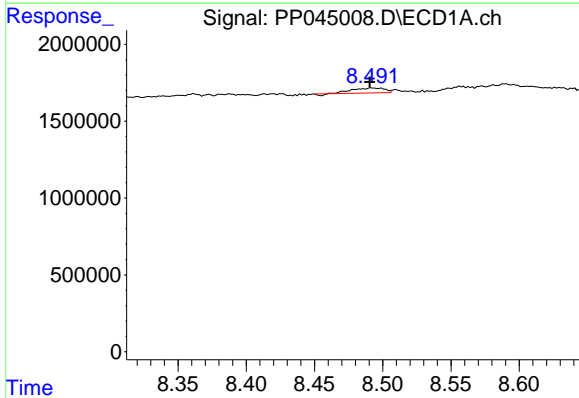
R.T.: 8.155 min
 Delta R.T.: -0.006 min
 Response: 1481751
 Conc: 9.21 ng/ml

Instrument :
 ECD_P
 ClientSampleId :



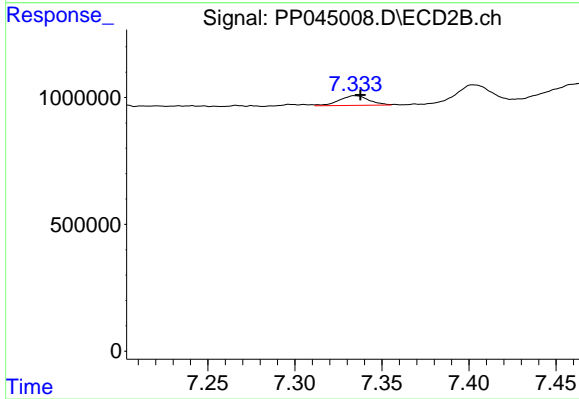
#37 AR-1262-2

R.T.: 6.758 min
 Delta R.T.: -0.006 min
 Response: 641595
 Conc: 6.95 ng/ml



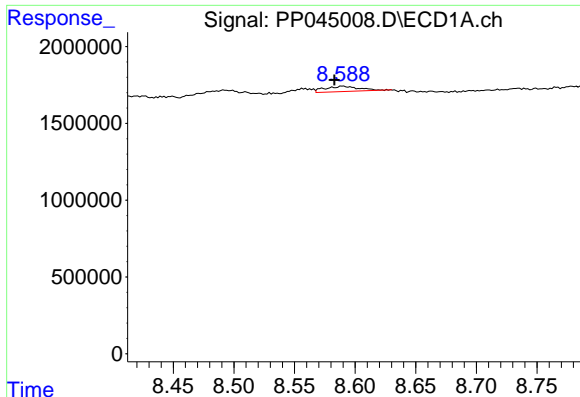
#38 AR-1262-3

R.T.: 8.492 min
 Delta R.T.: 0.001 min
 Response: 511478
 Conc: 4.74 ng/ml



#38 AR-1262-3

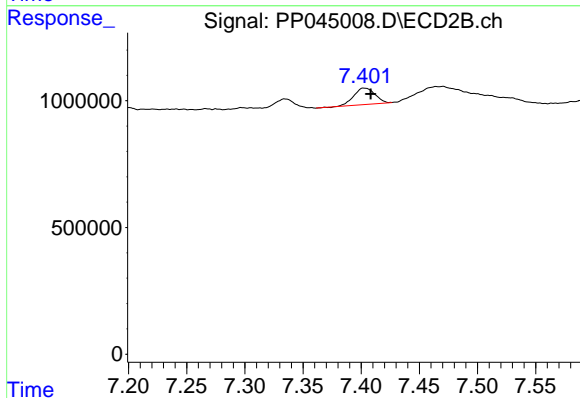
R.T.: 7.334 min
 Delta R.T.: -0.004 min
 Response: 457104
 Conc: 6.28 ng/ml



#39 AR-1262-4

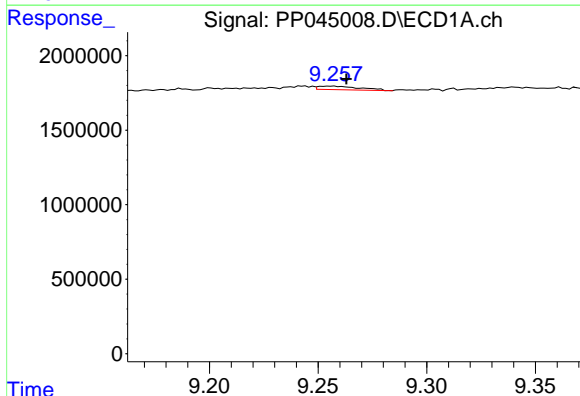
R.T.: 8.590 min
 Delta R.T.: 0.007 min
 Response: 674480
 Conc: 13.19 ng/ml

Instrument :
 ECD_P
 ClientSampleId :



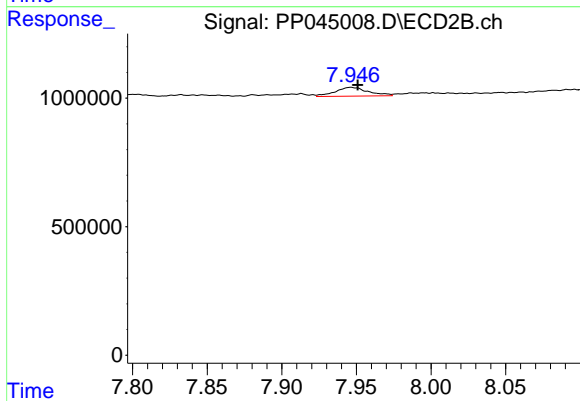
#39 AR-1262-4

R.T.: 7.402 min
 Delta R.T.: -0.006 min
 Response: 818101
 Conc: 6.09 ng/ml



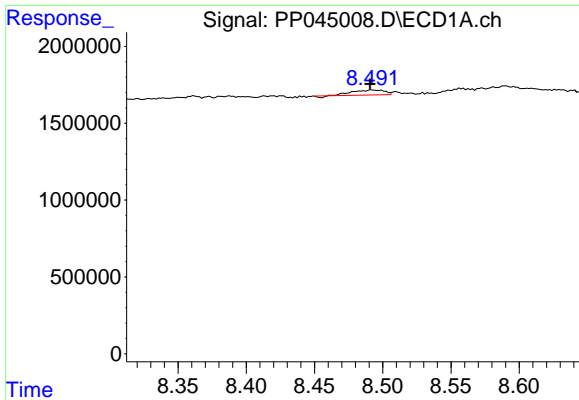
#40 AR-1262-5

R.T.: 9.256 min
 Delta R.T.: -0.007 min
 Response: 313513
 Conc: 5.61 ng/ml



#40 AR-1262-5

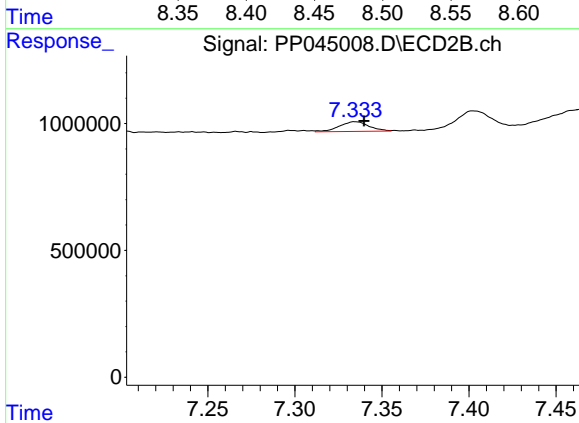
R.T.: 7.946 min
 Delta R.T.: -0.005 min
 Response: 530942
 Conc: 8.06 ng/ml



#41 AR-1268-1

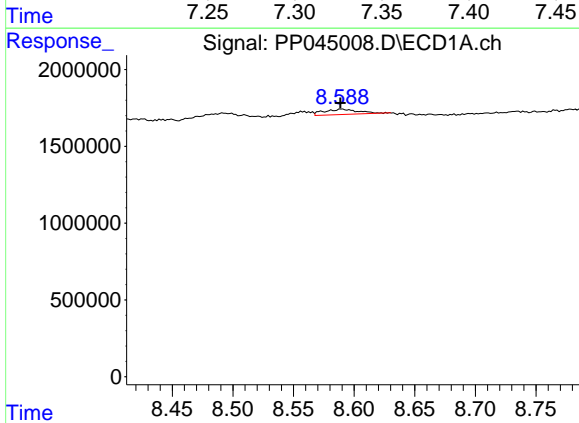
R.T.: 8.492 min
 Delta R.T.: 0.001 min
 Response: 511478
 Conc: 2.66 ng/ml

Instrument :
 ECD_P
 ClientSampleId :



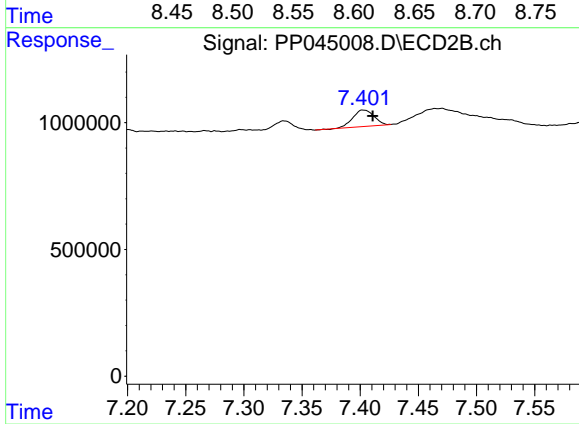
#41 AR-1268-1

R.T.: 7.334 min
 Delta R.T.: -0.005 min
 Response: 457104
 Conc: 2.12 ng/ml



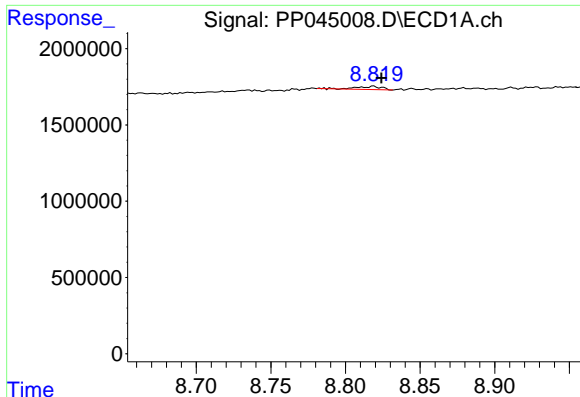
#42 AR-1268-2

R.T.: 8.590 min
 Delta R.T.: 0.001 min
 Response: 674480
 Conc: 3.86 ng/ml



#42 AR-1268-2

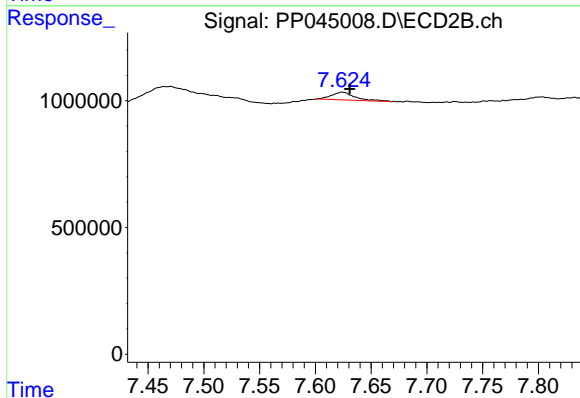
R.T.: 7.402 min
 Delta R.T.: -0.009 min
 Response: 818101
 Conc: 4.18 ng/ml



#43 AR-1268-3

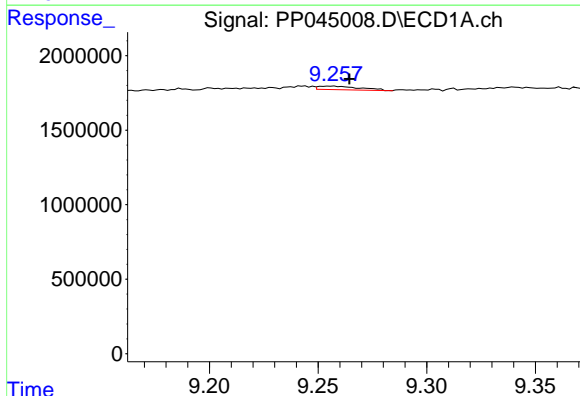
R.T.: 8.819 min
 Delta R.T.: -0.005 min
 Response: 244242
 Conc: 1.60 ng/ml

Instrument :
 ECD_P
 ClientSampleId :



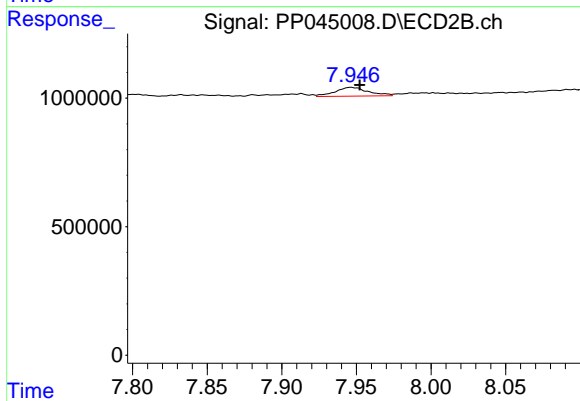
#43 AR-1268-3

R.T.: 7.624 min
 Delta R.T.: -0.007 min
 Response: 452033
 Conc: 2.74 ng/ml



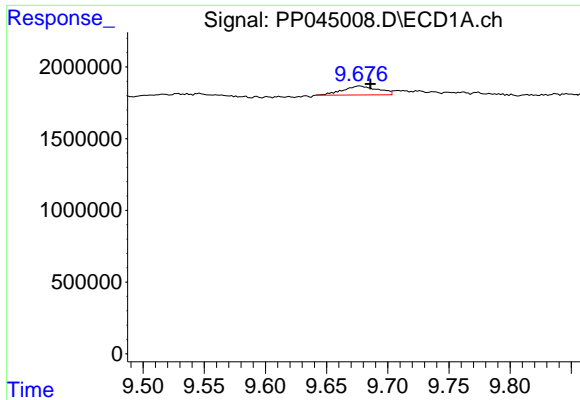
#44 AR-1268-4

R.T.: 9.256 min
 Delta R.T.: -0.008 min
 Response: 313513
 Conc: 5.01 ng/ml



#44 AR-1268-4

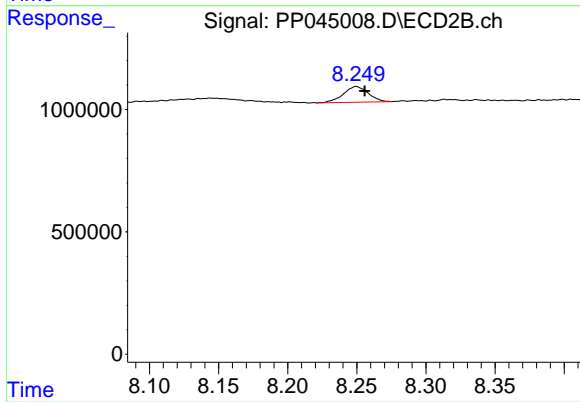
R.T.: 7.946 min
 Delta R.T.: -0.006 min
 Response: 530942
 Conc: 6.93 ng/ml



#45 AR-1268-5

R.T.: 9.677 min
 Delta R.T.: -0.009 min
 Response: 1239818
 Conc: 2.57 ng/ml

Instrument :
 ECD_P
 ClientSampleId :



#45 AR-1268-5

R.T.: 8.250 min
 Delta R.T.: -0.006 min
 Response: 804040
 Conc: 1.56 ng/ml