

Data Path : Z:\pestpcbsrv\HPCHEM1\ECD_P\Data\PP032222\
 Data File : PP045012.D
 Signal(s) : Signal #1: ECD1A.ch Signal #2: ECD2B.ch
 Acq On : 23 Mar 2022 02:25
 Operator : YP\AJ
 Sample : AR1254CCC500
 Misc :
 ALS Vial : 6 Sample Multiplier: 1

Instrument :
 ECD_P
 ClientSampleId :

Integration File signal 1: autoint1.e
 Integration File signal 2: autoint2.e
 Quant Time: Mar 23 05:10:54 2022
 Quant Method : Z:\pestpcbsrv\HPCHEM1\ECD_P\methods\PP031722.M
 Quant Title : GC EXTRACTABLES
 QLast Update : Thu Mar 17 04:32:40 2022
 Response via : Initial Calibration
 Integrator: ChemStation

Volume Inj. : 2 µl
 Signal #1 Phase : ZB-MR1 Signal #2 Phase: ZB-MR2
 Signal #1 Info : 30Mx0.32mmx 0.50µ Signal #2 Info : 30M x 0.32mm x 0.25µm

Compound	RT#1	RT#2	Resp#1	Resp#2	ng/ml	ng/ml

System Monitoring Compounds						
1) SA Tetrachlo...	3.895	3.154	102.2E6	78952322	56.111	59.911
2) SA Decachlor...	10.015	8.509	68126247	70532721	52.923	54.282
Target Compounds						
3) L1 AR-1016-1	5.143	4.295	892224	971076	15.205	19.170 #
4) L1 AR-1016-2	5.171	4.314	1170574	844277	13.094	11.712
5) L1 AR-1016-3	5.234	4.500	552309	575215	10.613	14.620 #
6) L1 AR-1016-4	5.339	4.548	335196	19226652	7.834	610.690 #
7) L1 AR-1016-5	5.660	4.772	11679255	11857054	266.133	297.056
8) L2 AR-1221-1	4.142	3.376	68812	87328	3.353	5.883 #
9) L2 AR-1221-2	4.257f	3.467	73091	1281078	4.781	103.406 #
10) L2 AR-1221-3	4.325	3.549	70388	316875	1.458	8.163 #
11) L3 AR-1232-1	4.292	3.549	444284	316875	9.874	8.816
12) L3 AR-1232-2	4.856	4.314	488270	844277	23.236	24.413
13) L3 AR-1232-3	5.171	4.500	1170574	575215	28.059	30.712
14) L3 AR-1232-4	5.339	4.590	335196	6122907	16.761	369.865 #
15) L3 AR-1232-5	5.441	4.772	19206882	11857054	1359.223	641.264 #
16) L4 AR-1242-1	5.143	4.295	892224	971076	19.444	24.309 #
17) L4 AR-1242-2	5.171	4.314	1170574	844277	16.716	14.875
18) L4 AR-1242-3	5.234	4.500	552309	575215	13.447	18.446 #
19) L4 AR-1242-4	5.339	4.590	335196	6122907	9.745	202.077 #
20) L4 AR-1242-5	6.143	5.148	10692459	47904833	292.398	1204.239 #
21) L5 AR-1248-1	5.143	4.295	892224	971076	25.368	30.749
22) L5 AR-1248-2	5.441	4.548	19206882	19226652	406.025	439.635
23) L5 AR-1248-3	5.660	4.590	11679255	6122907	197.664	133.997 #
24) L5 AR-1248-4	6.099	4.772	16698441	11857054	263.132	219.487
25) L5 AR-1248-5	6.143	5.191	10692459	7029473	171.367	125.206 #
26) L6 AR-1254-1	6.069	5.148	29617927	47904833	446.057	553.966
27) L6 AR-1254-2	6.309	5.308	47438901	40491858	474.808	544.145
28) L6 AR-1254-3	6.709	5.739	48686967	59327758	476.018	516.344
29) L6 AR-1254-4	7.022	5.989	35814210	39635984	492.396	531.630
30) L6 AR-1254-5	7.482	6.439	36921845	55210768	477.376	536.174
31) L7 AR-1260-1	6.888	5.880	19553598	31404511	284.020	446.018 #
32) L7 AR-1260-2	7.172	6.086	16398402	24623991	211.212	275.347 #
33) L7 AR-1260-3	7.547f	6.247	5185542	26162271	82.407	307.180 #
34) L7 AR-1260-4	7.799f	6.760	15213725	2936664	207.396	43.696 #
35) L7 AR-1260-5	8.156	7.027	5594769	6568537	39.953	42.037
36) L8 AR-1262-1	7.547f	6.513f	5185542	4668878	54.694	45.349
37) L8 AR-1262-2	8.156	6.760	5594769	2936664	34.766	31.816
38) L8 AR-1262-3	8.500	7.336	4214235	301165	39.068	4.138 #
39) L8 AR-1262-4	8.589	7.401	71179	6537984	1.392	48.643 #
40) L8 AR-1262-5	9.264	7.948	63888	422473	1.143	6.417 #
41) L9 AR-1268-1	8.500	7.336	4214235	301165	21.892	1.396 #

Data Path : Z:\pestpcbsrv\HPCHEM1\ECD_P\Data\PP032222\
 Data File : PP045012.D
 Signal(s) : Signal #1: ECD1A.ch Signal #2: ECD2B.ch
 Acq On : 23 Mar 2022 02:25
 Operator : YP\AJ
 Sample : AR1254CCC500
 Misc :
 ALS Vial : 6 Sample Multiplier: 1

Instrument :
 ECD_P
 ClientSampleId :

Integration File signal 1: autoint1.e
 Integration File signal 2: autoint2.e
 Quant Time: Mar 23 05:10:54 2022
 Quant Method : Z:\pestpcbsrv\HPCHEM1\ECD_P\methods\PP031722.M
 Quant Title : GC EXTRACTABLES
 QLast Update : Thu Mar 17 04:32:40 2022
 Response via : Initial Calibration
 Integrator: ChemStation

Volume Inj. : 2 µl
 Signal #1 Phase : ZB-MR1 Signal #2 Phase: ZB-MR2
 Signal #1 Info : 30Mx0.32mmx 0.50µ Signal #2 Info : 30M x 0.32mm x 0.25µm

	Compound	RT#1	RT#2	Resp#1	Resp#2	ng/ml	ng/ml
42)	L9 AR-1268-2	8.589	7.401	71179	6537984	0.408	33.433 #
43)	L9 AR-1268-3	8.825	7.624	121984	139766	0.799	0.848
44)	L9 AR-1268-4	9.264	7.948	63888	422473	1.021	5.516 #
45)	L9 AR-1268-5	9.678	8.250	504614	529494	1.047	1.028

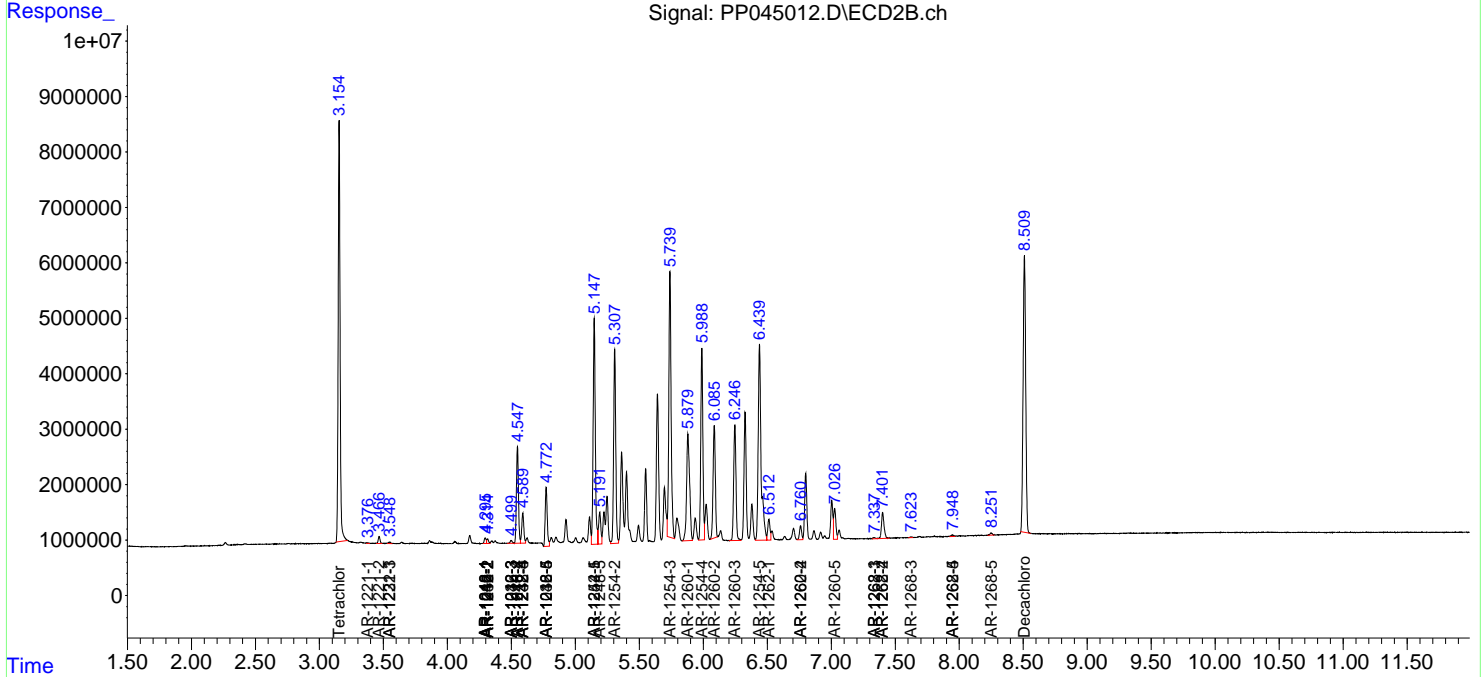
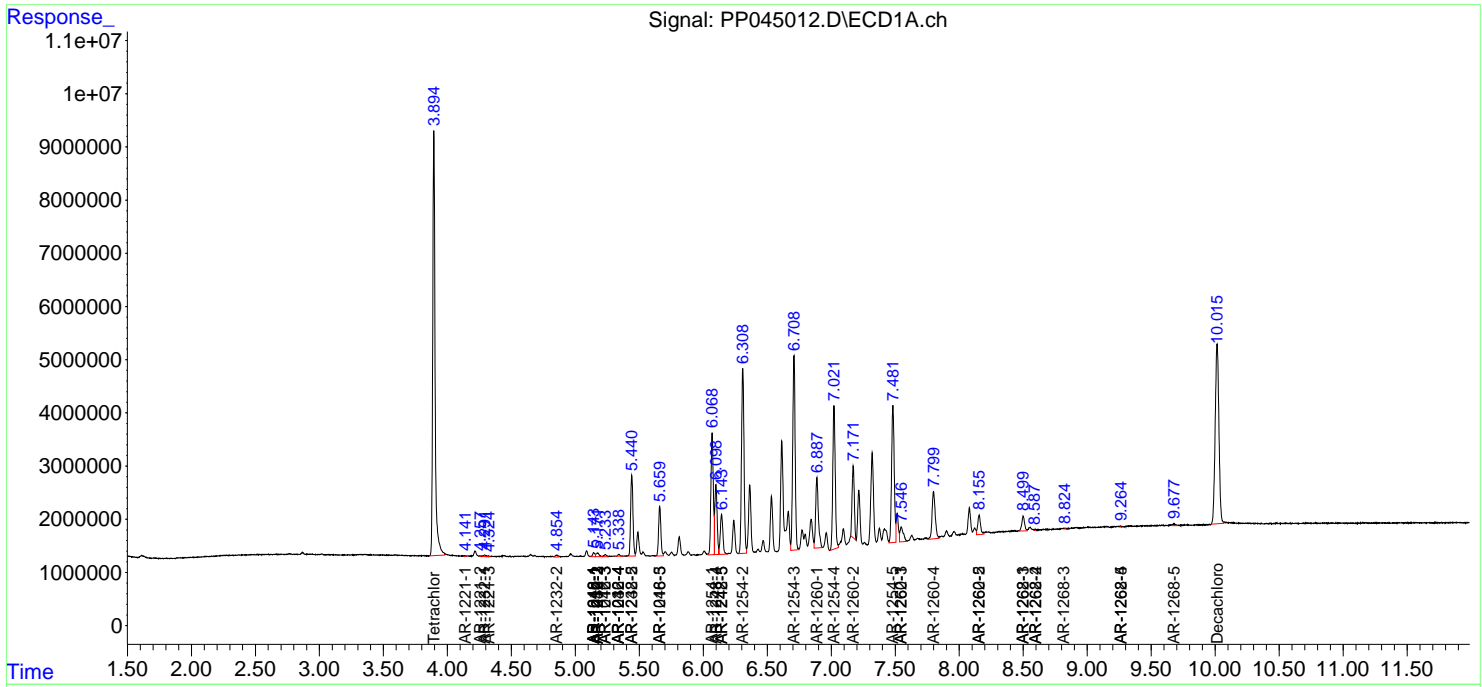
(f)=RT Delta > 1/2 Window (#)=Amounts differ by > 25% (m)=manual int.

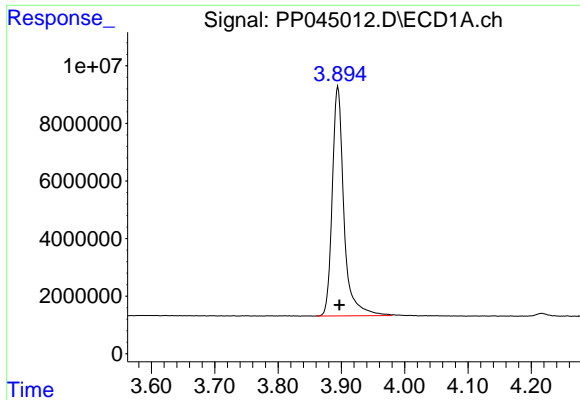
Data Path : Z:\pestpcbsrv\HPCHEM1\ECD_P\Data\PP032222\
 Data File : PP045012.D
 Signal(s) : Signal #1: ECD1A.ch Signal #2: ECD2B.ch
 Acq On : 23 Mar 2022 02:25
 Operator : YP\AJ
 Sample : AR1254CCC500
 Misc :
 ALS Vial : 6 Sample Multiplier: 1

Instrument :
 ECD_P
 ClientSampleId :

Integration File signal 1: autoint1.e
 Integration File signal 2: autoint2.e
 Quant Time: Mar 23 05:10:54 2022
 Quant Method : Z:\pestpcbsrv\HPCHEM1\ECD_P\methods\PP031722.M
 Quant Title : GC EXTRACTABLES
 QLast Update : Thu Mar 17 04:32:40 2022
 Response via : Initial Calibration
 Integrator: ChemStation

Volume Inj. : 2 µl
 Signal #1 Phase : ZB-MR1 Signal #2 Phase: ZB-MR2
 Signal #1 Info : 30Mx0.32mmx 0.50µ Signal #2 Info : 30M x 0.32mm x 0.25µm

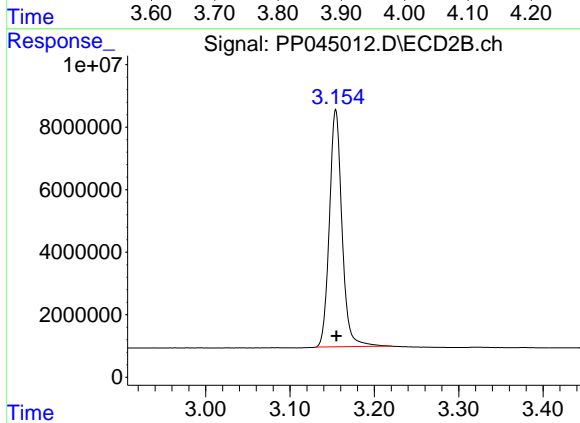




#1 Tetrachloro-m-xylene

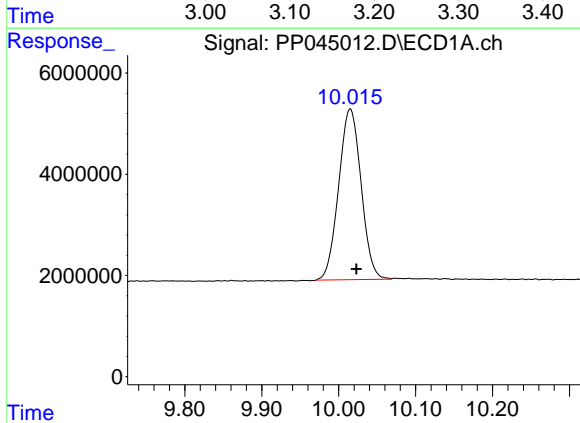
R.T.: 3.895 min
 Delta R.T.: -0.002 min
 Response: 102237264
 Conc: 56.11 ng/ml

Instrument :
 ECD_P
 ClientSampleId :



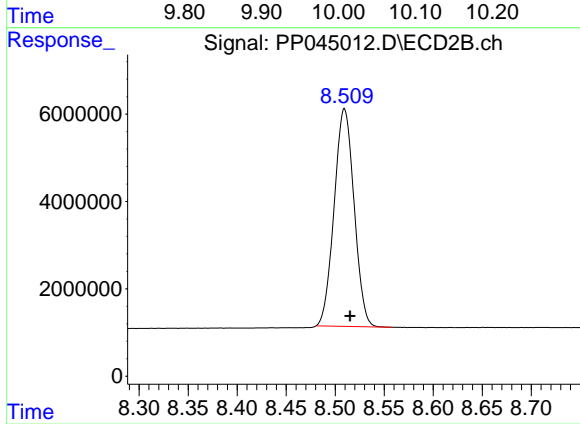
#1 Tetrachloro-m-xylene

R.T.: 3.154 min
 Delta R.T.: 0.000 min
 Response: 78952322
 Conc: 59.91 ng/ml



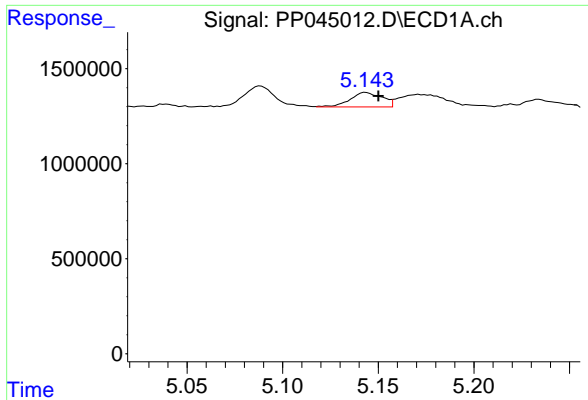
#2 Decachlorobiphenyl

R.T.: 10.015 min
 Delta R.T.: -0.008 min
 Response: 68126247
 Conc: 52.92 ng/ml



#2 Decachlorobiphenyl

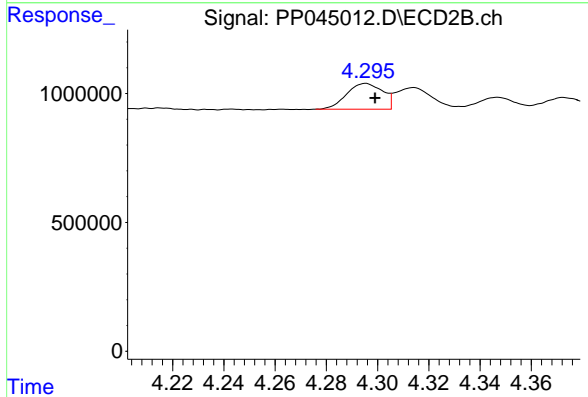
R.T.: 8.509 min
 Delta R.T.: -0.006 min
 Response: 70532721
 Conc: 54.28 ng/ml



#3 AR-1016-1

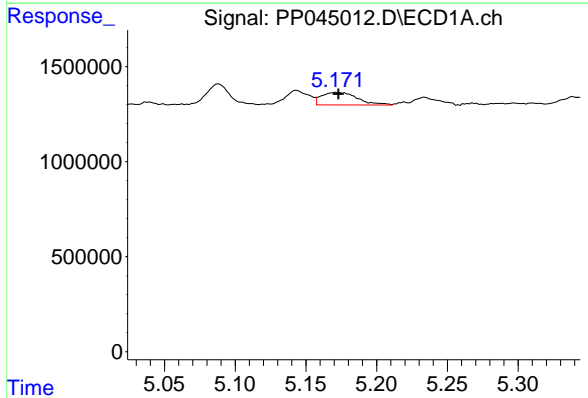
R.T.: 5.143 min
 Delta R.T.: -0.007 min
 Response: 892224
 Conc: 15.21 ng/ml

Instrument :
 ECD_P
 ClientSampleId :



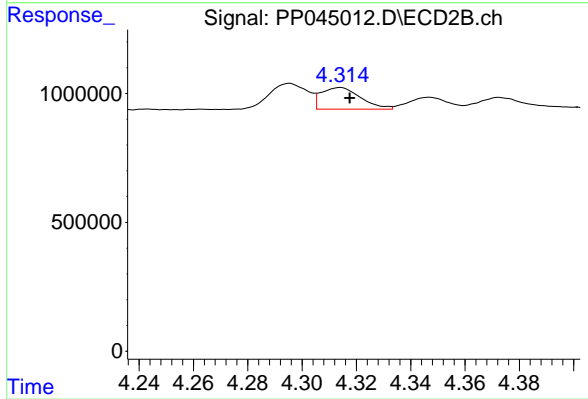
#3 AR-1016-1

R.T.: 4.295 min
 Delta R.T.: -0.004 min
 Response: 971076
 Conc: 19.17 ng/ml



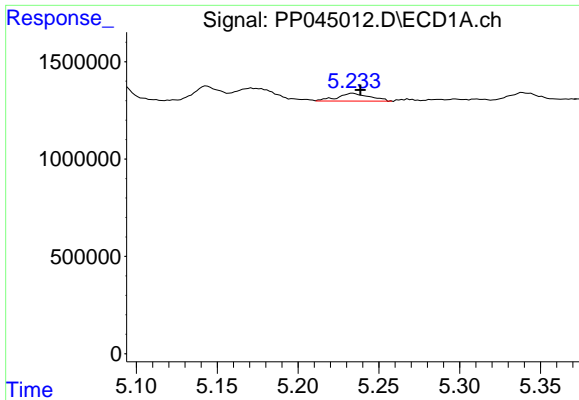
#4 AR-1016-2

R.T.: 5.171 min
 Delta R.T.: -0.002 min
 Response: 1170574
 Conc: 13.09 ng/ml



#4 AR-1016-2

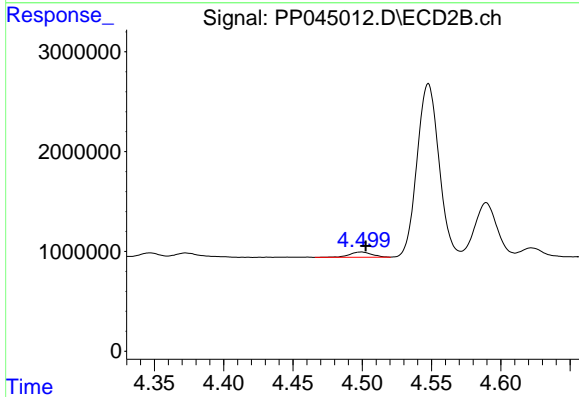
R.T.: 4.314 min
 Delta R.T.: -0.003 min
 Response: 844277
 Conc: 11.71 ng/ml



#5 AR-1016-3

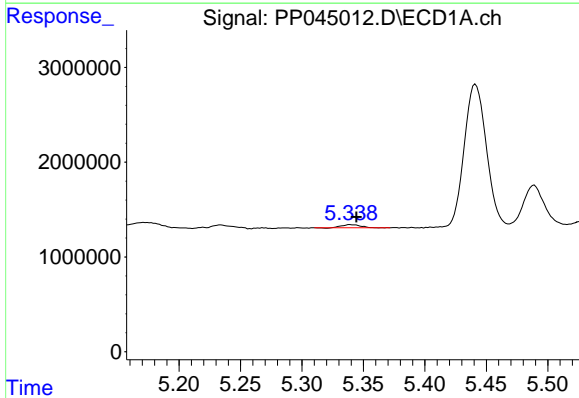
R.T.: 5.234 min
 Delta R.T.: -0.005 min
 Response: 552309
 Conc: 10.61 ng/ml

Instrument :
 ECD_P
 ClientSampleId :



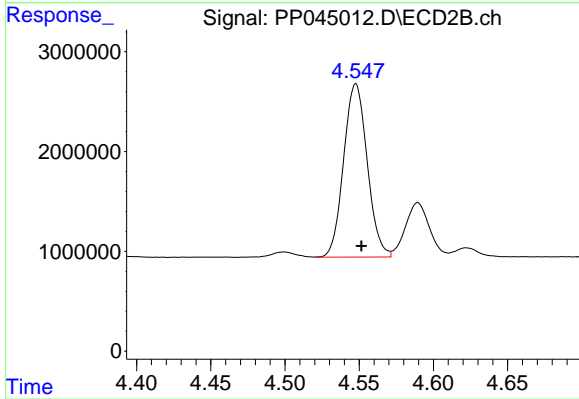
#5 AR-1016-3

R.T.: 4.500 min
 Delta R.T.: -0.003 min
 Response: 575215
 Conc: 14.62 ng/ml



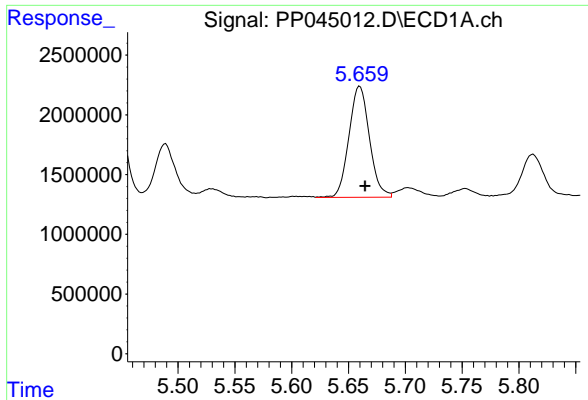
#6 AR-1016-4

R.T.: 5.339 min
 Delta R.T.: -0.005 min
 Response: 335196
 Conc: 7.83 ng/ml



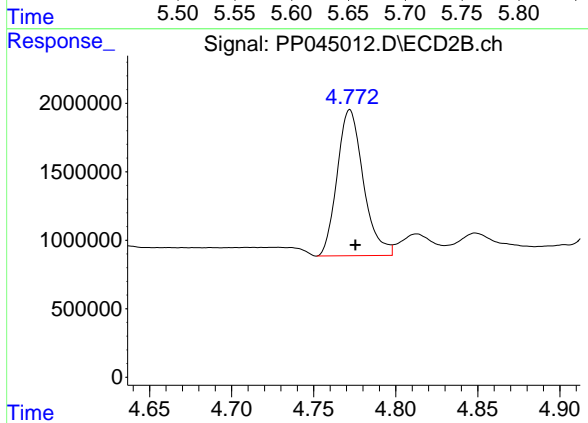
#6 AR-1016-4

R.T.: 4.548 min
 Delta R.T.: -0.004 min
 Response: 19226652
 Conc: 610.69 ng/ml

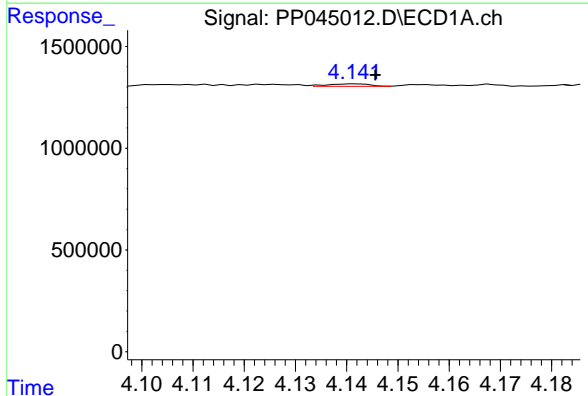


#7 AR-1016-5
 R.T.: 5.660 min
 Delta R.T.: -0.005 min
 Response: 11679255
 Conc: 266.13 ng/ml

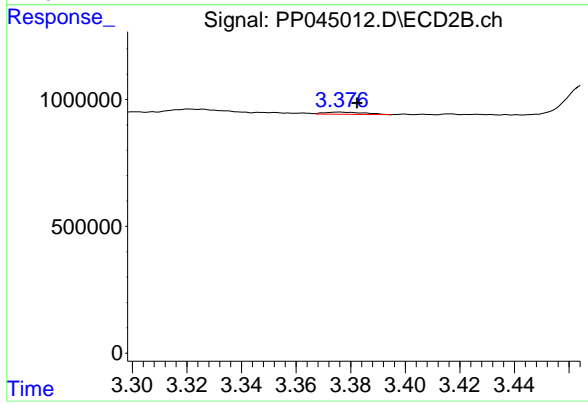
Instrument :
 ECD_P
 ClientSampleId :



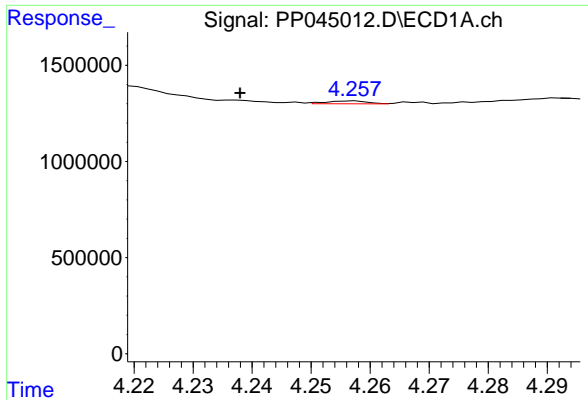
#7 AR-1016-5
 R.T.: 4.772 min
 Delta R.T.: -0.003 min
 Response: 11857054
 Conc: 297.06 ng/ml



#8 AR-1221-1
 R.T.: 4.142 min
 Delta R.T.: -0.004 min
 Response: 68812
 Conc: 3.35 ng/ml



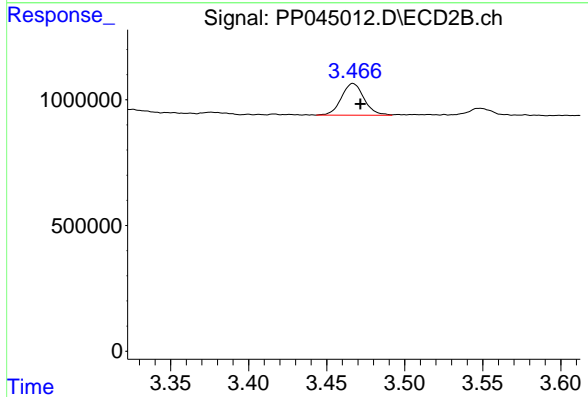
#8 AR-1221-1
 R.T.: 3.376 min
 Delta R.T.: -0.006 min
 Response: 87328
 Conc: 5.88 ng/ml



#9 AR-1221-2

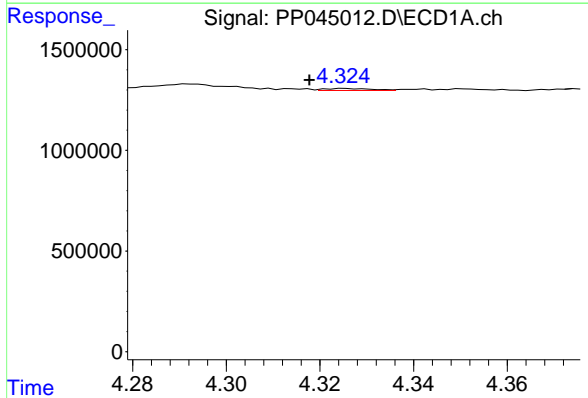
R.T.: 4.257 min
 Delta R.T.: 0.019 min
 Response: 73091
 Conc: 4.78 ng/ml

Instrument :
 ECD_P
 ClientSampleId :



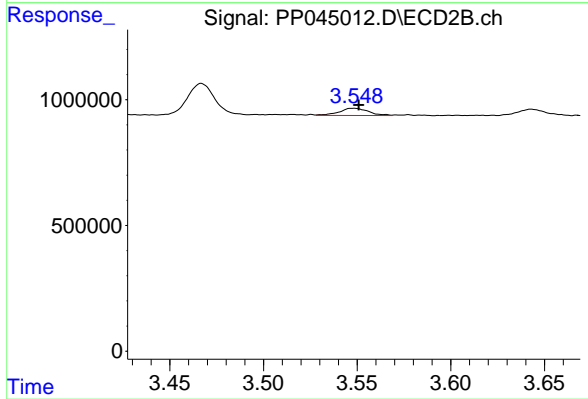
#9 AR-1221-2

R.T.: 3.467 min
 Delta R.T.: -0.005 min
 Response: 1281078
 Conc: 103.41 ng/ml



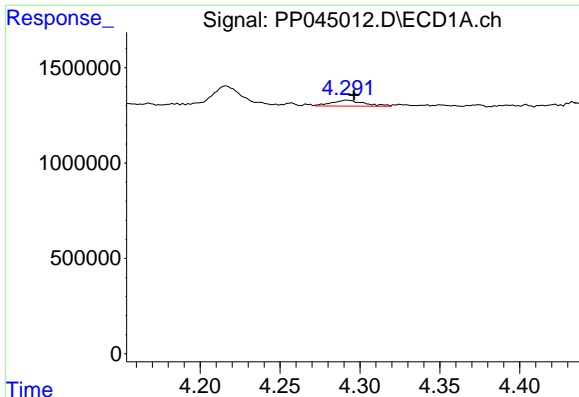
#10 AR-1221-3

R.T.: 4.325 min
 Delta R.T.: 0.008 min
 Response: 70388
 Conc: 1.46 ng/ml



#10 AR-1221-3

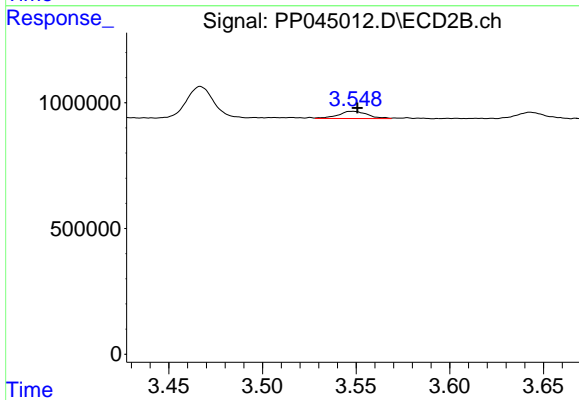
R.T.: 3.549 min
 Delta R.T.: -0.002 min
 Response: 316875
 Conc: 8.16 ng/ml



#11 AR-1232-1

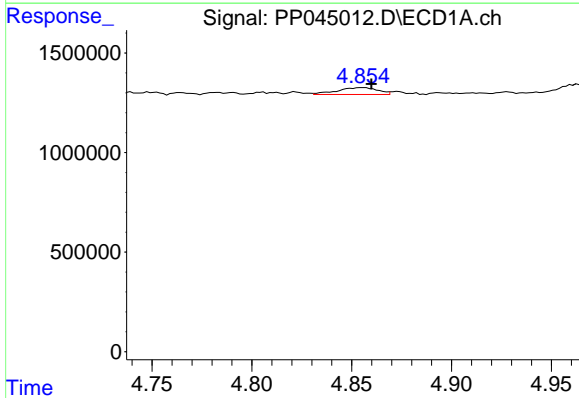
R.T.: 4.292 min
 Delta R.T.: -0.004 min
 Response: 444284
 Conc: 9.87 ng/ml

Instrument :
 ECD_P
 ClientSampleId :



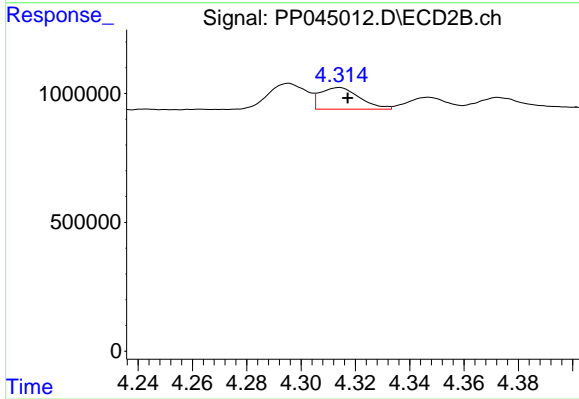
#11 AR-1232-1

R.T.: 3.549 min
 Delta R.T.: -0.002 min
 Response: 316875
 Conc: 8.82 ng/ml



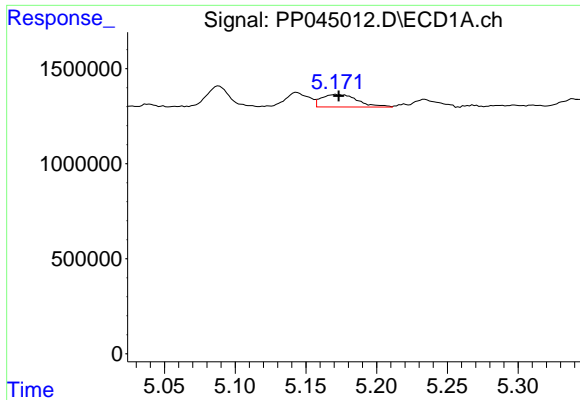
#12 AR-1232-2

R.T.: 4.856 min
 Delta R.T.: -0.004 min
 Response: 488270
 Conc: 23.24 ng/ml



#12 AR-1232-2

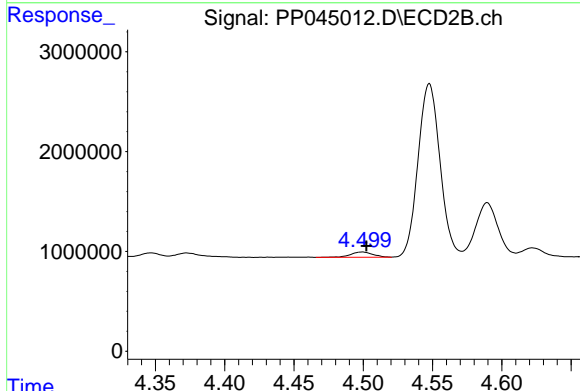
R.T.: 4.314 min
 Delta R.T.: -0.003 min
 Response: 844277
 Conc: 24.41 ng/ml



#13 AR-1232-3

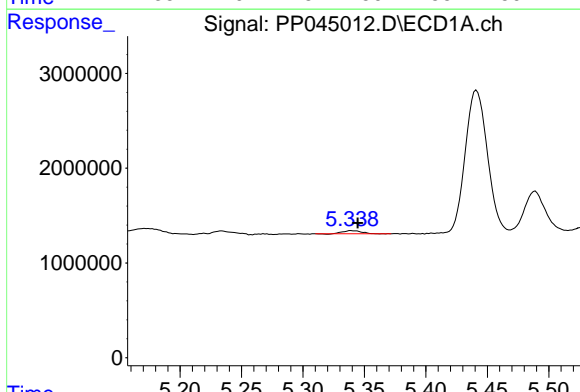
R.T.: 5.171 min
 Delta R.T.: -0.002 min
 Response: 1170574
 Conc: 28.06 ng/ml

Instrument :
 ECD_P
 ClientSampleId :



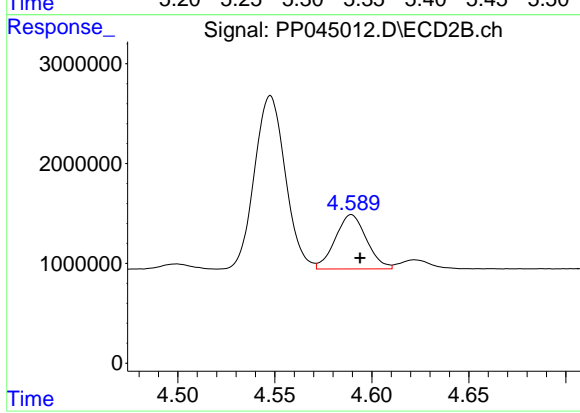
#13 AR-1232-3

R.T.: 4.500 min
 Delta R.T.: -0.003 min
 Response: 575215
 Conc: 30.71 ng/ml



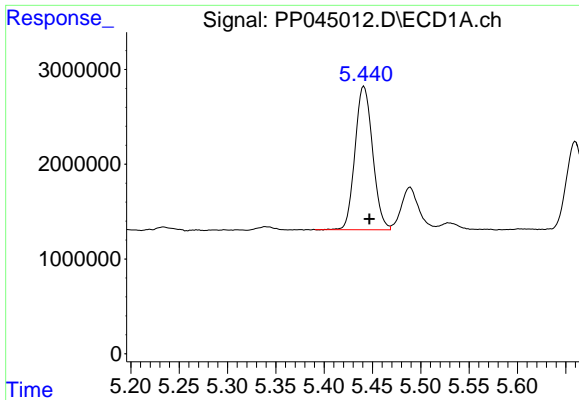
#14 AR-1232-4

R.T.: 5.339 min
 Delta R.T.: -0.006 min
 Response: 335196
 Conc: 16.76 ng/ml



#14 AR-1232-4

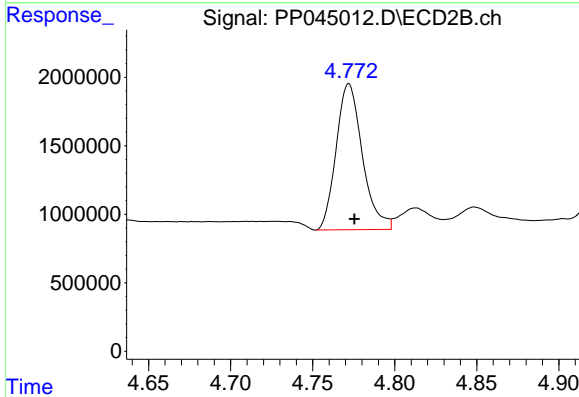
R.T.: 4.590 min
 Delta R.T.: -0.004 min
 Response: 6122907
 Conc: 369.87 ng/ml



#15 AR-1232-5

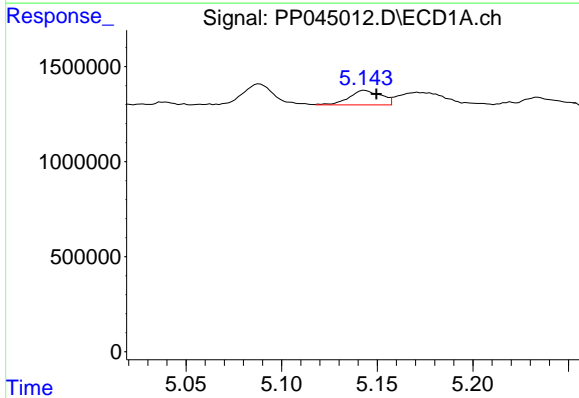
R.T.: 5.441 min
 Delta R.T.: -0.006 min
 Response: 19206882
 Conc: 1359.22 ng/ml

Instrument :
 ECD_P
 ClientSampleId :



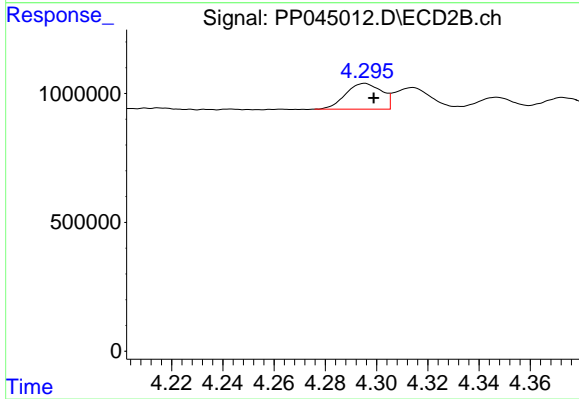
#15 AR-1232-5

R.T.: 4.772 min
 Delta R.T.: -0.003 min
 Response: 11857054
 Conc: 641.26 ng/ml



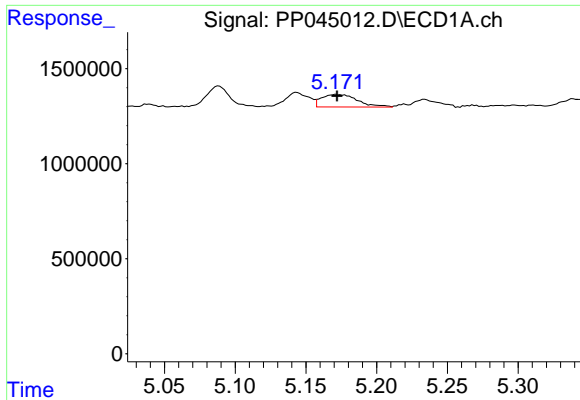
#16 AR-1242-1

R.T.: 5.143 min
 Delta R.T.: -0.006 min
 Response: 892224
 Conc: 19.44 ng/ml



#16 AR-1242-1

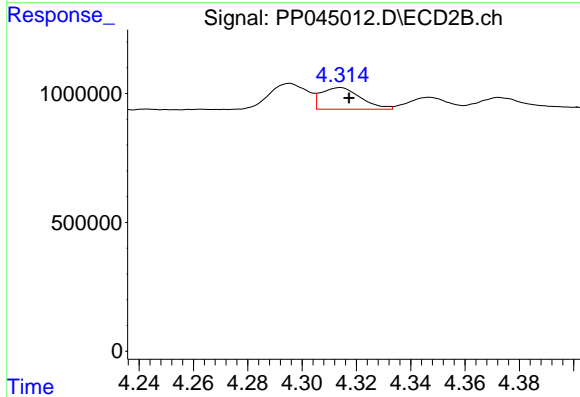
R.T.: 4.295 min
 Delta R.T.: -0.003 min
 Response: 971076
 Conc: 24.31 ng/ml



#17 AR-1242-2

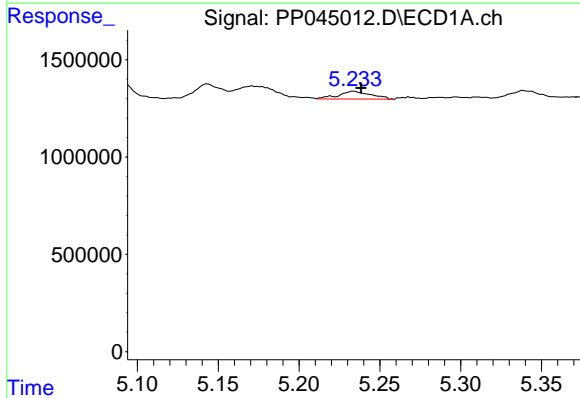
R.T.: 5.171 min
 Delta R.T.: 0.000 min
 Response: 1170574
 Conc: 16.72 ng/ml

Instrument :
 ECD_P
 ClientSampleId :



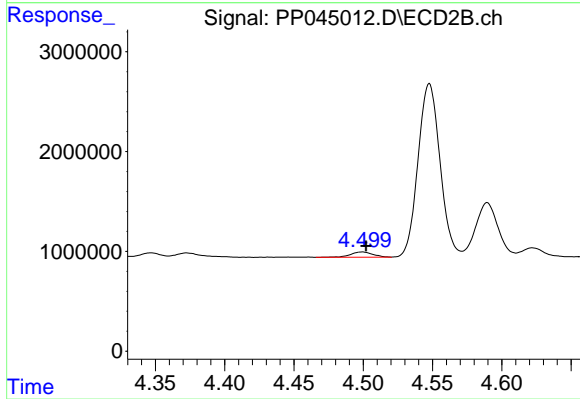
#17 AR-1242-2

R.T.: 4.314 min
 Delta R.T.: -0.003 min
 Response: 844277
 Conc: 14.87 ng/ml



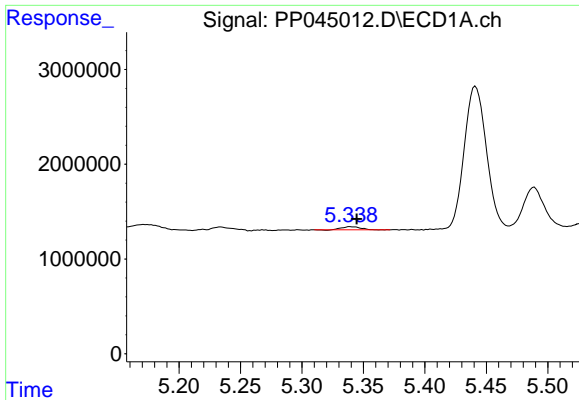
#18 AR-1242-3

R.T.: 5.234 min
 Delta R.T.: -0.004 min
 Response: 552309
 Conc: 13.45 ng/ml



#18 AR-1242-3

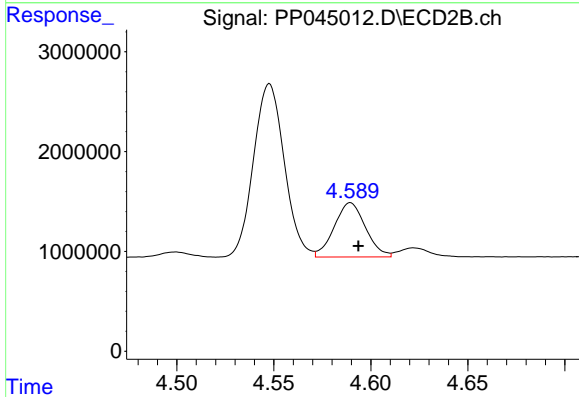
R.T.: 4.500 min
 Delta R.T.: -0.003 min
 Response: 575215
 Conc: 18.45 ng/ml



#19 AR-1242-4

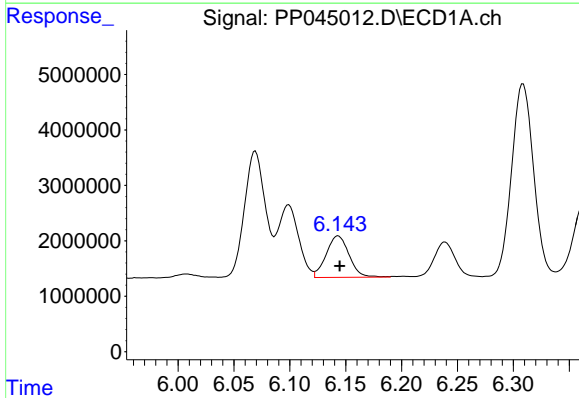
R.T.: 5.339 min
 Delta R.T.: -0.005 min
 Response: 335196
 Conc: 9.75 ng/ml

Instrument :
 ECD_P
 ClientSampleId :



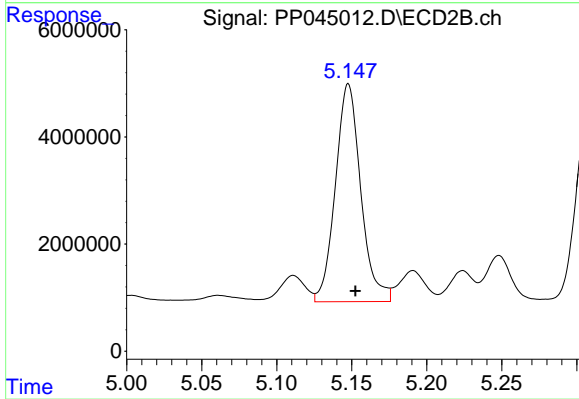
#19 AR-1242-4

R.T.: 4.590 min
 Delta R.T.: -0.004 min
 Response: 6122907
 Conc: 202.08 ng/ml



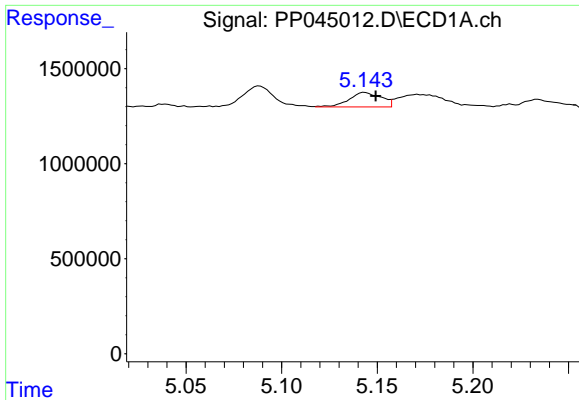
#20 AR-1242-5

R.T.: 6.143 min
 Delta R.T.: -0.001 min
 Response: 10692459
 Conc: 292.40 ng/ml



#20 AR-1242-5

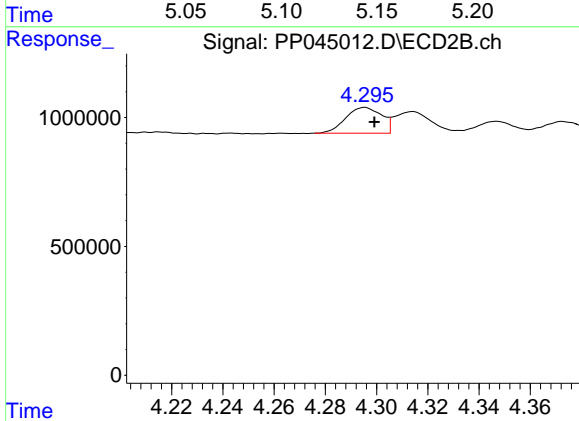
R.T.: 5.148 min
 Delta R.T.: -0.005 min
 Response: 47904833
 Conc: 1204.24 ng/ml



#21 AR-1248-1

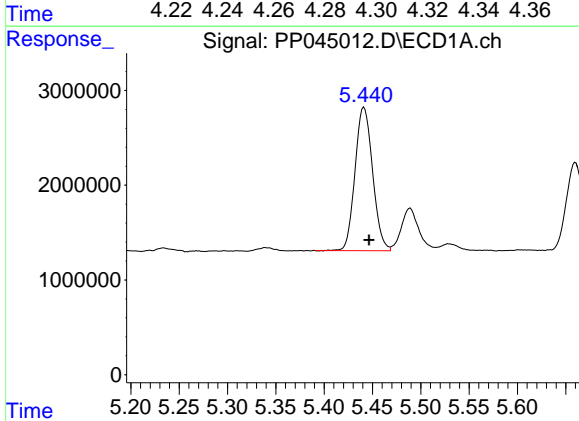
R.T.: 5.143 min
 Delta R.T.: -0.006 min
 Response: 892224
 Conc: 25.37 ng/ml

Instrument :
 ECD_P
 ClientSampleId :



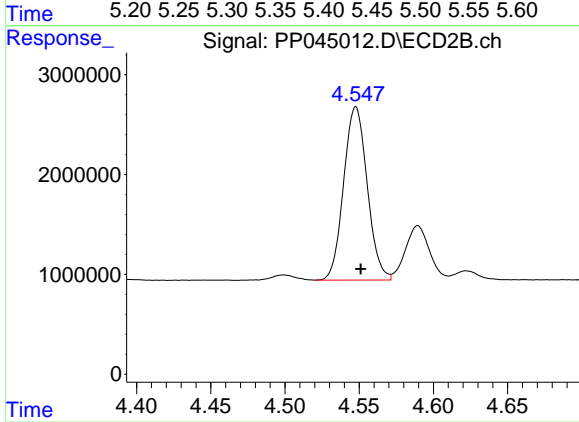
#21 AR-1248-1

R.T.: 4.295 min
 Delta R.T.: -0.004 min
 Response: 971076
 Conc: 30.75 ng/ml



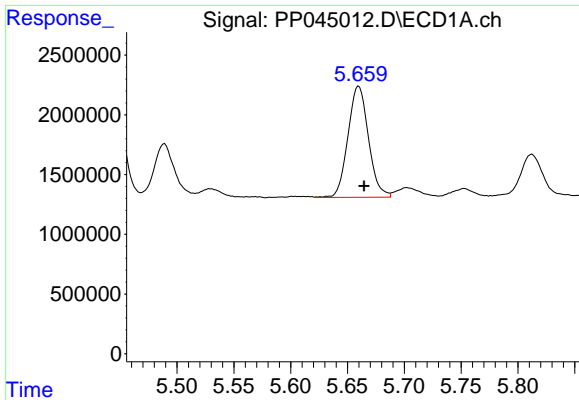
#22 AR-1248-2

R.T.: 5.441 min
 Delta R.T.: -0.005 min
 Response: 19206882
 Conc: 406.02 ng/ml



#22 AR-1248-2

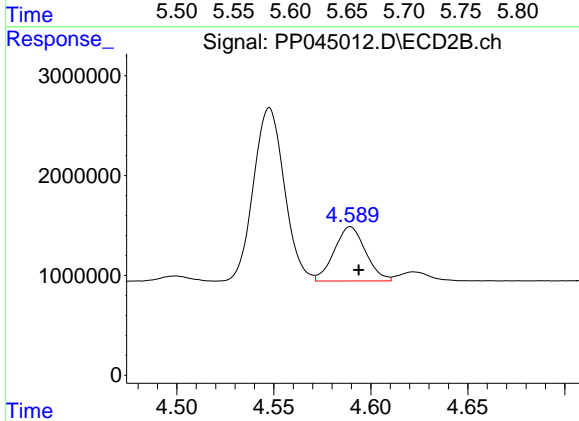
R.T.: 4.548 min
 Delta R.T.: -0.003 min
 Response: 19226652
 Conc: 439.63 ng/ml



#23 AR-1248-3

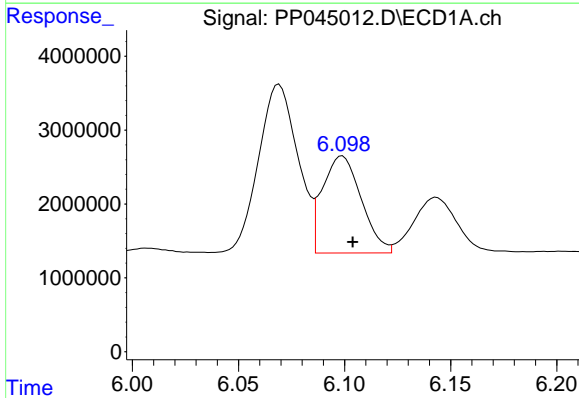
R.T.: 5.660 min
 Delta R.T.: -0.004 min
 Response: 11679255
 Conc: 197.66 ng/ml

Instrument :
 ECD_P
 ClientSampleId :



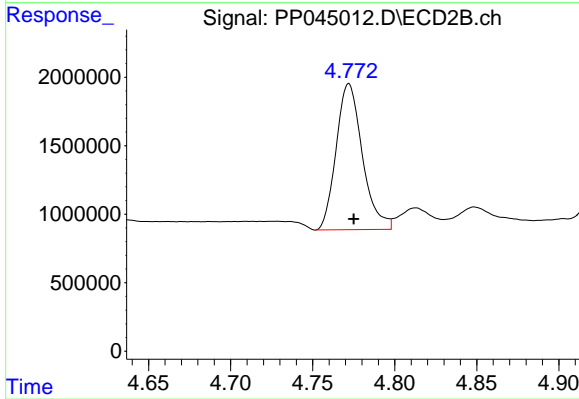
#23 AR-1248-3

R.T.: 4.590 min
 Delta R.T.: -0.004 min
 Response: 6122907
 Conc: 134.00 ng/ml



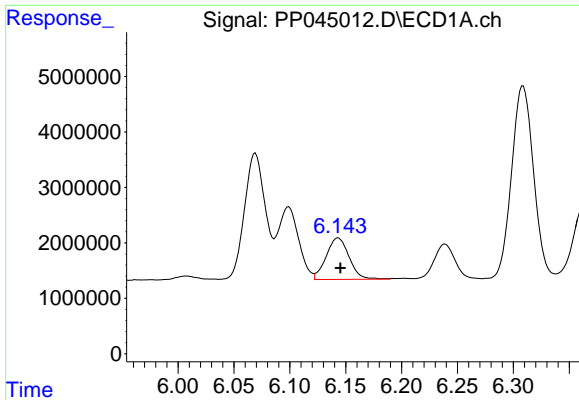
#24 AR-1248-4

R.T.: 6.099 min
 Delta R.T.: -0.005 min
 Response: 16698441
 Conc: 263.13 ng/ml



#24 AR-1248-4

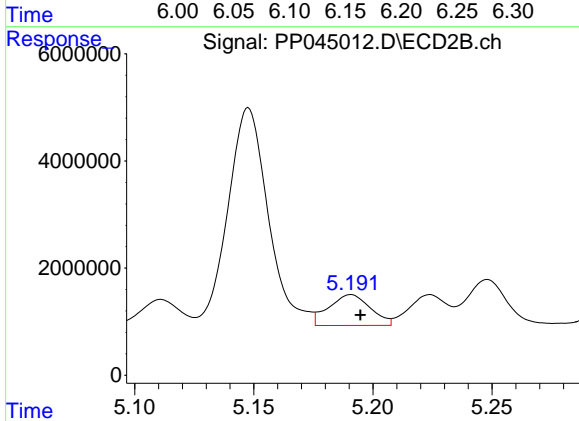
R.T.: 4.772 min
 Delta R.T.: -0.003 min
 Response: 11857054
 Conc: 219.49 ng/ml



#25 AR-1248-5

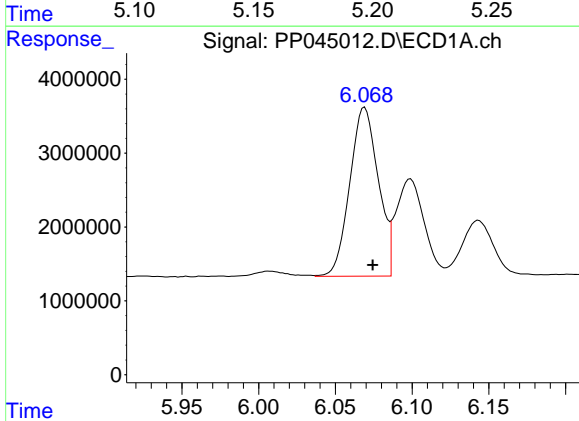
R.T.: 6.143 min
 Delta R.T.: -0.002 min
 Response: 10692459
 Conc: 171.37 ng/ml

Instrument :
 ECD_P
 ClientSampleId :



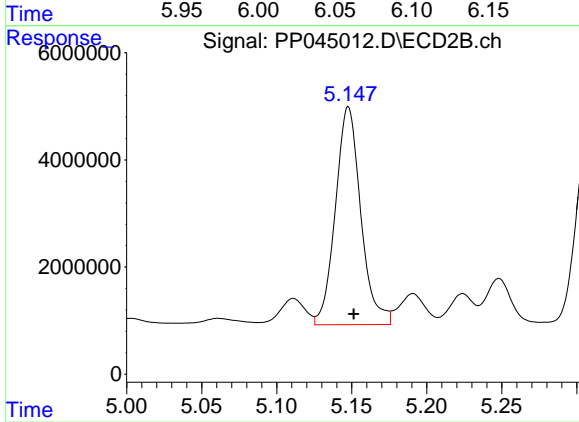
#25 AR-1248-5

R.T.: 5.191 min
 Delta R.T.: -0.004 min
 Response: 7029473
 Conc: 125.21 ng/ml



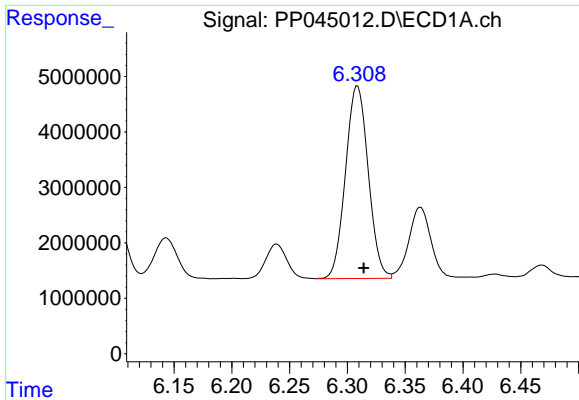
#26 AR-1254-1

R.T.: 6.069 min
 Delta R.T.: -0.005 min
 Response: 29617927
 Conc: 446.06 ng/ml



#26 AR-1254-1

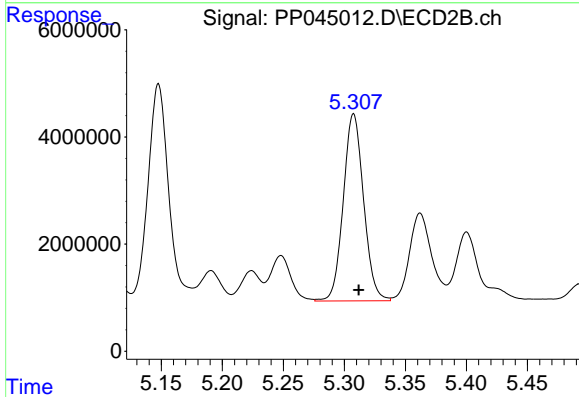
R.T.: 5.148 min
 Delta R.T.: -0.004 min
 Response: 47904833
 Conc: 553.97 ng/ml



#27 AR-1254-2

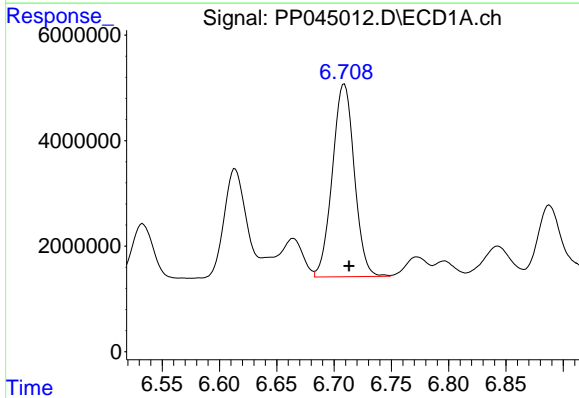
R.T.: 6.309 min
Delta R.T.: -0.005 min
Response: 47438901
Conc: 474.81 ng/ml

Instrument :
ECD_P
ClientSampleId :



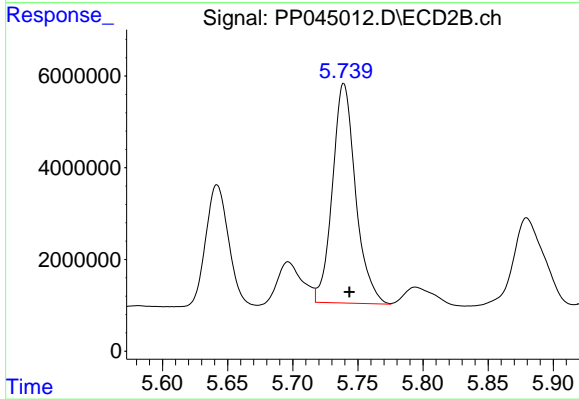
#27 AR-1254-2

R.T.: 5.308 min
Delta R.T.: -0.004 min
Response: 40491858
Conc: 544.15 ng/ml



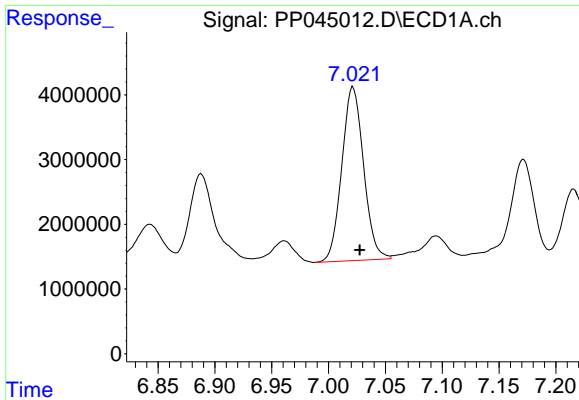
#28 AR-1254-3

R.T.: 6.709 min
Delta R.T.: -0.004 min
Response: 48686967
Conc: 476.02 ng/ml



#28 AR-1254-3

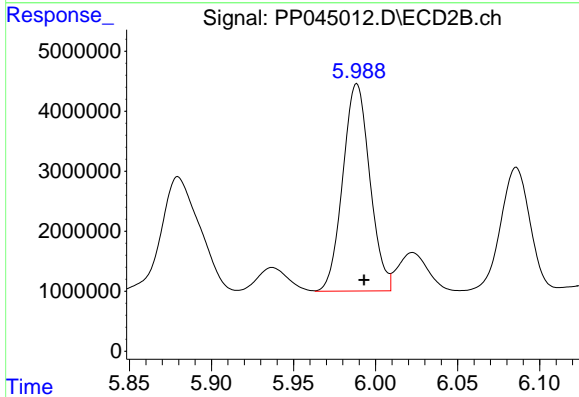
R.T.: 5.739 min
Delta R.T.: -0.004 min
Response: 59327758
Conc: 516.34 ng/ml



#29 AR-1254-4

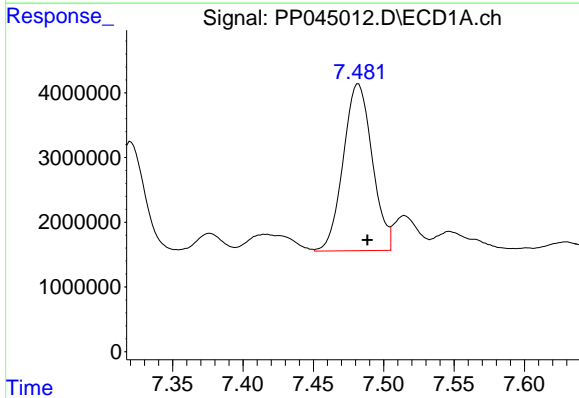
R.T.: 7.022 min
 Delta R.T.: -0.006 min
 Response: 35814210
 Conc: 492.40 ng/ml

Instrument :
 ECD_P
 ClientSampleId :



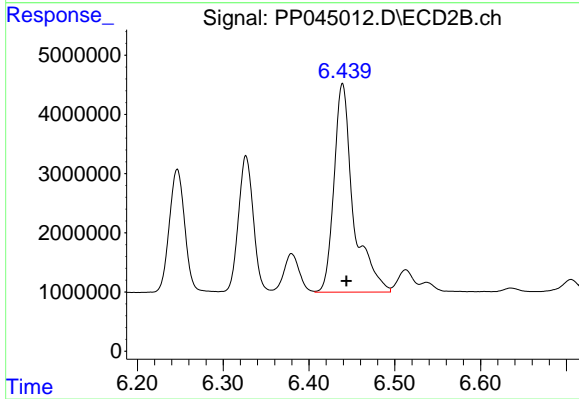
#29 AR-1254-4

R.T.: 5.989 min
 Delta R.T.: -0.004 min
 Response: 39635984
 Conc: 531.63 ng/ml



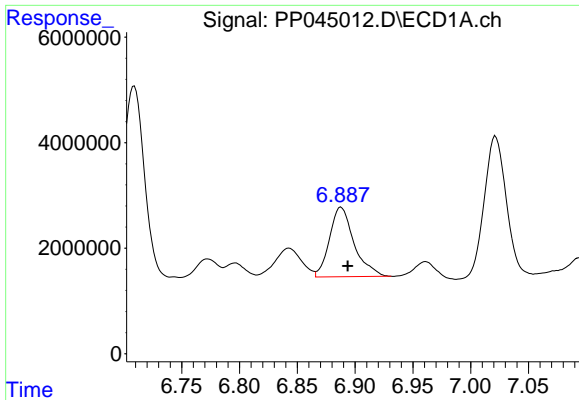
#30 AR-1254-5

R.T.: 7.482 min
 Delta R.T.: -0.006 min
 Response: 36921845
 Conc: 477.38 ng/ml



#30 AR-1254-5

R.T.: 6.439 min
 Delta R.T.: -0.005 min
 Response: 55210768
 Conc: 536.17 ng/ml

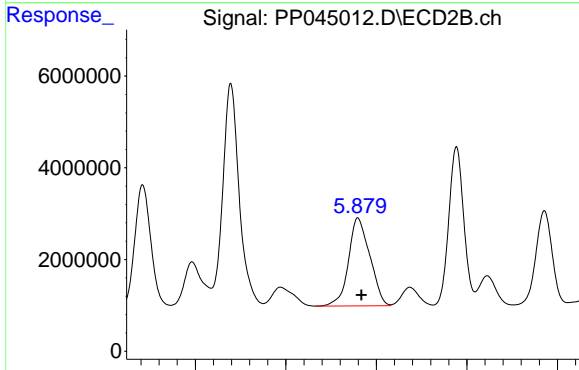


#31 AR-1260-1

R.T.: 6.888 min
 Delta R.T.: -0.006 min
 Response: 19553598
 Conc: 284.02 ng/ml

Instrument :
 ECD_P
 ClientSampleId :

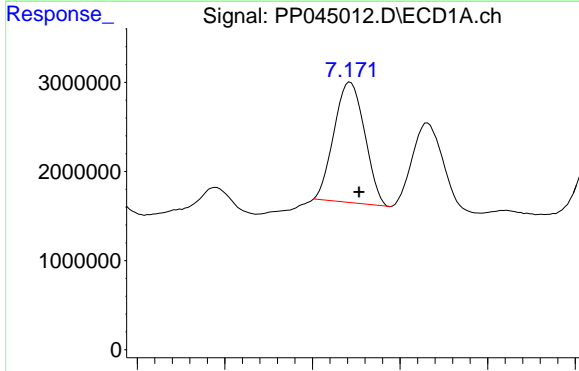
Time



#31 AR-1260-1

R.T.: 5.880 min
 Delta R.T.: -0.004 min
 Response: 31404511
 Conc: 446.02 ng/ml

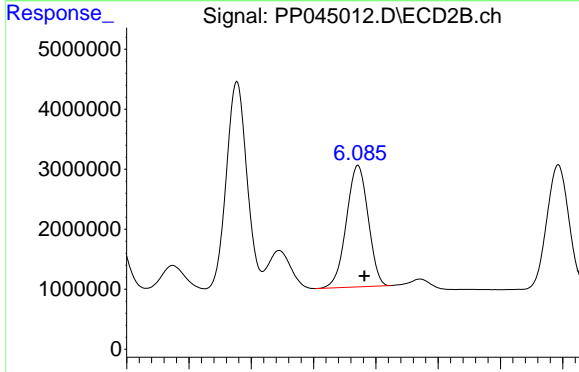
Time



#32 AR-1260-2

R.T.: 7.172 min
 Delta R.T.: -0.005 min
 Response: 16398402
 Conc: 211.21 ng/ml

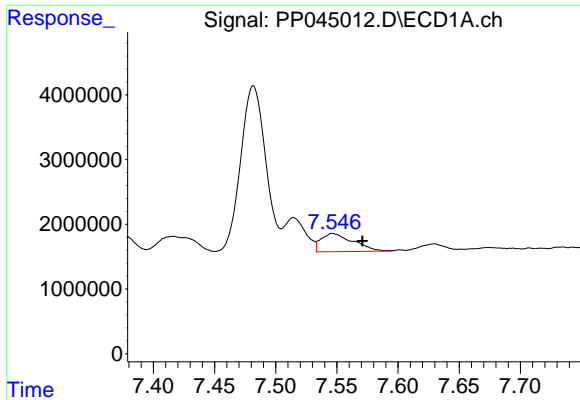
Time



#32 AR-1260-2

R.T.: 6.086 min
 Delta R.T.: -0.005 min
 Response: 24623991
 Conc: 275.35 ng/ml

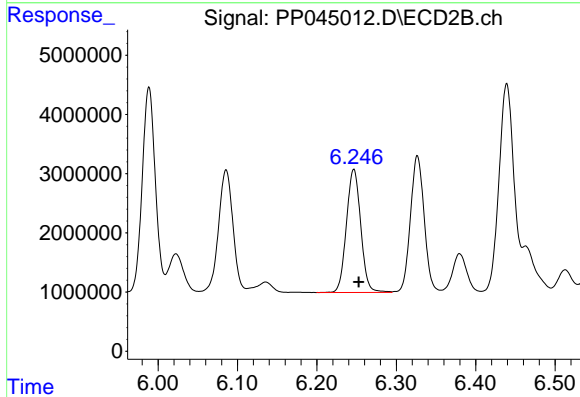
Time



#33 AR-1260-3

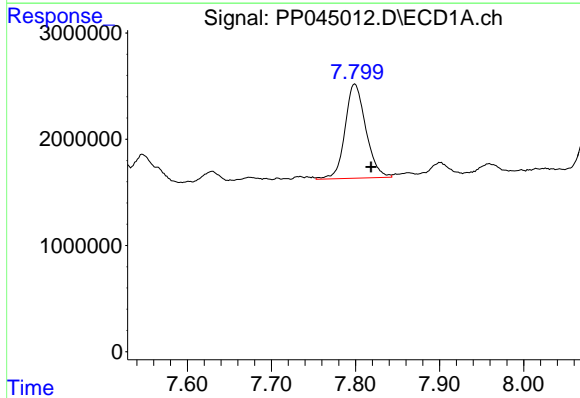
R.T.: 7.547 min
 Delta R.T.: -0.024 min
 Response: 5185542
 Conc: 82.41 ng/ml

Instrument :
 ECD_P
 ClientSampleId :



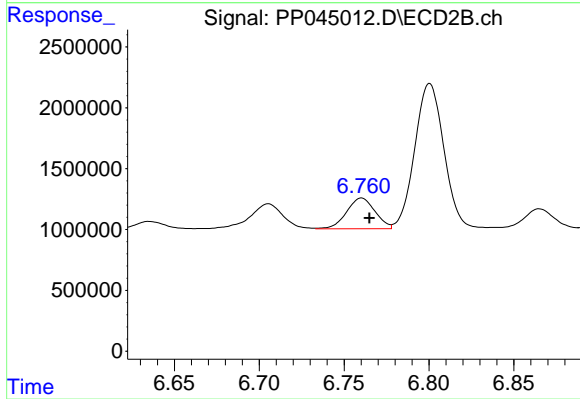
#33 AR-1260-3

R.T.: 6.247 min
 Delta R.T.: -0.006 min
 Response: 26162271
 Conc: 307.18 ng/ml



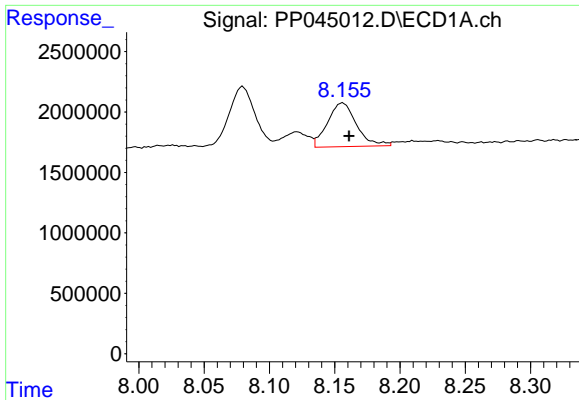
#34 AR-1260-4

R.T.: 7.799 min
 Delta R.T.: -0.019 min
 Response: 15213725
 Conc: 207.40 ng/ml



#34 AR-1260-4

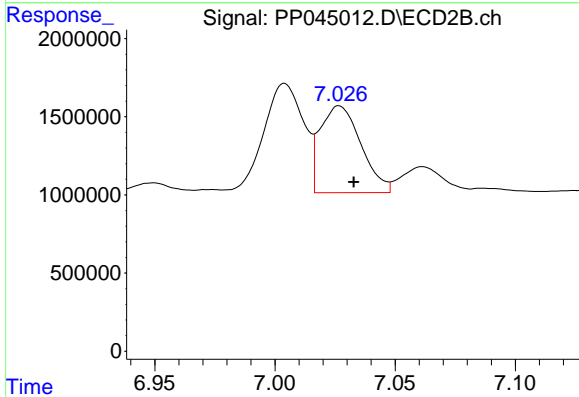
R.T.: 6.760 min
 Delta R.T.: -0.005 min
 Response: 2936664
 Conc: 43.70 ng/ml



#35 AR-1260-5

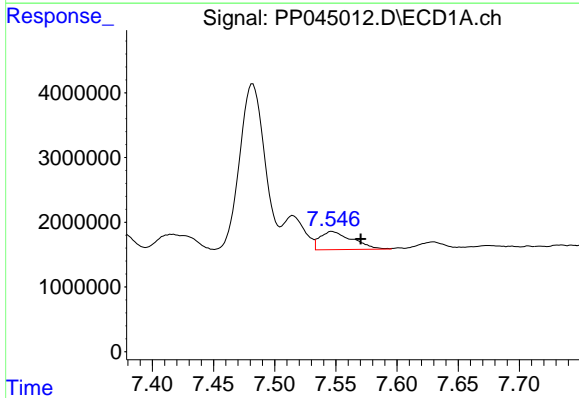
R.T.: 8.156 min
 Delta R.T.: -0.005 min
 Response: 5594769
 Conc: 39.95 ng/ml

Instrument :
 ECD_P
 ClientSampleId :



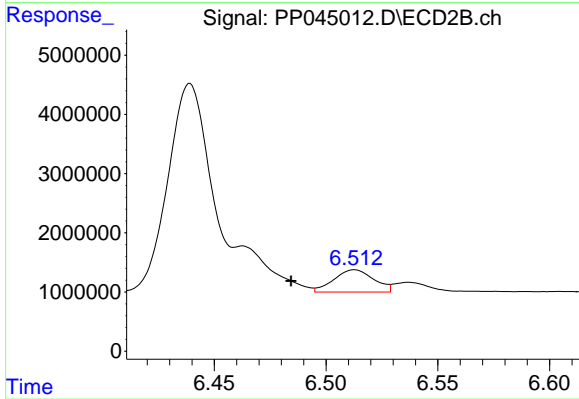
#35 AR-1260-5

R.T.: 7.027 min
 Delta R.T.: -0.006 min
 Response: 6568537
 Conc: 42.04 ng/ml



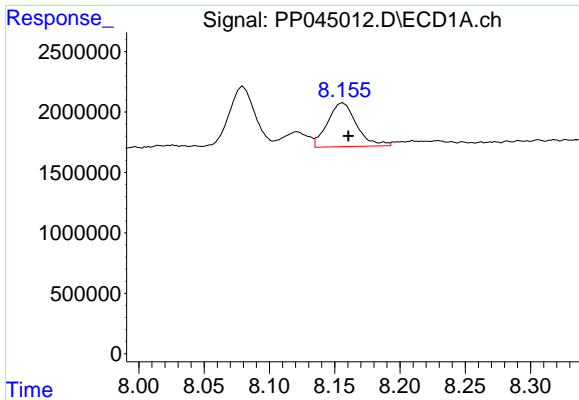
#36 AR-1262-1

R.T.: 7.547 min
 Delta R.T.: -0.024 min
 Response: 5185542
 Conc: 54.69 ng/ml



#36 AR-1262-1

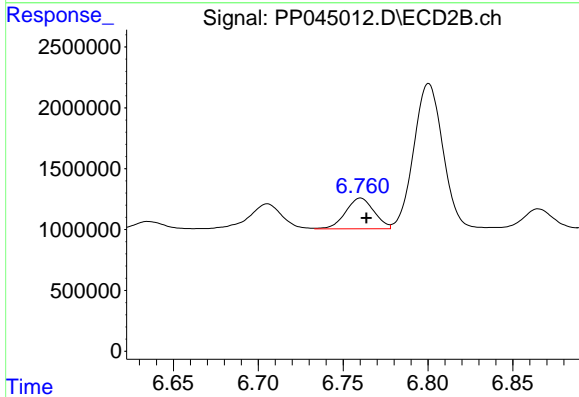
R.T.: 6.513 min
 Delta R.T.: 0.028 min
 Response: 4668878
 Conc: 45.35 ng/ml



#37 AR-1262-2

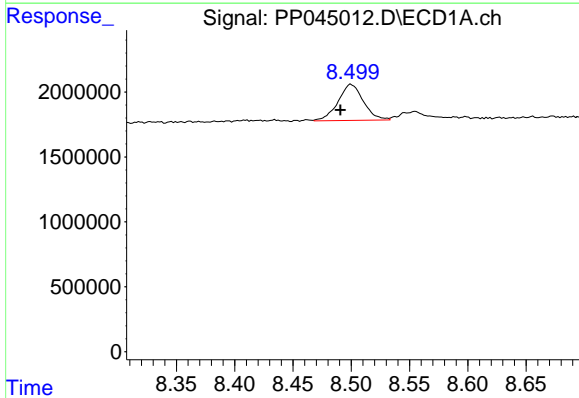
R.T.: 8.156 min
 Delta R.T.: -0.005 min
 Response: 5594769
 Conc: 34.77 ng/ml

Instrument :
 ECD_P
 ClientSampleId :



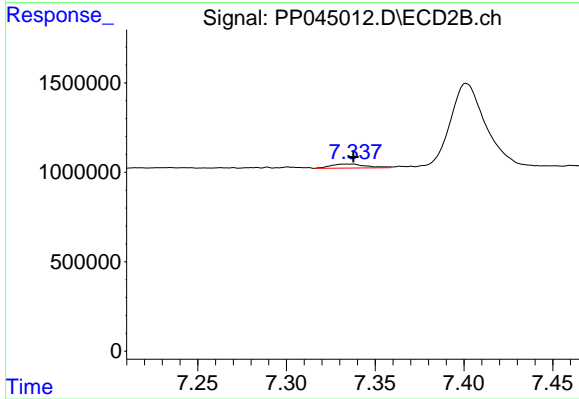
#37 AR-1262-2

R.T.: 6.760 min
 Delta R.T.: -0.003 min
 Response: 2936664
 Conc: 31.82 ng/ml



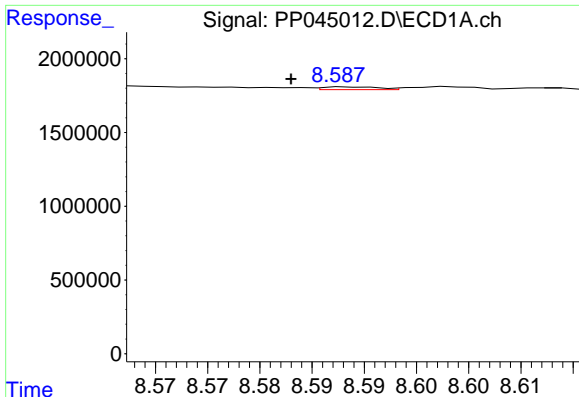
#38 AR-1262-3

R.T.: 8.500 min
 Delta R.T.: 0.009 min
 Response: 4214235
 Conc: 39.07 ng/ml



#38 AR-1262-3

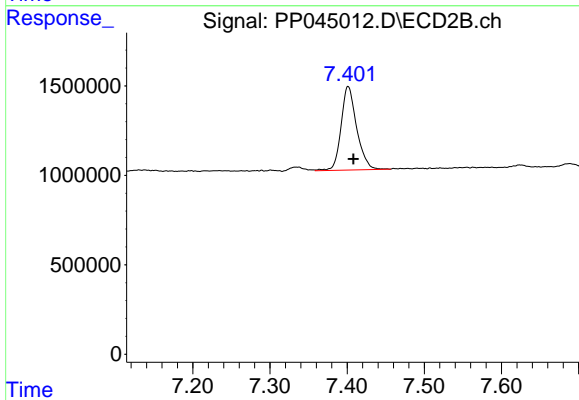
R.T.: 7.336 min
 Delta R.T.: -0.001 min
 Response: 301165
 Conc: 4.14 ng/ml



#39 AR-1262-4

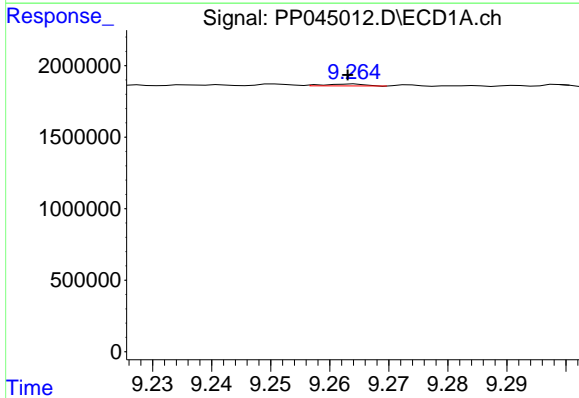
R.T.: 8.589 min
 Delta R.T.: 0.006 min
 Response: 71179
 Conc: 1.39 ng/ml

Instrument :
 ECD_P
 ClientSampleId :



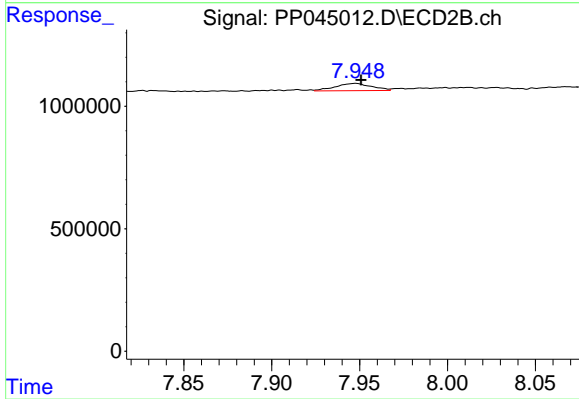
#39 AR-1262-4

R.T.: 7.401 min
 Delta R.T.: -0.007 min
 Response: 6537984
 Conc: 48.64 ng/ml



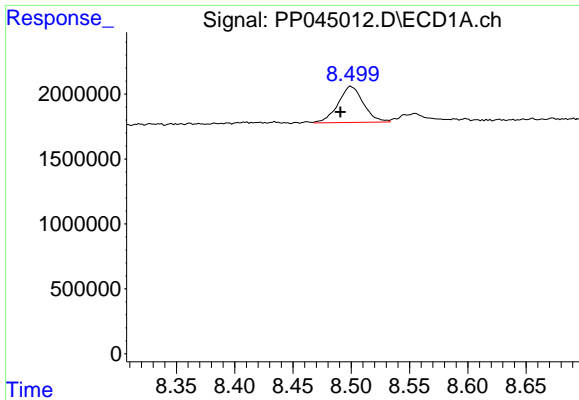
#40 AR-1262-5

R.T.: 9.264 min
 Delta R.T.: 0.000 min
 Response: 63888
 Conc: 1.14 ng/ml



#40 AR-1262-5

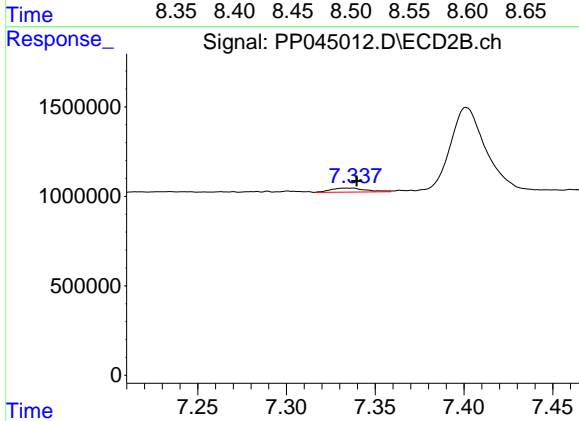
R.T.: 7.948 min
 Delta R.T.: -0.003 min
 Response: 422473
 Conc: 6.42 ng/ml



#41 AR-1268-1

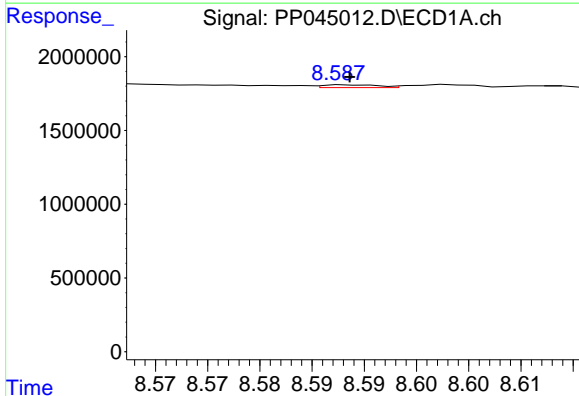
R.T.: 8.500 min
 Delta R.T.: 0.009 min
 Response: 4214235
 Conc: 21.89 ng/ml

Instrument :
 ECD_P
 ClientSampleId :



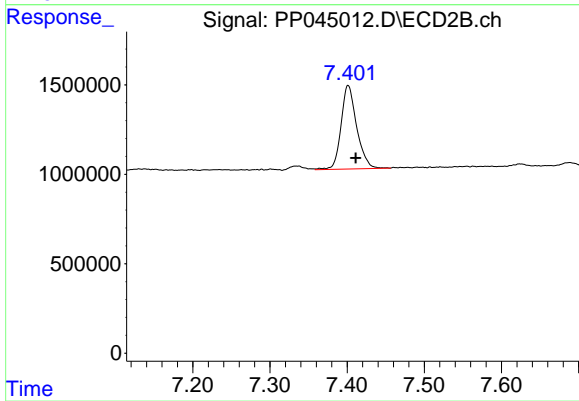
#41 AR-1268-1

R.T.: 7.336 min
 Delta R.T.: -0.003 min
 Response: 301165
 Conc: 1.40 ng/ml



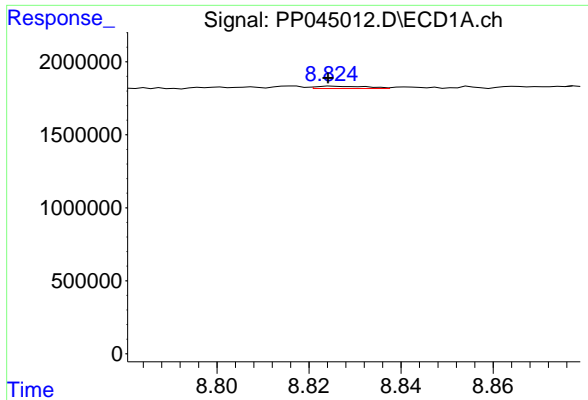
#42 AR-1268-2

R.T.: 8.589 min
 Delta R.T.: 0.000 min
 Response: 71179
 Conc: 0.41 ng/ml



#42 AR-1268-2

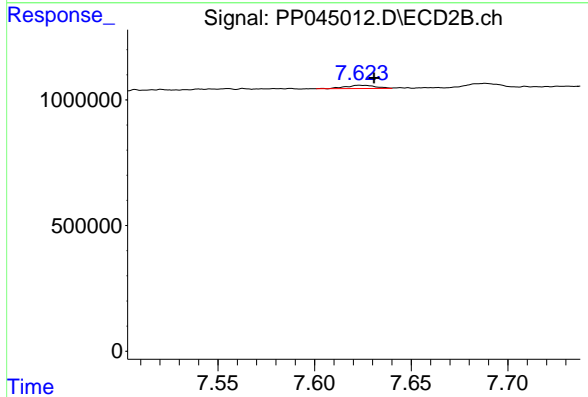
R.T.: 7.401 min
 Delta R.T.: -0.009 min
 Response: 6537984
 Conc: 33.43 ng/ml



#43 AR-1268-3

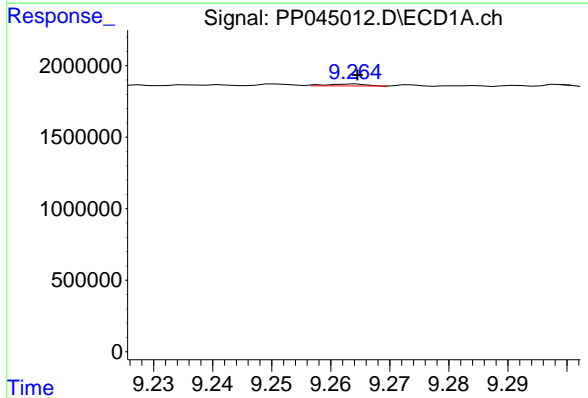
R.T.: 8.825 min
 Delta R.T.: 0.001 min
 Response: 121984
 Conc: 0.80 ng/ml

Instrument :
 ECD_P
 ClientSampleId :



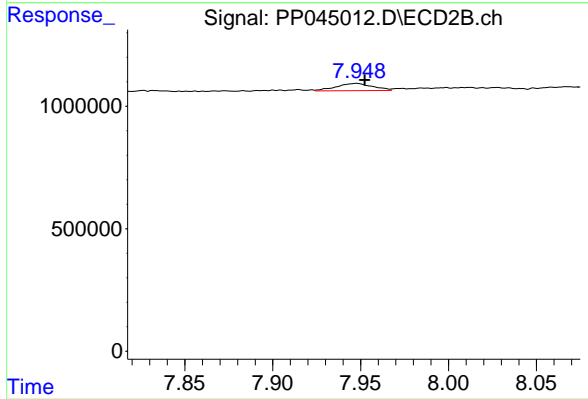
#43 AR-1268-3

R.T.: 7.624 min
 Delta R.T.: -0.007 min
 Response: 139766
 Conc: 0.85 ng/ml



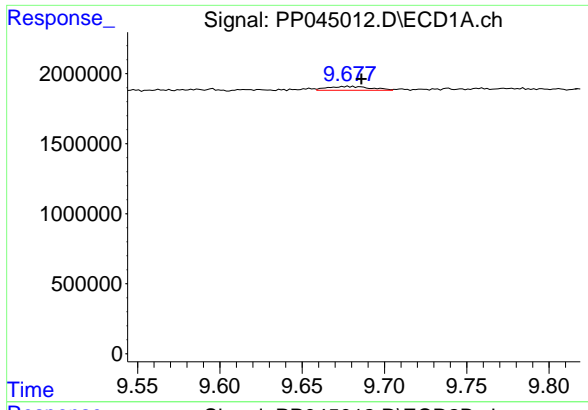
#44 AR-1268-4

R.T.: 9.264 min
 Delta R.T.: 0.000 min
 Response: 63888
 Conc: 1.02 ng/ml



#44 AR-1268-4

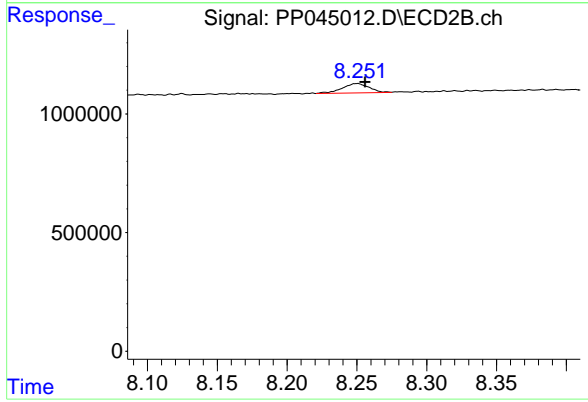
R.T.: 7.948 min
 Delta R.T.: -0.005 min
 Response: 422473
 Conc: 5.52 ng/ml



#45 AR-1268-5

R.T.: 9.678 min
 Delta R.T.: -0.008 min
 Response: 504614
 Conc: 1.05 ng/ml

Instrument :
 ECD_P
 ClientSampleId :



#45 AR-1268-5

R.T.: 8.250 min
 Delta R.T.: -0.006 min
 Response: 529494
 Conc: 1.03 ng/ml