

Data Path : Z:\pestpcbsrv\HPCHEM1\ECD_P\Data\PP032224\
 Data File : PP063684.D
 Signal(s) : Signal #1: ECD1A.ch Signal #2: ECD2B.ch
 Acq On : 21 Mar 2024 16:31
 Operator : YP\AJ
 Sample : AR1254CCC500
 Misc :
 ALS Vial : 6 Sample Multiplier: 1

Instrument :
 ECD_P
ClientSampleId :
 AR1254CCC500

Manual Integrations
APPROVED
 Reviewed By :Yogesh Patel 03/22/2024
 Supervised By :Ankita Jodhani 03/22/2024

Integration File signal 1: autoint1.e
 Integration File signal 2: autoint2.e
 Quant Time: Mar 21 16:46:09 2024
 Quant Method : Z:\pestpcbsrv\HPCHEM1\ECD_P\methods\PP031924.M
 Quant Title : GC EXTRACTABLES
 QLast Update : Tue Mar 19 06:23:02 2024
 Response via : Initial Calibration
 Integrator: ChemStation

Volume Inj. : 2 µl
 Signal #1 Phase : ZB-MR1 Signal #2 Phase: ZB-MR2
 Signal #1 Info : 30Mx0.32mmx 0.50µ Signal #2 Info : 30M x 0.32mm x 0.25µm

Compound	RT#1	RT#2	Resp#1	Resp#2	ng/ml	ng/ml

System Monitoring Compounds						
1) SA Tetrachlo...	4.487	3.638	113.1E6	119.7E6	47.393	50.156
2) SA Decachlor...	10.356	8.677	119.3E6	111.6E6	46.987	41.285
Target Compounds						
26) L6 AR-1254-1	6.535	5.537	45681108	63697953	502.446	515.469
27) L6 AR-1254-2	6.755	5.685	70894510	59267512	517.134	516.357
28) L6 AR-1254-3	7.124	6.091	72037267	87284498	514.752	485.076
29) L6 AR-1254-4	7.412	6.321	46933014	47934946	515.136	520.186
30) L6 AR-1254-5	7.833	6.740	57298435	76982424	487.327m	461.191

(f)=RT Delta > 1/2 Window (#)=Amounts differ by > 25% (m)=manual int.

Data Path : Z:\pestpcbsrv\HPCHEM1\ECD_P\Data\PP032224\
 Data File : PP063684.D
 Signal(s) : Signal #1: ECD1A.ch Signal #2: ECD2B.ch
 Acq On : 21 Mar 2024 16:31
 Operator : YP\AJ
 Sample : AR1254CCC500
 Misc :
 ALS Vial : 6 Sample Multiplier: 1

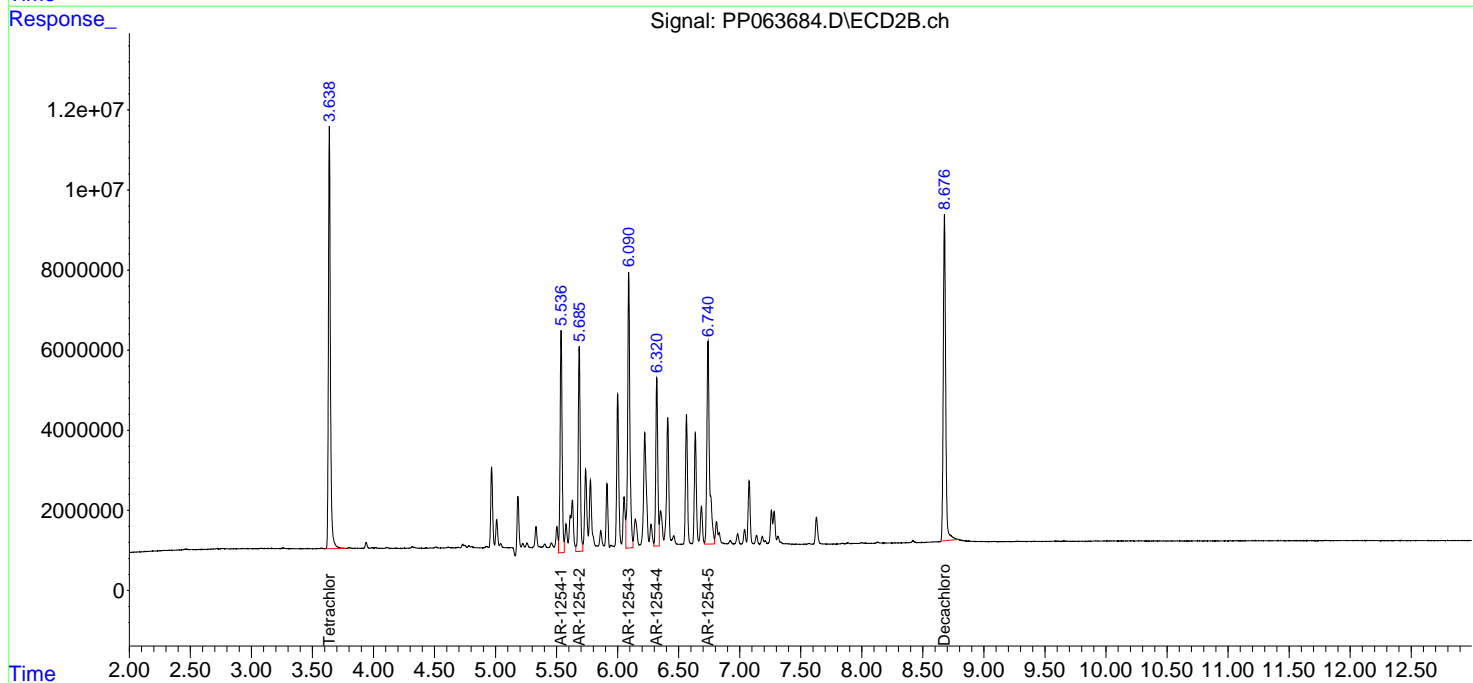
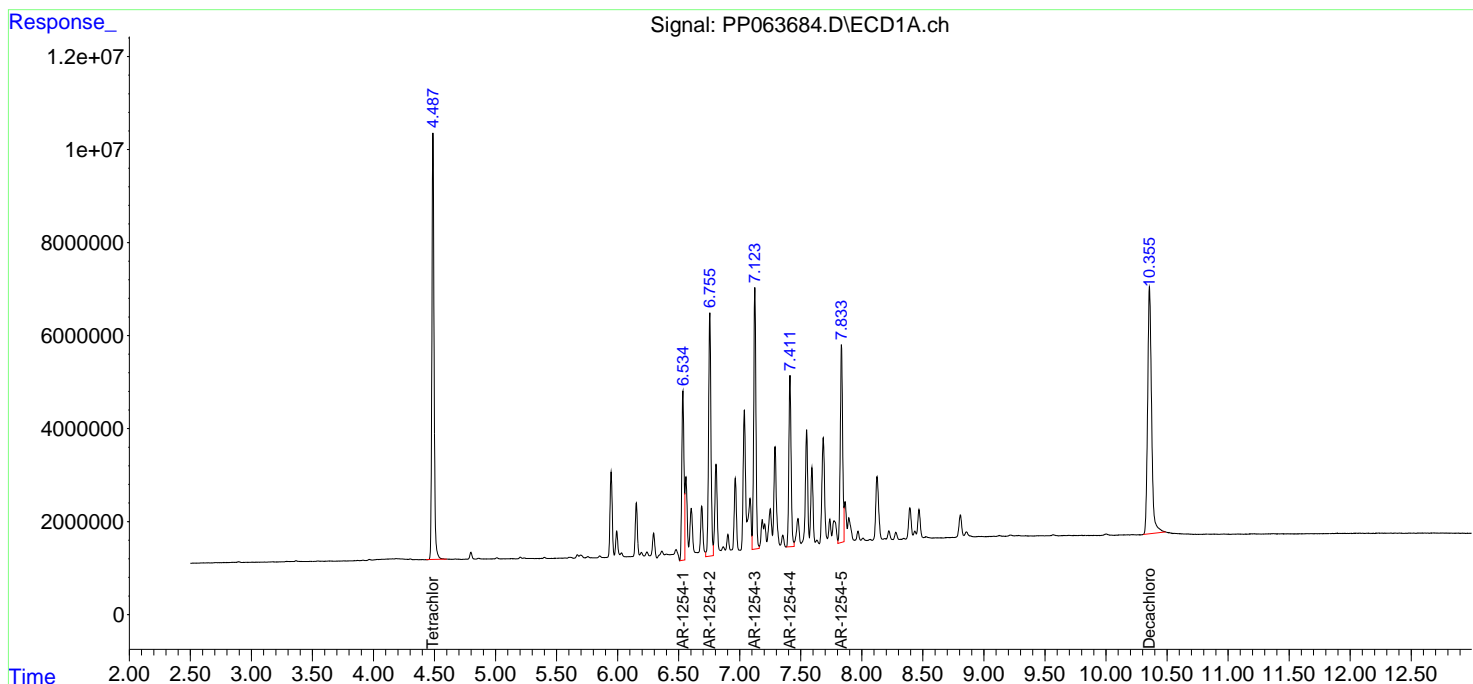
Instrument :
 ECD_P
 ClientSampleId :
 AR1254CCC500

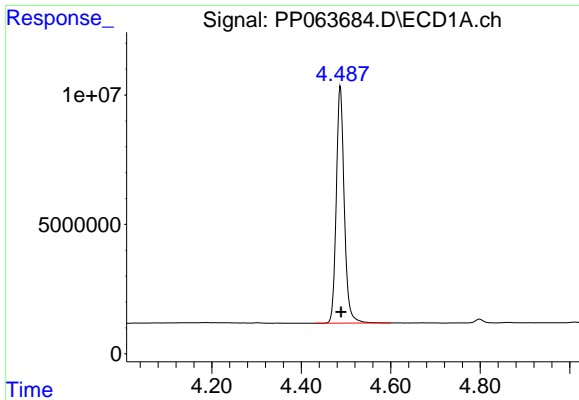
Manual Integrations
APPROVED

Reviewed By :Yogesh Patel 03/22/2024
 Supervised By :Ankita Jodhani 03/22/2024

Integration File signal 1: autoint1.e
 Integration File signal 2: autoint2.e
 Quant Time: Mar 21 16:46:09 2024
 Quant Method : Z:\pestpcbsrv\HPCHEM1\ECD_P\methods\PP031924.M
 Quant Title : GC EXTRACTABLES
 QLast Update : Tue Mar 19 06:23:02 2024
 Response via : Initial Calibration
 Integrator: ChemStation

Volume Inj. : 2 µl
 Signal #1 Phase : ZB-MR1 Signal #2 Phase: ZB-MR2
 Signal #1 Info : 30Mx0.32mmx 0.50µ Signal #2 Info : 30M x 0.32mm x 0.25µm



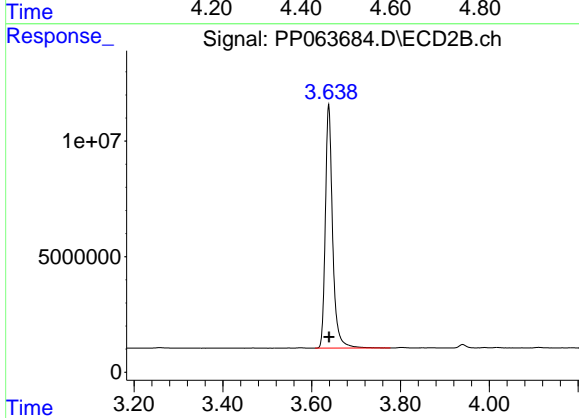


#1 Tetrachloro-m-xylene
 R.T.: 4.487 min
 Delta R.T.: -0.002 min
 Response: 113088290
 Conc: 47.39 ng/ml

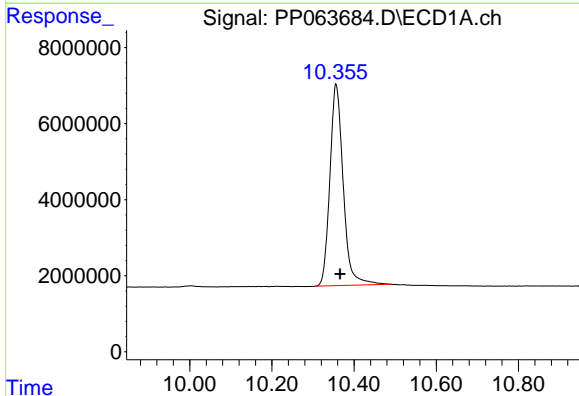
Instrument :
 ECD_P
 ClientSampleId :
 AR1254CCC500

Manual Integrations
 APPROVED

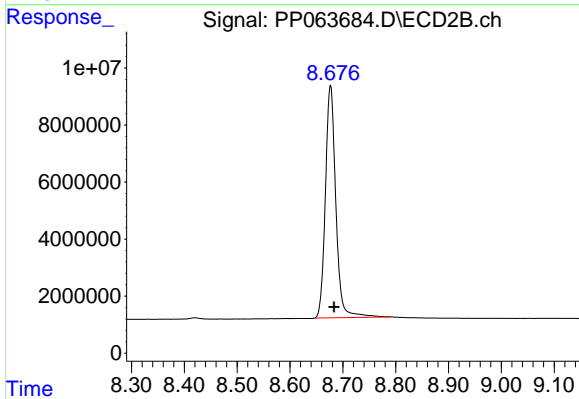
Reviewed By :Yogesh Patel 03/22/2024
 Supervised By :Ankita Jodhani 03/22/2024



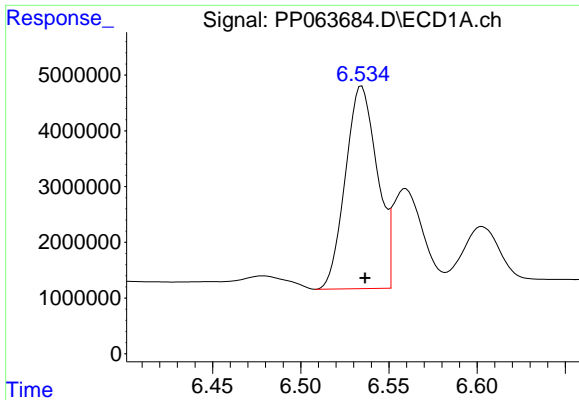
#1 Tetrachloro-m-xylene
 R.T.: 3.638 min
 Delta R.T.: 0.000 min
 Response: 119748012
 Conc: 50.16 ng/ml



#2 Decachlorobiphenyl
 R.T.: 10.356 min
 Delta R.T.: -0.009 min
 Response: 119298946
 Conc: 46.99 ng/ml



#2 Decachlorobiphenyl
 R.T.: 8.677 min
 Delta R.T.: -0.007 min
 Response: 111573434
 Conc: 41.29 ng/ml



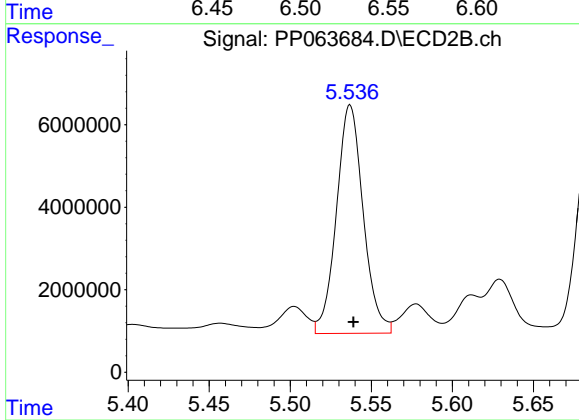
#26 AR-1254-1

R.T.: 6.535 min
 Delta R.T.: -0.002 min
 Response: 45681108
 Conc: 502.45 ng/ml

Instrument :
 ECD_P
 ClientSampleId :
 AR1254CCC500

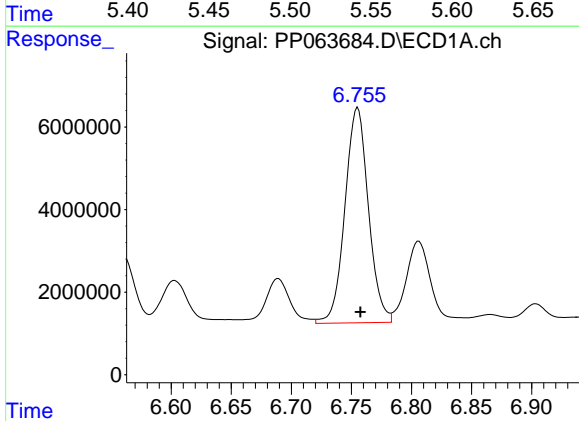
Manual Integrations
 APPROVED

Reviewed By :Yogesh Patel 03/22/2024
 Supervised By :Ankita Jodhani 03/22/2024



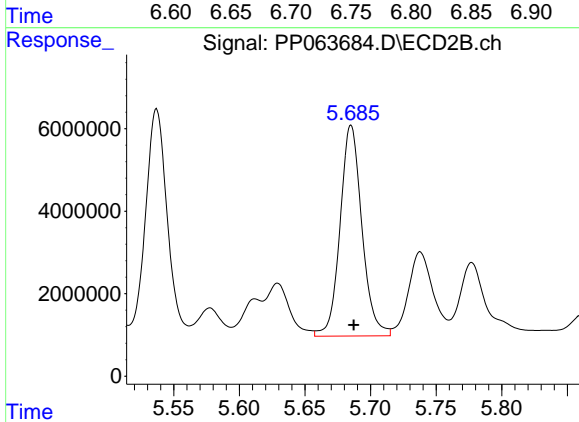
#26 AR-1254-1

R.T.: 5.537 min
 Delta R.T.: -0.002 min
 Response: 63697953
 Conc: 515.47 ng/ml



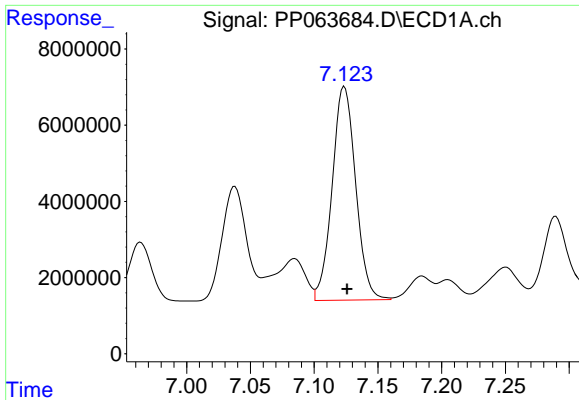
#27 AR-1254-2

R.T.: 6.755 min
 Delta R.T.: -0.002 min
 Response: 70894510
 Conc: 517.13 ng/ml



#27 AR-1254-2

R.T.: 5.685 min
 Delta R.T.: -0.002 min
 Response: 59267512
 Conc: 516.36 ng/ml



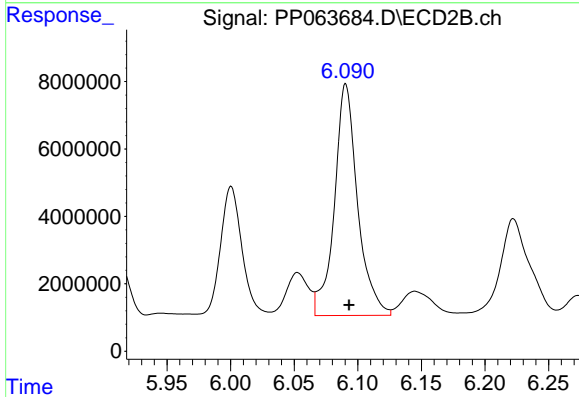
#28 AR-1254-3

R.T.: 7.124 min
 Delta R.T.: -0.002 min
 Response: 72037267
 Conc: 514.75 ng/ml

Instrument :
 ECD_P
 ClientSampleId :
 AR1254CCC500

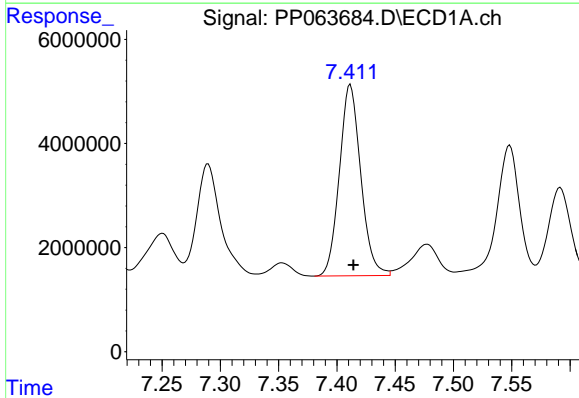
Manual Integrations
 APPROVED

Reviewed By :Yogesh Patel 03/22/2024
 Supervised By :Ankita Jodhani 03/22/2024



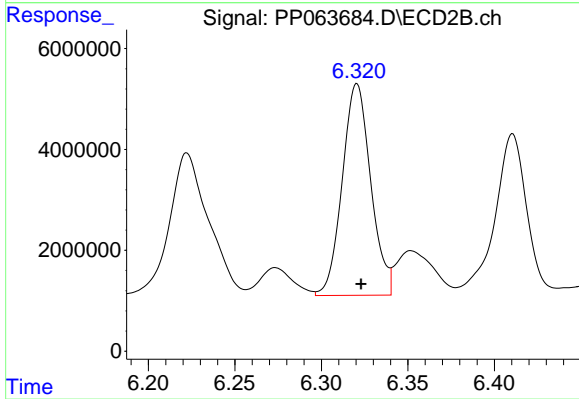
#28 AR-1254-3

R.T.: 6.091 min
 Delta R.T.: -0.003 min
 Response: 87284498
 Conc: 485.08 ng/ml



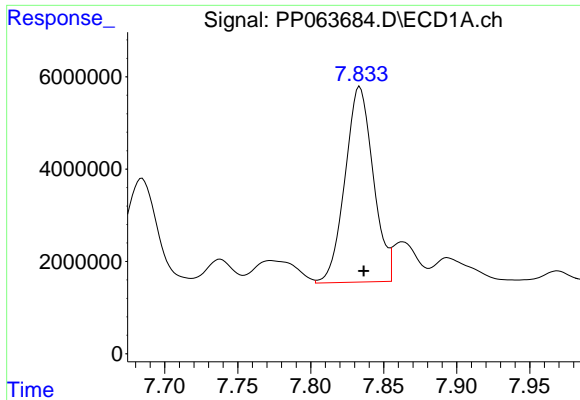
#29 AR-1254-4

R.T.: 7.412 min
 Delta R.T.: -0.003 min
 Response: 46933014
 Conc: 515.14 ng/ml



#29 AR-1254-4

R.T.: 6.321 min
 Delta R.T.: -0.002 min
 Response: 47934946
 Conc: 520.19 ng/ml



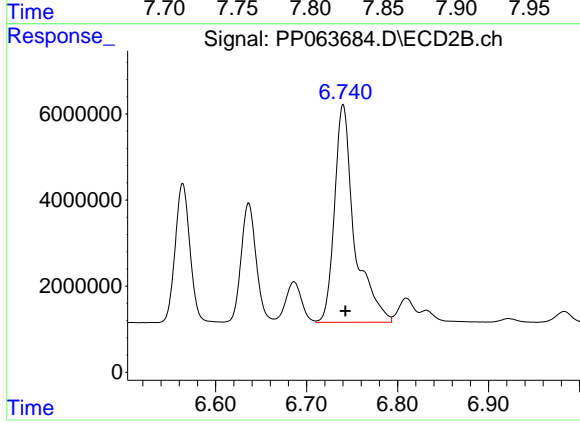
#30 AR-1254-5

R.T.: 7.833 min
 Delta R.T.: -0.003 min
 Response: 57298435
 Conc: 487.33 ng/ml

Instrument :
 ECD_P
 ClientSampleId :
 AR1254CCC500

Manual Integrations
 APPROVED

Reviewed By :Yogesh Patel 03/22/2024
 Supervised By :Ankita Jodhani 03/22/2024



#30 AR-1254-5

R.T.: 6.740 min
 Delta R.T.: -0.003 min
 Response: 76982424
 Conc: 461.19 ng/ml