

Data Path : Z:\pestpcbsrv\HPCHEM1\ECD_P\Data\PP032321\
 Data File : PP034271.D
 Signal(s) : Signal #1: ECD1A.CH Signal #2: ECD2B.CH
 Acq On : 23 Mar 2021 12:06
 Operator : DD\AJ
 Sample : M1661-06DL 2X
 Misc :
 ALS Vial : 13 Sample Multiplier: 1

Instrument :
 ECD_P
 ClientSampleId :
 X127-8CDL

Integration File signal 1: autoint1.e
 Integration File signal 2: autoint2.e
 Quant Time: Mar 24 02:55:57 2021
 Quant Method : Z:\pestpcbsrv\HPCHEM1\ECD_P\methods\PP031821.M
 Quant Title : GC EXTRACTABLES
 QLast Update : Sat Mar 20 01:42:16 2021
 Response via : Initial Calibration
 Integrator: ChemStation 6890 Scale Mode: Small noise peaks clipped

Volume Inj. : 2 µl
 Signal #1 Phase : ZB-MR1 Signal #2 Phase: ZB-MR2
 Signal #1 Info : 30Mx0.32mmx 0.50µ Signal #2 Info : 30M x 0.32mm x 0.25µm

Compound	RT#1	RT#2	Resp#1	Resp#2	ng/ml	ng/ml

System Monitoring Compounds						
1) SA Tetrachlo...	4.848	4.260	800825	483702	9.533	10.930
2) SA Decachlor...	10.770	9.573	834789	344753	10.637	13.064
Target Compounds						
26) L6 AR-1254-1	7.066	6.385	481846	256928	176.051	153.217
27) L6 AR-1254-2	7.294	6.541	1249982	474818	300.185	327.420
28) L6 AR-1254-3	7.674	6.962	1848709	957340	425.655	418.030
29) L6 AR-1254-4	7.970	7.198	1244533	505853	428.685	423.041
30) L6 AR-1254-5	8.397	7.625	3100049	3352585	928.645	1815.686 #

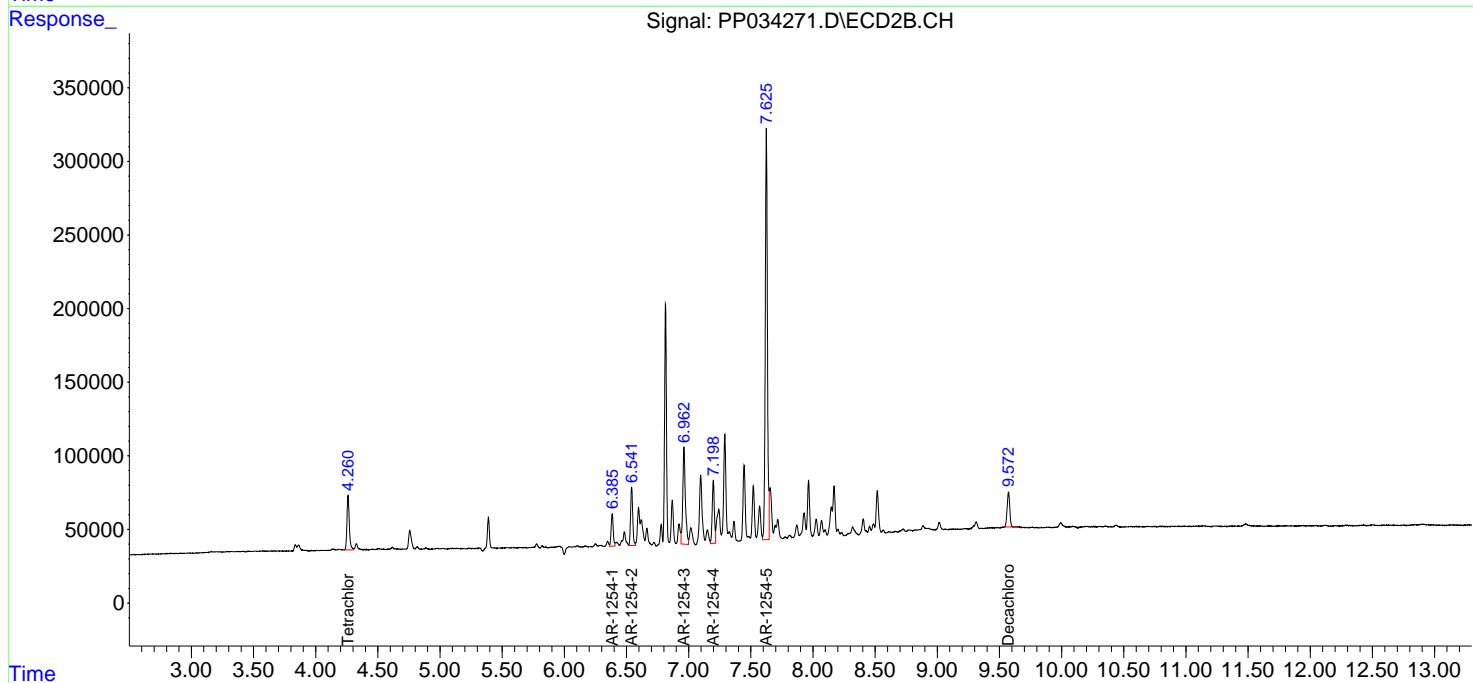
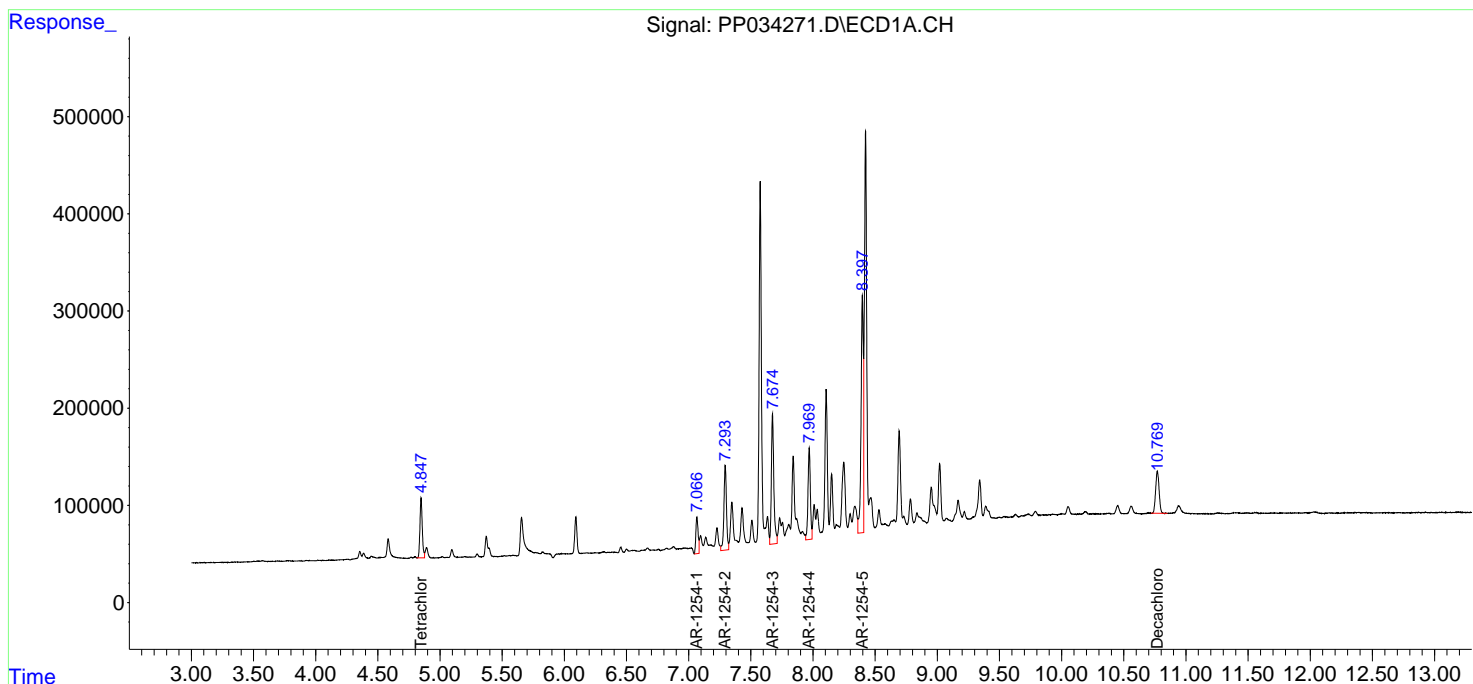
(f)=RT Delta > 1/2 Window (#)=Amounts differ by > 25% (m)=manual int.

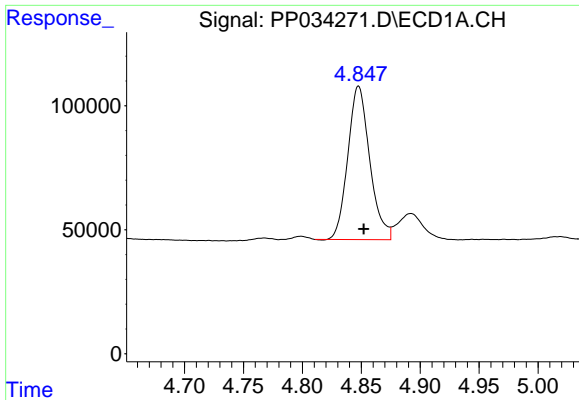
Data Path : Z:\pestpcbsrv\HPCHEM1\ECD_P\Data\PP032321\
 Data File : PP034271.D
 Signal(s) : Signal #1: ECD1A.CH Signal #2: ECD2B.CH
 Acq On : 23 Mar 2021 12:06
 Operator : DD\AJ
 Sample : M1661-06DL 2X
 Misc :
 ALS Vial : 13 Sample Multiplier: 1

Instrument :
 ECD_P
 ClientSampled :
 X127-8CDL

Integration File signal 1: autoint1.e
 Integration File signal 2: autoint2.e
 Quant Time: Mar 24 02:55:57 2021
 Quant Method : Z:\pestpcbsrv\HPCHEM1\ECD_P\methods\PP031821.M
 Quant Title : GC EXTRACTABLES
 QLast Update : Sat Mar 20 01:42:16 2021
 Response via : Initial Calibration
 Integrator: ChemStation 6890 Scale Mode: Small noise peaks clipped

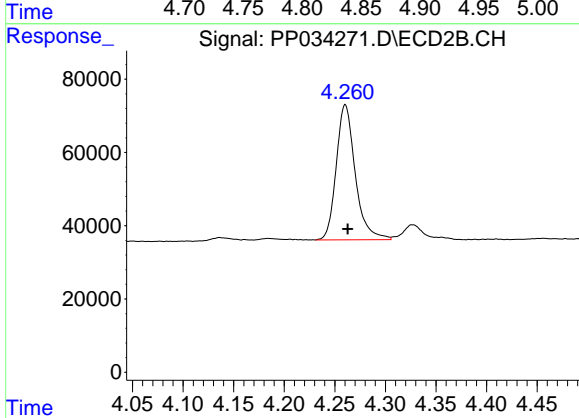
Volume Inj. : 2 µl
 Signal #1 Phase : ZB-MR1 Signal #2 Phase: ZB-MR2
 Signal #1 Info : 30Mx0.32mmx 0.50µ Signal #2 Info : 30M x 0.32mm x 0.25µm



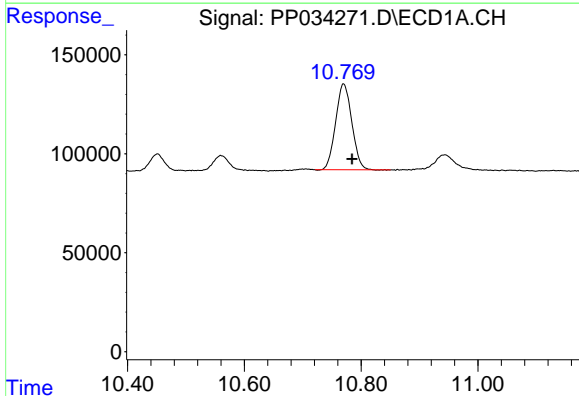


#1 Tetrachloro-m-xylene
 R.T.: 4.848 min
 Delta R.T.: -0.004 min
 Response: 800825
 Conc: 9.53 ng/ml

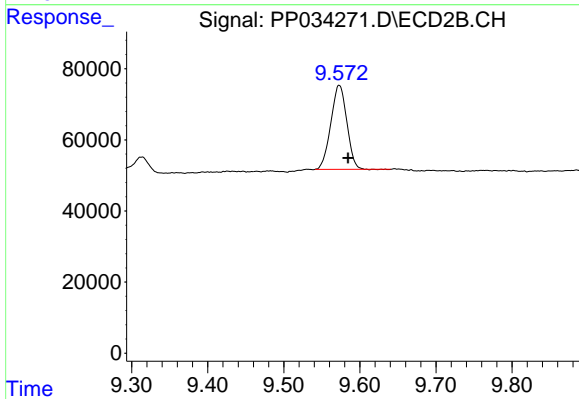
Instrument :
 ECD_P
 ClientSampleId :
 X127-8CDL



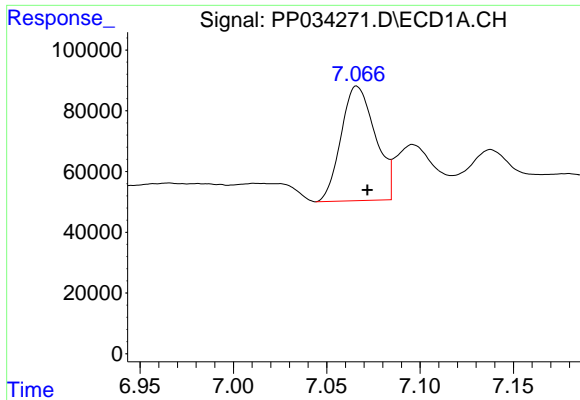
#1 Tetrachloro-m-xylene
 R.T.: 4.260 min
 Delta R.T.: -0.002 min
 Response: 483702
 Conc: 10.93 ng/ml



#2 Decachlorobiphenyl
 R.T.: 10.770 min
 Delta R.T.: -0.014 min
 Response: 834789
 Conc: 10.64 ng/ml

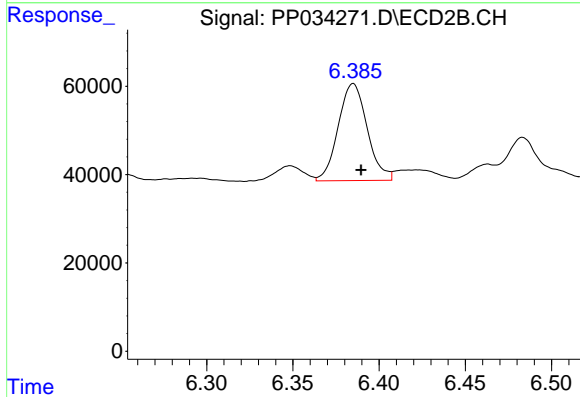


#2 Decachlorobiphenyl
 R.T.: 9.573 min
 Delta R.T.: -0.012 min
 Response: 344753
 Conc: 13.06 ng/ml

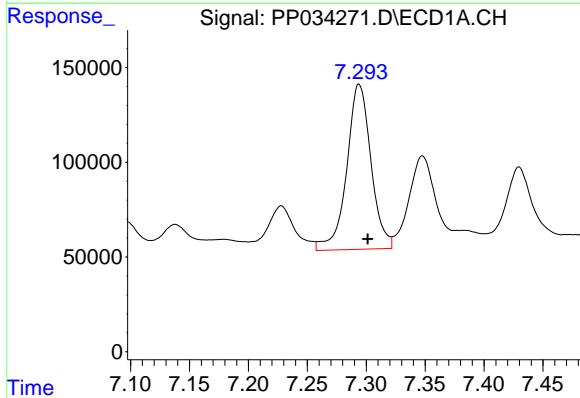


#26 AR-1254-1
 R.T.: 7.066 min
 Delta R.T.: -0.006 min
 Response: 481846
 Conc: 176.05 ng/ml

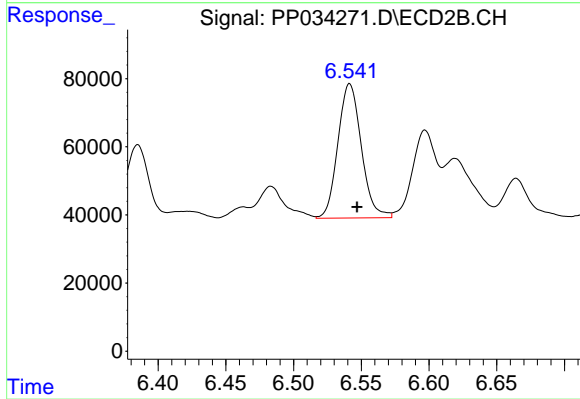
Instrument :
 ECD_P
 ClientSampleId :
 X127-8CDL



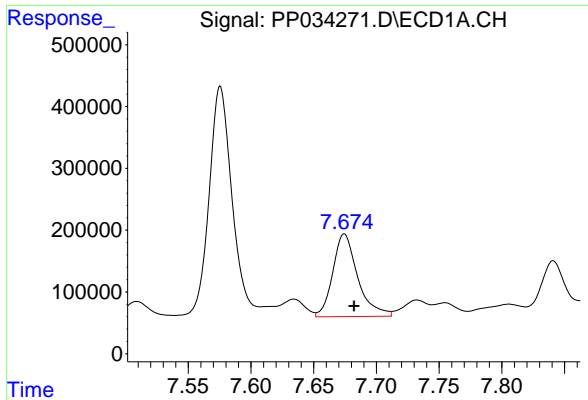
#26 AR-1254-1
 R.T.: 6.385 min
 Delta R.T.: -0.005 min
 Response: 256928
 Conc: 153.22 ng/ml



#27 AR-1254-2
 R.T.: 7.294 min
 Delta R.T.: -0.007 min
 Response: 1249982
 Conc: 300.18 ng/ml



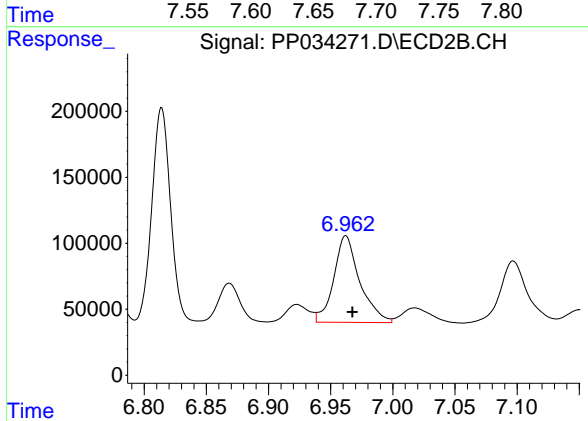
#27 AR-1254-2
 R.T.: 6.541 min
 Delta R.T.: -0.006 min
 Response: 474818
 Conc: 327.42 ng/ml



#28 AR-1254-3

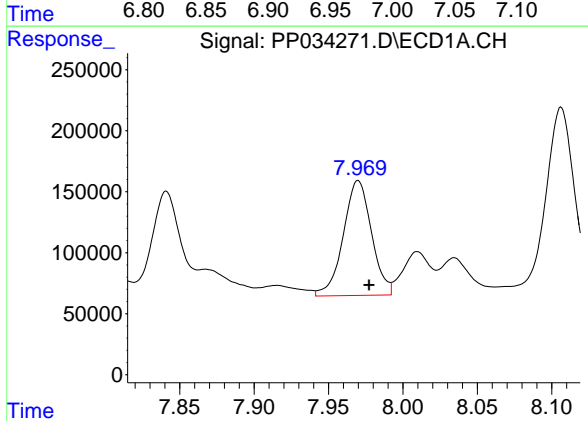
R.T.: 7.674 min
 Delta R.T.: -0.008 min
 Response: 1848709
 Conc: 425.65 ng/ml

Instrument :
 ECD_P
 ClientSampled :
 X127-8CDL



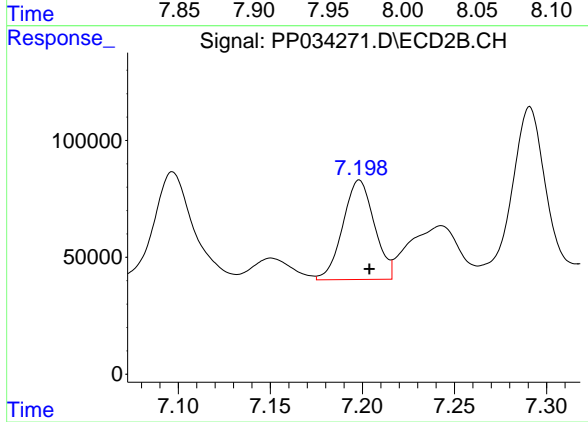
#28 AR-1254-3

R.T.: 6.962 min
 Delta R.T.: -0.005 min
 Response: 957340
 Conc: 418.03 ng/ml



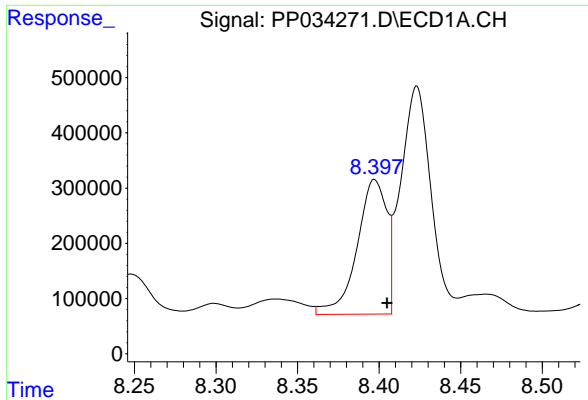
#29 AR-1254-4

R.T.: 7.970 min
 Delta R.T.: -0.007 min
 Response: 1244533
 Conc: 428.68 ng/ml



#29 AR-1254-4

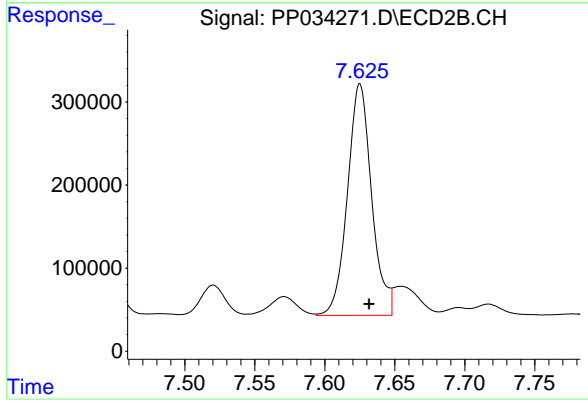
R.T.: 7.198 min
 Delta R.T.: -0.005 min
 Response: 505853
 Conc: 423.04 ng/ml



#30 AR-1254-5

R.T.: 8.397 min
 Delta R.T.: -0.008 min
 Response: 3100049
 Conc: 928.65 ng/ml

Instrument :
 ECD_P
 ClientSampleId :
 X127-8CDL



#30 AR-1254-5

R.T.: 7.625 min
 Delta R.T.: -0.006 min
 Response: 3352585
 Conc: 1815.69 ng/ml