

Data Path : Z:\pestpcbsrv\HPCHEM1\ECD_P\Data\PP032324\
 Data File : PP063727.D
 Signal(s) : Signal #1: ECD1A.ch Signal #2: ECD2B.ch
 Acq On : 22 Mar 2024 19:18
 Operator : YP\AJ
 Sample : AR1242CCC500
 Misc :
 ALS Vial : 4 Sample Multiplier: 1

Instrument :
 ECD_P
ClientSampleId :
 AR1242CCC500

Integration File signal 1: autoint1.e
 Integration File signal 2: autoint2.e
 Quant Time: Mar 22 22:49:48 2024
 Quant Method : Z:\pestpcbsrv\HPCHEM1\ECD_P\methods\PP031924.M
 Quant Title : GC EXTRACTABLES
 QLast Update : Tue Mar 19 06:23:02 2024
 Response via : Initial Calibration
 Integrator: ChemStation

Volume Inj. : 2 µl
 Signal #1 Phase : ZB-MR1 Signal #2 Phase: ZB-MR2
 Signal #1 Info : 30Mx0.32mmx 0.50µ Signal #2 Info : 30M x 0.32mm x 0.25µm

Compound	RT#1	RT#2	Resp#1	Resp#2	ng/ml	ng/ml

System Monitoring Compounds						
1) SA Tetrachlo...	4.487	3.638	115.2E6	121.7E6	48.272	50.968
2) SA Decachlor...	10.353	8.673	119.4E6	112.1E6	47.007	41.475
Target Compounds						
3) L1 AR-1016-1	5.669	4.729	30880322	30786513	370.573	372.693
4) L1 AR-1016-2	5.692	4.748	44321293	43018757	366.420	371.084
5) L1 AR-1016-3	5.755	4.925	28881575	23774605	361.645	381.983
6) L1 AR-1016-4	5.854	4.967	23457075	20302000	374.753	370.454
7) L1 AR-1016-5	6.151	5.182	25124634	28704832	389.925	412.942
8) L2 AR-1221-1	4.693	3.853	3241890	2764440	119.092	111.181
9) L2 AR-1221-2	4.787	3.939	5313642	5168510	252.644	252.196
10) L2 AR-1221-3	4.862	4.016	17480929	17890576	289.384	287.881
11) L3 AR-1232-1	4.862	4.016	17480929	17890576	323.038	324.557
12) L3 AR-1232-2	5.398	4.748	24466394	43018757	783.479	836.670
13) L3 AR-1232-3	5.692	4.925	44321293	23774605	819.517	857.191
14) L3 AR-1232-4	5.854	5.010	23457075	25633623	843.364	934.399
15) L3 AR-1232-5	5.946	5.182	22718812	28704832	972.872	972.817
16) L4 AR-1242-1	5.669	4.729	30880322	30786513	511.965	522.249
17) L4 AR-1242-2	5.692	4.748	44321293	43018757	516.132	525.667
18) L4 AR-1242-3	5.755	4.925	28881575	23774605	513.843	529.711
19) L4 AR-1242-4	5.854	5.010	23457075	25633623	521.327	516.455
20) L4 AR-1242-5	6.597	5.535	25126373	33093719	561.058	567.076
21) L5 AR-1248-1	5.669	4.729	30880322	30786513	660.991	691.180
22) L5 AR-1248-2	5.946	4.967	22718812	20302000	313.026	286.050
23) L5 AR-1248-3	6.151	5.010	25124634	25633623	311.163	346.399
24) L5 AR-1248-4	6.559	5.182	23355437	28704832	285.607	331.495
25) L5 AR-1248-5	6.597	5.576	25126373	25031093	308.085	333.402
26) L6 AR-1254-1	6.531	5.535	19230014	33093719	211.511	267.808 #
27) L6 AR-1254-2	6.756	5.684	24362246	12975201	177.708	113.044 #
28) L6 AR-1254-3	7.122	6.089	14082522	15224740	100.629	84.610
29) L6 AR-1254-4	7.410	6.318	8111488	8908673	89.032	96.676
30) L6 AR-1254-5	7.831	6.738	5054306	5832236	42.987	34.940
31) L7 AR-1260-1	7.288	6.232	2688844	8774368	21.289	61.399 #
32) L7 AR-1260-2	7.546	6.408	3605923	4877928	25.259	28.856
33) L7 AR-1260-3	0.000	6.561	0	3250660	N.D.	20.225 #
34) L7 AR-1260-4	8.123f	7.036	2387671	280119	19.847	2.298 #
35) L7 AR-1260-5	0.000	7.280	0	518457	N.D.	1.943 #
36) L8 AR-1262-1	0.000	6.807f	0	282016	N.D.	4.177 #
37) L8 AR-1262-2	0.000	7.036	0	280119	N.D.	1.753 #
39) L8 AR-1262-4	0.000	7.626	0	884552	N.D.	4.138 #
42) L9 AR-1268-2	0.000	7.626	0	884552	N.D.	2.574 #
45) L9 AR-1268-5	0.000	8.415	0	646800	N.D.	0.780 #

Data Path : Z:\pestpcbsrv\HPCHEM1\ECD_P\Data\PP032324\
Data File : PP063727.D
Signal(s) : Signal #1: ECD1A.ch Signal #2: ECD2B.ch
Acq On : 22 Mar 2024 19:18
Operator : YP\AJ
Sample : AR1242CCC500
Misc :
ALS Vial : 4 Sample Multiplier: 1

Instrument :
ECD_P
ClientSampleId :
AR1242CCC500

Integration File signal 1: autoint1.e
Integration File signal 2: autoint2.e
Quant Time: Mar 22 22:49:48 2024
Quant Method : Z:\pestpcbsrv\HPCHEM1\ECD_P\methods\PP031924.M
Quant Title : GC EXTRACTABLES
QLast Update : Tue Mar 19 06:23:02 2024
Response via : Initial Calibration
Integrator: ChemStation

Volume Inj. : 2 µl
Signal #1 Phase : ZB-MR1 Signal #2 Phase: ZB-MR2
Signal #1 Info : 30Mx0.32mmx 0.50µ Signal #2 Info : 30M x 0.32mm x 0.25µm

Compound	RT#1	RT#2	Resp#1	Resp#2	ng/ml	ng/ml
----------	------	------	--------	--------	-------	-------

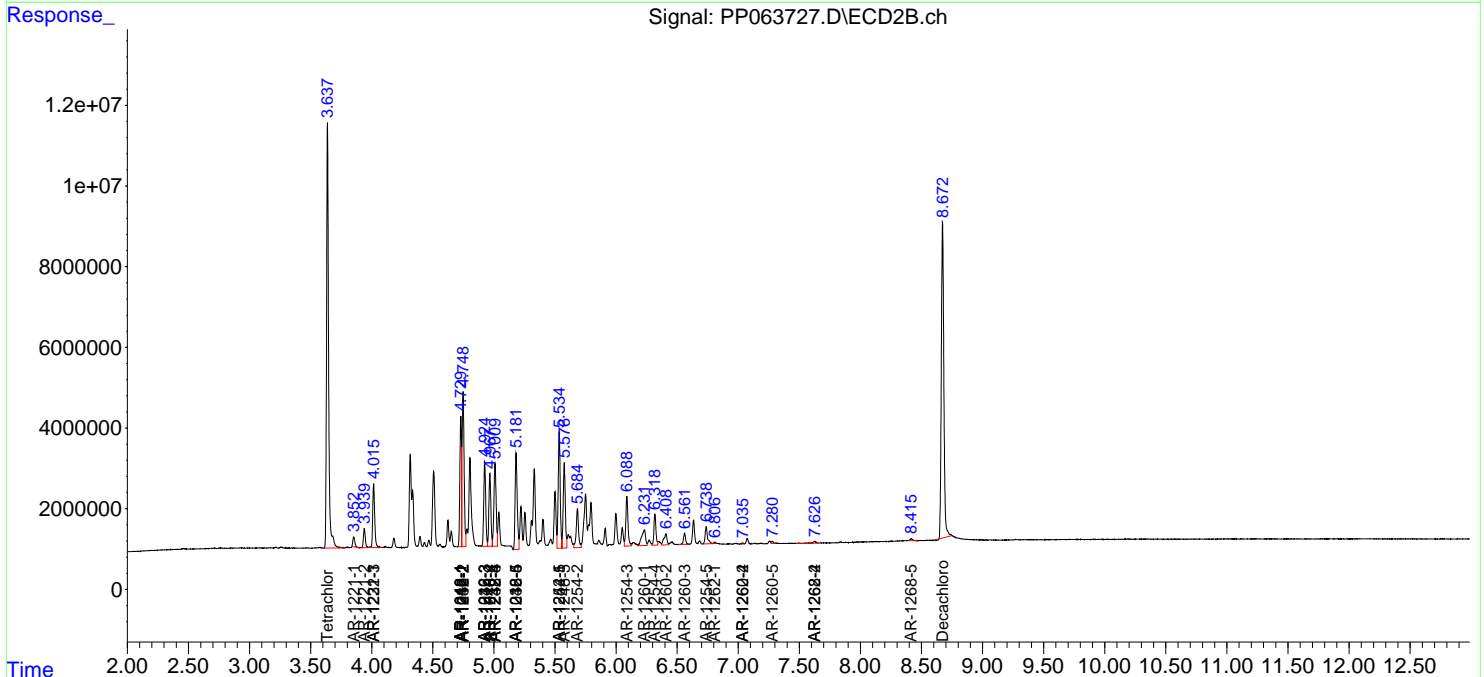
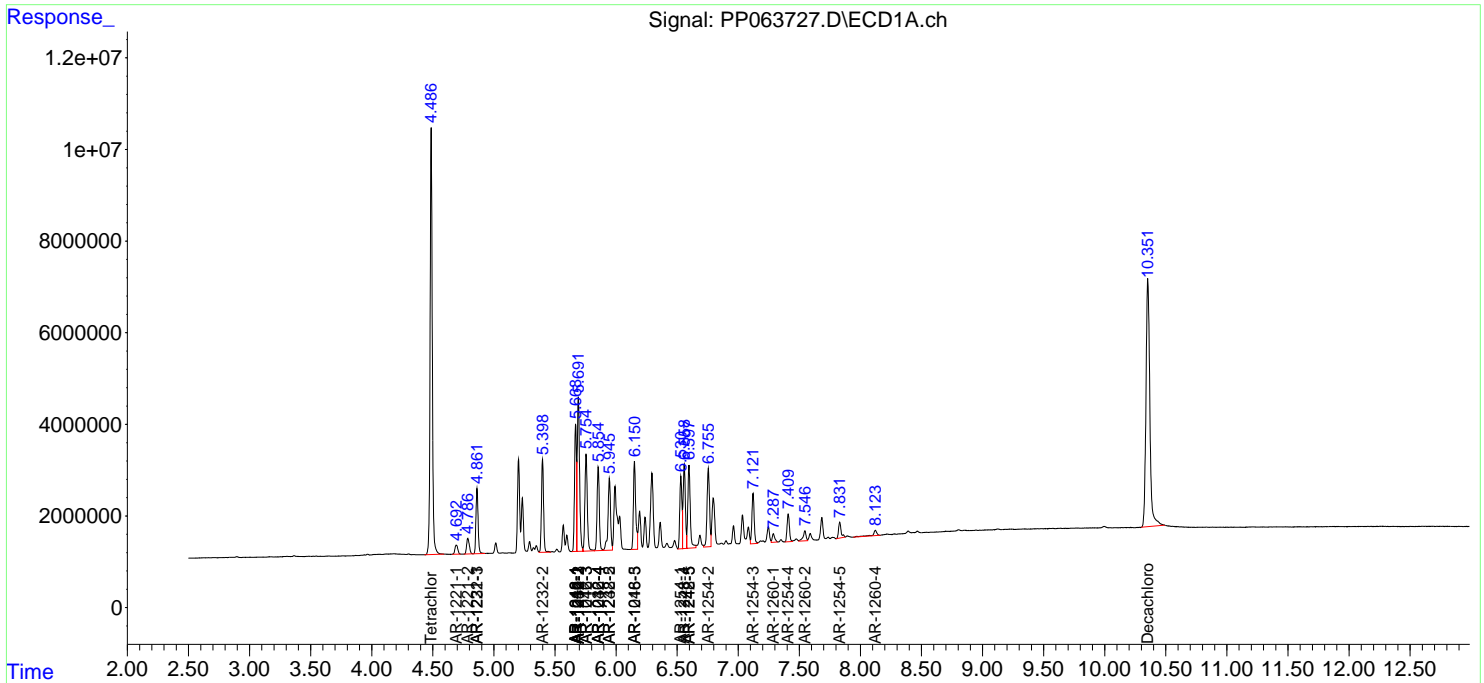
(f)=RT Delta > 1/2 Window (#)=Amounts differ by > 25% (m)=manual int.

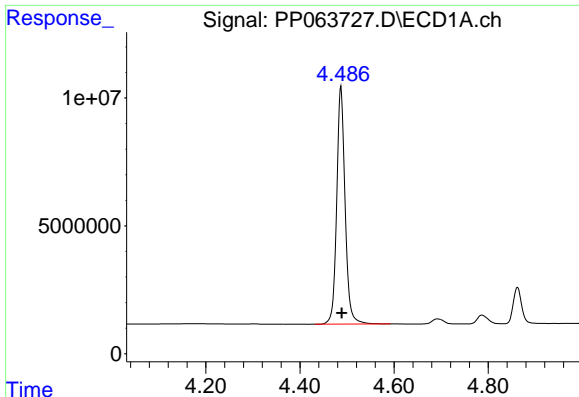
Data Path : Z:\pestpcbsrv\HPCHEM1\ECD_P\Data\PP032324\
 Data File : PP063727.D
 Signal(s) : Signal #1: ECD1A.ch Signal #2: ECD2B.ch
 Acq On : 22 Mar 2024 19:18
 Operator : YP\AJ
 Sample : AR1242CCC500
 Misc :
 ALS Vial : 4 Sample Multiplier: 1

Instrument :
 ECD_P
 ClientSampleId :
 AR1242CCC500

Integration File signal 1: autoint1.e
 Integration File signal 2: autoint2.e
 Quant Time: Mar 22 22:49:48 2024
 Quant Method : Z:\pestpcbsrv\HPCHEM1\ECD_P\methods\PP031924.M
 Quant Title : GC EXTRACTABLES
 QLast Update : Tue Mar 19 06:23:02 2024
 Response via : Initial Calibration
 Integrator: ChemStation

Volume Inj. : 2 µl
 Signal #1 Phase : ZB-MR1 Signal #2 Phase: ZB-MR2
 Signal #1 Info : 30Mx0.32mmx 0.50µ Signal #2 Info : 30M x 0.32mm x 0.25µm

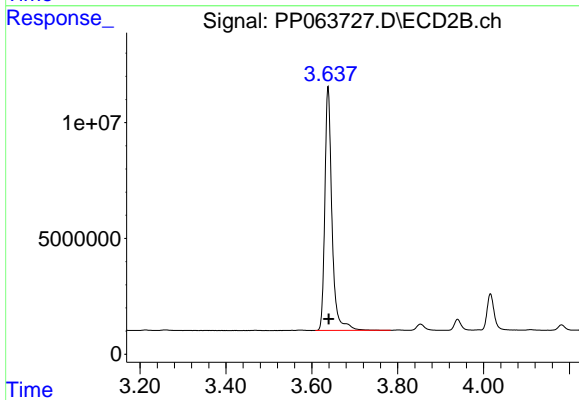




#1 Tetrachloro-m-xylene

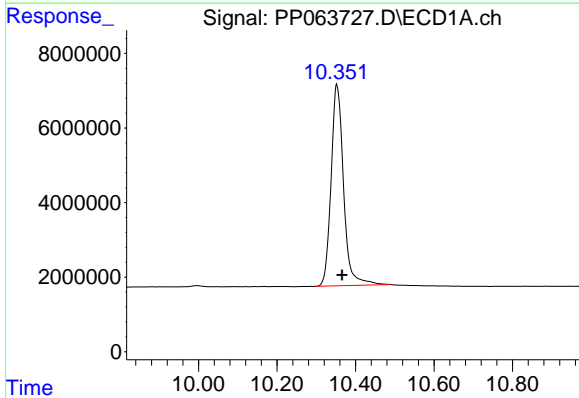
R.T.: 4.487 min
 Delta R.T.: -0.002 min
 Response: 115183633
 Conc: 48.27 ng/ml

Instrument :
 ECD_P
 ClientSampleId :
 AR1242CCC500



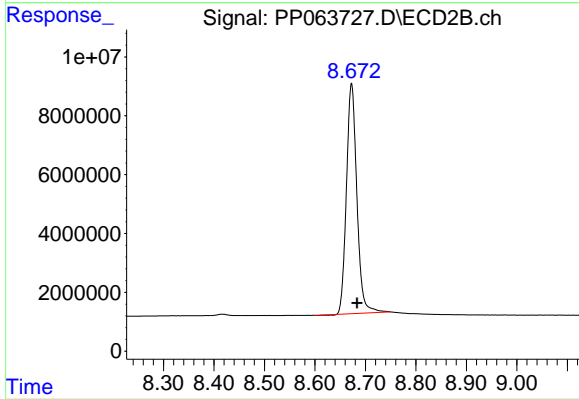
#1 Tetrachloro-m-xylene

R.T.: 3.638 min
 Delta R.T.: -0.001 min
 Response: 121688400
 Conc: 50.97 ng/ml



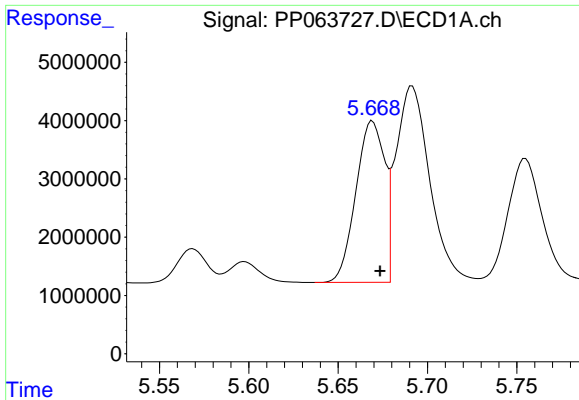
#2 Decachlorobiphenyl

R.T.: 10.353 min
 Delta R.T.: -0.013 min
 Response: 119350778
 Conc: 47.01 ng/ml



#2 Decachlorobiphenyl

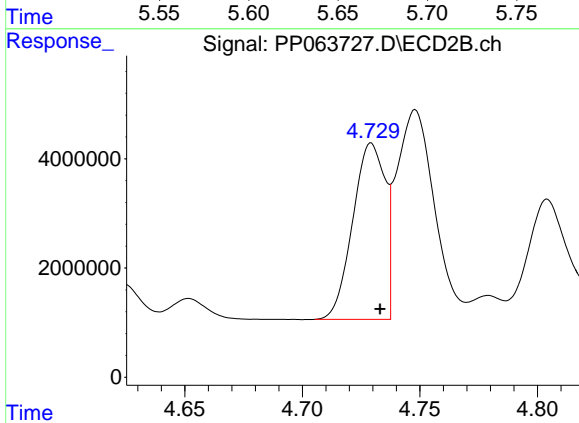
R.T.: 8.673 min
 Delta R.T.: -0.011 min
 Response: 112085719
 Conc: 41.47 ng/ml



#3 AR-1016-1

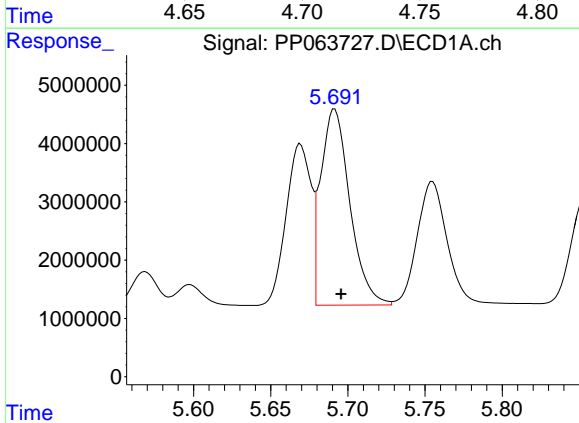
R.T.: 5.669 min
 Delta R.T.: -0.004 min
 Response: 30880322
 Conc: 370.57 ng/ml

Instrument :
 ECD_P
 ClientSampleId :
 AR1242CCC500



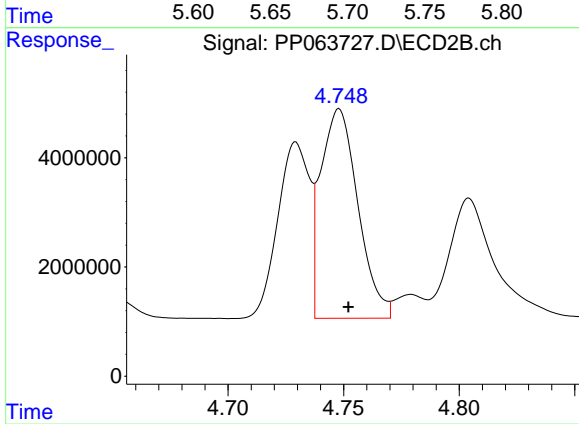
#3 AR-1016-1

R.T.: 4.729 min
 Delta R.T.: -0.004 min
 Response: 30786513
 Conc: 372.69 ng/ml



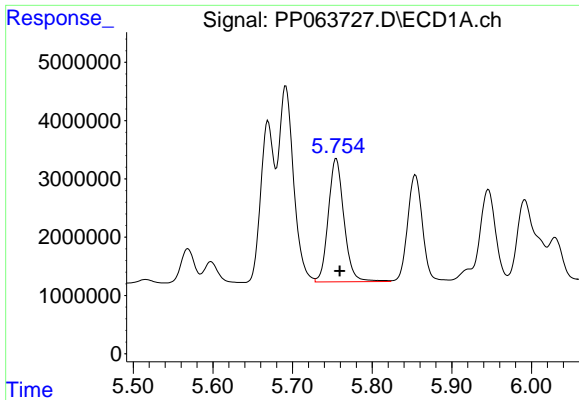
#4 AR-1016-2

R.T.: 5.692 min
 Delta R.T.: -0.004 min
 Response: 44321293
 Conc: 366.42 ng/ml



#4 AR-1016-2

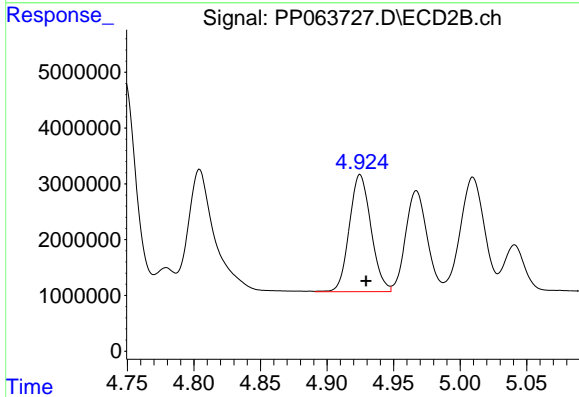
R.T.: 4.748 min
 Delta R.T.: -0.004 min
 Response: 43018757
 Conc: 371.08 ng/ml



#5 AR-1016-3

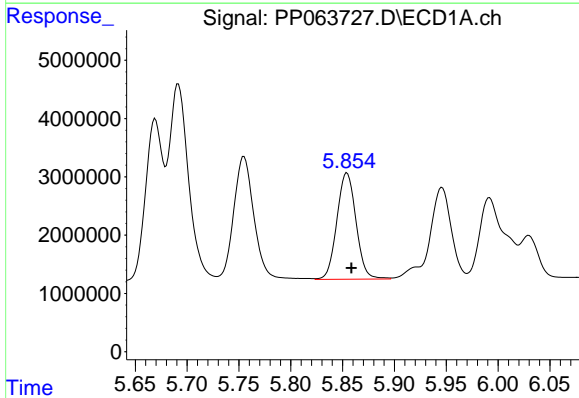
R.T.: 5.755 min
 Delta R.T.: -0.004 min
 Response: 28881575
 Conc: 361.64 ng/ml

Instrument :
 ECD_P
 ClientSampleId :
 AR1242CCC500



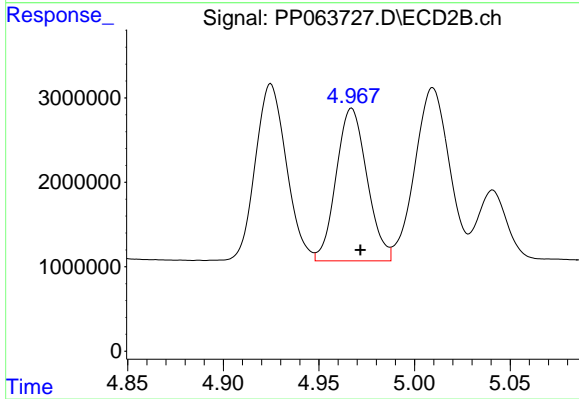
#5 AR-1016-3

R.T.: 4.925 min
 Delta R.T.: -0.004 min
 Response: 23774605
 Conc: 381.98 ng/ml



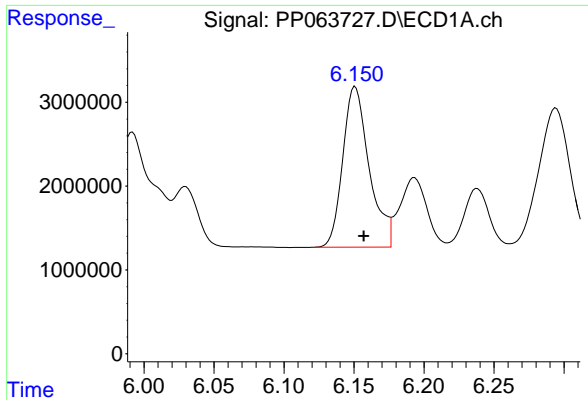
#6 AR-1016-4

R.T.: 5.854 min
 Delta R.T.: -0.004 min
 Response: 23457075
 Conc: 374.75 ng/ml



#6 AR-1016-4

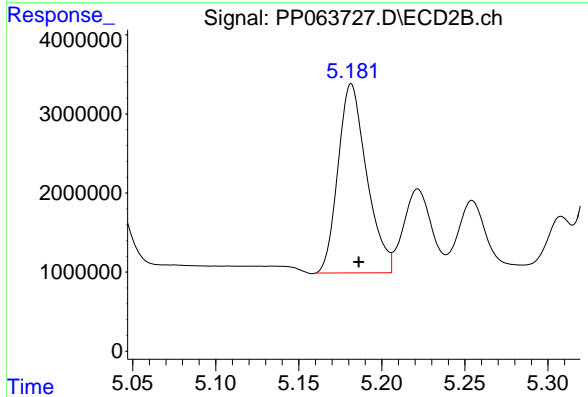
R.T.: 4.967 min
 Delta R.T.: -0.005 min
 Response: 20302000
 Conc: 370.45 ng/ml



#7 AR-1016-5

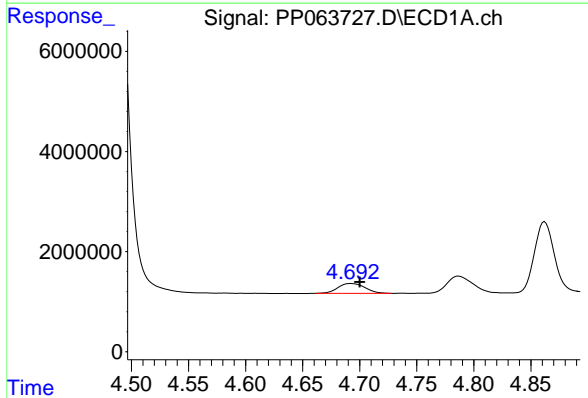
R.T.: 6.151 min
 Delta R.T.: -0.006 min
 Response: 25124634
 Conc: 389.92 ng/ml

Instrument :
 ECD_P
 ClientSampleId :
 AR1242CCC500



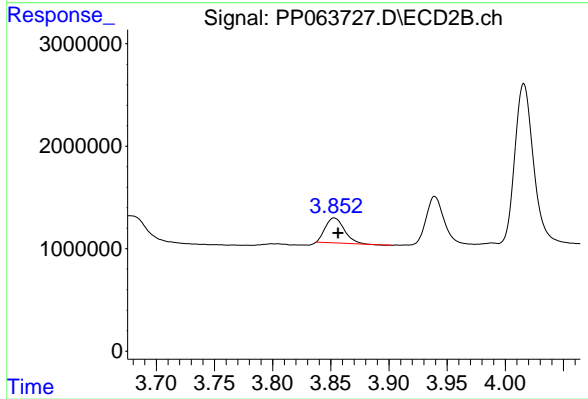
#7 AR-1016-5

R.T.: 5.182 min
 Delta R.T.: -0.004 min
 Response: 28704832
 Conc: 412.94 ng/ml



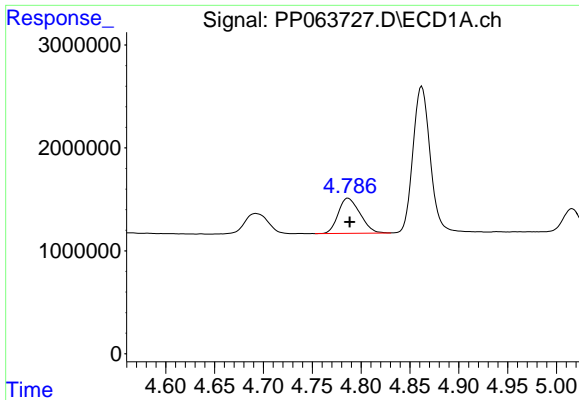
#8 AR-1221-1

R.T.: 4.693 min
 Delta R.T.: -0.008 min
 Response: 3241890
 Conc: 119.09 ng/ml



#8 AR-1221-1

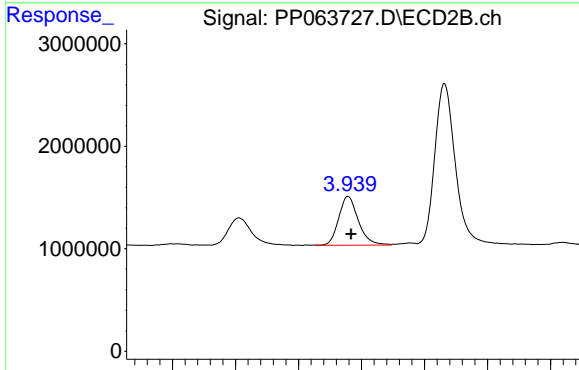
R.T.: 3.853 min
 Delta R.T.: -0.003 min
 Response: 2764440
 Conc: 111.18 ng/ml



#9 AR-1221-2

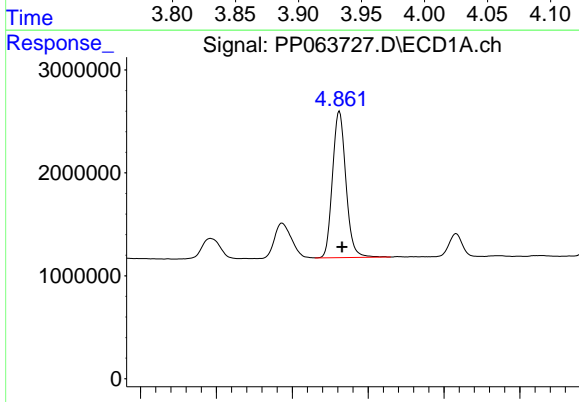
R.T.: 4.787 min
 Delta R.T.: -0.002 min
 Response: 5313642
 Conc: 252.64 ng/ml

Instrument :
 ECD_P
 ClientSampleId :
 AR1242CCC500



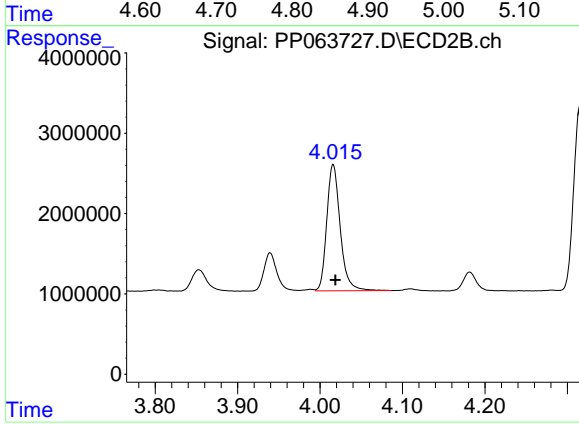
#9 AR-1221-2

R.T.: 3.939 min
 Delta R.T.: -0.002 min
 Response: 5168510
 Conc: 252.20 ng/ml



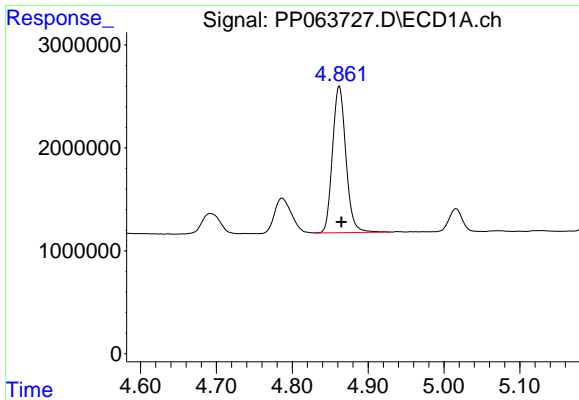
#10 AR-1221-3

R.T.: 4.862 min
 Delta R.T.: -0.003 min
 Response: 17480929
 Conc: 289.38 ng/ml



#10 AR-1221-3

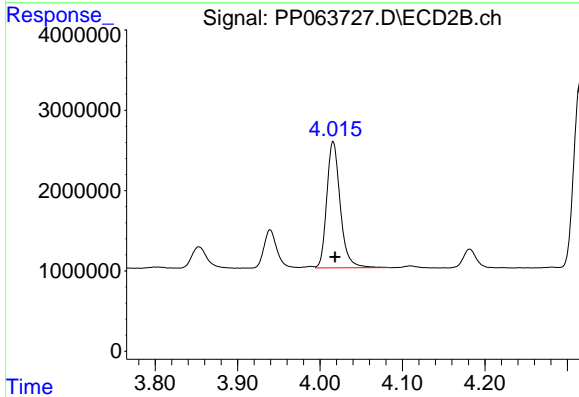
R.T.: 4.016 min
 Delta R.T.: -0.003 min
 Response: 17890576
 Conc: 287.88 ng/ml



#11 AR-1232-1

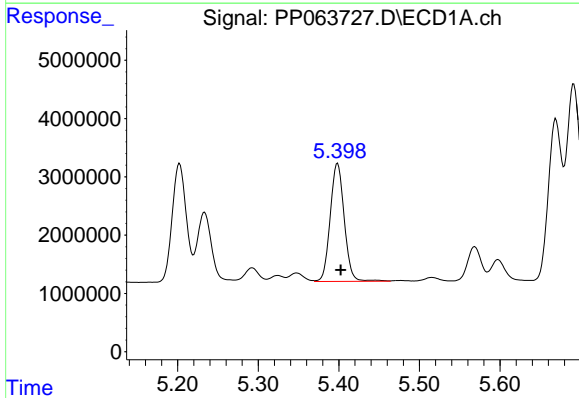
R.T.: 4.862 min
Delta R.T.: -0.003 min
Response: 17480929
Conc: 323.04 ng/ml

Instrument :
ECD_P
ClientSampleId :
AR1242CCC500



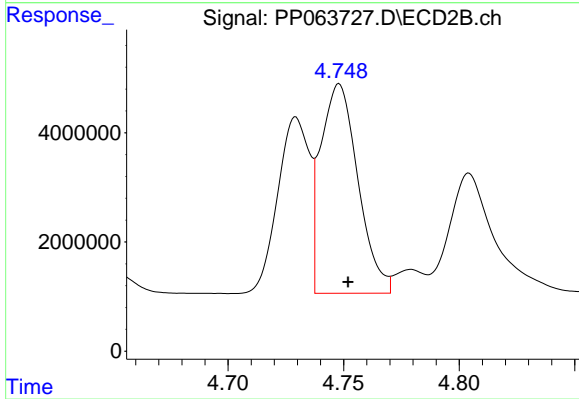
#11 AR-1232-1

R.T.: 4.016 min
Delta R.T.: -0.002 min
Response: 17890576
Conc: 324.56 ng/ml



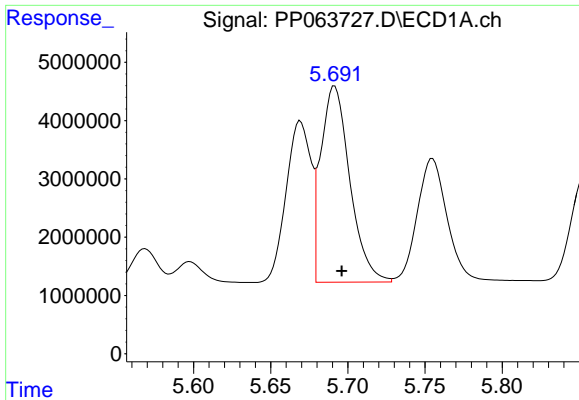
#12 AR-1232-2

R.T.: 5.398 min
Delta R.T.: -0.004 min
Response: 24466394
Conc: 783.48 ng/ml



#12 AR-1232-2

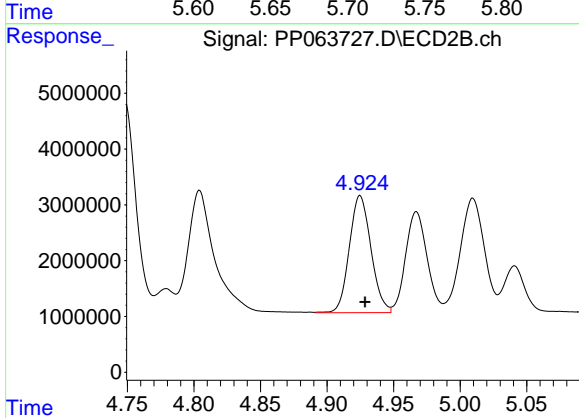
R.T.: 4.748 min
Delta R.T.: -0.004 min
Response: 43018757
Conc: 836.67 ng/ml



#13 AR-1232-3

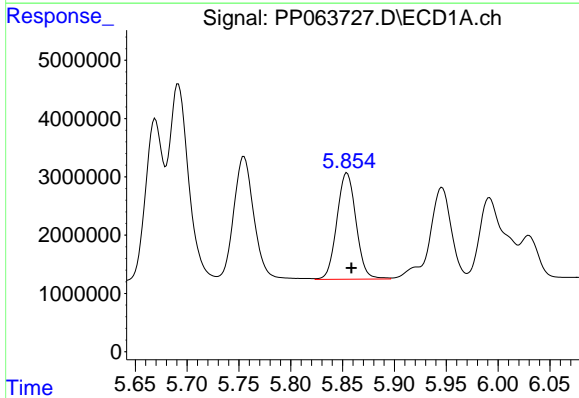
R.T.: 5.692 min
 Delta R.T.: -0.004 min
 Response: 44321293
 Conc: 819.52 ng/ml

Instrument :
 ECD_P
 ClientSampleId :
 AR1242CCC500



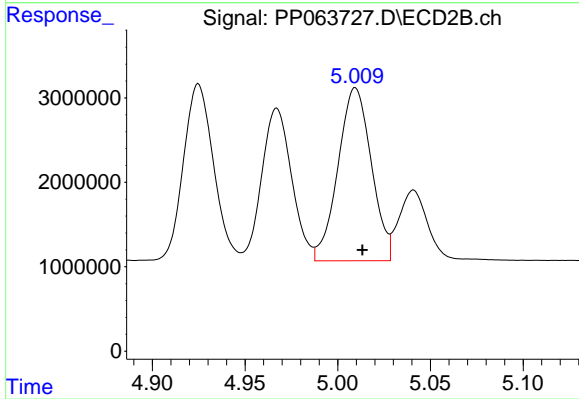
#13 AR-1232-3

R.T.: 4.925 min
 Delta R.T.: -0.004 min
 Response: 23774605
 Conc: 857.19 ng/ml



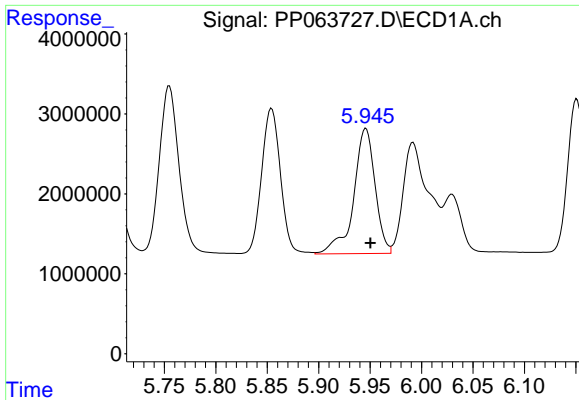
#14 AR-1232-4

R.T.: 5.854 min
 Delta R.T.: -0.004 min
 Response: 23457075
 Conc: 843.36 ng/ml



#14 AR-1232-4

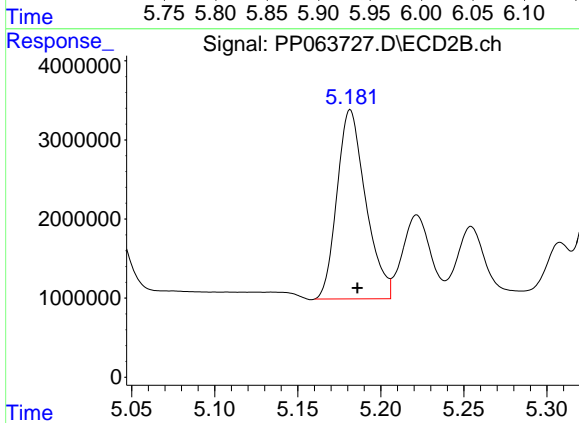
R.T.: 5.010 min
 Delta R.T.: -0.004 min
 Response: 25633623
 Conc: 934.40 ng/ml



#15 AR-1232-5

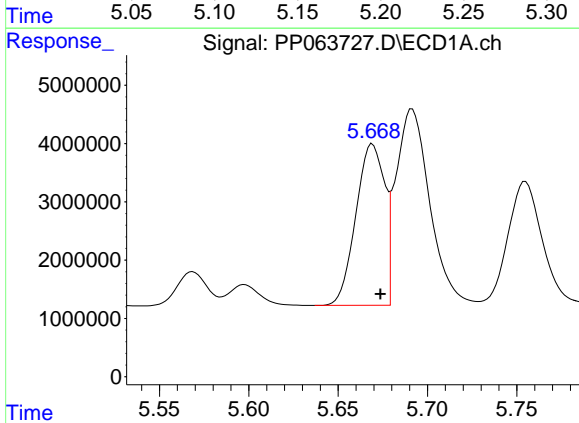
R.T.: 5.946 min
 Delta R.T.: -0.004 min
 Response: 22718812
 Conc: 972.87 ng/ml

Instrument :
 ECD_P
 ClientSampleId :
 AR1242CCC500



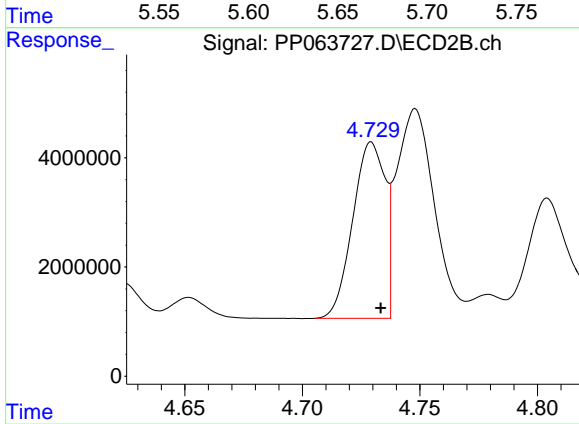
#15 AR-1232-5

R.T.: 5.182 min
 Delta R.T.: -0.004 min
 Response: 28704832
 Conc: 972.82 ng/ml



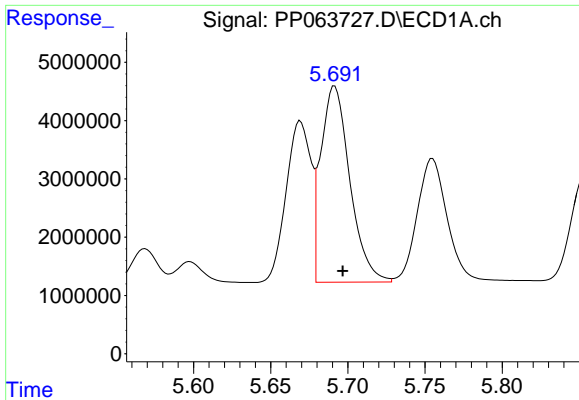
#16 AR-1242-1

R.T.: 5.669 min
 Delta R.T.: -0.004 min
 Response: 30880322
 Conc: 511.96 ng/ml



#16 AR-1242-1

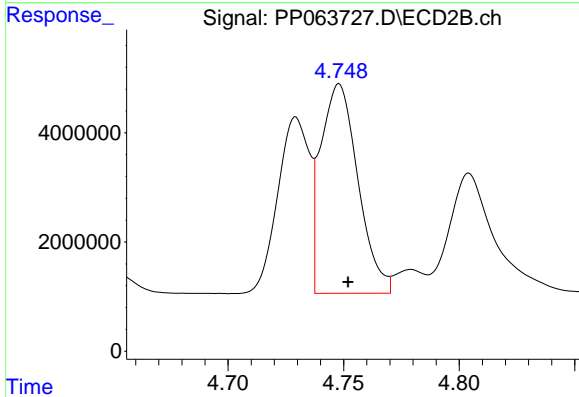
R.T.: 4.729 min
 Delta R.T.: -0.004 min
 Response: 30786513
 Conc: 522.25 ng/ml



#17 AR-1242-2

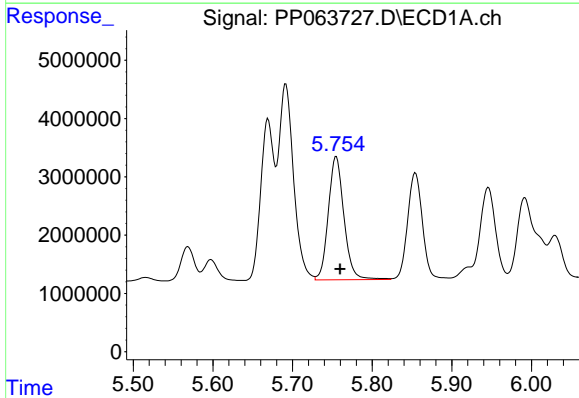
R.T.: 5.692 min
 Delta R.T.: -0.005 min
 Response: 44321293
 Conc: 516.13 ng/ml

Instrument :
 ECD_P
 ClientSampleId :
 AR1242CCC500



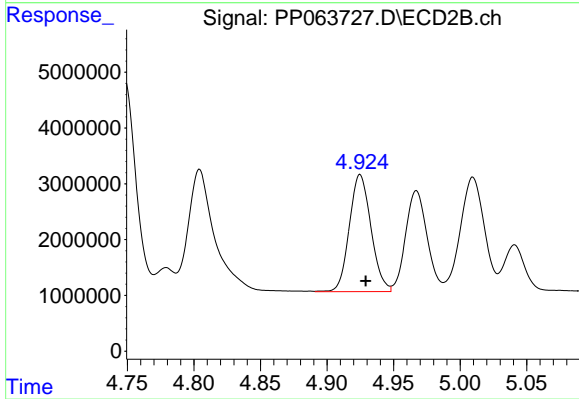
#17 AR-1242-2

R.T.: 4.748 min
 Delta R.T.: -0.004 min
 Response: 43018757
 Conc: 525.67 ng/ml



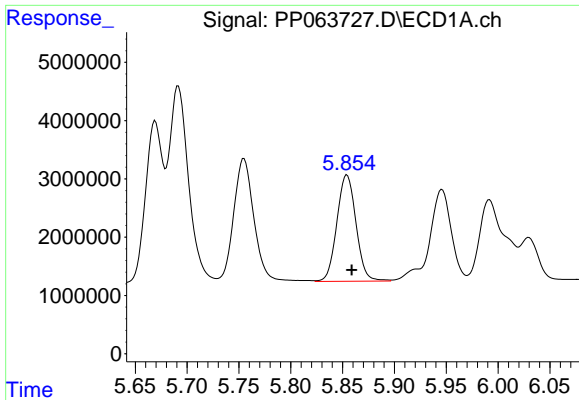
#18 AR-1242-3

R.T.: 5.755 min
 Delta R.T.: -0.005 min
 Response: 28881575
 Conc: 513.84 ng/ml



#18 AR-1242-3

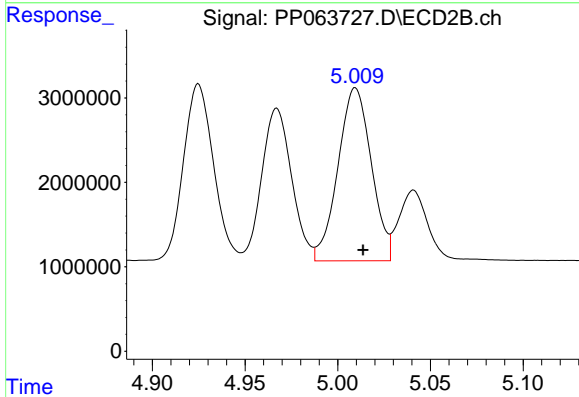
R.T.: 4.925 min
 Delta R.T.: -0.004 min
 Response: 23774605
 Conc: 529.71 ng/ml



#19 AR-1242-4

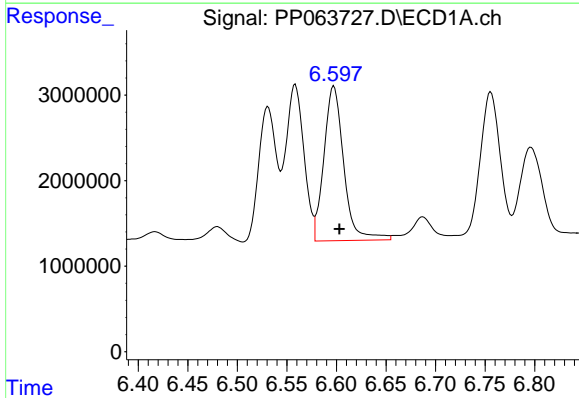
R.T.: 5.854 min
 Delta R.T.: -0.005 min
 Response: 23457075
 Conc: 521.33 ng/ml

Instrument :
 ECD_P
 ClientSampleId :
 AR1242CCC500



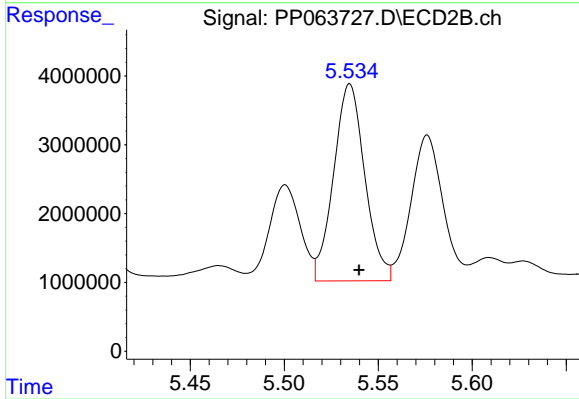
#19 AR-1242-4

R.T.: 5.010 min
 Delta R.T.: -0.004 min
 Response: 25633623
 Conc: 516.46 ng/ml



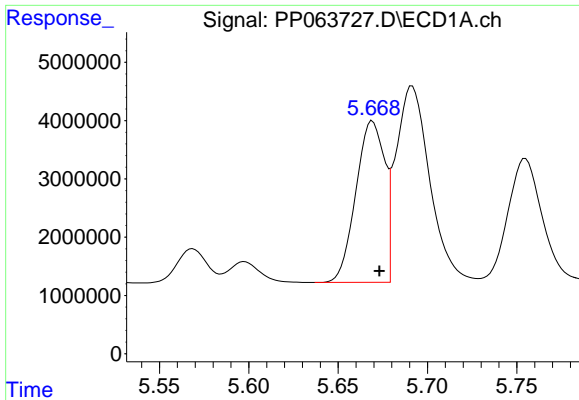
#20 AR-1242-5

R.T.: 6.597 min
 Delta R.T.: -0.006 min
 Response: 25126373
 Conc: 561.06 ng/ml



#20 AR-1242-5

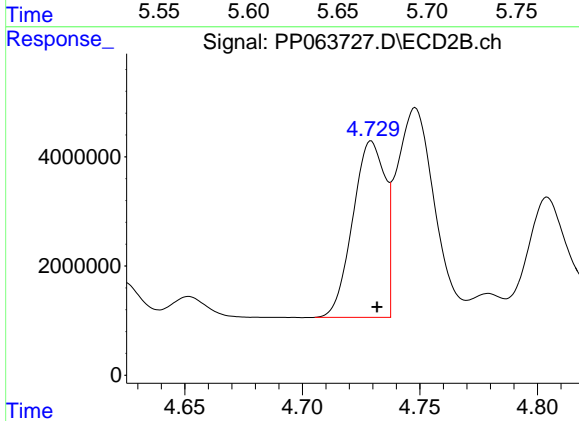
R.T.: 5.535 min
 Delta R.T.: -0.005 min
 Response: 33093719
 Conc: 567.08 ng/ml



#21 AR-1248-1

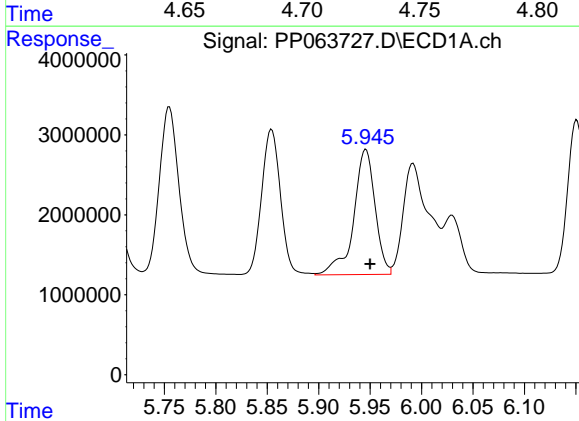
R.T.: 5.669 min
 Delta R.T.: -0.004 min
 Response: 30880322
 Conc: 660.99 ng/ml

Instrument :
 ECD_P
 ClientSampleId :
 AR1242CCC500



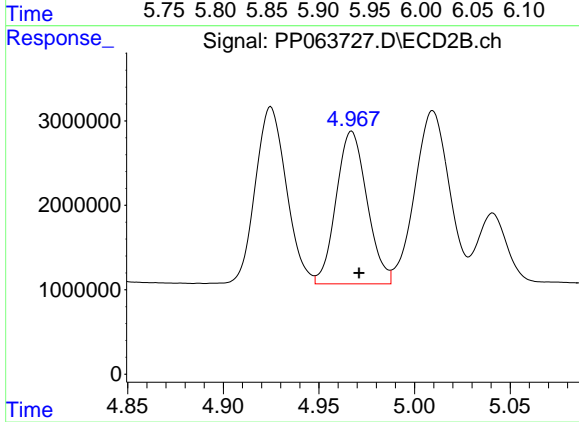
#21 AR-1248-1

R.T.: 4.729 min
 Delta R.T.: -0.002 min
 Response: 30786513
 Conc: 691.18 ng/ml



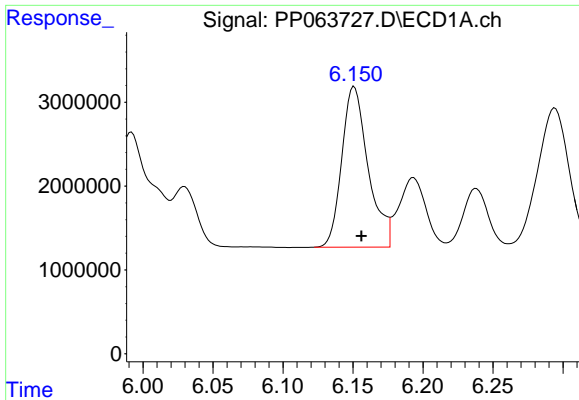
#22 AR-1248-2

R.T.: 5.946 min
 Delta R.T.: -0.004 min
 Response: 22718812
 Conc: 313.03 ng/ml



#22 AR-1248-2

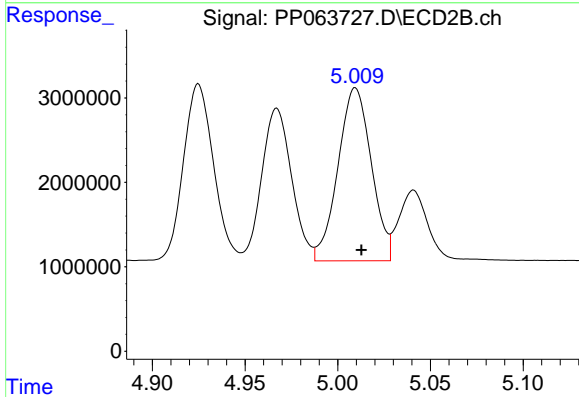
R.T.: 4.967 min
 Delta R.T.: -0.004 min
 Response: 20302000
 Conc: 286.05 ng/ml



#23 AR-1248-3

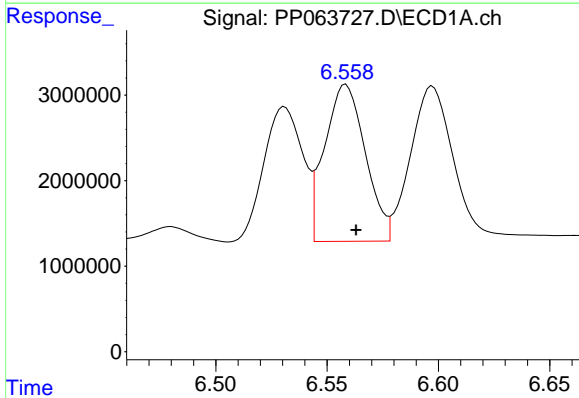
R.T.: 6.151 min
 Delta R.T.: -0.005 min
 Response: 25124634
 Conc: 311.16 ng/ml

Instrument :
 ECD_P
 ClientSampleId :
 AR1242CCC500



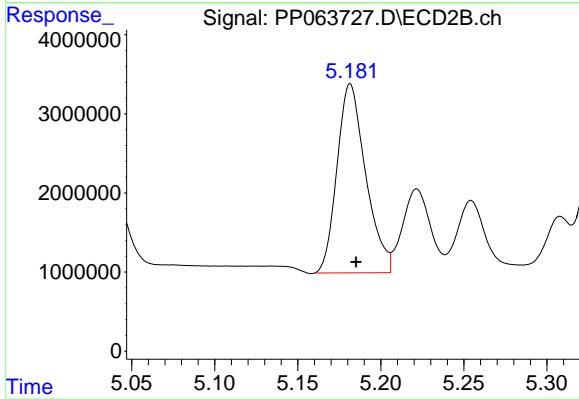
#23 AR-1248-3

R.T.: 5.010 min
 Delta R.T.: -0.003 min
 Response: 25633623
 Conc: 346.40 ng/ml



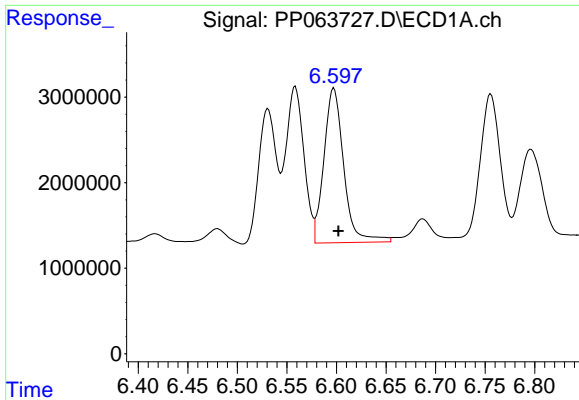
#24 AR-1248-4

R.T.: 6.559 min
 Delta R.T.: -0.005 min
 Response: 23355437
 Conc: 285.61 ng/ml



#24 AR-1248-4

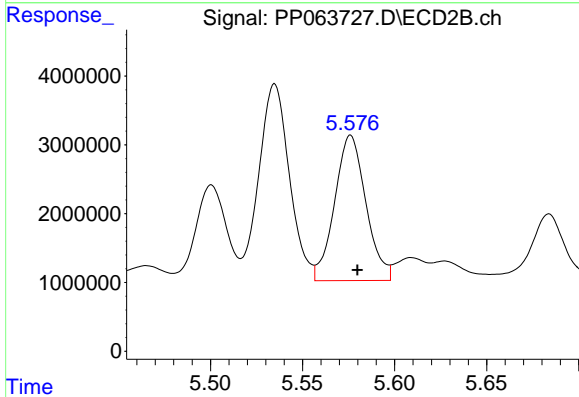
R.T.: 5.182 min
 Delta R.T.: -0.003 min
 Response: 28704832
 Conc: 331.49 ng/ml



#25 AR-1248-5

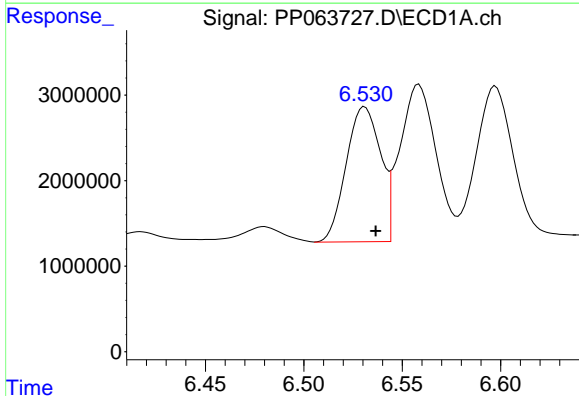
R.T.: 6.597 min
 Delta R.T.: -0.005 min
 Response: 25126373
 Conc: 308.09 ng/ml

Instrument :
 ECD_P
 ClientSampleId :
 AR1242CCC500



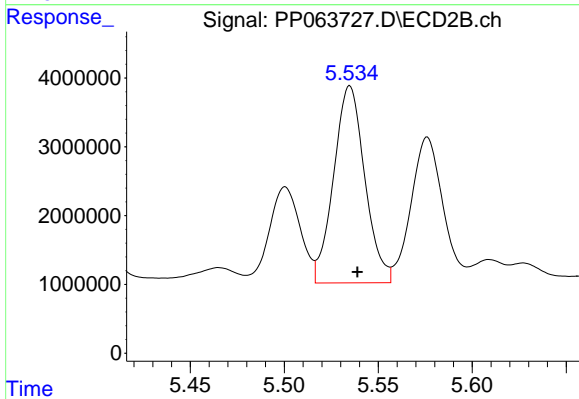
#25 AR-1248-5

R.T.: 5.576 min
 Delta R.T.: -0.004 min
 Response: 25031093
 Conc: 333.40 ng/ml



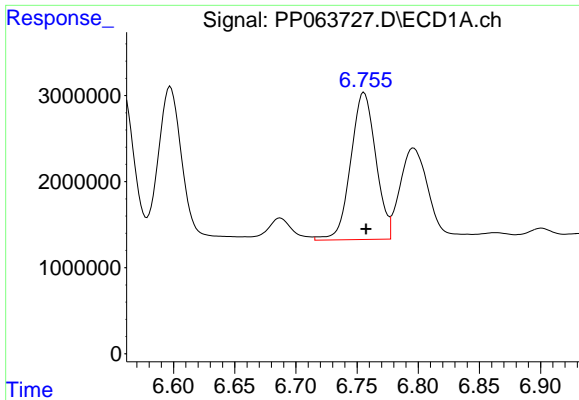
#26 AR-1254-1

R.T.: 6.531 min
 Delta R.T.: -0.005 min
 Response: 19230014
 Conc: 211.51 ng/ml



#26 AR-1254-1

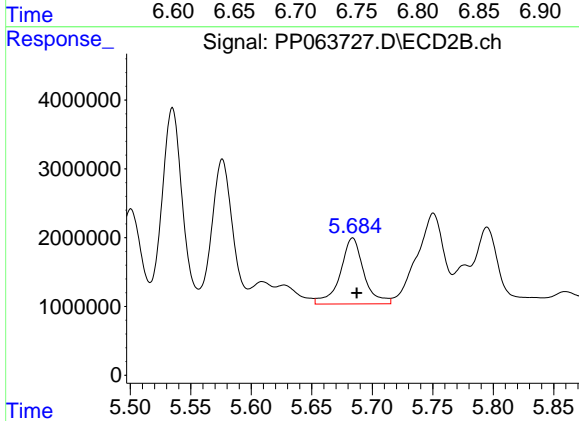
R.T.: 5.535 min
 Delta R.T.: -0.004 min
 Response: 33093719
 Conc: 267.81 ng/ml



#27 AR-1254-2

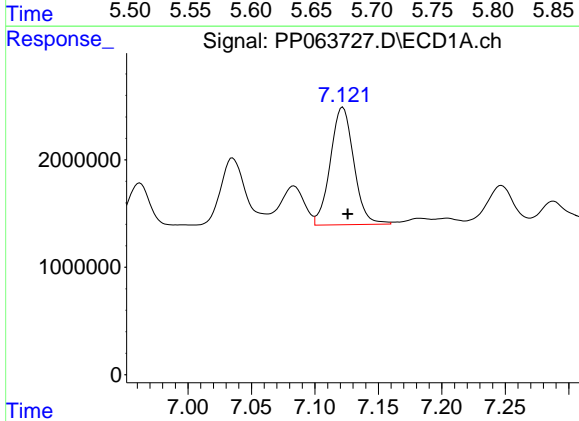
R.T.: 6.756 min
Delta R.T.: -0.002 min
Response: 24362246
Conc: 177.71 ng/ml

Instrument :
ECD_P
ClientSampleId :
AR1242CCC500



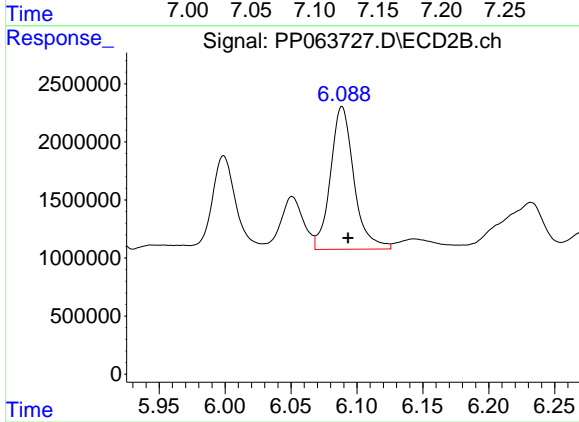
#27 AR-1254-2

R.T.: 5.684 min
Delta R.T.: -0.003 min
Response: 12975201
Conc: 113.04 ng/ml



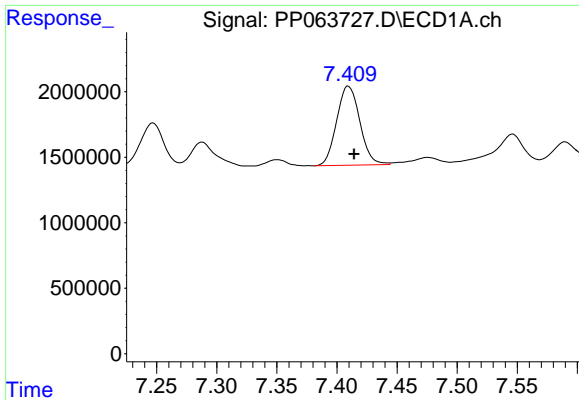
#28 AR-1254-3

R.T.: 7.122 min
Delta R.T.: -0.004 min
Response: 14082522
Conc: 100.63 ng/ml



#28 AR-1254-3

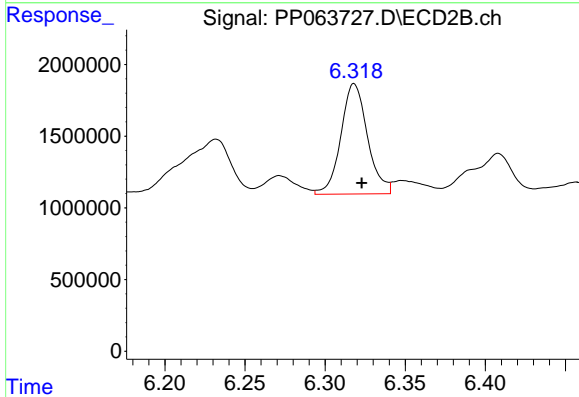
R.T.: 6.089 min
Delta R.T.: -0.004 min
Response: 15224740
Conc: 84.61 ng/ml



#29 AR-1254-4

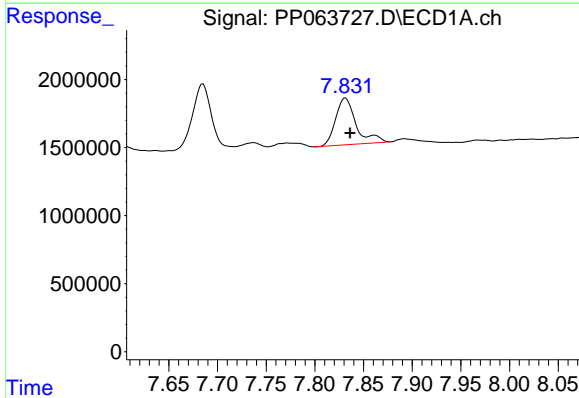
R.T.: 7.410 min
 Delta R.T.: -0.004 min
 Response: 8111488
 Conc: 89.03 ng/ml

Instrument :
 ECD_P
 ClientSampleId :
 AR1242CCC500



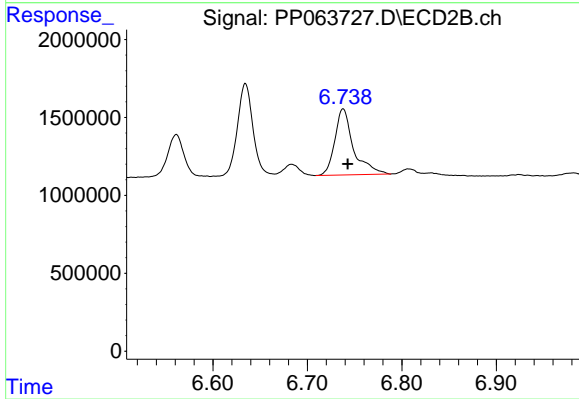
#29 AR-1254-4

R.T.: 6.318 min
 Delta R.T.: -0.005 min
 Response: 8908673
 Conc: 96.68 ng/ml



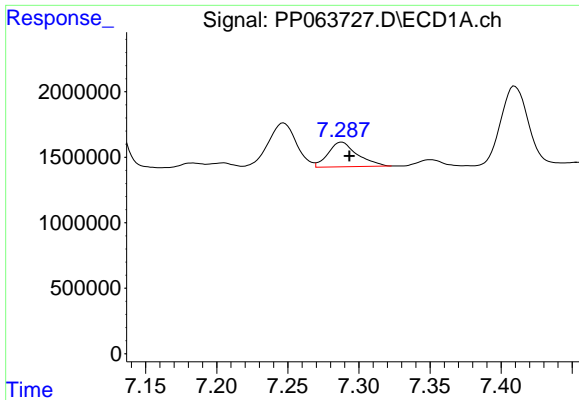
#30 AR-1254-5

R.T.: 7.831 min
 Delta R.T.: -0.005 min
 Response: 5054306
 Conc: 42.99 ng/ml



#30 AR-1254-5

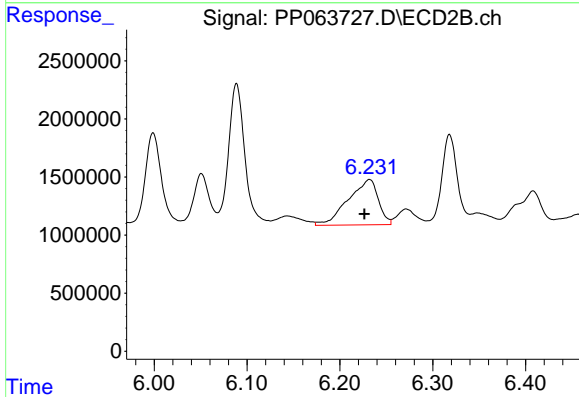
R.T.: 6.738 min
 Delta R.T.: -0.005 min
 Response: 5832236
 Conc: 34.94 ng/ml



#31 AR-1260-1

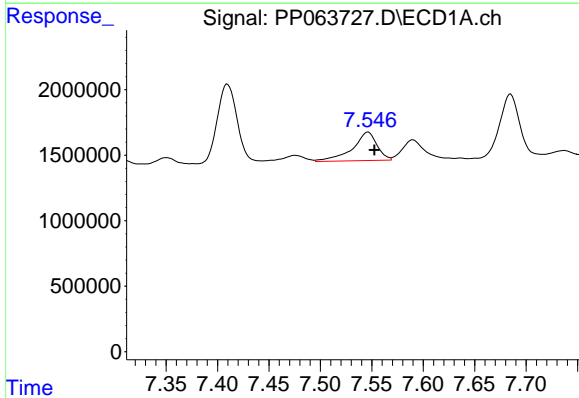
R.T.: 7.288 min
 Delta R.T.: -0.005 min
 Response: 2688844
 Conc: 21.29 ng/ml

Instrument :
 ECD_P
 ClientSampleId :
 AR1242CCC500



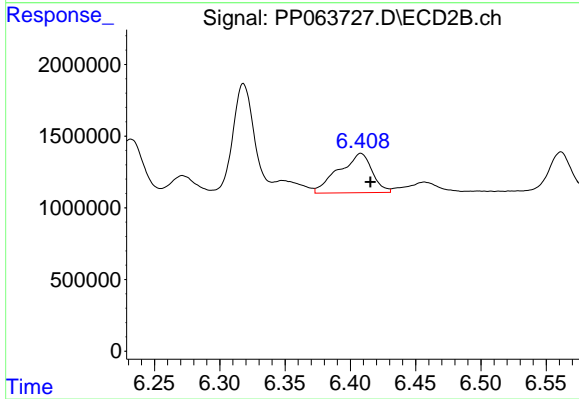
#31 AR-1260-1

R.T.: 6.232 min
 Delta R.T.: 0.006 min
 Response: 8774368
 Conc: 61.40 ng/ml



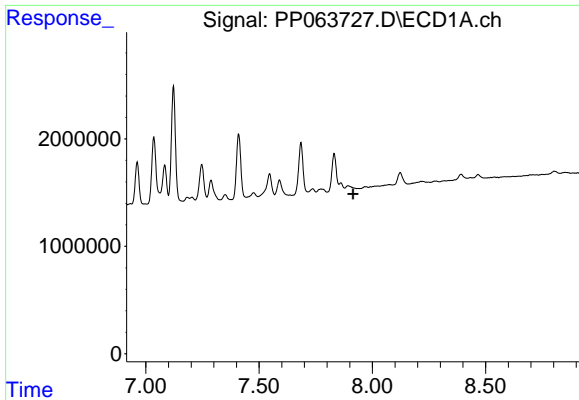
#32 AR-1260-2

R.T.: 7.546 min
 Delta R.T.: -0.006 min
 Response: 3605923
 Conc: 25.26 ng/ml



#32 AR-1260-2

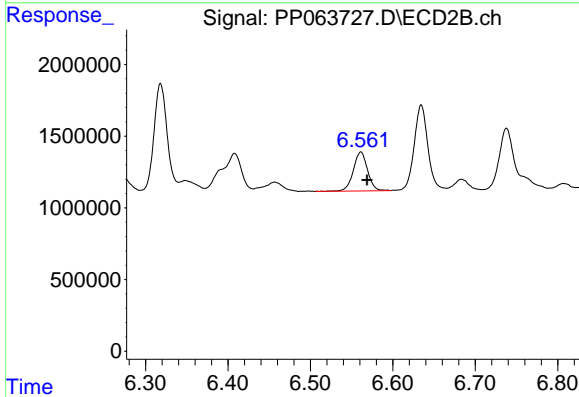
R.T.: 6.408 min
 Delta R.T.: -0.007 min
 Response: 4877928
 Conc: 28.86 ng/ml



#33 AR-1260-3

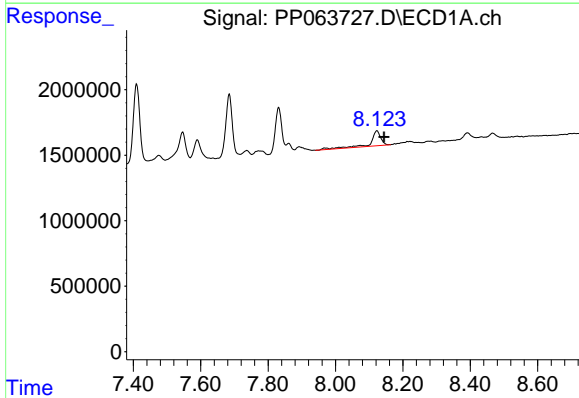
R.T.: 0.000 min
 Exp R.T.: 7.915 min
 Response: 0
 Conc: N.D.

Instrument :
 ECD_P
 ClientSampleId :
 AR1242CCC500



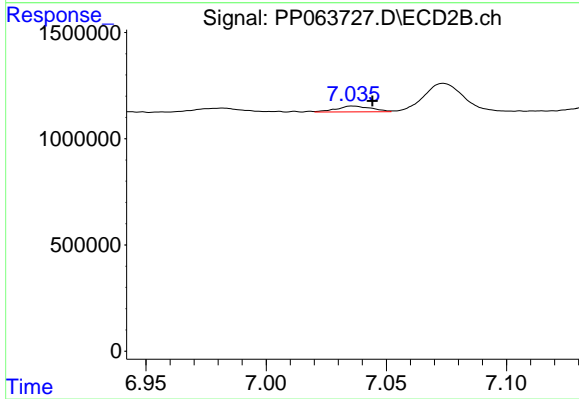
#33 AR-1260-3

R.T.: 6.561 min
 Delta R.T.: -0.008 min
 Response: 3250660
 Conc: 20.22 ng/ml



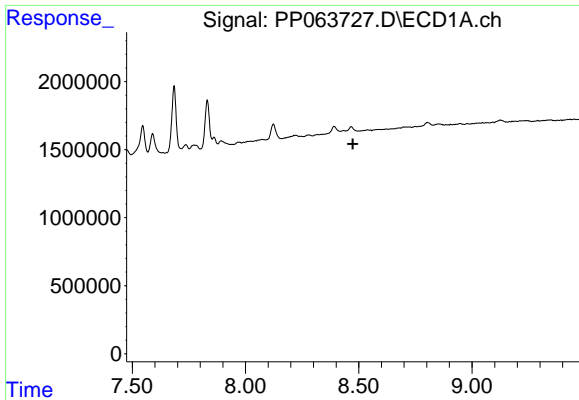
#34 AR-1260-4

R.T.: 8.123 min
 Delta R.T.: -0.021 min
 Response: 2387671
 Conc: 19.85 ng/ml



#34 AR-1260-4

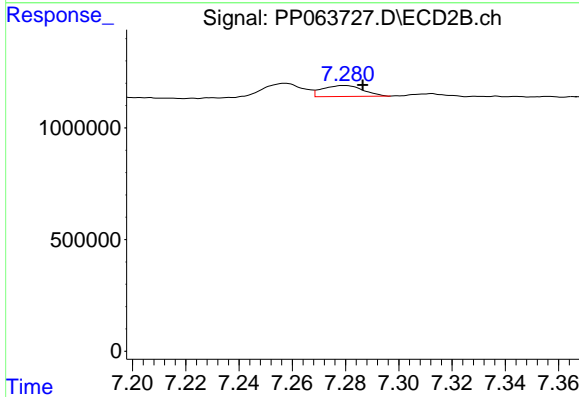
R.T.: 7.036 min
 Delta R.T.: -0.008 min
 Response: 280119
 Conc: 2.30 ng/ml



#35 AR-1260-5

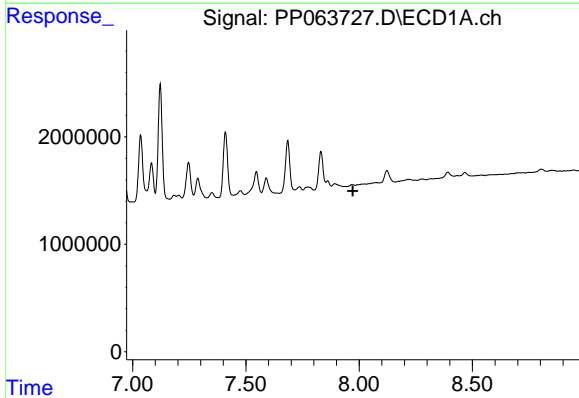
R.T.: 0.000 min
 Exp R.T.: 8.474 min
 Response: 0
 Conc: N.D.

Instrument :
 ECD_P
 ClientSampleId :
 AR1242CCC500



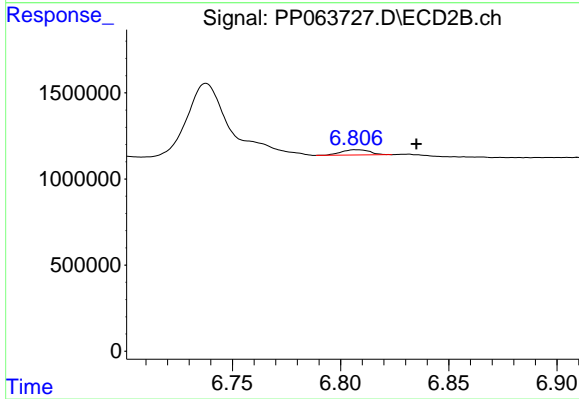
#35 AR-1260-5

R.T.: 7.280 min
 Delta R.T.: -0.007 min
 Response: 518457
 Conc: 1.94 ng/ml



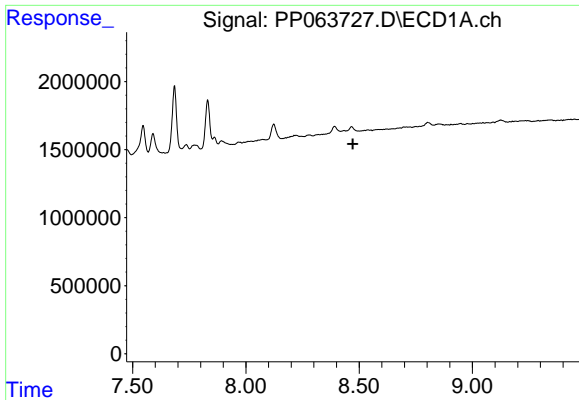
#36 AR-1262-1

R.T.: 0.000 min
 Exp R.T.: 7.972 min
 Response: 0
 Conc: N.D.



#36 AR-1262-1

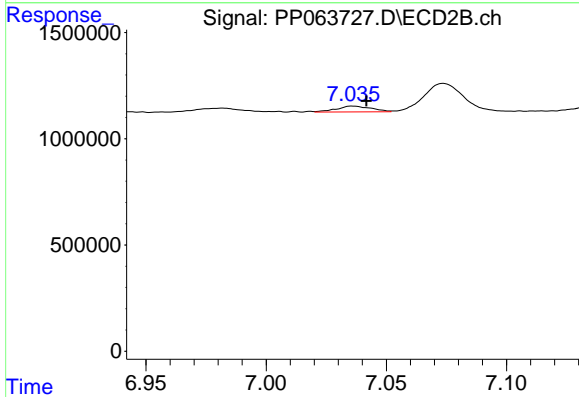
R.T.: 6.807 min
 Delta R.T.: -0.028 min
 Response: 282016
 Conc: 4.18 ng/ml



#37 AR-1262-2

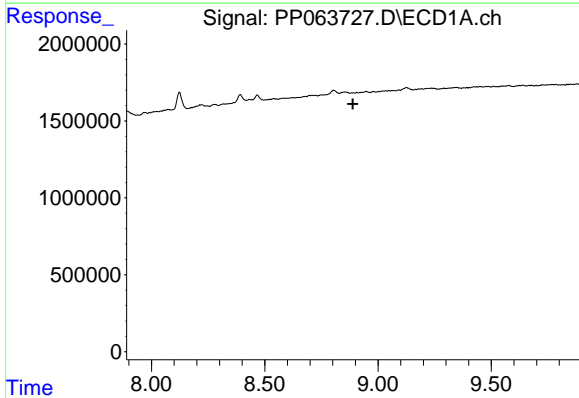
R.T.: 0.000 min
 Exp R.T. : 8.472 min
 Response: 0
 Conc: N.D.

Instrument :
 ECD_P
 ClientSampleId :
 AR1242CCC500



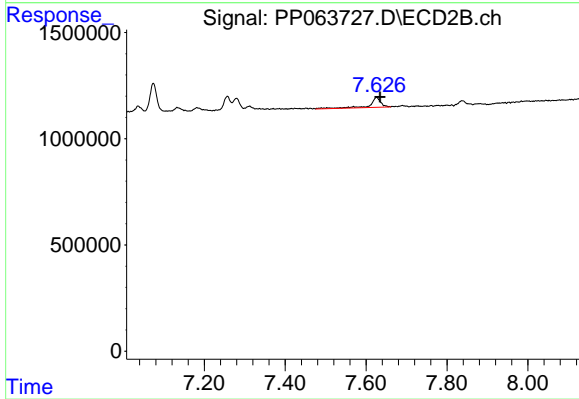
#37 AR-1262-2

R.T.: 7.036 min
 Delta R.T.: -0.006 min
 Response: 280119
 Conc: 1.75 ng/ml



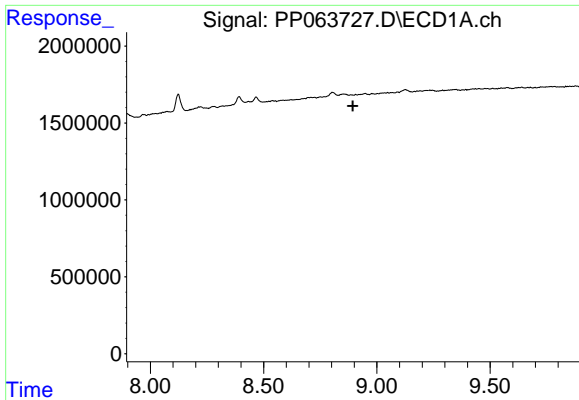
#39 AR-1262-4

R.T.: 0.000 min
 Exp R.T. : 8.889 min
 Response: 0
 Conc: N.D.



#39 AR-1262-4

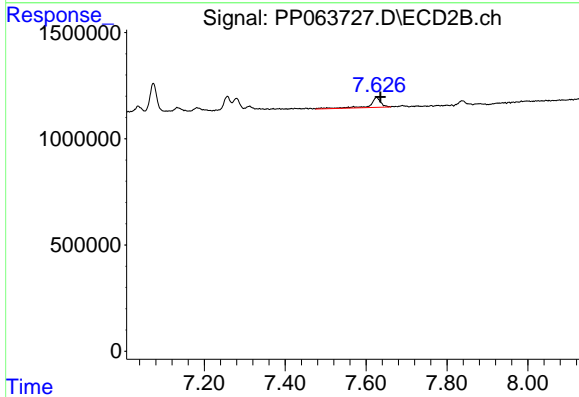
R.T.: 7.626 min
 Delta R.T.: -0.008 min
 Response: 884552
 Conc: 4.14 ng/ml



#42 AR-1268-2

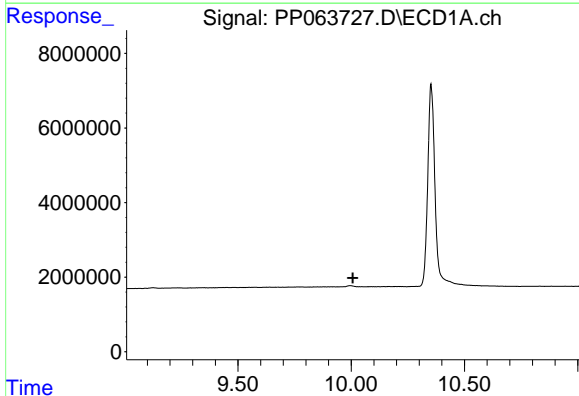
R.T.: 0.000 min
 Exp R.T.: 8.893 min
 Response: 0
 Conc: N.D.

Instrument :
 ECD_P
 ClientSampleId :
 AR1242CCC500



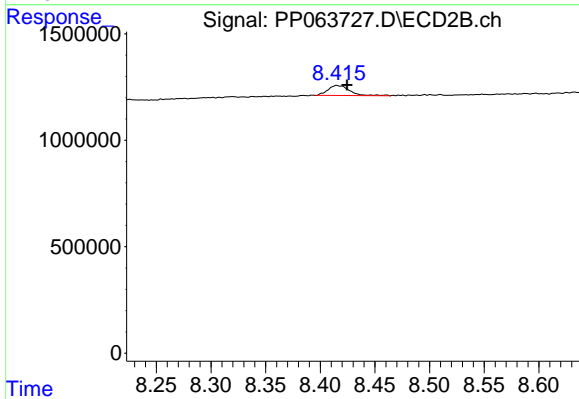
#42 AR-1268-2

R.T.: 7.626 min
 Delta R.T.: -0.009 min
 Response: 884552
 Conc: 2.57 ng/ml



#45 AR-1268-5

R.T.: 0.000 min
 Exp R.T.: 10.008 min
 Response: 0
 Conc: N.D.



#45 AR-1268-5

R.T.: 8.415 min
 Delta R.T.: -0.009 min
 Response: 646800
 Conc: 0.78 ng/ml