

Data Path : Z:\pestpcbsrv\HPCHEM1\ECD\_P\Data\PP032422\  
 Data File : PP045091.D  
 Signal(s) : Signal #1: ECD1A.ch Signal #2: ECD2B.ch  
 Acq On : 24 Mar 2022 15:21  
 Operator : YP\AJ  
 Sample : N2077-15  
 Misc :  
 ALS Vial : 13 Sample Multiplier: 1

Instrument :  
 ECD\_P  
 ClientSampleId :  
 WC-14A-3-3

Integration File signal 1: autoint1.e  
 Integration File signal 2: autoint2.e  
 Quant Time: Mar 25 03:04:20 2022  
 Quant Method : Z:\pestpcbsrv\HPCHEM1\ECD\_P\methods\PP031722.M  
 Quant Title : GC EXTRACTABLES  
 QLast Update : Thu Mar 17 04:32:40 2022  
 Response via : Initial Calibration  
 Integrator: ChemStation

Volume Inj. : 2 µl  
 Signal #1 Phase : ZB-MR1 Signal #2 Phase: ZB-MR2  
 Signal #1 Info : 30Mx0.32mmx 0.50µ Signal #2 Info : 30M x 0.32mm x 0.25µm

Compound	RT#1	RT#2	Resp#1	Resp#2	ng/ml	ng/ml
-----						
System Monitoring Compounds						
1) SA Tetrachlo...	3.895	3.159	25151584	16408451	13.804	12.451
2) SA Decachlor...	10.018	8.513	20837759	17847930	16.188	13.736

Target Compounds

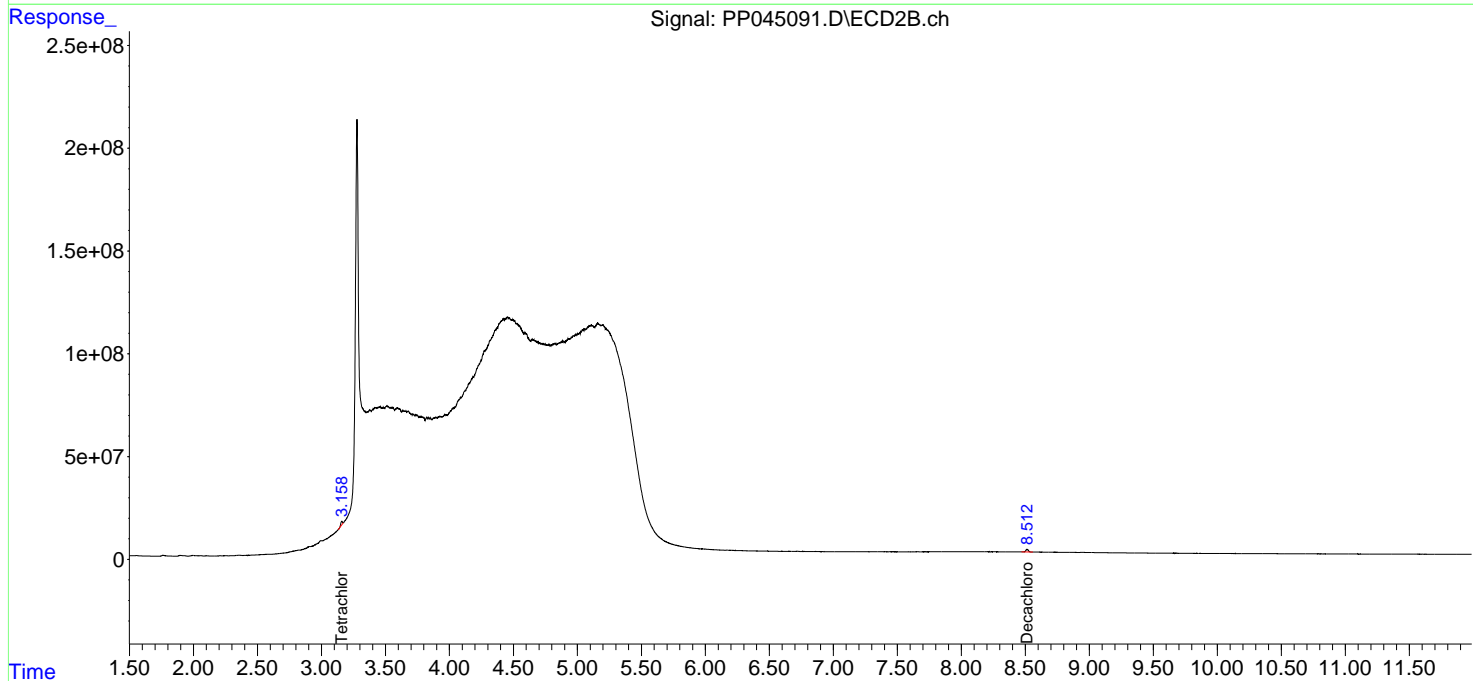
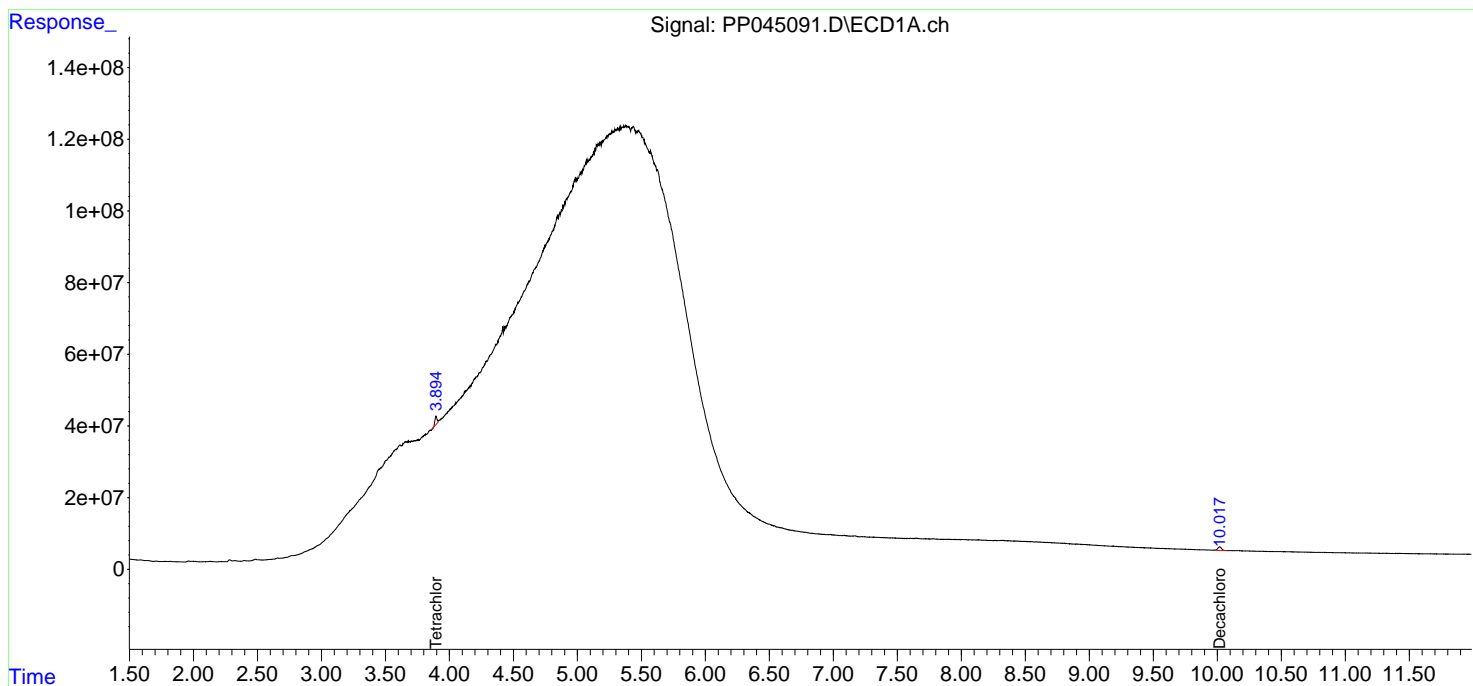
-----  
 (f)=RT Delta > 1/2 Window (#)=Amounts differ by > 25% (m)=manual int.

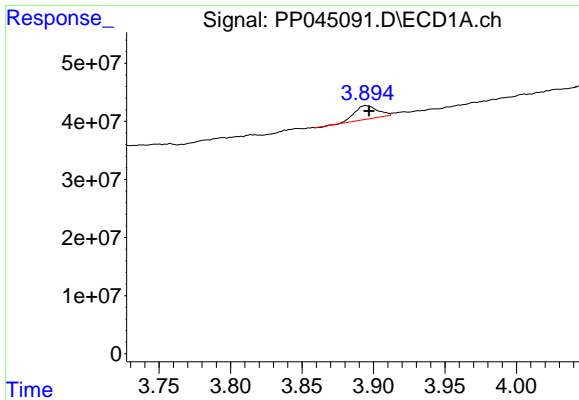
Data Path : Z:\pestpcbsrv\HPCHEM1\ECD\_P\Data\PP032422\  
 Data File : PP045091.D  
 Signal(s) : Signal #1: ECD1A.ch Signal #2: ECD2B.ch  
 Acq On : 24 Mar 2022 15:21  
 Operator : YP\AJ  
 Sample : N2077-15  
 Misc :  
 ALS Vial : 13 Sample Multiplier: 1

**Instrument :**  
 ECD\_P  
**ClientSampleId :**  
 WC-14A-3-3

Integration File signal 1: autoint1.e  
 Integration File signal 2: autoint2.e  
 Quant Time: Mar 25 03:04:20 2022  
 Quant Method : Z:\pestpcbsrv\HPCHEM1\ECD\_P\methods\PP031722.M  
 Quant Title : GC EXTRACTABLES  
 QLast Update : Thu Mar 17 04:32:40 2022  
 Response via : Initial Calibration  
 Integrator: ChemStation

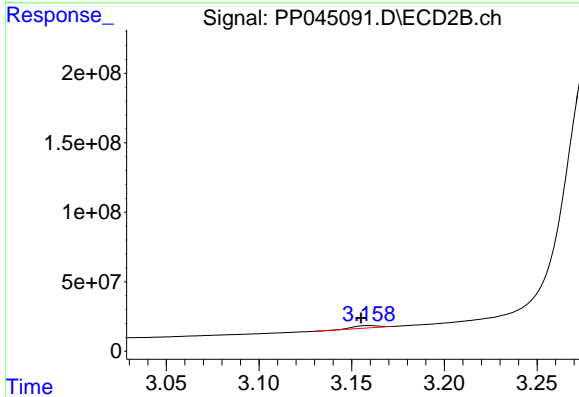
Volume Inj. : 2 µl  
 Signal #1 Phase : ZB-MR1 Signal #2 Phase: ZB-MR2  
 Signal #1 Info : 30Mx0.32mmx 0.50µ Signal #2 Info : 30M x 0.32mm x 0.25µm



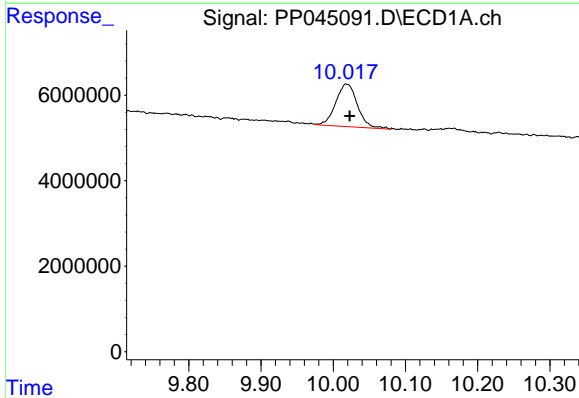


#1 Tetrachloro-m-xylene  
R.T.: 3.895 min  
Delta R.T.: -0.002 min  
Response: 25151584  
Conc: 13.80 ng/ml

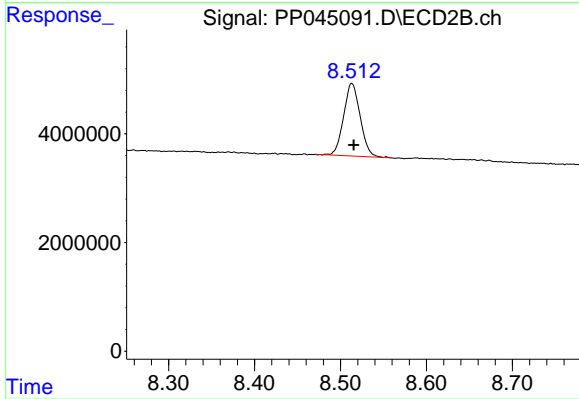
Instrument :  
ECD\_P  
ClientSampleId :  
WC-14A-3-3



#1 Tetrachloro-m-xylene  
R.T.: 3.159 min  
Delta R.T.: 0.004 min  
Response: 16408451  
Conc: 12.45 ng/ml



#2 Decachlorobiphenyl  
R.T.: 10.018 min  
Delta R.T.: -0.005 min  
Response: 20837759  
Conc: 16.19 ng/ml



#2 Decachlorobiphenyl  
R.T.: 8.513 min  
Delta R.T.: -0.002 min  
Response: 17847930  
Conc: 13.74 ng/ml