

Data Path : Z:\pestpcbsrv\HPCHEM1\ECD_P\Data\PP032423\
 Data File : PP056585.D
 Signal(s) : Signal #1: ECD1A.ch Signal #2: ECD2B.ch
 Acq On : 24 Mar 2023 20:59
 Operator : YP\AJ
 Sample : 02050-11 10X
 Misc :
 ALS Vial : 19 Sample Multiplier: 1

Instrument :
 ECD_P
 ClientSampleId :
 JMA187K-2-1

Integration File signal 1: autoint1.e
 Integration File signal 2: autoint2.e
 Quant Time: Mar 26 21:29:06 2023
 Quant Method : Z:\pestpcbsrv\HPCHEM1\ECD_P\methods\PP031623.M
 Quant Title : GC EXTRACTABLES
 QLast Update : Fri Mar 17 04:34:46 2023
 Response via : Initial Calibration
 Integrator: ChemStation

Volume Inj. : 2 µl
 Signal #1 Phase : ZB-MR1 Signal #2 Phase: ZB-MR2
 Signal #1 Info : 30Mx0.32mmx 0.50µ Signal #2 Info : 30M x 0.32mm x 0.25µm

Compound	RT#1	RT#2	Resp#1	Resp#2	ng/ml	ng/ml

System Monitoring Compounds						
1) SA Tetrachlo...	4.439	3.668	3580440	3395360	1.752	1.726
2) SA Decachlor...	10.274	8.763	3814109	3228172	2.633	2.122

Target Compounds

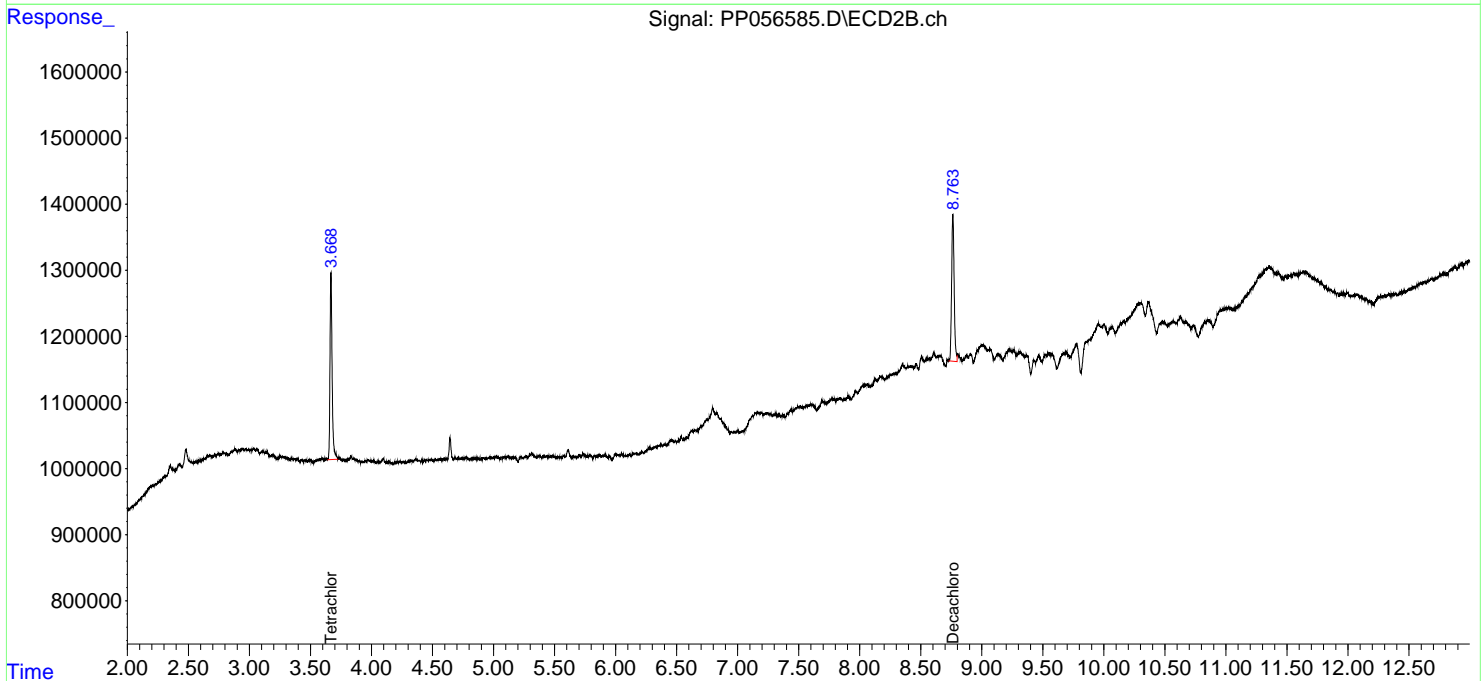
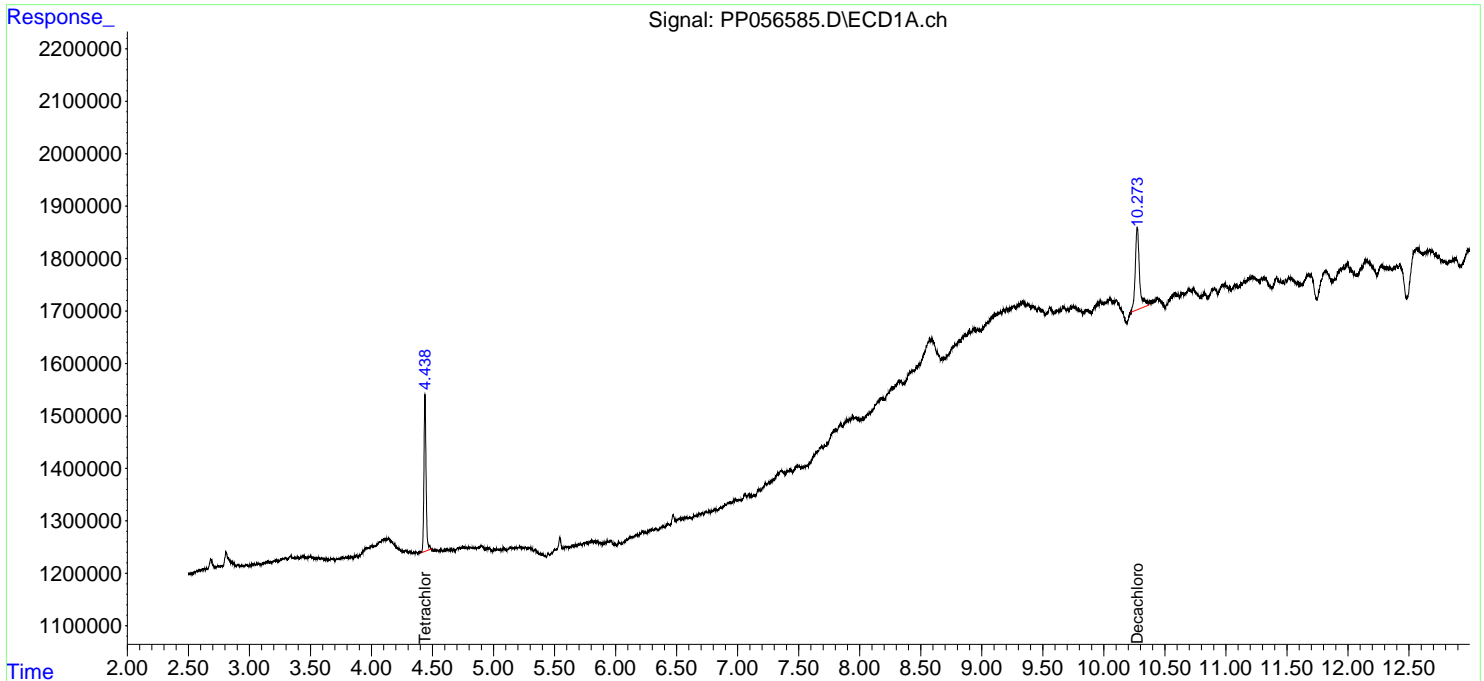
(f)=RT Delta > 1/2 Window (#)=Amounts differ by > 25% (m)=manual int.

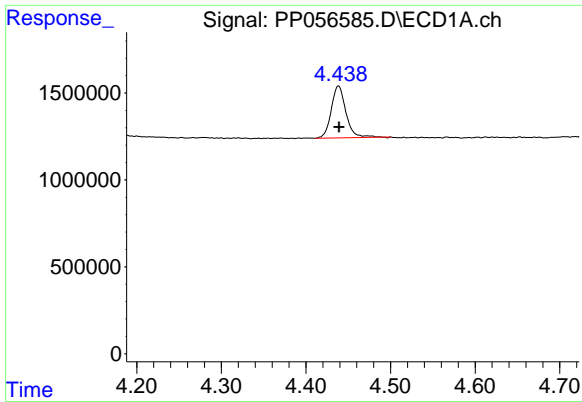
Data Path : Z:\pestpcbsrv\HPCHEM1\ECD_P\Data\PP032423\
 Data File : PP056585.D
 Signal(s) : Signal #1: ECD1A.ch Signal #2: ECD2B.ch
 Acq On : 24 Mar 2023 20:59
 Operator : YP\AJ
 Sample : 02050-11 10X
 Misc :
 ALS Vial : 19 Sample Multiplier: 1

Instrument :
 ECD_P
 ClientSampleId :
 JMA187K-2-1

Integration File signal 1: autoint1.e
 Integration File signal 2: autoint2.e
 Quant Time: Mar 26 21:29:06 2023
 Quant Method : Z:\pestpcbsrv\HPCHEM1\ECD_P\methods\PP031623.M
 Quant Title : GC EXTRACTABLES
 QLast Update : Fri Mar 17 04:34:46 2023
 Response via : Initial Calibration
 Integrator: ChemStation

Volume Inj. : 2 µl
 Signal #1 Phase : ZB-MR1 Signal #2 Phase: ZB-MR2
 Signal #1 Info : 30Mx0.32mmx 0.50µ Signal #2 Info : 30M x 0.32mm x 0.25µm

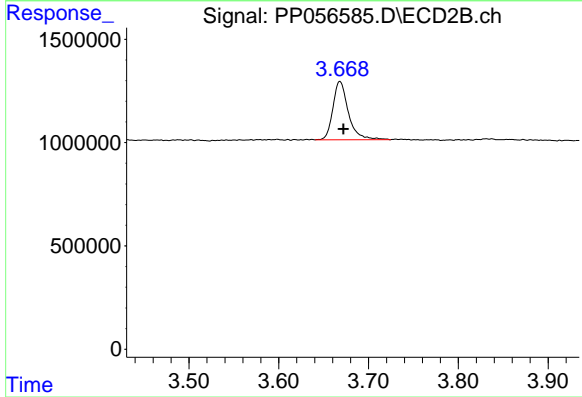




#1 Tetrachloro-m-xylene

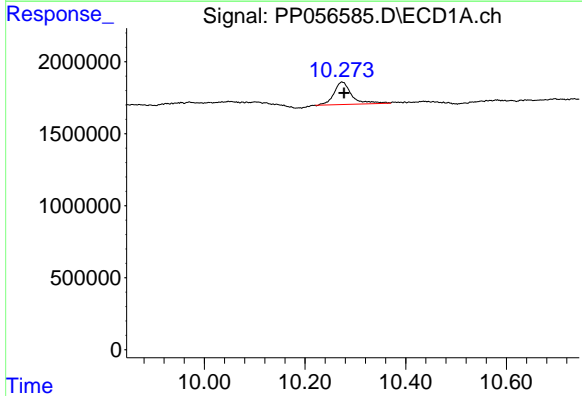
R.T.: 4.439 min
 Delta R.T.: 0.000 min
 Response: 3580440
 Conc: 1.75 ng/ml

Instrument :
 ECD_P
 ClientSampleId :
 JMA187K-2-1



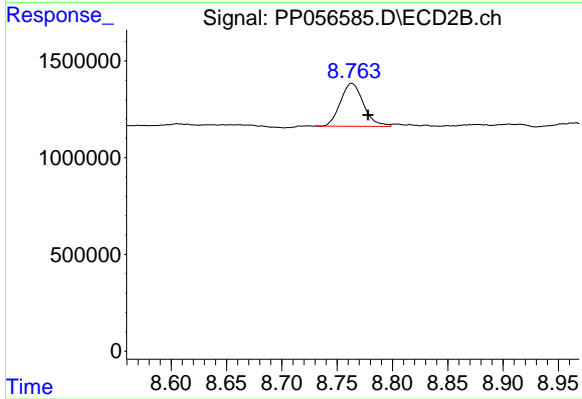
#1 Tetrachloro-m-xylene

R.T.: 3.668 min
 Delta R.T.: -0.004 min
 Response: 3395360
 Conc: 1.73 ng/ml



#2 Decachlorobiphenyl

R.T.: 10.274 min
 Delta R.T.: -0.004 min
 Response: 3814109
 Conc: 2.63 ng/ml



#2 Decachlorobiphenyl

R.T.: 8.763 min
 Delta R.T.: -0.015 min
 Response: 3228172
 Conc: 2.12 ng/ml