

Data Path : Z:\pestpcbsrv\HPCHEM1\ECD_P\Data\PP032521\
 Data File : PP034382.D
 Signal(s) : Signal #1: ECD1A.CH Signal #2: ECD2B.CH
 Acq On : 25 Mar 2021 20:05
 Operator : DD\AJ
 Sample : AR1242CCC500
 Misc :
 ALS Vial : 4 Sample Multiplier: 1

Instrument :
 ECD_P
ClientSampleId :
 AR1242CCC500

Manual Integrations
APPROVED

Ankita
 3/26/2021 1:13:24 PM

Integration File signal 1: autoint1.e
 Integration File signal 2: autoint2.e
 Quant Time: Mar 26 03:17:23 2021
 Quant Method : Z:\pestpcbsrv\HPCHEM1\ECD_P\methods\PP031821.M
 Quant Title : GC EXTRACTABLES
 QLast Update : Sat Mar 20 01:42:16 2021
 Response via : Initial Calibration
 Integrator: ChemStation 6890 Scale Mode: Small noise peaks clipped

Volume Inj. : 2 µl
 Signal #1 Phase : ZB-MR2 Signal #2 Phase: ZB-MR2
 Signal #1 Info : 30Mx0.32mmx 0.50µ Signal #2 Info : 30M x 0.32mm x 0.25µm

| Compound | RT#1 | RT#2 | Resp#1 | Resp#2 | ng/ml | ng/ml |
|-----------------------------|--------|-------|---------|---------|----------|---------|
| ----- | | | | | | |
| System Monitoring Compounds | | | | | | |
| 1) SA Tetrachlo... | 4.849 | 4.260 | 3308159 | 1870121 | 39.380 | 42.260 |
| 2) SA Decachlor... | 10.773 | 9.574 | 3369804 | 1249046 | 42.940 | 47.332 |
| Target Compounds | | | | | | |
| 16) L4 AR-1242-1 | 6.161 | 5.515 | 797344 | 386824 | 400.137m | 424.686 |
| 17) L4 AR-1242-2 | 6.185 | 5.536 | 1197962 | 570771 | 402.907m | 434.835 |
| 18) L4 AR-1242-3 | 6.251 | 5.729 | 757924 | 315793 | 407.304 | 434.314 |
| 19) L4 AR-1242-4 | 6.356 | 5.823 | 604886 | 309165 | 401.247m | 426.777 |
| 20) L4 AR-1242-5 | 7.137 | 6.384 | 675644 | 349709 | 443.180 | 445.575 |
| ----- | | | | | | |

(f)=RT Delta > 1/2 Window (#)=Amounts differ by > 25% (m)=manual int.

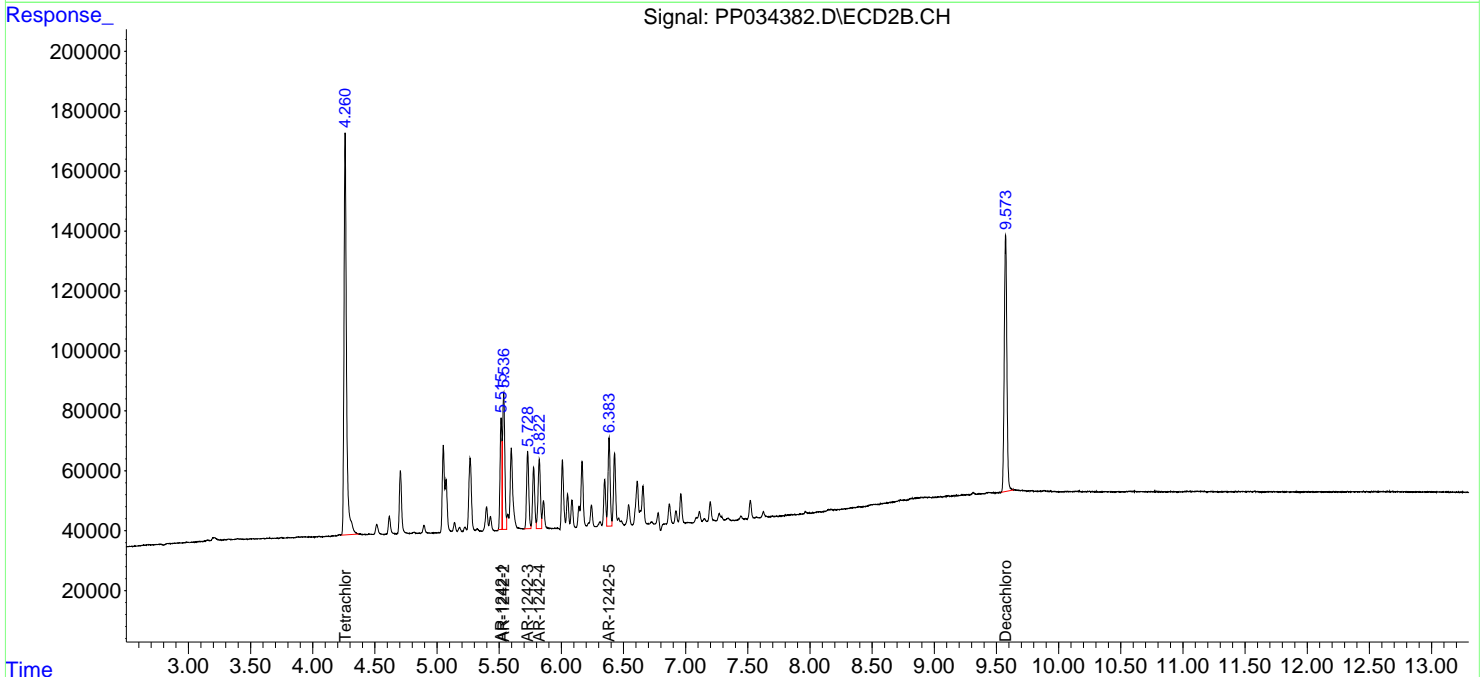
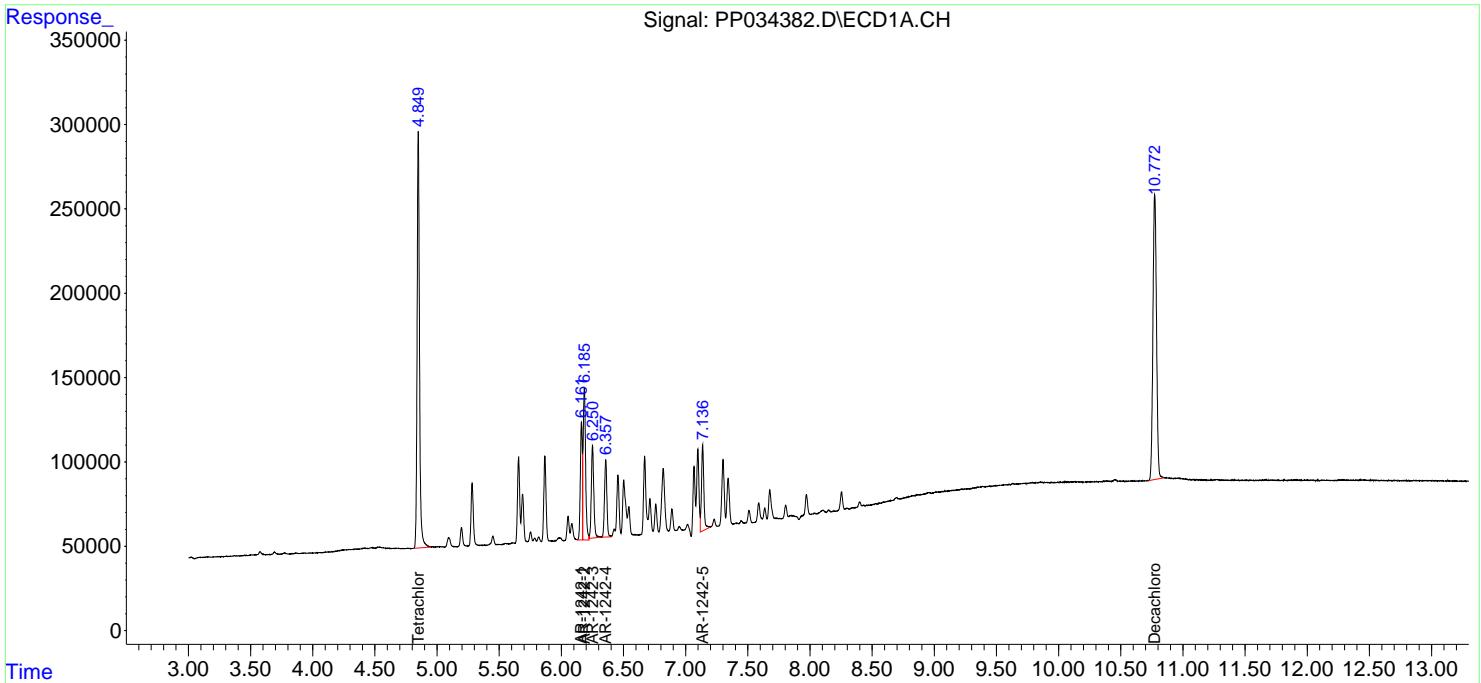
Data Path : Z:\pestpcbsrv\HPCHEM1\ECD_P\Data\PP032521\
 Data File : PP034382.D
 Signal(s) : Signal #1: ECD1A.CH Signal #2: ECD2B.CH
 Acq On : 25 Mar 2021 20:05
 Operator : DD\AJ
 Sample : AR1242CCC500
 Misc :
 ALS Vial : 4 Sample Multiplier: 1

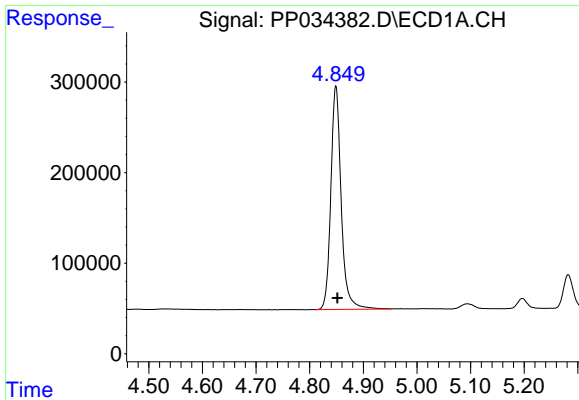
Instrument :
 ECD_P
Client Sampled :
 AR1242CCC500

Manual Integrations
APPROVED
 Ankita
 3/26/2021 1:13:24 PM

Integration File signal 1: autoint1.e
 Integration File signal 2: autoint2.e
 Quant Time: Mar 26 03:17:23 2021
 Quant Method : Z:\pestpcbsrv\HPCHEM1\ECD_P\methods\PP031821.M
 Quant Title : GC EXTRACTABLES
 QLast Update : Sat Mar 20 01:42:16 2021
 Response via : Initial Calibration
 Integrator: ChemStation 6890 Scale Mode: Small noise peaks clipped

Volume Inj. : 2 µl
 Signal #1 Phase : ZB-MR1 Signal #2 Phase: ZB-MR2
 Signal #1 Info : 30Mx0.32mmx 0.50µ Signal #2 Info : 30M x 0.32mm x 0.25µm

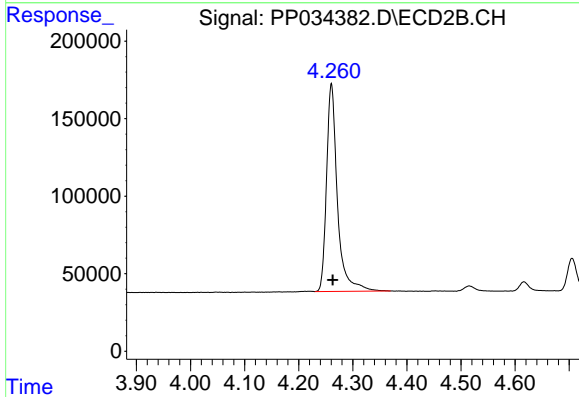




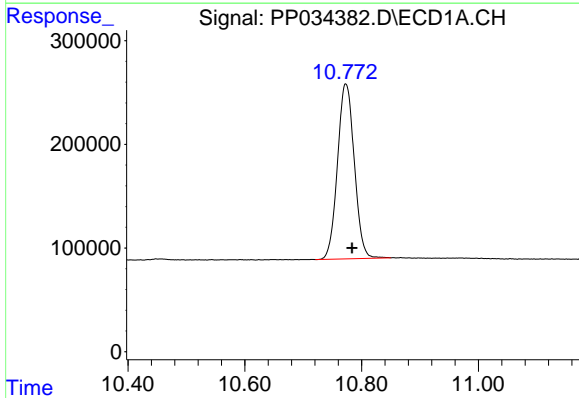
#1 Tetrachloro-m-xylene
 R.T.: 4.849 min
 Delta R.T.: -0.003 min
 Response: 3308159
 Conc: 39.38 ng/ml

Instrument :
 ECD_P
 ClientSampleId :
 AR1242CCC500

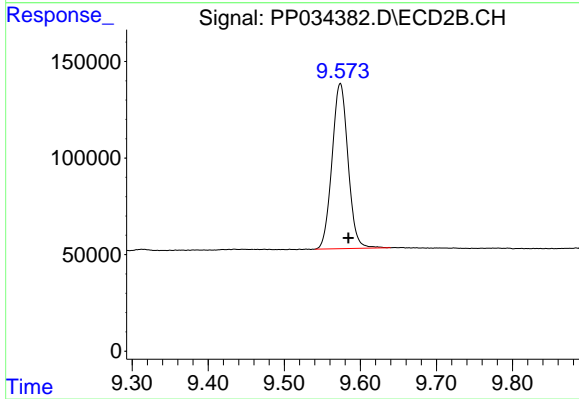
Manual Integrations
 APPROVED
 Ankita
 3/26/2021 1:13:24 PM



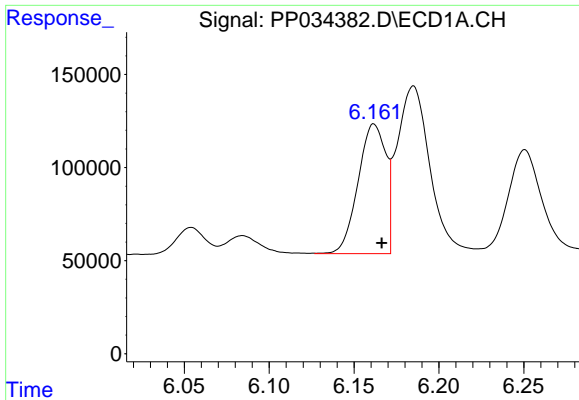
#1 Tetrachloro-m-xylene
 R.T.: 4.260 min
 Delta R.T.: -0.002 min
 Response: 1870121
 Conc: 42.26 ng/ml



#2 Decachlorobiphenyl
 R.T.: 10.773 min
 Delta R.T.: -0.011 min
 Response: 3369804
 Conc: 42.94 ng/ml



#2 Decachlorobiphenyl
 R.T.: 9.574 min
 Delta R.T.: -0.011 min
 Response: 1249046
 Conc: 47.33 ng/ml

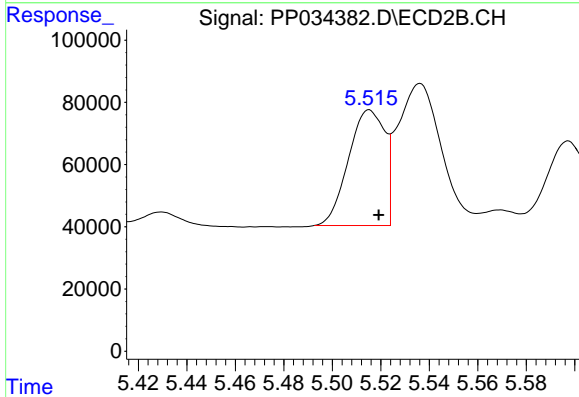


#16 AR-1242-1

R.T.: 6.161 min
 Delta R.T.: -0.005 min
 Response: 797344
 Conc: 400.14 ng/ml m

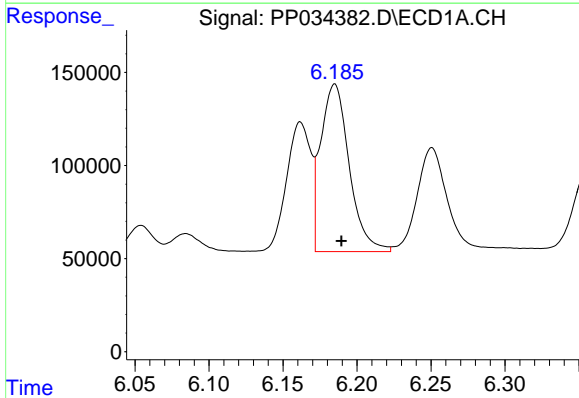
Instrument :
 ECD_P
ClientSampled :
 AR1242CCC500

Manual Integrations
APPROVED
 Ankita
 3/26/2021 1:13:24 PM



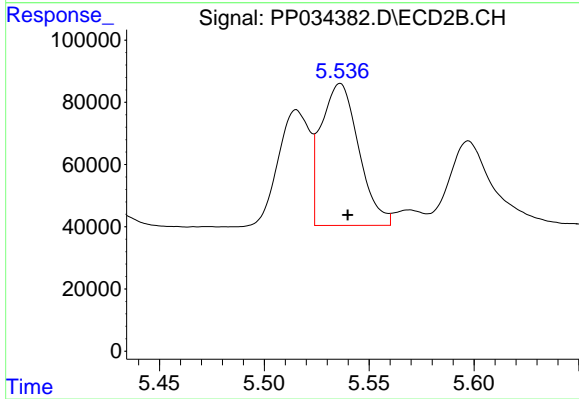
#16 AR-1242-1

R.T.: 5.515 min
 Delta R.T.: -0.004 min
 Response: 386824
 Conc: 424.69 ng/ml



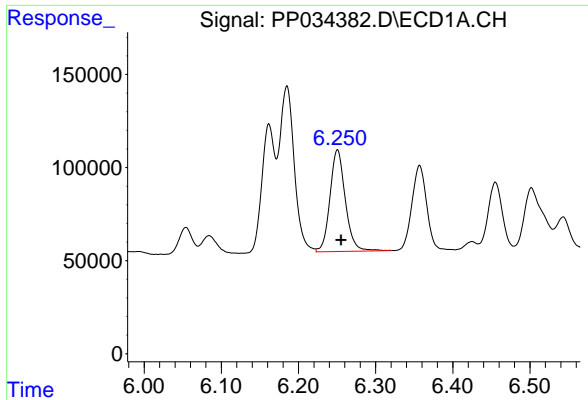
#17 AR-1242-2

R.T.: 6.185 min
 Delta R.T.: -0.005 min
 Response: 1197962
 Conc: 402.91 ng/ml m



#17 AR-1242-2

R.T.: 5.536 min
 Delta R.T.: -0.004 min
 Response: 570771
 Conc: 434.83 ng/ml

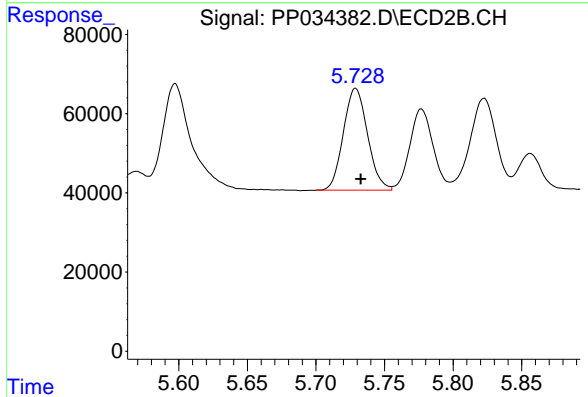


#18 AR-1242-3

R.T.: 6.251 min
 Delta R.T.: -0.005 min
 Response: 757924
 Conc: 407.30 ng/ml

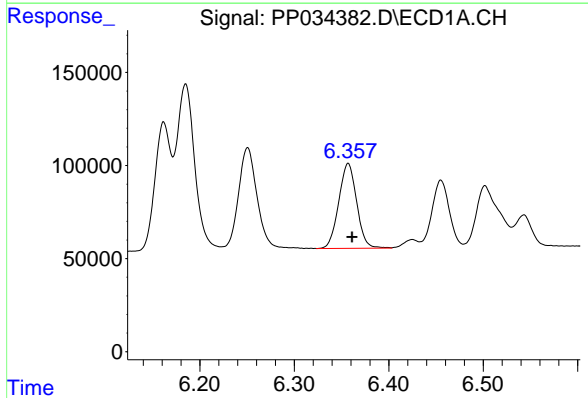
Instrument :
 ECD_P
ClientSampleId :
 AR1242CCC500

Manual Integrations
APPROVED
 Ankita
 3/26/2021 1:13:24 PM



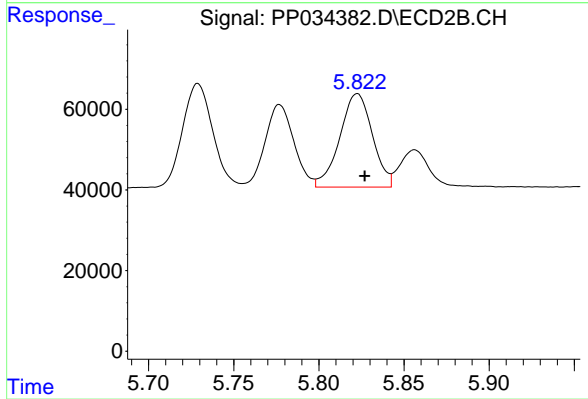
#18 AR-1242-3

R.T.: 5.729 min
 Delta R.T.: -0.004 min
 Response: 315793
 Conc: 434.31 ng/ml



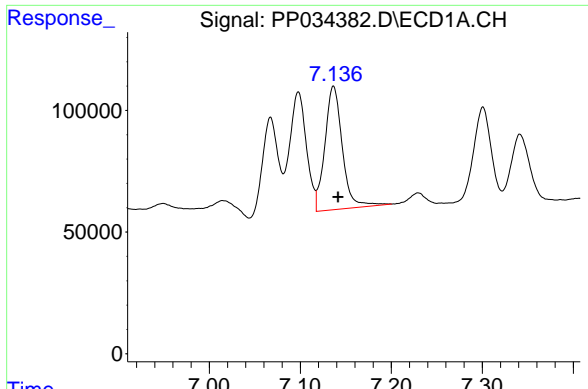
#19 AR-1242-4

R.T.: 6.356 min
 Delta R.T.: -0.004 min
 Response: 604886
 Conc: 401.25 ng/ml m



#19 AR-1242-4

R.T.: 5.823 min
 Delta R.T.: -0.004 min
 Response: 309165
 Conc: 426.78 ng/ml

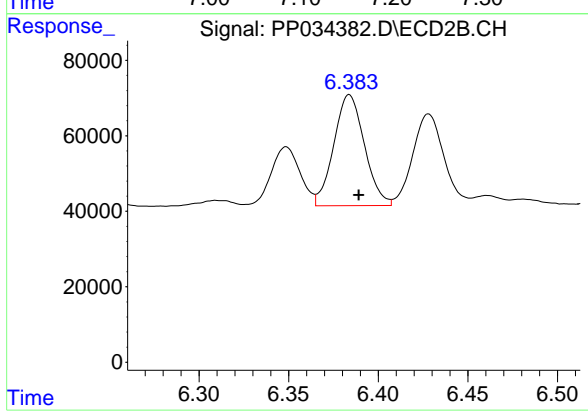


#20 AR-1242-5

R.T.: 7.137 min
 Delta R.T.: -0.005 min
 Response: 675644
 Conc: 443.18 ng/ml

Instrument :
 ECD_P
ClientSampleId :
 AR1242CCC500

Manual Integrations
APPROVED
 Ankita
 3/26/2021 1:13:24 PM



#20 AR-1242-5

R.T.: 6.384 min
 Delta R.T.: -0.005 min
 Response: 349709
 Conc: 445.58 ng/ml