

Data Path : Z:\pestpcbsrv\HPCHEM1\ECD\_P\Data\PP032522\  
 Data File : PP045224.D  
 Signal(s) : Signal #1: ECD1A.ch Signal #2: ECD2B.ch  
 Acq On : 27 Mar 2022 06:23  
 Operator : YP\AJ  
 Sample : N2095-06  
 Misc :  
 ALS Vial : 42 Sample Multiplier: 1

Instrument :  
 ECD\_P  
 ClientSampleId :

Integration File signal 1: autoint1.e  
 Integration File signal 2: autoint2.e  
 Quant Time: Mar 28 01:06:17 2022  
 Quant Method : Z:\pestpcbsrv\HPCHEM1\ECD\_P\methods\PP031722.M  
 Quant Title : GC EXTRACTABLES  
 QLast Update : Thu Mar 17 04:32:40 2022  
 Response via : Initial Calibration  
 Integrator: ChemStation

Volume Inj. : 2 µl  
 Signal #1 Phase : ZB-MR1 Signal #2 Phase: ZB-MR2  
 Signal #1 Info : 30Mx0.32mmx 0.50µ Signal #2 Info : 30M x 0.32mm x 0.25µm

| Compound                    | RT#1   | RT#2   | Resp#1   | Resp#2   | ng/ml  | ng/ml    |
|-----------------------------|--------|--------|----------|----------|--------|----------|
| -----                       |        |        |          |          |        |          |
| System Monitoring Compounds |        |        |          |          |        |          |
| 1) SA Tetrachlo...          | 3.890  | 3.151  | 47186725 | 34154870 | 25.898 | 25.917   |
| 2) SA Decachlor...          | 10.009 | 8.502  | 29579169 | 25690544 | 22.978 | 19.771   |
| Target Compounds            |        |        |          |          |        |          |
| 3) L1 AR-1016-1             | 5.151  | 4.298  | 638881   | 67884    | 10.888 | 1.340 #  |
| 4) L1 AR-1016-2             | 5.170  | 4.311  | 1257977  | 218175   | 14.072 | 3.026 #  |
| 5) L1 AR-1016-3             | 5.230  | 4.507  | 1522693  | 61609    | 29.258 | 1.566 #  |
| 6) L1 AR-1016-4             | 5.350  | 4.544  | 326934   | 198438   | 7.640  | 6.303    |
| 7) L1 AR-1016-5             | 5.685f | 4.785  | -3427    | 124571   | N.D.   | 3.121 #  |
| 8) L2 AR-1221-1             | 4.140  | 3.380  | 97897    | 33002    | 4.770  | 2.223 #  |
| 9) L2 AR-1221-2             | 4.238  | 3.463  | 78119    | 1227917  | 5.110  | 99.115 # |
| 10) L2 AR-1221-3            | 4.301f | 3.547  | 133889   | 178200   | 2.773  | 4.591 #  |
| 11) L3 AR-1232-1            | 4.301  | 3.547  | 133889   | 178200   | 2.976  | 4.958 #  |
| 12) L3 AR-1232-2            | 4.859  | 4.311  | 766738   | 218175   | 36.488 | 6.309 #  |
| 13) L3 AR-1232-3            | 5.170  | 4.507  | 1257977  | 61609    | 30.154 | 3.289 #  |
| 14) L3 AR-1232-4            | 5.350  | 4.596  | 326934   | 98155    | 16.347 | 5.929 #  |
| 15) L3 AR-1232-5            | 5.434  | 4.785  | 486364   | 124571   | 34.419 | 6.737 #  |
| 16) L4 AR-1242-1            | 5.151  | 4.298  | 638881   | 67884    | 13.923 | 1.699 #  |
| 17) L4 AR-1242-2            | 5.170  | 4.311  | 1257977  | 218175   | 17.964 | 3.844 #  |
| 18) L4 AR-1242-3            | 5.230  | 4.507  | 1522693  | 61609    | 37.074 | 1.976 #  |
| 19) L4 AR-1242-4            | 5.350  | 4.596  | 326934   | 98155    | 9.505  | 3.239 #  |
| 20) L4 AR-1242-5            | 6.142  | 5.141  | 663694   | 307986   | 18.150 | 7.742 #  |
| 21) L5 AR-1248-1            | 5.151  | 4.298  | 638881   | 67884    | 18.165 | 2.150 #  |
| 22) L5 AR-1248-2            | 5.434  | 4.544  | 486364   | 198438   | 10.282 | 4.537 #  |
| 23) L5 AR-1248-3            | 5.685f | 4.596  | -3427    | 98155    | N.D.   | 2.148 #  |
| 24) L5 AR-1248-4            | 6.094  | 4.785  | 432345   | 124571   | 6.813  | 2.306 #  |
| 25) L5 AR-1248-5            | 6.142  | 5.189  | 663694   | 516573   | 10.637 | 9.201    |
| 26) L6 AR-1254-1            | 6.094f | 5.141  | 432345   | 307986   | 6.511  | 3.562 #  |
| 27) L6 AR-1254-2            | 6.321  | 5.311  | 618039   | 67734    | 6.186  | 0.910 #  |
| 28) L6 AR-1254-3            | 6.715  | 5.731  | 1082884  | 385714   | 10.587 | 3.357 #  |
| 29) L6 AR-1254-4            | 7.019  | 5.986  | 244036   | 33617    | 3.355  | 0.451 #  |
| 30) L6 AR-1254-5            | 7.484  | 6.433  | 130698   | 256022   | 1.690  | 2.486 #  |
| 31) L7 AR-1260-1            | 6.894  | 5.878  | 293859   | 262473   | 4.268  | 3.728    |
| 32) L7 AR-1260-2            | 7.167  | 6.117f | 340695   | 36814    | 4.388  | 0.412 #  |
| 33) L7 AR-1260-3            | 7.566  | 6.257  | 39110    | 62050    | 0.622  | 0.729    |
| 34) L7 AR-1260-4            | 7.812  | 6.772  | 1441436  | 4206     | 19.650 | 0.063 #  |
| 35) L7 AR-1260-5            | 8.150  | 7.018f | 161736   | 132696   | 1.155  | 0.849 #  |
| 36) L8 AR-1262-1            | 7.566  | 6.484  | 39110    | 50743    | 0.413  | 0.493    |
| 37) L8 AR-1262-2            | 8.150  | 6.772  | 161736   | 4206     | 1.005  | 0.046 #  |
| 38) L8 AR-1262-3            | 8.493  | 7.338  | 33337    | 35693    | 0.309  | 0.490 #  |
| 39) L8 AR-1262-4            | 8.584  | 7.411  | 68280    | 297328   | 1.335  | 2.212 #  |
| 40) L8 AR-1262-5            | 9.261  | 7.942  | 41362    | 655110   | 0.740  | 9.951 #  |
| 41) L9 AR-1268-1            | 8.493  | 7.338  | 33337    | 35693    | 0.173  | 0.165    |

Data Path : Z:\pestpcbsrv\HPCHEM1\ECD\_P\Data\PP032522\  
 Data File : PP045224.D  
 Signal(s) : Signal #1: ECD1A.ch Signal #2: ECD2B.ch  
 Acq On : 27 Mar 2022 06:23  
 Operator : YP\AJ  
 Sample : N2095-06  
 Misc :  
 ALS Vial : 42 Sample Multiplier: 1

Instrument :  
 ECD\_P  
 ClientSampleId :

Integration File signal 1: autoint1.e  
 Integration File signal 2: autoint2.e  
 Quant Time: Mar 28 01:06:17 2022  
 Quant Method : Z:\pestpcbsrv\HPCHEM1\ECD\_P\methods\PP031722.M  
 Quant Title : GC EXTRACTABLES  
 QLast Update : Thu Mar 17 04:32:40 2022  
 Response via : Initial Calibration  
 Integrator: ChemStation

Volume Inj. : 2 µl  
 Signal #1 Phase : ZB-MR1 Signal #2 Phase: ZB-MR2  
 Signal #1 Info : 30Mx0.32mmx 0.50µ Signal #2 Info : 30M x 0.32mm x 0.25µm

|     | Compound     | RT#1  | RT#2   | Resp#1 | Resp#2 | ng/ml | ng/ml   |
|-----|--------------|-------|--------|--------|--------|-------|---------|
| 42) | L9 AR-1268-2 | 8.592 | 7.411  | 92111  | 297328 | 0.528 | 1.520 # |
| 43) | L9 AR-1268-3 | 8.825 | 7.612f | 60278  | 63176  | 0.395 | 0.384   |
| 44) | L9 AR-1268-4 | 9.261 | 7.942  | 41362  | 655110 | 0.661 | 8.554 # |
| 45) | L9 AR-1268-5 | 9.688 | 8.242  | 210538 | 276830 | 0.437 | 0.537   |

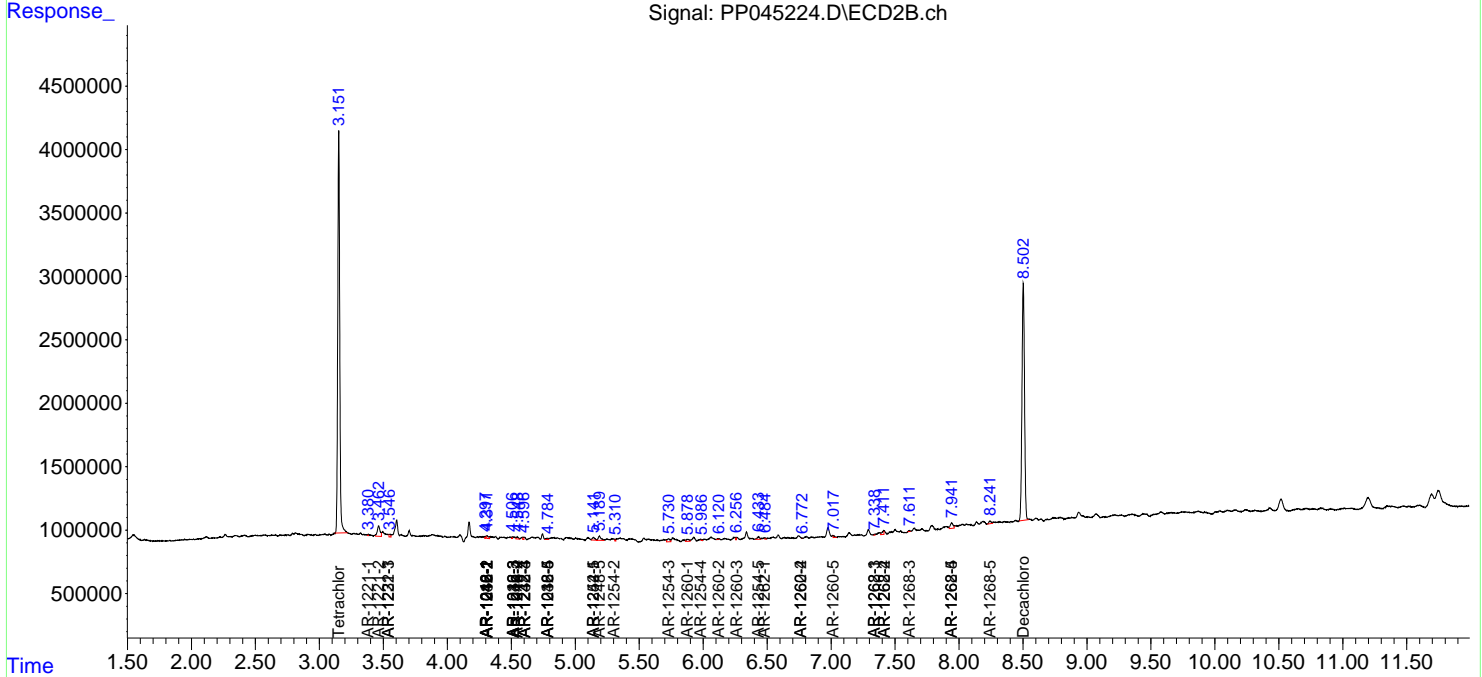
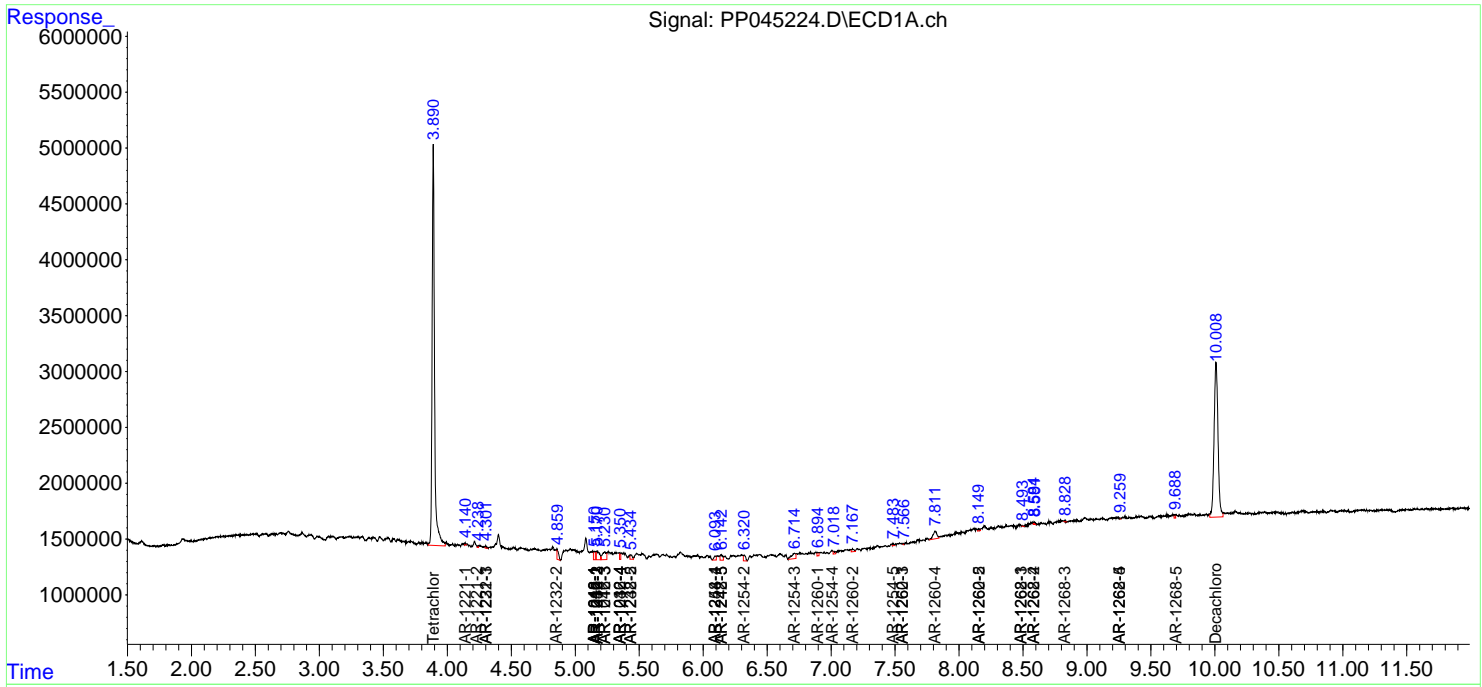
(f)=RT Delta > 1/2 Window (#)=Amounts differ by > 25% (m)=manual int.

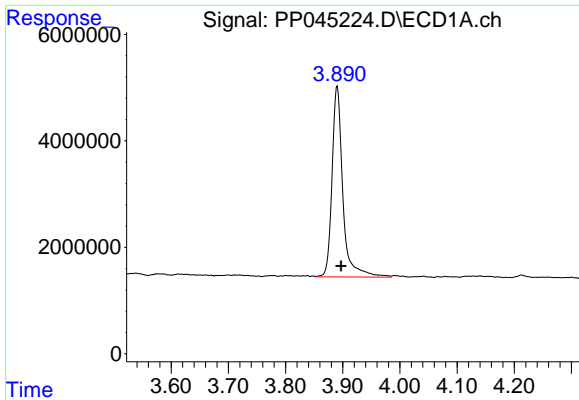
Data Path : Z:\pestpcbsrv\HPCHEM1\ECD\_P\Data\PP032522\  
 Data File : PP045224.D  
 Signal(s) : Signal #1: ECD1A.ch Signal #2: ECD2B.ch  
 Acq On : 27 Mar 2022 06:23  
 Operator : YP\AJ  
 Sample : N2095-06  
 Misc :  
 ALS Vial : 42 Sample Multiplier: 1

Instrument :  
 ECD\_P  
 ClientSampleId :

Integration File signal 1: autoint1.e  
 Integration File signal 2: autoint2.e  
 Quant Time: Mar 28 01:06:17 2022  
 Quant Method : Z:\pestpcbsrv\HPCHEM1\ECD\_P\methods\PP031722.M  
 Quant Title : GC EXTRACTABLES  
 QLast Update : Thu Mar 17 04:32:40 2022  
 Response via : Initial Calibration  
 Integrator: ChemStation

Volume Inj. : 2 µl  
 Signal #1 Phase : ZB-MR1 Signal #2 Phase: ZB-MR2  
 Signal #1 Info : 30Mx0.32mmx 0.50µ Signal #2 Info : 30M x 0.32mm x 0.25µm

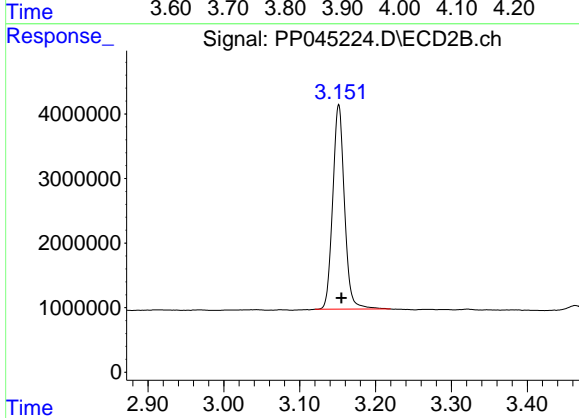




#1 Tetrachloro-m-xylene

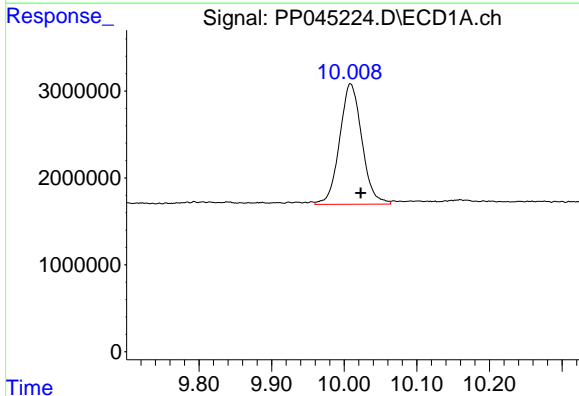
R.T.: 3.890 min  
 Delta R.T.: -0.007 min  
 Response: 47186725  
 Conc: 25.90 ng/ml

Instrument :  
 ECD\_P  
 ClientSampleId :



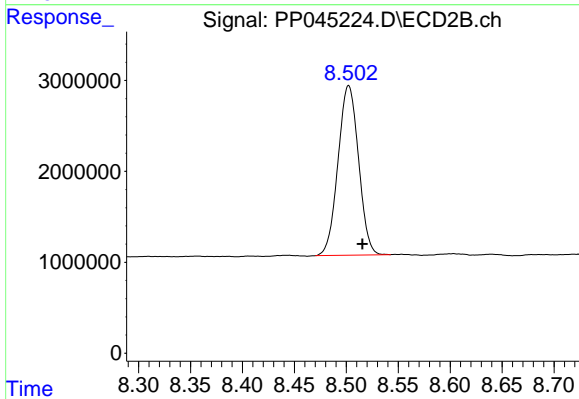
#1 Tetrachloro-m-xylene

R.T.: 3.151 min  
 Delta R.T.: -0.004 min  
 Response: 34154870  
 Conc: 25.92 ng/ml



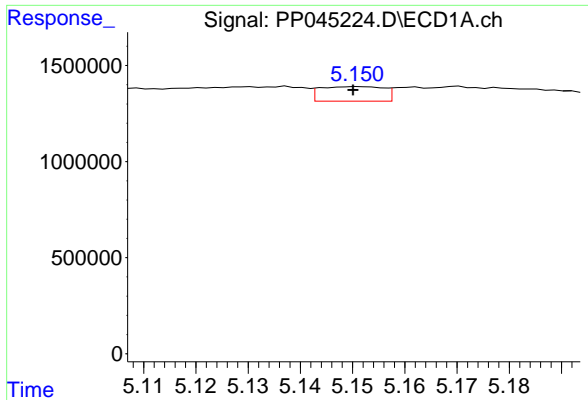
#2 Decachlorobiphenyl

R.T.: 10.009 min  
 Delta R.T.: -0.014 min  
 Response: 29579169  
 Conc: 22.98 ng/ml



#2 Decachlorobiphenyl

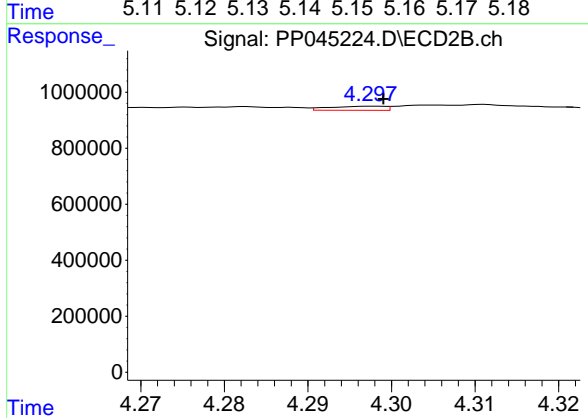
R.T.: 8.502 min  
 Delta R.T.: -0.013 min  
 Response: 25690544  
 Conc: 19.77 ng/ml



#3 AR-1016-1

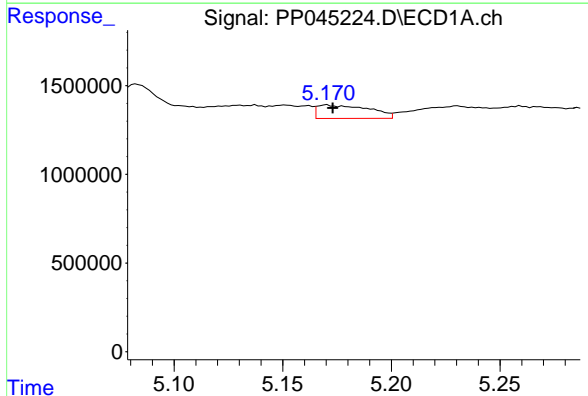
R.T.: 5.151 min  
 Delta R.T.: 0.001 min  
 Response: 638881  
 Conc: 10.89 ng/ml

Instrument :  
 ECD\_P  
 ClientSampleId :



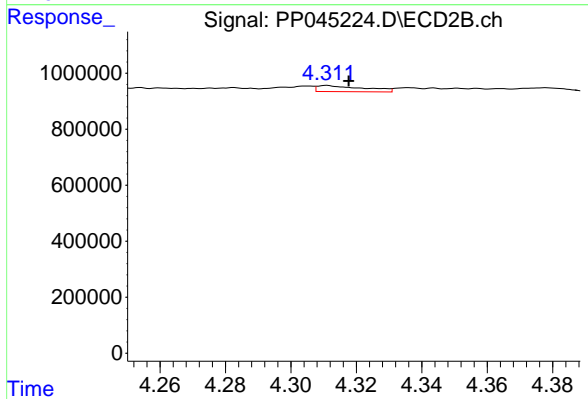
#3 AR-1016-1

R.T.: 4.298 min  
 Delta R.T.: -0.001 min  
 Response: 67884  
 Conc: 1.34 ng/ml



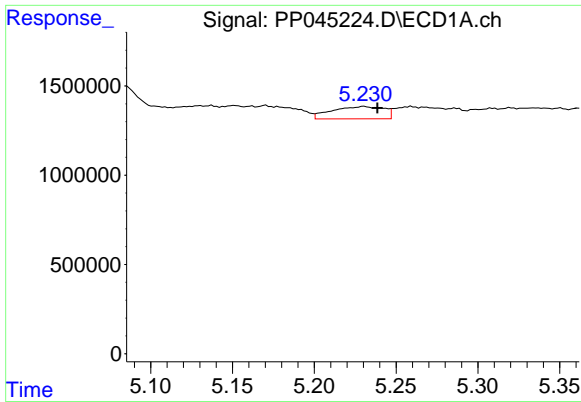
#4 AR-1016-2

R.T.: 5.170 min  
 Delta R.T.: -0.003 min  
 Response: 1257977  
 Conc: 14.07 ng/ml



#4 AR-1016-2

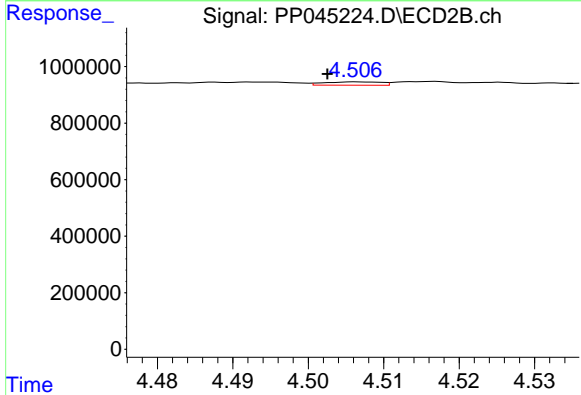
R.T.: 4.311 min  
 Delta R.T.: -0.007 min  
 Response: 218175  
 Conc: 3.03 ng/ml



#5 AR-1016-3

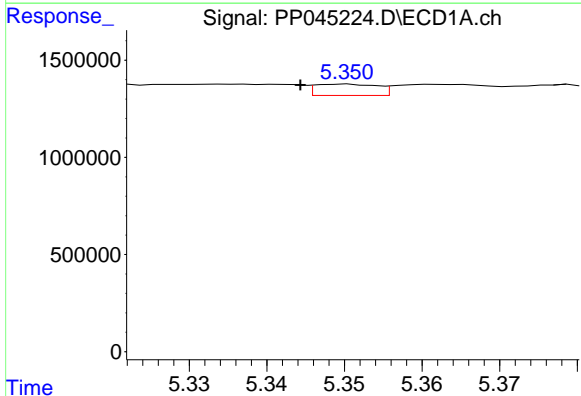
R.T.: 5.230 min  
 Delta R.T.: -0.008 min  
 Response: 1522693  
 Conc: 29.26 ng/ml

Instrument :  
 ECD\_P  
 ClientSampleId :



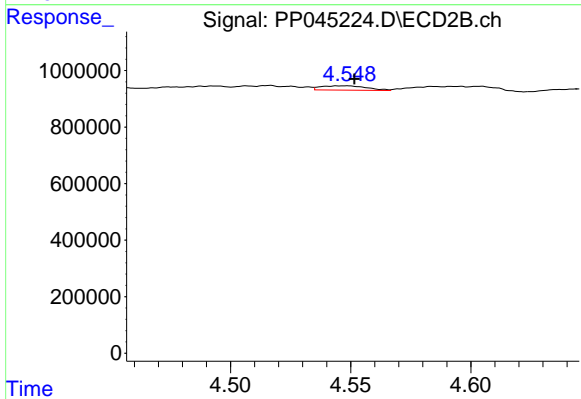
#5 AR-1016-3

R.T.: 4.507 min  
 Delta R.T.: 0.004 min  
 Response: 61609  
 Conc: 1.57 ng/ml



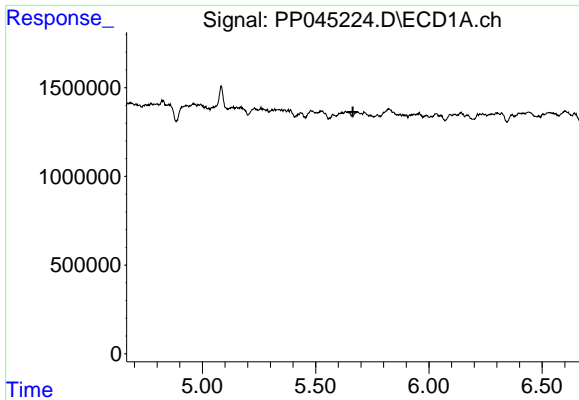
#6 AR-1016-4

R.T.: 5.350 min  
 Delta R.T.: 0.006 min  
 Response: 326934  
 Conc: 7.64 ng/ml



#6 AR-1016-4

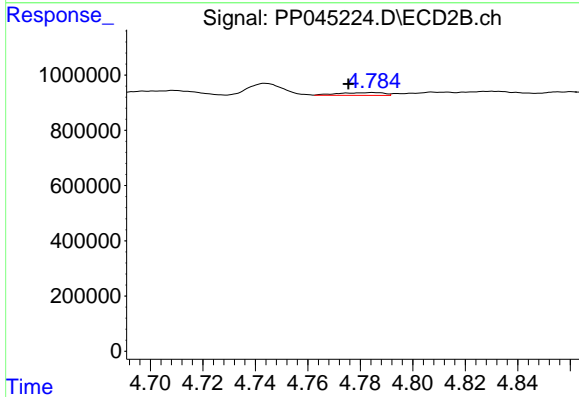
R.T.: 4.544 min  
 Delta R.T.: -0.007 min  
 Response: 198438  
 Conc: 6.30 ng/ml



#7 AR-1016-5

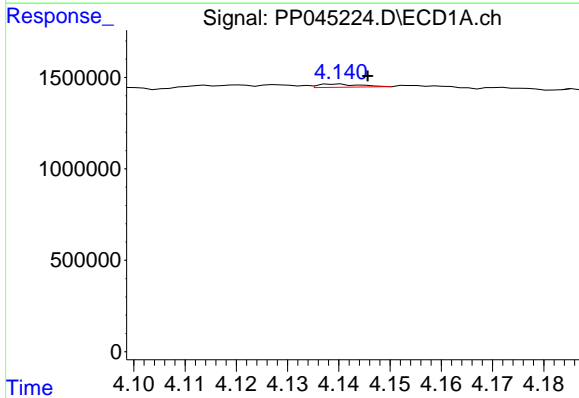
R.T.: 5.685 min  
 Delta R.T.: 0.021 min  
 Response: -3427  
 Conc: N.D.

Instrument :  
 ECD\_P  
 ClientSampleId :



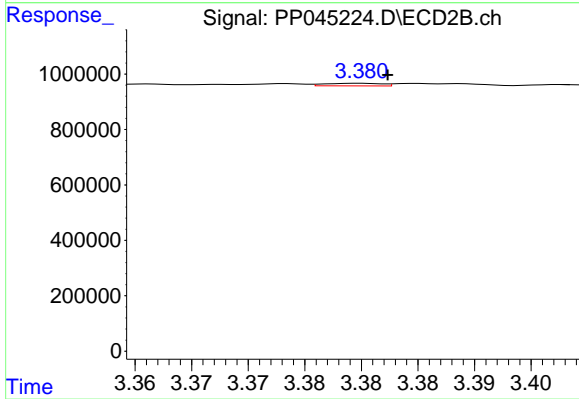
#7 AR-1016-5

R.T.: 4.785 min  
 Delta R.T.: 0.009 min  
 Response: 124571  
 Conc: 3.12 ng/ml



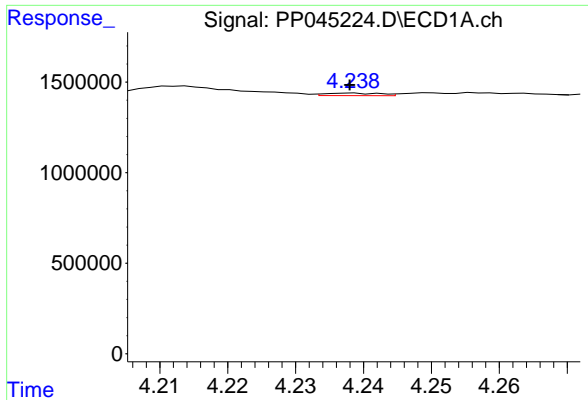
#8 AR-1221-1

R.T.: 4.140 min  
 Delta R.T.: -0.006 min  
 Response: 97897  
 Conc: 4.77 ng/ml



#8 AR-1221-1

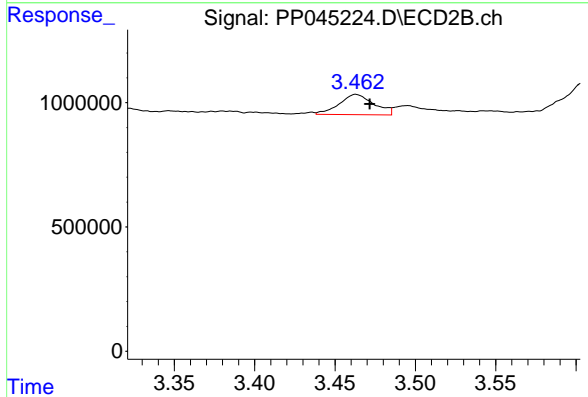
R.T.: 3.380 min  
 Delta R.T.: -0.002 min  
 Response: 33002  
 Conc: 2.22 ng/ml



#9 AR-1221-2

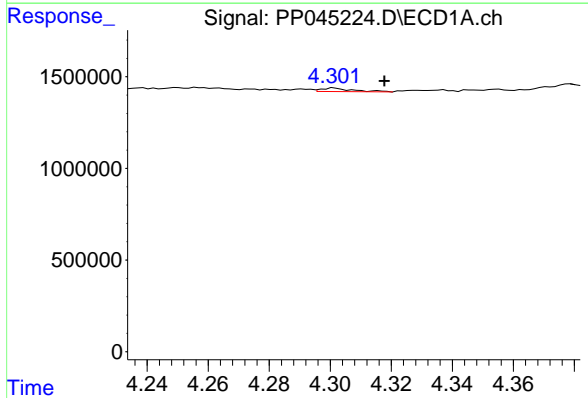
R.T.: 4.238 min  
 Delta R.T.: 0.000 min  
 Response: 78119  
 Conc: 5.11 ng/ml

Instrument :  
 ECD\_P  
 ClientSampleId :



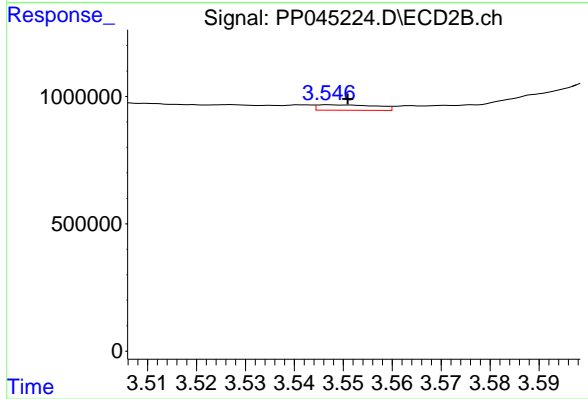
#9 AR-1221-2

R.T.: 3.463 min  
 Delta R.T.: -0.009 min  
 Response: 1227917  
 Conc: 99.11 ng/ml



#10 AR-1221-3

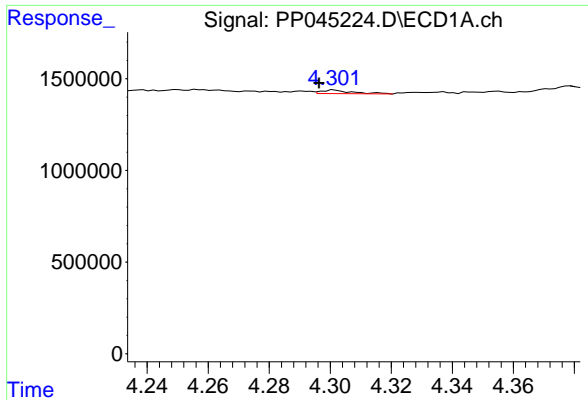
R.T.: 4.301 min  
 Delta R.T.: -0.016 min  
 Response: 133889  
 Conc: 2.77 ng/ml



#10 AR-1221-3

R.T.: 3.547 min  
 Delta R.T.: -0.004 min  
 Response: 178200  
 Conc: 4.59 ng/ml

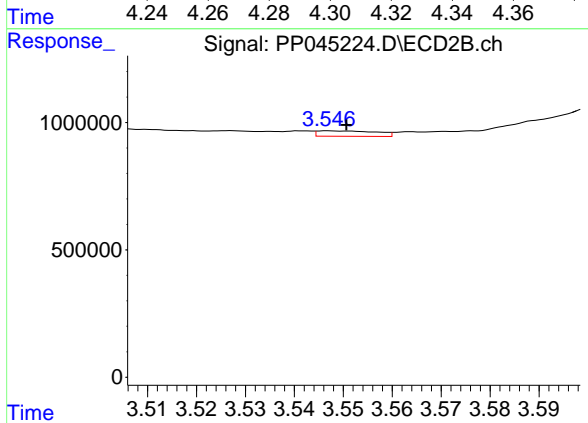




#11 AR-1232-1

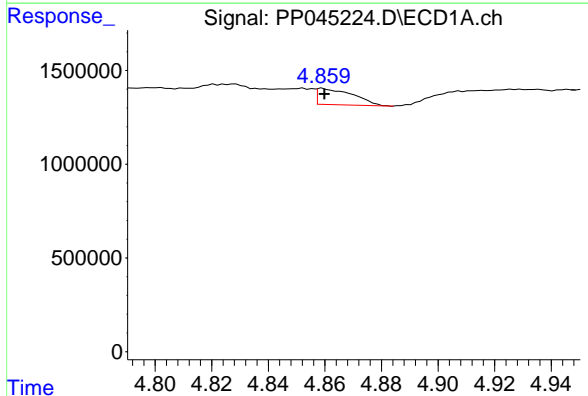
R.T.: 4.301 min  
 Delta R.T.: 0.005 min  
 Response: 133889  
 Conc: 2.98 ng/ml

Instrument :  
 ECD\_P  
 ClientSampleId :



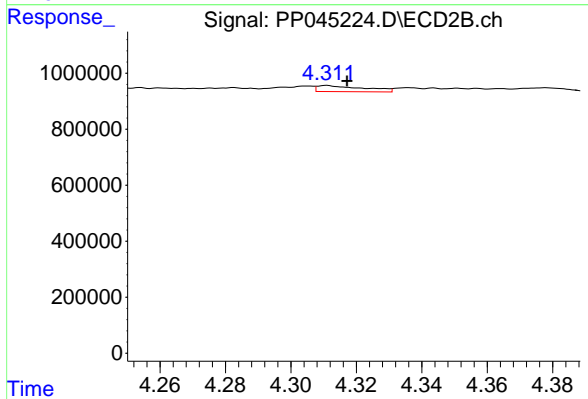
#11 AR-1232-1

R.T.: 3.547 min  
 Delta R.T.: -0.004 min  
 Response: 178200  
 Conc: 4.96 ng/ml



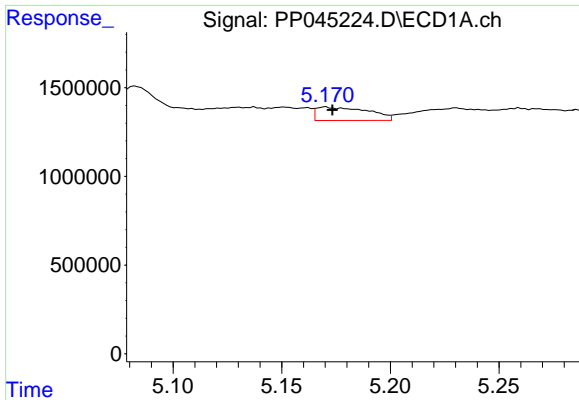
#12 AR-1232-2

R.T.: 4.859 min  
 Delta R.T.: -0.001 min  
 Response: 766738  
 Conc: 36.49 ng/ml



#12 AR-1232-2

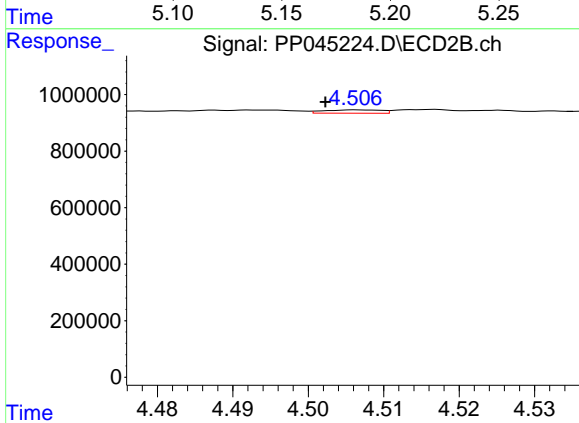
R.T.: 4.311 min  
 Delta R.T.: -0.006 min  
 Response: 218175  
 Conc: 6.31 ng/ml



#13 AR-1232-3

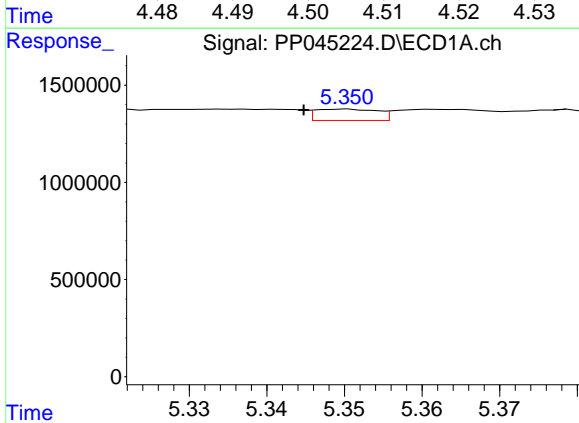
R.T.: 5.170 min  
 Delta R.T.: -0.003 min  
 Response: 1257977  
 Conc: 30.15 ng/ml

Instrument :  
 ECD\_P  
 ClientSampleId :



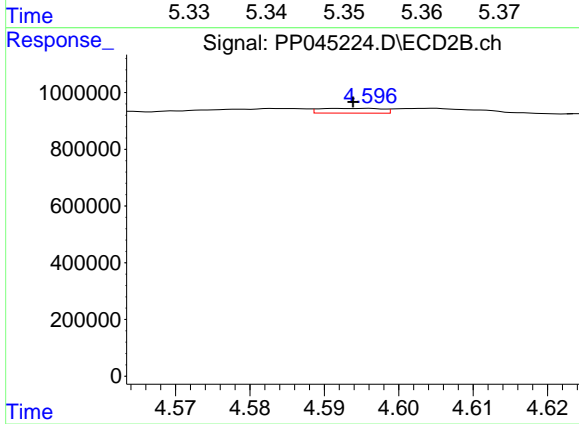
#13 AR-1232-3

R.T.: 4.507 min  
 Delta R.T.: 0.004 min  
 Response: 61609  
 Conc: 3.29 ng/ml



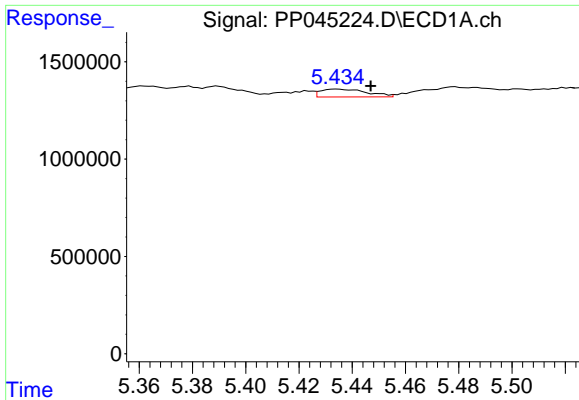
#14 AR-1232-4

R.T.: 5.350 min  
 Delta R.T.: 0.005 min  
 Response: 326934  
 Conc: 16.35 ng/ml



#14 AR-1232-4

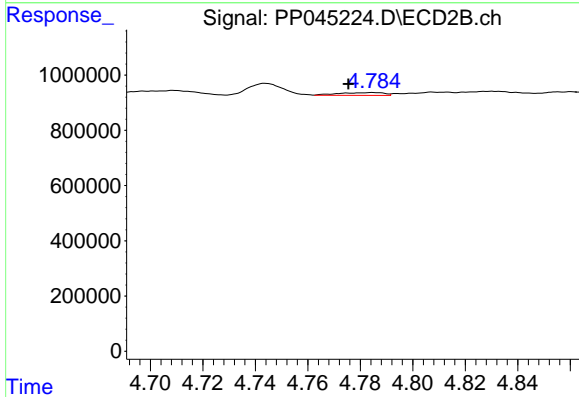
R.T.: 4.596 min  
 Delta R.T.: 0.002 min  
 Response: 98155  
 Conc: 5.93 ng/ml



#15 AR-1232-5

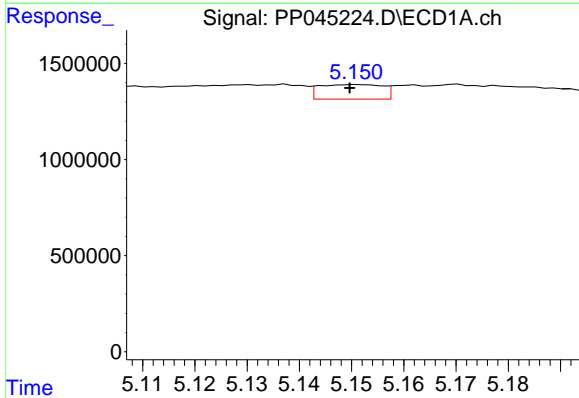
R.T.: 5.434 min  
 Delta R.T.: -0.013 min  
 Response: 486364  
 Conc: 34.42 ng/ml

Instrument :  
 ECD\_P  
 ClientSampleId :



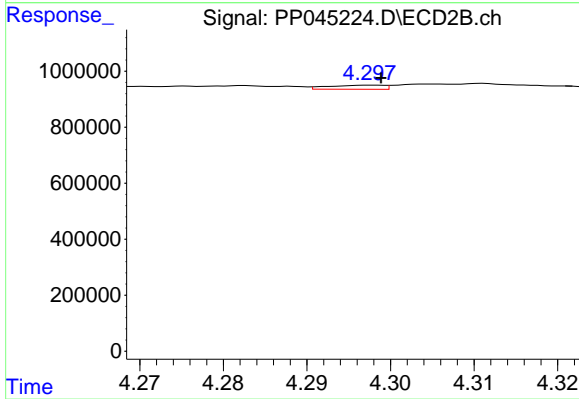
#15 AR-1232-5

R.T.: 4.785 min  
 Delta R.T.: 0.009 min  
 Response: 124571  
 Conc: 6.74 ng/ml



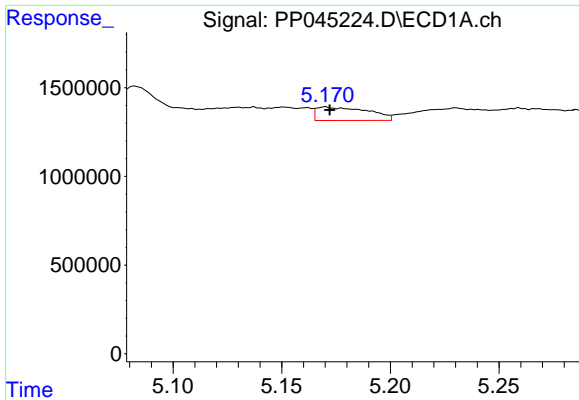
#16 AR-1242-1

R.T.: 5.151 min  
 Delta R.T.: 0.001 min  
 Response: 638881  
 Conc: 13.92 ng/ml



#16 AR-1242-1

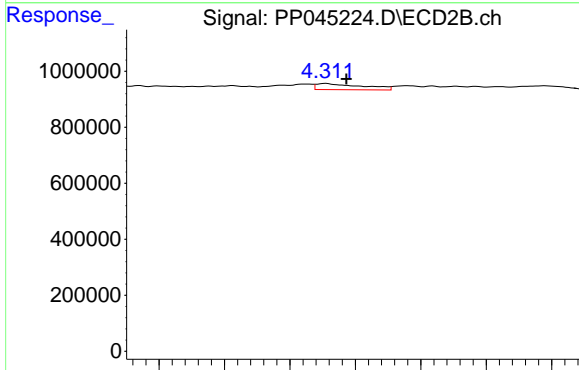
R.T.: 4.298 min  
 Delta R.T.: 0.000 min  
 Response: 67884  
 Conc: 1.70 ng/ml



#17 AR-1242-2

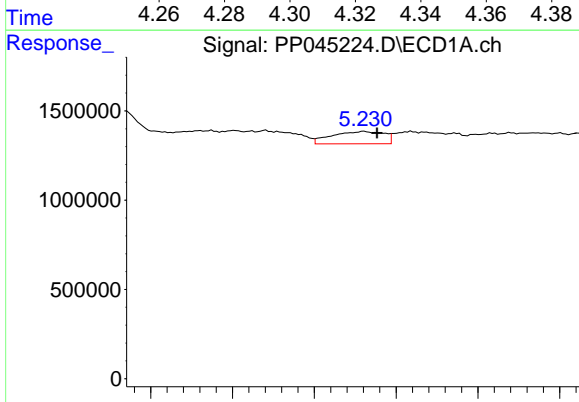
R.T.: 5.170 min  
 Delta R.T.: -0.002 min  
 Response: 1257977  
 Conc: 17.96 ng/ml

Instrument :  
 ECD\_P  
 ClientSampleId :



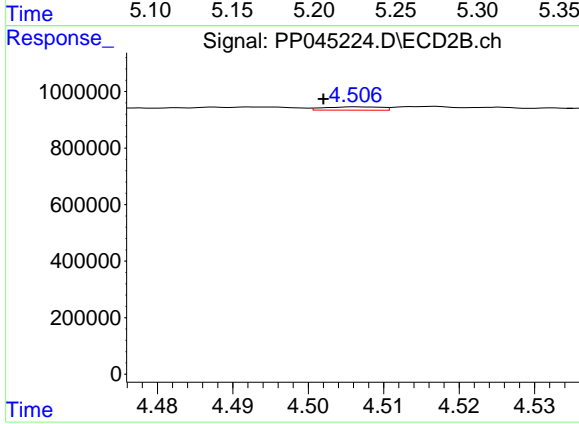
#17 AR-1242-2

R.T.: 4.311 min  
 Delta R.T.: -0.006 min  
 Response: 218175  
 Conc: 3.84 ng/ml



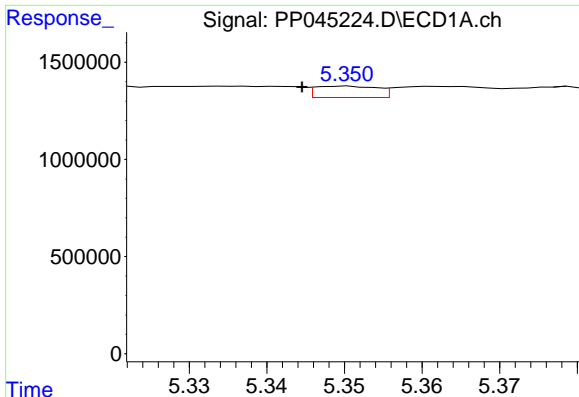
#18 AR-1242-3

R.T.: 5.230 min  
 Delta R.T.: -0.008 min  
 Response: 1522693  
 Conc: 37.07 ng/ml



#18 AR-1242-3

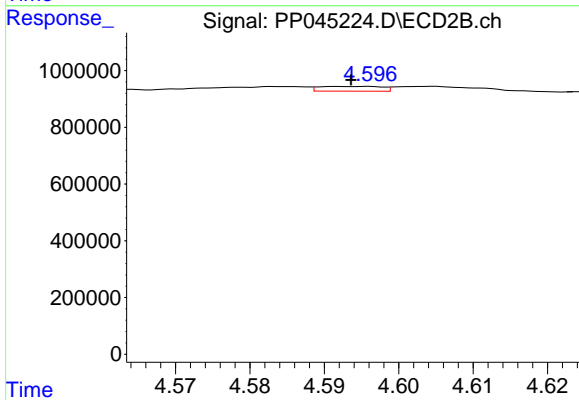
R.T.: 4.507 min  
 Delta R.T.: 0.004 min  
 Response: 61609  
 Conc: 1.98 ng/ml



#19 AR-1242-4

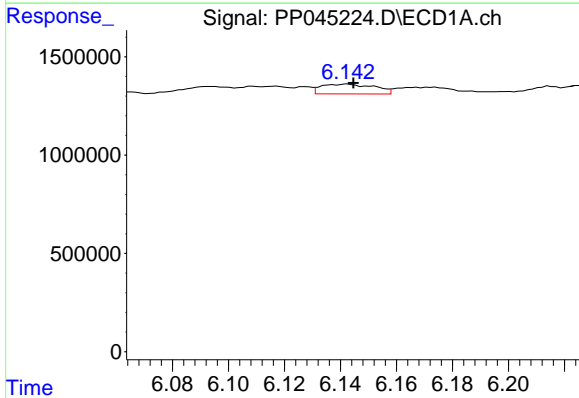
R.T.: 5.350 min  
 Delta R.T.: 0.006 min  
 Response: 326934  
 Conc: 9.50 ng/ml

Instrument :  
 ECD\_P  
 ClientSampleId :



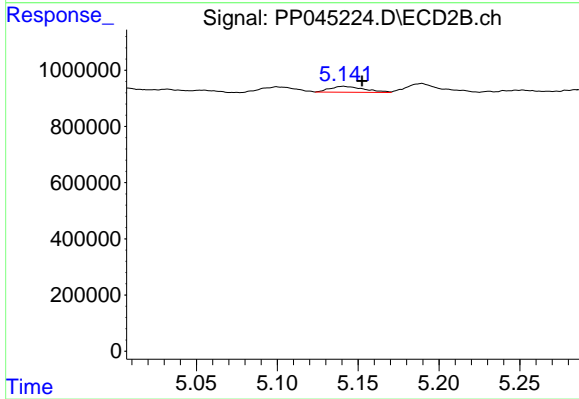
#19 AR-1242-4

R.T.: 4.596 min  
 Delta R.T.: 0.002 min  
 Response: 98155  
 Conc: 3.24 ng/ml



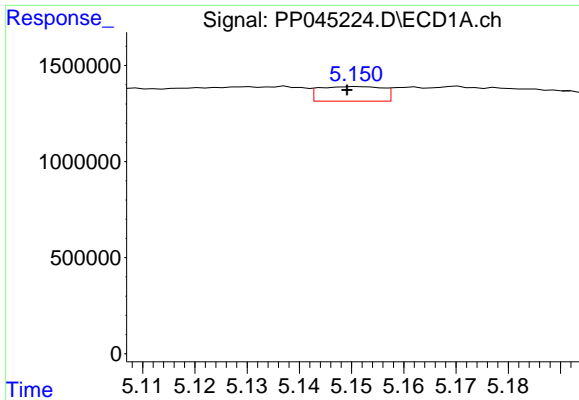
#20 AR-1242-5

R.T.: 6.142 min  
 Delta R.T.: -0.002 min  
 Response: 663694  
 Conc: 18.15 ng/ml



#20 AR-1242-5

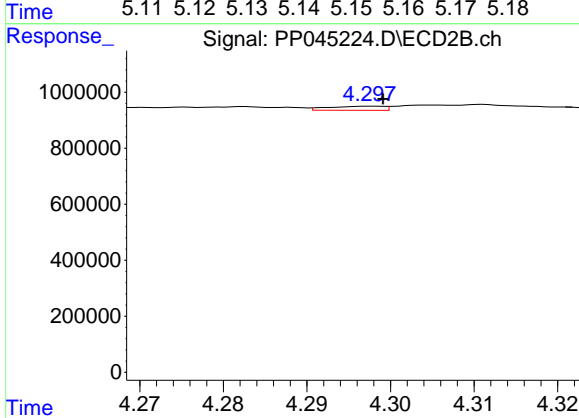
R.T.: 5.141 min  
 Delta R.T.: -0.011 min  
 Response: 307986  
 Conc: 7.74 ng/ml



#21 AR-1248-1

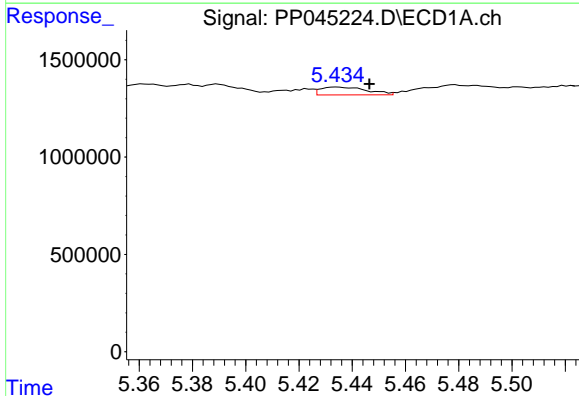
R.T.: 5.151 min  
 Delta R.T.: 0.002 min  
 Response: 638881  
 Conc: 18.16 ng/ml

Instrument :  
 ECD\_P  
 ClientSampleId :



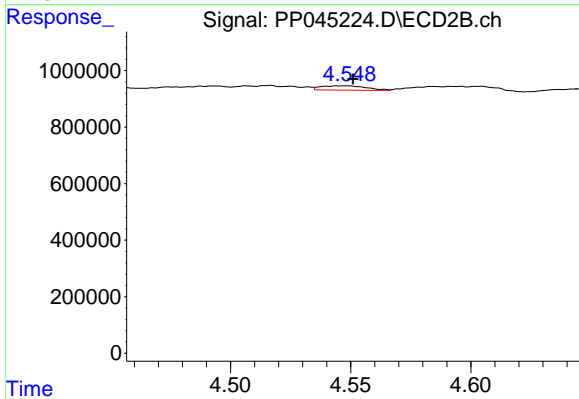
#21 AR-1248-1

R.T.: 4.298 min  
 Delta R.T.: -0.001 min  
 Response: 67884  
 Conc: 2.15 ng/ml



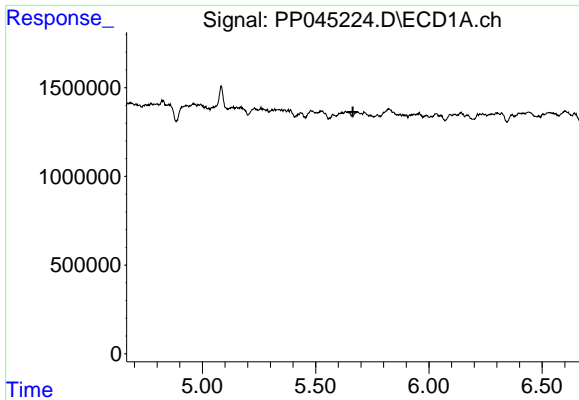
#22 AR-1248-2

R.T.: 5.434 min  
 Delta R.T.: -0.012 min  
 Response: 486364  
 Conc: 10.28 ng/ml



#22 AR-1248-2

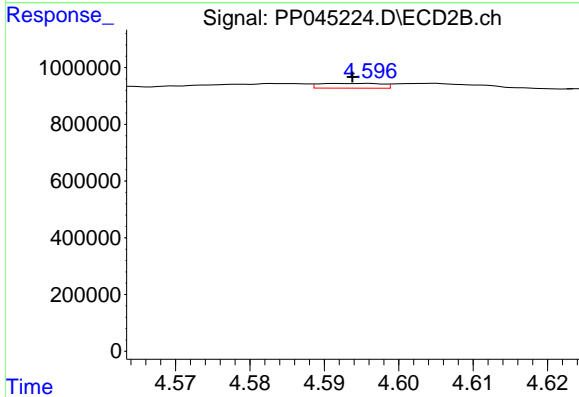
R.T.: 4.544 min  
 Delta R.T.: -0.007 min  
 Response: 198438  
 Conc: 4.54 ng/ml



#23 AR-1248-3

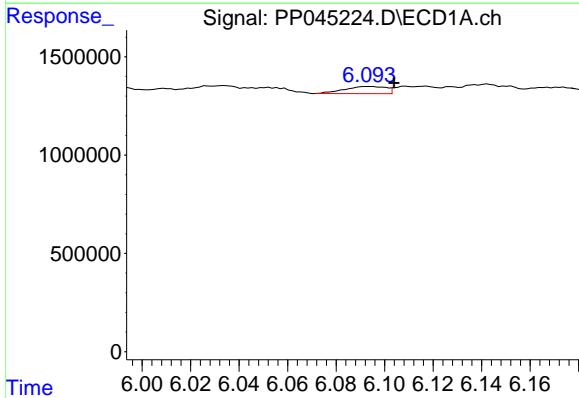
R.T.: 5.685 min  
 Delta R.T.: 0.021 min  
 Response: -3427  
 Conc: N.D.

Instrument :  
 ECD\_P  
 ClientSampleId :



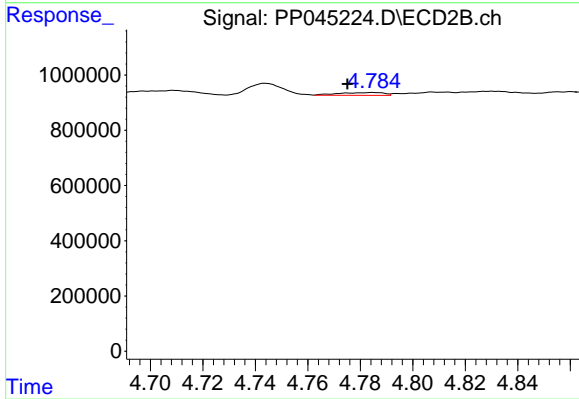
#23 AR-1248-3

R.T.: 4.596 min  
 Delta R.T.: 0.002 min  
 Response: 98155  
 Conc: 2.15 ng/ml



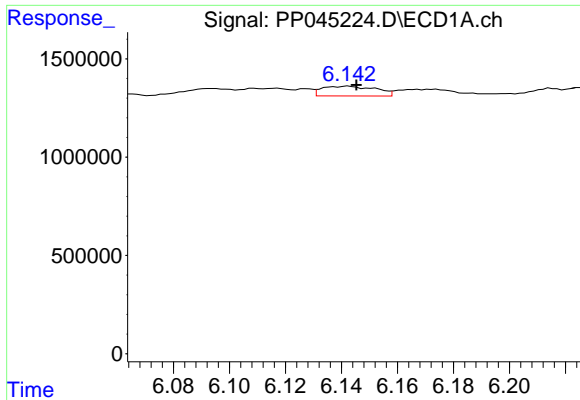
#24 AR-1248-4

R.T.: 6.094 min  
 Delta R.T.: -0.010 min  
 Response: 432345  
 Conc: 6.81 ng/ml



#24 AR-1248-4

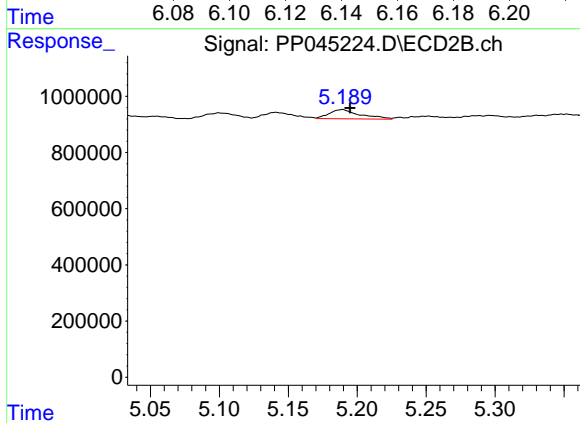
R.T.: 4.785 min  
 Delta R.T.: 0.010 min  
 Response: 124571  
 Conc: 2.31 ng/ml



#25 AR-1248-5

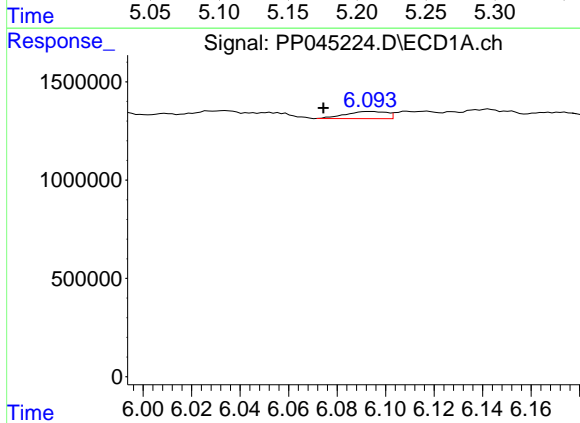
R.T.: 6.142 min  
 Delta R.T.: -0.003 min  
 Response: 663694  
 Conc: 10.64 ng/ml

Instrument :  
 ECD\_P  
 ClientSampleId :



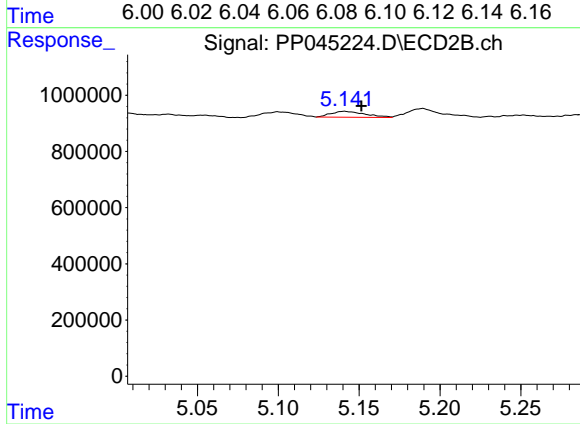
#25 AR-1248-5

R.T.: 5.189 min  
 Delta R.T.: -0.005 min  
 Response: 516573  
 Conc: 9.20 ng/ml



#26 AR-1254-1

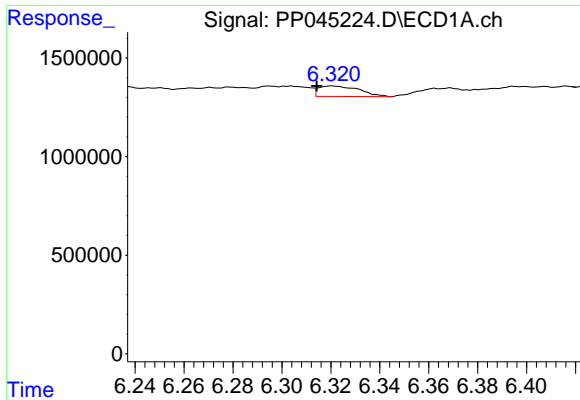
R.T.: 6.094 min  
 Delta R.T.: 0.019 min  
 Response: 432345  
 Conc: 6.51 ng/ml



#26 AR-1254-1

R.T.: 5.141 min  
 Delta R.T.: -0.010 min  
 Response: 307986  
 Conc: 3.56 ng/ml

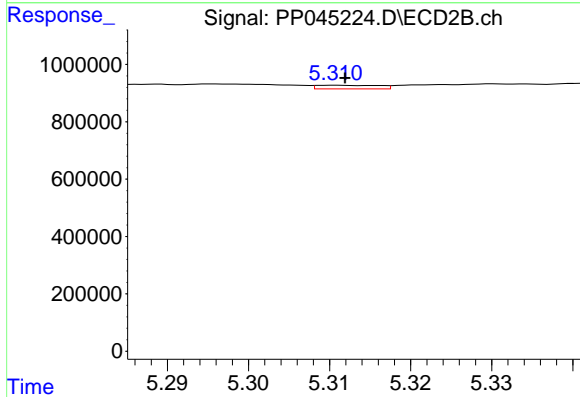




#27 AR-1254-2

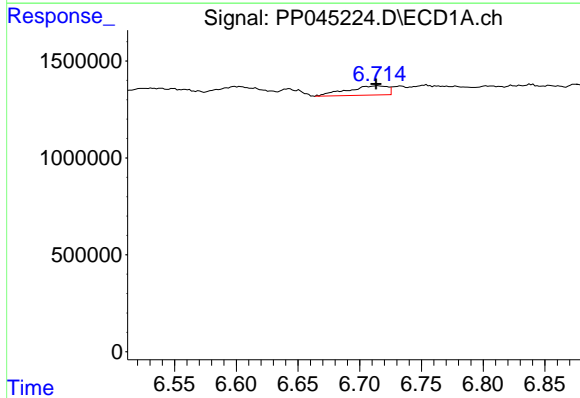
R.T.: 6.321 min  
 Delta R.T.: 0.007 min  
 Response: 618039  
 Conc: 6.19 ng/ml

Instrument :  
 ECD\_P  
 ClientSampleId :



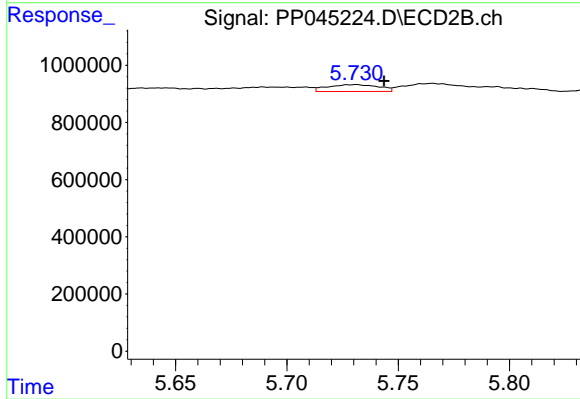
#27 AR-1254-2

R.T.: 5.311 min  
 Delta R.T.: -0.001 min  
 Response: 67734  
 Conc: 0.91 ng/ml



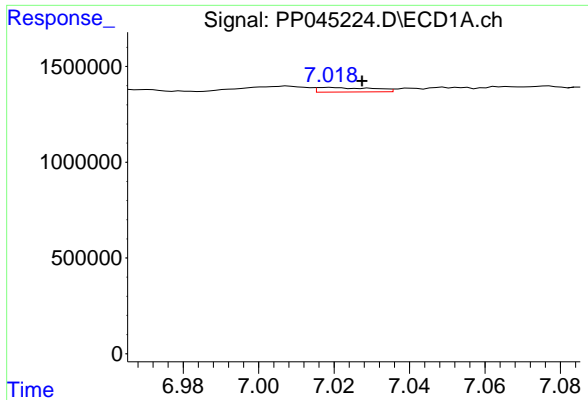
#28 AR-1254-3

R.T.: 6.715 min  
 Delta R.T.: 0.001 min  
 Response: 1082884  
 Conc: 10.59 ng/ml



#28 AR-1254-3

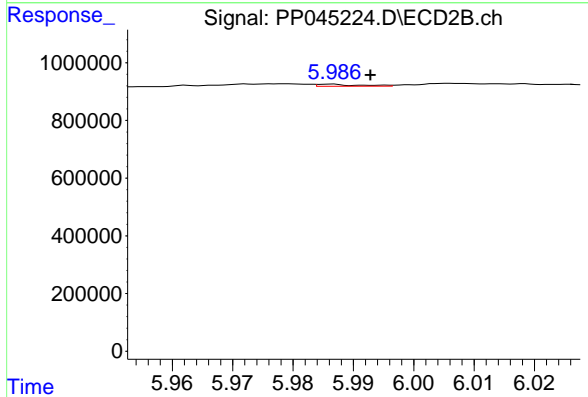
R.T.: 5.731 min  
 Delta R.T.: -0.012 min  
 Response: 385714  
 Conc: 3.36 ng/ml



#29 AR-1254-4

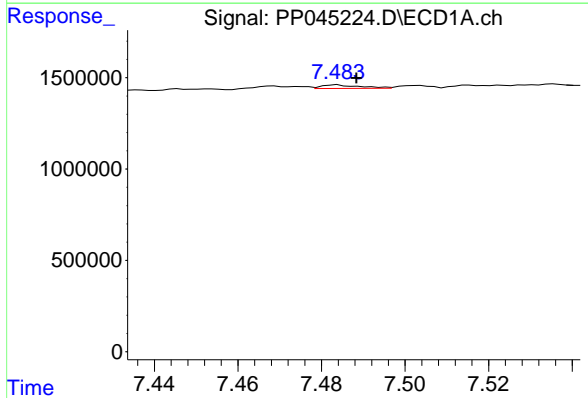
R.T.: 7.019 min  
 Delta R.T.: -0.009 min  
 Response: 244036  
 Conc: 3.36 ng/ml

Instrument :  
 ECD\_P  
 ClientSampleId :



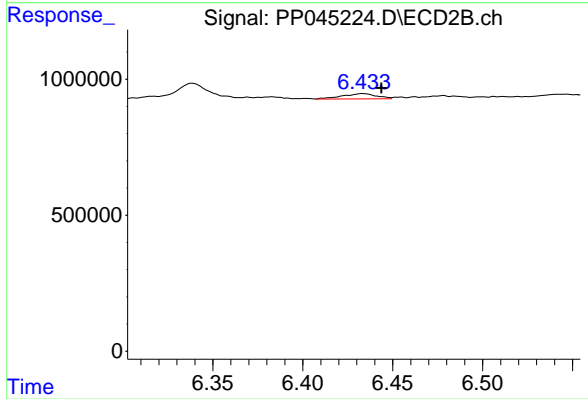
#29 AR-1254-4

R.T.: 5.986 min  
 Delta R.T.: -0.006 min  
 Response: 33617  
 Conc: 0.45 ng/ml



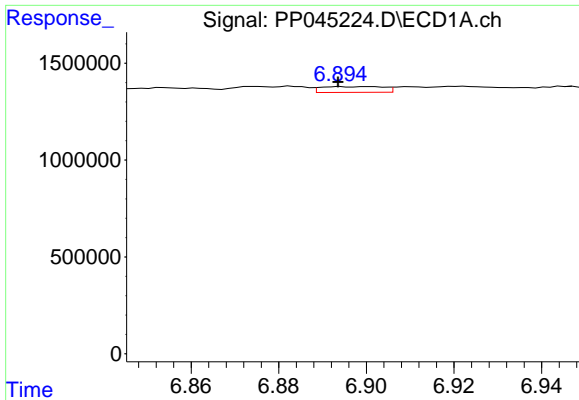
#30 AR-1254-5

R.T.: 7.484 min  
 Delta R.T.: -0.005 min  
 Response: 130698  
 Conc: 1.69 ng/ml



#30 AR-1254-5

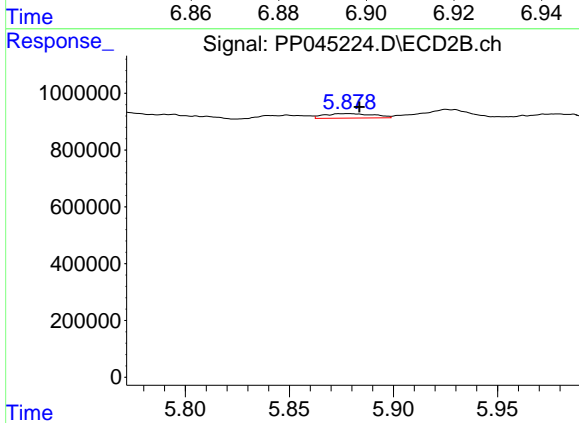
R.T.: 6.433 min  
 Delta R.T.: -0.011 min  
 Response: 256022  
 Conc: 2.49 ng/ml



#31 AR-1260-1

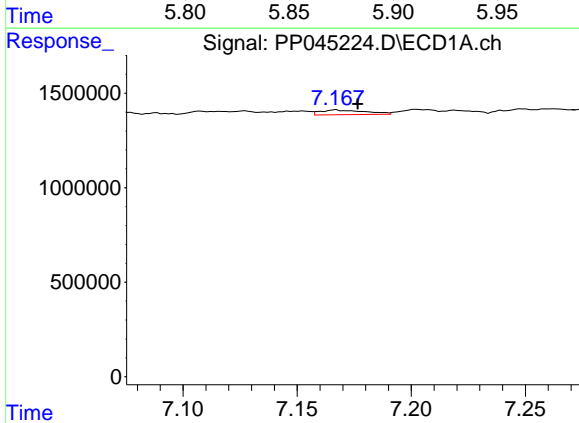
R.T.: 6.894 min  
 Delta R.T.: 0.000 min  
 Response: 293859  
 Conc: 4.27 ng/ml

Instrument :  
 ECD\_P  
 ClientSampleId :



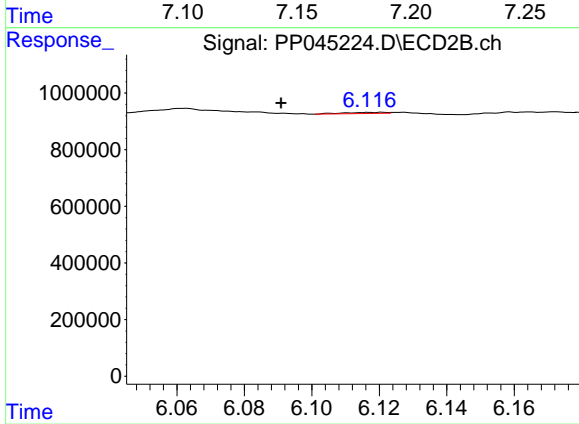
#31 AR-1260-1

R.T.: 5.878 min  
 Delta R.T.: -0.005 min  
 Response: 262473  
 Conc: 3.73 ng/ml



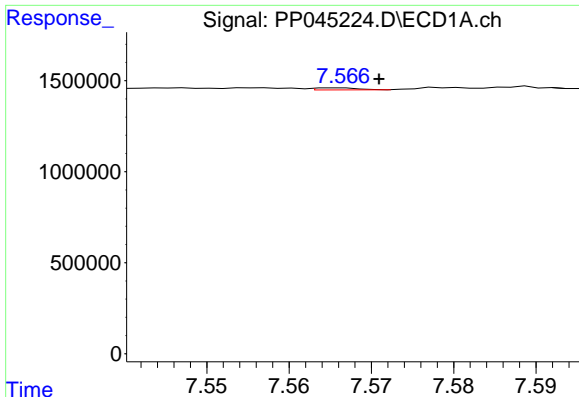
#32 AR-1260-2

R.T.: 7.167 min  
 Delta R.T.: -0.010 min  
 Response: 340695  
 Conc: 4.39 ng/ml



#32 AR-1260-2

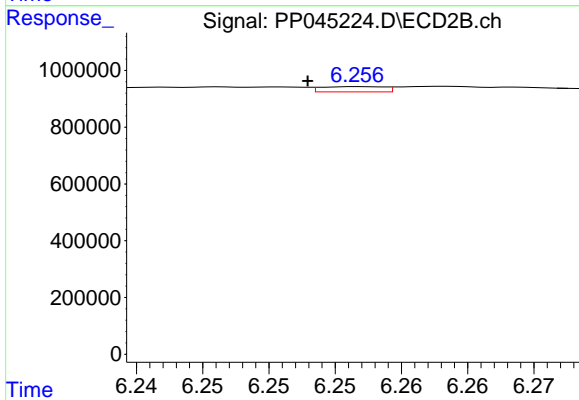
R.T.: 6.117 min  
 Delta R.T.: 0.026 min  
 Response: 36814  
 Conc: 0.41 ng/ml



#33 AR-1260-3

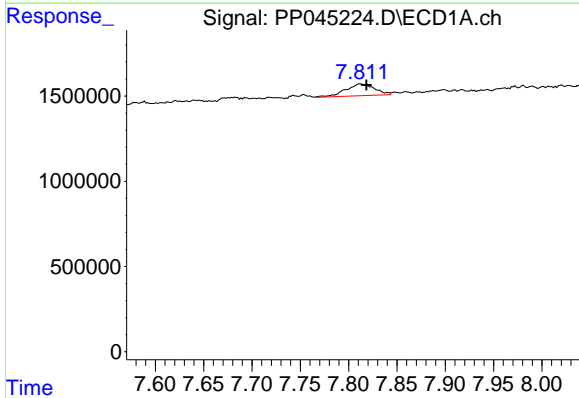
R.T.: 7.566 min  
 Delta R.T.: -0.005 min  
 Response: 39110  
 Conc: 0.62 ng/ml

Instrument :  
 ECD\_P  
 ClientSampleId :



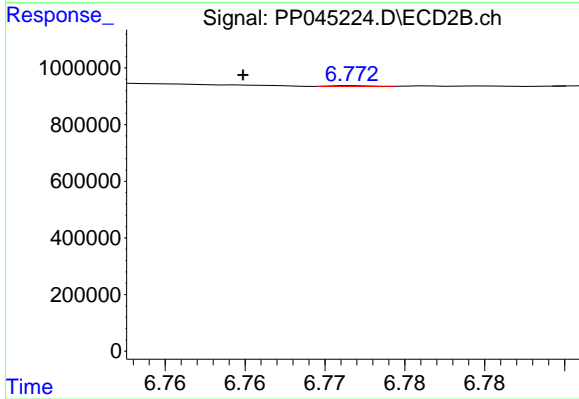
#33 AR-1260-3

R.T.: 6.257 min  
 Delta R.T.: 0.004 min  
 Response: 62050  
 Conc: 0.73 ng/ml



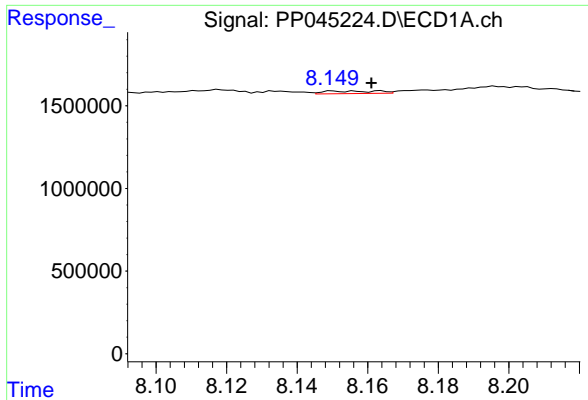
#34 AR-1260-4

R.T.: 7.812 min  
 Delta R.T.: -0.006 min  
 Response: 1441436  
 Conc: 19.65 ng/ml



#34 AR-1260-4

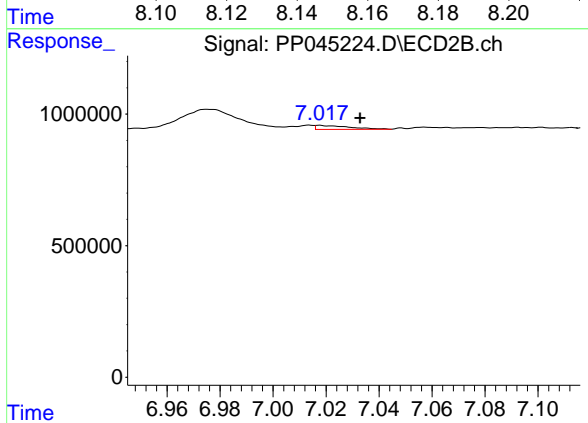
R.T.: 6.772 min  
 Delta R.T.: 0.007 min  
 Response: 4206  
 Conc: 0.06 ng/ml



#35 AR-1260-5

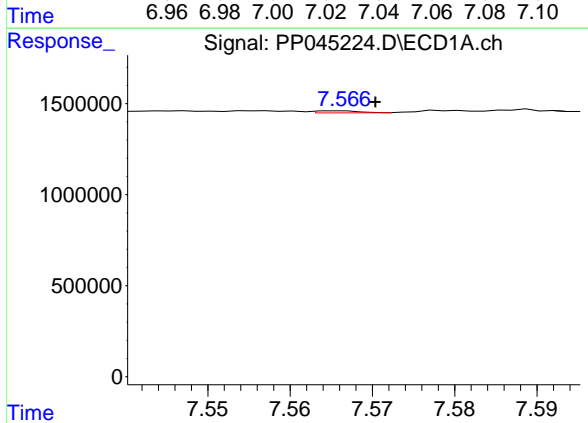
R.T.: 8.150 min  
 Delta R.T.: -0.011 min  
 Response: 161736  
 Conc: 1.15 ng/ml

Instrument :  
 ECD\_P  
 ClientSampleId :



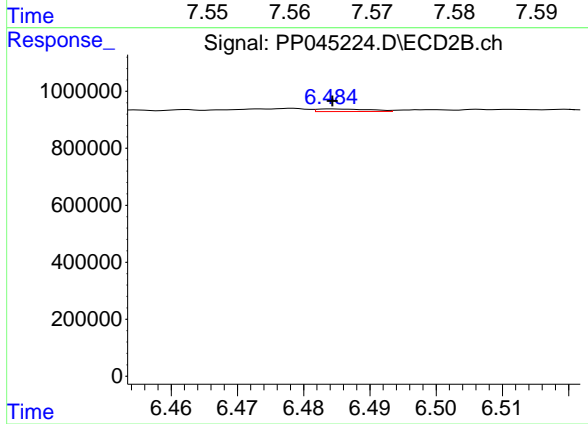
#35 AR-1260-5

R.T.: 7.018 min  
 Delta R.T.: -0.015 min  
 Response: 132696  
 Conc: 0.85 ng/ml



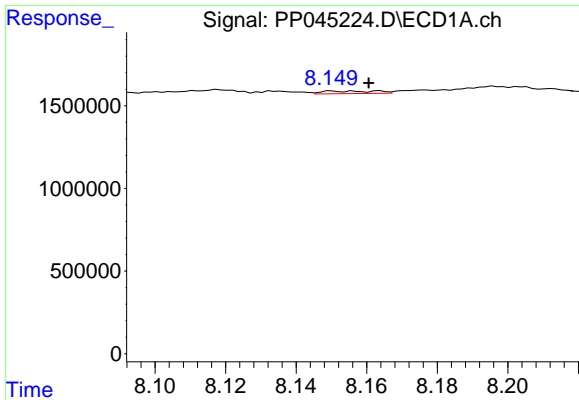
#36 AR-1262-1

R.T.: 7.566 min  
 Delta R.T.: -0.005 min  
 Response: 39110  
 Conc: 0.41 ng/ml



#36 AR-1262-1

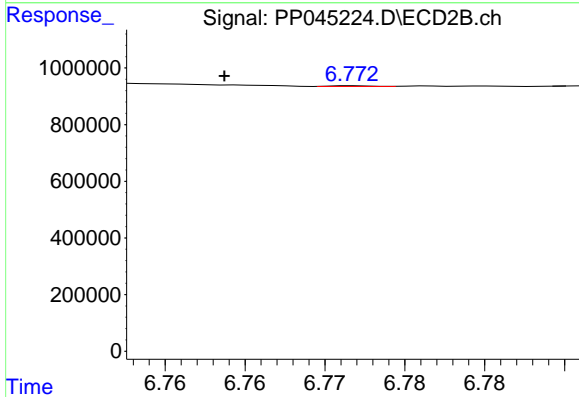
R.T.: 6.484 min  
 Delta R.T.: 0.000 min  
 Response: 50743  
 Conc: 0.49 ng/ml



#37 AR-1262-2

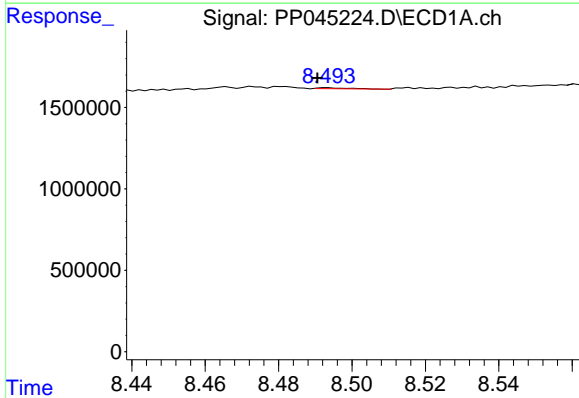
R.T.: 8.150 min  
 Delta R.T.: -0.010 min  
 Response: 161736  
 Conc: 1.01 ng/ml

Instrument :  
 ECD\_P  
 ClientSampleId :



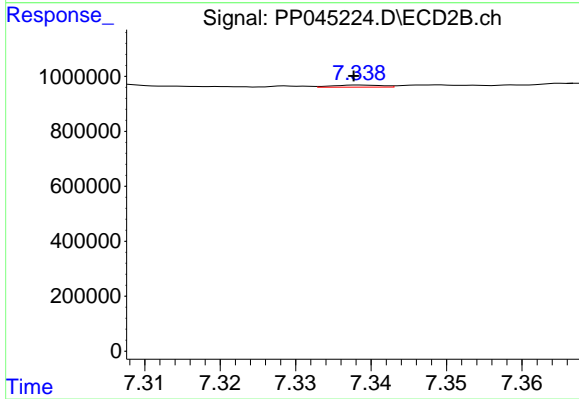
#37 AR-1262-2

R.T.: 6.772 min  
 Delta R.T.: 0.008 min  
 Response: 4206  
 Conc: 0.05 ng/ml



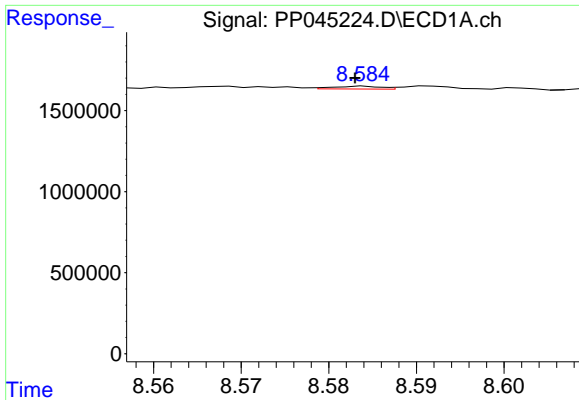
#38 AR-1262-3

R.T.: 8.493 min  
 Delta R.T.: 0.003 min  
 Response: 33337  
 Conc: 0.31 ng/ml



#38 AR-1262-3

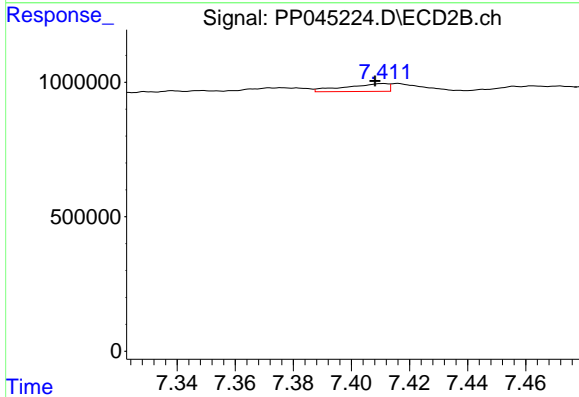
R.T.: 7.338 min  
 Delta R.T.: 0.000 min  
 Response: 35693  
 Conc: 0.49 ng/ml



#39 AR-1262-4

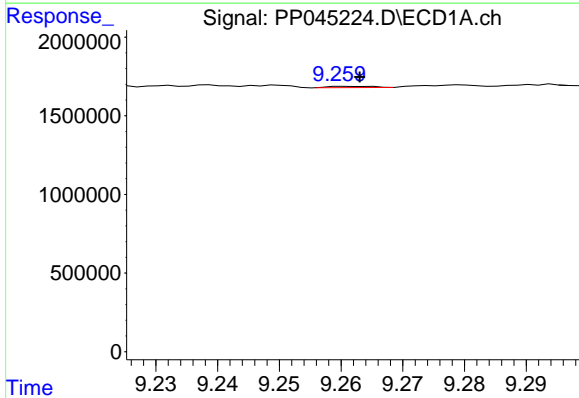
R.T.: 8.584 min  
 Delta R.T.: 0.001 min  
 Response: 68280  
 Conc: 1.33 ng/ml

Instrument :  
 ECD\_P  
 ClientSampleId :



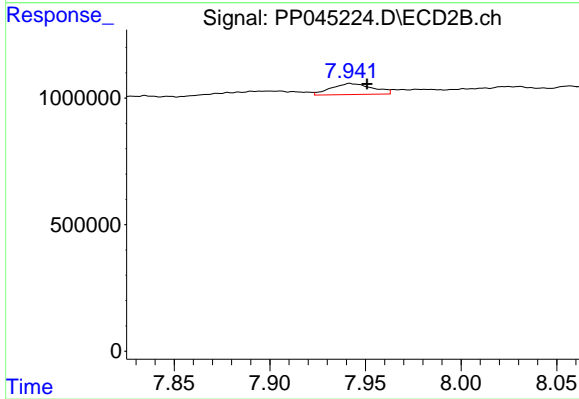
#39 AR-1262-4

R.T.: 7.411 min  
 Delta R.T.: 0.003 min  
 Response: 297328  
 Conc: 2.21 ng/ml



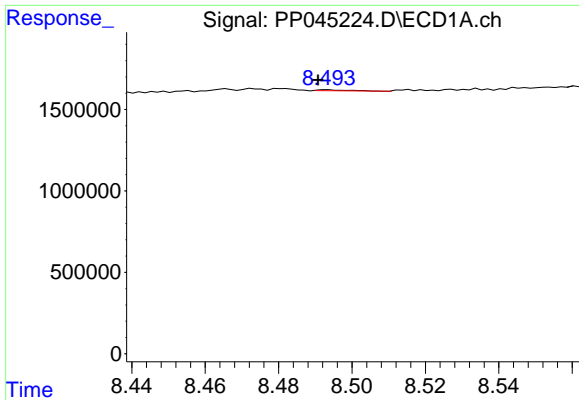
#40 AR-1262-5

R.T.: 9.261 min  
 Delta R.T.: -0.002 min  
 Response: 41362  
 Conc: 0.74 ng/ml



#40 AR-1262-5

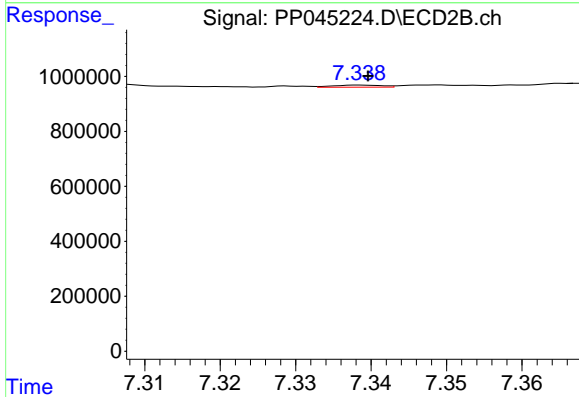
R.T.: 7.942 min  
 Delta R.T.: -0.009 min  
 Response: 655110  
 Conc: 9.95 ng/ml



#41 AR-1268-1

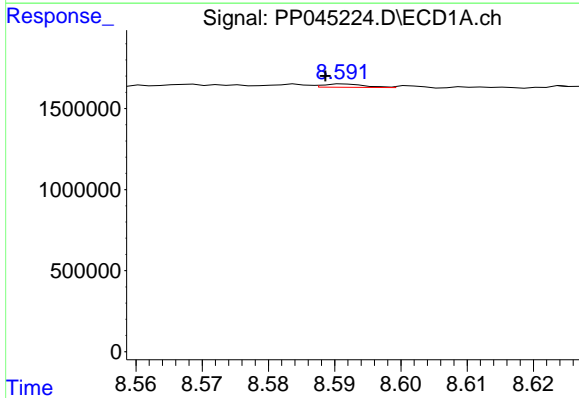
R.T.: 8.493 min  
 Delta R.T.: 0.003 min  
 Response: 33337  
 Conc: 0.17 ng/ml

Instrument :  
 ECD\_P  
 ClientSampleId :



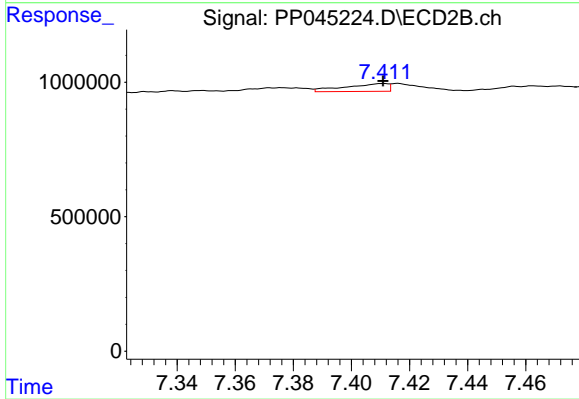
#41 AR-1268-1

R.T.: 7.338 min  
 Delta R.T.: -0.001 min  
 Response: 35693  
 Conc: 0.17 ng/ml



#42 AR-1268-2

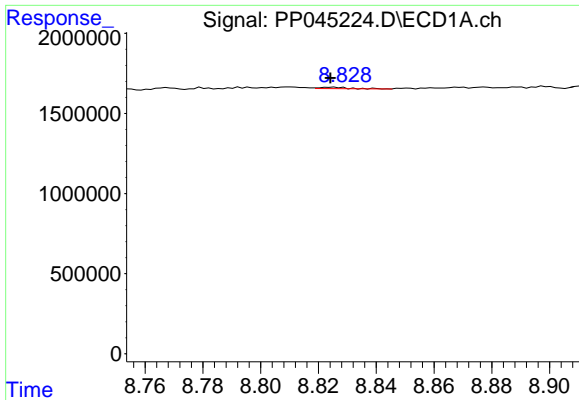
R.T.: 8.592 min  
 Delta R.T.: 0.003 min  
 Response: 92111  
 Conc: 0.53 ng/ml



#42 AR-1268-2

R.T.: 7.411 min  
 Delta R.T.: 0.000 min  
 Response: 297328  
 Conc: 1.52 ng/ml

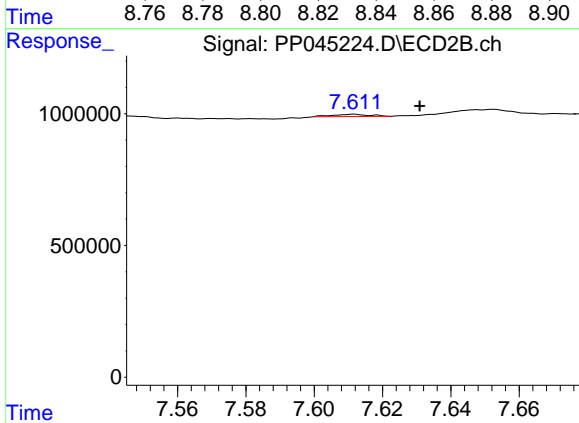




#43 AR-1268-3

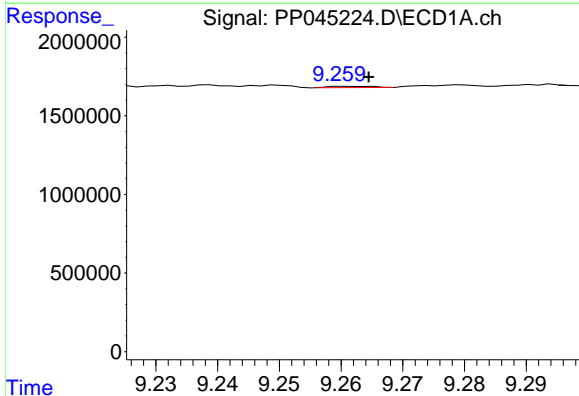
R.T.: 8.825 min  
 Delta R.T.: 0.000 min  
 Response: 60278  
 Conc: 0.39 ng/ml

Instrument :  
 ECD\_P  
 ClientSampleId :



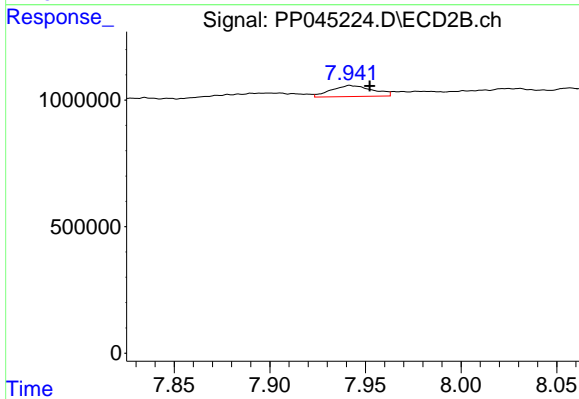
#43 AR-1268-3

R.T.: 7.612 min  
 Delta R.T.: -0.019 min  
 Response: 63176  
 Conc: 0.38 ng/ml



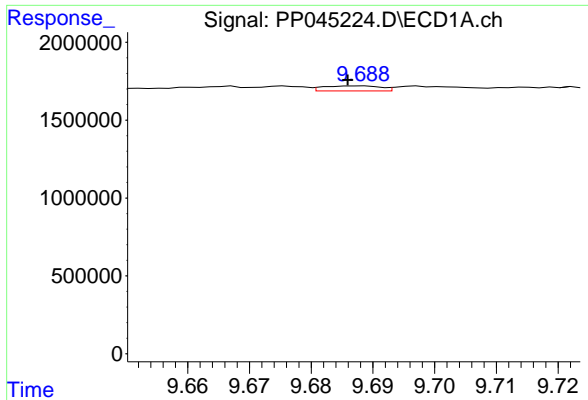
#44 AR-1268-4

R.T.: 9.261 min  
 Delta R.T.: -0.003 min  
 Response: 41362  
 Conc: 0.66 ng/ml



#44 AR-1268-4

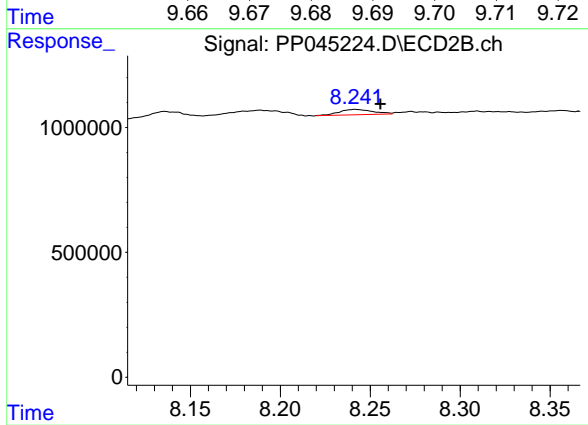
R.T.: 7.942 min  
 Delta R.T.: -0.011 min  
 Response: 655110  
 Conc: 8.55 ng/ml



#45 AR-1268-5

R.T.: 9.688 min  
Delta R.T.: 0.002 min  
Response: 210538  
Conc: 0.44 ng/ml

Instrument :  
ECD\_P  
ClientSampleId :



#45 AR-1268-5

R.T.: 8.242 min  
Delta R.T.: -0.014 min  
Response: 276830  
Conc: 0.54 ng/ml