

Data Path : Z:\pestpcbsrv\HPCHEM1\ECD\_P\Data\PP032619\  
 Data File : PP029549.D  
 Signal(s) : Signal #1: ECD1A.CH Signal #2: ECD2B.CH  
 Acq On : 27 Mar 2019 1:36  
 Operator : EI\MA  
 Sample : K2081-17  
 Misc : hexane  
 ALS Vial : 34 Sample Multiplier: 1

**Instrument :**  
 ECD\_P  
**ClientSampleId :**  
 S4C(6-18)COMP

**Manual Integrations**  
**APPROVED**  
 Sohil  
 3/28/2019 4:06:02 PM

Integration File signal 1: autoint1.e  
 Integration File signal 2: autoint2.e  
 Quant Time: Mar 27 03:41:53 2019  
 Quant Method : Z:\pestpcbsrv\HPCHEM1\ECD\_P\methods\PP032119.M  
 Quant Title : 8080.M  
 QLast Update : Fri Mar 22 09:23:06 2019  
 Response via : Initial Calibration  
 Integrator: ChemStation 6890 Scale Mode: Large solvent peaks clipped

Volume Inj. : 2 µl  
 Signal #1 Phase : ZB-CLPesticides-1 Signal #2 Phase: ZB-CLPesticides-2  
 Signal #1 Info : 30M x 0.32mm x0.5 Signal #2 Info : 30M x 0.32mm x 0.25µm

Compound	RT#1	RT#2	Resp#1	Resp#2	ng/ml	ng/ml
-----						
System Monitoring Compounds						
4) S 2,4-DCAA	11.924	12.117	18173083	23026194	555.497	536.224m

Target Compounds

(f)=RT Delta > 1/2 Window (#)=Amounts differ by > 25% (m)=manual int.

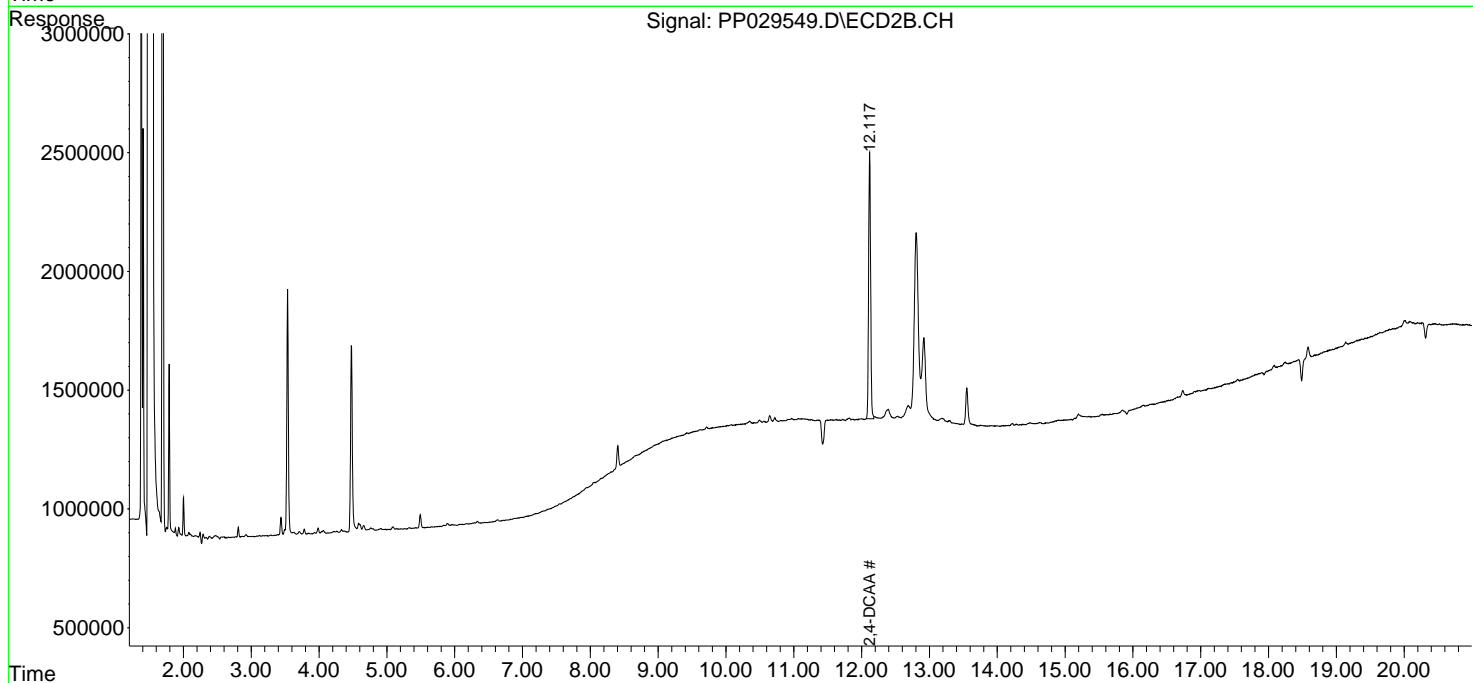
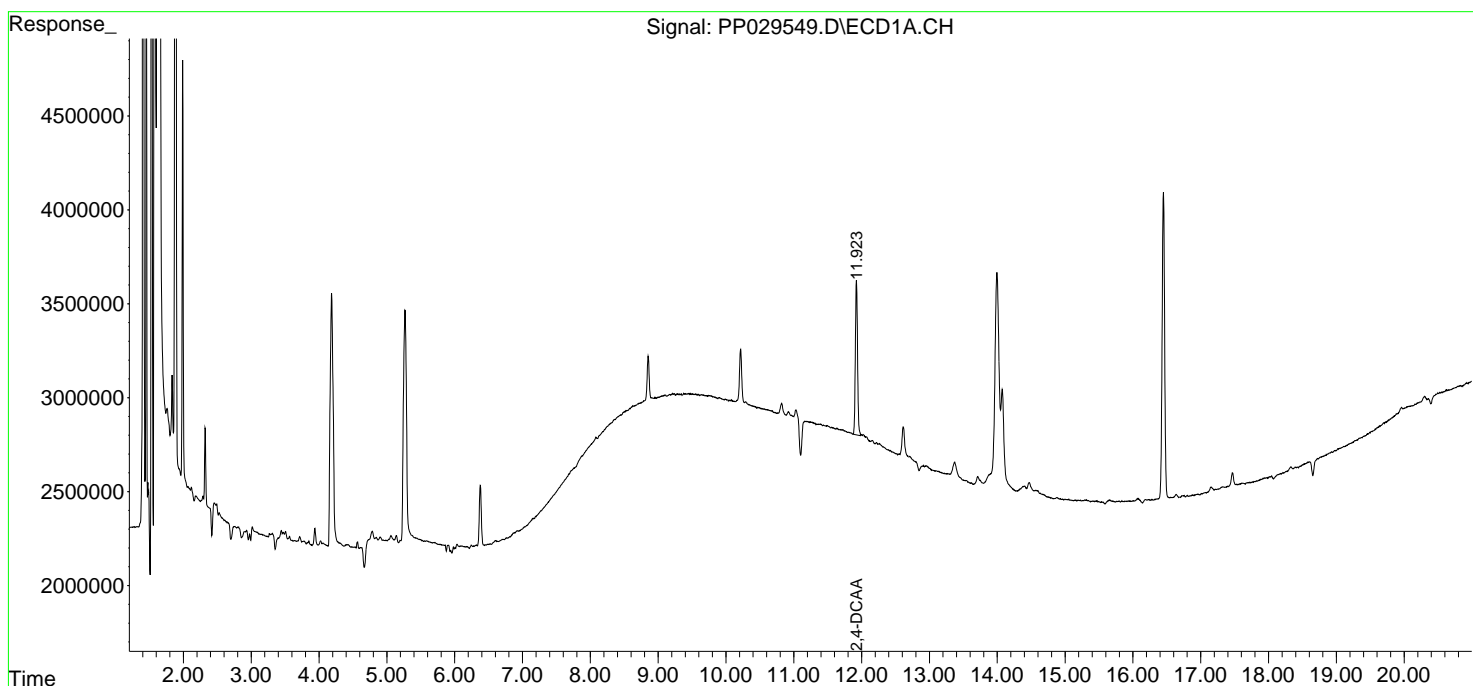
Data Path : Z:\pestpcbsrv\HPCHEM1\ECD\_P\Data\PP032619\  
 Data File : PP029549.D  
 Signal(s) : Signal #1: ECD1A.CH Signal #2: ECD2B.CH  
 Acq On : 27 Mar 2019 1:36  
 Operator : EI\MA  
 Sample : K2081-17  
 Misc : hexane  
 ALS Vial : 34 Sample Multiplier: 1

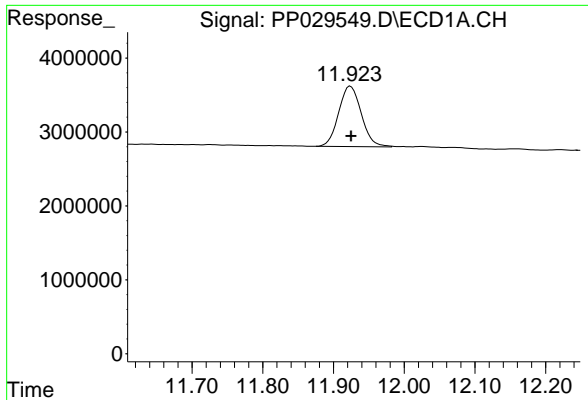
**Instrument :**  
 ECD\_P  
**Client Sampled :**  
 S4C(6-18)COMP

**Manual Integrations**  
**APPROVED**  
 Sohil  
 3/28/2019 4:06:02 PM

Integration File signal 1: autoint1.e  
 Integration File signal 2: autoint2.e  
 Quant Time: Mar 27 03:41:53 2019  
 Quant Method : Z:\pestpcbsrv\HPCHEM1\ECD\_P\methods\PP032119.M  
 Quant Title : 8080.M  
 QLast Update : Fri Mar 22 09:23:06 2019  
 Response via : Initial Calibration  
 Integrator: ChemStation 6890 Scale Mode: Large solvent peaks clipped

Volume Inj. : 2 µl  
 Signal #1 Phase : ZB-CLPesticides-1 Signal #2 Phase: ZB-CLPesticides-2  
 Signal #1 Info : 30M x 0.32mm x0.5 Signal #2 Info : 30M x 0.32mm x 0.25µm





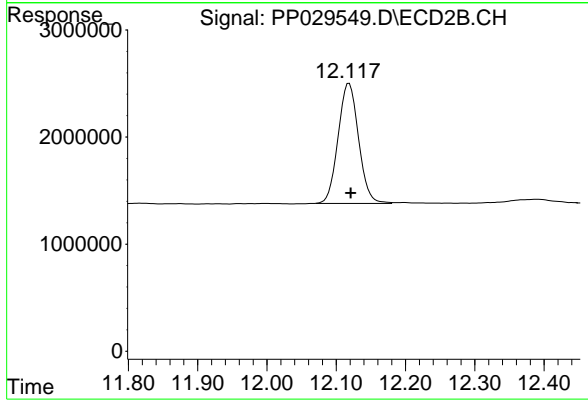
#4 2,4-DCAA

R.T.: 11.924 min  
Delta R.T.: 0.000 min  
Response: 18173083  
Conc: 555.50 ng/ml

Instrument :  
ECD\_P  
ClientSampled :  
S4C(6-18)COMP

Manual Integrations  
APPROVED

Sohil  
3/28/2019 4:06:02 PM



#4 2,4-DCAA

R.T.: 12.117 min  
Delta R.T.: -0.004 min  
Response: 23026194  
Conc: 536.22 ng/ml m