

Data Path : Z:\pestpcbsrv\HPCHEM1\ECD_P\Data\PP032621\
 Data File : PP034412.D
 Signal(s) : Signal #1: ECD1A.CH Signal #2: ECD2B.CH
 Acq On : 26 Mar 2021 12:51
 Operator : DD\AJ
 Sample : AR1268CCC500
 Misc :
 ALS Vial : 8 Sample Multiplier: 1

Instrument :
 ECD_P
 ClientSampleId :
 AR1268CCC500

Integration File signal 1: autoint1.e
 Integration File signal 2: autoint2.e
 Quant Time: Mar 27 00:07:03 2021
 Quant Method : Z:\pestpcbsrv\HPCHEM1\ECD_P\methods\PP031821.M
 Quant Title : GC EXTRACTABLES
 QLast Update : Sat Mar 20 01:42:16 2021
 Response via : Initial Calibration
 Integrator: ChemStation 6890 Scale Mode: Small noise peaks clipped

Volume Inj. : 2 µl
 Signal #1 Phase : ZB-MR1 Signal #2 Phase: ZB-MR2
 Signal #1 Info : 30Mx0.32mmx 0.50µ Signal #2 Info : 30M x 0.32mm x 0.25µm

	Compound	RT#1	RT#2	Resp#1	Resp#2	ng/ml	ng/ml

System Monitoring Compounds							
1)	SA Tetrachlo...	4.848	4.259	3586261	1974200	42.690	44.612
2)	SA Decachlor...	10.778	9.574	6645182	2363421	84.677	89.561
Target Compounds							
9)	L2 AR-1221-2	5.197	4.615	41091	27333	59.707	77.075 #
20)	L4 AR-1242-5	7.138	0.000	20219	0	13.263	N.D. #
24)	L5 AR-1248-4	7.099	0.000	21553	0	8.342	N.D. #
25)	L5 AR-1248-5	7.138	0.000	20219	0	7.791	N.D. #
26)	L6 AR-1254-1	7.068	0.000	30620	0	11.187	N.D. #
27)	L6 AR-1254-2	7.302	0.000	18820	0	4.520	N.D. #
28)	L6 AR-1254-3	7.700f	0.000	26943	0	6.203	N.D. #
29)	L6 AR-1254-4	7.972	0.000	27531	0	9.483	N.D. #
30)	L6 AR-1254-5	8.382f	0.000	22140	0	6.632	N.D. #
32)	L7 AR-1260-2	8.111	7.290	16475	14227	4.384	7.951 #
33)	L7 AR-1260-3	8.474	7.453	822538	29638	269.516	17.516 #
34)	L7 AR-1260-4	8.721	7.925	1134565	524988	325.879	368.734
35)	L7 AR-1260-5	9.023	8.170	462578	217472	67.572	70.035
36)	L8 AR-1262-1	8.474	0.000	822538	0	184.385	N.D. #
37)	L8 AR-1262-2	9.023	8.170	462578	217472	61.027	67.376
38)	L8 AR-1262-3	9.324	8.456	5012413	1998771	940.196	1458.882 #
39)	L8 AR-1262-4	9.418	8.521	4843959	1909119	1123.984	788.388 #
40)	L8 AR-1262-5	10.060	9.017	1721055	684793	605.992	651.347
41)	L9 AR-1268-1	9.324	8.456	5012413	1998771	503.314	504.967
42)	L9 AR-1268-2	9.418	8.521	4843959	1909119	519.152	517.181
43)	L9 AR-1268-3	9.634	8.727	4356607	1712576	489.883	502.659
44)	L9 AR-1268-4	10.060	9.017	1721055	684793	552.856	569.058
45)	L9 AR-1268-5	10.456	9.315	14634665	5188984	529.628	556.557

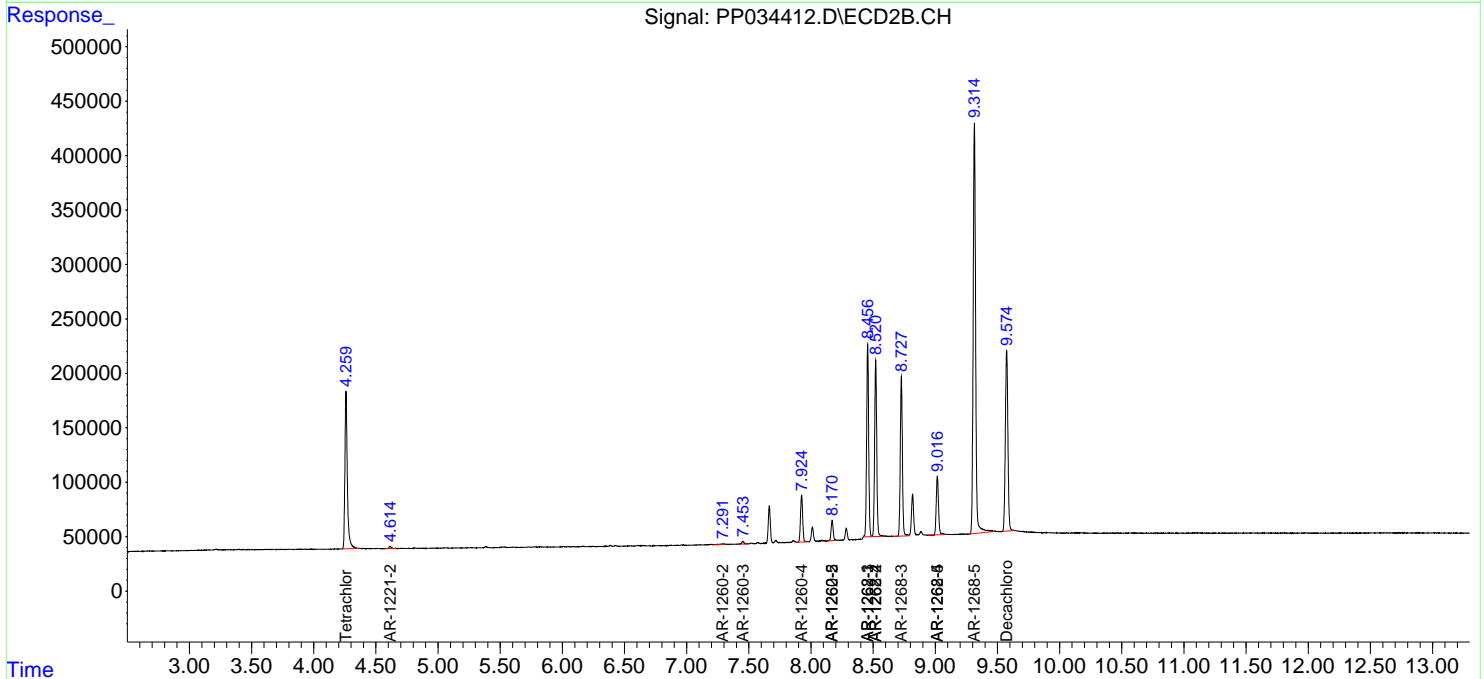
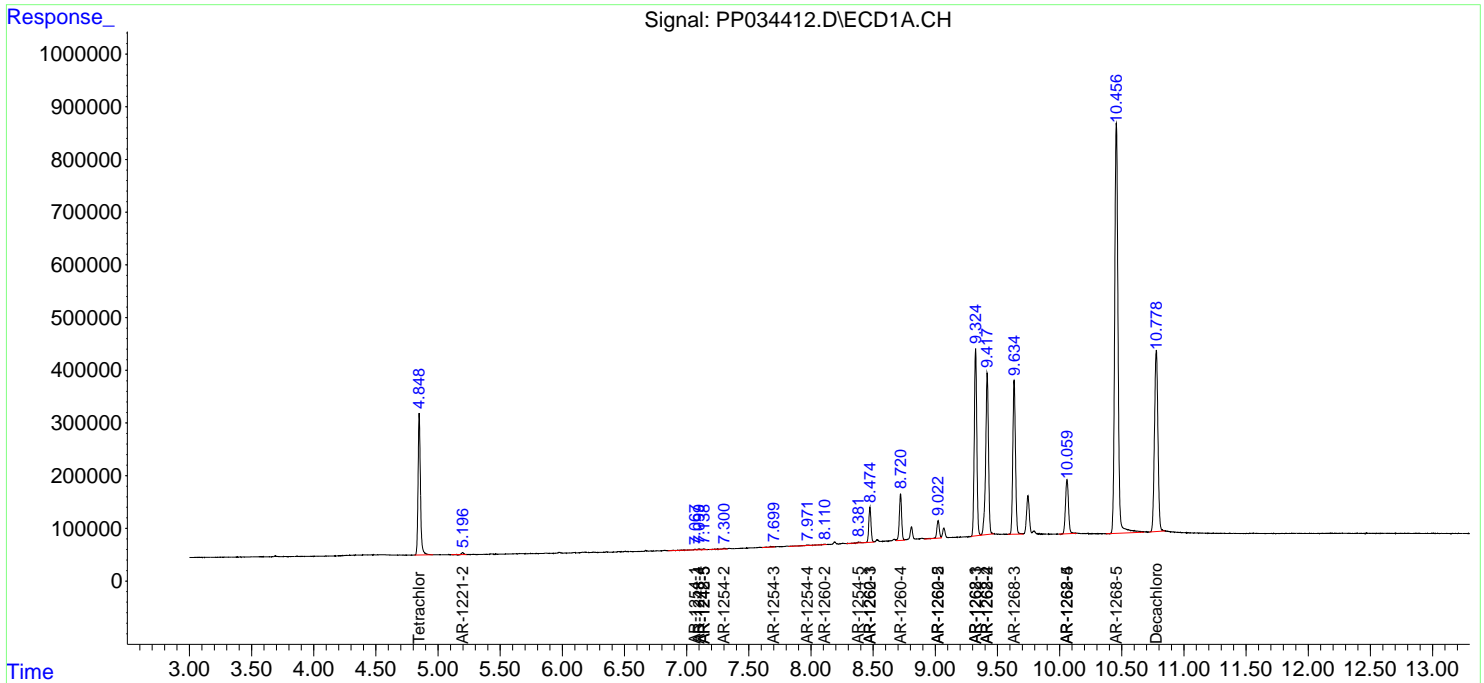
(f)=RT Delta > 1/2 Window (#)=Amounts differ by > 25% (m)=manual int.

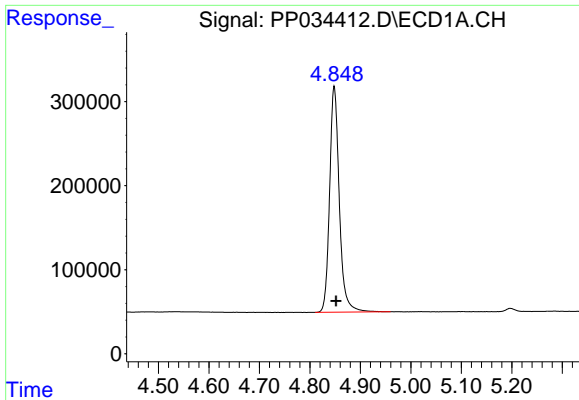
Data Path : Z:\pestpcbsrv\HPCHEM1\ECD_P\Data\PP032621\
 Data File : PP034412.D
 Signal(s) : Signal #1: ECD1A.CH Signal #2: ECD2B.CH
 Acq On : 26 Mar 2021 12:51
 Operator : DD\AJ
 Sample : AR1268CCC500
 Misc :
 ALS Vial : 8 Sample Multiplier: 1

Instrument :
 ECD_P
 ClientSampled :
 AR1268CCC500

Integration File signal 1: autoint1.e
 Integration File signal 2: autoint2.e
 Quant Time: Mar 27 00:07:03 2021
 Quant Method : Z:\pestpcbsrv\HPCHEM1\ECD_P\methods\PP031821.M
 Quant Title : GC EXTRACTABLES
 QLast Update : Sat Mar 20 01:42:16 2021
 Response via : Initial Calibration
 Integrator: ChemStation 6890 Scale Mode: Small noise peaks clipped

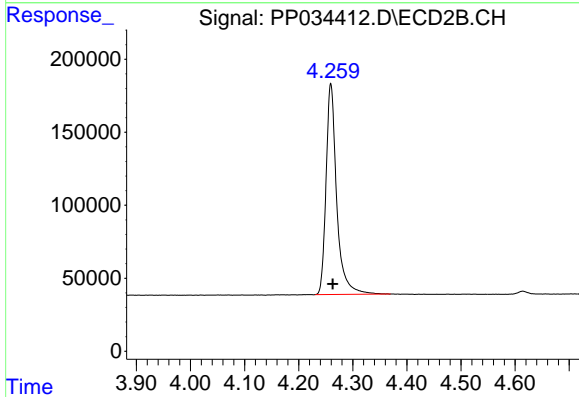
Volume Inj. : 2 µl
 Signal #1 Phase : ZB-MR1 Signal #2 Phase: ZB-MR2
 Signal #1 Info : 30Mx0.32mmx 0.50µ Signal #2 Info : 30M x 0.32mm x 0.25µm



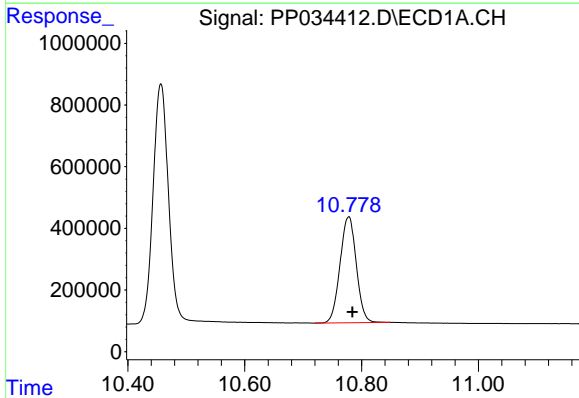


#1 Tetrachloro-m-xylene
 R.T.: 4.848 min
 Delta R.T.: -0.004 min
 Response: 3586261
 Conc: 42.69 ng/ml

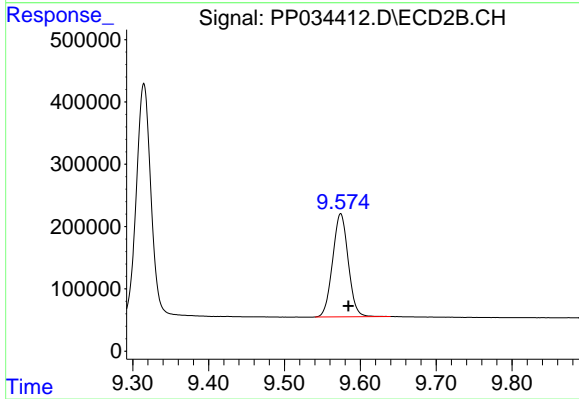
Instrument :
 ECD_P
 ClientSampleId :
 AR1268CCC500



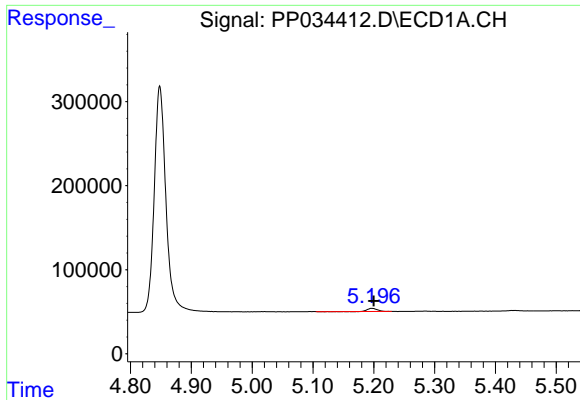
#1 Tetrachloro-m-xylene
 R.T.: 4.259 min
 Delta R.T.: -0.003 min
 Response: 1974200
 Conc: 44.61 ng/ml



#2 Decachlorobiphenyl
 R.T.: 10.778 min
 Delta R.T.: -0.006 min
 Response: 6645182
 Conc: 84.68 ng/ml

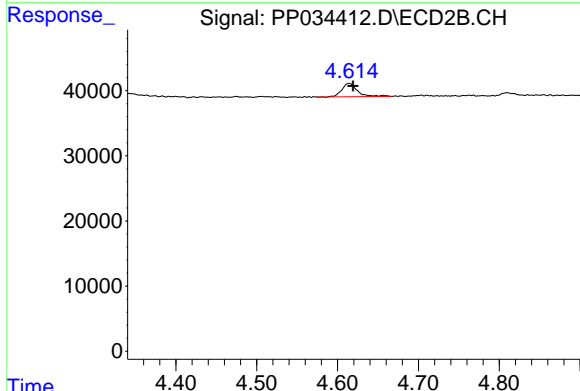


#2 Decachlorobiphenyl
 R.T.: 9.574 min
 Delta R.T.: -0.010 min
 Response: 2363421
 Conc: 89.56 ng/ml

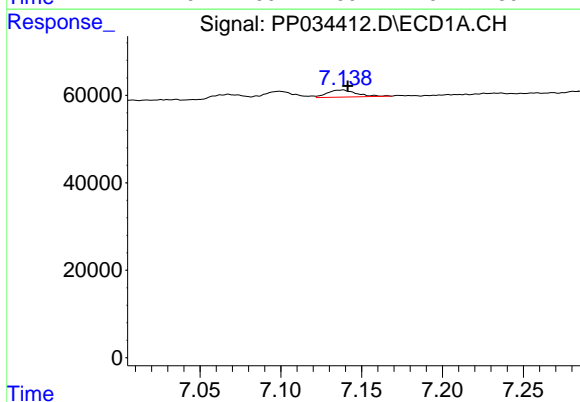


#9 AR-1221-2
 R.T.: 5.197 min
 Delta R.T.: -0.003 min
 Response: 41091
 Conc: 59.71 ng/ml

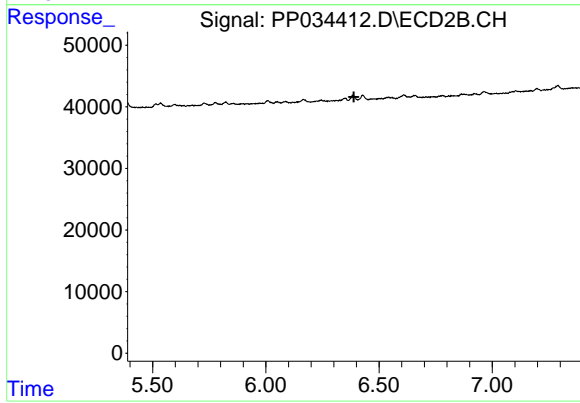
Instrument :
 ECD_P
 ClientSampleId :
 AR1268CCC500



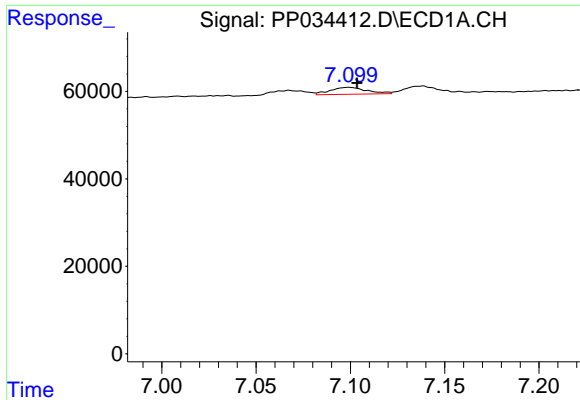
#9 AR-1221-2
 R.T.: 4.615 min
 Delta R.T.: -0.005 min
 Response: 27333
 Conc: 77.07 ng/ml



#20 AR-1242-5
 R.T.: 7.138 min
 Delta R.T.: -0.004 min
 Response: 20219
 Conc: 13.26 ng/ml

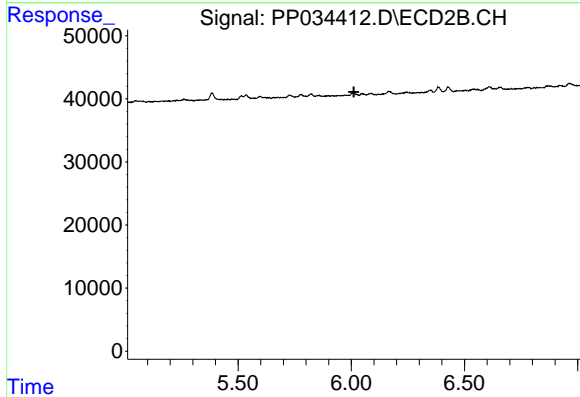


#20 AR-1242-5
 R.T.: 0.000 min
 Exp R.T. : 6.389 min
 Response: 0
 Conc: N.D.

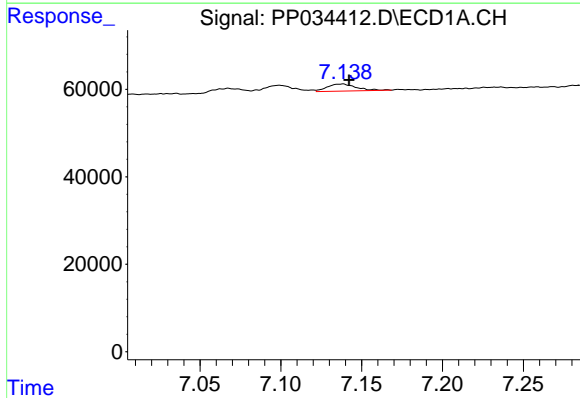


#24 AR-1248-4
 R.T.: 7.099 min
 Delta R.T.: -0.004 min
 Response: 21553
 Conc: 8.34 ng/ml

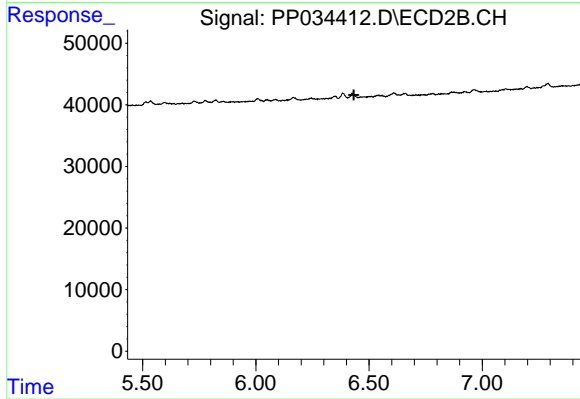
Instrument :
 ECD_P
ClientSampleId :
 AR1268CCC500



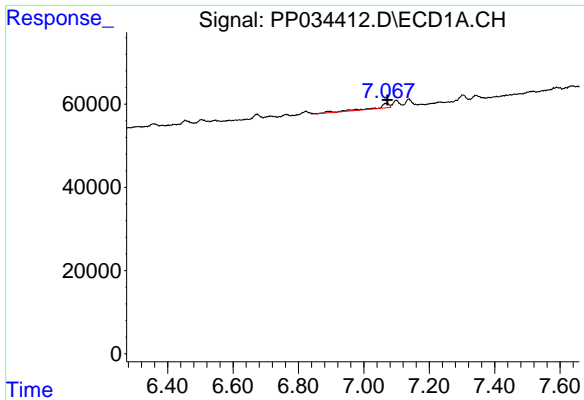
#24 AR-1248-4
 R.T.: 0.000 min
 Exp R.T. : 6.012 min
 Response: 0
 Conc: N.D.



#25 AR-1248-5
 R.T.: 7.138 min
 Delta R.T.: -0.004 min
 Response: 20219
 Conc: 7.79 ng/ml



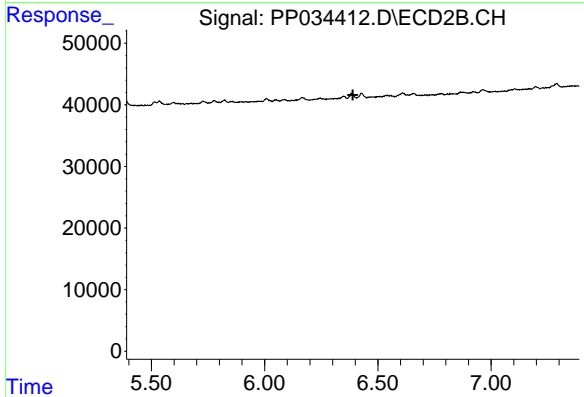
#25 AR-1248-5
 R.T.: 0.000 min
 Exp R.T. : 6.433 min
 Response: 0
 Conc: N.D.



#26 AR-1254-1

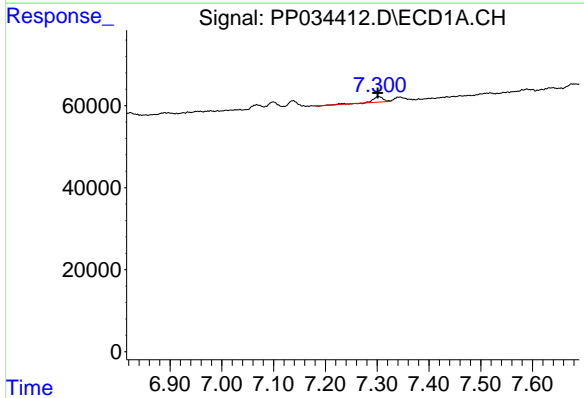
R.T.: 7.068 min
 Delta R.T.: -0.004 min
 Response: 30620
 Conc: 11.19 ng/ml

Instrument :
 ECD_P
 ClientSampleId :
 AR1268CCC500



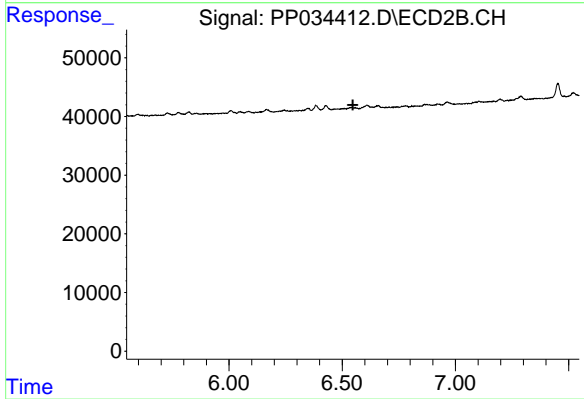
#26 AR-1254-1

R.T.: 0.000 min
 Exp R.T. : 6.390 min
 Response: 0
 Conc: N.D.



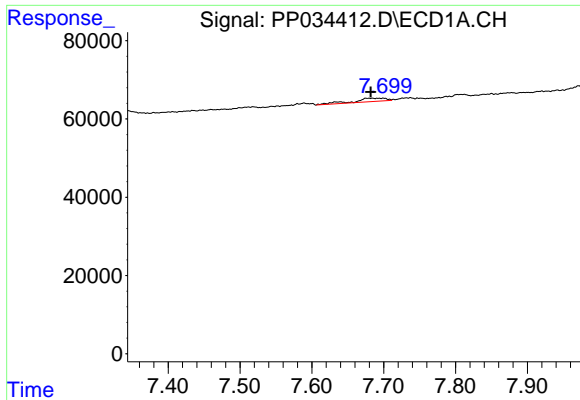
#27 AR-1254-2

R.T.: 7.302 min
 Delta R.T.: 0.000 min
 Response: 18820
 Conc: 4.52 ng/ml



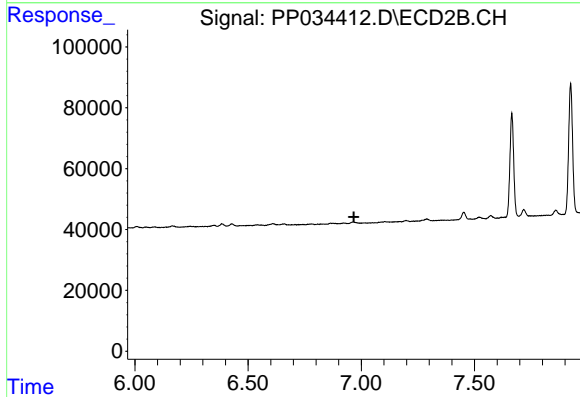
#27 AR-1254-2

R.T.: 0.000 min
 Exp R.T. : 6.547 min
 Response: 0
 Conc: N.D.

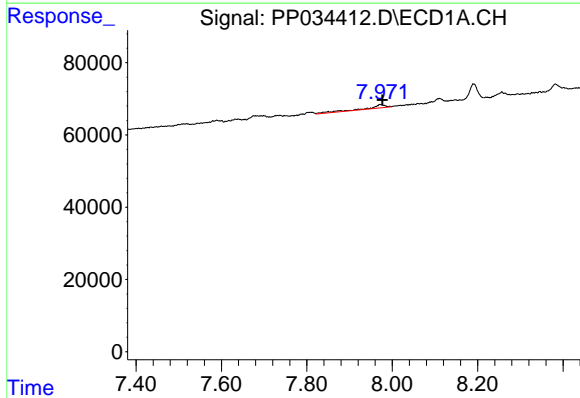


#28 AR-1254-3
 R.T.: 7.700 min
 Delta R.T.: 0.018 min
 Response: 26943
 Conc: 6.20 ng/ml

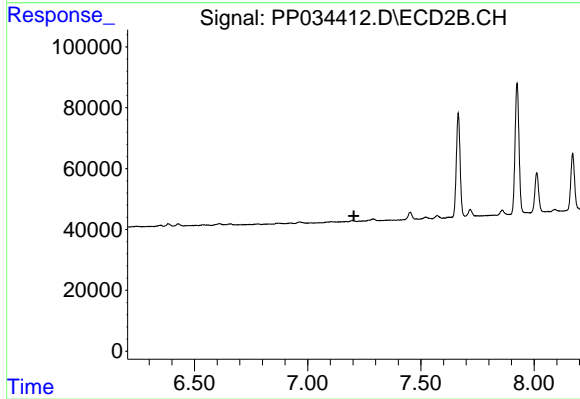
Instrument :
 ECD_P
 ClientSampleId :
 AR1268CCC500



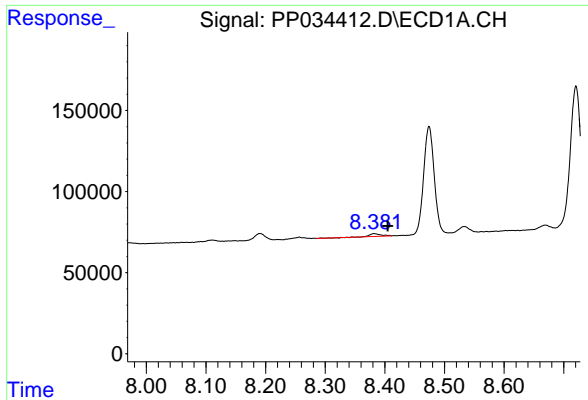
#28 AR-1254-3
 R.T.: 0.000 min
 Exp R.T. : 6.968 min
 Response: 0
 Conc: N.D.



#29 AR-1254-4
 R.T.: 7.972 min
 Delta R.T.: -0.006 min
 Response: 27531
 Conc: 9.48 ng/ml



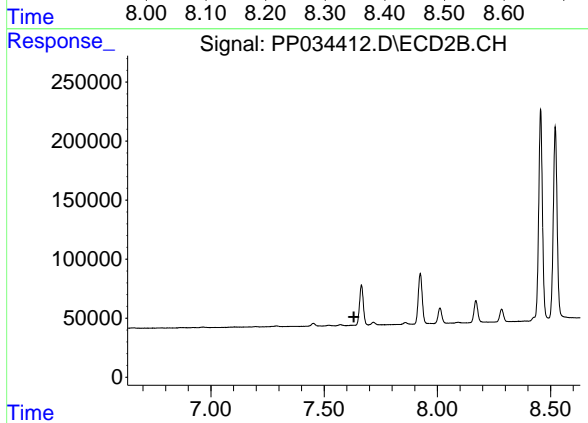
#29 AR-1254-4
 R.T.: 0.000 min
 Exp R.T. : 7.204 min
 Response: 0
 Conc: N.D.



#30 AR-1254-5

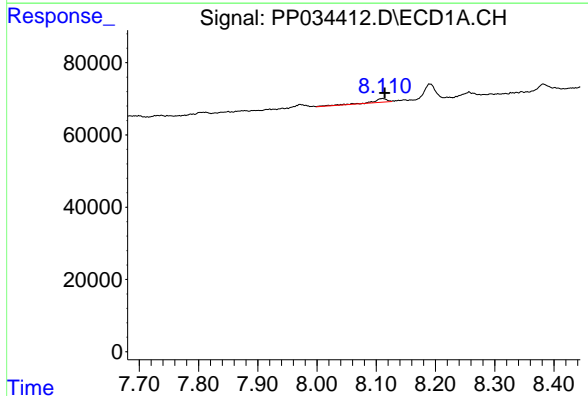
R.T.: 8.382 min
 Delta R.T.: -0.023 min
 Response: 22140
 Conc: 6.63 ng/ml

Instrument :
 ECD_P
 ClientSampleId :
 AR1268CCC500



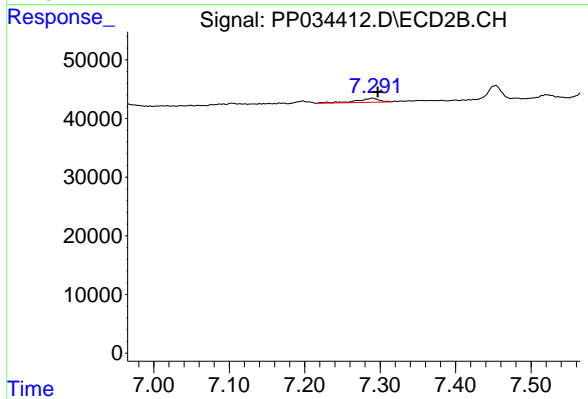
#30 AR-1254-5

R.T.: 0.000 min
 Exp R.T. : 7.632 min
 Response: 0
 Conc: N.D.



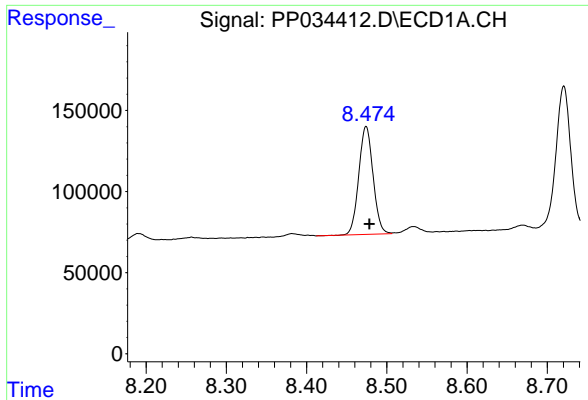
#32 AR-1260-2

R.T.: 8.111 min
 Delta R.T.: -0.003 min
 Response: 16475
 Conc: 4.38 ng/ml



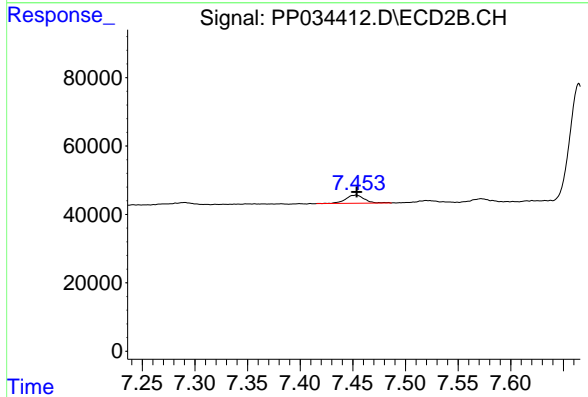
#32 AR-1260-2

R.T.: 7.290 min
 Delta R.T.: -0.007 min
 Response: 14227
 Conc: 7.95 ng/ml

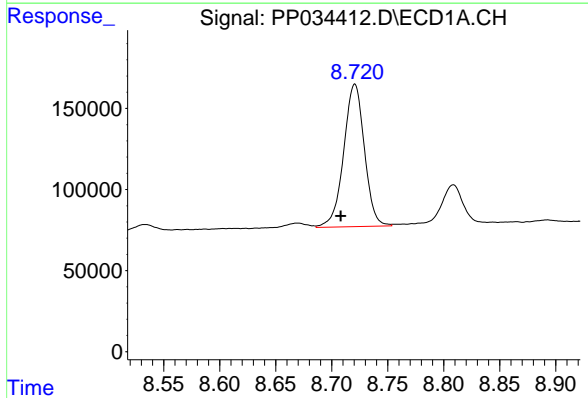


#33 AR-1260-3
 R.T.: 8.474 min
 Delta R.T.: -0.004 min
 Response: 822538
 Conc: 269.52 ng/ml

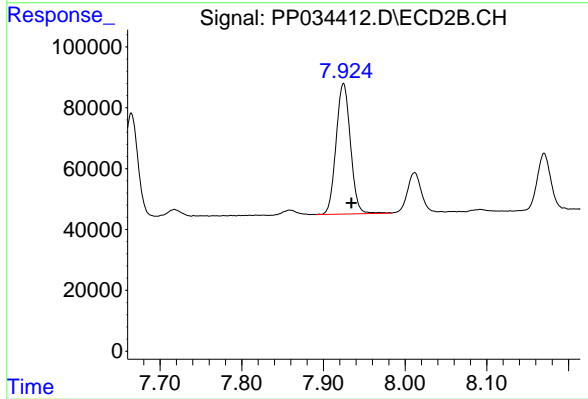
Instrument :
 ECD_P
 ClientSampleId :
 AR1268CCC500



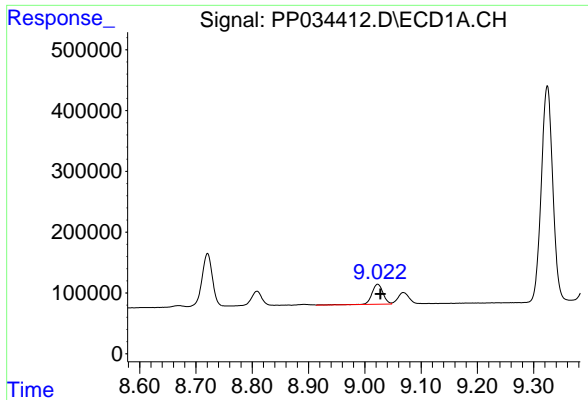
#33 AR-1260-3
 R.T.: 7.453 min
 Delta R.T.: 0.000 min
 Response: 29638
 Conc: 17.52 ng/ml



#34 AR-1260-4
 R.T.: 8.721 min
 Delta R.T.: 0.013 min
 Response: 1134565
 Conc: 325.88 ng/ml

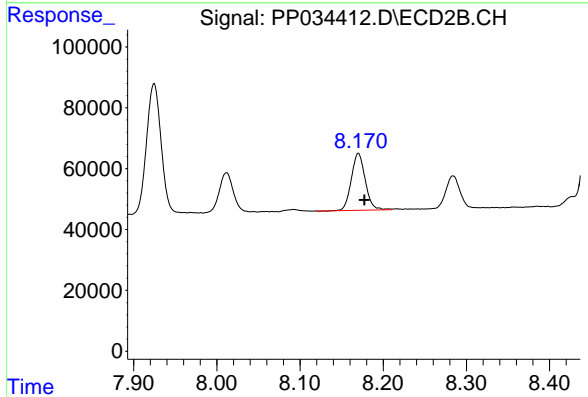


#34 AR-1260-4
 R.T.: 7.925 min
 Delta R.T.: -0.010 min
 Response: 524988
 Conc: 368.73 ng/ml

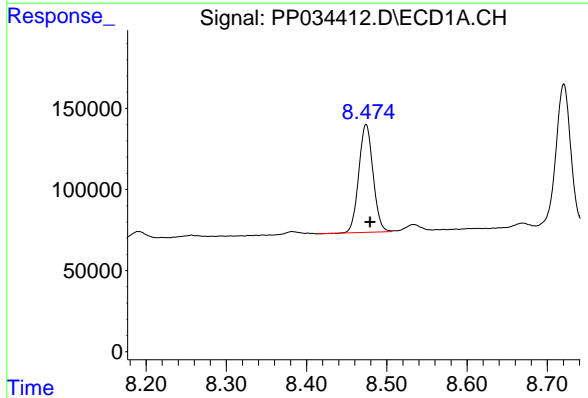


#35 AR-1260-5
 R.T.: 9.023 min
 Delta R.T.: -0.005 min
 Response: 462578
 Conc: 67.57 ng/ml

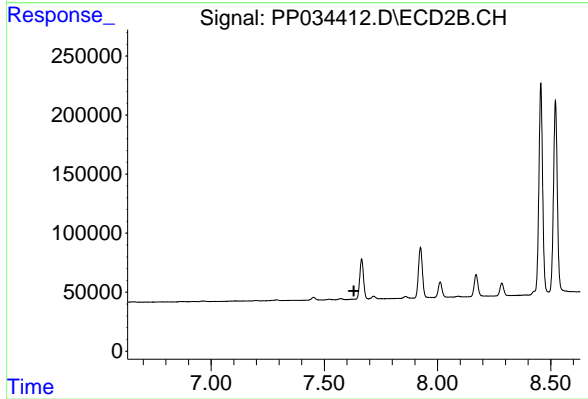
Instrument :
 ECD_P
 ClientSampleId :
 AR1268CCC500



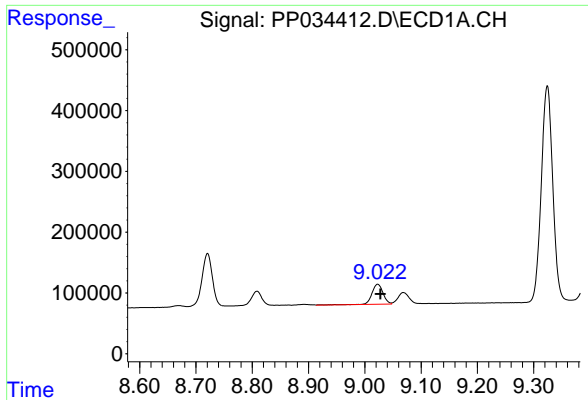
#35 AR-1260-5
 R.T.: 8.170 min
 Delta R.T.: -0.007 min
 Response: 217472
 Conc: 70.03 ng/ml



#36 AR-1262-1
 R.T.: 8.474 min
 Delta R.T.: -0.005 min
 Response: 822538
 Conc: 184.39 ng/ml

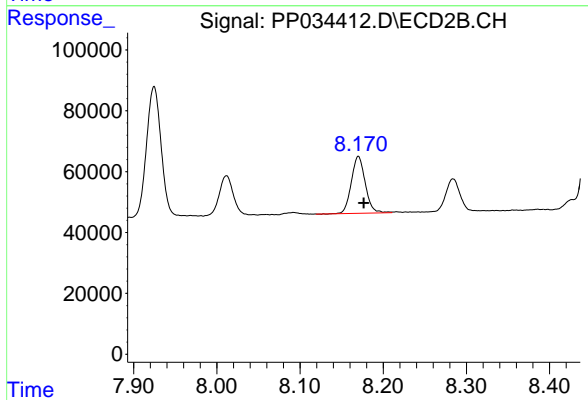


#36 AR-1262-1
 R.T.: 0.000 min
 Exp R.T. : 7.630 min
 Response: 0
 Conc: N.D.

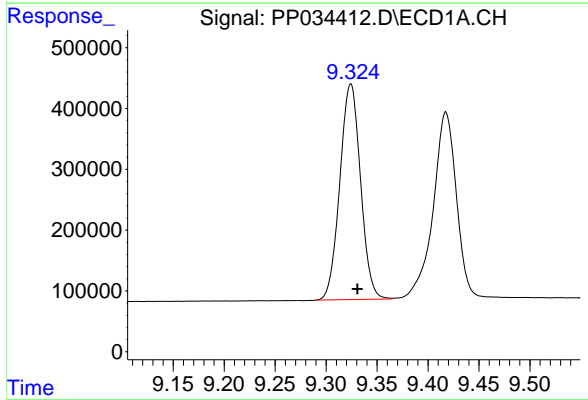


#37 AR-1262-2
 R.T.: 9.023 min
 Delta R.T.: -0.005 min
 Response: 462578
 Conc: 61.03 ng/ml

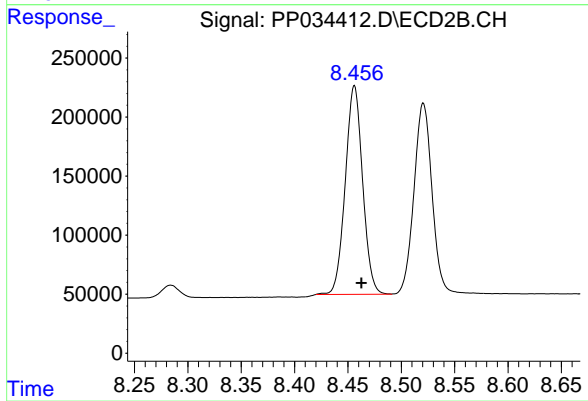
Instrument :
 ECD_P
 ClientSampleId :
 AR1268CCC500



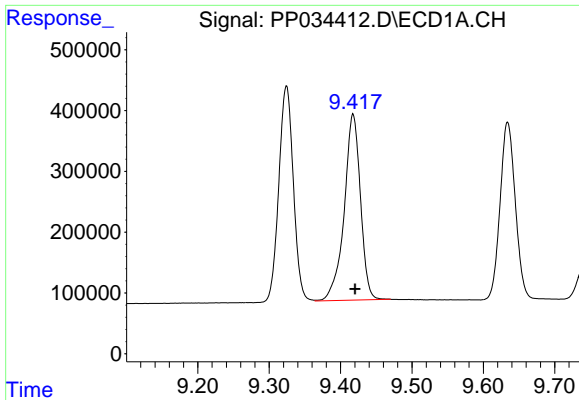
#37 AR-1262-2
 R.T.: 8.170 min
 Delta R.T.: -0.007 min
 Response: 217472
 Conc: 67.38 ng/ml



#38 AR-1262-3
 R.T.: 9.324 min
 Delta R.T.: -0.007 min
 Response: 5012413
 Conc: 940.20 ng/ml

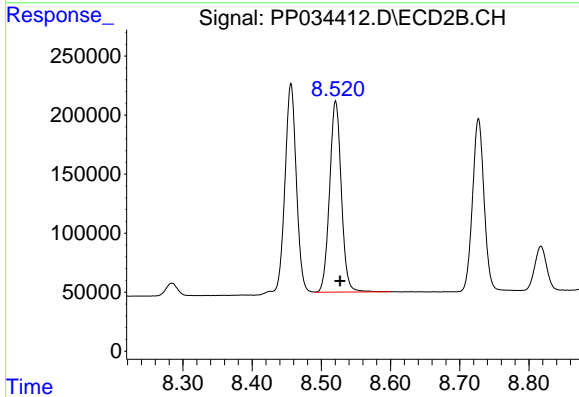


#38 AR-1262-3
 R.T.: 8.456 min
 Delta R.T.: -0.007 min
 Response: 1998771
 Conc: 1458.88 ng/ml

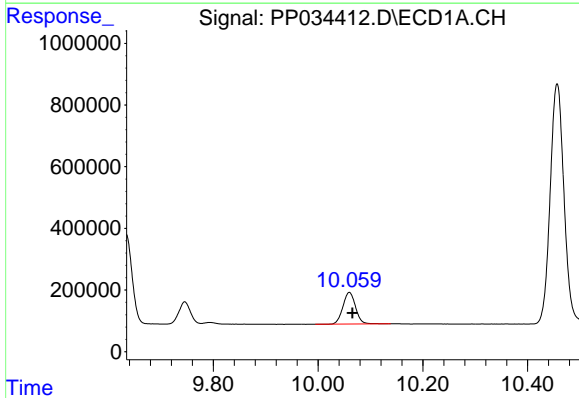


#39 AR-1262-4
 R.T.: 9.418 min
 Delta R.T.: -0.003 min
 Response: 4843959
 Conc: 1123.98 ng/ml

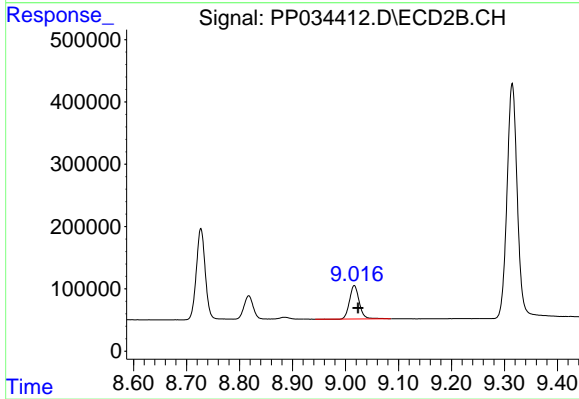
Instrument :
 ECD_P
ClientSampleId :
 AR1268CCC500



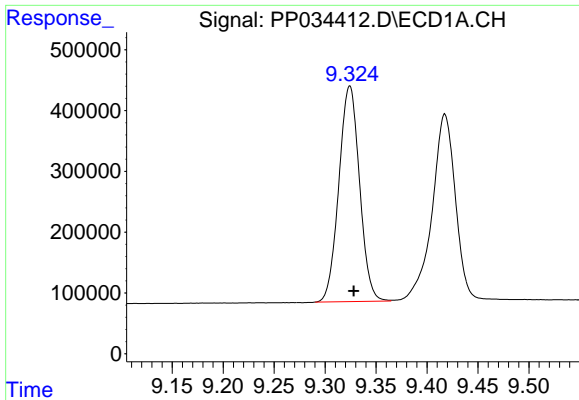
#39 AR-1262-4
 R.T.: 8.521 min
 Delta R.T.: -0.006 min
 Response: 1909119
 Conc: 788.39 ng/ml



#40 AR-1262-5
 R.T.: 10.060 min
 Delta R.T.: -0.006 min
 Response: 1721055
 Conc: 605.99 ng/ml



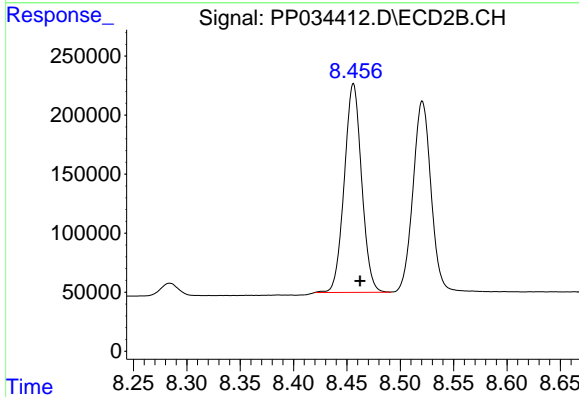
#40 AR-1262-5
 R.T.: 9.017 min
 Delta R.T.: -0.007 min
 Response: 684793
 Conc: 651.35 ng/ml



#41 AR-1268-1

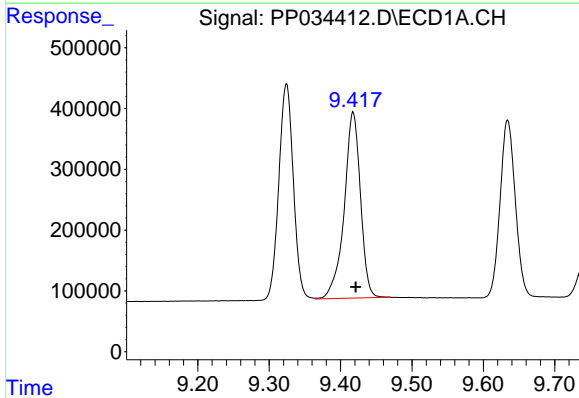
R.T.: 9.324 min
Delta R.T.: -0.004 min
Response: 5012413
Conc: 503.31 ng/ml

Instrument :
ECD_P
ClientSampleId :
AR1268CCC500



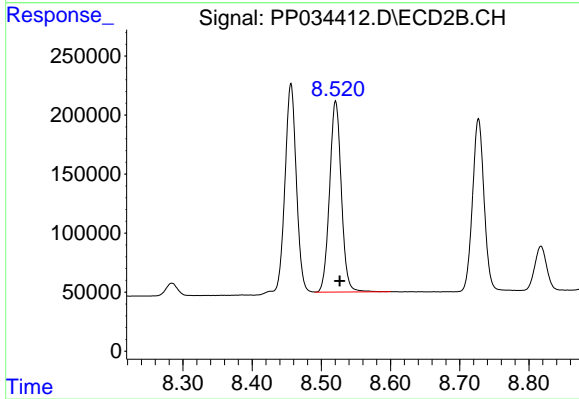
#41 AR-1268-1

R.T.: 8.456 min
Delta R.T.: -0.006 min
Response: 1998771
Conc: 504.97 ng/ml



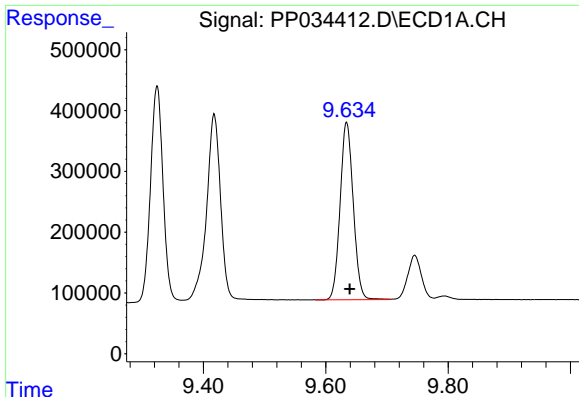
#42 AR-1268-2

R.T.: 9.418 min
Delta R.T.: -0.004 min
Response: 4843959
Conc: 519.15 ng/ml



#42 AR-1268-2

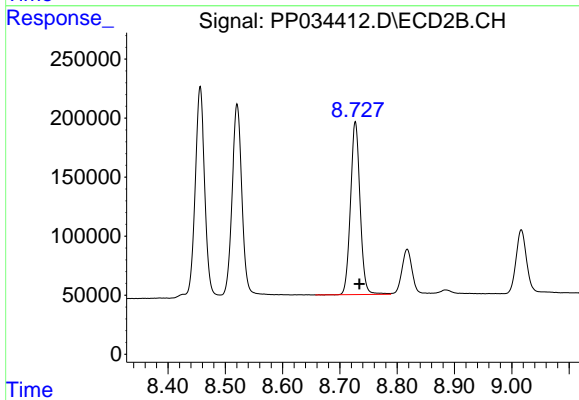
R.T.: 8.521 min
Delta R.T.: -0.006 min
Response: 1909119
Conc: 517.18 ng/ml



#43 AR-1268-3

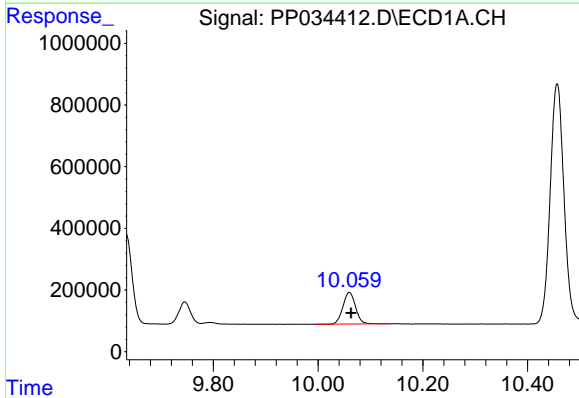
R.T.: 9.634 min
 Delta R.T.: -0.005 min
 Response: 4356607
 Conc: 489.88 ng/ml

Instrument :
 ECD_P
 ClientSampleId :
 AR1268CCC500



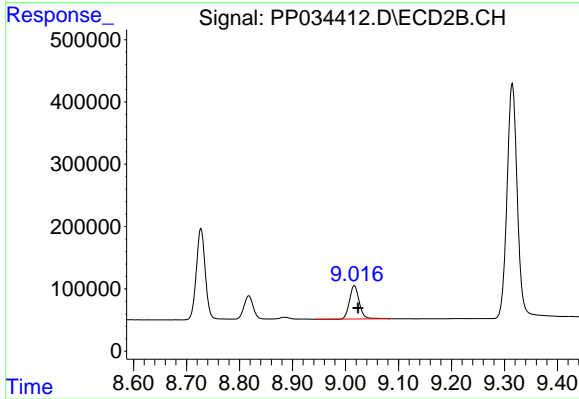
#43 AR-1268-3

R.T.: 8.727 min
 Delta R.T.: -0.007 min
 Response: 1712576
 Conc: 502.66 ng/ml



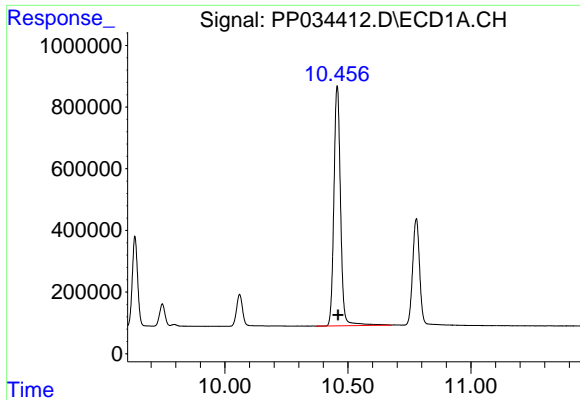
#44 AR-1268-4

R.T.: 10.060 min
 Delta R.T.: -0.004 min
 Response: 1721055
 Conc: 552.86 ng/ml



#44 AR-1268-4

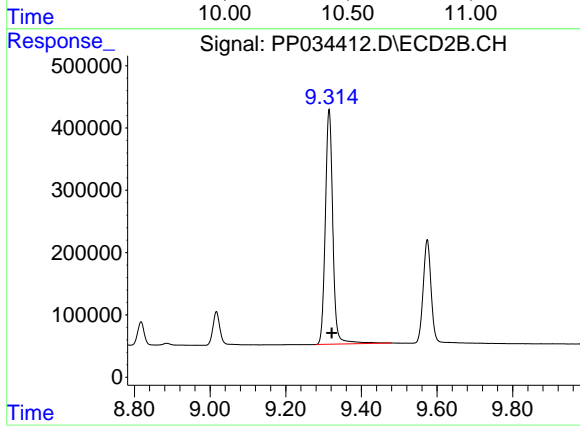
R.T.: 9.017 min
 Delta R.T.: -0.007 min
 Response: 684793
 Conc: 569.06 ng/ml



#45 AR-1268-5

R.T.: 10.456 min
Delta R.T.: -0.004 min
Response: 14634665
Conc: 529.63 ng/ml

Instrument :
ECD_P
ClientSampleId :
AR1268CCC500



#45 AR-1268-5

R.T.: 9.315 min
Delta R.T.: -0.007 min
Response: 5188984
Conc: 556.56 ng/ml