

Data Path : Z:\pestpcbsrv\HPCHEM1\ECD\_P\Data\PP032621\  
 Data File : PP034404.D  
 Signal(s) : Signal #1: ECD1A.CH Signal #2: ECD2B.CH  
 Acq On : 26 Mar 2021 10:14  
 Operator : DD\AJ  
 Sample : M1775-02  
 Misc :  
 ALS Vial : 7 Sample Multiplier: 1

**Instrument :**  
 ECD\_P  
**ClientSampled :**  
 11979

**Manual Integrations**  
**APPROVED**  
 Ankita  
 4/1/2021 12:50:41 PM

Integration File signal 1: autoint1.e  
 Integration File signal 2: autoint2.e  
 Quant Time: Mar 27 06:47:43 2021  
 Quant Method : Z:\pestpcbsrv\HPCHEM1\ECD\_P\methods\PP031821.M  
 Quant Title : GC EXTRACTABLES  
 QLast Update : Sat Mar 20 01:42:16 2021  
 Response via : Initial Calibration  
 Integrator: ChemStation 6890 Scale Mode: Small noise peaks clipped

Volume Inj. : 2 µl  
 Signal #1 Phase : ZB-MR1 Signal #2 Phase: ZB-MR2  
 Signal #1 Info : 30Mx0.32mmx 0.50µ Signal #2 Info : 30M x 0.32mm x 0.25µm

Compound	RT#1	RT#2	Resp#1	Resp#2	ng/ml	ng/ml
-----						
System Monitoring Compounds						
1) SA Tetrachlo...	4.848	4.259	780457	432981	9.290	9.784
2) SA Decachlor...	10.776	9.572	430972	162583	5.492m	6.161

Target Compounds

(f)=RT Delta > 1/2 Window (#)=Amounts differ by > 25% (m)=manual int.

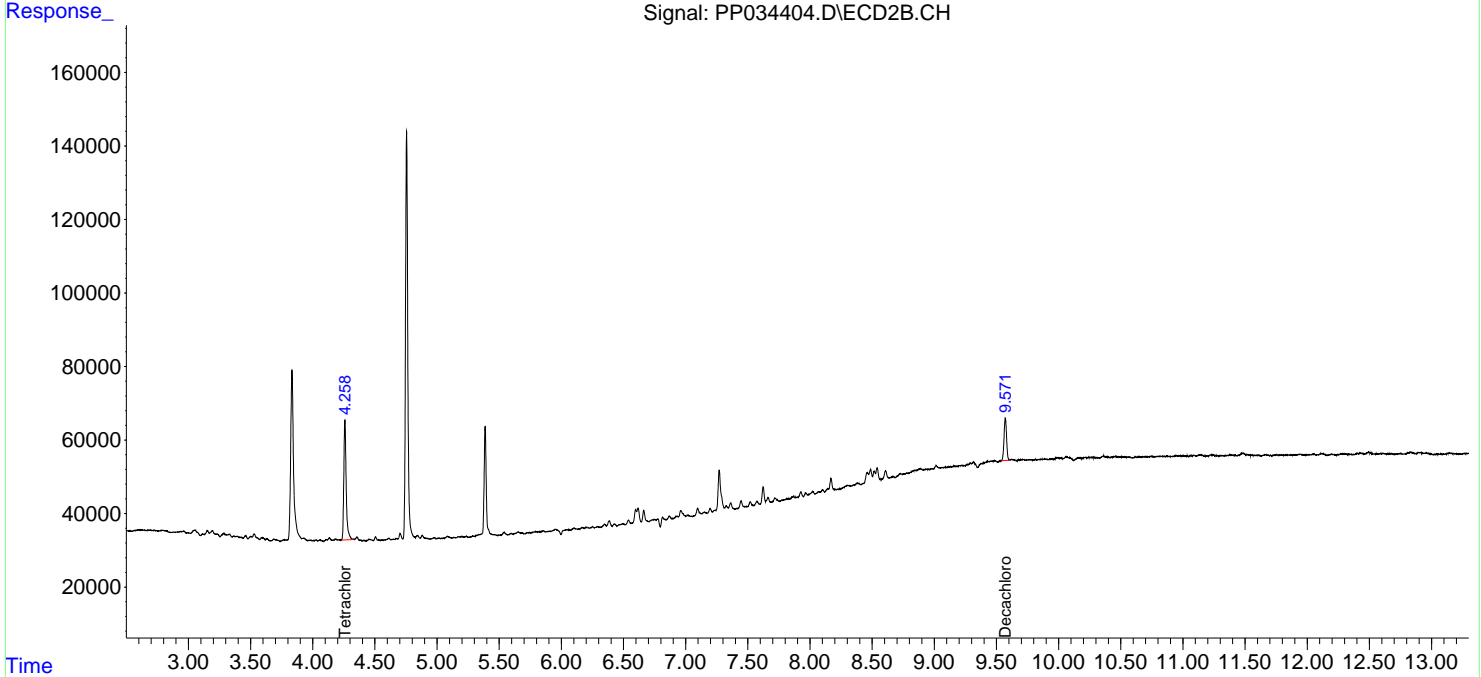
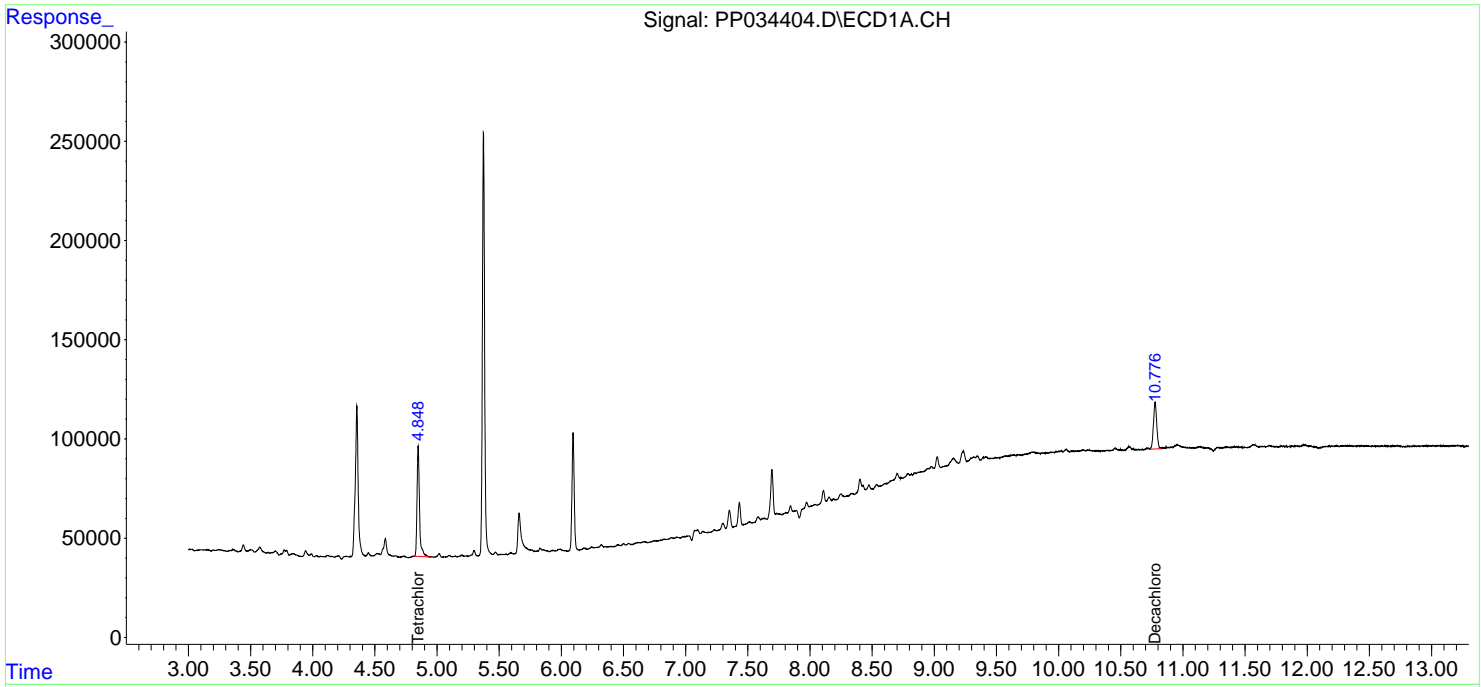
Data Path : Z:\pestpcbsrv\HPCHEM1\ECD\_P\Data\PP032621\  
 Data File : PP034404.D  
 Signal(s) : Signal #1: ECD1A.CH Signal #2: ECD2B.CH  
 Acq On : 26 Mar 2021 10:14  
 Operator : DD\AJ  
 Sample : M1775-02  
 Misc :  
 ALS Vial : 7 Sample Multiplier: 1

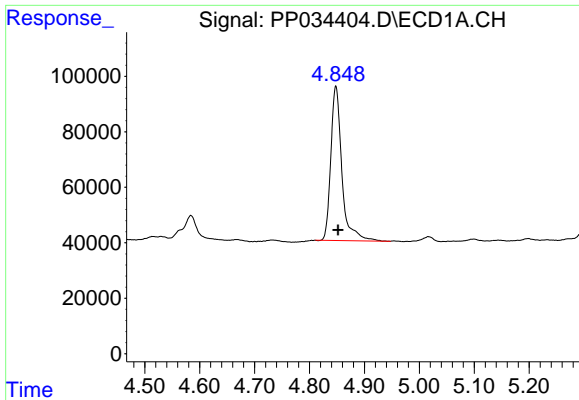
**Instrument :**  
 ECD\_P  
**ClientSampled :**  
 11979

**Manual Integrations**  
**APPROVED**  
 Ankita  
 4/1/2021 12:50:41 PM

Integration File signal 1: autoint1.e  
 Integration File signal 2: autoint2.e  
 Quant Time: Mar 27 06:47:43 2021  
 Quant Method : Z:\pestpcbsrv\HPCHEM1\ECD\_P\methods\PP031821.M  
 Quant Title : GC EXTRACTABLES  
 QLast Update : Sat Mar 20 01:42:16 2021  
 Response via : Initial Calibration  
 Integrator: ChemStation 6890 Scale Mode: Small noise peaks clipped

Volume Inj. : 2 µl  
 Signal #1 Phase : ZB-MR1 Signal #2 Phase: ZB-MR2  
 Signal #1 Info : 30Mx0.32mmx 0.50µ Signal #2 Info : 30M x 0.32mm x 0.25µm

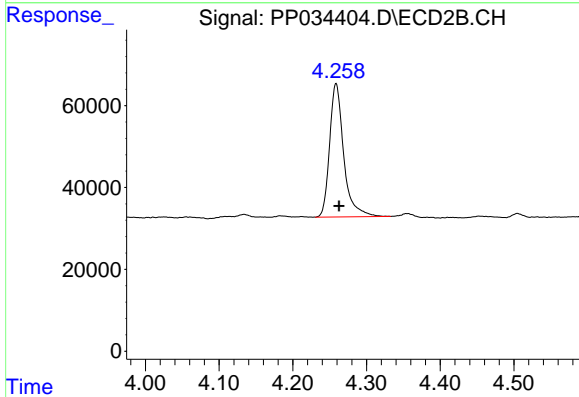




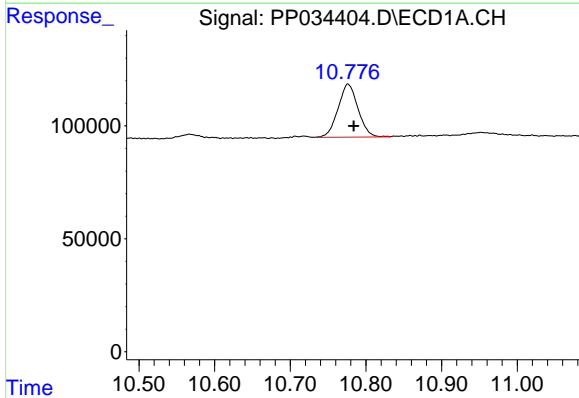
#1 Tetrachloro-m-xylene  
 R.T.: 4.848 min  
 Delta R.T.: -0.004 min  
 Response: 780457  
 Conc: 9.29 ng/ml

Instrument :  
 ECD\_P  
 ClientSampled :  
 11979

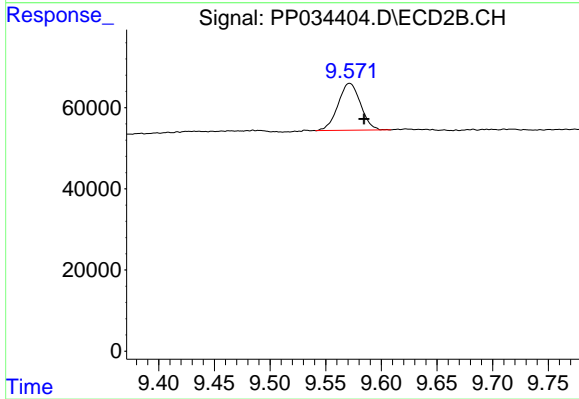
Manual Integrations  
 APPROVED  
 Ankita  
 4/1/2021 12:50:41 PM



#1 Tetrachloro-m-xylene  
 R.T.: 4.259 min  
 Delta R.T.: -0.004 min  
 Response: 432981  
 Conc: 9.78 ng/ml



#2 Decachlorobiphenyl  
 R.T.: 10.776 min  
 Delta R.T.: -0.008 min  
 Response: 430972  
 Conc: 5.49 ng/ml m



#2 Decachlorobiphenyl  
 R.T.: 9.572 min  
 Delta R.T.: -0.013 min  
 Response: 162583  
 Conc: 6.16 ng/ml