

Data Path : Z:\pestpcbsrv\HPCHEM1\ECD_P\Data\PP032621\
 Data File : PP034406.D
 Signal(s) : Signal #1: ECD1A.CH Signal #2: ECD2B.CH
 Acq On : 26 Mar 2021 10:48
 Operator : DD\AJ
 Sample : M1792-04
 Misc :
 ALS Vial : 9 Sample Multiplier: 1

Instrument :
 ECD_P
 ClientSampleId :
 TP-6

Manual Integrations
 APPROVED

Ankita
 3/30/2021 2:10:34 PM

Integration File signal 1: autoint1.e
 Integration File signal 2: autoint2.e
 Quant Time: Mar 27 00:03:37 2021
 Quant Method : Z:\pestpcbsrv\HPCHEM1\ECD_P\methods\PP031821.M
 Quant Title : GC EXTRACTABLES
 QLast Update : Sat Mar 20 01:42:16 2021
 Response via : Initial Calibration
 Integrator: ChemStation 6890 Scale Mode: Small noise peaks clipped

Volume Inj. : 2 µl
 Signal #1 Phase : ZB-MR2 Signal #2 Phase: ZB-MR2
 Signal #1 Info : 30Mx0.32mmx 0.50µ Signal #2 Info : 30M x 0.32mm x 0.25µm

Compound	RT#1	RT#2	Resp#1	Resp#2	ng/ml	ng/ml

System Monitoring Compounds						
1) SA Tetrachlo...	4.847	4.259	1498483	845475	17.838	19.106
2) SA Decachlor...	10.776	9.573	1115640	392603	14.216	14.877
Target Compounds						
16) L4 AR-1242-1	6.161	5.514	120529	58838	60.486	64.597
17) L4 AR-1242-2	6.184	5.535	182061	85203	61.232	64.911
18) L4 AR-1242-3	6.253	5.727	64669	55279	34.753	76.026 #
19) L4 AR-1242-4	6.356	5.820	91967	54099	61.006m	74.680
20) L4 AR-1242-5	7.136	6.384	96660	47741	63.403	60.828

(f)=RT Delta > 1/2 Window (#)=Amounts differ by > 25% (m)=manual int.

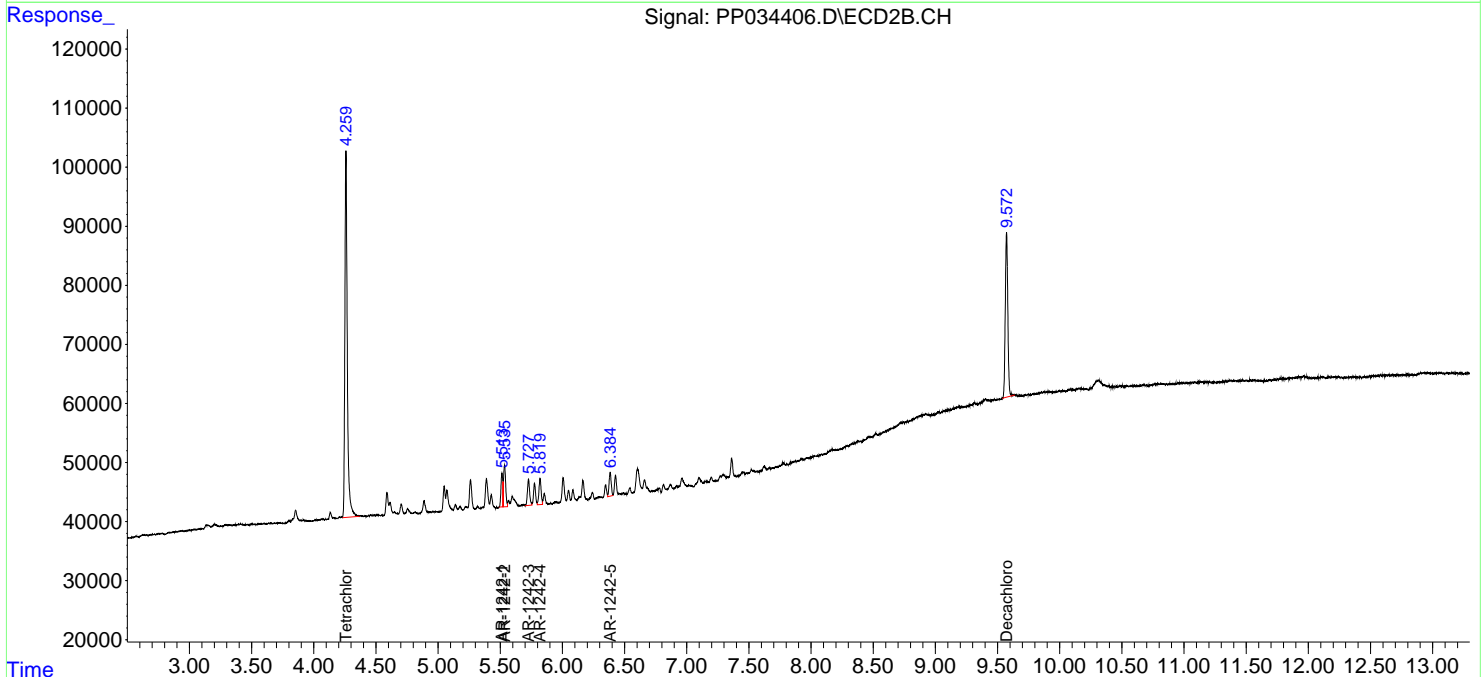
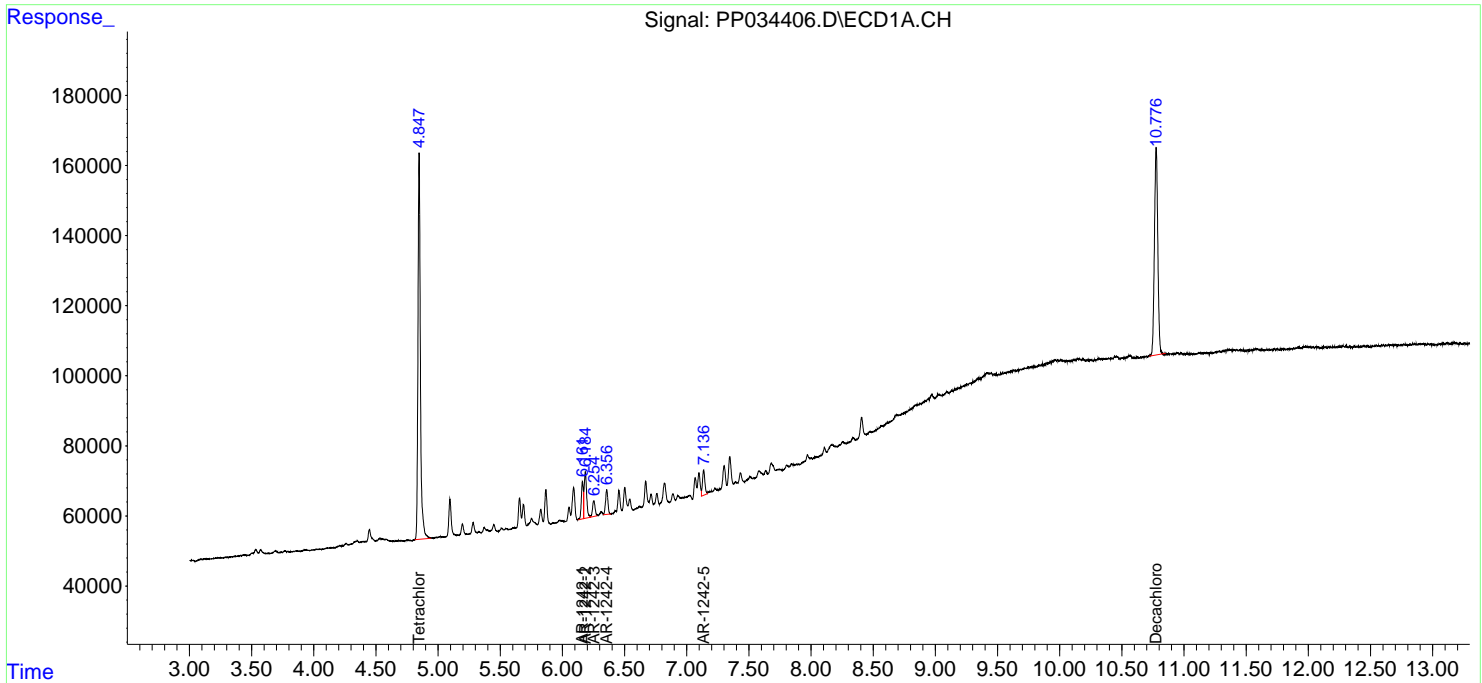
Data Path : Z:\pestpcbsrv\HPCHEM1\ECD_P\Data\PP032621\
 Data File : PP034406.D
 Signal(s) : Signal #1: ECD1A.CH Signal #2: ECD2B.CH
 Acq On : 26 Mar 2021 10:48
 Operator : DD\AJ
 Sample : M1792-04
 Misc :
 ALS Vial : 9 Sample Multiplier: 1

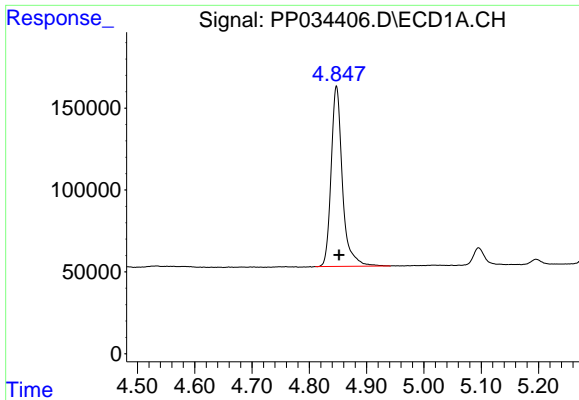
Instrument :
 ECD_P
 ClientSampled :
 TP-6

Manual Integrations
APPROVED
 Ankita
 3/30/2021 2:10:34 PM

Integration File signal 1: autoint1.e
 Integration File signal 2: autoint2.e
 Quant Time: Mar 27 00:03:37 2021
 Quant Method : Z:\pestpcbsrv\HPCHEM1\ECD_P\methods\PP031821.M
 Quant Title : GC EXTRACTABLES
 QLast Update : Sat Mar 20 01:42:16 2021
 Response via : Initial Calibration
 Integrator: ChemStation 6890 Scale Mode: Small noise peaks clipped

Volume Inj. : 2 µl
 Signal #1 Phase : ZB-MR1 Signal #2 Phase: ZB-MR2
 Signal #1 Info : 30Mx0.32mmx 0.50µ Signal #2 Info : 30M x 0.32mm x 0.25µm

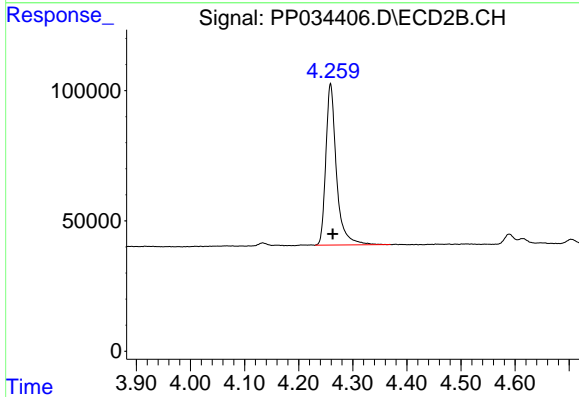




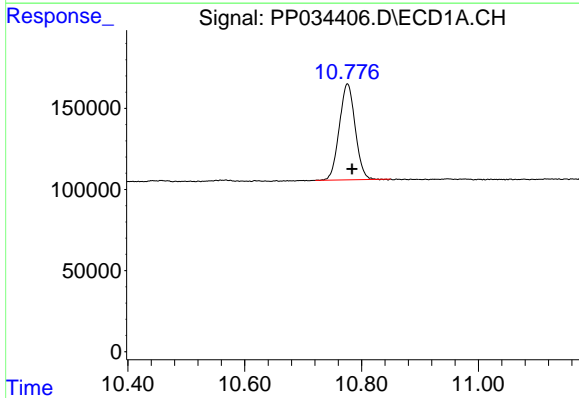
#1 Tetrachloro-m-xylene
 R.T.: 4.847 min
 Delta R.T.: -0.005 min
 Response: 1498483
 Conc: 17.84 ng/ml

Instrument :
 ECD_P
 ClientSampled :
 TP-6

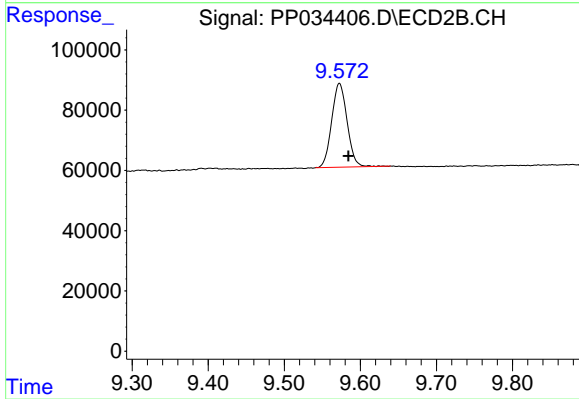
Manual Integrations
 APPROVED
 Ankita
 3/30/2021 2:10:34 PM



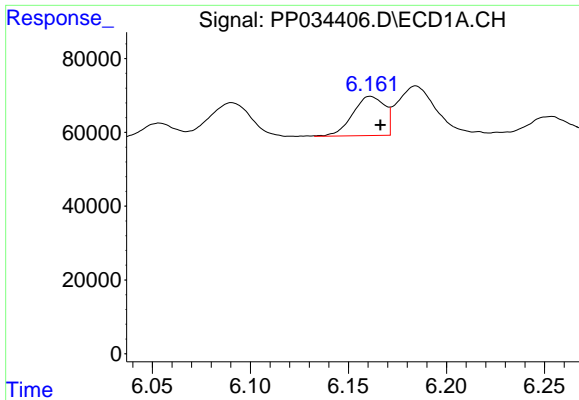
#1 Tetrachloro-m-xylene
 R.T.: 4.259 min
 Delta R.T.: -0.004 min
 Response: 845475
 Conc: 19.11 ng/ml



#2 Decachlorobiphenyl
 R.T.: 10.776 min
 Delta R.T.: -0.008 min
 Response: 1115640
 Conc: 14.22 ng/ml



#2 Decachlorobiphenyl
 R.T.: 9.573 min
 Delta R.T.: -0.012 min
 Response: 392603
 Conc: 14.88 ng/ml

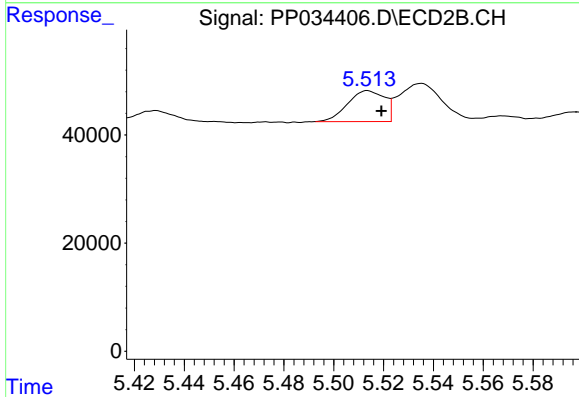


#16 AR-1242-1

R.T.: 6.161 min
 Delta R.T.: -0.005 min
 Response: 120529
 Conc: 60.49 ng/ml

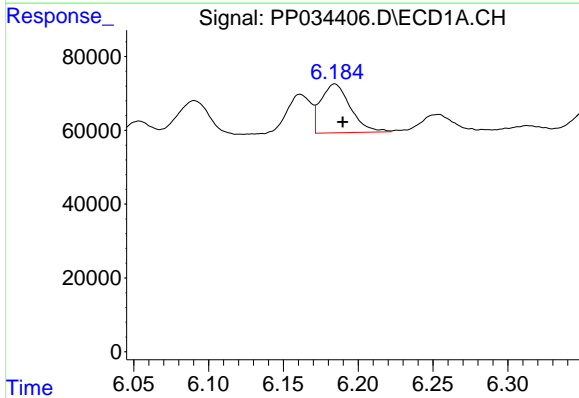
Instrument :
 ECD_P
 ClientSampled :
 TP-6

Manual Integrations
 APPROVED
 Ankita
 3/30/2021 2:10:34 PM



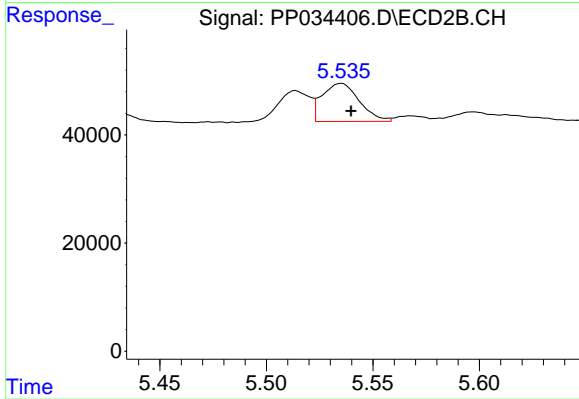
#16 AR-1242-1

R.T.: 5.514 min
 Delta R.T.: -0.006 min
 Response: 58838
 Conc: 64.60 ng/ml



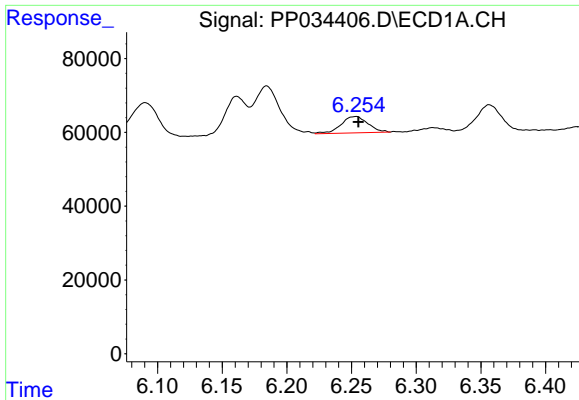
#17 AR-1242-2

R.T.: 6.184 min
 Delta R.T.: -0.005 min
 Response: 182061
 Conc: 61.23 ng/ml



#17 AR-1242-2

R.T.: 5.535 min
 Delta R.T.: -0.005 min
 Response: 85203
 Conc: 64.91 ng/ml

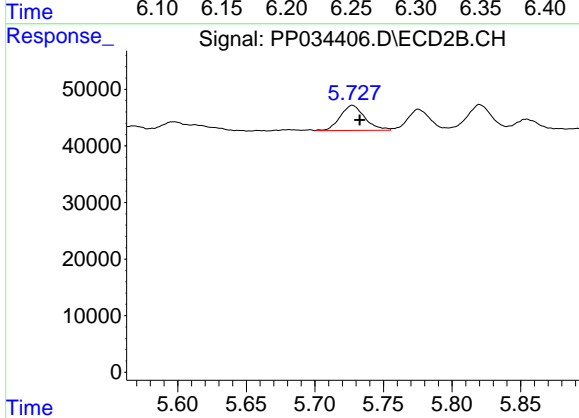


#18 AR-1242-3

R.T.: 6.253 min
 Delta R.T.: -0.002 min
 Response: 64669
 Conc: 34.75 ng/ml

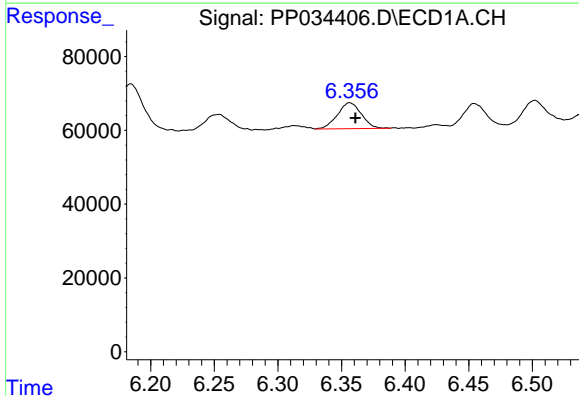
Instrument :
 ECD_P
 ClientSampled :
 TP-6

Manual Integrations
 APPROVED
 Ankita
 3/30/2021 2:10:34 PM



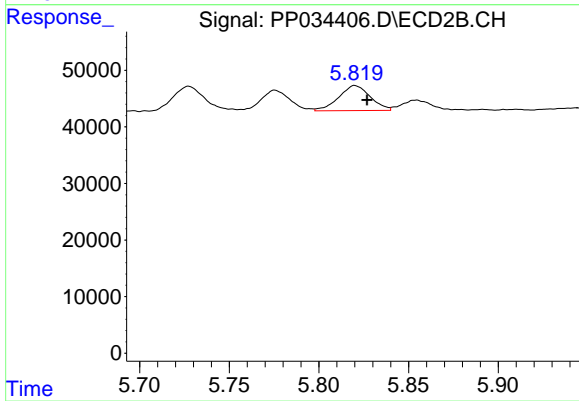
#18 AR-1242-3

R.T.: 5.727 min
 Delta R.T.: -0.005 min
 Response: 55279
 Conc: 76.03 ng/ml



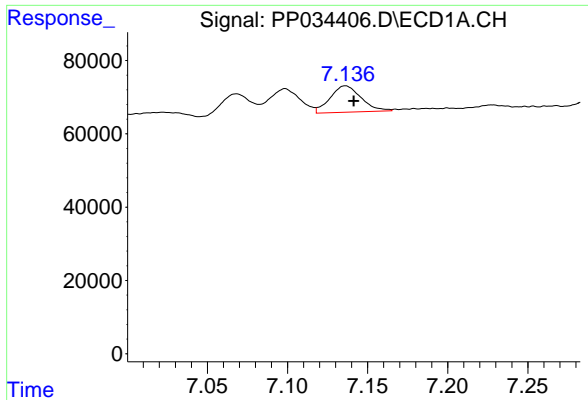
#19 AR-1242-4

R.T.: 6.356 min
 Delta R.T.: -0.005 min
 Response: 91967
 Conc: 61.01 ng/ml m



#19 AR-1242-4

R.T.: 5.820 min
 Delta R.T.: -0.007 min
 Response: 54099
 Conc: 74.68 ng/ml



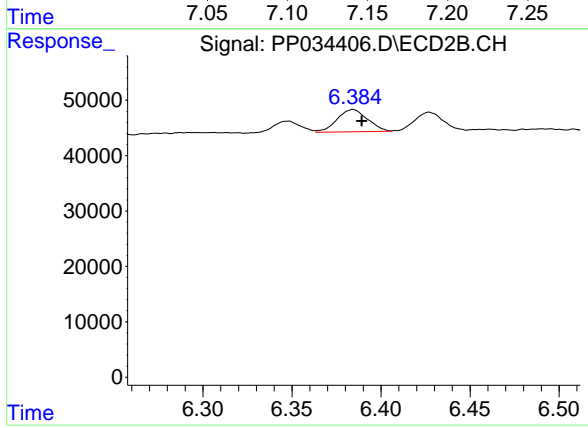
#20 AR-1242-5

R.T.: 7.136 min
Delta R.T.: -0.005 min
Response: 96660
Conc: 63.40 ng/ml

Instrument :
ECD_P
ClientSampled :
TP-6

Manual Integrations
APPROVED

Ankita
3/30/2021 2:10:34 PM



#20 AR-1242-5

R.T.: 6.384 min
Delta R.T.: -0.005 min
Response: 47741
Conc: 60.83 ng/ml