

Data Path : Z:\pestpcbsrv\HPCHEM1\ECD_P\Data\PP032625\
 Data File : PP070909.D
 Signal(s) : Signal #1: ECD1A.ch Signal #2: ECD2B.ch
 Acq On : 26 Mar 2025 20:01
 Operator : YP\AJ
 Sample : Q1644-02 10X
 Misc :
 ALS Vial : 25 Sample Multiplier: 1

Instrument :
 ECD_P
 ClientSampleId :
 12325-C

Integration File signal 1: autoint1.e
 Integration File signal 2: autoint2.e
 Quant Time: Mar 27 02:50:24 2025
 Quant Method : Z:\pestpcbsrv\HPCHEM1\ECD_P\methods\PP031125.M
 Quant Title : GC EXTRACTABLES
 QLast Update : Wed Mar 19 05:25:31 2025
 Response via : Initial Calibration
 Integrator: ChemStation

Volume Inj. : 2 µl
 Signal #1 Phase : ZB-MR1 Signal #2 Phase: ZB-MR2
 Signal #1 Info : 30Mx0.32mmx 0.50µ Signal #2 Info : 30M x 0.32mm x 0.25µm

Compound	RT#1	RT#2	Resp#1	Resp#2	ng/ml	ng/ml

System Monitoring Compounds						
1) SA Tetrachlo...	4.514	3.820	1916800	1829400	1.232	1.825 #
2) SA Decachlor...	10.233	8.862	1976114	1759077	1.860	1.798

Target Compounds

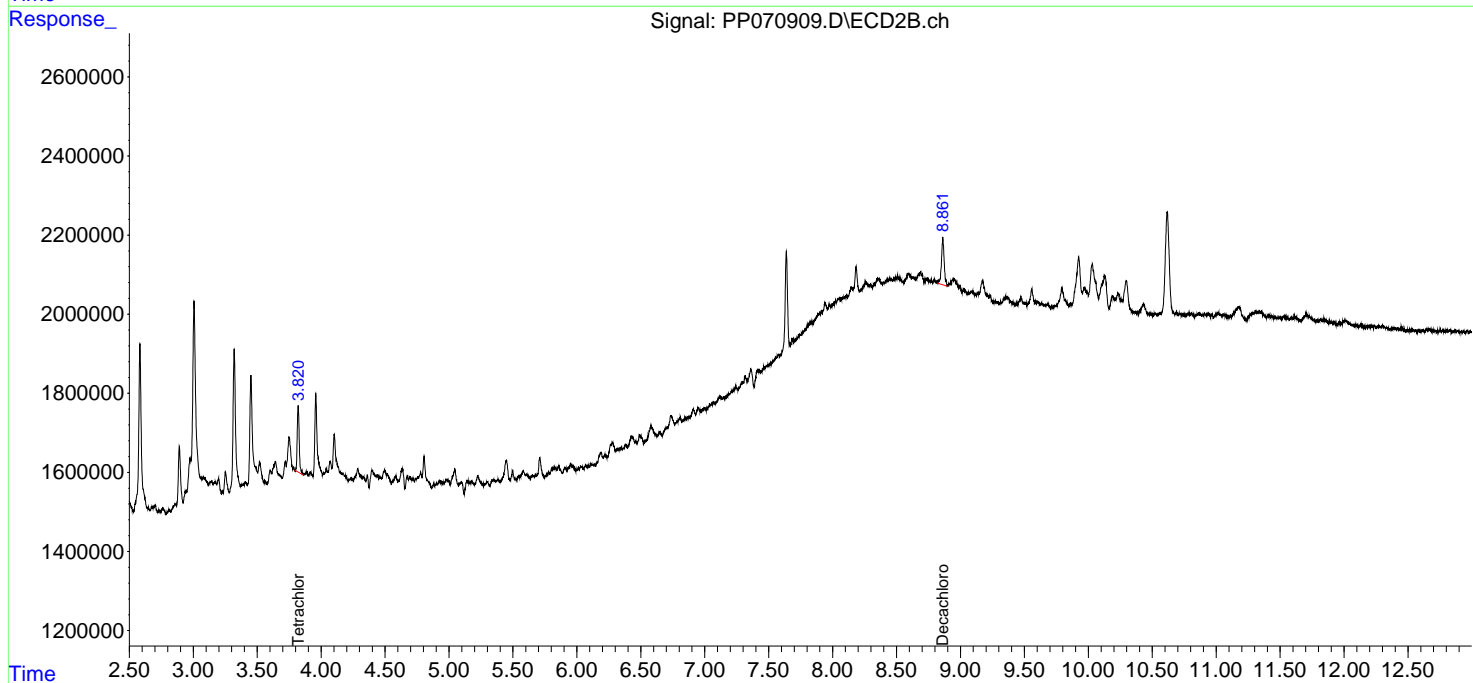
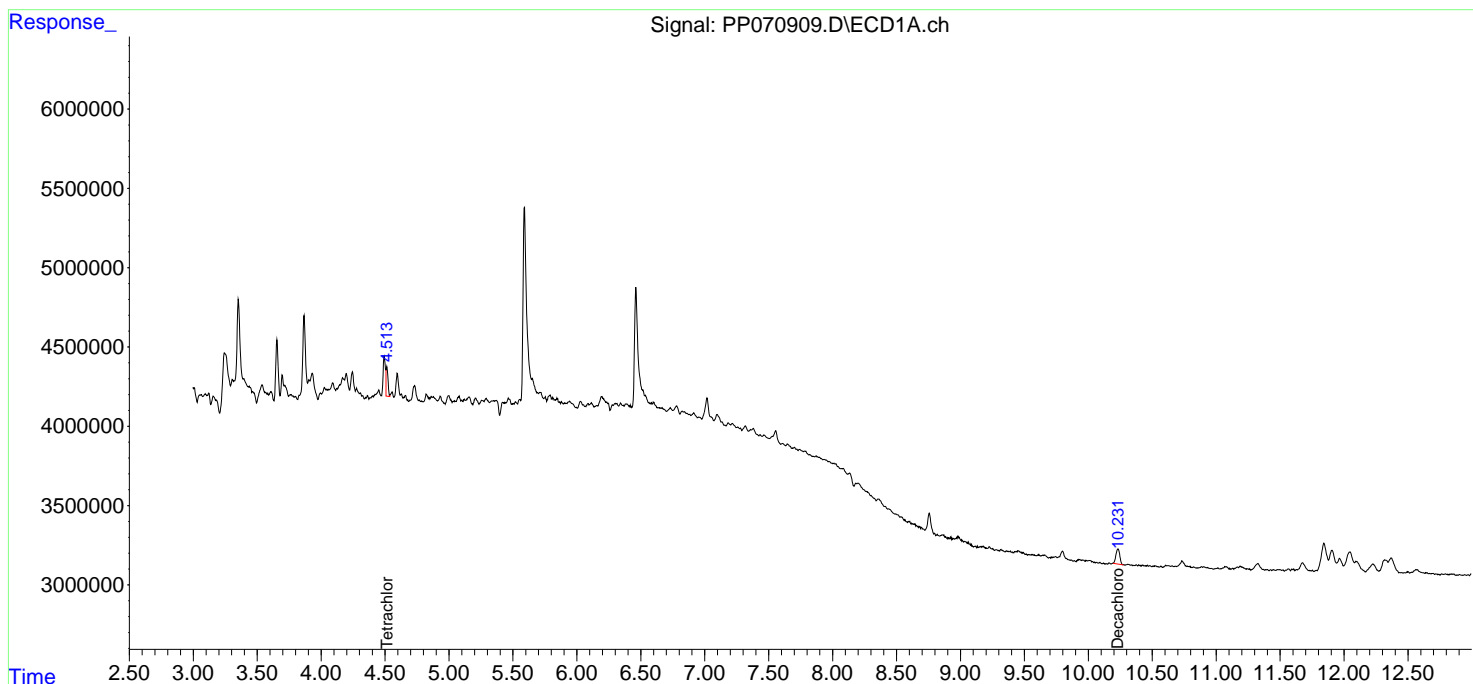
 (f)=RT Delta > 1/2 Window (#)=Amounts differ by > 25% (m)=manual int.

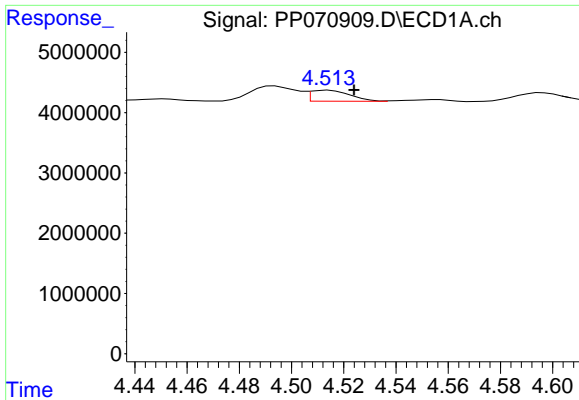
Data Path : Z:\pestpcbsrv\HPCHEM1\ECD_P\Data\PP032625\
 Data File : PP070909.D
 Signal(s) : Signal #1: ECD1A.ch Signal #2: ECD2B.ch
 Acq On : 26 Mar 2025 20:01
 Operator : YP\AJ
 Sample : Q1644-02 10X
 Misc :
 ALS Vial : 25 Sample Multiplier: 1

Instrument :
 ECD_P
 ClientSampleId :
 12325-C

Integration File signal 1: autoint1.e
 Integration File signal 2: autoint2.e
 Quant Time: Mar 27 02:50:24 2025
 Quant Method : Z:\pestpcbsrv\HPCHEM1\ECD_P\methods\PP031125.M
 Quant Title : GC EXTRACTABLES
 QLast Update : Wed Mar 19 05:25:31 2025
 Response via : Initial Calibration
 Integrator: ChemStation

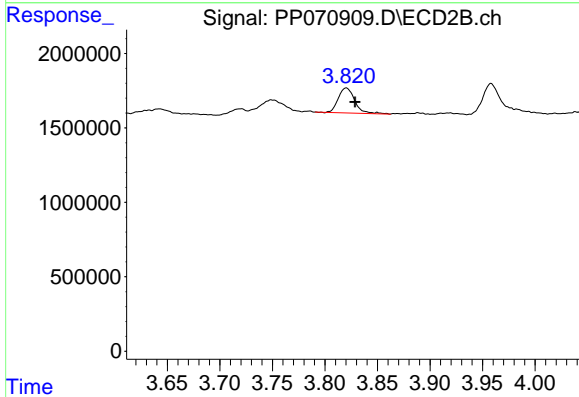
Volume Inj. : 2 µl
 Signal #1 Phase : ZB-MR1 Signal #2 Phase: ZB-MR2
 Signal #1 Info : 30Mx0.32mmx 0.50µ Signal #2 Info : 30M x 0.32mm x 0.25µm



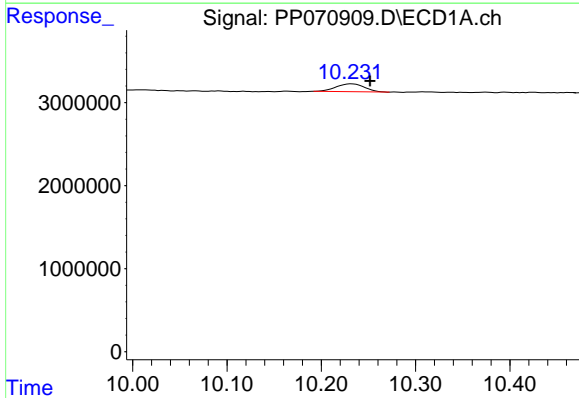


#1 Tetrachloro-m-xylene
 R.T.: 4.514 min
 Delta R.T.: -0.010 min
 Response: 1916800
 Conc: 1.23 ng/ml

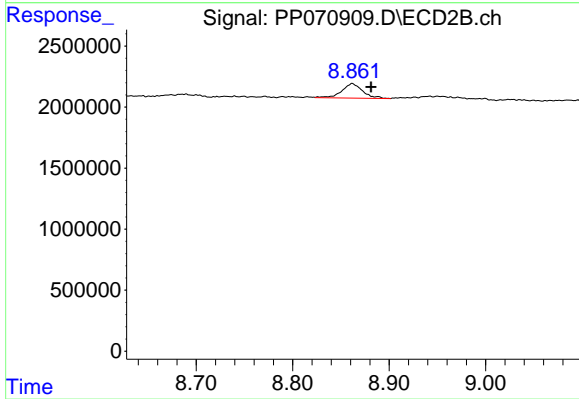
Instrument :
 ECD_P
 ClientSampleId :
 12325-C



#1 Tetrachloro-m-xylene
 R.T.: 3.820 min
 Delta R.T.: -0.008 min
 Response: 1829400
 Conc: 1.83 ng/ml



#2 Decachlorobiphenyl
 R.T.: 10.233 min
 Delta R.T.: -0.019 min
 Response: 1976114
 Conc: 1.86 ng/ml



#2 Decachlorobiphenyl
 R.T.: 8.862 min
 Delta R.T.: -0.019 min
 Response: 1759077
 Conc: 1.80 ng/ml