

Data Path : Z:\pestpcbsrv\HPCHEM1\ECD_P\Data\PP032819\
 Data File : PP029601.D
 Signal(s) : Signal #1: ECD1A.CH Signal #2: ECD2B.CH
 Acq On : 28 Mar 2019 14:23
 Operator : EI\MA
 Sample : K2097-08
 Misc : hexane
 ALS Vial : 5 Sample Multiplier: 1

Instrument :
 ECD_P
ClientSampleId :
 CS-21

Manual Integrations
APPROVED
 Sohil
 3/30/2019 10:06:05 AM

Integration File signal 1: autoint1.e
 Integration File signal 2: autoint2.e
 Quant Time: Mar 29 01:04:55 2019
 Quant Method : Z:\pestpcbsrv\HPCHEM1\ECD_P\methods\PP032119.M
 Quant Title : 8080.M
 QLast Update : Fri Mar 22 09:23:06 2019
 Response via : Initial Calibration
 Integrator: ChemStation 6890 Scale Mode: Large solvent peaks clipped

Volume Inj. : 2 µl
 Signal #1 Phase : ZB-CLPesticides-1 Signal #2 Phase: ZB-CLPesticides-2
 Signal #1 Info : 30M x 0.32mm x0.5 Signal #2 Info : 30M x 0.32mm x 0.25µm

Compound	RT#1	RT#2	Resp#1	Resp#2	ng/ml	ng/ml

System Monitoring Compounds						
4) S 2,4-DCAA	11.925	12.117	20240278	22505770	618.685	524.105m

Target Compounds

(f)=RT Delta > 1/2 Window (#)=Amounts differ by > 25% (m)=manual int.

Data Path : Z:\pestpcbsrv\HPCHEM1\ECD_P\Data\PP032819\
 Data File : PP029601.D
 Signal(s) : Signal #1: ECD1A.CH Signal #2: ECD2B.CH
 Acq On : 28 Mar 2019 14:23
 Operator : EI\MA
 Sample : K2097-08
 Misc : hexane
 ALS Vial : 5 Sample Multiplier: 1

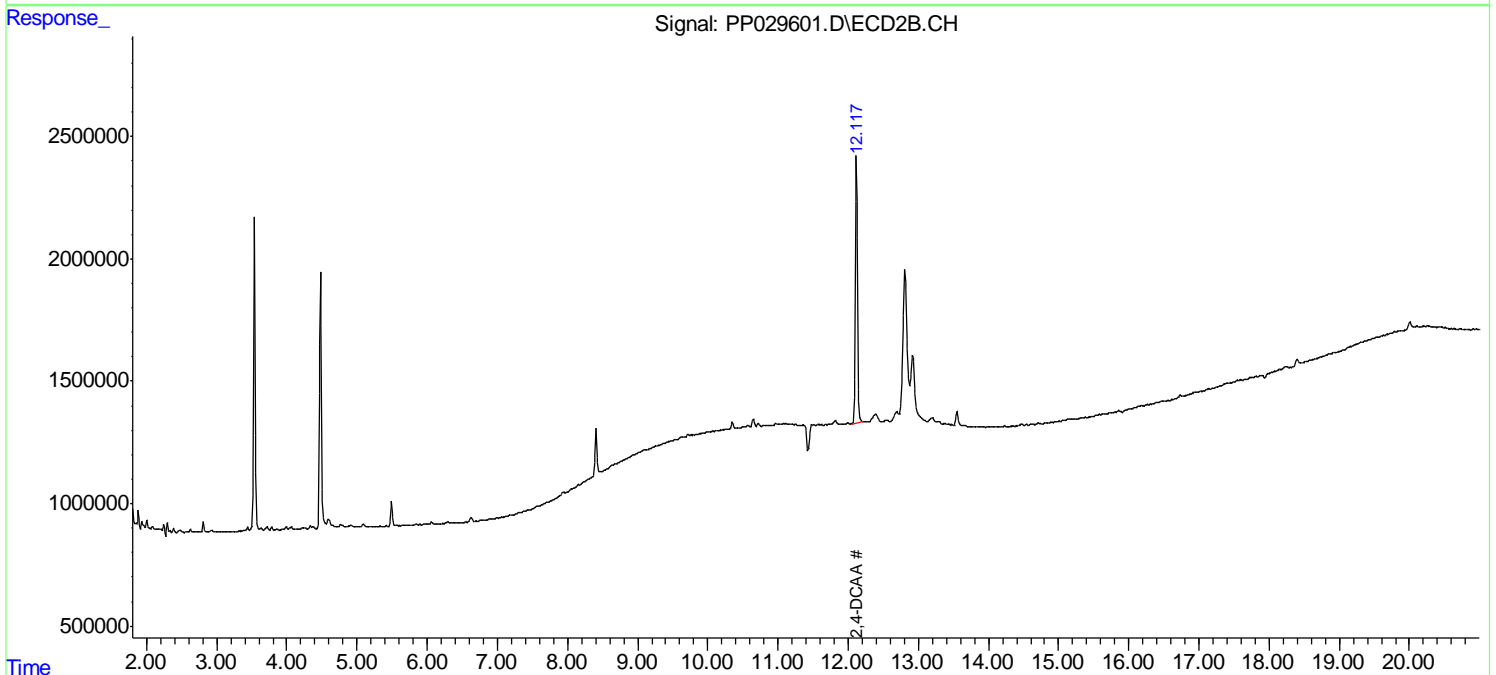
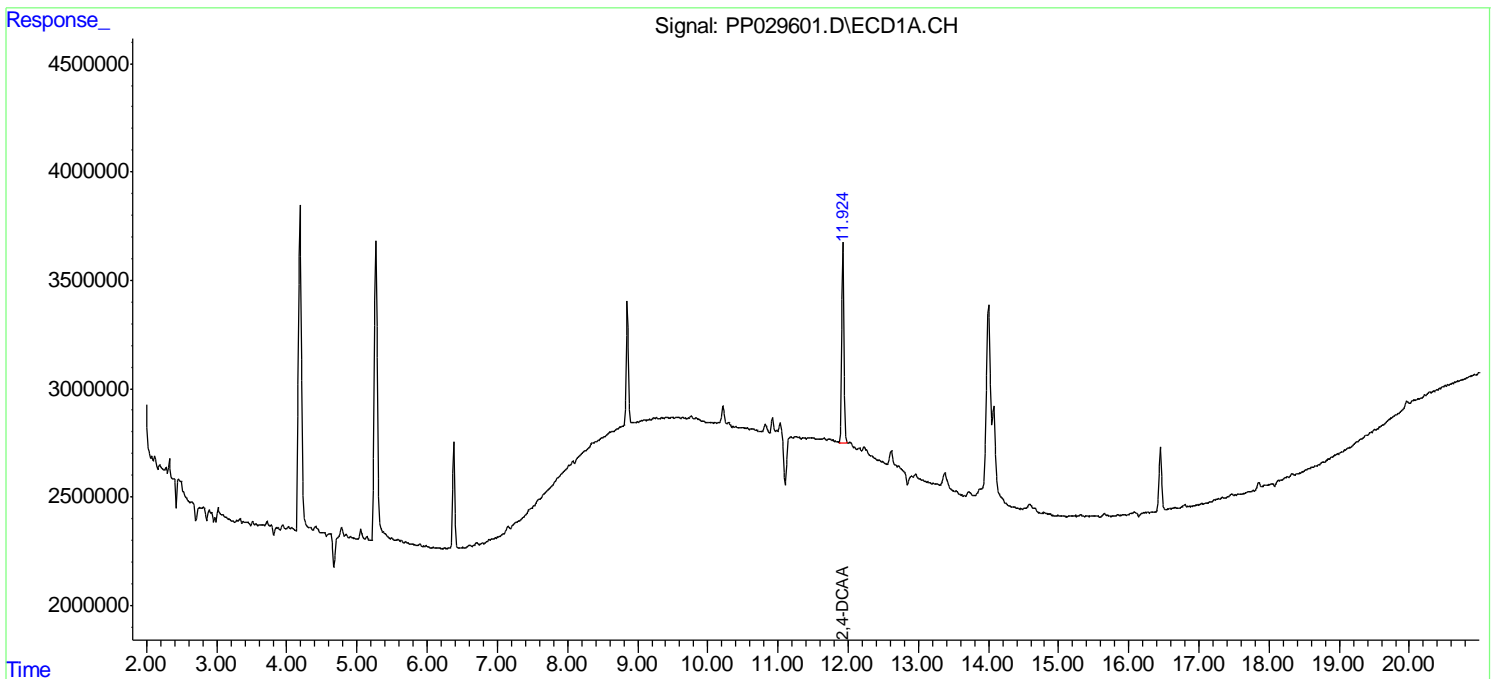
Instrument :
 ECD_P
 ClientSampled :
 CS-21

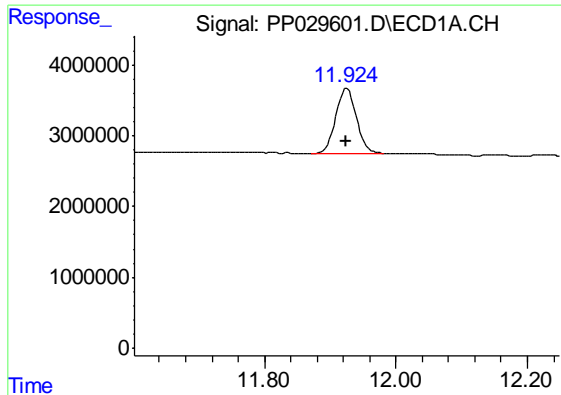
Manual Integrations
 APPROVED

Sohil
 3/30/2019 10:06:05 AM

Integration File signal 1: autoint1.e
 Integration File signal 2: autoint2.e
 Quant Time: Mar 29 01:04:55 2019
 Quant Method : Z:\pestpcbsrv\HPCHEM1\ECD_P\methods\PP032119.M
 Quant Title : 8080.M
 QLast Update : Fri Mar 22 09:23:06 2019
 Response via : Initial Calibration
 Integrator: ChemStation 6890 Scale Mode: Large solvent peaks clipped

Volume Inj. : 2 µl
 Signal #1 Phase : ZB-CLPesticides-1 Signal #2 Phase: ZB-CLPesticides-2
 Signal #1 Info : 30M x 0.32mm x0.5 Signal #2 Info : 30M x 0.32mm x 0.25µm





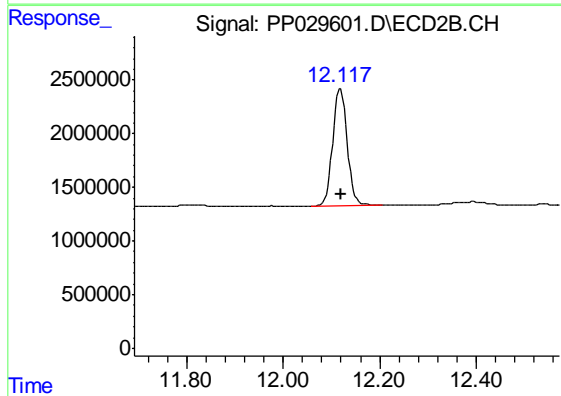
#4 2,4-DCAA

R.T.: 11.925 min
Delta R.T.: 0.000 min
Response: 20240278
Conc: 618.68 ng/ml

Instrument :
ECD_P
ClientSampled :
CS-21

Manual Integrations
APPROVED

Sohil
3/30/2019 10:06:05 AM



#4 2,4-DCAA

R.T.: 12.117 min
Delta R.T.: -0.004 min
Response: 22505770
Conc: 524.10 ng/ml m