

Data Path : Z:\pestpcbsrv\HPCHEM1\ECD_P\Data\PP032824\
 Data File : PP063885.D
 Signal(s) : Signal #1: ECD1A.ch Signal #2: ECD2B.ch
 Acq On : 28 Mar 2024 10:00
 Operator : YP\AJ
 Sample : AR1248CCC500
 Misc :
 ALS Vial : 5 Sample Multiplier: 1

Instrument :
 ECD_P
 ClientSampleId :

Integration File signal 1: autoint1.e
 Integration File signal 2: autoint2.e
 Quant Time: Mar 28 14:14:31 2024
 Quant Method : Z:\pestpcbsrv\HPCHEM1\ECD_P\methods\PP031924.M
 Quant Title : GC EXTRACTABLES
 QLast Update : Tue Mar 19 06:23:02 2024
 Response via : Initial Calibration
 Integrator: ChemStation

Volume Inj. : 2 µl
 Signal #1 Phase : ZB-MR1 Signal #2 Phase: ZB-MR2
 Signal #1 Info : 30Mx0.32mmx 0.50µ Signal #2 Info : 30M x 0.32mm x 0.25µm

Compound	RT#1	RT#2	Resp#1	Resp#2	ng/ml	ng/ml

System Monitoring Compounds						
1) SA Tetrachlo...	4.487	3.637	114.9E6	120.2E6	48.153	50.359
2) SA Decachlor...	10.356	8.670	126.2E6	120.8E6	49.700	44.689
Target Compounds						
3) L1 AR-1016-1	5.669	4.728	24867902	23600860	298.422	285.706
4) L1 AR-1016-2	5.692	4.747	29259562	23417846	241.899	202.005
5) L1 AR-1016-3	5.755	4.924	15103363	17120214	189.119	275.068 #
6) L1 AR-1016-4	5.853	4.966	16695634	36108749	266.732	658.883 #
7) L1 AR-1016-5	6.151	5.180	41361633	43299765	641.917	622.902
9) L2 AR-1221-2	4.797	3.938	2088415	1803280	99.296	87.991
10) L2 AR-1221-3	4.862	4.015	2047340	2082722	33.892	33.514
11) L3 AR-1232-1	4.862	4.015	2047340	2082722	37.834	37.783
12) L3 AR-1232-2	5.398	4.747	11458649	23417846	366.937	455.453
13) L3 AR-1232-3	5.692	4.924	29259562	17120214	541.020	617.267
14) L3 AR-1232-4	5.853	5.008	16695634	38140333	600.266	1390.294 #
15) L3 AR-1232-5	5.945	5.180	37673442	43299765	1613.263	1467.445
16) L4 AR-1242-1	5.669	4.728	24867902	23600860	412.285	400.355
17) L4 AR-1242-2	5.692	4.747	29259562	23417846	340.734	286.154
18) L4 AR-1242-3	5.755	4.924	15103363	17120214	268.709	381.448 #
19) L4 AR-1242-4	5.853	5.008	16695634	38140333	371.056	768.435 #
20) L4 AR-1242-5	6.597	5.533	43987676	59663653	982.221	1022.365
21) L5 AR-1248-1	5.669	4.728	24867902	23600860	532.296	529.856
22) L5 AR-1248-2	5.945	4.966	37673442	36108749	519.076	508.762
23) L5 AR-1248-3	6.151	5.008	41361633	38140333	512.255	515.408
24) L5 AR-1248-4	6.558	5.180	43655110	43299765	533.846	500.043
25) L5 AR-1248-5	6.597	5.574	43987676	40700340	539.352	542.109
26) L6 AR-1254-1	6.531	5.533	34580913	59663653	380.355	482.822 #
27) L6 AR-1254-2	6.755	5.682	45418573	19703247	331.302	171.661 #
28) L6 AR-1254-3	7.122	6.087	26478318	29390954	189.204	163.338
29) L6 AR-1254-4	7.410	6.316	16919519	19260230	185.708	209.010
30) L6 AR-1254-5	7.831	6.735	4985824	5712243	42.405	34.221
31) L7 AR-1260-1	7.289	6.232	3264010	14609156	25.843	102.228 #
32) L7 AR-1260-2	7.544	6.407	4544858	3030786	31.836	17.929 #
33) L7 AR-1260-3	0.000	6.560	0	3329608	N.D.	20.716 #
34) L7 AR-1260-4	8.123f	7.035	2250839	402640	18.710	3.303 #
35) L7 AR-1260-5	0.000	7.277	0	811375	N.D.	3.041 #
36) L8 AR-1262-1	0.000	6.806f	0	333858	N.D.	4.945 #
37) L8 AR-1262-2	0.000	7.035	0	402640	N.D.	2.519 #
39) L8 AR-1262-4	0.000	7.625	0	812000	N.D.	3.799 #
42) L9 AR-1268-2	0.000	7.625	0	812000	N.D.	2.362 #
43) L9 AR-1268-3	0.000	7.836	0	219392	N.D.	0.730 #
45) L9 AR-1268-5	0.000	8.415	0	642216	N.D.	0.775 #

Data Path : Z:\pestpcbsrv\HPCHEM1\ECD_P\Data\PP032824\
Data File : PP063885.D
Signal(s) : Signal #1: ECD1A.ch Signal #2: ECD2B.ch
Acq On : 28 Mar 2024 10:00
Operator : YP\AJ
Sample : AR1248CCC500
Misc :
ALS Vial : 5 Sample Multiplier: 1

Instrument :
ECD_P
ClientSampleId :

Integration File signal 1: autoint1.e
Integration File signal 2: autoint2.e
Quant Time: Mar 28 14:14:31 2024
Quant Method : Z:\pestpcbsrv\HPCHEM1\ECD_P\methods\PP031924.M
Quant Title : GC EXTRACTABLES
QLast Update : Tue Mar 19 06:23:02 2024
Response via : Initial Calibration
Integrator: ChemStation

Volume Inj. : 2 µl
Signal #1 Phase : ZB-MR1 Signal #2 Phase: ZB-MR2
Signal #1 Info : 30Mx0.32mmx 0.50µ Signal #2 Info : 30M x 0.32mm x 0.25µm

Compound	RT#1	RT#2	Resp#1	Resp#2	ng/ml	ng/ml
----------	------	------	--------	--------	-------	-------

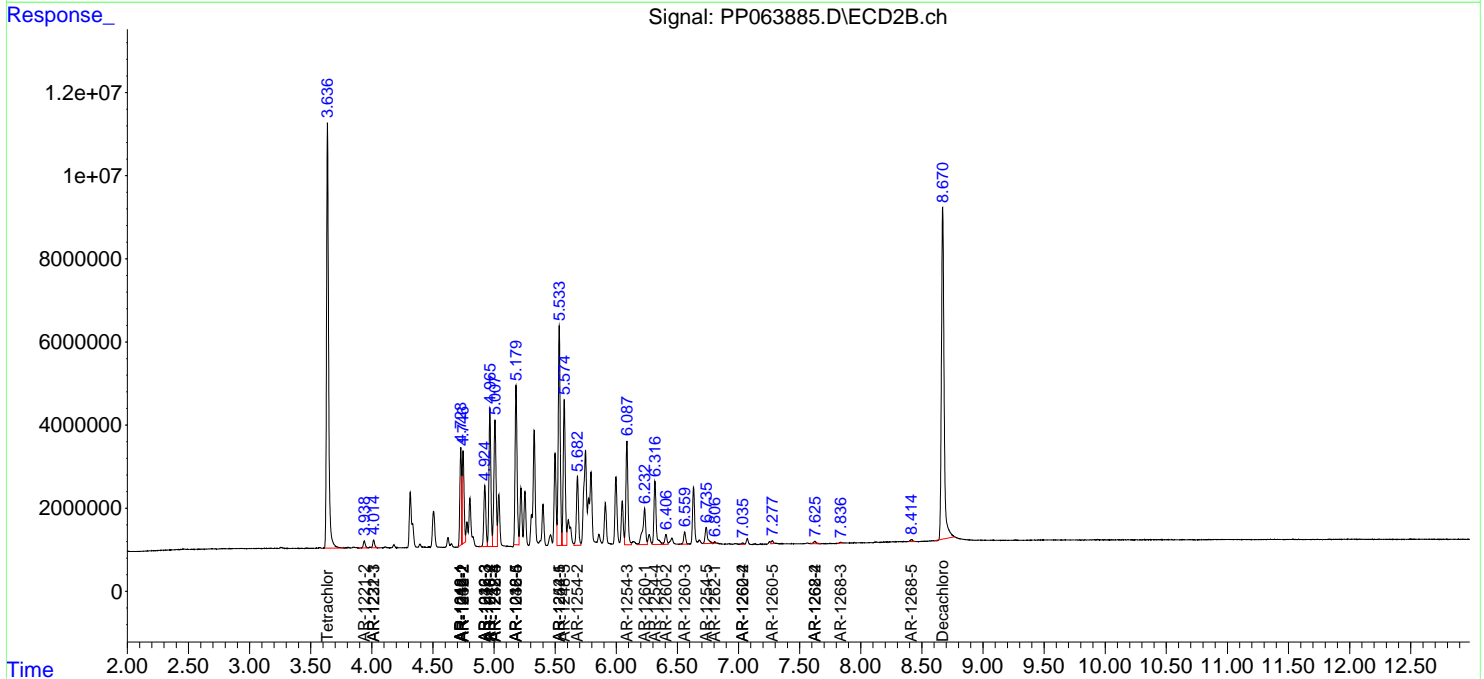
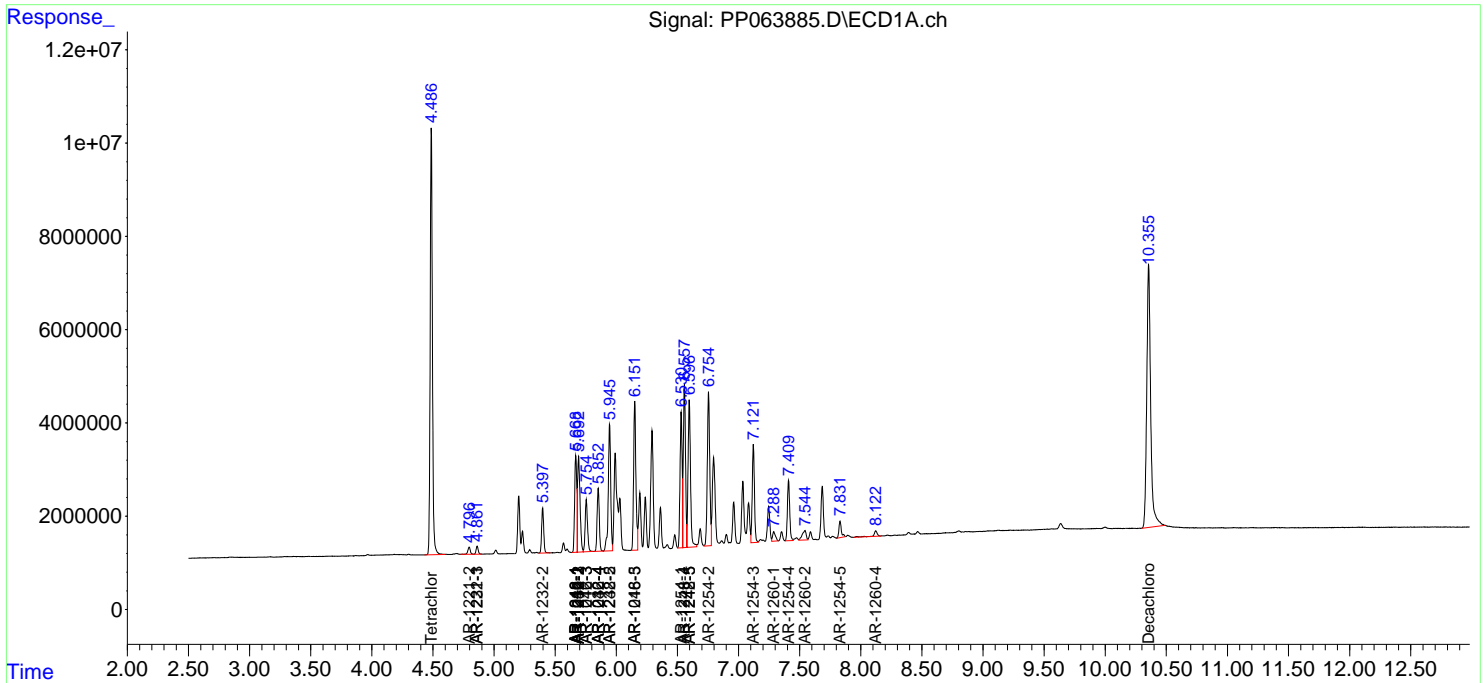
(f)=RT Delta > 1/2 Window (#)=Amounts differ by > 25% (m)=manual int.

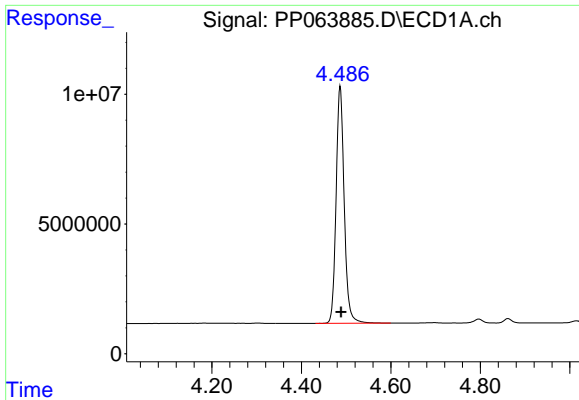
Data Path : Z:\pestpcbsrv\HPCHEM1\ECD_P\Data\PP032824\
 Data File : PP063885.D
 Signal(s) : Signal #1: ECD1A.ch Signal #2: ECD2B.ch
 Acq On : 28 Mar 2024 10:00
 Operator : YP\AJ
 Sample : AR1248CCC500
 Misc :
 ALS Vial : 5 Sample Multiplier: 1

Instrument :
 ECD_P
 ClientSampleId :

Integration File signal 1: autoint1.e
 Integration File signal 2: autoint2.e
 Quant Time: Mar 28 14:14:31 2024
 Quant Method : Z:\pestpcbsrv\HPCHEM1\ECD_P\methods\PP031924.M
 Quant Title : GC EXTRACTABLES
 QLast Update : Tue Mar 19 06:23:02 2024
 Response via : Initial Calibration
 Integrator: ChemStation

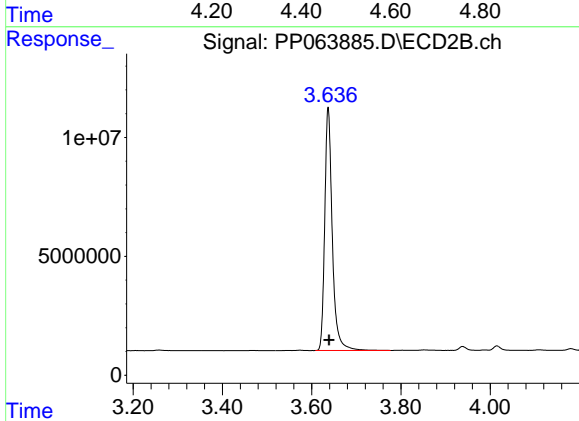
Volume Inj. : 2 µl
 Signal #1 Phase : ZB-MR1 Signal #2 Phase: ZB-MR2
 Signal #1 Info : 30Mx0.32mmx 0.50µ Signal #2 Info : 30M x 0.32mm x 0.25µm



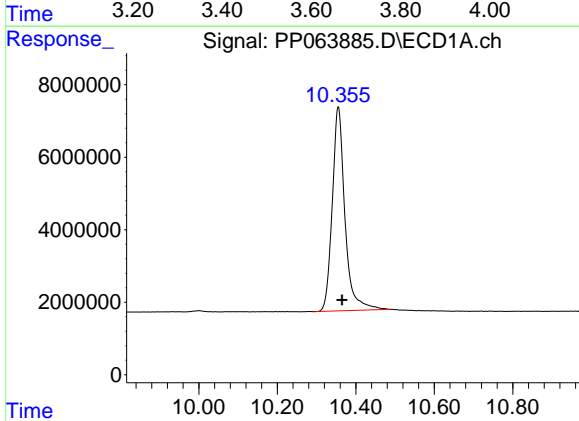


#1 Tetrachloro-m-xylene
R.T.: 4.487 min
Delta R.T.: -0.002 min
Response: 114900468
Conc: 48.15 ng/ml

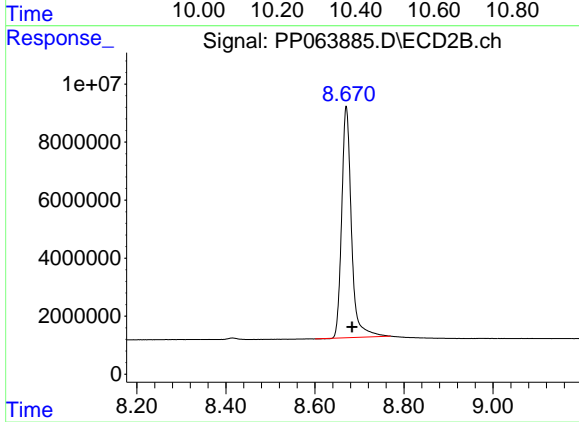
Instrument :
ECD_P
ClientSampleId :



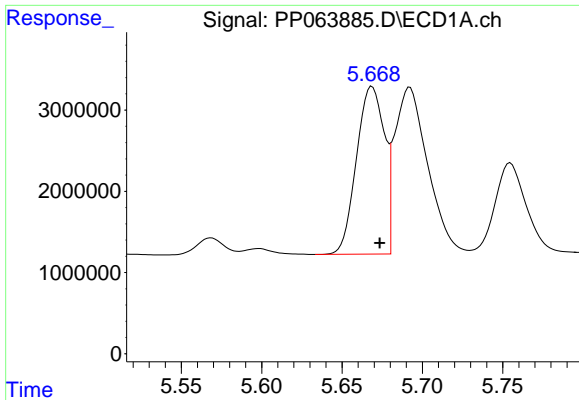
#1 Tetrachloro-m-xylene
R.T.: 3.637 min
Delta R.T.: -0.002 min
Response: 120233856
Conc: 50.36 ng/ml



#2 Decachlorobiphenyl
R.T.: 10.356 min
Delta R.T.: -0.010 min
Response: 126187644
Conc: 49.70 ng/ml



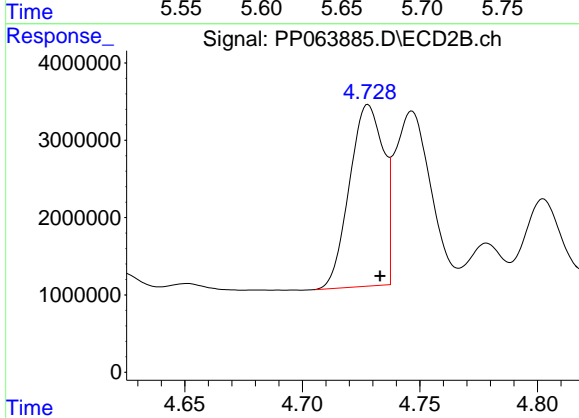
#2 Decachlorobiphenyl
R.T.: 8.670 min
Delta R.T.: -0.013 min
Response: 120771375
Conc: 44.69 ng/ml



#3 AR-1016-1

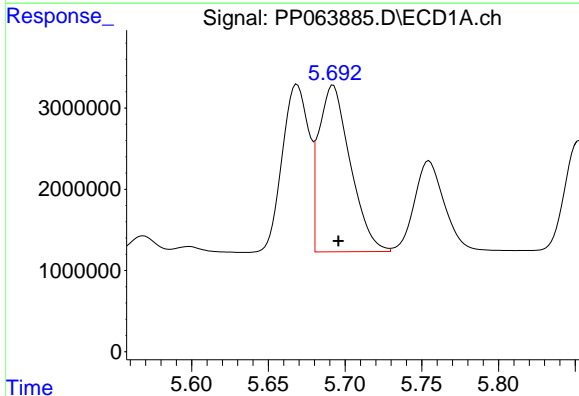
R.T.: 5.669 min
 Delta R.T.: -0.005 min
 Response: 24867902
 Conc: 298.42 ng/ml

Instrument :
 ECD_P
 ClientSampleId :



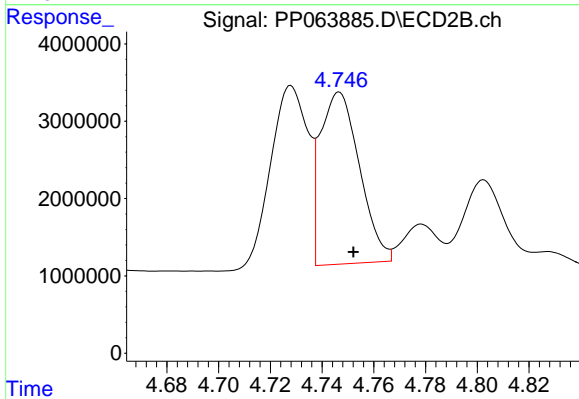
#3 AR-1016-1

R.T.: 4.728 min
 Delta R.T.: -0.005 min
 Response: 23600860
 Conc: 285.71 ng/ml



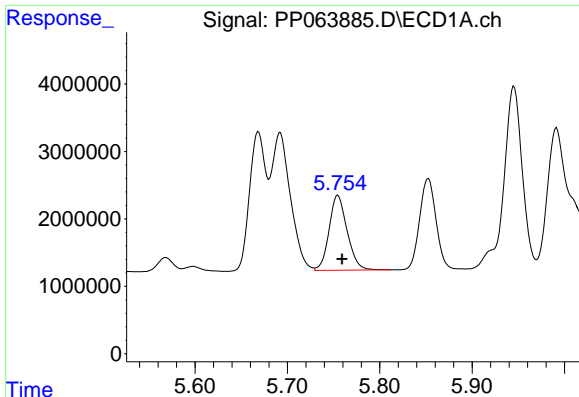
#4 AR-1016-2

R.T.: 5.692 min
 Delta R.T.: -0.003 min
 Response: 29259562
 Conc: 241.90 ng/ml



#4 AR-1016-2

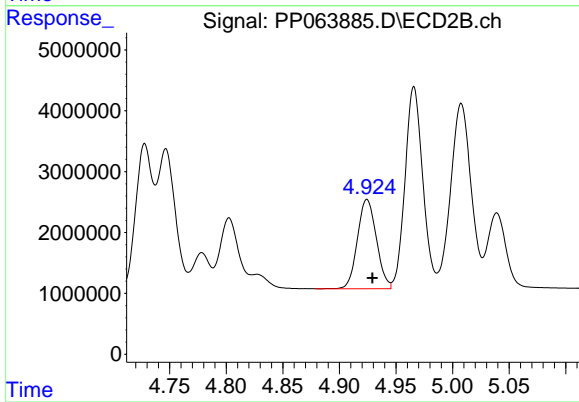
R.T.: 4.747 min
 Delta R.T.: -0.005 min
 Response: 23417846
 Conc: 202.00 ng/ml



#5 AR-1016-3

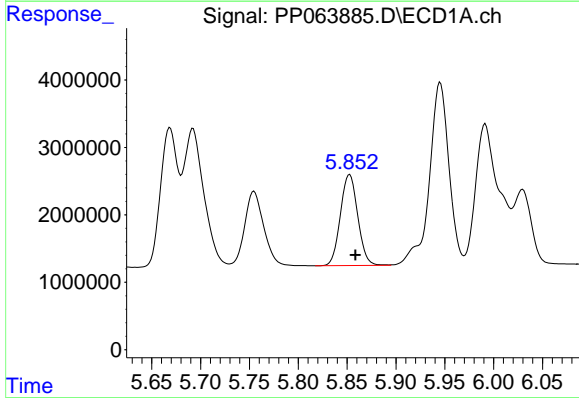
R.T.: 5.755 min
 Delta R.T.: -0.005 min
 Response: 15103363
 Conc: 189.12 ng/ml

Instrument :
 ECD_P
 ClientSampleId :



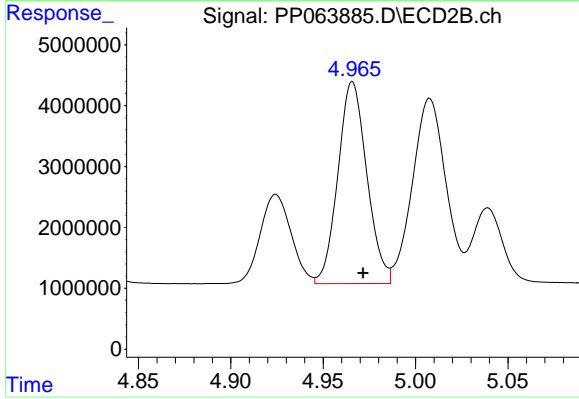
#5 AR-1016-3

R.T.: 4.924 min
 Delta R.T.: -0.005 min
 Response: 17120214
 Conc: 275.07 ng/ml



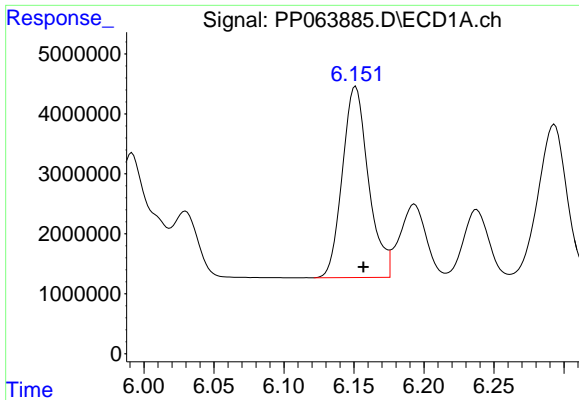
#6 AR-1016-4

R.T.: 5.853 min
 Delta R.T.: -0.006 min
 Response: 16695634
 Conc: 266.73 ng/ml



#6 AR-1016-4

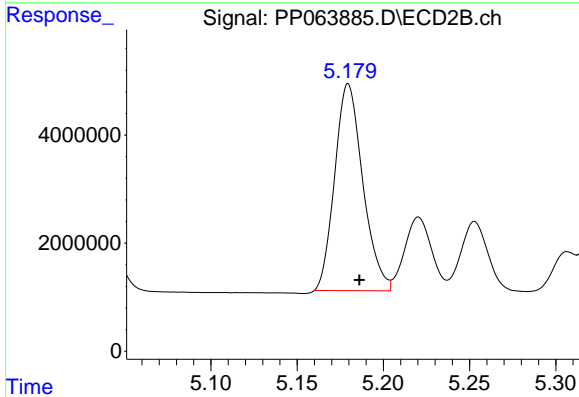
R.T.: 4.966 min
 Delta R.T.: -0.006 min
 Response: 36108749
 Conc: 658.88 ng/ml



#7 AR-1016-5

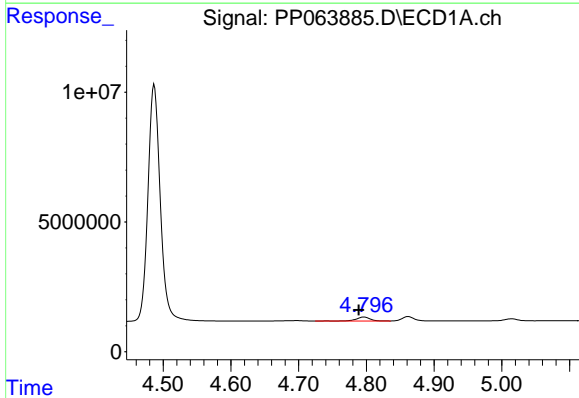
R.T.: 6.151 min
 Delta R.T.: -0.006 min
 Response: 41361633
 Conc: 641.92 ng/ml

Instrument :
 ECD_P
 ClientSampleId :



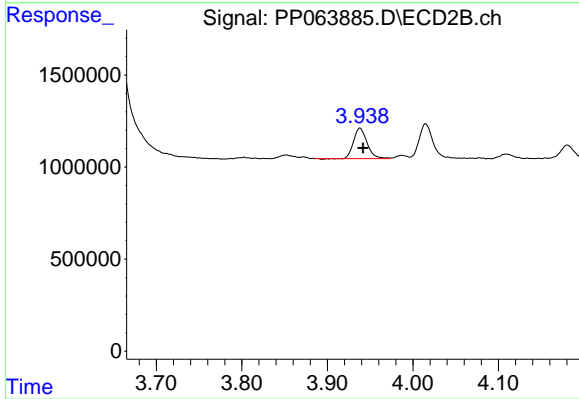
#7 AR-1016-5

R.T.: 5.180 min
 Delta R.T.: -0.006 min
 Response: 43299765
 Conc: 622.90 ng/ml



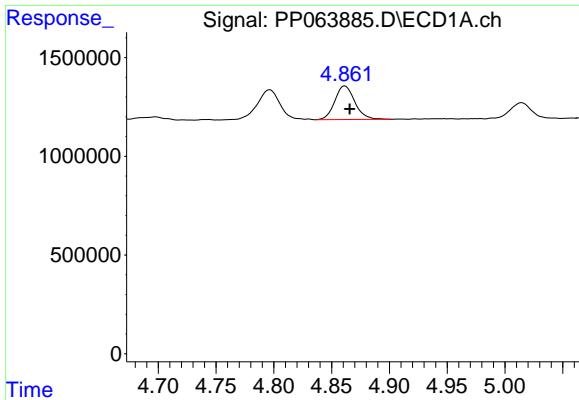
#9 AR-1221-2

R.T.: 4.797 min
 Delta R.T.: 0.008 min
 Response: 2088415
 Conc: 99.30 ng/ml



#9 AR-1221-2

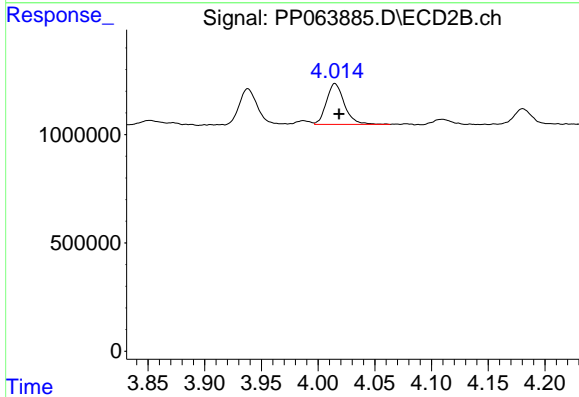
R.T.: 3.938 min
 Delta R.T.: -0.004 min
 Response: 1803280
 Conc: 87.99 ng/ml



#10 AR-1221-3

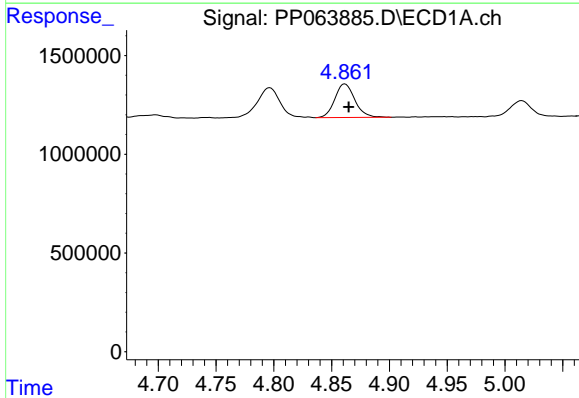
R.T.: 4.862 min
 Delta R.T.: -0.004 min
 Response: 2047340
 Conc: 33.89 ng/ml

Instrument :
 ECD_P
 ClientSampleId :



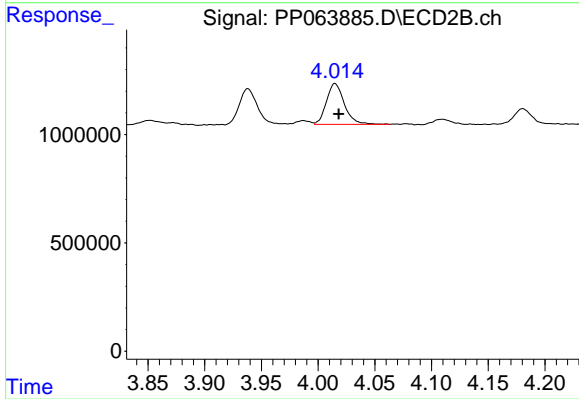
#10 AR-1221-3

R.T.: 4.015 min
 Delta R.T.: -0.004 min
 Response: 2082722
 Conc: 33.51 ng/ml



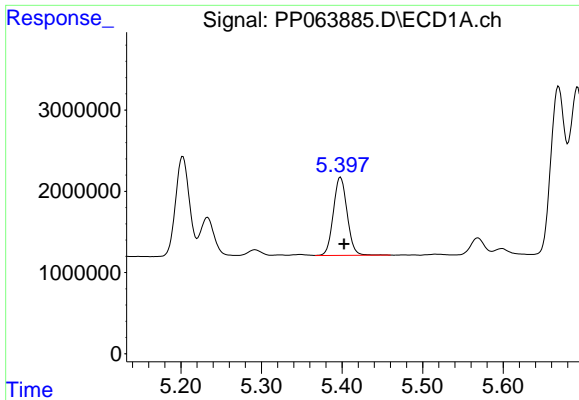
#11 AR-1232-1

R.T.: 4.862 min
 Delta R.T.: -0.003 min
 Response: 2047340
 Conc: 37.83 ng/ml



#11 AR-1232-1

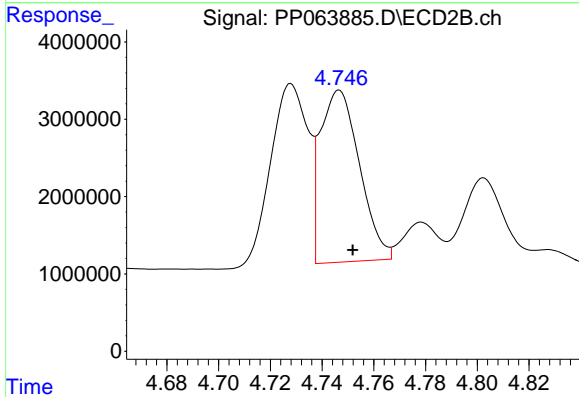
R.T.: 4.015 min
 Delta R.T.: -0.003 min
 Response: 2082722
 Conc: 37.78 ng/ml



#12 AR-1232-2

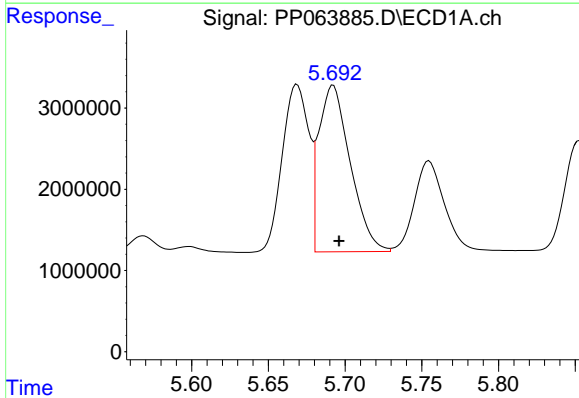
R.T.: 5.398 min
 Delta R.T.: -0.004 min
 Response: 11458649
 Conc: 366.94 ng/ml

Instrument :
 ECD_P
 ClientSampleId :



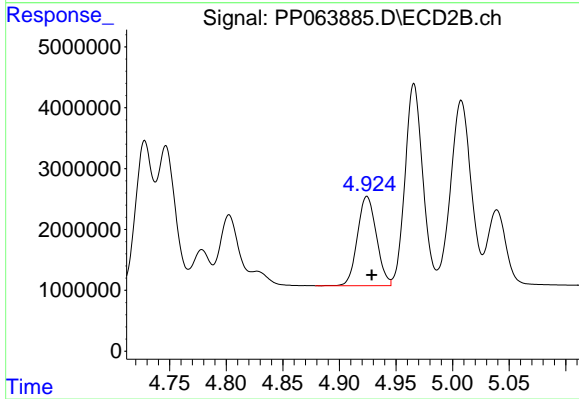
#12 AR-1232-2

R.T.: 4.747 min
 Delta R.T.: -0.005 min
 Response: 23417846
 Conc: 455.45 ng/ml



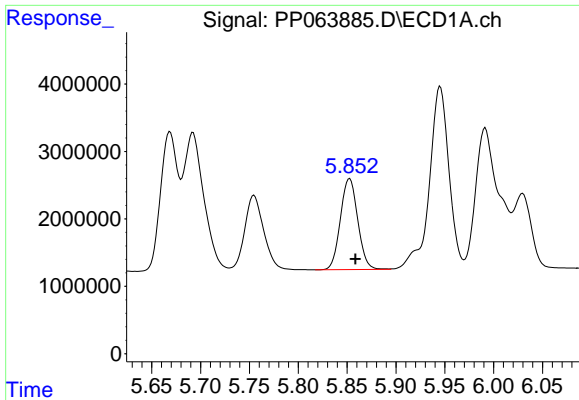
#13 AR-1232-3

R.T.: 5.692 min
 Delta R.T.: -0.004 min
 Response: 29259562
 Conc: 541.02 ng/ml



#13 AR-1232-3

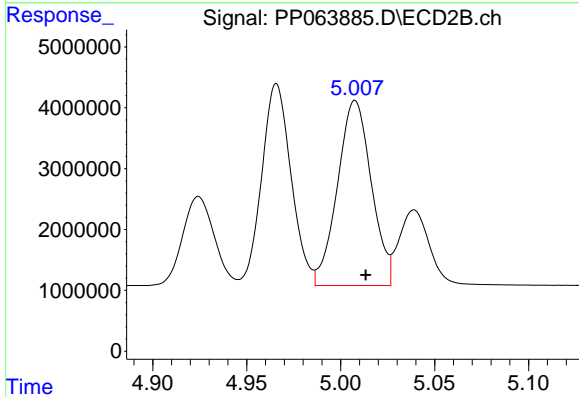
R.T.: 4.924 min
 Delta R.T.: -0.004 min
 Response: 17120214
 Conc: 617.27 ng/ml



#14 AR-1232-4

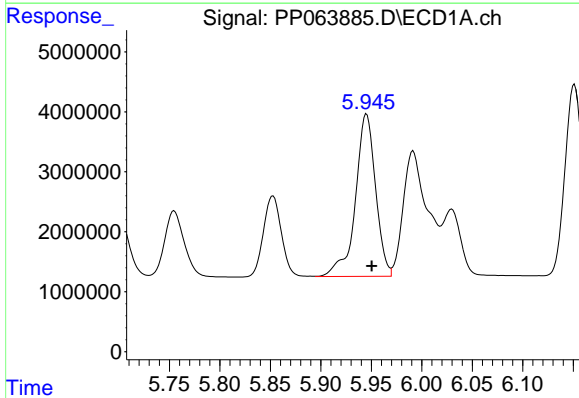
R.T.: 5.853 min
 Delta R.T.: -0.006 min
 Response: 16695634
 Conc: 600.27 ng/ml

Instrument :
 ECD_P
 ClientSampleId :



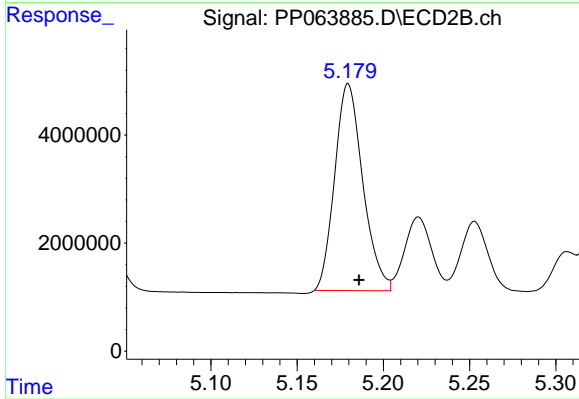
#14 AR-1232-4

R.T.: 5.008 min
 Delta R.T.: -0.006 min
 Response: 38140333
 Conc: 1390.29 ng/ml



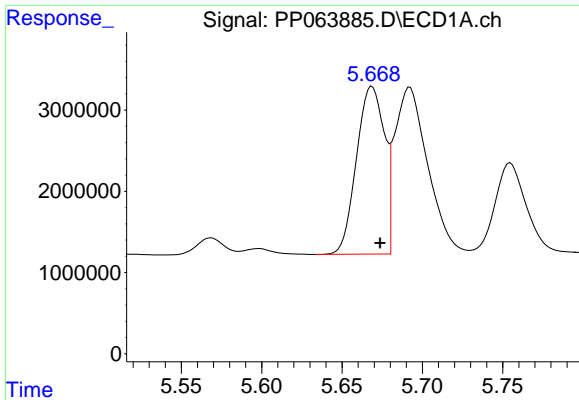
#15 AR-1232-5

R.T.: 5.945 min
 Delta R.T.: -0.005 min
 Response: 37673442
 Conc: 1613.26 ng/ml



#15 AR-1232-5

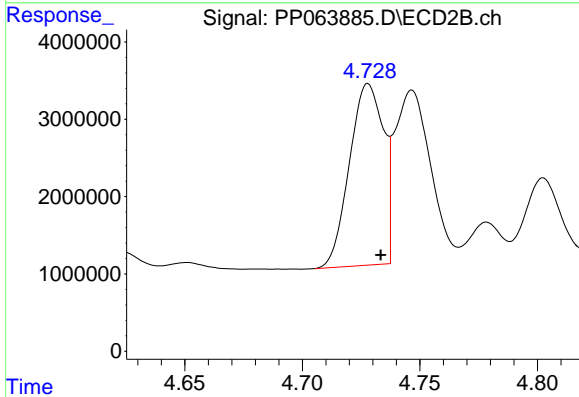
R.T.: 5.180 min
 Delta R.T.: -0.006 min
 Response: 43299765
 Conc: 1467.45 ng/ml



#16 AR-1242-1

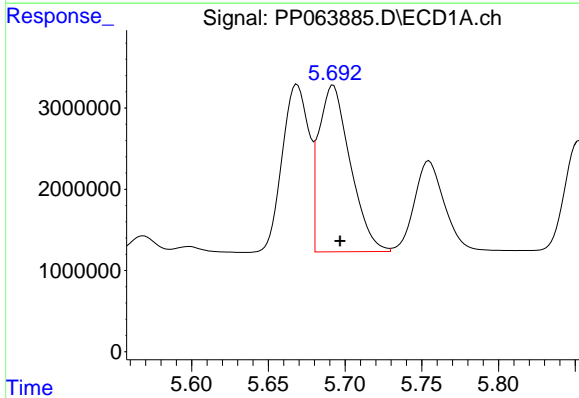
R.T.: 5.669 min
 Delta R.T.: -0.005 min
 Response: 24867902
 Conc: 412.28 ng/ml

Instrument :
 ECD_P
 ClientSampleId :



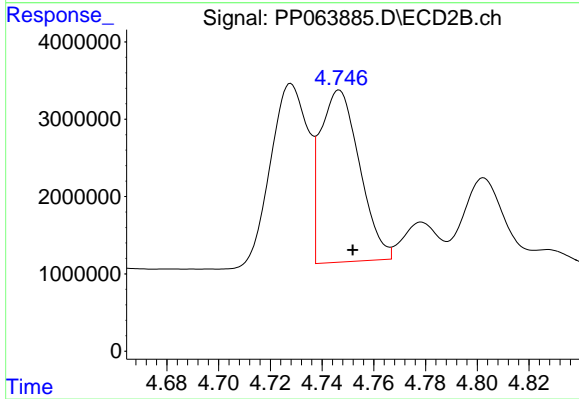
#16 AR-1242-1

R.T.: 4.728 min
 Delta R.T.: -0.005 min
 Response: 23600860
 Conc: 400.35 ng/ml



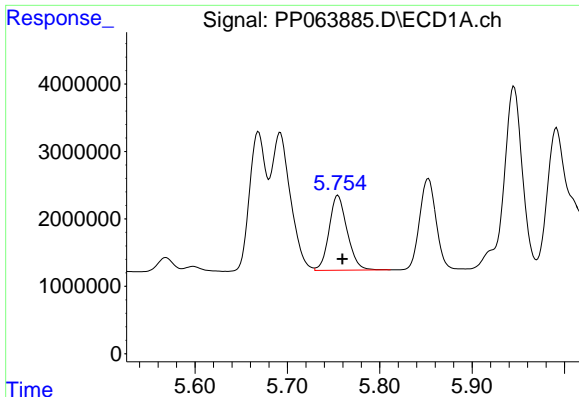
#17 AR-1242-2

R.T.: 5.692 min
 Delta R.T.: -0.005 min
 Response: 29259562
 Conc: 340.73 ng/ml



#17 AR-1242-2

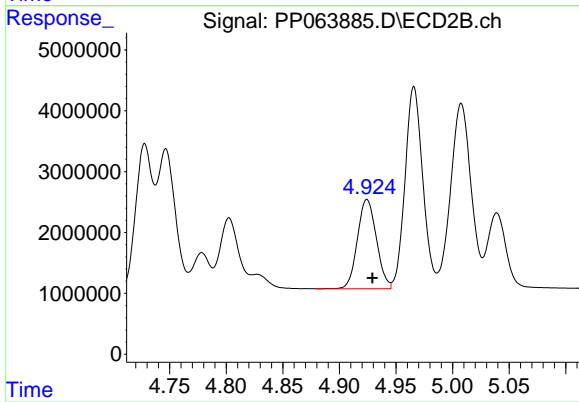
R.T.: 4.747 min
 Delta R.T.: -0.005 min
 Response: 23417846
 Conc: 286.15 ng/ml



#18 AR-1242-3

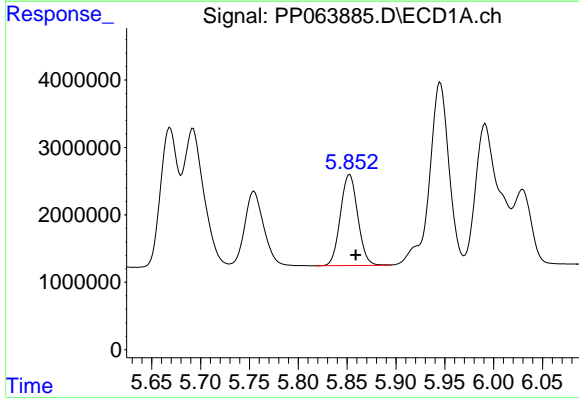
R.T.: 5.755 min
 Delta R.T.: -0.005 min
 Response: 15103363
 Conc: 268.71 ng/ml

Instrument :
 ECD_P
 ClientSampleId :



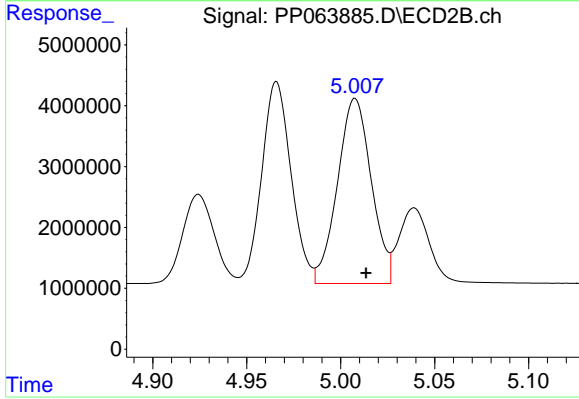
#18 AR-1242-3

R.T.: 4.924 min
 Delta R.T.: -0.005 min
 Response: 17120214
 Conc: 381.45 ng/ml



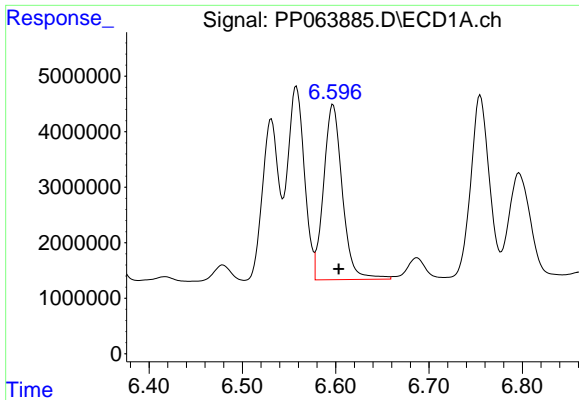
#19 AR-1242-4

R.T.: 5.853 min
 Delta R.T.: -0.006 min
 Response: 16695634
 Conc: 371.06 ng/ml



#19 AR-1242-4

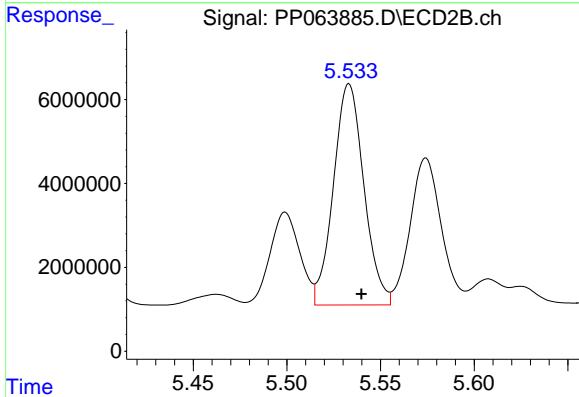
R.T.: 5.008 min
 Delta R.T.: -0.006 min
 Response: 38140333
 Conc: 768.43 ng/ml



#20 AR-1242-5

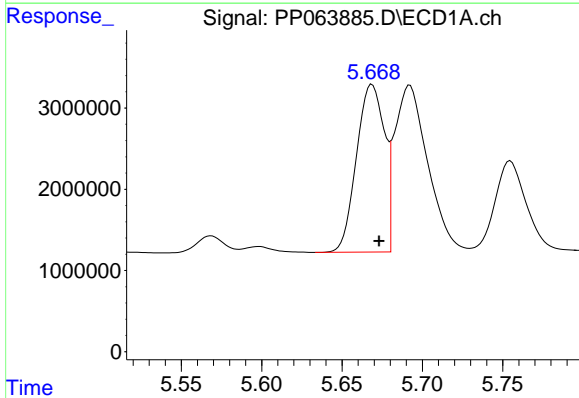
R.T.: 6.597 min
 Delta R.T.: -0.006 min
 Response: 43987676
 Conc: 982.22 ng/ml

Instrument :
 ECD_P
 ClientSampleId :



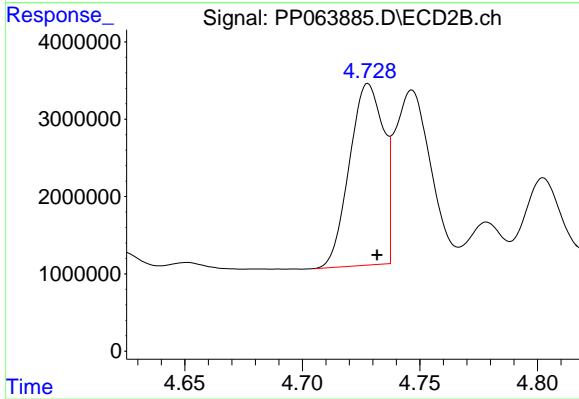
#20 AR-1242-5

R.T.: 5.533 min
 Delta R.T.: -0.007 min
 Response: 59663653
 Conc: 1022.36 ng/ml



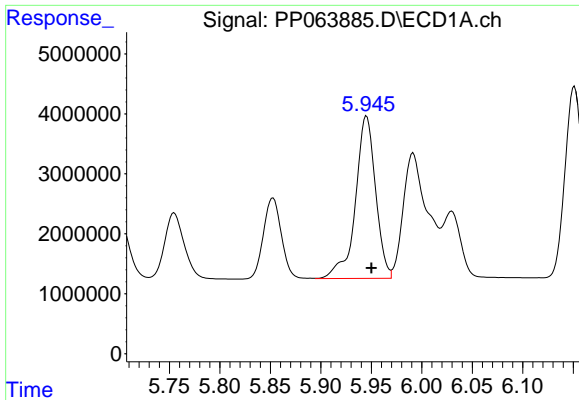
#21 AR-1248-1

R.T.: 5.669 min
 Delta R.T.: -0.004 min
 Response: 24867902
 Conc: 532.30 ng/ml



#21 AR-1248-1

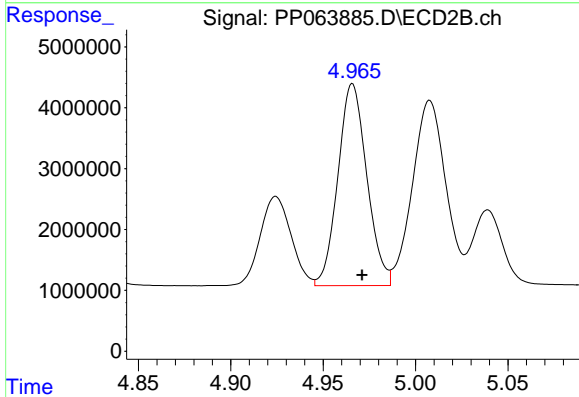
R.T.: 4.728 min
 Delta R.T.: -0.004 min
 Response: 23600860
 Conc: 529.86 ng/ml



#22 AR-1248-2

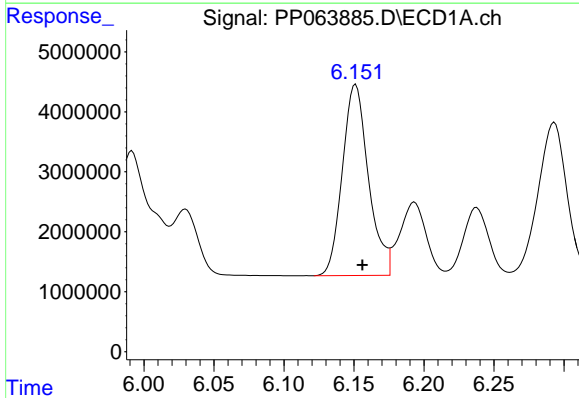
R.T.: 5.945 min
 Delta R.T.: -0.005 min
 Response: 37673442
 Conc: 519.08 ng/ml

Instrument :
 ECD_P
 ClientSampleId :



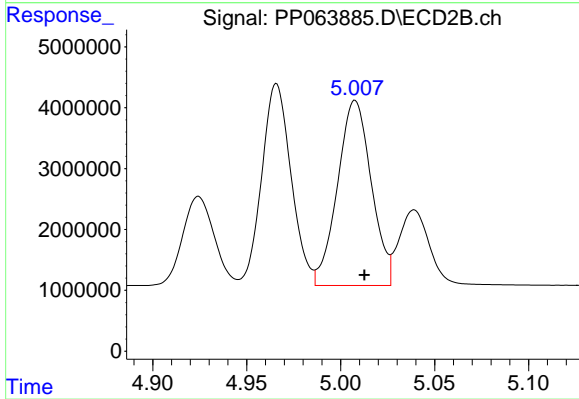
#22 AR-1248-2

R.T.: 4.966 min
 Delta R.T.: -0.005 min
 Response: 36108749
 Conc: 508.76 ng/ml



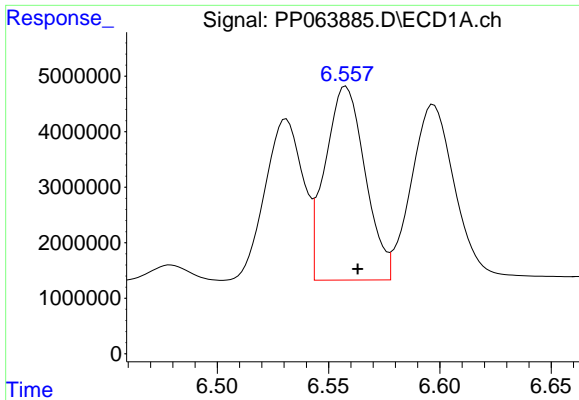
#23 AR-1248-3

R.T.: 6.151 min
 Delta R.T.: -0.005 min
 Response: 41361633
 Conc: 512.25 ng/ml



#23 AR-1248-3

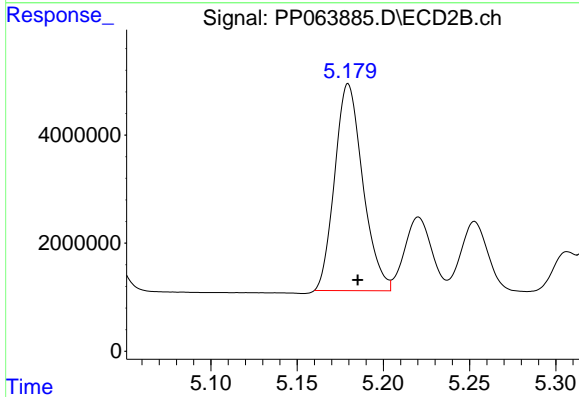
R.T.: 5.008 min
 Delta R.T.: -0.005 min
 Response: 38140333
 Conc: 515.41 ng/ml



#24 AR-1248-4

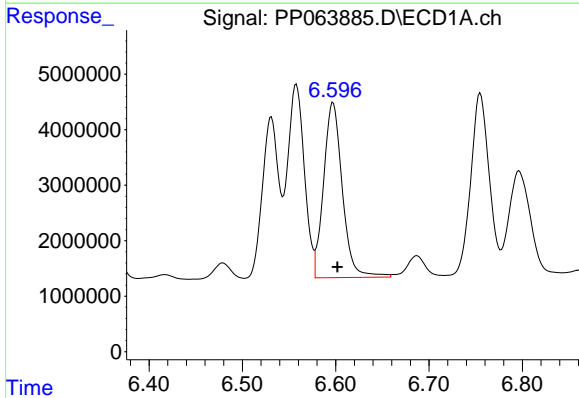
R.T.: 6.558 min
 Delta R.T.: -0.005 min
 Response: 43655110
 Conc: 533.85 ng/ml

Instrument :
 ECD_P
 ClientSampleId :



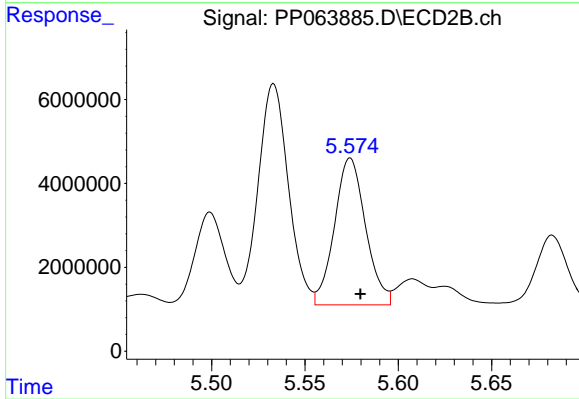
#24 AR-1248-4

R.T.: 5.180 min
 Delta R.T.: -0.005 min
 Response: 43299765
 Conc: 500.04 ng/ml



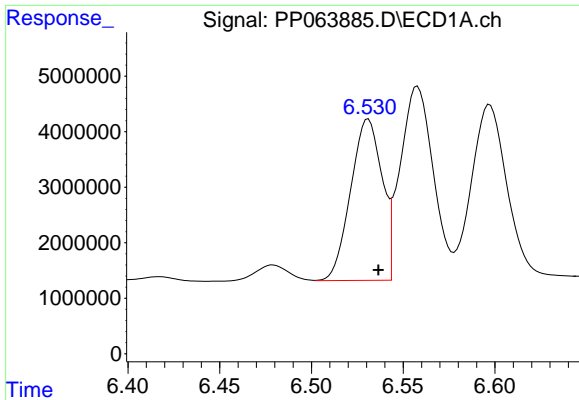
#25 AR-1248-5

R.T.: 6.597 min
 Delta R.T.: -0.005 min
 Response: 43987676
 Conc: 539.35 ng/ml



#25 AR-1248-5

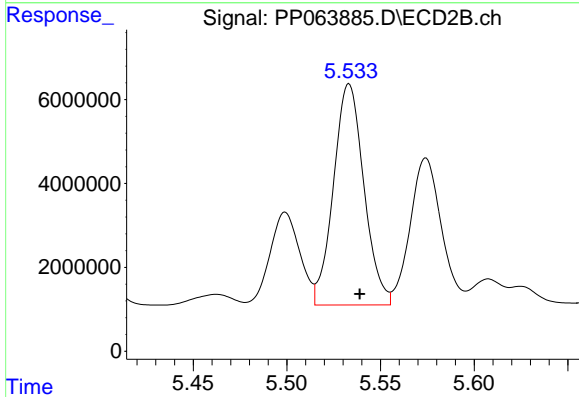
R.T.: 5.574 min
 Delta R.T.: -0.006 min
 Response: 40700340
 Conc: 542.11 ng/ml



#26 AR-1254-1

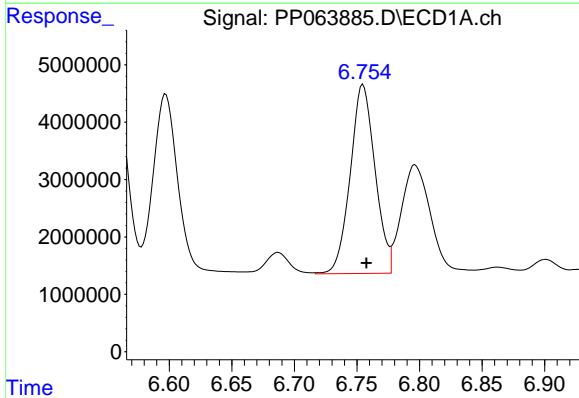
R.T.: 6.531 min
 Delta R.T.: -0.005 min
 Response: 34580913
 Conc: 380.36 ng/ml

Instrument :
 ECD_P
 ClientSampleId :



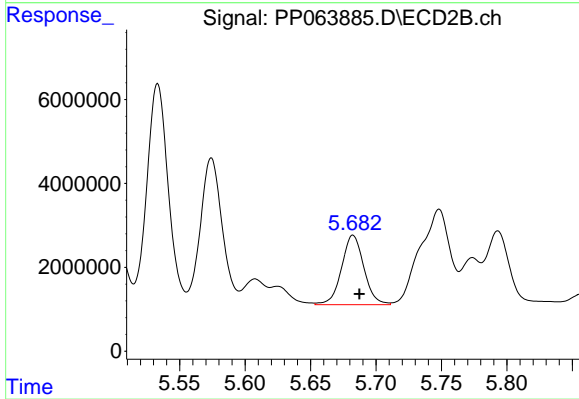
#26 AR-1254-1

R.T.: 5.533 min
 Delta R.T.: -0.006 min
 Response: 59663653
 Conc: 482.82 ng/ml



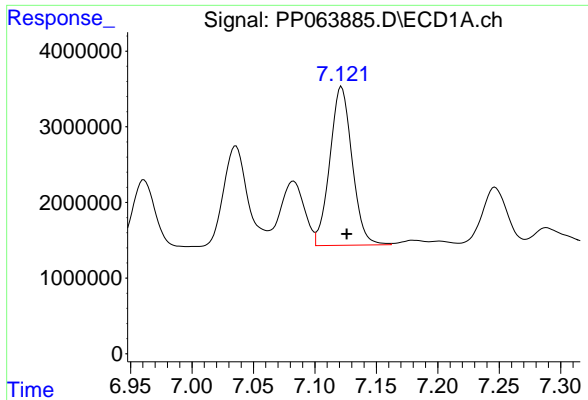
#27 AR-1254-2

R.T.: 6.755 min
 Delta R.T.: -0.002 min
 Response: 45418573
 Conc: 331.30 ng/ml



#27 AR-1254-2

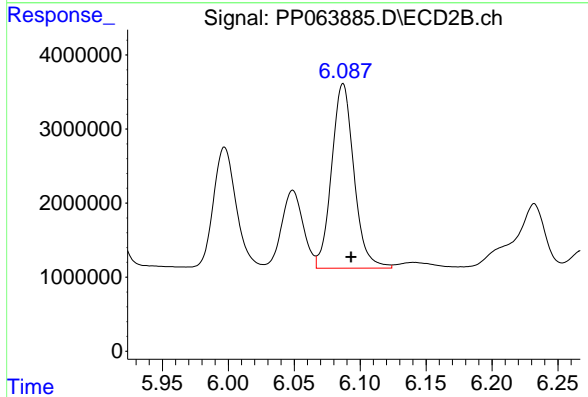
R.T.: 5.682 min
 Delta R.T.: -0.005 min
 Response: 19703247
 Conc: 171.66 ng/ml



#28 AR-1254-3

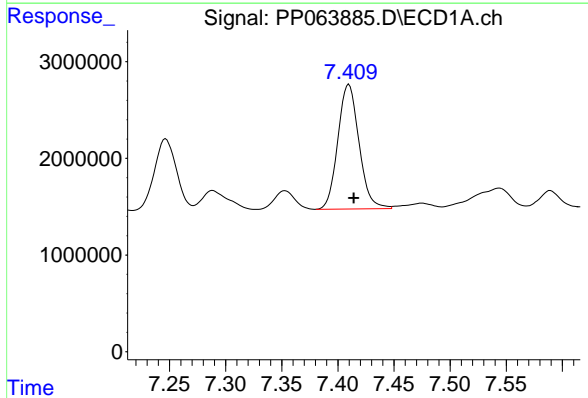
R.T.: 7.122 min
 Delta R.T.: -0.004 min
 Response: 26478318
 Conc: 189.20 ng/ml

Instrument :
 ECD_P
 ClientSampleId :



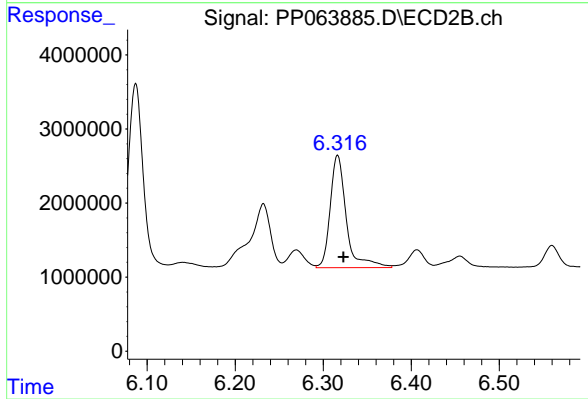
#28 AR-1254-3

R.T.: 6.087 min
 Delta R.T.: -0.006 min
 Response: 29390954
 Conc: 163.34 ng/ml



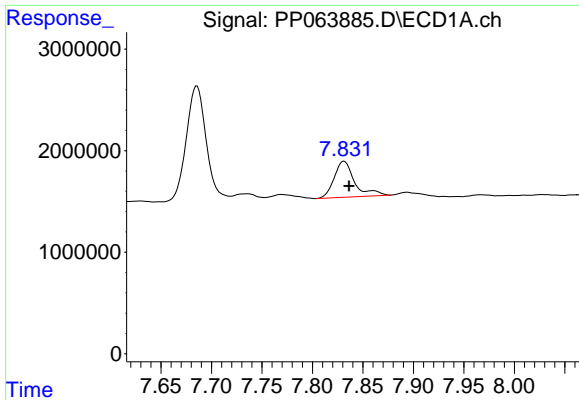
#29 AR-1254-4

R.T.: 7.410 min
 Delta R.T.: -0.004 min
 Response: 16919519
 Conc: 185.71 ng/ml



#29 AR-1254-4

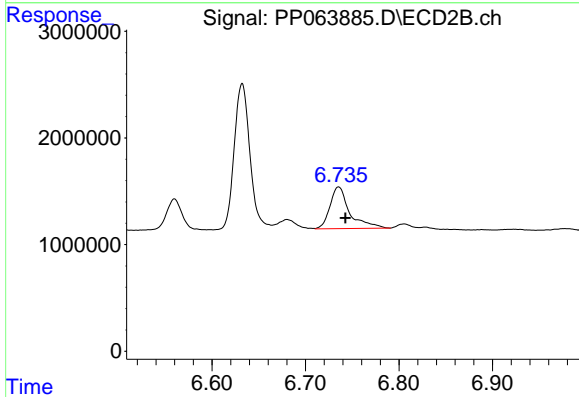
R.T.: 6.316 min
 Delta R.T.: -0.007 min
 Response: 19260230
 Conc: 209.01 ng/ml



#30 AR-1254-5

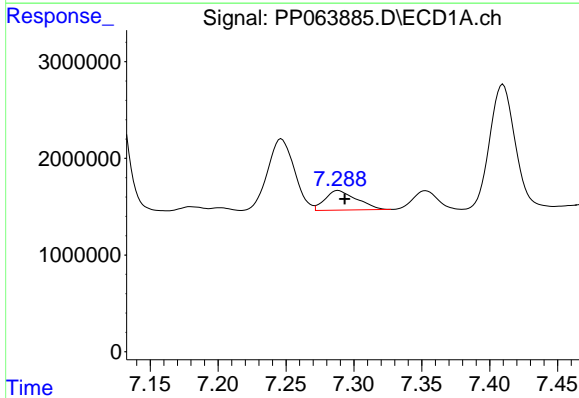
R.T.: 7.831 min
 Delta R.T.: -0.005 min
 Response: 4985824
 Conc: 42.40 ng/ml

Instrument :
 ECD_P
 ClientSampleId :



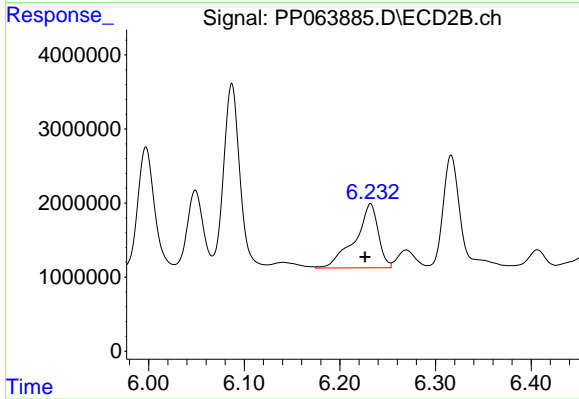
#30 AR-1254-5

R.T.: 6.735 min
 Delta R.T.: -0.007 min
 Response: 5712243
 Conc: 34.22 ng/ml



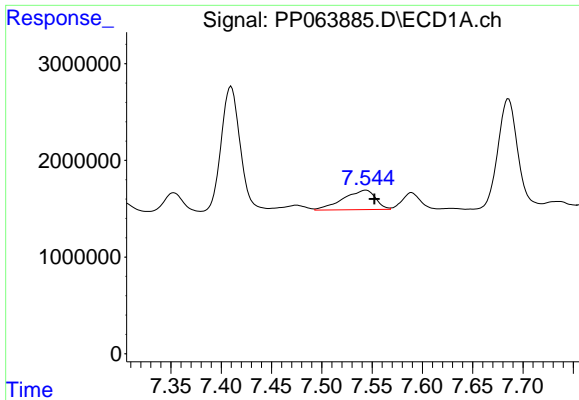
#31 AR-1260-1

R.T.: 7.289 min
 Delta R.T.: -0.005 min
 Response: 3264010
 Conc: 25.84 ng/ml



#31 AR-1260-1

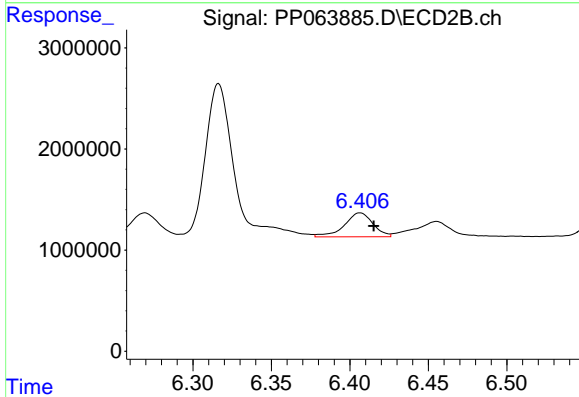
R.T.: 6.232 min
 Delta R.T.: 0.006 min
 Response: 14609156
 Conc: 102.23 ng/ml



#32 AR-1260-2

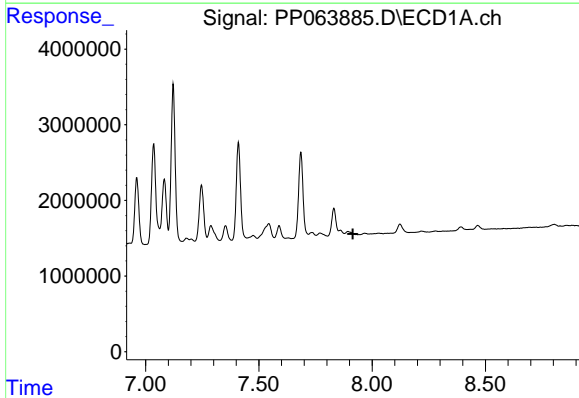
R.T.: 7.544 min
 Delta R.T.: -0.009 min
 Response: 4544858
 Conc: 31.84 ng/ml

Instrument :
 ECD_P
 ClientSampleId :



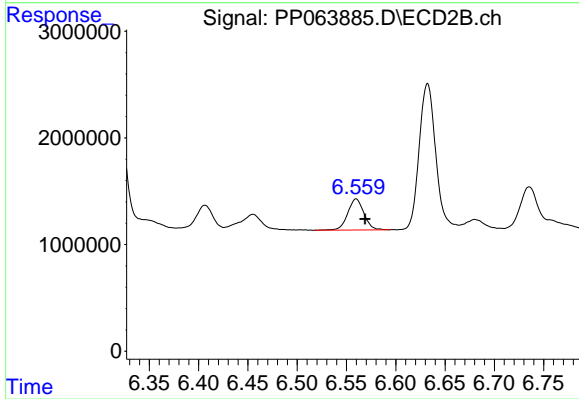
#32 AR-1260-2

R.T.: 6.407 min
 Delta R.T.: -0.009 min
 Response: 3030786
 Conc: 17.93 ng/ml



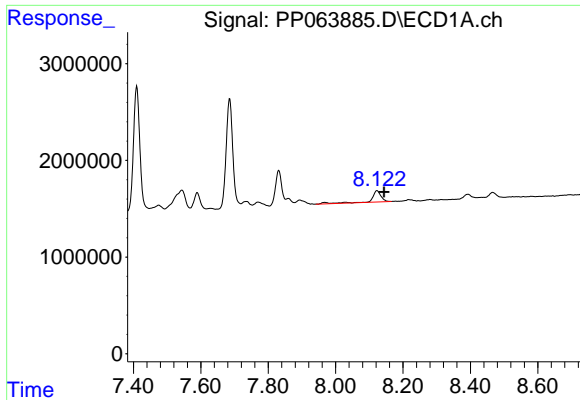
#33 AR-1260-3

R.T.: 0.000 min
 Exp R.T. : 7.915 min
 Response: 0
 Conc: N.D.



#33 AR-1260-3

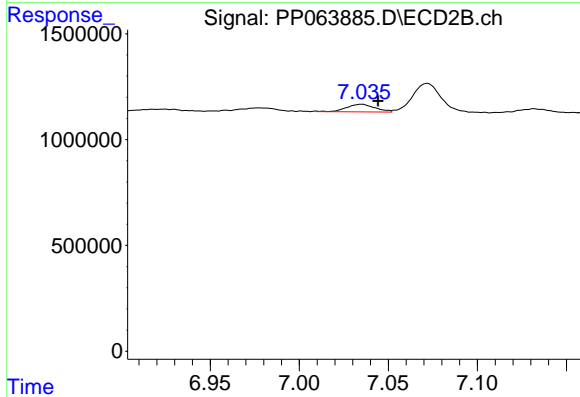
R.T.: 6.560 min
 Delta R.T.: -0.009 min
 Response: 3329608
 Conc: 20.72 ng/ml



#34 AR-1260-4

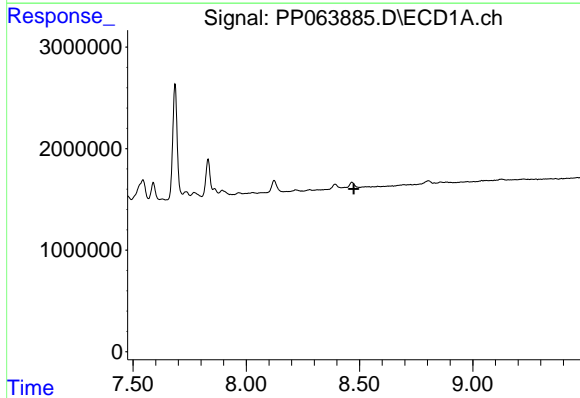
R.T.: 8.123 min
 Delta R.T.: -0.021 min
 Response: 2250839
 Conc: 18.71 ng/ml

Instrument :
 ECD_P
 ClientSampleId :



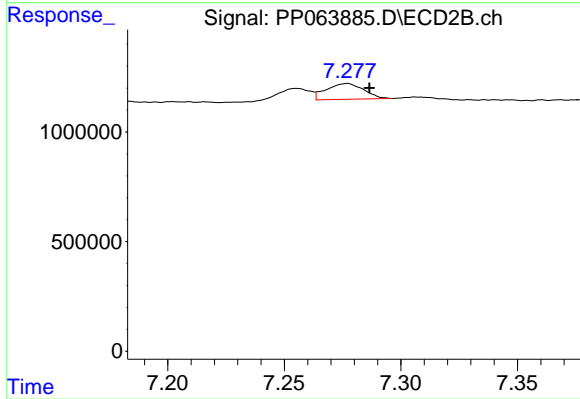
#34 AR-1260-4

R.T.: 7.035 min
 Delta R.T.: -0.009 min
 Response: 402640
 Conc: 3.30 ng/ml



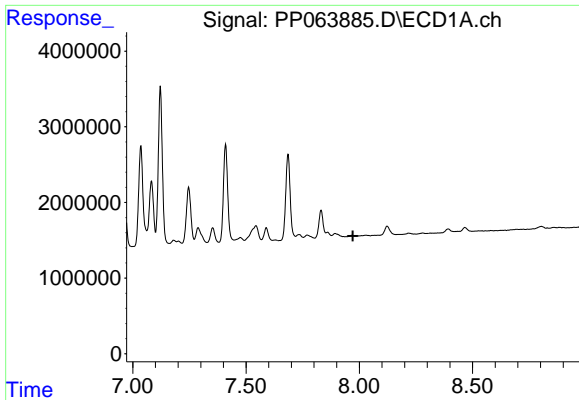
#35 AR-1260-5

R.T.: 0.000 min
 Exp R.T. : 8.474 min
 Response: 0
 Conc: N.D.



#35 AR-1260-5

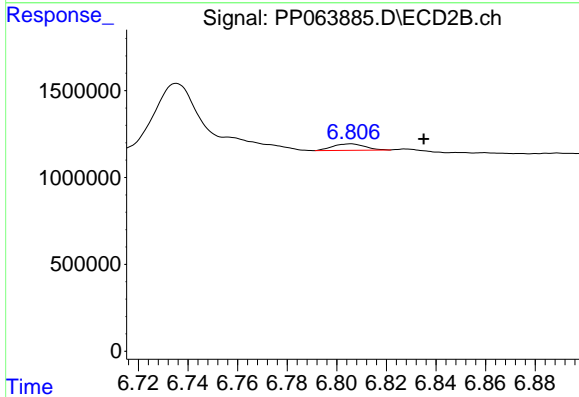
R.T.: 7.277 min
 Delta R.T.: -0.010 min
 Response: 811375
 Conc: 3.04 ng/ml



#36 AR-1262-1

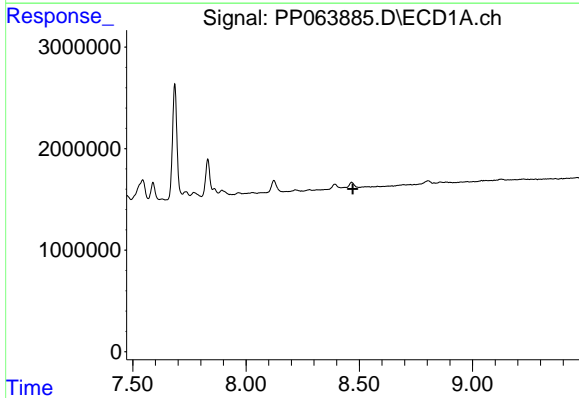
R.T.: 0.000 min
 Exp R.T. : 7.972 min
 Response: 0
 Conc: N.D.

Instrument :
 ECD_P
 ClientSampleId :



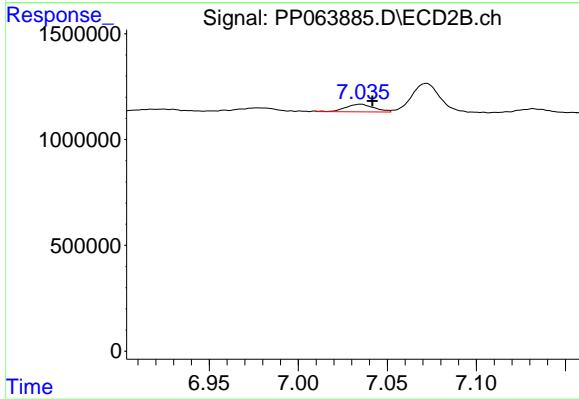
#36 AR-1262-1

R.T.: 6.806 min
 Delta R.T.: -0.029 min
 Response: 333858
 Conc: 4.94 ng/ml



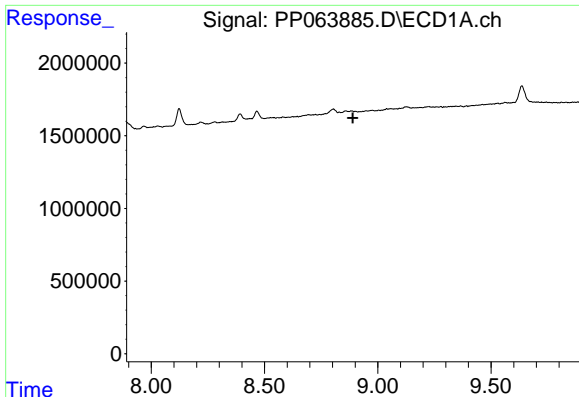
#37 AR-1262-2

R.T.: 0.000 min
 Exp R.T. : 8.472 min
 Response: 0
 Conc: N.D.



#37 AR-1262-2

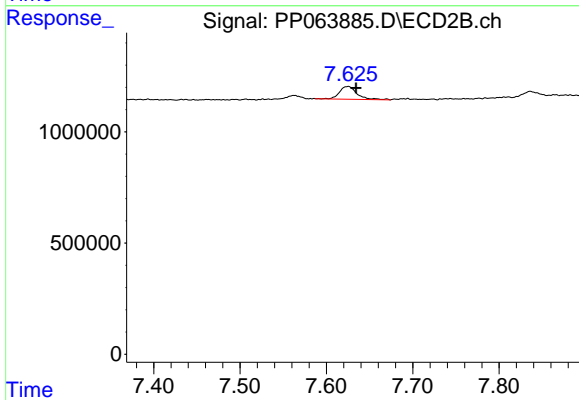
R.T.: 7.035 min
 Delta R.T.: -0.007 min
 Response: 402640
 Conc: 2.52 ng/ml



#39 AR-1262-4

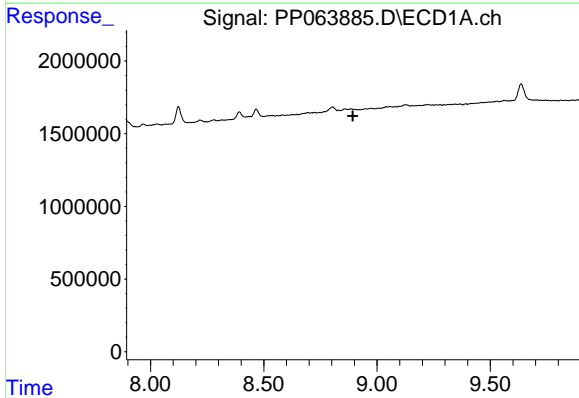
R.T.: 0.000 min
 Exp R.T. : 8.889 min
 Response: 0
 Conc: N.D.

Instrument :
 ECD_P
 ClientSampleId :



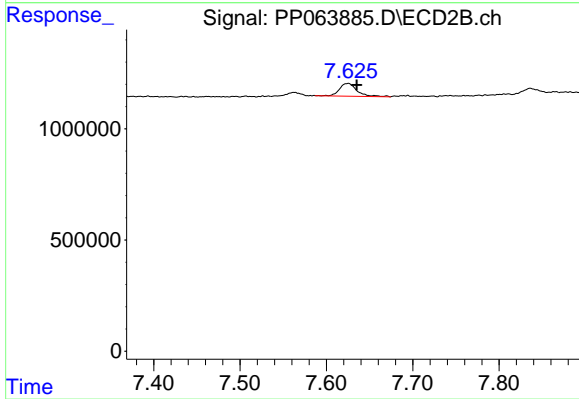
#39 AR-1262-4

R.T.: 7.625 min
 Delta R.T.: -0.009 min
 Response: 812000
 Conc: 3.80 ng/ml



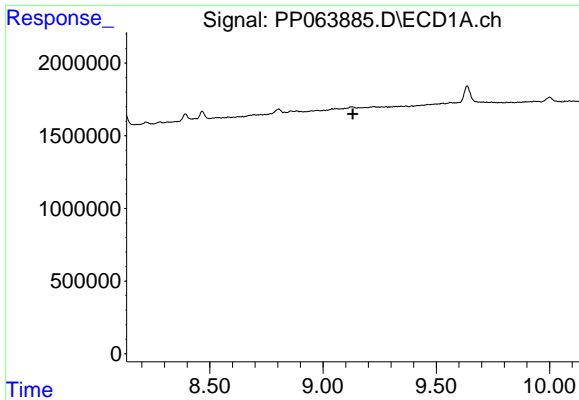
#42 AR-1268-2

R.T.: 0.000 min
 Exp R.T. : 8.893 min
 Response: 0
 Conc: N.D.



#42 AR-1268-2

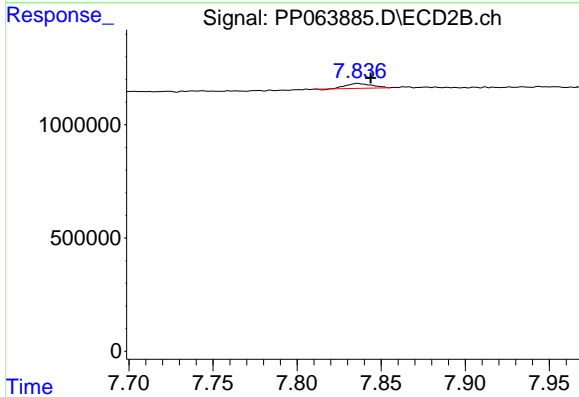
R.T.: 7.625 min
 Delta R.T.: -0.010 min
 Response: 812000
 Conc: 2.36 ng/ml



#43 AR-1268-3

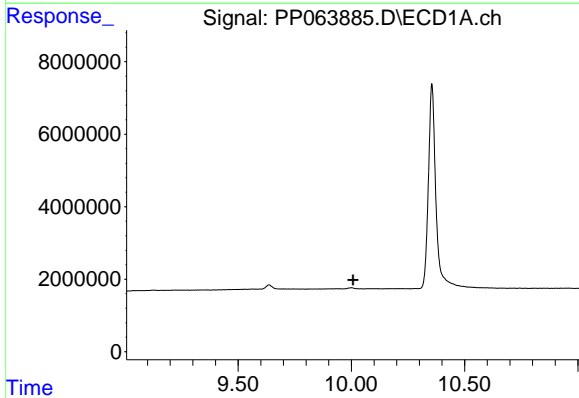
R.T.: 0.000 min
 Exp R.T.: 9.131 min
 Response: 0
 Conc: N.D.

Instrument :
 ECD_P
 ClientSampleId :



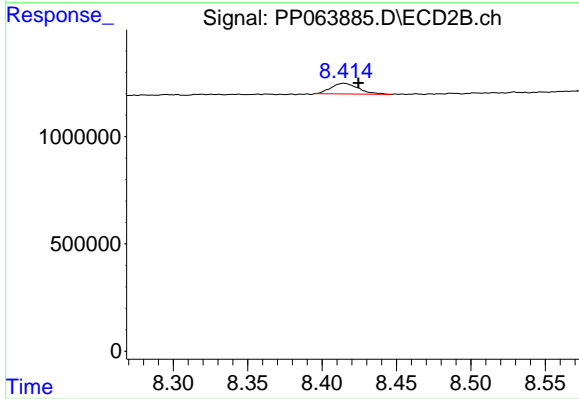
#43 AR-1268-3

R.T.: 7.836 min
 Delta R.T.: -0.008 min
 Response: 219392
 Conc: 0.73 ng/ml



#45 AR-1268-5

R.T.: 0.000 min
 Exp R.T.: 10.008 min
 Response: 0
 Conc: N.D.



#45 AR-1268-5

R.T.: 8.415 min
 Delta R.T.: -0.010 min
 Response: 642216
 Conc: 0.77 ng/ml