

Data Path : Z:\pestpcbsrv\HPCHEM1\ECD\_P\Data\PP032824\  
 Data File : PP063906.D  
 Signal(s) : Signal #1: ECD1A.ch Signal #2: ECD2B.ch  
 Acq On : 28 Mar 2024 18:28  
 Operator : YP\AJ  
 Sample : P1899-01  
 Misc :  
 ALS Vial : 20 Sample Multiplier: 1

Instrument :  
 ECD\_P  
 ClientSampleId :

Integration File signal 1: autoint1.e  
 Integration File signal 2: autoint2.e  
 Quant Time: Mar 29 01:30:59 2024  
 Quant Method : Z:\pestpcbsrv\HPCHEM1\ECD\_P\methods\PP031924.M  
 Quant Title : GC EXTRACTABLES  
 QLast Update : Tue Mar 19 06:23:02 2024  
 Response via : Initial Calibration  
 Integrator: ChemStation

Volume Inj. : 2 µl  
 Signal #1 Phase : ZB-MR1 Signal #2 Phase: ZB-MR2  
 Signal #1 Info : 30Mx0.32mmx 0.50µ Signal #2 Info : 30M x 0.32mm x 0.25µm

Compound	RT#1	RT#2	Resp#1	Resp#2	ng/ml	ng/ml
-----						
System Monitoring Compounds						
1) SA Tetrachlo...	4.488	3.639	40827755	42806656	17.110	17.929
2) SA Decachlor...	10.356	8.673	40530993	38876669	15.963	14.385
Target Compounds						
7) L1 AR-1016-5	0.000	5.171	0	216112	N.D.	3.109 #
9) L2 AR-1221-2	0.000	3.940	0	687619	N.D.	33.552 #
15) L3 AR-1232-5	0.000	5.171	0	216112	N.D.	7.324 #
24) L5 AR-1248-4	0.000	5.171	0	216112	N.D.	2.496 #
28) L6 AR-1254-3	0.000	6.115f	0	783487	N.D.	4.354 #
32) L7 AR-1260-2	0.000	6.394f	0	467672	N.D.	2.767 #
34) L7 AR-1260-4	8.117f	7.031	1502753	284448	12.492	2.334 #
35) L7 AR-1260-5	8.472	7.260f	192670	723984	0.928	2.714 #
36) L8 AR-1262-1	7.999f	0.000	6512106	0	111.326	N.D. #
37) L8 AR-1262-2	8.472	7.031	192670	284448	0.936	1.780 #
39) L8 AR-1262-4	0.000	7.627	0	37259	N.D.	0.174 #
42) L9 AR-1268-2	0.000	7.627	0	37259	N.D.	0.108 #

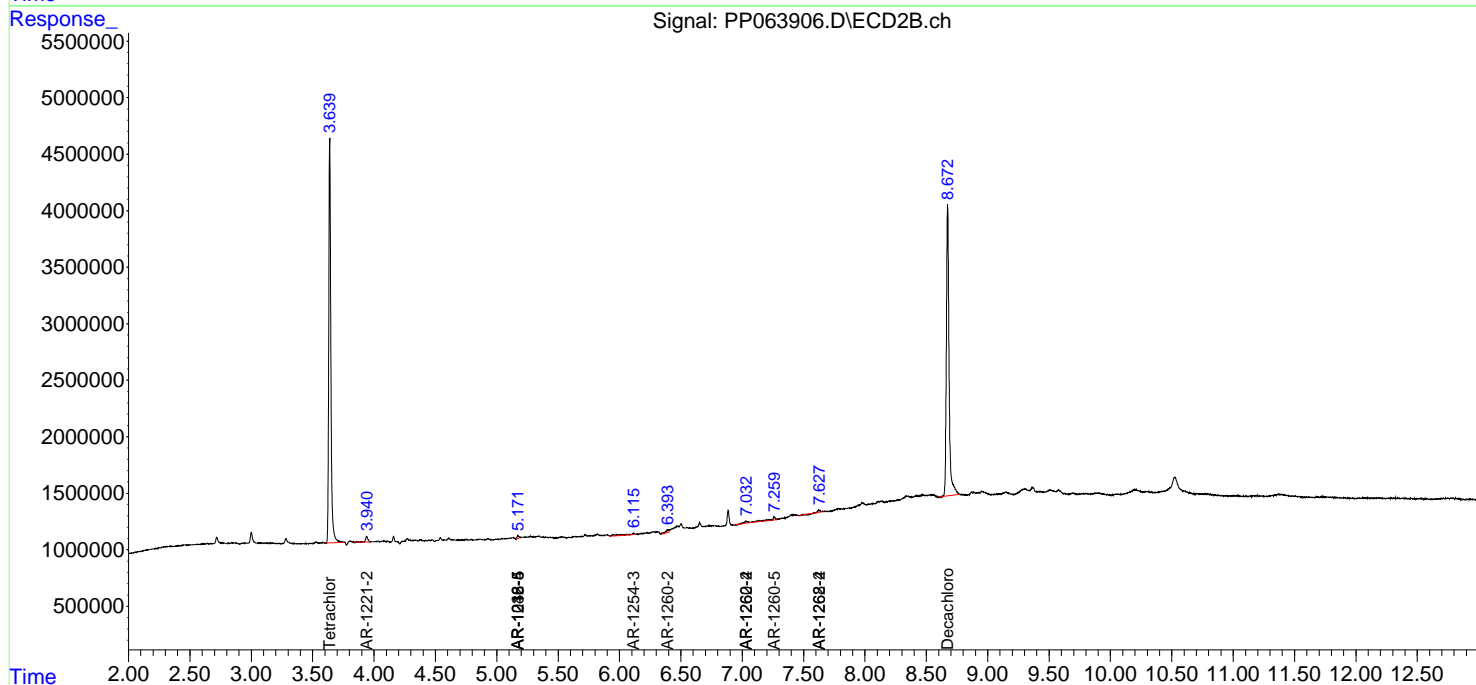
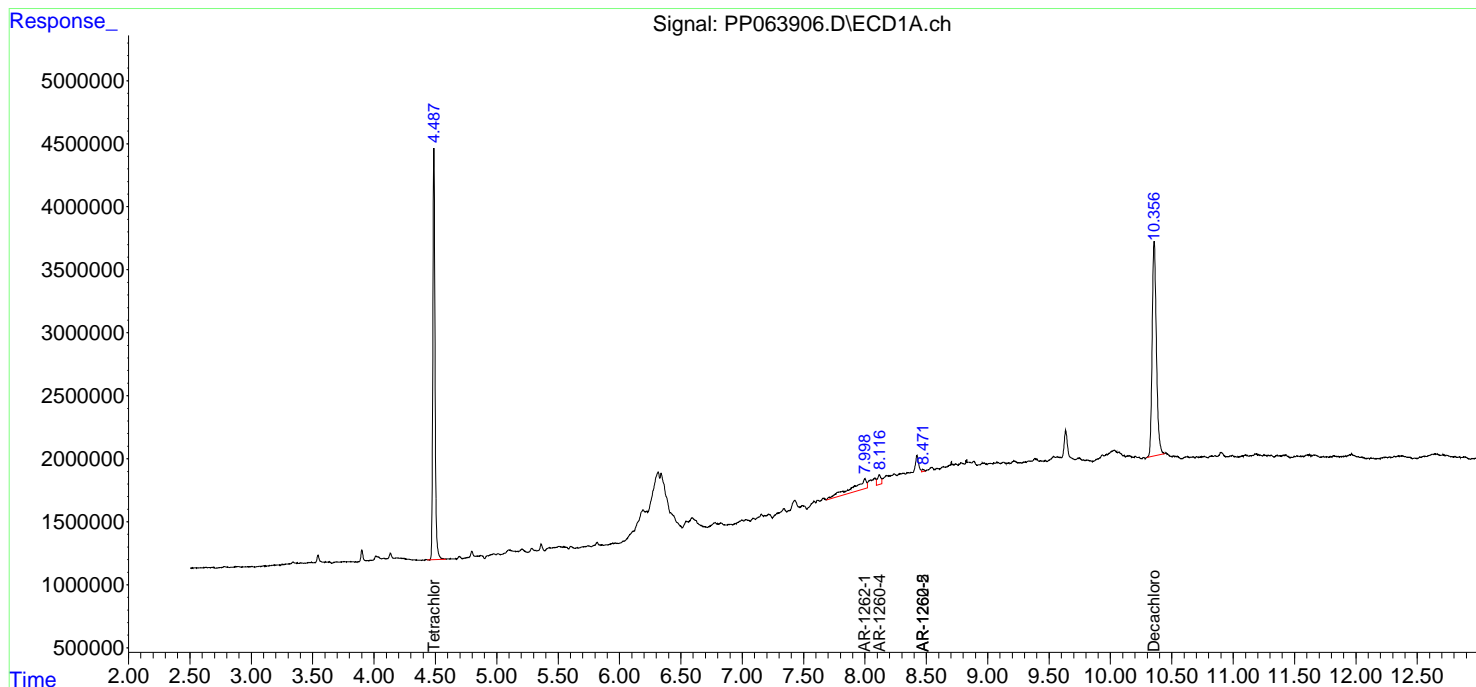
(f)=RT Delta > 1/2 Window (#)=Amounts differ by > 25% (m)=manual int.

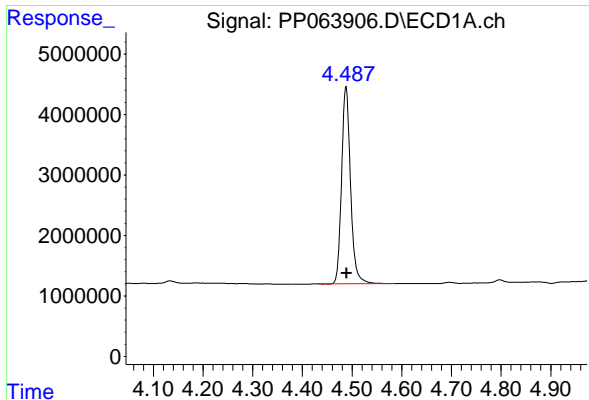
Data Path : Z:\pestpcbsrv\HPCHEM1\ECD\_P\Data\PP032824\  
 Data File : PP063906.D  
 Signal(s) : Signal #1: ECD1A.ch Signal #2: ECD2B.ch  
 Acq On : 28 Mar 2024 18:28  
 Operator : YP\AJ  
 Sample : P1899-01  
 Misc :  
 ALS Vial : 20 Sample Multiplier: 1

Instrument :  
 ECD\_P  
 ClientSampleId :

Integration File signal 1: autoint1.e  
 Integration File signal 2: autoint2.e  
 Quant Time: Mar 29 01:30:59 2024  
 Quant Method : Z:\pestpcbsrv\HPCHEM1\ECD\_P\methods\PP031924.M  
 Quant Title : GC EXTRACTABLES  
 QLast Update : Tue Mar 19 06:23:02 2024  
 Response via : Initial Calibration  
 Integrator: ChemStation

Volume Inj. : 2 µl  
 Signal #1 Phase : ZB-MR1 Signal #2 Phase: ZB-MR2  
 Signal #1 Info : 30Mx0.32mmx 0.50µm Signal #2 Info : 30M x 0.32mm x 0.25µm

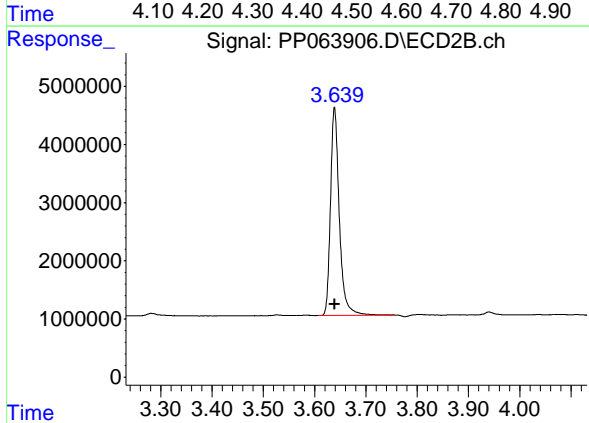




#1 Tetrachloro-m-xylene

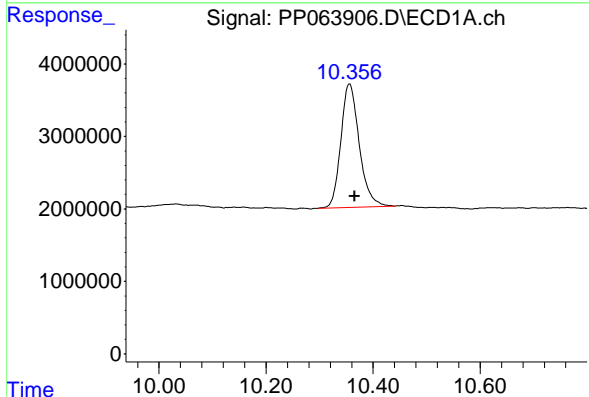
R.T.: 4.488 min  
Delta R.T.: 0.000 min  
Response: 40827755  
Conc: 17.11 ng/ml

Instrument :  
ECD\_P  
ClientSampleId :



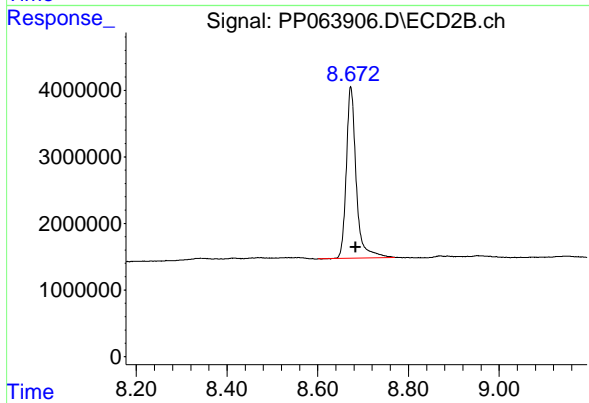
#1 Tetrachloro-m-xylene

R.T.: 3.639 min  
Delta R.T.: 0.000 min  
Response: 42806656  
Conc: 17.93 ng/ml



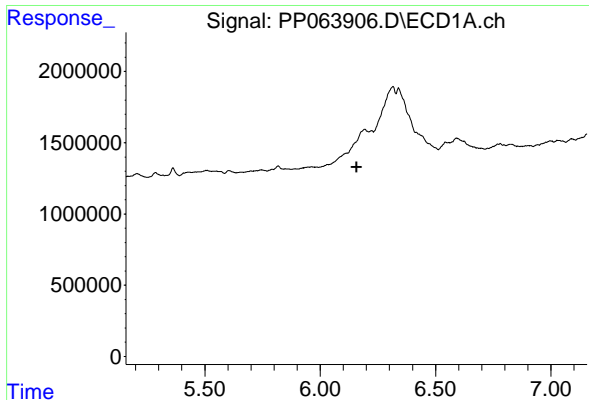
#2 Decachlorobiphenyl

R.T.: 10.356 min  
Delta R.T.: -0.009 min  
Response: 40530993  
Conc: 15.96 ng/ml



#2 Decachlorobiphenyl

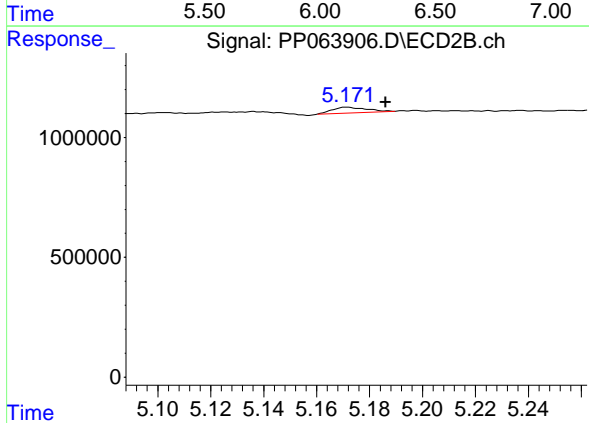
R.T.: 8.673 min  
Delta R.T.: -0.011 min  
Response: 38876669  
Conc: 14.39 ng/ml



#7 AR-1016-5

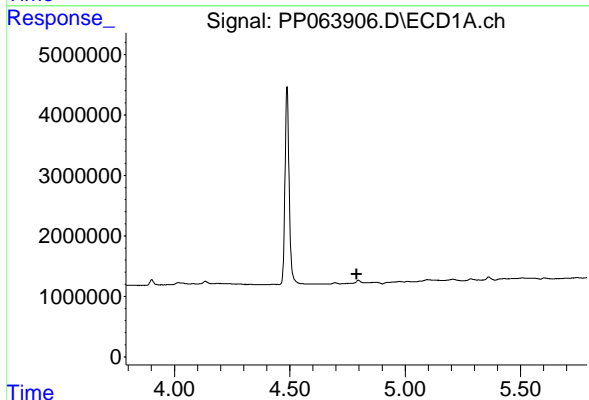
R.T.: 0.000 min  
 Exp R.T.: 6.157 min  
 Response: 0  
 Conc: N.D.

Instrument : ECD\_P  
 ClientSampleId :



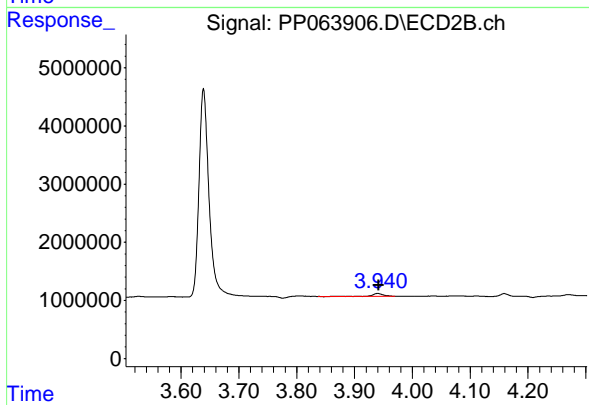
#7 AR-1016-5

R.T.: 5.171 min  
 Delta R.T.: -0.015 min  
 Response: 216112  
 Conc: 3.11 ng/ml



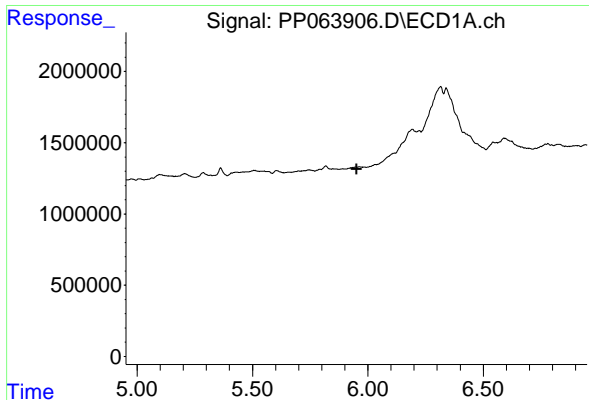
#9 AR-1221-2

R.T.: 0.000 min  
 Exp R.T.: 4.789 min  
 Response: 0  
 Conc: N.D.



#9 AR-1221-2

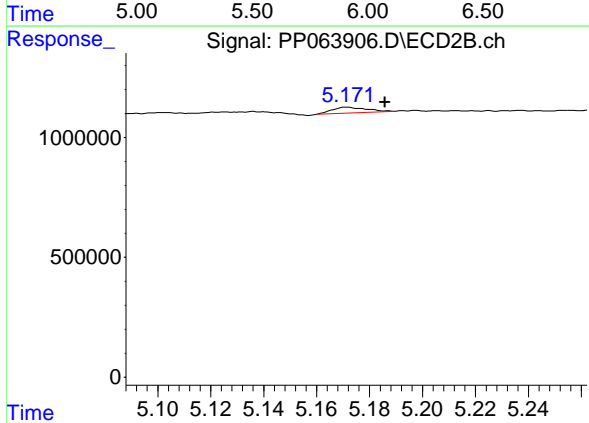
R.T.: 3.940 min  
 Delta R.T.: -0.002 min  
 Response: 687619  
 Conc: 33.55 ng/ml



#15 AR-1232-5

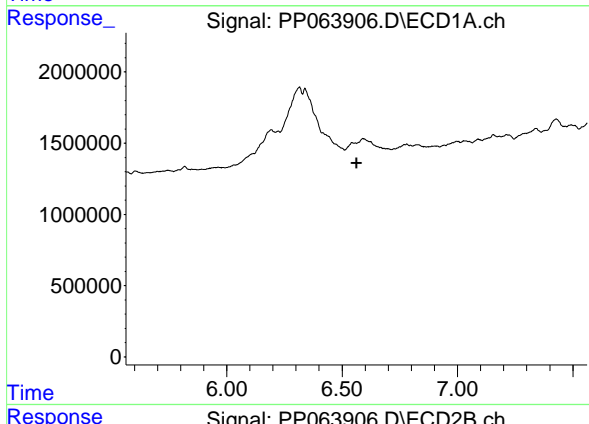
R.T.: 0.000 min  
 Exp R.T.: 5.950 min  
 Response: 0  
 Conc: N.D.

Instrument :  
 ECD\_P  
 ClientSampleId :



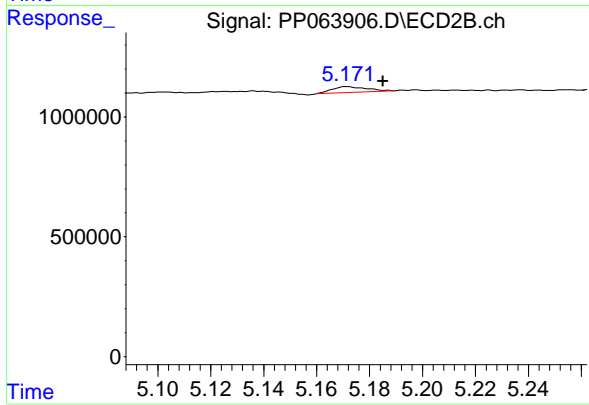
#15 AR-1232-5

R.T.: 5.171 min  
 Delta R.T.: -0.014 min  
 Response: 216112  
 Conc: 7.32 ng/ml



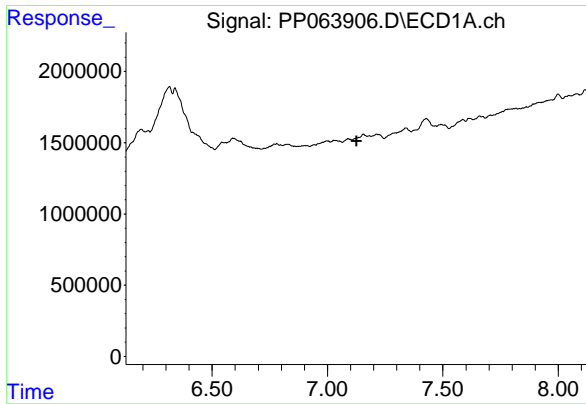
#24 AR-1248-4

R.T.: 0.000 min  
 Exp R.T.: 6.563 min  
 Response: 0  
 Conc: N.D.



#24 AR-1248-4

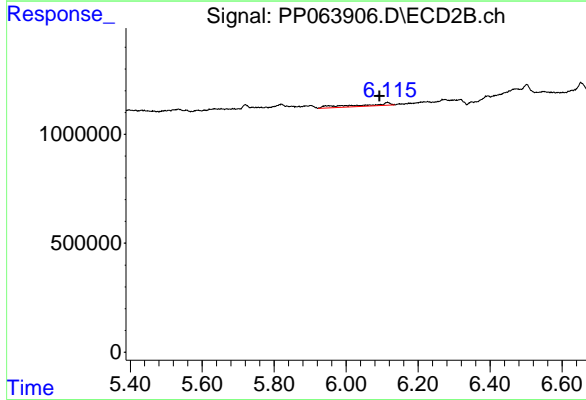
R.T.: 5.171 min  
 Delta R.T.: -0.014 min  
 Response: 216112  
 Conc: 2.50 ng/ml



#28 AR-1254-3

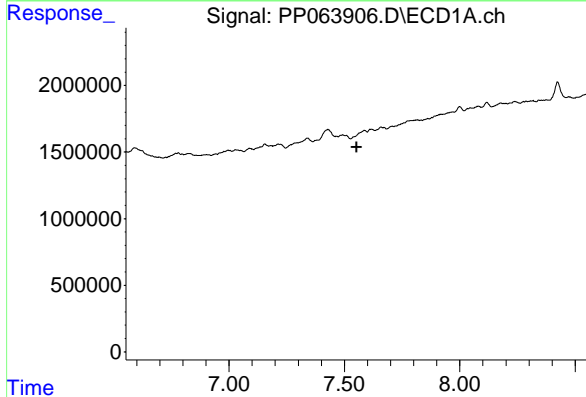
R.T.: 0.000 min  
 Exp R.T.: 7.126 min  
 Response: 0  
 Conc: N.D.

Instrument :  
 ECD\_P  
 ClientSampleId :



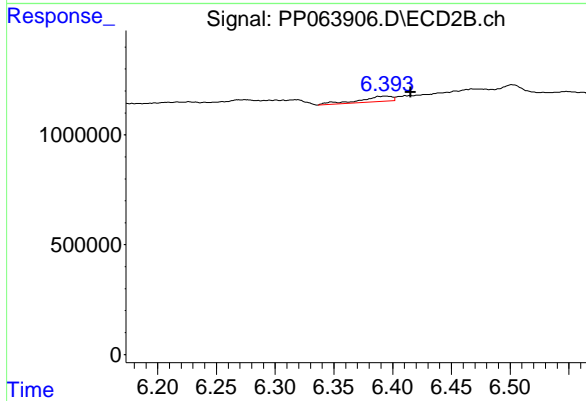
#28 AR-1254-3

R.T.: 6.115 min  
 Delta R.T.: 0.022 min  
 Response: 783487  
 Conc: 4.35 ng/ml



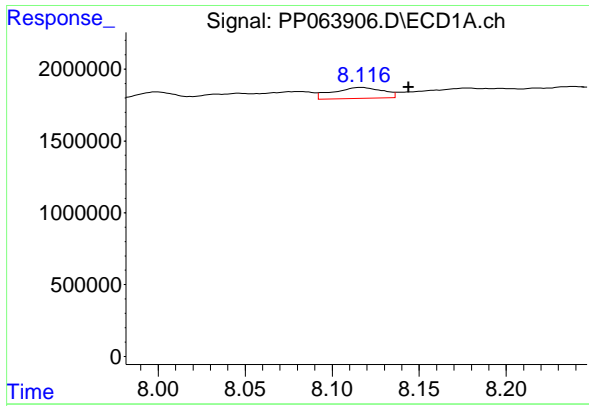
#32 AR-1260-2

R.T.: 0.000 min  
 Exp R.T.: 7.552 min  
 Response: 0  
 Conc: N.D.



#32 AR-1260-2

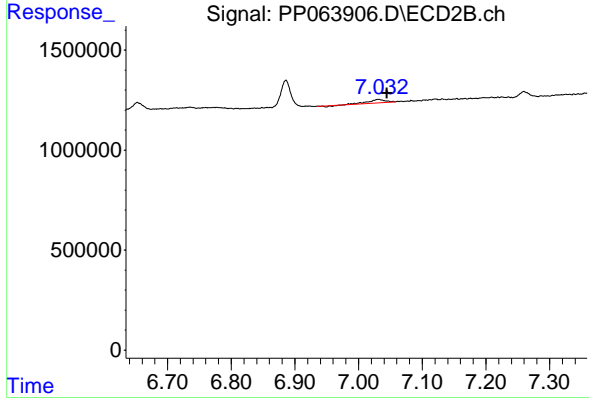
R.T.: 6.394 min  
 Delta R.T.: -0.021 min  
 Response: 467672  
 Conc: 2.77 ng/ml



#34 AR-1260-4

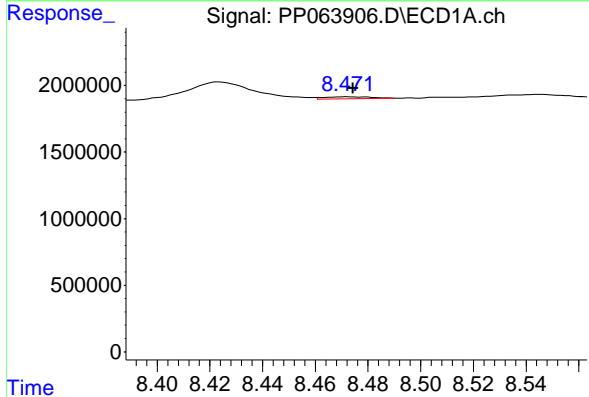
R.T.: 8.117 min  
 Delta R.T.: -0.027 min  
 Response: 1502753  
 Conc: 12.49 ng/ml

Instrument :  
 ECD\_P  
 ClientSampleId :



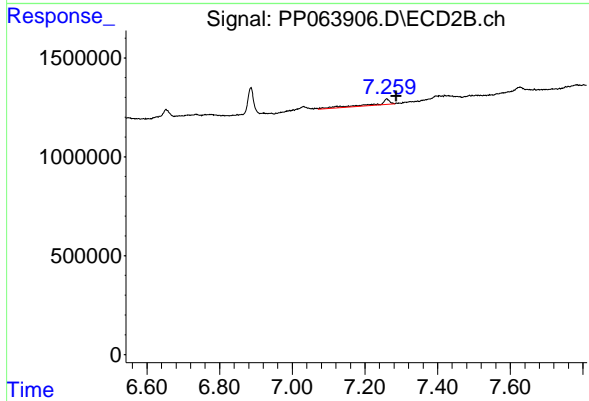
#34 AR-1260-4

R.T.: 7.031 min  
 Delta R.T.: -0.013 min  
 Response: 284448  
 Conc: 2.33 ng/ml



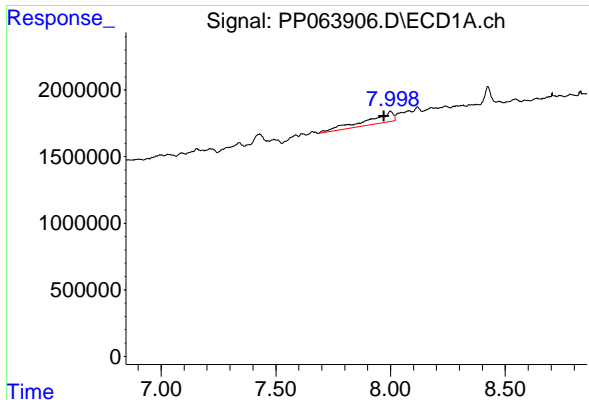
#35 AR-1260-5

R.T.: 8.472 min  
 Delta R.T.: -0.002 min  
 Response: 192670  
 Conc: 0.93 ng/ml



#35 AR-1260-5

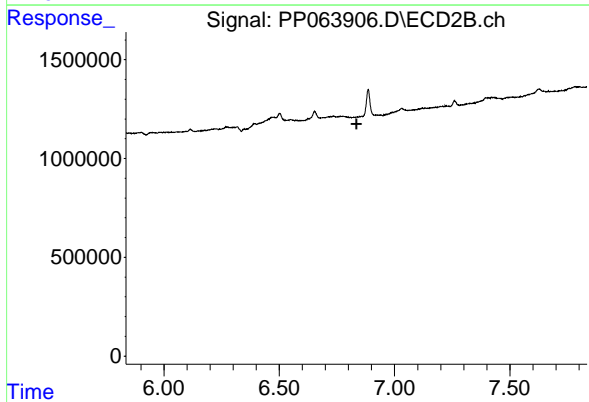
R.T.: 7.260 min  
 Delta R.T.: -0.027 min  
 Response: 723984  
 Conc: 2.71 ng/ml



#36 AR-1262-1

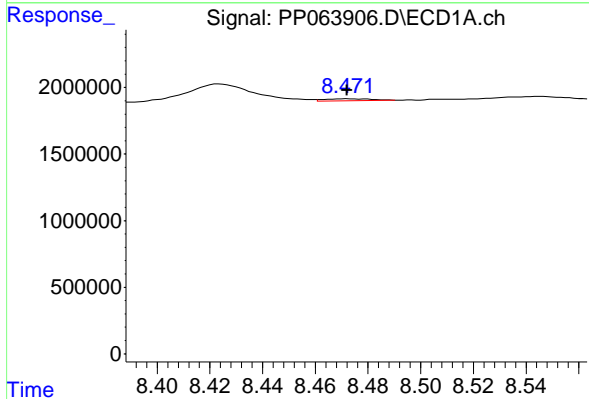
R.T.: 7.999 min  
 Delta R.T.: 0.027 min  
 Response: 6512106  
 Conc: 111.33 ng/ml

Instrument :  
 ECD\_P  
 ClientSampleId :



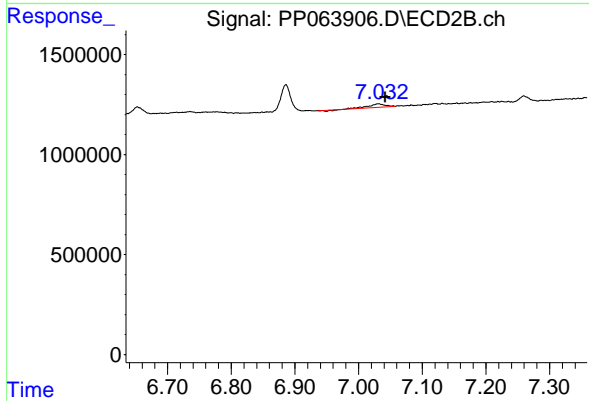
#36 AR-1262-1

R.T.: 0.000 min  
 Exp R.T. : 6.835 min  
 Response: 0  
 Conc: N.D.



#37 AR-1262-2

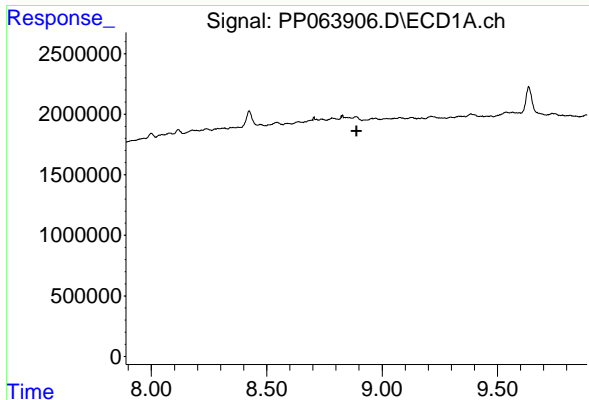
R.T.: 8.472 min  
 Delta R.T.: 0.000 min  
 Response: 192670  
 Conc: 0.94 ng/ml



#37 AR-1262-2

R.T.: 7.031 min  
 Delta R.T.: -0.010 min  
 Response: 284448  
 Conc: 1.78 ng/ml

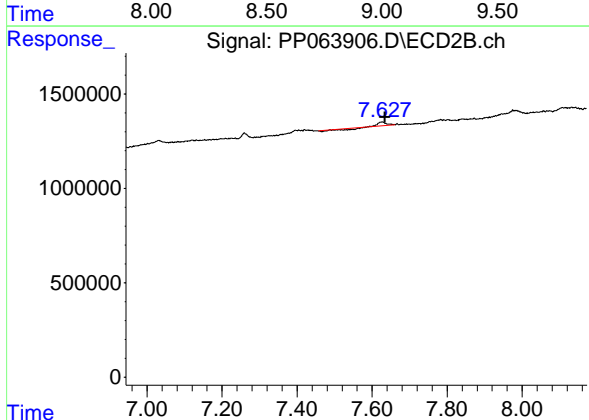




#39 AR-1262-4

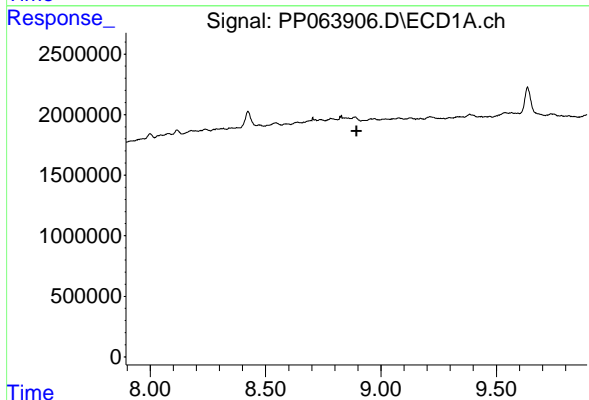
R.T.: 0.000 min  
 Exp R.T.: 8.889 min  
 Response: 0  
 Conc: N.D.

Instrument :  
 ECD\_P  
 ClientSampleId :



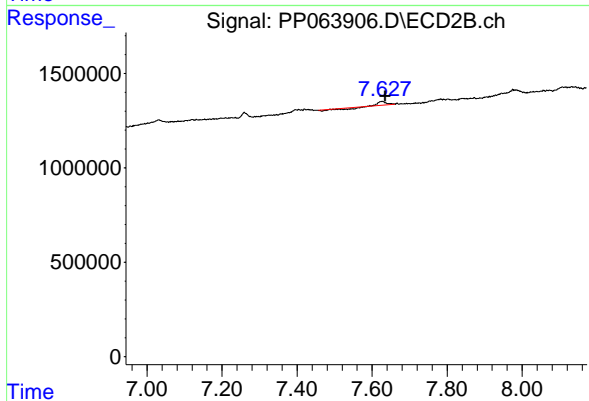
#39 AR-1262-4

R.T.: 7.627 min  
 Delta R.T.: -0.007 min  
 Response: 37259  
 Conc: 0.17 ng/ml



#42 AR-1268-2

R.T.: 0.000 min  
 Exp R.T.: 8.893 min  
 Response: 0  
 Conc: N.D.



#42 AR-1268-2

R.T.: 7.627 min  
 Delta R.T.: -0.008 min  
 Response: 37259  
 Conc: 0.11 ng/ml