

Data Path : Z:\pestpcbsrv\HPCHEM1\ECD\_P\Data\PP032824\  
 Data File : PP063920.D  
 Signal(s) : Signal #1: ECD1A.ch Signal #2: ECD2B.ch  
 Acq On : 28 Mar 2024 22:36  
 Operator : YP\AJ  
 Sample : P1875-01  
 Misc :  
 ALS Vial : 28 Sample Multiplier: 1

Instrument :  
 ECD\_P  
 ClientSampleId :

Integration File signal 1: autoint1.e  
 Integration File signal 2: autoint2.e  
 Quant Time: Mar 29 01:35:06 2024  
 Quant Method : Z:\pestpcbsrv\HPCHEM1\ECD\_P\methods\PP031924.M  
 Quant Title : GC EXTRACTABLES  
 QLast Update : Tue Mar 19 06:23:02 2024  
 Response via : Initial Calibration  
 Integrator: ChemStation

Volume Inj. : 2 µl  
 Signal #1 Phase : ZB-MR1 Signal #2 Phase: ZB-MR2  
 Signal #1 Info : 30Mx0.32mmx 0.50µ Signal #2 Info : 30M x 0.32mm x 0.25µm

Compound	RT#1	RT#2	Resp#1	Resp#2	ng/ml	ng/ml
-----						
System Monitoring Compounds						
1) SA Tetrachlo...	4.487	3.639	50472728	52395264	21.152	21.945
2) SA Decachlor...	10.357	8.672	54408265	52516607	21.429	19.433
Target Compounds						
7) L1 AR-1016-5	0.000	5.180	0	845998	N.D.	12.170 #
9) L2 AR-1221-2	0.000	3.939	0	888502	N.D.	43.354 #
15) L3 AR-1232-5	0.000	5.180	0	845998	N.D.	28.671 #
24) L5 AR-1248-4	0.000	5.180	0	845998	N.D.	9.770 #
-----						

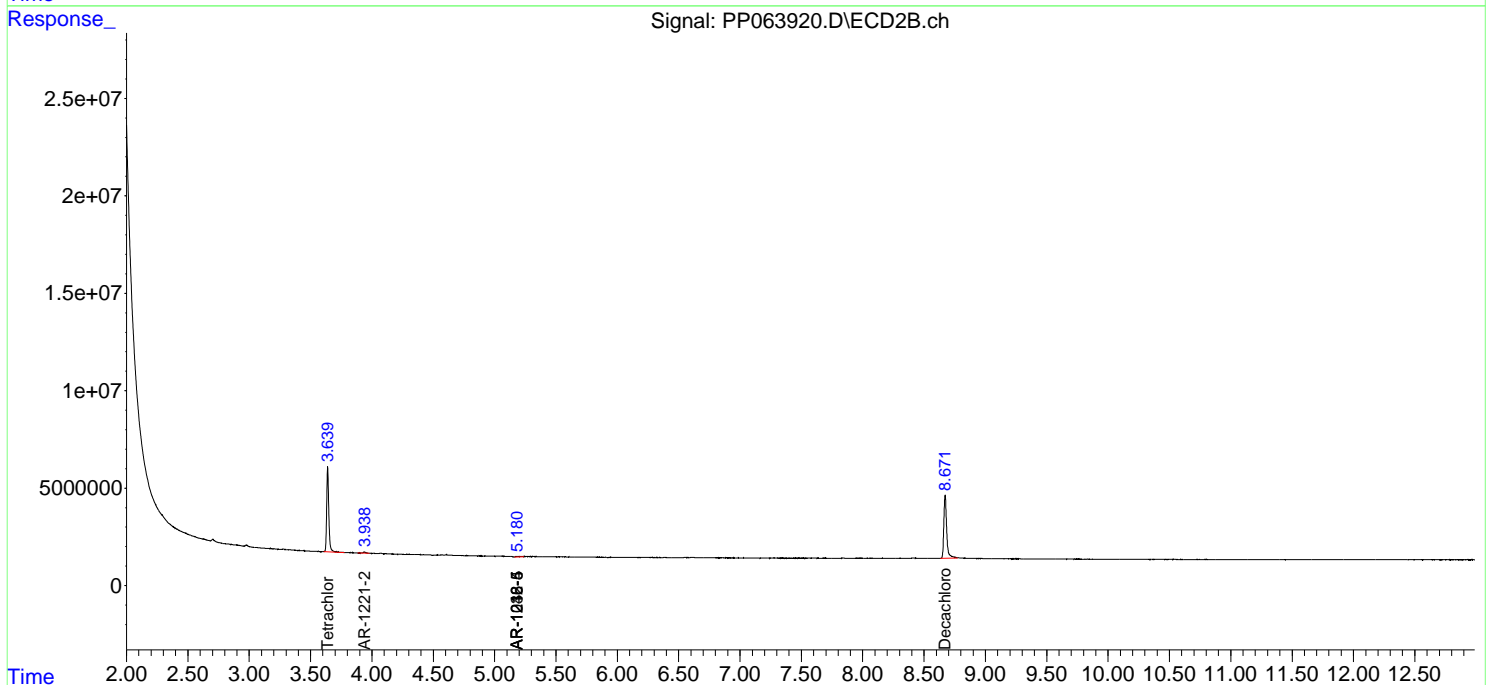
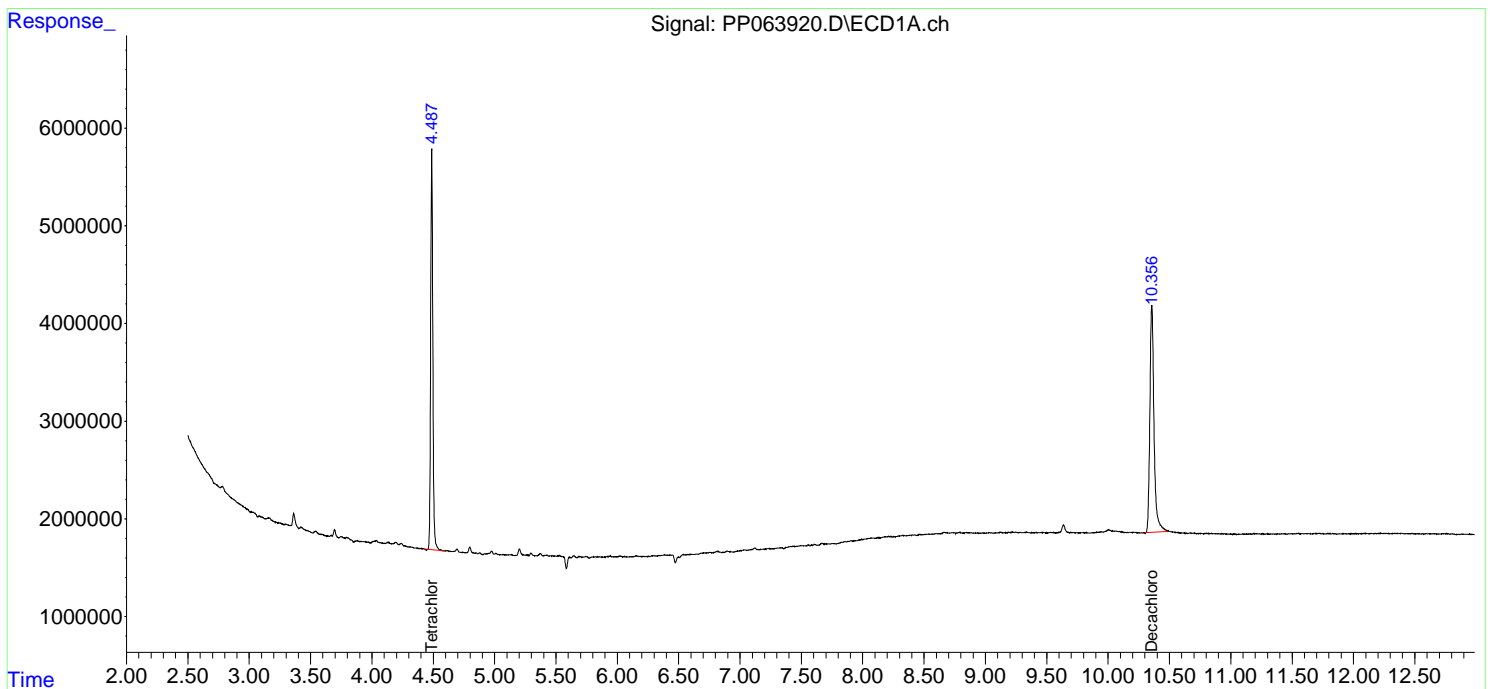
(f)=RT Delta > 1/2 Window (#)=Amounts differ by > 25% (m)=manual int.

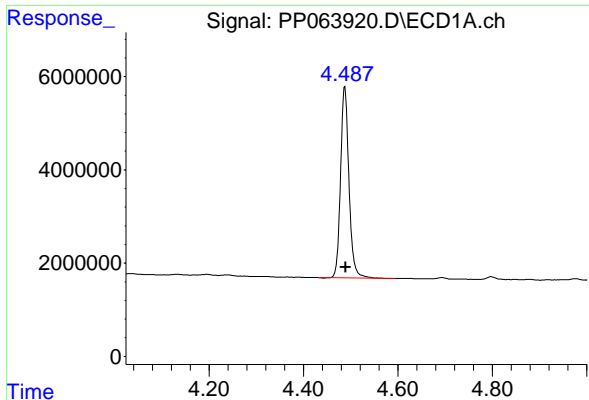
Data Path : Z:\pestpcbsrv\HPCHEM1\ECD\_P\Data\PP032824\  
 Data File : PP063920.D  
 Signal(s) : Signal #1: ECD1A.ch Signal #2: ECD2B.ch  
 Acq On : 28 Mar 2024 22:36  
 Operator : YP\AJ  
 Sample : P1875-01  
 Misc :  
 ALS Vial : 28 Sample Multiplier: 1

Instrument :  
 ECD\_P  
 ClientSampleId :

Integration File signal 1: autoint1.e  
 Integration File signal 2: autoint2.e  
 Quant Time: Mar 29 01:35:06 2024  
 Quant Method : Z:\pestpcbsrv\HPCHEM1\ECD\_P\methods\PP031924.M  
 Quant Title : GC EXTRACTABLES  
 QLast Update : Tue Mar 19 06:23:02 2024  
 Response via : Initial Calibration  
 Integrator: ChemStation

Volume Inj. : 2 µl  
 Signal #1 Phase : ZB-MR1 Signal #2 Phase: ZB-MR2  
 Signal #1 Info : 30Mx0.32mmx 0.50µm Signal #2 Info : 30M x 0.32mm x 0.25µm

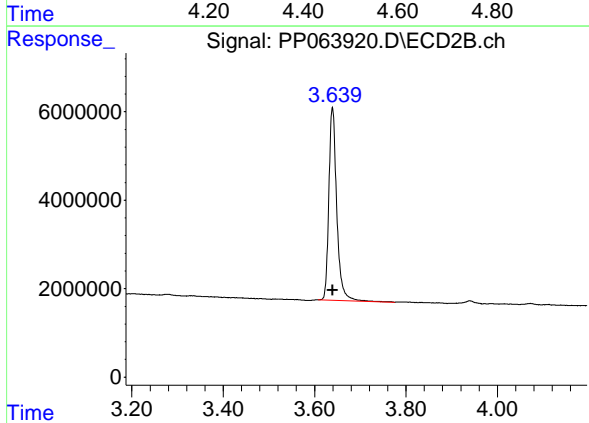




#1 Tetrachloro-m-xylene

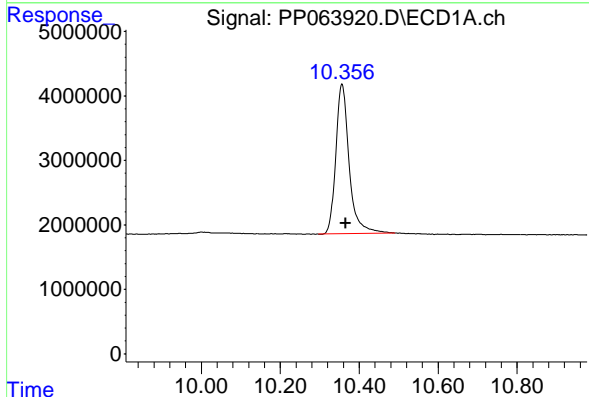
R.T.: 4.487 min  
Delta R.T.: -0.002 min  
Response: 50472728  
Conc: 21.15 ng/ml

Instrument :  
ECD\_P  
ClientSampleId :



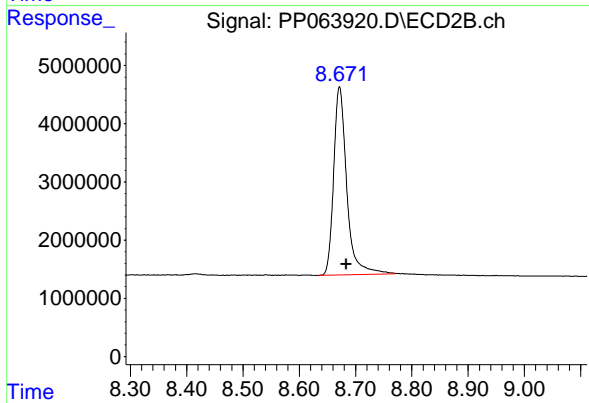
#1 Tetrachloro-m-xylene

R.T.: 3.639 min  
Delta R.T.: 0.000 min  
Response: 52395264  
Conc: 21.95 ng/ml



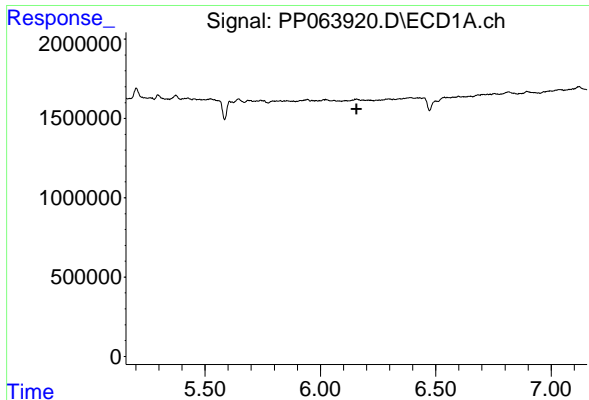
#2 Decachlorobiphenyl

R.T.: 10.357 min  
Delta R.T.: -0.009 min  
Response: 54408265  
Conc: 21.43 ng/ml



#2 Decachlorobiphenyl

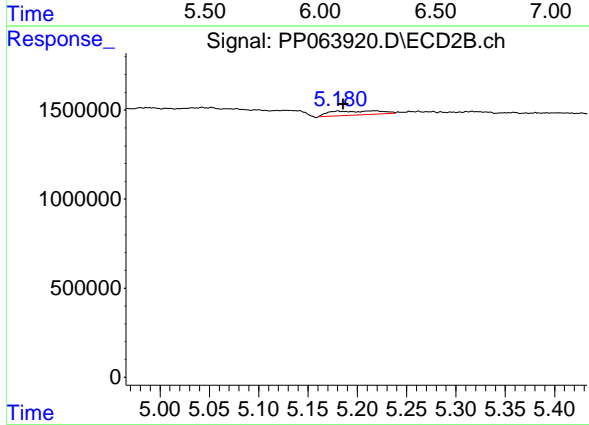
R.T.: 8.672 min  
Delta R.T.: -0.012 min  
Response: 52516607  
Conc: 19.43 ng/ml



#7 AR-1016-5

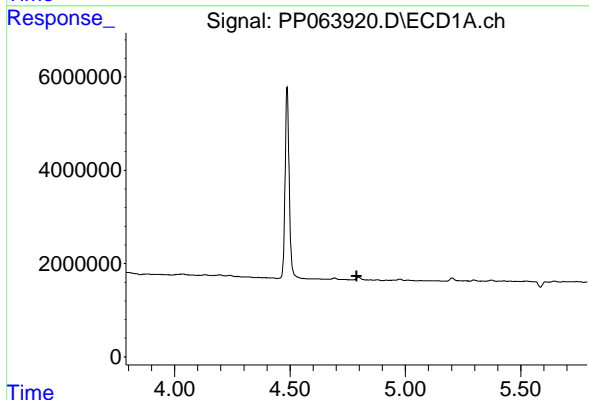
R.T.: 0.000 min  
 Exp R.T.: 6.157 min  
 Response: 0  
 Conc: N.D.

Instrument :  
 ECD\_P  
 ClientSampleId :



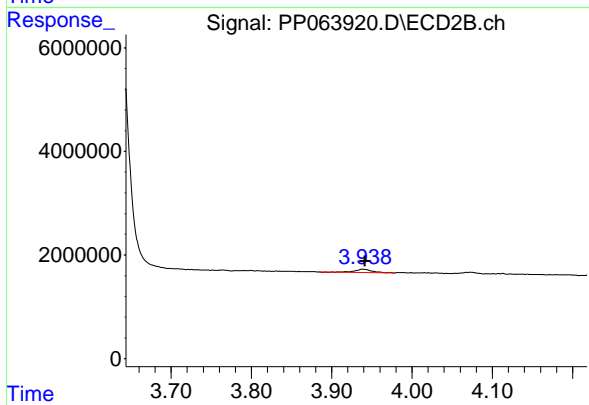
#7 AR-1016-5

R.T.: 5.180 min  
 Delta R.T.: -0.006 min  
 Response: 845998  
 Conc: 12.17 ng/ml



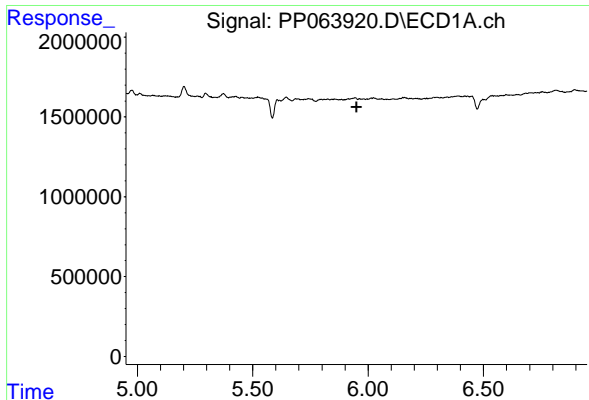
#9 AR-1221-2

R.T.: 0.000 min  
 Exp R.T.: 4.789 min  
 Response: 0  
 Conc: N.D.



#9 AR-1221-2

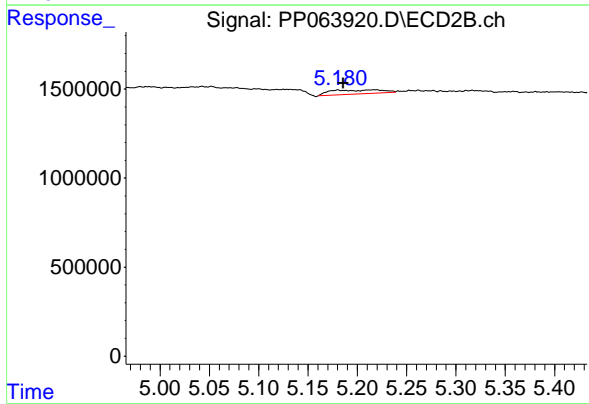
R.T.: 3.939 min  
 Delta R.T.: -0.003 min  
 Response: 888502  
 Conc: 43.35 ng/ml



#15 AR-1232-5

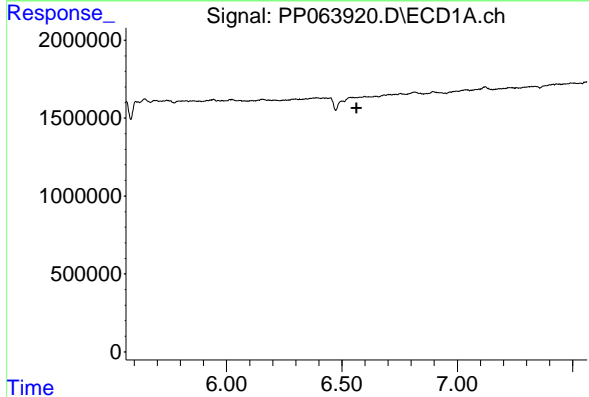
R.T.: 0.000 min  
 Exp R.T.: 5.950 min  
 Response: 0  
 Conc: N.D.

Instrument :  
 ECD\_P  
 ClientSampleId :



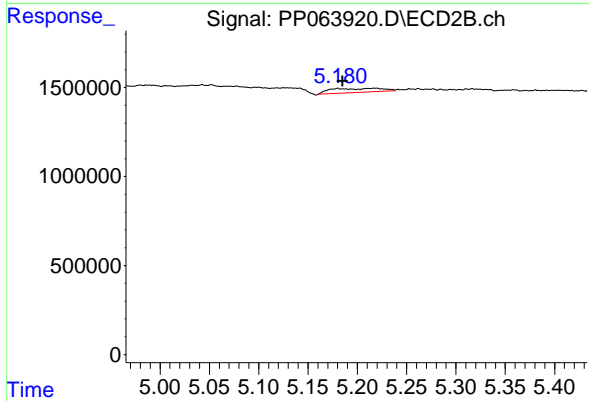
#15 AR-1232-5

R.T.: 5.180 min  
 Delta R.T.: -0.005 min  
 Response: 845998  
 Conc: 28.67 ng/ml



#24 AR-1248-4

R.T.: 0.000 min  
 Exp R.T.: 6.563 min  
 Response: 0  
 Conc: N.D.



#24 AR-1248-4

R.T.: 5.180 min  
 Delta R.T.: -0.005 min  
 Response: 845998  
 Conc: 9.77 ng/ml