

Data Path : P:\HPCHEM1\ECD P\Data\PP032918\
 Data File : PP024731.D
 Signal(s) : Signal #1: ECD1A.CH Signal #2: ECD2B.CH
 Acq On : 30 Mar 2018 3:19
 Operator : UA/AJ
 Sample : J1754-18
 Misc :
 ALS Vial : 30 Sample Multiplier: 1

Instrument :
 ECD_P
ClientSampleId :
 CL-02-032718-D

Manual Integrations
APPROVED
 UGO
 3/30/2018 11:56:44 AM

Integration File signal 1: autoint1.e
 Integration File signal 2: autoint2.e
 Quant Time: Mar 30 07:51:32 2018
 Quant Method : P:\HPCHEM1\ECD_P\methods\PP032918.M
 Quant Title : 8080.M
 QLast Update : Fri Mar 30 01:06:07 2018
 Response via : Initial Calibration
 Integrator: ChemStation 6890 Scale Mode: Large solvent peaks clipped

Volume Inj. : 2 ul
 Signal #1 Phase : Rtx-CLPesticides Signal #2 Phase: Rtx-CLPesticides2
 Signal #1 Info : 30M x 0.32mm x0.5 Signal #2 Info : 30M x 0.32mm x 0.25µm

Compound	RT#1	RT#2	Resp#1	Resp#2	nq/ml	nq/ml

System Monitoring Compounds						
4) S 2,4-DCAA	11.440	11.164	135.9E6	134.3E6	256.681m	226.375m

Target Compounds

 (f)=RT Delta > 1/2 Window (#)=Amounts differ by > 25% (m)=manual int.

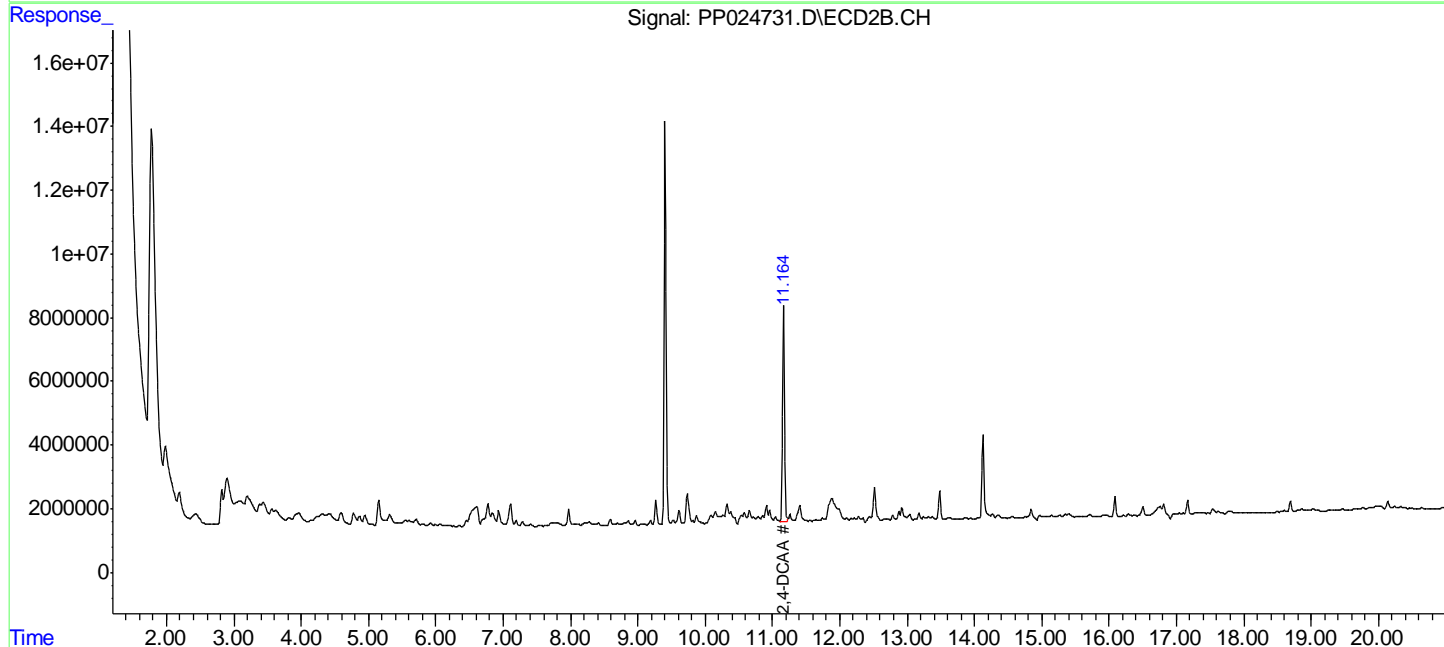
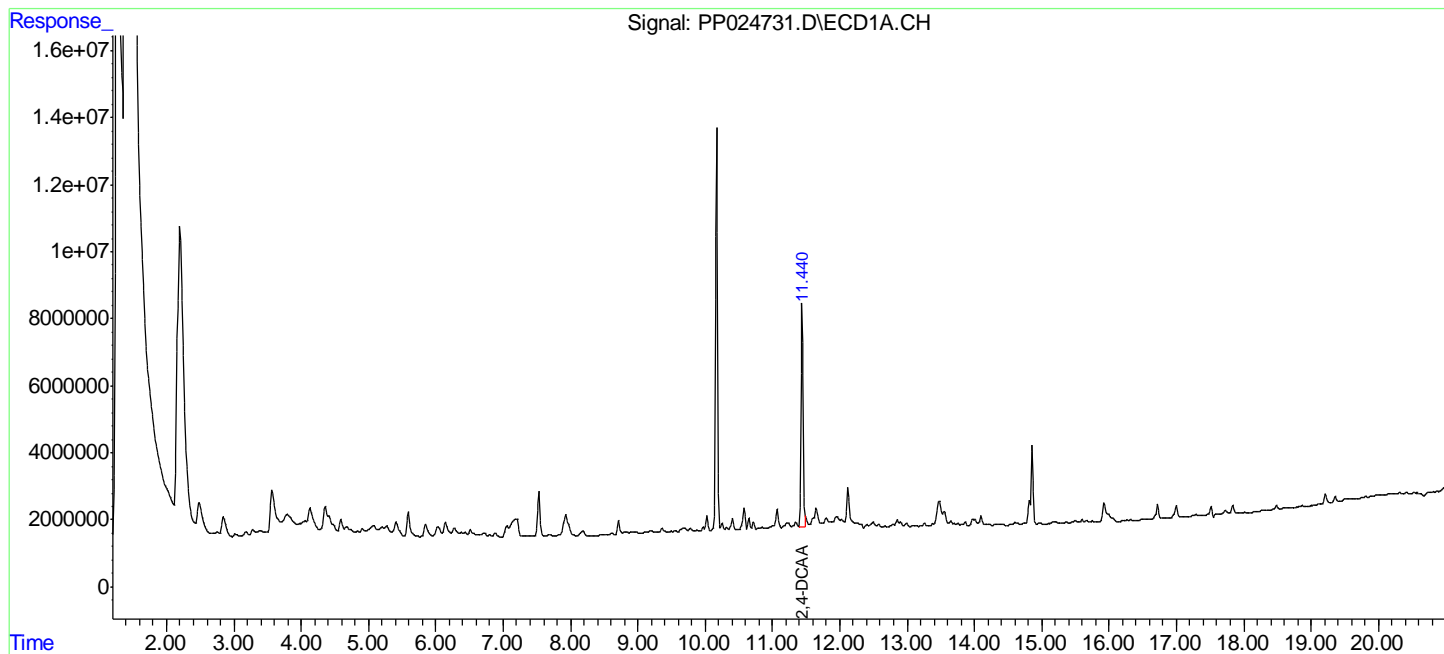
Data Path : P:\HPCHEM1\ECD P\Data\PP032918\
 Data File : PP024731.D
 Signal(s) : Signal #1: ECD1A.CH Signal #2: ECD2B.CH
 Acq On : 30 Mar 2018 3:19
 Operator : UA/AJ
 Sample : J1754-18
 Misc :
 ALS Vial : 30 Sample Multiplier: 1

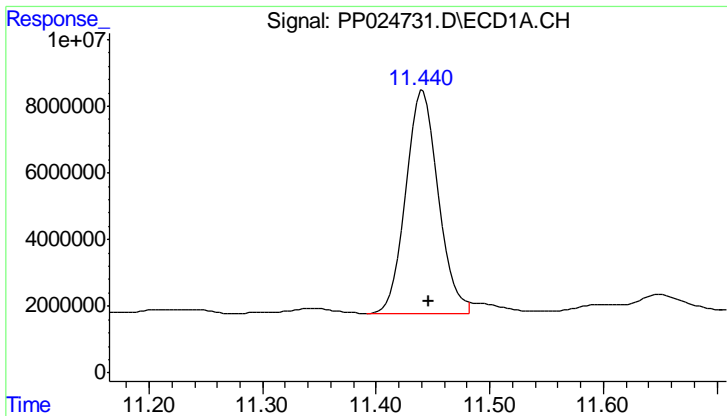
Instrument :
 ECD_P
 Client Sampled :
 CL-02-032718-D

Manual Integrations
APPROVED
 UGO
 3/30/2018 11:56:44 AM

Integration File signal 1: autoint1.e
 Integration File signal 2: autoint2.e
 Quant Time: Mar 30 07:51:32 2018
 Quant Method : P:\HPCHEM1\ECD_P\methods\PP032918.M
 Quant Title : 8080.M
 QLast Update : Fri Mar 30 01:06:07 2018
 Response via : Initial Calibration
 Integrator: ChemStation 6890 Scale Mode: Large solvent peaks clipped

Volume Inj. : 2 ul
 Signal #1 Phase : Rtx-CLPesticides Signal #2 Phase: Rtx-CLPesticides2
 Signal #1 Info : 30M x 0.32mm x0.5 Signal #2 Info : 30M x 0.32mm x 0.25µm





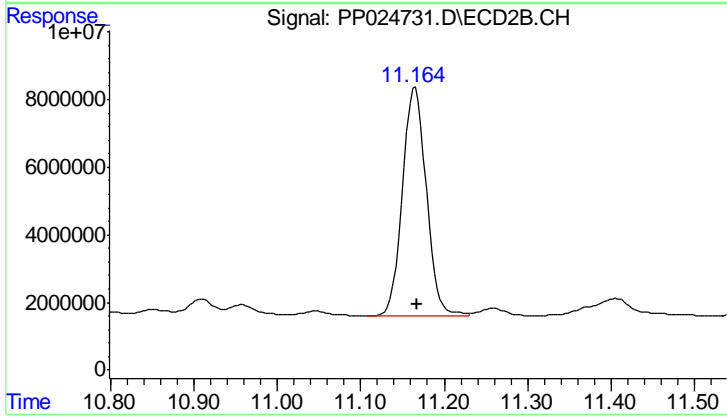
#4 2,4-DCAA

R.T.: 11.440 min
Delta R.T.: -0.006 min
Response: 135854259
Conc: 256.68 ng/ml

Instrument :
ECD_P
ClientSampleId :
CL-02-032718-D

Manual Integrations
APPROVED

UGO
3/30/2018 11:56:44 AM



#4 2,4-DCAA

R.T.: 11.164 min
Delta R.T.: -0.004 min
Response: 134334148
Conc: 226.38 ng/ml m