

Data Path : P:\HPCHEM1\ECD P\Data\PP032918\
 Data File : PP024733.D
 Signal(s) : Signal #1: ECD1A.CH Signal #2: ECD2B.CH
 Acq On : 30 Mar 2018 4:10
 Operator : UA/AJ
 Sample : J1754-20MS
 Misc :
 ALS Vial : 32 Sample Multiplier: 1

Instrument :
 ECD_P
ClientSampleId :
 CL-02-032718-EMS

Manual Integrations
APPROVED
 UGO
 3/30/2018 11:56:59 AM

Integration File signal 1: autoint1.e
 Integration File signal 2: autoint2.e
 Quant Time: Mar 30 07:55:33 2018
 Quant Method : P:\HPCHEM1\ECD_P\methods\PP032918.M
 Quant Title : 8080.M
 QLast Update : Fri Mar 30 01:06:07 2018
 Response via : Initial Calibration
 Integrator: ChemStation 6890 Scale Mode: Large solvent peaks clipped

Volume Inj. : 2 ul
 Signal #1 Phase : Rtx-CLPesticides Signal #2 Phase: Rtx-CLPesticides2
 Signal #1 Info : 30M x 0.32mm x0.5 Signal #2 Info : 30M x 0.32mm x 0.25µm

Compound	RT#1	RT#2	Resp#1	Resp#2	nq/ml	nq/ml

System Monitoring Compounds						
4) S 2,4-DCAA	11.441	11.166	189.6E6	190.4E6	358.305	320.884
Target Compounds						
1) T Dalapon	2.893	2.473	266.7E6	280.9E6	345.721	331.789
2) T 3,5-DICHL...	9.837	9.289	376.5E6	378.1E6	456.841	468.986
3) T 4-Nitroph...	11.015	10.325	4165622	8489701	11.378m	23.789 #
5) T DICAMBA	11.759	11.458	1206.6E6	1150.6E6	488.857	498.139m
6) T MCPP	12.100	11.665	96696886	62004689	61.996	43.242 #
7) T MCPA	12.353	12.055	108.9E6	91059204	46.802	43.160
8) T DICHLORPROP	12.952	12.571	295.1E6	299.3E6	495.962	508.269
9) T 2,4-D	13.313	13.056	361.8E6	398.7E6	493.961	525.184
10) T Pentachlo...	13.695	13.606	3509.8E6	3370.0E6	373.921m	379.688
11) T 2,4,5-TP ...	14.570	14.209	1912.2E6	1984.9E6	453.319	534.101
12) T 2,4,5-T	14.970	14.835	1751.9E6	1358.1E6	480.779	455.217
13) T 2,4-DB	15.716	15.433	214.9E6	213.4E6	473.663m	504.202
14) T DINOSEB	17.190	15.830	627.3E6	570.6E6	226.302	233.351
15) T Picloram	16.996	17.166	2520.2E6	2225.0E6	430.604	462.337
16) T DCPA	17.560	17.046	1704.6E6	1639.9E6	352.105	379.314

(f)=RT Delta > 1/2 Window (#)=Amounts differ by > 25% (m)=manual int.

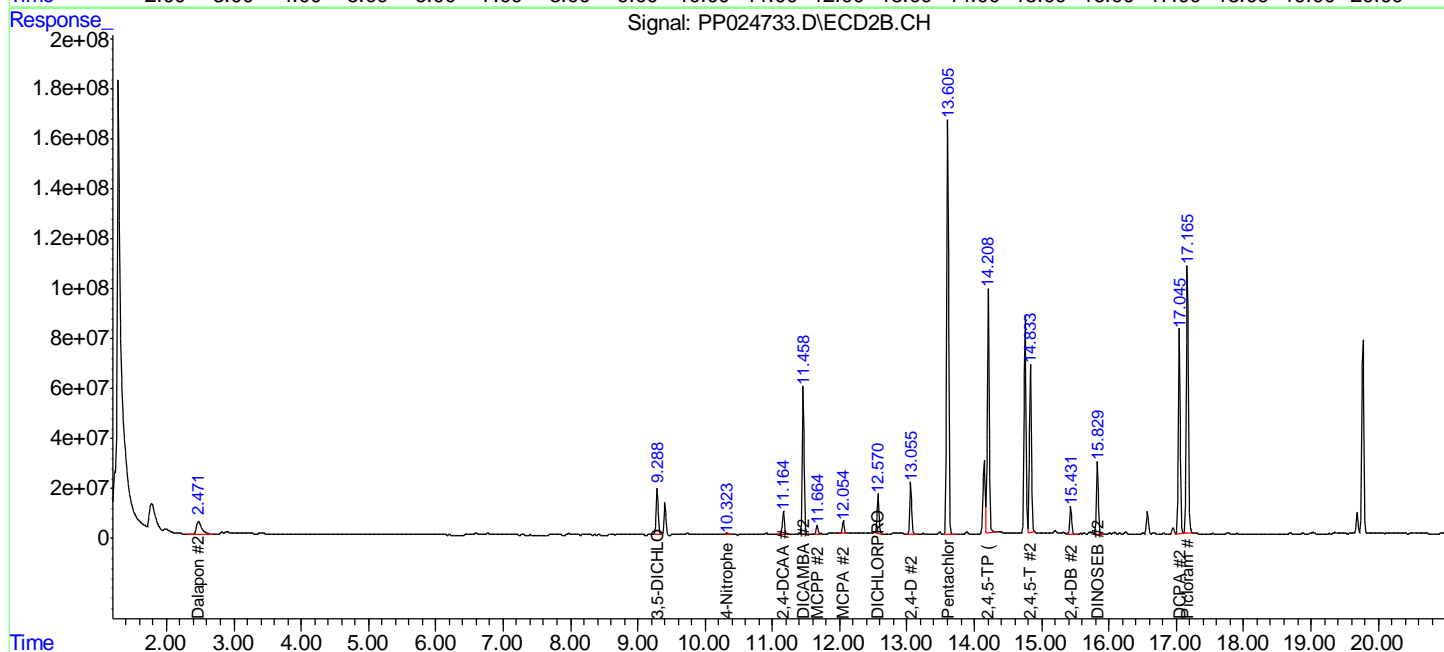
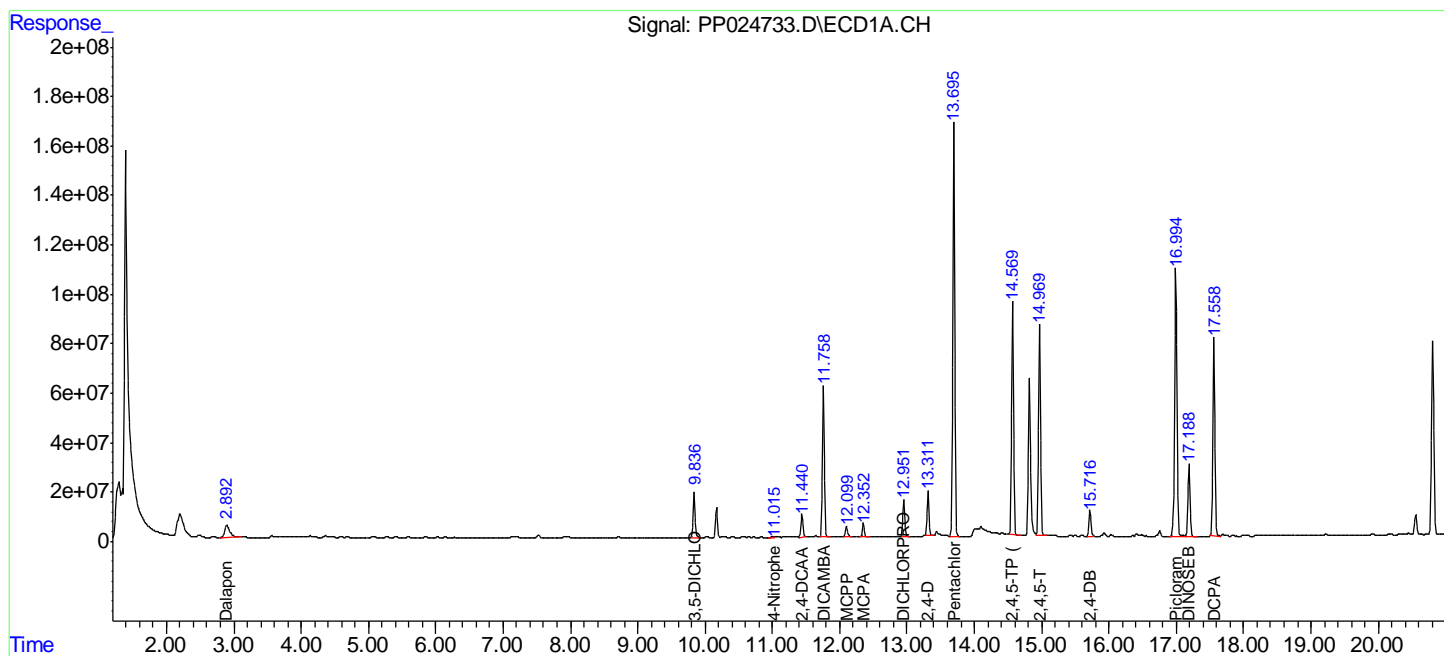
Data Path : P:\HPCHEM1\ECD P\Data\PP032918\
 Data File : PP024733.D
 Signal(s) : Signal #1: ECD1A.CH Signal #2: ECD2B.CH
 Acq On : 30 Mar 2018 4:10
 Operator : UA/AJ
 Sample : J1754-20MS
 Misc :
 ALS Vial : 32 Sample Multiplier: 1

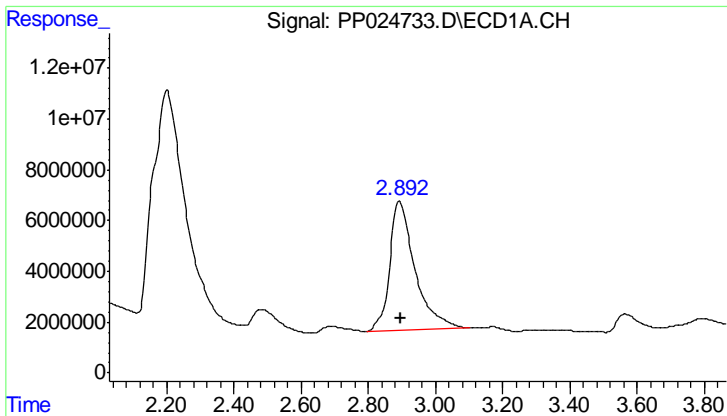
Instrument :
 ECD_P
 Client Sampled :
 CL-02-032718-EMS

Manual Integrations
APPROVED
 UGO
 3/30/2018 11:56:59 AM

Integration File signal 1: autoint1.e
 Integration File signal 2: autoint2.e
 Quant Time: Mar 30 07:55:33 2018
 Quant Method : P:\HPCHEM1\ECD_P\methods\PP032918.M
 Quant Title : 8080.M
 QLast Update : Fri Mar 30 01:06:07 2018
 Response via : Initial Calibration
 Integrator: ChemStation 6890 Scale Mode: Large solvent peaks clipped

Volume Inj. : 2 ul
 Signal #1 Phase : Rtx-CLPesticides Signal #2 Phase: Rtx-CLPesticides2
 Signal #1 Info : 30M x 0.32mm x0.5 Signal #2 Info : 30M x 0.32mm x 0.25µm





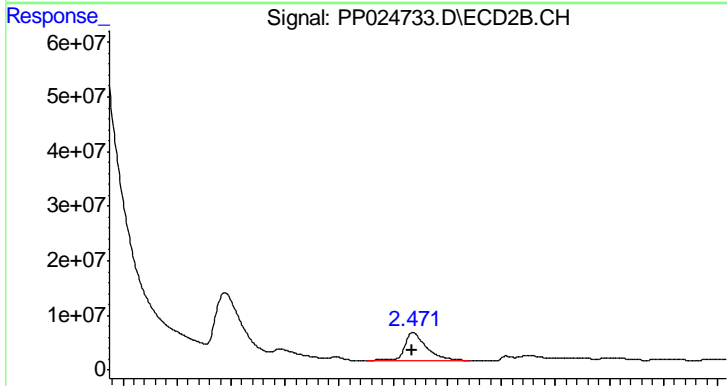
#1 Dalapon

R.T.: 2.893 min
 Delta R.T.: -0.003 min
 Response: 266678483
 Conc: 345.72 ng/ml

Instrument :
 ECD_P
 ClientSampleId :
 CL-02-032718-EMS

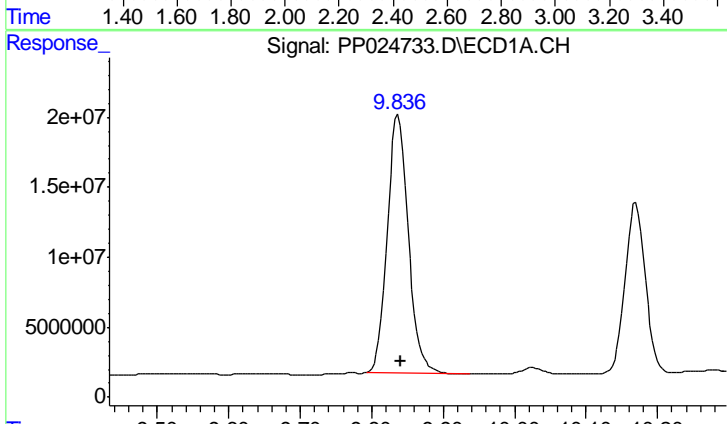
Manual Integrations
 APPROVED

UGO
 3/30/2018 11:56:59 AM



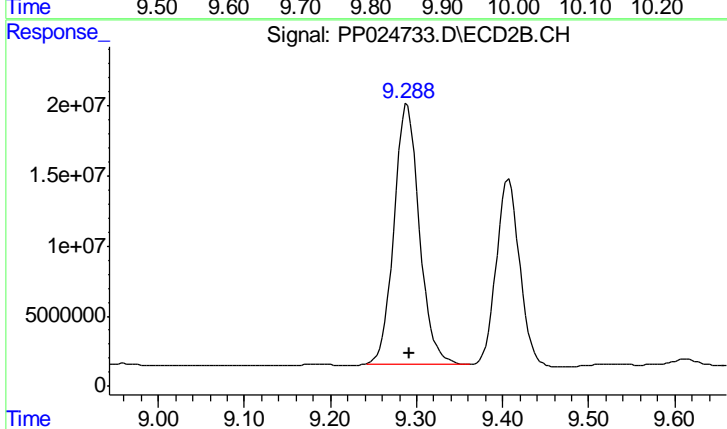
#1 Dalapon

R.T.: 2.473 min
 Delta R.T.: 0.001 min
 Response: 280859678
 Conc: 331.79 ng/ml



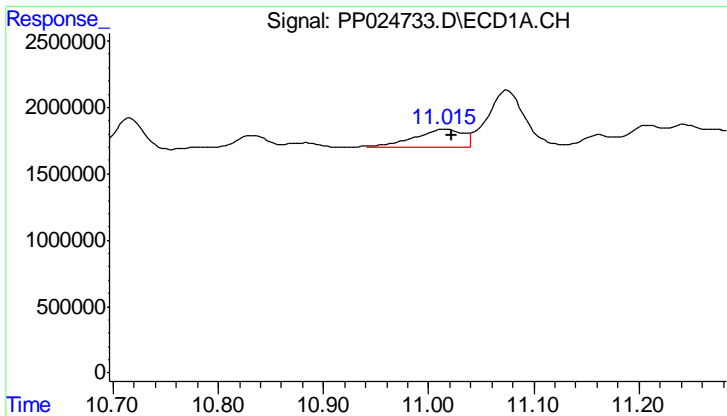
#2 3,5-DICHLOROBENZOIC ACID

R.T.: 9.837 min
 Delta R.T.: -0.004 min
 Response: 376511567
 Conc: 456.84 ng/ml



#2 3,5-DICHLOROBENZOIC ACID

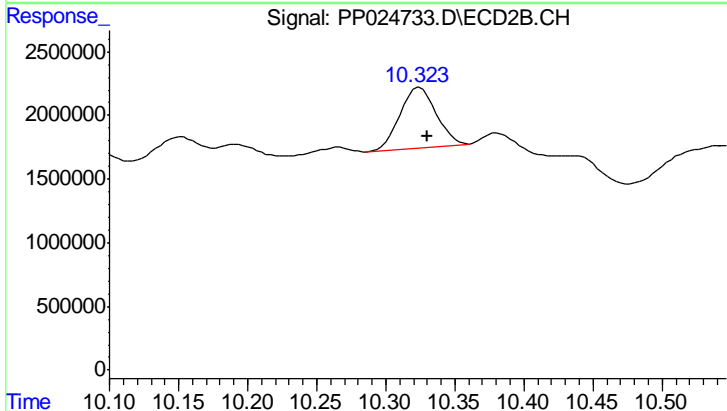
R.T.: 9.289 min
 Delta R.T.: -0.003 min
 Response: 378067194
 Conc: 468.99 ng/ml



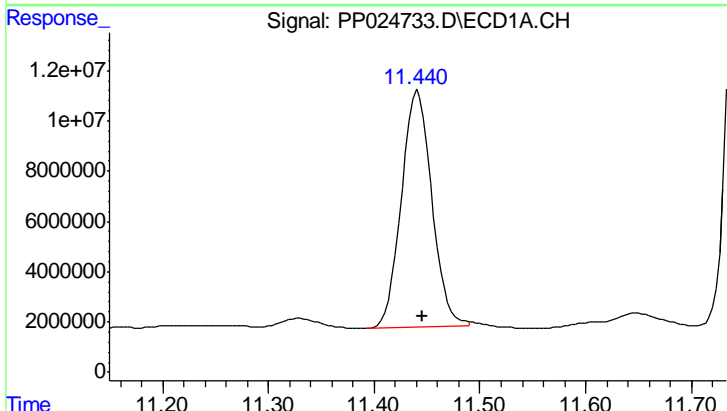
#3 4-Nitrophenol
 R.T.: 11.015 min
 Delta R.T.: -0.007 min
 Response: 4165622
 Conc: 11.38 ng/ml

Instrument :
 ECD_P
ClientSampleId :
 CL-02-032718-EMS

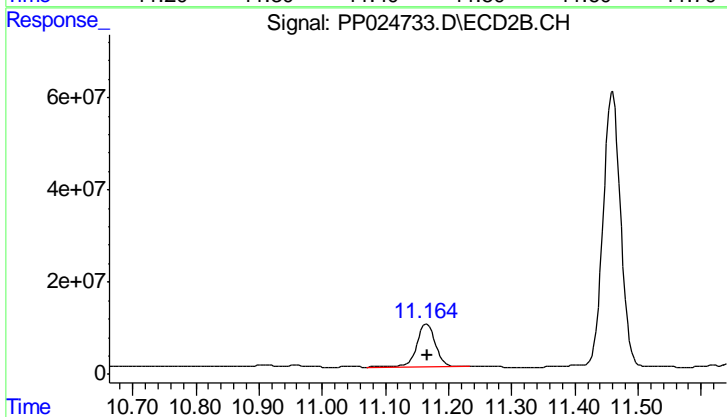
Manual Integrations
APPROVED
 UGO
 3/30/2018 11:56:59 AM



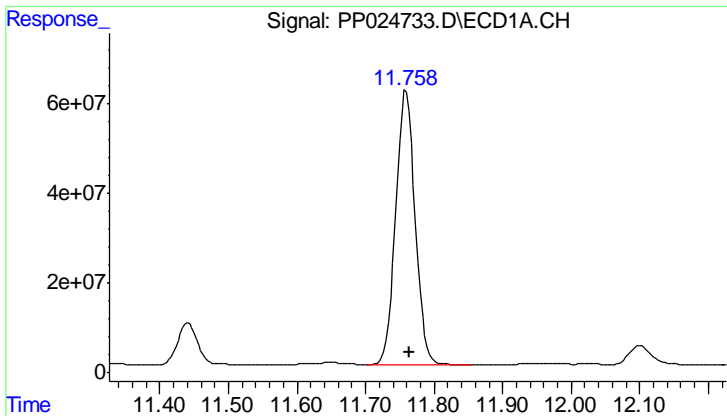
#3 4-Nitrophenol
 R.T.: 10.325 min
 Delta R.T.: -0.006 min
 Response: 8489701
 Conc: 23.79 ng/ml



#4 2,4-DCAA
 R.T.: 11.441 min
 Delta R.T.: -0.005 min
 Response: 189641160
 Conc: 358.31 ng/ml



#4 2,4-DCAA
 R.T.: 11.166 min
 Delta R.T.: -0.002 min
 Response: 190416675
 Conc: 320.88 ng/ml



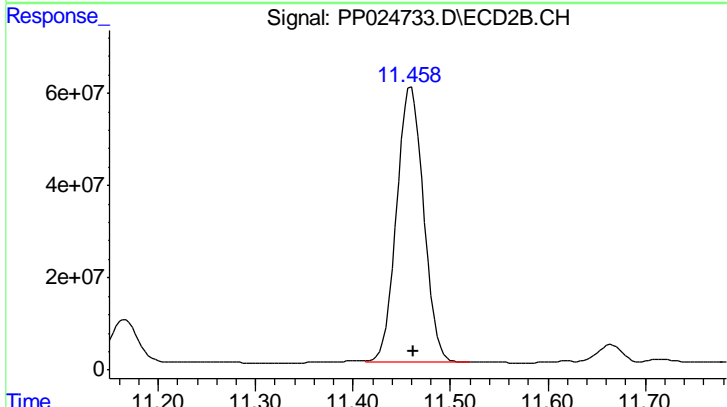
#5 DICAMBA

R.T.: 11.759 min
 Delta R.T.: -0.004 min
 Response: 1206587534
 Conc: 488.86 ng/ml

Instrument :
 ECD_P
 ClientSampleId :
 CL-02-032718-EMS

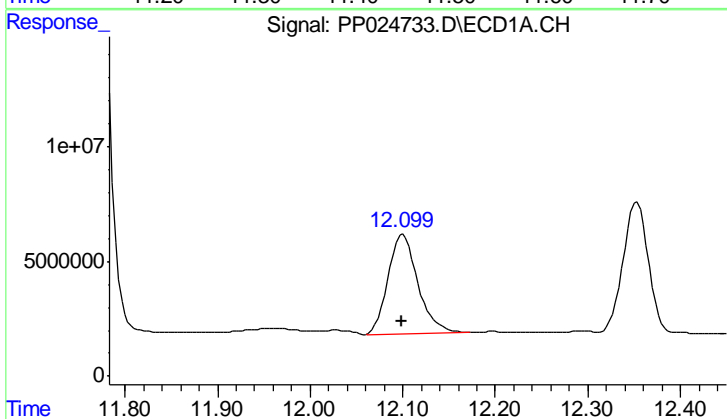
Manual Integrations
 APPROVED

UGO
 3/30/2018 11:56:59 AM



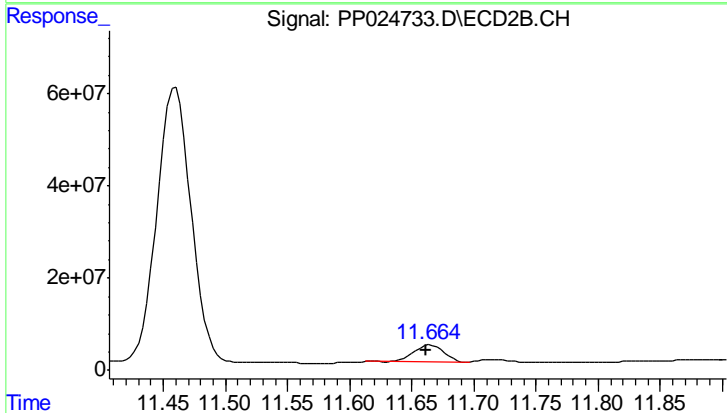
#5 DICAMBA

R.T.: 11.458 min
 Delta R.T.: -0.003 min
 Response: 1150593383
 Conc: 498.14 ng/ml m



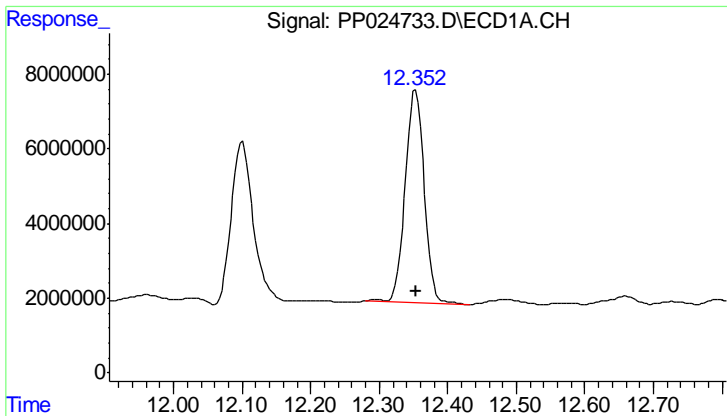
#6 MCPP

R.T.: 12.100 min
 Delta R.T.: 0.002 min
 Response: 96696886
 Conc: 62.00 ug/ml



#6 MCPP

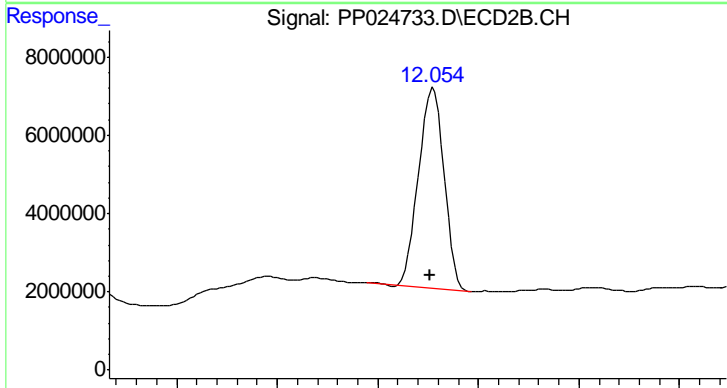
R.T.: 11.665 min
 Delta R.T.: 0.004 min
 Response: 62004689
 Conc: 43.24 ug/ml



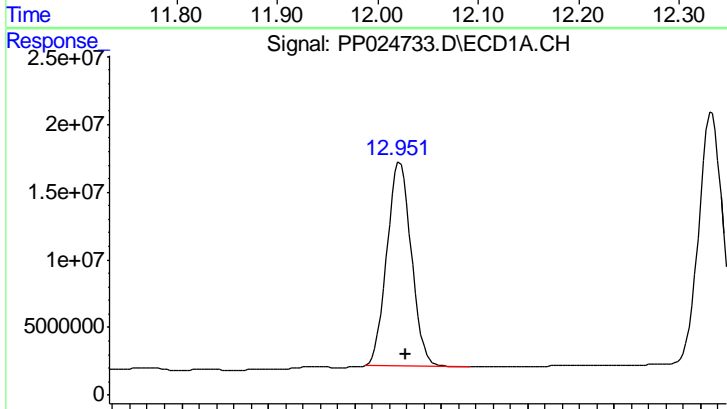
#7 MCPA
 R.T.: 12.353 min
 Delta R.T.: 0.000 min
 Response: 108854398
 Conc: 46.80 ug/ml

Instrument :
 ECD_P
 ClientSampled :
 CL-02-032718-EMS

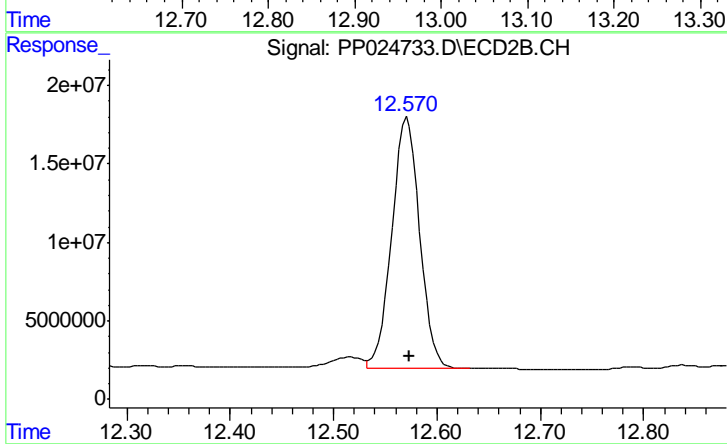
Manual Integrations
 APPROVED
 UGO
 3/30/2018 11:56:59 AM



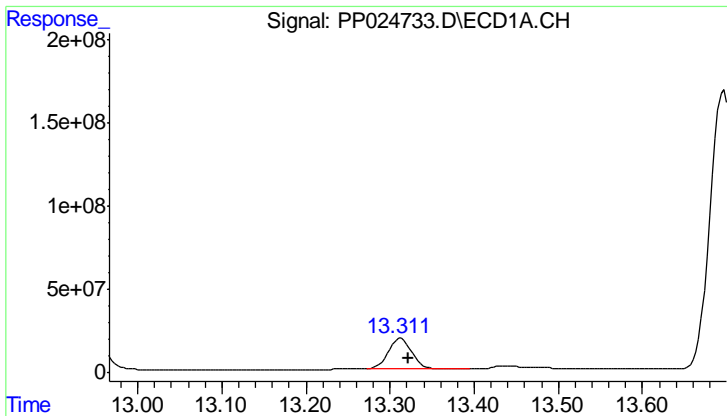
#7 MCPA
 R.T.: 12.055 min
 Delta R.T.: 0.004 min
 Response: 91059204
 Conc: 43.16 ug/ml



#8 DICHLORPROP
 R.T.: 12.952 min
 Delta R.T.: -0.006 min
 Response: 295074384
 Conc: 495.96 ng/ml



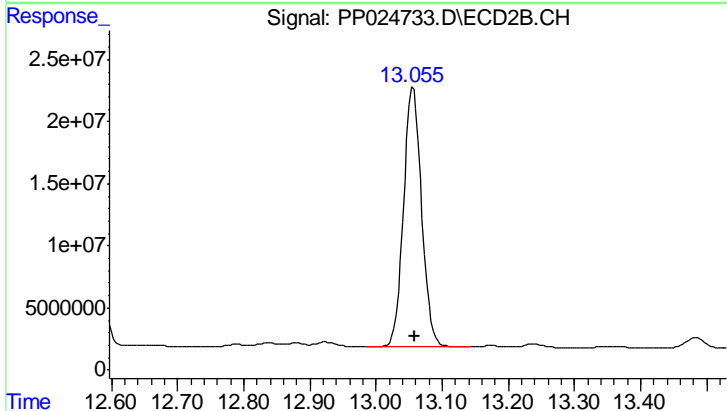
#8 DICHLORPROP
 R.T.: 12.571 min
 Delta R.T.: -0.002 min
 Response: 299329682
 Conc: 508.27 ng/ml



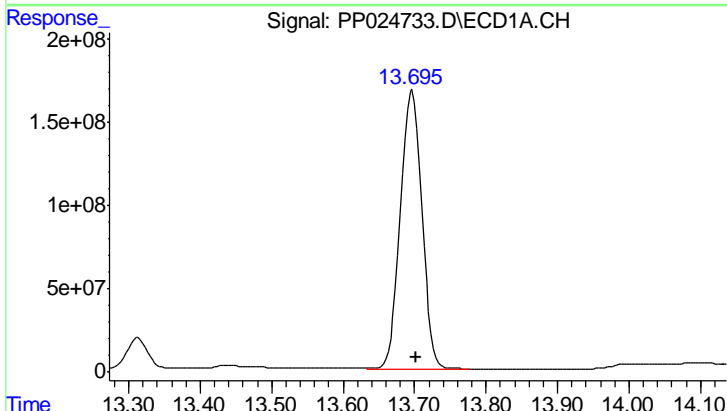
#9 2,4-D
 R.T.: 13.313 min
 Delta R.T.: -0.009 min
 Response: 361842188
 Conc: 493.96 ng/ml

Instrument :
 ECD_P
ClientSampled :
 CL-02-032718-EMS

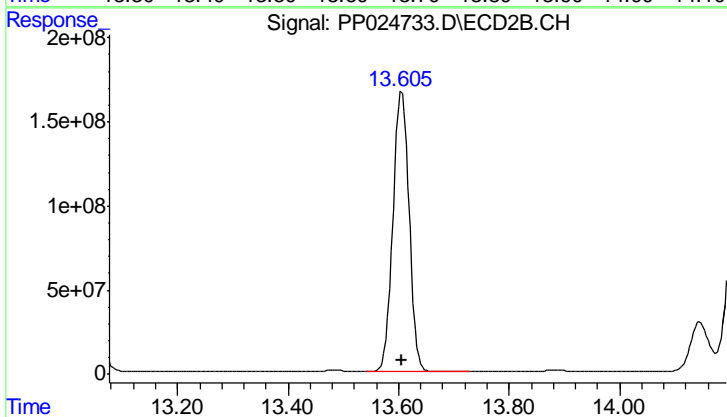
Manual Integrations
APPROVED
 UGO
 3/30/2018 11:56:59 AM



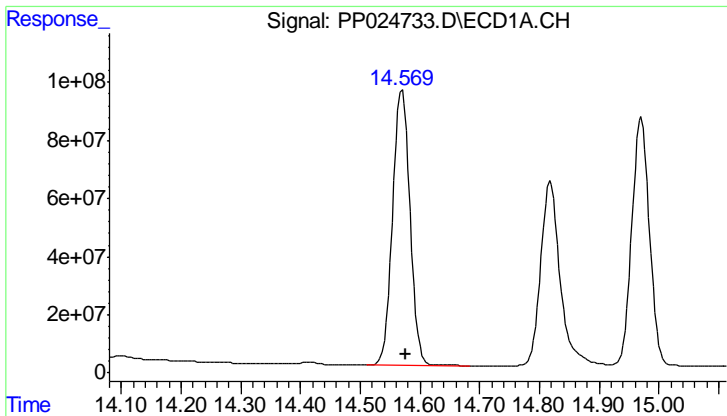
#9 2,4-D
 R.T.: 13.056 min
 Delta R.T.: -0.003 min
 Response: 398690778
 Conc: 525.18 ng/ml



#10 Pentachlorophenol
 R.T.: 13.695 min
 Delta R.T.: -0.007 min
 Response: 3509807009
 Conc: 373.92 ng/ml m



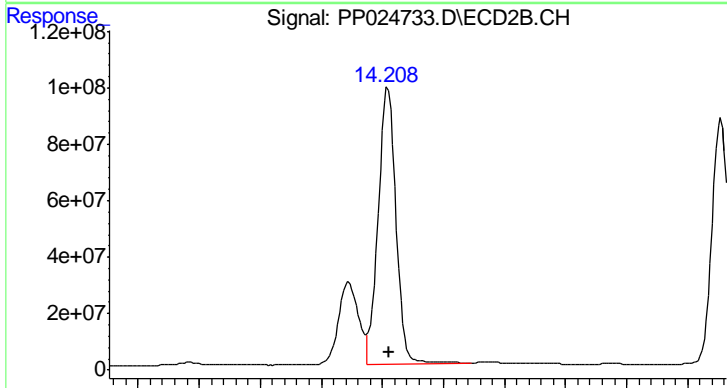
#10 Pentachlorophenol
 R.T.: 13.606 min
 Delta R.T.: 0.000 min
 Response: 3370005636
 Conc: 379.69 ng/ml



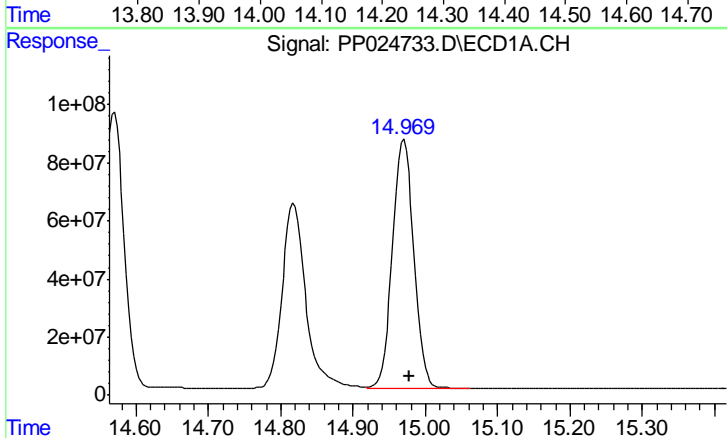
#11 2,4,5-TP (SILVEX)
 R.T.: 14.570 min
 Delta R.T.: -0.007 min
 Response: 1912177960
 Conc: 453.32 ng/ml

Instrument :
 ECD_P
ClientSampled :
 CL-02-032718-EMS

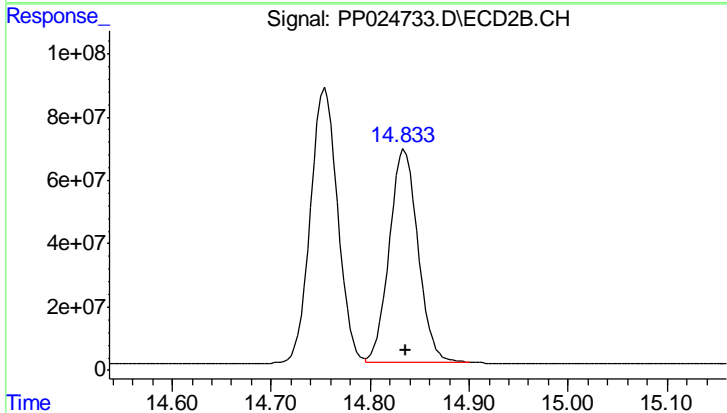
Manual Integrations
APPROVED
 UGO
 3/30/2018 11:56:59 AM



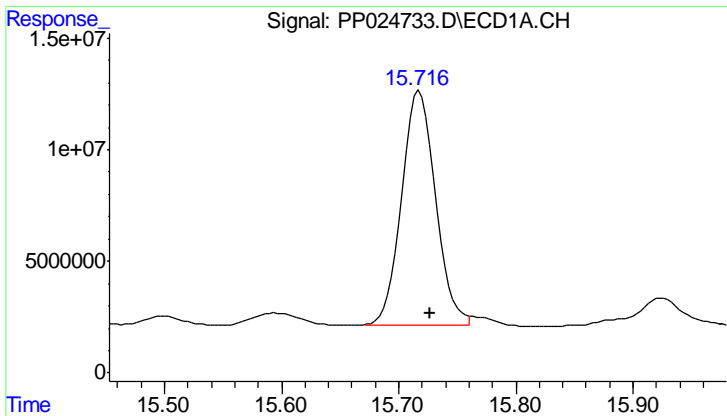
#11 2,4,5-TP (SILVEX)
 R.T.: 14.209 min
 Delta R.T.: -0.001 min
 Response: 1984910643
 Conc: 534.10 ng/ml



#12 2,4,5-T
 R.T.: 14.970 min
 Delta R.T.: -0.008 min
 Response: 1751870667
 Conc: 480.78 ng/ml



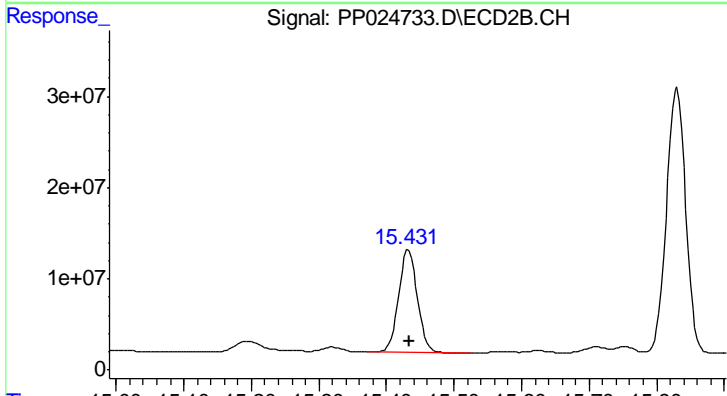
#12 2,4,5-T
 R.T.: 14.835 min
 Delta R.T.: 0.000 min
 Response: 1358050023
 Conc: 455.22 ng/ml



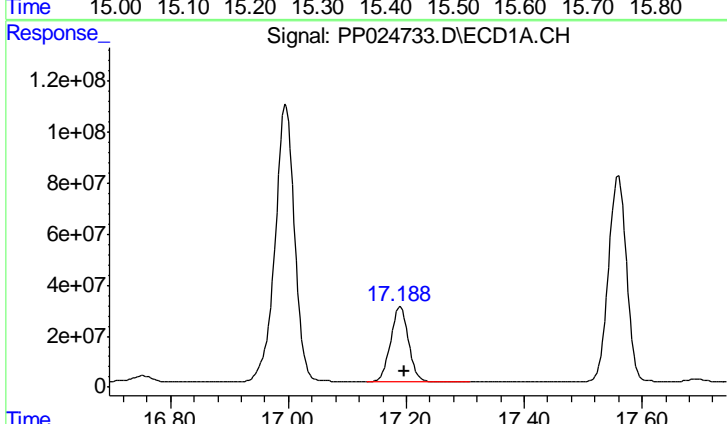
#13 2,4-DB
 R.T.: 15.716 min
 Delta R.T.: -0.010 min
 Response: 214944977
 Conc: 473.66 ng/ml

Instrument :
 ECD_P
 ClientSampled :
 CL-02-032718-EMS

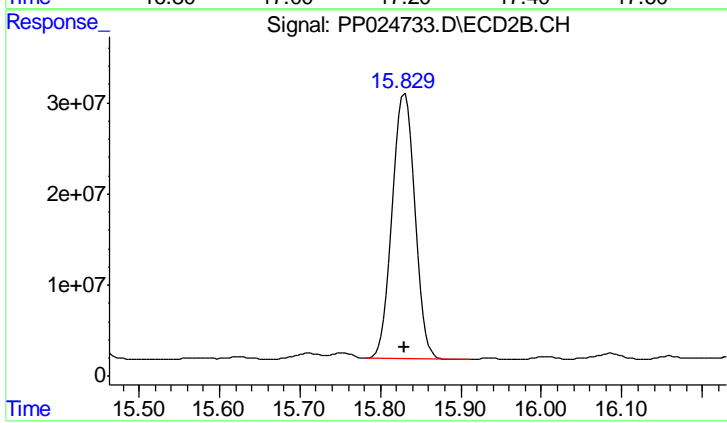
Manual Integrations
 APPROVED
 UGO
 3/30/2018 11:56:59 AM



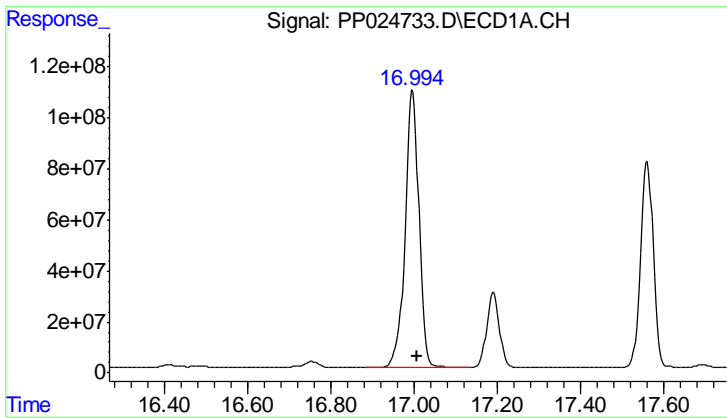
#13 2,4-DB
 R.T.: 15.433 min
 Delta R.T.: -0.002 min
 Response: 213440288
 Conc: 504.20 ng/ml



#14 DINOSEB
 R.T.: 17.190 min
 Delta R.T.: -0.007 min
 Response: 627252221
 Conc: 226.30 ng/ml



#14 DINOSEB
 R.T.: 15.830 min
 Delta R.T.: 0.000 min
 Response: 570571103
 Conc: 233.35 ng/ml



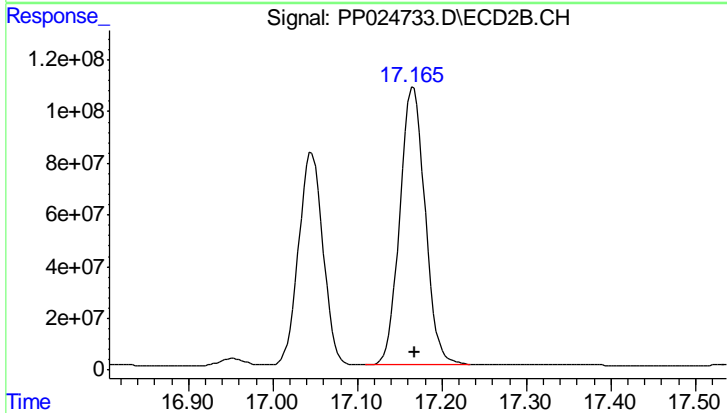
#15 Picloram

R.T.: 16.996 min
 Delta R.T.: -0.010 min
 Response: 2520198665
 Conc: 430.60 ng/ml

Instrument :
 ECD_P
 ClientSampled :
 CL-02-032718-EMS

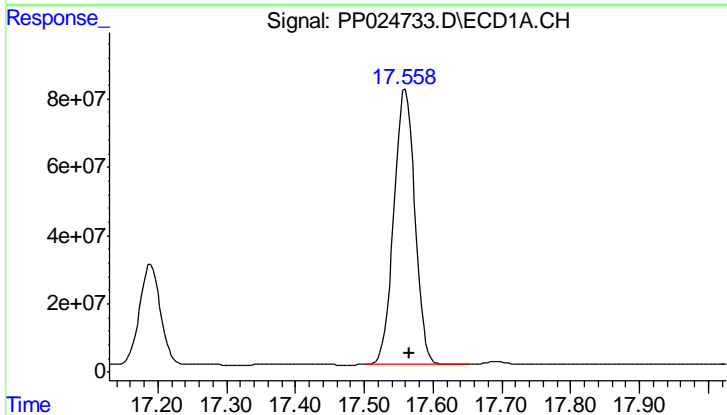
Manual Integrations
 APPROVED

UGO
 3/30/2018 11:56:59 AM



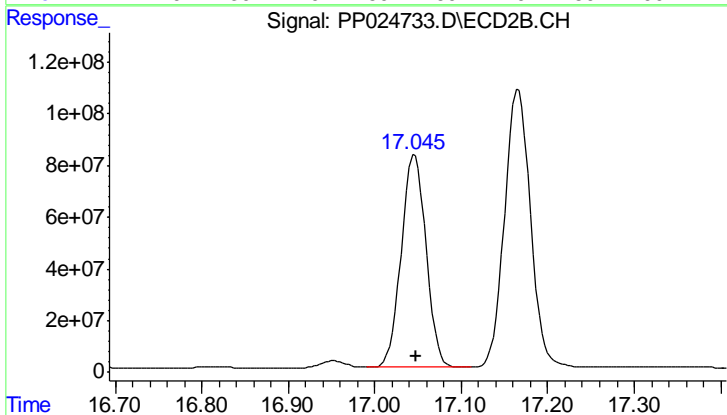
#15 Picloram

R.T.: 17.166 min
 Delta R.T.: -0.002 min
 Response: 2224952455
 Conc: 462.34 ng/ml



#16 DCPA

R.T.: 17.560 min
 Delta R.T.: -0.006 min
 Response: 1704566716
 Conc: 352.11 ng/ml



#16 DCPA

R.T.: 17.046 min
 Delta R.T.: -0.001 min
 Response: 1639882091
 Conc: 379.31 ng/ml