

Data Path : Z:\pestpcbsrv\HPCHEM1\ECD\_P\Data\PP033021\  
 Data File : PP034446.D  
 Signal(s) : Signal #1: ECD1A.CH Signal #2: ECD2B.CH  
 Acq On : 30 Mar 2021 13:19  
 Operator : DD\AJ  
 Sample : HEXANE  
 Misc :  
 ALS Vial : 1 Sample Multiplier: 1

Instrument :  
 ECD\_P  
 ClientSampleId :  
 HEXANE

Integration File signal 1: autoint1.e  
 Integration File signal 2: autoint2.e  
 Quant Time: Mar 31 06:03:31 2021  
 Quant Method : Z:\pestpcbsrv\HPCHEM1\ECD\_P\methods\PP033021.M  
 Quant Title : GC EXTRACTABLES  
 QLast Update : Wed Mar 31 06:02:19 2021  
 Response via : Initial Calibration  
 Integrator: ChemStation 6890 Scale Mode: Small noise peaks clipped

Volume Inj. : 2 µl  
 Signal #1 Phase : ZB-MR1 Signal #2 Phase: ZB-MR2  
 Signal #1 Info : 30Mx0.32mmx 0.50µ Signal #2 Info : 30M x 0.32mm x 0.25µm

Compound	RT#1	RT#2	Resp#1	Resp#2	ng/ml	ng/ml
----------	------	------	--------	--------	-------	-------

System Monitoring Compounds

Target Compounds

20)	L4	AR-1242-5	7.133	0.000	28802	0	19.559	N.D.	#
24)	L5	AR-1248-4	7.089	0.000	24085	0	9.438	N.D.	#
25)	L5	AR-1248-5	7.133	0.000	28802	0	11.303	N.D.	#
26)	L6	AR-1254-1	7.039f	0.000	1248	0	0.454	N.D.	#
27)	L6	AR-1254-2	7.273f	0.000	15326	0	3.604	N.D.	#
28)	L6	AR-1254-3	7.668	0.000	4399	0	0.964	N.D.	#
30)	L6	AR-1254-5	8.400	7.613	995	1483	0.280	0.730	#
32)	L7	AR-1260-2	8.118f	0.000	26100	0	6.950	N.D.	#
33)	L7	AR-1260-3	8.480	0.000	22758	0	7.529	N.D.	#
34)	L7	AR-1260-4	8.693	0.000	31850	0	9.123	N.D.	#
35)	L7	AR-1260-5	9.020	0.000	63657	0	8.889	N.D.	#
36)	L8	AR-1262-1	8.480	7.613	22758	1483	4.974	1.381	#
37)	L8	AR-1262-2	9.020	0.000	63657	0	8.159	N.D.	#
38)	L8	AR-1262-3	9.347f	0.000	13519	0	2.512	N.D.	#
40)	L8	AR-1262-5	10.065f	0.000	3144	0	1.092	N.D.	#
43)	L9	AR-1268-3	9.630	8.721	28249	8990	3.217	2.471	
44)	L9	AR-1268-4	10.065f	0.000	3144	0	0.984	N.D.	#

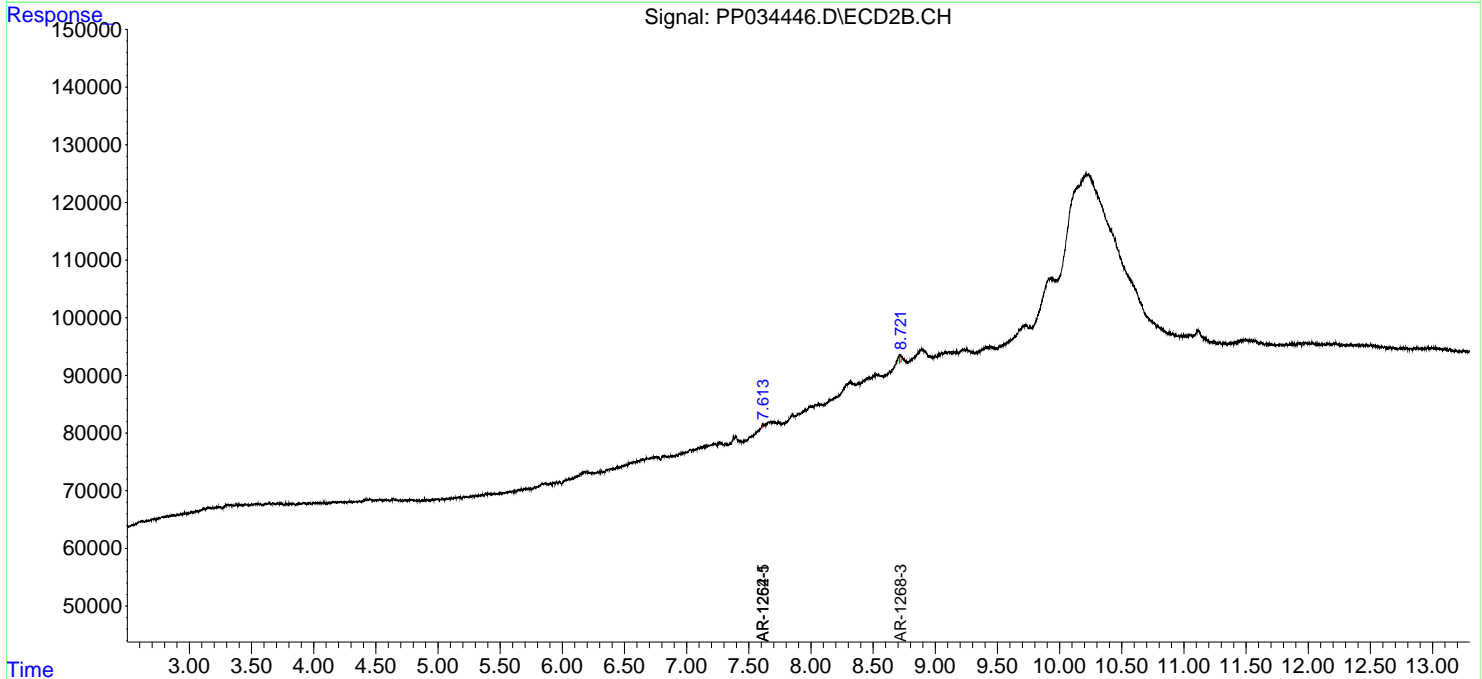
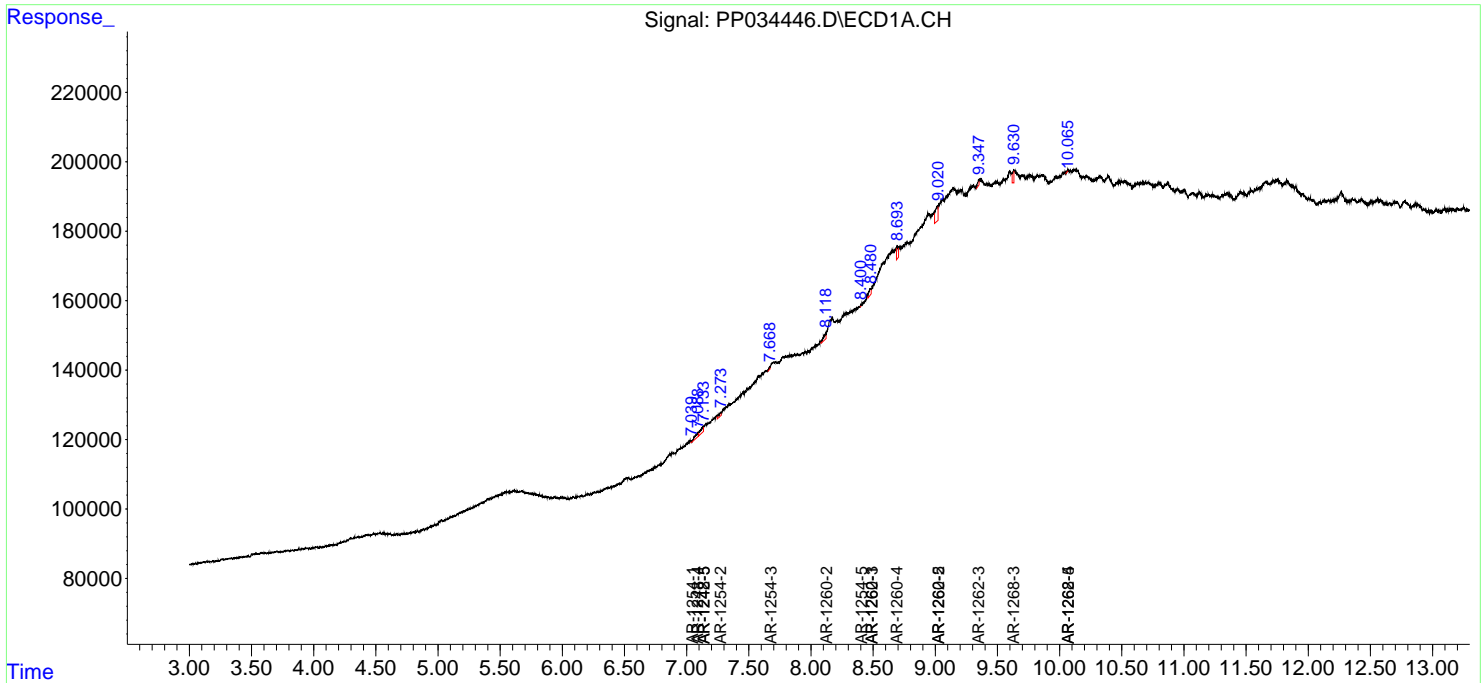
(f)=RT Delta > 1/2 Window (#)=Amounts differ by > 25% (m)=manual int.

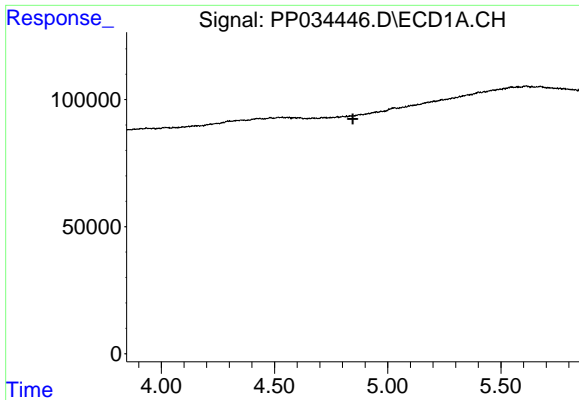
Data Path : Z:\pestpcbsrv\HPCHEM1\ECD\_P\Data\PP033021\  
 Data File : PP034446.D  
 Signal(s) : Signal #1: ECD1A.CH Signal #2: ECD2B.CH  
 Acq On : 30 Mar 2021 13:19  
 Operator : DD\AJ  
 Sample : HEXANE  
 Misc :  
 ALS Vial : 1 Sample Multiplier: 1

Instrument :  
 ECD\_P  
 ClientSampled :  
 HEXANE

Integration File signal 1: autoint1.e  
 Integration File signal 2: autoint2.e  
 Quant Time: Mar 31 06:03:31 2021  
 Quant Method : Z:\pestpcbsrv\HPCHEM1\ECD\_P\methods\PP033021.M  
 Quant Title : GC EXTRACTABLES  
 QLast Update : Wed Mar 31 06:02:19 2021  
 Response via : Initial Calibration  
 Integrator: ChemStation 6890 Scale Mode: Small noise peaks clipped

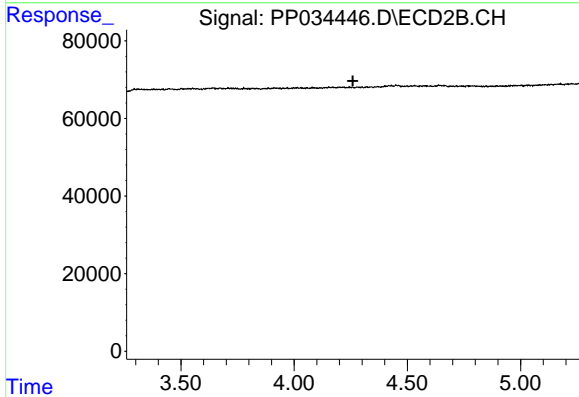
Volume Inj. : 2 µl  
 Signal #1 Phase : ZB-MR1 Signal #2 Phase: ZB-MR2  
 Signal #1 Info : 30Mx0.32mmx 0.50µ Signal #2 Info : 30M x 0.32mm x 0.25µm



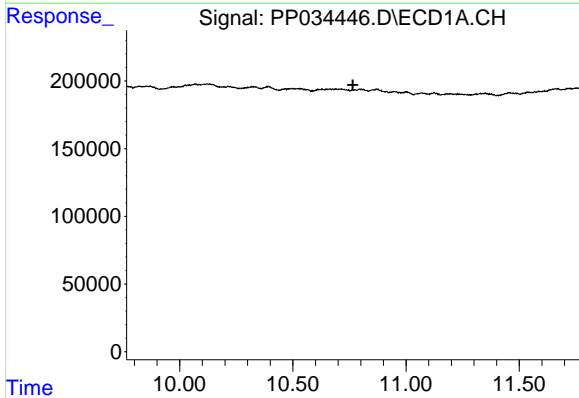


#1 Tetrachloro-m-xylene  
 R.T.: 0.000 min  
 Exp R.T. : 4.846 min  
 Response: 0  
 Conc: N.D.

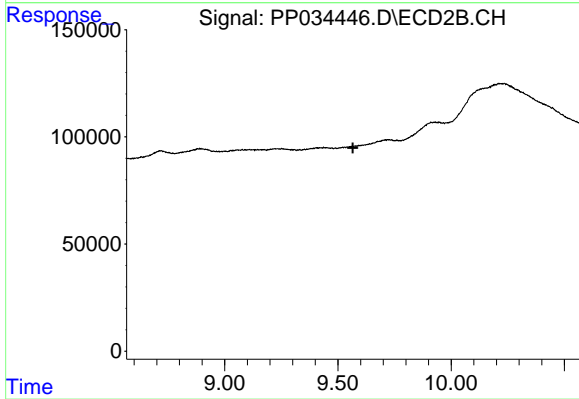
**Instrument :**  
 ECD\_P  
**ClientSampleId :**  
 HEXANE



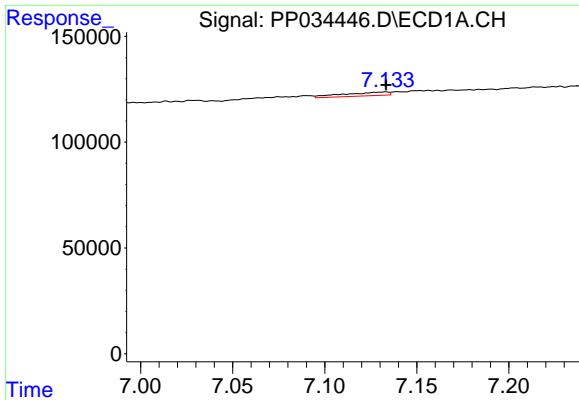
#1 Tetrachloro-m-xylene  
 R.T.: 0.000 min  
 Exp R.T. : 4.260 min  
 Response: 0  
 Conc: N.D.



#2 Decachlorobiphenyl  
 R.T.: 0.000 min  
 Exp R.T. : 10.765 min  
 Response: 0  
 Conc: N.D.

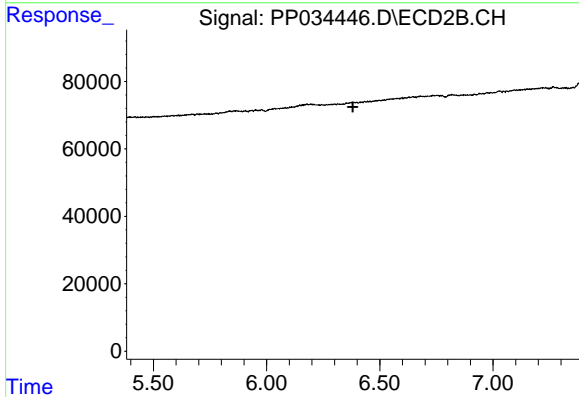


#2 Decachlorobiphenyl  
 R.T.: 0.000 min  
 Exp R.T. : 9.566 min  
 Response: 0  
 Conc: N.D.

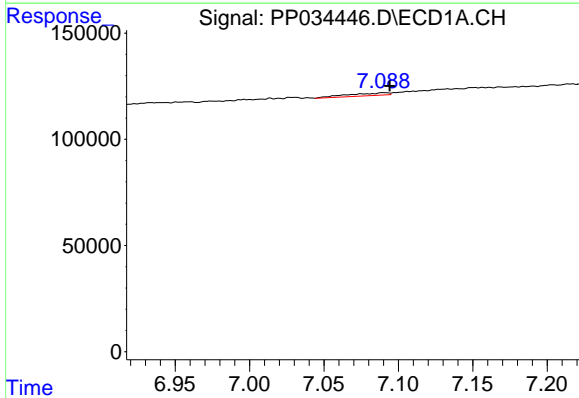


#20 AR-1242-5  
 R.T.: 7.133 min  
 Delta R.T.: 0.000 min  
 Response: 28802  
 Conc: 19.56 ng/ml

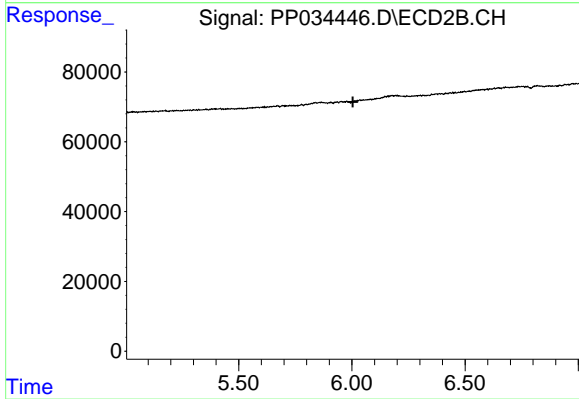
Instrument :  
 ECD\_P  
 ClientSampleId :  
 HEXANE



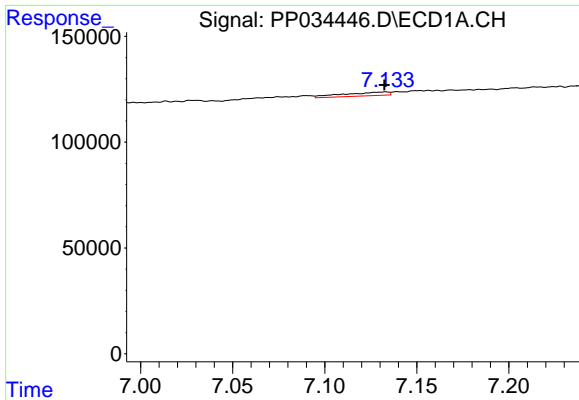
#20 AR-1242-5  
 R.T.: 0.000 min  
 Exp R.T. : 6.381 min  
 Response: 0  
 Conc: N.D.



#24 AR-1248-4  
 R.T.: 7.089 min  
 Delta R.T.: -0.005 min  
 Response: 24085  
 Conc: 9.44 ng/ml

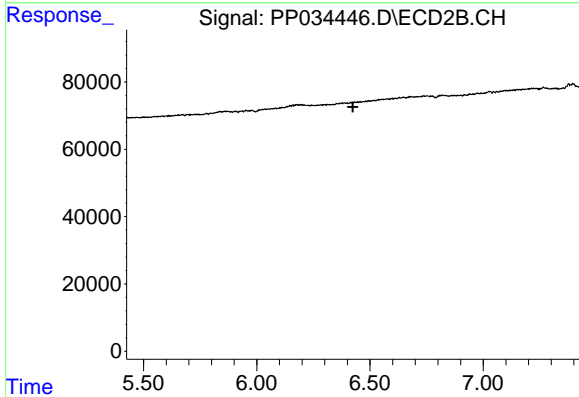


#24 AR-1248-4  
 R.T.: 0.000 min  
 Exp R.T. : 6.004 min  
 Response: 0  
 Conc: N.D.

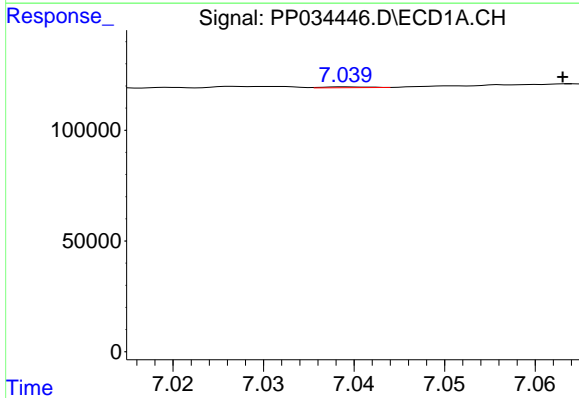


#25 AR-1248-5  
 R.T.: 7.133 min  
 Delta R.T.: 0.000 min  
 Response: 28802  
 Conc: 11.30 ng/ml

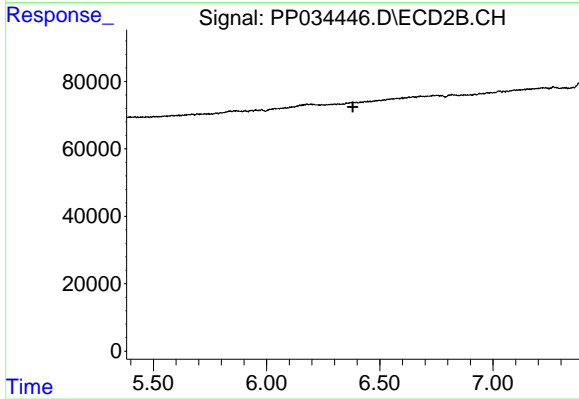
Instrument :  
 ECD\_P  
 ClientSampled :  
 HEXANE



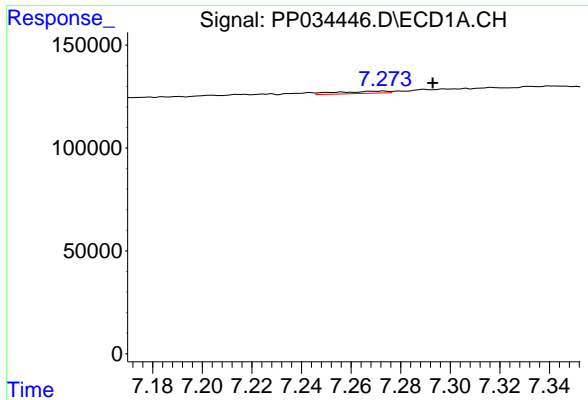
#25 AR-1248-5  
 R.T.: 0.000 min  
 Exp R.T. : 6.425 min  
 Response: 0  
 Conc: N.D.



#26 AR-1254-1  
 R.T.: 7.039 min  
 Delta R.T.: -0.024 min  
 Response: 1248  
 Conc: 0.45 ng/ml



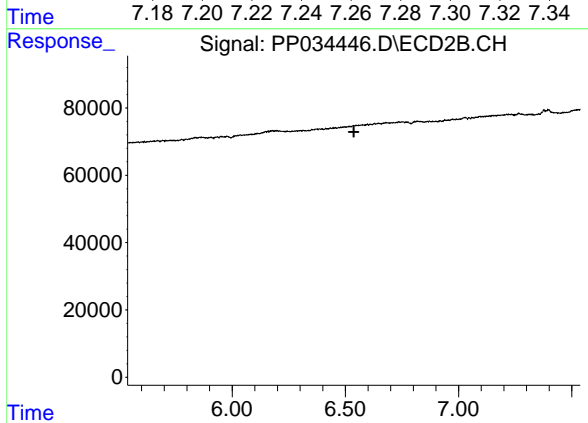
#26 AR-1254-1  
 R.T.: 0.000 min  
 Exp R.T. : 6.381 min  
 Response: 0  
 Conc: N.D.



#27 AR-1254-2

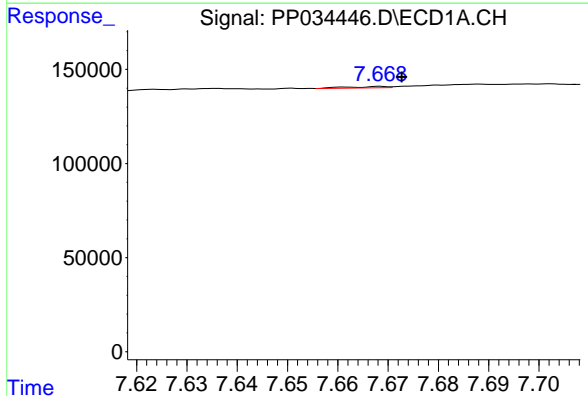
R.T.: 7.273 min  
 Delta R.T.: -0.020 min  
 Response: 15326  
 Conc: 3.60 ng/ml

Instrument :  
 ECD\_P  
 ClientSampled :  
 HEXANE



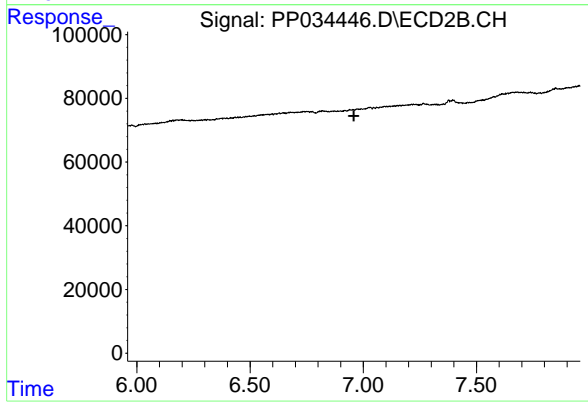
#27 AR-1254-2

R.T.: 0.000 min  
 Exp R.T. : 6.538 min  
 Response: 0  
 Conc: N.D.



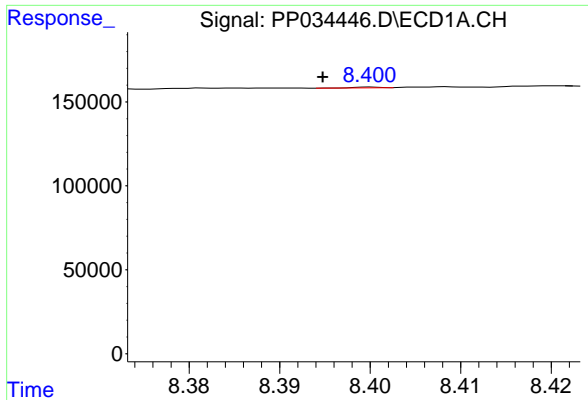
#28 AR-1254-3

R.T.: 7.668 min  
 Delta R.T.: -0.004 min  
 Response: 4399  
 Conc: 0.96 ng/ml



#28 AR-1254-3

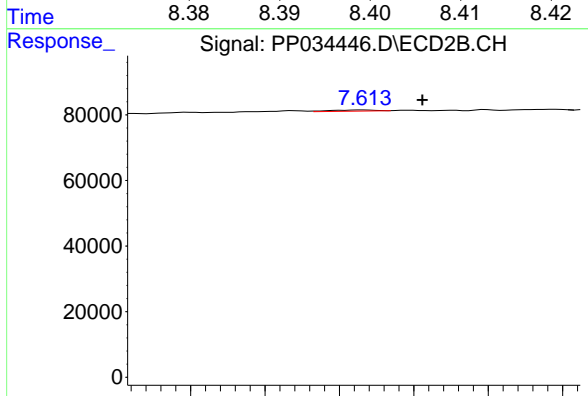
R.T.: 0.000 min  
 Exp R.T. : 6.958 min  
 Response: 0  
 Conc: N.D.



#30 AR-1254-5

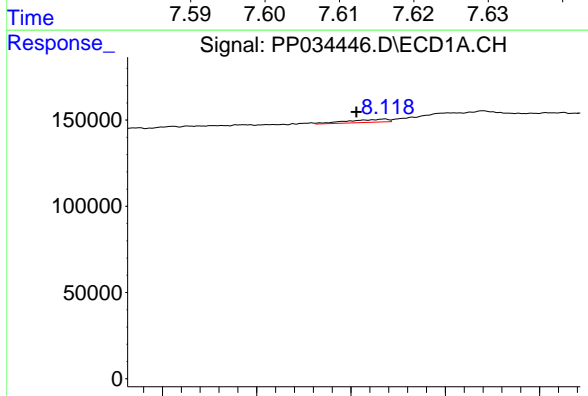
R.T.: 8.400 min  
 Delta R.T.: 0.005 min  
 Response: 995  
 Conc: 0.28 ng/ml

Instrument :  
 ECD\_P  
 ClientSampleId :  
 HEXANE



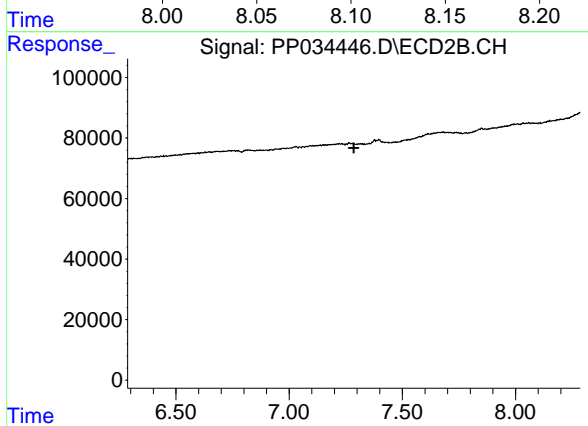
#30 AR-1254-5

R.T.: 7.613 min  
 Delta R.T.: -0.008 min  
 Response: 1483  
 Conc: 0.73 ng/ml



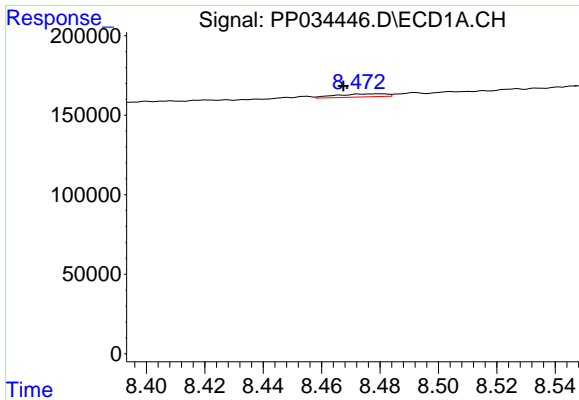
#32 AR-1260-2

R.T.: 8.118 min  
 Delta R.T.: 0.015 min  
 Response: 26100  
 Conc: 6.95 ng/ml



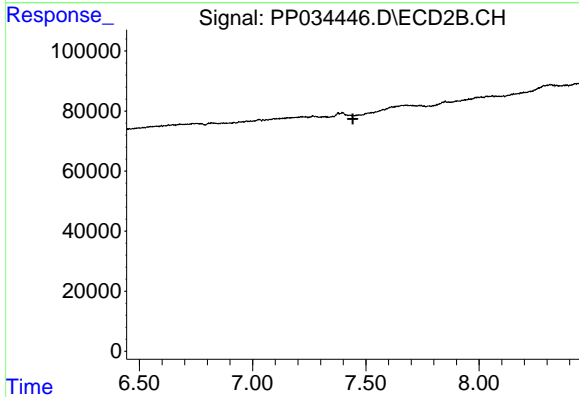
#32 AR-1260-2

R.T.: 0.000 min  
 Exp R.T.: 7.286 min  
 Response: 0  
 Conc: N.D.

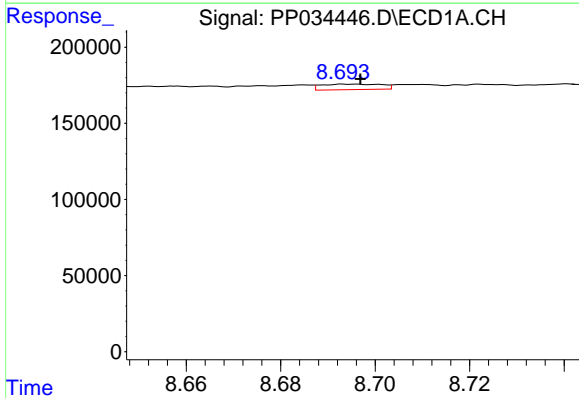


#33 AR-1260-3  
 R.T.: 8.480 min  
 Delta R.T.: 0.013 min  
 Response: 22758  
 Conc: 7.53 ng/ml

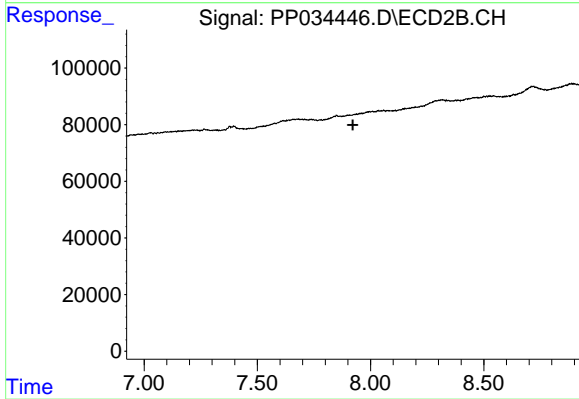
Instrument :  
 ECD\_P  
 ClientSampled :  
 HEXANE



#33 AR-1260-3  
 R.T.: 0.000 min  
 Exp R.T. : 7.443 min  
 Response: 0  
 Conc: N.D.

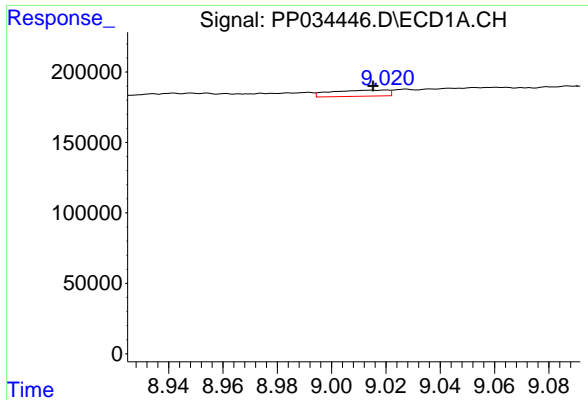


#34 AR-1260-4  
 R.T.: 8.693 min  
 Delta R.T.: -0.004 min  
 Response: 31850  
 Conc: 9.12 ng/ml



#34 AR-1260-4  
 R.T.: 0.000 min  
 Exp R.T. : 7.922 min  
 Response: 0  
 Conc: N.D.

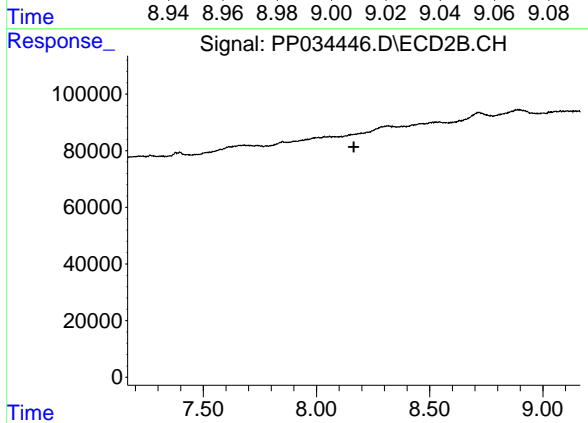




#35 AR-1260-5

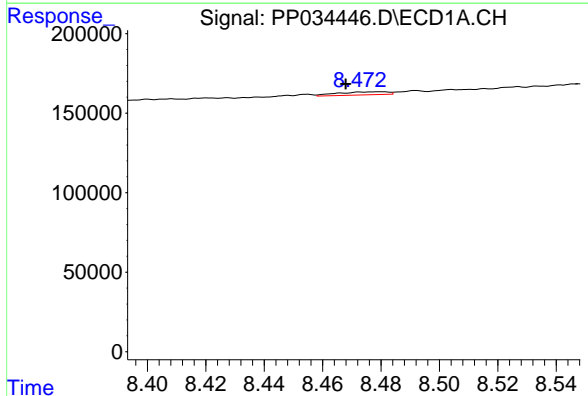
R.T.: 9.020 min  
 Delta R.T.: 0.005 min  
 Response: 63657  
 Conc: 8.89 ng/ml

Instrument :  
 ECD\_P  
 ClientSampleId :  
 HEXANE



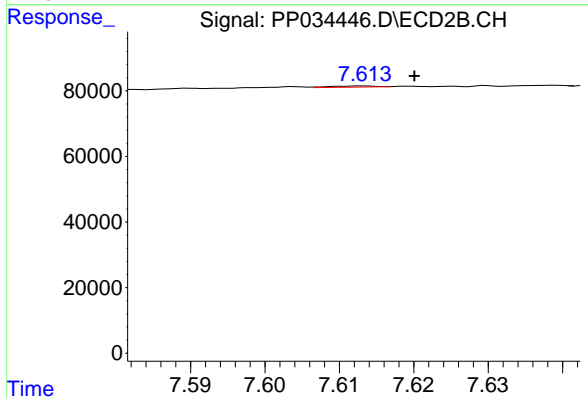
#35 AR-1260-5

R.T.: 0.000 min  
 Exp R.T. : 8.165 min  
 Response: 0  
 Conc: N.D.



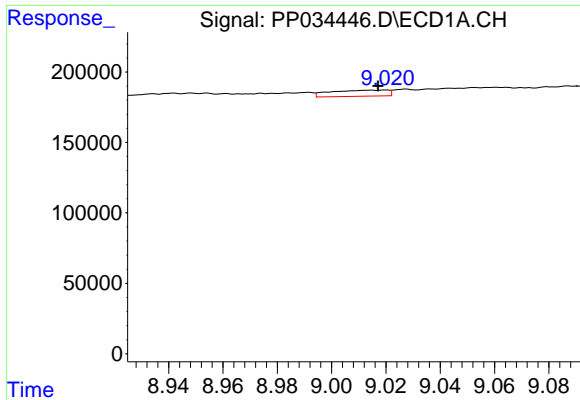
#36 AR-1262-1

R.T.: 8.480 min  
 Delta R.T.: 0.012 min  
 Response: 22758  
 Conc: 4.97 ng/ml



#36 AR-1262-1

R.T.: 7.613 min  
 Delta R.T.: -0.007 min  
 Response: 1483  
 Conc: 1.38 ng/ml

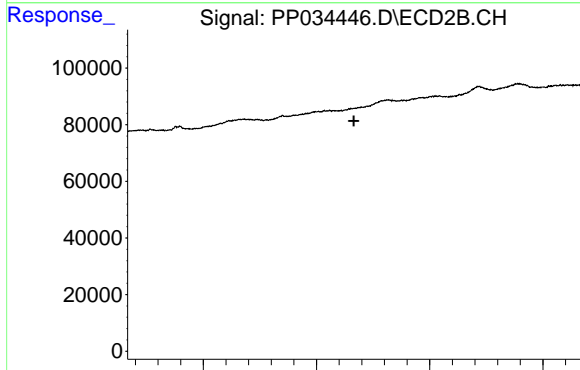


#37 AR-1262-2

R.T.: 9.020 min  
 Delta R.T.: 0.003 min  
 Response: 63657  
 Conc: 8.16 ng/ml

Instrument :  
 ECD\_P  
 ClientSampleId :  
 HEXANE

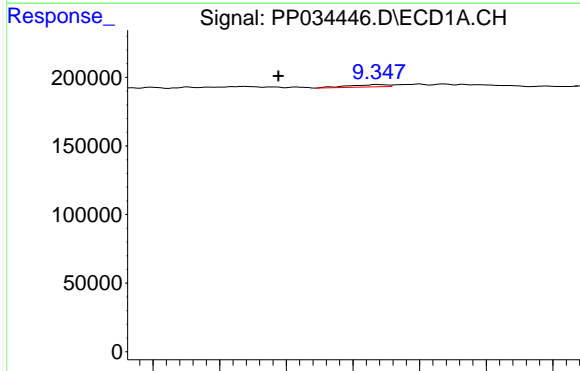
Time 8.94 8.96 8.98 9.00 9.02 9.04 9.06 9.08



#37 AR-1262-2

R.T.: 0.000 min  
 Exp R.T. : 8.165 min  
 Response: 0  
 Conc: N.D.

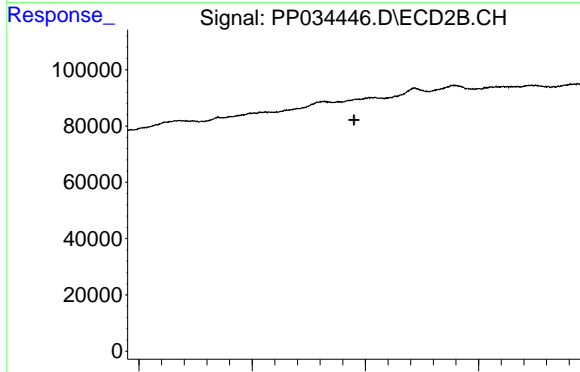
Time 7.50 8.00 8.50 9.00



#38 AR-1262-3

R.T.: 9.347 min  
 Delta R.T.: 0.030 min  
 Response: 13519  
 Conc: 2.51 ng/ml

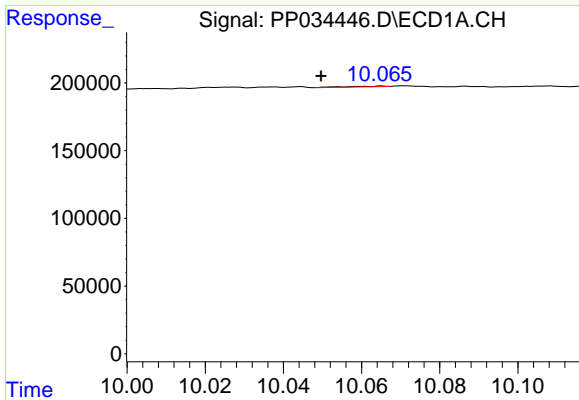
Time 9.28 9.30 9.32 9.34 9.36 9.38 9.40



#38 AR-1262-3

R.T.: 0.000 min  
 Exp R.T. : 8.450 min  
 Response: 0  
 Conc: N.D.

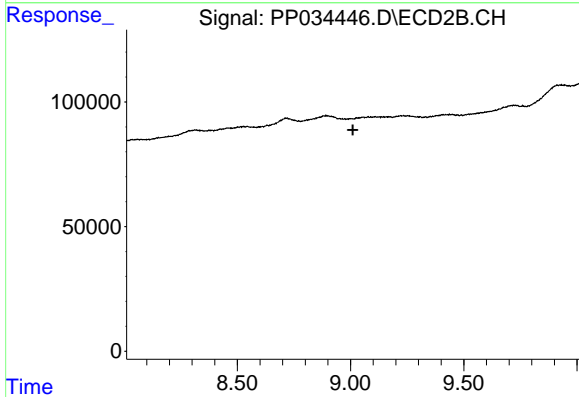
Time 7.50 8.00 8.50 9.00



#40 AR-1262-5

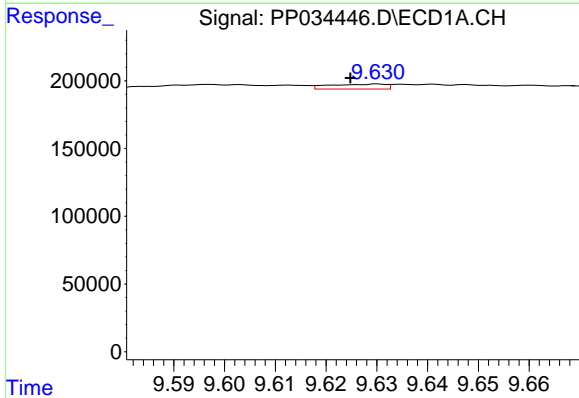
R.T.: 10.065 min  
 Delta R.T.: 0.016 min  
 Response: 3144  
 Conc: 1.09 ng/ml

Instrument :  
 ECD\_P  
 ClientSampled :  
 HEXANE



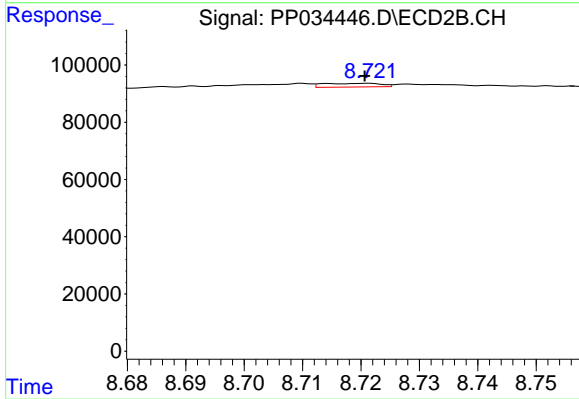
#40 AR-1262-5

R.T.: 0.000 min  
 Exp R.T. : 9.010 min  
 Response: 0  
 Conc: N.D.



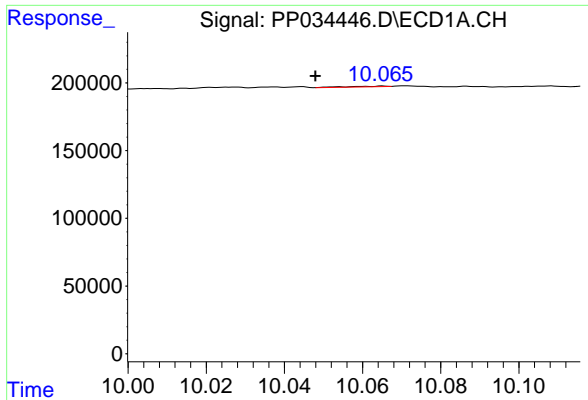
#43 AR-1268-3

R.T.: 9.630 min  
 Delta R.T.: 0.005 min  
 Response: 28249  
 Conc: 3.22 ng/ml



#43 AR-1268-3

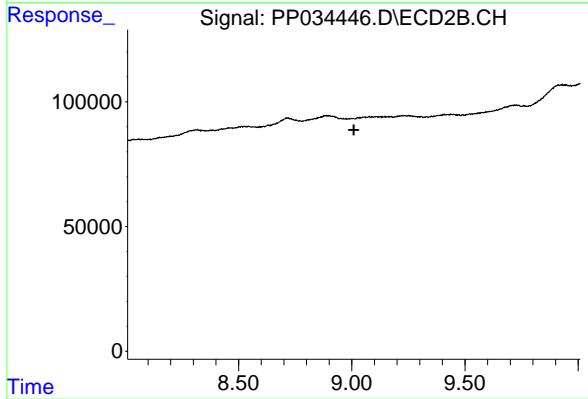
R.T.: 8.721 min  
 Delta R.T.: 0.000 min  
 Response: 8990  
 Conc: 2.47 ng/ml



#44 AR-1268-4

R.T.: 10.065 min  
Delta R.T.: 0.017 min  
Response: 3144  
Conc: 0.98 ng/ml

Instrument :  
ECD\_P  
ClientSampleId :  
HEXANE



#44 AR-1268-4

R.T.: 0.000 min  
Exp R.T. : 9.009 min  
Response: 0  
Conc: N.D.