

Data Path : Z:\pestpcbsrv\HPCHEM1\ECD_P\Data\PP033022\
 Data File : PP045344.D
 Signal(s) : Signal #1: ECD1A.ch Signal #2: ECD2B.ch
 Acq On : 30 Mar 2022 14:04
 Operator : YP\AJ
 Sample : AR1660ICC50
 Misc :
 ALS Vial : 7 Sample Multiplier: 1

Instrument :
 ECD_P
ClientSampleId :
 AR1660ICC050

Integration File signal 1: autoint1.e
 Integration File signal 2: autoint2.e
 Quant Time: Mar 30 14:19:52 2022
 Quant Method : Z:\pestpcbsrv\HPCHEM1\ECD_P\methods\PP033022.M
 Quant Title : GC EXTRACTABLES
 QLast Update : Wed Mar 30 14:04:10 2022
 Response via : Initial Calibration
 Integrator: ChemStation

Volume Inj. : 2 µl
 Signal #1 Phase : ZB-MR2 Signal #2 Phase: ZB-MR2
 Signal #1 Info : 30Mx0.32mmx 0.50µ Signal #2 Info : 30M x 0.32mm x 0.25µm

Compound	RT#1	RT#2	Resp#1	Resp#2	ng/ml	ng/ml

System Monitoring Compounds						
1) SA Tetrachlo...	3.887	3.146	12065793	8580514	5.001	5.540
2) SA Decachlor...	10.005	8.498	7739026	8699599	5.512	5.956
Target Compounds						
3) L1 AR-1016-1	5.138	4.288	3980757	3399482	56.906	59.236
4) L1 AR-1016-2	5.161	4.306	5898603	4656493	56.307	56.913
5) L1 AR-1016-3	5.227	4.491	3443296	2423280	52.955	54.385
6) L1 AR-1016-4	5.332	4.540	2979675	2044151	55.628	56.828
7) L1 AR-1016-5	5.653	4.764	2822376	2674607	55.720	57.538
31) L7 AR-1260-1	6.881	5.870	4422892	4829254	57.015	60.767
32) L7 AR-1260-2	7.164	6.077	5136317	5629000	59.069	60.113
33) L7 AR-1260-3	7.559	6.239	3844737	5434679	57.067	61.442
34) L7 AR-1260-4	7.807	6.750	4245744	4247035	56.456	56.979
35) L7 AR-1260-5	8.147	7.019	7546334	9764601	54.386	56.674

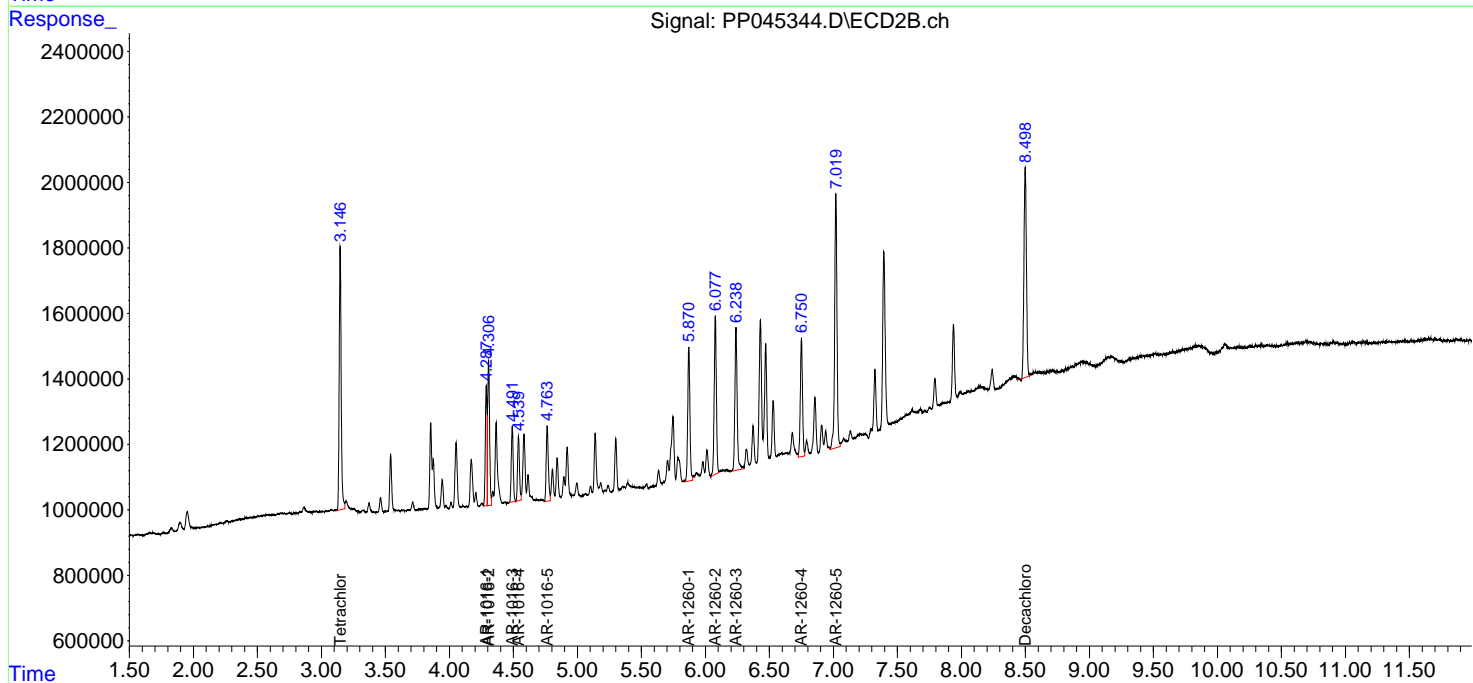
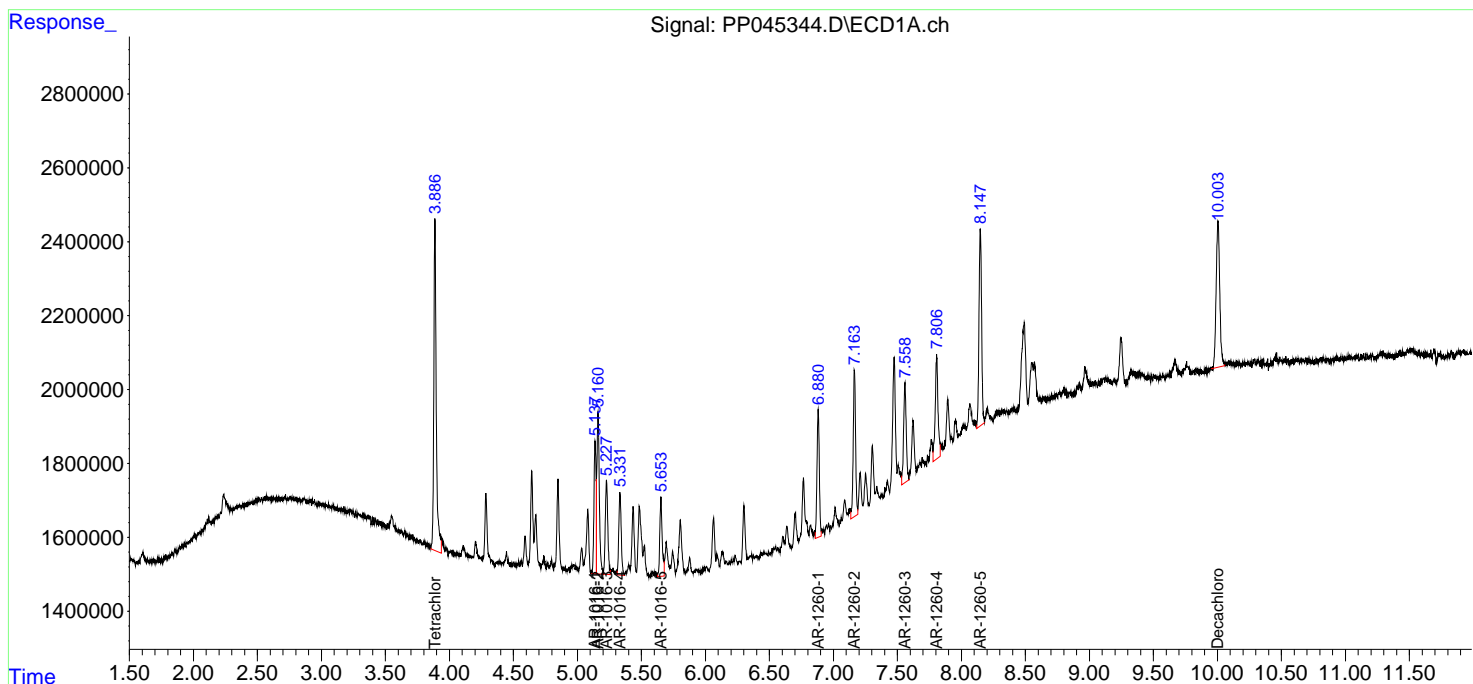
(f)=RT Delta > 1/2 Window (#)=Amounts differ by > 25% (m)=manual int.

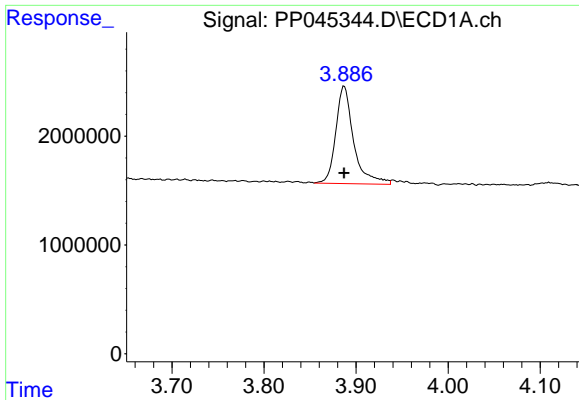
Data Path : Z:\pestpcbsrv\HPCHEM1\ECD_P\Data\PP033022\
 Data File : PP045344.D
 Signal(s) : Signal #1: ECD1A.ch Signal #2: ECD2B.ch
 Acq On : 30 Mar 2022 14:04
 Operator : YP\AJ
 Sample : AR1660ICC50
 Misc :
 ALS Vial : 7 Sample Multiplier: 1

Instrument :
 ECD_P
 ClientSampleId :
 AR1660ICC050

Integration File signal 1: autoint1.e
 Integration File signal 2: autoint2.e
 Quant Time: Mar 30 14:19:52 2022
 Quant Method : Z:\pestpcbsrv\HPCHEM1\ECD_P\methods\PP033022.M
 Quant Title : GC EXTRACTABLES
 QLast Update : Wed Mar 30 14:04:10 2022
 Response via : Initial Calibration
 Integrator: ChemStation

Volume Inj. : 2 µl
 Signal #1 Phase : ZB-MR1 Signal #2 Phase: ZB-MR2
 Signal #1 Info : 30Mx0.32mmx 0.50µ Signal #2 Info : 30M x 0.32mm x 0.25µm

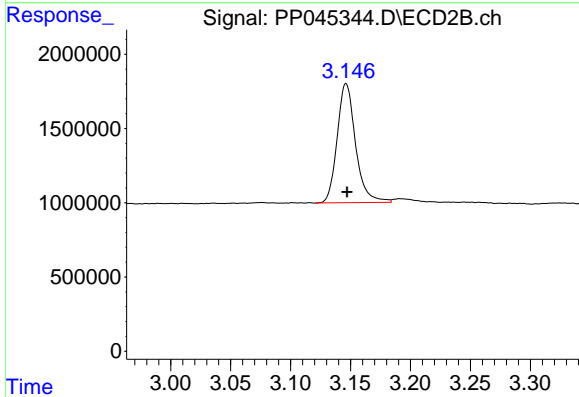




#1 Tetrachloro-m-xylene

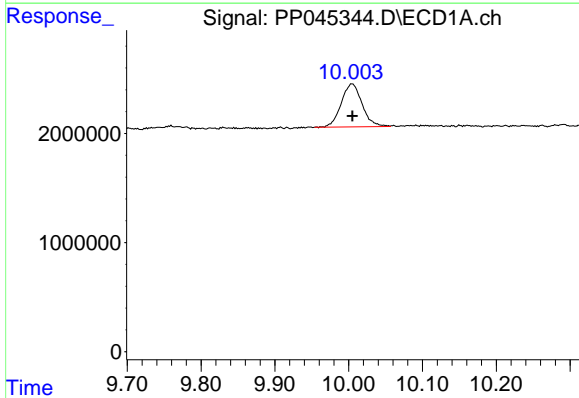
R.T.: 3.887 min
 Delta R.T.: 0.000 min
 Response: 12065793
 Conc: 5.00 ng/ml

Instrument :
 ECD_P
 ClientSampleId :
 AR1660ICC050



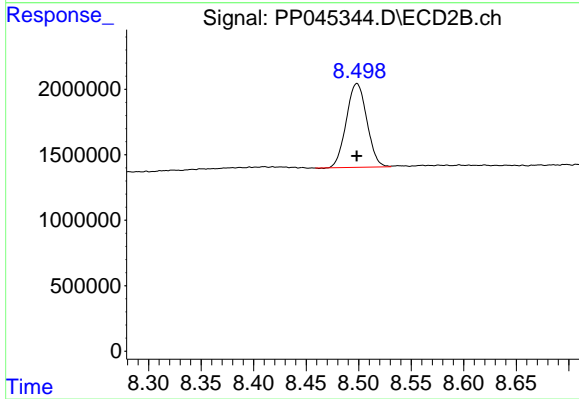
#1 Tetrachloro-m-xylene

R.T.: 3.146 min
 Delta R.T.: 0.000 min
 Response: 8580514
 Conc: 5.54 ng/ml



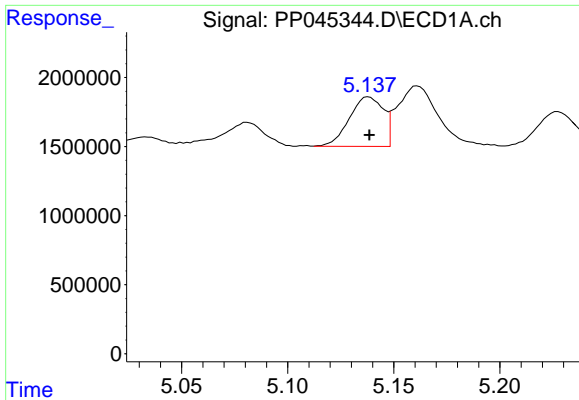
#2 Decachlorobiphenyl

R.T.: 10.005 min
 Delta R.T.: 0.000 min
 Response: 7739026
 Conc: 5.51 ng/ml



#2 Decachlorobiphenyl

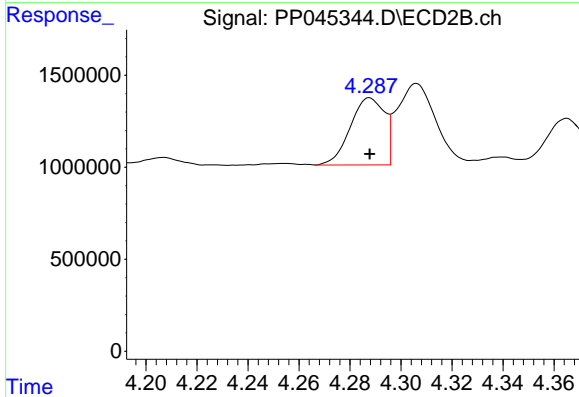
R.T.: 8.498 min
 Delta R.T.: 0.000 min
 Response: 8699599
 Conc: 5.96 ng/ml



#3 AR-1016-1

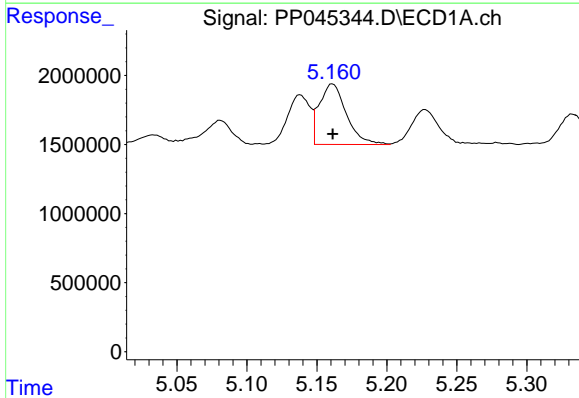
R.T.: 5.138 min
 Delta R.T.: 0.000 min
 Response: 3980757
 Conc: 56.91 ng/ml

Instrument :
 ECD_P
 ClientSampleId :
 AR1660ICC050



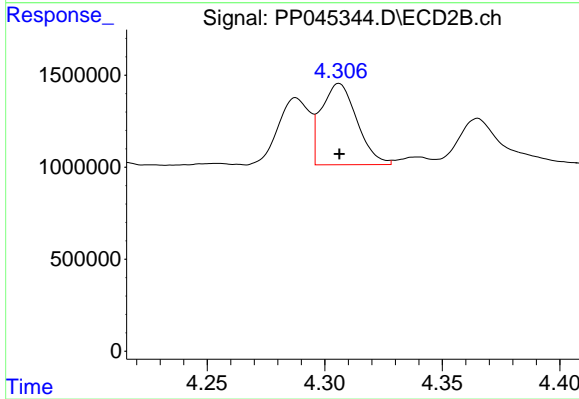
#3 AR-1016-1

R.T.: 4.288 min
 Delta R.T.: 0.000 min
 Response: 3399482
 Conc: 59.24 ng/ml



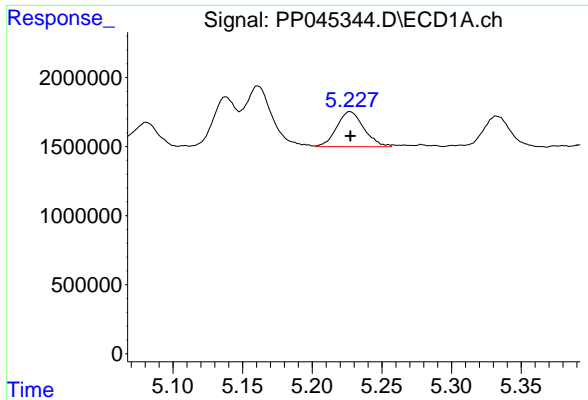
#4 AR-1016-2

R.T.: 5.161 min
 Delta R.T.: 0.000 min
 Response: 5898603
 Conc: 56.31 ng/ml



#4 AR-1016-2

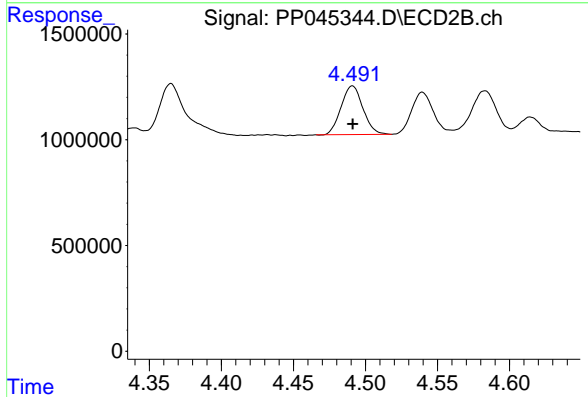
R.T.: 4.306 min
 Delta R.T.: 0.000 min
 Response: 4656493
 Conc: 56.91 ng/ml



#5 AR-1016-3

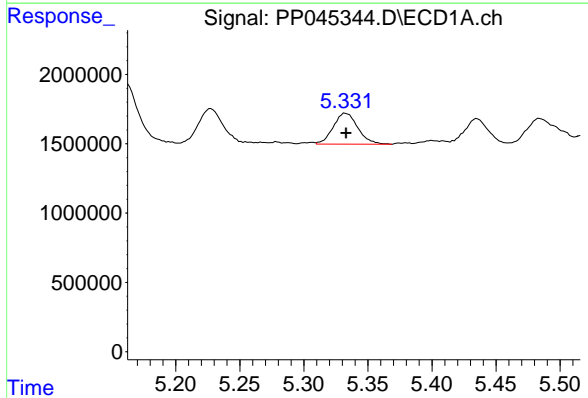
R.T.: 5.227 min
 Delta R.T.: 0.000 min
 Response: 3443296
 Conc: 52.96 ng/ml

Instrument :
 ECD_P
 ClientSampleId :
 AR1660ICC050



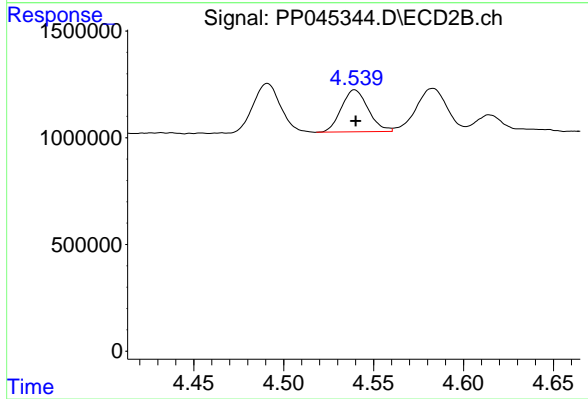
#5 AR-1016-3

R.T.: 4.491 min
 Delta R.T.: 0.000 min
 Response: 2423280
 Conc: 54.39 ng/ml



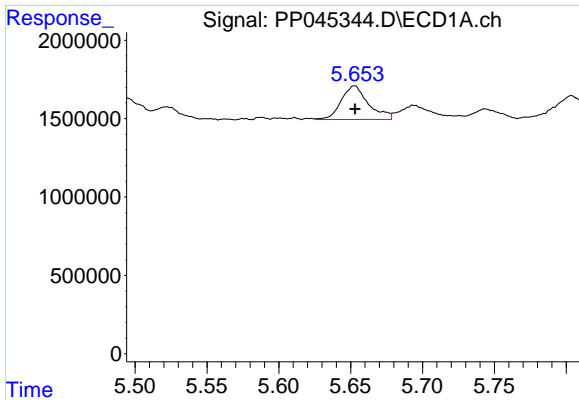
#6 AR-1016-4

R.T.: 5.332 min
 Delta R.T.: 0.000 min
 Response: 2979675
 Conc: 55.63 ng/ml



#6 AR-1016-4

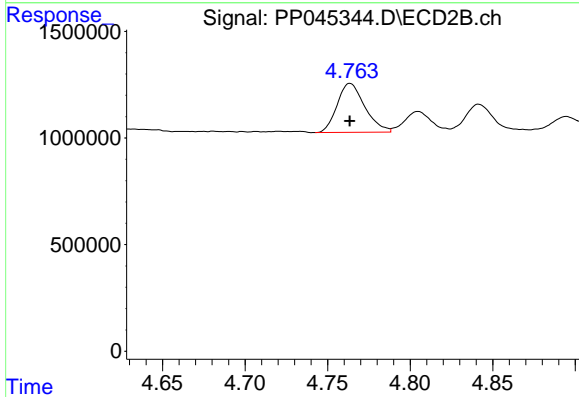
R.T.: 4.540 min
 Delta R.T.: 0.000 min
 Response: 2044151
 Conc: 56.83 ng/ml



#7 AR-1016-5

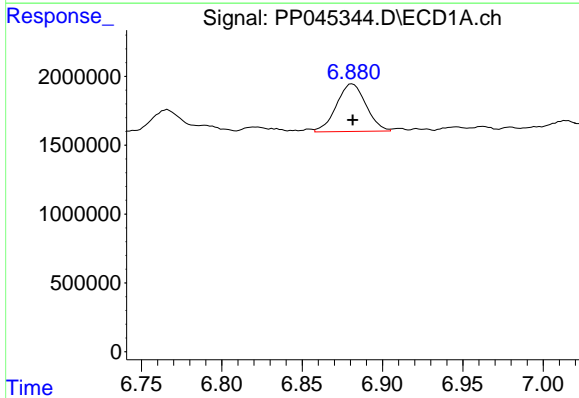
R.T.: 5.653 min
 Delta R.T.: 0.000 min
 Response: 2822376
 Conc: 55.72 ng/ml

Instrument :
 ECD_P
 ClientSampleId :
 AR1660ICC050



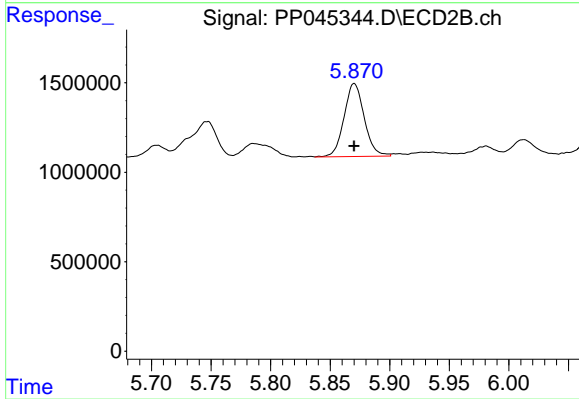
#7 AR-1016-5

R.T.: 4.764 min
 Delta R.T.: 0.000 min
 Response: 2674607
 Conc: 57.54 ng/ml



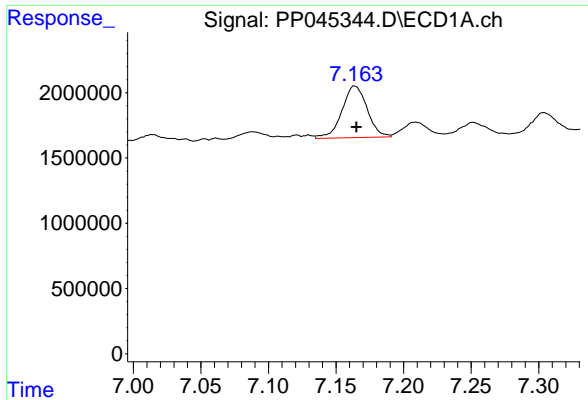
#31 AR-1260-1

R.T.: 6.881 min
 Delta R.T.: 0.000 min
 Response: 4422892
 Conc: 57.02 ng/ml



#31 AR-1260-1

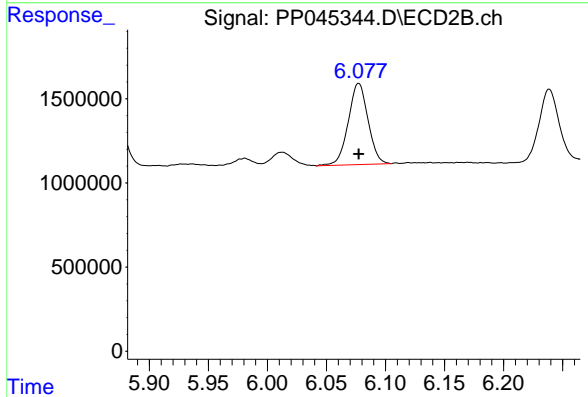
R.T.: 5.870 min
 Delta R.T.: 0.000 min
 Response: 4829254
 Conc: 60.77 ng/ml



#32 AR-1260-2

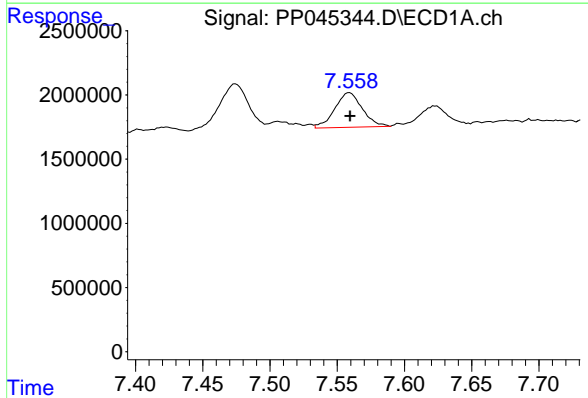
R.T.: 7.164 min
 Delta R.T.: -0.001 min
 Response: 5136317
 Conc: 59.07 ng/ml

Instrument :
 ECD_P
 ClientSampleId :
 AR1660ICC050



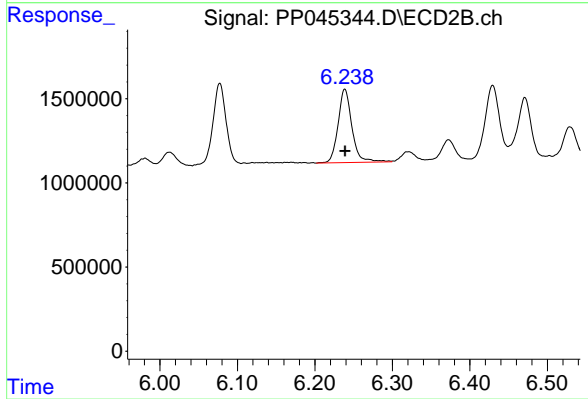
#32 AR-1260-2

R.T.: 6.077 min
 Delta R.T.: 0.000 min
 Response: 5629000
 Conc: 60.11 ng/ml



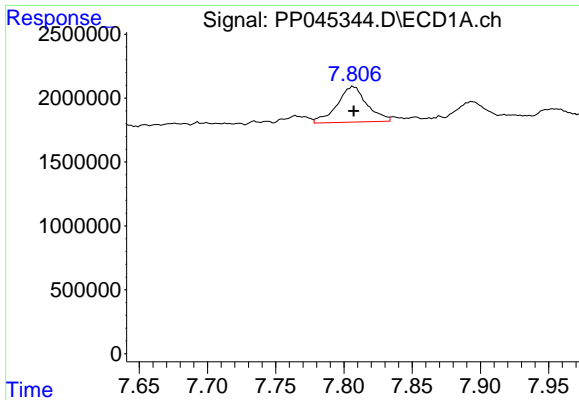
#33 AR-1260-3

R.T.: 7.559 min
 Delta R.T.: 0.000 min
 Response: 3844737
 Conc: 57.07 ng/ml



#33 AR-1260-3

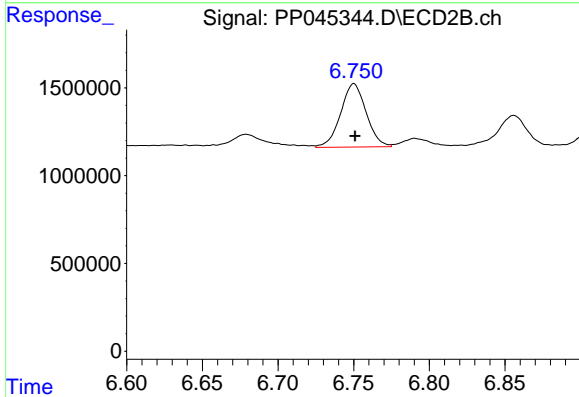
R.T.: 6.239 min
 Delta R.T.: 0.000 min
 Response: 5434679
 Conc: 61.44 ng/ml



#34 AR-1260-4

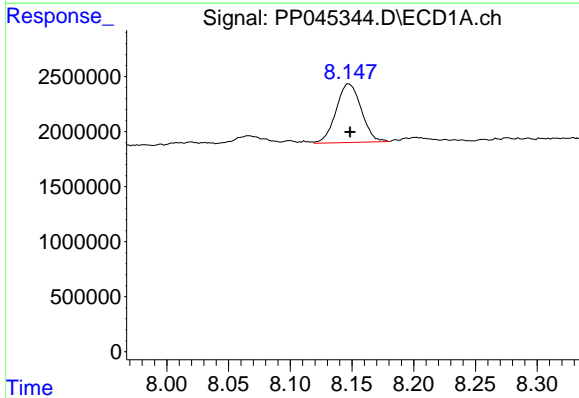
R.T.: 7.807 min
 Delta R.T.: 0.000 min
 Response: 4245744
 Conc: 56.46 ng/ml

Instrument :
 ECD_P
 ClientSampleId :
 AR1660ICC050



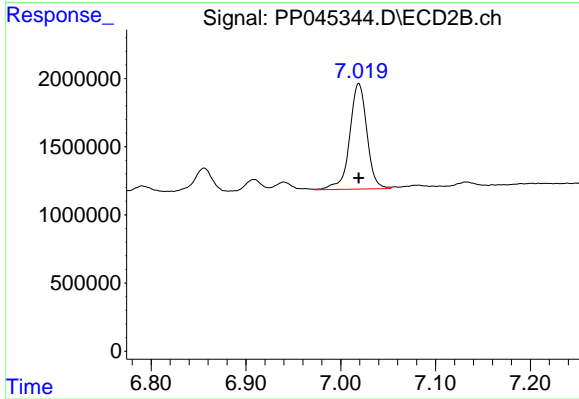
#34 AR-1260-4

R.T.: 6.750 min
 Delta R.T.: 0.000 min
 Response: 4247035
 Conc: 56.98 ng/ml



#35 AR-1260-5

R.T.: 8.147 min
 Delta R.T.: 0.000 min
 Response: 7546334
 Conc: 54.39 ng/ml



#35 AR-1260-5

R.T.: 7.019 min
 Delta R.T.: 0.000 min
 Response: 9764601
 Conc: 56.67 ng/ml