

Data Path : Z:\pestpcbsrv\HPCHEM1\ECD\_P\Data\PP033022\  
 Data File : PP045346.D  
 Signal(s) : Signal #1: ECD1A.ch Signal #2: ECD2B.ch  
 Acq On : 30 Mar 2022 14:34  
 Operator : YP\AJ  
 Sample : AR1232ICC500  
 Misc :  
 ALS Vial : 9 Sample Multiplier: 1

**Instrument :**  
 ECD\_P  
**ClientSampleId :**  
 AR1232ICC500

Integration File signal 1: autoint1.e  
 Integration File signal 2: autoint2.e  
 Quant Time: Mar 30 15:37:58 2022  
 Quant Method : Z:\pestpcbsrv\HPCHEM1\ECD\_P\methods\PP033022.M  
 Quant Title : GC EXTRACTABLES  
 QLast Update : Wed Mar 30 15:37:35 2022  
 Response via : Initial Calibration  
 Integrator: ChemStation

Volume Inj. : 2 µl  
 Signal #1 Phase : ZB-MR1 Signal #2 Phase: ZB-MR2  
 Signal #1 Info : 30Mx0.32mmx 0.50µ Signal #2 Info : 30M x 0.32mm x 0.25µm

| Compound                    | RT#1   | RT#2  | Resp#1   | Resp#2   | ng/ml   | ng/ml   |
|-----------------------------|--------|-------|----------|----------|---------|---------|
| -----                       |        |       |          |          |         |         |
| System Monitoring Compounds |        |       |          |          |         |         |
| 1) SA Tetrachlo...          | 3.888  | 3.147 | 125.8E6  | 80183276 | 50.000  | 50.000  |
| 2) SA Decachlor...          | 10.004 | 8.498 | 73068721 | 76047766 | 50.000  | 50.000  |
| Target Compounds            |        |       |          |          |         |         |
| 11) L3 AR-1232-1            | 4.286  | 3.541 | 24654390 | 18349020 | 500.000 | 500.000 |
| 12) L3 AR-1232-2            | 4.849  | 4.306 | 11016293 | 17064412 | 500.000 | 500.000 |
| 13) L3 AR-1232-3            | 5.162  | 4.491 | 21525288 | 9145592  | 500.000 | 500.000 |
| 14) L3 AR-1232-4            | 5.334  | 4.583 | 10927925 | 8189933  | 500.000 | 500.000 |
| 15) L3 AR-1232-5            | 5.435  | 4.764 | 7963520  | 9343347  | 500.000 | 500.000 |
| -----                       |        |       |          |          |         |         |

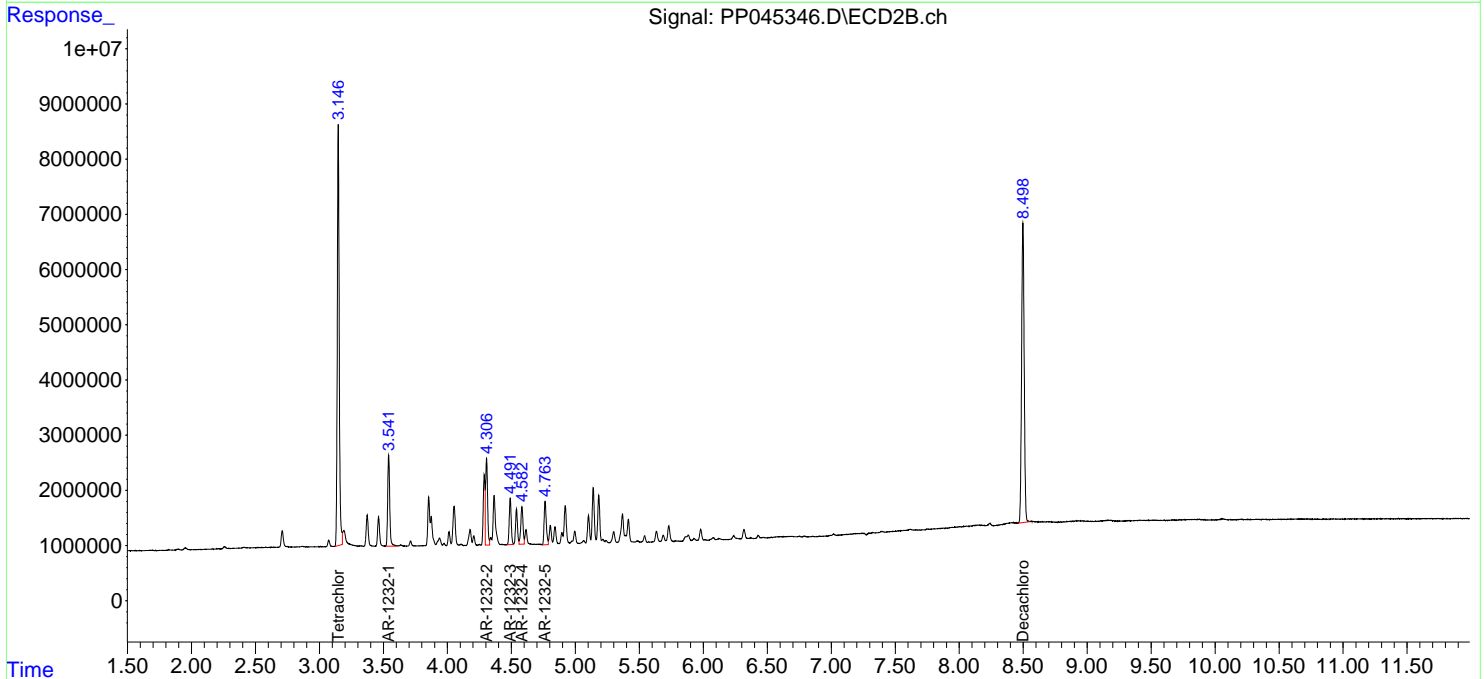
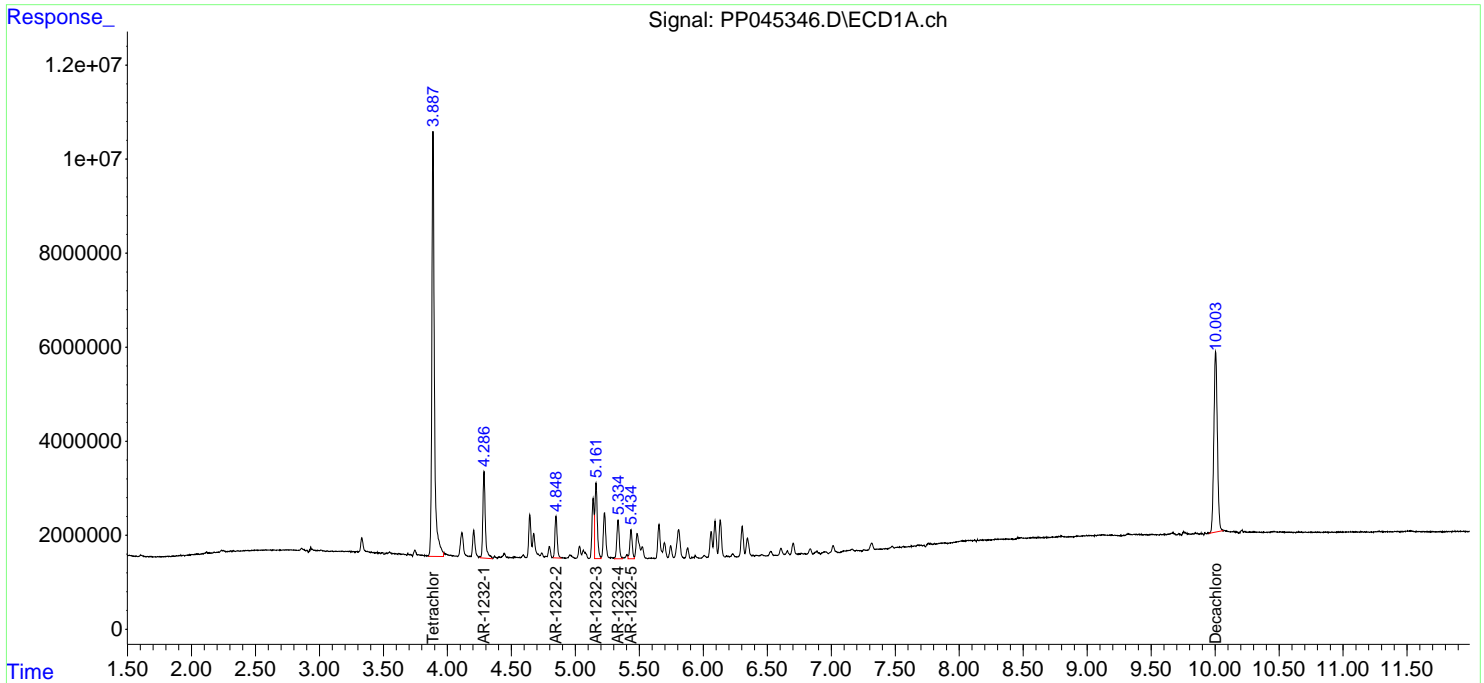
(f)=RT Delta > 1/2 Window (#)=Amounts differ by > 25% (m)=manual int.

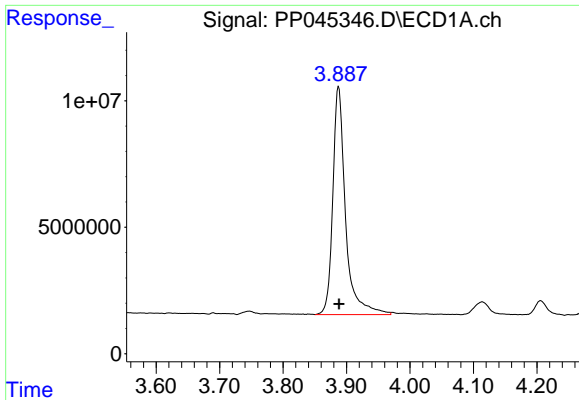
Data Path : Z:\pestpcbsrv\HPCHEM1\ECD\_P\Data\PP033022\  
 Data File : PP045346.D  
 Signal(s) : Signal #1: ECD1A.ch Signal #2: ECD2B.ch  
 Acq On : 30 Mar 2022 14:34  
 Operator : YP\AJ  
 Sample : AR1232ICC500  
 Misc :  
 ALS Vial : 9 Sample Multiplier: 1

Instrument :  
 ECD\_P  
 ClientSampleId :  
 AR1232ICC500

Integration File signal 1: autoint1.e  
 Integration File signal 2: autoint2.e  
 Quant Time: Mar 30 15:37:58 2022  
 Quant Method : Z:\pestpcbsrv\HPCHEM1\ECD\_P\methods\PP033022.M  
 Quant Title : GC EXTRACTABLES  
 QLast Update : Wed Mar 30 15:37:35 2022  
 Response via : Initial Calibration  
 Integrator: ChemStation

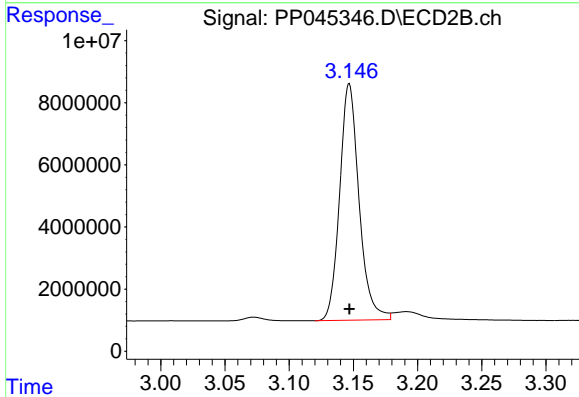
Volume Inj. : 2 µl  
 Signal #1 Phase : ZB-MR1 Signal #2 Phase: ZB-MR2  
 Signal #1 Info : 30Mx0.32mmx 0.50µ Signal #2 Info : 30M x 0.32mm x 0.25µm



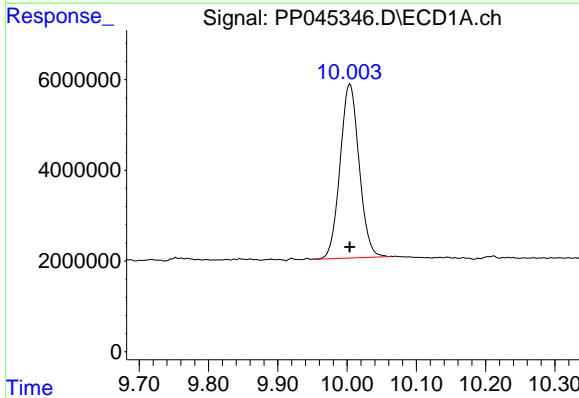


#1 Tetrachloro-m-xylene  
 R.T.: 3.888 min  
 Delta R.T.: 0.000 min  
 Response: 125823125  
 Conc: 50.00 ng/ml

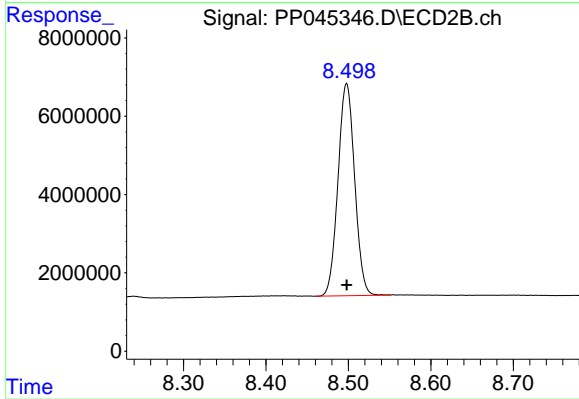
Instrument :  
 ECD\_P  
 ClientSampleId :  
 AR1232ICC500



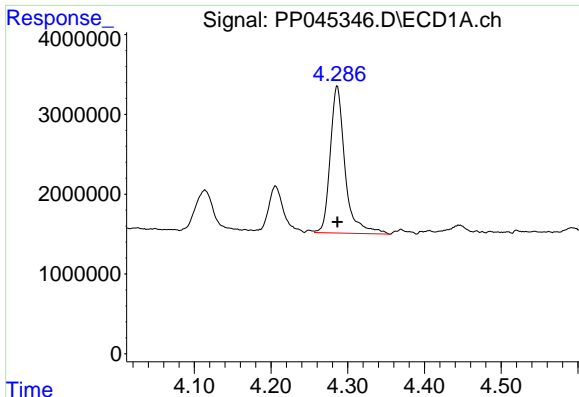
#1 Tetrachloro-m-xylene  
 R.T.: 3.147 min  
 Delta R.T.: 0.000 min  
 Response: 80183276  
 Conc: 50.00 ng/ml



#2 Decachlorobiphenyl  
 R.T.: 10.004 min  
 Delta R.T.: 0.000 min  
 Response: 73068721  
 Conc: 50.00 ng/ml



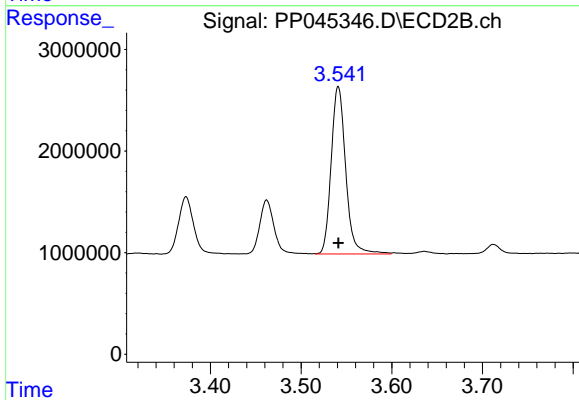
#2 Decachlorobiphenyl  
 R.T.: 8.498 min  
 Delta R.T.: 0.000 min  
 Response: 76047766  
 Conc: 50.00 ng/ml



#11 AR-1232-1

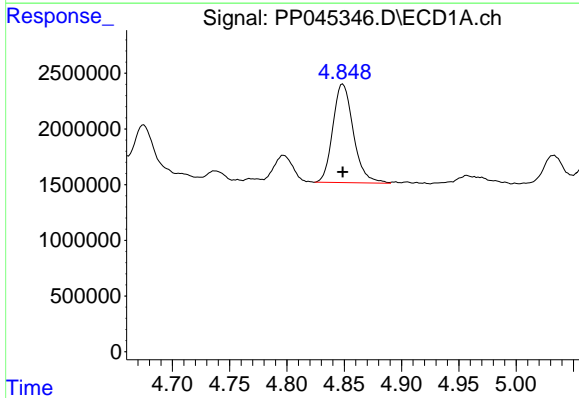
R.T.: 4.286 min  
 Delta R.T.: 0.000 min  
 Response: 24654390  
 Conc: 500.00 ng/ml

Instrument :  
 ECD\_P  
 ClientSampleId :  
 AR1232ICC500



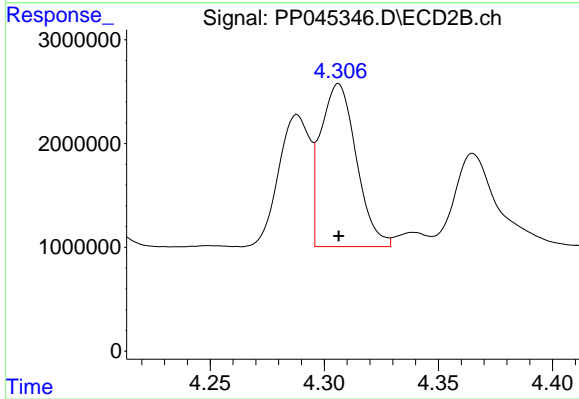
#11 AR-1232-1

R.T.: 3.541 min  
 Delta R.T.: 0.000 min  
 Response: 18349020  
 Conc: 500.00 ng/ml



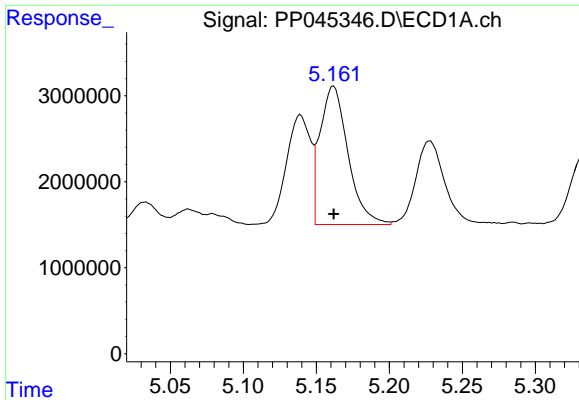
#12 AR-1232-2

R.T.: 4.849 min  
 Delta R.T.: 0.000 min  
 Response: 11016293  
 Conc: 500.00 ng/ml



#12 AR-1232-2

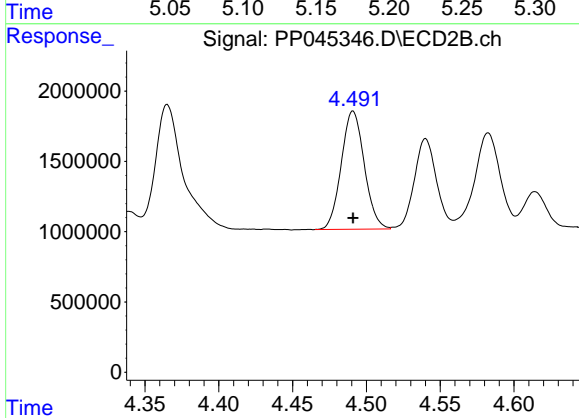
R.T.: 4.306 min  
 Delta R.T.: 0.000 min  
 Response: 17064412  
 Conc: 500.00 ng/ml



#13 AR-1232-3

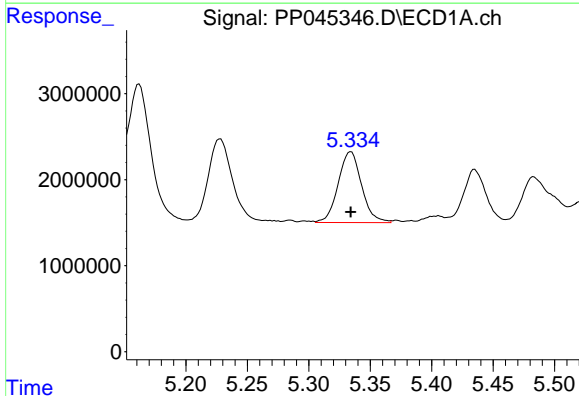
R.T.: 5.162 min  
 Delta R.T.: 0.000 min  
 Response: 21525288  
 Conc: 500.00 ng/ml

Instrument :  
 ECD\_P  
 ClientSampleId :  
 AR1232ICC500



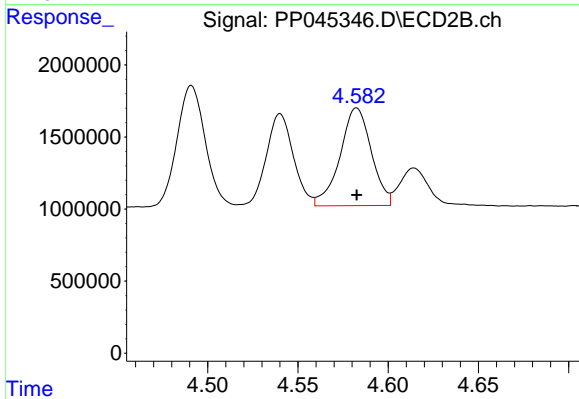
#13 AR-1232-3

R.T.: 4.491 min  
 Delta R.T.: 0.000 min  
 Response: 9145592  
 Conc: 500.00 ng/ml



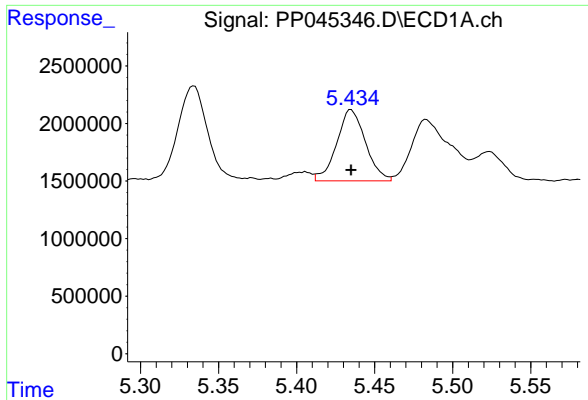
#14 AR-1232-4

R.T.: 5.334 min  
 Delta R.T.: 0.000 min  
 Response: 10927925  
 Conc: 500.00 ng/ml



#14 AR-1232-4

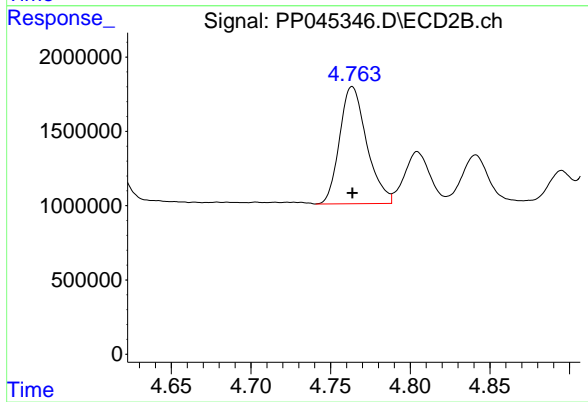
R.T.: 4.583 min  
 Delta R.T.: 0.000 min  
 Response: 8189933  
 Conc: 500.00 ng/ml



#15 AR-1232-5

R.T.: 5.435 min  
Delta R.T.: 0.000 min  
Response: 7963520  
Conc: 500.00 ng/ml

Instrument :  
ECD\_P  
ClientSampleId :  
AR1232ICC500



#15 AR-1232-5

R.T.: 4.764 min  
Delta R.T.: 0.000 min  
Response: 9343347  
Conc: 500.00 ng/ml