

Data Path : Z:\pestpcbsrv\HPCHEM1\ECD_P\Data\PP033022\
 Data File : PP045351.D
 Signal(s) : Signal #1: ECD1A.ch Signal #2: ECD2B.ch
 Acq On : 30 Mar 2022 15:51
 Operator : YP\AJ
 Sample : AR1242ICC50
 Misc :
 ALS Vial : 14 Sample Multiplier: 1

Instrument :
 ECD_P
 ClientSampleId :
 AR1242ICC050

Integration File signal 1: autoint1.e
 Integration File signal 2: autoint2.e
 Quant Time: Mar 30 16:04:27 2022
 Quant Method : Z:\pestpcbsrv\HPCHEM1\ECD_P\methods\PP033022.M
 Quant Title : GC EXTRACTABLES
 QLast Update : Wed Mar 30 15:41:24 2022
 Response via : Initial Calibration
 Integrator: ChemStation

Volume Inj. : 2 µl
 Signal #1 Phase : ZB-MR2 Signal #2 Phase: ZB-MR2
 Signal #1 Info : 30Mx0.32mmx 0.50µ Signal #2 Info : 30M x 0.32mm x 0.25µm

Compound	RT#1	RT#2	Resp#1	Resp#2	ng/ml	ng/ml

System Monitoring Compounds						
1) SA Tetrachlo...	3.887	3.146	12196211	8431967	4.854	5.141
2) SA Decachlor...	10.004	8.497	7534162	8478224	4.870	5.518
Target Compounds						
16) L4 AR-1242-1	5.138	4.288	3149101	2684341	55.247	56.617
17) L4 AR-1242-2	5.161	4.306	4682595	3548675	55.051	53.756
18) L4 AR-1242-3	5.227	4.490	2907825	1909360	54.769	52.317
19) L4 AR-1242-4	5.334	4.583	2504579	1910509	57.111	53.699
20) L4 AR-1242-5	6.135	5.140	2837124	2746203	64.818	60.094

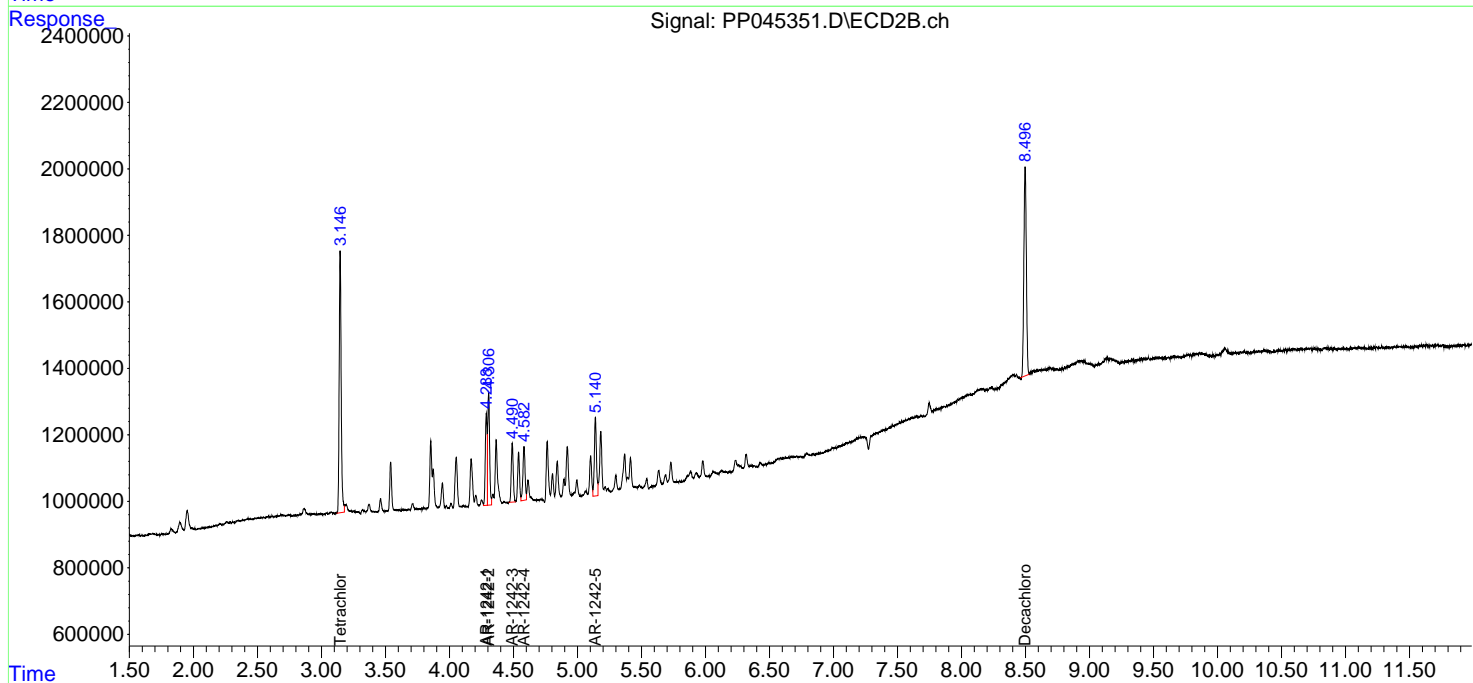
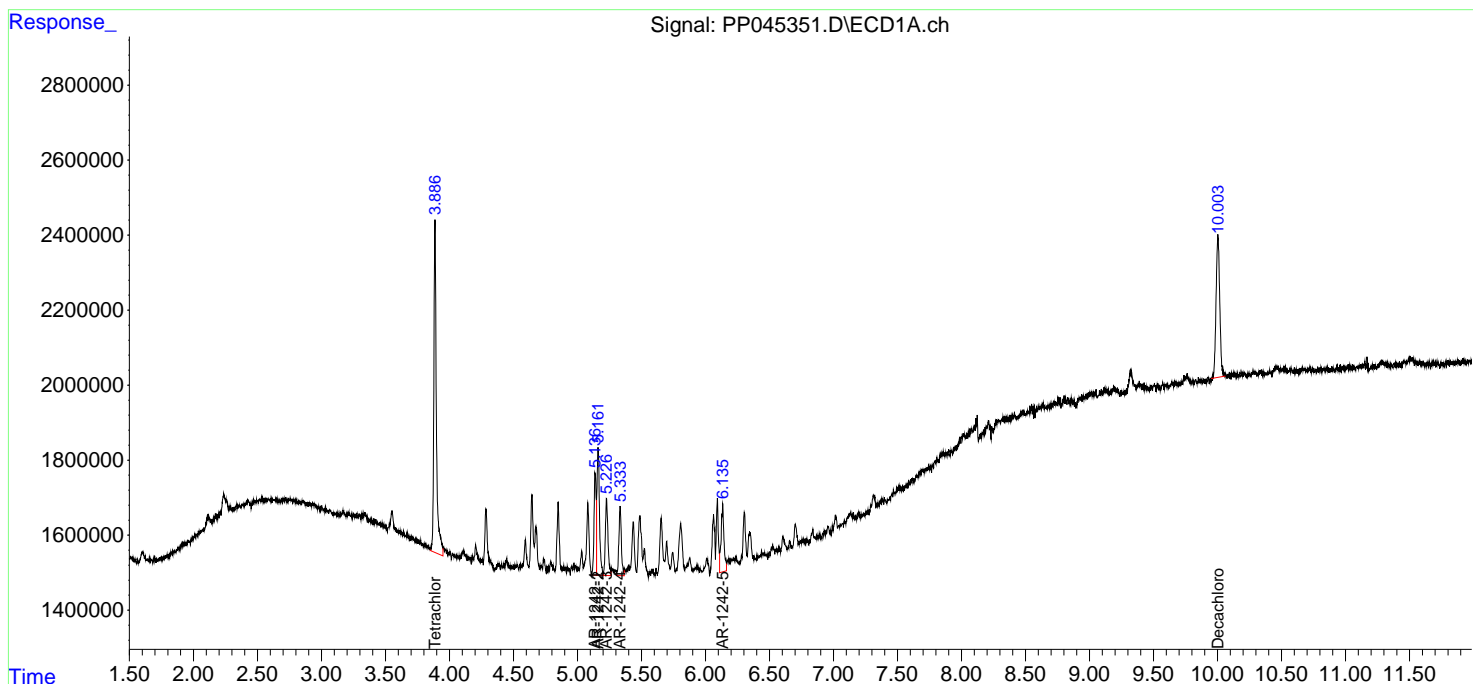
(f)=RT Delta > 1/2 Window (#)=Amounts differ by > 25% (m)=manual int.

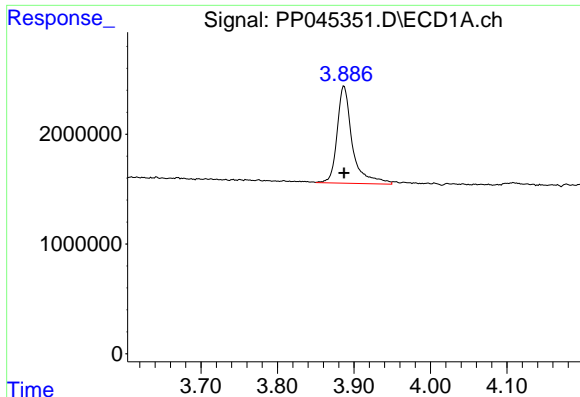
Data Path : Z:\pestpcbsrv\HPCHEM1\ECD_P\Data\PP033022\
 Data File : PP045351.D
 Signal(s) : Signal #1: ECD1A.ch Signal #2: ECD2B.ch
 Acq On : 30 Mar 2022 15:51
 Operator : YP\AJ
 Sample : AR1242ICC50
 Misc :
 ALS Vial : 14 Sample Multiplier: 1

Instrument :
 ECD_P
 ClientSampleId :
 AR1242ICC050

Integration File signal 1: autoint1.e
 Integration File signal 2: autoint2.e
 Quant Time: Mar 30 16:04:27 2022
 Quant Method : Z:\pestpcbsrv\HPCHEM1\ECD_P\methods\PP033022.M
 Quant Title : GC EXTRACTABLES
 QLast Update : Wed Mar 30 15:41:24 2022
 Response via : Initial Calibration
 Integrator: ChemStation

Volume Inj. : 2 µl
 Signal #1 Phase : ZB-MR1 Signal #2 Phase: ZB-MR2
 Signal #1 Info : 30Mx0.32mmx 0.50µ Signal #2 Info : 30M x 0.32mm x 0.25µm

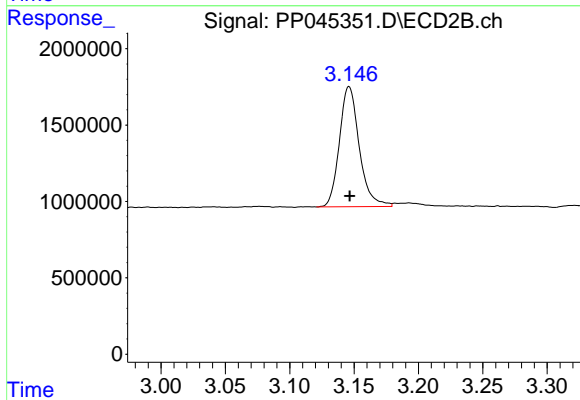




#1 Tetrachloro-m-xylene

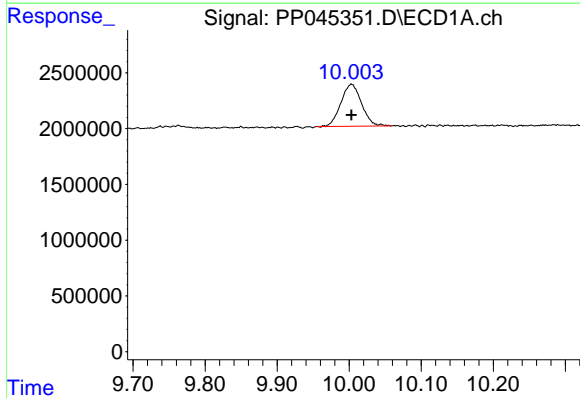
R.T.: 3.887 min
 Delta R.T.: 0.000 min
 Response: 12196211
 Conc: 4.85 ng/ml

Instrument :
 ECD_P
 ClientSampleId :
 AR1242IC050



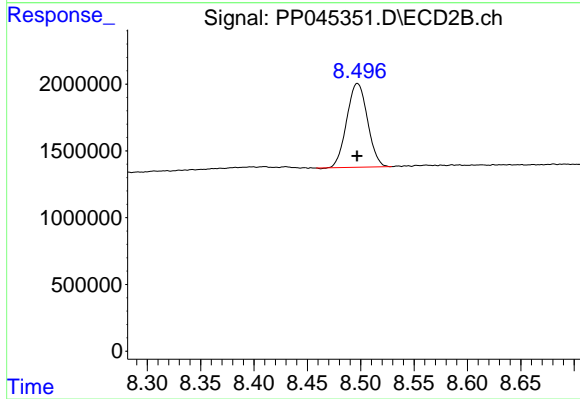
#1 Tetrachloro-m-xylene

R.T.: 3.146 min
 Delta R.T.: 0.000 min
 Response: 8431967
 Conc: 5.14 ng/ml



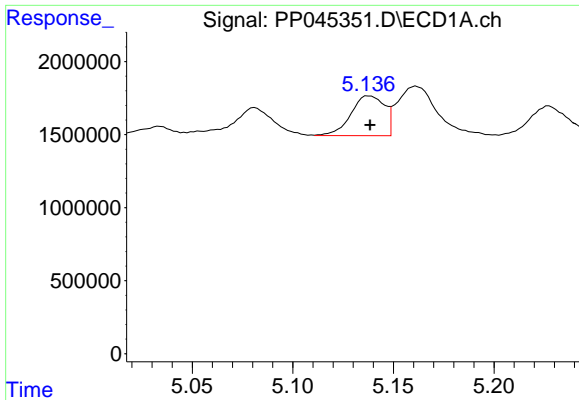
#2 Decachlorobiphenyl

R.T.: 10.004 min
 Delta R.T.: 0.000 min
 Response: 7534162
 Conc: 4.87 ng/ml



#2 Decachlorobiphenyl

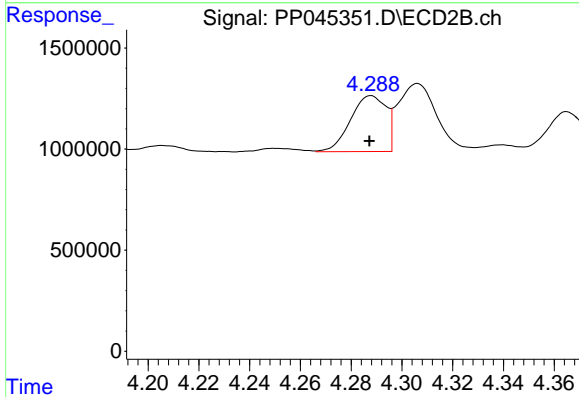
R.T.: 8.497 min
 Delta R.T.: 0.000 min
 Response: 8478224
 Conc: 5.52 ng/ml



#16 AR-1242-1

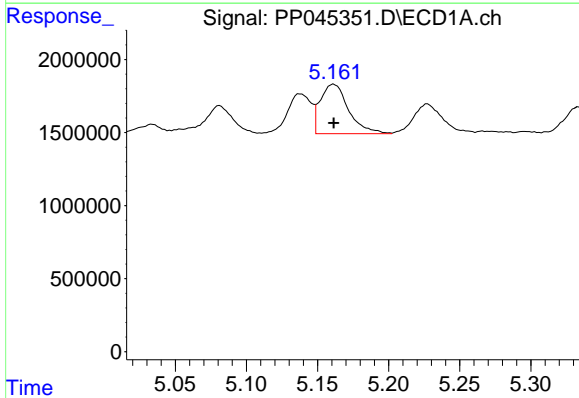
R.T.: 5.138 min
 Delta R.T.: 0.000 min
 Response: 3149101
 Conc: 55.25 ng/ml

Instrument :
 ECD_P
 ClientSampleId :
 AR1242ICC050



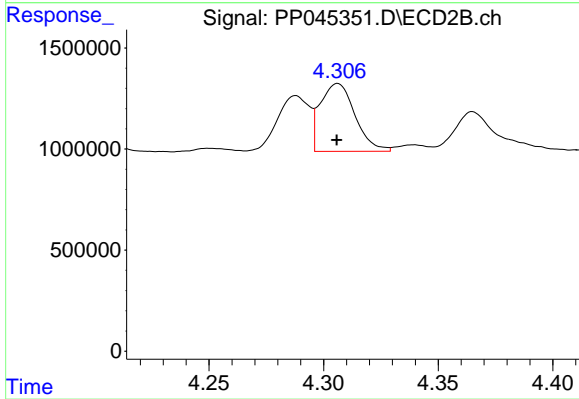
#16 AR-1242-1

R.T.: 4.288 min
 Delta R.T.: 0.000 min
 Response: 2684341
 Conc: 56.62 ng/ml



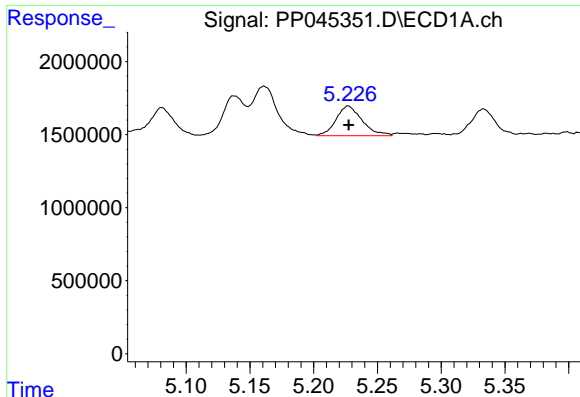
#17 AR-1242-2

R.T.: 5.161 min
 Delta R.T.: 0.000 min
 Response: 4682595
 Conc: 55.05 ng/ml



#17 AR-1242-2

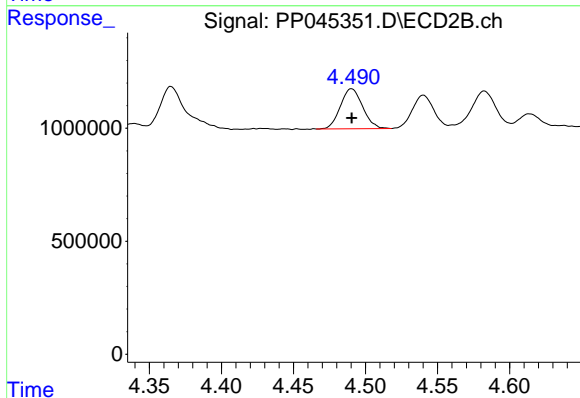
R.T.: 4.306 min
 Delta R.T.: 0.000 min
 Response: 3548675
 Conc: 53.76 ng/ml



#18 AR-1242-3

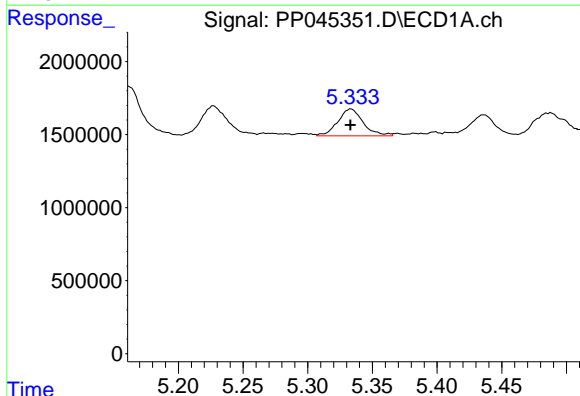
R.T.: 5.227 min
 Delta R.T.: 0.000 min
 Response: 2907825
 Conc: 54.77 ng/ml

Instrument :
 ECD_P
 ClientSampleId :
 AR1242ICC050



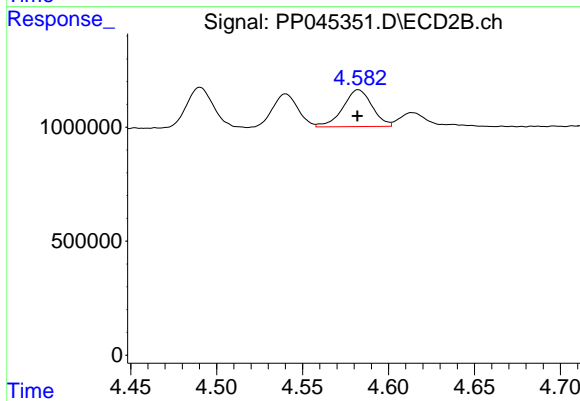
#18 AR-1242-3

R.T.: 4.490 min
 Delta R.T.: 0.000 min
 Response: 1909360
 Conc: 52.32 ng/ml



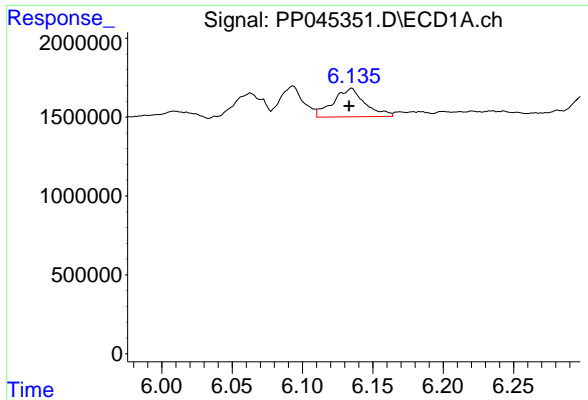
#19 AR-1242-4

R.T.: 5.334 min
 Delta R.T.: 0.000 min
 Response: 2504579
 Conc: 57.11 ng/ml



#19 AR-1242-4

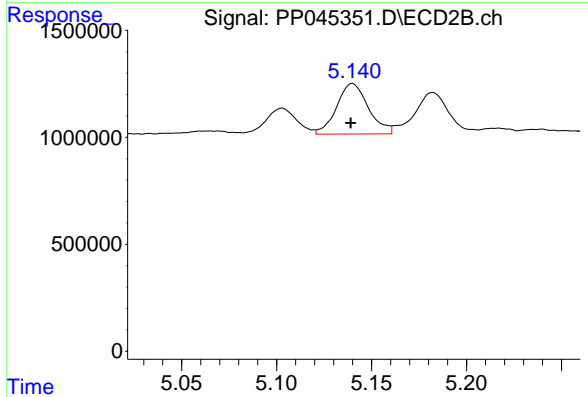
R.T.: 4.583 min
 Delta R.T.: 0.000 min
 Response: 1910509
 Conc: 53.70 ng/ml



#20 AR-1242-5

R.T.: 6.135 min
Delta R.T.: 0.002 min
Response: 2837124
Conc: 64.82 ng/ml

Instrument :
ECD_P
ClientSampleId :
AR1242ICC050



#20 AR-1242-5

R.T.: 5.140 min
Delta R.T.: 0.000 min
Response: 2746203
Conc: 60.09 ng/ml