

Data Path : Z:\pestpcbsrv\HPCHEM1\ECD\_P\Data\PP033022\  
 Data File : PP045364.D  
 Signal(s) : Signal #1: ECD1A.ch Signal #2: ECD2B.ch  
 Acq On : 30 Mar 2022 19:10  
 Operator : YP\AJ  
 Sample : PP033022ICV  
 Misc :  
 ALS Vial : 27 Sample Multiplier: 1

Instrument :  
 ECD\_P  
 ClientSampleId :  
 ICVPP033022

Integration File signal 1: autoint1.e  
 Integration File signal 2: autoint2.e  
 Quant Time: Mar 30 20:02:27 2022  
 Quant Method : Z:\pestpcbsrv\HPCHEM1\ECD\_P\methods\PP033022.M  
 Quant Title : GC EXTRACTABLES  
 QLast Update : Wed Mar 30 19:59:02 2022  
 Response via : Initial Calibration  
 Integrator: ChemStation

Volume Inj. : 2 µl  
 Signal #1 Phase : ZB-MR1 Signal #2 Phase: ZB-MR2  
 Signal #1 Info : 30Mx0.32mmx 0.50µ Signal #2 Info : 30M x 0.32mm x 0.25µm

Compound	RT#1	RT#2	Resp#1	Resp#2	ng/ml	ng/ml
System Monitoring Compounds						
1) SA Tetrachlo...	3.887	3.146	125.5E6	80667861	52.020	50.980
2) SA Decachlor...	10.003	8.498	72745011	76801673	50.770	50.646
Target Compounds						
3) L1 AR-1016-1	5.138	4.287	36918689	30263209	513.573	508.547
4) L1 AR-1016-2	5.161	4.306	54579382	42311731	508.183	503.234
5) L1 AR-1016-3	5.227	4.490	34179147	23279724	519.510	513.455
6) L1 AR-1016-4	5.333	4.539	27897950	18969002	509.361	513.323
7) L1 AR-1016-5	5.653	4.763	26823103	24450225	517.704	510.596
8) L2 AR-1221-1	4.109	3.371	3840612	3212960	152.951	154.503
9) L2 AR-1221-2	4.205	3.462	5664709	4603641	295.422	290.777
10) L2 AR-1221-3	4.285	3.540	20978571	16698023	349.017	356.962
11) L3 AR-1232-1	4.285	3.540	20978571	16698023	425.453	455.011
12) L3 AR-1232-2	4.848	4.306	28744889	42311731	1304.653	1239.765
13) L3 AR-1232-3	5.161	4.490	54579382	23279724	1267.797	1272.729
14) L3 AR-1232-4	5.333	4.582	27897950	22857106	1276.452	1395.439
15) L3 AR-1232-5	5.434	4.763	22604046	24450225	1419.225	1308.430
16) L4 AR-1242-1	5.138	4.287	36918689	30263209	634.373	621.837
17) L4 AR-1242-2	5.161	4.306	54579382	42311731	628.955	631.459
18) L4 AR-1242-3	5.227	4.490	34179147	23279724	631.711	632.018
19) L4 AR-1242-4	5.333	4.582	27897950	22857106	618.554	633.085
20) L4 AR-1242-5	6.134	5.138	4217812	18191552	90.969	382.629 #
21) L5 AR-1248-1	5.138	4.287	36918689	30263209	806.626	793.945
22) L5 AR-1248-2	5.434	4.539	22604046	18969002	367.417	368.264
23) L5 AR-1248-3	5.653	4.582	26823103	22857106	375.073	424.539
24) L5 AR-1248-4	6.092	4.763	4856692	24450225	64.602	379.990 #
25) L5 AR-1248-5	6.134	5.182	4217812	3303284	56.201	50.779
26) L6 AR-1254-1	6.062	5.138	17398855	18191552	244.374	186.942
27) L6 AR-1254-2	6.302	5.299	18278867	16504038	169.211	202.374
28) L6 AR-1254-3	6.701	5.746f	10187929	30858782	91.883	249.588 #
29) L6 AR-1254-4	7.014	5.979	7001222	4789374	87.108	59.731 #
30) L6 AR-1254-5	7.473	6.429	50713845	53913807	634.222	493.467
31) L7 AR-1260-1	6.880	5.870	40130850	41355721	503.203	498.897
32) L7 AR-1260-2	7.164	6.077	44927700	48919539	498.595	502.109
33) L7 AR-1260-3	7.558	6.239	34998471	46310606	505.199	500.651
34) L7 AR-1260-4	7.805	6.751	39127421	39178505	507.186	511.353
35) L7 AR-1260-5	8.148	7.018	74696930	90239136	529.054	510.132
36) L8 AR-1262-1	7.558	6.471	34998471	42490408	347.003	378.445
37) L8 AR-1262-2	8.148	6.751	74696930	39178505	444.078	387.866
38) L8 AR-1262-3	8.491	7.324	47977521	21910449	415.158	270.753 #
39) L8 AR-1262-4	8.570	7.394	12598909	67841013	140.693	458.613 #
40) L8 AR-1262-5	9.247	7.937	22229820	26820334	363.704	368.480
41) L9 AR-1268-1	8.491f	7.324	47977521	21910449	237.442	97.912 #

Data Path : Z:\pestpcbsrv\HPCHEM1\ECD\_P\Data\PP033022\  
 Data File : PP045364.D  
 Signal(s) : Signal #1: ECD1A.ch Signal #2: ECD2B.ch  
 Acq On : 30 Mar 2022 19:10  
 Operator : YP\AJ  
 Sample : PP033022ICV  
 Misc :  
 ALS Vial : 27 Sample Multiplier: 1

Instrument :  
 ECD\_P  
 ClientSampleId :  
 ICVPP033022

Integration File signal 1: autoint1.e  
 Integration File signal 2: autoint2.e  
 Quant Time: Mar 30 20:02:27 2022  
 Quant Method : Z:\pestpcbsrv\HPCHEM1\ECD\_P\methods\PP033022.M  
 Quant Title : GC EXTRACTABLES  
 QLast Update : Wed Mar 30 19:59:02 2022  
 Response via : Initial Calibration  
 Integrator: ChemStation

Volume Inj. : 2 µl  
 Signal #1 Phase : ZB-MR1 Signal #2 Phase: ZB-MR2  
 Signal #1 Info : 30Mx0.32mmx 0.50µ Signal #2 Info : 30M x 0.32mm x 0.25µm

	Compound	RT#1	RT#2	Resp#1	Resp#2	ng/ml	ng/ml
42)	L9 AR-1268-2	8.570	7.394	12598909	67841013	67.412	335.037 #
43)	L9 AR-1268-3	8.808	7.615	1430678	1245511	8.659	7.280
44)	L9 AR-1268-4	9.247	7.937	22229820	26820334	332.065	338.795
45)	L9 AR-1268-5	9.666	8.239	7324917	7826434	14.111	14.612

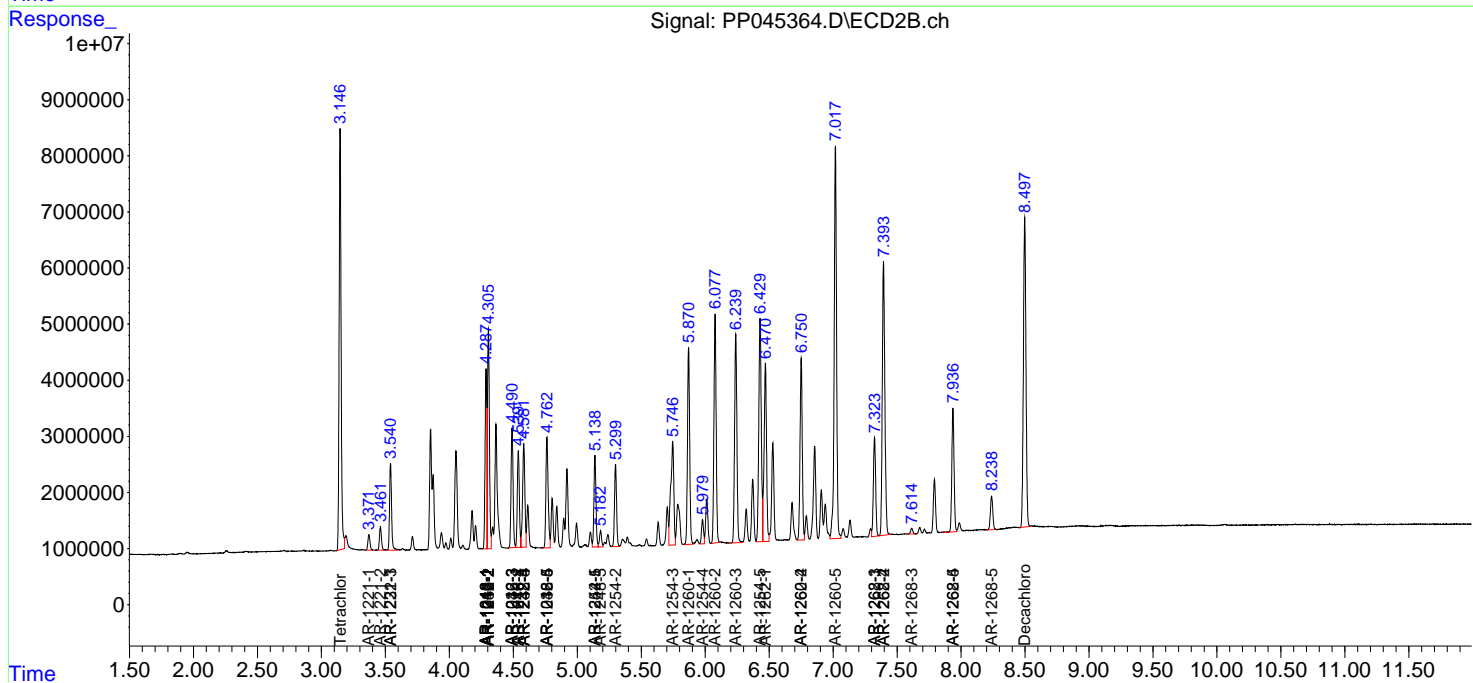
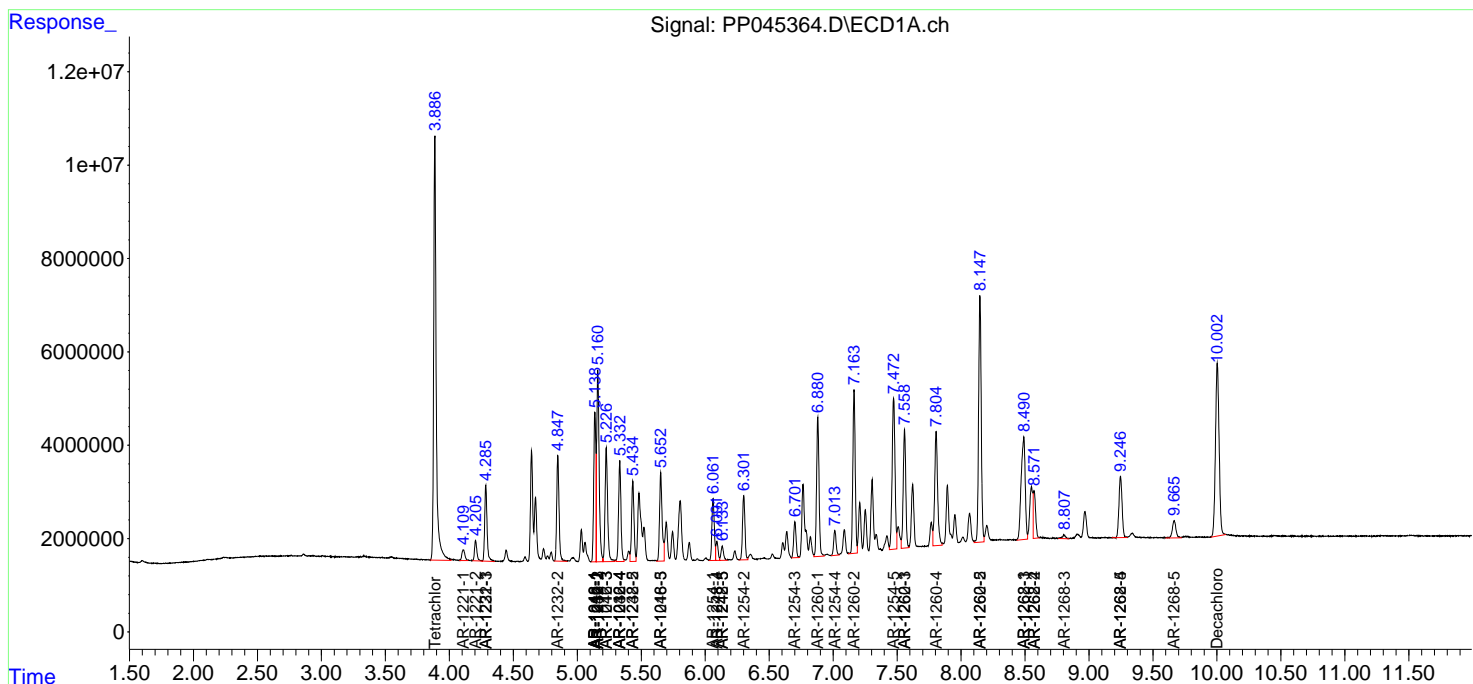
(f)=RT Delta > 1/2 Window (#)=Amounts differ by > 25% (m)=manual int.

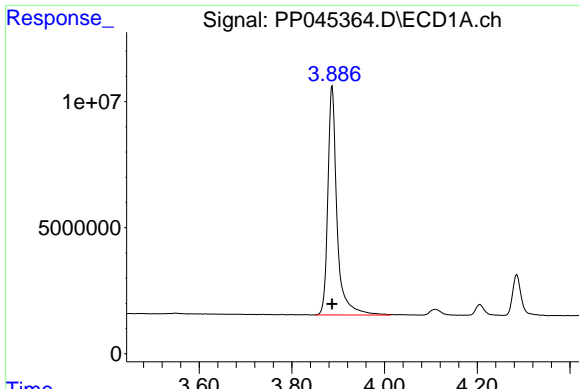
Data Path : Z:\pestpcbsrv\HPCHEM1\ECD\_P\Data\PP033022\  
 Data File : PP045364.D  
 Signal(s) : Signal #1: ECD1A.ch Signal #2: ECD2B.ch  
 Acq On : 30 Mar 2022 19:10  
 Operator : YP\AJ  
 Sample : PP033022ICV  
 Misc :  
 ALS Vial : 27 Sample Multiplier: 1

Instrument :  
 ECD\_P  
 ClientSampleId :  
 ICVPP033022

Integration File signal 1: autoint1.e  
 Integration File signal 2: autoint2.e  
 Quant Time: Mar 30 20:02:27 2022  
 Quant Method : Z:\pestpcbsrv\HPCHEM1\ECD\_P\methods\PP033022.M  
 Quant Title : GC EXTRACTABLES  
 QLast Update : Wed Mar 30 19:59:02 2022  
 Response via : Initial Calibration  
 Integrator: ChemStation

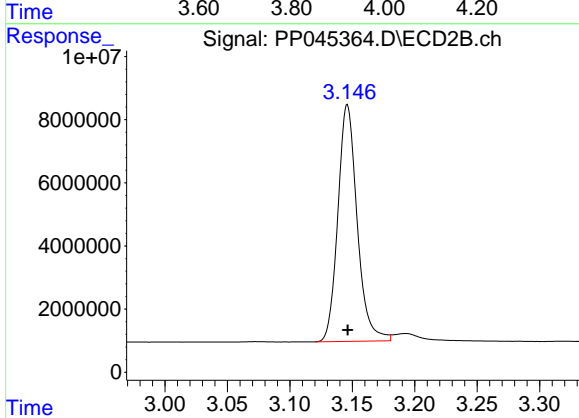
Volume Inj. : 2 µl  
 Signal #1 Phase : ZB-MR1 Signal #2 Phase: ZB-MR2  
 Signal #1 Info : 30Mx0.32mmx 0.50µ Signal #2 Info : 30M x 0.32mm x 0.25µm



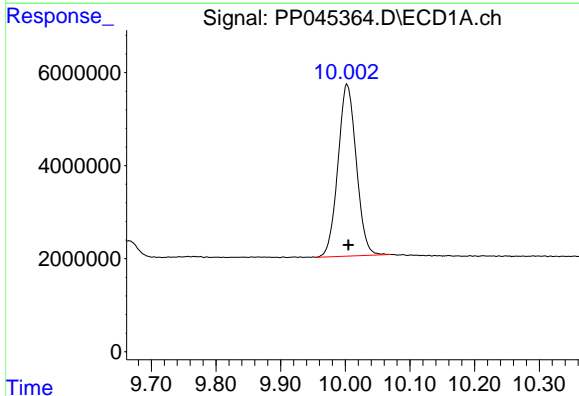


#1 Tetrachloro-m-xylene  
 R.T.: 3.887 min  
 Delta R.T.: 0.000 min  
 Response: 125513838  
 Conc: 52.02 ng/ml

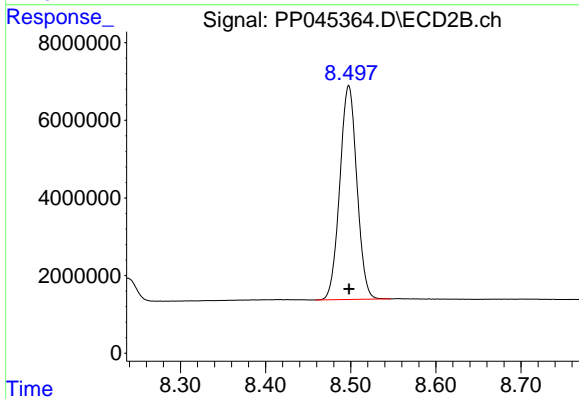
Instrument :  
 ECD\_P  
 ClientSampleId :  
 ICVPP033022



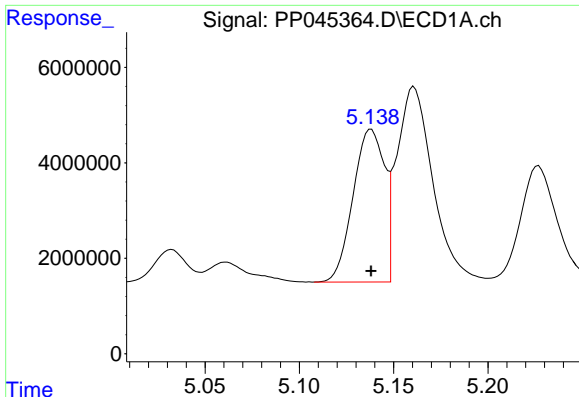
#1 Tetrachloro-m-xylene  
 R.T.: 3.146 min  
 Delta R.T.: 0.000 min  
 Response: 80667861  
 Conc: 50.98 ng/ml



#2 Decachlorobiphenyl  
 R.T.: 10.003 min  
 Delta R.T.: -0.002 min  
 Response: 72745011  
 Conc: 50.77 ng/ml



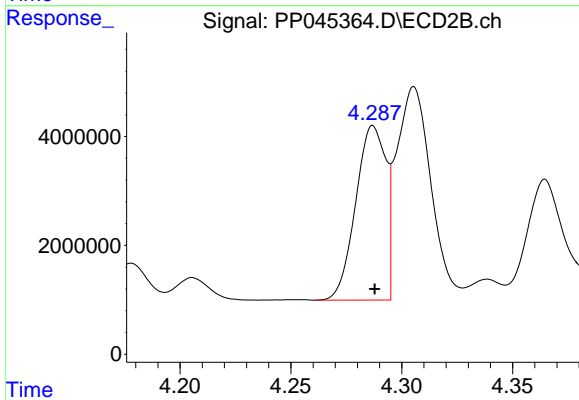
#2 Decachlorobiphenyl  
 R.T.: 8.498 min  
 Delta R.T.: 0.000 min  
 Response: 76801673  
 Conc: 50.65 ng/ml



#3 AR-1016-1

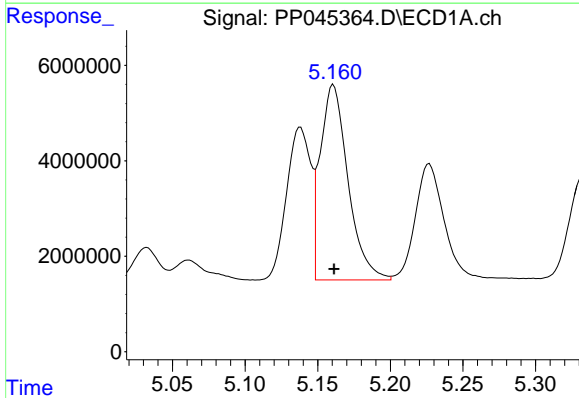
R.T.: 5.138 min  
 Delta R.T.: 0.000 min  
 Response: 36918689  
 Conc: 513.57 ng/ml

Instrument :  
 ECD\_P  
 ClientSampleId :  
 ICVPP033022



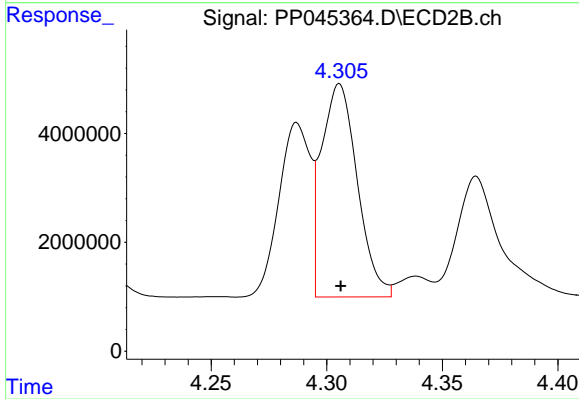
#3 AR-1016-1

R.T.: 4.287 min  
 Delta R.T.: 0.000 min  
 Response: 30263209  
 Conc: 508.55 ng/ml



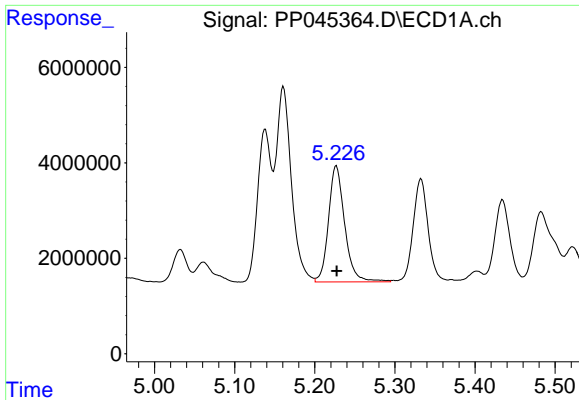
#4 AR-1016-2

R.T.: 5.161 min  
 Delta R.T.: 0.000 min  
 Response: 54579382  
 Conc: 508.18 ng/ml



#4 AR-1016-2

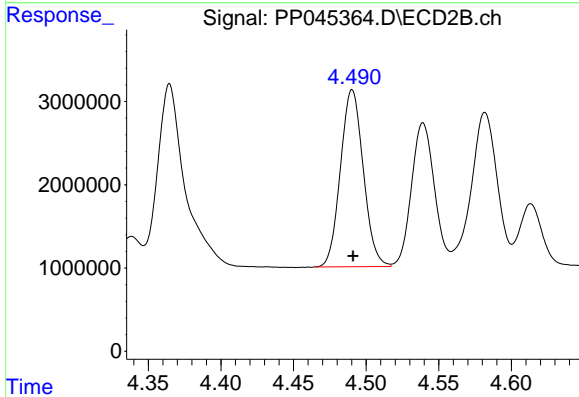
R.T.: 4.306 min  
 Delta R.T.: 0.000 min  
 Response: 42311731  
 Conc: 503.23 ng/ml



#5 AR-1016-3

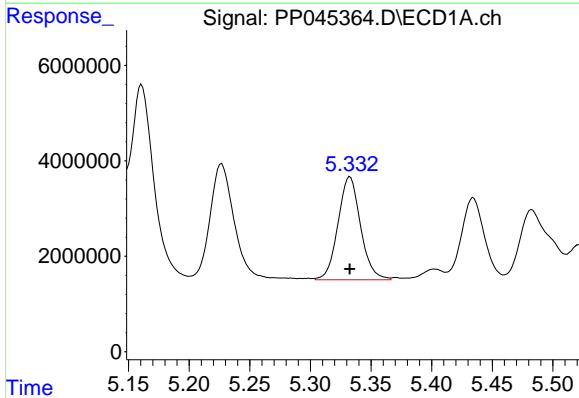
R.T.: 5.227 min  
 Delta R.T.: 0.000 min  
 Response: 34179147  
 Conc: 519.51 ng/ml

Instrument :  
 ECD\_P  
 ClientSampleId :  
 ICVPP033022



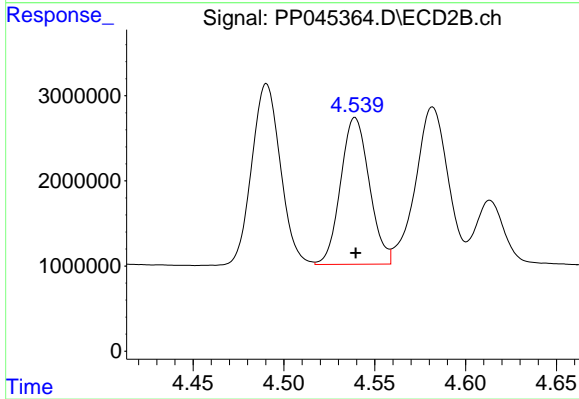
#5 AR-1016-3

R.T.: 4.490 min  
 Delta R.T.: 0.000 min  
 Response: 23279724  
 Conc: 513.46 ng/ml



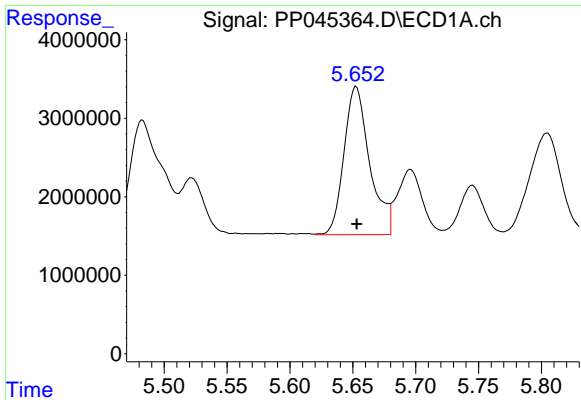
#6 AR-1016-4

R.T.: 5.333 min  
 Delta R.T.: 0.000 min  
 Response: 27897950  
 Conc: 509.36 ng/ml



#6 AR-1016-4

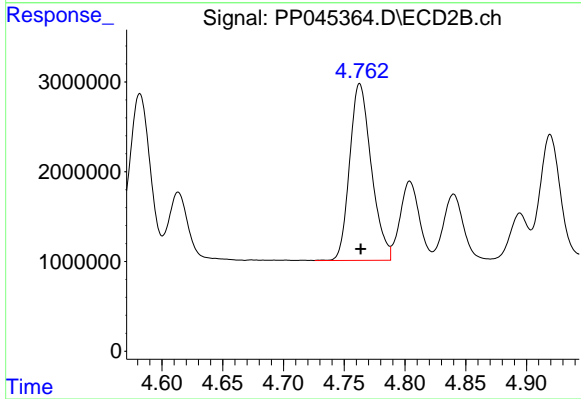
R.T.: 4.539 min  
 Delta R.T.: 0.000 min  
 Response: 18969002  
 Conc: 513.32 ng/ml



#7 AR-1016-5

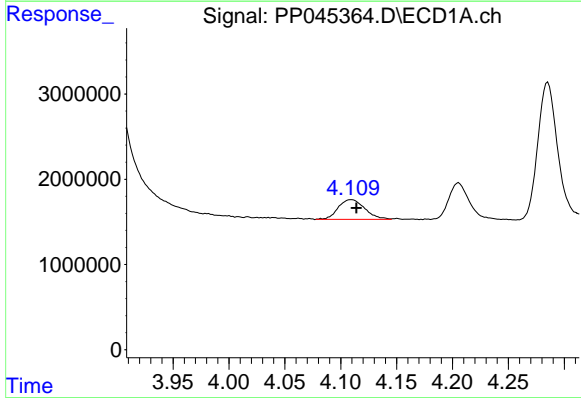
R.T.: 5.653 min  
 Delta R.T.: 0.000 min  
 Response: 26823103  
 Conc: 517.70 ng/ml

Instrument :  
 ECD\_P  
 ClientSampleId :  
 ICVPP033022



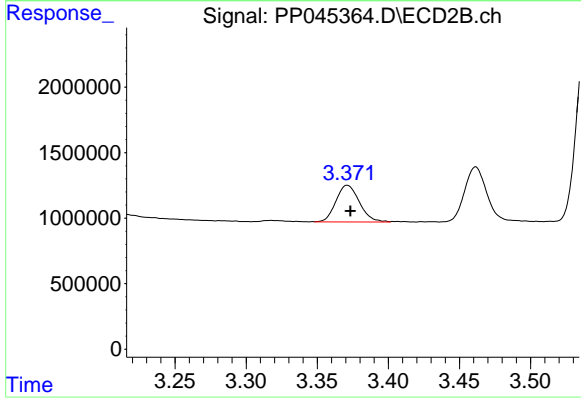
#7 AR-1016-5

R.T.: 4.763 min  
 Delta R.T.: 0.000 min  
 Response: 24450225  
 Conc: 510.60 ng/ml



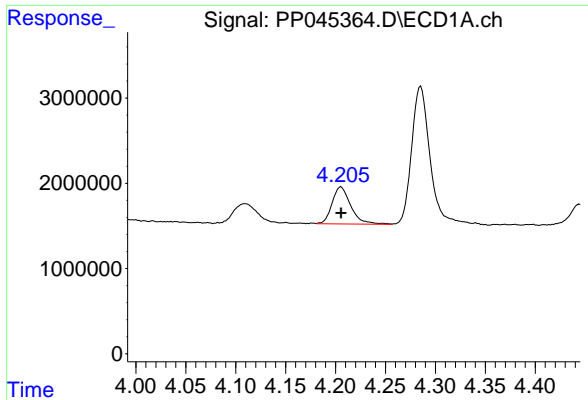
#8 AR-1221-1

R.T.: 4.109 min  
 Delta R.T.: -0.005 min  
 Response: 3840612  
 Conc: 152.95 ng/ml



#8 AR-1221-1

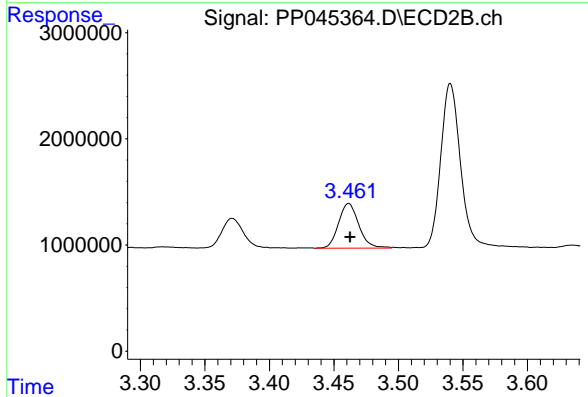
R.T.: 3.371 min  
 Delta R.T.: -0.002 min  
 Response: 3212960  
 Conc: 154.50 ng/ml



#9 AR-1221-2

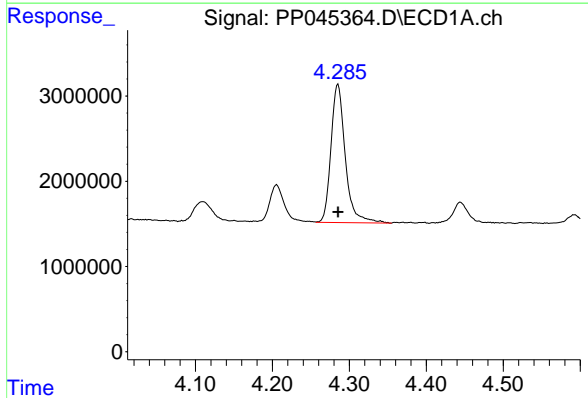
R.T.: 4.205 min  
 Delta R.T.: 0.000 min  
 Response: 5664709  
 Conc: 295.42 ng/ml

Instrument :  
 ECD\_P  
 ClientSampleId :  
 ICVPP033022



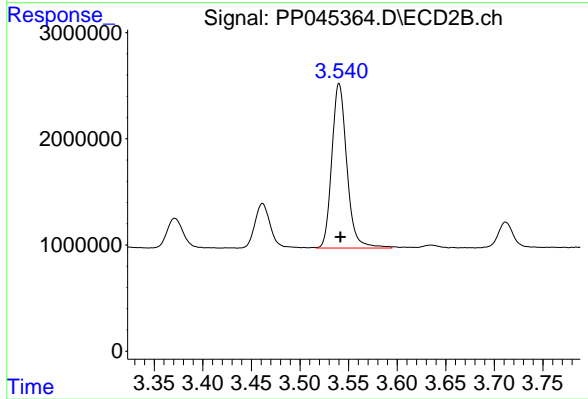
#9 AR-1221-2

R.T.: 3.462 min  
 Delta R.T.: 0.000 min  
 Response: 4603641  
 Conc: 290.78 ng/ml



#10 AR-1221-3

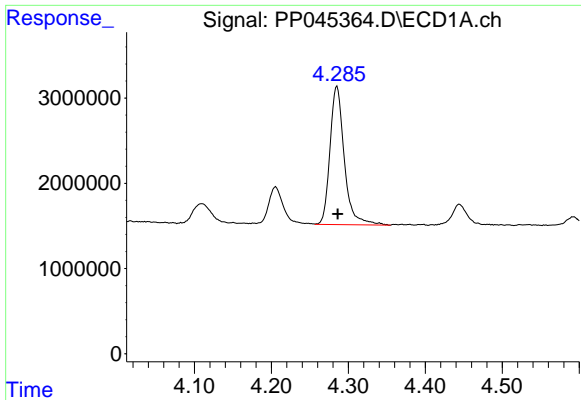
R.T.: 4.285 min  
 Delta R.T.: 0.000 min  
 Response: 20978571  
 Conc: 349.02 ng/ml



#10 AR-1221-3

R.T.: 3.540 min  
 Delta R.T.: -0.001 min  
 Response: 16698023  
 Conc: 356.96 ng/ml

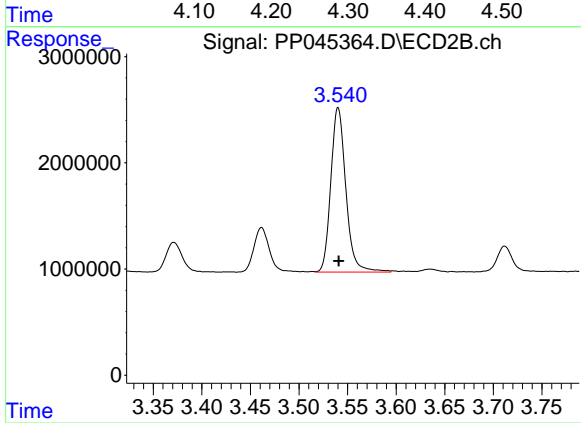




#11 AR-1232-1

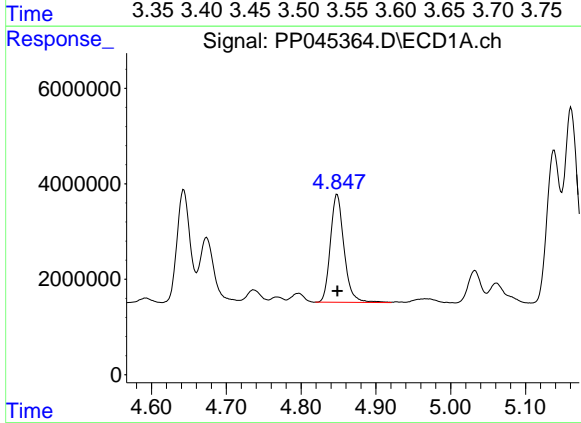
R.T.: 4.285 min  
 Delta R.T.: -0.001 min  
 Response: 20978571  
 Conc: 425.45 ng/ml

Instrument :  
 ECD\_P  
 ClientSampleId :  
 ICVPP033022



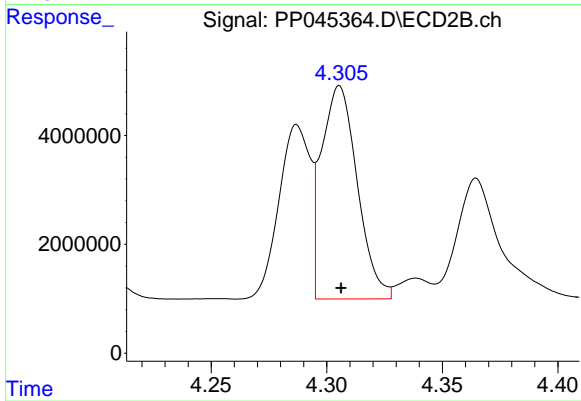
#11 AR-1232-1

R.T.: 3.540 min  
 Delta R.T.: 0.000 min  
 Response: 16698023  
 Conc: 455.01 ng/ml



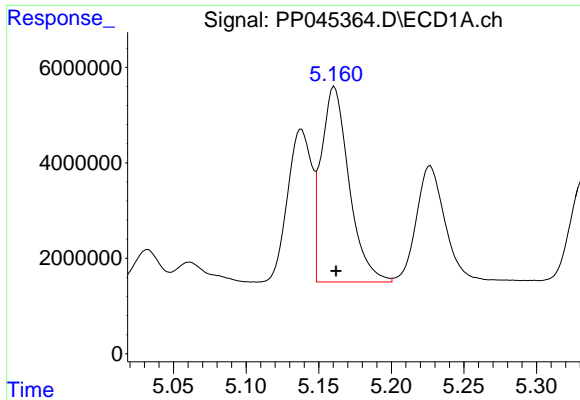
#12 AR-1232-2

R.T.: 4.848 min  
 Delta R.T.: 0.000 min  
 Response: 28744889  
 Conc: 1304.65 ng/ml



#12 AR-1232-2

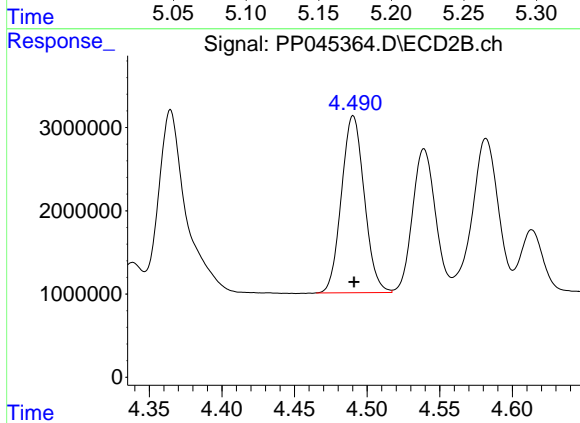
R.T.: 4.306 min  
 Delta R.T.: 0.000 min  
 Response: 42311731  
 Conc: 1239.77 ng/ml



#13 AR-1232-3

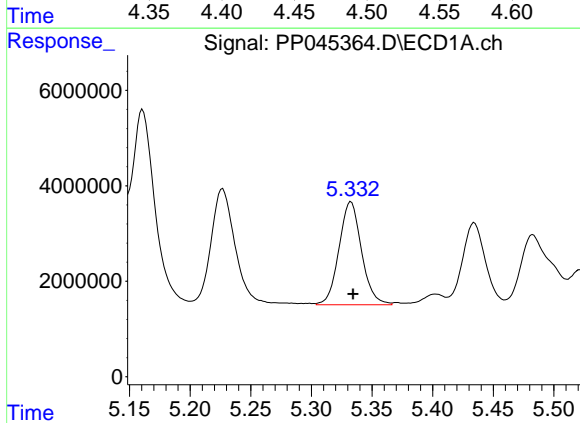
R.T.: 5.161 min  
 Delta R.T.: -0.001 min  
 Response: 54579382  
 Conc: 1267.80 ng/m

Instrument :  
 ECD\_P  
 ClientSampleId :  
 ICVPP033022



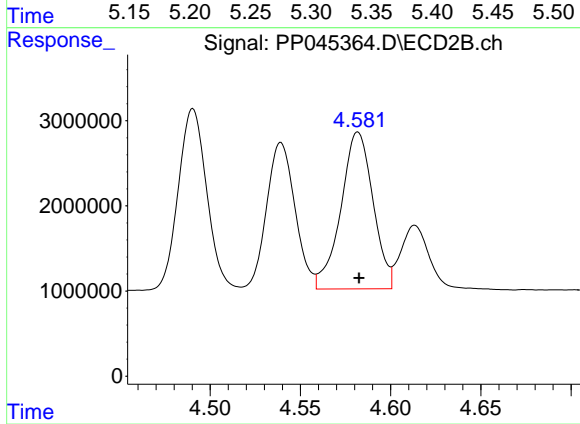
#13 AR-1232-3

R.T.: 4.490 min  
 Delta R.T.: 0.000 min  
 Response: 23279724  
 Conc: 1272.73 ng/ml



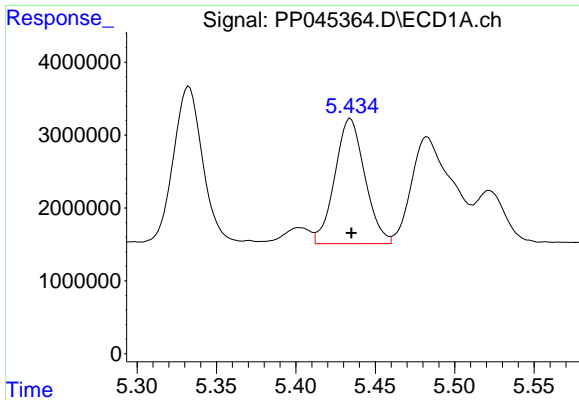
#14 AR-1232-4

R.T.: 5.333 min  
 Delta R.T.: -0.002 min  
 Response: 27897950  
 Conc: 1276.45 ng/ml



#14 AR-1232-4

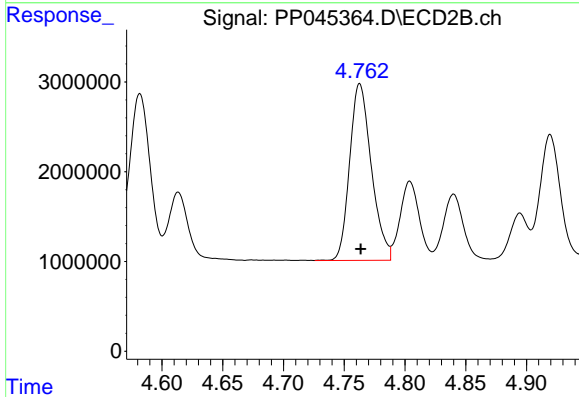
R.T.: 4.582 min  
 Delta R.T.: 0.000 min  
 Response: 22857106  
 Conc: 1395.44 ng/ml



#15 AR-1232-5

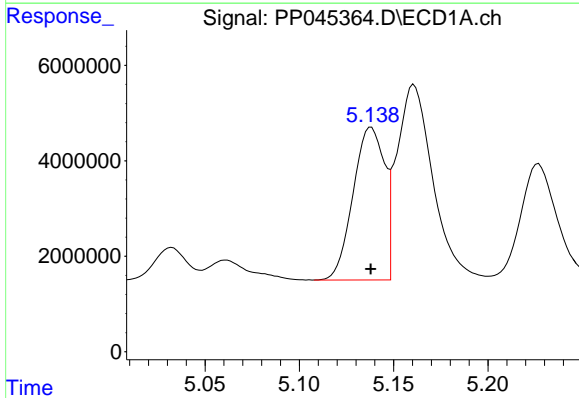
R.T.: 5.434 min  
 Delta R.T.: 0.000 min  
 Response: 22604046  
 Conc: 1419.22 ng/ml

Instrument :  
 ECD\_P  
 ClientSampleId :  
 ICVPP033022



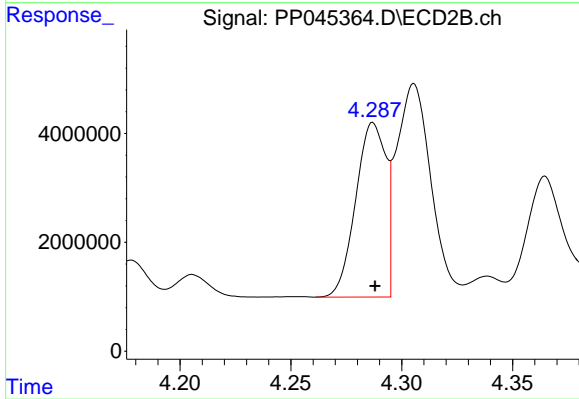
#15 AR-1232-5

R.T.: 4.763 min  
 Delta R.T.: 0.000 min  
 Response: 24450225  
 Conc: 1308.43 ng/ml



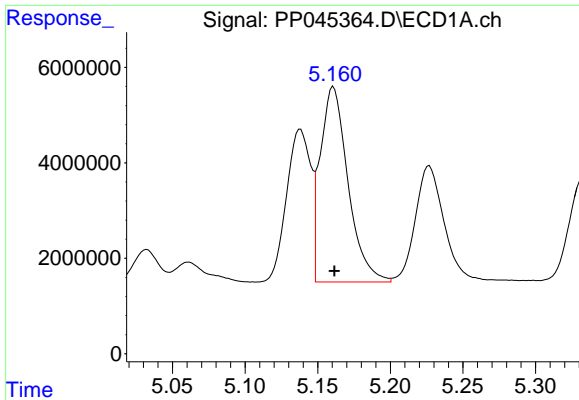
#16 AR-1242-1

R.T.: 5.138 min  
 Delta R.T.: 0.000 min  
 Response: 36918689  
 Conc: 634.37 ng/ml



#16 AR-1242-1

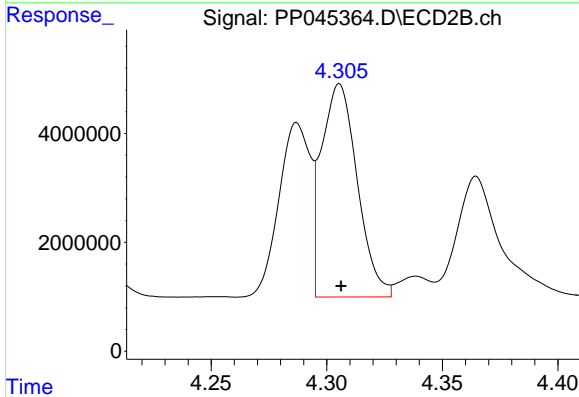
R.T.: 4.287 min  
 Delta R.T.: 0.000 min  
 Response: 30263209  
 Conc: 621.84 ng/ml



#17 AR-1242-2

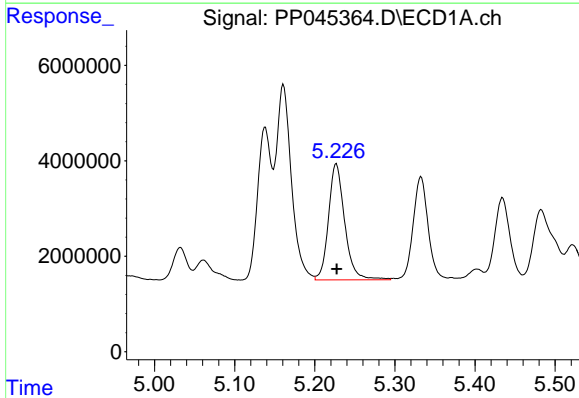
R.T.: 5.161 min  
 Delta R.T.: 0.000 min  
 Response: 54579382  
 Conc: 628.96 ng/ml

Instrument :  
 ECD\_P  
 ClientSampleId :  
 ICVPP033022



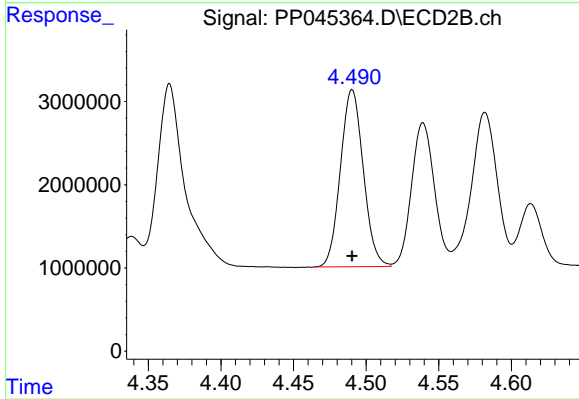
#17 AR-1242-2

R.T.: 4.306 min  
 Delta R.T.: 0.000 min  
 Response: 42311731  
 Conc: 631.46 ng/ml



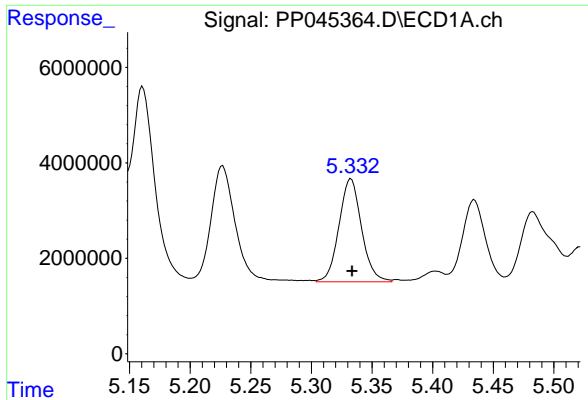
#18 AR-1242-3

R.T.: 5.227 min  
 Delta R.T.: 0.000 min  
 Response: 34179147  
 Conc: 631.71 ng/ml



#18 AR-1242-3

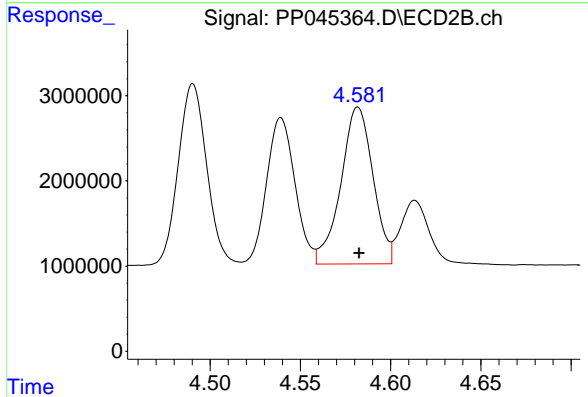
R.T.: 4.490 min  
 Delta R.T.: 0.000 min  
 Response: 23279724  
 Conc: 632.02 ng/ml



#19 AR-1242-4

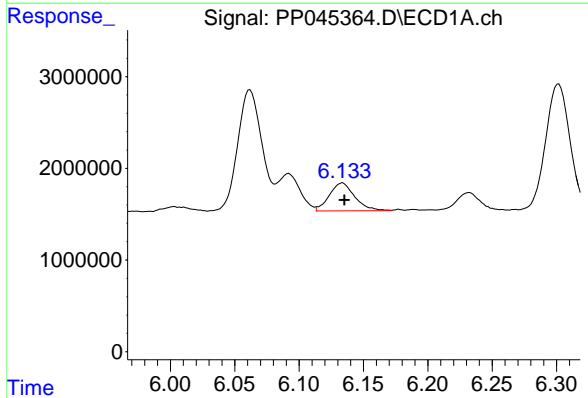
R.T.: 5.333 min  
 Delta R.T.: 0.000 min  
 Response: 27897950  
 Conc: 618.55 ng/ml

Instrument :  
 ECD\_P  
 ClientSampleId :  
 ICVPP033022



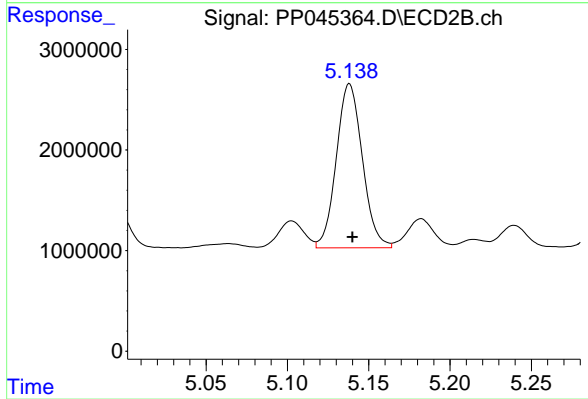
#19 AR-1242-4

R.T.: 4.582 min  
 Delta R.T.: 0.000 min  
 Response: 22857106  
 Conc: 633.08 ng/ml



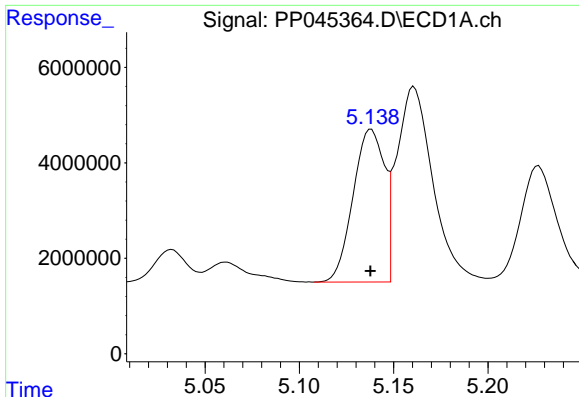
#20 AR-1242-5

R.T.: 6.134 min  
 Delta R.T.: -0.001 min  
 Response: 4217812  
 Conc: 90.97 ng/ml



#20 AR-1242-5

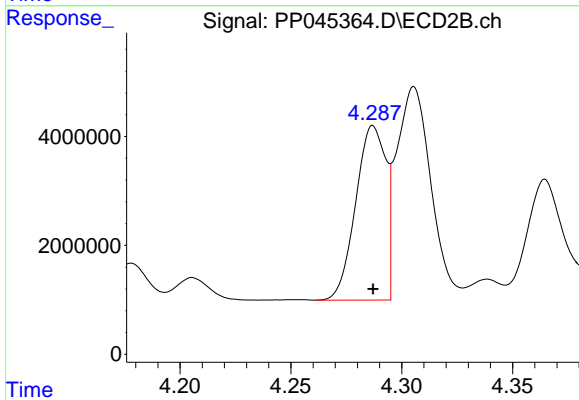
R.T.: 5.138 min  
 Delta R.T.: -0.002 min  
 Response: 18191552  
 Conc: 382.63 ng/ml



#21 AR-1248-1

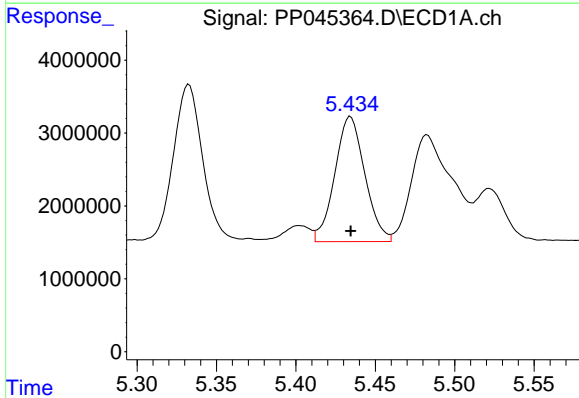
R.T.: 5.138 min  
 Delta R.T.: 0.000 min  
 Response: 36918689  
 Conc: 806.63 ng/ml

Instrument :  
 ECD\_P  
 ClientSampleId :  
 ICVPP033022



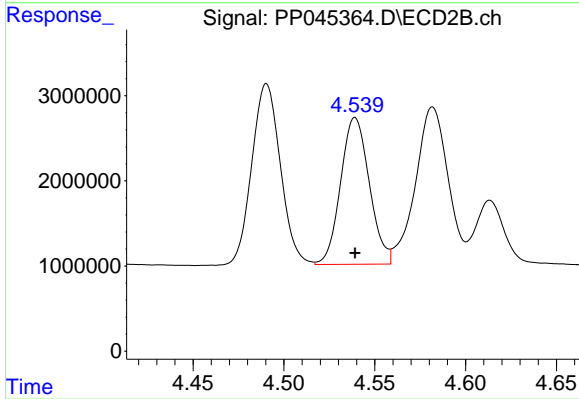
#21 AR-1248-1

R.T.: 4.287 min  
 Delta R.T.: 0.000 min  
 Response: 30263209  
 Conc: 793.95 ng/ml



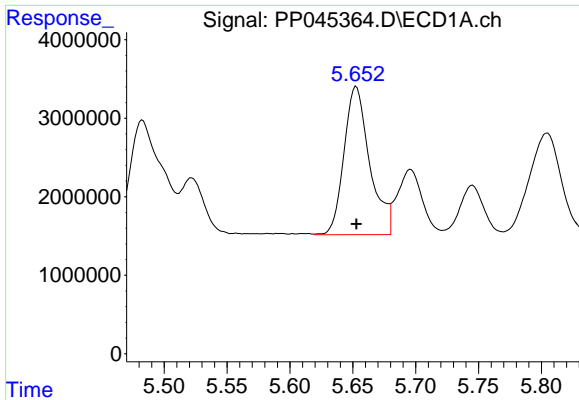
#22 AR-1248-2

R.T.: 5.434 min  
 Delta R.T.: 0.000 min  
 Response: 22604046  
 Conc: 367.42 ng/ml



#22 AR-1248-2

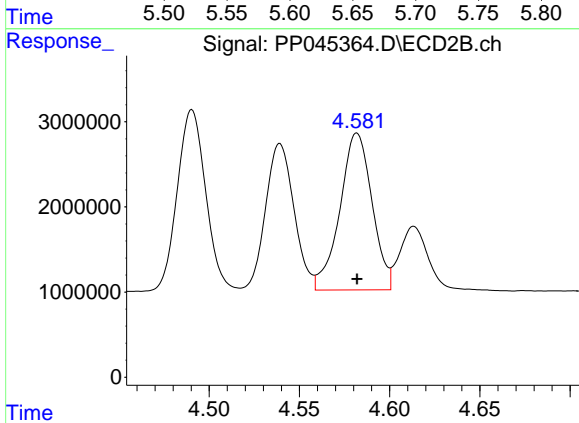
R.T.: 4.539 min  
 Delta R.T.: 0.000 min  
 Response: 18969002  
 Conc: 368.26 ng/ml



#23 AR-1248-3

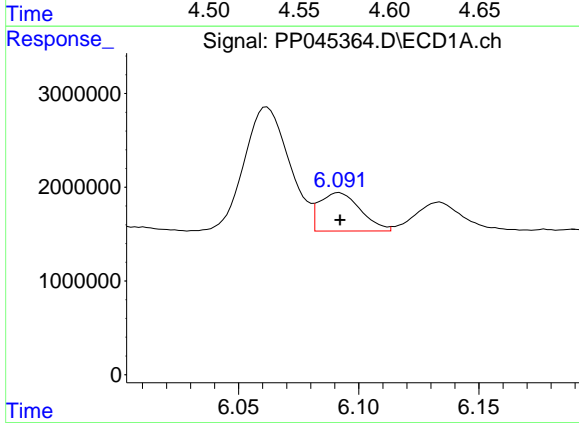
R.T.: 5.653 min  
 Delta R.T.: 0.000 min  
 Response: 26823103  
 Conc: 375.07 ng/ml

Instrument :  
 ECD\_P  
 ClientSampleId :  
 ICVPP033022



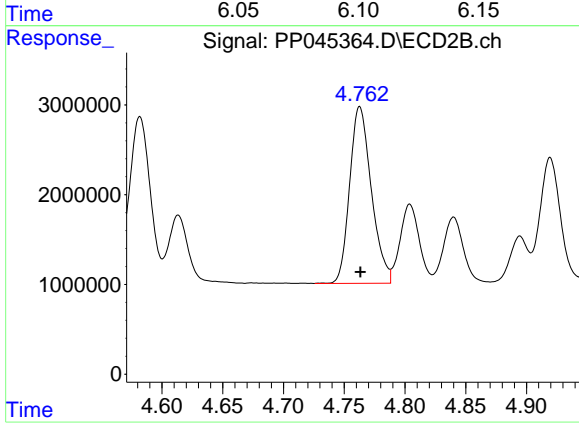
#23 AR-1248-3

R.T.: 4.582 min  
 Delta R.T.: 0.000 min  
 Response: 22857106  
 Conc: 424.54 ng/ml



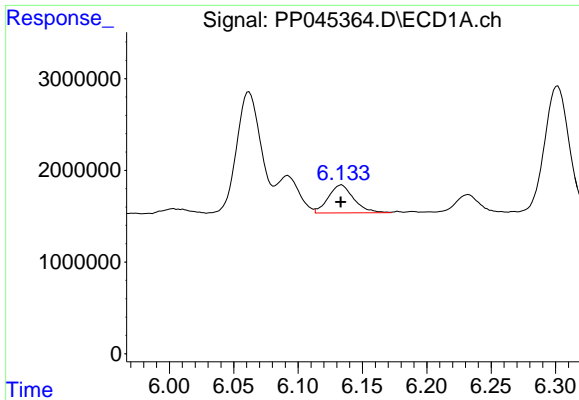
#24 AR-1248-4

R.T.: 6.092 min  
 Delta R.T.: 0.000 min  
 Response: 4856692  
 Conc: 64.60 ng/ml



#24 AR-1248-4

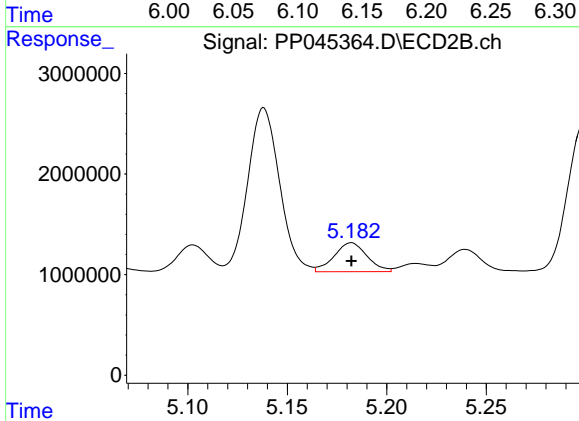
R.T.: 4.763 min  
 Delta R.T.: 0.000 min  
 Response: 24450225  
 Conc: 379.99 ng/ml



#25 AR-1248-5

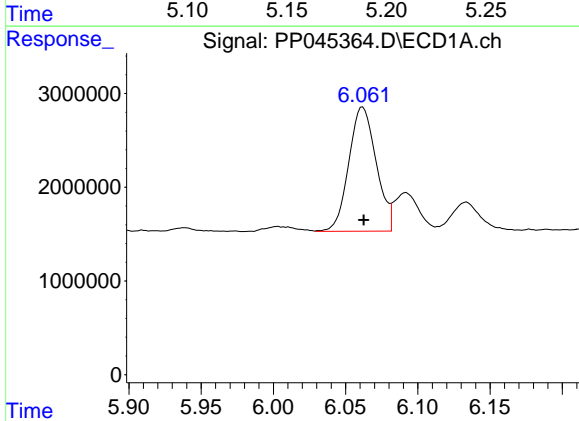
R.T.: 6.134 min  
 Delta R.T.: 0.000 min  
 Response: 4217812  
 Conc: 56.20 ng/ml

Instrument :  
 ECD\_P  
 ClientSampleId :  
 ICVPP033022



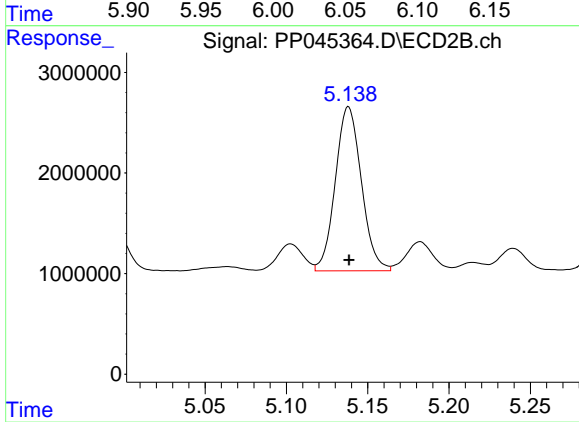
#25 AR-1248-5

R.T.: 5.182 min  
 Delta R.T.: 0.000 min  
 Response: 3303284  
 Conc: 50.78 ng/ml



#26 AR-1254-1

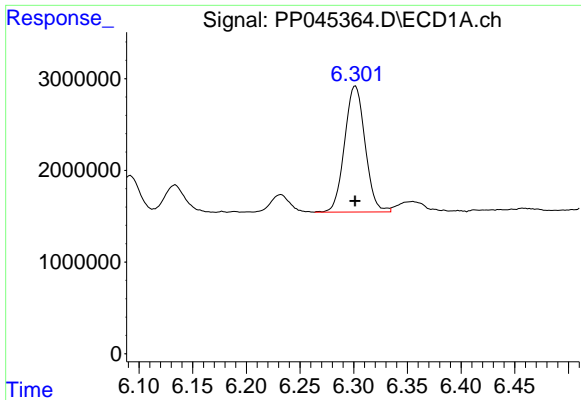
R.T.: 6.062 min  
 Delta R.T.: 0.000 min  
 Response: 17398855  
 Conc: 244.37 ng/ml



#26 AR-1254-1

R.T.: 5.138 min  
 Delta R.T.: 0.000 min  
 Response: 18191552  
 Conc: 186.94 ng/ml

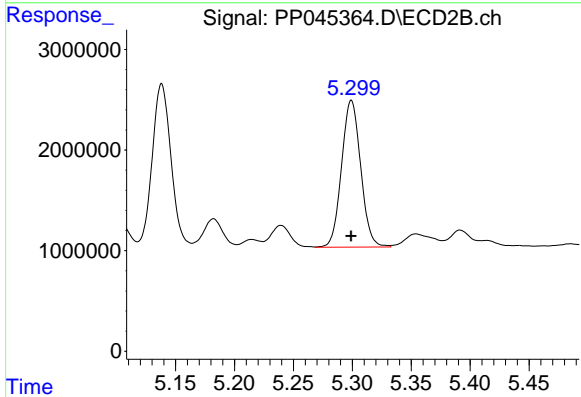




#27 AR-1254-2

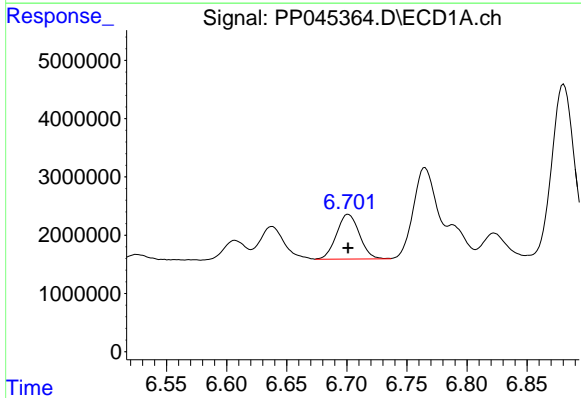
R.T.: 6.302 min  
 Delta R.T.: 0.000 min  
 Response: 18278867  
 Conc: 169.21 ng/ml

Instrument :  
 ECD\_P  
 ClientSampleId :  
 ICVPP033022



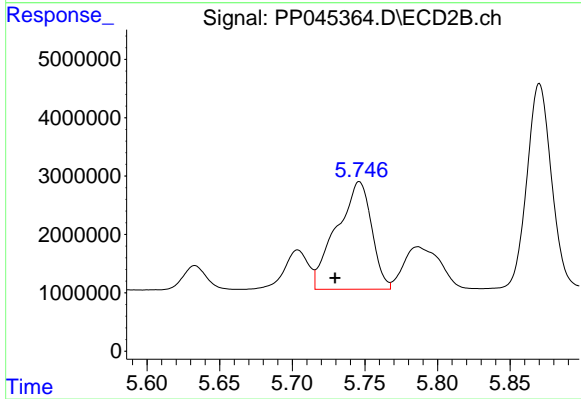
#27 AR-1254-2

R.T.: 5.299 min  
 Delta R.T.: 0.000 min  
 Response: 16504038  
 Conc: 202.37 ng/ml



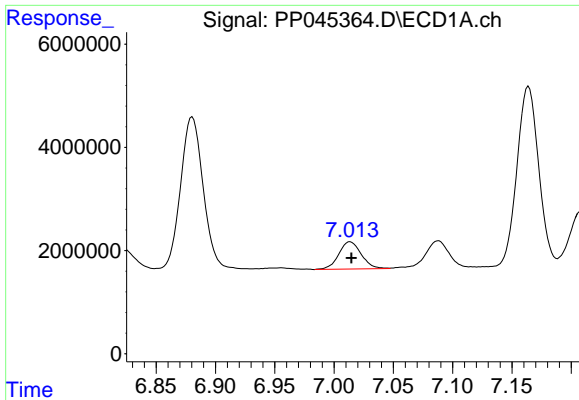
#28 AR-1254-3

R.T.: 6.701 min  
 Delta R.T.: 0.000 min  
 Response: 10187929  
 Conc: 91.88 ng/ml



#28 AR-1254-3

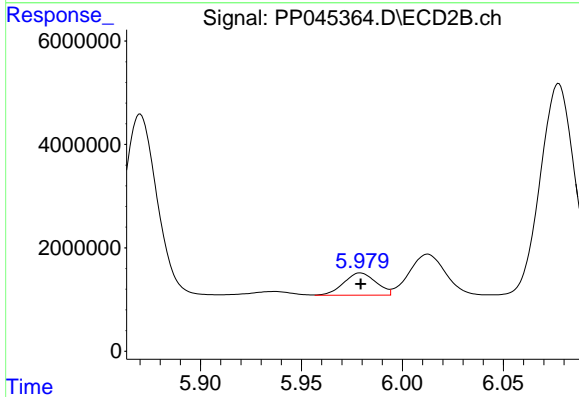
R.T.: 5.746 min  
 Delta R.T.: 0.017 min  
 Response: 30858782  
 Conc: 249.59 ng/ml



#29 AR-1254-4

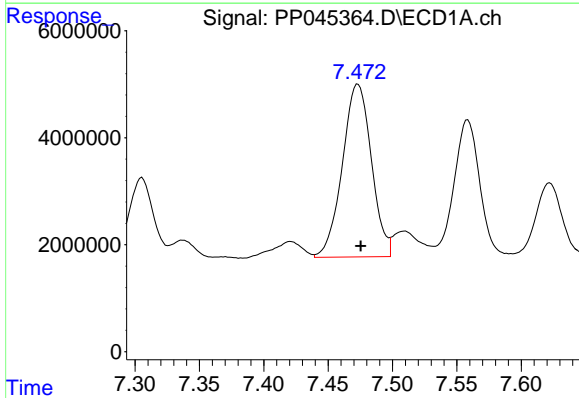
R.T.: 7.014 min  
 Delta R.T.: 0.000 min  
 Response: 7001222  
 Conc: 87.11 ng/ml

Instrument :  
 ECD\_P  
 ClientSampleId :  
 ICVPP033022



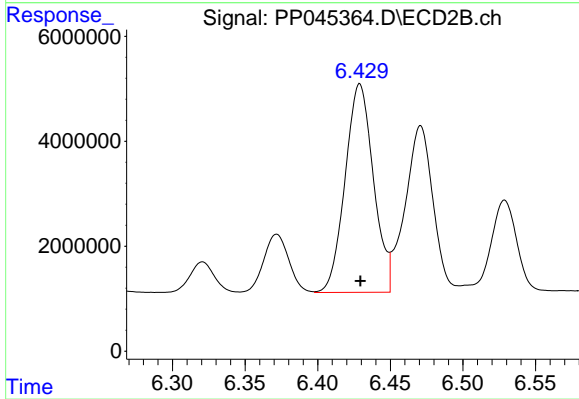
#29 AR-1254-4

R.T.: 5.979 min  
 Delta R.T.: 0.000 min  
 Response: 4789374  
 Conc: 59.73 ng/ml



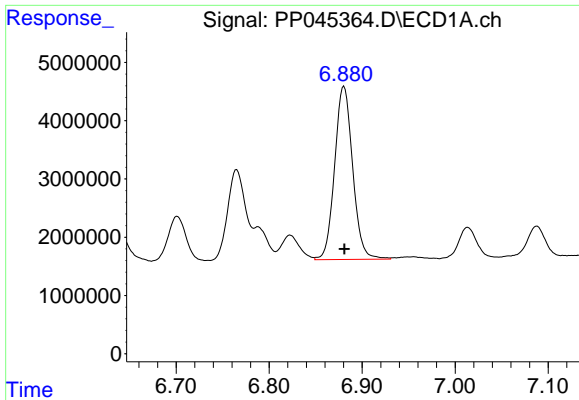
#30 AR-1254-5

R.T.: 7.473 min  
 Delta R.T.: -0.002 min  
 Response: 50713845  
 Conc: 634.22 ng/ml



#30 AR-1254-5

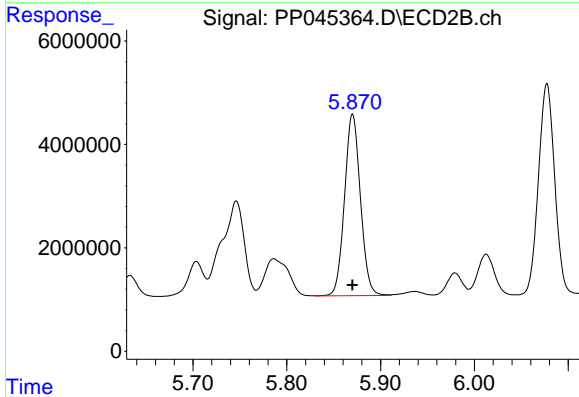
R.T.: 6.429 min  
 Delta R.T.: 0.000 min  
 Response: 53913807  
 Conc: 493.47 ng/ml



#31 AR-1260-1

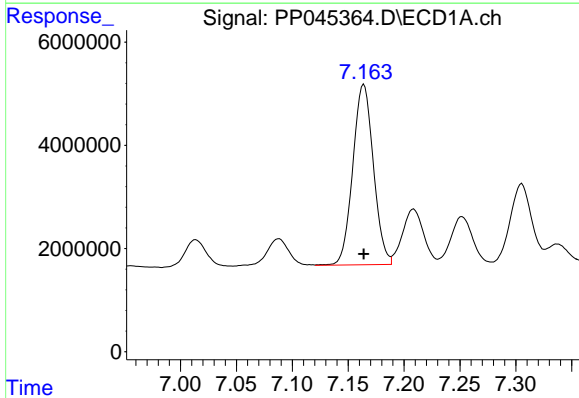
R.T.: 6.880 min  
 Delta R.T.: 0.000 min  
 Response: 40130850  
 Conc: 503.20 ng/ml

Instrument :  
 ECD\_P  
 ClientSampleId :  
 ICVPP033022



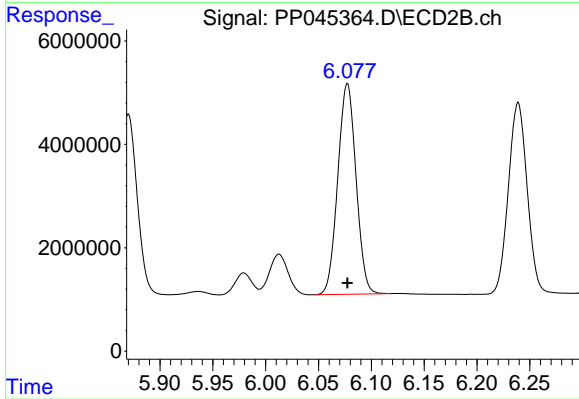
#31 AR-1260-1

R.T.: 5.870 min  
 Delta R.T.: 0.000 min  
 Response: 4135721  
 Conc: 498.90 ng/ml



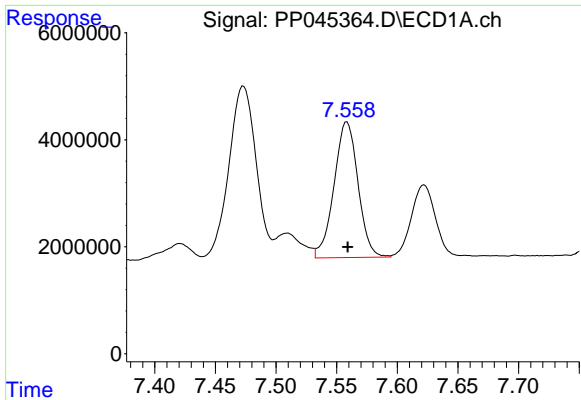
#32 AR-1260-2

R.T.: 7.164 min  
 Delta R.T.: 0.000 min  
 Response: 44927700  
 Conc: 498.59 ng/ml



#32 AR-1260-2

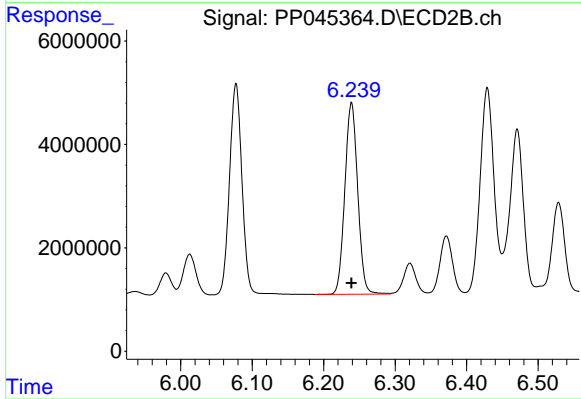
R.T.: 6.077 min  
 Delta R.T.: 0.000 min  
 Response: 48919539  
 Conc: 502.11 ng/ml



#33 AR-1260-3

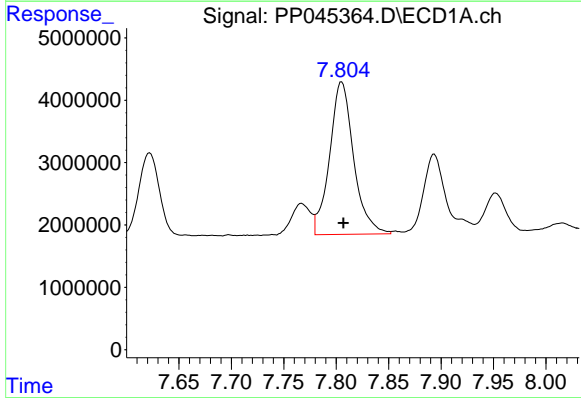
R.T.: 7.558 min  
 Delta R.T.: 0.000 min  
 Response: 34998471  
 Conc: 505.20 ng/ml

Instrument :  
 ECD\_P  
 ClientSampleId :  
 ICVPP033022



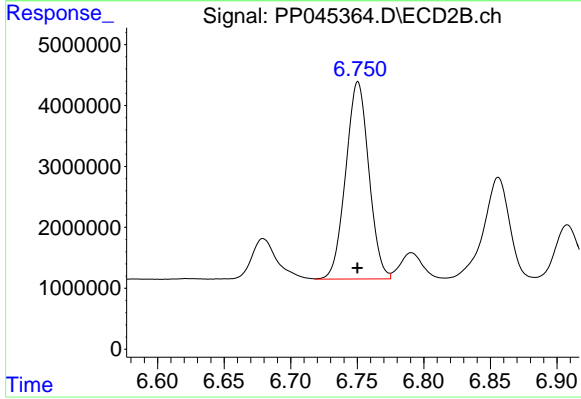
#33 AR-1260-3

R.T.: 6.239 min  
 Delta R.T.: 0.000 min  
 Response: 46310606  
 Conc: 500.65 ng/ml



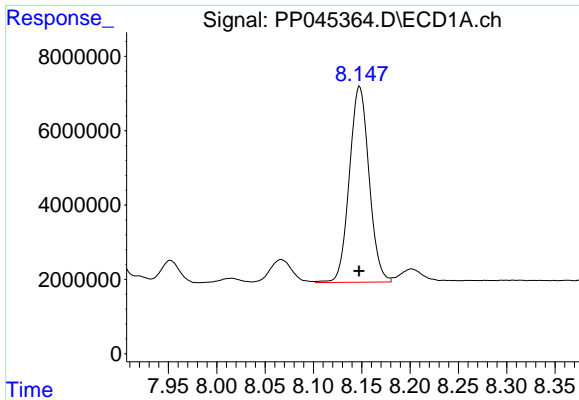
#34 AR-1260-4

R.T.: 7.805 min  
 Delta R.T.: -0.002 min  
 Response: 39127421  
 Conc: 507.19 ng/ml



#34 AR-1260-4

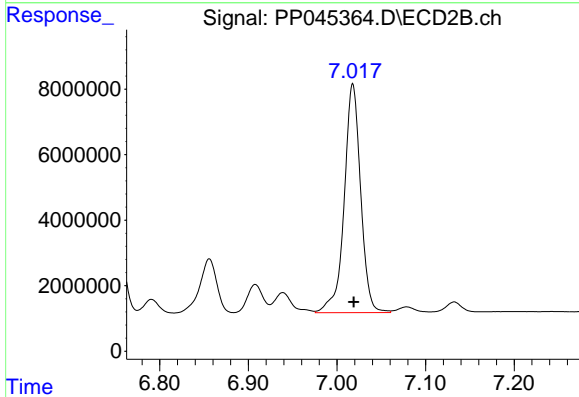
R.T.: 6.751 min  
 Delta R.T.: 0.000 min  
 Response: 39178505  
 Conc: 511.35 ng/ml



#35 AR-1260-5

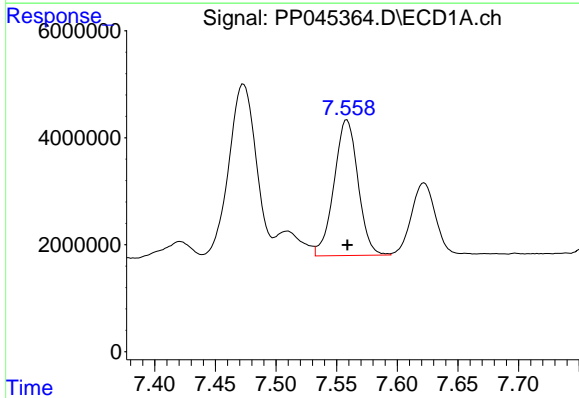
R.T.: 8.148 min  
 Delta R.T.: 0.000 min  
 Response: 74696930  
 Conc: 529.05 ng/ml

Instrument :  
 ECD\_P  
 ClientSampleId :  
 ICVPP033022



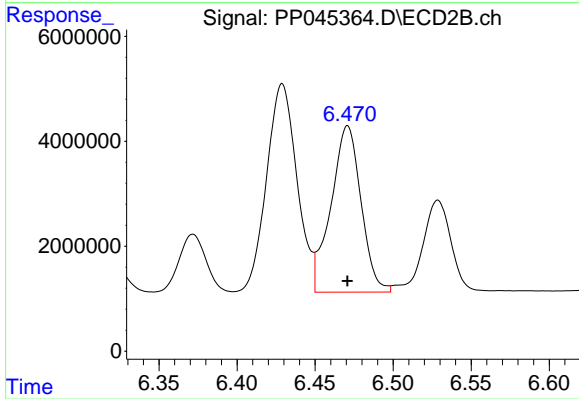
#35 AR-1260-5

R.T.: 7.018 min  
 Delta R.T.: -0.001 min  
 Response: 90239136  
 Conc: 510.13 ng/ml



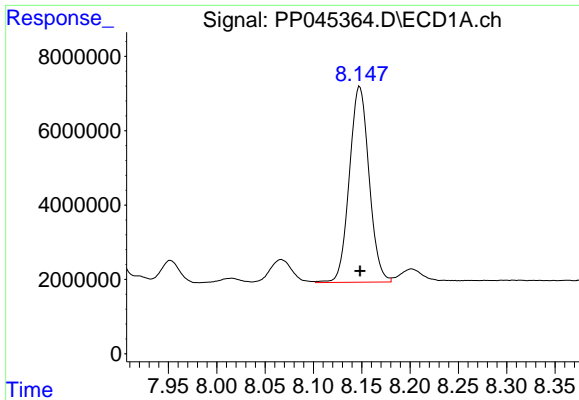
#36 AR-1262-1

R.T.: 7.558 min  
 Delta R.T.: 0.000 min  
 Response: 34998471  
 Conc: 347.00 ng/ml



#36 AR-1262-1

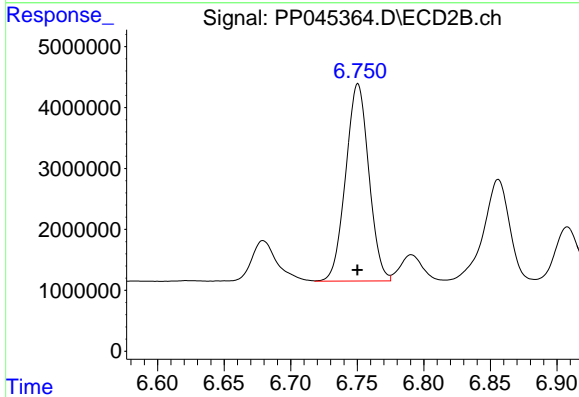
R.T.: 6.471 min  
 Delta R.T.: 0.000 min  
 Response: 42490408  
 Conc: 378.45 ng/ml



#37 AR-1262-2

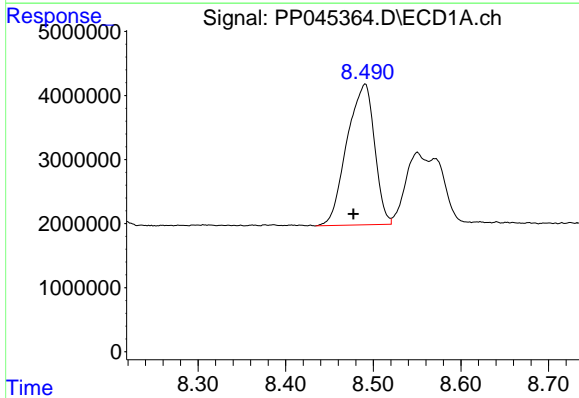
R.T.: 8.148 min  
 Delta R.T.: 0.000 min  
 Response: 74696930  
 Conc: 444.08 ng/ml

Instrument :  
 ECD\_P  
 ClientSampleId :  
 ICVPP033022



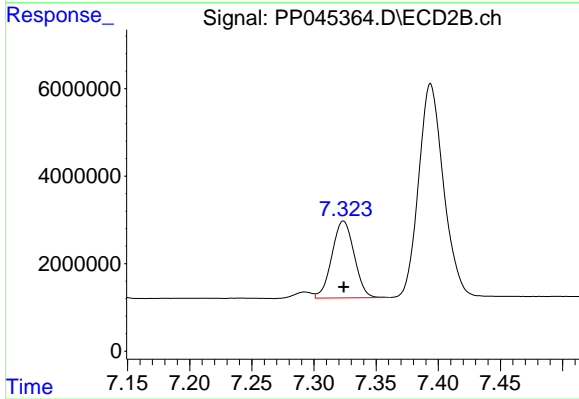
#37 AR-1262-2

R.T.: 6.751 min  
 Delta R.T.: 0.000 min  
 Response: 39178505  
 Conc: 387.87 ng/ml



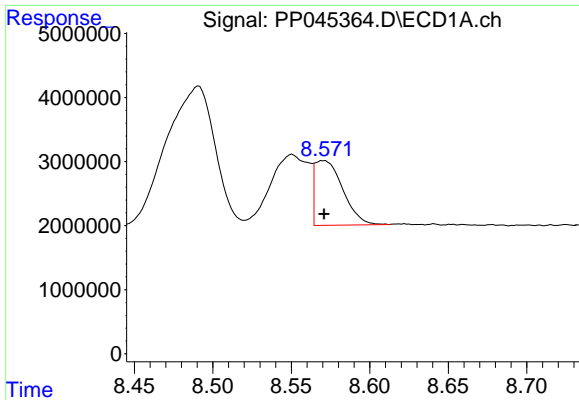
#38 AR-1262-3

R.T.: 8.491 min  
 Delta R.T.: 0.014 min  
 Response: 47977521  
 Conc: 415.16 ng/ml



#38 AR-1262-3

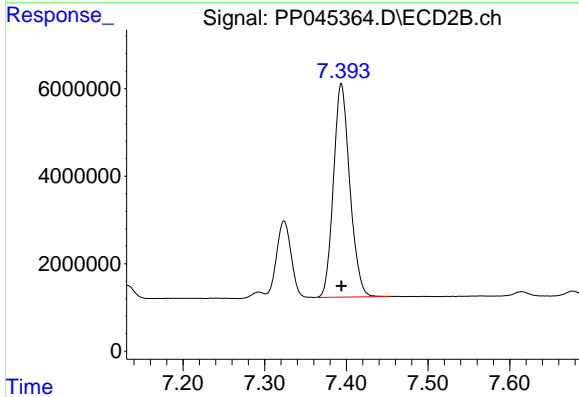
R.T.: 7.324 min  
 Delta R.T.: 0.000 min  
 Response: 21910449  
 Conc: 270.75 ng/ml



#39 AR-1262-4

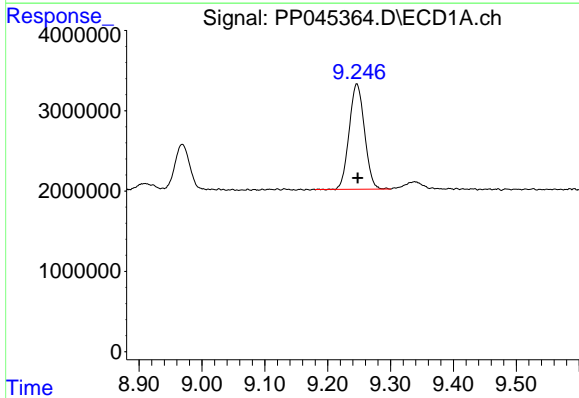
R.T.: 8.570 min  
 Delta R.T.: 0.000 min  
 Response: 12598909  
 Conc: 140.69 ng/ml

Instrument :  
 ECD\_P  
 ClientSampleId :  
 ICVPP033022



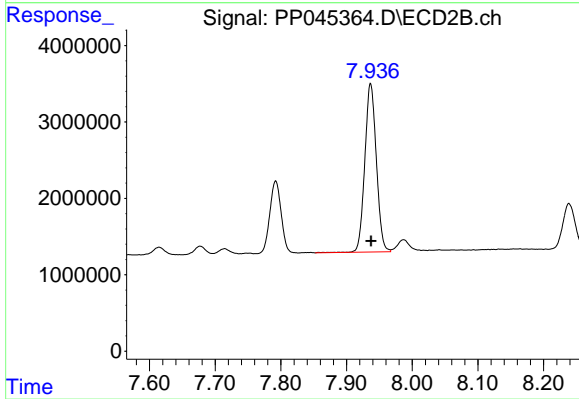
#39 AR-1262-4

R.T.: 7.394 min  
 Delta R.T.: 0.000 min  
 Response: 67841013  
 Conc: 458.61 ng/ml



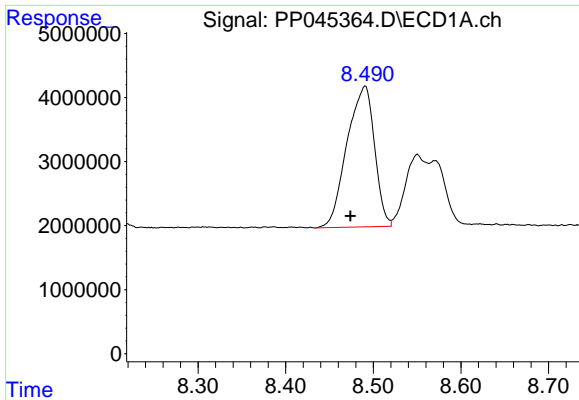
#40 AR-1262-5

R.T.: 9.247 min  
 Delta R.T.: -0.001 min  
 Response: 22229820  
 Conc: 363.70 ng/ml



#40 AR-1262-5

R.T.: 7.937 min  
 Delta R.T.: 0.000 min  
 Response: 26820334  
 Conc: 368.48 ng/ml

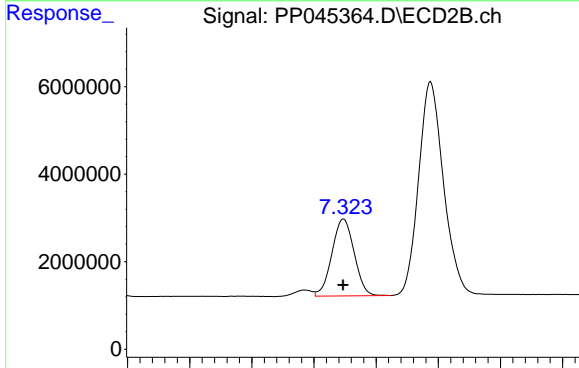


#41 AR-1268-1

R.T.: 8.491 min  
 Delta R.T.: 0.017 min  
 Response: 47977521  
 Conc: 237.44 ng/ml

Instrument :  
 ECD\_P  
 ClientSampleId :  
 ICVPP033022

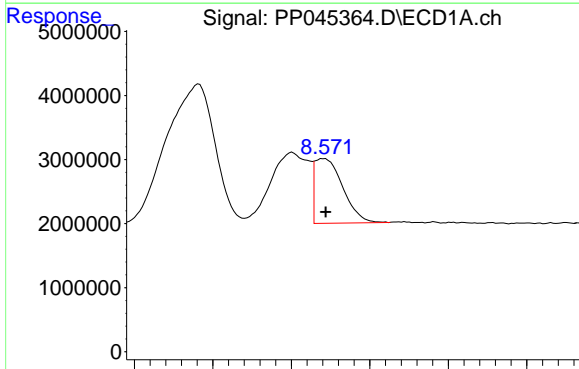
Time 8.30 8.40 8.50 8.60 8.70



#41 AR-1268-1

R.T.: 7.324 min  
 Delta R.T.: 0.000 min  
 Response: 21910449  
 Conc: 97.91 ng/ml

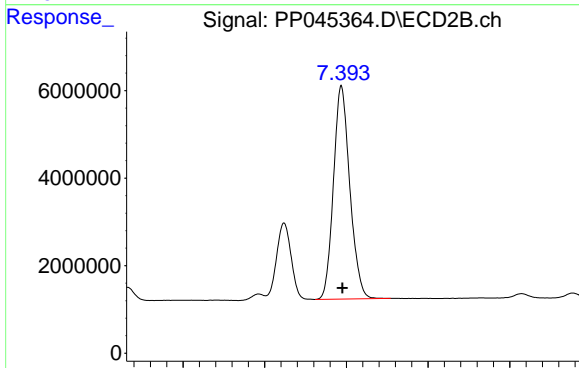
Time 7.15 7.20 7.25 7.30 7.35 7.40 7.45



#42 AR-1268-2

R.T.: 8.570 min  
 Delta R.T.: -0.002 min  
 Response: 12598909  
 Conc: 67.41 ng/ml

Time 8.45 8.50 8.55 8.60 8.65 8.70

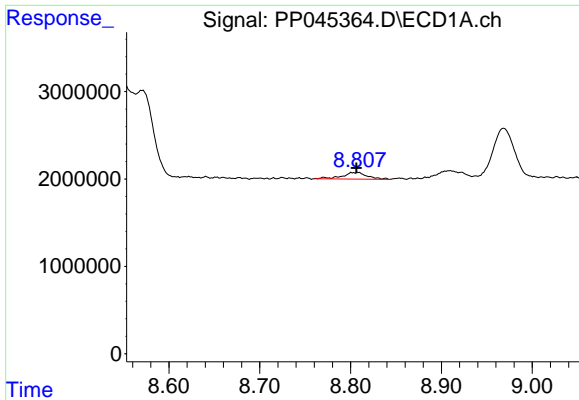


#42 AR-1268-2

R.T.: 7.394 min  
 Delta R.T.: -0.001 min  
 Response: 67841013  
 Conc: 335.04 ng/ml

Time 7.20 7.30 7.40 7.50 7.60

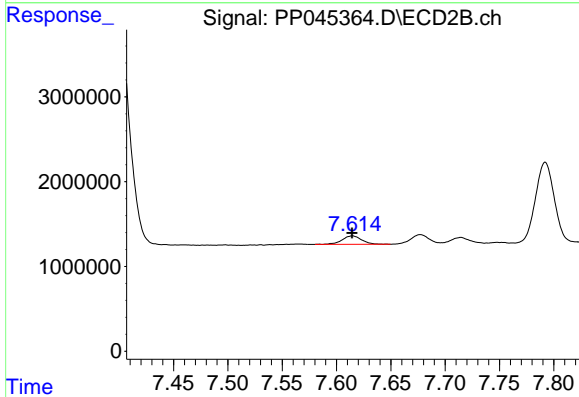




#43 AR-1268-3

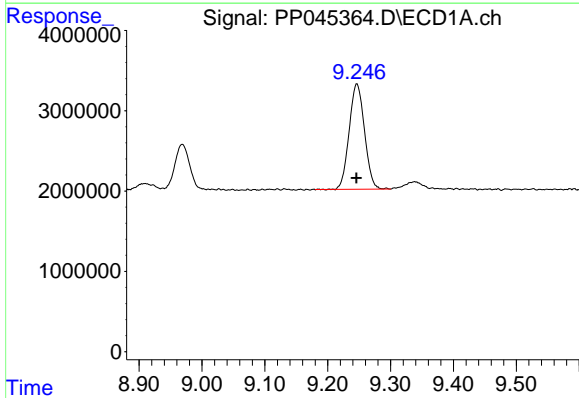
R.T.: 8.808 min  
 Delta R.T.: 0.001 min  
 Response: 1430678  
 Conc: 8.66 ng/ml

Instrument :  
 ECD\_P  
 ClientSampleId :  
 ICVPP033022



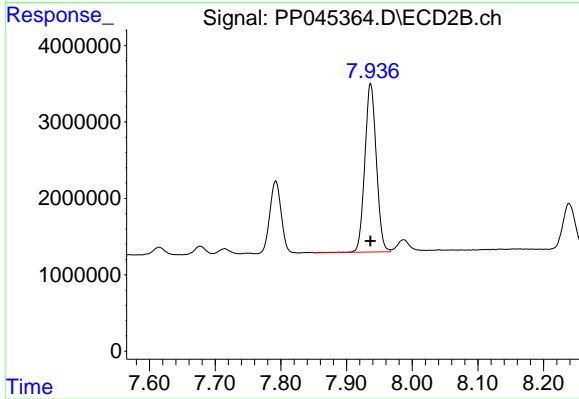
#43 AR-1268-3

R.T.: 7.615 min  
 Delta R.T.: 0.000 min  
 Response: 1245511  
 Conc: 7.28 ng/ml



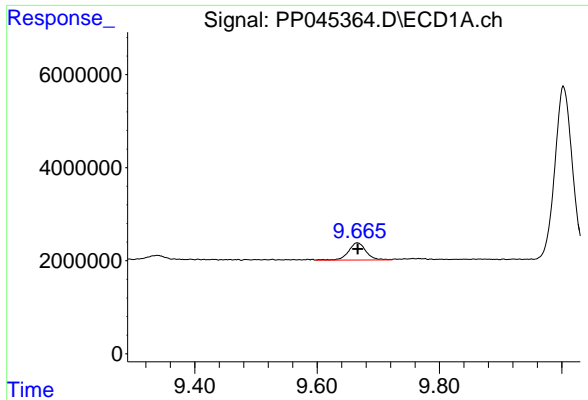
#44 AR-1268-4

R.T.: 9.247 min  
 Delta R.T.: 0.000 min  
 Response: 22229820  
 Conc: 332.06 ng/ml



#44 AR-1268-4

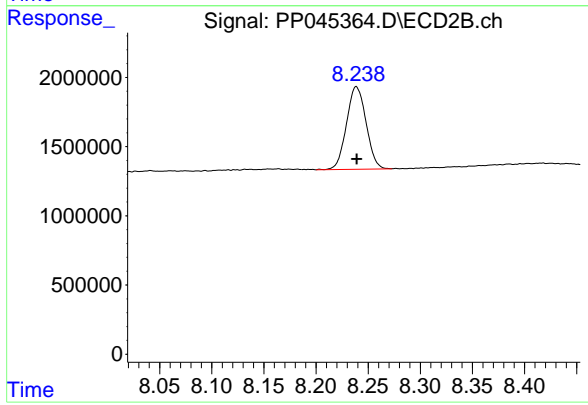
R.T.: 7.937 min  
 Delta R.T.: 0.000 min  
 Response: 26820334  
 Conc: 338.80 ng/ml



#45 AR-1268-5

R.T.: 9.666 min  
Delta R.T.: 0.000 min  
Response: 7324917  
Conc: 14.11 ng/ml

Instrument :  
ECD\_P  
ClientSampleId :  
ICVPP033022



#45 AR-1268-5

R.T.: 8.239 min  
Delta R.T.: 0.000 min  
Response: 7826434  
Conc: 14.61 ng/ml