

Data Path : Z:\pestpcbsrv\HPCHEM1\ECD\_P\Data\PP033121\  
 Data File : PP034494.D  
 Signal(s) : Signal #1: ECD1A.CH Signal #2: ECD2B.CH  
 Acq On : 31 Mar 2021 11:20  
 Operator : DD\AJ  
 Sample : M1858-05  
 Misc :  
 ALS Vial : 12 Sample Multiplier: 1

Instrument :  
 ECD\_P  
 ClientSampleId :  
 B1B

Integration File signal 1: autoint1.e  
 Integration File signal 2: autoint2.e  
 Quant Time: Mar 31 13:26:45 2021  
 Quant Method : Z:\pestpcbsrv\HPCHEM1\ECD\_P\methods\PP033021.M  
 Quant Title : GC EXTRACTABLES  
 QLast Update : Wed Mar 31 06:02:19 2021  
 Response via : Initial Calibration  
 Integrator: ChemStation 6890 Scale Mode: Small noise peaks clipped

Volume Inj. : 2 µl  
 Signal #1 Phase : ZB-MR1 Signal #2 Phase: ZB-MR2  
 Signal #1 Info : 30Mx0.32mmx 0.50µ Signal #2 Info : 30M x 0.32mm x 0.25µm

Compound	RT#1	RT#2	Resp#1	Resp#2	ng/ml	ng/ml
-----						
System Monitoring Compounds						
1) SA Tetrachlo...	4.845	4.257	1821985	1038594	23.884	23.120
2) SA Decachlor...	10.766	9.565	1767433	635701	22.960	22.514

Target Compounds

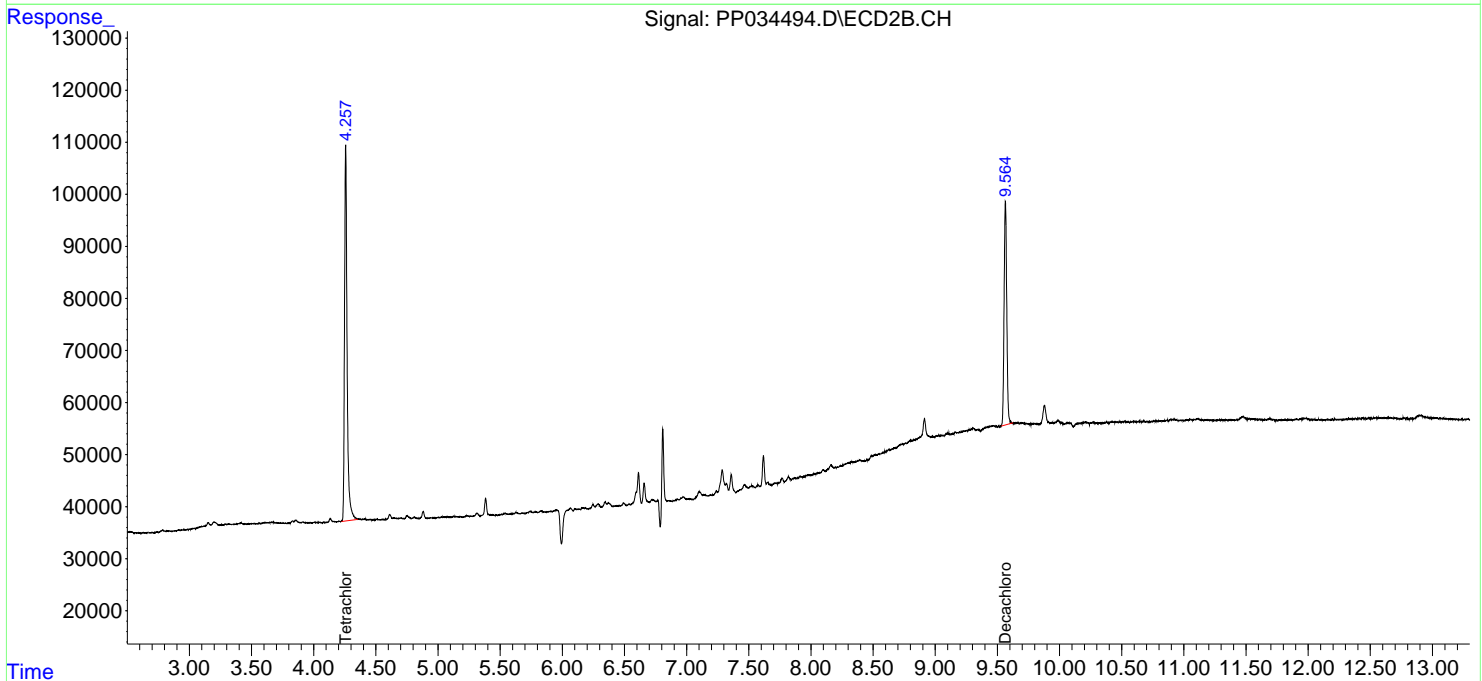
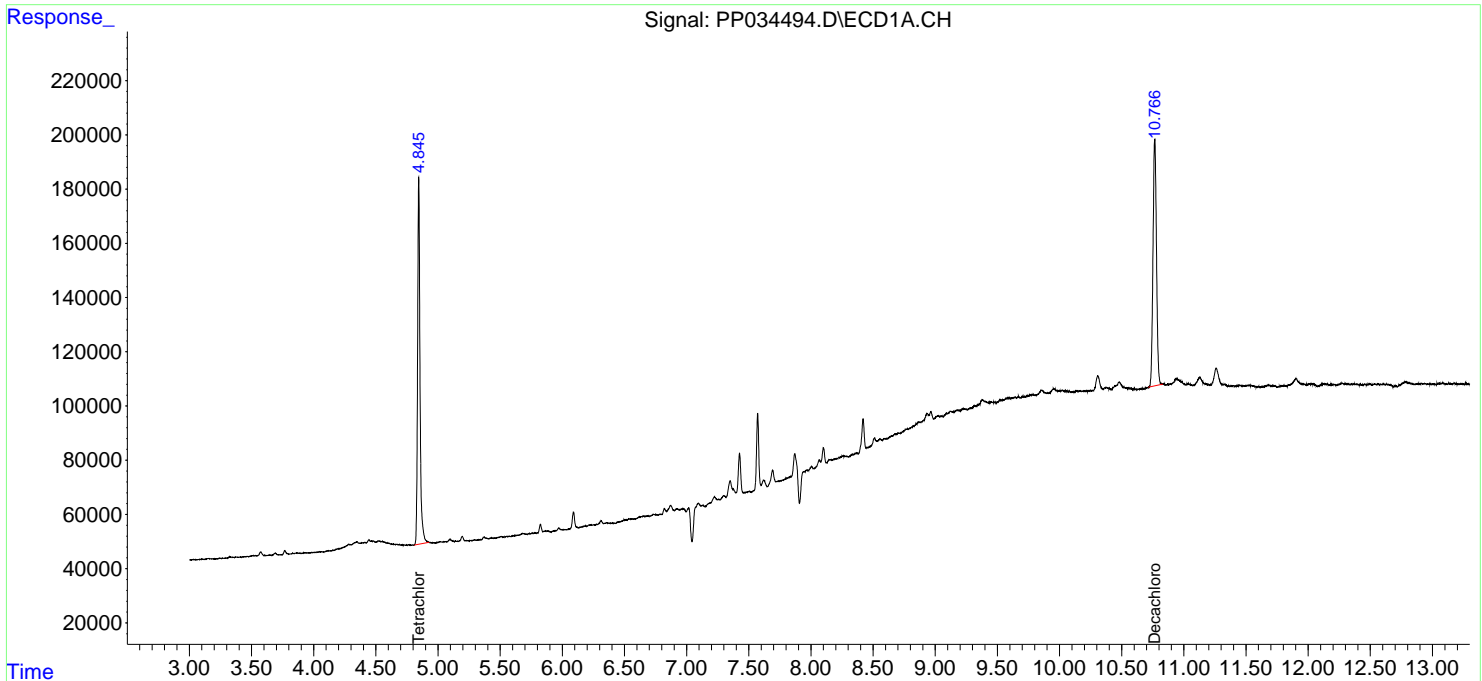
(f)=RT Delta > 1/2 Window (#)=Amounts differ by > 25% (m)=manual int.

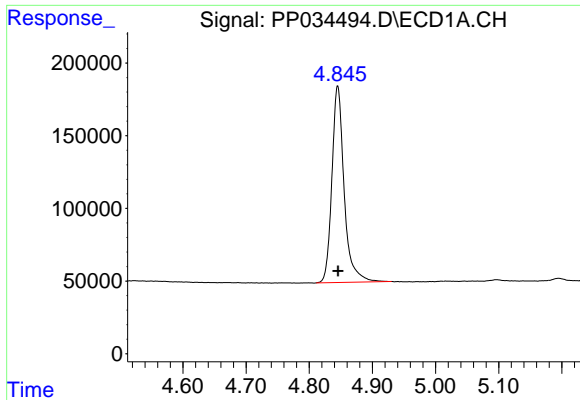
Data Path : Z:\pestpcbsrv\HPCHEM1\ECD\_P\Data\PP033121\  
 Data File : PP034494.D  
 Signal(s) : Signal #1: ECD1A.CH Signal #2: ECD2B.CH  
 Acq On : 31 Mar 2021 11:20  
 Operator : DD\AJ  
 Sample : M1858-05  
 Misc :  
 ALS Vial : 12 Sample Multiplier: 1

Instrument :  
 ECD\_P  
 ClientSampleId :  
 B1B

Integration File signal 1: autoint1.e  
 Integration File signal 2: autoint2.e  
 Quant Time: Mar 31 13:26:45 2021  
 Quant Method : Z:\pestpcbsrv\HPCHEM1\ECD\_P\methods\PP033021.M  
 Quant Title : GC EXTRACTABLES  
 QLast Update : Wed Mar 31 06:02:19 2021  
 Response via : Initial Calibration  
 Integrator: ChemStation 6890 Scale Mode: Small noise peaks clipped

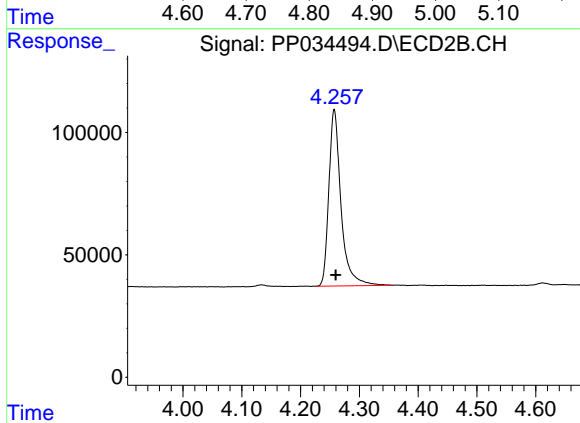
Volume Inj. : 2 µl  
 Signal #1 Phase : ZB-MR1 Signal #2 Phase: ZB-MR2  
 Signal #1 Info : 30Mx0.32mmx 0.50µ Signal #2 Info : 30M x 0.32mm x 0.25µm



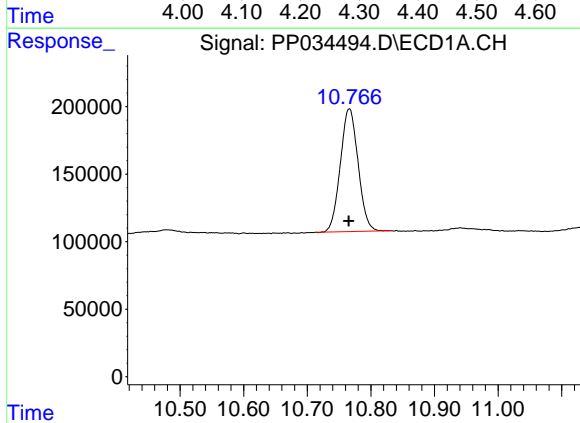


#1 Tetrachloro-m-xylene  
 R.T.: 4.845 min  
 Delta R.T.: 0.000 min  
 Response: 1821985  
 Conc: 23.88 ng/ml

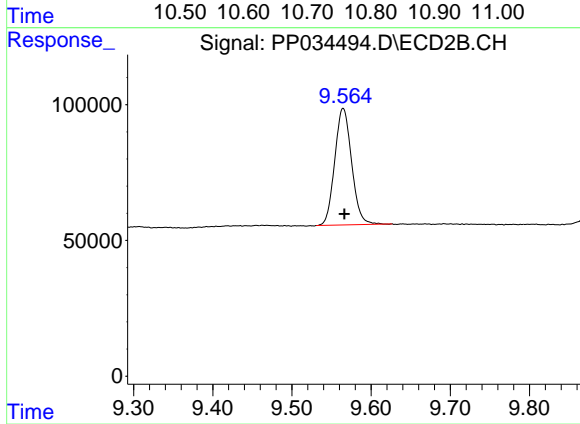
Instrument :  
 ECD\_P  
 ClientSampled :  
 B1B



#1 Tetrachloro-m-xylene  
 R.T.: 4.257 min  
 Delta R.T.: -0.002 min  
 Response: 1038594  
 Conc: 23.12 ng/ml



#2 Decachlorobiphenyl  
 R.T.: 10.766 min  
 Delta R.T.: 0.001 min  
 Response: 1767433  
 Conc: 22.96 ng/ml



#2 Decachlorobiphenyl  
 R.T.: 9.565 min  
 Delta R.T.: -0.001 min  
 Response: 635701  
 Conc: 22.51 ng/ml