

Data Path : Z:\pestpcbsrv\HPCHEM1\ECD\_P\Data\PP040325\  
 Data File : PP071083.D  
 Signal(s) : Signal #1: ECD1A.ch Signal #2: ECD2B.ch  
 Acq On : 03 Apr 2025 22:32  
 Operator : YP\AJ  
 Sample : AR1254CCC500  
 Misc :  
 ALS Vial : 6 Sample Multiplier: 1

**Instrument :**  
 ECD\_P  
**ClientSampleId :**  
 AR1254CCC500

Integration File signal 1: autoint1.e  
 Integration File signal 2: autoint2.e  
 Quant Time: Apr 04 01:56:57 2025  
 Quant Method : Z:\pestpcbsrv\HPCHEM1\ECD\_P\methods\PP032725.M  
 Quant Title : GC EXTRACTABLES  
 QLast Update : Fri Mar 28 03:13:46 2025  
 Response via : Initial Calibration  
 Integrator: ChemStation

Volume Inj. : 2 µl  
 Signal #1 Phase : ZB-MR1 Signal #2 Phase: ZB-MR2  
 Signal #1 Info : 30Mx0.32mmx 0.50µ Signal #2 Info : 30M x 0.32mm x 0.25µm

| Compound                    | RT#1   | RT#2  | Resp#1   | Resp#2   | ng/ml   | ng/ml   |
|-----------------------------|--------|-------|----------|----------|---------|---------|
| -----                       |        |       |          |          |         |         |
| System Monitoring Compounds |        |       |          |          |         |         |
| 1) SA Tetrachlo...          | 4.520  | 3.818 | 69734250 | 53072468 | 47.712  | 51.196  |
| 2) SA Decachlor...          | 10.242 | 8.858 | 51683902 | 35312479 | 49.100  | 44.802  |
| Target Compounds            |        |       |          |          |         |         |
| 26) L6 AR-1254-1            | 6.524  | 5.709 | 29415319 | 31757563 | 456.829 | 481.045 |
| 27) L6 AR-1254-2            | 6.740  | 5.857 | 47599014 | 26829890 | 470.855 | 469.891 |
| 28) L6 AR-1254-3            | 7.103  | 6.261 | 47407506 | 40459801 | 475.369 | 465.905 |
| 29) L6 AR-1254-4            | 7.385  | 6.489 | 44214064 | 26723077 | 510.574 | 476.343 |
| 30) L6 AR-1254-5            | 7.802  | 6.907 | 37876994 | 33998799 | 471.394 | 471.220 |
| -----                       |        |       |          |          |         |         |

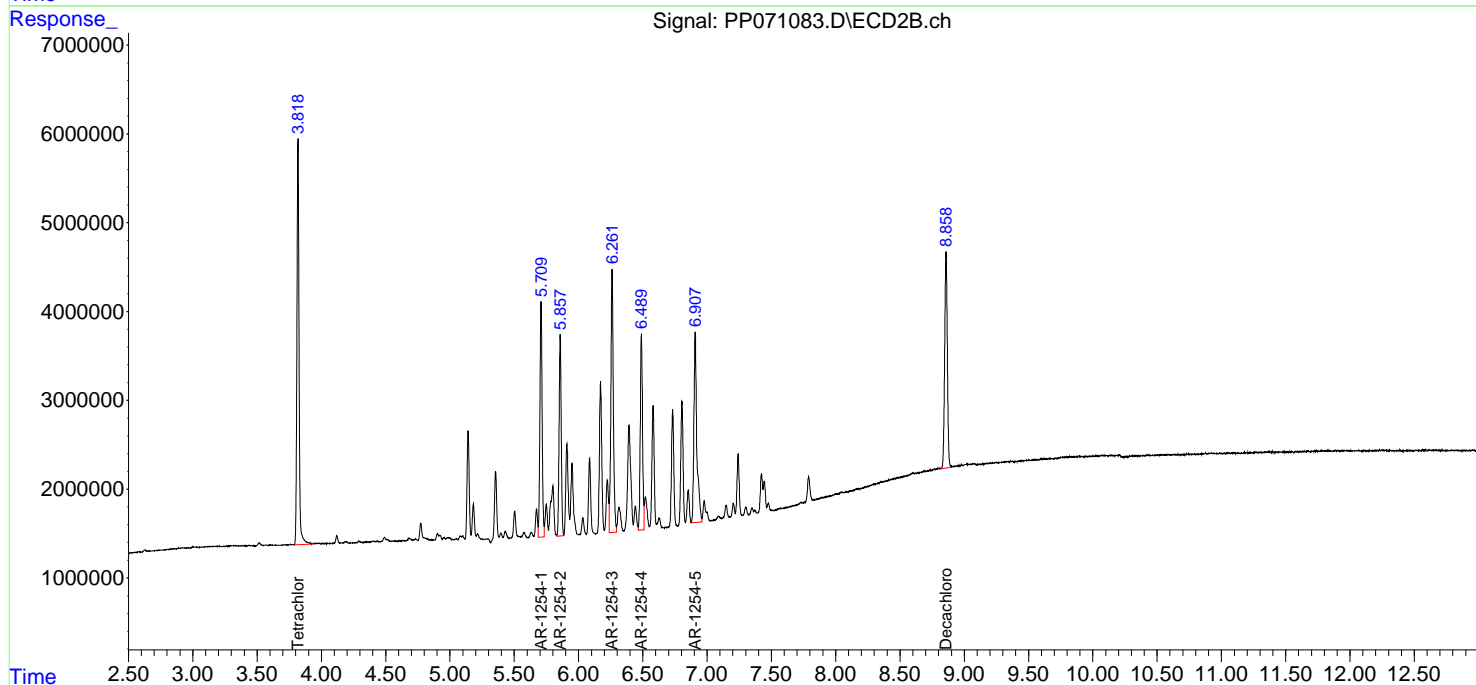
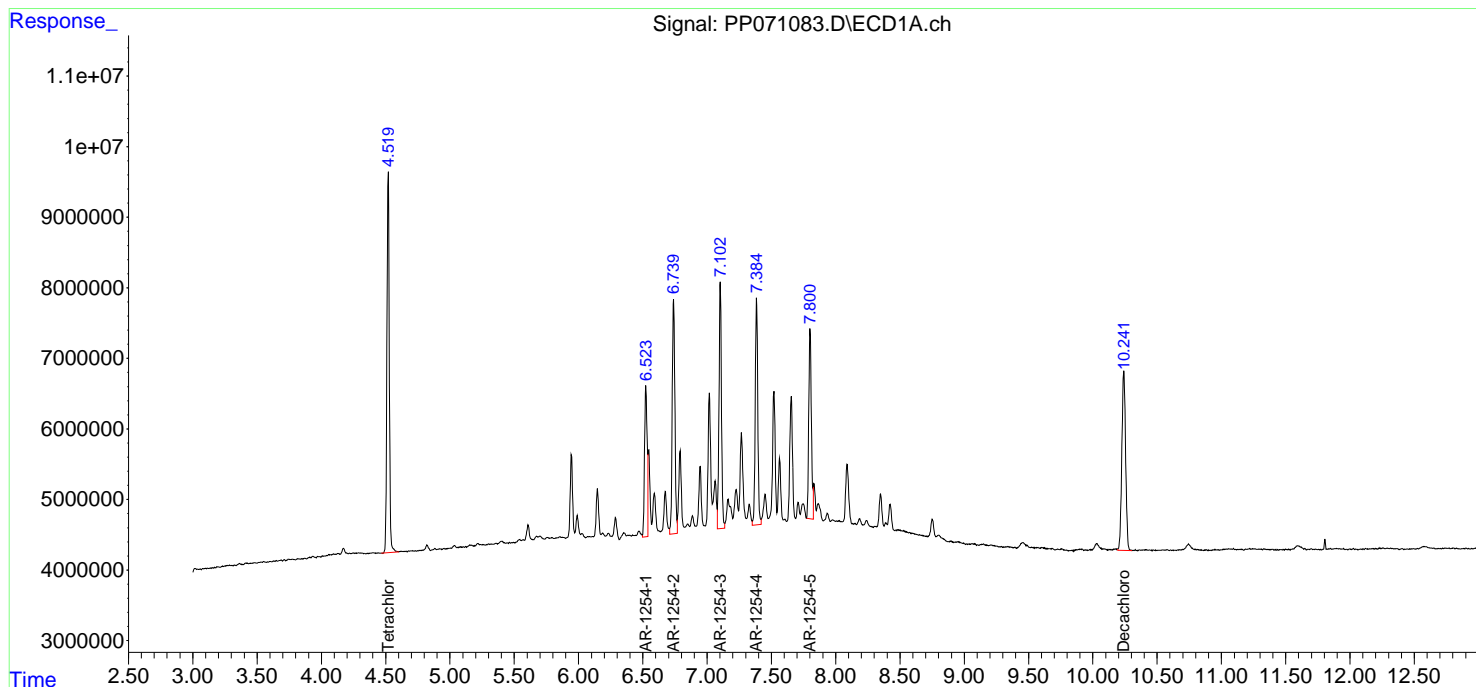
(f)=RT Delta > 1/2 Window (#)=Amounts differ by > 25% (m)=manual int.

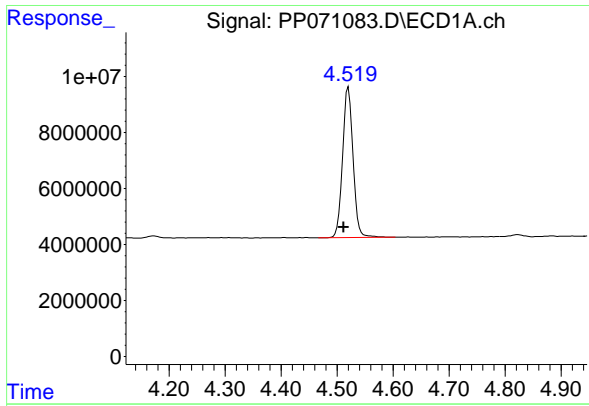
Data Path : Z:\pestpcbsrv\HPCHEM1\ECD\_P\Data\PP040325\  
 Data File : PP071083.D  
 Signal(s) : Signal #1: ECD1A.ch Signal #2: ECD2B.ch  
 Acq On : 03 Apr 2025 22:32  
 Operator : YP\AJ  
 Sample : AR1254CCC500  
 Misc :  
 ALS Vial : 6 Sample Multiplier: 1

Instrument :  
 ECD\_P  
 ClientSampleId :  
 AR1254CCC500

Integration File signal 1: autoint1.e  
 Integration File signal 2: autoint2.e  
 Quant Time: Apr 04 01:56:57 2025  
 Quant Method : Z:\pestpcbsrv\HPCHEM1\ECD\_P\methods\PP032725.M  
 Quant Title : GC EXTRACTABLES  
 QLast Update : Fri Mar 28 03:13:46 2025  
 Response via : Initial Calibration  
 Integrator: ChemStation

Volume Inj. : 2 µl  
 Signal #1 Phase : ZB-MR1 Signal #2 Phase: ZB-MR2  
 Signal #1 Info : 30Mx0.32mmx 0.50µ Signal #2 Info : 30M x 0.32mm x 0.25µm

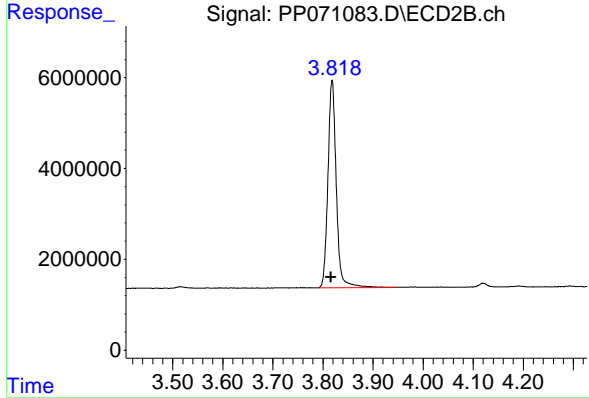




#1 Tetrachloro-m-xylene

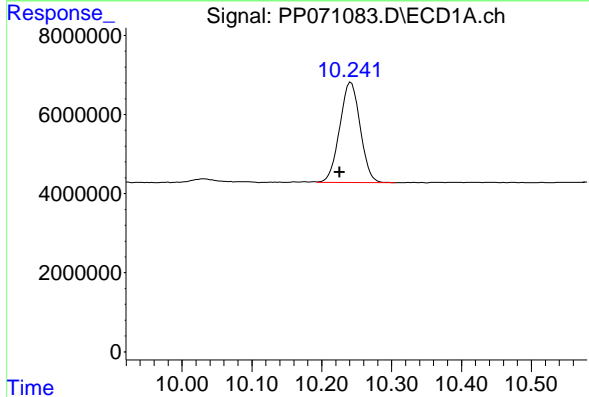
R.T.: 4.520 min  
 Delta R.T.: 0.008 min  
 Response: 69734250  
 Conc: 47.71 ng/ml

Instrument :  
 ECD\_P  
 ClientSampleId :  
 AR1254CCC500



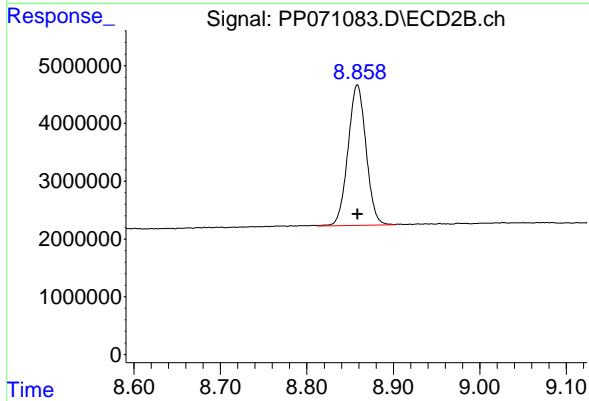
#1 Tetrachloro-m-xylene

R.T.: 3.818 min  
 Delta R.T.: 0.002 min  
 Response: 53072468  
 Conc: 51.20 ng/ml



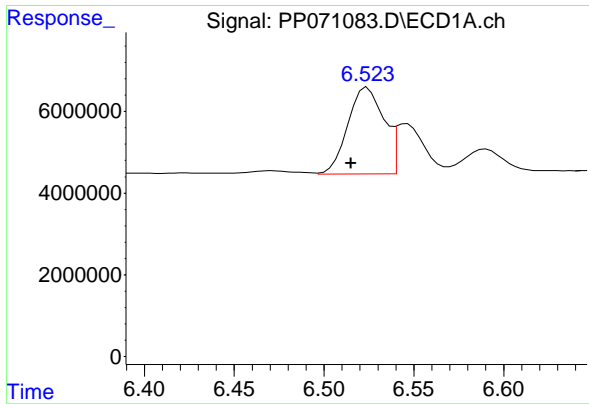
#2 Decachlorobiphenyl

R.T.: 10.242 min  
 Delta R.T.: 0.017 min  
 Response: 51683902  
 Conc: 49.10 ng/ml



#2 Decachlorobiphenyl

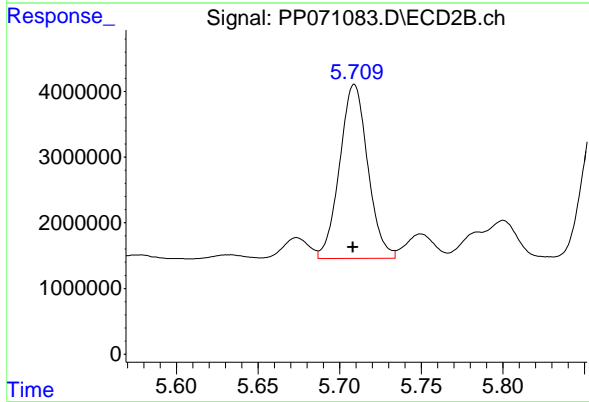
R.T.: 8.858 min  
 Delta R.T.: 0.000 min  
 Response: 35312479  
 Conc: 44.80 ng/ml



#26 AR-1254-1

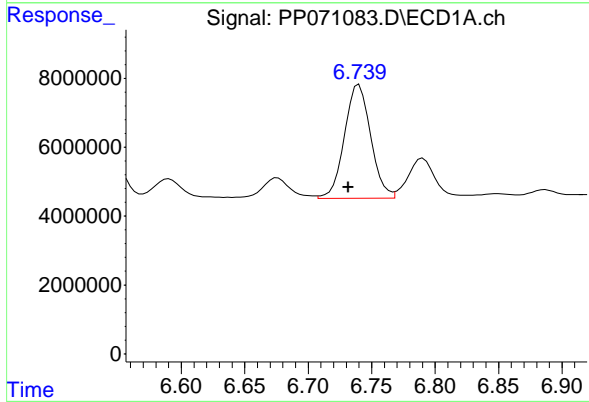
R.T.: 6.524 min  
 Delta R.T.: 0.009 min  
 Response: 29415319  
 Conc: 456.83 ng/ml

Instrument :  
 ECD\_P  
 ClientSampleId :  
 AR1254CCC500



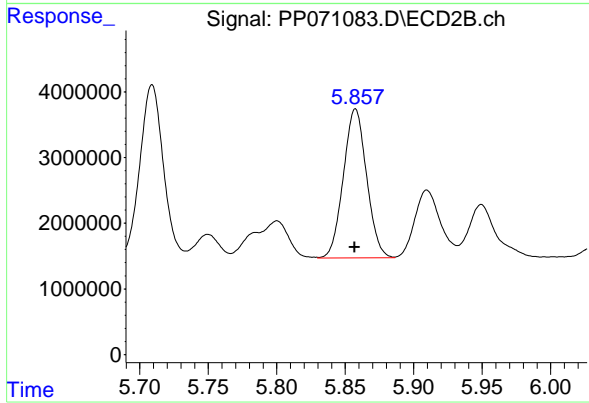
#26 AR-1254-1

R.T.: 5.709 min  
 Delta R.T.: 0.000 min  
 Response: 31757563  
 Conc: 481.05 ng/ml



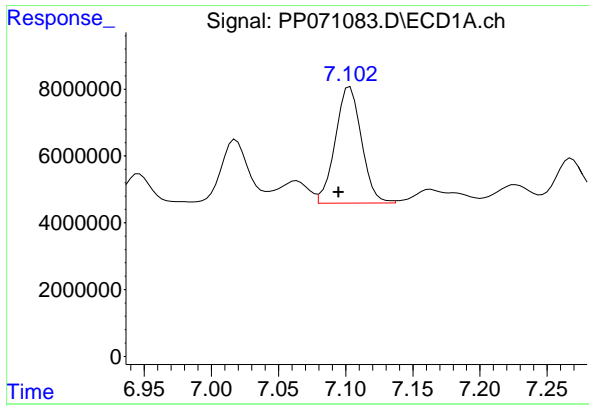
#27 AR-1254-2

R.T.: 6.740 min  
 Delta R.T.: 0.008 min  
 Response: 47599014  
 Conc: 470.86 ng/ml



#27 AR-1254-2

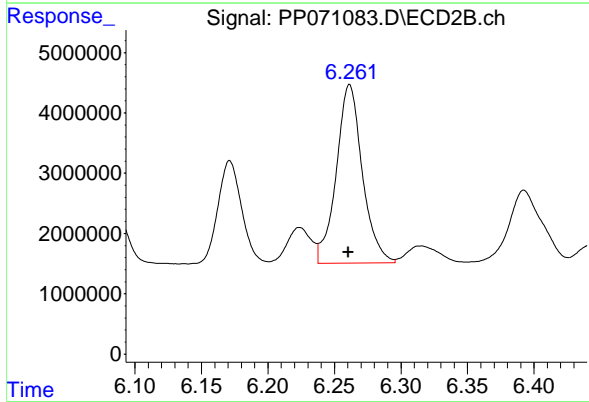
R.T.: 5.857 min  
 Delta R.T.: 0.000 min  
 Response: 26829890  
 Conc: 469.89 ng/ml



#28 AR-1254-3

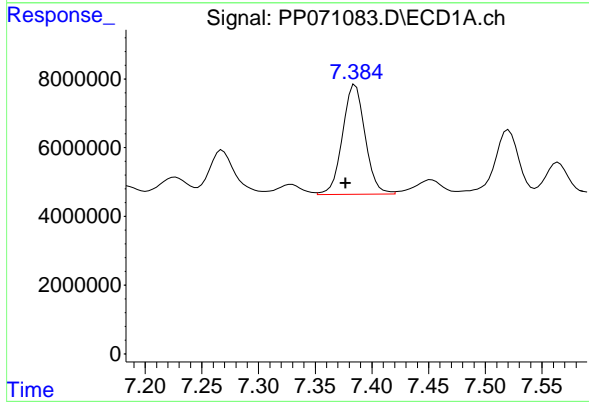
R.T.: 7.103 min  
 Delta R.T.: 0.009 min  
 Response: 47407506  
 Conc: 475.37 ng/ml

Instrument :  
 ECD\_P  
 ClientSampleId :  
 AR1254CCC500



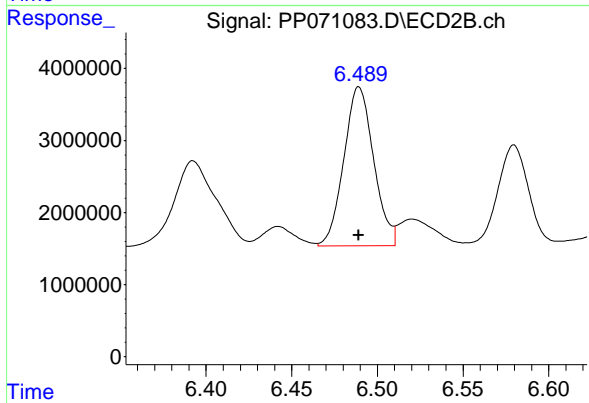
#28 AR-1254-3

R.T.: 6.261 min  
 Delta R.T.: 0.001 min  
 Response: 40459801  
 Conc: 465.90 ng/ml



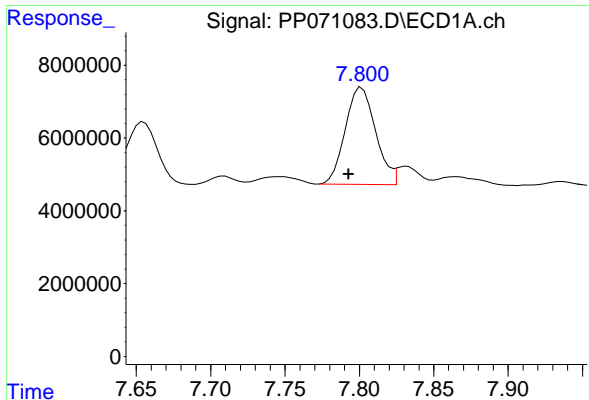
#29 AR-1254-4

R.T.: 7.385 min  
 Delta R.T.: 0.008 min  
 Response: 44214064  
 Conc: 510.57 ng/ml



#29 AR-1254-4

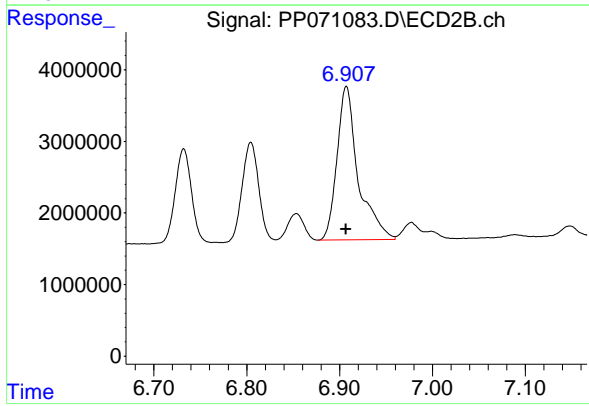
R.T.: 6.489 min  
 Delta R.T.: 0.000 min  
 Response: 26723077  
 Conc: 476.34 ng/ml



#30 AR-1254-5

R.T.: 7.802 min  
Delta R.T.: 0.009 min  
Response: 37876994  
Conc: 471.39 ng/ml

Instrument :  
ECD\_P  
ClientSampleId :  
AR1254CCC500



#30 AR-1254-5

R.T.: 6.907 min  
Delta R.T.: 0.000 min  
Response: 33998799  
Conc: 471.22 ng/ml