

Data Path : Z:\pestpcbsrv\HPCHEM1\ECD_P\Data\PP040423\
 Data File : PP056638.D
 Signal(s) : Signal #1: ECD1A.ch Signal #2: ECD2B.ch
 Acq On : 04 Apr 2023 14:11
 Operator : YP\AJ
 Sample : PB151882BS
 Misc :
 ALS Vial : 8 Sample Multiplier: 1

Instrument :
 ECD_P
ClientSampleId :
 PB151882BS

Manual Integrations
APPROVED

Reviewed By :Yogesh Patel 04/05/2023
 Supervised By :Ankita Jodhani 04/05/2023

Integration File signal 1: autoint1.e
 Integration File signal 2: autoint2.e
 Quant Time: Apr 04 17:12:12 2023
 Quant Method : Z:\pestpcbsrv\HPCHEM1\ECD_P\methods\PP040323.M
 Quant Title : GC EXTRACTABLES
 QLast Update : Tue Apr 04 03:37:03 2023
 Response via : Initial Calibration
 Integrator: ChemStation

Volume Inj. : 2 µl
 Signal #1 Phase : ZB-MR1 Signal #2 Phase: ZB-MR2
 Signal #1 Info : 30Mx0.32mmx 0.50µ Signal #2 Info : 30M x 0.32mm x 0.25µm

Compound	RT#1	RT#2	Resp#1	Resp#2	ng/ml	ng/ml

System Monitoring Compounds						
1) SA Tetrachlo...	4.436	3.663	38935744	31216358	19.675	19.372m
2) SA Decachlor...	10.275	8.755	20275431	26418671	21.123	21.681
Target Compounds						
3) L1 AR-1016-1	5.611	4.766	23892501	19580931	436.836	431.899
4) L1 AR-1016-2	5.634	4.785	35999232	27729435	447.713	438.915
5) L1 AR-1016-3	5.697	4.965	22601801	15074340	445.103	437.994
6) L1 AR-1016-4	5.796	5.006	17672584	13901313	442.430	450.236
7) L1 AR-1016-5	6.093	5.223	18206417	17038665	441.670	434.704
31) L7 AR-1260-1	7.227	6.270	30557594	34353043	441.086	427.511
32) L7 AR-1260-2	7.486	6.458	32479241	36892035	440.524	427.767
33) L7 AR-1260-3	7.847	6.615	22005316	35876763	376.773	423.155
34) L7 AR-1260-4	8.074	7.092	26117198	26363925	423.480	384.112
35) L7 AR-1260-5	8.401	7.333	43294471	51288843	397.835	389.486

(f)=RT Delta > 1/2 Window (#)=Amounts differ by > 25% (m)=manual int.

Data Path : Z:\pestpcbsrv\HPCHEM1\ECD_P\Data\PP040423\
 Data File : PP056638.D
 Signal(s) : Signal #1: ECD1A.ch Signal #2: ECD2B.ch
 Acq On : 04 Apr 2023 14:11
 Operator : YP\AJ
 Sample : PB151882BS
 Misc :
 ALS Vial : 8 Sample Multiplier: 1

Instrument :

ECD_P

ClientSampleId :

PB151882BS

Manual Integrations

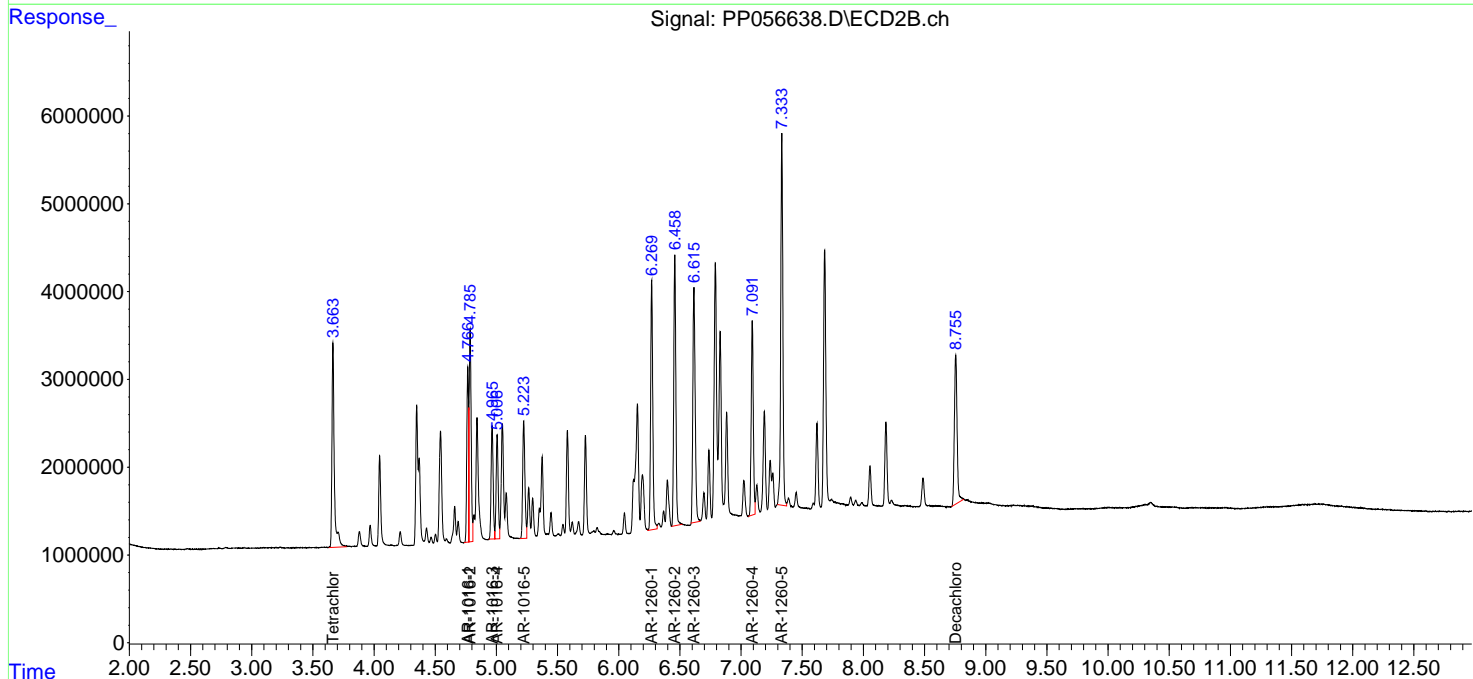
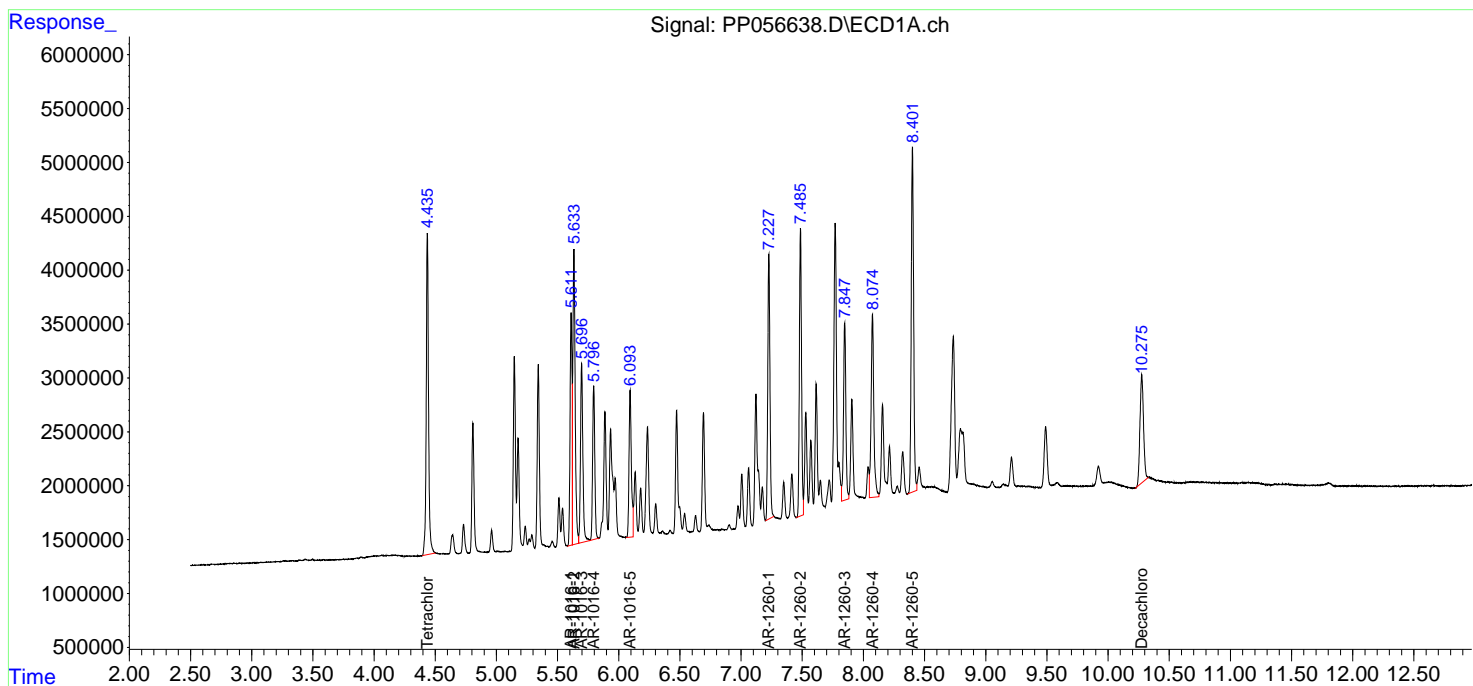
APPROVED

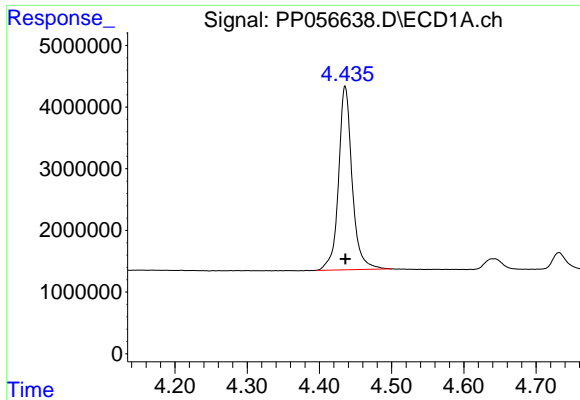
Reviewed By :Yogesh Patel 04/05/2023

Supervised By :Ankita Jodhani 04/05/2023

Integration File signal 1: autoint1.e
 Integration File signal 2: autoint2.e
 Quant Time: Apr 04 17:12:12 2023
 Quant Method : Z:\pestpcbsrv\HPCHEM1\ECD_P\methods\PP040323.M
 Quant Title : GC EXTRACTABLES
 QLast Update : Tue Apr 04 03:37:03 2023
 Response via : Initial Calibration
 Integrator: ChemStation

Volume Inj. : 2 µl
 Signal #1 Phase : ZB-MR1 Signal #2 Phase: ZB-MR2
 Signal #1 Info : 30Mx0.32mmx 0.50µ Signal #2 Info : 30M x 0.32mm x 0.25µm



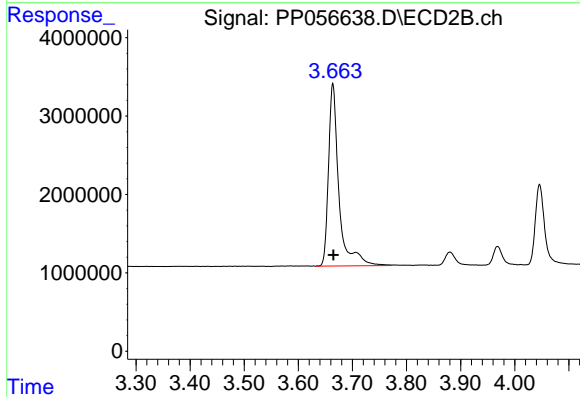


#1 Tetrachloro-m-xylene
 R.T.: 4.436 min
 Delta R.T.: 0.000 min
 Response: 38935744
 Conc: 19.67 ng/ml

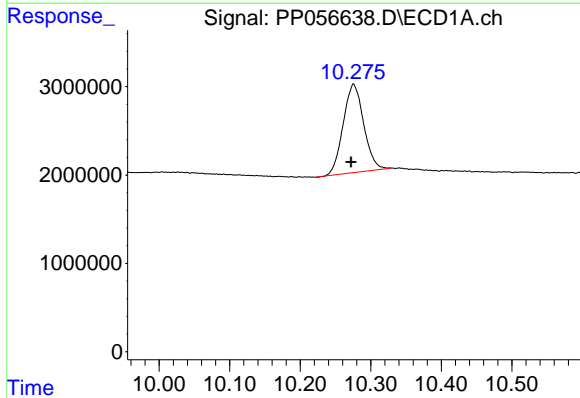
Instrument :
 ECD_P
 ClientSampleId :
 PB151882BS

Manual Integrations
 APPROVED

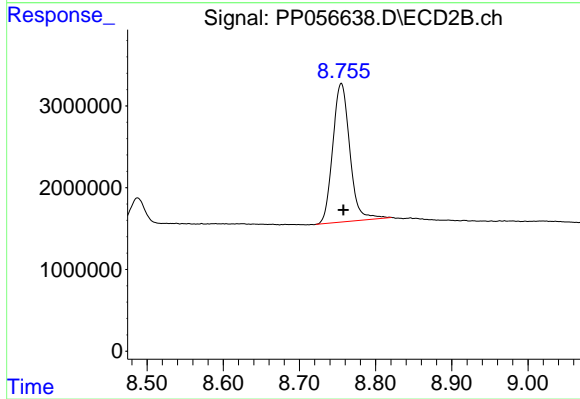
Reviewed By :Yogesh Patel 04/05/2023
 Supervised By :Ankita Jodhani 04/05/2023



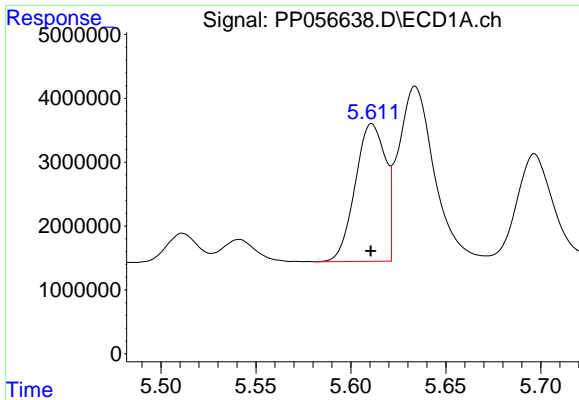
#1 Tetrachloro-m-xylene
 R.T.: 3.663 min
 Delta R.T.: -0.002 min
 Response: 31216358
 Conc: 19.37 ng/ml m



#2 Decachlorobiphenyl
 R.T.: 10.275 min
 Delta R.T.: 0.004 min
 Response: 20275431
 Conc: 21.12 ng/ml



#2 Decachlorobiphenyl
 R.T.: 8.755 min
 Delta R.T.: -0.003 min
 Response: 26418671
 Conc: 21.68 ng/ml



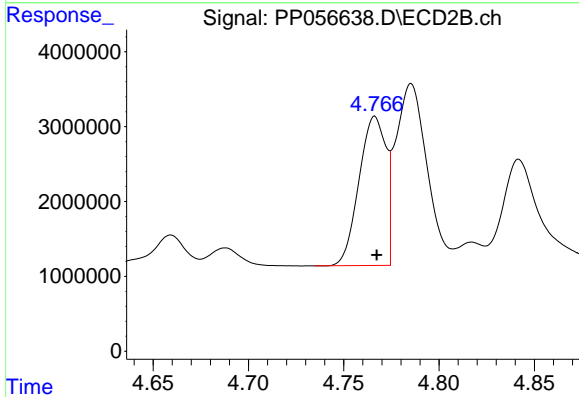
#3 AR-1016-1

R.T.: 5.611 min
 Delta R.T.: 0.000 min
 Response: 23892501
 Conc: 436.84 ng/ml

Instrument : ECD_P
 ClientSampleId : PB151882BS

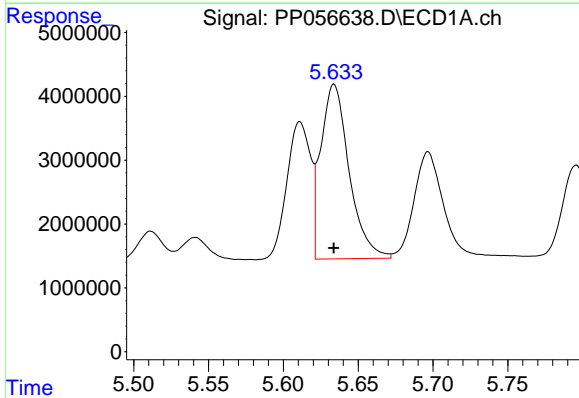
Manual Integrations
 APPROVED

Reviewed By :Yogesh Patel 04/05/2023
 Supervised By :Ankita Jodhani 04/05/2023



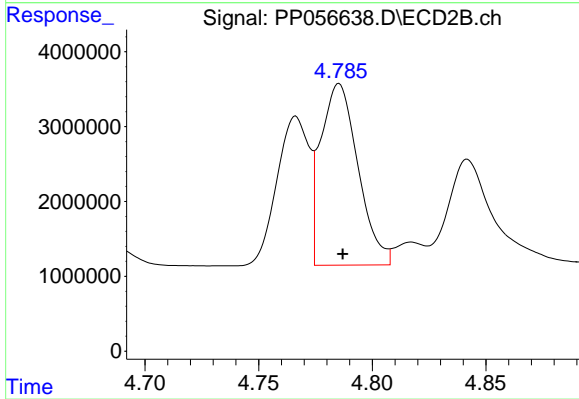
#3 AR-1016-1

R.T.: 4.766 min
 Delta R.T.: -0.001 min
 Response: 19580931
 Conc: 431.90 ng/ml



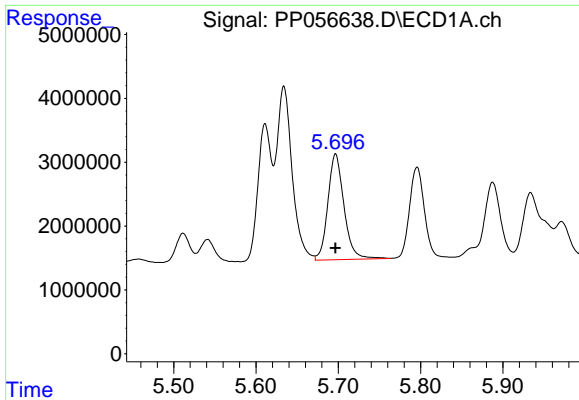
#4 AR-1016-2

R.T.: 5.634 min
 Delta R.T.: 0.000 min
 Response: 35999232
 Conc: 447.71 ng/ml



#4 AR-1016-2

R.T.: 4.785 min
 Delta R.T.: -0.002 min
 Response: 27729435
 Conc: 438.92 ng/ml



#5 AR-1016-3

R.T.: 5.697 min
 Delta R.T.: 0.000 min
 Response: 22601801
 Conc: 445.10 ng/ml

Instrument :

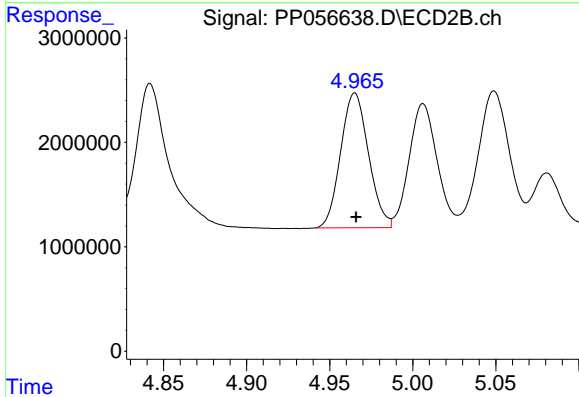
ECD_P

ClientSampleId :

PB151882BS

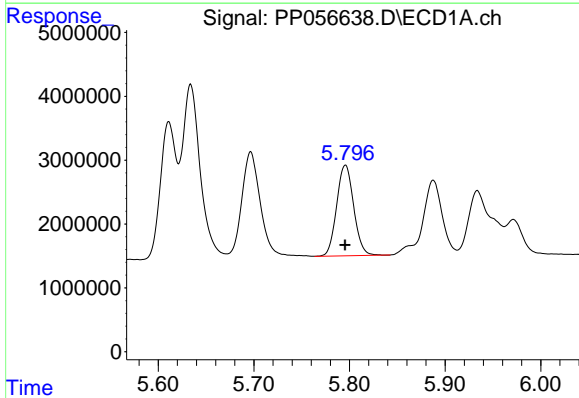
Manual Integrations
 APPROVED

Reviewed By :Yogesh Patel 04/05/2023
 Supervised By :Ankita Jodhani 04/05/2023



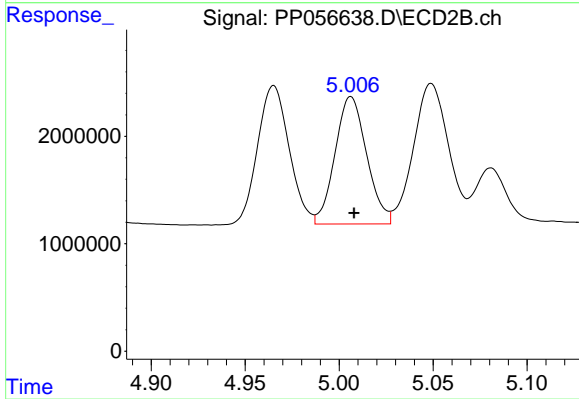
#5 AR-1016-3

R.T.: 4.965 min
 Delta R.T.: 0.000 min
 Response: 15074340
 Conc: 437.99 ng/ml



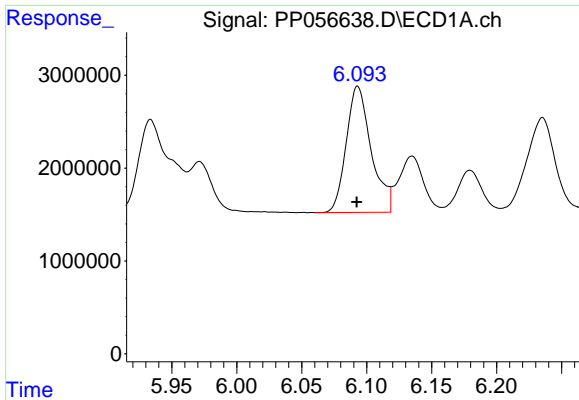
#6 AR-1016-4

R.T.: 5.796 min
 Delta R.T.: 0.000 min
 Response: 17672584
 Conc: 442.43 ng/ml



#6 AR-1016-4

R.T.: 5.006 min
 Delta R.T.: -0.002 min
 Response: 13901313
 Conc: 450.24 ng/ml



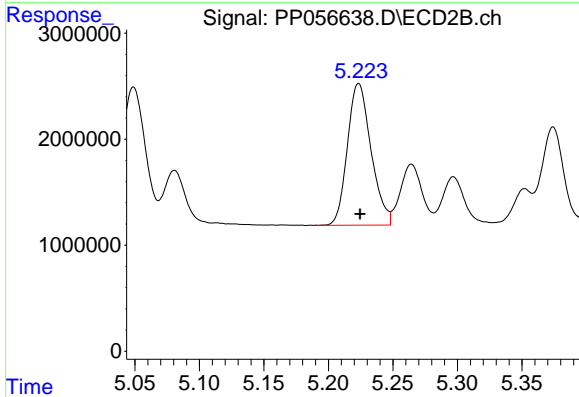
#7 AR-1016-5

R.T.: 6.093 min
 Delta R.T.: 0.000 min
 Response: 18206417
 Conc: 441.67 ng/ml

Instrument :
 ECD_P
 ClientSampleId :
 PB151882BS

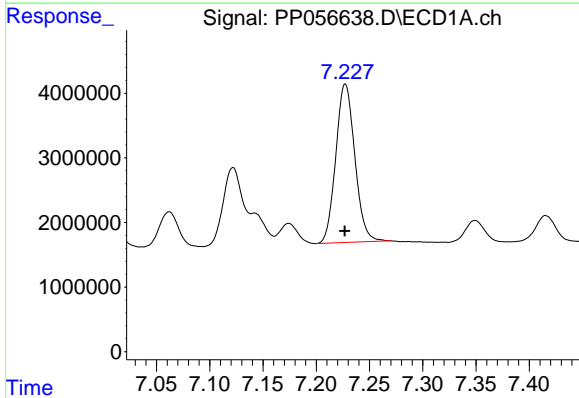
Manual Integrations
 APPROVED

Reviewed By :Yogesh Patel 04/05/2023
 Supervised By :Ankita Jodhani 04/05/2023



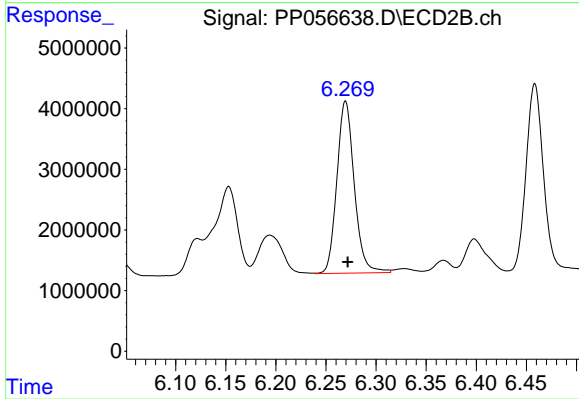
#7 AR-1016-5

R.T.: 5.223 min
 Delta R.T.: -0.001 min
 Response: 17038665
 Conc: 434.70 ng/ml



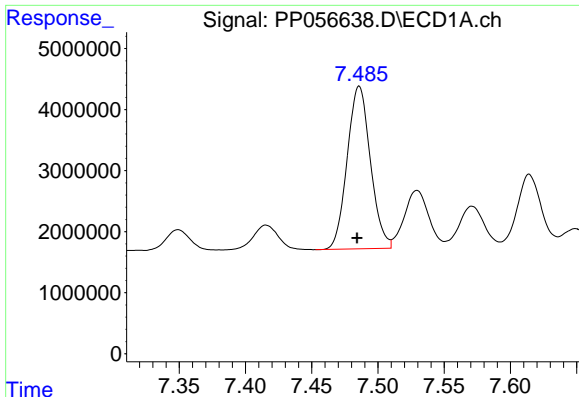
#31 AR-1260-1

R.T.: 7.227 min
 Delta R.T.: 0.000 min
 Response: 30557594
 Conc: 441.09 ng/ml



#31 AR-1260-1

R.T.: 6.270 min
 Delta R.T.: -0.002 min
 Response: 34353043
 Conc: 427.51 ng/ml



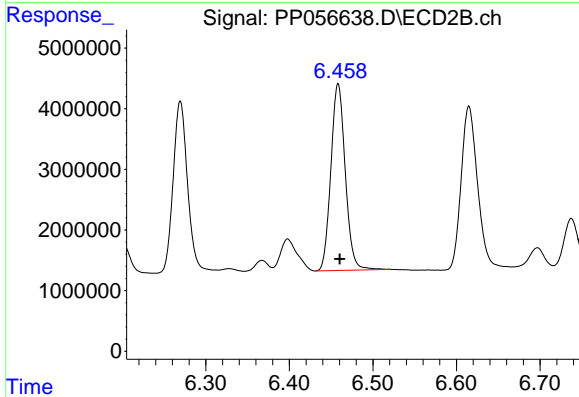
#32 AR-1260-2

R.T.: 7.486 min
 Delta R.T.: 0.002 min
 Response: 32479241
 Conc: 440.52 ng/ml

Instrument :
 ECD_P
 ClientSampleId :
 PB151882BS

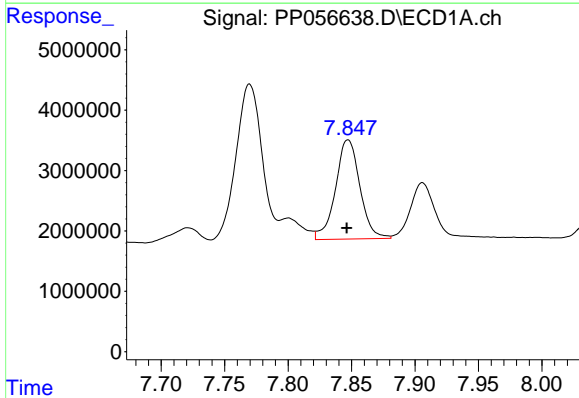
Manual Integrations
 APPROVED

Reviewed By :Yogesh Patel 04/05/2023
 Supervised By :Ankita Jodhani 04/05/2023



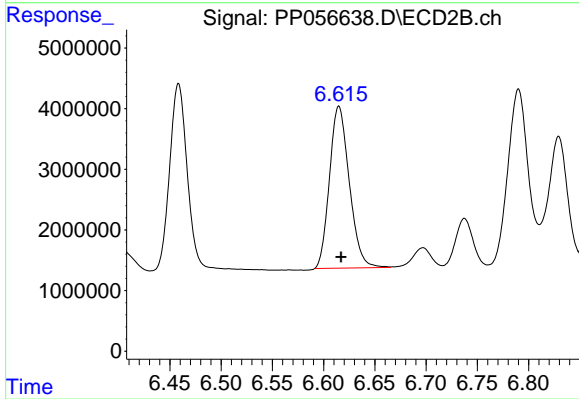
#32 AR-1260-2

R.T.: 6.458 min
 Delta R.T.: -0.002 min
 Response: 36892035
 Conc: 427.77 ng/ml



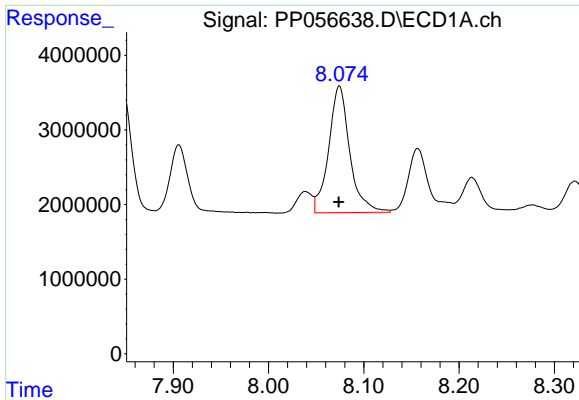
#33 AR-1260-3

R.T.: 7.847 min
 Delta R.T.: 0.000 min
 Response: 22005316
 Conc: 376.77 ng/ml



#33 AR-1260-3

R.T.: 6.615 min
 Delta R.T.: -0.002 min
 Response: 35876763
 Conc: 423.16 ng/ml



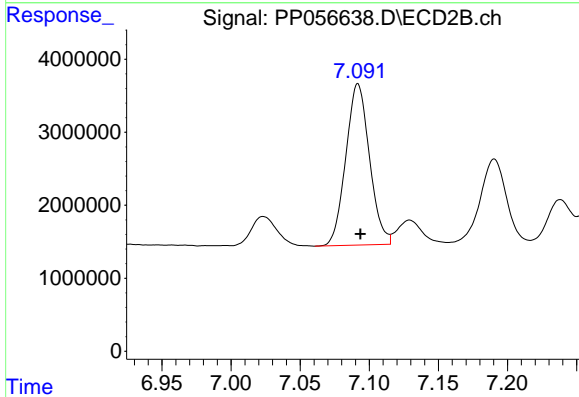
#34 AR-1260-4

R.T.: 8.074 min
 Delta R.T.: 0.000 min
 Response: 26117198
 Conc: 423.48 ng/ml

Instrument :
 ECD_P
 ClientSampleId :
 PB151882BS

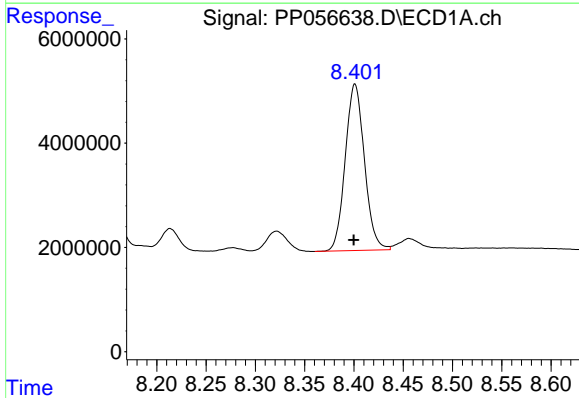
Manual Integrations
 APPROVED

Reviewed By :Yogesh Patel 04/05/2023
 Supervised By :Ankita Jodhani 04/05/2023



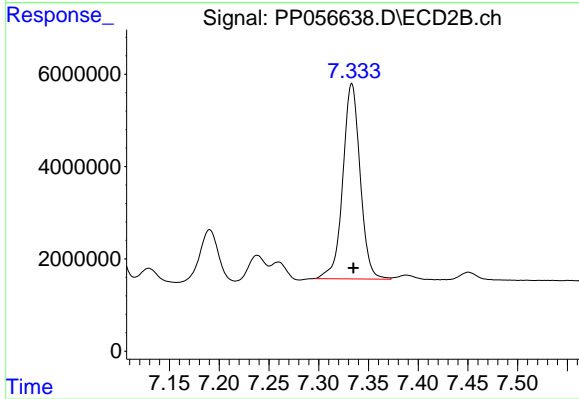
#34 AR-1260-4

R.T.: 7.092 min
 Delta R.T.: -0.002 min
 Response: 26363925
 Conc: 384.11 ng/ml



#35 AR-1260-5

R.T.: 8.401 min
 Delta R.T.: 0.001 min
 Response: 43294471
 Conc: 397.83 ng/ml



#35 AR-1260-5

R.T.: 7.333 min
 Delta R.T.: -0.002 min
 Response: 51288843
 Conc: 389.49 ng/ml